

Daily Clearing Analysis: Age

B7 Nursing analysis at 00:05 on Tuesday 21 August 2018 (5 days after A level results day)

CB.1 Placed applicants to nursing by country of domicile and age group, 2018 cycle (5 days after A level results day)

Domicile of applicant	Age group				
	17 and under	18	19	20 to 24	25 and over
England	10	4,250	2,030	3,910	6,710
Northern Ireland	0	320	170	240	220
Scotland	10	550	300	740	1,380
Wales	0	330	170	380	610
UK	20	5,440	2,670	5,270	8,920

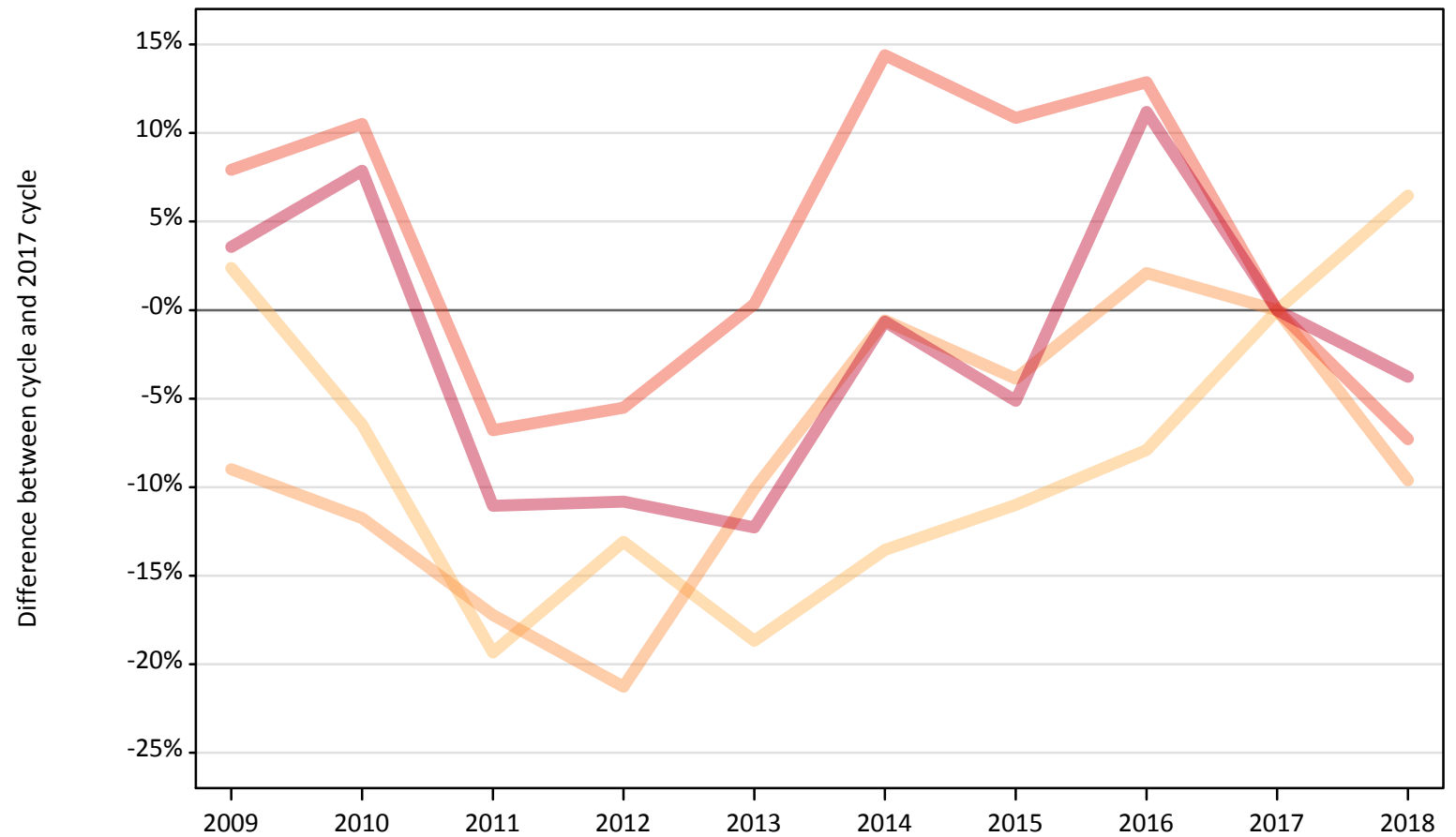
CB.2 Proportion of 18 year old population placed to nursing by country of domicile, 2018 cycle (5 days after A level results day)

Domicile of applicant	Age group	2018
England	18	0.7%
Northern Ireland	18	1.4%
Scotland	18	1.0%
Wales	18	0.9%

CB.3 Placed applicants to nursing from England by age group at 5 days after A level results day

Selected age groups: difference between cycle and 2017 cycle

- 17 and under
- 18
- 19
- 20 to 24
- 25 and over



Note: The percentage change is not plotted in the above chart for groups with fewer than 30 placed applicants in any one cycle.

CB.4 Placed applicants to nursing from England by age group at 5 days after A level results day

All age groups

Domicile of applicant	Age group	2009	2010	2011	2012	2013	2014	2015	2016	2017	2018
England	17 and under	150	70	20	0	0	10	0	0	10	10
	18	4,080	3,730	3,220	3,470	3,240	3,450	3,550	3,670	3,990	4,250
	19	2,050	1,980	1,860	1,770	2,020	2,230	2,160	2,290	2,250	2,030
	20 to 24	4,550	4,660	3,930	3,980	4,230	4,820	4,670	4,750	4,210	3,910
	25 and over	7,220	7,520	6,200	6,220	6,120	6,930	6,620	7,750	6,970	6,710

CB.5 Placed applicants to nursing from England by age group at 5 days after A level results day

Selected age groups: difference between cycle and 2017 cycle

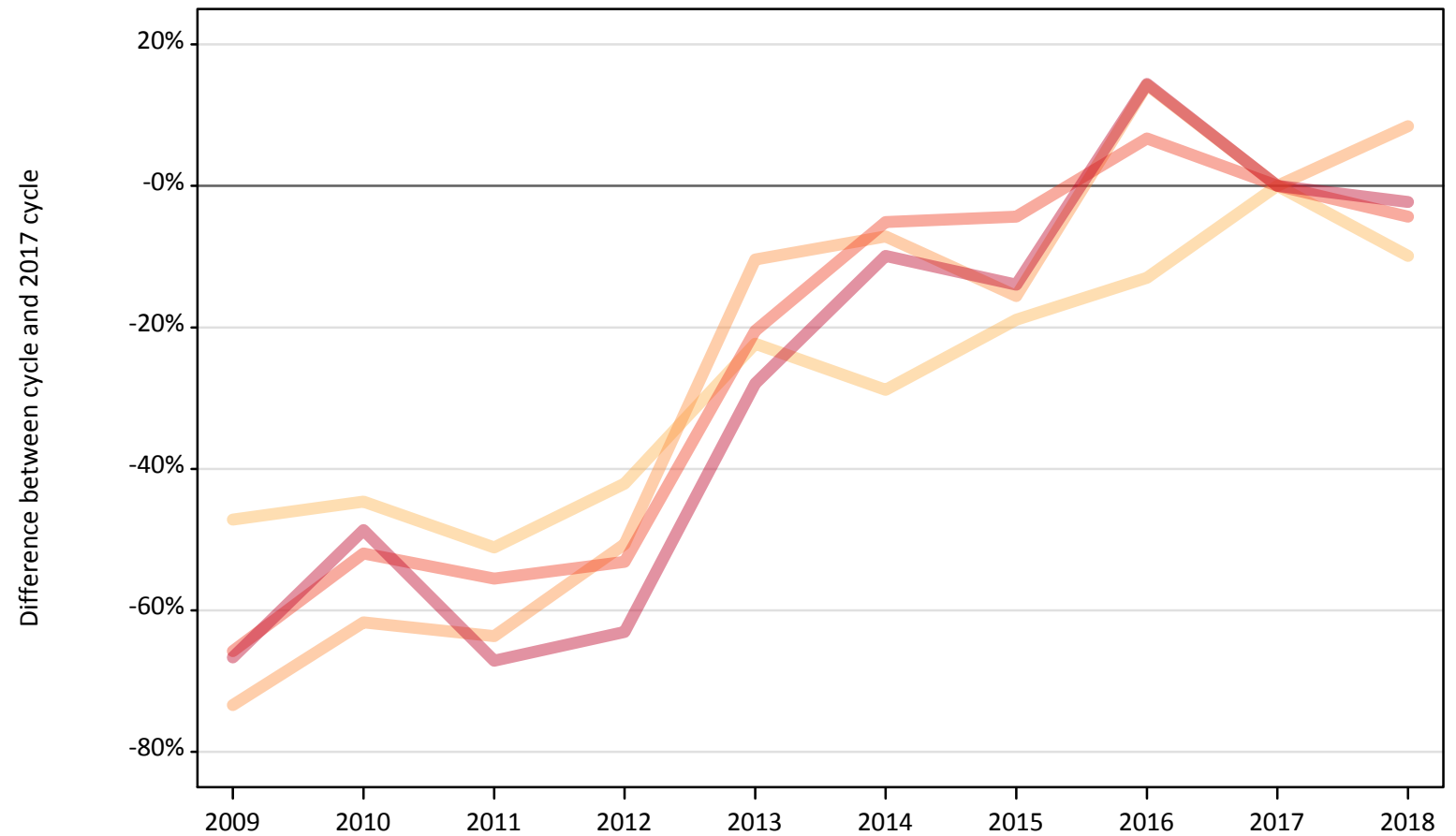
Domicile of applicant	Age group	2009	2010	2011	2012	2013	2014	2015	2016	2017	2018
England	17 and under	2350%	1133%	300%			-17%			0%	-17%
	18	2%	-6%	-19%	-13%	-19%	-14%	-11%	-8%	0%	6%
	19	-9%	-12%	-17%	-21%	-10%	-1%	-4%	2%	0%	-10%
	20 to 24	8%	11%	-7%	-6%	0%	14%	11%	13%	0%	-7%
	25 and over	4%	8%	-11%	-11%	-12%	-1%	-5%	11%	0%	-4%

Note: The percentage change is not recorded in the above table for groups with fewer than 10 placed applicants in that cycle or in the 2017 cycle.

CB.6 Placed applicants to nursing from Northern Ireland by age group at 5 days after A level results day

Selected age groups: difference between cycle and 2017 cycle

- 17 and under
- 18
- 19
- 20 to 24
- 25 and over



Note: The percentage change is not plotted in the above chart for groups with fewer than 30 placed applicants in any one cycle.

CB.7 Placed applicants to nursing from Northern Ireland by age group at 5 days after A level results day

All age groups

Domicile of applicant	Age group	2009	2010	2011	2012	2013	2014	2015	2016	2017	2018
Northern Ireland	17 and under	0	0	0	0	0	0	0	0	0	0
	18	190	200	170	210	280	250	290	310	350	320
	19	40	60	60	80	140	140	130	180	150	170
	20 to 24	90	120	110	120	200	240	240	270	250	240
	25 and over	70	110	70	80	160	200	190	250	220	220

CB.8 Placed applicants to nursing from Northern Ireland by age group at 5 days after A level results day

Selected age groups: difference between cycle and 2017 cycle

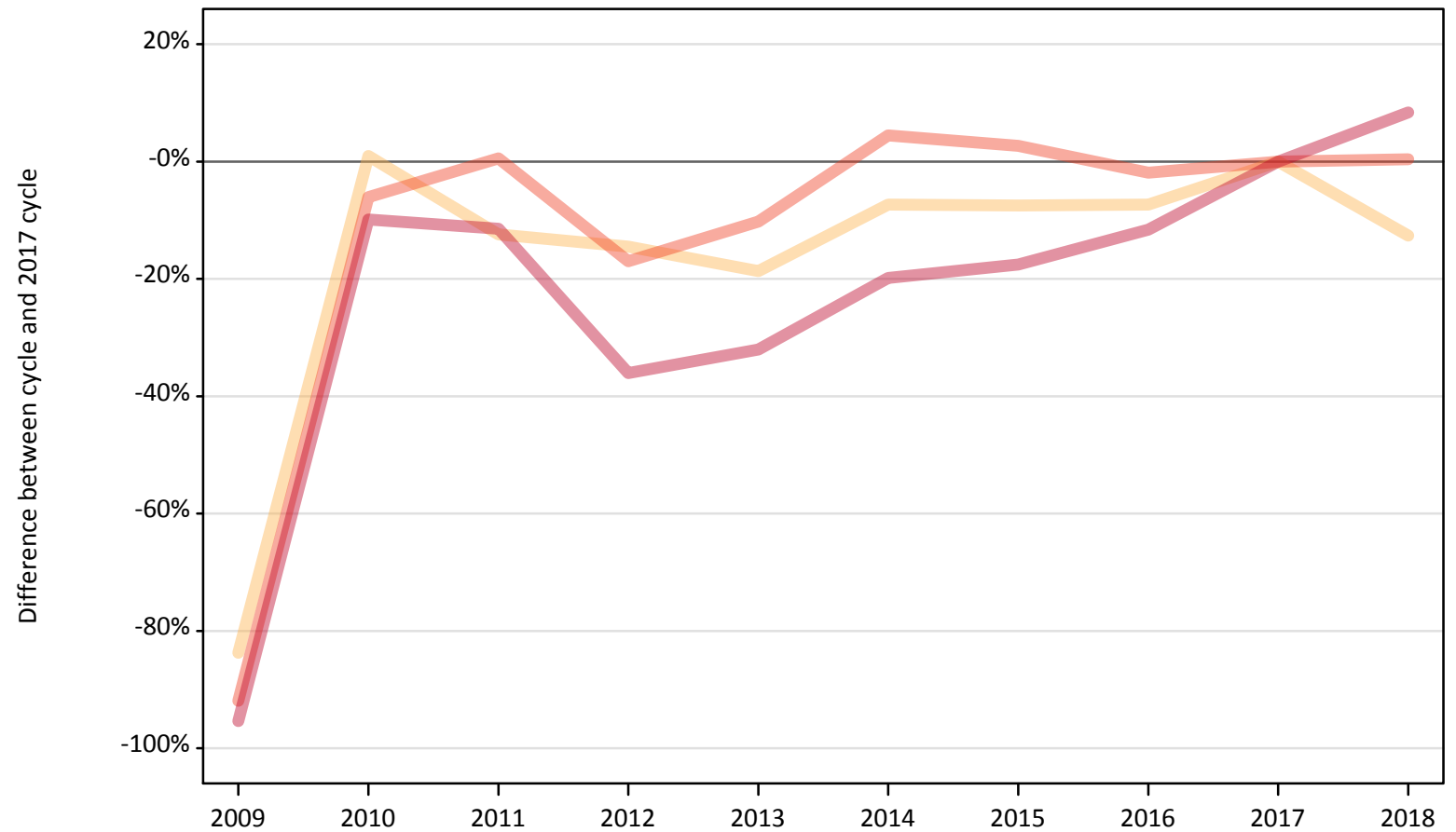
Domicile of applicant	Age group	2009	2010	2011	2012	2013	2014	2015	2016	2017	2018
Northern Ireland	17 and under										
	18	-47%	-45%	-51%	-42%	-22%	-29%	-19%	-13%	0%	-10%
	19	-73%	-62%	-64%	-51%	-10%	-7%	-16%	14%	0%	8%
	20 to 24	-66%	-52%	-56%	-53%	-20%	-5%	-4%	7%	0%	-4%
	25 and over	-67%	-49%	-67%	-63%	-28%	-10%	-14%	14%	0%	-2%

Note: The percentage change is not recorded in the above table for groups with fewer than 10 placed applicants in that cycle or in the 2017 cycle.

CB.9 Placed applicants to nursing from Scotland by age group at 5 days after A level results day

Selected age groups: difference between cycle and 2017 cycle

- 17 and under
- 18
- 19
- 20 to 24
- 25 and over



Note: The percentage change is not plotted in the above chart for groups with fewer than 30 placed applicants in any one cycle.

CB.10 Placed applicants to nursing from Scotland by age group at 5 days after A level results day

All age groups

Domicile of applicant	Age group	2009	2010	2011	2012	2013	2014	2015	2016	2017	2018
Scotland	17 and under	0	40	20	20	20	20	10	20	20	10
	18	100	630	550	540	510	580	580	580	630	550
	19	30	300	290	270	290	310	300	320	290	300
	20 to 24	60	700	750	620	670	770	760	730	740	740
	25 and over	60	1,150	1,130	820	870	1,020	1,050	1,130	1,280	1,380

CB.11 Placed applicants to nursing from Scotland by age group at 5 days after A level results day

Selected age groups: difference between cycle and 2017 cycle

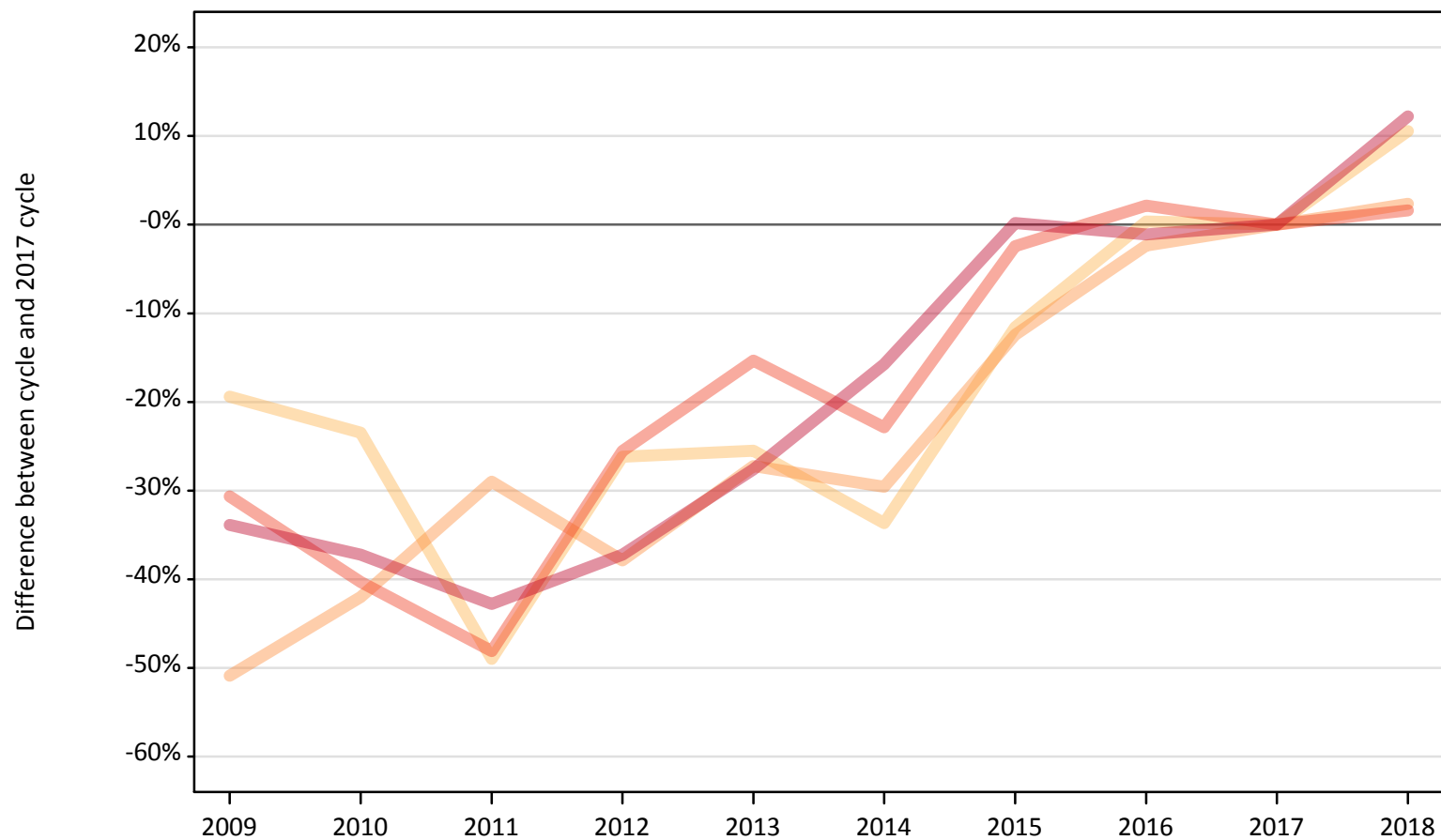
Domicile of applicant	Age group	2009	2010	2011	2012	2013	2014	2015	2016	2017	2018
Scotland	17 and under		105%	15%	5%	-5%	-15%	-40%	-25%	0%	-30%
	18	-84%	1%	-12%	-15%	-19%	-7%	-7%	-7%	0%	-13%
	19	-91%	5%	-1%	-6%	0%	8%	3%	11%	0%	2%
	20 to 24	-92%	-6%	1%	-17%	-10%	4%	3%	-2%	0%	0%
	25 and over	-95%	-10%	-11%	-36%	-32%	-20%	-18%	-12%	0%	8%

Note: The percentage change is not recorded in the above table for groups with fewer than 10 placed applicants in that cycle or in the 2017 cycle.

CB.12 Placed applicants to nursing from Wales by age group at 5 days after A level results day

Selected age groups: difference between cycle and 2017 cycle

- 17 and under
- 18
- 19
- 20 to 24
- 25 and over



Note: The percentage change is not plotted in the above chart for groups with fewer than 30 placed applicants in any one cycle.

CB.13 Placed applicants to nursing from Wales by age group at 5 days after A level results day

All age groups

Domicile of applicant	Age group	2009	2010	2011	2012	2013	2014	2015	2016	2017	2018
Wales	17 and under	0	0	0	0	0	0	0	0	0	0
	18	240	230	150	220	220	200	260	300	290	330
	19	80	100	120	110	120	120	150	170	170	170
	20 to 24	260	220	190	280	320	290	360	380	370	380
	25 and over	360	340	310	340	390	460	540	530	540	610

CB.14 Placed applicants to nursing from Wales by age group at 5 days after A level results day

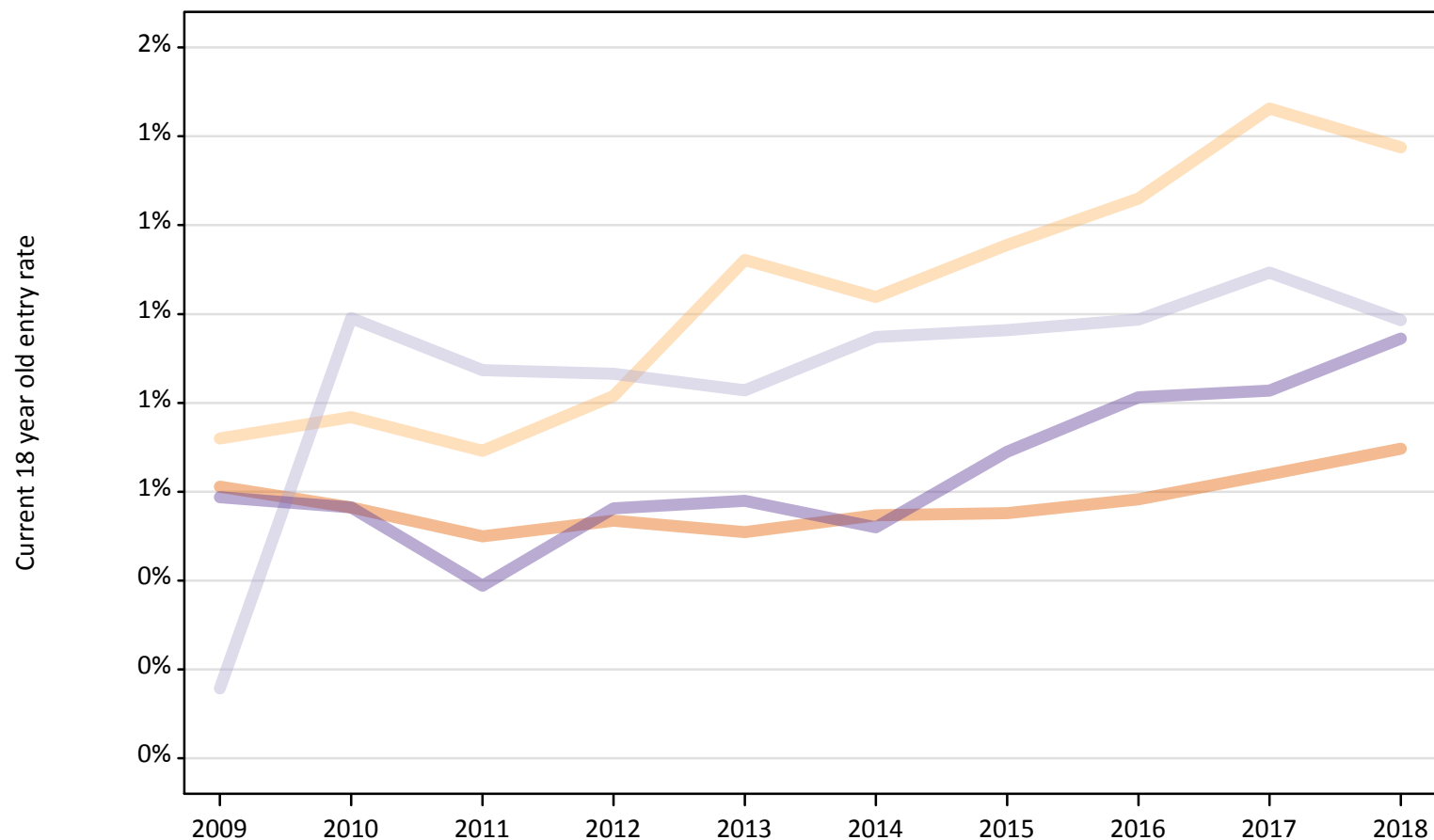
Selected age groups: difference between cycle and 2017 cycle

Domicile of applicant	Age group	2009	2010	2011	2012	2013	2014	2015	2016	2017	2018
Wales	17 and under										
	18	-19%	-23%	-49%	-26%	-26%	-34%	-12%	0%	0%	11%
	19	-51%	-42%	-29%	-38%	-27%	-30%	-12%	-2%	0%	2%
	20 to 24	-31%	-40%	-48%	-26%	-15%	-23%	-2%	2%	0%	2%
	25 and over	-34%	-37%	-43%	-37%	-28%	-16%	0%	-1%	0%	12%

Note: The percentage change is not recorded in the above table for groups with fewer than 10 placed applicants in that cycle or in the 2017 cycle.

CB.15 Entry rates to nursing for 18 year olds by UK country of domicile: 5 days after A level results day

Placed 18 year old applicants as a proportion of the 18 year old population



CB.16 Entry rates to nursing for 18 year olds by UK country of domicile: 5 days after A level results day

Placed 18 year old applicants as a proportion of the 18 year old population

Domicile of applicant	Age group	2009	2010	2011	2012	2013	2014	2015	2016	2017	2018
England	18	0.6%	0.6%	0.5%	0.5%	0.5%	0.5%	0.6%	0.6%	0.6%	0.7%
Northern Ireland	18	0.7%	0.8%	0.7%	0.8%	1.1%	1.0%	1.2%	1.3%	1.5%	1.4%
Scotland	18	0.2%	1.0%	0.9%	0.9%	0.8%	0.9%	1.0%	1.0%	1.1%	1.0%
Wales	18	0.6%	0.6%	0.4%	0.6%	0.6%	0.5%	0.7%	0.8%	0.8%	0.9%