

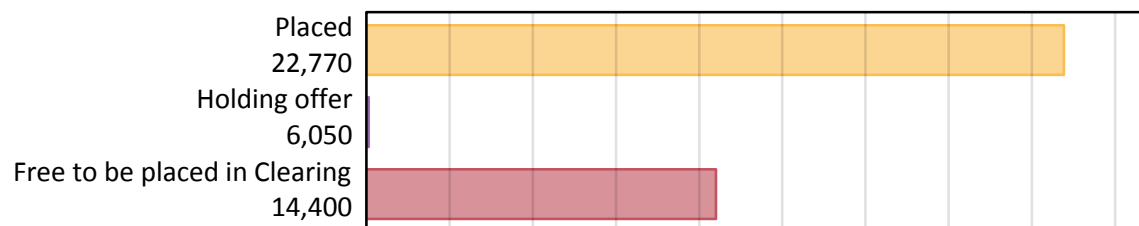
# Daily Clearing Analysis: Overview

## B7 Nursing analysis at 00:05 on Tuesday 21 August 2018 (5 days after A level results day)

### AB.1 Placed applicants to nursing from all domiciles, 2018 cycle

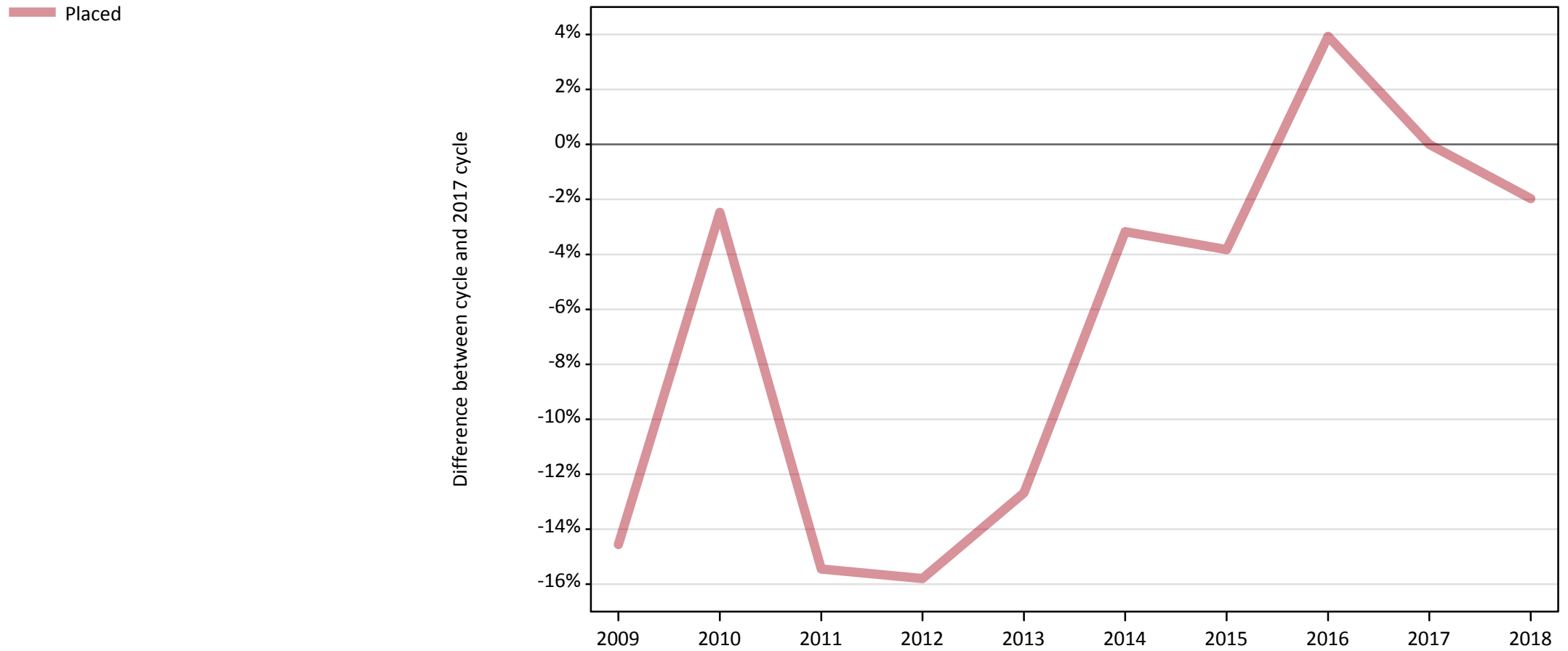
Applicant type	Status	2018
Main scheme	Placed (Clearing)	760
	Placed (Adjustment)	10
	Placed (Firm)	20,390
	Placed (Insurance)	450
	Placed (Other)	940
	Holding offer	6,050
	Free to be placed in Clearing	14,400
Direct to Clearing	Placed (Direct to Clearing)	220
	Other (Direct to Clearing)	440
All applicants	Placed	22,770

### AB.2 Summary of nursing applicants who are placed, holding offers or free to be placed in Clearing ( all domiciles )



### AB.3 Placed applicants to nursing from all domiciles: 5 days after A level results day

Placed applicants to nursing: difference between cycle and 2017 cycle



Note: The percentage change is not plotted in the above chart for groups with fewer than 30 placed applicants in any one cycle.

#### AB.4 Placed applicants to nursing from all domiciles: 5 days after A level results day

Placed applicants to nursing: applicants at 5 days after A level results day

Applicant type	Status	2009	2010	2011	2012	2013	2014	2015	2016	2017	2018
All applicants	Placed	19,850	22,660	19,640	19,560	20,290	22,490	22,340	24,150	23,230	22,770

#### AB.5 Placed applicants to nursing from all domiciles: 5 days after A level results day

Placed applicants to nursing: difference between cycle and 2017 cycle

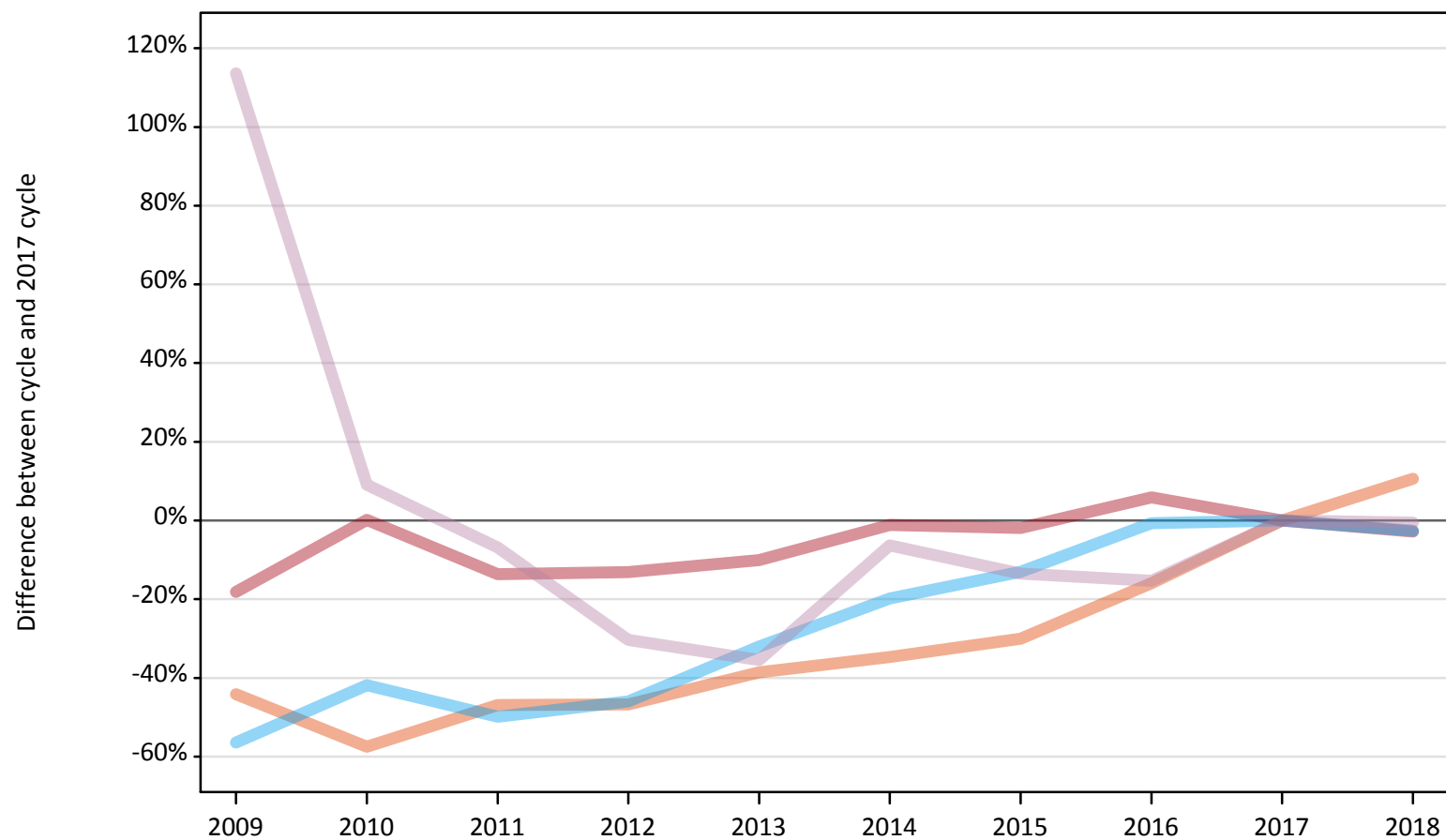
Applicant type	Status	2009	2010	2011	2012	2013	2014	2015	2016	2017	2018
All applicants	Placed	-15%	-2%	-15%	-16%	-13%	-3%	-4%	4%	0%	-2%

Note: The percentage change is not recorded in the above table for groups with fewer than 10 placed applicants in that cycle or in the 2017 cycle.

## AB.6 Placed main scheme applicants to nursing from all domiciles: 5 days after A level results day

All Main scheme placed routes (excluding Adjustment): difference between cycle and 2017 cycle

- Placed (Clearing)
- Placed (Firm)
- Placed (Insurance)
- Placed (Other)



Note: The percentage change is not plotted in the above chart for groups with fewer than 30 placed applicants in any one cycle.

**AB.7 Placed main scheme applicants to nursing from all domiciles: 5 days after A level results day**

All Main scheme placed routes (excluding Adjustment): applicants at 5 days after A level results day

Applicant type	Status	2009	2010	2011	2012	2013	2014	2015	2016	2017	2018
Main scheme	Placed (Clearing)	390	290	370	370	420	450	480	580	690	760
	Placed (Firm)	17,170	21,010	18,110	18,230	18,870	20,750	20,580	22,220	20,980	20,390
	Placed (Insurance)	200	270	230	250	310	370	400	460	460	450
	Placed (Other)	2,030	1,030	880	660	610	890	820	800	950	940

**AB.8 Placed main scheme applicants to nursing from all domiciles: 5 days after A level results day**

All Main scheme placed routes (excluding Adjustment): difference between cycle and 2017 cycle

Applicant type	Status	2009	2010	2011	2012	2013	2014	2015	2016	2017	2018
Main scheme	Placed (Clearing)	-44%	-57%	-47%	-47%	-39%	-35%	-30%	-16%	0%	11%
	Placed (Firm)	-18%	0%	-14%	-13%	-10%	-1%	-2%	6%	0%	-3%
	Placed (Insurance)	-56%	-42%	-50%	-46%	-32%	-20%	-13%	-1%	0%	-3%
	Placed (Other)	114%	9%	-7%	-30%	-35%	-6%	-14%	-15%	0%	-1%

Note: The percentage change is not recorded in the above table for groups with fewer than 10 placed applicants in that cycle or in the 2017 cycle.

**AB.9 Main scheme applicants placed to nursing through adjustment: 5 days after A level results day**

Placed through adjustment: difference between cycle and 2017 cycle

**[This chart is not part of this report]**

**AB.10 Main scheme applicants placed to nursing through adjustment: 5 days after A level results day**

Placed through adjustment: applicants at 5 days after A level results day

Applicant type	Status	2009	2010	2011	2012	2013	2014	2015	2016	2017	2018
Main scheme	Placed (Adjustment)	0	0	0	0	0	10	10	0	20	10

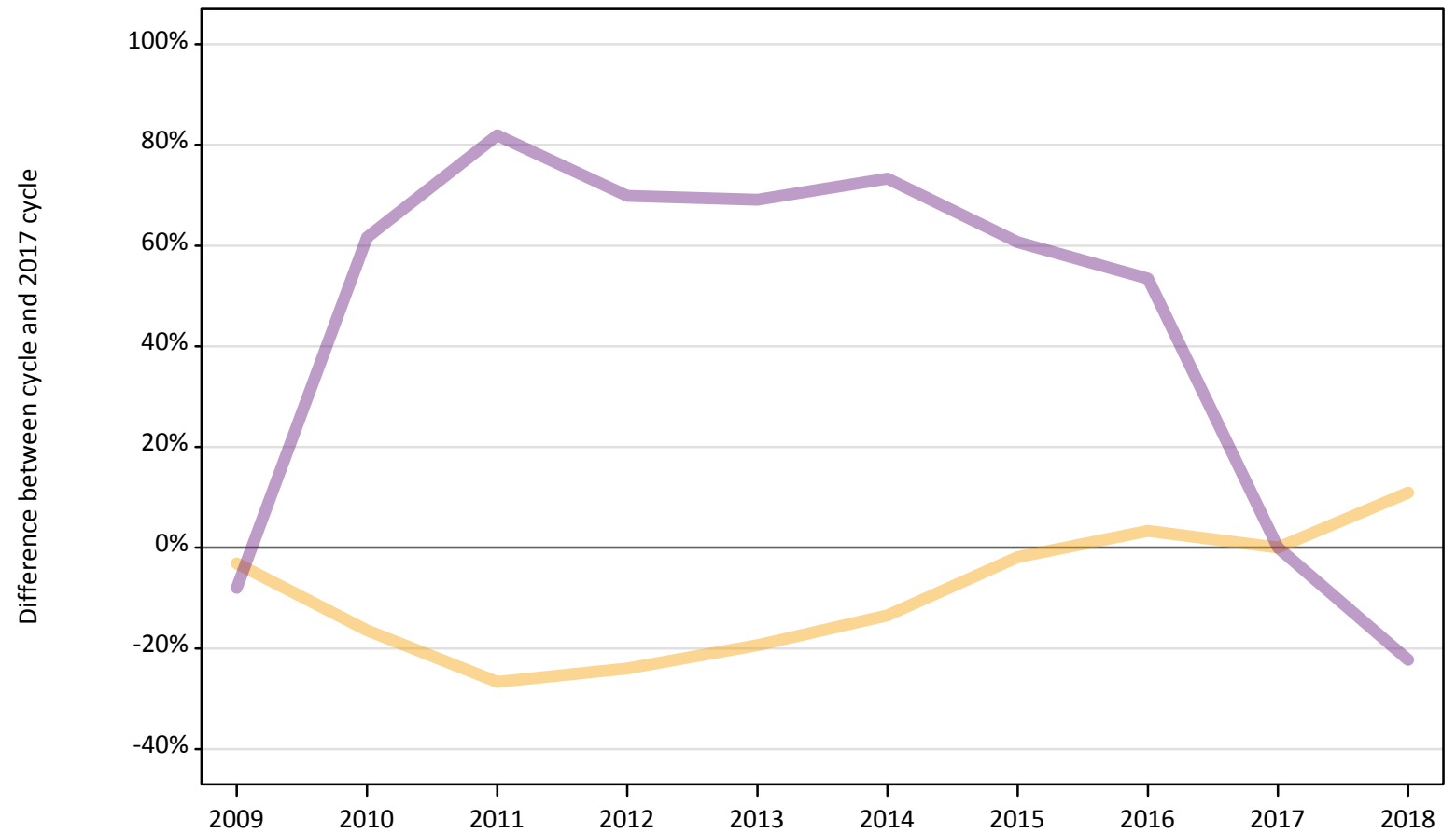
**AB.11 Main scheme applicants placed to nursing through adjustment: 5 days after A level results day**

Placed through adjustment: difference between cycle and 2017 cycle

**[This table is not part of this report]**

**AB.12 Main scheme applicants to nursing not currently placed from all domiciles: 5 days after A level results day**  
Applicants in unplaced states: difference between cycle and 2017 cycle

— Holding offer  
— Free to be placed in Clearing



Note: The percentage change is not plotted in the above chart for groups with fewer than 30 unplaced applicants in any one cycle.

**AB.13 Main scheme applicants to nursing not currently placed from all domiciles: 5 days after A level results day**

Applicants in unplaced states: applicants at 5 days after A level results day

Applicant type	Status	2009	2010	2011	2012	2013	2014	2015	2016	2017	2018
Main scheme	Holding offer	5,280	4,560	4,000	4,150	4,400	4,720	5,350	5,630	5,450	6,050
	Free to be placed in Clearing	17,050	29,960	33,710	31,480	31,330	32,120	29,780	28,440	18,530	14,400

**AB.14 Main scheme applicants to nursing not currently placed from all domiciles: 5 days after A level results day**

Applicants in unplaced states: difference between cycle and 2017 cycle

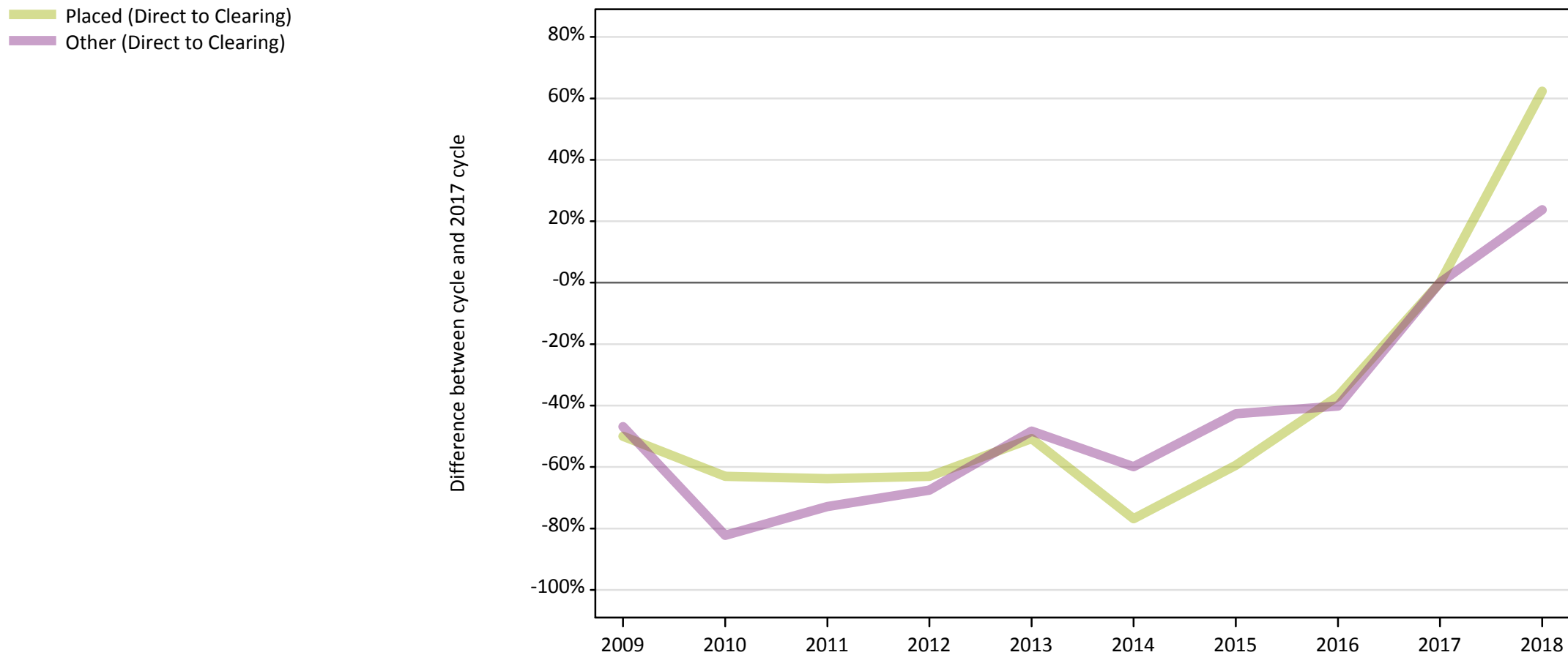
Applicant type	Status	2009	2010	2011	2012	2013	2014	2015	2016	2017	2018
Main scheme	Holding offer	-3%	-16%	-27%	-24%	-19%	-13%	-2%	3%	0%	11%
	Free to be placed in Clearing	-8%	62%	82%	70%	69%	73%	61%	53%	0%	-22%

Note: The percentage change is not recorded in the above table for groups with fewer than 10 unplaced applicants in that cycle or in the 2017 cycle.



### AB.15 Direct to Clearing applicants from all domiciles: 5 days after A level results day

Direct to Clearing: difference between cycle and 2017 cycle



Note: The percentage change is not plotted in the above chart for groups with fewer than 30 placed applicants in any one cycle.

**AB.16 Direct to Clearing applicants from all domiciles: 5 days after A level results day**

Direct to Clearing 5 days after A level results day

Applicant type	Status	2009	2010	2011	2012	2013	2014	2015	2016	2017	2018
Direct to Clearing	Placed (Direct to Clearing)	70	50	50	50	70	30	60	90	140	220
	Other (Direct to Clearing)	190	60	100	120	180	140	200	210	350	440

**AB.17 Direct to Clearing applicants from all domiciles: 5 days after A level results day**

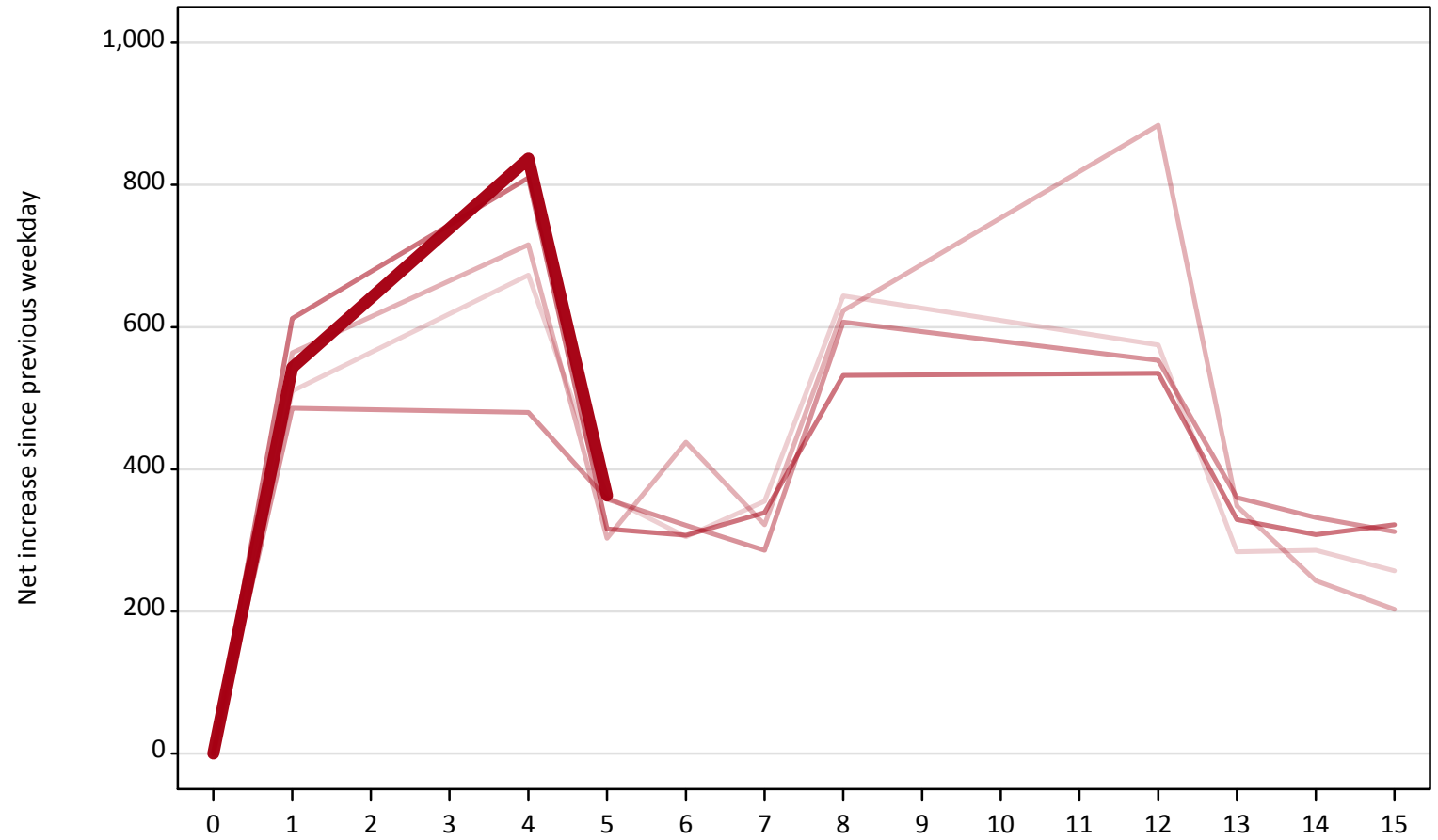
Direct to Clearing: difference between cycle and 2017 cycle

Applicant type	Status	2009	2010	2011	2012	2013	2014	2015	2016	2017	2018
Direct to Clearing	Placed (Direct to Clearing)	-50%	-63%	-64%	-63%	-51%	-77%	-59%	-37%	0%	62%
	Other (Direct to Clearing)	-47%	-82%	-73%	-68%	-48%	-60%	-43%	-40%	0%	24%

Note: The percentage change is not recorded in the above table for groups with fewer than 10 placed applicants in that cycle or in the 2017 cycle.

**AB.18 All Placed: Daily net change (from all domiciles)**  
Net increase since previous weekday (2018 cycle up to 5 days after A level results day)

- 2014
- 2015
- 2016
- 2017
- 2018**

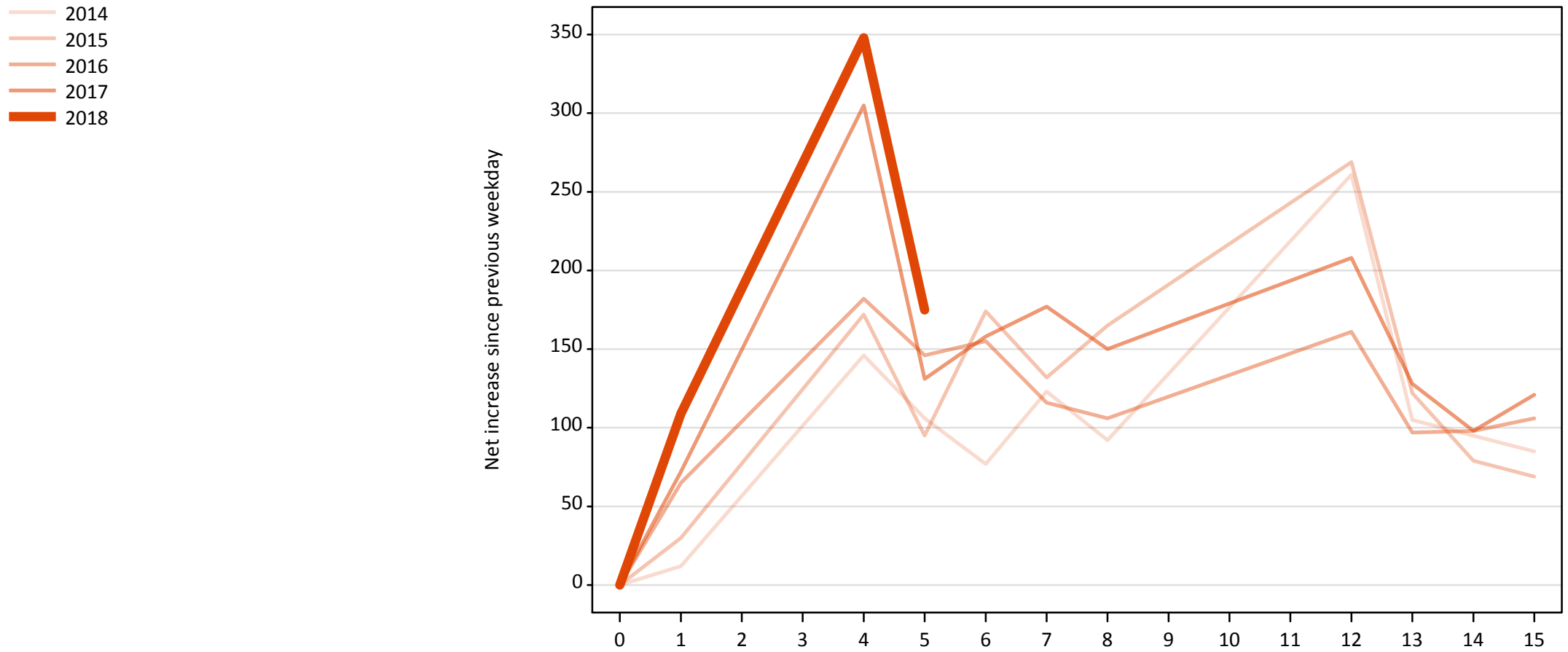


**AB.19 All Placed: Daily net change (from all domiciles)**

Net increase since previous weekday (2018 cycle up to 5 days after A level results day)

Applicant status, days since A level results day		2014	2015	2016	2017	2018
All Placed	0	0	0	0	0	0
	1	510	560	490	610	540
	4	670	720	480	810	840
	5	360	300	360	320	360
	6	310	440	320	310	
	7	360	320	290	340	
	8	640	620	610	530	
	12	580	880	550	540	
	13	280	350	360	330	
	14	290	240	330	310	
	15	260	200	310	320	

**AB.20 Placed through Clearing only: Daily net change (from all domiciles)**  
Net increase since previous weekday (2018 cycle up to 5 days after A level results day)



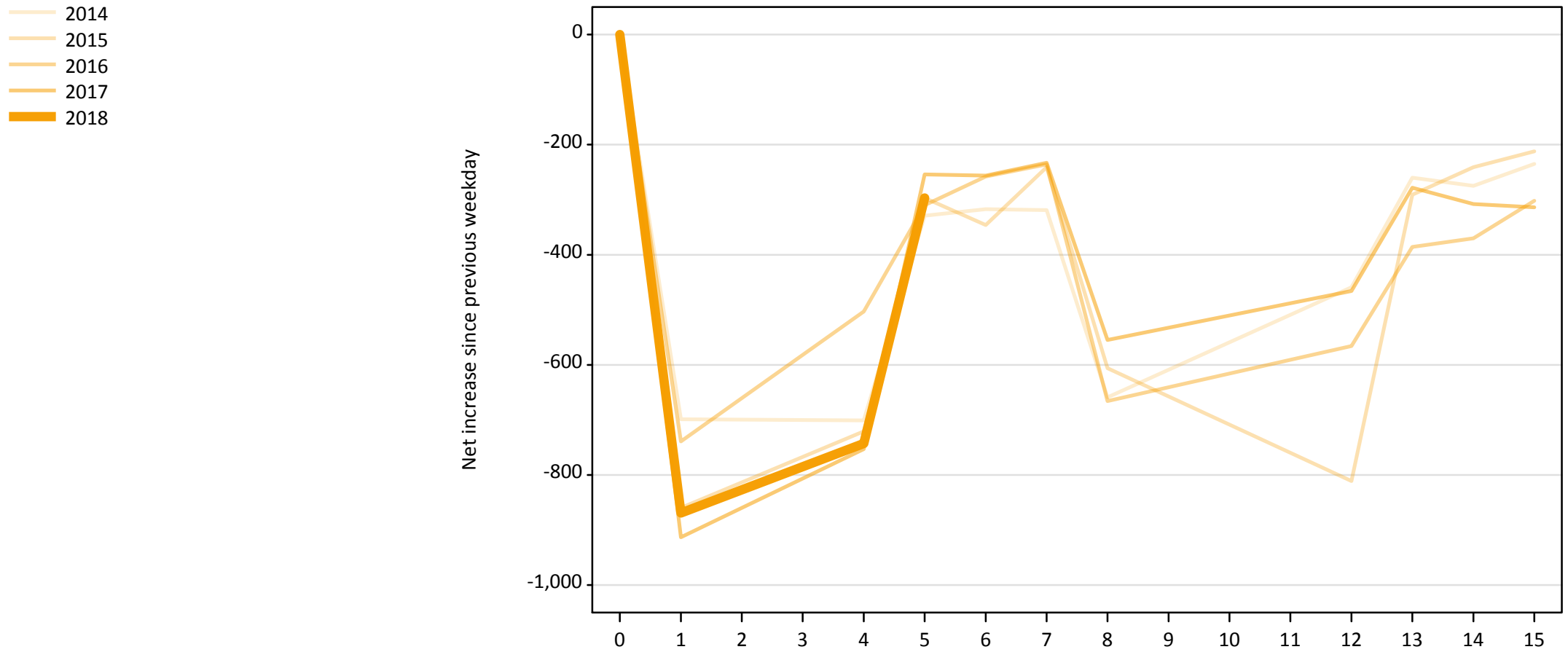
**AB.21 Placed through Clearing only: Daily net change (from all domiciles)**

Net increase since previous weekday (2018 cycle up to 5 days after A level results day)

Applicant status, days since A level results day		2014	2015	2016	2017	2018
Placed through Clearing only	0	0	0	0	0	0
	1	10	30	70	70	110
	4	150	170	180	310	350
	5	110	100	150	130	180
	6	80	170	160	160	
	7	120	130	120	180	
	8	90	170	110	150	
	12	260	270	160	210	
	13	110	120	100	130	
	14	100	80	100	100	
	15	90	70	110	120	

## AB.22 Holding Offer: Daily net change (from all domiciles)

Net increase since previous weekday (2018 cycle up to 5 days after A level results day)



**AB.23 Holding Offer: Daily net change (from all domiciles)**

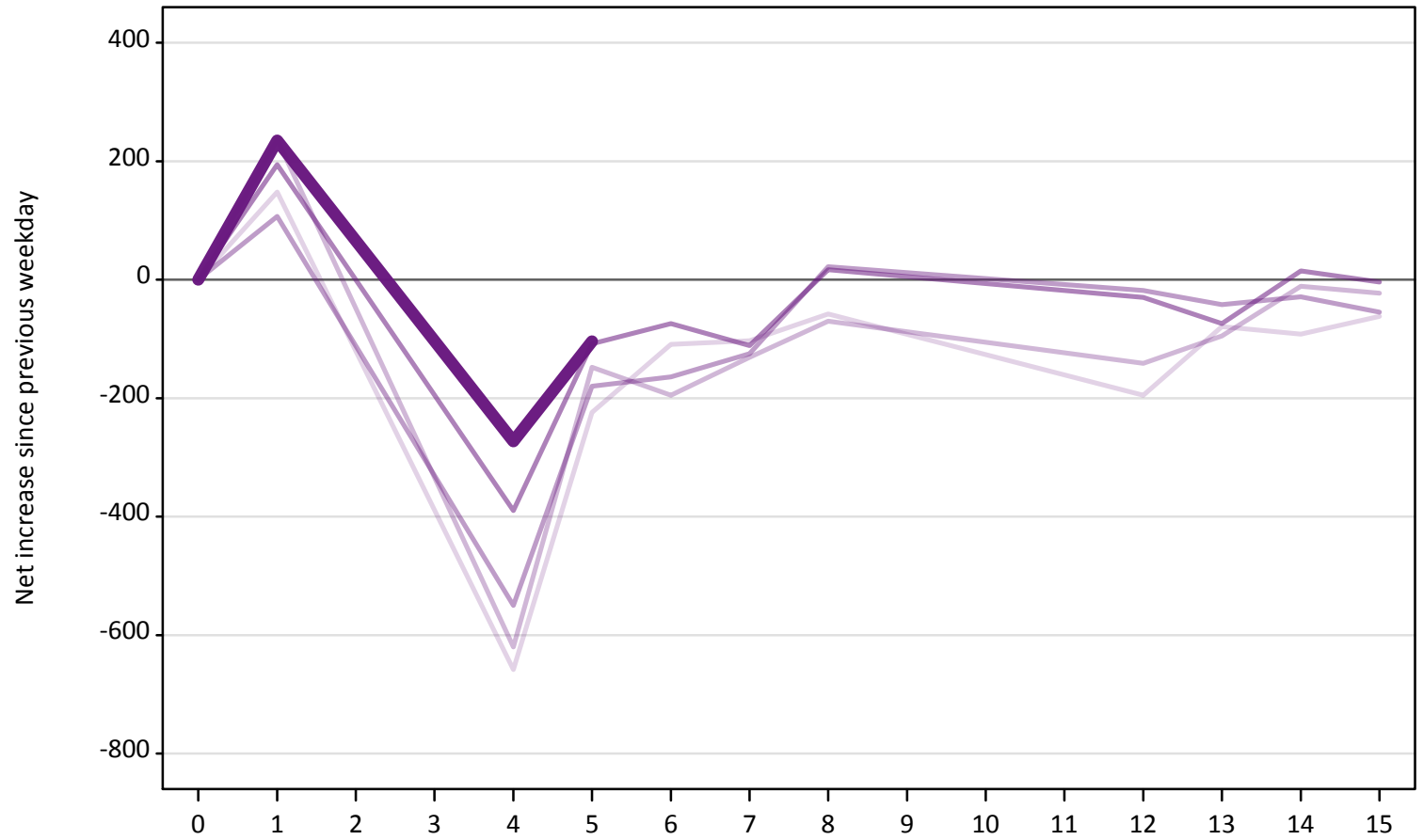
Net increase since previous weekday (2018 cycle up to 5 days after A level results day)

Applicant status, days since A level results day	2014	2015	2016	2017	2018	
Holding Offer	0	0	0	0	0	
	1	-700	-860	-740	-910	-870
	4	-700	-720	-500	-750	-740
	5	-330	-300	-310	-250	-300
	6	-320	-350	-260	-260	
	7	-320	-240	-240	-230	
	8	-660	-610	-670	-560	
	12	-460	-810	-570	-470	
	13	-260	-290	-390	-280	
	14	-280	-240	-370	-310	
	15	-240	-210	-300	-310	



**AB.24 Free to be placed in Clearing: Daily net change (from all domiciles)**  
Net increase since previous weekday (2018 cycle up to 5 days after A level results day)

- 2014
- 2015
- 2016
- 2017
- 2018



**AB.25 Free to be placed in Clearing: Daily net change (from all domiciles)**  
 Net increase since previous weekday (2018 cycle up to 5 days after A level results day)

Applicant status, days since A level results day		2014	2015	2016	2017	2018
Free to be placed in Clearing	0	0	0	0	0	0
	1	150	240	110	190	240
	4	-660	-620	-550	-390	-270
	5	-220	-150	-180	-110	-100
	6	-110	-200	-160	-70	
	7	-100	-130	-130	-110	
	8	-60	-70	20	20	
	12	-200	-140	-20	-30	
	13	-80	-100	-40	-70	
	14	-90	-10	-30	20	
	15	-60	-20	-60	0	