

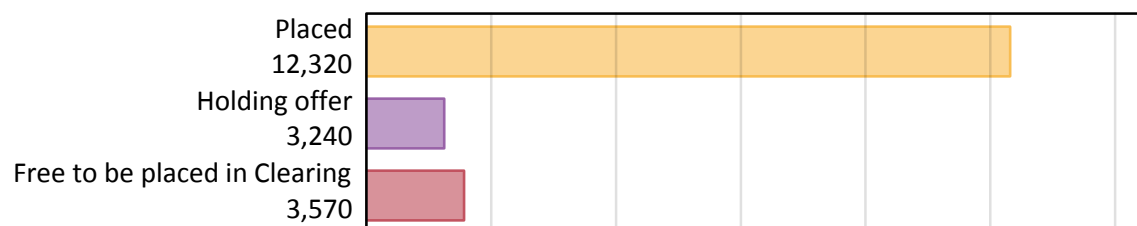
Daily Clearing Analysis: Overview

Analysis at 00:05 on Tuesday 21 August 2018 (5 days after A level results day)

A.1 Applicants by type and status from Northern Ireland, 2018 cycle

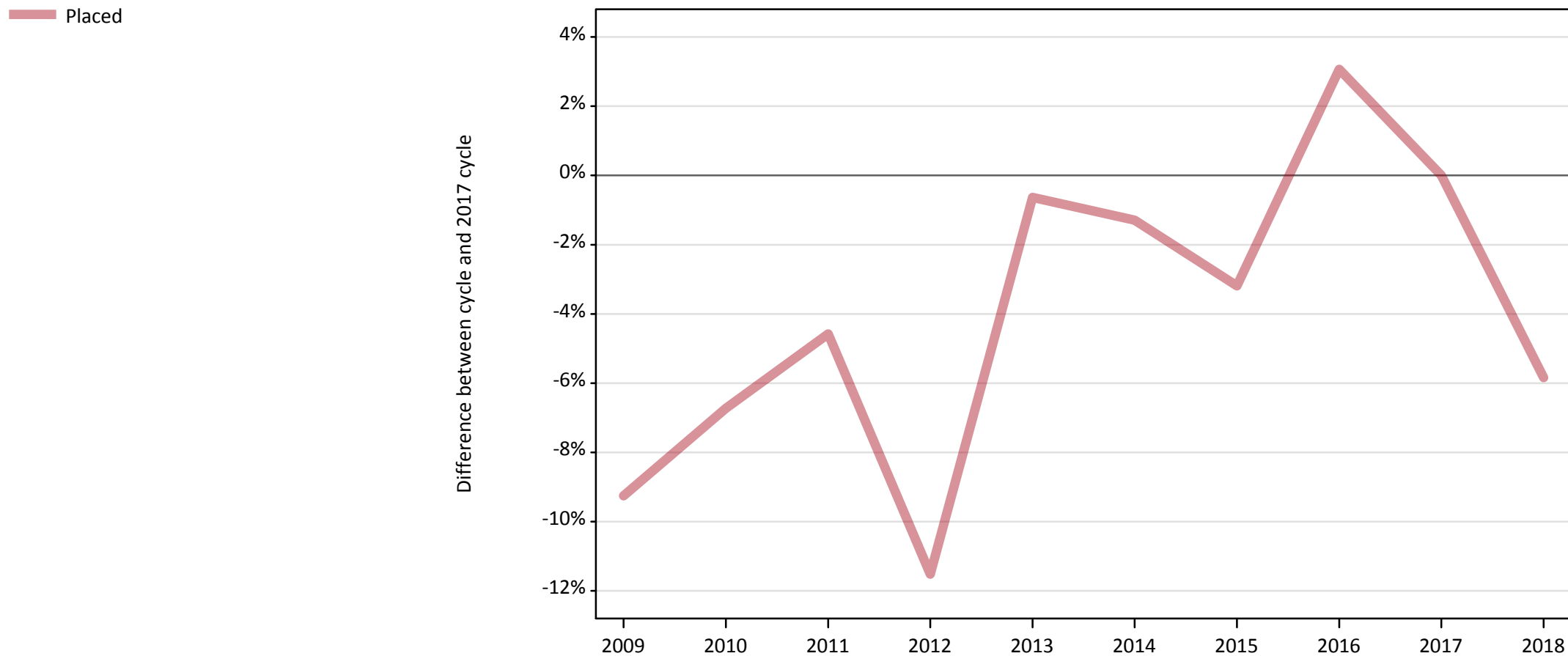
Applicant type	Status	2018
Main scheme	Placed (Clearing)	460
	Placed (Adjustment)	20
	Placed (Firm)	10,760
	Placed (Insurance)	920
	Placed (Other)	120
	Holding offer	3,240
	Free to be placed in Clearing	3,570
Direct to Clearing	Placed (Direct to Clearing)	40
	Other (Direct to Clearing)	80
All applicants	Placed	12,320

A.2 Summary of applicants who are placed, holding offers or free to be placed in Clearing (Northern Ireland)



A.3 All placed applicants from Northern Ireland: 5 days after A level results day

All placed applicants: difference between cycle and 2017 cycle



Note: The percentage change is not plotted in the above chart for groups with fewer than 30 placed applicants in any one cycle.

A.4 All placed applicants from Northern Ireland: 5 days after A level results day

All placed applicants: applicants at 5 days after A level results day

Applicant type	Status	2009	2010	2011	2012	2013	2014	2015	2016	2017	2018
All applicants	Placed	11,870	12,200	12,480	11,570	13,000	12,910	12,660	13,480	13,080	12,320

A.5 All placed applicants from Northern Ireland: 5 days after A level results day

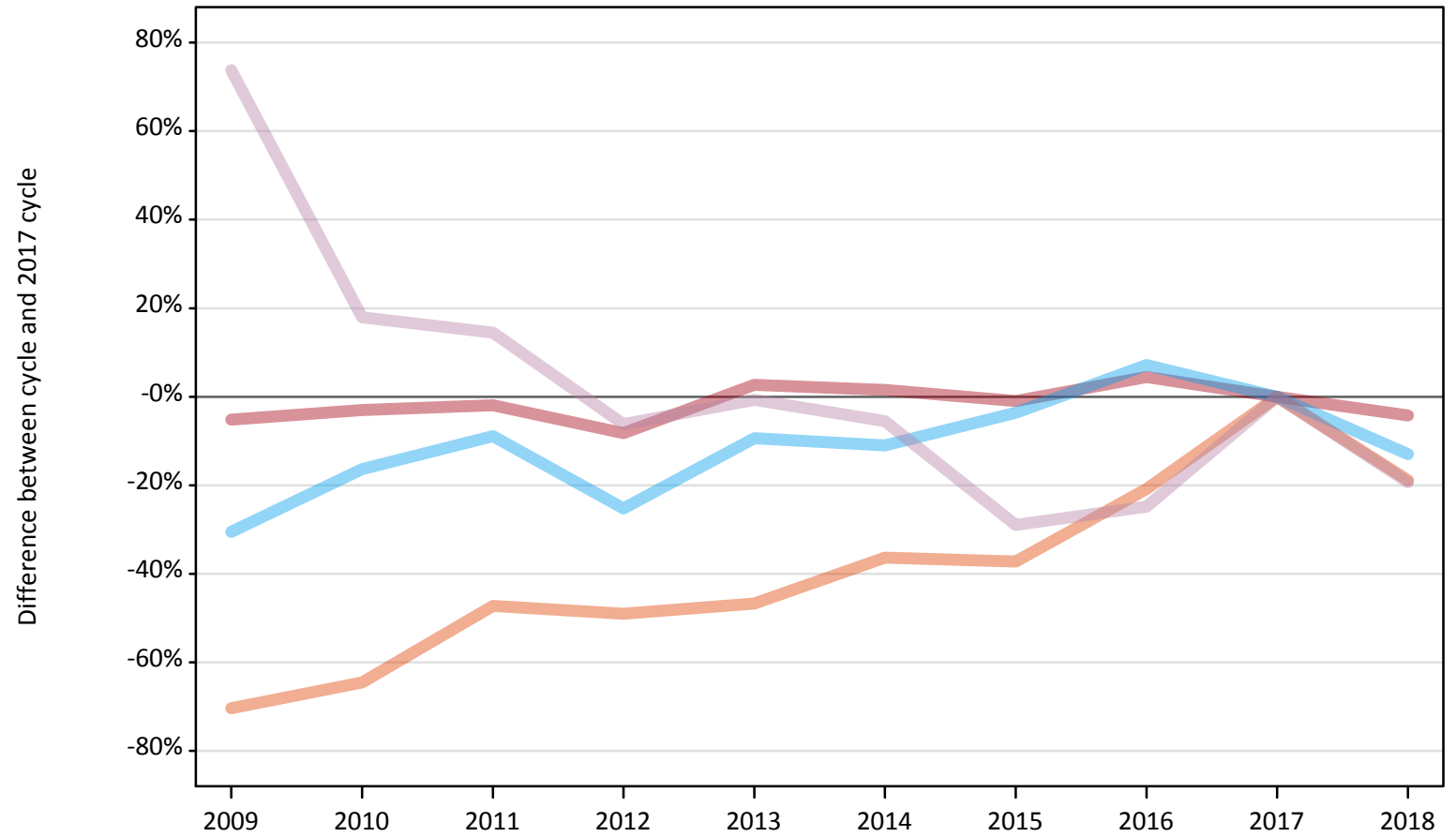
All placed applicants: difference between cycle and 2017 cycle

Applicant type	Status	2009	2010	2011	2012	2013	2014	2015	2016	2017	2018
All applicants	Placed	-9%	-7%	-5%	-12%	-1%	-1%	-3%	3%	0%	-6%

Note: The percentage change is not recorded in the above table for groups with fewer than 10 placed applicants in that cycle or in the 2017 cycle.

A.6 Placed main scheme applicants from Northern Ireland: 5 days after A level results day
All Main scheme placed routes (excluding Adjustment): difference between cycle and 2017 cycle

- Placed (Clearing)
- Placed (Firm)
- Placed (Insurance)
- Placed (Other)



Note: The percentage change is not plotted in the above chart for groups with fewer than 30 placed applicants in any one cycle.

A.7 Placed main scheme applicants from Northern Ireland: 5 days after A level results day

All Main scheme placed routes (excluding Adjustment): applicants at 5 days after A level results day

Applicant type	Status	2009	2010	2011	2012	2013	2014	2015	2016	2017	2018
Main scheme	Placed (Clearing)	170	200	300	290	300	360	360	450	570	460
	Placed (Firm)	10,650	10,900	11,020	10,310	11,540	11,400	11,120	11,730	11,230	10,760
	Placed (Insurance)	730	880	960	790	960	940	1,020	1,130	1,060	920
	Placed (Other)	250	170	170	140	140	140	100	110	150	120

A.8 Placed main scheme applicants from Northern Ireland: 5 days after A level results day

All Main scheme placed routes (excluding Adjustment): difference between cycle and 2017 cycle

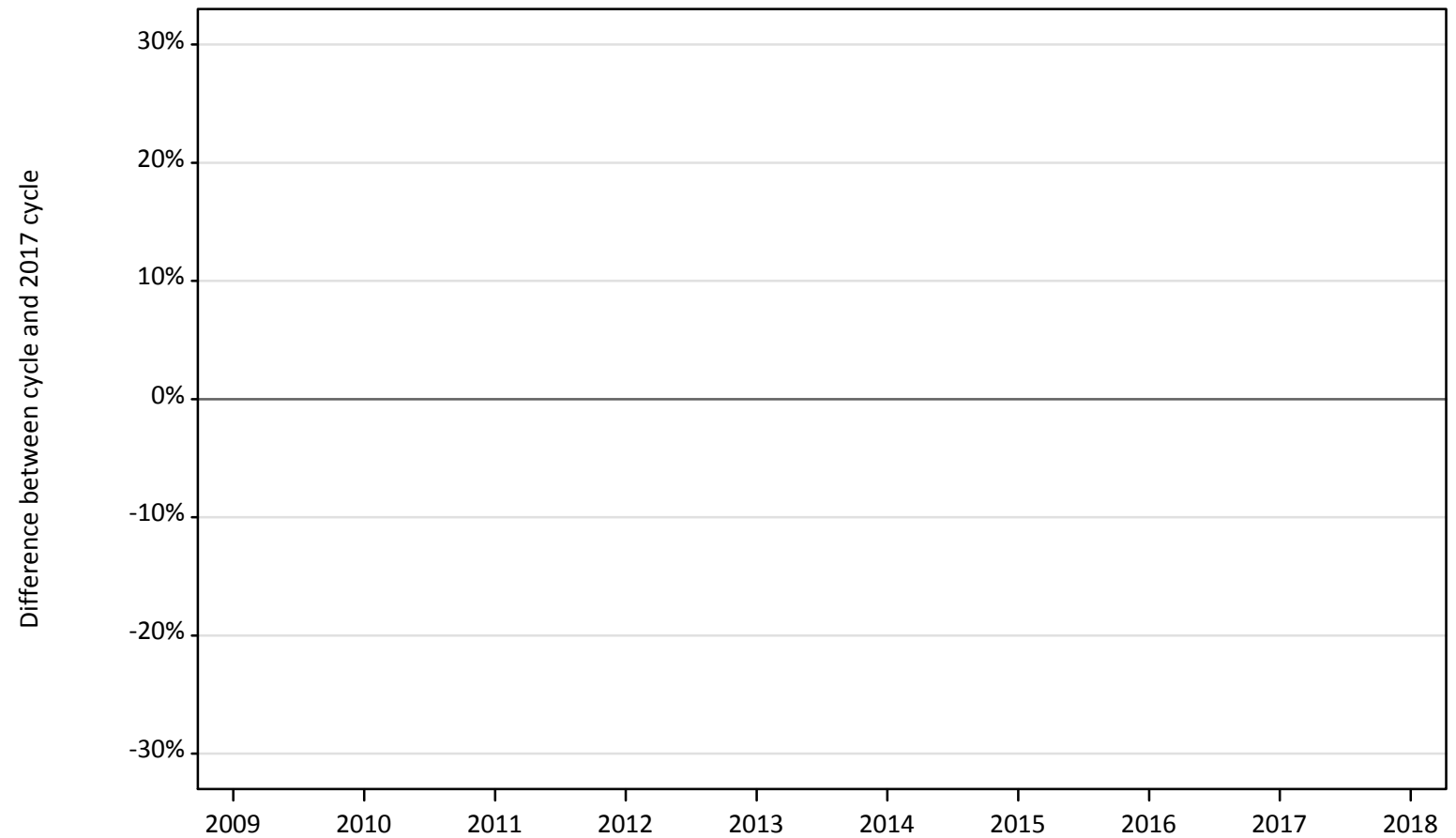
Applicant type	Status	2009	2010	2011	2012	2013	2014	2015	2016	2017	2018
Main scheme	Placed (Clearing)	-70%	-65%	-47%	-49%	-47%	-36%	-37%	-21%	0%	-19%
	Placed (Firm)	-5%	-3%	-2%	-8%	3%	2%	-1%	4%	0%	-4%
	Placed (Insurance)	-31%	-16%	-9%	-25%	-9%	-11%	-4%	7%	0%	-13%
	Placed (Other)	74%	18%	14%	-6%	-1%	-6%	-29%	-25%	0%	-19%

Note: The percentage change is not recorded in the above table for groups with fewer than 10 placed applicants in that cycle or in the 2017 cycle.

A.9 Main scheme applicants placed through adjustment: 5 days after A level results day

Placed through adjustment: difference between cycle and 2017 cycle

Placed (Adjustment)



Note: The percentage change is not plotted in the above chart for groups with fewer than 30 placed applicants in any one cycle.

A.10 Main scheme applicants placed through adjustment: 5 days after A level results day

Placed through adjustment: applicants at 5 days after A level results day

Applicant type	Status	2009	2010	2011	2012	2013	2014	2015	2016	2017	2018
Main scheme	Placed (Adjustment)	20	20	20	20	30	30	40	20	30	20

A.11 Main scheme applicants placed through adjustment: 5 days after A level results day

Placed through adjustment: difference between cycle and 2017 cycle

Applicant type	Status	2009	2010	2011	2012	2013	2014	2015	2016	2017	2018
Main scheme	Placed (Adjustment)	-44%	-35%	-53%	-35%	-6%	-18%	3%	-29%	0%	-41%

Note: The percentage change is not recorded in the above table for groups with fewer than 10 placed applicants in that cycle or in the 2017 cycle.

A.12 Main scheme applicants not currently placed from Northern Ireland: 5 days after A level results day

Applicants in unplaced states: difference between cycle and 2017 cycle

— Holding offer
— Free to be placed in Clearing



Note: The percentage change is not plotted in the above chart for groups with fewer than 30 unplaced applicants in any one cycle.

A.13 Main scheme applicants not currently placed from Northern Ireland: 5 days after A level results day

Applicants in unplaced states: applicants at 5 days after A level results day

Applicant type	Status	2009	2010	2011	2012	2013	2014	2015	2016	2017	2018
Main scheme	Holding offer	2,480	2,830	2,620	2,990	2,750	2,880	3,150	2,870	2,820	3,240
	Free to be placed in Clearing	2,950	4,200	4,760	4,360	4,350	4,360	4,860	4,580	4,270	3,570

A.14 Main scheme applicants not currently placed from Northern Ireland: 5 days after A level results day

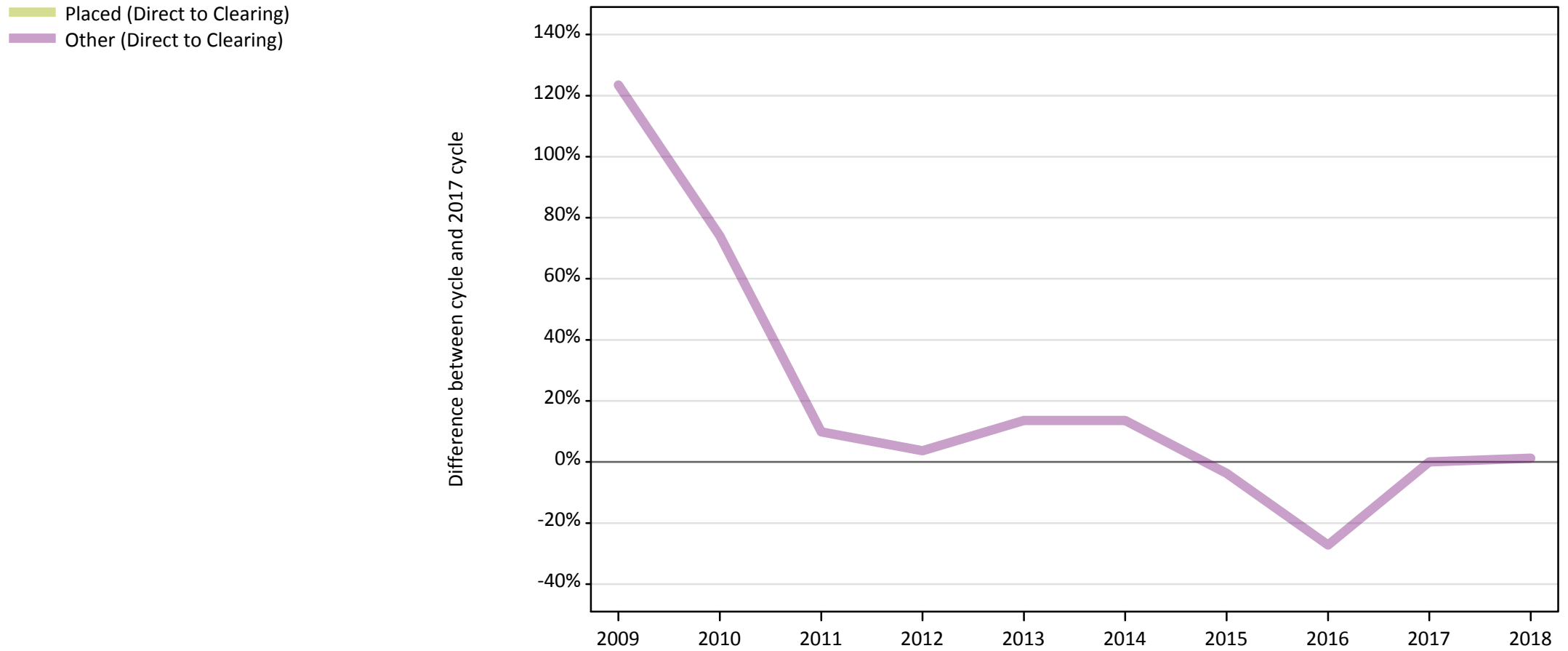
Applicants in unplaced states: difference between cycle and 2017 cycle

Applicant type	Status	2009	2010	2011	2012	2013	2014	2015	2016	2017	2018
Main scheme	Holding offer	-12%	0%	-7%	6%	-2%	2%	12%	2%	0%	15%
	Free to be placed in Clearing	-31%	-2%	11%	2%	2%	2%	14%	7%	0%	-17%

Note: The percentage change is not recorded in the above table for groups with fewer than 10 unplaced applicants in that cycle or in the 2017 cycle.

A.15 Direct to Clearing applicants from Northern Ireland: 5 days after A level results day

Direct to Clearing: difference between cycle and 2017 cycle



Note: The percentage change is not plotted in the above chart for groups with fewer than 30 placed applicants in any one cycle.

A.16 Direct to Clearing applicants from Northern Ireland: 5 days after A level results day

Direct to Clearing 5 days after A level results day

Applicant type	Status	2009	2010	2011	2012	2013	2014	2015	2016	2017	2018
Direct to Clearing	Placed (Direct to Clearing)	40	20	20	20	30	40	30	40	40	40
	Other (Direct to Clearing)	180	140	90	80	90	90	80	60	80	80

A.17 Direct to Clearing applicants from Northern Ireland: 5 days after A level results day

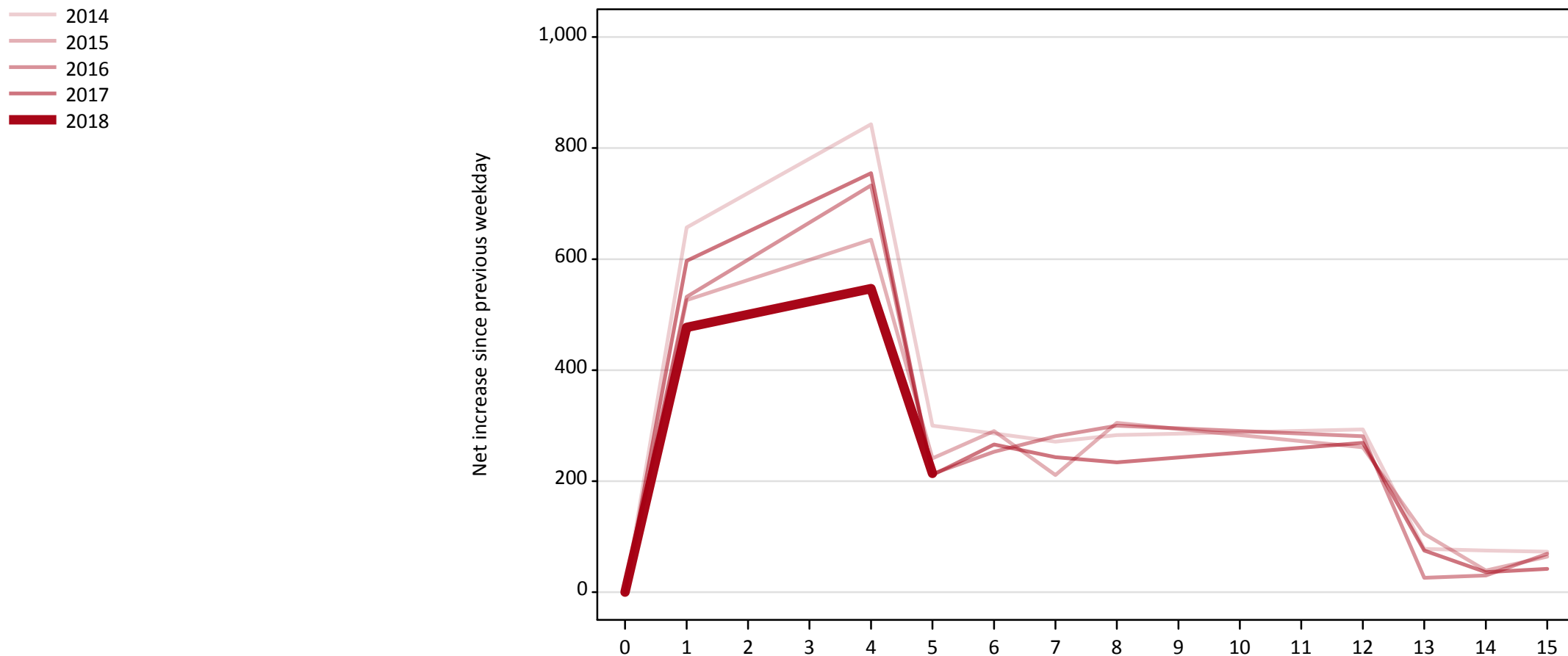
Direct to Clearing: difference between cycle and 2017 cycle

Applicant type	Status	2009	2010	2011	2012	2013	2014	2015	2016	2017	2018
Direct to Clearing	Placed (Direct to Clearing)	-5%	-45%	-52%	-45%	-43%	-9%	-34%	-16%	0%	-2%
	Other (Direct to Clearing)	123%	74%	10%	4%	14%	14%	-4%	-27%	0%	1%

Note: The percentage change is not recorded in the above table for groups with fewer than 10 placed applicants in that cycle or in the 2017 cycle.

A.18 All Placed: Daily net change (from Northern Ireland)

Net increase since previous weekday (2018 cycle up to 5 days after A level results day)

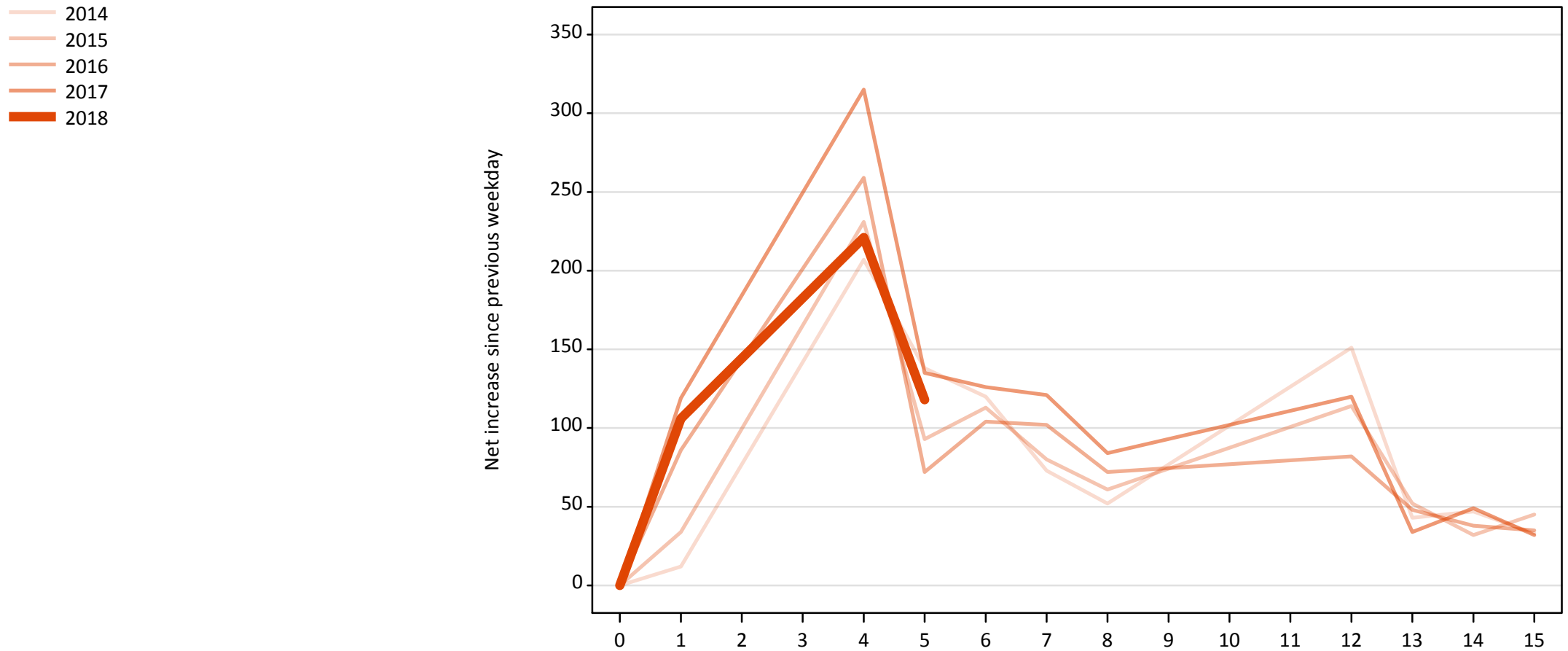


A.19 All Placed: Daily net change (from Northern Ireland)

Net increase since previous weekday (2018 cycle up to 5 days after A level results day)

Applicant status, days since A level results day		2014	2015	2016	2017	2018
All Placed	0	0	0	0	0	0
	1	660	530	530	600	480
	4	840	640	730	760	550
	5	300	240	210	210	210
	6	290	290	250	270	
	7	270	210	280	240	
	8	280	310	300	230	
	12	290	260	280	270	
	13	80	110	30	80	
	14	80	40	30	40	
	15	70	60	70	40	

A.20 Placed through Clearing only: Daily net change (from Northern Ireland)
Net increase since previous weekday (2018 cycle up to 5 days after A level results day)

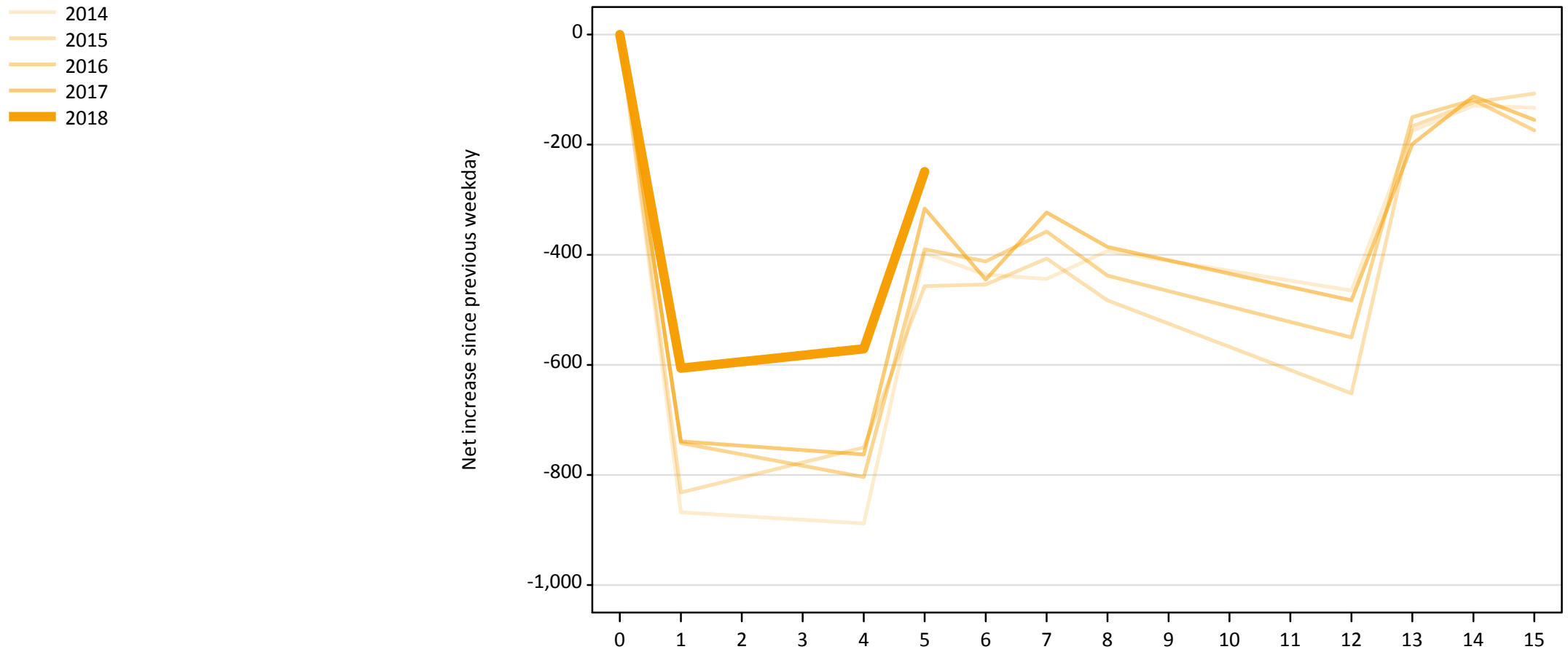


A.21 Placed through Clearing only: Daily net change (from Northern Ireland)

Net increase since previous weekday (2018 cycle up to 5 days after A level results day)

Applicant status, days since A level results day		2014	2015	2016	2017	2018
Placed through Clearing only	0	0	0	0	0	0
	1	10	30	90	120	110
	4	210	230	260	320	220
	5	140	90	70	140	120
	6	120	110	100	130	
	7	70	80	100	120	
	8	50	60	70	80	
	12	150	110	80	120	
	13	40	50	50	30	
	14	50	30	40	50	
	15	30	50	40	30	

A.22 Holding Offer: Daily net change (from Northern Ireland)
Net increase since previous weekday (2018 cycle up to 5 days after A level results day)



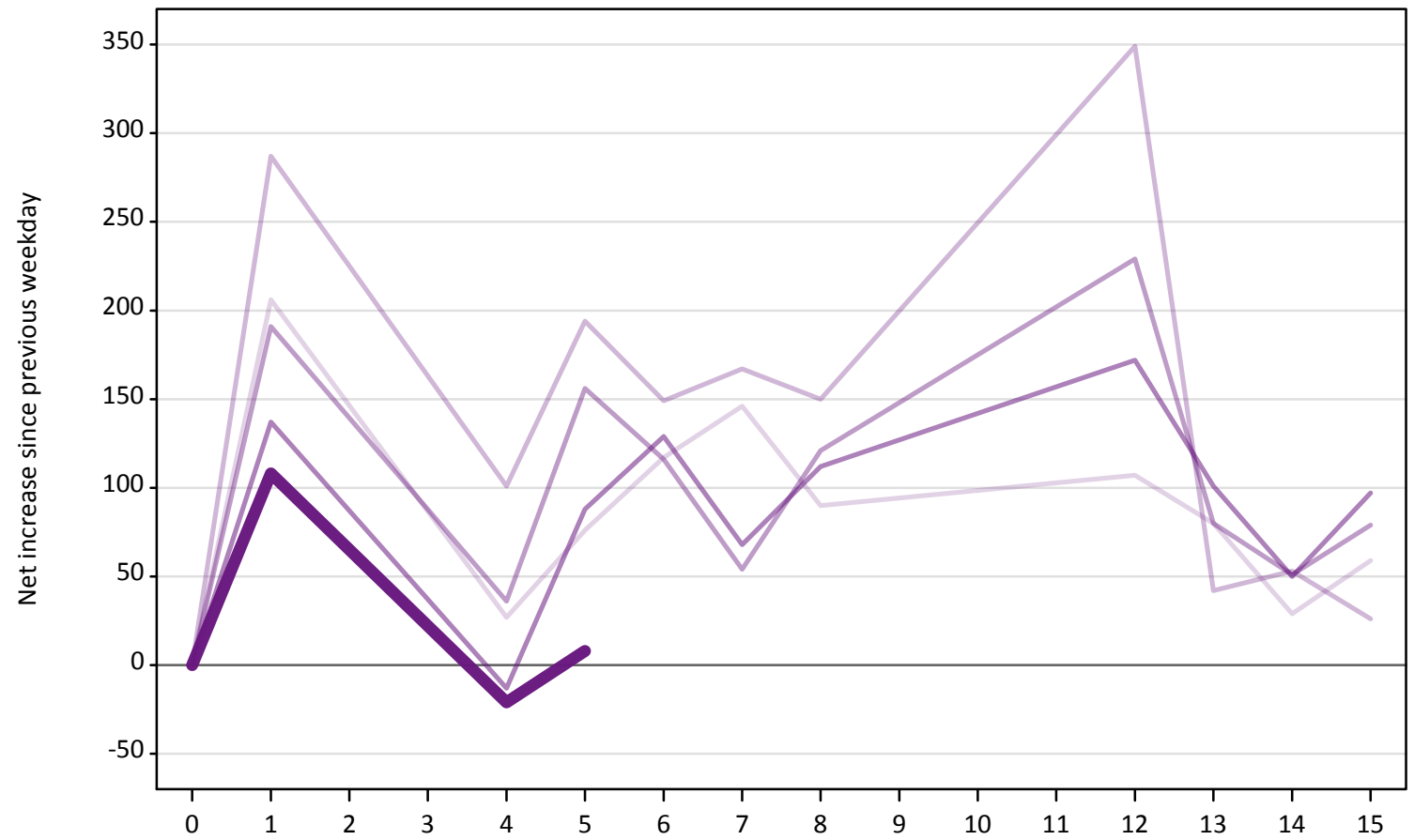
A.23 Holding Offer: Daily net change (from Northern Ireland)

Net increase since previous weekday (2018 cycle up to 5 days after A level results day)

Applicant status, days since A level results day		2014	2015	2016	2017	2018
Holding Offer	0	0	0	0	0	0
	1	-870	-830	-740	-740	-610
	4	-890	-750	-800	-760	-570
	5	-400	-460	-390	-320	-250
	6	-440	-450	-410	-450	
	7	-440	-410	-360	-320	
	8	-390	-480	-440	-390	
	12	-470	-650	-550	-480	
	13	-180	-170	-150	-200	
	14	-130	-120	-120	-110	
	15	-130	-110	-170	-160	

A.24 Free to be placed in Clearing: Daily net change (from Northern Ireland)
Net increase since previous weekday (2018 cycle up to 5 days after A level results day)

- 2014
- 2015
- 2016
- 2017
- 2018



A.25 Free to be placed in Clearing: Daily net change (from Northern Ireland)
 Net increase since previous weekday (2018 cycle up to 5 days after A level results day)

Applicant status, days since A level results day		2014	2015	2016	2017	2018
Free to be placed in Clearing	0	0	0	0	0	0
	1	210	290	190	140	110
	4	30	100	40	-10	-20
	5	80	190	160	90	10
	6	120	150	120	130	
	7	150	170	50	70	
	8	90	150	120	110	
	12	110	350	230	170	
	13	80	40	80	100	
	14	30	50	50	50	
	15	60	30	80	100	