

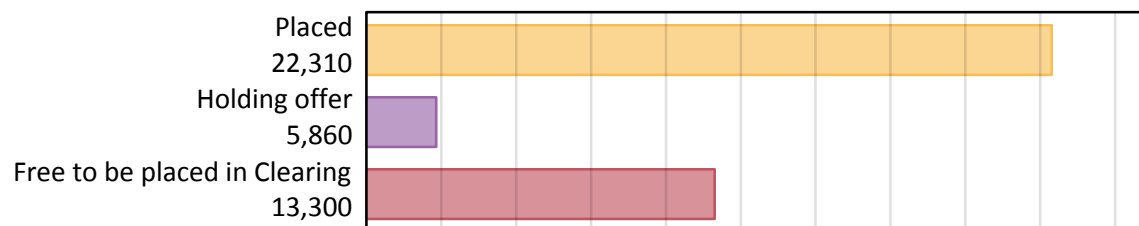
# Daily Clearing Analysis: Overview

## B7 Nursing analysis at 00:05 on Tuesday 21 August 2018 (5 days after A level results day)

### AB.1 Placed applicants to nursing from the UK, 2018 cycle

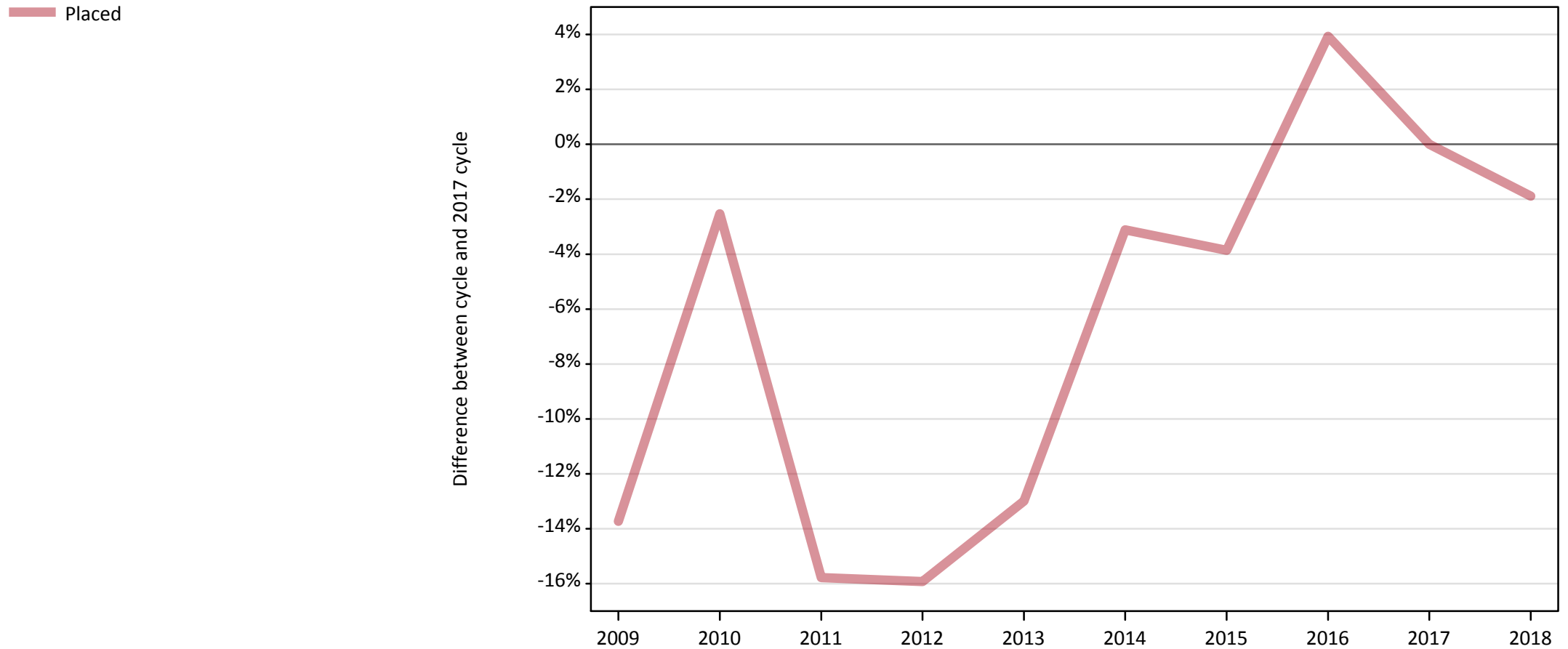
Applicant type	Status	2018
Main scheme	Placed (Clearing)	750
	Placed (Adjustment)	10
	Placed (Firm)	19,980
	Placed (Insurance)	440
	Placed (Other)	920
	Holding offer	5,860
	Free to be placed in Clearing	13,300
Direct to Clearing	Placed (Direct to Clearing)	220
	Other (Direct to Clearing)	420
All applicants	Placed	22,310

### AB.2 Summary of nursing applicants who are placed, holding offers or free to be placed in Clearing ( the UK )



### AB.3 Placed applicants to nursing from the UK: 5 days after A level results day

Placed applicants to nursing: difference between cycle and 2017 cycle



Note: The percentage change is not plotted in the above chart for groups with fewer than 30 placed applicants in any one cycle.

#### AB.4 Placed applicants to nursing from the UK: 5 days after A level results day

Placed applicants to nursing: applicants at 5 days after A level results day

Applicant type	Status	2009	2010	2011	2012	2013	2014	2015	2016	2017	2018
All applicants	Placed	19,620	22,160	19,150	19,120	19,780	22,030	21,860	23,630	22,740	22,310

#### AB.5 Placed applicants to nursing from the UK: 5 days after A level results day

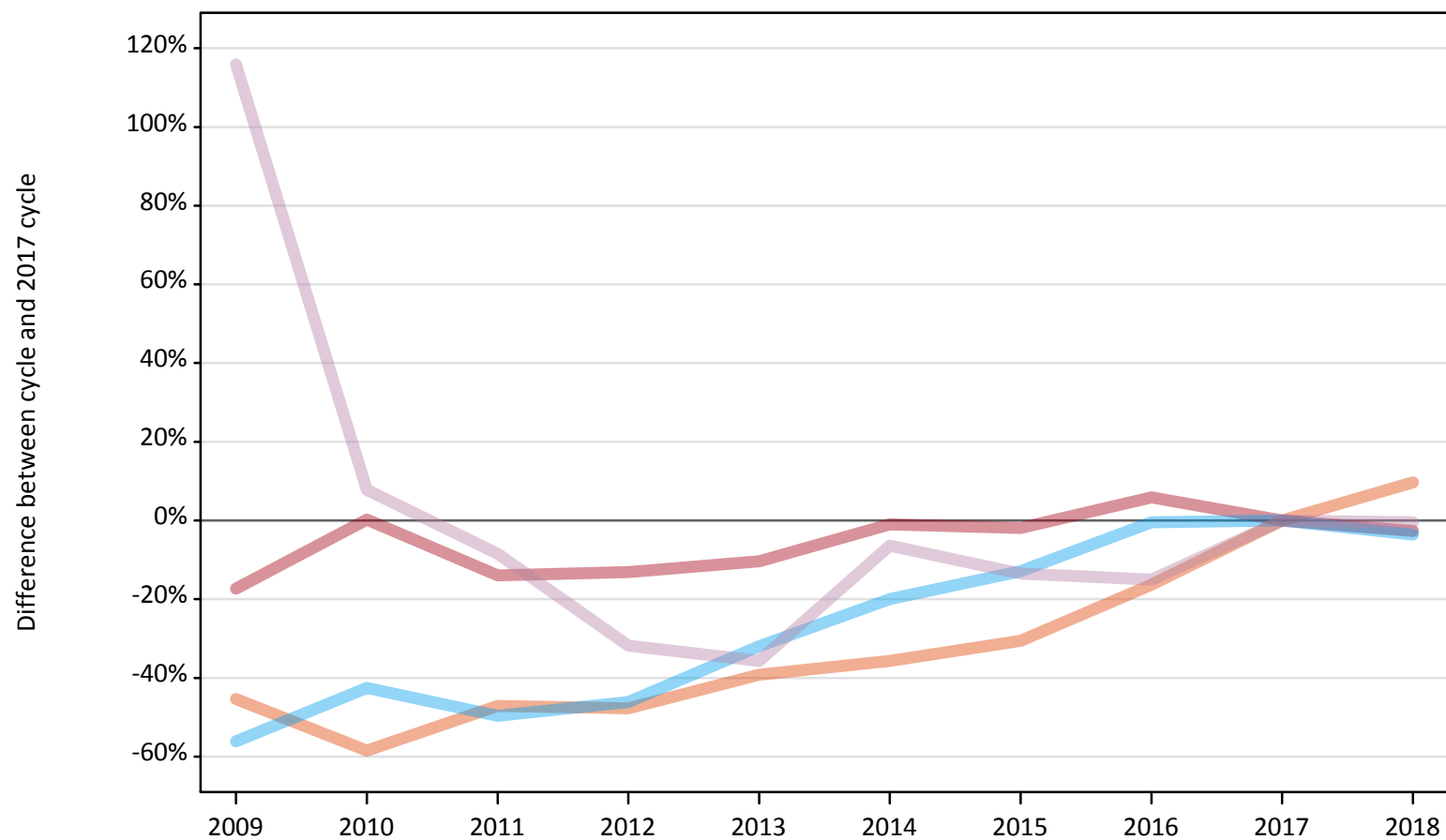
Placed applicants to nursing: difference between cycle and 2017 cycle

Applicant type	Status	2009	2010	2011	2012	2013	2014	2015	2016	2017	2018
All applicants	Placed	-14%	-3%	-16%	-16%	-13%	-3%	-4%	4%	0%	-2%

Note: The percentage change is not recorded in the above table for groups with fewer than 10 placed applicants in that cycle or in the 2017 cycle.

**AB.6 Placed main scheme applicants to nursing from the UK: 5 days after A level results day**  
All Main scheme placed routes (excluding Adjustment): difference between cycle and 2017 cycle

- Placed (Clearing)
- Placed (Firm)
- Placed (Insurance)
- Placed (Other)



Note: The percentage change is not plotted in the above chart for groups with fewer than 30 placed applicants in any one cycle.

**AB.7 Placed main scheme applicants to nursing from the UK: 5 days after A level results day**

All Main scheme placed routes (excluding Adjustment): applicants at 5 days after A level results day

Applicant type	Status	2009	2010	2011	2012	2013	2014	2015	2016	2017	2018
Main scheme	Placed (Clearing)	370	280	360	360	410	440	470	570	680	750
	Placed (Firm)	16,980	20,570	17,670	17,830	18,400	20,330	20,130	21,740	20,530	19,980
	Placed (Insurance)	200	260	230	240	310	360	390	450	450	440
	Placed (Other)	2,000	1,000	850	630	600	870	800	790	930	920

**AB.8 Placed main scheme applicants to nursing from the UK: 5 days after A level results day**

All Main scheme placed routes (excluding Adjustment): difference between cycle and 2017 cycle

Applicant type	Status	2009	2010	2011	2012	2013	2014	2015	2016	2017	2018
Main scheme	Placed (Clearing)	-45%	-58%	-47%	-48%	-39%	-36%	-31%	-16%	0%	10%
	Placed (Firm)	-17%	0%	-14%	-13%	-10%	-1%	-2%	6%	0%	-3%
	Placed (Insurance)	-56%	-43%	-50%	-46%	-32%	-20%	-13%	-0%	0%	-4%
	Placed (Other)	116%	8%	-8%	-32%	-36%	-6%	-14%	-15%	0%	-0%

Note: The percentage change is not recorded in the above table for groups with fewer than 10 placed applicants in that cycle or in the 2017 cycle.

**AB.9 Main scheme applicants placed to nursing through adjustment: 5 days after A level results day**

Placed through adjustment: difference between cycle and 2017 cycle

**[This chart is not part of this report]**

**AB.10 Main scheme applicants placed to nursing through adjustment: 5 days after A level results day**

Placed through adjustment: applicants at 5 days after A level results day

Applicant type	Status	2009	2010	2011	2012	2013	2014	2015	2016	2017	2018
Main scheme	Placed (Adjustment)	0	0	0	0	0	10	10	0	10	10

**AB.11 Main scheme applicants placed to nursing through adjustment: 5 days after A level results day**

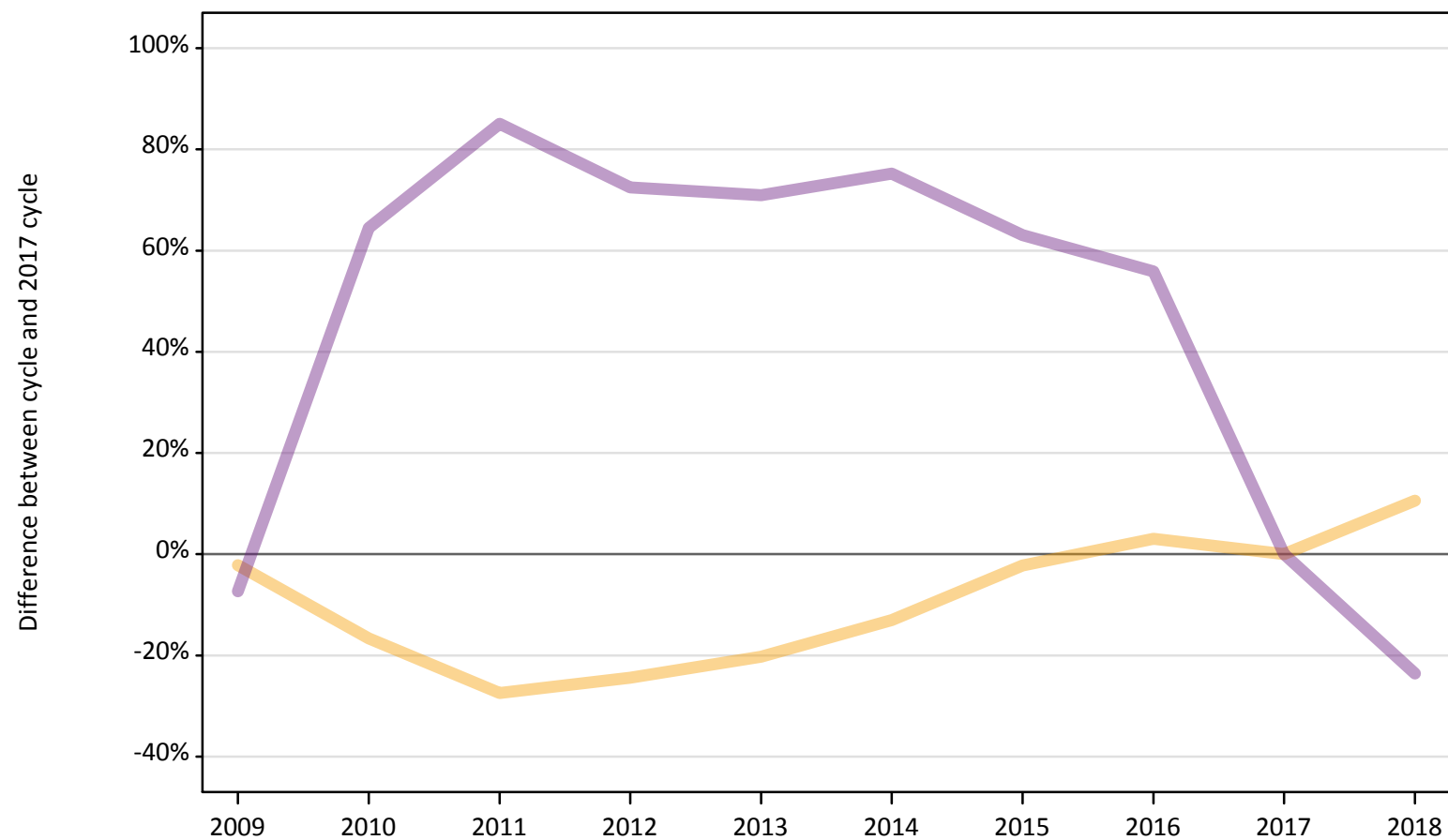
Placed through adjustment: difference between cycle and 2017 cycle

**[This table is not part of this report]**

## AB.12 Main scheme applicants to nursing not currently placed from the UK: 5 days after A level results day

Applicants in unplaced states: difference between cycle and 2017 cycle

— Holding offer  
— Free to be placed in Clearing



Note: The percentage change is not plotted in the above chart for groups with fewer than 30 unplaced applicants in any one cycle.

**AB.13 Main scheme applicants to nursing not currently placed from the UK: 5 days after A level results day**

Applicants in unplaced states: applicants at 5 days after A level results day

Applicant type	Status	2009	2010	2011	2012	2013	2014	2015	2016	2017	2018
Main scheme	Holding offer	5,190	4,420	3,850	4,010	4,230	4,610	5,180	5,460	5,300	5,860
	Free to be placed in Clearing	16,130	28,620	32,210	30,010	29,750	30,490	28,370	27,120	17,400	13,300

**AB.14 Main scheme applicants to nursing not currently placed from the UK: 5 days after A level results day**

Applicants in unplaced states: difference between cycle and 2017 cycle

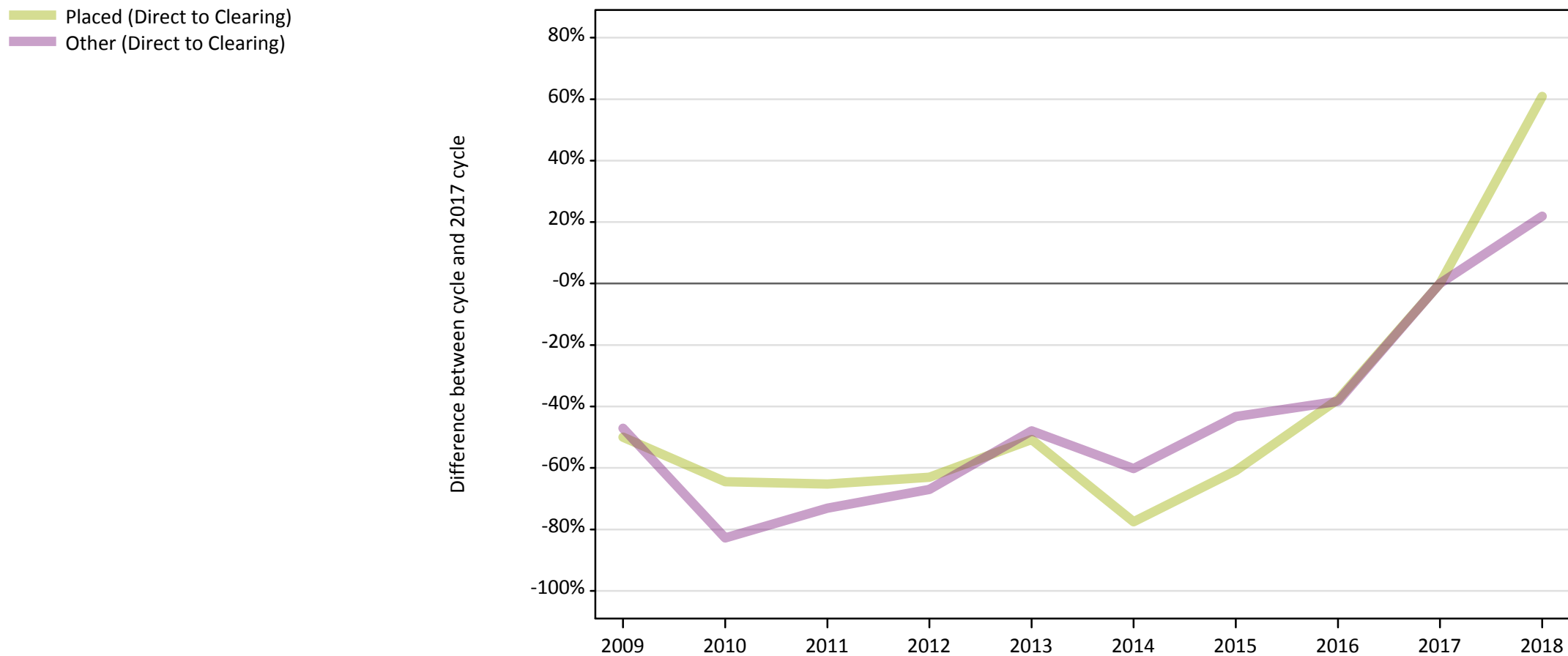
Applicant type	Status	2009	2010	2011	2012	2013	2014	2015	2016	2017	2018
Main scheme	Holding offer	-2%	-17%	-27%	-24%	-20%	-13%	-2%	3%	0%	11%
	Free to be placed in Clearing	-7%	64%	85%	72%	71%	75%	63%	56%	0%	-24%

Note: The percentage change is not recorded in the above table for groups with fewer than 10 unplaced applicants in that cycle or in the 2017 cycle.



## AB.15 Direct to Clearing applicants from the UK: 5 days after A level results day

Direct to Clearing: difference between cycle and 2017 cycle



Note: The percentage change is not plotted in the above chart for groups with fewer than 30 placed applicants in any one cycle.

**AB.16 Direct to Clearing applicants from the UK: 5 days after A level results day**

Direct to Clearing 5 days after A level results day

Applicant type	Status	2009	2010	2011	2012	2013	2014	2015	2016	2017	2018
Direct to Clearing	Placed (Direct to Clearing)	70	50	50	50	70	30	50	90	140	220
	Other (Direct to Clearing)	180	60	90	110	180	140	190	210	340	420

**AB.17 Direct to Clearing applicants from the UK: 5 days after A level results day**

Direct to Clearing: difference between cycle and 2017 cycle

Applicant type	Status	2009	2010	2011	2012	2013	2014	2015	2016	2017	2018
Direct to Clearing	Placed (Direct to Clearing)	-50%	-64%	-65%	-63%	-51%	-78%	-61%	-38%	0%	61%
	Other (Direct to Clearing)	-47%	-83%	-73%	-67%	-48%	-60%	-43%	-38%	0%	22%

Note: The percentage change is not recorded in the above table for groups with fewer than 10 placed applicants in that cycle or in the 2017 cycle.