

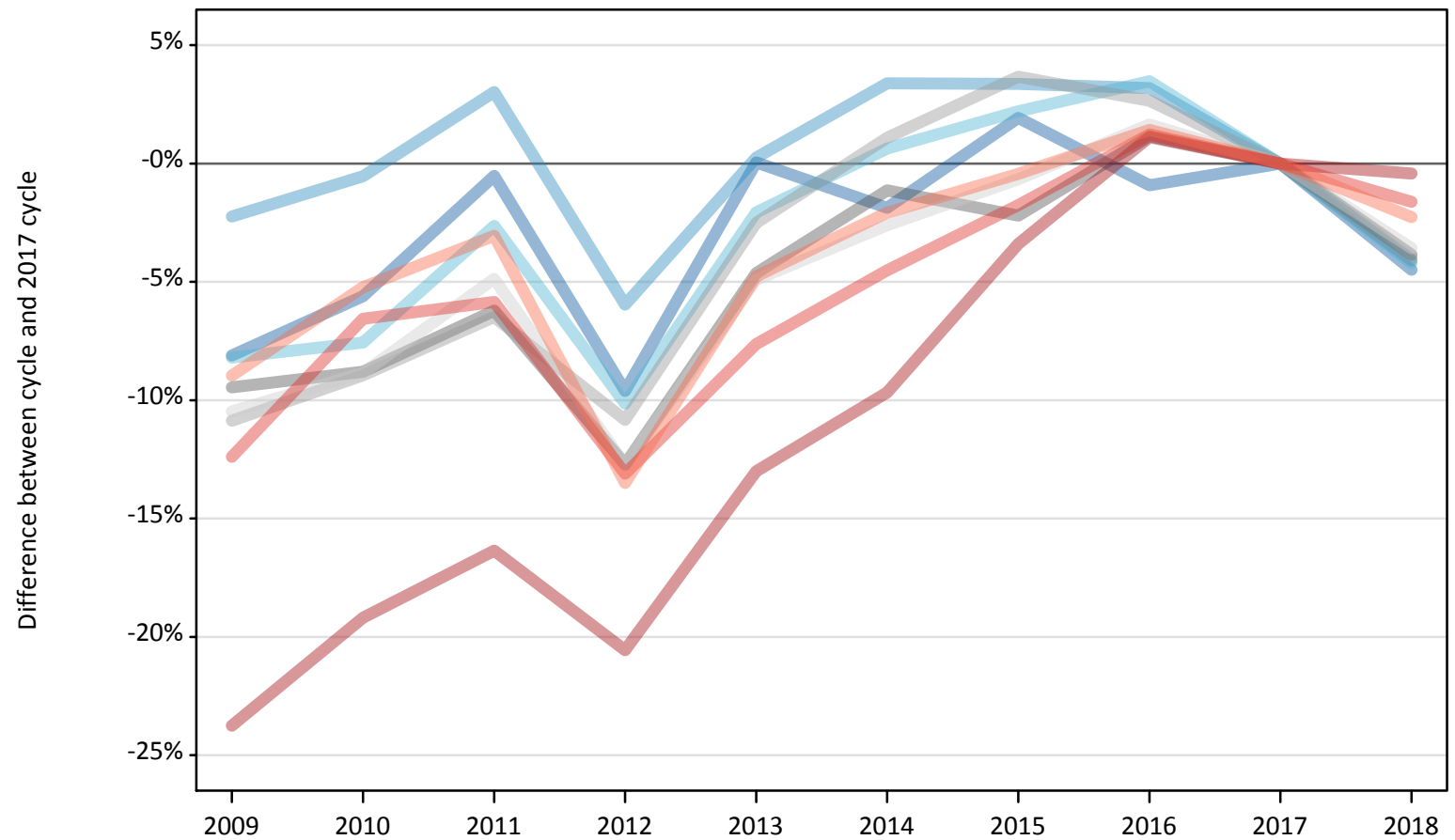
Daily Clearing Analysis: Region

Analysis at 00:05 on Monday 20 August 2018 (4 days after A level results day)

R.1 Placed applicants by region of domicile: 4 days after A level results day

Placed applicants: change relative to 2017 cycle totals

- North East
- North West
- Yorkshire and The Humber
- East Midlands
- West Midlands
- East of England
- London
- South East
- South West



Note: The percentage change is not plotted in the above chart for groups with fewer than 30 placed applicants in any one cycle.

R.2 Placed applicants by region of domicile: 4 days after A level results day

Applicant Status	Domicile	2009	2010	2011	2012	2013	2014	2015	2016	2017	2018
Placed	North East	13,350	13,720	14,450	13,130	14,540	14,260	14,810	14,400	14,530	13,880
	North West	42,320	43,060	44,600	40,710	43,410	44,760	44,750	44,670	43,290	41,520
	Yorkshire and The Humber	28,000	28,190	29,700	27,400	29,870	30,690	31,170	31,560	30,500	29,220
	East Midlands	23,990	24,160	24,850	23,120	25,260	26,190	25,910	26,800	26,490	25,470
	West Midlands	31,200	31,870	32,730	31,210	34,120	35,380	36,280	35,930	35,000	33,590
	East of England	31,700	32,270	33,680	30,890	33,660	34,480	35,170	35,990	35,400	34,140
	London	49,200	52,150	53,970	51,270	56,140	58,290	62,340	65,250	64,530	64,260
	South East	49,300	52,590	52,990	48,900	51,990	53,740	55,290	56,970	56,280	55,370
	South West	28,690	29,870	30,550	27,260	30,010	30,860	31,380	31,960	31,510	30,800
	(England total)	297,740	307,870	317,510	293,890	319,000	328,640	337,090	343,510	337,540	328,230
	Scotland	25,590	27,200	26,940	26,810	27,480	28,340	31,170	32,510	33,190	33,730
	Northern Ireland	11,460	11,910	12,180	11,300	12,630	12,610	12,420	13,270	12,870	12,100
	Wales	16,670	16,040	15,860	16,630	16,930	17,610	18,070	18,410	17,960	17,530
	UK	351,470	363,020	372,490	348,630	376,040	387,200	398,750	407,700	401,560	391,600

R.3 Placed applicants by region of domicile: 4 days after A level results day

Placed applicants: change relative to 2017 cycle totals

Applicant Status	Domicile	2009	2010	2011	2012	2013	2014	2015	2016	2017	2018
Placed	North East	-8%	-6%	-1%	-10%	0%	-2%	2%	-1%	0%	-4%
	North West	-2%	-1%	3%	-6%	0%	3%	3%	3%	0%	-4%
	Yorkshire and The Humber	-8%	-8%	-3%	-10%	-2%	1%	2%	3%	0%	-4%
	East Midlands	-9%	-9%	-6%	-13%	-5%	-1%	-2%	1%	0%	-4%
	West Midlands	-11%	-9%	-6%	-11%	-3%	1%	4%	3%	0%	-4%
	East of England	-10%	-9%	-5%	-13%	-5%	-3%	-1%	2%	0%	-4%
	London	-24%	-19%	-16%	-21%	-13%	-10%	-3%	1%	0%	-0%
	South East	-12%	-7%	-6%	-13%	-8%	-5%	-2%	1%	0%	-2%
	South West	-9%	-5%	-3%	-13%	-5%	-2%	-0%	1%	0%	-2%
	(England total)	-12%	-9%	-6%	-13%	-5%	-3%	-0%	2%	0%	-3%
	Scotland	-23%	-18%	-19%	-19%	-17%	-15%	-6%	-2%	0%	2%
	Northern Ireland	-11%	-7%	-5%	-12%	-2%	-2%	-3%	3%	0%	-6%
	Wales	-7%	-11%	-12%	-7%	-6%	-2%	1%	3%	0%	-2%
	UK	-12%	-10%	-7%	-13%	-6%	-4%	-1%	2%	0%	-2%

Note: The percentage change is not recorded in the above table for groups with fewer than 10 placed applicants in that cycle or in the 2017 cycle.

R.4 Placed applicants by region of domicile: 4 days after A level results day

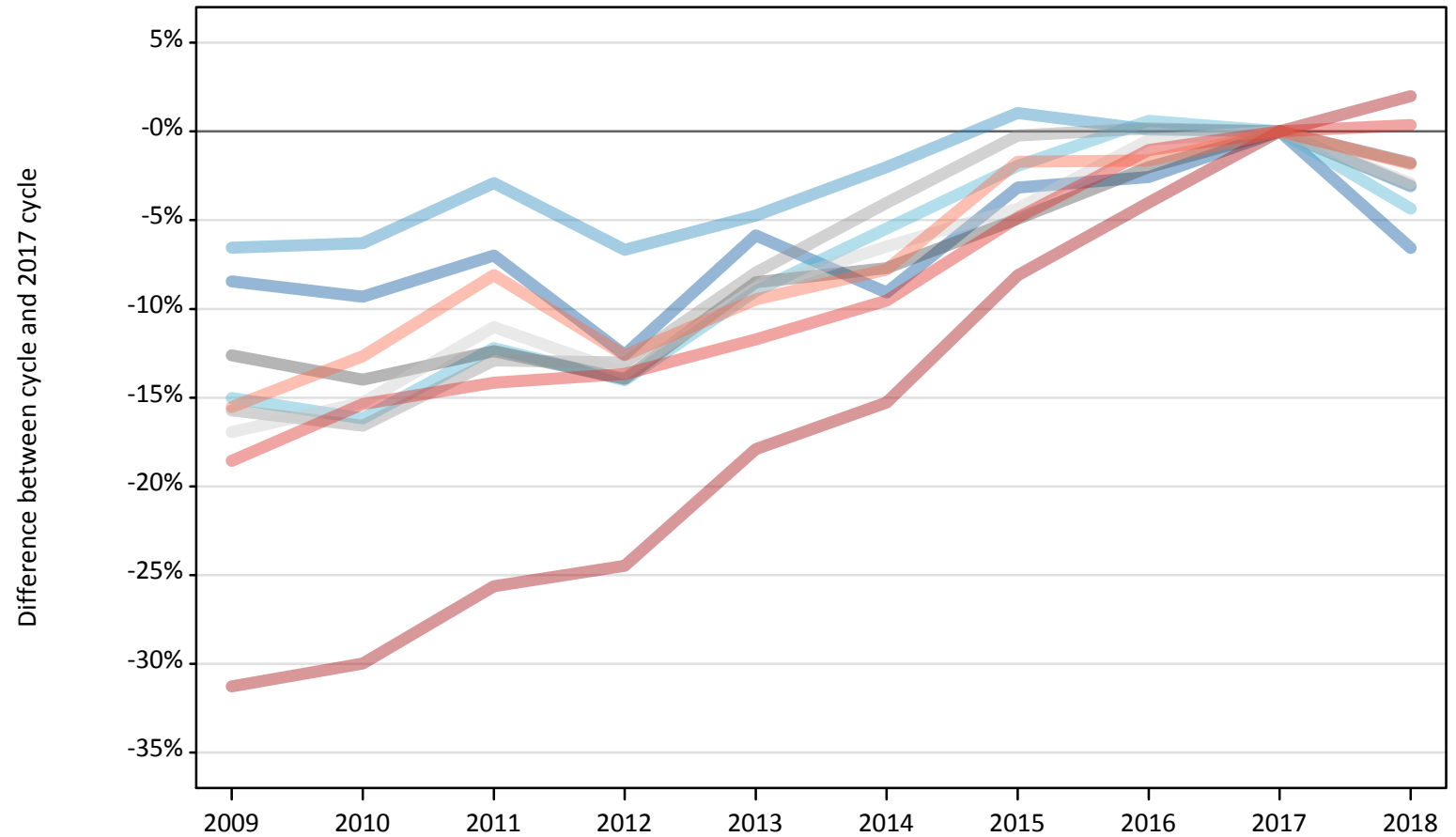
Placed applicants: absolute change relative to 2017 cycle totals

Applicant Status	Domicile	2009	2010	2011	2012	2013	2014	2015	2016	2017	2018
Placed	North East	-1,180	-820	-80	-1,400	10	-270	280	-130	0	-650
	North West	-970	-230	1,310	-2,580	110	1,470	1,460	1,380	0	-1,780
	Yorkshire and The Humber	-2,500	-2,310	-800	-3,100	-630	190	670	1,060	0	-1,280
	East Midlands	-2,510	-2,330	-1,650	-3,370	-1,230	-300	-580	310	0	-1,020
	West Midlands	-3,800	-3,130	-2,270	-3,790	-880	380	1,290	930	0	-1,410
	East of England	-3,710	-3,130	-1,730	-4,510	-1,740	-920	-240	580	0	-1,270
	London	-15,330	-12,380	-10,560	-13,270	-8,390	-6,250	-2,200	720	0	-270
	South East	-6,980	-3,690	-3,290	-7,380	-4,290	-2,540	-990	690	0	-910
	South West	-2,830	-1,650	-960	-4,250	-1,500	-660	-140	450	0	-720
	(England total)	-39,800	-29,670	-20,030	-43,650	-18,550	-8,900	-450	5,970	0	-9,310
	Scotland	-7,610	-5,990	-6,260	-6,390	-5,720	-4,860	-2,030	-680	0	540
	Northern Ireland	-1,410	-960	-690	-1,570	-240	-260	-450	400	0	-770
	Wales	-1,290	-1,920	-2,100	-1,330	-1,020	-350	110	450	0	-430
	UK	-50,100	-38,540	-29,070	-52,930	-25,530	-14,360	-2,810	6,140	0	-9,970

R.5 Placed 18 year old applicants by region of domicile: 4 days after A level results day

Placed 18 year old applicants: change relative to 2017 cycle totals

- North East
- North West
- Yorkshire and The Humber
- East Midlands
- West Midlands
- East of England
- London
- South East
- South West



Note: The percentage change is not plotted in the above chart for groups with fewer than 30 placed applicants in any one cycle.

R.6 Placed 18 year old applicants by region of domicile: 4 days after A level results day

Applicant Status	Domicile	2009	2010	2011	2012	2013	2014	2015	2016	2017	2018
Placed	North East	7,580	7,500	7,700	7,230	7,790	7,520	8,010	8,060	8,280	7,730
	North West	23,910	23,980	24,840	23,880	24,370	25,070	25,850	25,610	25,590	24,800
	Yorkshire and The Humber	15,560	15,350	16,070	15,740	16,670	17,310	17,960	18,420	18,310	17,520
	East Midlands	13,760	13,540	13,790	13,550	14,410	14,530	14,970	15,430	15,740	15,460
	West Midlands	17,100	16,920	17,670	17,640	18,670	19,470	20,240	20,320	20,290	19,670
	East of England	18,390	18,760	19,700	19,130	20,180	20,710	21,180	22,040	22,140	21,500
	London	24,500	24,960	26,510	26,920	29,260	30,200	32,750	34,220	35,650	36,350
	South East	27,900	29,000	29,410	29,580	30,250	31,000	32,600	33,900	34,260	34,390
	South West	14,430	14,920	15,700	14,920	15,460	15,750	16,790	16,800	17,080	16,760
	(England total)	163,120	164,930	171,390	168,600	177,060	181,560	190,350	194,810	197,330	194,180
	Scotland	14,150	14,390	13,750	13,840	13,960	14,210	14,310	14,550	14,530	14,550
	Northern Ireland	7,940	7,800	7,700	7,270	7,880	7,670	7,590	7,860	7,780	7,240
	Wales	9,540	9,180	8,850	9,300	9,300	9,610	10,080	10,280	9,970	9,830
	UK	194,740	196,290	201,690	199,010	208,210	213,040	222,320	227,500	229,610	225,800

R.7 Placed 18 year old applicants by region of domicile: 4 days after A level results day

Placed 18 year old applicants: change relative to 2017 cycle totals

Applicant Status	Domicile	2009	2010	2011	2012	2013	2014	2015	2016	2017	2018
Placed	North East	-8%	-9%	-7%	-13%	-6%	-9%	-3%	-3%	0%	-7%
	North West	-7%	-6%	-3%	-7%	-5%	-2%	1%	0%	0%	-3%
	Yorkshire and The Humber	-15%	-16%	-12%	-14%	-9%	-5%	-2%	1%	0%	-4%
	East Midlands	-13%	-14%	-12%	-14%	-8%	-8%	-5%	-2%	0%	-2%
	West Midlands	-16%	-17%	-13%	-13%	-8%	-4%	-0%	0%	0%	-3%
	East of England	-17%	-15%	-11%	-14%	-9%	-6%	-4%	-0%	0%	-3%
	London	-31%	-30%	-26%	-24%	-18%	-15%	-8%	-4%	0%	2%
	South East	-19%	-15%	-14%	-14%	-12%	-10%	-5%	-1%	0%	0%
	South West	-16%	-13%	-8%	-13%	-9%	-8%	-2%	-2%	0%	-2%
	(England total)	-17%	-16%	-13%	-15%	-10%	-8%	-4%	-1%	0%	-2%
	Scotland	-3%	-1%	-5%	-5%	-4%	-2%	-2%	0%	0%	0%
	Northern Ireland	2%	0%	-1%	-7%	1%	-1%	-2%	1%	0%	-7%
	Wales	-4%	-8%	-11%	-7%	-7%	-4%	1%	3%	0%	-1%
	UK	-15%	-15%	-12%	-13%	-9%	-7%	-3%	-1%	0%	-2%

Note: The percentage change is not recorded in the above table for groups with fewer than 10 placed applicants in that cycle or in the 2017 cycle.

R.8 Placed 18 year old applicants by region of domicile: 4 days after A level results day

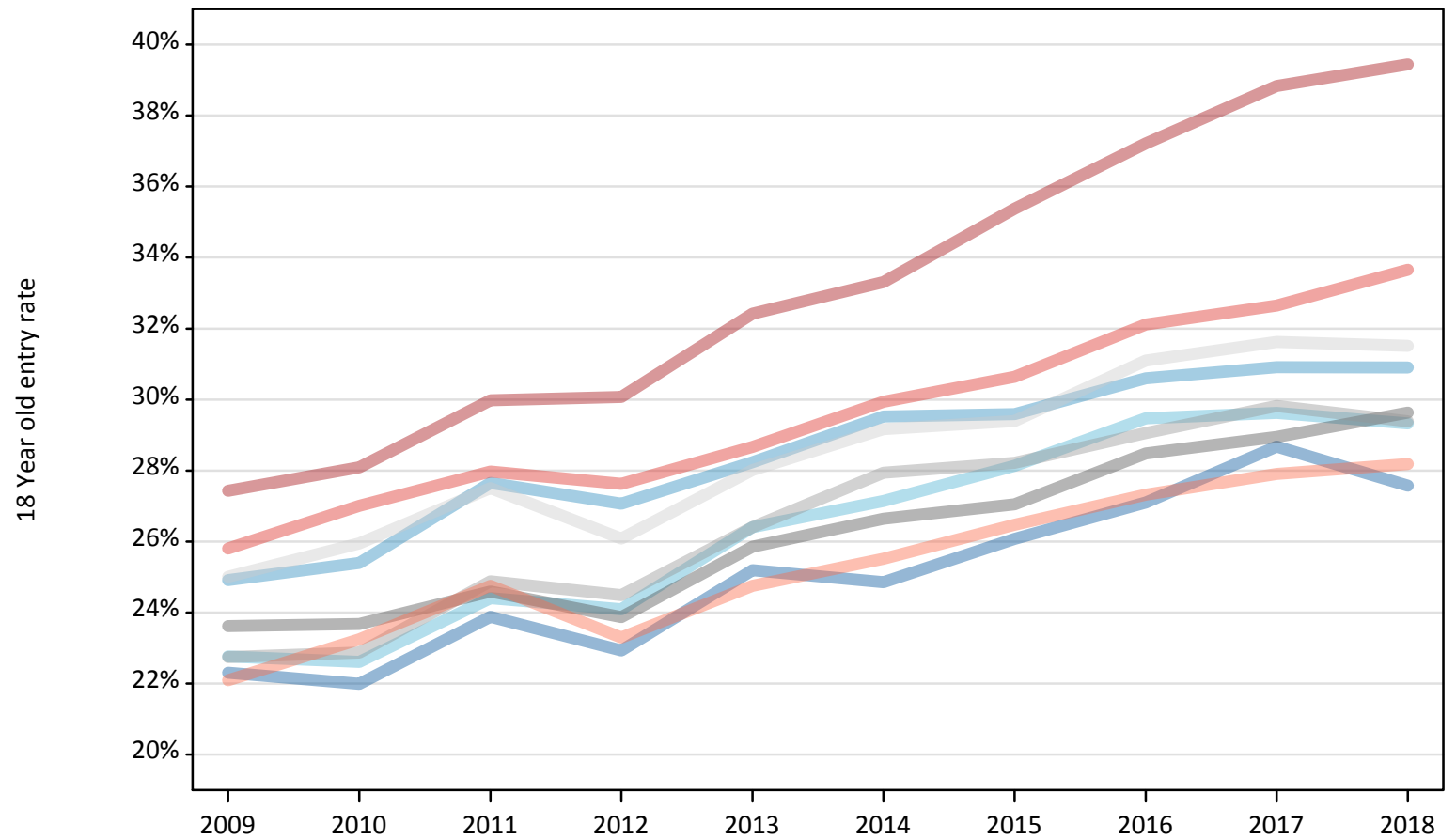
Placed 18 year old applicants: absolute change relative to 2017 cycle totals

Applicant Status	Domicile	2009	2010	2011	2012	2013	2014	2015	2016	2017	2018
Placed	North East	-700	-770	-580	-1,040	-490	-750	-260	-210	0	-540
	North West	-1,680	-1,610	-750	-1,710	-1,210	-510	270	30	0	-790
	Yorkshire and The Humber	-2,750	-2,960	-2,240	-2,570	-1,650	-1,000	-360	110	0	-800
	East Midlands	-1,990	-2,200	-1,950	-2,190	-1,340	-1,210	-780	-320	0	-280
	West Midlands	-3,190	-3,370	-2,620	-2,640	-1,620	-820	-50	40	0	-620
	East of England	-3,750	-3,380	-2,440	-3,020	-1,960	-1,440	-960	-110	0	-650
	London	-11,150	-10,690	-9,140	-8,730	-6,390	-5,450	-2,890	-1,430	0	710
	South East	-6,360	-5,270	-4,850	-4,680	-4,010	-3,270	-1,670	-360	0	130
	South West	-2,650	-2,160	-1,380	-2,160	-1,620	-1,330	-290	-280	0	-320
	(England total)	-34,220	-32,410	-25,940	-28,740	-20,270	-15,770	-6,990	-2,530	0	-3,160
	Scotland	-390	-150	-780	-700	-580	-330	-230	20	0	20
	Northern Ireland	170	20	-80	-510	110	-110	-190	80	0	-540
	Wales	-430	-790	-1,120	-670	-670	-360	110	320	0	-140
	UK	-34,870	-33,320	-27,920	-30,610	-21,410	-16,570	-7,290	-2,110	0	-3,810

R.9 Placed 18 year old applicants by region of domicile: 4 days after A level results day

Placed 18 year old applicants: entry rate

- North East
- North West
- Yorkshire and The Humber
- East Midlands
- West Midlands
- East of England
- London
- South East
- South West



R.10 Placed 18 year old applicants by region of domicile: 4 days after A level results day

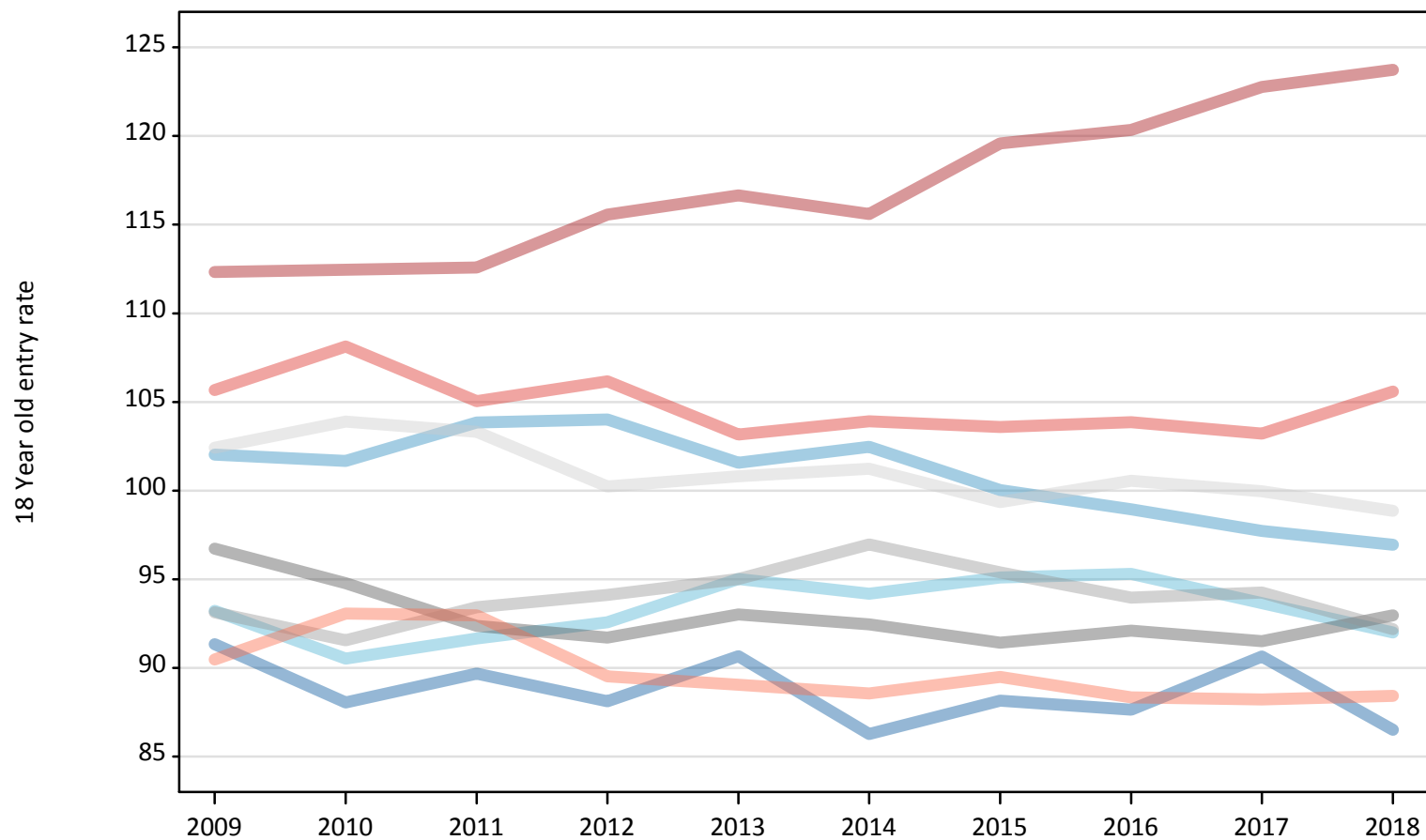
Placed 18 year old applicants: entry rate

Applicant Status	Domicile	2009	2010	2011	2012	2013	2014	2015	2016	2017	2018
Placed	North East	22.3%	22.0%	23.9%	22.9%	25.2%	24.9%	26.1%	27.1%	28.7%	27.6%
	North West	24.9%	25.4%	27.6%	27.1%	28.2%	29.5%	29.6%	30.6%	30.9%	30.9%
	Yorkshire and The Humber	22.8%	22.6%	24.4%	24.1%	26.4%	27.1%	28.1%	29.5%	29.6%	29.3%
	East Midlands	23.6%	23.7%	24.6%	23.9%	25.9%	26.6%	27.0%	28.5%	28.9%	29.6%
	West Midlands	22.7%	22.9%	24.9%	24.5%	26.4%	27.9%	28.2%	29.1%	29.8%	29.4%
	East of England	25.0%	26.0%	27.5%	26.1%	28.0%	29.2%	29.4%	31.1%	31.6%	31.5%
	London	27.4%	28.1%	30.0%	30.1%	32.4%	33.3%	35.4%	37.2%	38.8%	39.4%
	South East	25.8%	27.0%	28.0%	27.6%	28.7%	29.9%	30.6%	32.1%	32.6%	33.7%
	South West	22.1%	23.2%	24.8%	23.3%	24.8%	25.5%	26.5%	27.3%	27.9%	28.2%
	(England total)	24.4%	25.0%	26.6%	26.0%	27.8%	28.8%	29.6%	30.9%	31.6%	31.9%
	Scotland	21.8%	22.5%	21.9%	22.3%	22.7%	23.2%	23.8%	24.7%	25.3%	26.2%
	Northern Ireland	30.6%	30.6%	30.8%	28.9%	32.2%	31.6%	30.6%	32.1%	32.1%	31.2%
	Wales	23.6%	23.0%	22.9%	24.1%	24.6%	25.6%	26.7%	28.3%	28.1%	28.6%
	UK	24.4%	24.9%	26.2%	25.7%	27.4%	28.3%	29.0%	30.4%	31.0%	31.3%

R.11 Placed 18 year old applicants by region of domicile: 4 days after A level results day

Placed 18 year old applicants: entry rates (indexed to 100 = England)

- North East
- North West
- Yorkshire and The Humber
- East Midlands
- West Midlands
- East of England
- London
- South East
- South West



R.12 Placed 18 year old applicants by region of domicile: 4 days after A level results day

Placed 18 year old applicants: entry rate (indexed to 100 = England)

Applicant Status	Domicile	2009	2010	2011	2012	2013	2014	2015	2016	2017	2018
Placed	North East	91	88	90	88	91	86	88	88	91	87
	North West	102	102	104	104	102	102	100	99	98	97
	Yorkshire and The Humber	93	91	92	93	95	94	95	95	94	92
	East Midlands	97	95	92	92	93	92	91	92	92	93
	West Midlands	93	92	93	94	95	97	95	94	94	92
	East of England	102	104	103	100	101	101	99	101	100	99
	London	112	112	113	116	117	116	120	120	123	124
	South East	106	108	105	106	103	104	104	104	103	106
	South West	90	93	93	90	89	89	89	88	88	88
	(England total)	100	100	100	100	100	100	100	100	100	100