

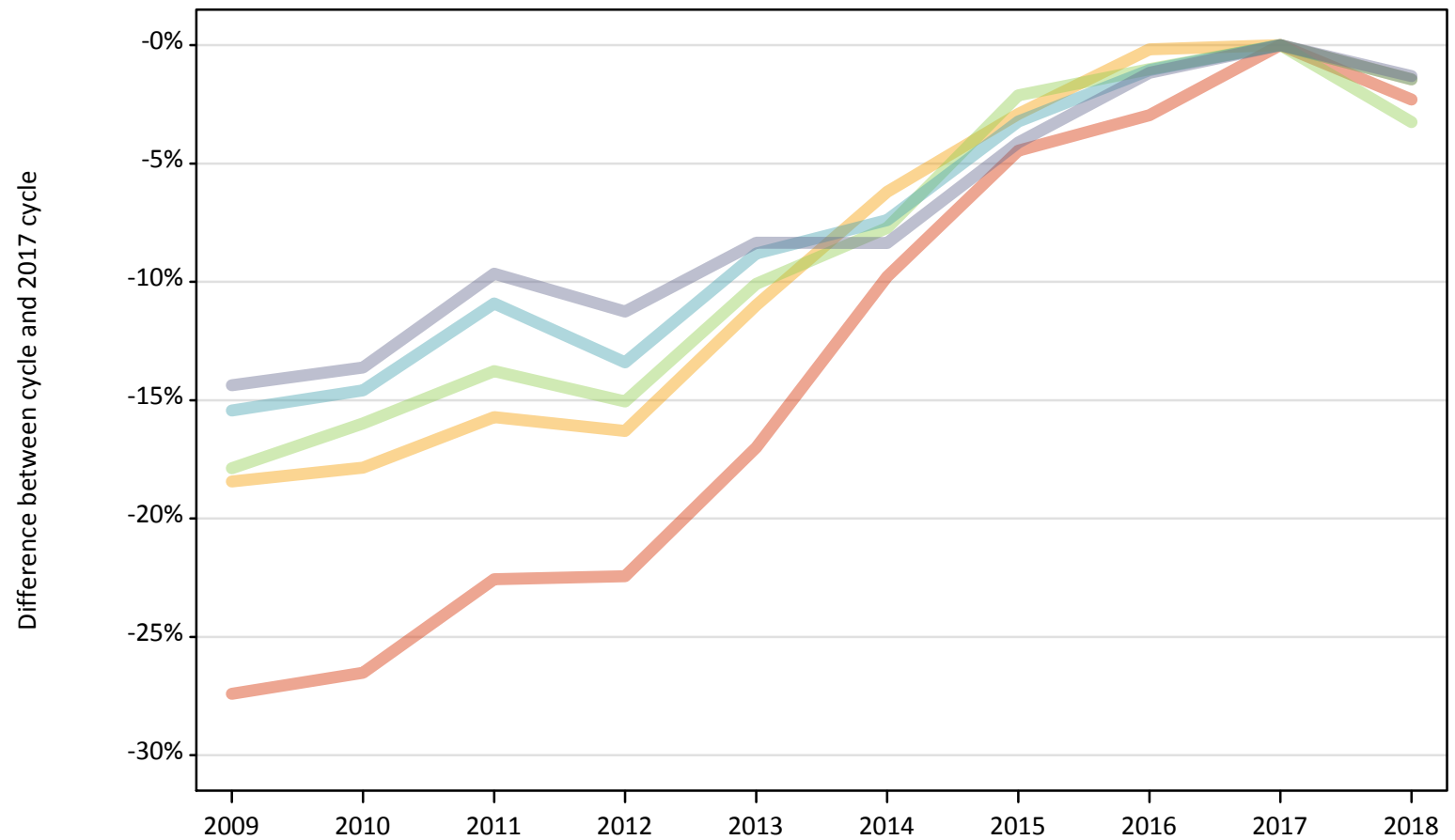
Daily Clearing Analysis: POLAR4

Analysis at 00:05 on Monday 20 August 2018 (4 days after A level results day)

P.1 Placed 18 year old applicants from England by POLAR4 quintile: 4 days after A level results day

Placed 18 year old applicants: change relative to 2017 cycle totals

- Quintile 1
- Quintile 2
- Quintile 3
- Quintile 4
- Quintile 5



Note: The percentage change is not plotted in the above chart for groups with fewer than 30 placed applicants in any one cycle.

P.2 Placed 18 year old applicants from England by POLAR4 quintile: 4 days after A level results day

Applicant Status	POLAR4	2009	2010	2011	2012	2013	2014	2015	2016	2017	2018
Placed	Quintile 1	15,480	15,670	16,510	16,540	17,700	19,240	20,370	20,690	21,330	20,840
	Quintile 2	24,130	24,300	24,930	24,760	26,330	27,750	28,720	29,530	29,580	29,150
	Quintile 3	30,120	30,810	31,620	31,150	32,970	33,840	35,900	36,300	36,670	35,480
	Quintile 4	37,910	38,290	39,930	38,820	40,880	41,510	43,380	44,350	44,830	44,180
	Quintile 5	55,040	55,530	58,080	57,050	58,910	58,910	61,640	63,530	64,280	63,440

P.3 Placed 18 year old applicants from England by POLAR4 quintile: 4 days after A level results day

Placed 18 year old applicants: change relative to 2017 cycle totals

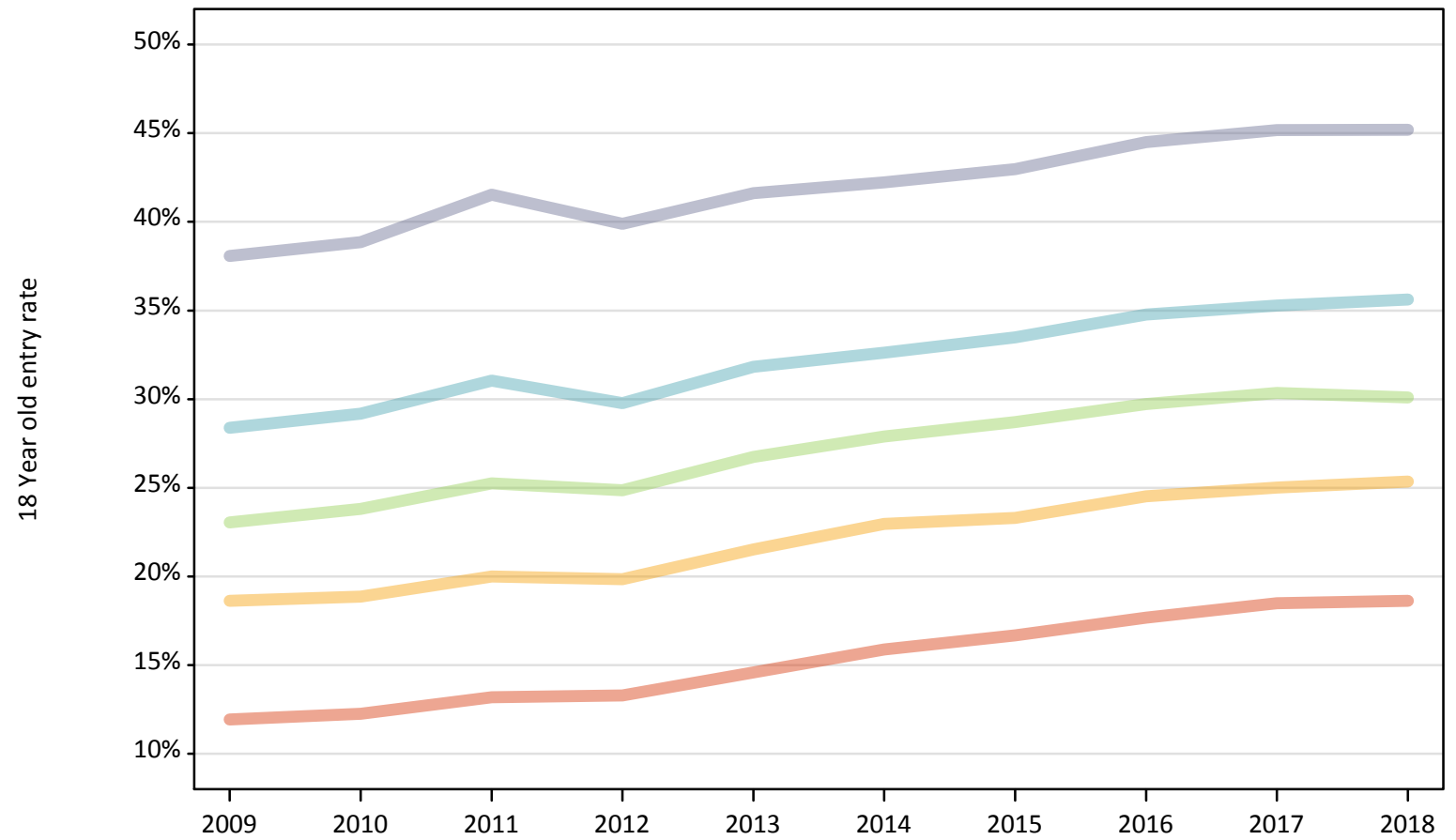
Applicant Status	POLAR4	2009	2010	2011	2012	2013	2014	2015	2016	2017	2018
Placed	Quintile 1	-27%	-27%	-23%	-22%	-17%	-10%	-4%	-3%	0%	-2%
	Quintile 2	-18%	-18%	-16%	-16%	-11%	-6%	-3%	-0%	0%	-1%
	Quintile 3	-18%	-16%	-14%	-15%	-10%	-8%	-2%	-1%	0%	-3%
	Quintile 4	-15%	-15%	-11%	-13%	-9%	-7%	-3%	-1%	0%	-1%
	Quintile 5	-14%	-14%	-10%	-11%	-8%	-8%	-4%	-1%	0%	-1%

Note: The percentage change is not recorded in the above table for groups with fewer than 10 placed applicants in that cycle or in the 2017 cycle.

P.4 Placed 18 year old applicants from England by POLAR4 quintile: 4 days after A level results day

Placed 18 year old applicants: entry rate

- Quintile 1
- Quintile 2
- Quintile 3
- Quintile 4
- Quintile 5



P.5 Placed 18 year old applicants from England by POLAR4 quintile: 4 days after A level results day

Placed 18 year old applicants: entry rate

Applicant Status	POLAR4	2009	2010	2011	2012	2013	2014	2015	2016	2017	2018
Placed	Quintile 1	11.9%	12.3%	13.2%	13.3%	14.6%	15.9%	16.7%	17.7%	18.5%	18.6%
	Quintile 2	18.6%	18.9%	20.0%	19.8%	21.5%	23.0%	23.3%	24.5%	25.0%	25.4%
	Quintile 3	23.0%	23.8%	25.2%	24.9%	26.7%	27.9%	28.7%	29.7%	30.3%	30.1%
	Quintile 4	28.4%	29.2%	31.0%	29.8%	31.8%	32.6%	33.5%	34.8%	35.3%	35.6%
	Quintile 5	38.1%	38.9%	41.5%	39.9%	41.6%	42.2%	43.0%	44.5%	45.2%	45.2%

P.6 Placed 18 year old applicants from England by POLAR4 quintile: 4 days after A level results day

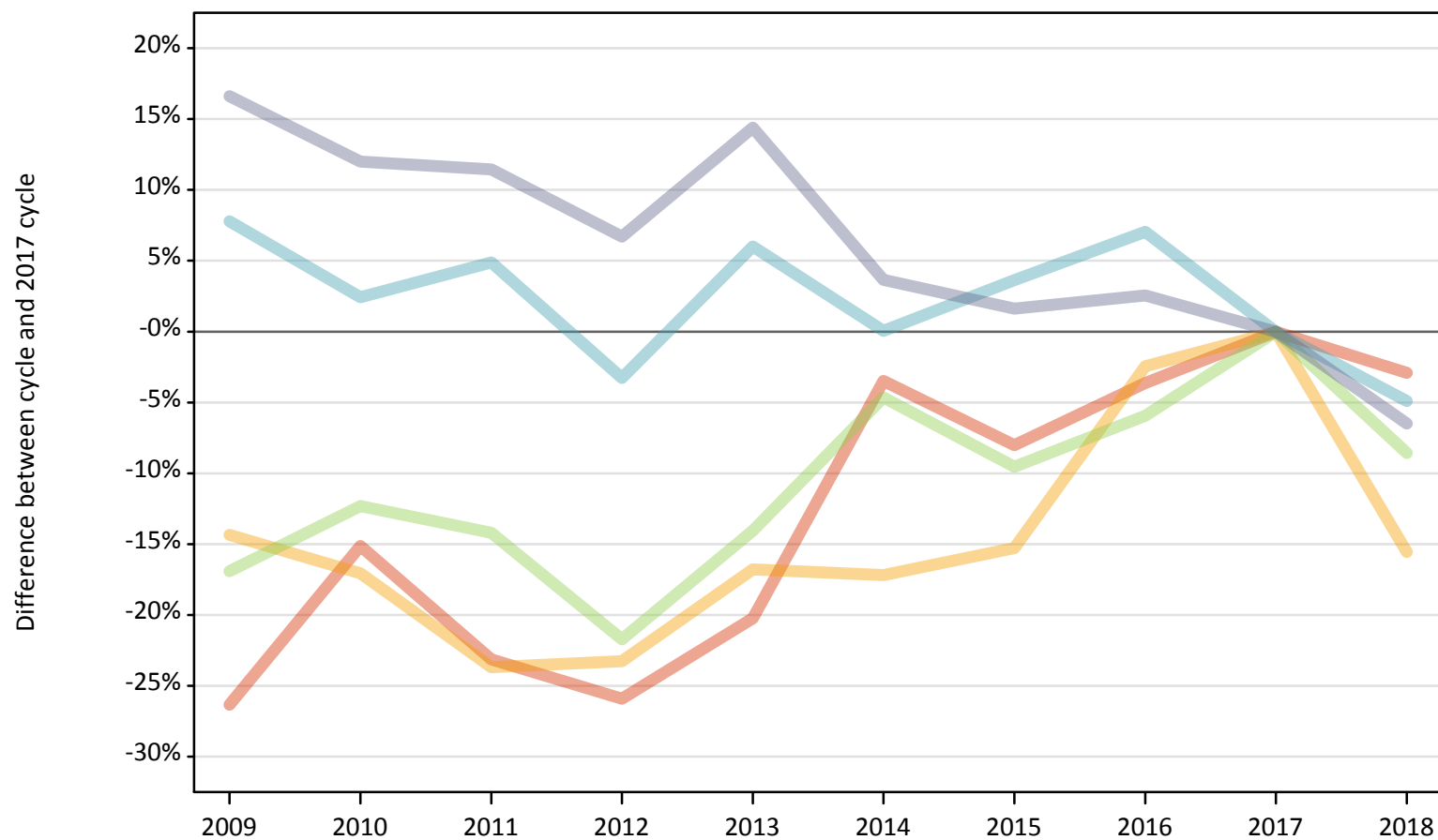
Placed 18 year old applicants: entry rate (indexed to 100 = Quintile 1)

Applicant Status	POLAR4	2009	2010	2011	2012	2013	2014	2015	2016	2017	2018
Placed	Quintile 1	100	100	100	100	100	100	100	100	100	100
	Quintile 2	156	154	152	149	148	145	140	139	135	136
	Quintile 3	193	194	191	187	183	176	172	168	164	162
	Quintile 4	238	238	235	224	218	206	201	197	191	191
	Quintile 5	319	317	315	300	286	266	258	252	244	243

P.7 Placed 18 year old applicants from Northern Ireland by POLAR4 quintile: 4 days after A level results day

Placed 18 year old applicants: change relative to 2017 cycle totals

- Quintile 1
- Quintile 2
- Quintile 3
- Quintile 4
- Quintile 5



Note: The percentage change is not plotted in the above chart for groups with fewer than 30 placed applicants in any one cycle.

P.8 Placed 18 year old applicants from Northern Ireland by POLAR4 quintile: 4 days after A level results day

Applicant Status	POLAR4	2009	2010	2011	2012	2013	2014	2015	2016	2017	2018
Placed	Quintile 1	510	580	530	510	550	660	630	660	690	670
	Quintile 2	630	610	560	570	620	610	630	720	740	620
	Quintile 3	1,110	1,170	1,140	1,040	1,140	1,270	1,200	1,250	1,330	1,220
	Quintile 4	2,050	1,950	1,990	1,840	2,020	1,900	1,970	2,040	1,900	1,810
	Quintile 5	3,620	3,470	3,460	3,310	3,550	3,210	3,150	3,180	3,100	2,900

P.9 Placed 18 year old applicants from Northern Ireland by POLAR4 quintile: 4 days after A level results day

Placed 18 year old applicants: change relative to 2017 cycle totals

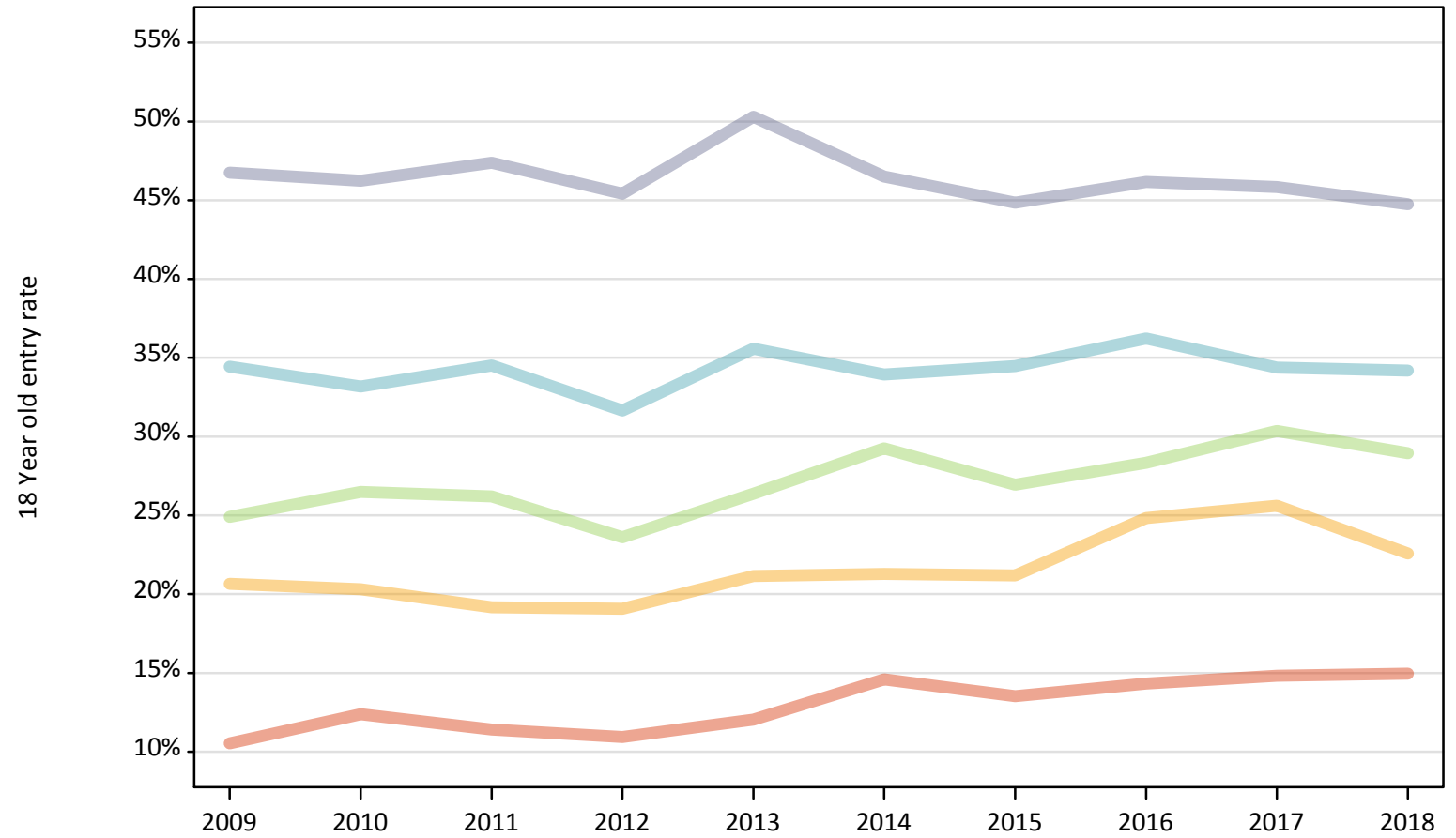
Applicant Status	POLAR4	2009	2010	2011	2012	2013	2014	2015	2016	2017	2018
Placed	Quintile 1	-26%	-15%	-23%	-26%	-20%	-3%	-8%	-4%	0%	-3%
	Quintile 2	-14%	-17%	-24%	-23%	-17%	-17%	-15%	-2%	0%	-16%
	Quintile 3	-17%	-12%	-14%	-22%	-14%	-5%	-10%	-6%	0%	-9%
	Quintile 4	8%	2%	5%	-3%	6%	0%	4%	7%	0%	-5%
	Quintile 5	17%	12%	11%	7%	14%	4%	2%	3%	0%	-6%

Note: The percentage change is not recorded in the above table for groups with fewer than 10 placed applicants in that cycle or in the 2017 cycle.

P.10 Placed 18 year old applicants from Northern Ireland by POLAR4 quintile: 4 days after A level results day

Placed 18 year old applicants: entry rate

- Quintile 1
- Quintile 2
- Quintile 3
- Quintile 4
- Quintile 5



P.11 Placed 18 year old applicants from Northern Ireland by POLAR4 quintile: 4 days after A level results day

Placed 18 year old applicants: entry rate

Applicant Status	POLAR4	2009	2010	2011	2012	2013	2014	2015	2016	2017	2018
Placed	Quintile 1	10.5%	12.4%	11.4%	10.9%	12.0%	14.6%	13.5%	14.3%	14.8%	15.0%
	Quintile 2	20.7%	20.3%	19.2%	19.1%	21.2%	21.3%	21.2%	24.8%	25.6%	22.6%
	Quintile 3	24.9%	26.5%	26.2%	23.6%	26.4%	29.2%	26.9%	28.3%	30.4%	28.9%
	Quintile 4	34.4%	33.2%	34.5%	31.7%	35.6%	33.9%	34.5%	36.2%	34.4%	34.2%
	Quintile 5	46.8%	46.2%	47.4%	45.4%	50.3%	46.5%	44.8%	46.2%	45.8%	44.8%

P.12 Placed 18 year old applicants from Northern Ireland by POLAR4 quintile: 4 days after A level results day

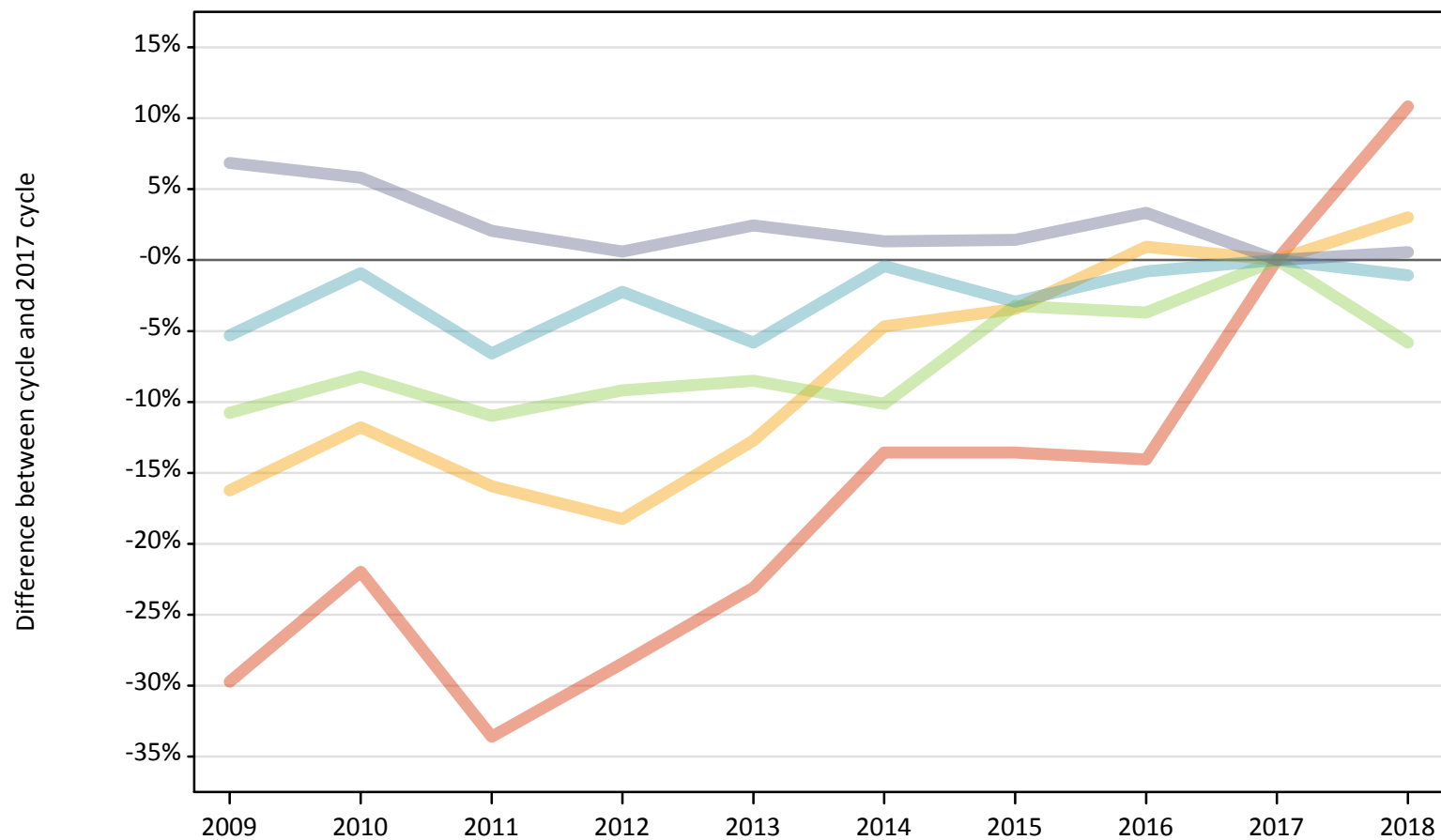
Placed 18 year old applicants: entry rate (indexed to 100 = Quintile 1)

Applicant Status	POLAR4	2009	2010	2011	2012	2013	2014	2015	2016	2017	2018
Placed	Quintile 1	100	100	100	100	100	100	100	100	100	100
	Quintile 2	196	164	168	174	176	146	157	173	173	151
	Quintile 3	237	214	230	216	219	200	199	198	205	194
	Quintile 4	327	268	303	289	296	232	255	253	232	229
	Quintile 5	444	374	415	415	418	318	332	322	309	299

P.13 Placed 18 year old applicants from Scotland by POLAR4 quintile: 4 days after A level results day

Placed 18 year old applicants: change relative to 2017 cycle totals

- Quintile 1
- Quintile 2
- Quintile 3
- Quintile 4
- Quintile 5



Note: The percentage change is not plotted in the above chart for groups with fewer than 30 placed applicants in any one cycle.

P.14 Placed 18 year old applicants from Scotland by POLAR4 quintile: 4 days after A level results day

Applicant Status	POLAR4	2009	2010	2011	2012	2013	2014	2015	2016	2017	2018
Placed	Quintile 1	440	480	410	440	480	540	540	530	620	690
	Quintile 2	1,170	1,230	1,170	1,140	1,220	1,330	1,340	1,410	1,390	1,430
	Quintile 3	2,120	2,180	2,120	2,160	2,170	2,140	2,300	2,290	2,380	2,240
	Quintile 4	3,190	3,340	3,150	3,300	3,170	3,360	3,270	3,340	3,370	3,330
	Quintile 5	7,190	7,120	6,870	6,770	6,900	6,820	6,830	6,960	6,730	6,770

P.15 Placed 18 year old applicants from Scotland by POLAR4 quintile: 4 days after A level results day

Placed 18 year old applicants: change relative to 2017 cycle totals

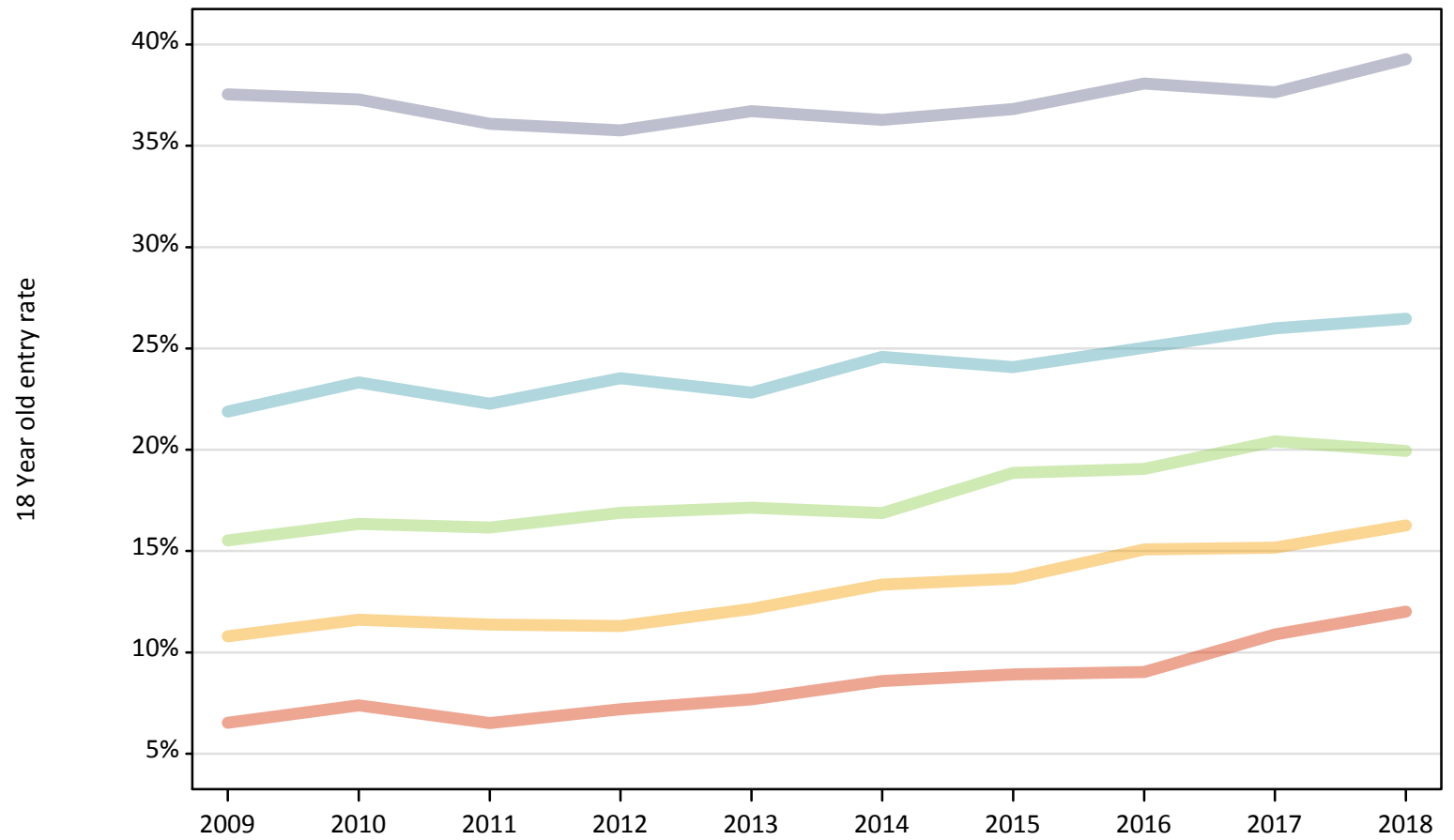
Applicant Status	POLAR4	2009	2010	2011	2012	2013	2014	2015	2016	2017	2018
Placed	Quintile 1	-30%	-22%	-34%	-28%	-23%	-14%	-14%	-14%	0%	11%
	Quintile 2	-16%	-12%	-16%	-18%	-13%	-5%	-3%	1%	0%	3%
	Quintile 3	-11%	-8%	-11%	-9%	-9%	-10%	-3%	-4%	0%	-6%
	Quintile 4	-5%	-1%	-7%	-2%	-6%	-0%	-3%	-1%	0%	-1%
	Quintile 5	7%	6%	2%	1%	2%	1%	1%	3%	0%	1%

Note: The percentage change is not recorded in the above table for groups with fewer than 10 placed applicants in that cycle or in the 2017 cycle.

P.16 Placed 18 year old applicants from Scotland by POLAR4 quintile: 4 days after A level results day

Placed 18 year old applicants: entry rate

- Quintile 1
- Quintile 2
- Quintile 3
- Quintile 4
- Quintile 5



P.17 Placed 18 year old applicants from Scotland by POLAR4 quintile: 4 days after A level results day

Placed 18 year old applicants: entry rate

Applicant Status	POLAR4	2009	2010	2011	2012	2013	2014	2015	2016	2017	2018
Placed	Quintile 1	6.5%	7.4%	6.5%	7.2%	7.7%	8.6%	8.9%	9.0%	10.9%	12.0%
	Quintile 2	10.8%	11.6%	11.4%	11.3%	12.1%	13.3%	13.6%	15.1%	15.2%	16.3%
	Quintile 3	15.5%	16.3%	16.2%	16.9%	17.1%	16.9%	18.9%	19.0%	20.4%	20.0%
	Quintile 4	21.9%	23.3%	22.3%	23.5%	22.8%	24.6%	24.1%	25.0%	26.0%	26.5%
	Quintile 5	37.5%	37.3%	36.1%	35.8%	36.7%	36.3%	36.8%	38.1%	37.7%	39.3%

P.18 Placed 18 year old applicants from Scotland by POLAR4 quintile: 4 days after A level results day

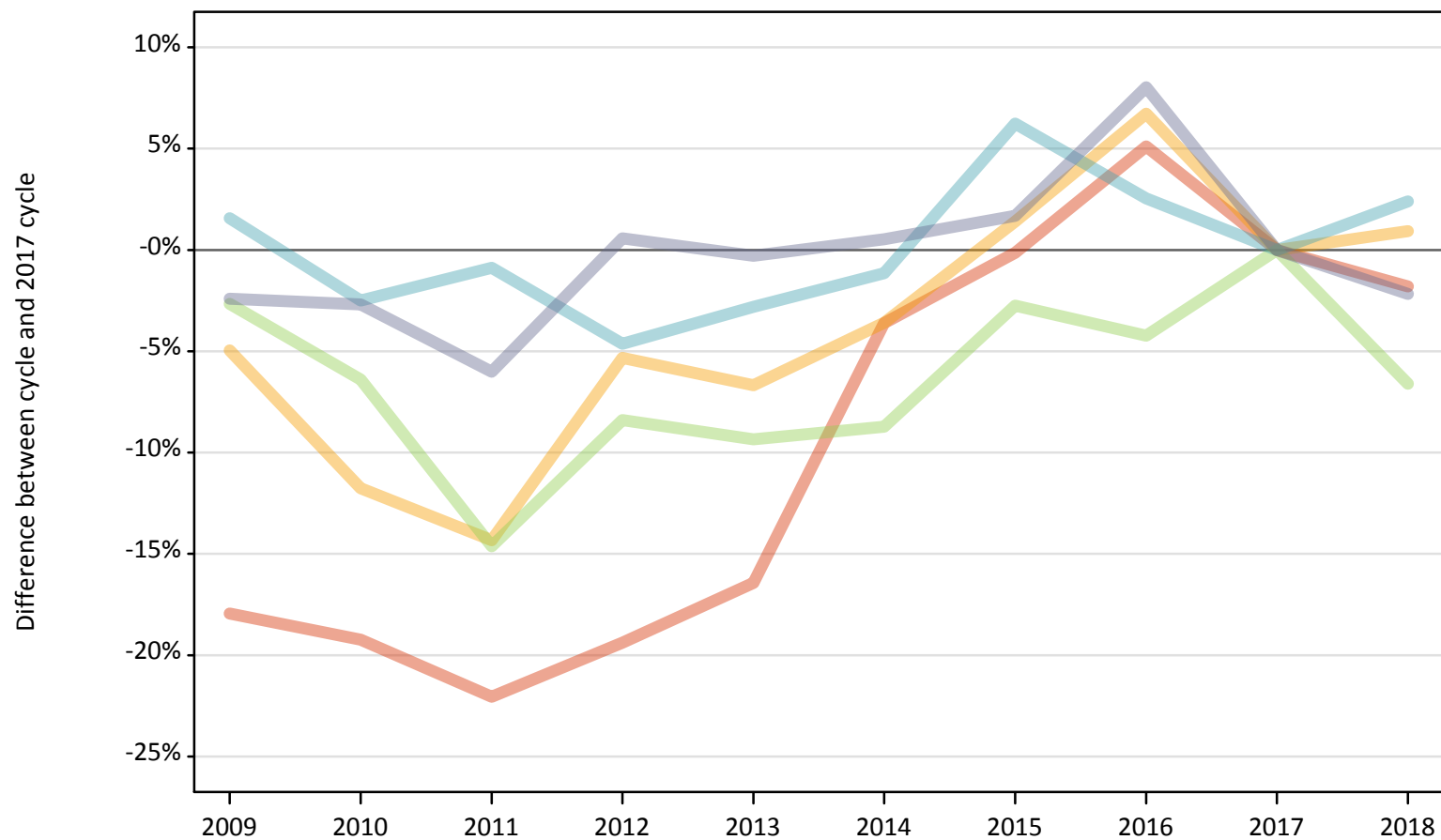
Placed 18 year old applicants: entry rate (indexed to 100 = Quintile 1)

Applicant Status	POLAR4	2009	2010	2011	2012	2013	2014	2015	2016	2017	2018
Placed	Quintile 1	100	100	100	100	100	100	100	100	100	100
	Quintile 2	166	157	174	157	158	155	153	167	139	135
	Quintile 3	238	221	248	235	223	196	211	211	188	166
	Quintile 4	336	316	342	327	297	286	270	277	239	220
	Quintile 5	576	505	554	497	478	422	413	422	346	327

P.19 Placed 18 year old applicants from Wales by POLAR4 quintile: 4 days after A level results day

Placed 18 year old applicants: change relative to 2017 cycle totals

- Quintile 1
- Quintile 2
- Quintile 3
- Quintile 4
- Quintile 5



Note: The percentage change is not plotted in the above chart for groups with fewer than 30 placed applicants in any one cycle.

P.20 Placed 18 year old applicants from Wales by POLAR4 quintile: 4 days after A level results day

Applicant Status	POLAR4	2009	2010	2011	2012	2013	2014	2015	2016	2017	2018
Placed	Quintile 1	1,140	1,120	1,080	1,120	1,160	1,340	1,390	1,460	1,390	1,360
	Quintile 2	2,040	1,890	1,840	2,030	2,000	2,070	2,170	2,290	2,140	2,160
	Quintile 3	2,340	2,250	2,060	2,210	2,180	2,200	2,340	2,310	2,410	2,250
	Quintile 4	1,950	1,880	1,910	1,830	1,870	1,900	2,040	1,970	1,920	1,970
	Quintile 5	2,030	2,030	1,960	2,090	2,080	2,090	2,120	2,250	2,080	2,040

P.21 Placed 18 year old applicants from Wales by POLAR4 quintile: 4 days after A level results day

Placed 18 year old applicants: change relative to 2017 cycle totals

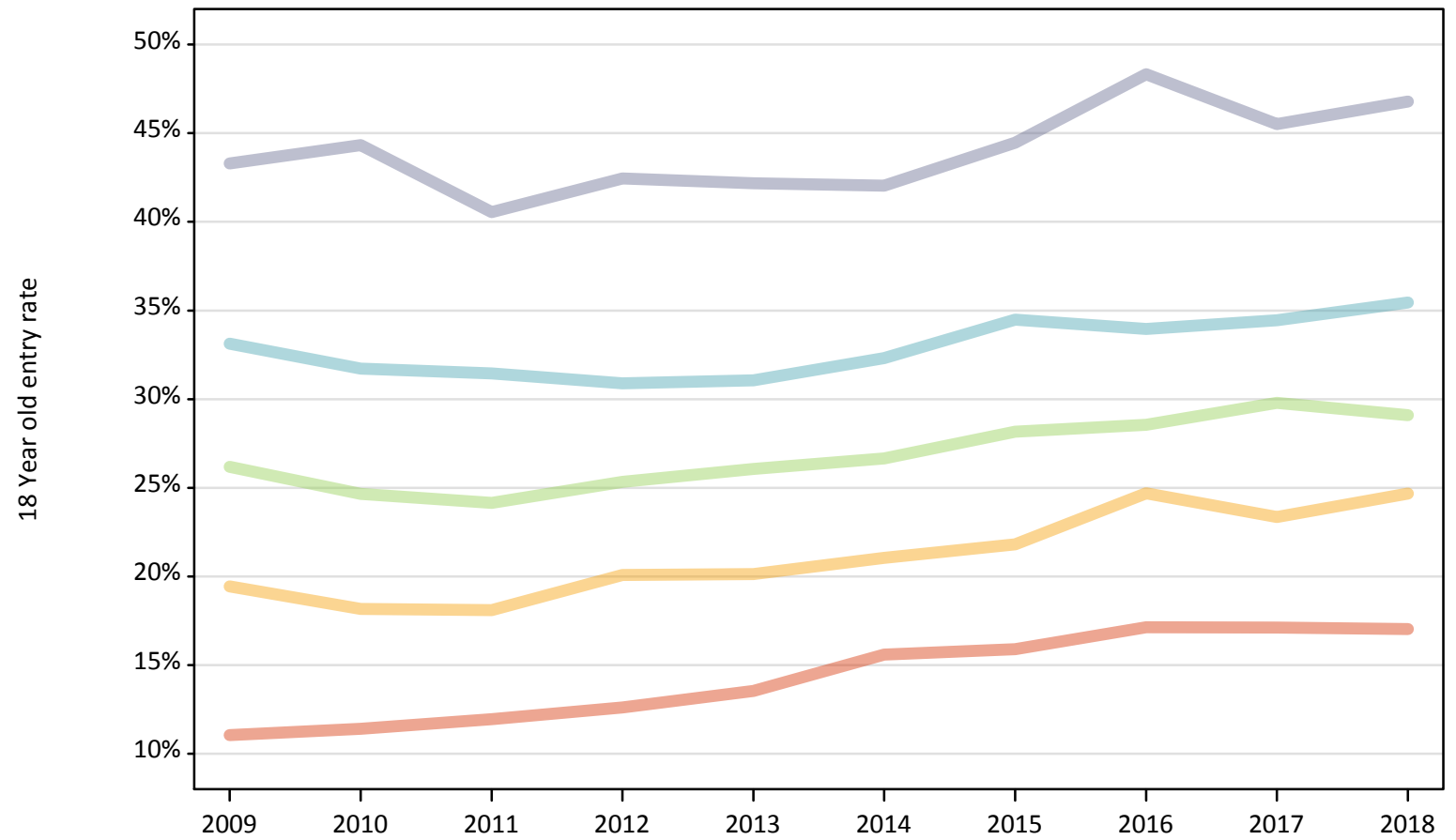
Applicant Status	POLAR4	2009	2010	2011	2012	2013	2014	2015	2016	2017	2018
Placed	Quintile 1	-18%	-19%	-22%	-19%	-16%	-4%	-0%	5%	0%	-2%
	Quintile 2	-5%	-12%	-14%	-5%	-7%	-4%	1%	7%	0%	1%
	Quintile 3	-3%	-6%	-15%	-8%	-9%	-9%	-3%	-4%	0%	-7%
	Quintile 4	2%	-2%	-1%	-5%	-3%	-1%	6%	3%	0%	2%
	Quintile 5	-2%	-3%	-6%	1%	-0%	1%	2%	8%	0%	-2%

Note: The percentage change is not recorded in the above table for groups with fewer than 10 placed applicants in that cycle or in the 2017 cycle.

P.22 Placed 18 year old applicants from Wales by POLAR4 quintile: 4 days after A level results day

Placed 18 year old applicants: entry rate

- Quintile 1
- Quintile 2
- Quintile 3
- Quintile 4
- Quintile 5



P.23 Placed 18 year old applicants from Wales by POLAR4 quintile: 4 days after A level results day

Placed 18 year old applicants: entry rate

Applicant Status	POLAR4	2009	2010	2011	2012	2013	2014	2015	2016	2017	2018
Placed	Quintile 1	11.1%	11.4%	11.9%	12.6%	13.5%	15.6%	15.9%	17.1%	17.1%	17.0%
	Quintile 2	19.4%	18.2%	18.1%	20.1%	20.1%	21.1%	21.8%	24.7%	23.3%	24.7%
	Quintile 3	26.2%	24.7%	24.1%	25.3%	26.1%	26.7%	28.2%	28.5%	29.8%	29.1%
	Quintile 4	33.1%	31.7%	31.4%	30.9%	31.1%	32.3%	34.5%	34.0%	34.4%	35.5%
	Quintile 5	43.3%	44.3%	40.6%	42.5%	42.2%	42.0%	44.5%	48.3%	45.5%	46.8%

P.24 Placed 18 year old applicants from Wales by POLAR4 quintile: 4 days after A level results day

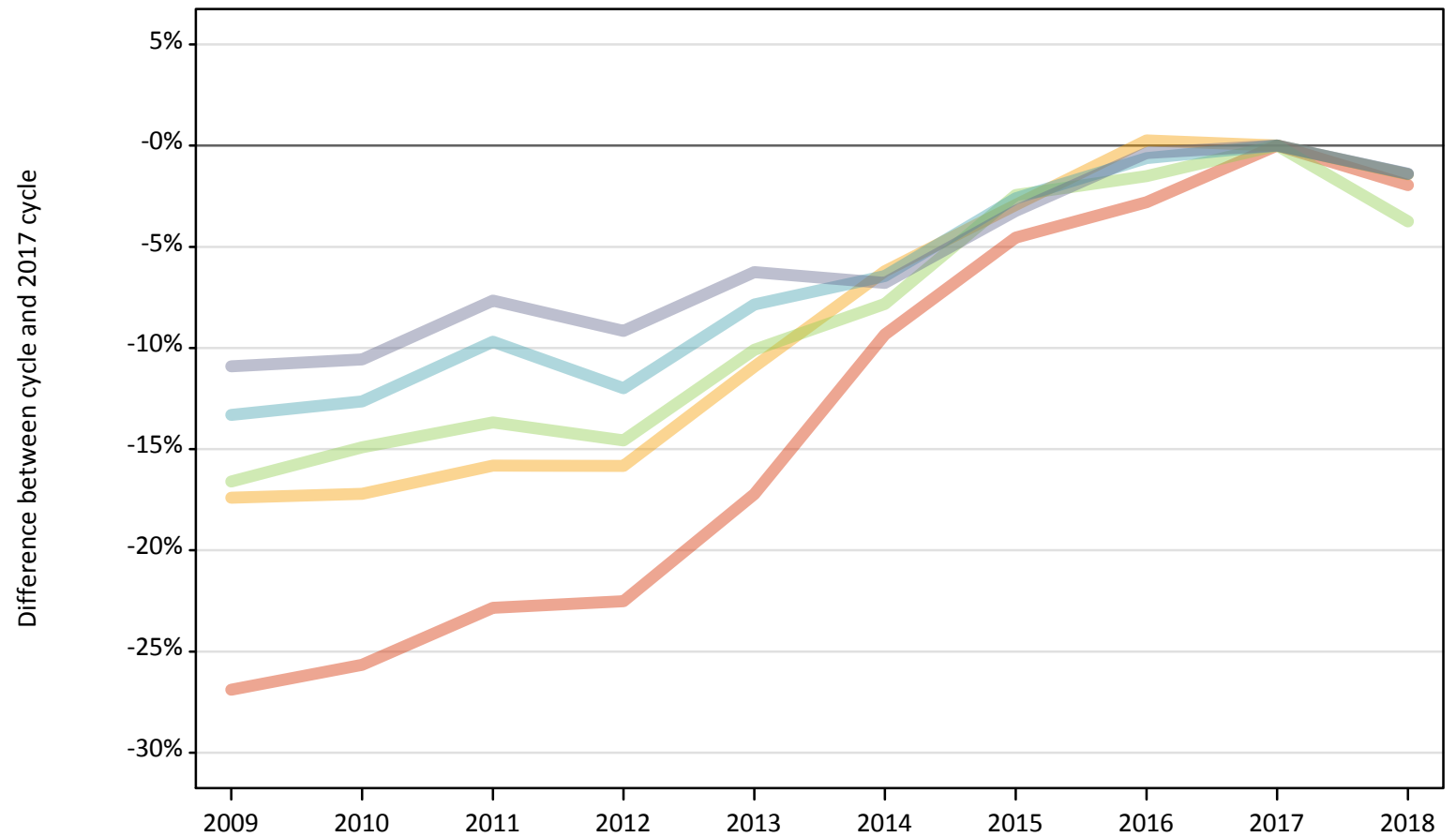
Placed 18 year old applicants: entry rate (indexed to 100 = Quintile 1)

Applicant Status	POLAR4	2009	2010	2011	2012	2013	2014	2015	2016	2017	2018
Placed	Quintile 1	100	100	100	100	100	100	100	100	100	100
	Quintile 2	176	159	151	159	149	135	137	144	136	145
	Quintile 3	237	216	202	201	192	171	177	167	174	171
	Quintile 4	300	278	263	245	229	207	217	198	201	208
	Quintile 5	392	389	339	337	312	270	280	282	266	275

P.25 Placed 18 year old applicants from the UK by POLAR4 quintile: 4 days after A level results day

Placed 18 year old applicants: change relative to 2017 cycle totals

- Quintile 1
- Quintile 2
- Quintile 3
- Quintile 4
- Quintile 5



Note: The percentage change is not plotted in the above chart for groups with fewer than 30 placed applicants in any one cycle.

P.26 Placed 18 year old applicants from the UK by POLAR4 quintile: 4 days after A level results day

Applicant Status	POLAR4	2009	2010	2011	2012	2013	2014	2015	2016	2017	2018
Placed	Quintile 1	17,560	17,860	18,530	18,610	19,880	21,780	22,930	23,350	24,020	23,550
	Quintile 2	27,960	28,030	28,500	28,490	30,160	31,750	32,860	33,940	33,850	33,370
	Quintile 3	35,690	36,410	36,930	36,550	38,470	39,440	41,740	42,140	42,790	41,190
	Quintile 4	45,100	45,450	46,980	45,780	47,940	48,670	50,670	51,700	52,020	51,290
	Quintile 5	67,880	68,150	70,360	69,220	71,430	71,030	73,740	75,920	76,200	75,140

P.27 Placed 18 year old applicants from the UK by POLAR4 quintile: 4 days after A level results day

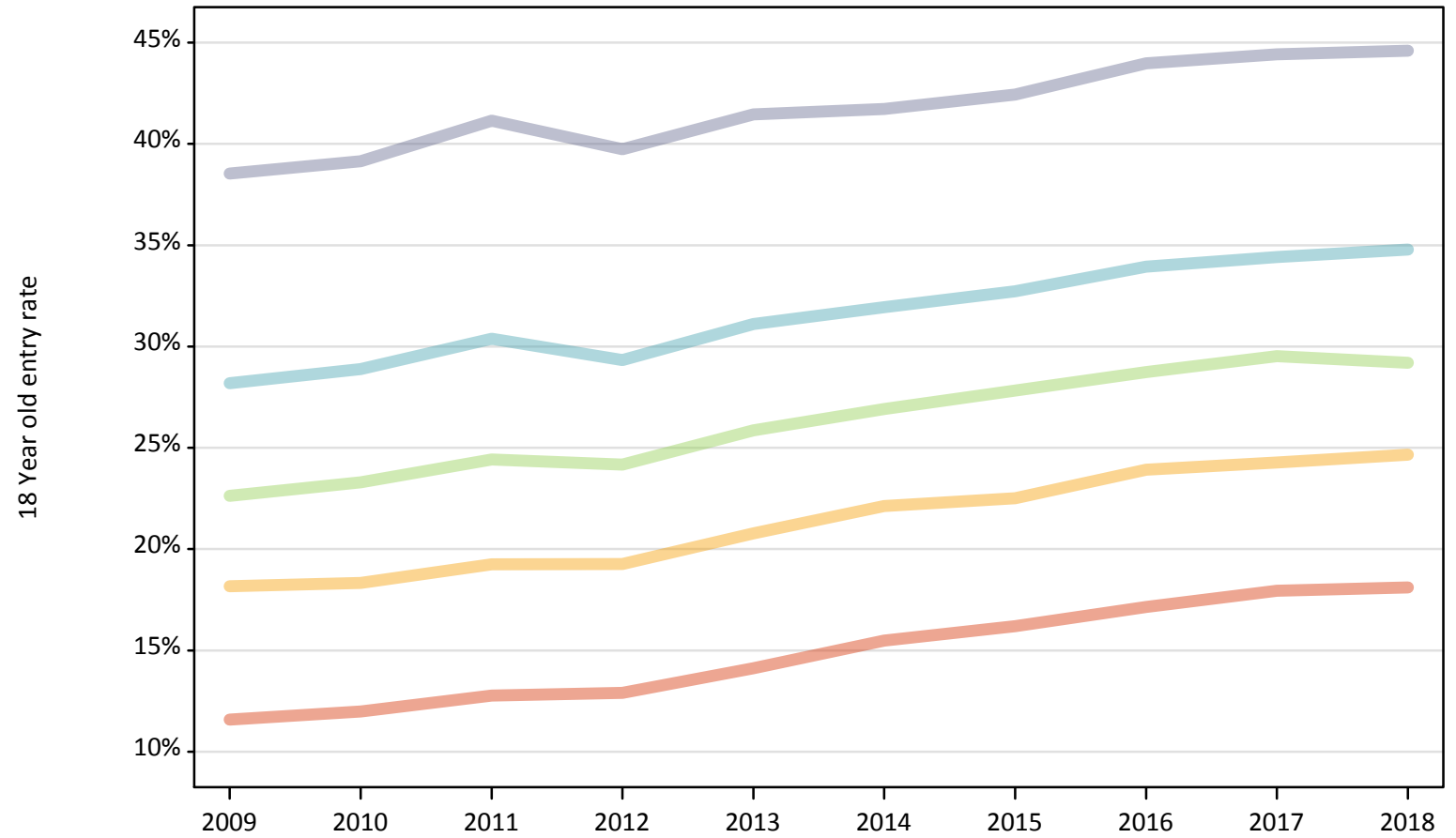
Placed 18 year old applicants: change relative to 2017 cycle totals

Applicant Status	POLAR4	2009	2010	2011	2012	2013	2014	2015	2016	2017	2018
Placed	Quintile 1	-27%	-26%	-23%	-23%	-17%	-9%	-5%	-3%	0%	-2%
	Quintile 2	-17%	-17%	-16%	-16%	-11%	-6%	-3%	0%	0%	-1%
	Quintile 3	-17%	-15%	-14%	-15%	-10%	-8%	-2%	-2%	0%	-4%
	Quintile 4	-13%	-13%	-10%	-12%	-8%	-6%	-3%	-1%	0%	-1%
	Quintile 5	-11%	-11%	-8%	-9%	-6%	-7%	-3%	-0%	0%	-1%

Note: The percentage change is not recorded in the above table for groups with fewer than 10 placed applicants in that cycle or in the 2017 cycle.

P.28 Placed 18 year old applicants from the UK by POLAR4 quintile: 4 days after A level results day
Placed 18 year old applicants: entry rate

- Quintile 1
- Quintile 2
- Quintile 3
- Quintile 4
- Quintile 5



P.29 Placed 18 year old applicants from the UK by POLAR4 quintile: 4 days after A level results day

Placed 18 year old applicants: entry rate

Applicant Status	POLAR4	2009	2010	2011	2012	2013	2014	2015	2016	2017	2018
Placed	Quintile 1	11.6%	12.0%	12.8%	12.9%	14.1%	15.5%	16.2%	17.2%	17.9%	18.1%
	Quintile 2	18.2%	18.3%	19.2%	19.3%	20.8%	22.1%	22.5%	23.9%	24.3%	24.7%
	Quintile 3	22.6%	23.3%	24.4%	24.2%	25.9%	26.9%	27.8%	28.7%	29.5%	29.2%
	Quintile 4	28.2%	28.9%	30.4%	29.3%	31.1%	31.9%	32.7%	33.9%	34.4%	34.8%
	Quintile 5	38.5%	39.1%	41.1%	39.7%	41.5%	41.7%	42.4%	44.0%	44.4%	44.6%

P.30 Placed 18 year old applicants from the UK by POLAR4 quintile: 4 days after A level results day

Placed 18 year old applicants: entry rate (indexed to 100 = Quintile 1)

Applicant Status	POLAR4	2009	2010	2011	2012	2013	2014	2015	2016	2017	2018
Placed	Quintile 1	100	100	100	100	100	100	100	100	100	100
	Quintile 2	157	153	151	149	147	143	139	139	135	136
	Quintile 3	195	194	191	187	183	174	172	168	164	161
	Quintile 4	243	241	238	227	220	206	202	198	192	192
	Quintile 5	333	327	322	308	294	269	262	256	247	246