

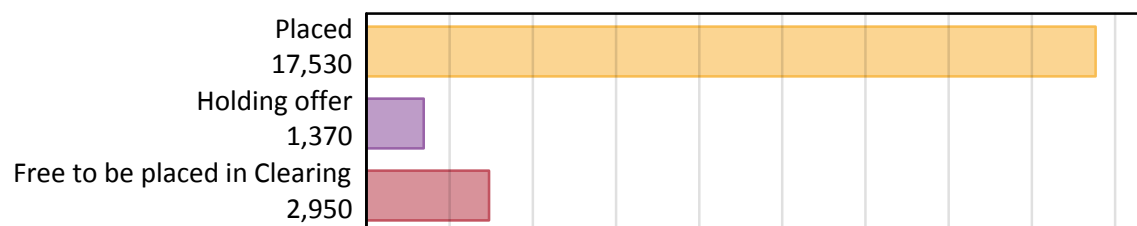
Daily Clearing Analysis: Overview

Analysis at 00:05 on Monday 20 August 2018 (4 days after A level results day)

A.1 Applicants by type and status from Wales, 2018 cycle

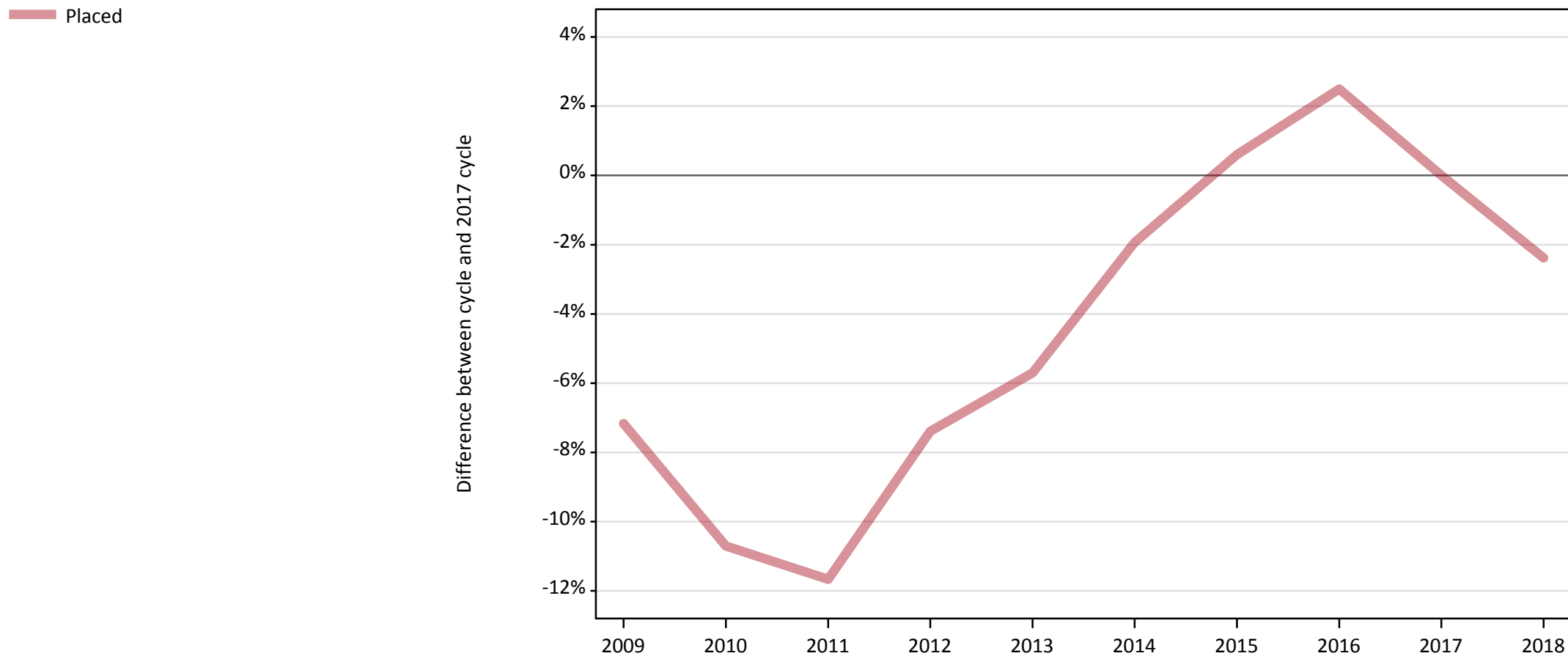
Applicant type	Status	2018
Main scheme	Placed (Clearing)	790
	Placed (Adjustment)	30
	Placed (Firm)	15,160
	Placed (Insurance)	800
	Placed (Other)	470
	Holding offer	1,370
	Free to be placed in Clearing	2,950
Direct to Clearing	Placed (Direct to Clearing)	290
	Other (Direct to Clearing)	300
All applicants	Placed	17,530

A.2 Summary of applicants who are placed, holding offers or free to be placed in Clearing (Wales)



A.3 All placed applicants from Wales: 4 days after A level results day

All placed applicants: difference between cycle and 2017 cycle



Note: The percentage change is not plotted in the above chart for groups with fewer than 30 placed applicants in any one cycle.

A.4 All placed applicants from Wales: 4 days after A level results day

All placed applicants: applicants at 4 days after A level results day

Applicant type	Status	2009	2010	2011	2012	2013	2014	2015	2016	2017	2018
All applicants	Placed	16,670	16,040	15,860	16,630	16,930	17,610	18,070	18,410	17,960	17,530

A.5 All placed applicants from Wales: 4 days after A level results day

All placed applicants: difference between cycle and 2017 cycle

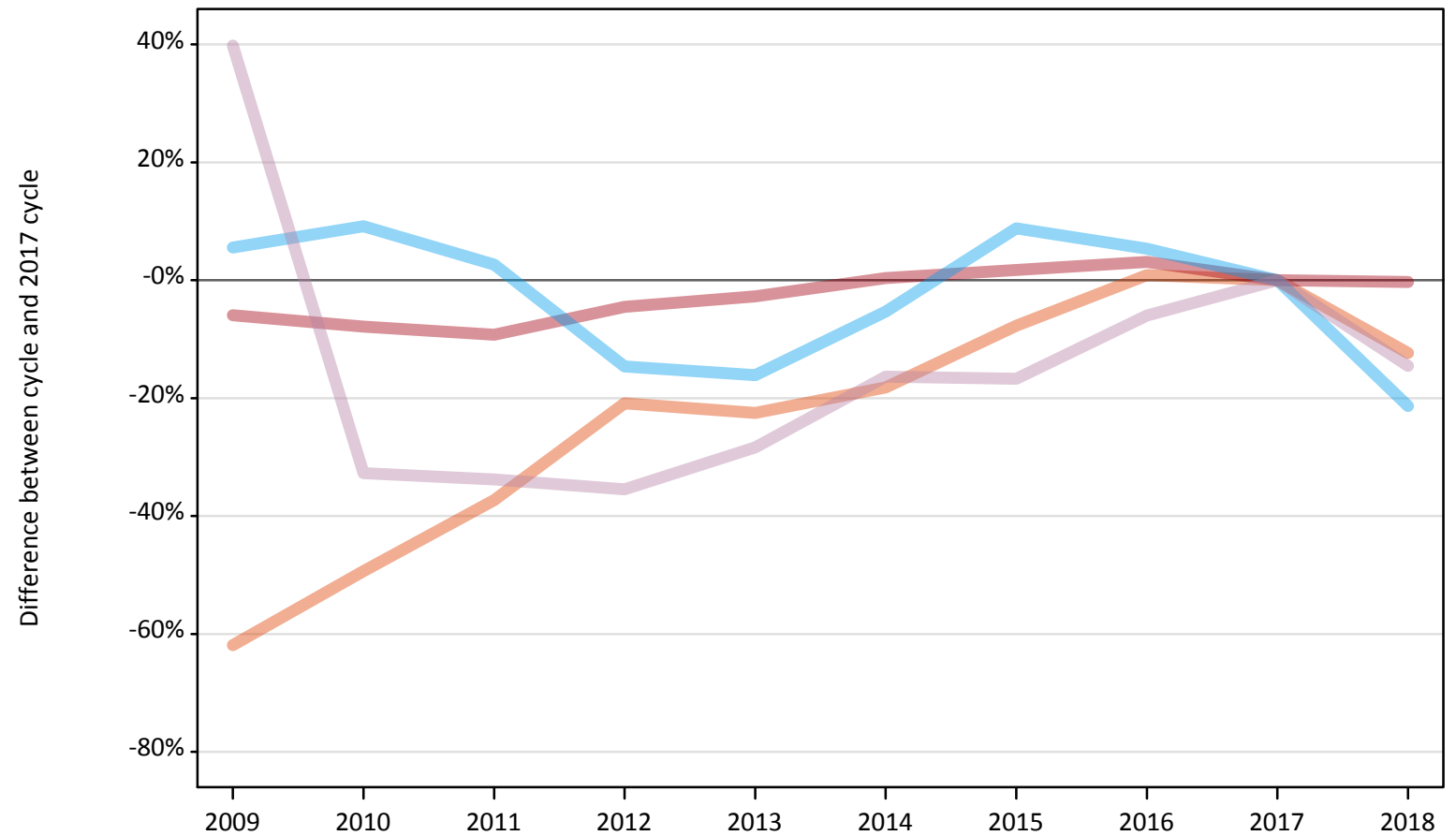
Applicant type	Status	2009	2010	2011	2012	2013	2014	2015	2016	2017	2018
All applicants	Placed	-7%	-11%	-12%	-7%	-6%	-2%	1%	3%	0%	-2%

Note: The percentage change is not recorded in the above table for groups with fewer than 10 placed applicants in that cycle or in the 2017 cycle.

A.6 Placed main scheme applicants from Wales: 4 days after A level results day

All Main scheme placed routes (excluding Adjustment): difference between cycle and 2017 cycle

- Placed (Clearing)
- Placed (Firm)
- Placed (Insurance)
- Placed (Other)



Note: The percentage change is not plotted in the above chart for groups with fewer than 30 placed applicants in any one cycle.

A.7 Placed main scheme applicants from Wales: 4 days after A level results day

All Main scheme placed routes (excluding Adjustment): applicants at 4 days after A level results day

Applicant type	Status	2009	2010	2011	2012	2013	2014	2015	2016	2017	2018
Main scheme	Placed (Clearing)	350	460	570	720	700	740	840	910	910	790
	Placed (Firm)	14,300	14,000	13,790	14,520	14,790	15,260	15,470	15,670	15,200	15,160
	Placed (Insurance)	1,070	1,110	1,040	870	850	960	1,100	1,070	1,010	800
	Placed (Other)	770	370	360	360	390	460	460	520	550	470

A.8 Placed main scheme applicants from Wales: 4 days after A level results day

All Main scheme placed routes (excluding Adjustment): difference between cycle and 2017 cycle

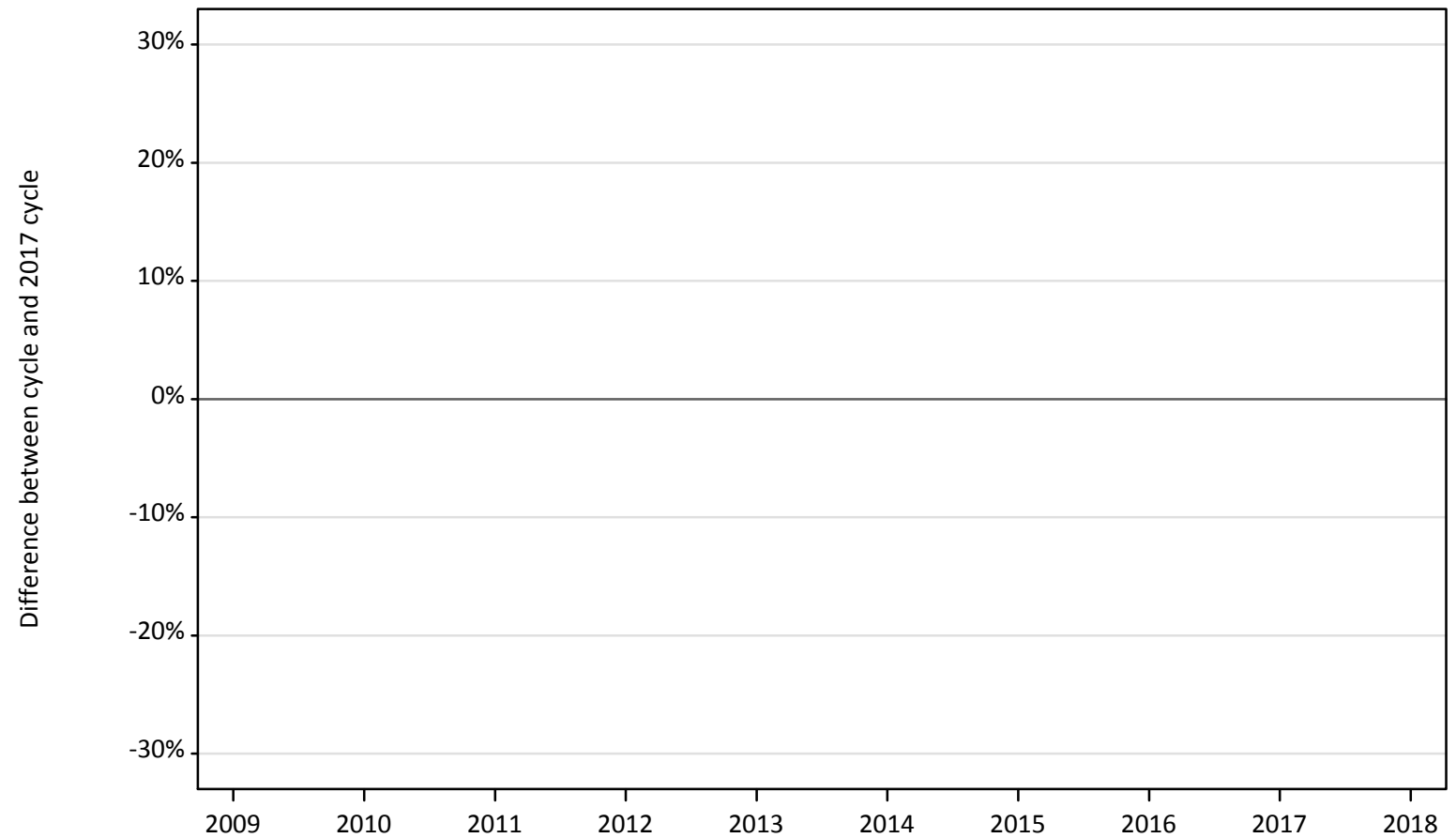
Applicant type	Status	2009	2010	2011	2012	2013	2014	2015	2016	2017	2018
Main scheme	Placed (Clearing)	-62%	-49%	-37%	-21%	-23%	-18%	-8%	1%	0%	-12%
	Placed (Firm)	-6%	-8%	-9%	-5%	-3%	0%	2%	3%	0%	-0%
	Placed (Insurance)	6%	9%	3%	-15%	-16%	-5%	9%	5%	0%	-21%
	Placed (Other)	40%	-33%	-34%	-35%	-28%	-16%	-17%	-6%	0%	-15%

Note: The percentage change is not recorded in the above table for groups with fewer than 10 placed applicants in that cycle or in the 2017 cycle.

A.9 Main scheme applicants placed through adjustment: 4 days after A level results day

Placed through adjustment: difference between cycle and 2017 cycle

Placed (Adjustment)



Note: The percentage change is not plotted in the above chart for groups with fewer than 30 placed applicants in any one cycle.

A.10 Main scheme applicants placed through adjustment: 4 days after A level results day

Placed through adjustment: applicants at 4 days after A level results day

Applicant type	Status	2009	2010	2011	2012	2013	2014	2015	2016	2017	2018
Main scheme	Placed (Adjustment)	10	10	10	10	20	20	20	20	30	30

A.11 Main scheme applicants placed through adjustment: 4 days after A level results day

Placed through adjustment: difference between cycle and 2017 cycle

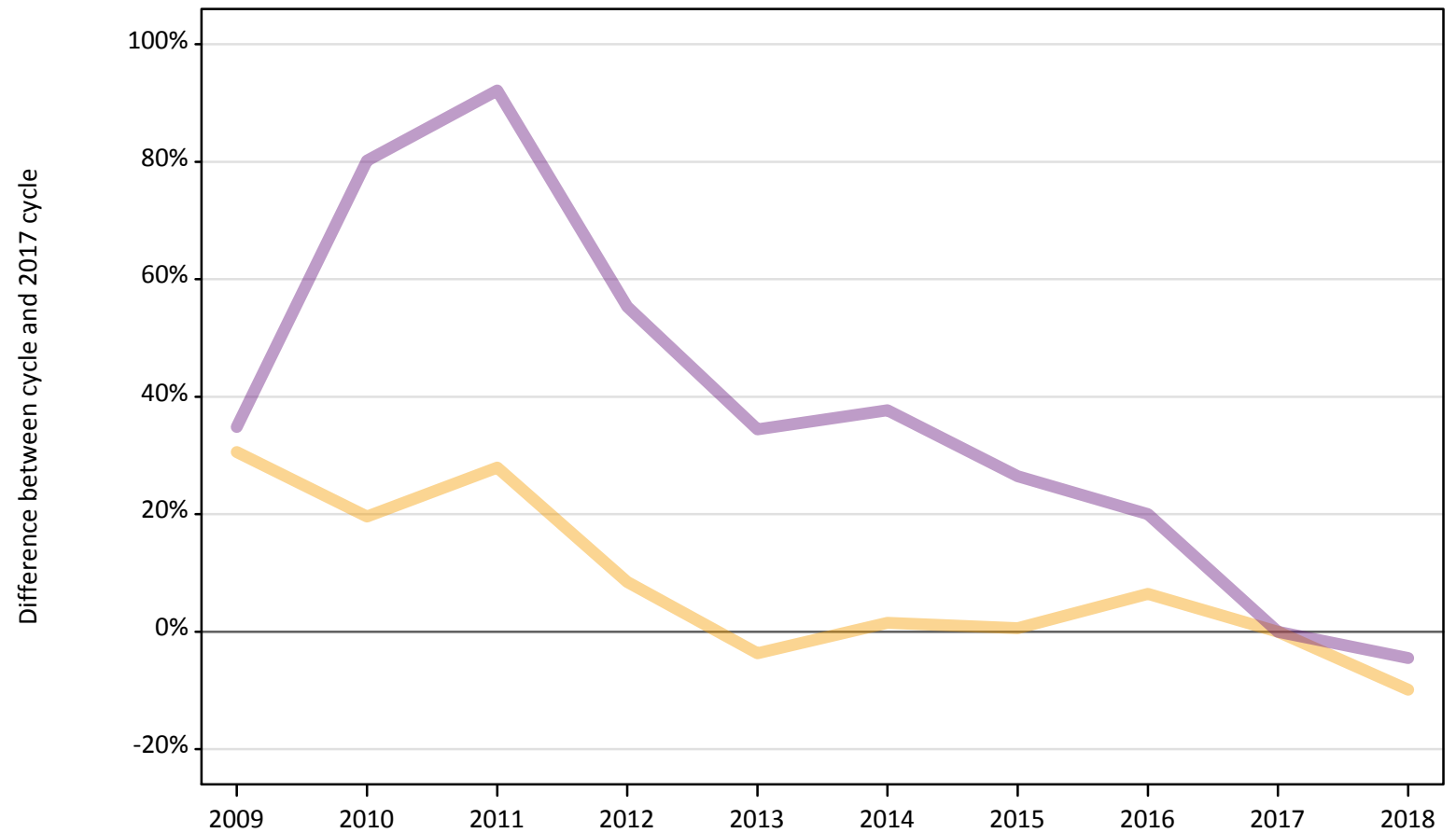
Applicant type	Status	2009	2010	2011	2012	2013	2014	2015	2016	2017	2018
Main scheme	Placed (Adjustment)	-82%	-64%	-75%	-54%	-29%	-32%	-14%	-43%	0%	-4%

Note: The percentage change is not recorded in the above table for groups with fewer than 10 placed applicants in that cycle or in the 2017 cycle.

A.12 Main scheme applicants not currently placed from Wales: 4 days after A level results day

Applicants in unplaced states: difference between cycle and 2017 cycle

— Holding offer
— Free to be placed in Clearing



Note: The percentage change is not plotted in the above chart for groups with fewer than 30 unplaced applicants in any one cycle.

A.13 Main scheme applicants not currently placed from Wales: 4 days after A level results day

Applicants in unplaced states: applicants at 4 days after A level results day

Applicant type	Status	2009	2010	2011	2012	2013	2014	2015	2016	2017	2018
Main scheme	Holding offer	1,990	1,820	1,950	1,650	1,470	1,550	1,530	1,620	1,520	1,370
	Free to be placed in Clearing	4,160	5,560	5,930	4,790	4,150	4,250	3,900	3,700	3,090	2,950

A.14 Main scheme applicants not currently placed from Wales: 4 days after A level results day

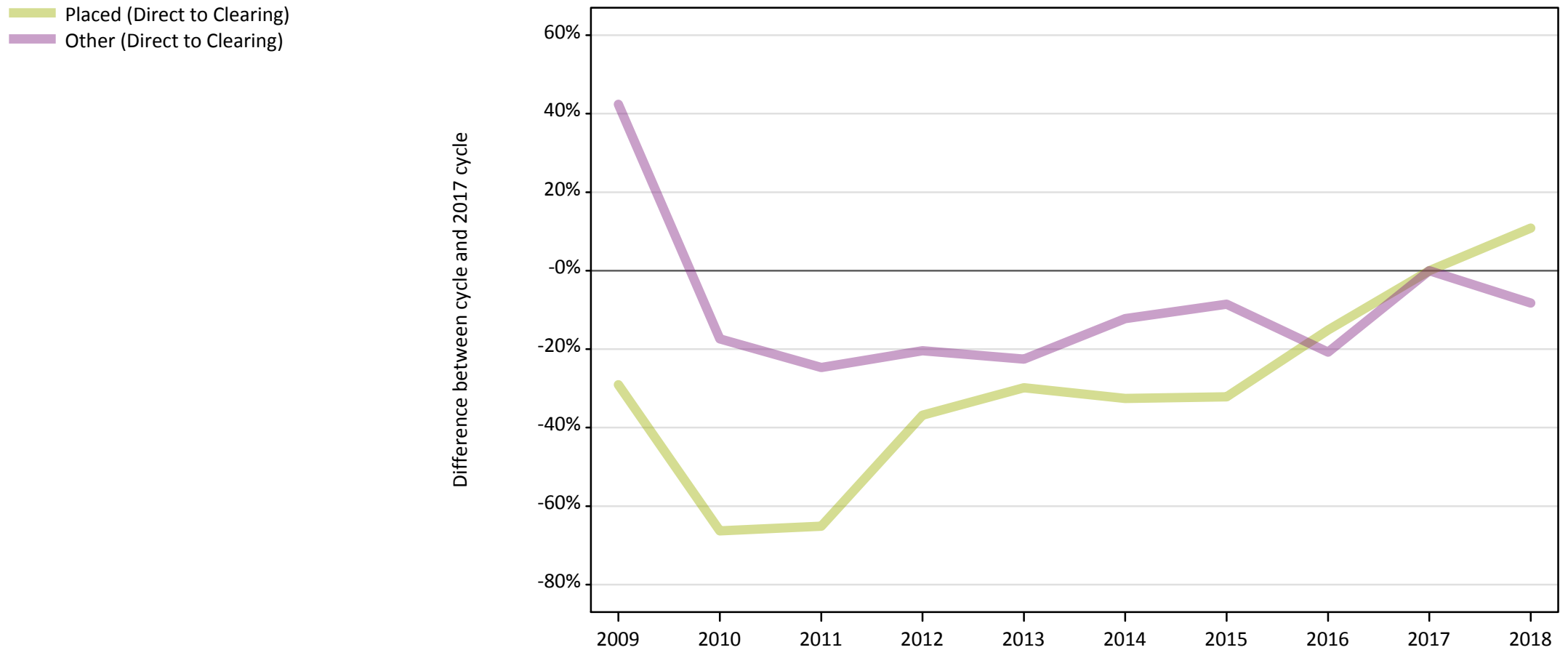
Applicants in unplaced states: difference between cycle and 2017 cycle

Applicant type	Status	2009	2010	2011	2012	2013	2014	2015	2016	2017	2018
Main scheme	Holding offer	31%	20%	28%	8%	-4%	2%	1%	6%	0%	-10%
	Free to be placed in Clearing	35%	80%	92%	55%	34%	38%	26%	20%	0%	-4%

Note: The percentage change is not recorded in the above table for groups with fewer than 10 unplaced applicants in that cycle or in the 2017 cycle.

A.15 Direct to Clearing applicants from Wales: 4 days after A level results day

Direct to Clearing: difference between cycle and 2017 cycle



Note: The percentage change is not plotted in the above chart for groups with fewer than 30 placed applicants in any one cycle.

A.16 Direct to Clearing applicants from Wales: 4 days after A level results day

Direct to Clearing 4 days after A level results day

Applicant type	Status	2009	2010	2011	2012	2013	2014	2015	2016	2017	2018
Direct to Clearing	Placed (Direct to Clearing)	180	90	90	160	180	170	180	220	260	290
	Other (Direct to Clearing)	470	270	250	260	250	290	300	260	330	300

A.17 Direct to Clearing applicants from Wales: 4 days after A level results day

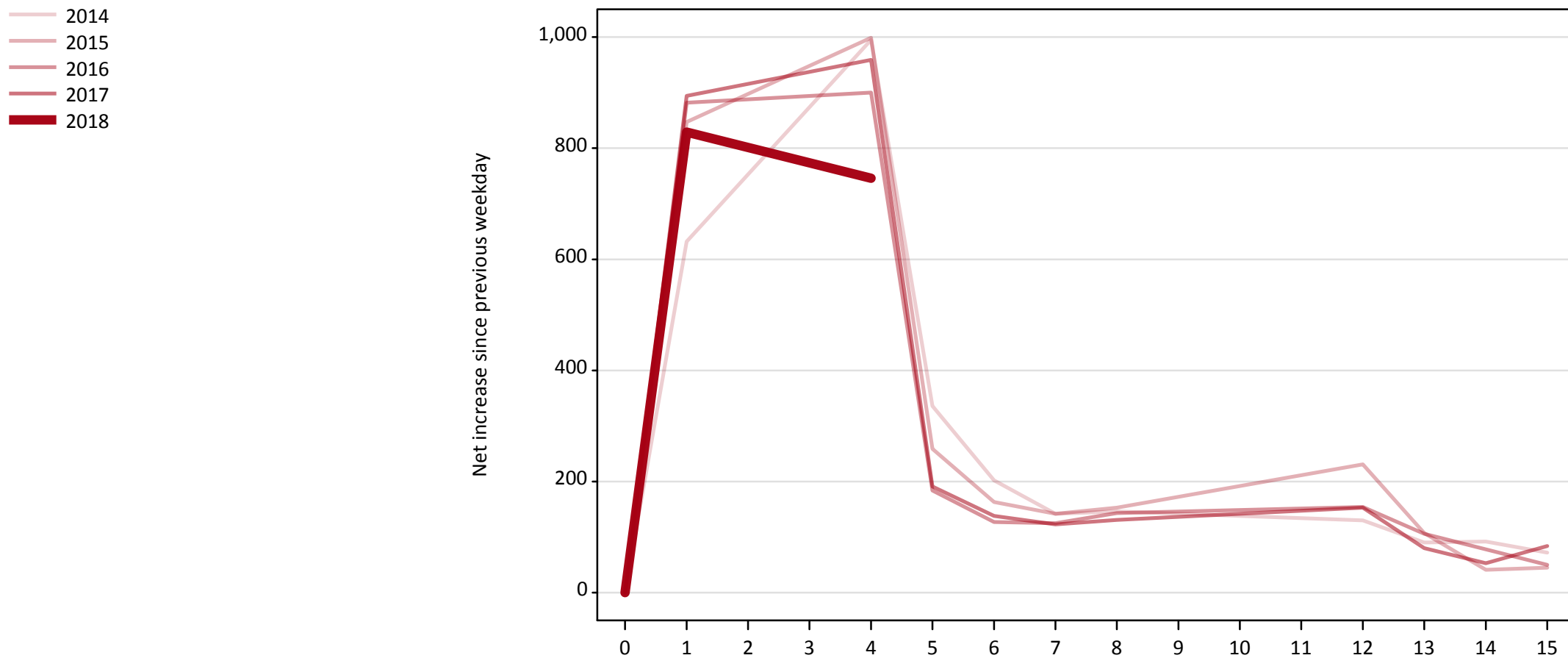
Direct to Clearing: difference between cycle and 2017 cycle

Applicant type	Status	2009	2010	2011	2012	2013	2014	2015	2016	2017	2018
Direct to Clearing	Placed (Direct to Clearing)	-29%	-66%	-65%	-37%	-30%	-33%	-32%	-15%	0%	11%
	Other (Direct to Clearing)	42%	-17%	-25%	-20%	-23%	-12%	-9%	-21%	0%	-8%

Note: The percentage change is not recorded in the above table for groups with fewer than 10 placed applicants in that cycle or in the 2017 cycle.

A.18 All Placed: Daily net change (from Wales)

Net increase since previous weekday (2018 cycle up to 4 days after A level results day)

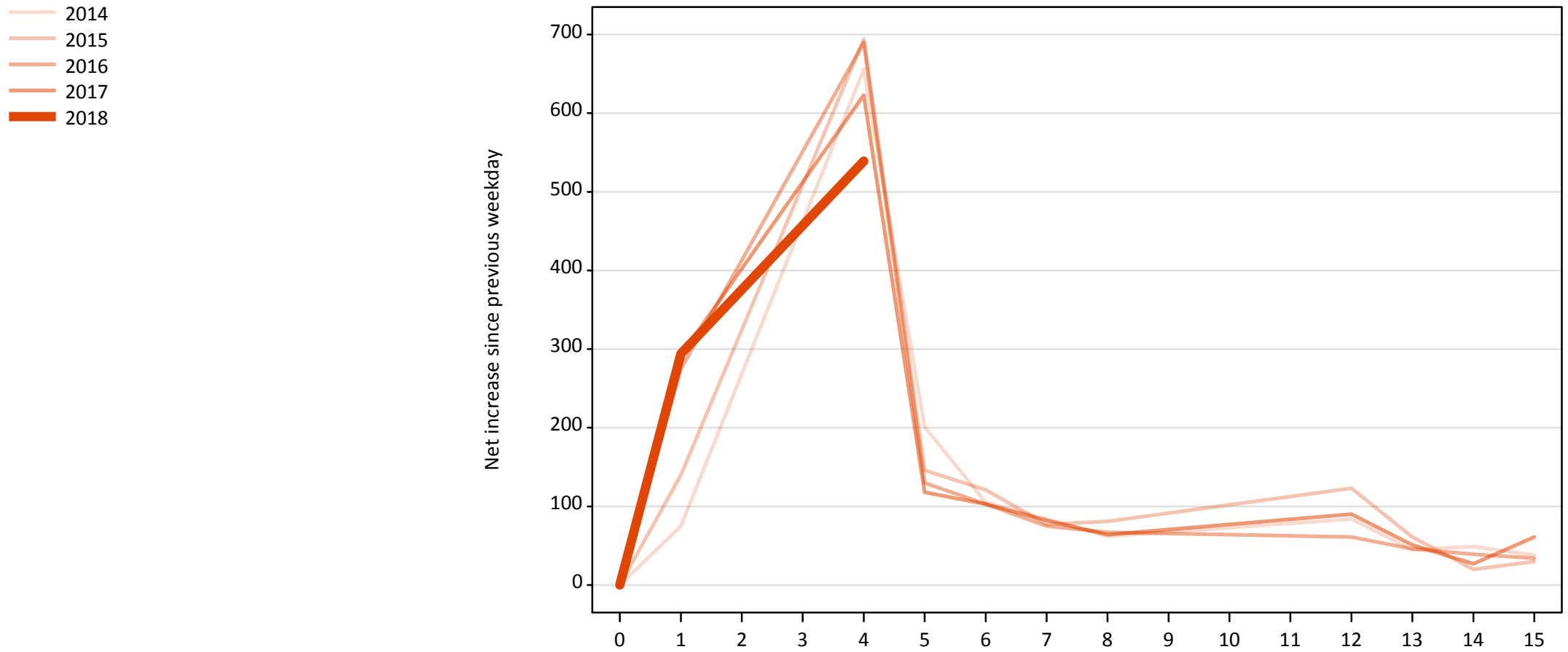


A.19 All Placed: Daily net change (from Wales)

Net increase since previous weekday (2018 cycle up to 4 days after A level results day)

Applicant status, days since A level results day		2014	2015	2016	2017	2018
All Placed	0	0	0	0	0	0
	1	630	850	880	890	830
	4	1,000	1,000	900	960	750
	5	340	260	180	190	
	6	200	160	130	140	
	7	140	140	130	120	
	8	150	150	140	130	
	12	130	230	150	150	
	13	90	110	110	80	
	14	90	40	80	50	
	15	70	50	50	80	

A.20 Placed through Clearing only: Daily net change (from Wales)
Net increase since previous weekday (2018 cycle up to 4 days after A level results day)



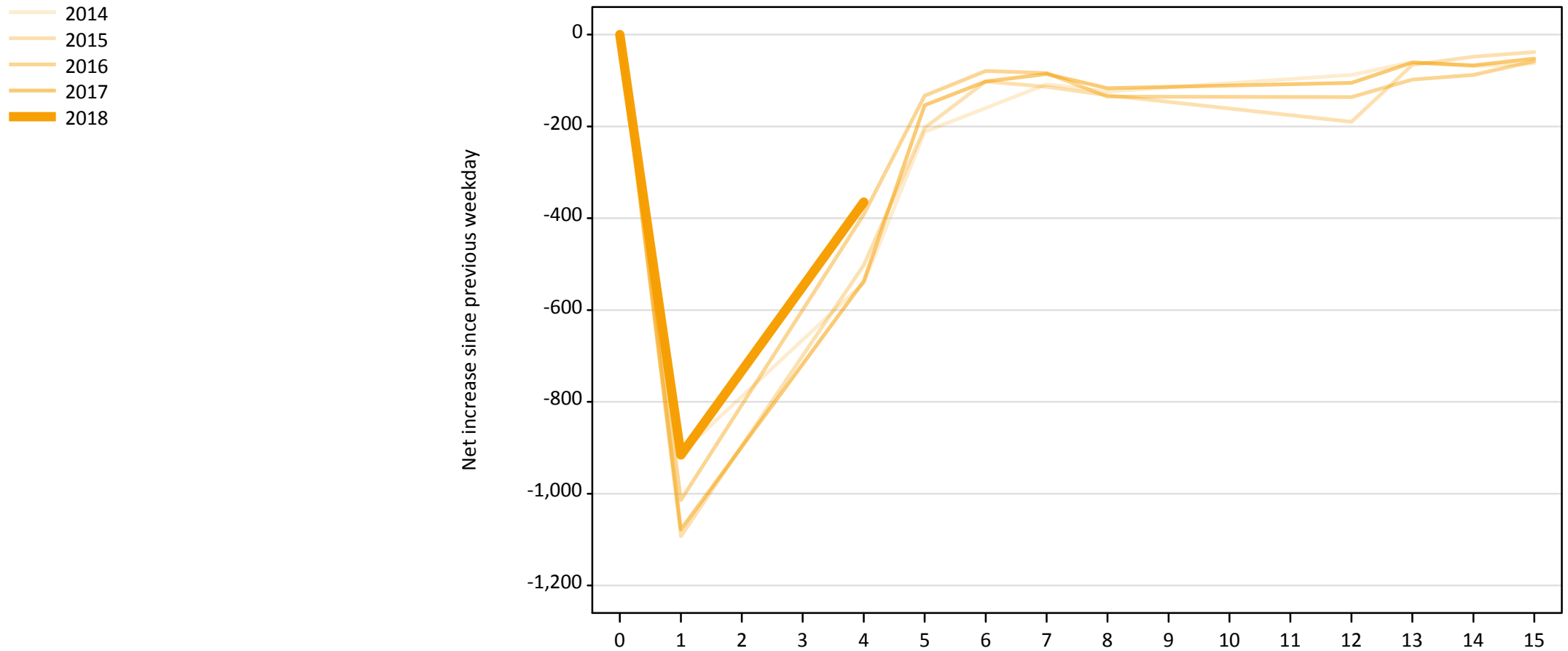
A.21 Placed through Clearing only: Daily net change (from Wales)

Net increase since previous weekday (2018 cycle up to 4 days after A level results day)

Applicant status, days since A level results day		2014	2015	2016	2017	2018
Placed through Clearing only	0	0	0	0	0	0
	1	80	140	280	290	290
	4	660	690	690	620	540
	5	200	150	130	120	
	6	110	120	100	100	
	7	80	80	80	80	
	8	60	80	70	60	
	12	80	120	60	90	
	13	50	60	50	50	
	14	50	20	40	30	
	15	40	30	30	60	

A.22 Holding Offer: Daily net change (from Wales)

Net increase since previous weekday (2018 cycle up to 4 days after A level results day)



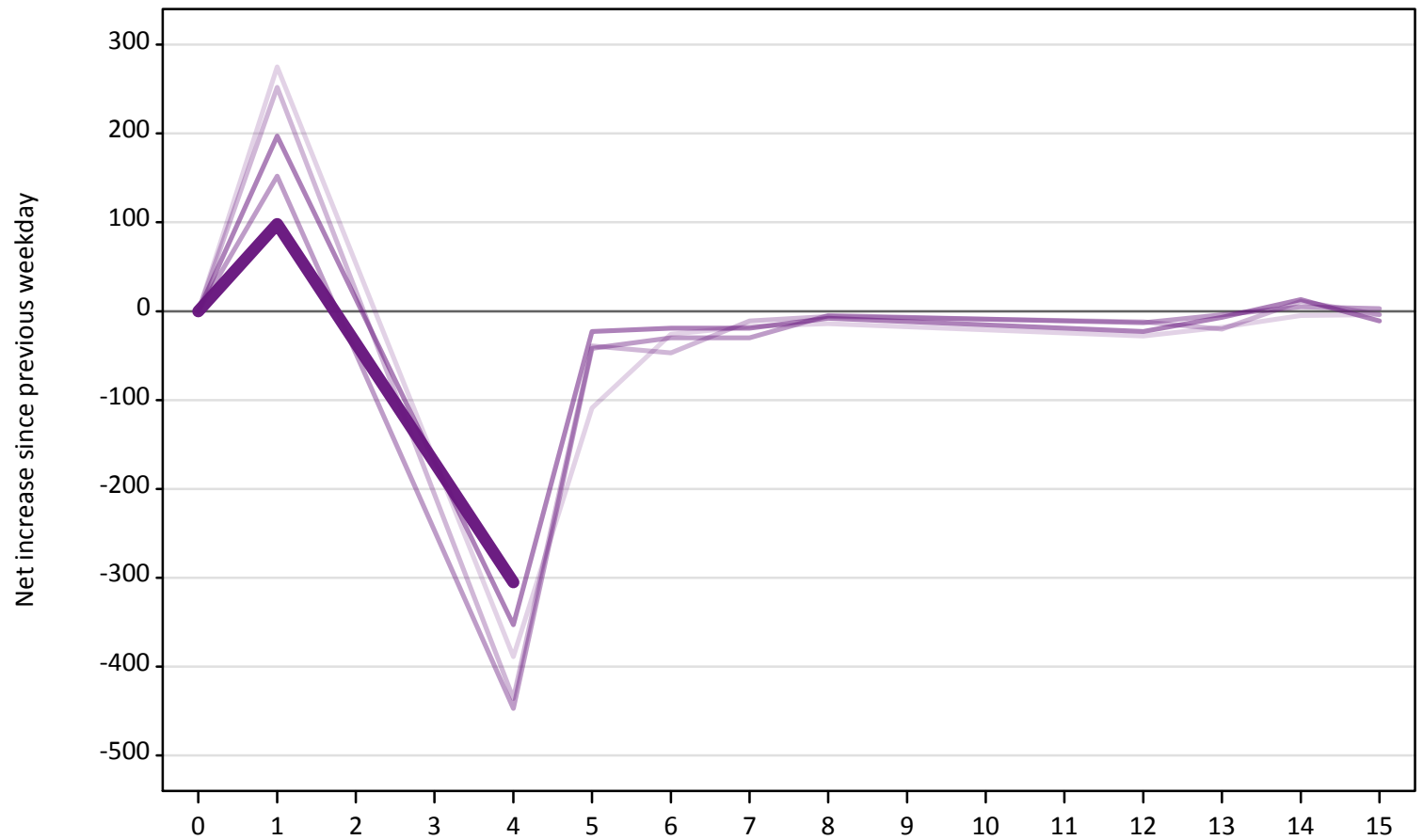
A.23 Holding Offer: Daily net change (from Wales)

Net increase since previous weekday (2018 cycle up to 4 days after A level results day)

Applicant status, days since A level results day		2014	2015	2016	2017	2018
Holding Offer	0	0	0	0	0	0
	1	-910	-1,090	-1,010	-1,080	-920
	4	-540	-500	-390	-540	-370
	5	-210	-200	-130	-150	
	6	-160	-100	-80	-100	
	7	-110	-110	-80	-90	
	8	-120	-130	-140	-120	
	12	-90	-190	-140	-110	
	13	-60	-70	-100	-60	
	14	-70	-50	-90	-70	
	15	-60	-40	-60	-50	

A.24 Free to be placed in Clearing: Daily net change (from Wales)
Net increase since previous weekday (2018 cycle up to 4 days after A level results day)

- 2014
- 2015
- 2016
- 2017
- 2018



A.25 Free to be placed in Clearing: Daily net change (from Wales)

Net increase since previous weekday (2018 cycle up to 4 days after A level results day)

Applicant status, days since A level results day		2014	2015	2016	2017	2018
Free to be placed in Clearing	0	0	0	0	0	0
	1	280	250	150	200	100
	4	-390	-440	-450	-350	-310
	5	-110	-40	-40	-20	
	6	-30	-50	-30	-20	
	7	-20	-10	-30	-20	
	8	-10	-10	-10	-10	
	12	-30	-10	-10	-20	
	13	-20	-20	0	-10	
	14	-10	10	10	10	
	15	0	0	0	-10	