

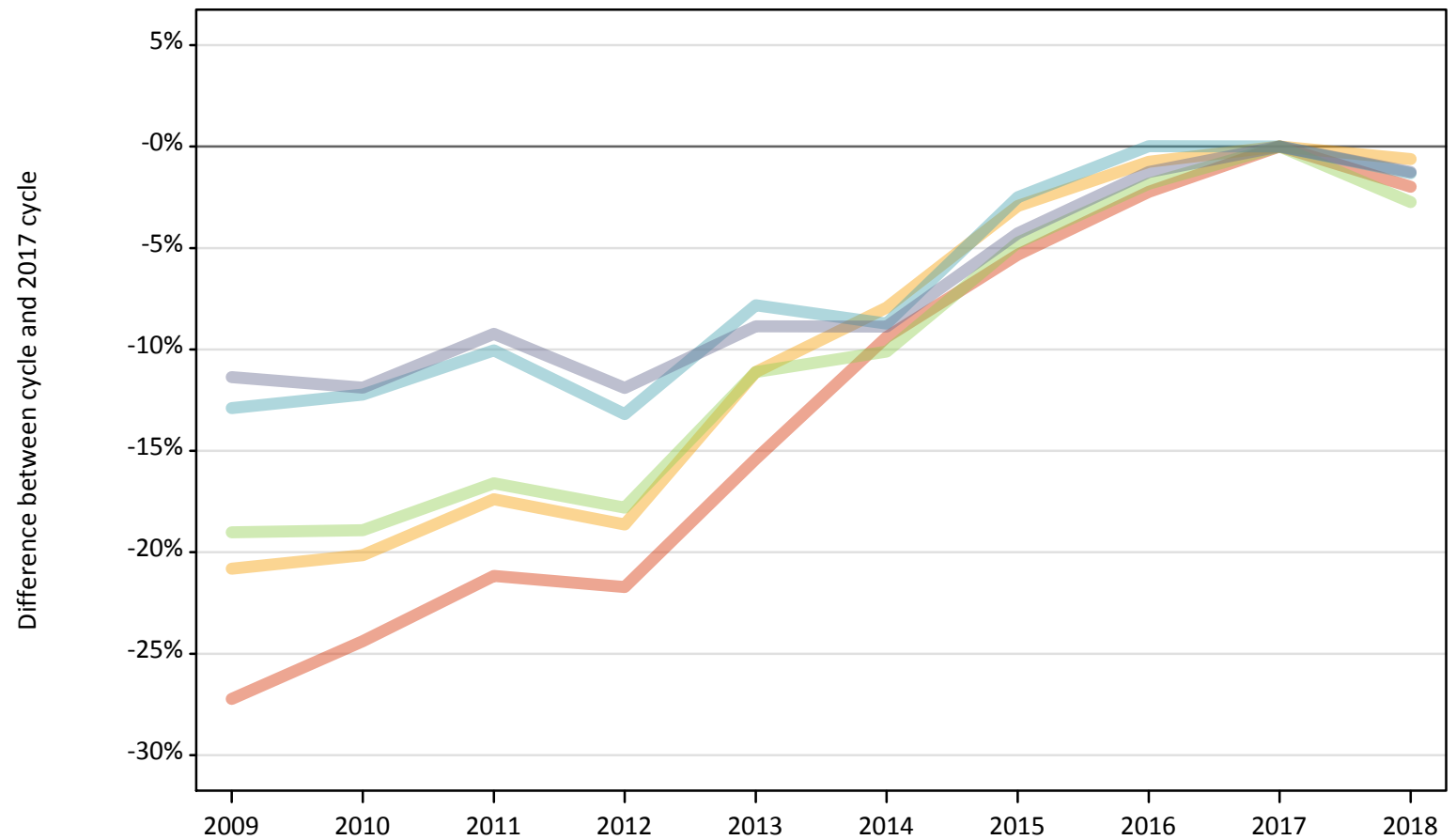
Daily Clearing Analysis: POLAR3

Analysis at 00:05 on Friday 17 August 2018 (1 day after A level results day)

P.1 Placed 18 year old applicants from England by POLAR3 quintile: 1 day after A level results day

Placed 18 year old applicants: change relative to 2017 cycle totals

- Quintile 1
- Quintile 2
- Quintile 3
- Quintile 4
- Quintile 5



Note: The percentage change is not plotted in the above chart for groups with fewer than 30 placed applicants in any one cycle.

P.2 Placed 18 year old applicants from England by POLAR3 quintile: 1 day after A level results day

Applicant Status	POLAR3	2009	2010	2011	2012	2013	2014	2015	2016	2017	2018
Placed	Quintile 1	14,920	15,510	16,170	16,060	17,350	18,580	19,420	20,050	20,510	20,100
	Quintile 2	22,460	22,650	23,430	23,080	25,210	26,110	27,530	28,150	28,360	28,190
	Quintile 3	29,360	29,400	30,240	29,800	32,230	32,590	34,540	35,590	36,250	35,260
	Quintile 4	36,580	36,860	37,770	36,460	38,710	38,320	40,940	42,000	41,990	41,440
	Quintile 5	49,860	49,560	51,060	49,560	51,270	51,260	53,850	55,550	56,250	55,540

P.3 Placed 18 year old applicants from England by POLAR3 quintile: 1 day after A level results day

Placed 18 year old applicants: change relative to 2017 cycle totals

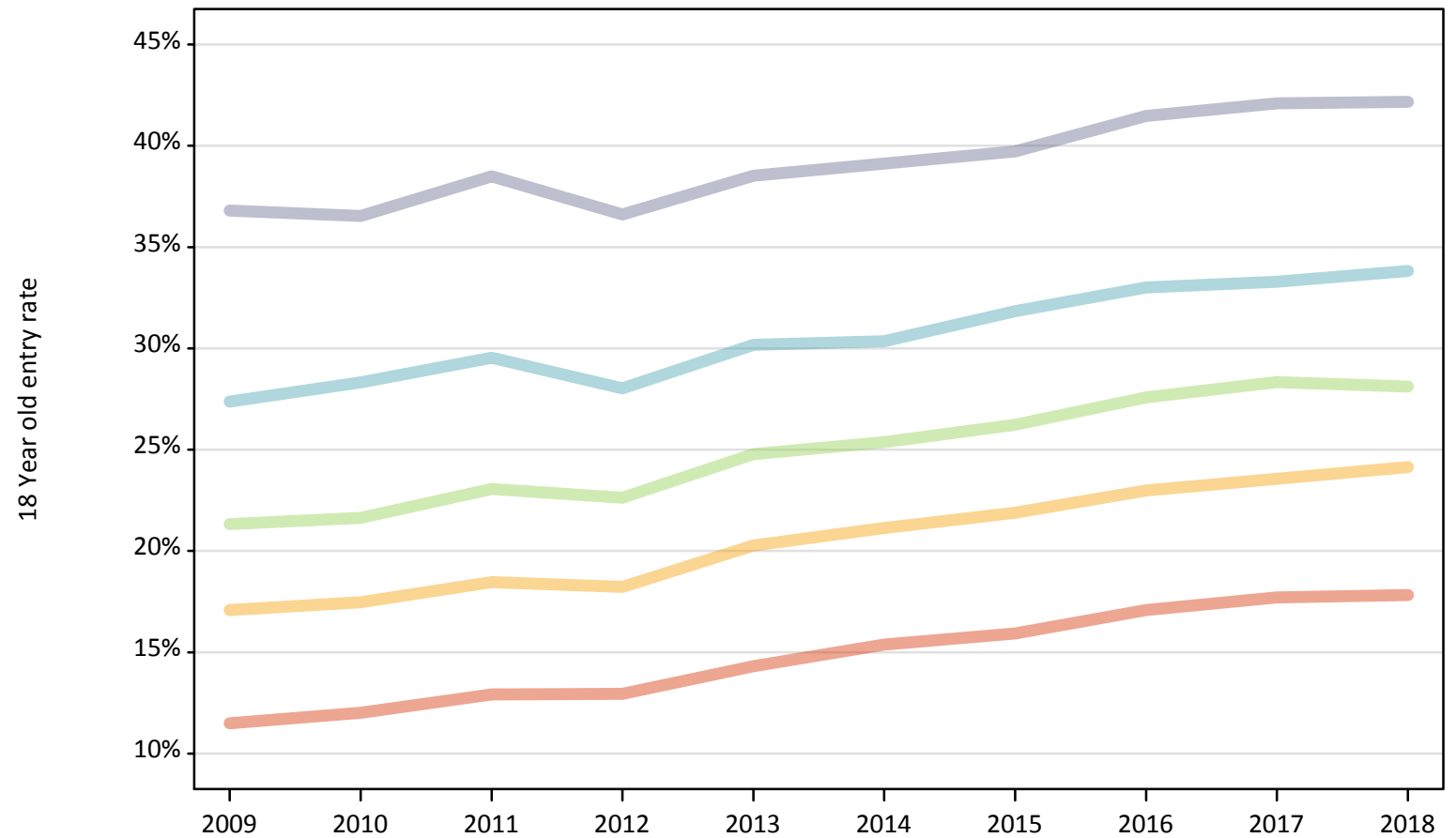
Applicant Status	POLAR3	2009	2010	2011	2012	2013	2014	2015	2016	2017	2018
Placed	Quintile 1	-27%	-24%	-21%	-22%	-15%	-9%	-5%	-2%	0%	-2%
	Quintile 2	-21%	-20%	-17%	-19%	-11%	-8%	-3%	-1%	0%	-1%
	Quintile 3	-19%	-19%	-17%	-18%	-11%	-10%	-5%	-2%	0%	-3%
	Quintile 4	-13%	-12%	-10%	-13%	-8%	-9%	-3%	0%	0%	-1%
	Quintile 5	-11%	-12%	-9%	-12%	-9%	-9%	-4%	-1%	0%	-1%

Note: The percentage change is not recorded in the above table for groups with fewer than 10 placed applicants in that cycle or in the 2017 cycle.

P.4 Placed 18 year old applicants from England by POLAR3 quintile: 1 day after A level results day

Placed 18 year old applicants: entry rate

- Quintile 1
- Quintile 2
- Quintile 3
- Quintile 4
- Quintile 5



P.5 Placed 18 year old applicants from England by POLAR3 quintile: 1 day after A level results day

Placed 18 year old applicants: entry rate

Applicant Status	POLAR3	2009	2010	2011	2012	2013	2014	2015	2016	2017	2018
Placed	Quintile 1	11.5%	12.0%	12.9%	12.9%	14.3%	15.4%	15.9%	17.1%	17.7%	17.8%
	Quintile 2	17.1%	17.5%	18.5%	18.2%	20.3%	21.1%	21.9%	23.0%	23.6%	24.1%
	Quintile 3	21.3%	21.6%	23.1%	22.6%	24.8%	25.4%	26.2%	27.6%	28.3%	28.1%
	Quintile 4	27.4%	28.3%	29.5%	28.0%	30.2%	30.3%	31.8%	33.0%	33.3%	33.8%
	Quintile 5	36.8%	36.5%	38.5%	36.6%	38.5%	39.1%	39.7%	41.5%	42.1%	42.2%

P.6 Placed 18 year old applicants from England by POLAR3 quintile: 1 day after A level results day

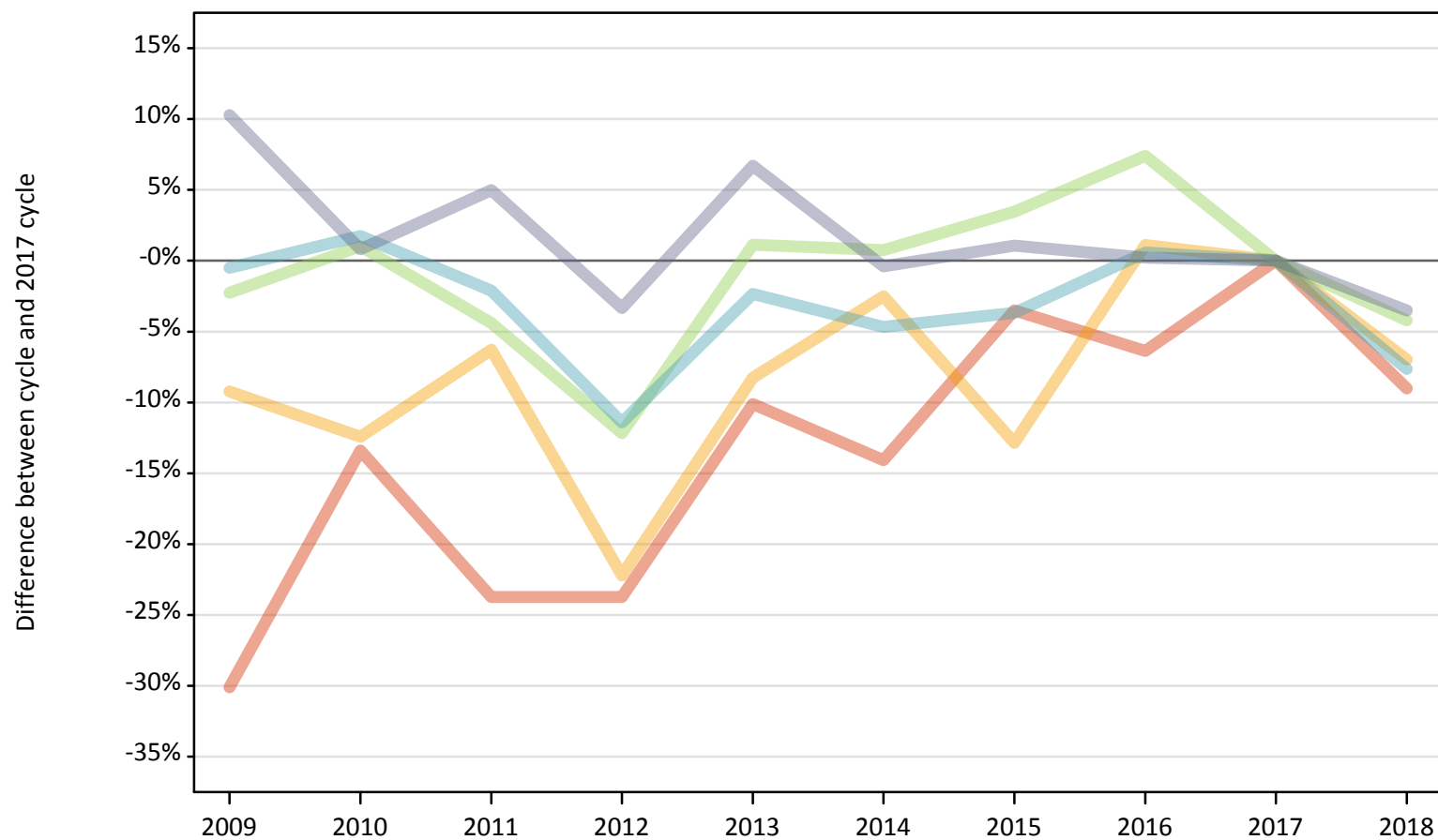
Placed 18 year old applicants: entry rate (indexed to 100 = Quintile 1)

Applicant Status	POLAR3	2009	2010	2011	2012	2013	2014	2015	2016	2017	2018
Placed	Quintile 1	100	100	100	100	100	100	100	100	100	100
	Quintile 2	149	145	143	141	142	137	138	135	133	135
	Quintile 3	186	180	179	175	173	165	165	161	160	158
	Quintile 4	238	236	229	216	211	197	200	193	188	190
	Quintile 5	320	304	298	283	269	254	249	243	238	237

P.7 Placed 18 year old applicants from Northern Ireland by POLAR3 quintile: 1 day after A level results day

Placed 18 year old applicants: change relative to 2017 cycle totals

- Quintile 1
- Quintile 2
- Quintile 3
- Quintile 4
- Quintile 5



Note: The percentage change is not plotted in the above chart for groups with fewer than 30 placed applicants in any one cycle.

P.8 Placed 18 year old applicants from Northern Ireland by POLAR3 quintile: 1 day after A level results day

Applicant Status	POLAR3	2009	2010	2011	2012	2013	2014	2015	2016	2017	2018
Placed	Quintile 1	320	390	350	350	410	390	440	430	460	410
	Quintile 2	650	630	670	560	660	700	620	720	720	670
	Quintile 3	1,040	1,080	1,020	940	1,080	1,080	1,110	1,150	1,070	1,020
	Quintile 4	2,220	2,270	2,180	1,970	2,180	2,120	2,150	2,240	2,230	2,060
	Quintile 5	3,080	2,810	2,930	2,700	2,980	2,780	2,820	2,800	2,790	2,690

P.9 Placed 18 year old applicants from Northern Ireland by POLAR3 quintile: 1 day after A level results day

Placed 18 year old applicants: change relative to 2017 cycle totals

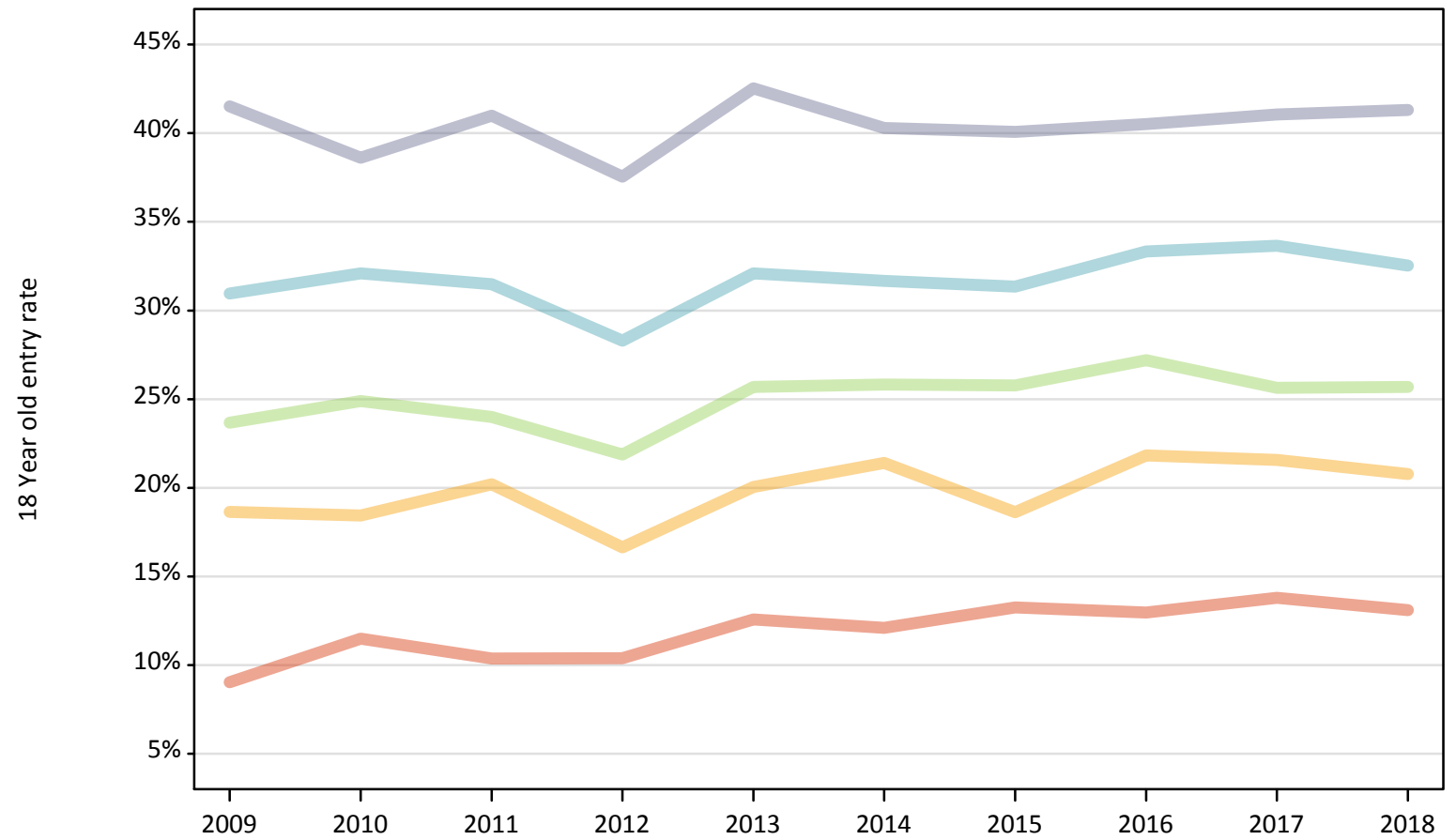
Applicant Status	POLAR3	2009	2010	2011	2012	2013	2014	2015	2016	2017	2018
Placed	Quintile 1	-30%	-13%	-24%	-24%	-10%	-14%	-4%	-6%	0%	-9%
	Quintile 2	-9%	-12%	-6%	-22%	-8%	-3%	-13%	1%	0%	-7%
	Quintile 3	-2%	1%	-4%	-12%	1%	1%	3%	7%	0%	-4%
	Quintile 4	-0%	2%	-2%	-11%	-2%	-5%	-4%	1%	0%	-8%
	Quintile 5	10%	1%	5%	-3%	7%	-0%	1%	0%	0%	-4%

Note: The percentage change is not recorded in the above table for groups with fewer than 10 placed applicants in that cycle or in the 2017 cycle.

P.10 Placed 18 year old applicants from Northern Ireland by POLAR3 quintile: 1 day after A level results day

Placed 18 year old applicants: entry rate

- Quintile 1
- Quintile 2
- Quintile 3
- Quintile 4
- Quintile 5



P.11 Placed 18 year old applicants from Northern Ireland by POLAR3 quintile: 1 day after A level results day

Placed 18 year old applicants: entry rate

Applicant Status	POLAR3	2009	2010	2011	2012	2013	2014	2015	2016	2017	2018
Placed	Quintile 1	9.0%	11.5%	10.4%	10.4%	12.6%	12.1%	13.2%	13.0%	13.8%	13.1%
	Quintile 2	18.6%	18.4%	20.2%	16.6%	20.0%	21.4%	18.6%	21.8%	21.6%	20.8%
	Quintile 3	23.7%	24.9%	24.0%	21.9%	25.7%	25.8%	25.8%	27.2%	25.6%	25.7%
	Quintile 4	31.0%	32.1%	31.5%	28.3%	32.1%	31.7%	31.4%	33.3%	33.7%	32.5%
	Quintile 5	41.5%	38.6%	41.0%	37.5%	42.5%	40.3%	40.1%	40.5%	41.1%	41.3%

P.12 Placed 18 year old applicants from Northern Ireland by POLAR3 quintile: 1 day after A level results day

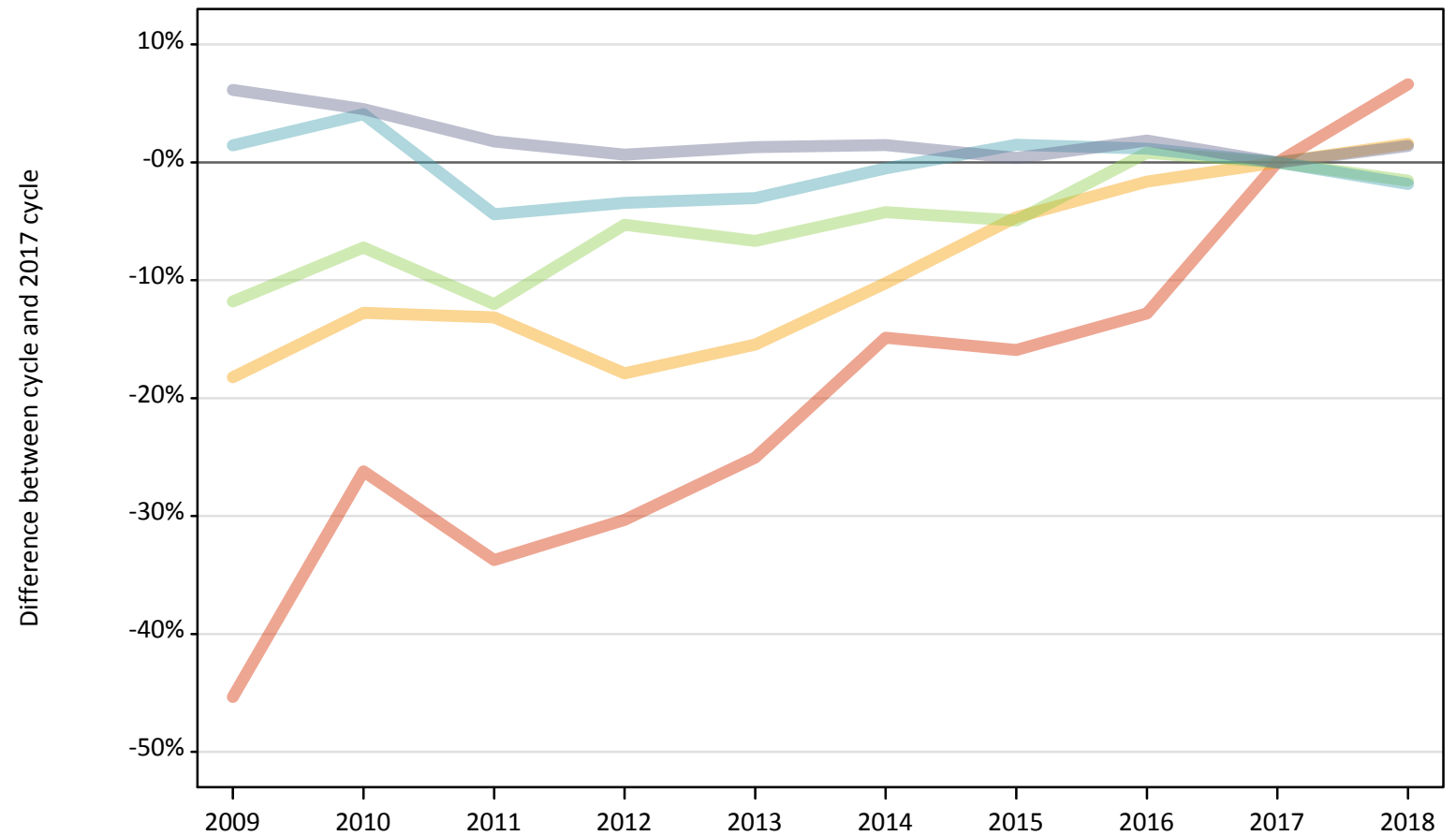
Placed 18 year old applicants: entry rate (indexed to 100 = Quintile 1)

Applicant Status	POLAR3	2009	2010	2011	2012	2013	2014	2015	2016	2017	2018
Placed	Quintile 1	100	100	100	100	100	100	100	100	100	100
	Quintile 2	206	160	195	160	159	177	141	168	156	159
	Quintile 3	262	217	231	210	204	214	194	210	186	196
	Quintile 4	342	279	304	272	255	262	237	257	244	248
	Quintile 5	459	336	395	361	338	333	303	313	297	315

P.13 Placed 18 year old applicants from Scotland by POLAR3 quintile: 1 day after A level results day

Placed 18 year old applicants: change relative to 2017 cycle totals

- Quintile 1
- Quintile 2
- Quintile 3
- Quintile 4
- Quintile 5



Note: The percentage change is not plotted in the above chart for groups with fewer than 30 placed applicants in any one cycle.

P.14 Placed 18 year old applicants from Scotland by POLAR3 quintile: 1 day after A level results day

Applicant Status	POLAR3	2009	2010	2011	2012	2013	2014	2015	2016	2017	2018
Placed	Quintile 1	370	500	450	470	510	580	570	590	680	720
	Quintile 2	1,240	1,330	1,320	1,250	1,290	1,360	1,450	1,500	1,520	1,540
	Quintile 3	1,990	2,090	1,980	2,130	2,100	2,160	2,140	2,270	2,250	2,220
	Quintile 4	3,390	3,470	3,190	3,220	3,240	3,320	3,390	3,380	3,340	3,280
	Quintile 5	6,970	6,870	6,690	6,610	6,650	6,670	6,600	6,690	6,570	6,660

P.15 Placed 18 year old applicants from Scotland by POLAR3 quintile: 1 day after A level results day

Placed 18 year old applicants: change relative to 2017 cycle totals

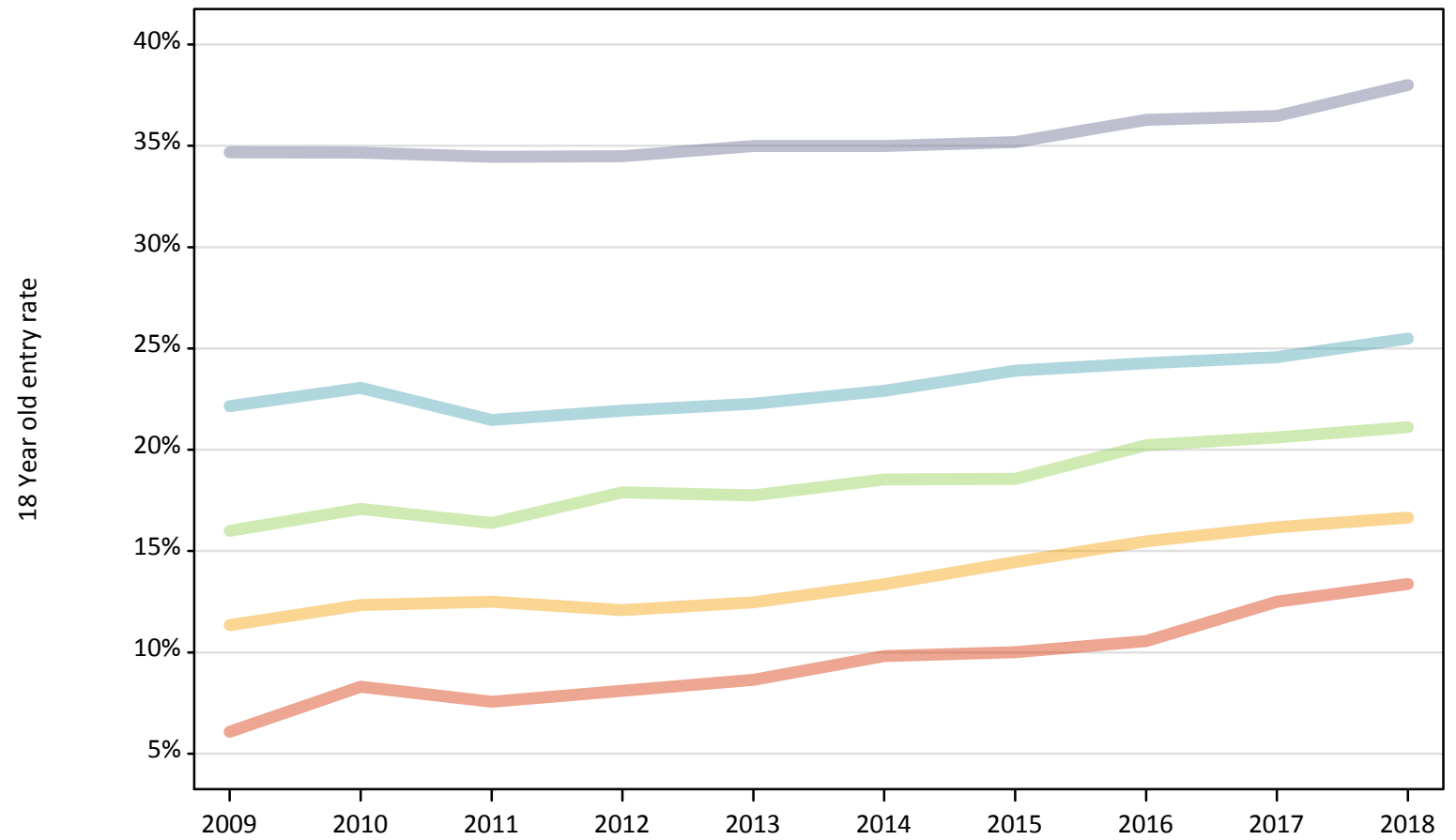
Applicant Status	POLAR3	2009	2010	2011	2012	2013	2014	2015	2016	2017	2018
Placed	Quintile 1	-45%	-26%	-34%	-30%	-25%	-15%	-16%	-13%	0%	7%
	Quintile 2	-18%	-13%	-13%	-18%	-15%	-10%	-5%	-2%	0%	2%
	Quintile 3	-12%	-7%	-12%	-5%	-7%	-4%	-5%	1%	0%	-2%
	Quintile 4	1%	4%	-4%	-3%	-3%	-1%	1%	1%	0%	-2%
	Quintile 5	6%	5%	2%	1%	1%	1%	0%	2%	0%	1%

Note: The percentage change is not recorded in the above table for groups with fewer than 10 placed applicants in that cycle or in the 2017 cycle.

P.16 Placed 18 year old applicants from Scotland by POLAR3 quintile: 1 day after A level results day

Placed 18 year old applicants: entry rate

- Quintile 1
- Quintile 2
- Quintile 3
- Quintile 4
- Quintile 5



P.17 Placed 18 year old applicants from Scotland by POLAR3 quintile: 1 day after A level results day

Placed 18 year old applicants: entry rate

Applicant Status	POLAR3	2009	2010	2011	2012	2013	2014	2015	2016	2017	2018
Placed	Quintile 1	6.1%	8.3%	7.6%	8.1%	8.7%	9.8%	10.0%	10.6%	12.5%	13.4%
	Quintile 2	11.3%	12.3%	12.5%	12.1%	12.5%	13.4%	14.5%	15.5%	16.2%	16.7%
	Quintile 3	16.0%	17.1%	16.4%	17.9%	17.8%	18.5%	18.6%	20.2%	20.6%	21.1%
	Quintile 4	22.2%	23.1%	21.5%	21.9%	22.3%	22.9%	23.9%	24.3%	24.6%	25.5%
	Quintile 5	34.7%	34.7%	34.5%	34.5%	35.0%	35.0%	35.2%	36.3%	36.5%	38.0%

P.18 Placed 18 year old applicants from Scotland by POLAR3 quintile: 1 day after A level results day

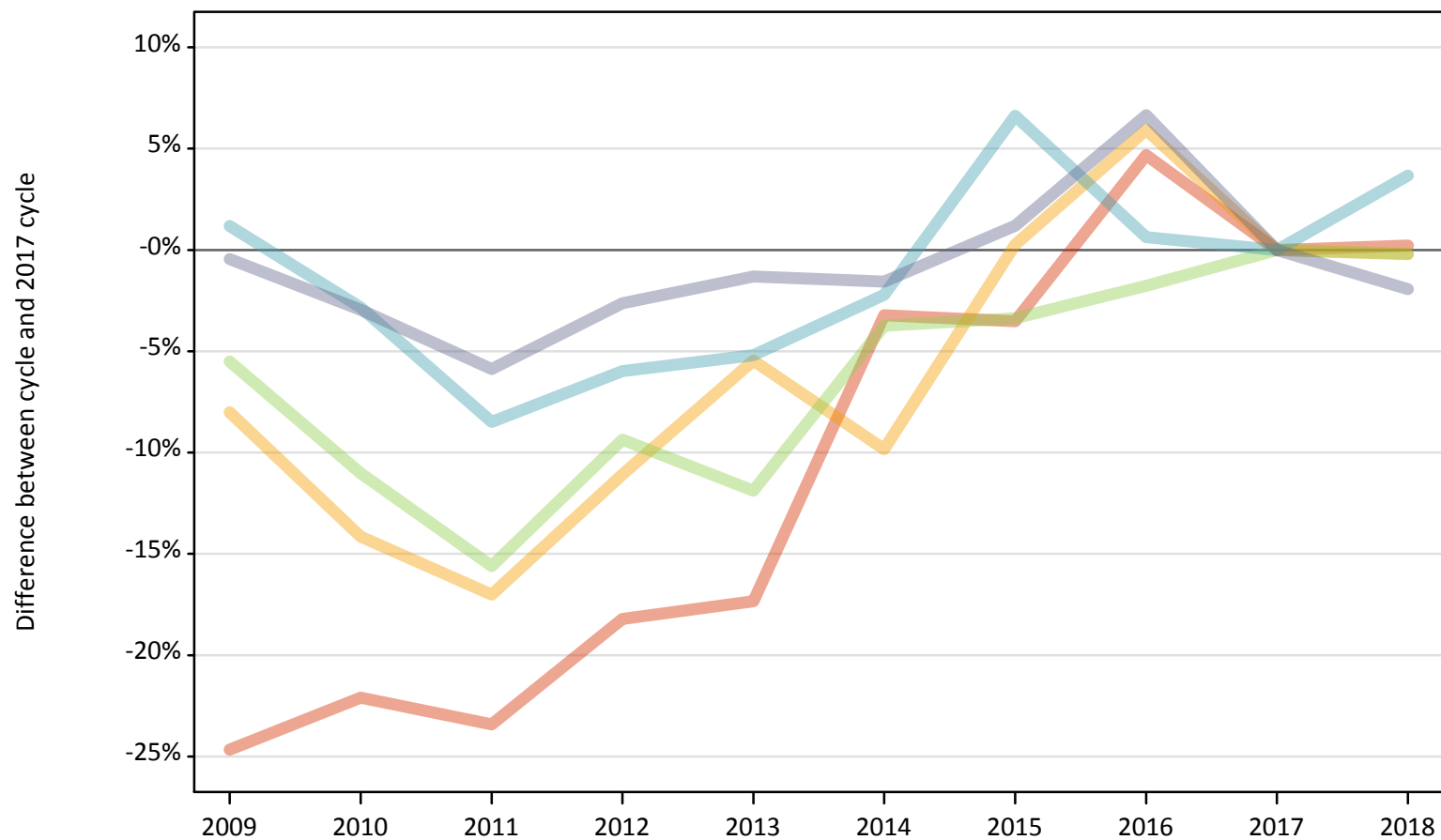
Placed 18 year old applicants: entry rate (indexed to 100 = Quintile 1)

Applicant Status	POLAR3	2009	2010	2011	2012	2013	2014	2015	2016	2017	2018
Placed	Quintile 1	100	100	100	100	100	100	100	100	100	100
	Quintile 2	186	148	165	149	144	136	145	147	129	125
	Quintile 3	263	205	217	221	205	189	186	192	165	158
	Quintile 4	364	277	284	271	257	233	239	230	197	191
	Quintile 5	570	417	455	426	404	356	352	344	292	284

P.19 Placed 18 year old applicants from Wales by POLAR3 quintile: 1 day after A level results day

Placed 18 year old applicants: change relative to 2017 cycle totals

- Quintile 1
- Quintile 2
- Quintile 3
- Quintile 4
- Quintile 5



Note: The percentage change is not plotted in the above chart for groups with fewer than 30 placed applicants in any one cycle.

P.20 Placed 18 year old applicants from Wales by POLAR3 quintile: 1 day after A level results day

Applicant Status	POLAR3	2009	2010	2011	2012	2013	2014	2015	2016	2017	2018
Placed	Quintile 1	1,030	1,070	1,050	1,120	1,130	1,320	1,320	1,430	1,370	1,370
	Quintile 2	1,770	1,650	1,600	1,710	1,820	1,730	1,930	2,040	1,920	1,920
	Quintile 3	1,540	1,450	1,380	1,480	1,440	1,570	1,580	1,610	1,630	1,630
	Quintile 4	2,060	1,980	1,870	1,920	1,930	2,000	2,180	2,050	2,040	2,120
	Quintile 5	2,420	2,360	2,290	2,370	2,400	2,400	2,460	2,600	2,430	2,390

P.21 Placed 18 year old applicants from Wales by POLAR3 quintile: 1 day after A level results day

Placed 18 year old applicants: change relative to 2017 cycle totals

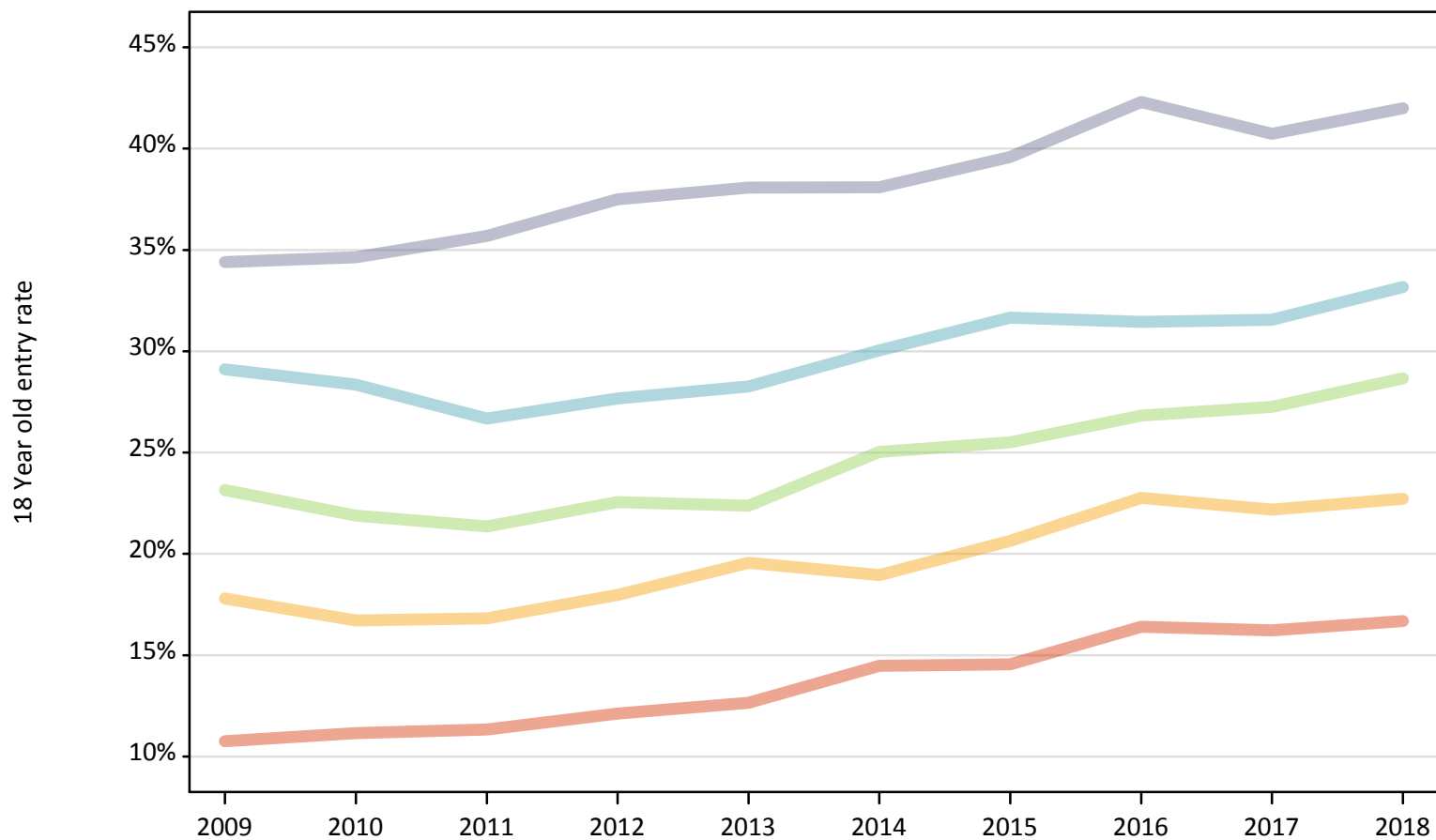
Applicant Status	POLAR3	2009	2010	2011	2012	2013	2014	2015	2016	2017	2018
Placed	Quintile 1	-25%	-22%	-23%	-18%	-17%	-3%	-4%	5%	0%	0%
	Quintile 2	-8%	-14%	-17%	-11%	-5%	-10%	0%	6%	0%	-0%
	Quintile 3	-6%	-11%	-16%	-9%	-12%	-4%	-3%	-2%	0%	-0%
	Quintile 4	1%	-3%	-8%	-6%	-5%	-2%	7%	1%	0%	4%
	Quintile 5	-0%	-3%	-6%	-3%	-1%	-2%	1%	7%	0%	-2%

Note: The percentage change is not recorded in the above table for groups with fewer than 10 placed applicants in that cycle or in the 2017 cycle.

P.22 Placed 18 year old applicants from Wales by POLAR3 quintile: 1 day after A level results day

Placed 18 year old applicants: entry rate

- Quintile 1
- Quintile 2
- Quintile 3
- Quintile 4
- Quintile 5



P.23 Placed 18 year old applicants from Wales by POLAR3 quintile: 1 day after A level results day

Placed 18 year old applicants: entry rate

Applicant Status	POLAR3	2009	2010	2011	2012	2013	2014	2015	2016	2017	2018
Placed	Quintile 1	10.8%	11.2%	11.3%	12.1%	12.7%	14.5%	14.5%	16.4%	16.2%	16.7%
	Quintile 2	17.8%	16.7%	16.8%	18.0%	19.6%	19.0%	20.6%	22.8%	22.2%	22.7%
	Quintile 3	23.1%	21.9%	21.4%	22.6%	22.4%	25.0%	25.5%	26.8%	27.3%	28.7%
	Quintile 4	29.1%	28.4%	26.7%	27.7%	28.3%	30.0%	31.7%	31.5%	31.6%	33.2%
	Quintile 5	34.4%	34.6%	35.7%	37.5%	38.1%	38.1%	39.6%	42.3%	40.7%	42.0%

P.24 Placed 18 year old applicants from Wales by POLAR3 quintile: 1 day after A level results day

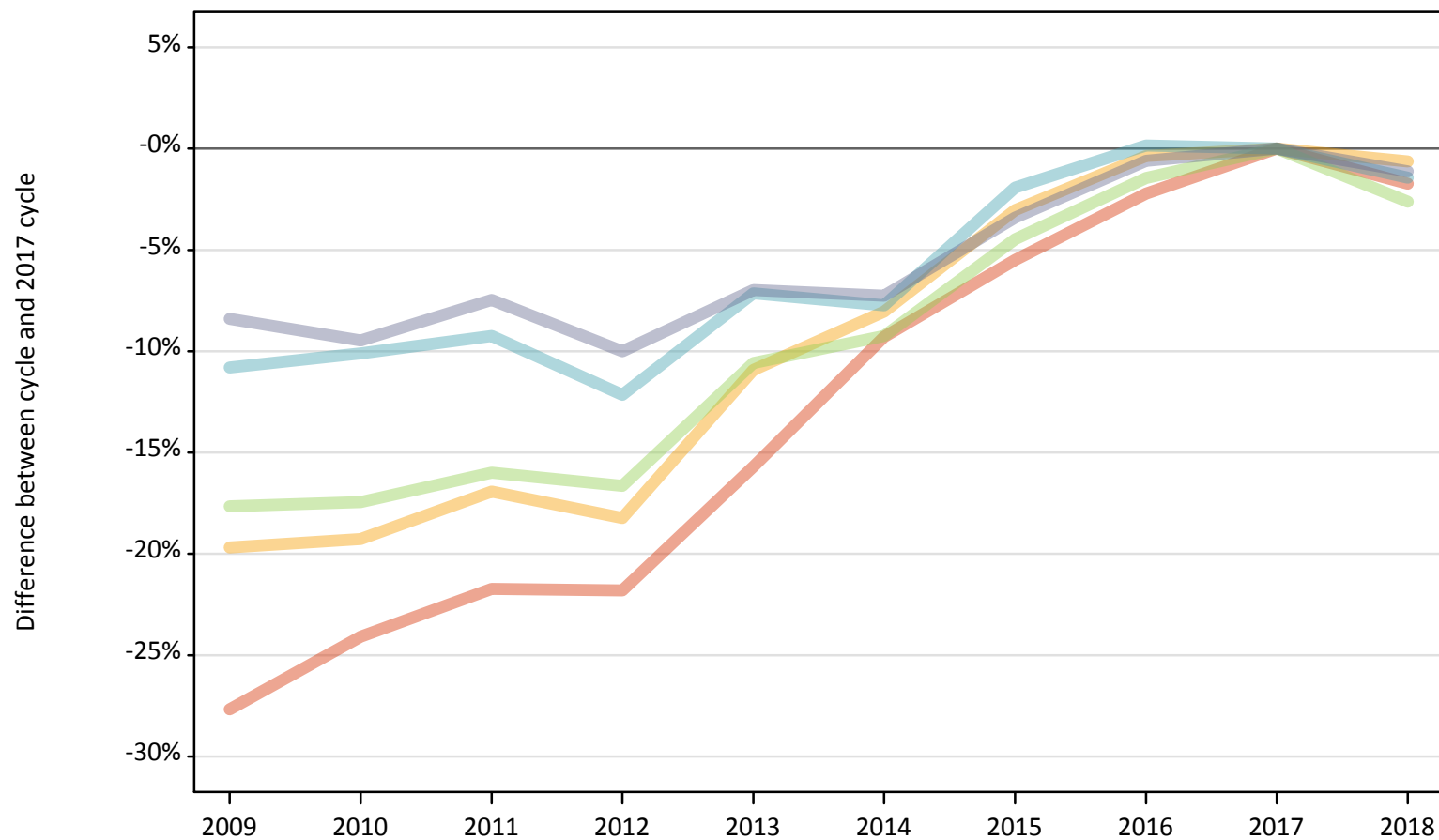
Placed 18 year old applicants: entry rate (indexed to 100 = Quintile 1)

Applicant Status	POLAR3	2009	2010	2011	2012	2013	2014	2015	2016	2017	2018
Placed	Quintile 1	100	100	100	100	100	100	100	100	100	100
	Quintile 2	166	150	148	148	155	131	142	139	137	136
	Quintile 3	215	196	188	186	177	173	175	163	168	172
	Quintile 4	271	254	235	228	223	208	218	192	194	199
	Quintile 5	320	310	315	309	301	263	272	258	251	252

P.25 Placed 18 year old applicants from the UK by POLAR3 quintile: 1 day after A level results day

Placed 18 year old applicants: change relative to 2017 cycle totals

- Quintile 1
- Quintile 2
- Quintile 3
- Quintile 4
- Quintile 5



Note: The percentage change is not plotted in the above chart for groups with fewer than 30 placed applicants in any one cycle.

P.26 Placed 18 year old applicants from the UK by POLAR3 quintile: 1 day after A level results day

Applicant Status	POLAR3	2009	2010	2011	2012	2013	2014	2015	2016	2017	2018
Placed	Quintile 1	16,640	17,470	18,010	18,000	19,400	20,880	21,750	22,500	23,010	22,610
	Quintile 2	26,120	26,260	27,020	26,590	28,970	29,910	31,540	32,410	32,520	32,320
	Quintile 3	33,930	34,020	34,620	34,350	36,850	37,400	39,360	40,610	41,210	40,130
	Quintile 4	44,240	44,580	45,010	43,570	46,060	45,760	48,650	49,670	49,600	48,890
	Quintile 5	62,330	61,600	62,970	61,240	63,300	63,100	65,720	67,630	68,040	67,280

P.27 Placed 18 year old applicants from the UK by POLAR3 quintile: 1 day after A level results day

Placed 18 year old applicants: change relative to 2017 cycle totals

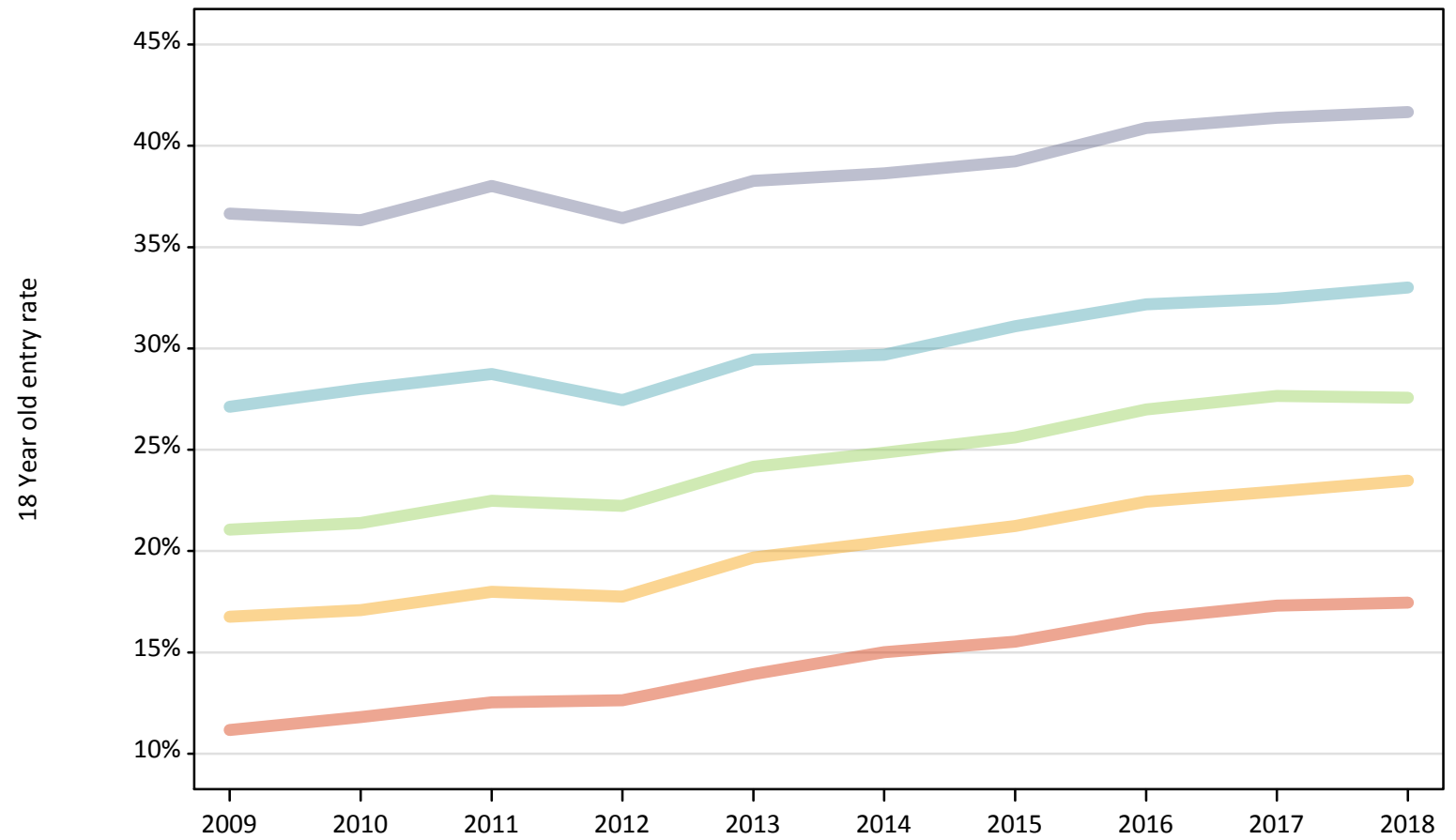
Applicant Status	POLAR3	2009	2010	2011	2012	2013	2014	2015	2016	2017	2018
Placed	Quintile 1	-28%	-24%	-22%	-22%	-16%	-9%	-5%	-2%	0%	-2%
	Quintile 2	-20%	-19%	-17%	-18%	-11%	-8%	-3%	-0%	0%	-1%
	Quintile 3	-18%	-17%	-16%	-17%	-11%	-9%	-4%	-1%	0%	-3%
	Quintile 4	-11%	-10%	-9%	-12%	-7%	-8%	-2%	0%	0%	-1%
	Quintile 5	-8%	-9%	-7%	-10%	-7%	-7%	-3%	-1%	0%	-1%

Note: The percentage change is not recorded in the above table for groups with fewer than 10 placed applicants in that cycle or in the 2017 cycle.

P.28 Placed 18 year old applicants from the UK by POLAR3 quintile: 1 day after A level results day

Placed 18 year old applicants: entry rate

- Quintile 1
- Quintile 2
- Quintile 3
- Quintile 4
- Quintile 5



P.29 Placed 18 year old applicants from the UK by POLAR3 quintile: 1 day after A level results day

Placed 18 year old applicants: entry rate

Applicant Status	POLAR3	2009	2010	2011	2012	2013	2014	2015	2016	2017	2018
Placed	Quintile 1	11.2%	11.8%	12.5%	12.6%	13.9%	15.0%	15.5%	16.7%	17.3%	17.5%
	Quintile 2	16.8%	17.1%	18.0%	17.7%	19.7%	20.5%	21.2%	22.4%	22.9%	23.5%
	Quintile 3	21.1%	21.4%	22.5%	22.2%	24.2%	24.8%	25.6%	27.0%	27.7%	27.6%
	Quintile 4	27.1%	28.0%	28.7%	27.5%	29.4%	29.7%	31.1%	32.2%	32.5%	33.0%
	Quintile 5	36.7%	36.3%	38.0%	36.4%	38.3%	38.6%	39.2%	40.9%	41.4%	41.7%

P.30 Placed 18 year old applicants from the UK by POLAR3 quintile: 1 day after A level results day

Placed 18 year old applicants: entry rate (indexed to 100 = Quintile 1)

Applicant Status	POLAR3	2009	2010	2011	2012	2013	2014	2015	2016	2017	2018
Placed	Quintile 1	100	100	100	100	100	100	100	100	100	100
	Quintile 2	150	145	143	140	141	136	137	135	133	134
	Quintile 3	189	181	179	176	173	166	165	162	160	158
	Quintile 4	243	237	229	217	211	198	200	193	188	189
	Quintile 5	328	308	303	288	275	258	253	245	239	239