

Daily Clearing Analysis: Tariff

Analysis at 00:05 on Friday 17 August 2018 (1 day after A level results day)

T.1 Placed applicants from all domiciles by tariff group: 1 day after A level results day

Placed applicants: change relative to 2017 cycle totals

- Lower tariff
- Medium tariff
- Higher tariff



Note: The percentage change is not plotted in the above chart for groups with fewer than 30 placed applicants in any one cycle.

T.2 Placed applicants from all domiciles by tariff group: 1 day after A level results day

Applicant Status	Tariff group	2009	2010	2011	2012	2013	2014	2015	2016	2017	2018
Placed	Lower tariff	142,420	149,950	159,050	140,640	154,790	157,040	159,770	161,700	153,130	148,150
	Medium tariff	119,410	124,820	126,310	116,020	127,040	130,990	136,350	143,260	145,470	143,260
	Higher tariff	114,490	114,470	112,290	111,360	119,720	124,150	132,650	137,910	138,470	138,650

T.3 Placed applicants from all domiciles by tariff group: 1 day after A level results day

Placed applicants: change relative to 2017 cycle totals

Applicant Status	Tariff group	2009	2010	2011	2012	2013	2014	2015	2016	2017	2018
Placed	Lower tariff	-7%	-2%	4%	-8%	1%	3%	4%	6%	0%	-3%
	Medium tariff	-18%	-14%	-13%	-20%	-13%	-10%	-6%	-2%	0%	-2%
	Higher tariff	-17%	-17%	-19%	-20%	-14%	-10%	-4%	-0%	0%	0%

Note: The percentage change is not recorded in the above table for groups with fewer than 10 placed applicants in that cycle or in the 2017 cycle.

T.4 Placed applicants from all domiciles by tariff group: 1 day after A level results day

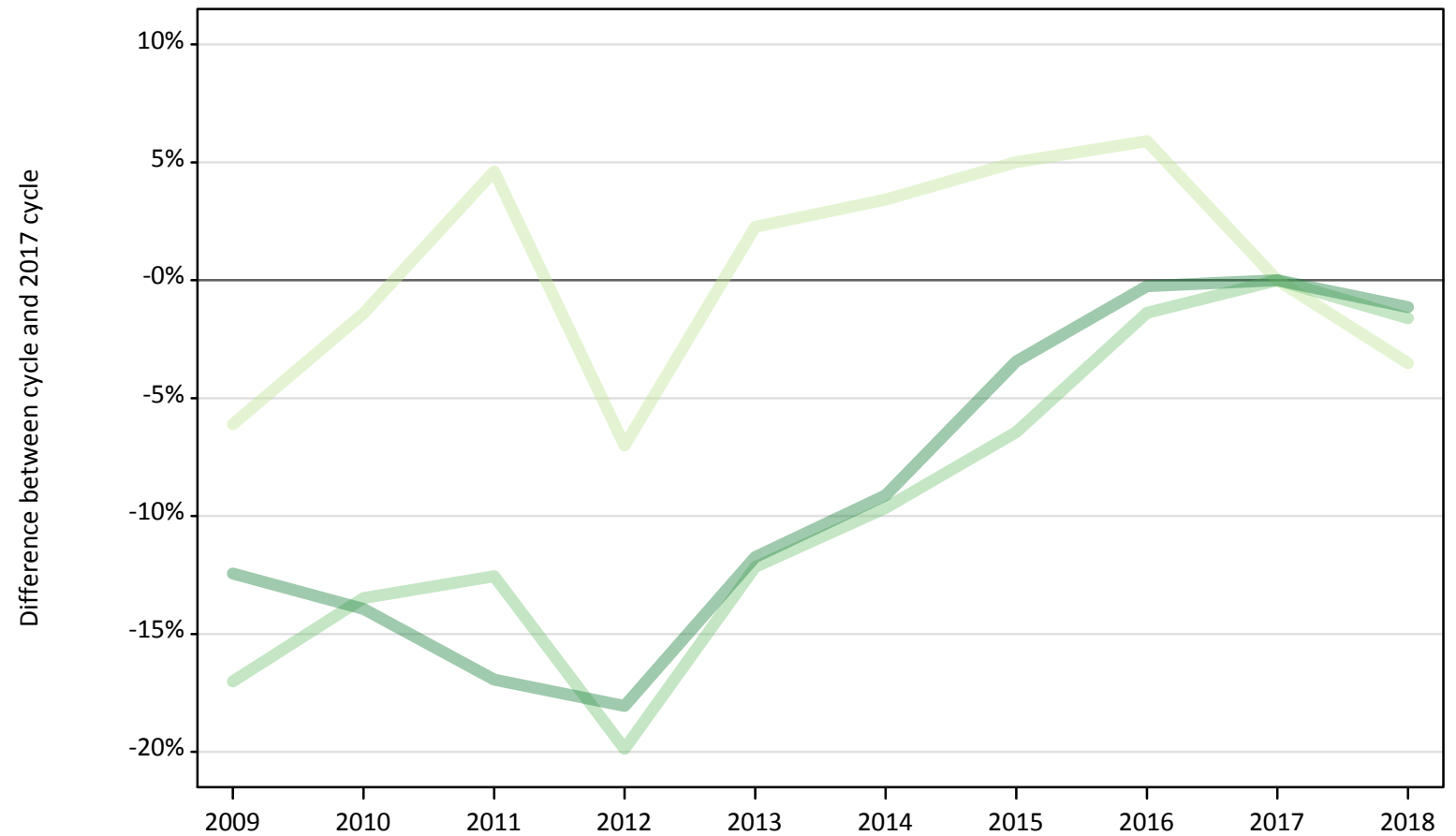
Placed applicants: absolute change relative to 2017 cycle totals

Applicant Status	Tariff group	2009	2010	2011	2012	2013	2014	2015	2016	2017	2018
Placed	Lower tariff	-10,710	-3,180	5,920	-12,500	1,660	3,910	6,640	8,570	0	-4,990
	Medium tariff	-26,060	-20,650	-19,160	-29,450	-18,430	-14,480	-9,130	-2,210	0	-2,210
	Higher tariff	-23,980	-24,000	-26,180	-27,110	-18,760	-14,320	-5,830	-560	0	180

T.5 Placed applicants from the UK by tariff group: 1 day after A level results day

Placed applicants: change relative to 2017 cycle totals

- Lower tariff
- Medium tariff
- Higher tariff



Note: The percentage change is not plotted in the above chart for groups with fewer than 30 placed applicants in any one cycle.

T.6 Placed applicants from the UK by tariff group: 1 day after A level results day

Applicant Status	Tariff group	2009	2010	2011	2012	2013	2014	2015	2016	2017	2018
Placed	Lower tariff	133,600	140,290	148,870	132,330	145,520	147,170	149,430	150,690	142,300	137,300
	Medium tariff	106,870	111,430	112,610	103,190	113,130	116,350	120,490	127,000	128,780	126,710
	Higher tariff	94,400	92,790	89,540	88,340	95,150	97,970	104,110	107,550	107,810	106,580

T.7 Placed applicants from the UK by tariff group: 1 day after A level results day

Placed applicants: change relative to 2017 cycle totals

Applicant Status	Tariff group	2009	2010	2011	2012	2013	2014	2015	2016	2017	2018
Placed	Lower tariff	-6%	-1%	5%	-7%	2%	3%	5%	6%	0%	-4%
	Medium tariff	-17%	-13%	-13%	-20%	-12%	-10%	-6%	-1%	0%	-2%
	Higher tariff	-12%	-14%	-17%	-18%	-12%	-9%	-3%	-0%	0%	-1%

Note: The percentage change is not recorded in the above table for groups with fewer than 10 placed applicants in that cycle or in the 2017 cycle.

T.8 Placed applicants from the UK by tariff group: 1 day after A level results day

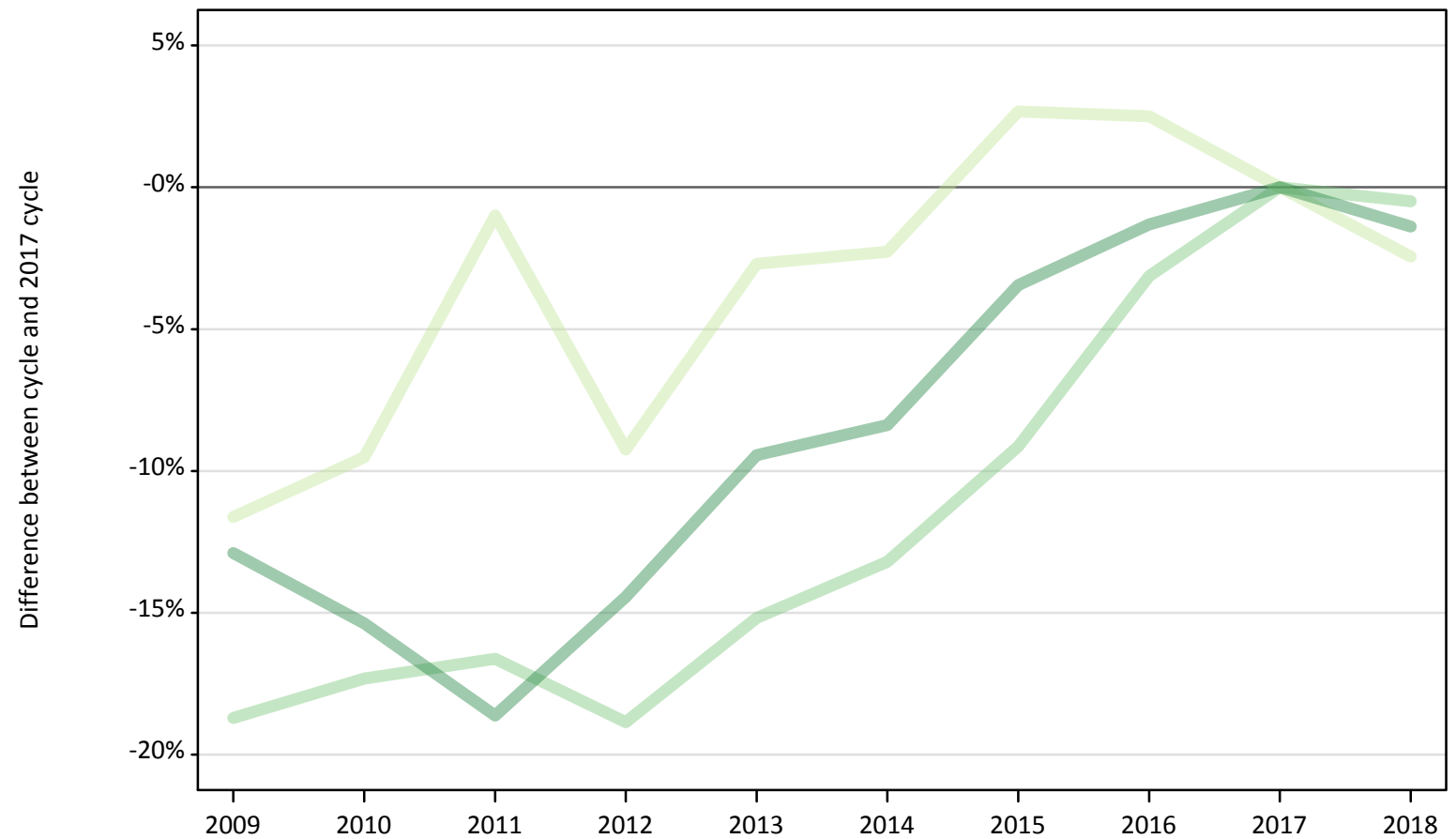
Placed applicants: absolute change relative to 2017 cycle totals

Applicant Status	Tariff group	2009	2010	2011	2012	2013	2014	2015	2016	2017	2018
Placed	Lower tariff	-8,700	-2,010	6,570	-9,970	3,220	4,870	7,130	8,390	0	-5,010
	Medium tariff	-21,910	-17,360	-16,170	-25,590	-15,660	-12,430	-8,290	-1,790	0	-2,070
	Higher tariff	-13,420	-15,030	-18,270	-19,470	-12,660	-9,840	-3,710	-270	0	-1,230

T.9 Placed 18 year old applicants from the UK by tariff group: 1 day after A level results day

Placed 18 year old applicants: change relative to 2017 cycle totals

- Lower tariff
- Medium tariff
- Higher tariff



Note: The percentage change is not plotted in the above chart for groups with fewer than 30 placed applicants in any one cycle.

T.10 Placed 18 year old applicants from the UK by tariff group: 1 day after A level results day

Applicant Status	Tariff group	2009	2010	2011	2012	2013	2014	2015	2016	2017	2018
Placed	Lower tariff	58,760	60,160	65,830	60,350	64,700	64,980	68,270	68,150	66,490	64,870
	Medium tariff	58,920	59,930	60,430	58,810	61,480	62,910	65,860	70,210	72,480	72,120
	Higher tariff	66,080	64,190	61,720	64,900	68,690	69,490	73,240	74,860	75,850	74,810

T.11 Placed 18 year old applicants from the UK by tariff group: 1 day after A level results day

Placed 18 year old applicants: change relative to 2017 cycle totals

Applicant Status	Tariff group	2009	2010	2011	2012	2013	2014	2015	2016	2017	2018
Placed	Lower tariff	-12%	-10%	-1%	-9%	-3%	-2%	3%	2%	0%	-2%
	Medium tariff	-19%	-17%	-17%	-19%	-15%	-13%	-9%	-3%	0%	-0%
	Higher tariff	-13%	-15%	-19%	-14%	-9%	-8%	-3%	-1%	0%	-1%

Note: The percentage change is not recorded in the above table for groups with fewer than 10 placed applicants in that cycle or in the 2017 cycle.

T.12 Placed 18 year old applicants from the UK by tariff group: 1 day after A level results day

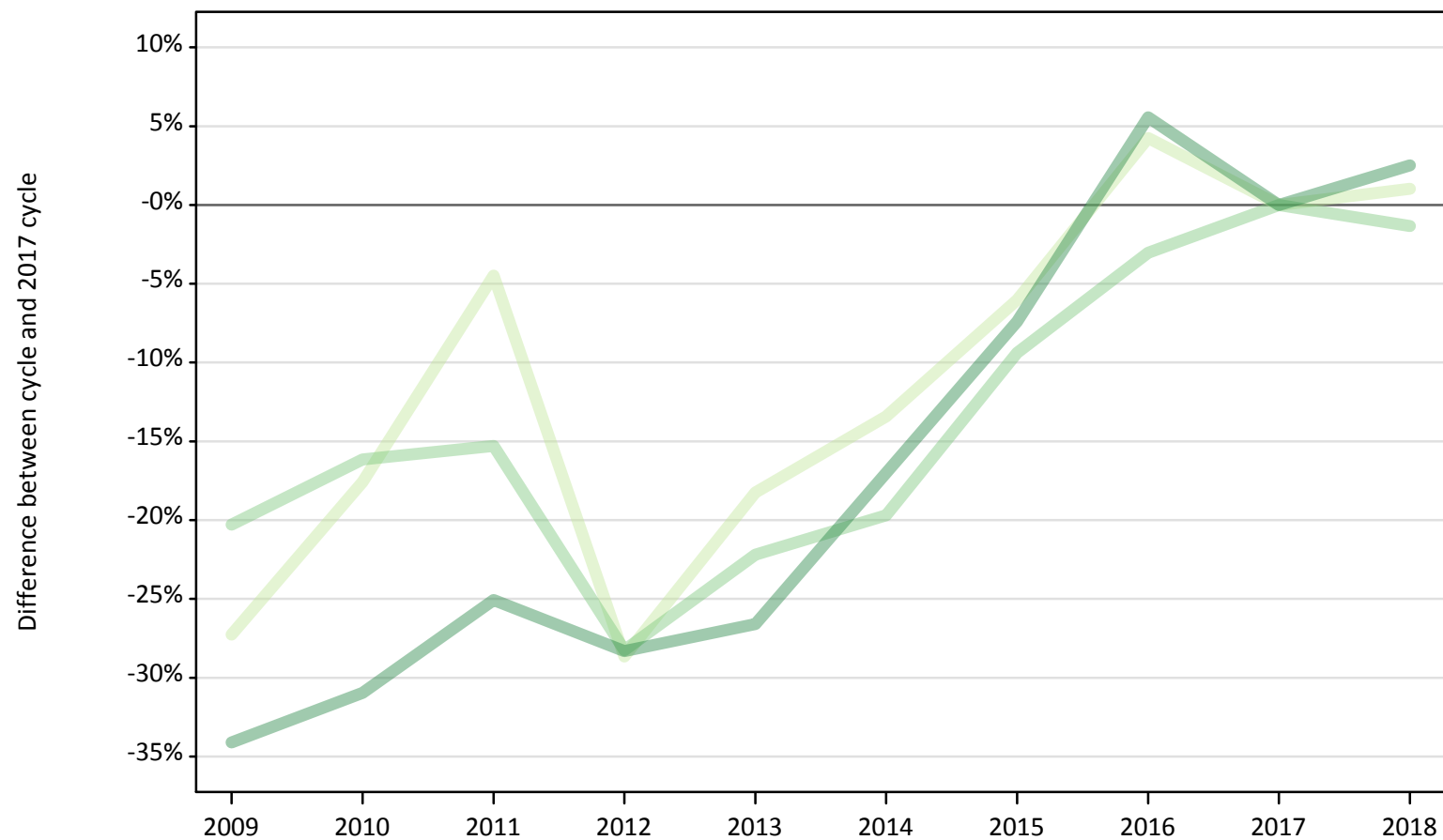
Placed 18 year old applicants: absolute change relative to 2017 cycle totals

Applicant Status	Tariff group	2009	2010	2011	2012	2013	2014	2015	2016	2017	2018
Placed	Lower tariff	-7,730	-6,330	-660	-6,140	-1,790	-1,510	1,780	1,660	0	-1,620
	Medium tariff	-13,560	-12,550	-12,050	-13,670	-11,000	-9,570	-6,620	-2,270	0	-360
	Higher tariff	-9,780	-11,660	-14,130	-10,950	-7,170	-6,360	-2,620	-1,000	0	-1,050

T.13 Placed applicants from the EU (excluding the UK) by tariff group: 1 day after A level results day

Placed applicants: change relative to 2017 cycle totals

- Lower tariff
- Medium tariff
- Higher tariff



Note: The percentage change is not plotted in the above chart for groups with fewer than 30 placed applicants in any one cycle.

T.14 Placed applicants from the EU (excluding the UK) by tariff group: 1 day after A level results day

Applicant Status	Tariff group	2009	2010	2011	2012	2013	2014	2015	2016	2017	2018
Placed	Lower tariff	5,200	5,890	6,830	5,100	5,850	6,190	6,720	7,450	7,150	7,220
	Medium tariff	6,730	7,080	7,160	6,060	6,570	6,780	7,660	8,190	8,450	8,340
	Higher tariff	7,390	7,740	8,400	8,040	8,230	9,300	10,380	11,830	11,210	11,490

T.15 Placed applicants from the EU (excluding the UK) by tariff group: 1 day after A level results day

Placed applicants: change relative to 2017 cycle totals

Applicant Status	Tariff group	2009	2010	2011	2012	2013	2014	2015	2016	2017	2018
Placed	Lower tariff	-27%	-18%	-4%	-29%	-18%	-13%	-6%	4%	0%	1%
	Medium tariff	-20%	-16%	-15%	-28%	-22%	-20%	-9%	-3%	0%	-1%
	Higher tariff	-34%	-31%	-25%	-28%	-27%	-17%	-7%	6%	0%	3%

Note: The percentage change is not recorded in the above table for groups with fewer than 10 placed applicants in that cycle or in the 2017 cycle.

T.16 Placed applicants from the EU (excluding the UK) by tariff group: 1 day after A level results day

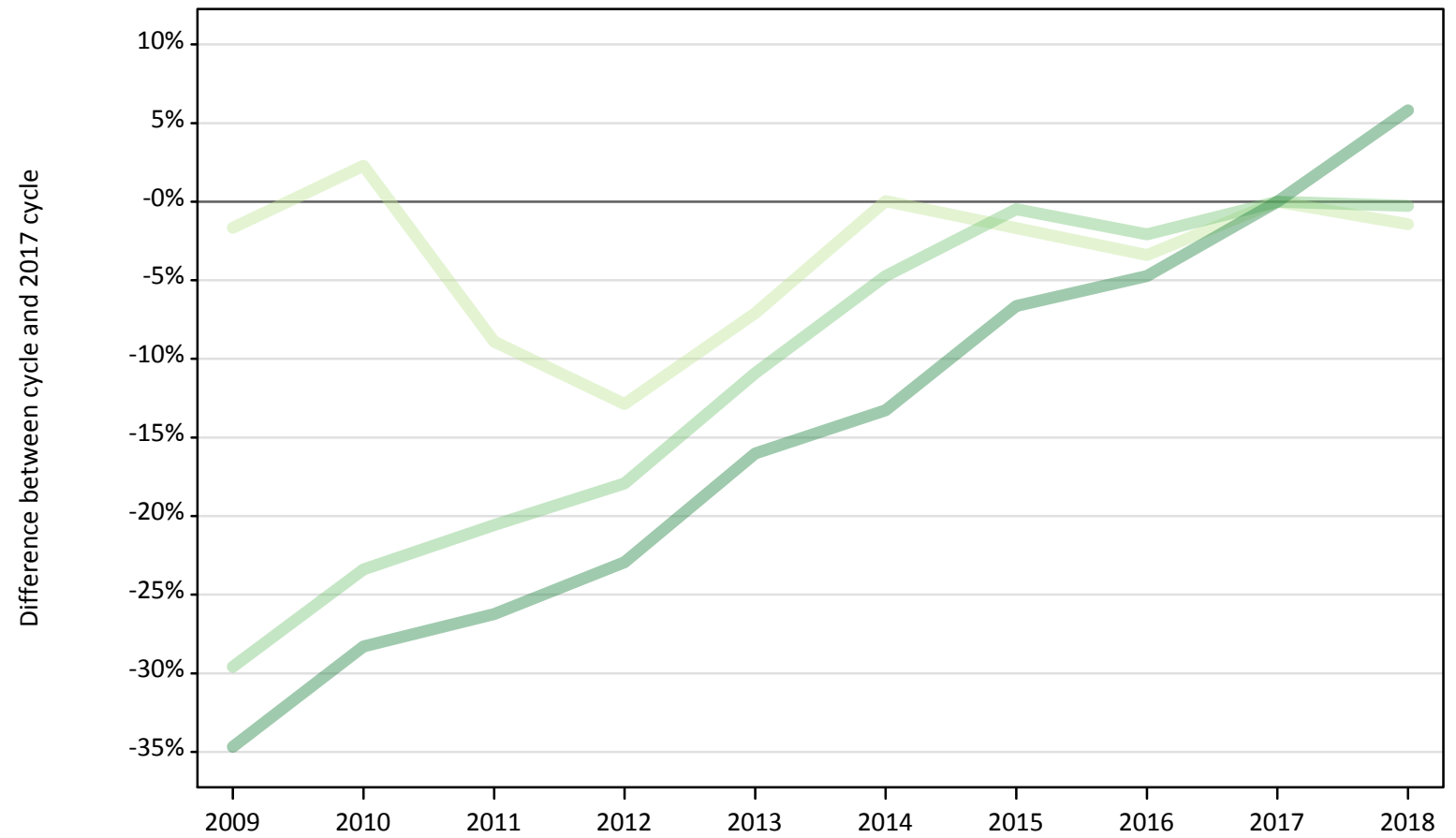
Placed applicants: absolute change relative to 2017 cycle totals

Applicant Status	Tariff group	2009	2010	2011	2012	2013	2014	2015	2016	2017	2018
Placed	Lower tariff	-1,950	-1,260	-320	-2,050	-1,300	-960	-430	300	0	70
	Medium tariff	-1,710	-1,370	-1,290	-2,390	-1,870	-1,660	-790	-260	0	-110
	Higher tariff	-3,820	-3,470	-2,810	-3,170	-2,980	-1,910	-830	620	0	280

T.17 Placed applicants from overseas (not EU) by tariff group: 1 day after A level results day

Placed applicants: change relative to 2017 cycle totals

- Lower tariff
- Medium tariff
- Higher tariff



Note: The percentage change is not plotted in the above chart for groups with fewer than 30 placed applicants in any one cycle.

T.18 Placed applicants from overseas (not EU) by tariff group: 1 day after A level results day

Applicant Status	Tariff group	2009	2010	2011	2012	2013	2014	2015	2016	2017	2018
Placed	Lower tariff	3,620	3,770	3,350	3,210	3,420	3,680	3,620	3,560	3,680	3,630
	Medium tariff	5,800	6,310	6,550	6,770	7,340	7,850	8,200	8,070	8,240	8,220
	Higher tariff	12,710	13,950	14,350	14,990	16,340	16,870	18,160	18,530	19,450	20,580

T.19 Placed applicants from overseas (not EU) by tariff group: 1 day after A level results day

Placed applicants: change relative to 2017 cycle totals

Applicant Status	Tariff group	2009	2010	2011	2012	2013	2014	2015	2016	2017	2018
Placed	Lower tariff	-2%	2%	-9%	-13%	-7%	0%	-2%	-3%	0%	-1%
	Medium tariff	-30%	-23%	-21%	-18%	-11%	-5%	-0%	-2%	0%	-0%
	Higher tariff	-35%	-28%	-26%	-23%	-16%	-13%	-7%	-5%	0%	6%

Note: The percentage change is not recorded in the above table for groups with fewer than 10 placed applicants in that cycle or in the 2017 cycle.

T.20 Placed applicants from overseas (not EU) by tariff group: 1 day after A level results day

Placed applicants: absolute change relative to 2017 cycle totals

Applicant Status	Tariff group	2009	2010	2011	2012	2013	2014	2015	2016	2017	2018
Placed	Lower tariff	-60	80	-330	-470	-260	0	-60	-130	0	-50
	Medium tariff	-2,440	-1,930	-1,700	-1,480	-900	-390	-40	-170	0	-20
	Higher tariff	-6,750	-5,500	-5,100	-4,460	-3,110	-2,580	-1,290	-920	0	1,130