

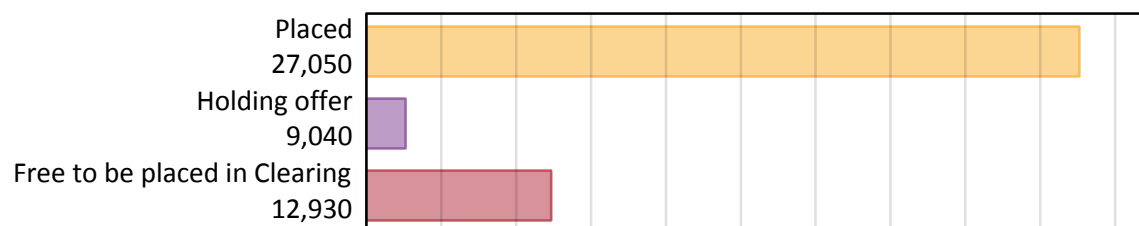
Daily Clearing Analysis: Overview

Analysis at 00:05 on Friday 17 August 2018 (1 day after A level results day)

A.1 Applicants by type and status from the EU - excluding UK, 2018 cycle

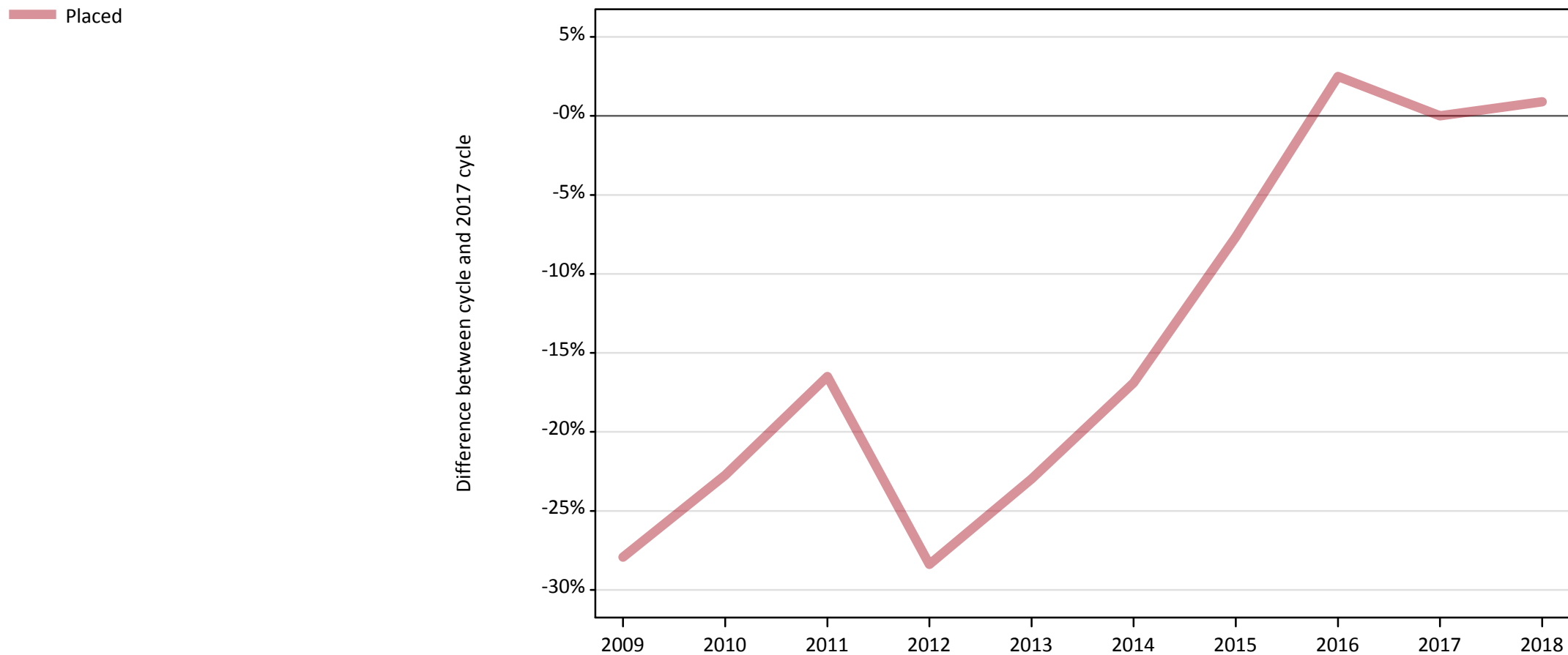
Applicant type	Status	2018
Main scheme	Placed (Clearing)	580
	Placed (Adjustment)	10
	Placed (Firm)	23,340
	Placed (Insurance)	1,860
	Placed (Other)	1,070
	Holding offer	9,040
	Free to be placed in Clearing	12,930
Direct to Clearing	Placed (Direct to Clearing)	180
	Other (Direct to Clearing)	420
All applicants	Placed	27,050

A.2 Summary of applicants who are placed, holding offers or free to be placed in Clearing (the EU - excluding UK)



A.3 All placed applicants from the EU - excluding UK: 1 day after A level results day

All placed applicants: difference between cycle and 2017 cycle



Note: The percentage change is not plotted in the above chart for groups with fewer than 30 placed applicants in any one cycle.

A.4 All placed applicants from the EU - excluding UK: 1 day after A level results day

All placed applicants: applicants at 1 day after A level results day

Applicant type	Status	2009	2010	2011	2012	2013	2014	2015	2016	2017	2018
All applicants	Placed	19,320	20,710	22,390	19,200	20,650	22,280	24,750	27,480	26,810	27,050

A.5 All placed applicants from the EU - excluding UK: 1 day after A level results day

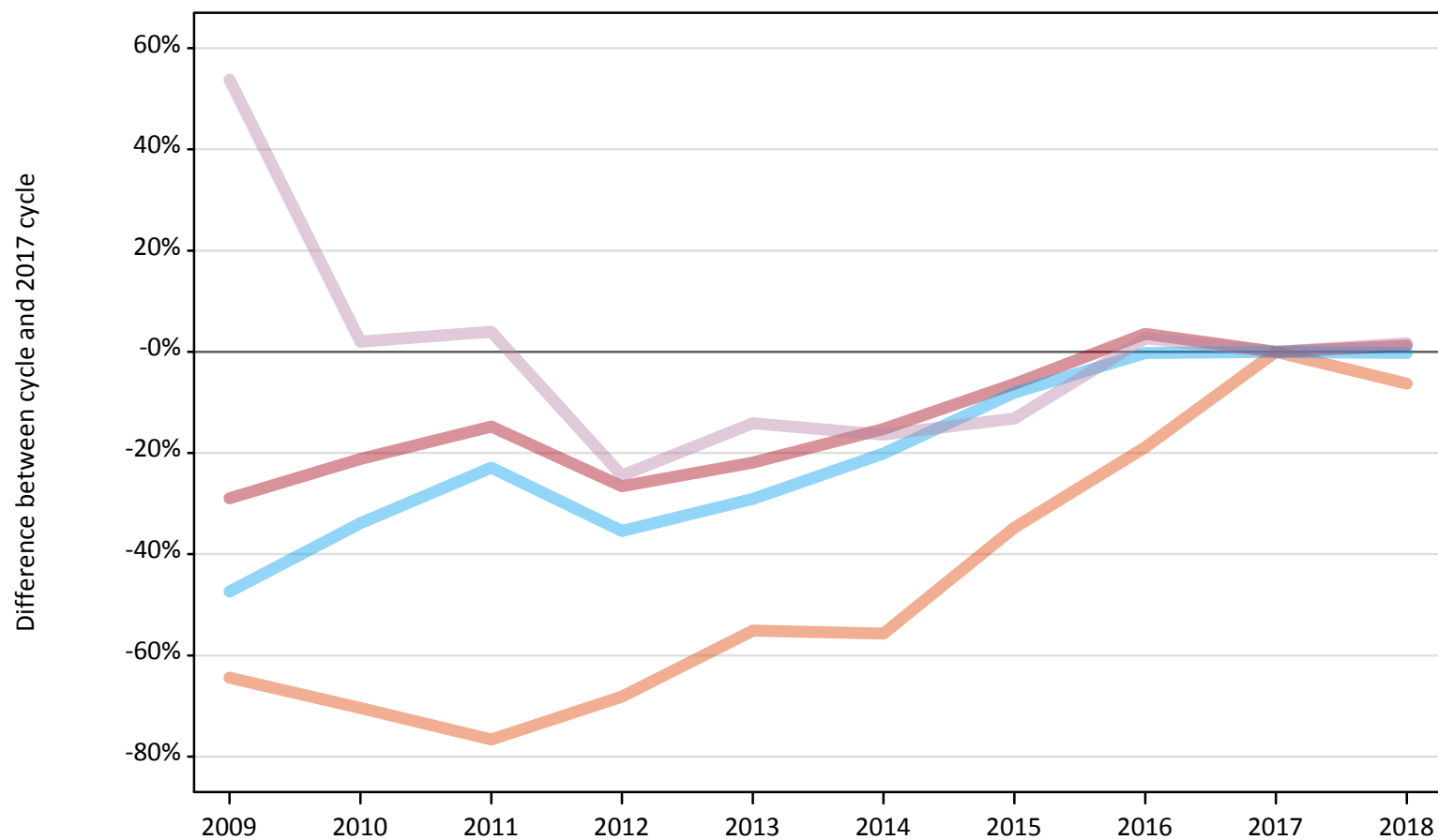
All placed applicants: difference between cycle and 2017 cycle

Applicant type	Status	2009	2010	2011	2012	2013	2014	2015	2016	2017	2018
All applicants	Placed	-28%	-23%	-16%	-28%	-23%	-17%	-8%	3%	0%	1%

Note: The percentage change is not recorded in the above table for groups with fewer than 10 placed applicants in that cycle or in the 2017 cycle.

A.6 Placed main scheme applicants from the EU - excluding UK: 1 day after A level results day
All Main scheme placed routes (excluding Adjustment): difference between cycle and 2017 cycle

- Placed (Clearing)
- Placed (Firm)
- Placed (Insurance)
- Placed (Other)



Note: The percentage change is not plotted in the above chart for groups with fewer than 30 placed applicants in any one cycle.

A.7 Placed main scheme applicants from the EU - excluding UK: 1 day after A level results day

All Main scheme placed routes (excluding Adjustment): applicants at 1 day after A level results day

Applicant type	Status	2009	2010	2011	2012	2013	2014	2015	2016	2017	2018
Main scheme	Placed (Clearing)	220	180	150	200	280	280	410	500	620	580
	Placed (Firm)	16,380	18,170	19,650	16,920	18,010	19,540	21,580	23,870	23,050	23,340
	Placed (Insurance)	980	1,240	1,440	1,210	1,330	1,490	1,720	1,860	1,870	1,860
	Placed (Other)	1,620	1,080	1,100	800	910	880	920	1,080	1,060	1,070

A.8 Placed main scheme applicants from the EU - excluding UK: 1 day after A level results day

All Main scheme placed routes (excluding Adjustment): difference between cycle and 2017 cycle

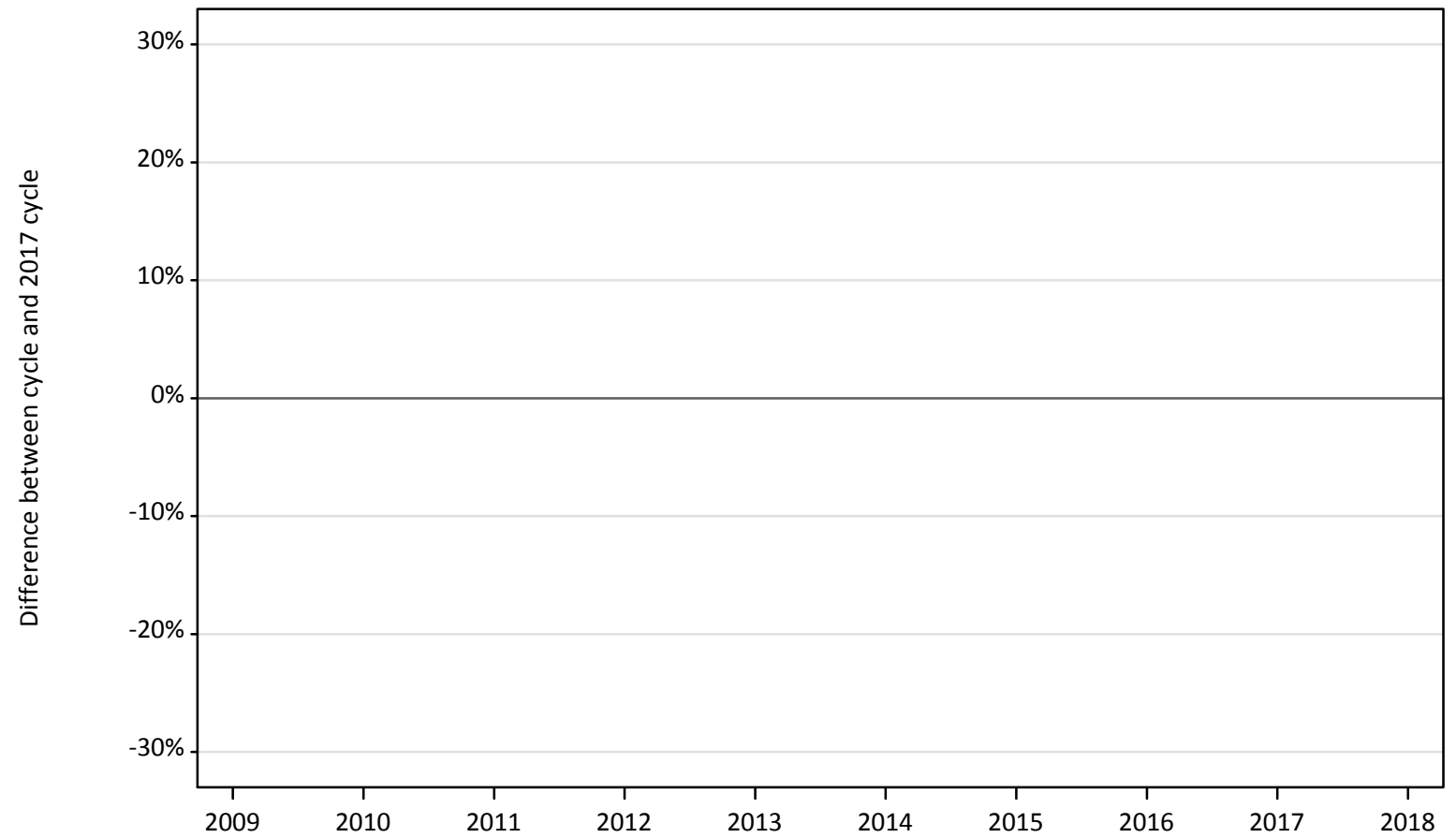
Applicant type	Status	2009	2010	2011	2012	2013	2014	2015	2016	2017	2018
Main scheme	Placed (Clearing)	-64%	-70%	-77%	-68%	-55%	-56%	-35%	-19%	0%	-6%
	Placed (Firm)	-29%	-21%	-15%	-27%	-22%	-15%	-6%	4%	0%	1%
	Placed (Insurance)	-47%	-34%	-23%	-35%	-29%	-20%	-8%	-0%	0%	-0%
	Placed (Other)	54%	2%	4%	-24%	-14%	-16%	-13%	3%	0%	2%

Note: The percentage change is not recorded in the above table for groups with fewer than 10 placed applicants in that cycle or in the 2017 cycle.

A.9 Main scheme applicants placed through adjustment: 1 day after A level results day

Placed through adjustment: difference between cycle and 2017 cycle

Placed (Adjustment)



Note: The percentage change is not plotted in the above chart for groups with fewer than 30 placed applicants in any one cycle.

A.10 Main scheme applicants placed through adjustment: 1 day after A level results day

Placed through adjustment: applicants at 1 day after A level results day

Applicant type	Status	2009	2010	2011	2012	2013	2014	2015	2016	2017	2018
Main scheme	Placed (Adjustment)	0	0	0	10	10	10	10	10	20	10

A.11 Main scheme applicants placed through adjustment: 1 day after A level results day

Placed through adjustment: difference between cycle and 2017 cycle

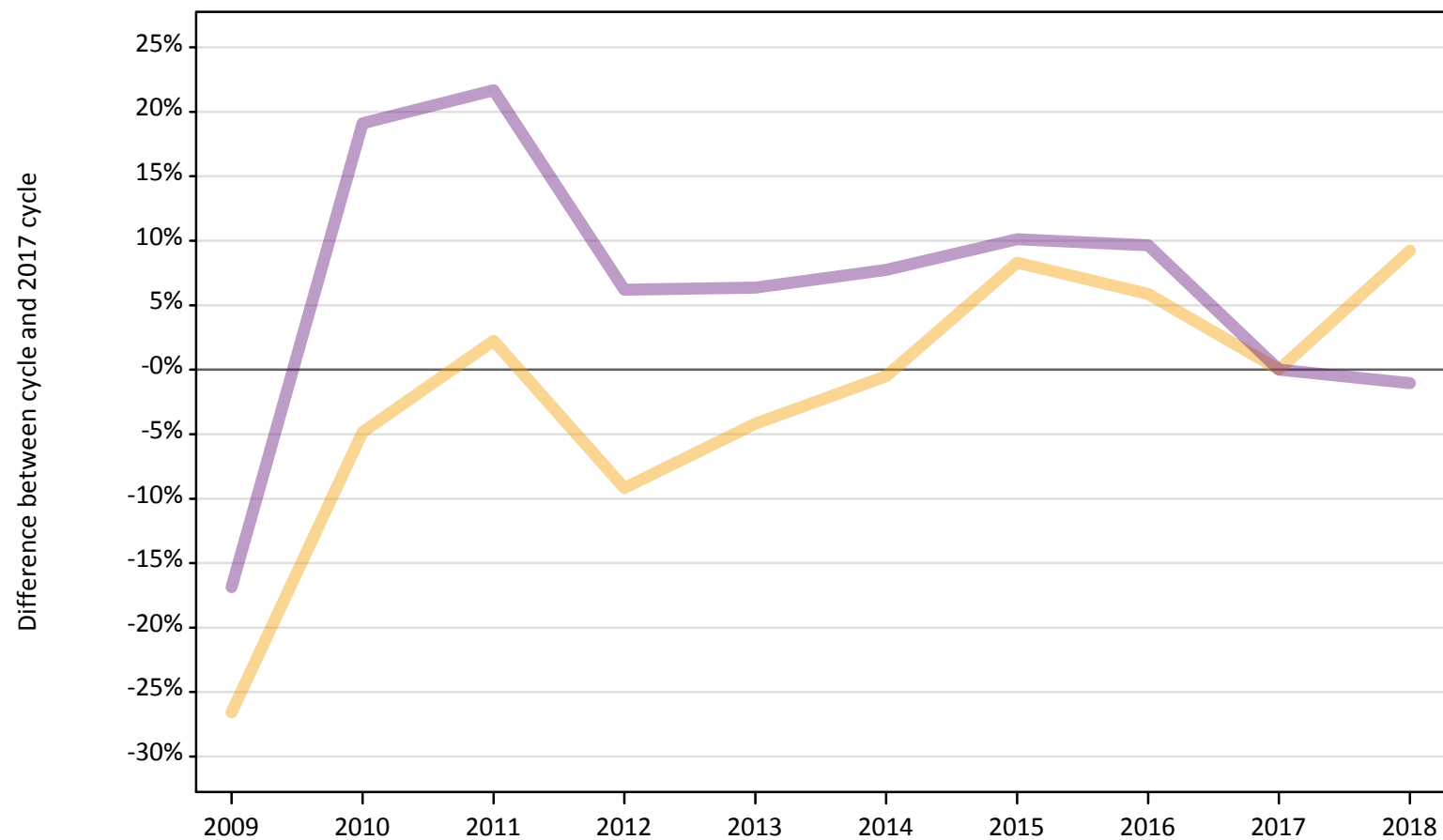
Applicant type	Status	2009	2010	2011	2012	2013	2014	2015	2016	2017	2018
Main scheme	Placed (Adjustment)				-60%	-53%	-33%	-27%	-47%	0%	-47%

Note: The percentage change is not recorded in the above table for groups with fewer than 10 placed applicants in that cycle or in the 2017 cycle.

A.12 Main scheme applicants not currently placed from the EU - excluding UK: 1 day after A level results day

Applicants in unplaced states: difference between cycle and 2017 cycle

— Holding offer
— Free to be placed in Clearing



Note: The percentage change is not plotted in the above chart for groups with fewer than 30 unplaced applicants in any one cycle.

A.13 Main scheme applicants not currently placed from the EU - excluding UK: 1 day after A level results day

Applicants in unplaced states: applicants at 1 day after A level results day

Applicant type	Status	2009	2010	2011	2012	2013	2014	2015	2016	2017	2018
Main scheme	Holding offer	6,080	7,880	8,460	7,520	7,930	8,240	8,970	8,760	8,280	9,040
	Free to be placed in Clearing	10,870	15,570	15,900	13,880	13,900	14,080	14,390	14,330	13,070	12,930

A.14 Main scheme applicants not currently placed from the EU - excluding UK: 1 day after A level results day

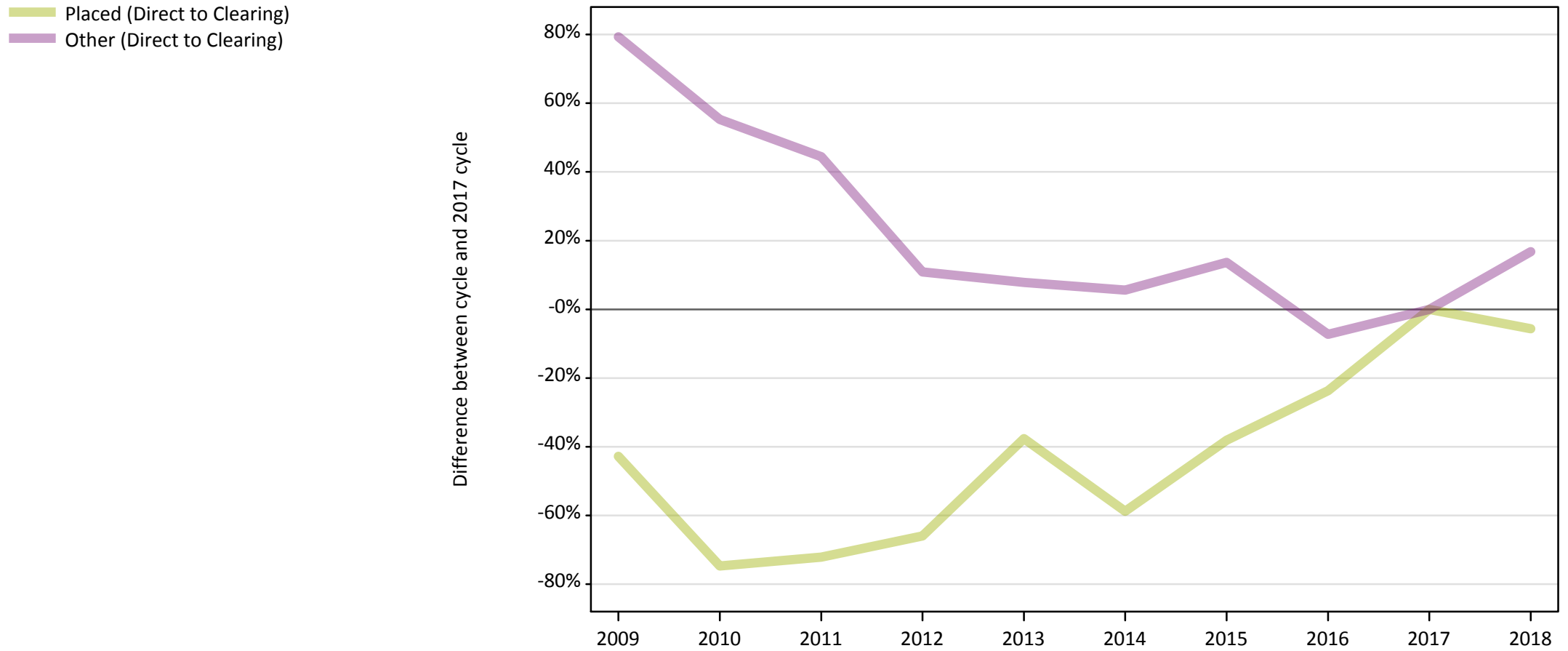
Applicants in unplaced states: difference between cycle and 2017 cycle

Applicant type	Status	2009	2010	2011	2012	2013	2014	2015	2016	2017	2018
Main scheme	Holding offer	-27%	-5%	2%	-9%	-4%	-1%	8%	6%	0%	9%
	Free to be placed in Clearing	-17%	19%	22%	6%	6%	8%	10%	10%	0%	-1%

Note: The percentage change is not recorded in the above table for groups with fewer than 10 unplaced applicants in that cycle or in the 2017 cycle.

A.15 Direct to Clearing applicants from the EU - excluding UK: 1 day after A level results day

Direct to Clearing: difference between cycle and 2017 cycle



Note: The percentage change is not plotted in the above chart for groups with fewer than 30 placed applicants in any one cycle.

A.16 Direct to Clearing applicants from the EU - excluding UK: 1 day after A level results day

Direct to Clearing 1 day after A level results day

Applicant type	Status	2009	2010	2011	2012	2013	2014	2015	2016	2017	2018
Direct to Clearing	Placed (Direct to Clearing)	110	50	50	70	120	80	120	150	190	180
	Other (Direct to Clearing)	640	560	520	400	390	380	410	330	360	420

A.17 Direct to Clearing applicants from the EU - excluding UK: 1 day after A level results day

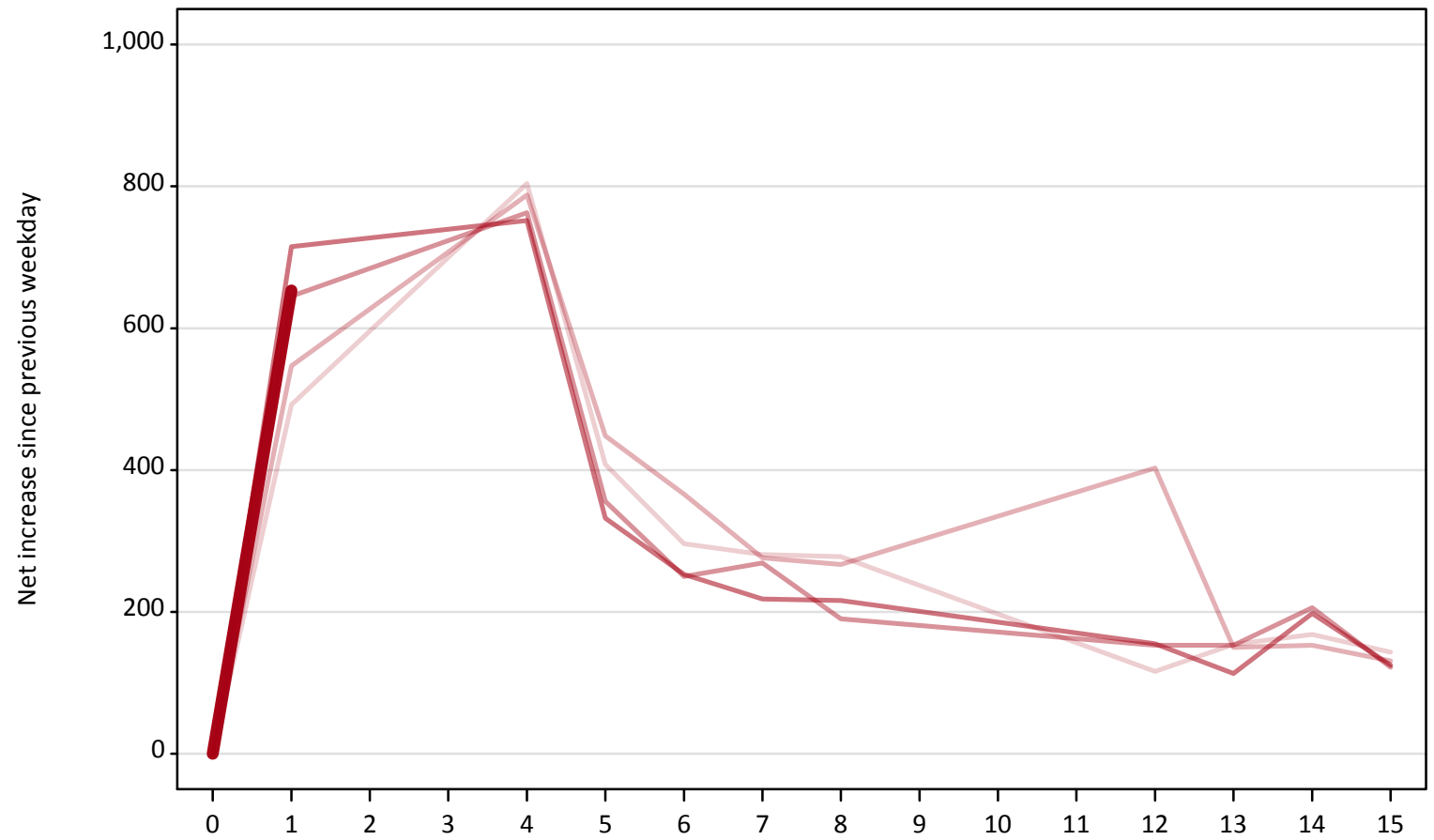
Direct to Clearing: difference between cycle and 2017 cycle

Applicant type	Status	2009	2010	2011	2012	2013	2014	2015	2016	2017	2018
Direct to Clearing	Placed (Direct to Clearing)	-43%	-75%	-72%	-66%	-38%	-59%	-38%	-24%	0%	-6%
	Other (Direct to Clearing)	79%	55%	44%	11%	8%	6%	14%	-7%	0%	17%

Note: The percentage change is not recorded in the above table for groups with fewer than 10 placed applicants in that cycle or in the 2017 cycle.

A.18 All Placed: Daily net change (from the EU - excluding UK)
Net increase since previous weekday (2018 cycle up to 1 day after A level results day)

- 2014
- 2015
- 2016
- 2017
- 2018**

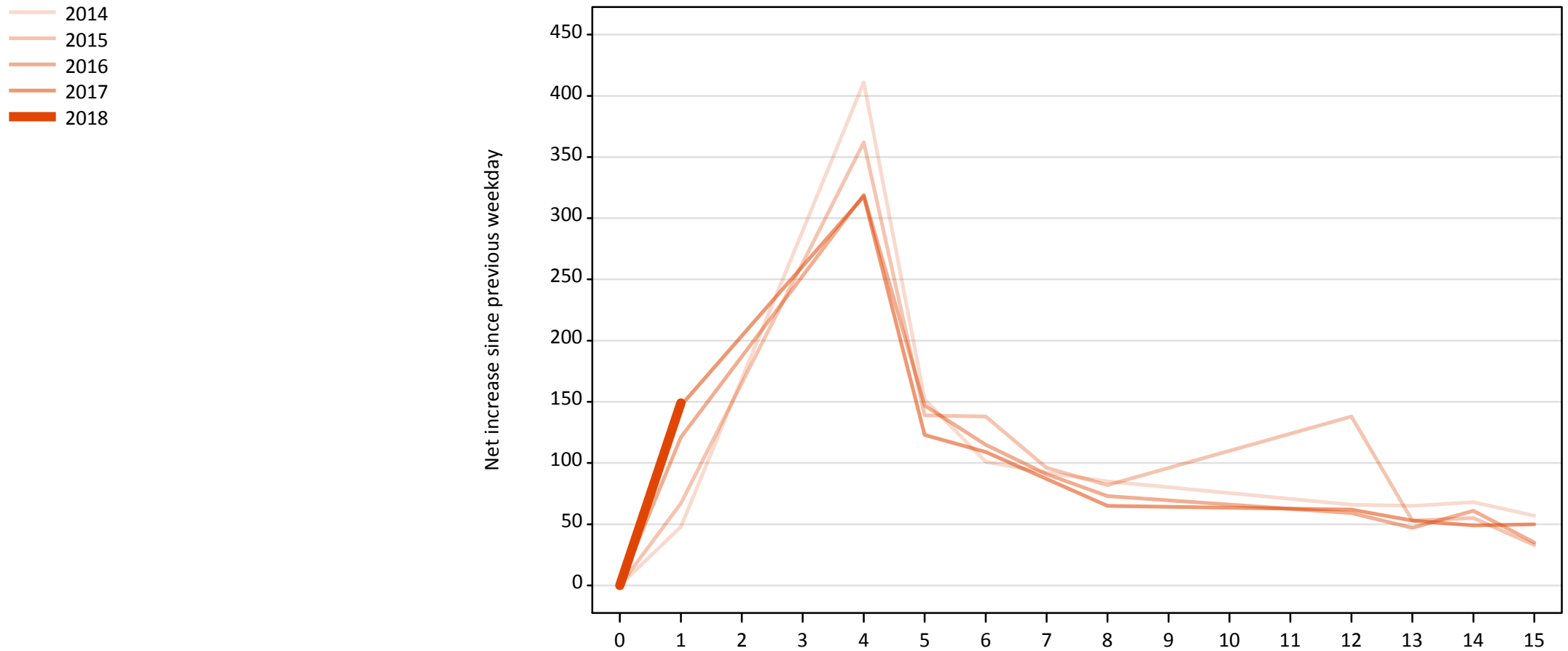


A.19 All Placed: Daily net change (from the EU - excluding UK)

Net increase since previous weekday (2018 cycle up to 1 day after A level results day)

Applicant status, days since A level results day		2014	2015	2016	2017	2018
All Placed	0	0	0	0	0	0
	1	490	550	650	720	650
	4	800	790	760	750	
	5	410	450	360	330	
	6	300	370	250	250	
	7	280	280	270	220	
	8	280	270	190	220	
	12	120	400	150	160	
	13	150	150	150	110	
	14	170	150	210	200	
	15	140	130	120	130	

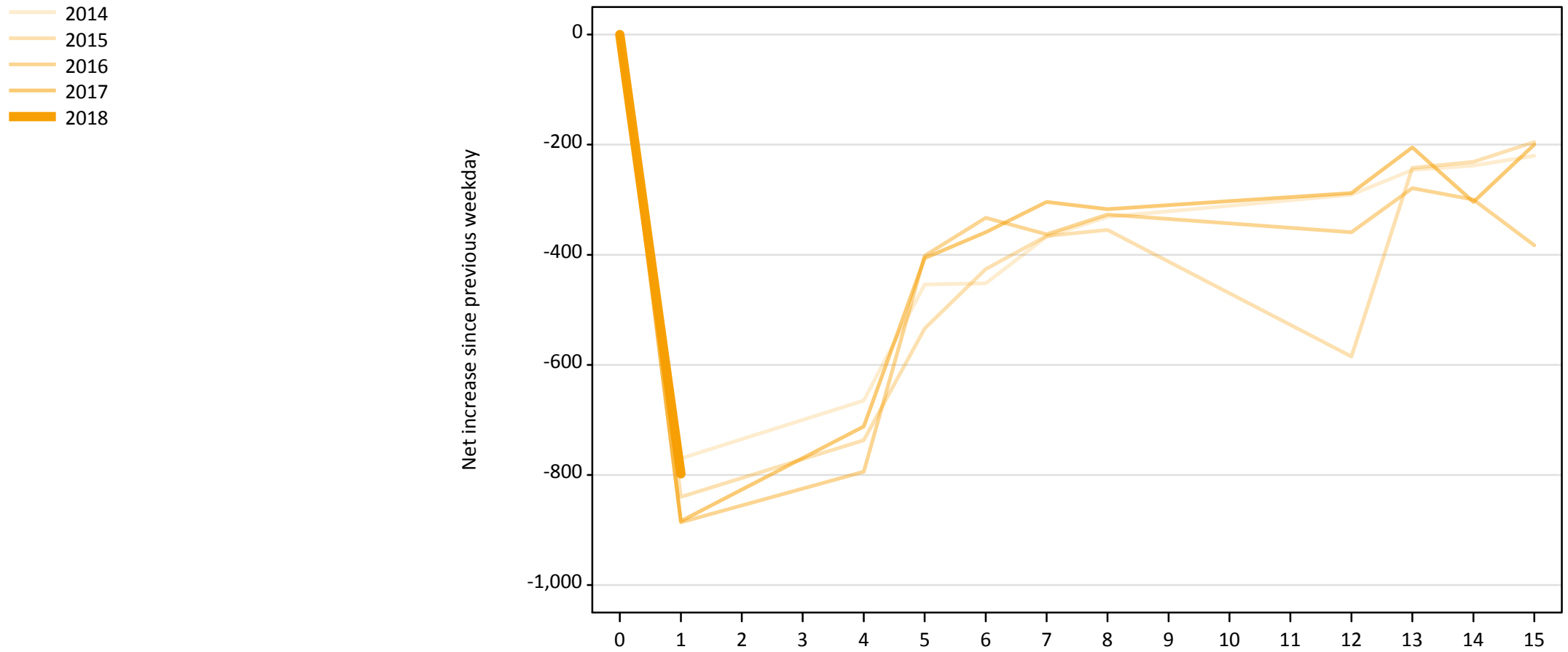
A.20 Placed through Clearing only: Daily net change (from the EU - excluding UK)
Net increase since previous weekday (2018 cycle up to 1 day after A level results day)



A.21 Placed through Clearing only: Daily net change (from the EU - excluding UK)
 Net increase since previous weekday (2018 cycle up to 1 day after A level results day)

Applicant status, days since A level results day		2014	2015	2016	2017	2018
Placed through Clearing only	0	0	0	0	0	0
	1	50	70	120	150	150
	4	410	360	320	320	
	5	150	140	150	120	
	6	100	140	120	110	
	7	90	100	90	90	
	8	90	80	70	70	
	12	70	140	60	60	
	13	70	50	50	50	
	14	70	60	60	50	
	15	60	30	40	50	

A.22 Holding Offer: Daily net change (from the EU - excluding UK)
Net increase since previous weekday (2018 cycle up to 1 day after A level results day)



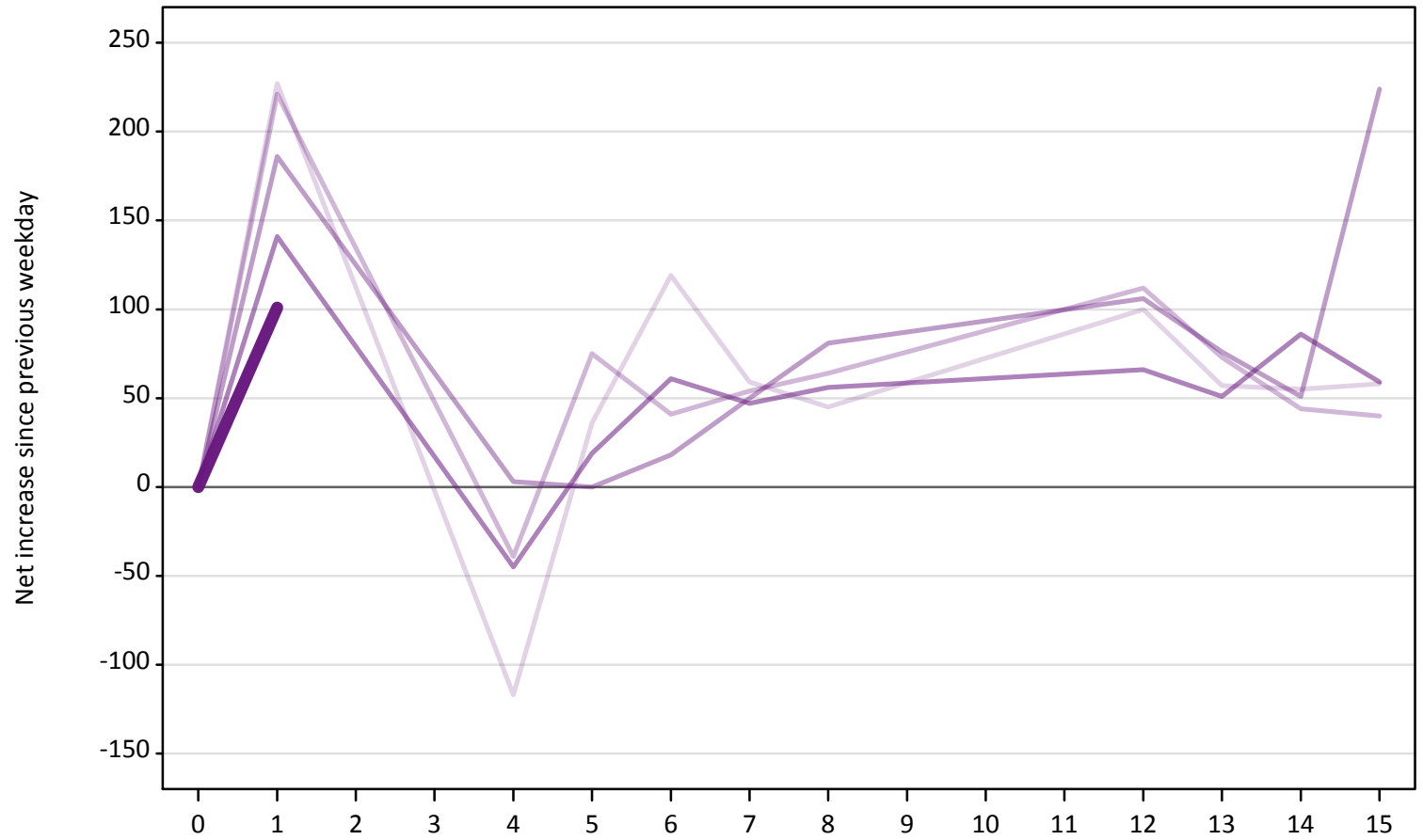
A.23 Holding Offer: Daily net change (from the EU - excluding UK)

Net increase since previous weekday (2018 cycle up to 1 day after A level results day)

Applicant status, days since A level results day	2014	2015	2016	2017	2018	
Holding Offer	0	0	0	0	0	
	1	-770	-840	-890	-880	-800
	4	-670	-740	-790	-710	
	5	-450	-530	-400	-410	
	6	-450	-430	-330	-360	
	7	-370	-370	-360	-300	
	8	-330	-360	-330	-320	
	12	-290	-590	-360	-290	
	13	-250	-240	-280	-210	
	14	-240	-230	-300	-300	
	15	-220	-200	-380	-200	

A.24 Free to be placed in Clearing: Daily net change (from the EU - excluding UK)
Net increase since previous weekday (2018 cycle up to 1 day after A level results day)

- 2014
- 2015
- 2016
- 2017
- 2018



A.25 Free to be placed in Clearing: Daily net change (from the EU - excluding UK)
 Net increase since previous weekday (2018 cycle up to 1 day after A level results day)

Applicant status, days since A level results day		2014	2015	2016	2017	2018
Free to be placed in Clearing	0	0	0	0	0	0
	1	230	220	190	140	100
	4	-120	-40	0	-50	
	5	40	80	0	20	
	6	120	40	20	60	
	7	60	50	50	50	
	8	50	60	80	60	
	12	100	110	110	70	
	13	60	70	80	50	
	14	60	40	50	90	
	15	60	40	220	60	