

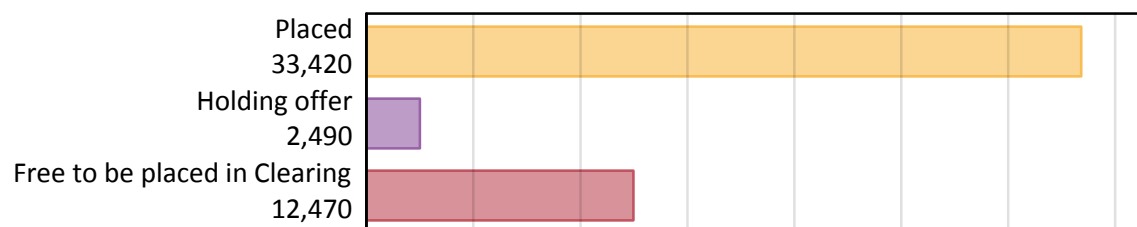
Daily Clearing Analysis: Overview

Analysis at 00:05 on Friday 17 August 2018 (1 day after A level results day)

A.1 Applicants by type and status from Scotland, 2018 cycle

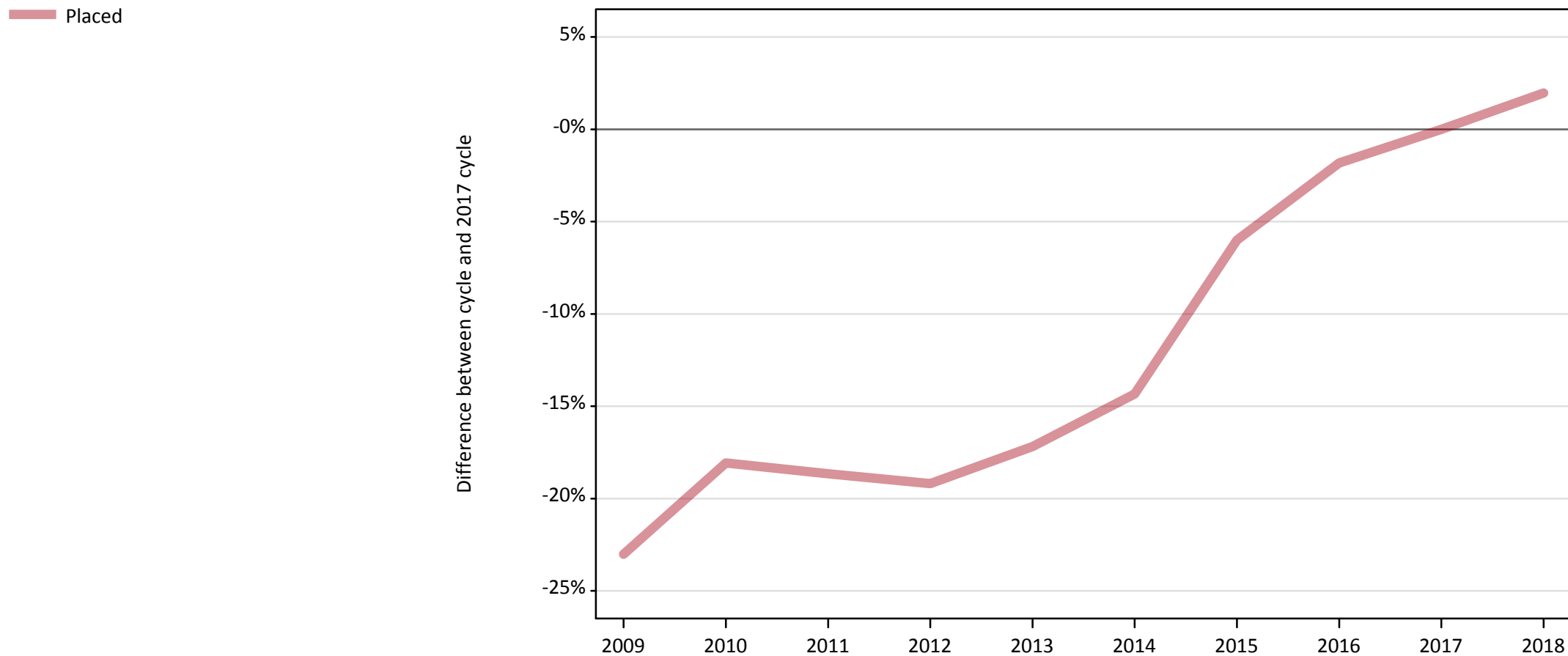
Applicant type	Status	2018
Main scheme	Placed (Clearing)	680
	Placed (Adjustment)	0
	Placed (Firm)	30,630
	Placed (Insurance)	1,290
	Placed (Other)	630
	Holding offer	2,490
	Free to be placed in Clearing	12,470
Direct to Clearing	Placed (Direct to Clearing)	200
	Other (Direct to Clearing)	360
All applicants	Placed	33,420

A.2 Summary of applicants who are placed, holding offers or free to be placed in Clearing (Scotland)



A.3 All placed applicants from Scotland: 1 day after A level results day

All placed applicants: difference between cycle and 2017 cycle



Note: The percentage change is not plotted in the above chart for groups with fewer than 30 placed applicants in any one cycle.

A.4 All placed applicants from Scotland: 1 day after A level results day

All placed applicants: applicants at 1 day after A level results day

Applicant type	Status	2009	2010	2011	2012	2013	2014	2015	2016	2017	2018
All applicants	Placed	25,230	26,850	26,660	26,490	27,150	28,080	30,810	32,180	32,780	33,420

A.5 All placed applicants from Scotland: 1 day after A level results day

All placed applicants: difference between cycle and 2017 cycle

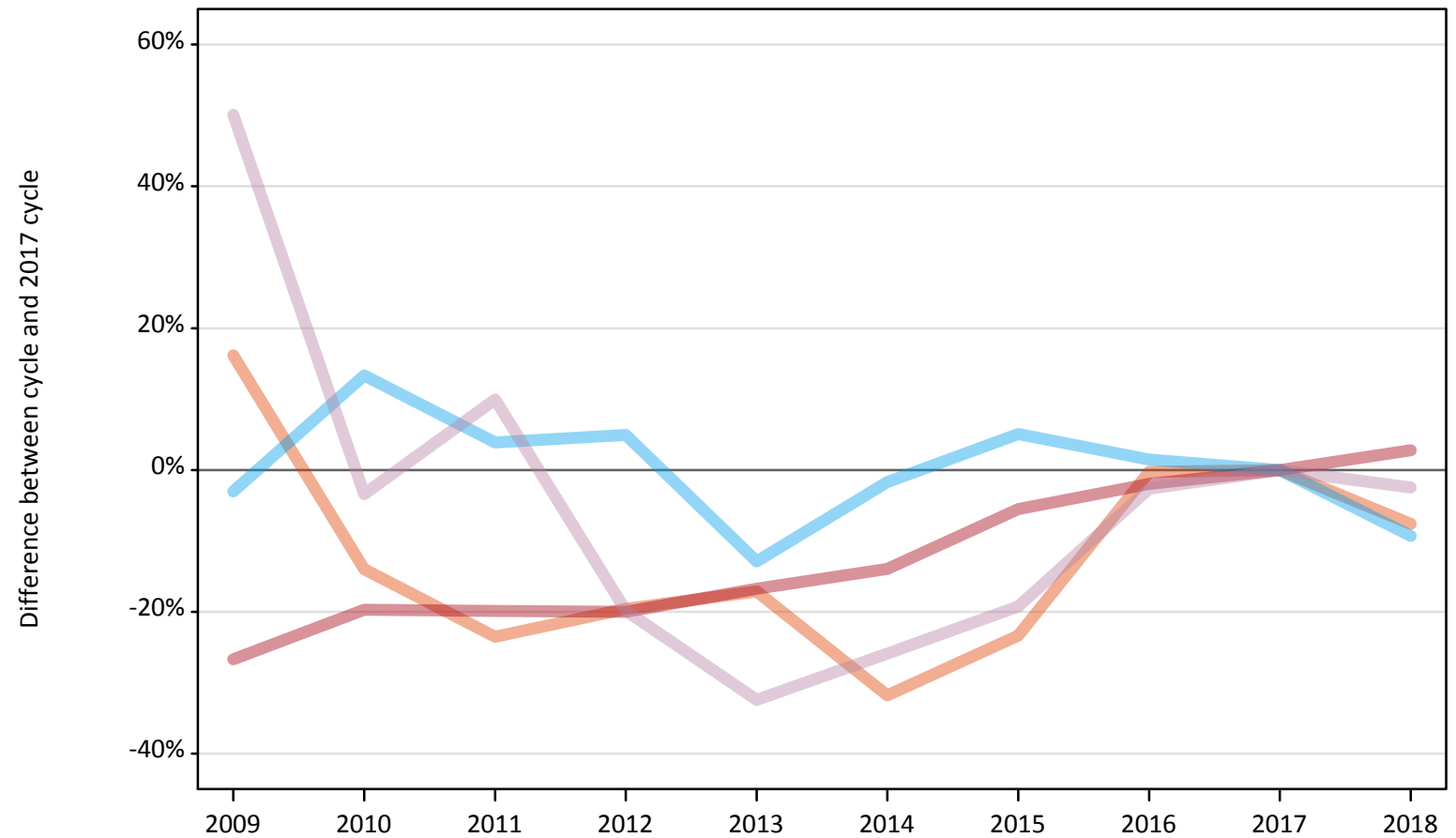
Applicant type	Status	2009	2010	2011	2012	2013	2014	2015	2016	2017	2018
All applicants	Placed	-23%	-18%	-19%	-19%	-17%	-14%	-6%	-2%	0%	2%

Note: The percentage change is not recorded in the above table for groups with fewer than 10 placed applicants in that cycle or in the 2017 cycle.

A.6 Placed main scheme applicants from Scotland: 1 day after A level results day

All Main scheme placed routes (excluding Adjustment): difference between cycle and 2017 cycle

- Placed (Clearing)
- Placed (Firm)
- Placed (Insurance)
- Placed (Other)



Note: The percentage change is not plotted in the above chart for groups with fewer than 30 placed applicants in any one cycle.

A.7 Placed main scheme applicants from Scotland: 1 day after A level results day

All Main scheme placed routes (excluding Adjustment): applicants at 1 day after A level results day

Applicant type	Status	2009	2010	2011	2012	2013	2014	2015	2016	2017	2018
Main scheme	Placed (Clearing)	860	630	560	590	610	500	560	730	740	680
	Placed (Firm)	21,840	23,920	23,860	23,830	24,800	25,640	28,150	29,210	29,790	30,630
	Placed (Insurance)	1,380	1,610	1,470	1,490	1,240	1,390	1,490	1,440	1,420	1,290
	Placed (Other)	970	620	710	520	440	480	520	630	650	630

A.8 Placed main scheme applicants from Scotland: 1 day after A level results day

All Main scheme placed routes (excluding Adjustment): difference between cycle and 2017 cycle

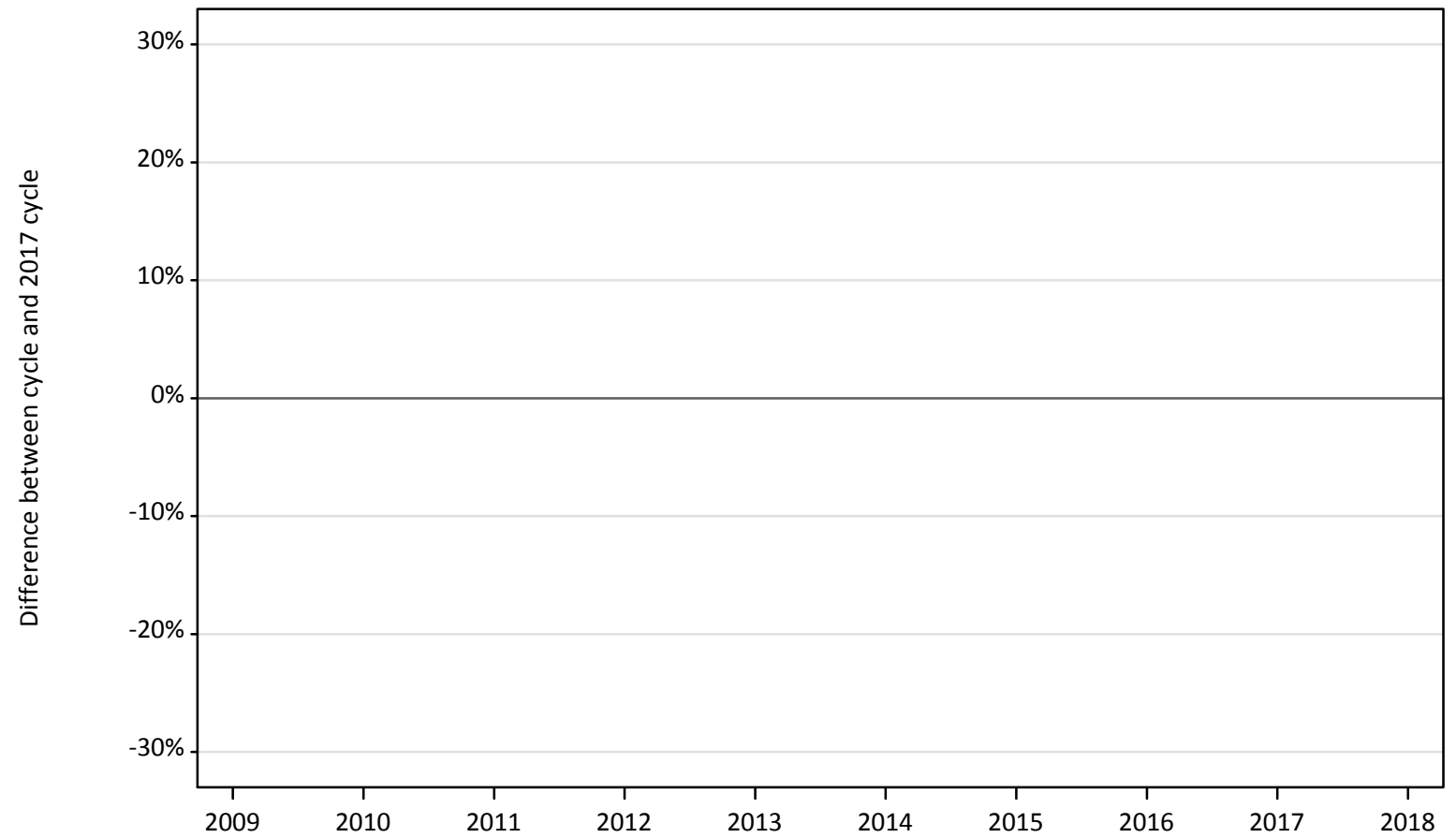
Applicant type	Status	2009	2010	2011	2012	2013	2014	2015	2016	2017	2018
Main scheme	Placed (Clearing)	16%	-14%	-24%	-20%	-17%	-32%	-23%	-0%	0%	-8%
	Placed (Firm)	-27%	-20%	-20%	-20%	-17%	-14%	-6%	-2%	0%	3%
	Placed (Insurance)	-3%	13%	4%	5%	-13%	-2%	5%	1%	0%	-9%
	Placed (Other)	50%	-3%	10%	-20%	-32%	-26%	-19%	-3%	0%	-2%

Note: The percentage change is not recorded in the above table for groups with fewer than 10 placed applicants in that cycle or in the 2017 cycle.

A.9 Main scheme applicants placed through adjustment: 1 day after A level results day

Placed through adjustment: difference between cycle and 2017 cycle

Placed (Adjustment)



Note: The percentage change is not plotted in the above chart for groups with fewer than 30 placed applicants in any one cycle.

A.10 Main scheme applicants placed through adjustment: 1 day after A level results day

Placed through adjustment: applicants at 1 day after A level results day

Applicant type	Status	2009	2010	2011	2012	2013	2014	2015	2016	2017	2018
Main scheme	Placed (Adjustment)	0	0	0	10	0	10	0	0	0	0

A.11 Main scheme applicants placed through adjustment: 1 day after A level results day

Placed through adjustment: difference between cycle and 2017 cycle

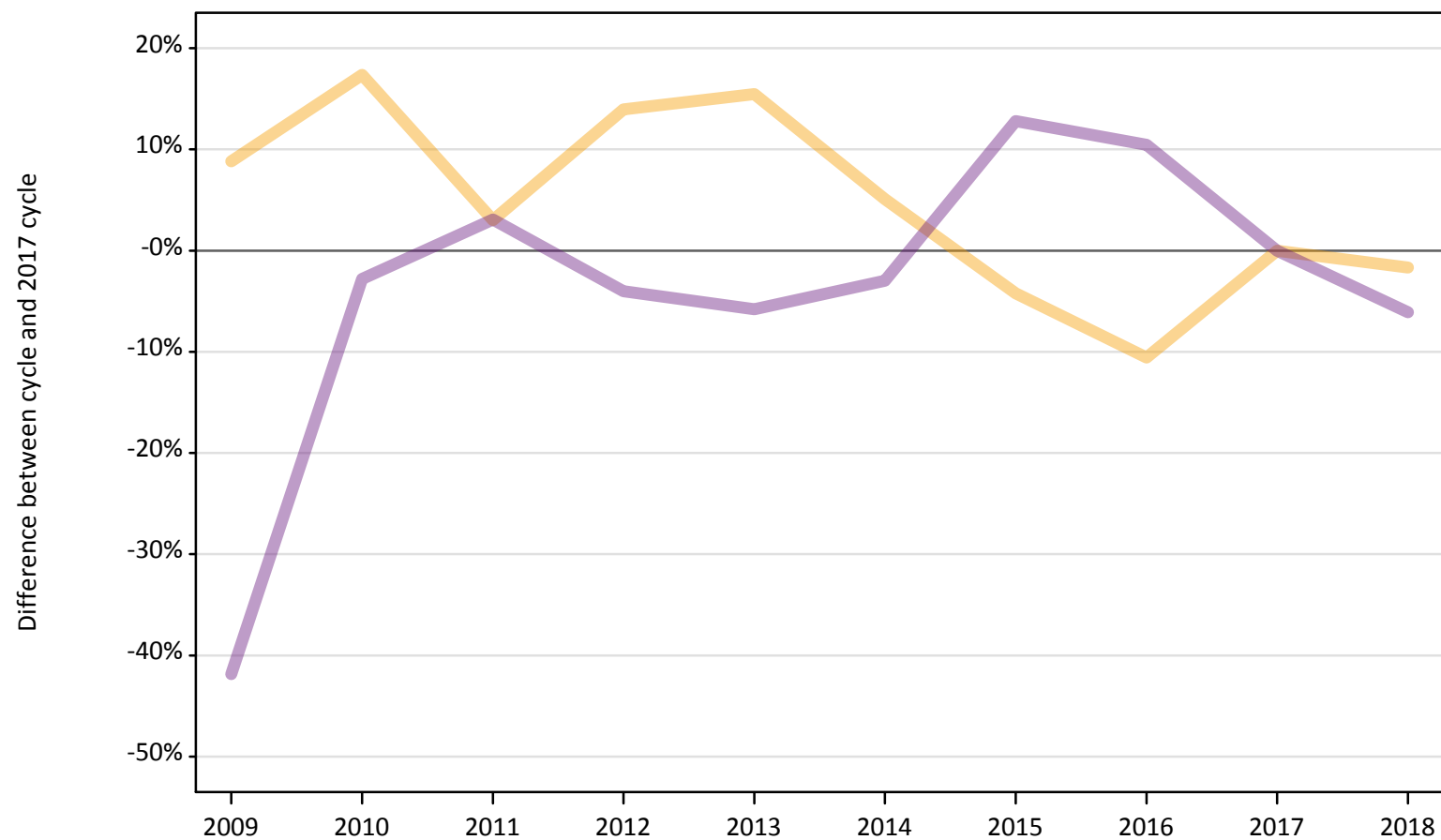
Applicant type	Status	2009	2010	2011	2012	2013	2014	2015	2016	2017	2018
Main scheme	Placed (Adjustment)										

Note: The percentage change is not recorded in the above table for groups with fewer than 10 placed applicants in that cycle or in the 2017 cycle.

A.12 Main scheme applicants not currently placed from Scotland: 1 day after A level results day

Applicants in unplaced states: difference between cycle and 2017 cycle

— Holding offer
— Free to be placed in Clearing



Note: The percentage change is not plotted in the above chart for groups with fewer than 30 unplaced applicants in any one cycle.

A.13 Main scheme applicants not currently placed from Scotland: 1 day after A level results day

Applicants in unplaced states: applicants at 1 day after A level results day

Applicant type	Status	2009	2010	2011	2012	2013	2014	2015	2016	2017	2018
Main scheme	Holding offer	2,750	2,970	2,600	2,880	2,920	2,660	2,420	2,260	2,530	2,490
	Free to be placed in Clearing	7,720	12,910	13,690	12,750	12,510	12,890	14,980	14,670	13,280	12,470

A.14 Main scheme applicants not currently placed from Scotland: 1 day after A level results day

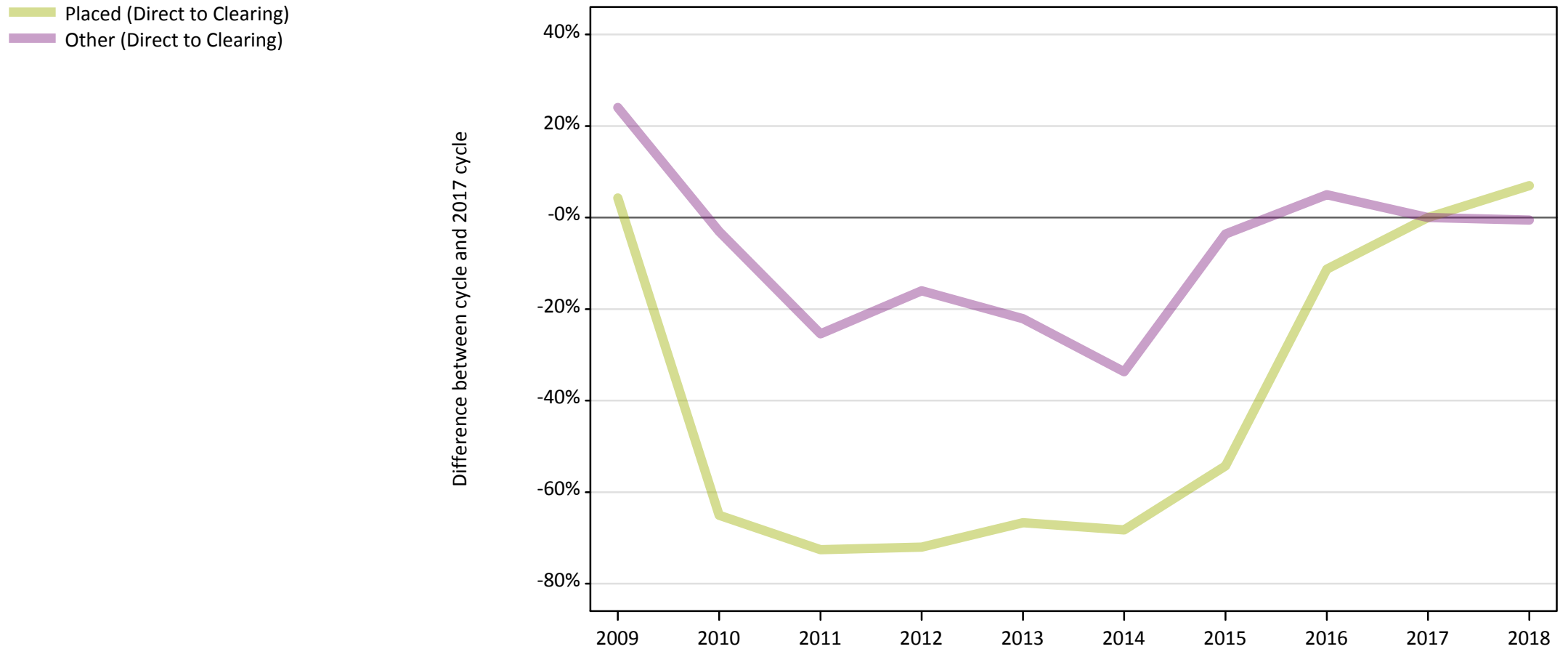
Applicants in unplaced states: difference between cycle and 2017 cycle

Applicant type	Status	2009	2010	2011	2012	2013	2014	2015	2016	2017	2018
Main scheme	Holding offer	9%	17%	3%	14%	15%	5%	-4%	-11%	0%	-2%
	Free to be placed in Clearing	-42%	-3%	3%	-4%	-6%	-3%	13%	10%	0%	-6%

Note: The percentage change is not recorded in the above table for groups with fewer than 10 unplaced applicants in that cycle or in the 2017 cycle.

A.15 Direct to Clearing applicants from Scotland: 1 day after A level results day

Direct to Clearing: difference between cycle and 2017 cycle



Note: The percentage change is not plotted in the above chart for groups with fewer than 30 placed applicants in any one cycle.

A.16 Direct to Clearing applicants from Scotland: 1 day after A level results day

Direct to Clearing 1 day after A level results day

Applicant type	Status	2009	2010	2011	2012	2013	2014	2015	2016	2017	2018
Direct to Clearing	Placed (Direct to Clearing)	190	70	50	50	60	60	90	170	190	200
	Other (Direct to Clearing)	450	350	270	300	280	240	350	380	360	360

A.17 Direct to Clearing applicants from Scotland: 1 day after A level results day

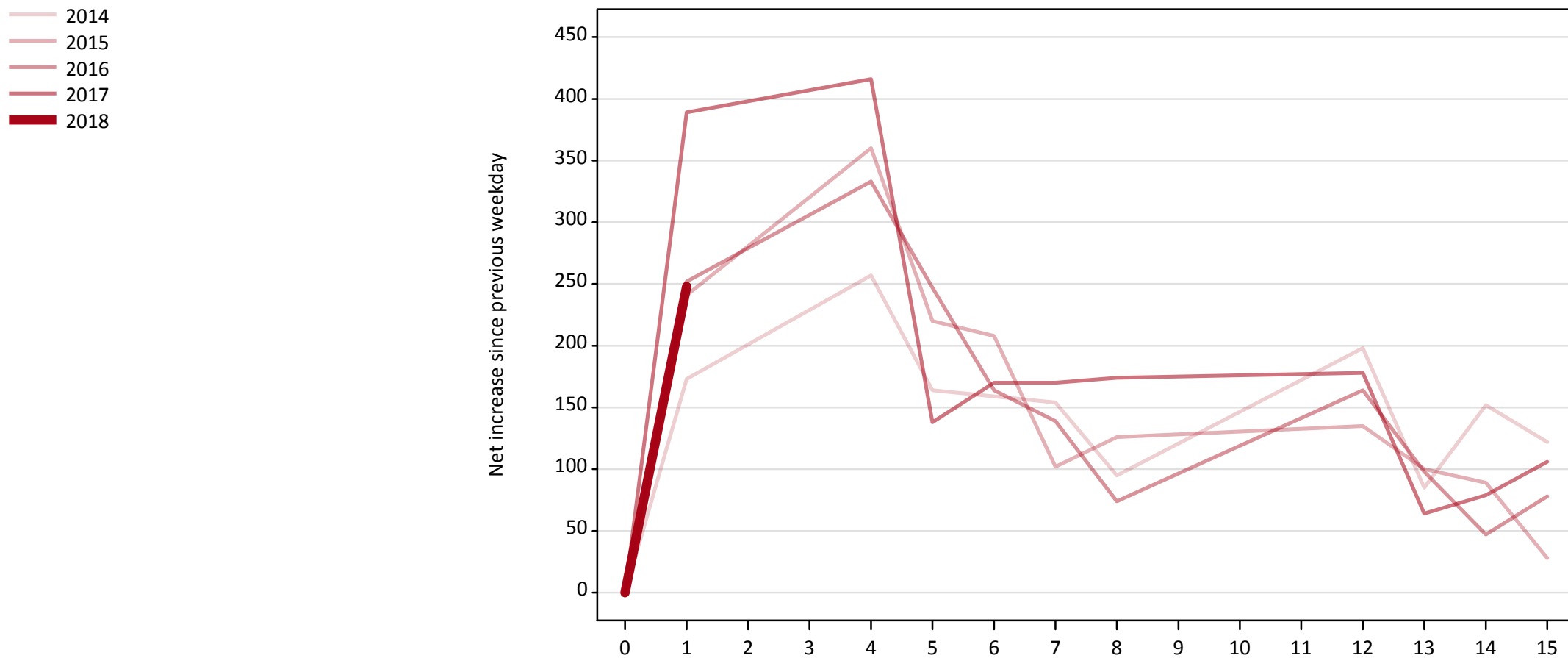
Direct to Clearing: difference between cycle and 2017 cycle

Applicant type	Status	2009	2010	2011	2012	2013	2014	2015	2016	2017	2018
Direct to Clearing	Placed (Direct to Clearing)	4%	-65%	-73%	-72%	-67%	-68%	-54%	-11%	0%	7%
	Other (Direct to Clearing)	24%	-3%	-25%	-16%	-22%	-34%	-4%	5%	0%	-1%

Note: The percentage change is not recorded in the above table for groups with fewer than 10 placed applicants in that cycle or in the 2017 cycle.

A.18 All Placed: Daily net change (from Scotland)

Net increase since previous weekday (2018 cycle up to 1 day after A level results day)

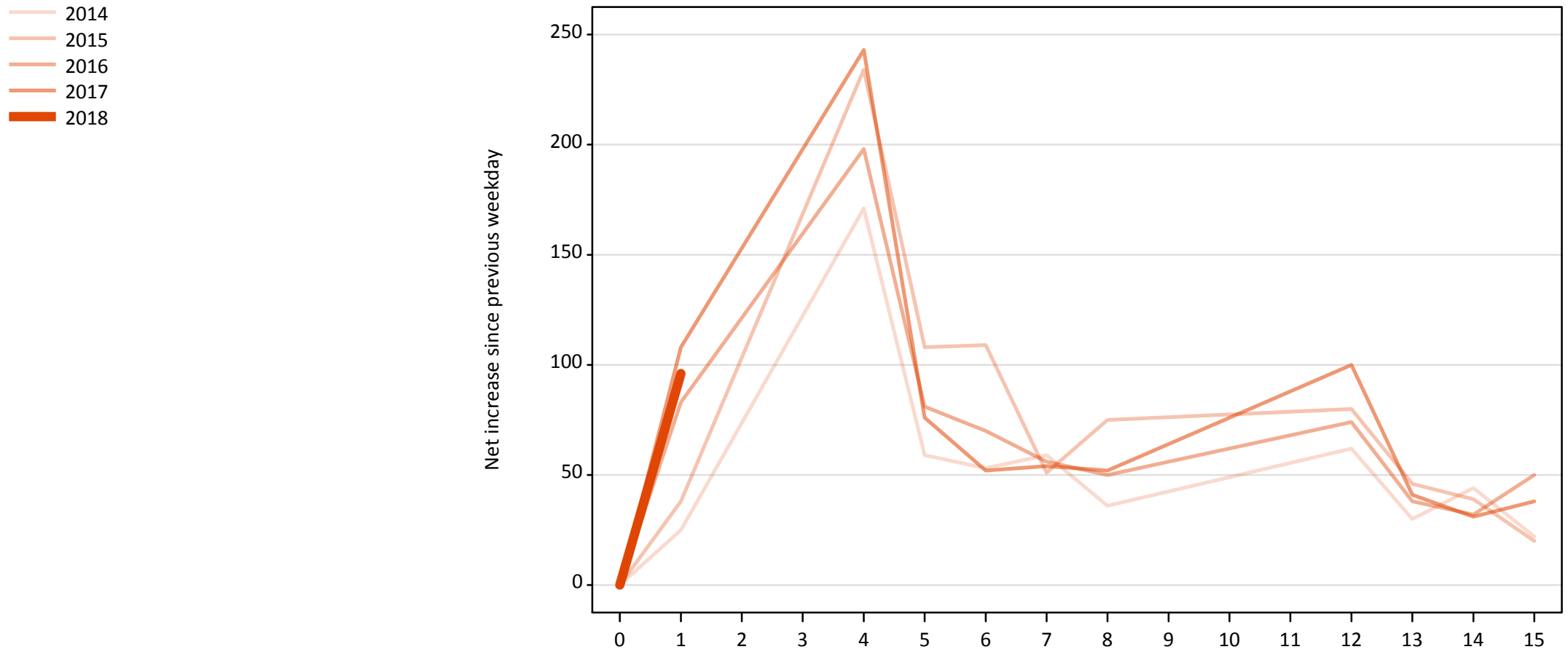


A.19 All Placed: Daily net change (from Scotland)

Net increase since previous weekday (2018 cycle up to 1 day after A level results day)

Applicant status, days since A level results day	2014	2015	2016	2017	2018	
All Placed	0	0	0	0	0	
	1	170	240	250	390	250
	4	260	360	330	420	
	5	160	220	250	140	
	6	160	210	160	170	
	7	150	100	140	170	
	8	100	130	70	170	
	12	200	140	160	180	
	13	90	100	100	60	
	14	150	90	50	80	
	15	120	30	80	110	

A.20 Placed through Clearing only: Daily net change (from Scotland)
Net increase since previous weekday (2018 cycle up to 1 day after A level results day)



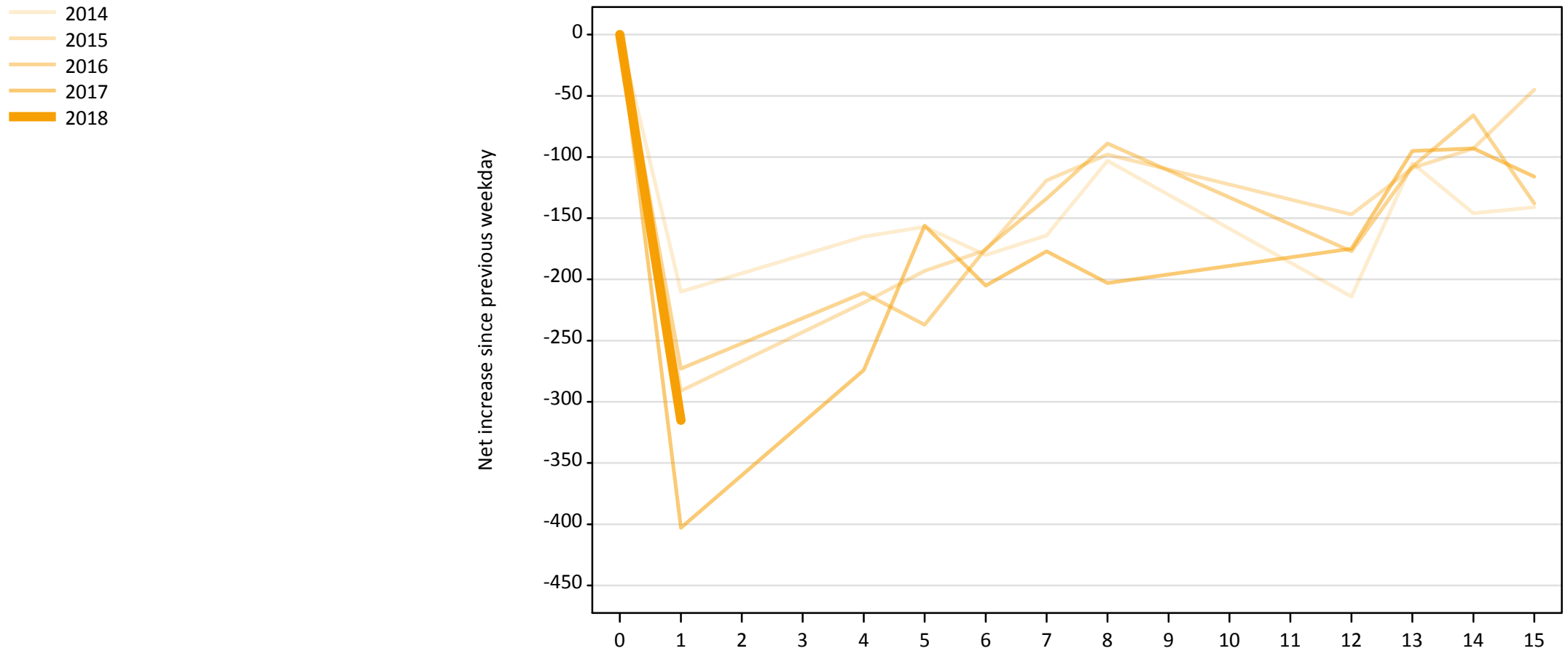
A.21 Placed through Clearing only: Daily net change (from Scotland)

Net increase since previous weekday (2018 cycle up to 1 day after A level results day)

Applicant status, days since A level results day		2014	2015	2016	2017	2018
Placed through Clearing only	0	0	0	0	0	0
	1	30	40	80	110	100
	4	170	230	200	240	
	5	60	110	80	80	
	6	50	110	70	50	
	7	60	50	60	50	
	8	40	80	50	50	
	12	60	80	70	100	
	13	30	50	40	40	
	14	40	40	30	30	
	15	20	20	50	40	

A.22 Holding Offer: Daily net change (from Scotland)

Net increase since previous weekday (2018 cycle up to 1 day after A level results day)



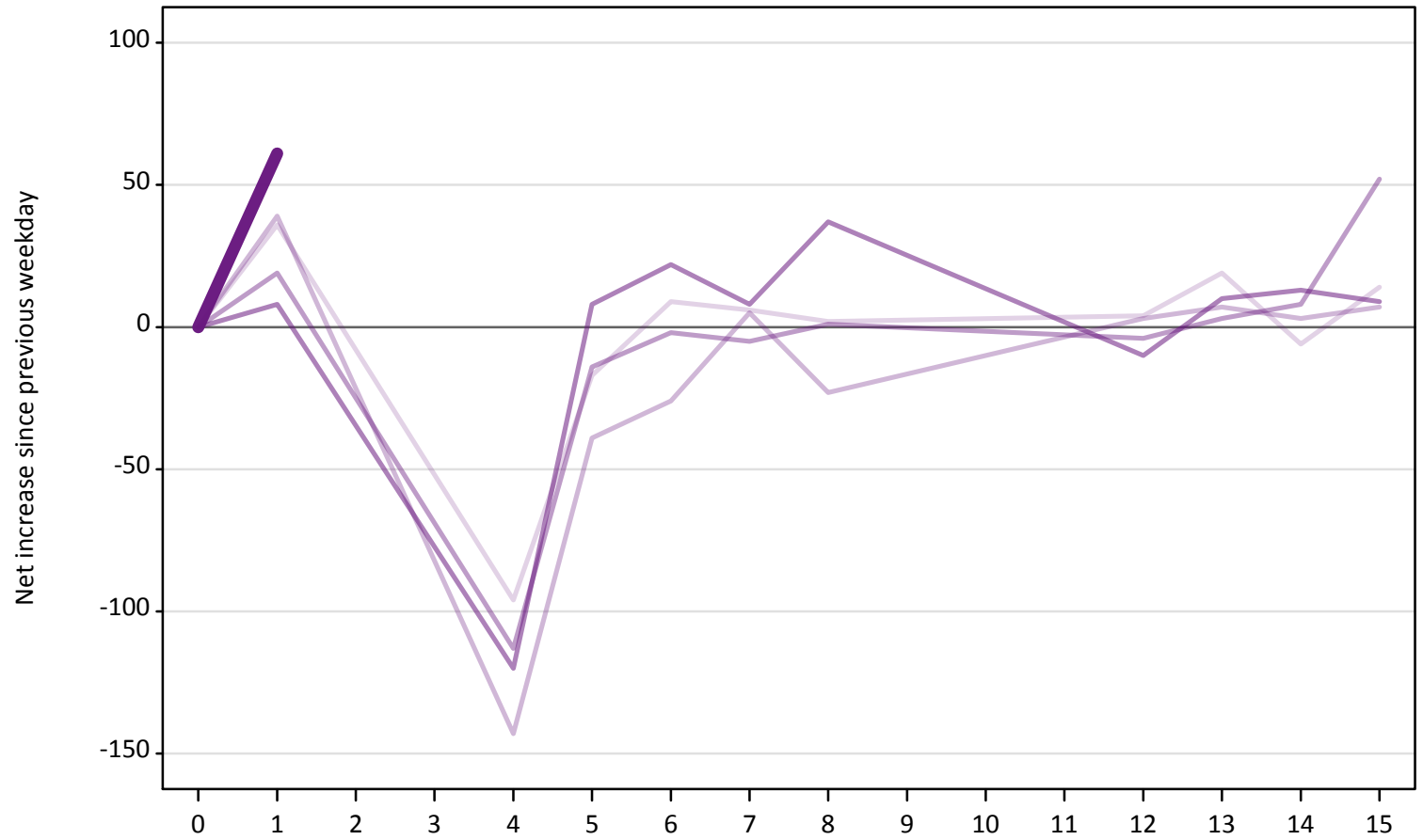
A.23 Holding Offer: Daily net change (from Scotland)

Net increase since previous weekday (2018 cycle up to 1 day after A level results day)

Applicant status, days since A level results day		2014	2015	2016	2017	2018
Holding Offer	0	0	0	0	0	0
	1	-210	-290	-270	-400	-320
	4	-170	-220	-210	-270	
	5	-160	-190	-240	-160	
	6	-180	-180	-180	-210	
	7	-160	-120	-130	-180	
	8	-100	-100	-90	-200	
	12	-210	-150	-180	-180	
	13	-110	-110	-110	-100	
	14	-150	-90	-70	-90	
	15	-140	-50	-140	-120	

A.24 Free to be placed in Clearing: Daily net change (from Scotland)
Net increase since previous weekday (2018 cycle up to 1 day after A level results day)

- 2014
- 2015
- 2016
- 2017
- 2018



A.25 Free to be placed in Clearing: Daily net change (from Scotland)

Net increase since previous weekday (2018 cycle up to 1 day after A level results day)

Applicant status, days since A level results day		2014	2015	2016	2017	2018
Free to be placed in Clearing	0	0	0	0	0	0
	1	40	40	20	10	60
	4	-100	-140	-110	-120	
	5	-20	-40	-10	10	
	6	10	-30	0	20	
	7	10	10	-10	10	
	8	0	-20	0	40	
	12	0	0	0	-10	
	13	20	10	0	10	
	14	-10	0	10	10	
	15	10	10	50	10	