

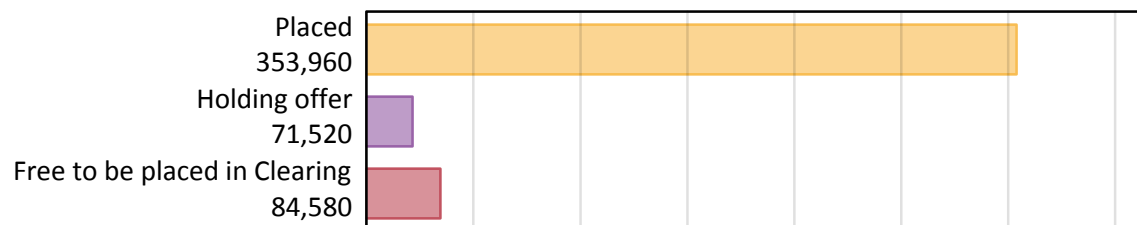
Daily Clearing Analysis: Overview

Analysis at 00:05 on Thursday 16 August 2018 (A level results day)

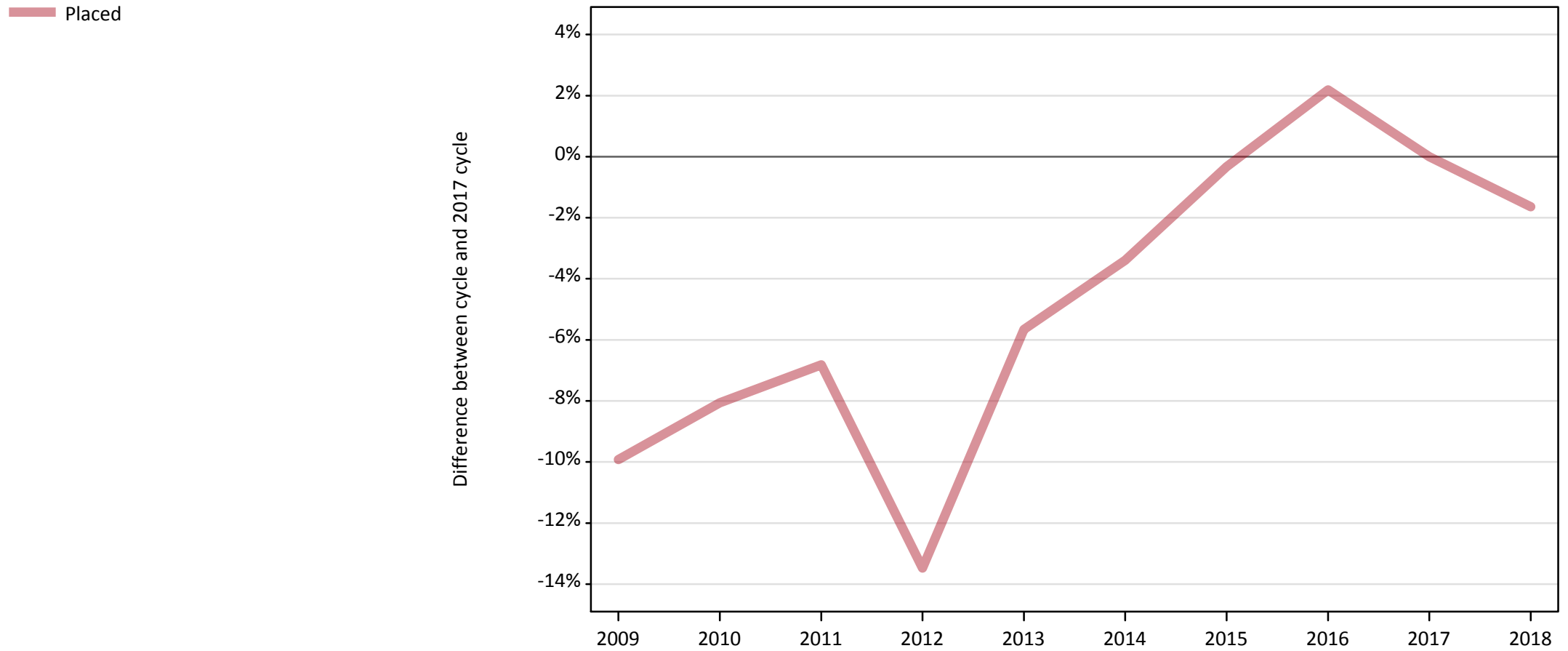
A.1 Applicants by type and status from the UK, 2018 cycle

Applicant type	Status	2018
Main scheme	Placed (Clearing)	2,940
	Placed (Adjustment)	0
	Placed (Firm)	314,370
	Placed (Insurance)	23,840
	Placed (Other)	9,820
	Holding offer	71,520
	Free to be placed in Clearing	84,580
Direct to Clearing	Placed (Direct to Clearing)	2,990
	Other (Direct to Clearing)	6,820
All applicants	Placed	353,960

A.2 Summary of applicants who are placed, holding offers or free to be placed in Clearing (the UK)



A.3 All placed applicants from the UK: A level results day
All placed applicants: difference between cycle and 2017 cycle



Note: The percentage change is not plotted in the above chart for groups with fewer than 30 placed applicants in any one cycle.

A.4 All placed applicants from the UK: A level results day

All placed applicants: applicants at A level results day

Applicant type	Status	2009	2010	2011	2012	2013	2014	2015	2016	2017	2018
All applicants	Placed	324,160	330,850	335,330	311,390	339,500	347,650	358,680	367,730	359,860	353,960

A.5 All placed applicants from the UK: A level results day

All placed applicants: difference between cycle and 2017 cycle

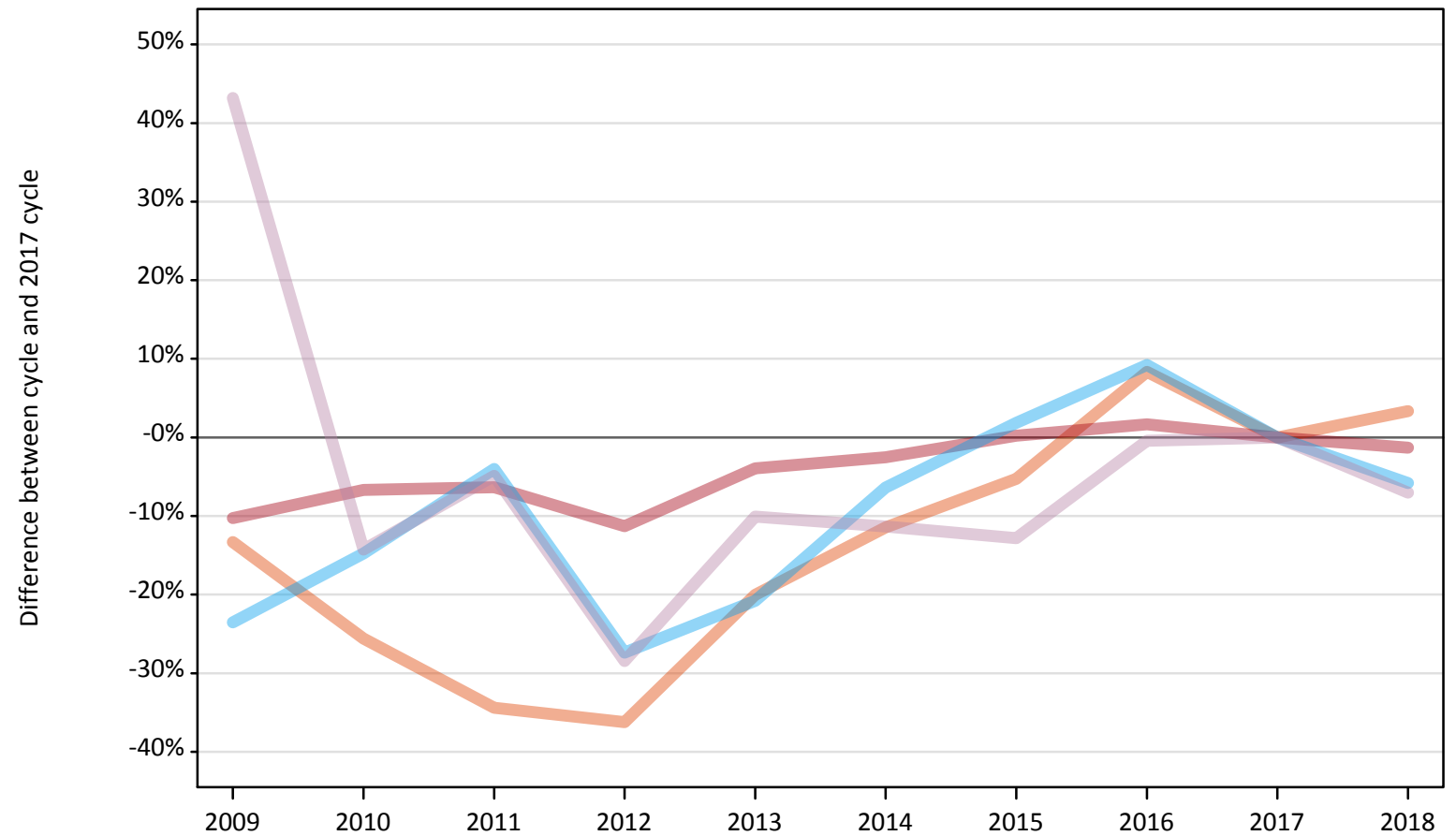
Applicant type	Status	2009	2010	2011	2012	2013	2014	2015	2016	2017	2018
All applicants	Placed	-10%	-8%	-7%	-13%	-6%	-3%	-0%	2%	0%	-2%

Note: The percentage change is not recorded in the above table for groups with fewer than 10 placed applicants in that cycle or in the 2017 cycle.

A.6 Placed main scheme applicants from the UK: A level results day

All Main scheme placed routes (excluding Adjustment): difference between cycle and 2017 cycle

- Placed (Clearing)
- Placed (Firm)
- Placed (Insurance)
- Placed (Other)



Note: The percentage change is not plotted in the above chart for groups with fewer than 30 placed applicants in any one cycle.

A.7 Placed main scheme applicants from the UK: A level results day

All Main scheme placed routes (excluding Adjustment): applicants at A level results day

Applicant type	Status	2009	2010	2011	2012	2013	2014	2015	2016	2017	2018
Main scheme	Placed (Clearing)	2,470	2,120	1,870	1,820	2,280	2,520	2,700	3,090	2,850	2,940
	Placed (Firm)	285,880	297,290	298,360	282,610	306,010	310,590	319,260	323,950	318,590	314,370
	Placed (Insurance)	19,350	21,580	24,290	18,380	20,040	23,700	25,780	27,640	25,310	23,840
	Placed (Other)	15,120	9,060	10,050	7,560	9,500	9,360	9,210	10,520	10,560	9,820

A.8 Placed main scheme applicants from the UK: A level results day

All Main scheme placed routes (excluding Adjustment): difference between cycle and 2017 cycle

Applicant type	Status	2009	2010	2011	2012	2013	2014	2015	2016	2017	2018
Main scheme	Placed (Clearing)	-13%	-26%	-34%	-36%	-20%	-11%	-5%	8%	0%	3%
	Placed (Firm)	-10%	-7%	-6%	-11%	-4%	-3%	0%	2%	0%	-1%
	Placed (Insurance)	-24%	-15%	-4%	-27%	-21%	-6%	2%	9%	0%	-6%
	Placed (Other)	43%	-14%	-5%	-28%	-10%	-11%	-13%	-0%	0%	-7%

Note: The percentage change is not recorded in the above table for groups with fewer than 10 placed applicants in that cycle or in the 2017 cycle.

A.9 Main scheme applicants placed through adjustment: A level results day

Placed through adjustment: difference between cycle and 2017 cycle

[Analysis on placed by adjustment available from 18 August 2018]

A.10 Main scheme applicants placed through adjustment: A level results day

Placed through adjustment: applicants at A level results day

[Analysis on placed by adjustment available from 18 August 2018]

A.11 Main scheme applicants placed through adjustment: A level results day

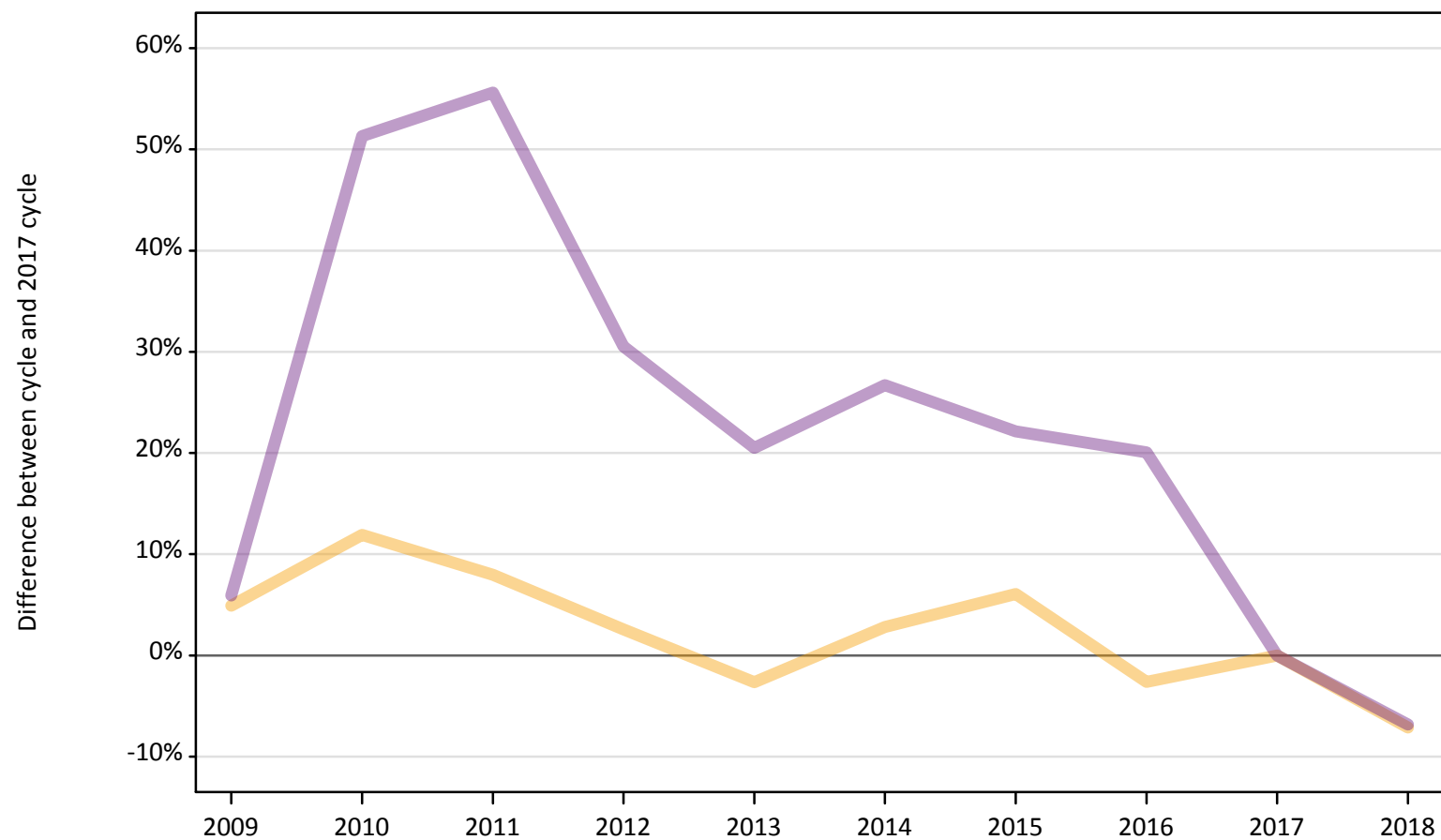
Placed through adjustment: difference between cycle and 2017 cycle

[Analysis on placed by adjustment available from 18 August 2018]

A.12 Main scheme applicants not currently placed from the UK: A level results day

Applicants in unplaced states: difference between cycle and 2017 cycle

— Holding offer
— Free to be placed in Clearing



Note: The percentage change is not plotted in the above chart for groups with fewer than 30 unplaced applicants in any one cycle.

A.13 Main scheme applicants not currently placed from the UK: A level results day

Applicants in unplaced states: applicants at A level results day

Applicant type	Status	2009	2010	2011	2012	2013	2014	2015	2016	2017	2018
Main scheme	Holding offer	80,770	86,180	83,130	78,970	74,960	79,170	81,680	74,990	77,000	71,520
	Free to be placed in Clearing	96,160	137,380	141,280	118,500	109,400	115,030	110,880	108,990	90,790	84,580

A.14 Main scheme applicants not currently placed from the UK: A level results day

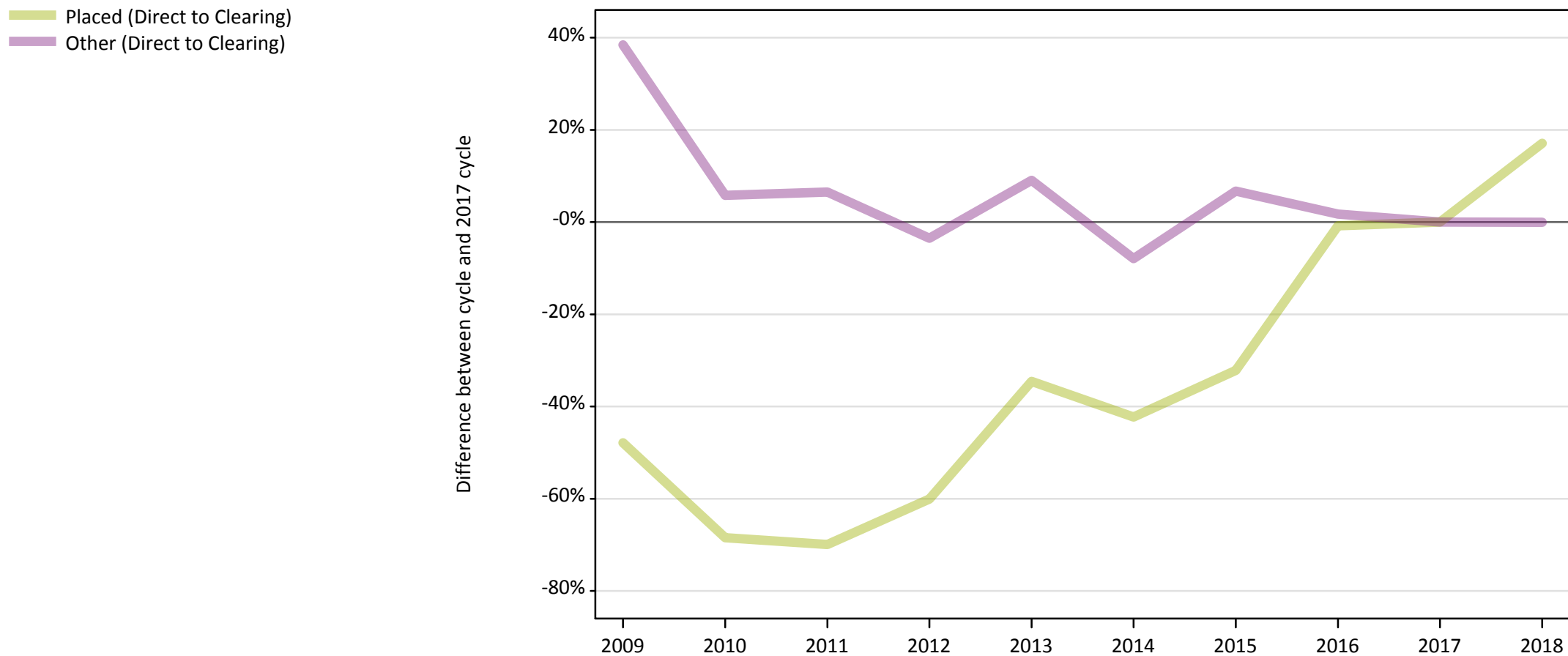
Applicants in unplaced states: difference between cycle and 2017 cycle

Applicant type	Status	2009	2010	2011	2012	2013	2014	2015	2016	2017	2018
Main scheme	Holding offer	5%	12%	8%	3%	-3%	3%	6%	-3%	0%	-7%
	Free to be placed in Clearing	6%	51%	56%	31%	21%	27%	22%	20%	0%	-7%

Note: The percentage change is not recorded in the above table for groups with fewer than 10 unplaced applicants in that cycle or in the 2017 cycle.

A.15 Direct to Clearing applicants from the UK: A level results day

Direct to Clearing: difference between cycle and 2017 cycle



Note: The percentage change is not plotted in the above chart for groups with fewer than 30 placed applicants in any one cycle.

A.16 Direct to Clearing applicants from the UK: A level results day

Direct to Clearing A level results day

Applicant type	Status	2009	2010	2011	2012	2013	2014	2015	2016	2017	2018
Direct to Clearing	Placed (Direct to Clearing)	1,330	810	770	1,020	1,670	1,470	1,730	2,530	2,550	2,990
	Other (Direct to Clearing)	9,440	7,210	7,260	6,580	7,440	6,280	7,280	6,940	6,820	6,820

A.17 Direct to Clearing applicants from the UK: A level results day

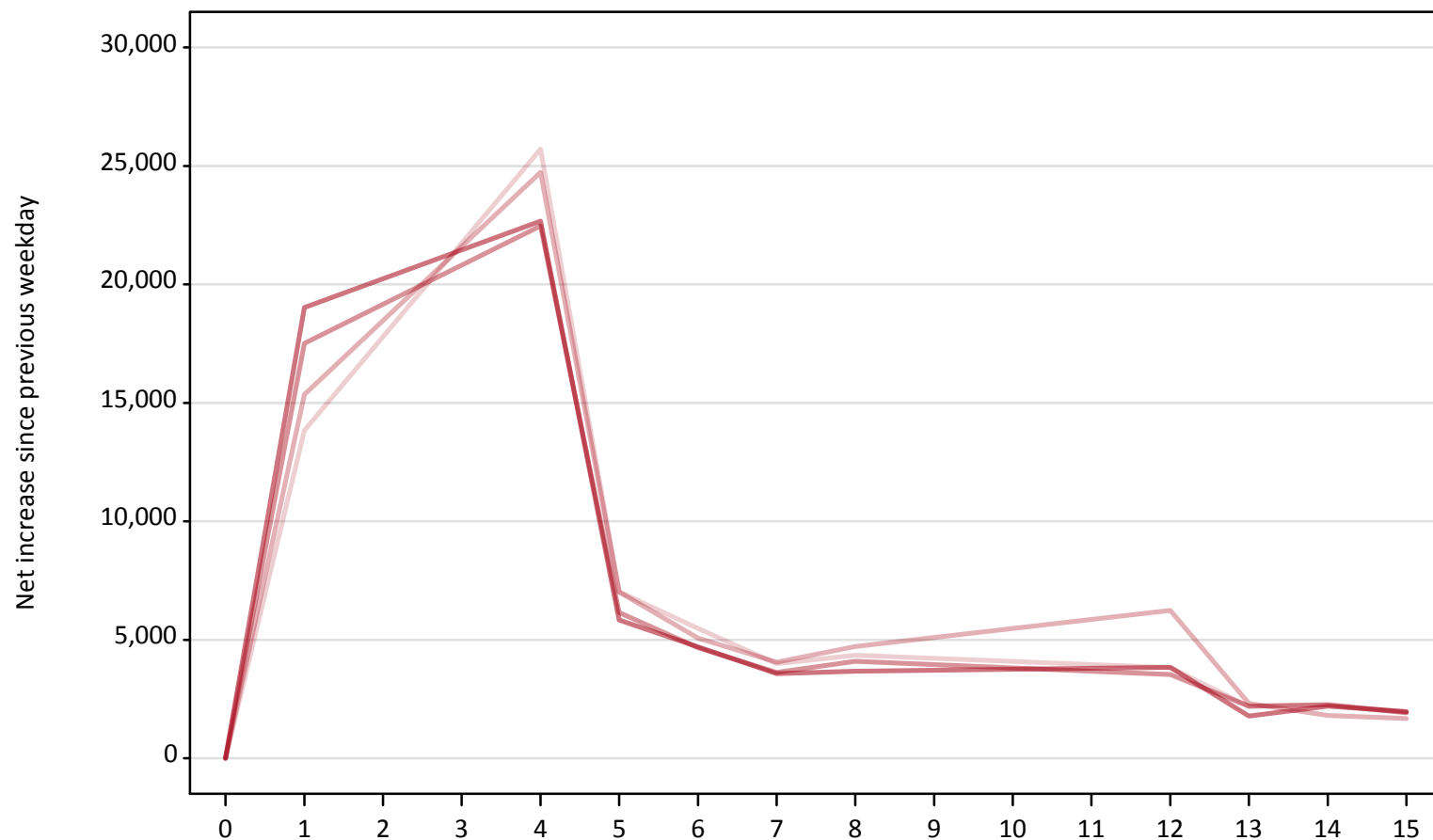
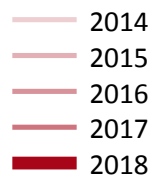
Direct to Clearing: difference between cycle and 2017 cycle

Applicant type	Status	2009	2010	2011	2012	2013	2014	2015	2016	2017	2018
Direct to Clearing	Placed (Direct to Clearing)	-48%	-68%	-70%	-60%	-35%	-42%	-32%	-1%	0%	17%
	Other (Direct to Clearing)	38%	6%	7%	-3%	9%	-8%	7%	2%	0%	-0%

Note: The percentage change is not recorded in the above table for groups with fewer than 10 placed applicants in that cycle or in the 2017 cycle.

A.18 All Placed: Daily net change (from the UK)

Net increase since previous weekday (2018 cycle up to A level results day)

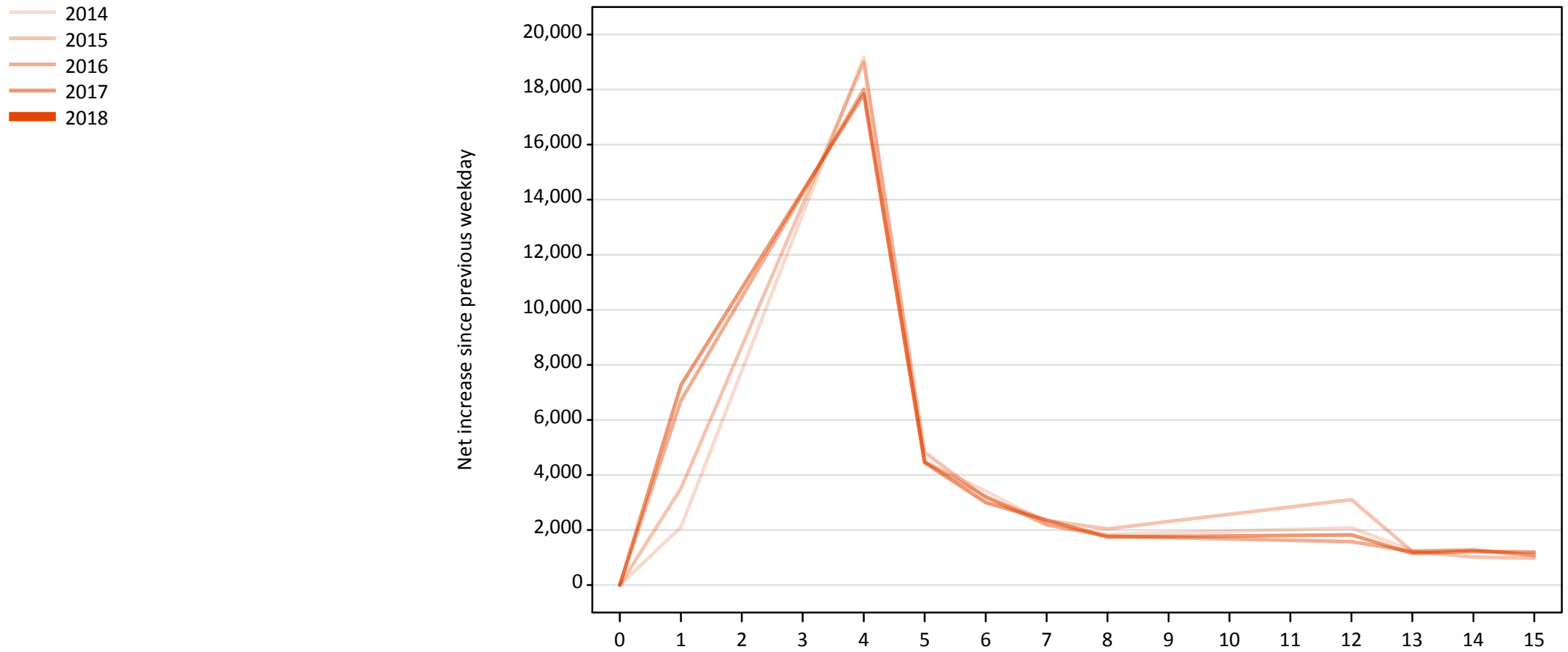


A.19 All Placed: Daily net change (from the UK)

Net increase since previous weekday (2018 cycle up to A level results day)

Applicant status, days since A level results day		2014	2015	2016	2017	2018
All Placed	0	0	0	0	0	0
	1	13,840	15,350	17,510	19,030	
	4	25,710	24,730	22,470	22,670	
	5	7,020	7,020	6,140	5,840	
	6	5,480	5,070	4,660	4,710	
	7	3,990	4,060	3,630	3,570	
	8	4,350	4,720	4,090	3,670	
	12	3,830	6,240	3,530	3,840	
	13	2,190	2,310	2,200	1,780	
	14	2,280	1,810	2,260	2,200	
	15	1,950	1,680	1,920	1,970	

A.20 Placed through Clearing only: Daily net change (from the UK)
Net increase since previous weekday (2018 cycle up to A level results day)

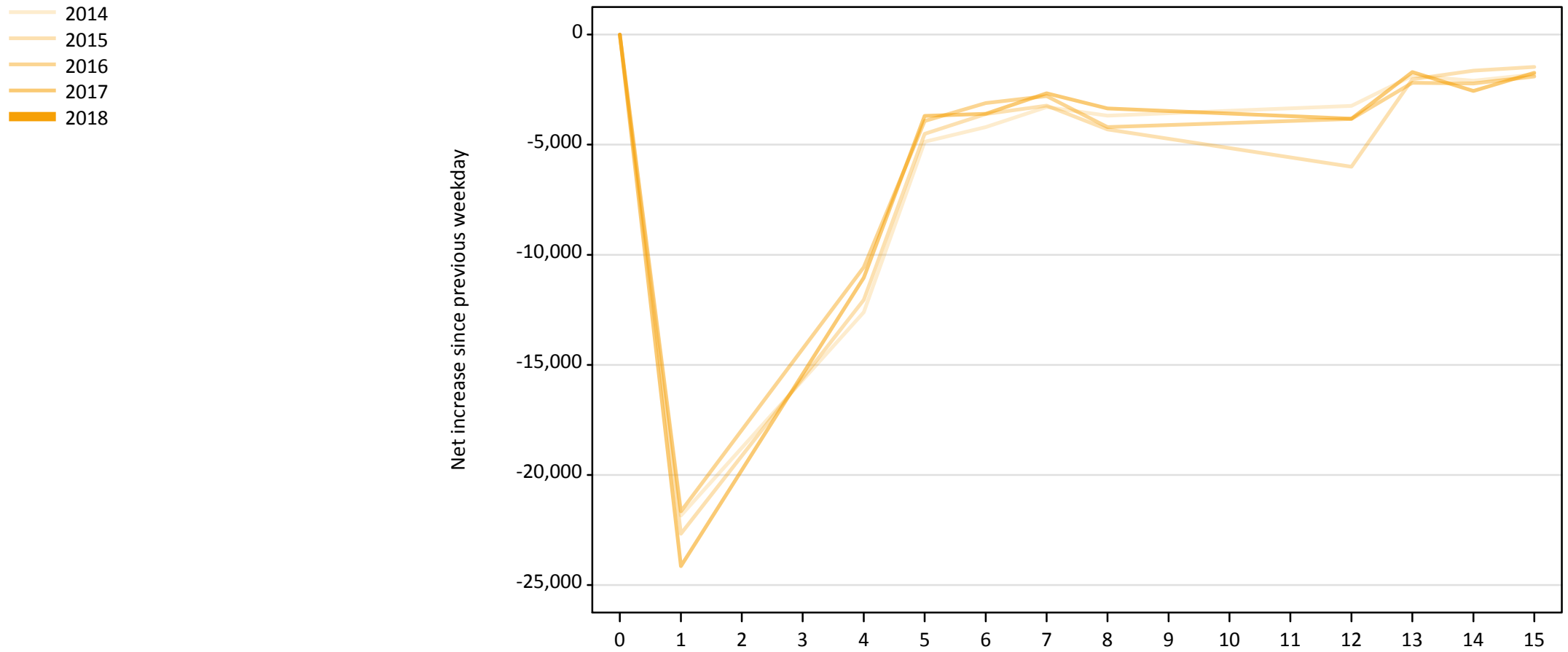


A.21 Placed through Clearing only: Daily net change (from the UK)

Net increase since previous weekday (2018 cycle up to A level results day)

Applicant status, days since A level results day		2014	2015	2016	2017	2018
Placed through Clearing only	0	0	0	0	0	0
	1	2,100	3,510	6,700	7,260	
	4	19,170	19,000	18,010	17,840	
	5	4,480	4,820	4,470	4,450	
	6	3,420	3,170	3,220	3,000	
	7	2,270	2,350	2,180	2,360	
	8	1,840	2,040	1,780	1,740	
	12	2,070	3,100	1,570	1,820	
	13	1,250	1,220	1,210	1,150	
	14	1,270	1,020	1,270	1,220	
	15	1,050	980	1,090	1,200	

A.22 Holding Offer: Daily net change (from the UK)
Net increase since previous weekday (2018 cycle up to A level results day)



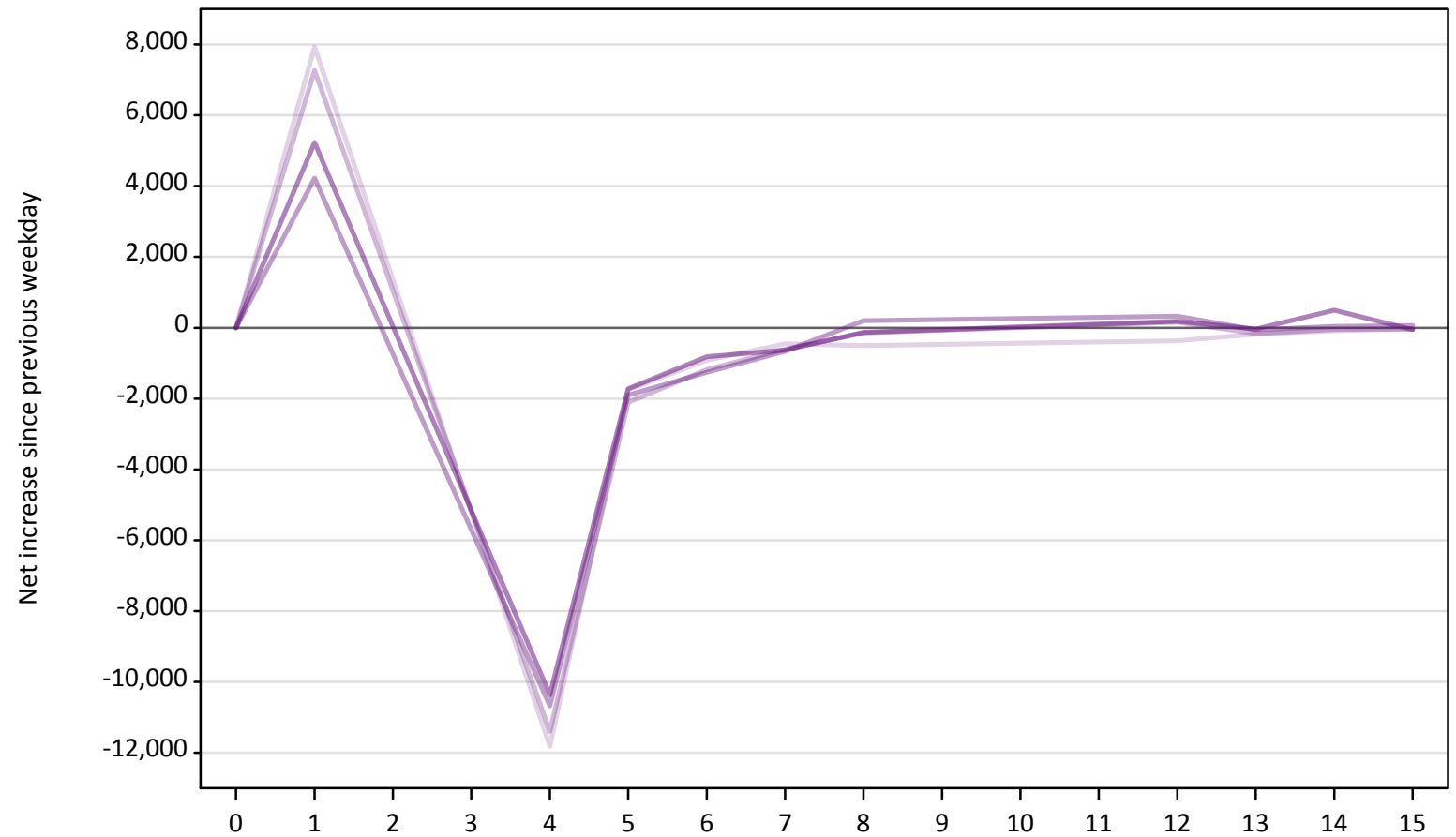
A.23 Holding Offer: Daily net change (from the UK)

Net increase since previous weekday (2018 cycle up to A level results day)

Applicant status, days since A level results day	2014	2015	2016	2017	2018
Holding Offer	0	0	0	0	0
	1	-21,840	-22,670	-21,650	-24,140
	4	-12,610	-12,050	-10,570	-11,040
	5	-4,870	-4,510	-3,920	-3,690
	6	-4,210	-3,610	-3,110	-3,600
	7	-3,290	-3,230	-2,790	-2,670
	8	-3,690	-4,310	-4,200	-3,360
	12	-3,240	-6,000	-3,830	-3,830
	13	-1,870	-2,030	-2,190	-1,700
	14	-2,100	-1,640	-2,220	-2,560
	15	-1,810	-1,470	-1,900	-1,740

A.24 Free to be placed in Clearing: Daily net change (from the UK)
Net increase since previous weekday (2018 cycle up to A level results day)

- 2014
- 2015
- 2016
- 2017
- 2018



A.25 Free to be placed in Clearing: Daily net change (from the UK)

Net increase since previous weekday (2018 cycle up to A level results day)

Applicant status, days since A level results day		2014	2015	2016	2017	2018
Free to be placed in Clearing	0	0	0	0	0	0
	1	7,940	7,260	4,220	5,230	
	4	-11,810	-11,400	-10,680	-10,370	
	5	-1,750	-2,100	-1,900	-1,730	
	6	-920	-1,180	-1,260	-820	
	7	-450	-610	-660	-630	
	8	-510	-150	200	-130	
	12	-370	150	320	190	
	13	-180	-170	-50	-40	
	14	-90	-50	40	500	
	15	-30	-40	60	-50	