

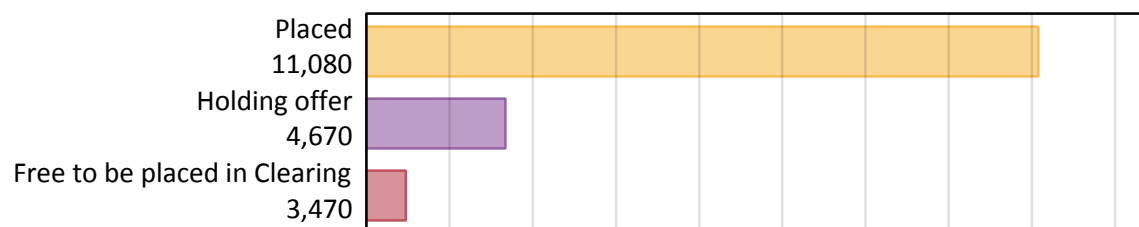
Daily Clearing Analysis: Overview

Analysis at 00:05 on Thursday 16 August 2018 (A level results day)

A.1 Applicants by type and status from Northern Ireland, 2018 cycle

Applicant type	Status	2018
Main scheme	Placed (Clearing)	40
	Placed (Adjustment)	0
	Placed (Firm)	10,250
	Placed (Insurance)	660
	Placed (Other)	110
	Holding offer	4,670
	Free to be placed in Clearing	3,470
Direct to Clearing	Placed (Direct to Clearing)	20
	Other (Direct to Clearing)	60
All applicants	Placed	11,080

A.2 Summary of applicants who are placed, holding offers or free to be placed in Clearing (Northern Ireland)



A.3 All placed applicants from Northern Ireland: A level results day

All placed applicants: difference between cycle and 2017 cycle



Note: The percentage change is not plotted in the above chart for groups with fewer than 30 placed applicants in any one cycle.

A.4 All placed applicants from Northern Ireland: A level results day

All placed applicants: applicants at A level results day

Applicant type	Status	2009	2010	2011	2012	2013	2014	2015	2016	2017	2018
All applicants	Placed	10,090	10,690	10,810	9,690	11,280	11,110	11,260	12,000	11,520	11,080

A.5 All placed applicants from Northern Ireland: A level results day

All placed applicants: difference between cycle and 2017 cycle

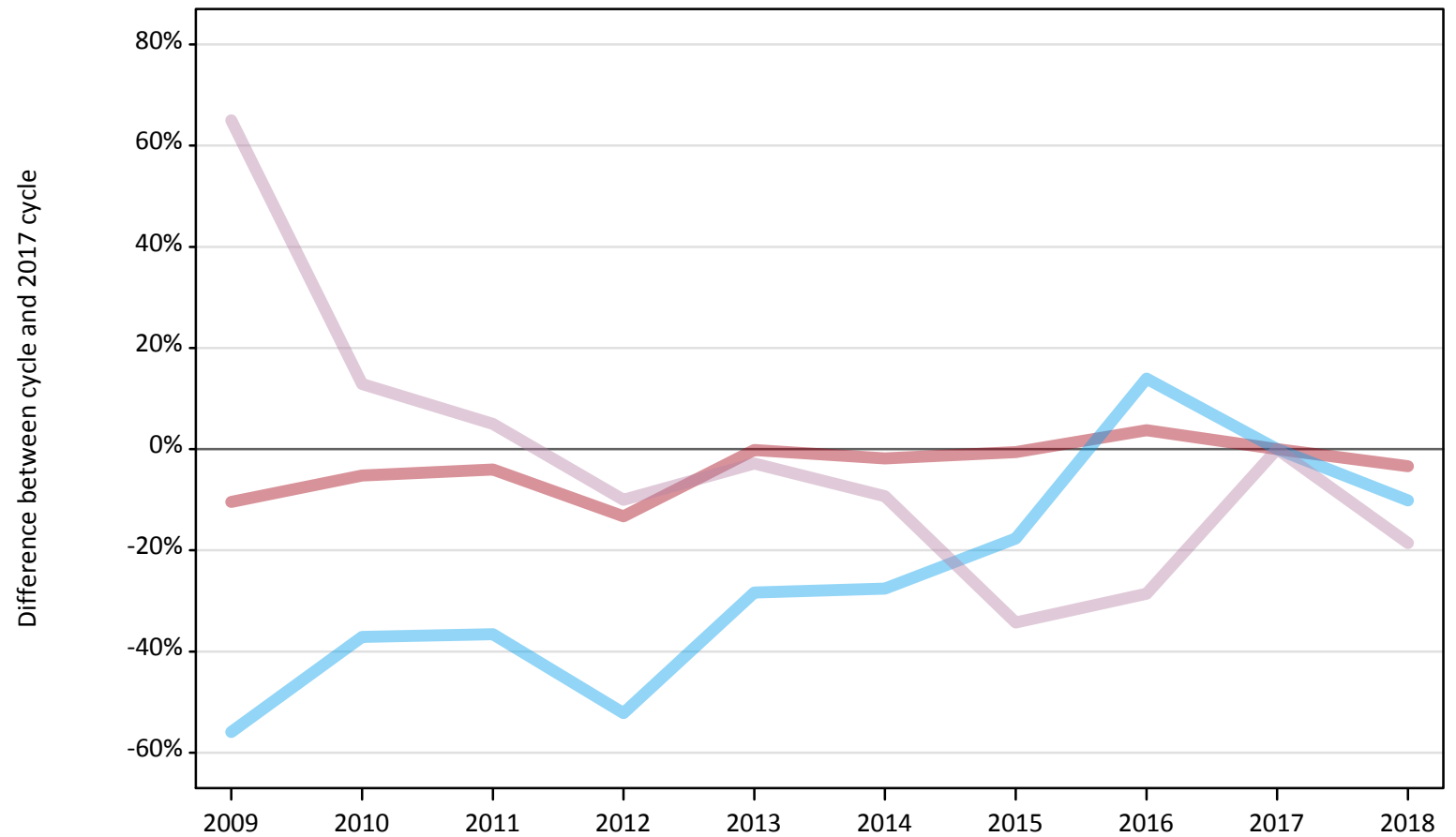
Applicant type	Status	2009	2010	2011	2012	2013	2014	2015	2016	2017	2018
All applicants	Placed	-12%	-7%	-6%	-16%	-2%	-4%	-2%	4%	0%	-4%

Note: The percentage change is not recorded in the above table for groups with fewer than 10 placed applicants in that cycle or in the 2017 cycle.

A.6 Placed main scheme applicants from Northern Ireland: A level results day

All Main scheme placed routes (excluding Adjustment): difference between cycle and 2017 cycle

- Placed (Clearing)
- Placed (Firm)
- Placed (Insurance)
- Placed (Other)



Note: The percentage change is not plotted in the above chart for groups with fewer than 30 placed applicants in any one cycle.

A.7 Placed main scheme applicants from Northern Ireland: A level results day

All Main scheme placed routes (excluding Adjustment): applicants at A level results day

Applicant type	Status	2009	2010	2011	2012	2013	2014	2015	2016	2017	2018
Main scheme	Placed (Clearing)	30	10	10	10	20	40	20	50	30	40
	Placed (Firm)	9,500	10,050	10,180	9,200	10,590	10,410	10,540	11,000	10,610	10,250
	Placed (Insurance)	320	460	460	350	520	530	600	830	730	660
	Placed (Other)	230	160	150	130	140	130	90	100	140	110

A.8 Placed main scheme applicants from Northern Ireland: A level results day

All Main scheme placed routes (excluding Adjustment): difference between cycle and 2017 cycle

Applicant type	Status	2009	2010	2011	2012	2013	2014	2015	2016	2017	2018
Main scheme	Placed (Clearing)	-10%	-59%	-52%	-52%	-17%	24%	-38%	83%	0%	41%
	Placed (Firm)	-10%	-5%	-4%	-13%	-0%	-2%	-1%	4%	0%	-3%
	Placed (Insurance)	-56%	-37%	-37%	-52%	-28%	-28%	-18%	14%	0%	-10%
	Placed (Other)	65%	13%	5%	-10%	-3%	-9%	-34%	-29%	0%	-19%

Note: The percentage change is not recorded in the above table for groups with fewer than 10 placed applicants in that cycle or in the 2017 cycle.

A.9 Main scheme applicants placed through adjustment: A level results day

Placed through adjustment: difference between cycle and 2017 cycle

[Analysis on placed by adjustment available from 18 August 2018]

A.10 Main scheme applicants placed through adjustment: A level results day

Placed through adjustment: applicants at A level results day

[Analysis on placed by adjustment available from 18 August 2018]

A.11 Main scheme applicants placed through adjustment: A level results day

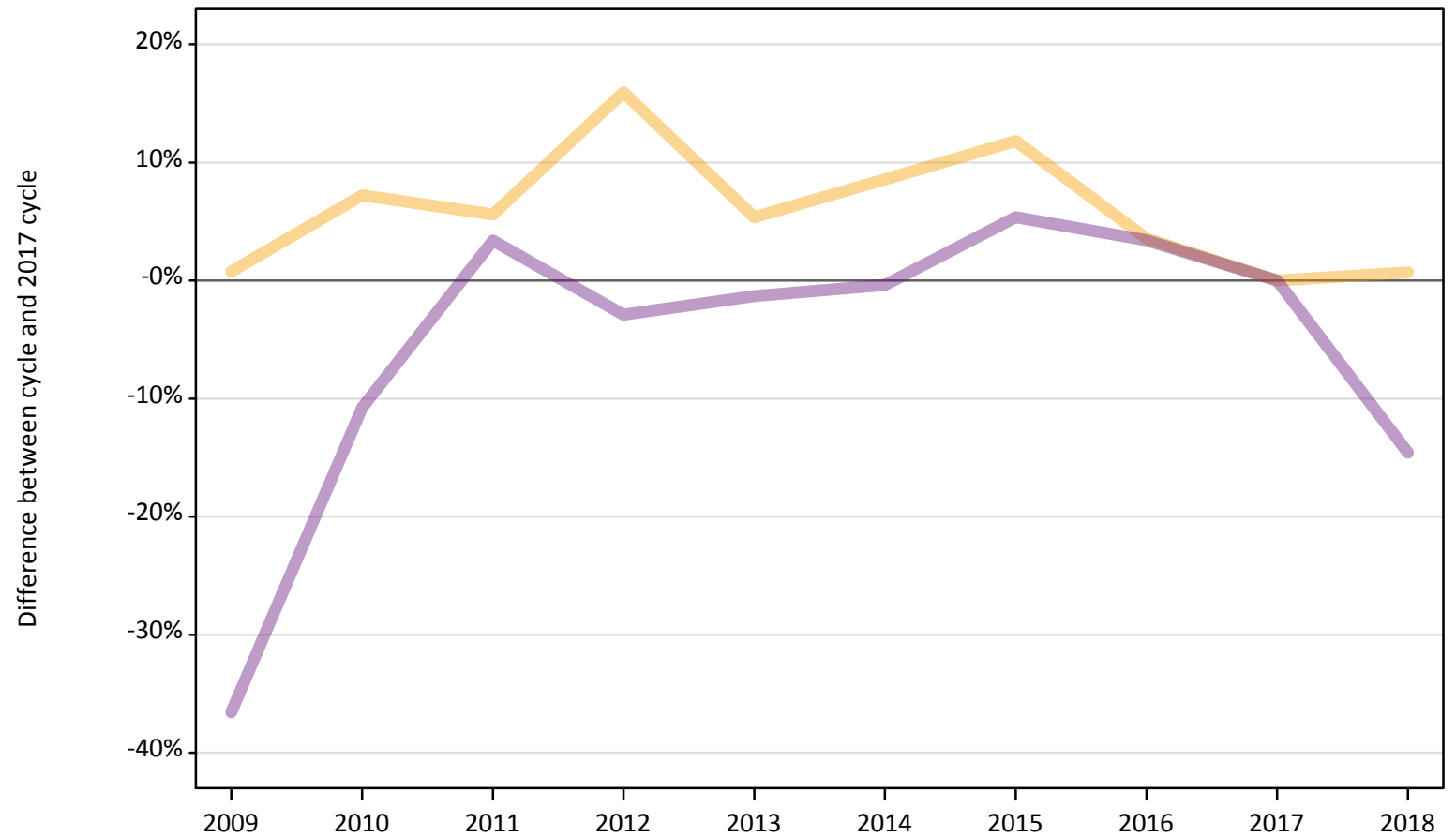
Placed through adjustment: difference between cycle and 2017 cycle

[Analysis on placed by adjustment available from 18 August 2018]

A.12 Main scheme applicants not currently placed from Northern Ireland: A level results day

Applicants in unplaced states: difference between cycle and 2017 cycle

— Holding offer
— Free to be placed in Clearing



Note: The percentage change is not plotted in the above chart for groups with fewer than 30 unplaced applicants in any one cycle.

A.13 Main scheme applicants not currently placed from Northern Ireland: A level results day

Applicants in unplaced states: applicants at A level results day

Applicant type	Status	2009	2010	2011	2012	2013	2014	2015	2016	2017	2018
Main scheme	Holding offer	4,670	4,970	4,900	5,380	4,890	5,040	5,190	4,800	4,640	4,670
	Free to be placed in Clearing	2,580	3,620	4,200	3,940	4,010	4,050	4,280	4,200	4,060	3,470

A.14 Main scheme applicants not currently placed from Northern Ireland: A level results day

Applicants in unplaced states: difference between cycle and 2017 cycle

Applicant type	Status	2009	2010	2011	2012	2013	2014	2015	2016	2017	2018
Main scheme	Holding offer	1%	7%	6%	16%	5%	9%	12%	4%	0%	1%
	Free to be placed in Clearing	-37%	-11%	3%	-3%	-1%	-0%	5%	3%	0%	-15%

Note: The percentage change is not recorded in the above table for groups with fewer than 10 unplaced applicants in that cycle or in the 2017 cycle.

A.15 Direct to Clearing applicants from Northern Ireland: A level results day

Direct to Clearing: difference between cycle and 2017 cycle



Note: The percentage change is not plotted in the above chart for groups with fewer than 30 placed applicants in any one cycle.

A.16 Direct to Clearing applicants from Northern Ireland: A level results day

Direct to Clearing A level results day

Applicant type	Status	2009	2010	2011	2012	2013	2014	2015	2016	2017	2018
Direct to Clearing	Placed (Direct to Clearing)	20	10	10	10	10	10	10	20	10	20
	Other (Direct to Clearing)	130	100	70	70	60	70	70	50	60	60

A.17 Direct to Clearing applicants from Northern Ireland: A level results day

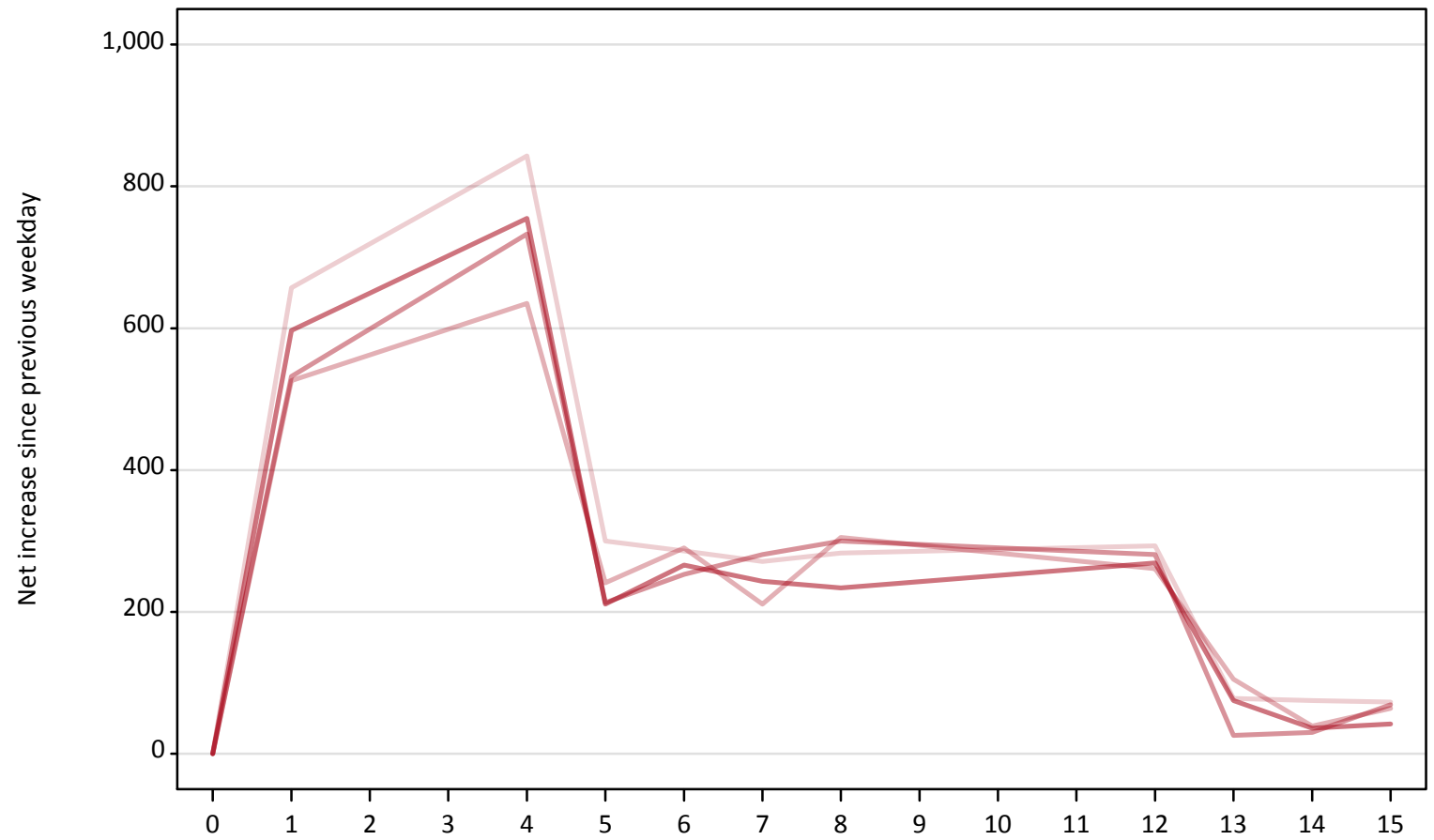
Direct to Clearing: difference between cycle and 2017 cycle

Applicant type	Status	2009	2010	2011	2012	2013	2014	2015	2016	2017	2018
Direct to Clearing	Placed (Direct to Clearing)	38%	-31%	-54%	-62%	-31%	-38%	-31%	23%	0%	31%
	Other (Direct to Clearing)	126%	82%	23%	21%	-4%	14%	14%	-12%	0%	0%

Note: The percentage change is not recorded in the above table for groups with fewer than 10 placed applicants in that cycle or in the 2017 cycle.

A.18 All Placed: Daily net change (from Northern Ireland)
Net increase since previous weekday (2018 cycle up to A level results day)

- 2014
- 2015
- 2016
- 2017
- 2018

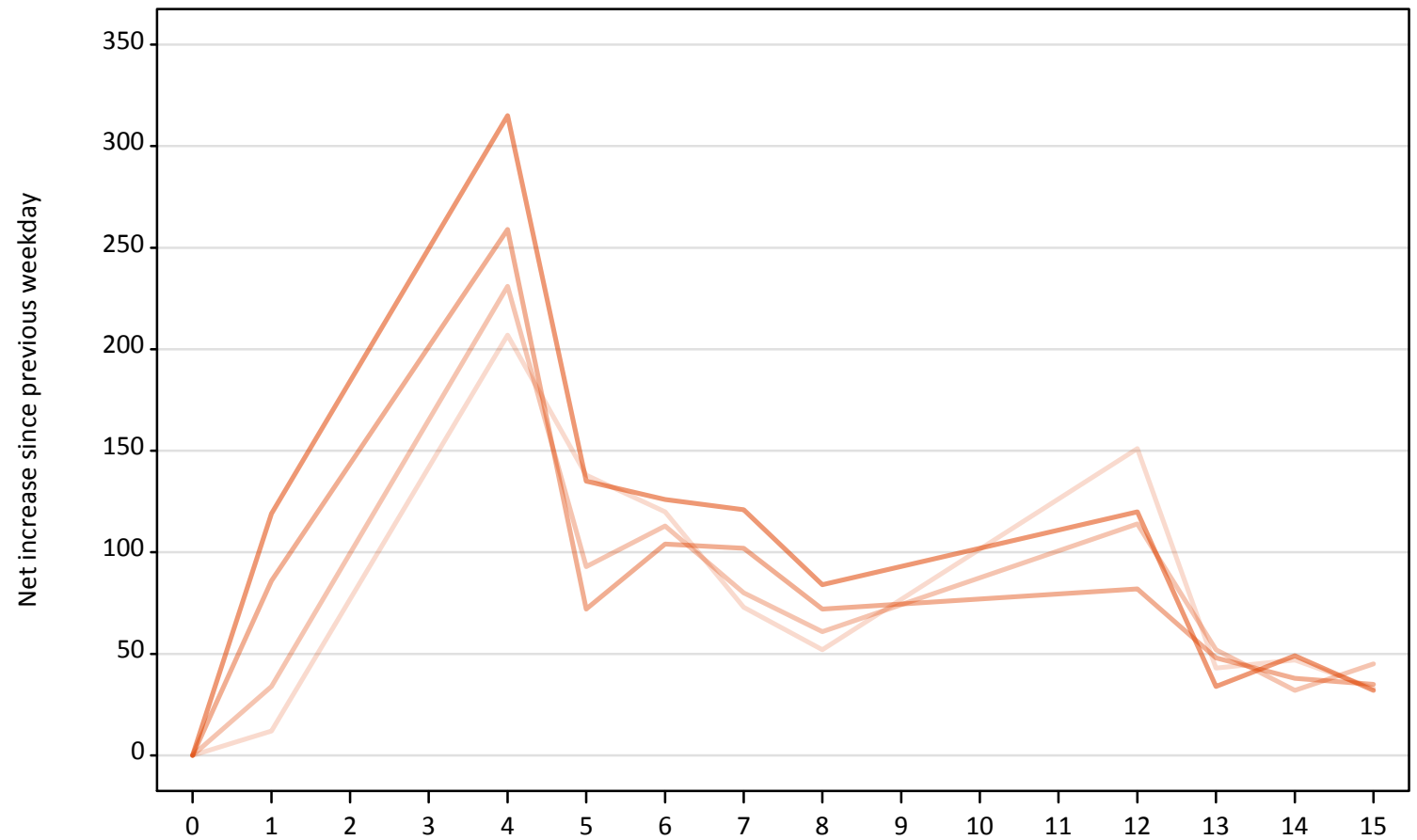


A.19 All Placed: Daily net change (from Northern Ireland)

Net increase since previous weekday (2018 cycle up to A level results day)

Applicant status, days since A level results day		2014	2015	2016	2017	2018
All Placed	0	0	0	0	0	0
	1	660	530	530	600	
	4	840	640	730	760	
	5	300	240	210	210	
	6	290	290	250	270	
	7	270	210	280	240	
	8	280	310	300	230	
	12	290	260	280	270	
	13	80	110	30	80	
	14	80	40	30	40	
	15	70	60	70	40	

A.20 Placed through Clearing only: Daily net change (from Northern Ireland)
Net increase since previous weekday (2018 cycle up to A level results day)



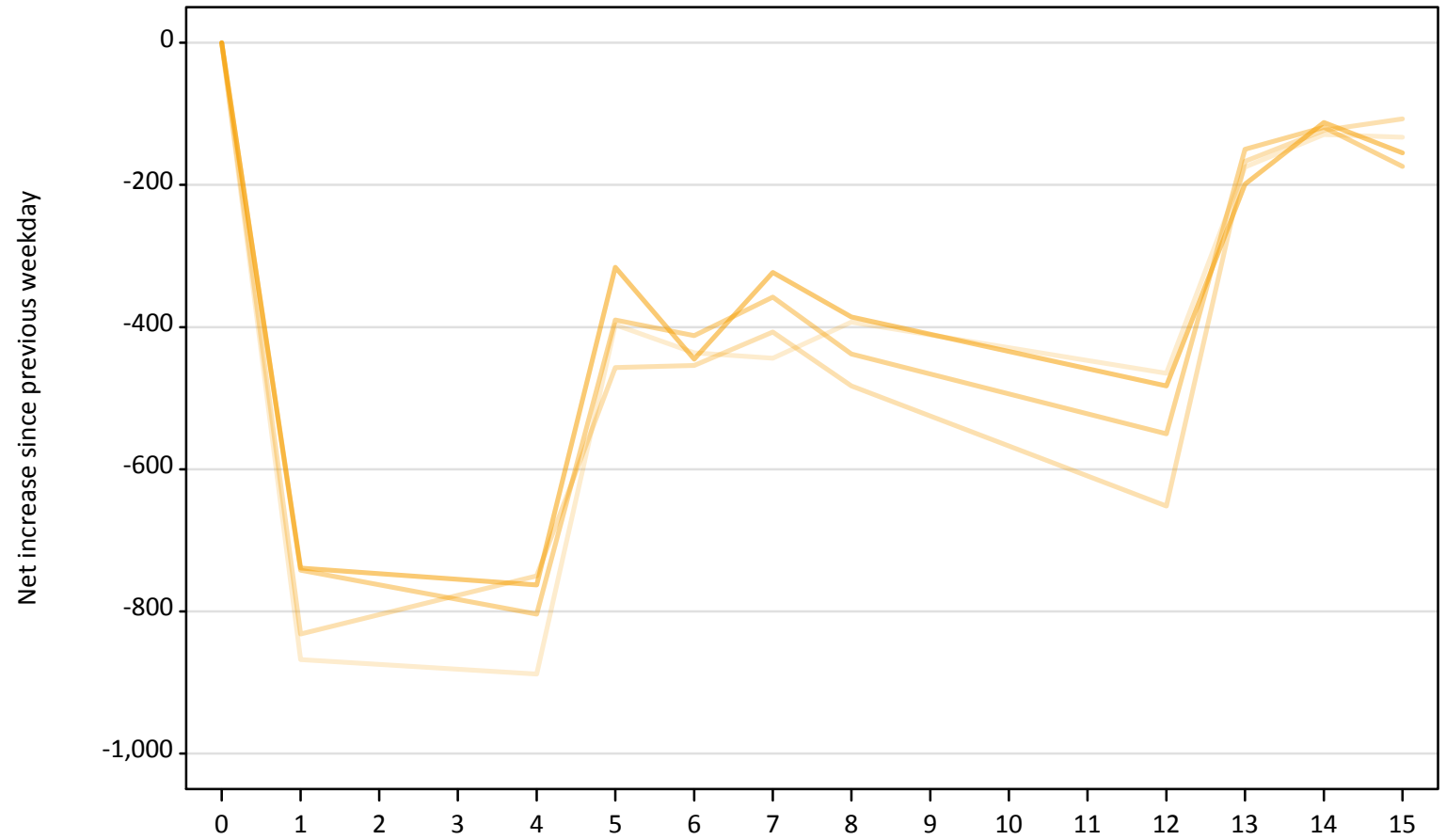
A.21 Placed through Clearing only: Daily net change (from Northern Ireland)

Net increase since previous weekday (2018 cycle up to A level results day)

Applicant status, days since A level results day		2014	2015	2016	2017	2018
Placed through Clearing only	0	0	0	0	0	0
	1	10	30	90	120	
	4	210	230	260	320	
	5	140	90	70	140	
	6	120	110	100	130	
	7	70	80	100	120	
	8	50	60	70	80	
	12	150	110	80	120	
	13	40	50	50	30	
	14	50	30	40	50	
	15	30	50	40	30	

A.22 Holding Offer: Daily net change (from Northern Ireland)
Net increase since previous weekday (2018 cycle up to A level results day)

- 2014
- 2015
- 2016
- 2017
- 2018



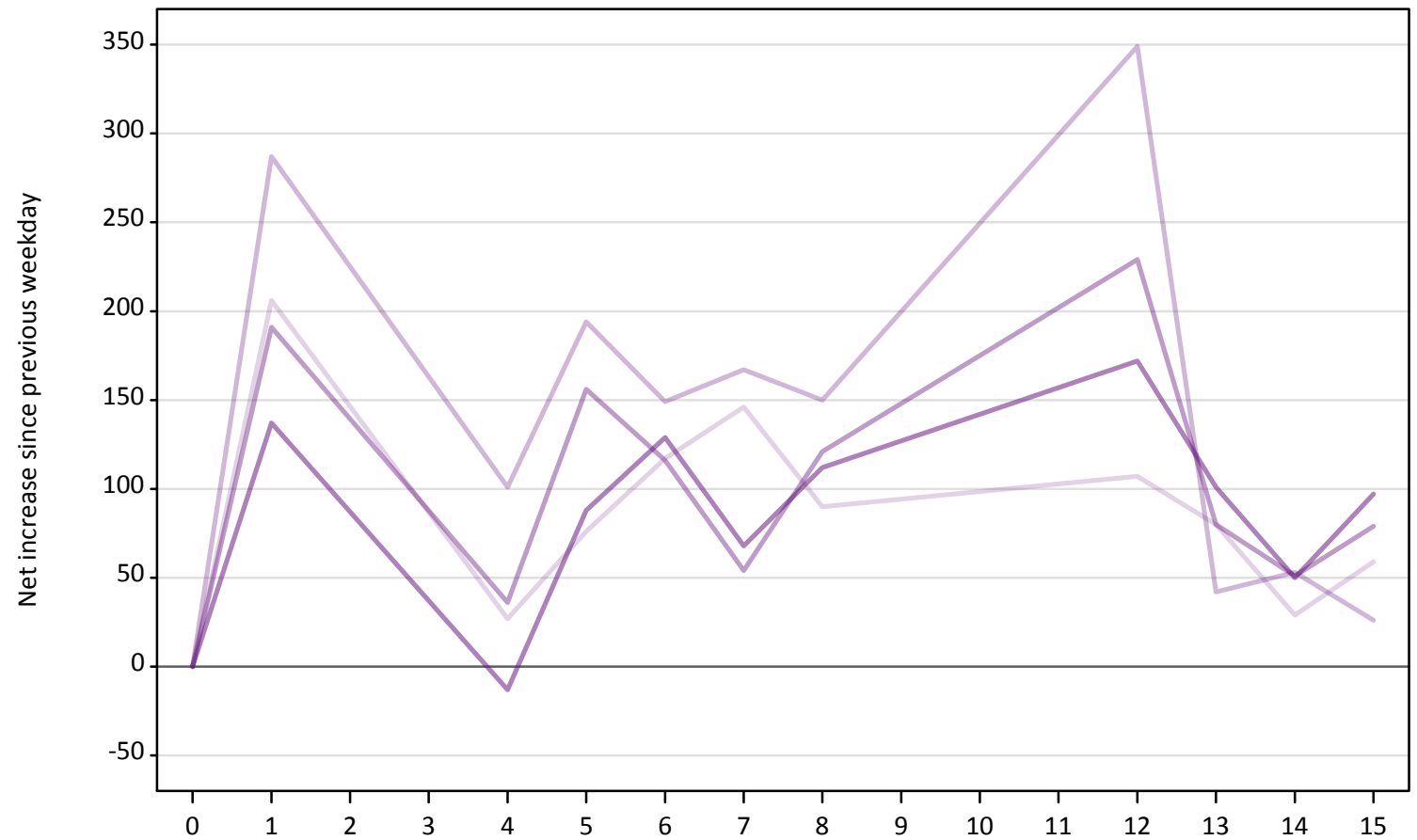
A.23 Holding Offer: Daily net change (from Northern Ireland)

Net increase since previous weekday (2018 cycle up to A level results day)

Applicant status, days since A level results day		2014	2015	2016	2017	2018
Holding Offer	0	0	0	0	0	0
	1	-870	-830	-740	-740	
	4	-890	-750	-800	-760	
	5	-400	-460	-390	-320	
	6	-440	-450	-410	-450	
	7	-440	-410	-360	-320	
	8	-390	-480	-440	-390	
	12	-470	-650	-550	-480	
	13	-180	-170	-150	-200	
	14	-130	-120	-120	-110	
	15	-130	-110	-170	-160	

A.24 Free to be placed in Clearing: Daily net change (from Northern Ireland)
Net increase since previous weekday (2018 cycle up to A level results day)

- 2014
- 2015
- 2016
- 2017
- 2018



A.25 Free to be placed in Clearing: Daily net change (from Northern Ireland)

Net increase since previous weekday (2018 cycle up to A level results day)

Applicant status, days since A level results day		2014	2015	2016	2017	2018
Free to be placed in Clearing	0	0	0	0	0	0
	1	210	290	190	140	
	4	30	100	40	-10	
	5	80	190	160	90	
	6	120	150	120	130	
	7	150	170	50	70	
	8	90	150	120	110	
	12	110	350	230	170	
	13	80	40	80	100	
	14	30	50	50	50	
	15	60	30	80	100	