

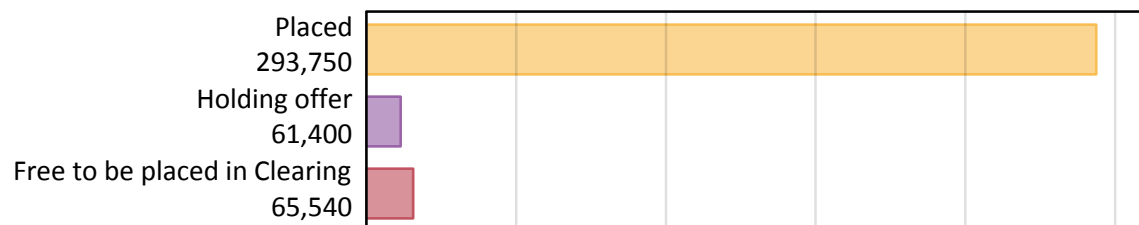
Daily Clearing Analysis: Overview

Analysis at 00:05 on Thursday 16 August 2018 (A level results day)

A.1 Applicants by type and status from England, 2018 cycle

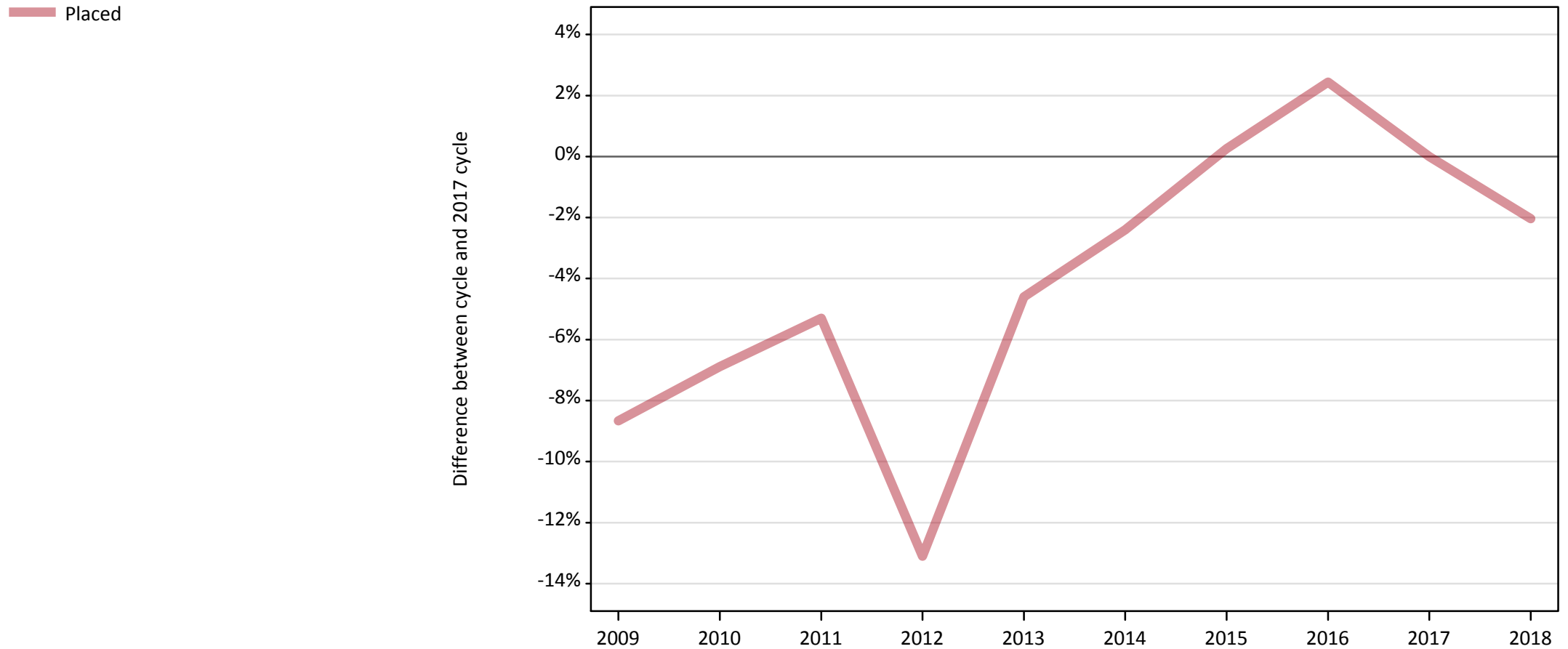
Applicant type	Status	2018
Main scheme	Placed (Clearing)	2,200
	Placed (Adjustment)	0
	Placed (Firm)	259,050
	Placed (Insurance)	21,200
	Placed (Other)	8,660
	Holding offer	61,400
	Free to be placed in Clearing	65,540
Direct to Clearing	Placed (Direct to Clearing)	2,650
	Other (Direct to Clearing)	6,090
All applicants	Placed	293,750

A.2 Summary of applicants who are placed, holding offers or free to be placed in Clearing (England)



A.3 All placed applicants from England: A level results day

All placed applicants: difference between cycle and 2017 cycle



Note: The percentage change is not plotted in the above chart for groups with fewer than 30 placed applicants in any one cycle.

A.4 All placed applicants from England: A level results day

All placed applicants: applicants at A level results day

Applicant type	Status	2009	2010	2011	2012	2013	2014	2015	2016	2017	2018
All applicants	Placed	273,870	279,200	283,960	260,570	286,070	292,650	300,630	307,170	299,850	293,750

A.5 All placed applicants from England: A level results day

All placed applicants: difference between cycle and 2017 cycle

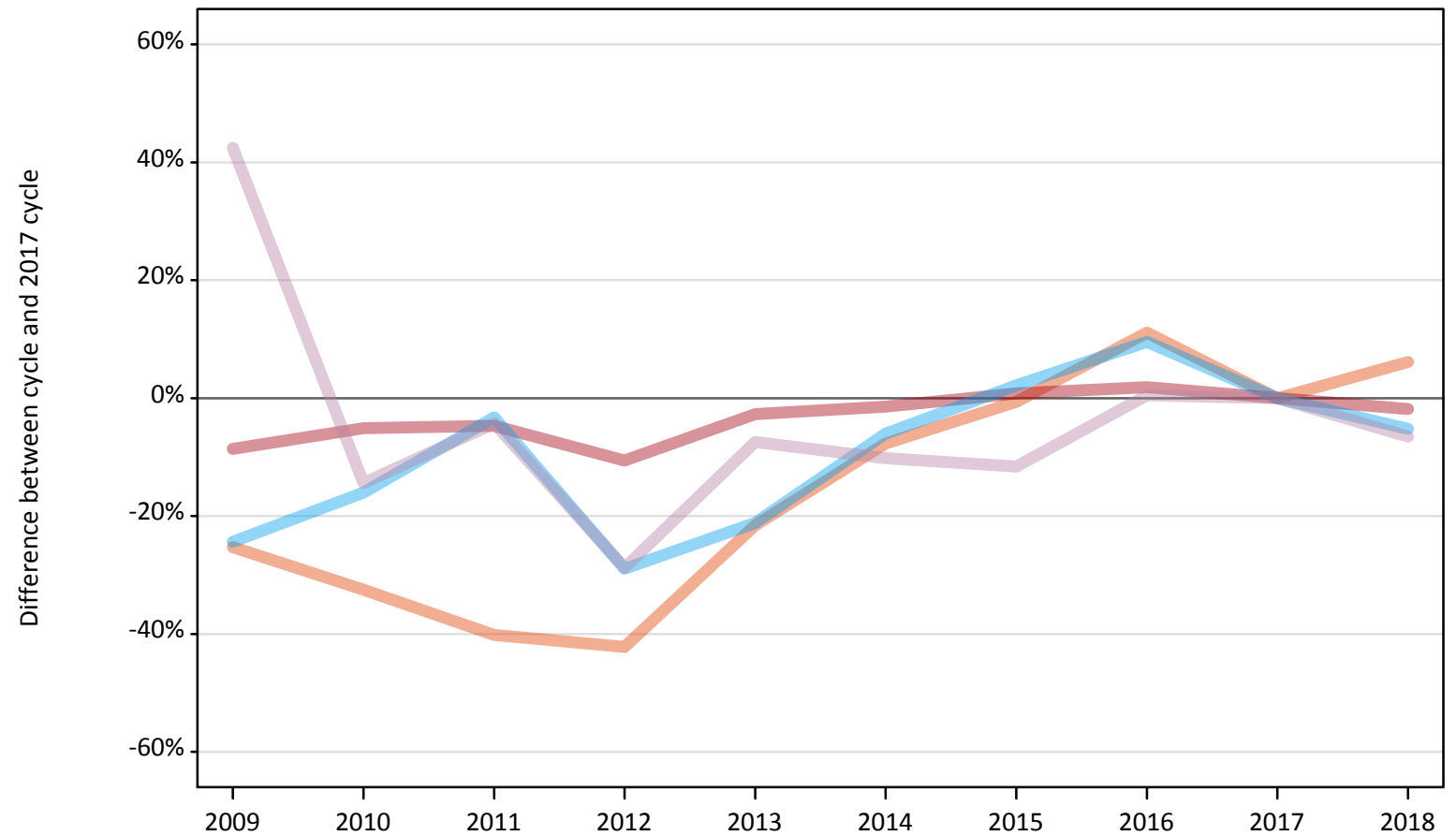
Applicant type	Status	2009	2010	2011	2012	2013	2014	2015	2016	2017	2018
All applicants	Placed	-9%	-7%	-5%	-13%	-5%	-2%	0%	2%	0%	-2%

Note: The percentage change is not recorded in the above table for groups with fewer than 10 placed applicants in that cycle or in the 2017 cycle.

A.6 Placed main scheme applicants from England: A level results day

All Main scheme placed routes (excluding Adjustment): difference between cycle and 2017 cycle

- Placed (Clearing)
- Placed (Firm)
- Placed (Insurance)
- Placed (Other)



Note: The percentage change is not plotted in the above chart for groups with fewer than 30 placed applicants in any one cycle.

A.7 Placed main scheme applicants from England: A level results day

All Main scheme placed routes (excluding Adjustment): applicants at A level results day

Applicant type	Status	2009	2010	2011	2012	2013	2014	2015	2016	2017	2018
Main scheme	Placed (Clearing)	1,550	1,400	1,240	1,200	1,620	1,910	2,060	2,300	2,070	2,200
	Placed (Firm)	241,210	250,420	251,580	236,000	256,720	260,080	265,990	268,800	263,940	259,050
	Placed (Insurance)	16,910	18,770	21,620	15,890	17,630	21,020	22,840	24,490	22,360	21,200
	Placed (Other)	13,200	7,930	8,860	6,590	8,570	8,320	8,180	9,300	9,260	8,660

A.8 Placed main scheme applicants from England: A level results day

All Main scheme placed routes (excluding Adjustment): difference between cycle and 2017 cycle

Applicant type	Status	2009	2010	2011	2012	2013	2014	2015	2016	2017	2018
Main scheme	Placed (Clearing)	-25%	-32%	-40%	-42%	-22%	-8%	-1%	11%	0%	6%
	Placed (Firm)	-9%	-5%	-5%	-11%	-3%	-1%	1%	2%	0%	-2%
	Placed (Insurance)	-24%	-16%	-3%	-29%	-21%	-6%	2%	10%	0%	-5%
	Placed (Other)	42%	-14%	-4%	-29%	-7%	-10%	-12%	0%	0%	-7%

Note: The percentage change is not recorded in the above table for groups with fewer than 10 placed applicants in that cycle or in the 2017 cycle.

A.9 Main scheme applicants placed through adjustment: A level results day

Placed through adjustment: difference between cycle and 2017 cycle

[Analysis on placed by adjustment available from 18 August 2018]

A.10 Main scheme applicants placed through adjustment: A level results day

Placed through adjustment: applicants at A level results day

[Analysis on placed by adjustment available from 18 August 2018]

A.11 Main scheme applicants placed through adjustment: A level results day

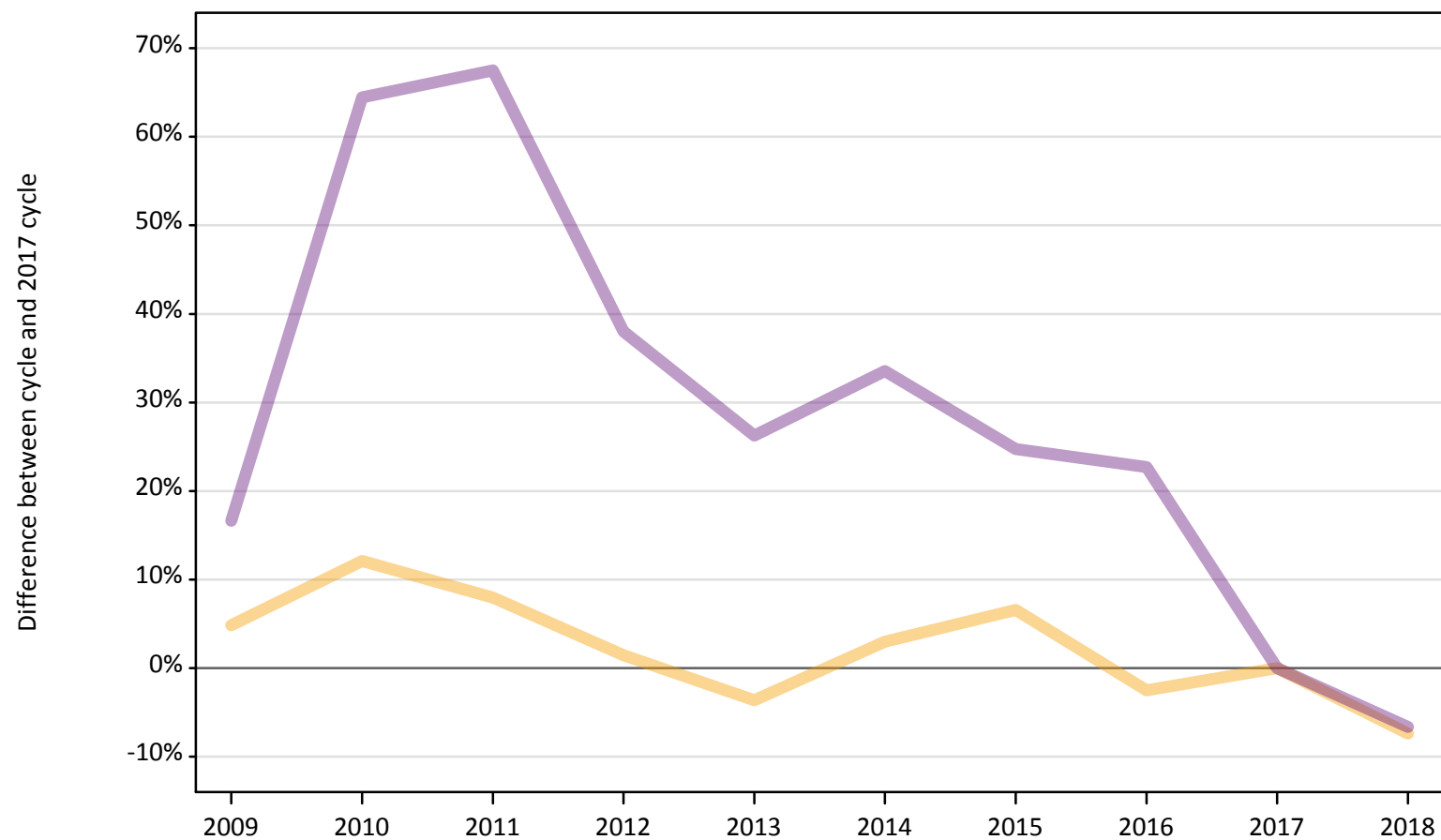
Placed through adjustment: difference between cycle and 2017 cycle

[Analysis on placed by adjustment available from 18 August 2018]

A.12 Main scheme applicants not currently placed from England: A level results day

Applicants in unplaced states: difference between cycle and 2017 cycle

— Holding offer
— Free to be placed in Clearing



Note: The percentage change is not plotted in the above chart for groups with fewer than 30 unplaced applicants in any one cycle.

A.13 Main scheme applicants not currently placed from England: A level results day

Applicants in unplaced states: applicants at A level results day

Applicant type	Status	2009	2010	2011	2012	2013	2014	2015	2016	2017	2018
Main scheme	Holding offer	69,500	74,320	71,570	67,250	63,890	68,260	70,660	64,620	66,290	61,400
	Free to be placed in Clearing	81,880	115,460	117,610	96,900	88,650	93,760	87,570	86,140	70,210	65,540

A.14 Main scheme applicants not currently placed from England: A level results day

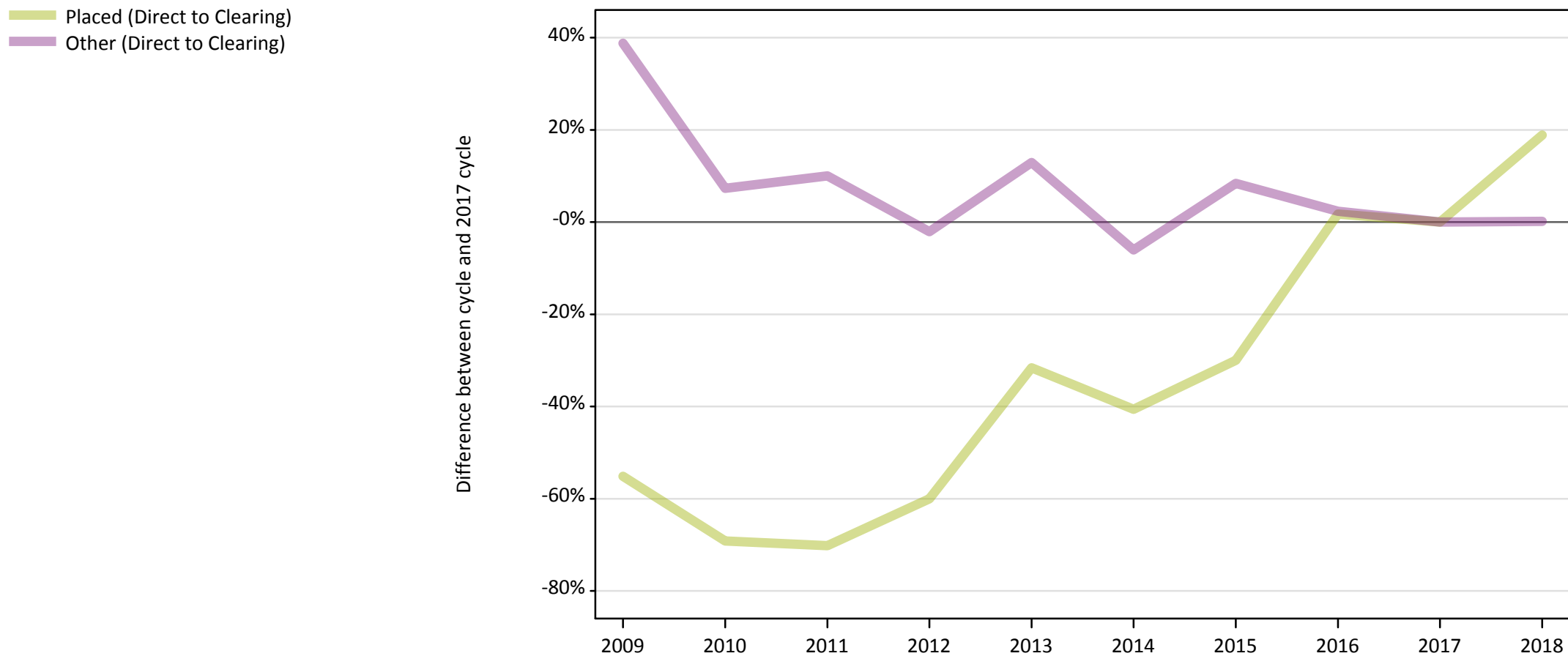
Applicants in unplaced states: difference between cycle and 2017 cycle

Applicant type	Status	2009	2010	2011	2012	2013	2014	2015	2016	2017	2018
Main scheme	Holding offer	5%	12%	8%	1%	-4%	3%	7%	-3%	0%	-7%
	Free to be placed in Clearing	17%	64%	68%	38%	26%	34%	25%	23%	0%	-7%

Note: The percentage change is not recorded in the above table for groups with fewer than 10 unplaced applicants in that cycle or in the 2017 cycle.

A.15 Direct to Clearing applicants from England: A level results day

Direct to Clearing: difference between cycle and 2017 cycle



Note: The percentage change is not plotted in the above chart for groups with fewer than 30 placed applicants in any one cycle.

A.16 Direct to Clearing applicants from England: A level results day

Direct to Clearing A level results day

Applicant type	Status	2009	2010	2011	2012	2013	2014	2015	2016	2017	2018
Direct to Clearing	Placed (Direct to Clearing)	1,000	690	670	890	1,530	1,320	1,560	2,270	2,230	2,650
	Other (Direct to Clearing)	8,440	6,520	6,690	5,950	6,860	5,710	6,590	6,220	6,080	6,090

A.17 Direct to Clearing applicants from England: A level results day

Direct to Clearing: difference between cycle and 2017 cycle

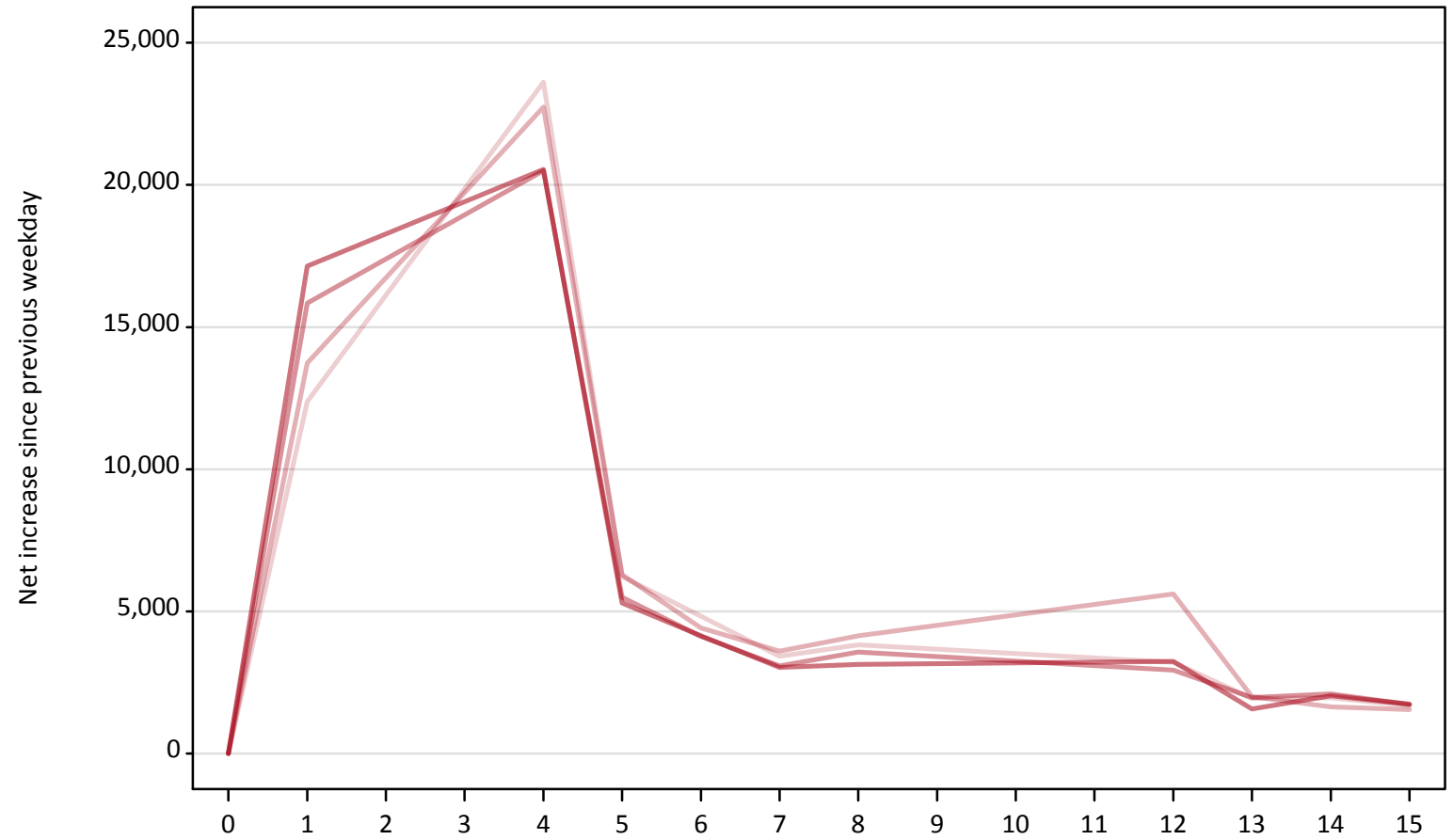
Applicant type	Status	2009	2010	2011	2012	2013	2014	2015	2016	2017	2018
Direct to Clearing	Placed (Direct to Clearing)	-55%	-69%	-70%	-60%	-32%	-41%	-30%	2%	0%	19%
	Other (Direct to Clearing)	39%	7%	10%	-2%	13%	-6%	8%	2%	0%	0%

Note: The percentage change is not recorded in the above table for groups with fewer than 10 placed applicants in that cycle or in the 2017 cycle.

A.18 All Placed: Daily net change (from England)

Net increase since previous weekday (2018 cycle up to A level results day)

- 2014
- 2015
- 2016
- 2017
- 2018

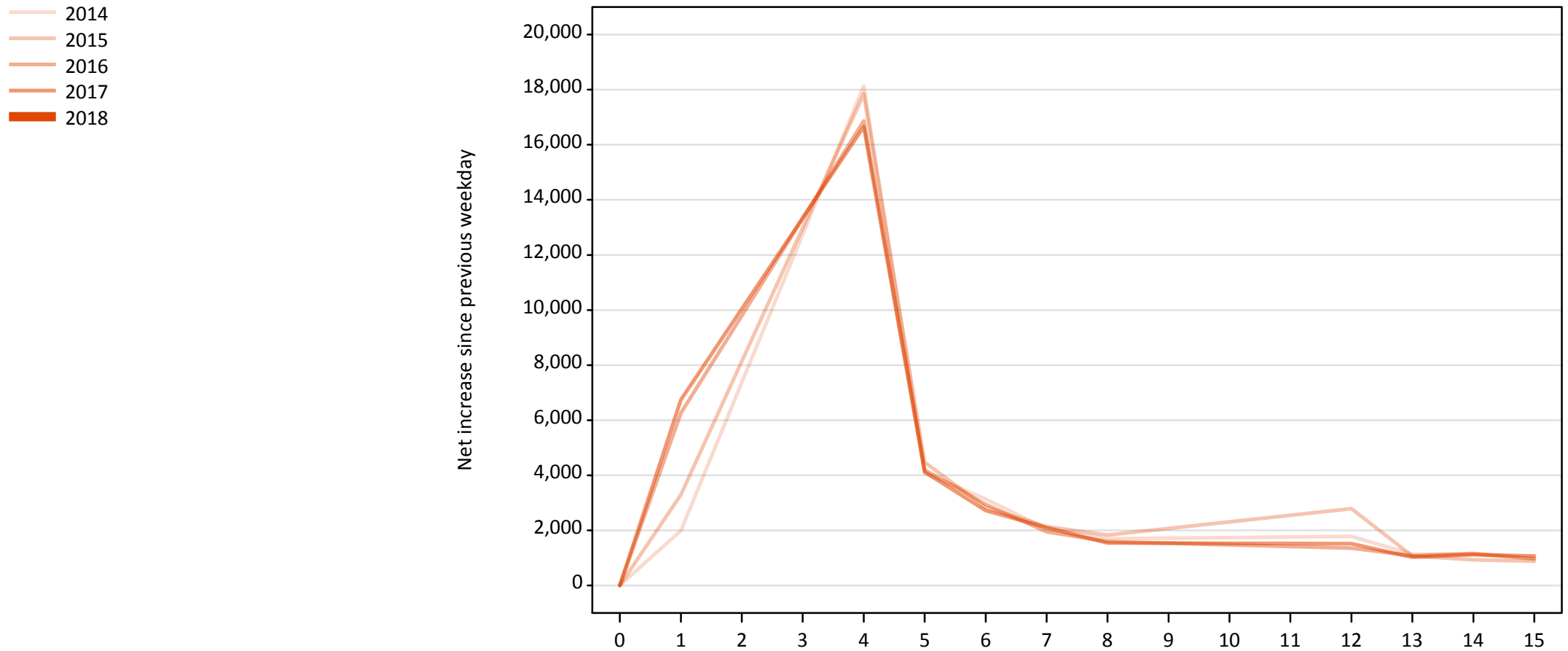


A.19 All Placed: Daily net change (from England)

Net increase since previous weekday (2018 cycle up to A level results day)

Applicant status, days since A level results day		2014	2015	2016	2017	2018
All Placed	0	0	0	0	0	0
	1	12,380	13,730	15,840	17,150	
	4	23,620	22,730	20,500	20,540	
	5	6,220	6,300	5,500	5,300	
	6	4,830	4,410	4,120	4,140	
	7	3,420	3,600	3,080	3,030	
	8	3,830	4,140	3,570	3,130	
	12	3,200	5,610	2,940	3,240	
	13	1,940	2,000	1,970	1,560	
	14	1,960	1,640	2,100	2,030	
	15	1,680	1,540	1,730	1,740	

A.20 Placed through Clearing only: Daily net change (from England)
Net increase since previous weekday (2018 cycle up to A level results day)



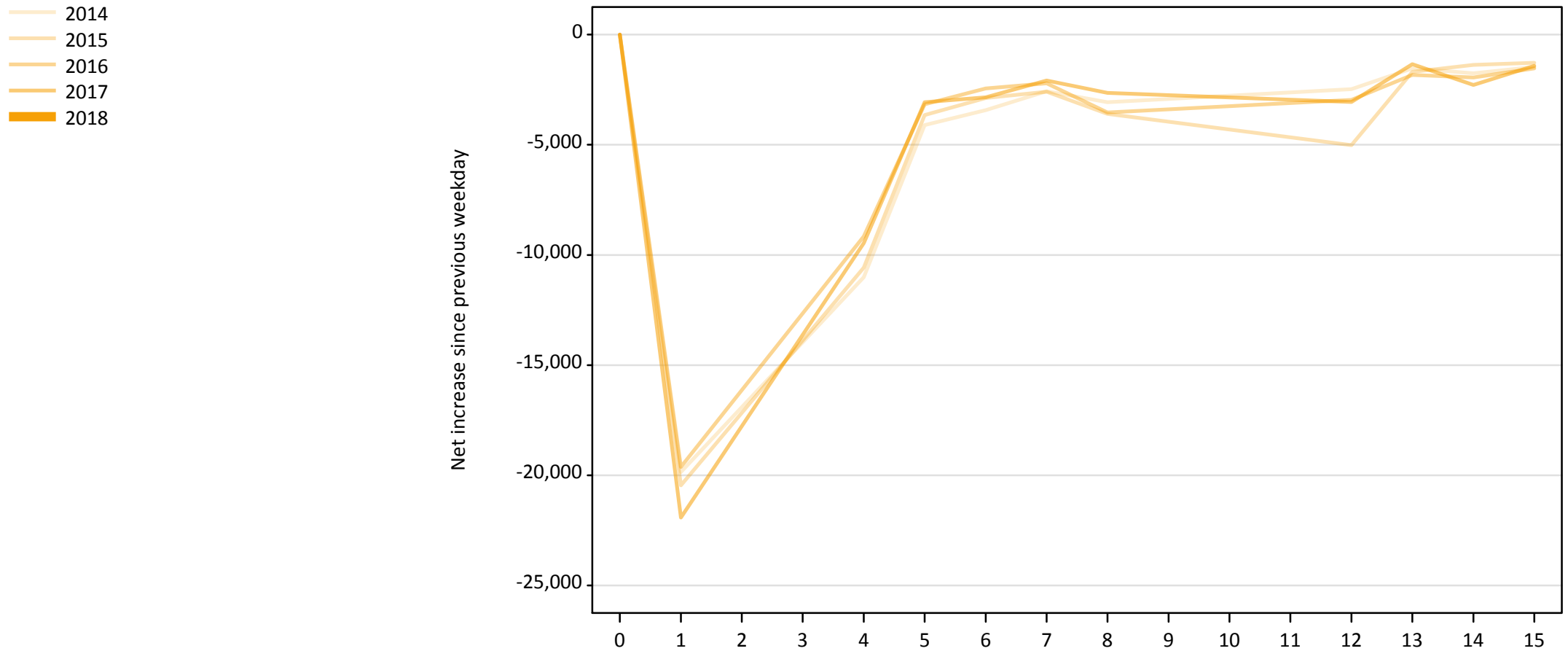
A.21 Placed through Clearing only: Daily net change (from England)

Net increase since previous weekday (2018 cycle up to A level results day)

Applicant status, days since A level results day		2014	2015	2016	2017	2018
Placed through Clearing only	0	0	0	0	0	0
	1	1,990	3,300	6,260	6,740	
	4	18,140	17,850	16,870	16,660	
	5	4,080	4,470	4,190	4,120	
	6	3,140	2,830	2,940	2,720	
	7	2,060	2,140	1,950	2,100	
	8	1,690	1,830	1,590	1,540	
	12	1,780	2,790	1,360	1,510	
	13	1,130	1,060	1,080	1,020	
	14	1,130	930	1,160	1,120	
	15	960	880	970	1,060	

A.22 Holding Offer: Daily net change (from England)

Net increase since previous weekday (2018 cycle up to A level results day)



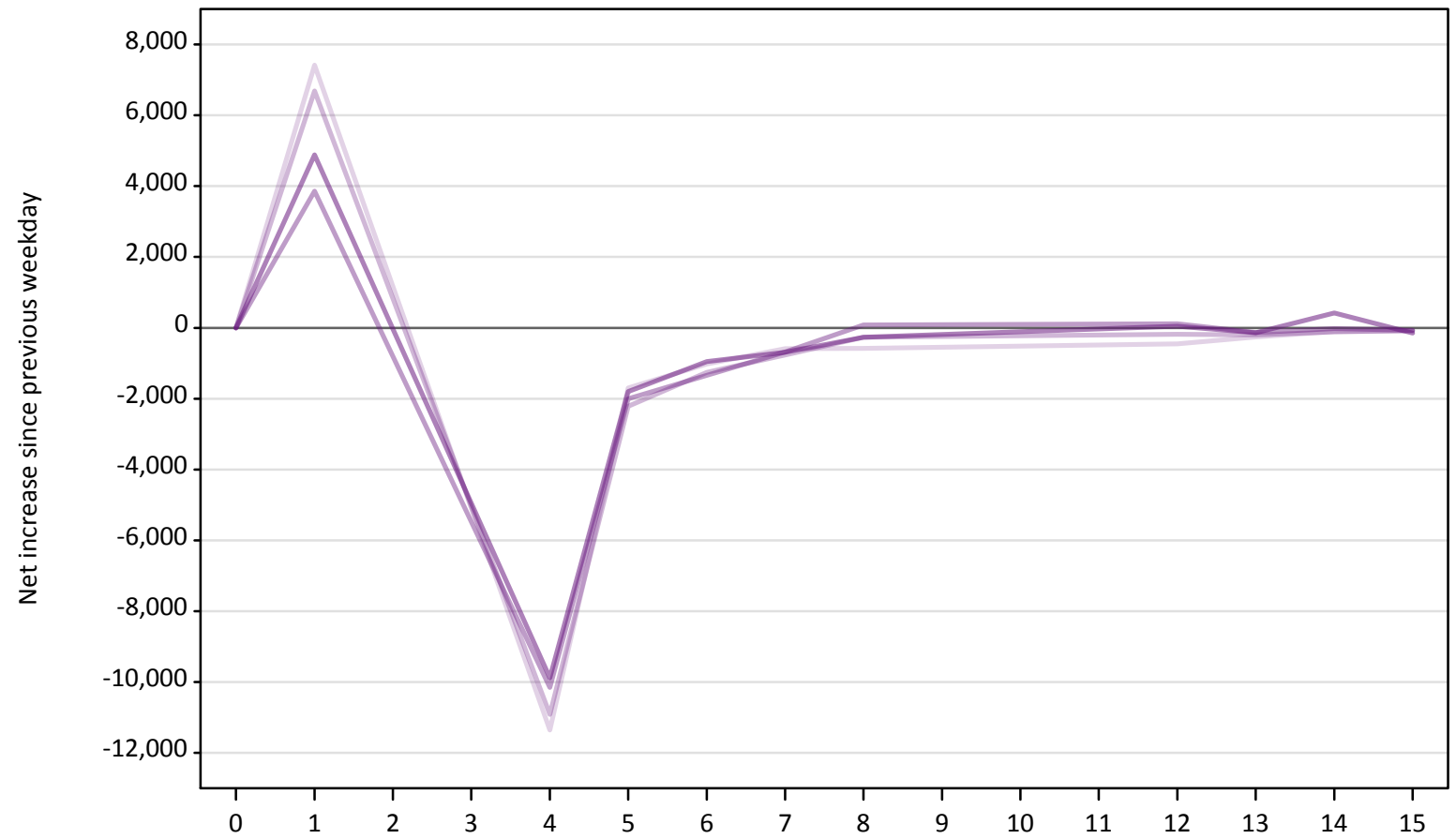
A.23 Holding Offer: Daily net change (from England)

Net increase since previous weekday (2018 cycle up to A level results day)

Applicant status, days since A level results day		2014	2015	2016	2017	2018
Holding Offer	0	0	0	0	0	0
	1	-19,850	-20,460	-19,620	-21,920	
	4	-11,010	-10,580	-9,160	-9,470	
	5	-4,110	-3,660	-3,160	-3,060	
	6	-3,430	-2,870	-2,450	-2,840	
	7	-2,570	-2,590	-2,210	-2,080	
	8	-3,070	-3,590	-3,540	-2,650	
	12	-2,470	-5,010	-2,970	-3,060	
	13	-1,530	-1,690	-1,830	-1,340	
	14	-1,760	-1,370	-1,950	-2,290	
	15	-1,470	-1,280	-1,530	-1,420	

A.24 Free to be placed in Clearing: Daily net change (from England)
Net increase since previous weekday (2018 cycle up to A level results day)

- 2014
- 2015
- 2016
- 2017
- 2018



A.25 Free to be placed in Clearing: Daily net change (from England)

Net increase since previous weekday (2018 cycle up to A level results day)

Applicant status, days since A level results day		2014	2015	2016	2017	2018
Free to be placed in Clearing	0	0	0	0	0	0
	1	7,420	6,690	3,860	4,890	
	4	-11,360	-10,920	-10,160	-9,880	
	5	-1,700	-2,220	-2,000	-1,800	
	6	-1,020	-1,260	-1,340	-950	
	7	-590	-770	-680	-690	
	8	-580	-270	80	-270	
	12	-450	-190	110	50	
	13	-260	-200	-130	-140	
	14	-100	-120	-20	420	
	15	-100	-70	-70	-150	