

Daily Clearing Analysis: Country

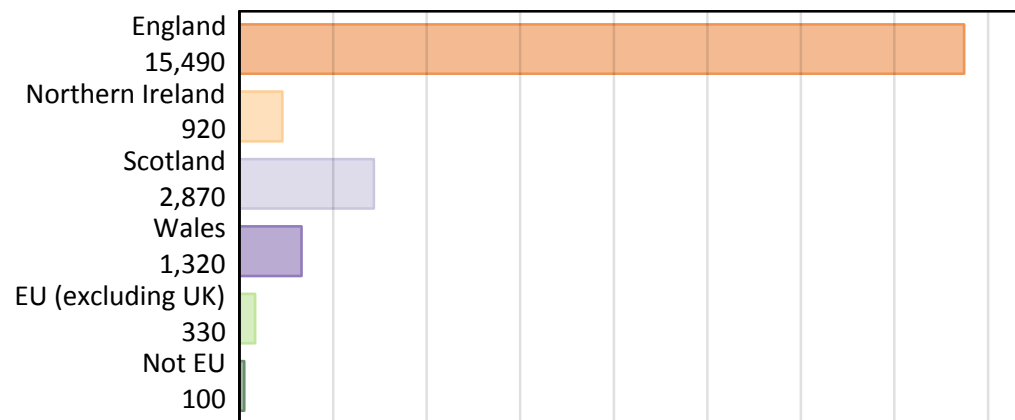
B7 Nursing analysis at 00:05 on Thursday 16 August 2018 (A level results day)

BB.1 Placed applicants to nursing by country of provider and domicile, 2018 cycle

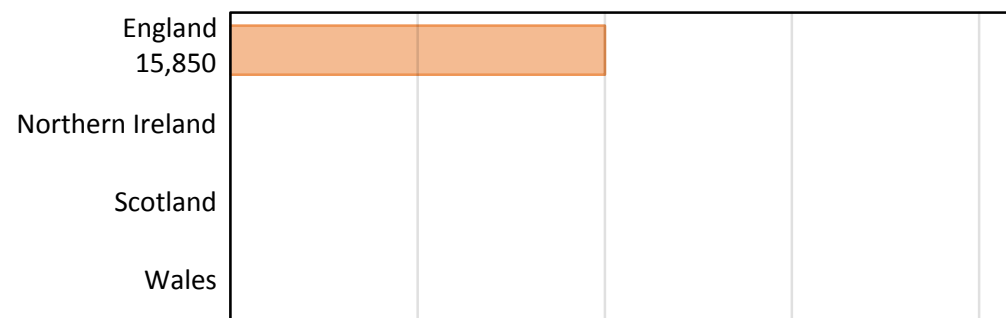
| Domicile of applicant | Country of provider | | | | |
|-----------------------|---------------------|------------------|----------|-------|--------|
| | England | Northern Ireland | Scotland | Wales | UK |
| England | 15,210 | | | | 15,490 |
| Northern Ireland | 160 | | | | 920 |
| Scotland | 10 | | | | 2,870 |
| Wales | 260 | | | | 1,320 |
| EU (excluding UK) | 120 | | | | 330 |
| Not EU | 80 | | | | 100 |
| All | 15,850 | | | | 21,030 |

Note that figures for providers in Northern Ireland, Scotland, and Wales are not reported here.

BB.2 Placed applicants to nursing by domicile group



BB.3 Placed applicants to nursing by country of provider

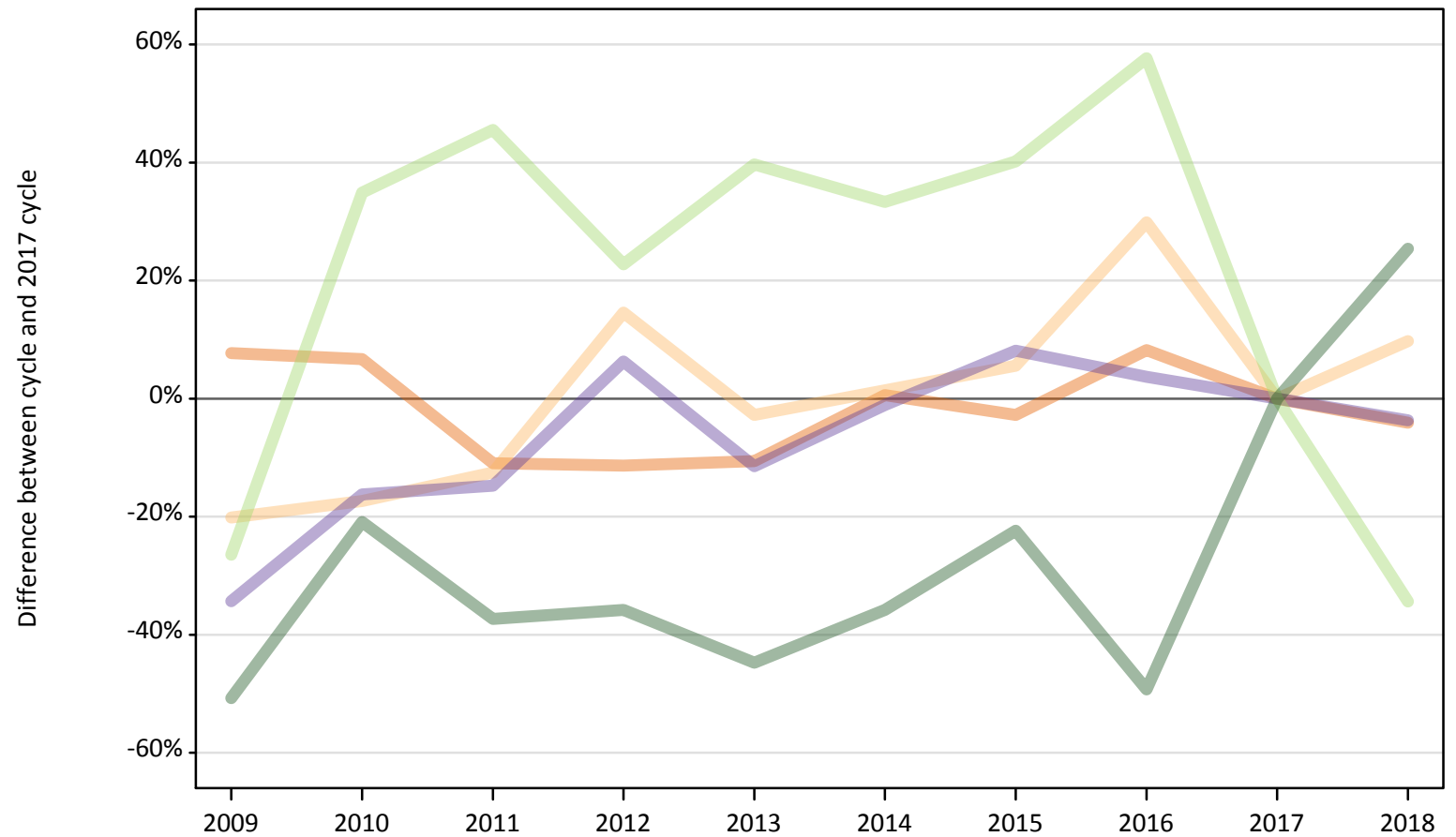


Note that figures for providers in Northern Ireland, Scotland, and Wales are not reported here.

BB.4 Placed applicants to nursing at A level results day: providers in England

Selected applicant domiciles: difference between cycle and 2017 cycle (at A level results day)

- England
- Northern Ireland
- Scotland
- Wales
- EU (excluding UK)
- Not EU



Note: The percentage change is not plotted in the above chart for groups with fewer than 30 placed applicants in any one cycle.

BB.5 Placed applicants to nursing at A level results day: providers in England

Placed applicants to nursing by domicile (at A level results day)

| Domicile of applicant | 2009 | 2010 | 2011 | 2012 | 2013 | 2014 | 2015 | 2016 | 2017 | 2018 |
|-----------------------|--------|--------|--------|--------|--------|--------|--------|--------|--------|--------|
| England | 17,080 | 16,910 | 14,120 | 14,050 | 14,170 | 15,940 | 15,420 | 17,150 | 15,850 | 15,210 |
| Northern Ireland | 120 | 120 | 130 | 170 | 140 | 150 | 150 | 190 | 140 | 160 |
| Scotland | 40 | 30 | 30 | 40 | 20 | 40 | 20 | 30 | 20 | 10 |
| Wales | 180 | 230 | 230 | 290 | 240 | 270 | 290 | 280 | 270 | 260 |
| EU (excluding UK) | 140 | 260 | 280 | 230 | 260 | 250 | 270 | 300 | 190 | 120 |
| Not EU | 30 | 50 | 40 | 40 | 40 | 40 | 50 | 30 | 70 | 80 |

BB.6 Placed applicants to nursing at A level results day: providers in England

Selected applicant domiciles: difference between cycle and 2017 cycle (at A level results day)

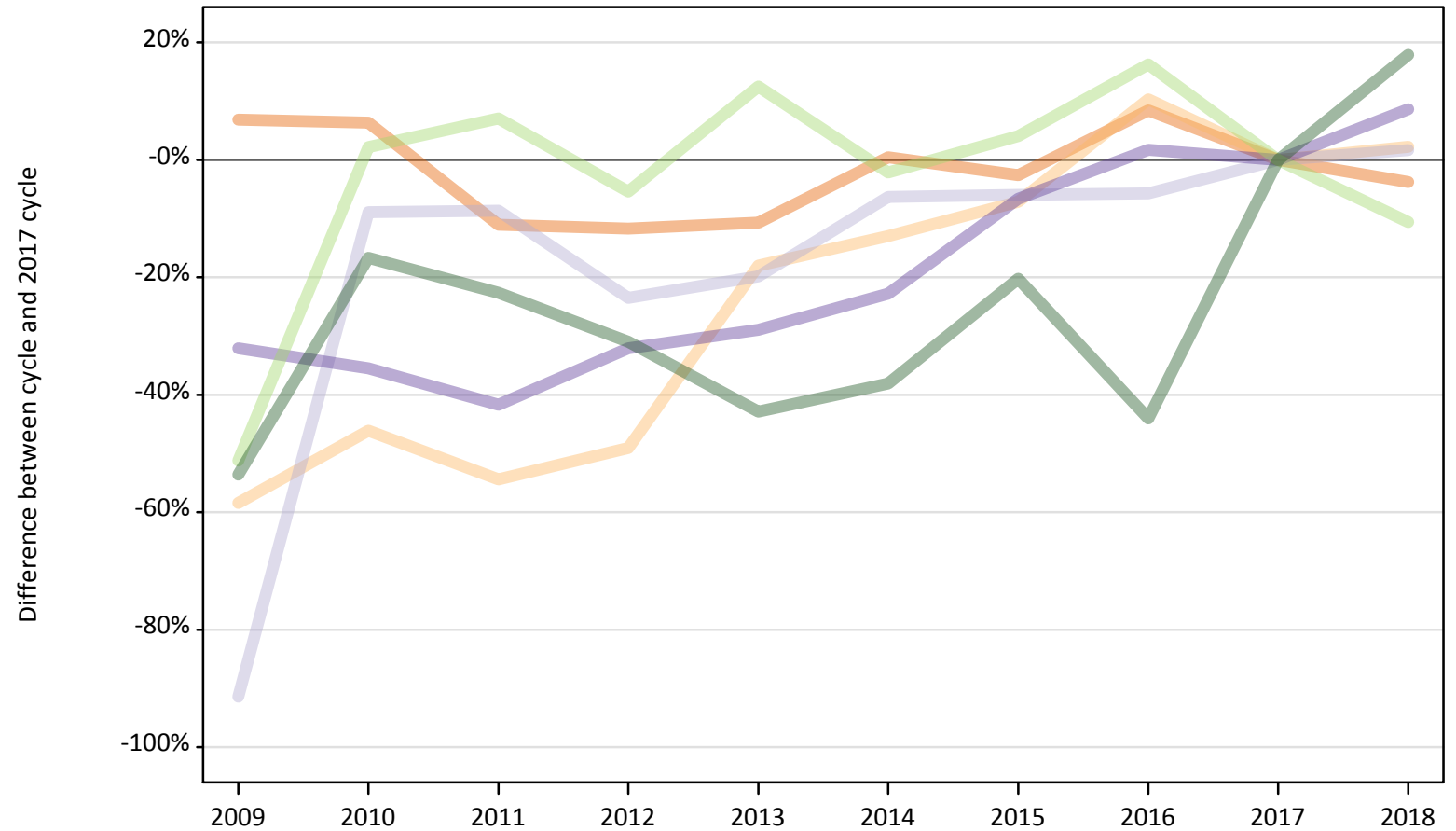
| Domicile of applicant | 2009 | 2010 | 2011 | 2012 | 2013 | 2014 | 2015 | 2016 | 2017 | 2018 |
|-----------------------|------|------|------|------|------|------|------|------|------|------|
| England | 8% | 7% | -11% | -11% | -11% | 1% | -3% | 8% | 0% | -4% |
| Northern Ireland | -20% | -17% | -13% | 15% | -3% | 1% | 6% | 30% | 0% | 10% |
| Scotland | 81% | 52% | 29% | 76% | 0% | 76% | 10% | 29% | 0% | -33% |
| Wales | -34% | -16% | -15% | 6% | -11% | -1% | 8% | 4% | 0% | -4% |
| EU (excluding UK) | -26% | 35% | 46% | 23% | 40% | 33% | 40% | 58% | 0% | -34% |
| Not EU | -51% | -21% | -37% | -36% | -45% | -36% | -22% | -49% | 0% | 25% |

Note: The percentage change is not recorded in the above table for groups with fewer than 10 placed applicants in that cycle or in the 2017 cycle.

BB.7 Placed applicants to nursing at A level results day: providers in the UK

Selected applicant domiciles: difference between cycle and 2017 cycle (at A level results day)

- England
- Northern Ireland
- Scotland
- Wales
- EU (excluding UK)
- Not EU



Note: The percentage change is not plotted in the above chart for groups with fewer than 30 placed applicants in any one cycle.

BB.8 Placed applicants to nursing at A level results day: providers in the UK

Placed applicants to nursing by domicile (at A level results day)

| Domicile of applicant | 2009 | 2010 | 2011 | 2012 | 2013 | 2014 | 2015 | 2016 | 2017 | 2018 |
|-----------------------|--------|--------|--------|--------|--------|--------|--------|--------|--------|--------|
| England | 17,200 | 17,130 | 14,320 | 14,220 | 14,380 | 16,170 | 15,680 | 17,460 | 16,100 | 15,490 |
| Northern Ireland | 370 | 480 | 410 | 460 | 730 | 780 | 830 | 990 | 900 | 920 |
| Scotland | 240 | 2,570 | 2,580 | 2,160 | 2,260 | 2,650 | 2,660 | 2,660 | 2,820 | 2,870 |
| Wales | 830 | 790 | 710 | 830 | 870 | 940 | 1,140 | 1,240 | 1,220 | 1,320 |
| EU (excluding UK) | 180 | 380 | 400 | 350 | 420 | 360 | 380 | 430 | 370 | 330 |
| Not EU | 40 | 70 | 70 | 60 | 50 | 50 | 70 | 50 | 80 | 100 |

BB.9 Placed applicants to nursing at A level results day: providers in the UK

Selected applicant domiciles: difference between cycle and 2017 cycle (at A level results day)

| Domicile of applicant | 2009 | 2010 | 2011 | 2012 | 2013 | 2014 | 2015 | 2016 | 2017 | 2018 |
|-----------------------|------|------|------|------|------|------|------|------|------|------|
| England | 7% | 6% | -11% | -12% | -11% | 0% | -3% | 8% | 0% | -4% |
| Northern Ireland | -58% | -46% | -54% | -49% | -18% | -13% | -7% | 10% | 0% | 2% |
| Scotland | -91% | -9% | -9% | -23% | -20% | -6% | -6% | -6% | 0% | 2% |
| Wales | -32% | -36% | -42% | -32% | -29% | -23% | -7% | 2% | 0% | 9% |
| EU (excluding UK) | -51% | 2% | 7% | -5% | 12% | -2% | 4% | 16% | 0% | -11% |
| Not EU | -54% | -17% | -23% | -31% | -43% | -38% | -20% | -44% | 0% | 18% |

Note: The percentage change is not recorded in the above table for groups with fewer than 10 placed applicants in that cycle or in the 2017 cycle.