

Daily Clearing Analysis: Age

Analysis at 00:05 on Thursday 16 August 2018 (A level results day)

C.1 Placed applicants by country of domicile and age group, 2018 cycle (A level results day)

Domicile of applicant	Age group				
	17 and under	18	19	20 to 24	25 and over
England	540	170,030	57,400	40,980	24,800
Northern Ireland	20	6,530	1,850	1,990	700
Scotland	490	14,400	4,360	7,790	6,140
Wales	20	9,030	2,820	2,340	1,740
UK	1,080	199,990	66,430	53,090	33,370

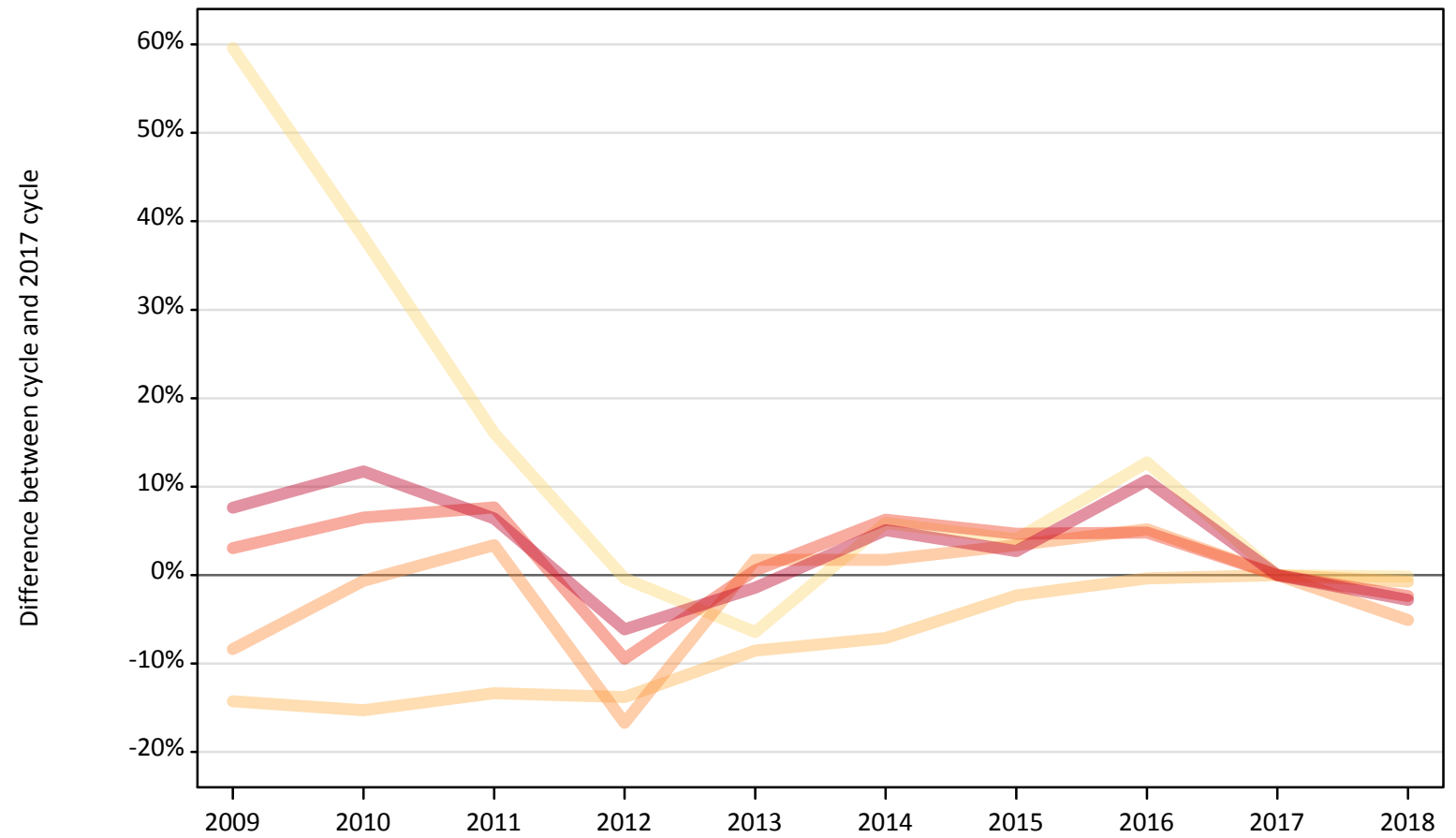
C.2 Proportion of 18 year old population placed by country of domicile, 2018 cycle (A level results day)

Domicile of applicant	Age group	2018
England	18	27.9%
Northern Ireland	18	28.1%
Scotland	18	25.9%
Wales	18	26.3%

C.3 Placed applicants from England by age group at A level results day

Selected age groups: difference between cycle and 2017 cycle

- 17 and under
- 18
- 19
- 20 to 24
- 25 and over



Note: The percentage change is not plotted in the above chart for groups with fewer than 30 placed applicants in any one cycle.

C.4 Placed applicants from England by age group at A level results day

All age groups

Domicile of applicant	Age group	2009	2010	2011	2012	2013	2014	2015	2016	2017	2018
England	17 and under	870	750	630	540	510	570	560	610	540	540
	18	146,870	145,150	148,450	147,700	156,690	159,140	167,390	170,700	171,330	170,030
	19	55,420	60,090	62,540	50,380	61,520	61,520	62,530	63,620	60,480	57,400
	20 to 24	43,250	44,710	45,190	38,010	42,210	44,610	43,940	43,990	41,980	40,980
	25 and over	27,460	28,510	27,150	23,950	25,150	26,810	26,210	28,250	25,520	24,800

C.5 Placed applicants from England by age group at A level results day

Selected age groups: difference between cycle and 2017 cycle

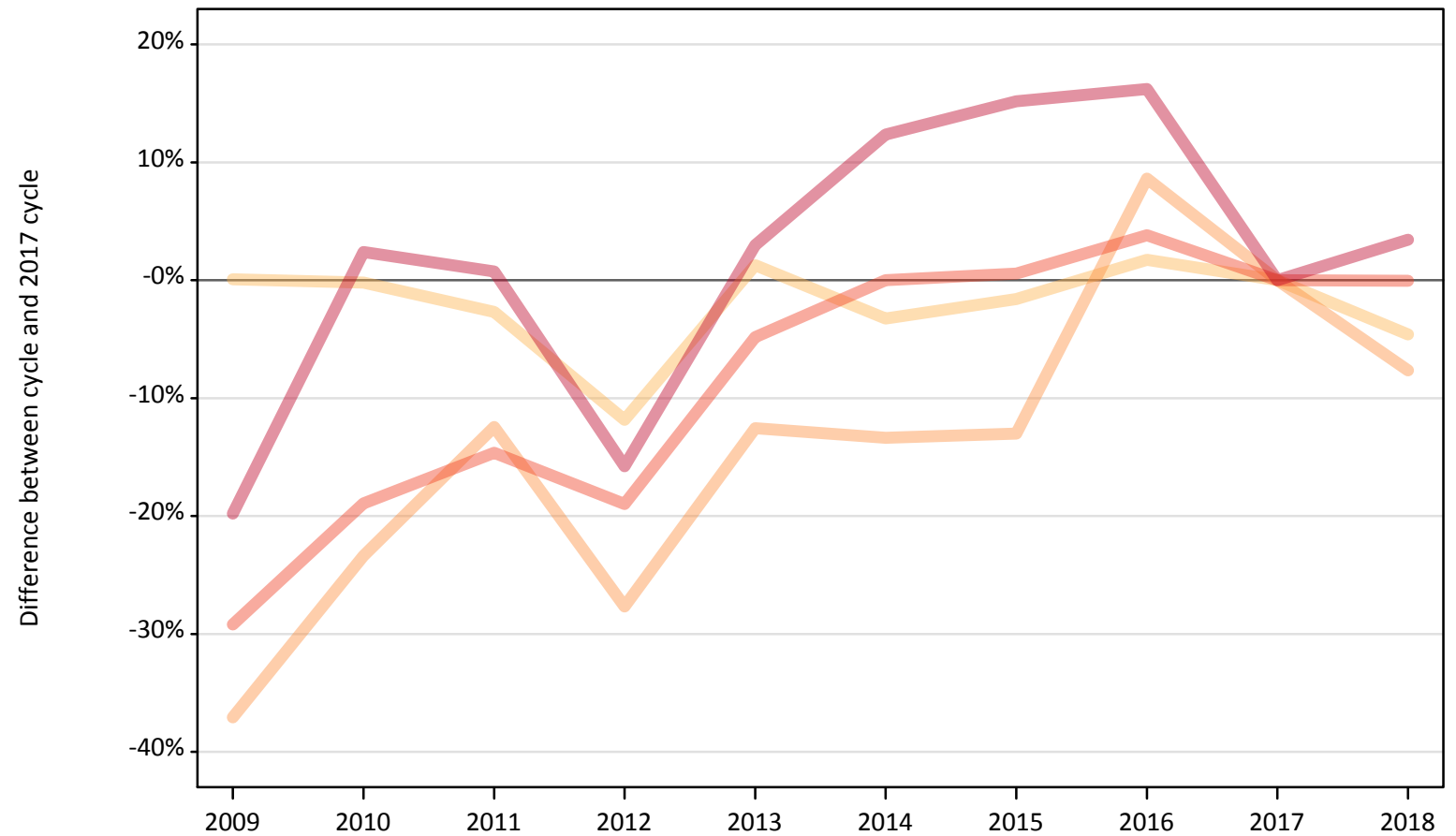
Domicile of applicant	Age group	2009	2010	2011	2012	2013	2014	2015	2016	2017	2018
England	17 and under	60%	38%	16%	-0%	-6%	6%	4%	13%	0%	-0%
	18	-14%	-15%	-13%	-14%	-9%	-7%	-2%	-0%	0%	-1%
	19	-8%	-1%	3%	-17%	2%	2%	3%	5%	0%	-5%
	20 to 24	3%	6%	8%	-9%	1%	6%	5%	5%	0%	-2%
	25 and over	8%	12%	6%	-6%	-1%	5%	3%	11%	0%	-3%

Note: The percentage change is not recorded in the above table for groups with fewer than 10 placed applicants in that cycle or in the 2017 cycle.

C.6 Placed applicants from Northern Ireland by age group at A level results day

Selected age groups: difference between cycle and 2017 cycle

- 17 and under
- 18
- 19
- 20 to 24
- 25 and over



Note: The percentage change is not plotted in the above chart for groups with fewer than 30 placed applicants in any one cycle.

C.7 Placed applicants from Northern Ireland by age group at A level results day

All age groups

Domicile of applicant	Age group	2009	2010	2011	2012	2013	2014	2015	2016	2017	2018
Northern Ireland	17 and under	40	30	30	40	20	20	20	30	20	20
	18	6,850	6,830	6,660	6,030	6,930	6,620	6,740	6,960	6,840	6,530
	19	1,260	1,530	1,750	1,450	1,750	1,730	1,740	2,170	2,000	1,850
	20 to 24	1,410	1,610	1,700	1,610	1,890	1,990	2,000	2,060	1,990	1,990
	25 and over	540	690	680	570	690	760	770	780	670	700

C.8 Placed applicants from Northern Ireland by age group at A level results day

Selected age groups: difference between cycle and 2017 cycle

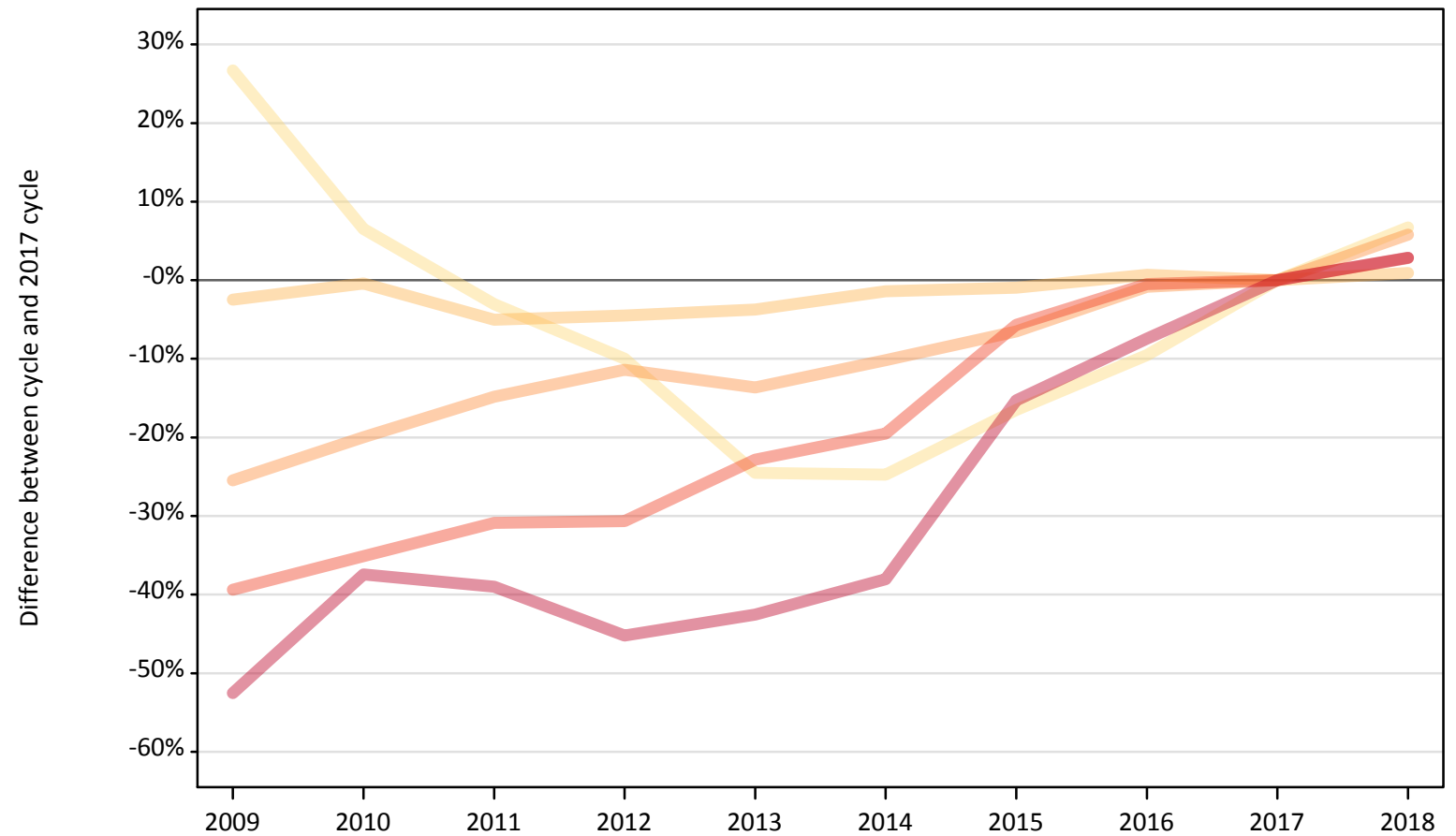
Domicile of applicant	Age group	2009	2010	2011	2012	2013	2014	2015	2016	2017	2018
Northern Ireland	17 and under	163%	94%	88%	119%	13%	0%	0%	69%	0%	44%
	18	0%	-0%	-3%	-12%	1%	-3%	-2%	2%	0%	-5%
	19	-37%	-23%	-12%	-28%	-13%	-13%	-13%	9%	0%	-8%
	20 to 24	-29%	-19%	-15%	-19%	-5%	0%	1%	4%	0%	-0%
	25 and over	-20%	2%	1%	-16%	3%	12%	15%	16%	0%	3%

Note: The percentage change is not recorded in the above table for groups with fewer than 10 placed applicants in that cycle or in the 2017 cycle.

C.9 Placed applicants from Scotland by age group at A level results day

Selected age groups: difference between cycle and 2017 cycle

- 17 and under
- 18
- 19
- 20 to 24
- 25 and over



Note: The percentage change is not plotted in the above chart for groups with fewer than 30 placed applicants in any one cycle.

C.10 Placed applicants from Scotland by age group at A level results day

All age groups

Domicile of applicant	Age group	2009	2010	2011	2012	2013	2014	2015	2016	2017	2018
Scotland	17 and under	580	490	450	420	350	350	390	420	460	490
	18	13,920	14,210	13,550	13,630	13,740	14,070	14,130	14,370	14,270	14,400
	19	3,070	3,300	3,510	3,650	3,560	3,700	3,850	4,090	4,120	4,360
	20 to 24	4,590	4,920	5,230	5,250	5,840	6,100	7,140	7,540	7,570	7,790
	25 and over	2,830	3,730	3,640	3,270	3,430	3,700	5,050	5,520	5,960	6,140

C.11 Placed applicants from Scotland by age group at A level results day

Selected age groups: difference between cycle and 2017 cycle

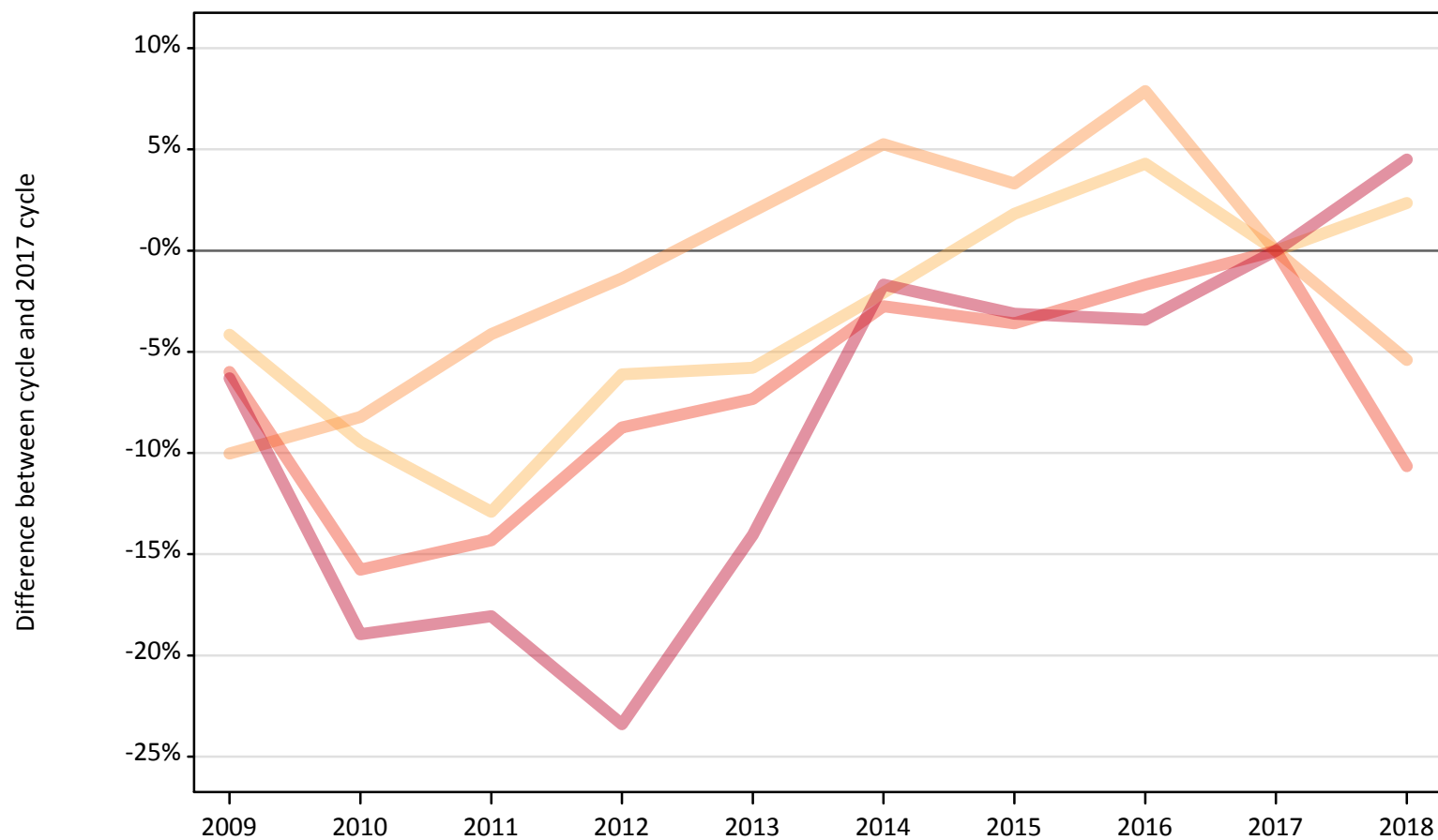
Domicile of applicant	Age group	2009	2010	2011	2012	2013	2014	2015	2016	2017	2018
Scotland	17 and under	27%	7%	-3%	-10%	-25%	-25%	-16%	-10%	0%	7%
	18	-2%	-0%	-5%	-4%	-4%	-1%	-1%	1%	0%	1%
	19	-25%	-20%	-15%	-11%	-14%	-10%	-7%	-1%	0%	6%
	20 to 24	-39%	-35%	-31%	-31%	-23%	-20%	-6%	-0%	0%	3%
	25 and over	-53%	-37%	-39%	-45%	-43%	-38%	-15%	-7%	0%	3%

Note: The percentage change is not recorded in the above table for groups with fewer than 10 placed applicants in that cycle or in the 2017 cycle.

C.12 Placed applicants from Wales by age group at A level results day

Selected age groups: difference between cycle and 2017 cycle

- 17 and under
- 18
- 19
- 20 to 24
- 25 and over



Note: The percentage change is not plotted in the above chart for groups with fewer than 30 placed applicants in any one cycle.

C.13 Placed applicants from Wales by age group at A level results day

All age groups

Domicile of applicant	Age group	2009	2010	2011	2012	2013	2014	2015	2016	2017	2018
Wales	17 and under	40	30	20	20	20	20	10	20	10	20
	18	8,460	7,990	7,680	8,280	8,310	8,640	8,980	9,200	8,820	9,030
	19	2,680	2,740	2,860	2,940	3,040	3,140	3,080	3,220	2,980	2,820
	20 to 24	2,460	2,210	2,250	2,390	2,430	2,550	2,530	2,580	2,620	2,340
	25 and over	1,560	1,350	1,370	1,280	1,430	1,640	1,620	1,610	1,670	1,740

C.14 Placed applicants from Wales by age group at A level results day

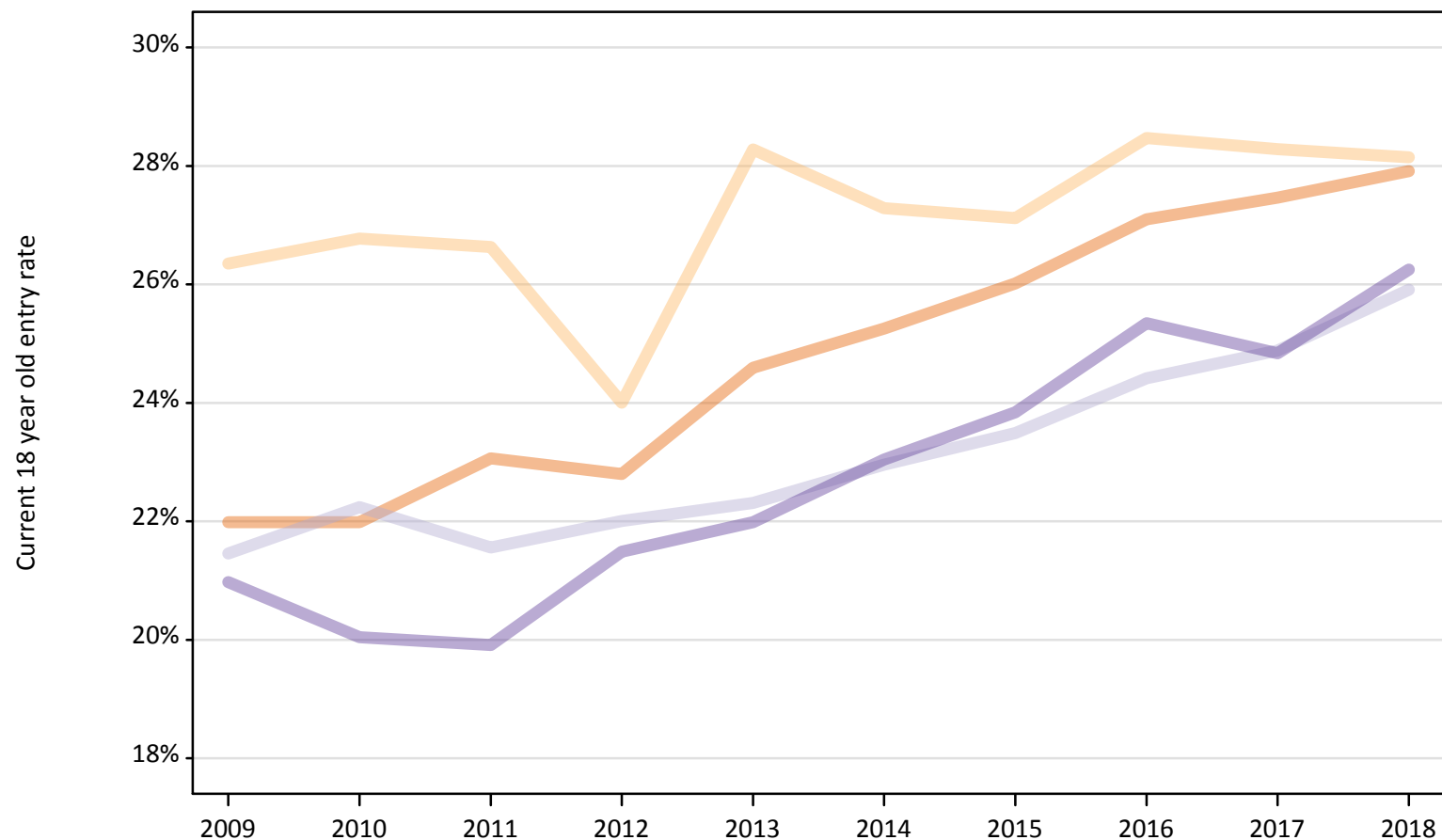
Selected age groups: difference between cycle and 2017 cycle

Domicile of applicant	Age group	2009	2010	2011	2012	2013	2014	2015	2016	2017	2018
Wales	17 and under	169%	131%	85%	23%	69%	46%	8%	54%	0%	54%
	18	-4%	-9%	-13%	-6%	-6%	-2%	2%	4%	0%	2%
	19	-10%	-8%	-4%	-1%	2%	5%	3%	8%	0%	-5%
	20 to 24	-6%	-16%	-14%	-9%	-7%	-3%	-4%	-2%	0%	-11%
	25 and over	-6%	-19%	-18%	-23%	-14%	-2%	-3%	-3%	0%	4%

Note: The percentage change is not recorded in the above table for groups with fewer than 10 placed applicants in that cycle or in the 2017 cycle.

C.15 Entry rates for 18 year olds by UK country of domicile: A level results day

Placed 18 year old applicants as a proportion of the 18 year old population



C.16 Entry rates for 18 year olds by UK country of domicile: A level results day

Placed 18 year old applicants as a proportion of the 18 year old population

Domicile of applicant	Age group	2009	2010	2011	2012	2013	2014	2015	2016	2017	2018
England	18	22.0%	22.0%	23.1%	22.8%	24.6%	25.3%	26.0%	27.1%	27.5%	27.9%
Northern Ireland	18	26.3%	26.8%	26.6%	24.0%	28.3%	27.3%	27.1%	28.5%	28.3%	28.1%
Scotland	18	21.5%	22.2%	21.6%	22.0%	22.3%	23.0%	23.5%	24.4%	24.9%	25.9%
Wales	18	21.0%	20.0%	19.9%	21.5%	22.0%	23.0%	23.8%	25.3%	24.8%	26.3%