

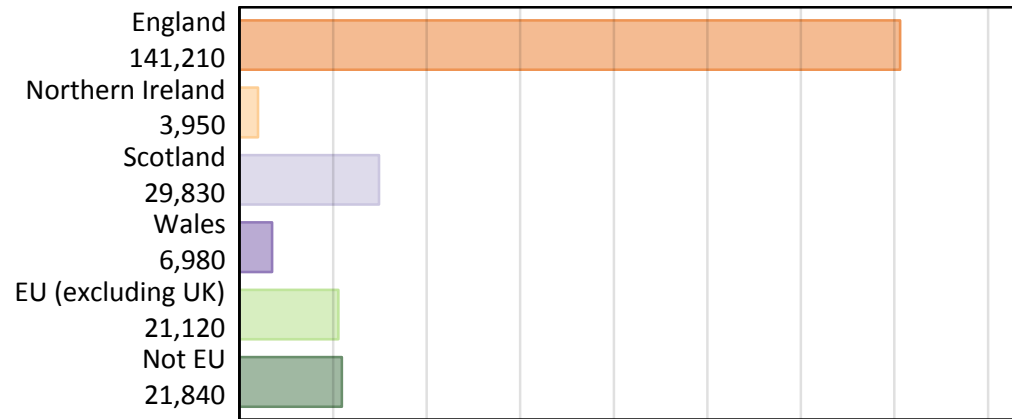
Daily Clearing Analysis: Country

Analysis at 00:05 on Tuesday 7 August 2018 (SQA results day)

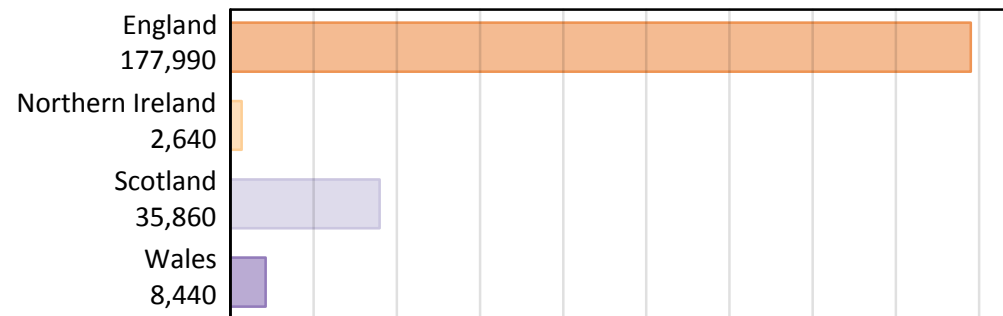
B.1 Placed applicants by country of provider and domicile, 2018 cycle

Domicile of applicant	Country of provider				
	England	Northern Ireland	Scotland	Wales	UK
England	137,110	60	1,160	2,880	141,210
Northern Ireland	1,380	2,290	230	40	3,950
Scotland	810	20	28,970	20	29,830
Wales	2,840	0	40	4,100	6,980
EU (excluding UK)	16,870	100	3,310	840	21,120
Not EU	18,970	170	2,140	570	21,840
All	177,990	2,640	35,860	8,440	224,920

B.2 Placed applicants by domicile group



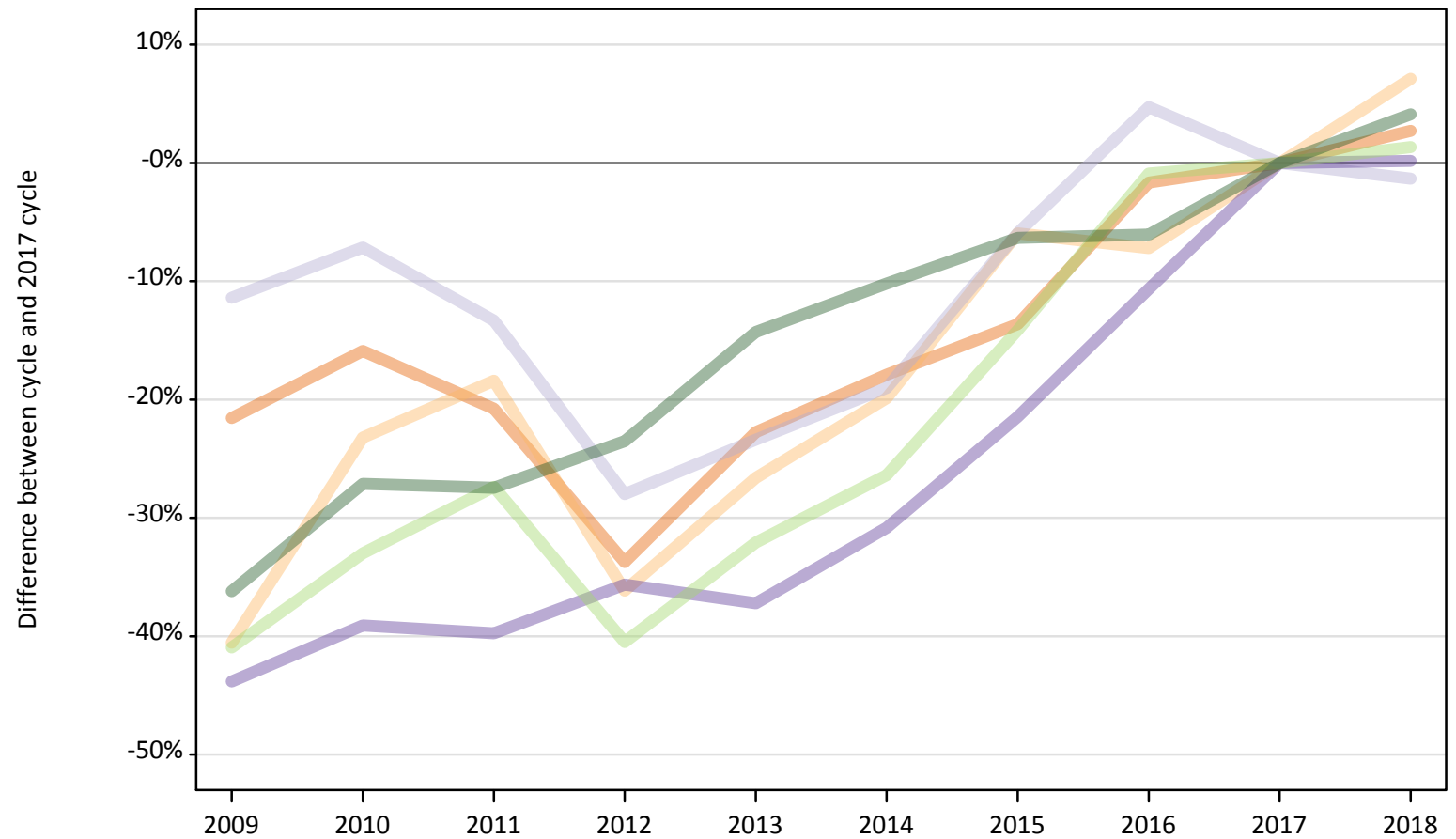
B.3 Placed applicants by country of provider



B.4 Placed applicants at SQA results day: providers in England

Selected applicant domiciles: difference between cycle and 2017 cycle (at SQA results day)

- England
- Northern Ireland
- Scotland
- Wales
- EU (excluding UK)
- Not EU



Note: The percentage change is not plotted in the above chart for groups with fewer than 30 placed applicants in any one cycle.

B.5 Placed applicants at SQA results day: providers in England

Placed applicants by domicile (at SQA results day)

Domicile of applicant	2009	2010	2011	2012	2013	2014	2015	2016	2017	2018
England	104,700	112,270	105,760	88,450	103,110	109,600	115,300	131,270	133,490	137,110
Northern Ireland	770	990	1,050	830	950	1,040	1,220	1,200	1,290	1,380
Scotland	730	770	720	590	630	670	780	860	830	810
Wales	1,590	1,730	1,710	1,820	1,780	1,960	2,220	2,530	2,830	2,840
EU (excluding UK)	9,830	11,160	12,090	9,910	11,310	12,250	14,300	16,500	16,650	16,870
Not EU	11,620	13,270	13,210	13,930	15,610	16,360	17,060	17,110	18,220	18,970

B.6 Placed applicants at SQA results day: providers in England

Selected applicant domiciles: difference between cycle and 2017 cycle (at SQA results day)

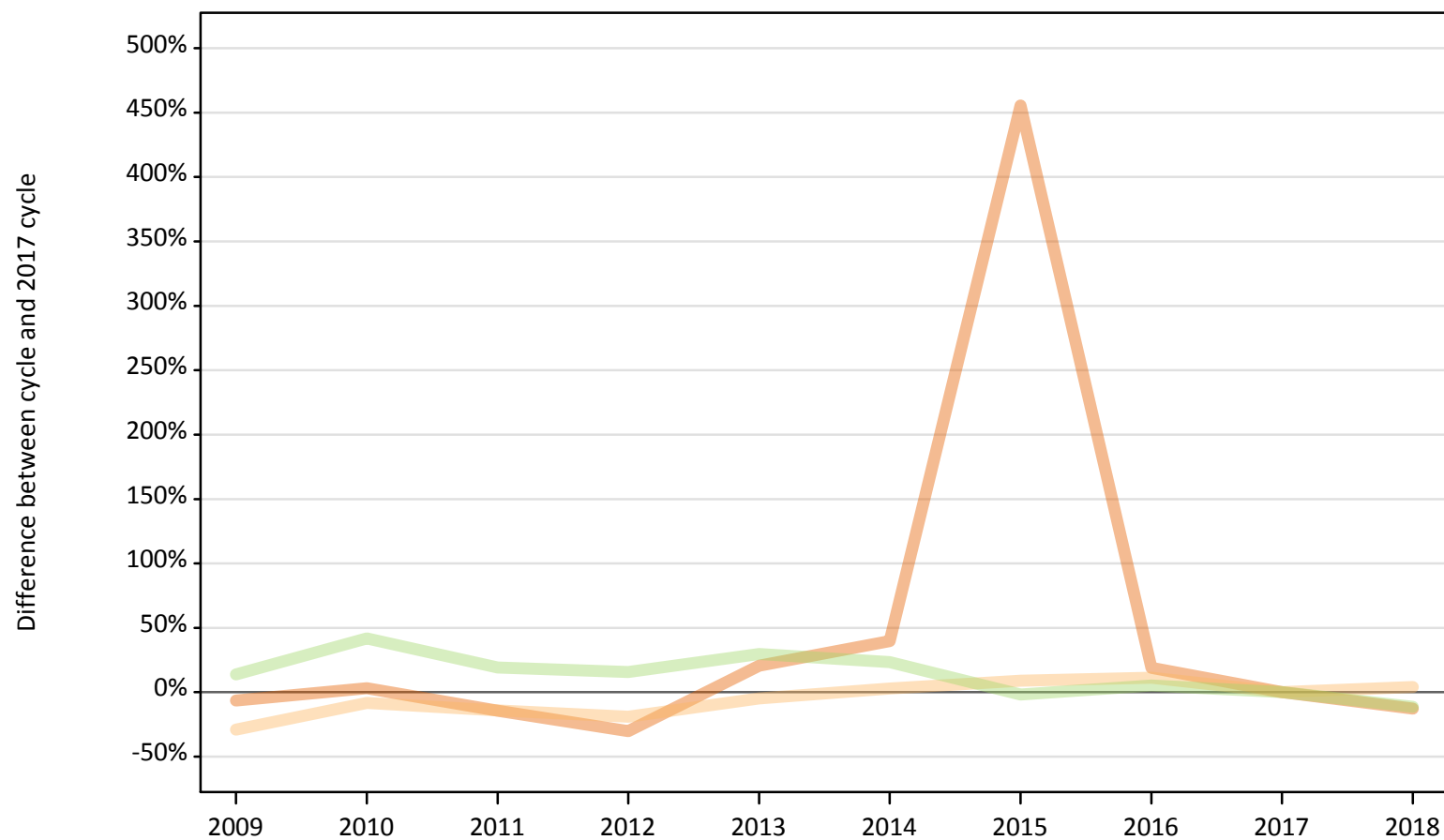
Domicile of applicant	2009	2010	2011	2012	2013	2014	2015	2016	2017	2018
England	-22%	-16%	-21%	-34%	-23%	-18%	-14%	-2%	0%	3%
Northern Ireland	-41%	-23%	-18%	-36%	-27%	-20%	-6%	-7%	0%	7%
Scotland	-11%	-7%	-13%	-28%	-23%	-19%	-6%	5%	0%	-1%
Wales	-44%	-39%	-40%	-36%	-37%	-31%	-21%	-11%	0%	0%
EU (excluding UK)	-41%	-33%	-27%	-40%	-32%	-26%	-14%	-1%	0%	1%
Not EU	-36%	-27%	-27%	-24%	-14%	-10%	-6%	-6%	0%	4%

Note: The percentage change is not recorded in the above table for groups with fewer than 10 placed applicants in that cycle or in the 2017 cycle.

B.7 Placed applicants at SQA results day: providers in Northern Ireland

Selected applicant domiciles: difference between cycle and 2017 cycle (at SQA results day)

- England
- Northern Ireland
- Scotland
- Wales
- EU (excluding UK)
- Not EU



Note: The percentage change is not plotted in the above chart for groups with fewer than 30 placed applicants in any one cycle.

B.8 Placed applicants at SQA results day: providers in Northern Ireland

Placed applicants by domicile (at SQA results day)

Domicile of applicant	2009	2010	2011	2012	2013	2014	2015	2016	2017	2018
England	60	70	50	40	80	90	350	80	60	60
Northern Ireland	1,570	2,020	1,900	1,790	2,100	2,270	2,400	2,450	2,210	2,290
Scotland	10	10	10	20	10	10	10	10	10	20
Wales	10	0	0	0	0	0	0	0	0	0
EU (excluding UK)	130	160	140	130	150	140	110	120	120	100
Not EU	30	40	70	100	120	130	90	140	130	170

B.9 Placed applicants at SQA results day: providers in Northern Ireland

Selected applicant domiciles: difference between cycle and 2017 cycle (at SQA results day)

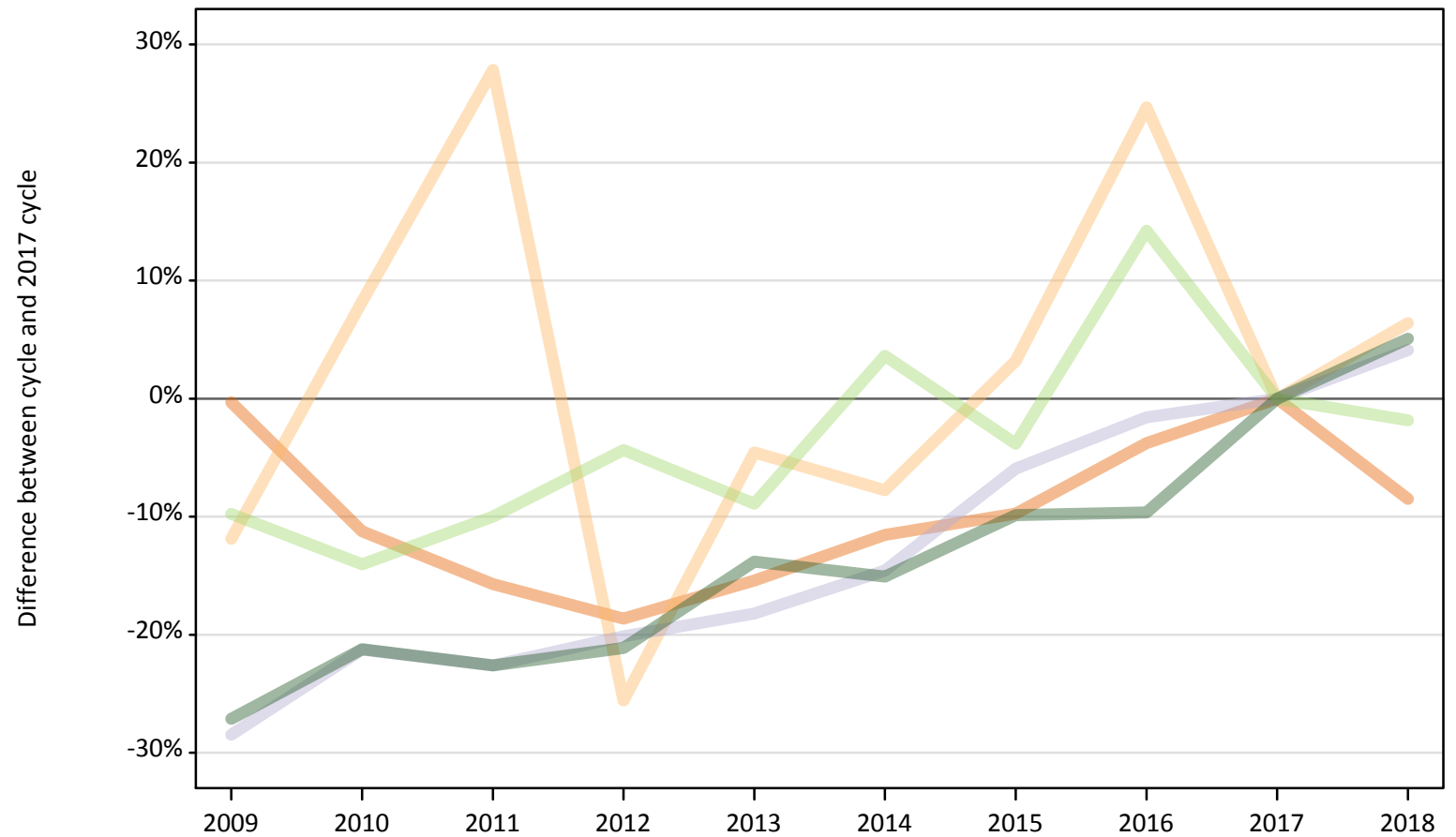
Domicile of applicant	2009	2010	2011	2012	2013	2014	2015	2016	2017	2018
England	-6%	3%	-14%	-30%	21%	40%	456%	19%	0%	-13%
Northern Ireland	-29%	-8%	-14%	-19%	-5%	3%	9%	11%	0%	4%
Scotland	-21%	-21%	-29%	21%	-57%	-57%	-36%	-14%	0%	7%
Wales										
EU (excluding UK)	14%	42%	19%	16%	30%	23%	-2%	5%	0%	-11%
Not EU	-78%	-72%	-44%	-23%	-8%	0%	-30%	11%	0%	33%

Note: The percentage change is not recorded in the above table for groups with fewer than 10 placed applicants in that cycle or in the 2017 cycle.

B.10 Placed applicants at SQA results day: providers in Scotland

Selected applicant domiciles: difference between cycle and 2017 cycle (at SQA results day)

- England
- Northern Ireland
- Scotland
- Wales
- EU (excluding UK)
- Not EU



Note: The percentage change is not plotted in the above chart for groups with fewer than 30 placed applicants in any one cycle.

B.11 Placed applicants at SQA results day: providers in Scotland

Placed applicants by domicile (at SQA results day)

Domicile of applicant	2009	2010	2011	2012	2013	2014	2015	2016	2017	2018
England	1,270	1,130	1,070	1,040	1,080	1,130	1,150	1,220	1,270	1,160
Northern Ireland	190	240	280	160	210	200	230	270	220	230
Scotland	19,900	21,910	21,540	22,220	22,770	23,780	26,180	27,390	27,830	28,970
Wales	40	30	30	30	30	30	30	40	30	40
EU (excluding UK)	3,040	2,900	3,030	3,220	3,070	3,490	3,240	3,850	3,370	3,310
Not EU	1,480	1,600	1,580	1,610	1,750	1,730	1,830	1,840	2,040	2,140

B.12 Placed applicants at SQA results day: providers in Scotland

Selected applicant domiciles: difference between cycle and 2017 cycle (at SQA results day)

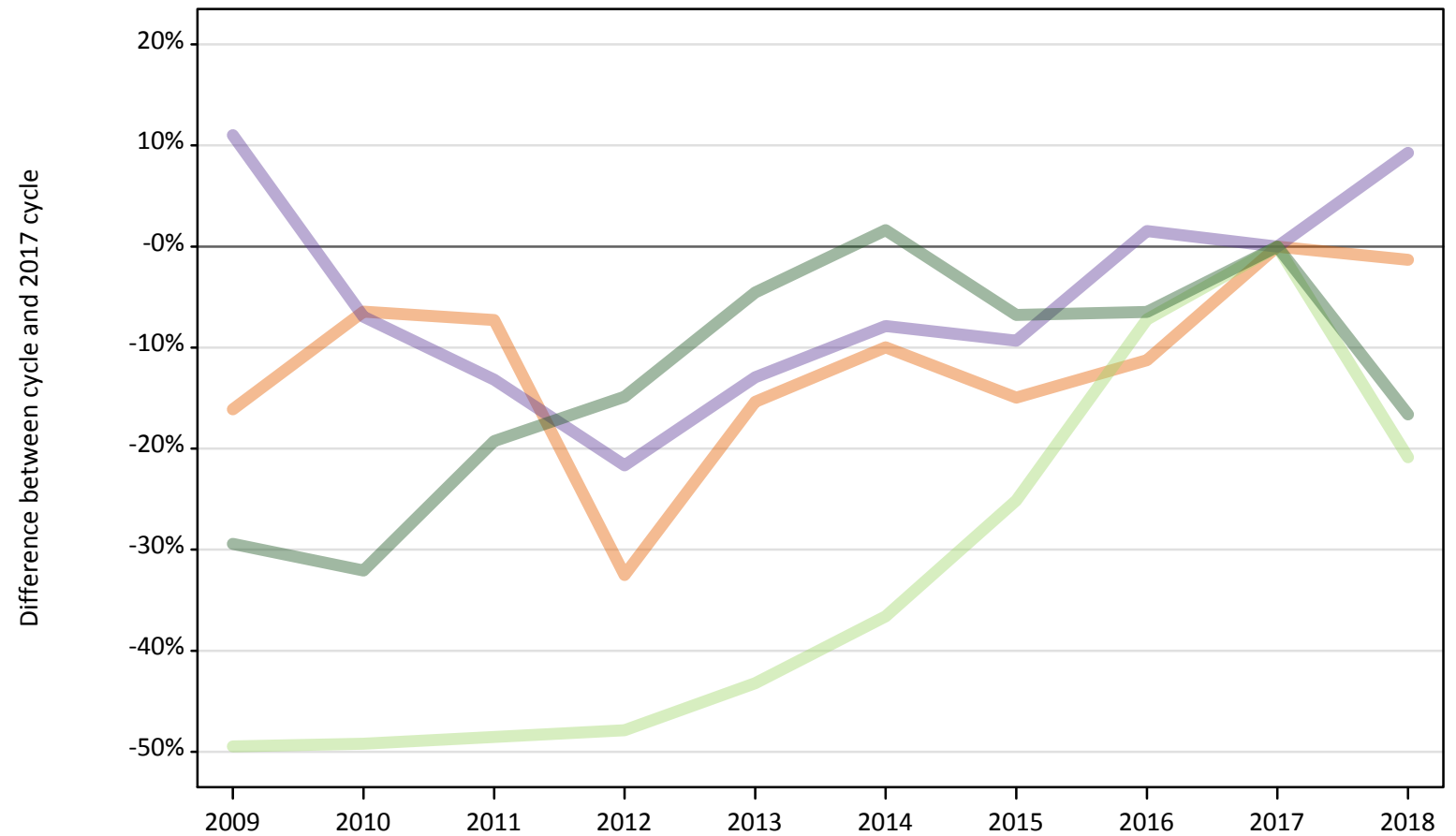
Domicile of applicant	2009	2010	2011	2012	2013	2014	2015	2016	2017	2018
England	-0%	-11%	-16%	-19%	-15%	-12%	-10%	-4%	0%	-8%
Northern Ireland	-12%	8%	28%	-26%	-5%	-8%	3%	25%	0%	6%
Scotland	-28%	-21%	-23%	-20%	-18%	-15%	-6%	-2%	0%	4%
Wales	38%	-7%	3%	-7%	-7%	-7%	-7%	41%	0%	38%
EU (excluding UK)	-10%	-14%	-10%	-4%	-9%	4%	-4%	14%	0%	-2%
Not EU	-27%	-21%	-23%	-21%	-14%	-15%	-10%	-10%	0%	5%

Note: The percentage change is not recorded in the above table for groups with fewer than 10 placed applicants in that cycle or in the 2017 cycle.

B.13 Placed applicants at SQA results day: providers in Wales

Selected applicant domiciles: difference between cycle and 2017 cycle (at SQA results day)

- England
- Northern Ireland
- Scotland
- Wales
- EU (excluding UK)
- Not EU



Note: The percentage change is not plotted in the above chart for groups with fewer than 30 placed applicants in any one cycle.

B.14 Placed applicants at SQA results day: providers in Wales

Placed applicants by domicile (at SQA results day)

Domicile of applicant	2009	2010	2011	2012	2013	2014	2015	2016	2017	2018
England	2,450	2,730	2,700	1,970	2,470	2,630	2,480	2,590	2,920	2,880
Northern Ireland	30	50	60	40	50	40	40	50	40	40
Scotland	20	30	30	20	30	30	20	30	30	20
Wales	4,160	3,490	3,260	2,940	3,270	3,460	3,400	3,810	3,750	4,100
EU (excluding UK)	530	540	540	550	600	670	790	980	1,060	840
Not EU	480	460	550	580	650	690	630	640	680	570

B.15 Placed applicants at SQA results day: providers in Wales

Selected applicant domiciles: difference between cycle and 2017 cycle (at SQA results day)

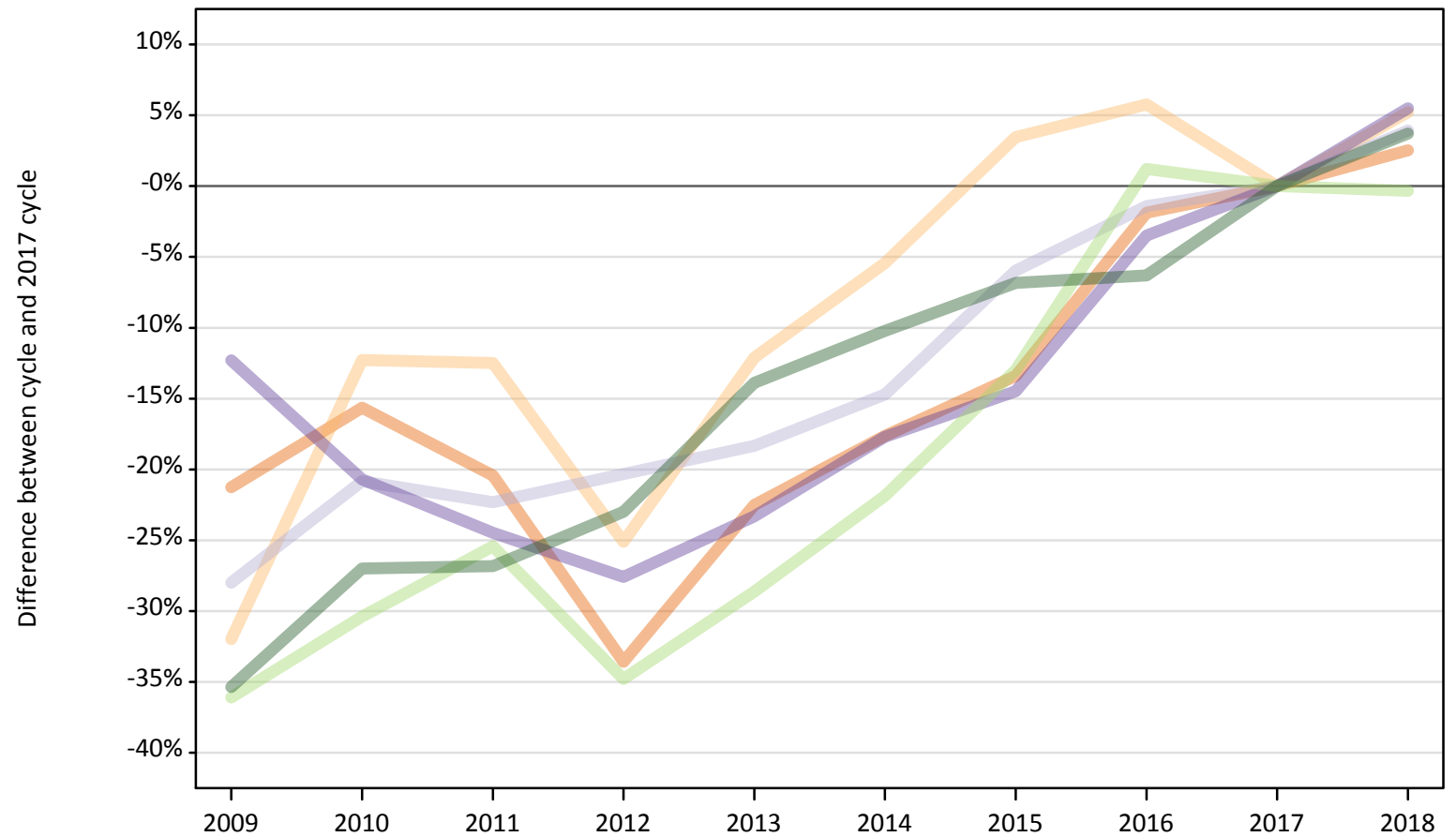
Domicile of applicant	2009	2010	2011	2012	2013	2014	2015	2016	2017	2018
England	-16%	-6%	-7%	-33%	-15%	-10%	-15%	-11%	0%	-1%
Northern Ireland	-30%	13%	45%	-3%	13%	10%	3%	25%	0%	5%
Scotland	-28%	3%	3%	-21%	3%	-3%	-24%	-14%	0%	-17%
Wales	11%	-7%	-13%	-22%	-13%	-8%	-9%	2%	0%	9%
EU (excluding UK)	-49%	-49%	-49%	-48%	-43%	-37%	-25%	-7%	0%	-21%
Not EU	-29%	-32%	-19%	-15%	-5%	2%	-7%	-6%	0%	-17%

Note: The percentage change is not recorded in the above table for groups with fewer than 10 placed applicants in that cycle or in the 2017 cycle.

B.16 Placed applicants at SQA results day: providers in the UK

Selected applicant domiciles: difference between cycle and 2017 cycle (at SQA results day)

- England
- Northern Ireland
- Scotland
- Wales
- EU (excluding UK)
- Not EU



Note: The percentage change is not plotted in the above chart for groups with fewer than 30 placed applicants in any one cycle.

B.17 Placed applicants at SQA results day: providers in the UK

Placed applicants by domicile (at SQA results day)

Domicile of applicant	2009	2010	2011	2012	2013	2014	2015	2016	2017	2018
England	108,470	116,200	109,590	91,490	106,730	113,440	119,280	135,150	137,740	141,210
Northern Ireland	2,560	3,300	3,290	2,810	3,300	3,550	3,890	3,970	3,760	3,950
Scotland	20,670	22,720	22,290	22,860	23,430	24,480	26,990	28,290	28,700	29,830
Wales	5,800	5,240	5,000	4,790	5,070	5,440	5,660	6,380	6,610	6,980
EU (excluding UK)	13,540	14,750	15,800	13,820	15,120	16,560	18,440	21,450	21,190	21,120
Not EU	13,610	15,370	15,410	16,220	18,140	18,910	19,620	19,730	21,060	21,840

B.18 Placed applicants at SQA results day: providers in the UK

Selected applicant domiciles: difference between cycle and 2017 cycle (at SQA results day)

Domicile of applicant	2009	2010	2011	2012	2013	2014	2015	2016	2017	2018
England	-21%	-16%	-20%	-34%	-23%	-18%	-13%	-2%	0%	3%
Northern Ireland	-32%	-12%	-12%	-25%	-12%	-5%	3%	6%	0%	5%
Scotland	-28%	-21%	-22%	-20%	-18%	-15%	-6%	-1%	0%	4%
Wales	-12%	-21%	-24%	-28%	-23%	-18%	-14%	-3%	0%	5%
EU (excluding UK)	-36%	-30%	-25%	-35%	-29%	-22%	-13%	1%	0%	-0%
Not EU	-35%	-27%	-27%	-23%	-14%	-10%	-7%	-6%	0%	4%

Note: The percentage change is not recorded in the above table for groups with fewer than 10 placed applicants in that cycle or in the 2017 cycle.