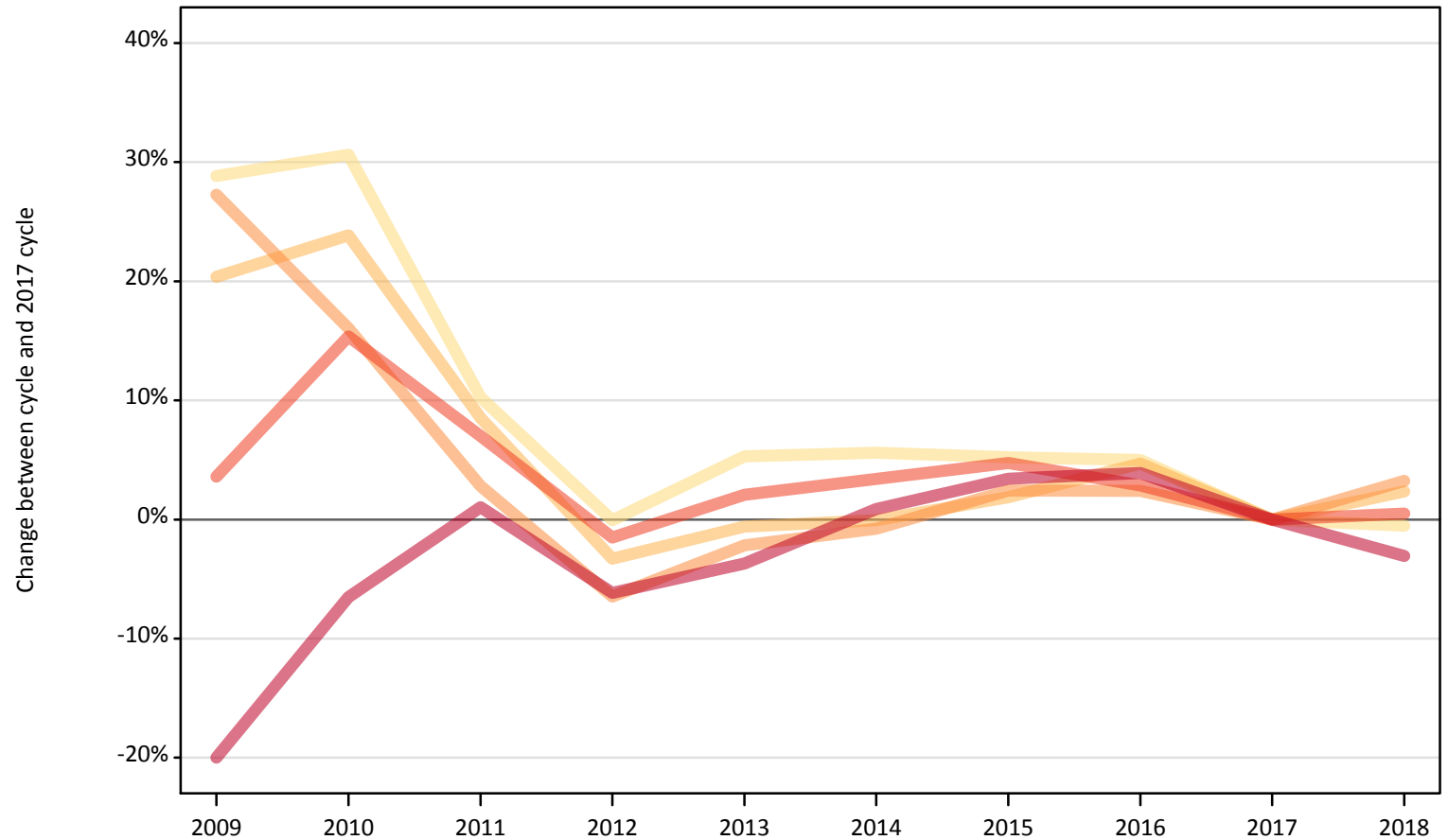


June Deadline Analysis: Applications

Applicants by number of applications at the 30 June deadline

I.4.1 Applicants by domicile and number of applications made : All domiciles Difference between cycle and 2017 cycle

- 1 application
- 2 applications
- 3 applications
- 4 applications
- 5 applications



Note: The percentage change is not plotted in the above chart for groups with fewer than 500 applications in any one cycle.

I.4.2 Applicants by domicile and number of applications made : All domiciles

Domicile and number of applications made by applicant		2009	2010	2011	2012	2013	2014	2015	2016	2017	2018
All domiciles	1 application	81,230	82,360	69,510	63,000	66,390	66,590	66,350	66,200	63,050	62,730
	2 applications	31,310	32,220	28,230	25,150	25,850	25,990	26,490	27,230	26,010	26,620
	3 applications	43,740	39,890	35,340	32,150	33,630	34,100	35,210	35,200	34,370	35,480
	4 applications	57,630	64,180	59,530	54,790	56,790	57,520	58,270	57,220	55,630	55,910
	5 applications	376,610	439,920	475,540	441,610	453,240	474,830	486,730	489,040	470,640	456,220
	All	590,530	658,560	668,150	616,700	635,910	659,030	673,040	674,890	649,700	636,960

I.4.3 Applicants by domicile and number of applications made : All domiciles

Difference between cycle and 2017 cycle

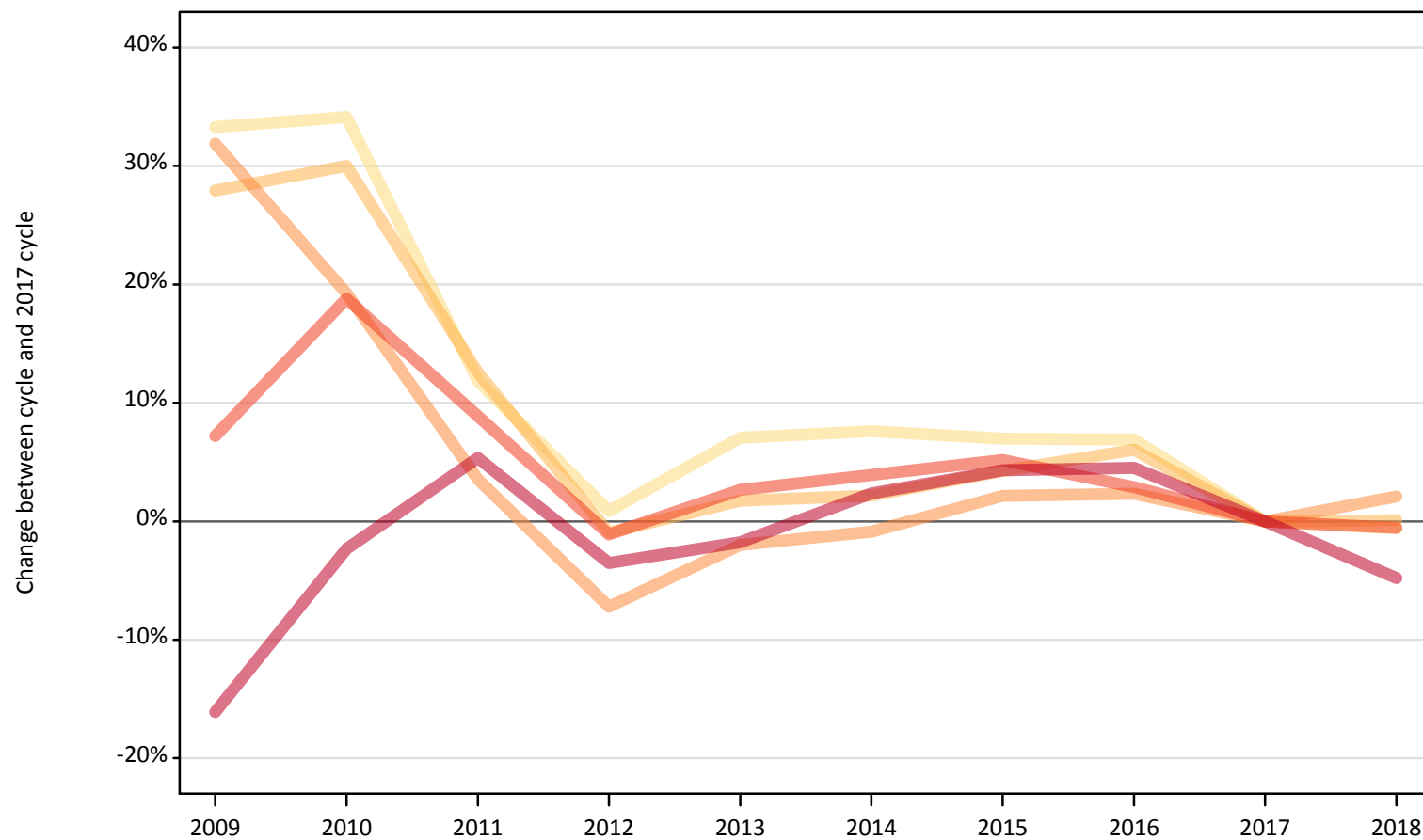
Domicile and number of applications made by applicant		2009	2010	2011	2012	2013	2014	2015	2016	2017	2018
All domiciles	1 application	29%	31%	10%	-0%	5%	6%	5%	5%	0%	-1%
	2 applications	20%	24%	9%	-3%	-1%	-0%	2%	5%	0%	2%
	3 applications	27%	16%	3%	-6%	-2%	-1%	2%	2%	0%	3%
	4 applications	4%	15%	7%	-2%	2%	3%	5%	3%	0%	1%
	5 applications	-20%	-7%	1%	-6%	-4%	1%	3%	4%	0%	-3%
	All	-9%	1%	3%	-5%	-2%	1%	4%	4%	0%	-2%

Note: The percentage change is not recorded in the above table for groups with fewer than 10 applicants in that cycle or in the 2017 cycle.

I.4.4 Applicants by domicile and number of applications made : UK

Difference between cycle and 2017 cycle

- 1 application
- 2 applications
- 3 applications
- 4 applications
- 5 applications



Note: The percentage change is not plotted in the above chart for groups with fewer than 500 applications in any one cycle.

I.4.5 Applicants by domicile and number of applications made : UK

Domicile and number of applications made by applicant		2009	2010	2011	2012	2013	2014	2015	2016	2017	2018
UK	1 application	69,990	70,430	58,740	52,980	56,210	56,510	56,180	56,140	52,510	52,200
	2 applications	27,580	28,030	24,270	21,360	21,940	22,030	22,480	22,860	21,560	21,580
	3 applications	37,880	34,250	29,740	26,650	28,150	28,470	29,340	29,390	28,720	29,320
	4 applications	50,330	55,770	51,130	46,440	48,200	48,800	49,380	48,300	46,950	46,690
	5 applications	318,730	371,080	400,240	366,550	373,170	388,780	396,210	397,050	379,870	361,660
	All	504,520	559,570	564,120	513,970	527,670	544,580	553,590	553,740	529,620	511,460

I.4.6 Applicants by domicile and number of applications made : UK

Difference between cycle and 2017 cycle

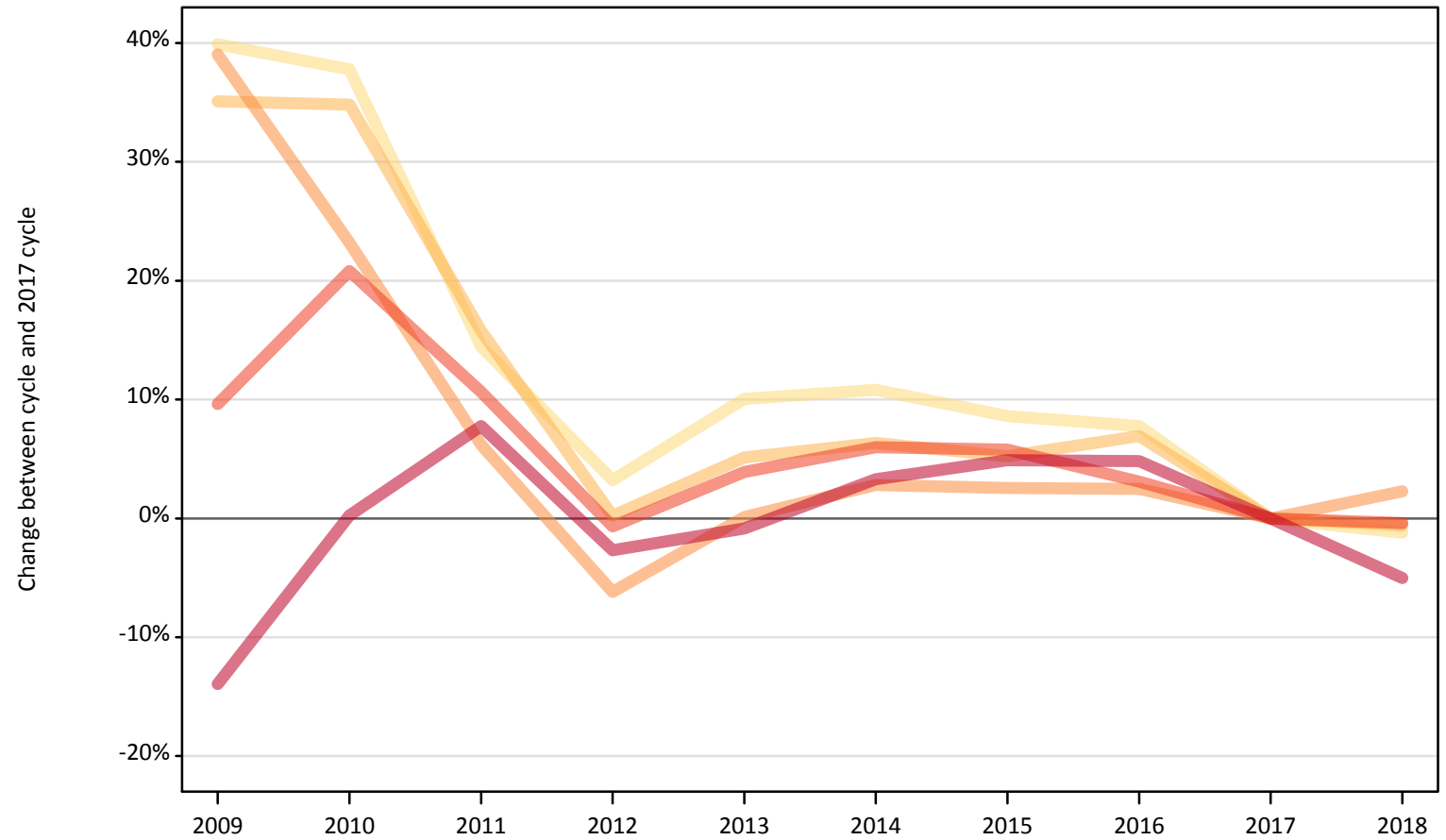
Domicile and number of applications made by applicant		2009	2010	2011	2012	2013	2014	2015	2016	2017	2018
UK	1 application	33%	34%	12%	1%	7%	8%	7%	7%	0%	-1%
	2 applications	28%	30%	13%	-1%	2%	2%	4%	6%	0%	0%
	3 applications	32%	19%	4%	-7%	-2%	-1%	2%	2%	0%	2%
	4 applications	7%	19%	9%	-1%	3%	4%	5%	3%	0%	-1%
	5 applications	-16%	-2%	5%	-4%	-2%	2%	4%	5%	0%	-5%
	All	-5%	6%	7%	-3%	-0%	3%	5%	5%	0%	-3%

Note: The percentage change is not recorded in the above table for groups with fewer than 10 applicants in that cycle or in the 2017 cycle.

I.4.7 Applicants by domicile and number of applications made : England

Difference between cycle and 2017 cycle

- 1 application
- 2 applications
- 3 applications
- 4 applications
- 5 applications



Note: The percentage change is not plotted in the above chart for groups with fewer than 500 applications in any one cycle.

I.4.8 Applicants by domicile and number of applications made : England

Domicile and number of applications made by applicant		2009	2010	2011	2012	2013	2014	2015	2016	2017	2018
England	1 application	59,580	58,690	48,750	43,970	46,880	47,200	46,260	45,910	42,600	42,090
	2 applications	22,120	22,080	18,960	16,410	17,220	17,420	17,240	17,510	16,380	16,280
	3 applications	30,570	27,080	23,350	20,630	22,010	22,610	22,550	22,530	21,990	22,490
	4 applications	41,350	45,560	41,730	37,460	39,200	39,980	39,900	38,880	37,720	37,570
	5 applications	274,720	319,990	343,980	310,620	316,490	329,720	334,800	334,590	319,180	303,180
	All	428,350	473,400	476,770	429,100	441,790	456,920	460,740	459,430	437,860	421,610

I.4.9 Applicants by domicile and number of applications made : England

Difference between cycle and 2017 cycle

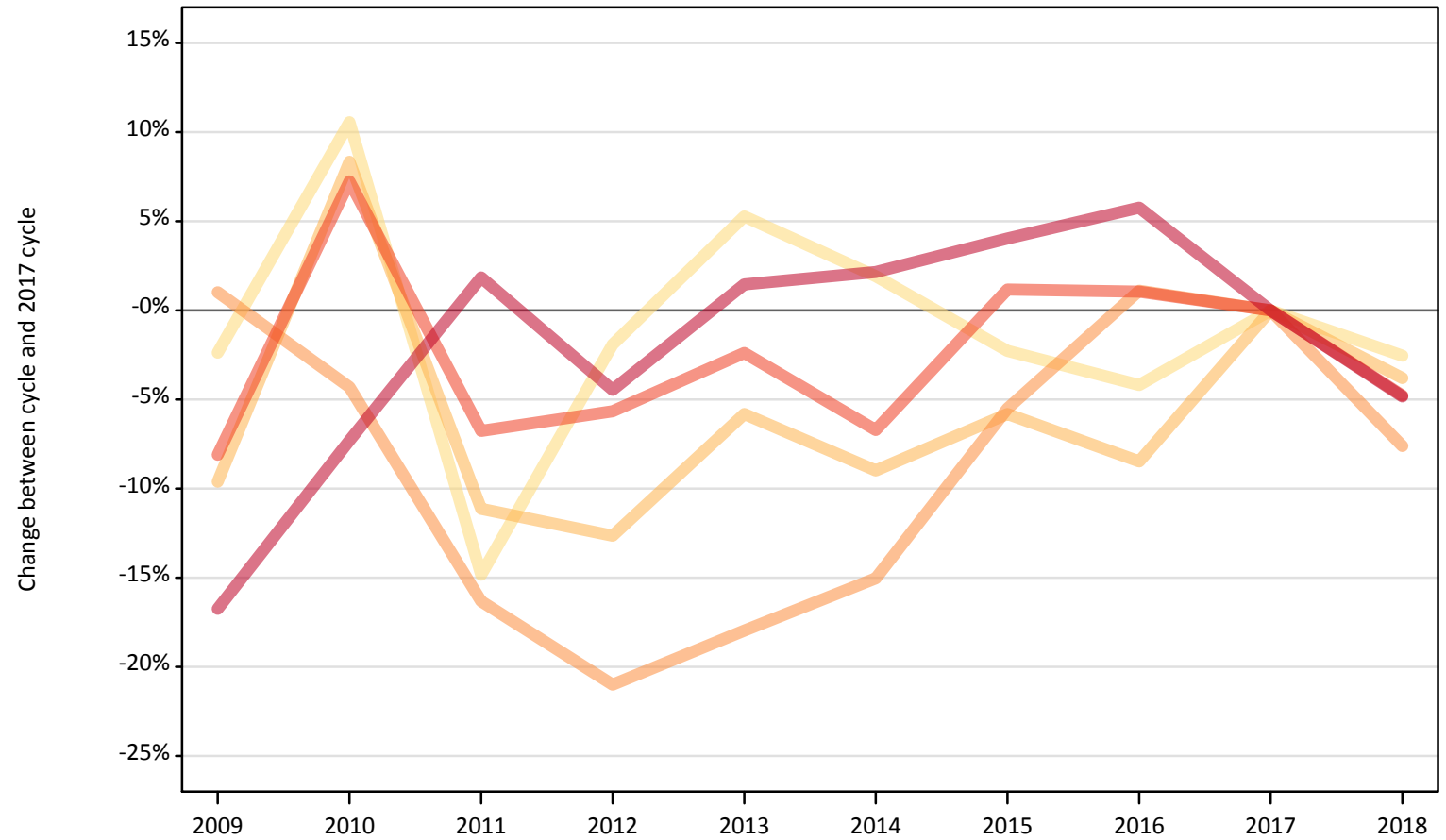
Domicile and number of applications made by applicant		2009	2010	2011	2012	2013	2014	2015	2016	2017	2018
England	1 application	40%	38%	14%	3%	10%	11%	9%	8%	0%	-1%
	2 applications	35%	35%	16%	0%	5%	6%	5%	7%	0%	-1%
	3 applications	39%	23%	6%	-6%	0%	3%	3%	2%	0%	2%
	4 applications	10%	21%	11%	-1%	4%	6%	6%	3%	0%	-0%
	5 applications	-14%	0%	8%	-3%	-1%	3%	5%	5%	0%	-5%
	All	-2%	8%	9%	-2%	1%	4%	5%	5%	0%	-4%

Note: The percentage change is not recorded in the above table for groups with fewer than 10 applicants in that cycle or in the 2017 cycle.

I.4.10 Applicants by domicile and number of applications made : Northern Ireland

Difference between cycle and 2017 cycle

- 1 application
- 2 applications
- 3 applications
- 4 applications
- 5 applications



Note: The percentage change is not plotted in the above chart for groups with fewer than 500 applications in any one cycle.

I.4.11 Applicants by domicile and number of applications made : Northern Ireland

Domicile and number of applications made by applicant		2009	2010	2011	2012	2013	2014	2015	2016	2017	2018
Northern Ireland	1 application	1,070	1,220	940	1,080	1,160	1,120	1,070	1,050	1,100	1,070
	2 applications	720	860	700	690	750	720	750	720	790	760
	3 applications	1,100	1,040	910	860	900	930	1,030	1,100	1,090	1,010
	4 applications	1,580	1,840	1,600	1,620	1,670	1,600	1,740	1,730	1,720	1,630
	5 applications	12,990	14,460	15,880	14,900	15,820	15,930	16,220	16,490	15,600	14,840
	All	17,450	19,410	20,030	19,150	20,290	20,300	20,810	21,110	20,290	19,310

I.4.12 Applicants by domicile and number of applications made : Northern Ireland

Difference between cycle and 2017 cycle

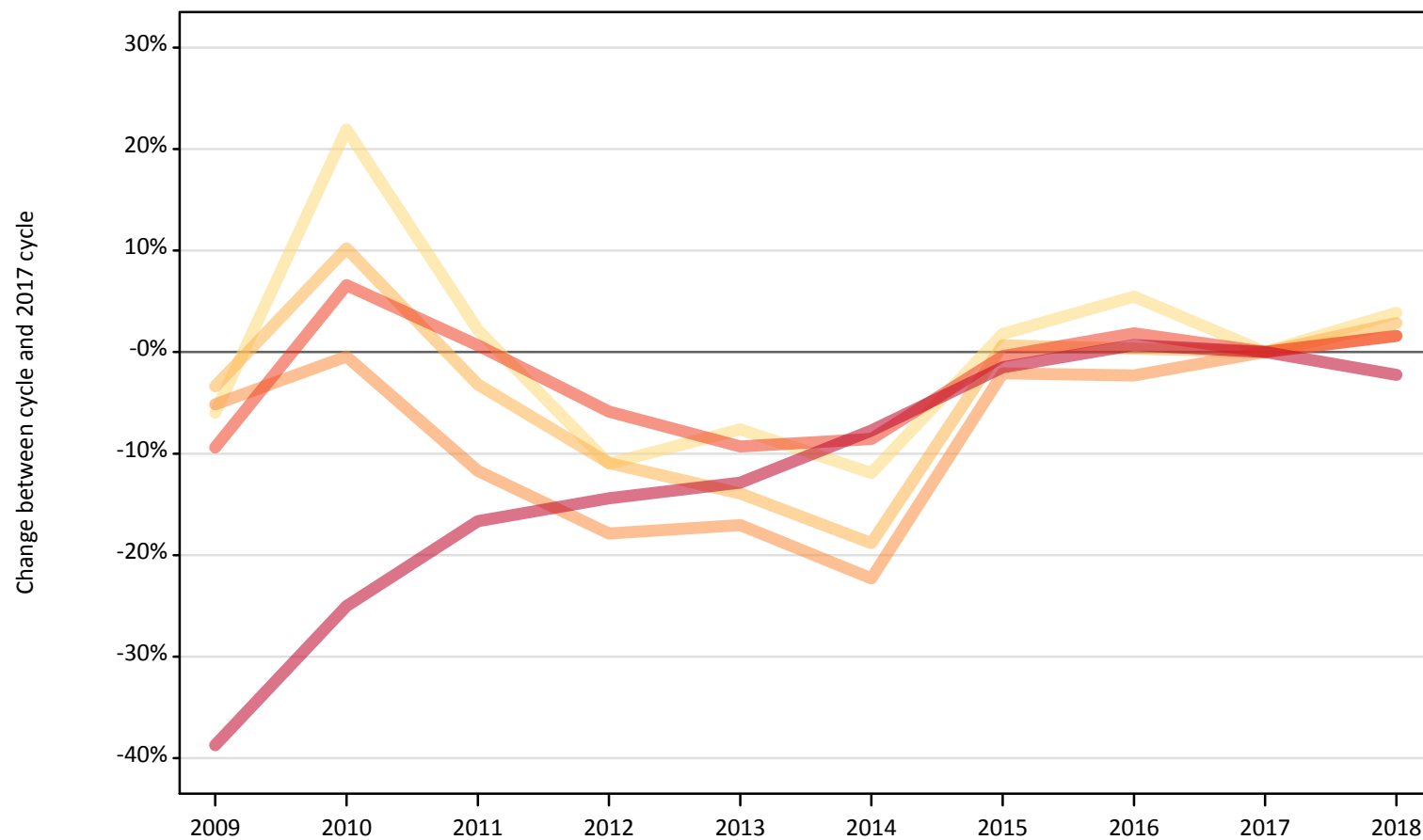
Domicile and number of applications made by applicant		2009	2010	2011	2012	2013	2014	2015	2016	2017	2018
Northern Ireland	1 application	-2%	11%	-15%	-2%	5%	2%	-2%	-4%	0%	-3%
	2 applications	-10%	8%	-11%	-13%	-6%	-9%	-6%	-8%	0%	-4%
	3 applications	1%	-4%	-16%	-21%	-18%	-15%	-5%	1%	0%	-8%
	4 applications	-8%	7%	-7%	-6%	-2%	-7%	1%	1%	0%	-5%
	5 applications	-17%	-7%	2%	-4%	1%	2%	4%	6%	0%	-5%
	All	-14%	-4%	-1%	-6%	0%	0%	3%	4%	0%	-5%

Note: The percentage change is not recorded in the above table for groups with fewer than 10 applicants in that cycle or in the 2017 cycle.

I.4.13 Applicants by domicile and number of applications made : Scotland

Difference between cycle and 2017 cycle

- 1 application
- 2 applications
- 3 applications
- 4 applications
- 5 applications



Note: The percentage change is not plotted in the above chart for groups with fewer than 500 applications in any one cycle.

I.4.14 Applicants by domicile and number of applications made : Scotland

Domicile and number of applications made by applicant		2009	2010	2011	2012	2013	2014	2015	2016	2017	2018
Scotland	1 application	5,380	6,970	5,840	5,090	5,280	5,040	5,820	6,030	5,720	5,940
	2 applications	3,100	3,540	3,110	2,860	2,760	2,610	3,230	3,220	3,210	3,300
	3 applications	3,920	4,120	3,650	3,390	3,430	3,210	4,050	4,040	4,130	4,200
	4 applications	4,650	5,470	5,160	4,830	4,650	4,690	5,110	5,220	5,130	5,210
	5 applications	18,840	23,050	25,630	26,320	26,800	28,370	30,290	30,960	30,750	30,050
	All	35,890	43,150	43,390	42,490	42,930	43,910	48,490	49,470	48,940	48,710

I.4.15 Applicants by domicile and number of applications made : Scotland

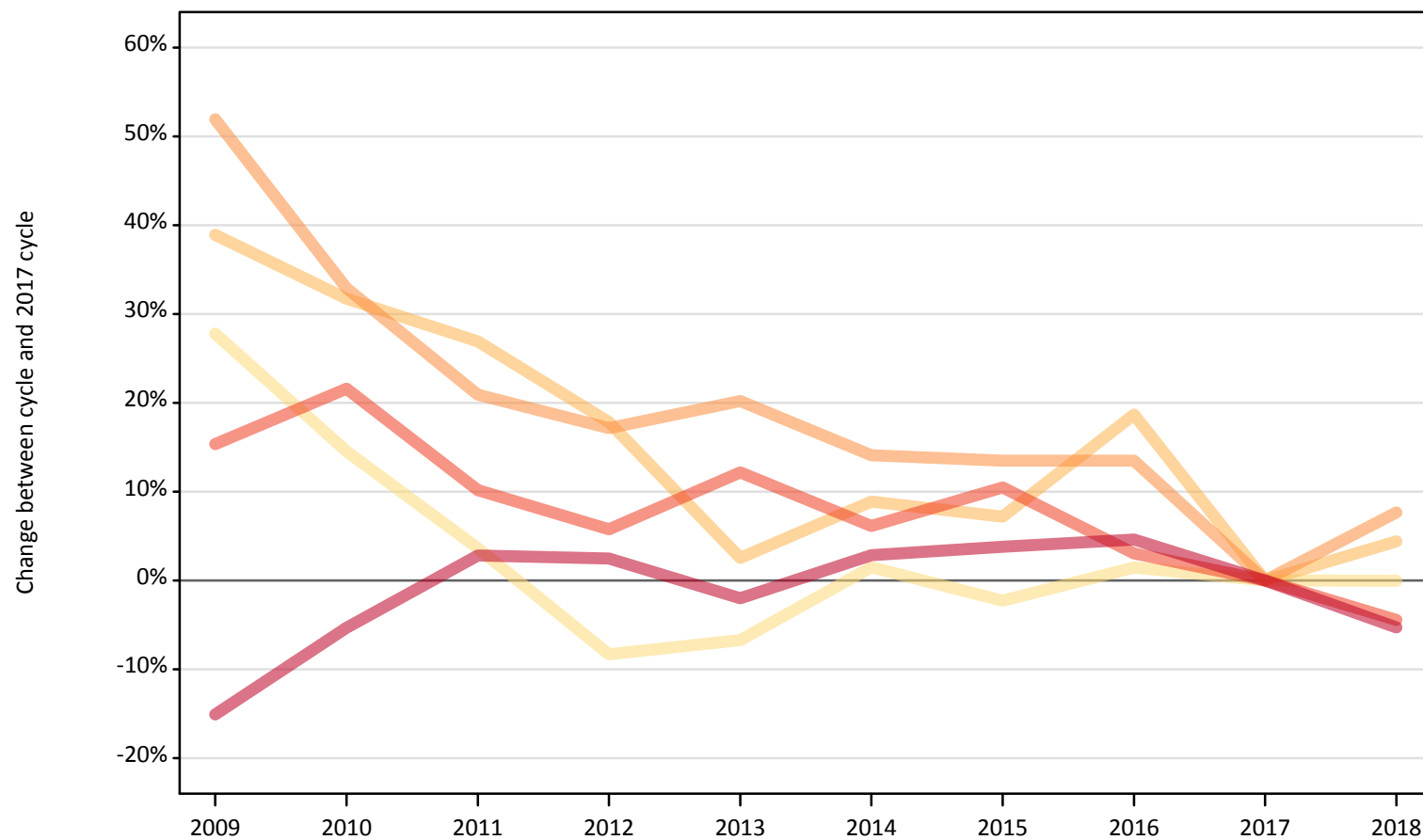
Difference between cycle and 2017 cycle

Domicile and number of applications made by applicant		2009	2010	2011	2012	2013	2014	2015	2016	2017	2018
Scotland	1 application	-6%	22%	2%	-11%	-8%	-12%	2%	5%	0%	4%
	2 applications	-3%	10%	-3%	-11%	-14%	-19%	1%	0%	0%	3%
	3 applications	-5%	-0%	-12%	-18%	-17%	-22%	-2%	-2%	0%	2%
	4 applications	-9%	7%	1%	-6%	-9%	-9%	-0%	2%	0%	2%
	5 applications	-39%	-25%	-17%	-14%	-13%	-8%	-1%	1%	0%	-2%
	All	-27%	-12%	-11%	-13%	-12%	-10%	-1%	1%	0%	-0%

Note: The percentage change is not recorded in the above table for groups with fewer than 10 applicants in that cycle or in the 2017 cycle.

I.4.16 Applicants by domicile and number of applications made : Wales
Difference between cycle and 2017 cycle

- 1 application
- 2 applications
- 3 applications
- 4 applications
- 5 applications



Note: The percentage change is not plotted in the above chart for groups with fewer than 500 applications in any one cycle.

I.4.17 Applicants by domicile and number of applications made : Wales

Domicile and number of applications made by applicant		2009	2010	2011	2012	2013	2014	2015	2016	2017	2018
Wales	1 application	3,960	3,550	3,210	2,840	2,890	3,150	3,030	3,150	3,100	3,100
	2 applications	1,640	1,560	1,500	1,390	1,210	1,290	1,270	1,400	1,180	1,230
	3 applications	2,290	2,010	1,830	1,770	1,820	1,720	1,710	1,710	1,510	1,630
	4 applications	2,760	2,900	2,630	2,530	2,680	2,540	2,640	2,460	2,390	2,280
	5 applications	12,190	13,590	14,750	14,710	14,060	14,760	14,900	15,010	14,350	13,590
	All	22,840	23,610	23,920	23,240	22,660	23,450	23,550	23,740	22,530	21,830

I.4.18 Applicants by domicile and number of applications made : Wales

Difference between cycle and 2017 cycle

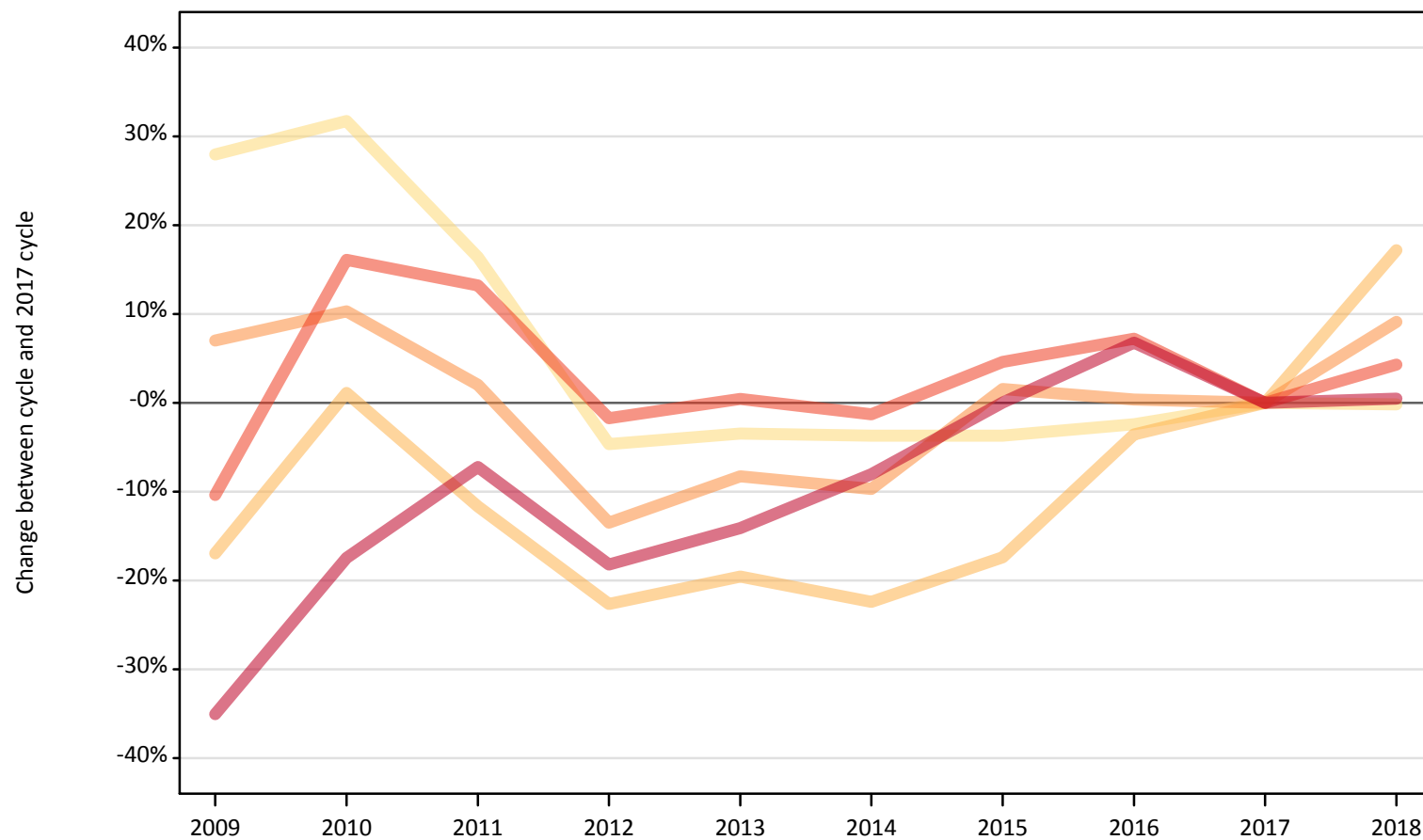
Domicile and number of applications made by applicant		2009	2010	2011	2012	2013	2014	2015	2016	2017	2018
Wales	1 application	28%	15%	4%	-8%	-7%	2%	-2%	1%	0%	-0%
	2 applications	39%	32%	27%	18%	3%	9%	7%	19%	0%	4%
	3 applications	52%	33%	21%	17%	20%	14%	14%	14%	0%	8%
	4 applications	15%	22%	10%	6%	12%	6%	10%	3%	0%	-4%
	5 applications	-15%	-5%	3%	2%	-2%	3%	4%	5%	0%	-5%
	All	1%	5%	6%	3%	1%	4%	5%	5%	0%	-3%

Note: The percentage change is not recorded in the above table for groups with fewer than 10 applicants in that cycle or in the 2017 cycle.

I.4.19 Applicants by domicile and number of applications made : EU (excluding UK)

Difference between cycle and 2017 cycle

- 1 application
- 2 applications
- 3 applications
- 4 applications
- 5 applications



Note: The percentage change is not plotted in the above chart for groups with fewer than 500 applications in any one cycle.

I.4.20 Applicants by domicile and number of applications made : EU (excluding UK)

Domicile and number of applications made by applicant		2009	2010	2011	2012	2013	2014	2015	2016	2017	2018
EU (excluding UK)	1 application	5,640	5,800	5,130	4,200	4,250	4,240	4,240	4,300	4,410	4,400
	2 applications	1,750	2,140	1,870	1,630	1,700	1,640	1,750	2,040	2,110	2,480
	3 applications	2,240	2,310	2,140	1,810	1,920	1,890	2,130	2,110	2,100	2,290
	4 applications	3,160	4,090	3,990	3,460	3,540	3,480	3,680	3,770	3,520	3,670
	5 applications	24,120	30,640	34,440	30,370	31,880	34,130	37,130	39,630	37,120	37,290
	All	36,900	44,980	47,560	41,480	43,290	45,380	48,930	51,850	49,250	50,130

I.4.21 Applicants by domicile and number of applications made : EU (excluding UK)

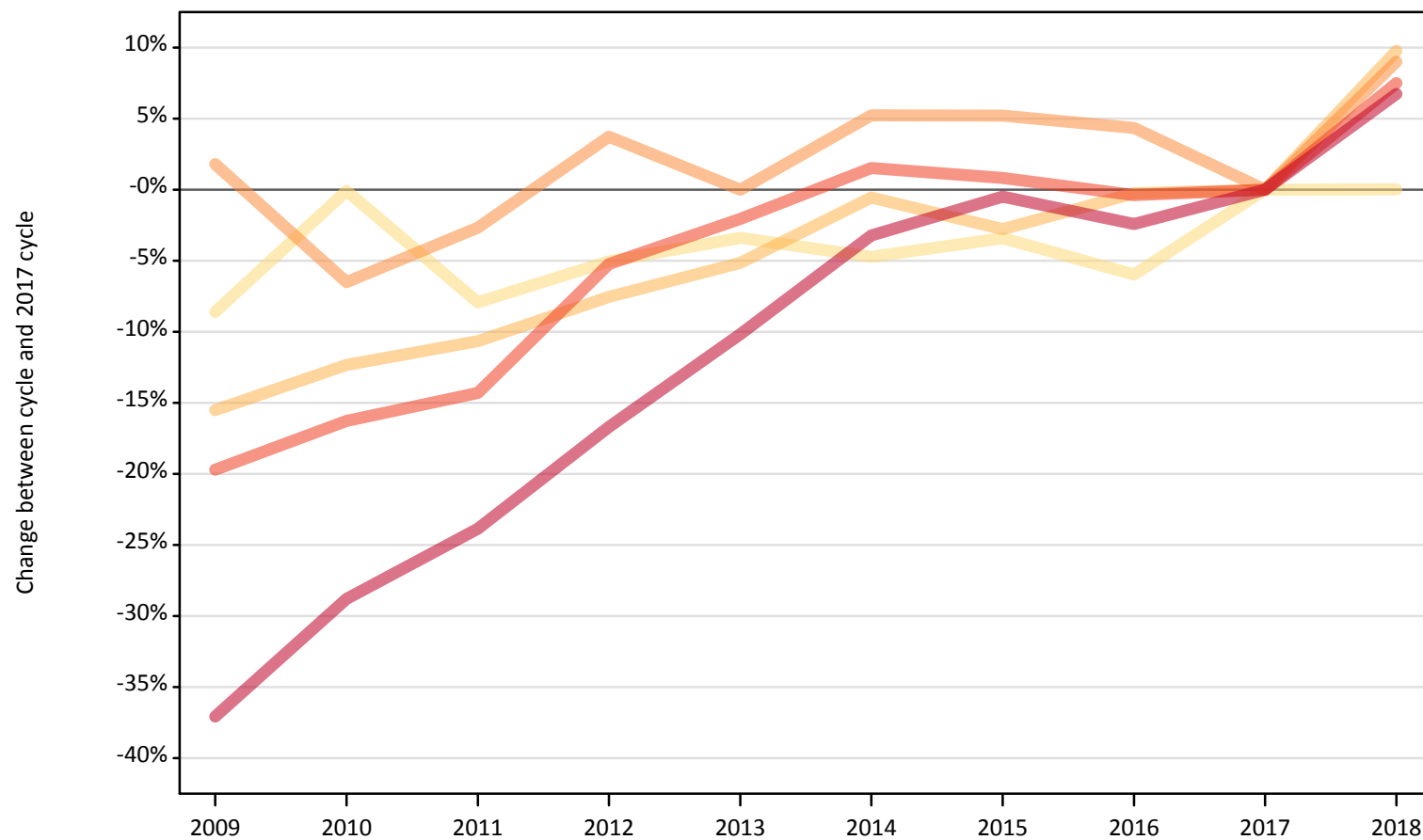
Difference between cycle and 2017 cycle

Domicile and number of applications made by applicant		2009	2010	2011	2012	2013	2014	2015	2016	2017	2018
EU (excluding UK)	1 application	28%	32%	16%	-5%	-3%	-4%	-4%	-2%	0%	-0%
	2 applications	-17%	1%	-12%	-23%	-20%	-22%	-17%	-4%	0%	17%
	3 applications	7%	10%	2%	-13%	-8%	-10%	2%	0%	0%	9%
	4 applications	-10%	16%	13%	-2%	0%	-1%	5%	7%	0%	4%
	5 applications	-35%	-17%	-7%	-18%	-14%	-8%	0%	7%	0%	0%
	All	-25%	-9%	-3%	-16%	-12%	-8%	-1%	5%	0%	2%

Note: The percentage change is not recorded in the above table for groups with fewer than 10 applicants in that cycle or in the 2017 cycle.

I.4.22 Applicants by domicile and number of applications made : Not EU
Difference between cycle and 2017 cycle

- 1 application
- 2 applications
- 3 applications
- 4 applications
- 5 applications



Note: The percentage change is not plotted in the above chart for groups with fewer than 500 applications in any one cycle.

I.4.23 Applicants by domicile and number of applications made : Not EU

Domicile and number of applications made by applicant		2009	2010	2011	2012	2013	2014	2015	2016	2017	2018
Not EU	1 application	5,600	6,130	5,650	5,820	5,920	5,840	5,920	5,770	6,130	6,130
	2 applications	1,970	2,050	2,090	2,160	2,220	2,320	2,270	2,330	2,340	2,560
	3 applications	3,620	3,320	3,460	3,690	3,550	3,740	3,740	3,710	3,550	3,870
	4 applications	4,140	4,320	4,420	4,890	5,060	5,240	5,200	5,140	5,160	5,550
	5 applications	33,760	38,200	40,860	44,700	48,190	51,920	53,390	52,360	53,650	57,260
	All	49,100	54,020	56,470	61,260	64,940	69,060	70,530	69,300	70,830	75,380

I.4.24 Applicants by domicile and number of applications made : Not EU

Difference between cycle and 2017 cycle

Domicile and number of applications made by applicant		2009	2010	2011	2012	2013	2014	2015	2016	2017	2018
Not EU	1 application	-9%	-0%	-8%	-5%	-3%	-5%	-3%	-6%	0%	0%
	2 applications	-16%	-12%	-11%	-8%	-5%	-1%	-3%	-0%	0%	10%
	3 applications	2%	-7%	-3%	4%	0%	5%	5%	4%	0%	9%
	4 applications	-20%	-16%	-14%	-5%	-2%	2%	1%	-0%	0%	7%
	5 applications	-37%	-29%	-24%	-17%	-10%	-3%	-0%	-2%	0%	7%
	All	-31%	-24%	-20%	-14%	-8%	-3%	-0%	-2%	0%	6%

Note: The percentage change is not recorded in the above table for groups with fewer than 10 applicants in that cycle or in the 2017 cycle.

I.4.25 Technical notes and definitions

Applicants have been able to submit applications for all 2018 courses since early September.

Applicants who submit their applications to UCAS by the January deadline are considered 'on time' applicants for the large majority of courses offered through UCAS. Some art and design courses have a later deadline of 24 March. By definition all main scheme applications have been received by the 30 June deadline.

Counts of the number of applicants reported have been rounded to the nearest 10 applicants, this may result in instances where totals do not equal the sum of the components. Proportional changes have been rounded to the nearest whole percentage point.

In 2009, the Canary Islands classification changed from Not EU to EU (excluding UK). In order to present an accurate time series, the Canary Islands have been consistently classified as EU (excluding UK). This will result in differences with data published prior to 2010.

Age

This statistical release uses country-specific age definitions which align with the cut off points for school/college cohorts within the different administrations of the UK. For England and Wales ages are defined on the 31 August, for Northern Ireland on the 1 July and for Scotland on the 28 February the following year. Defining ages in this way matches the assignment of children to school cohorts. For applicants outside of the UK the cohort cut off for England and Wales has been used.

Applicant

A person who has made an application in the UCAS system during the cycle reported (including applications for deferred entry). Records of prior acceptance (RPAs) are excluded.

Application

An application to a course at a provider made by an applicant in the UCAS main scheme. Applicants may make up to five main scheme applications.

Country of provider

An applicant may be counted once for each provider country they have applied to in the main scheme. If an applicant has applied to providers in multiple countries then the applicant is counted once within each country of provider applied to.

Domicile

Declared area of permanent residence. The Channel Islands and the Isle of Man have been assigned as 'Not EU'.

Ethnic group

High level grouping of ethnic origin as declared by the applicant: 'Asian', 'Black', 'Mixed', 'White', 'Other', 'Unknown'.

First time applicant

An applicant that did not apply to the UCAS scheme in the previous cycle.

Main scheme

The main UCAS application scheme through which up to five providers/courses can be applied to. This opens in September and closes to new applications on 30 June the following year.

Reapplicant

An applicant that applied to the UCAS scheme in the previous cycle.

Sex

As declared by the applicant.

SIMD 2016

Scottish Index of Multiple Deprivation identifies small area concentrations of multiple deprivation across all of Scotland, providing a relative measure of deprivation among small areas (data zones). In this report, the SIMD 2016 has been used to group areas in each year in the times series.

POLAR3

Developed by HEFCE and classifies small areas across the UK into five groups, according to their level of young participation in HE. Each of these groups represents around 20 per cent of young people, and is ranked from quintile 1 (areas with the lowest young participation rates, considered as the most disadvantaged) to quintile 5 (highest young participation rates, considered most advantaged).

POLAR4

Developed by HEFCE and classifies small areas across the UK into five groups, according to their level of young participation in HE. Each of these groups represents around 20 per cent of young people, and is ranked from quintile 1 (areas with the lowest young participation rates, considered as the most disadvantaged) to quintile 5 (highest young participation rates, considered most advantaged). POLAR4 is the most recent version of the POLAR classification, and is available for the first time in UCAS? reporting since its launch in 2017.

Tariff Group of provider

Providers are grouped as higher, medium or lower tariff based on their average levels of attainment of their accepted applicants (summarised through UCAS Tariff points) in recent cycles. Each group of providers accounted for around a third of all UK 18 year old acceptances in recent cycles.

Subject group

The JACS3 classification used to classify courses into subject groups.