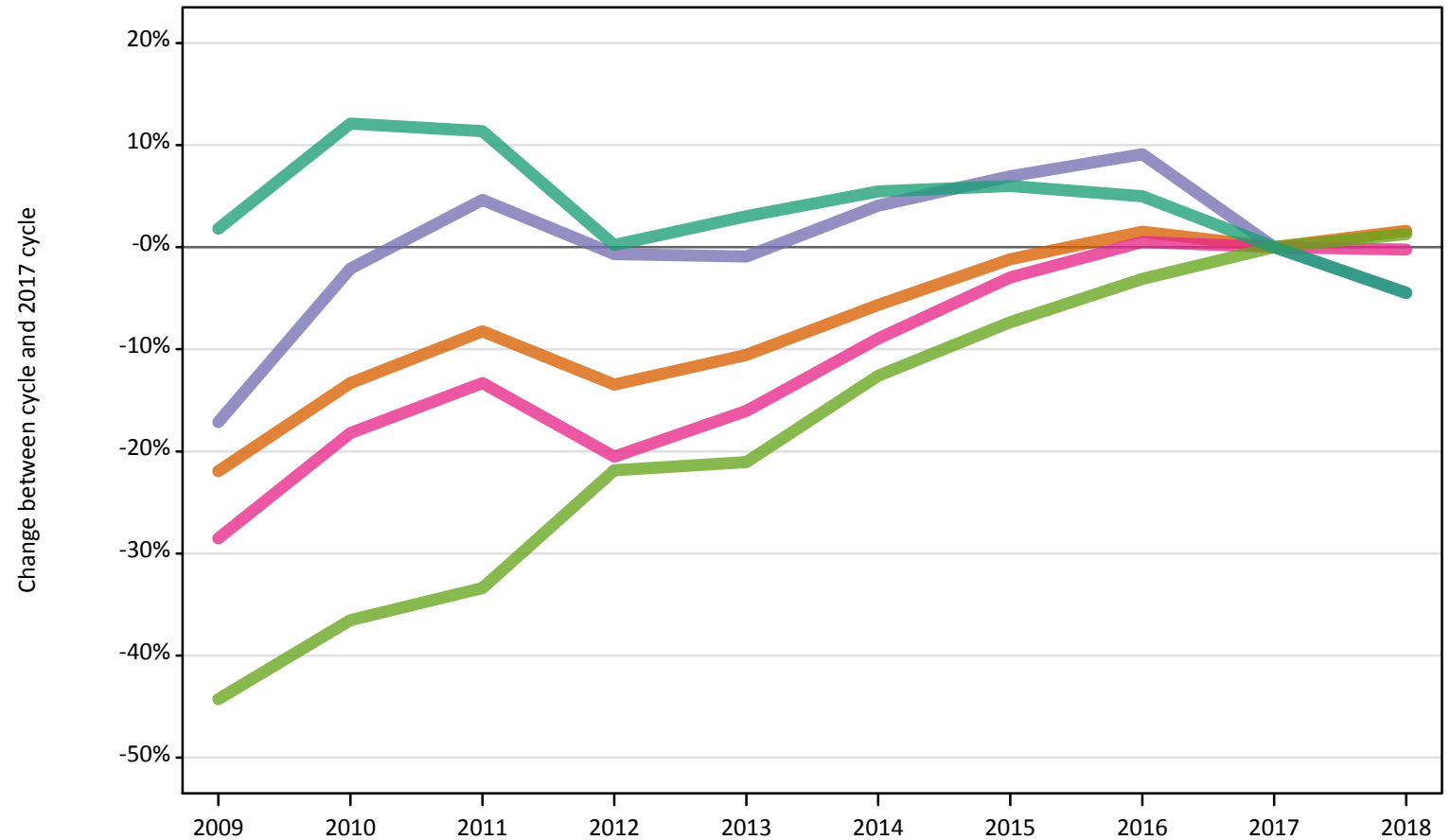


June Deadline Analysis: Ethnic group

Applicants by ethnic group and age at the 30 June deadline

I.10.1 Applicants by ethnic group: UK Difference between cycle and 2017 cycle

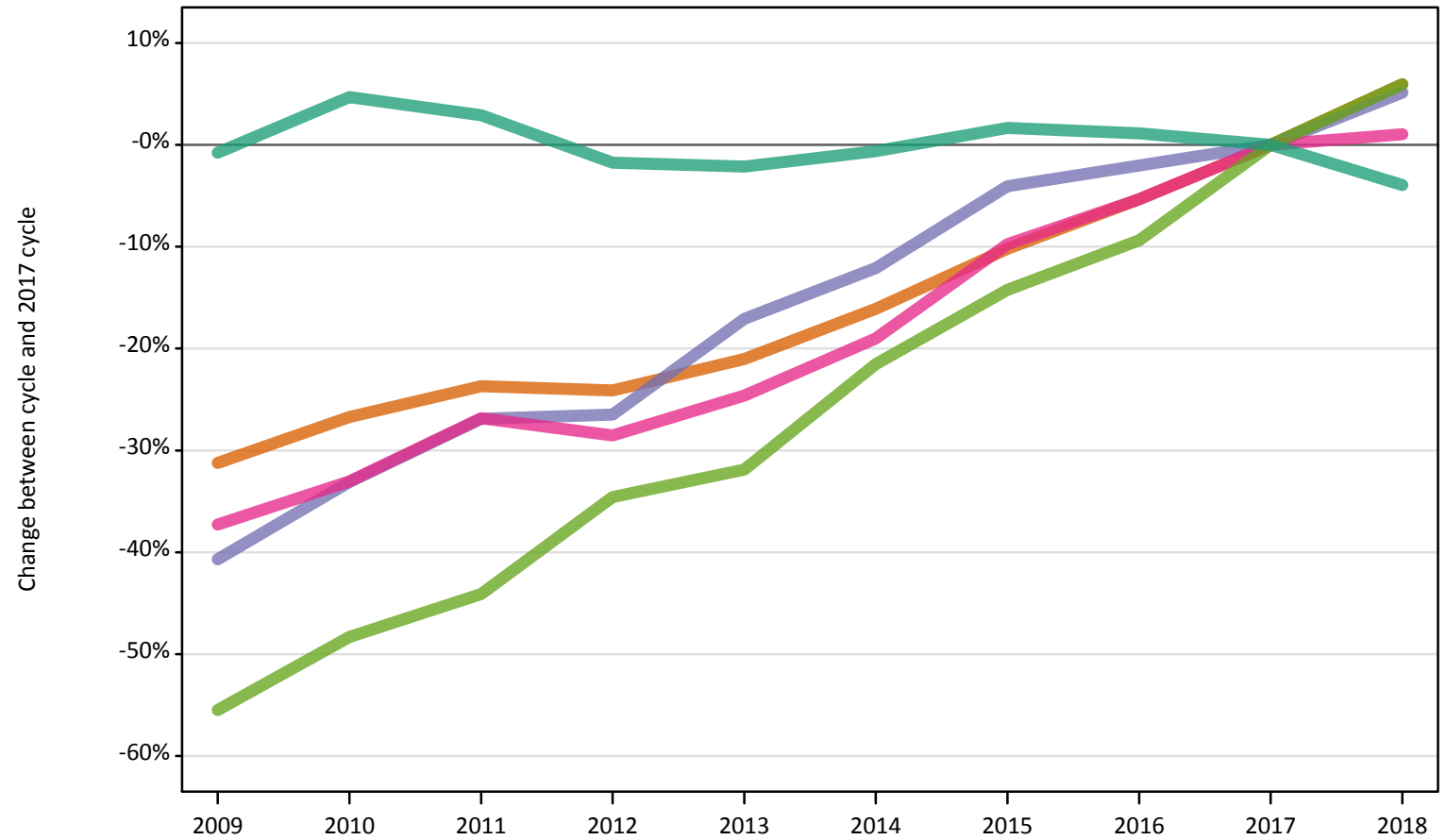
- Asian
- Black
- Mixed
- White
- Other



Note: The percentage change is not plotted in the above chart for groups with fewer than 500 applicants in any one cycle.

I.10.2 18 year old applicants by ethnic group: UK
Difference between cycle and 2017 cycle

- Asian
- Black
- Mixed
- White
- Other



Note: The percentage change is not plotted in the above chart for groups with fewer than 500 applicants in any one cycle.

I.10.3 Applicants by age and ethnic group: UK

Age group and ethnic group of applicant		2009	2010	2011	2012	2013	2014	2015	2016	2017	2018
Under 18	Asian	270	240	200	200	180	150	200	160	180	200
	Black	130	130	130	90	100	110	100	110	110	130
	Mixed	100	130	100	90	80	100	90	90	100	110
	White	2,100	1,980	1,780	1,390	1,250	1,290	1,330	1,420	1,280	1,200
	Other	40	50	40	50	60	50	70	60	60	50
18	Asian	22,730	24,220	25,230	25,090	26,100	27,730	29,680	31,290	33,060	35,020
	Black	8,300	9,360	10,230	10,290	11,600	12,300	13,430	13,710	13,990	14,710
	Mixed	7,610	8,130	8,880	8,670	9,150	9,830	10,950	11,490	12,130	12,260
	White	211,530	223,110	219,370	209,440	208,620	211,800	216,690	215,580	213,150	204,740
	Other	1,840	2,130	2,310	2,700	2,810	3,240	3,540	3,740	4,130	4,370
19	Asian	11,530	12,600	13,960	12,800	13,630	14,100	14,750	14,880	14,100	13,730
	Black	5,720	6,210	6,830	6,470	6,820	7,390	7,820	7,960	7,410	6,990
	Mixed	3,370	3,990	4,120	3,540	4,050	4,420	4,610	4,870	4,690	4,600
	White	68,410	77,560	80,540	64,520	72,620	73,070	72,510	72,060	67,000	62,820
	Other	1,120	1,250	1,280	1,590	1,680	1,860	2,010	2,120	2,120	2,110
20 and over	Asian	13,290	16,030	16,810	14,940	14,880	15,810	15,900	15,850	13,920	13,290
	Black	21,160	26,020	27,420	25,490	23,710	24,550	24,220	24,720	21,100	18,910
	Mixed	5,490	6,730	7,020	6,140	6,210	6,780	6,860	6,870	6,270	6,180
	White	113,450	132,820	130,980	113,970	117,740	123,520	121,230	118,760	107,070	102,280
	Other	2,240	2,540	2,640	3,010	2,880	3,070	3,090	3,200	3,100	2,990
All ages	Asian	47,810	53,100	56,200	53,020	54,790	57,790	60,530	62,190	61,260	62,240
	Black	35,310	41,720	44,600	42,330	42,230	44,350	45,570	46,510	42,620	40,730
	Mixed	16,580	18,970	20,110	18,440	19,480	21,120	22,510	23,310	23,200	23,140
	White	395,490	435,470	432,670	389,320	400,220	409,670	411,760	407,810	388,490	371,030
	Other	5,240	5,970	6,260	7,350	7,420	8,220	8,710	9,110	9,400	9,520

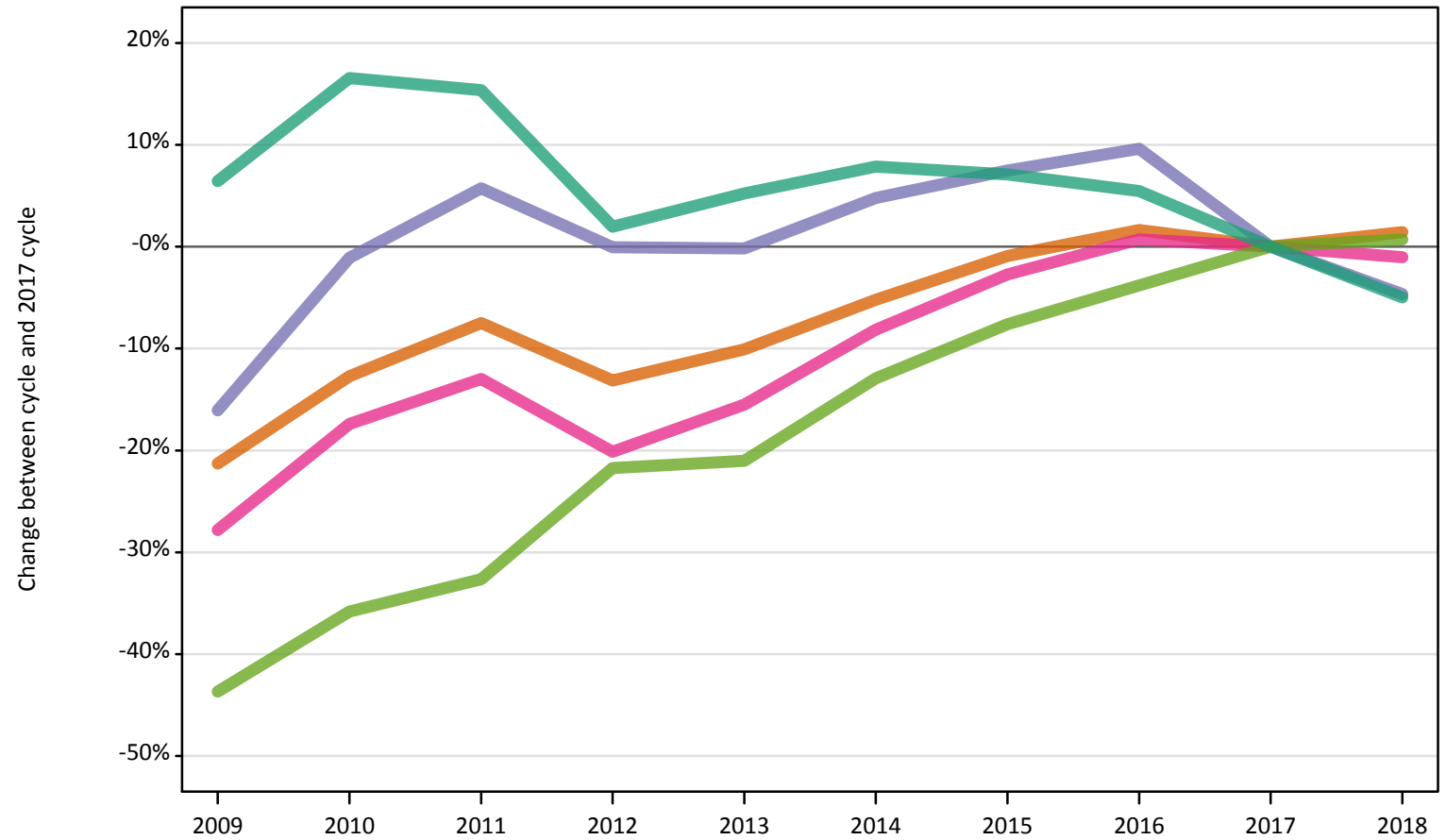
I.10.4 Applicants by age and ethnic group: UK
Difference between cycle and 2017 cycle

Age group and ethnic group of applicant		2009	2010	2011	2012	2013	2014	2015	2016	2017	2018
Under 18	Asian	46%	34%	11%	9%	1%	-17%	8%	-10%	0%	9%
	Black	20%	15%	13%	-21%	-10%	-2%	-10%	1%	0%	12%
	Mixed	6%	28%	-1%	-9%	-23%	-2%	-7%	-12%	0%	9%
	White	65%	55%	39%	9%	-2%	1%	4%	11%	0%	-6%
	Other	-38%	-19%	-43%	-24%	-11%	-17%	6%	-11%	0%	-17%
18	Asian	-31%	-27%	-24%	-24%	-21%	-16%	-10%	-5%	0%	6%
	Black	-41%	-33%	-27%	-26%	-17%	-12%	-4%	-2%	0%	5%
	Mixed	-37%	-33%	-27%	-29%	-25%	-19%	-10%	-5%	0%	1%
	White	-1%	5%	3%	-2%	-2%	-1%	2%	1%	0%	-4%
	Other	-55%	-48%	-44%	-35%	-32%	-22%	-14%	-9%	0%	6%
19	Asian	-18%	-11%	-1%	-9%	-3%	0%	5%	6%	0%	-3%
	Black	-23%	-16%	-8%	-13%	-8%	-0%	5%	7%	0%	-6%
	Mixed	-28%	-15%	-12%	-25%	-14%	-6%	-2%	4%	0%	-2%
	White	2%	16%	20%	-4%	8%	9%	8%	8%	0%	-6%
	Other	-47%	-41%	-40%	-25%	-21%	-12%	-5%	0%	0%	0%
20 and over	Asian	-5%	15%	21%	7%	7%	14%	14%	14%	0%	-5%
	Black	0%	23%	30%	21%	12%	16%	15%	17%	0%	-10%
	Mixed	-12%	7%	12%	-2%	-1%	8%	9%	10%	0%	-2%
	White	6%	24%	22%	6%	10%	15%	13%	11%	0%	-4%
	Other	-28%	-18%	-15%	-3%	-7%	-1%	-0%	3%	0%	-3%
All ages	Asian	-22%	-13%	-8%	-13%	-11%	-6%	-1%	2%	0%	2%
	Black	-17%	-2%	5%	-1%	-1%	4%	7%	9%	0%	-4%
	Mixed	-29%	-18%	-13%	-21%	-16%	-9%	-3%	1%	0%	-0%
	White	2%	12%	11%	0%	3%	5%	6%	5%	0%	-4%
	Other	-44%	-37%	-33%	-22%	-21%	-13%	-7%	-3%	0%	1%

Note: The percentage change is not recorded in the above table for groups with fewer than 10 applicants in that cycle or in the 2017 cycle.

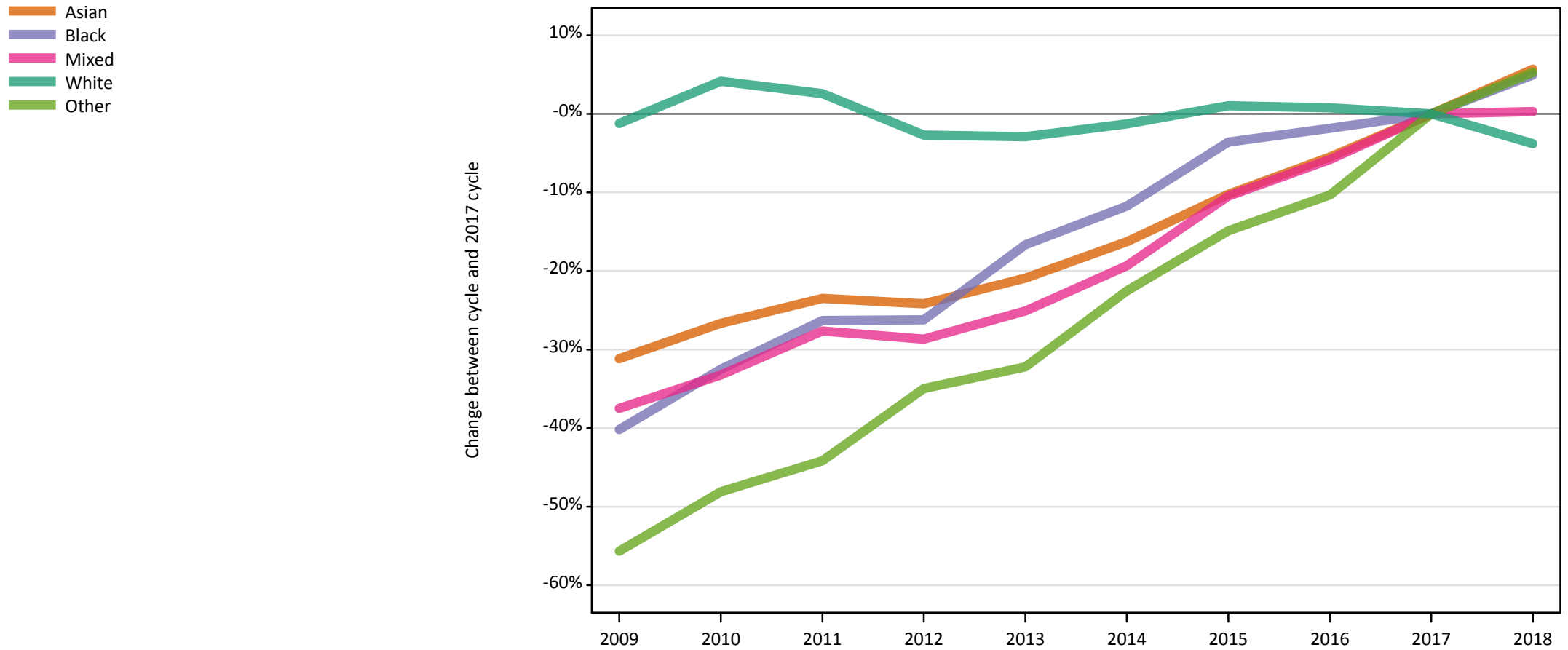
I.10.5 Applicants by ethnic group: England
Difference between cycle and 2017 cycle

- Asian
- Black
- Mixed
- White
- Other



Note: The percentage change is not plotted in the above chart for groups with fewer than 500 applicants in any one cycle.

I.10.6 18 year old applicants by ethnic group: England
Difference between cycle and 2017 cycle



Note: The percentage change is not plotted in the above chart for groups with fewer than 500 applicants in any one cycle.

I.10.7 Applicants by age and ethnic group: England

Age group and ethnic group of applicant		2009	2010	2011	2012	2013	2014	2015	2016	2017	2018
Under 18	Asian	200	180	140	150	140	110	160	110	130	130
	Black	130	110	110	80	90	100	90	90	90	110
	Mixed	80	100	80	60	60	70	70	70	80	90
	White	1,080	1,000	860	600	560	630	620	670	530	490
	Other	40	50	30	40	40	40	60	50	50	40
18	Asian	21,750	23,170	24,170	23,950	24,980	26,440	28,350	29,860	31,590	33,380
	Black	8,190	9,240	10,080	10,100	11,400	12,080	13,190	13,430	13,680	14,360
	Mixed	7,150	7,630	8,270	8,150	8,570	9,230	10,240	10,770	11,430	11,470
	White	171,820	181,180	178,450	169,280	168,890	171,770	175,780	175,280	173,960	167,350
	Other	1,760	2,060	2,220	2,580	2,690	3,070	3,380	3,560	3,970	4,180
19	Asian	11,110	12,110	13,470	12,250	13,100	13,580	14,180	14,320	13,500	13,150
	Black	5,660	6,130	6,710	6,350	6,700	7,260	7,690	7,820	7,270	6,830
	Mixed	3,190	3,790	3,900	3,320	3,830	4,210	4,360	4,580	4,430	4,320
	White	58,850	66,310	68,420	52,920	60,840	61,100	60,450	59,270	54,950	51,000
	Other	1,080	1,210	1,240	1,520	1,620	1,790	1,940	2,030	2,020	2,030
20 and over	Asian	12,460	15,020	15,720	13,870	13,780	14,680	14,610	14,490	12,610	11,980
	Black	20,610	25,260	26,640	24,640	22,930	23,730	23,310	23,820	20,150	17,980
	Mixed	5,150	6,290	6,520	5,690	5,760	6,300	6,310	6,310	5,620	5,470
	White	92,200	106,200	103,320	87,490	89,940	94,780	89,070	85,680	74,870	70,370
	Other	2,150	2,400	2,520	2,840	2,680	2,850	2,860	2,940	2,870	2,730
All ages	Asian	45,520	50,480	53,490	50,230	52,010	54,820	57,300	58,780	57,830	58,650
	Black	34,580	40,740	43,550	41,170	41,130	43,160	44,280	45,160	41,190	39,280
	Mixed	15,570	17,820	18,770	17,230	18,220	19,810	20,980	21,730	21,570	21,340
	White	323,950	354,690	351,040	310,280	320,220	328,270	325,920	320,890	304,300	289,200
	Other	5,020	5,720	6,000	6,970	7,040	7,760	8,230	8,570	8,910	8,970

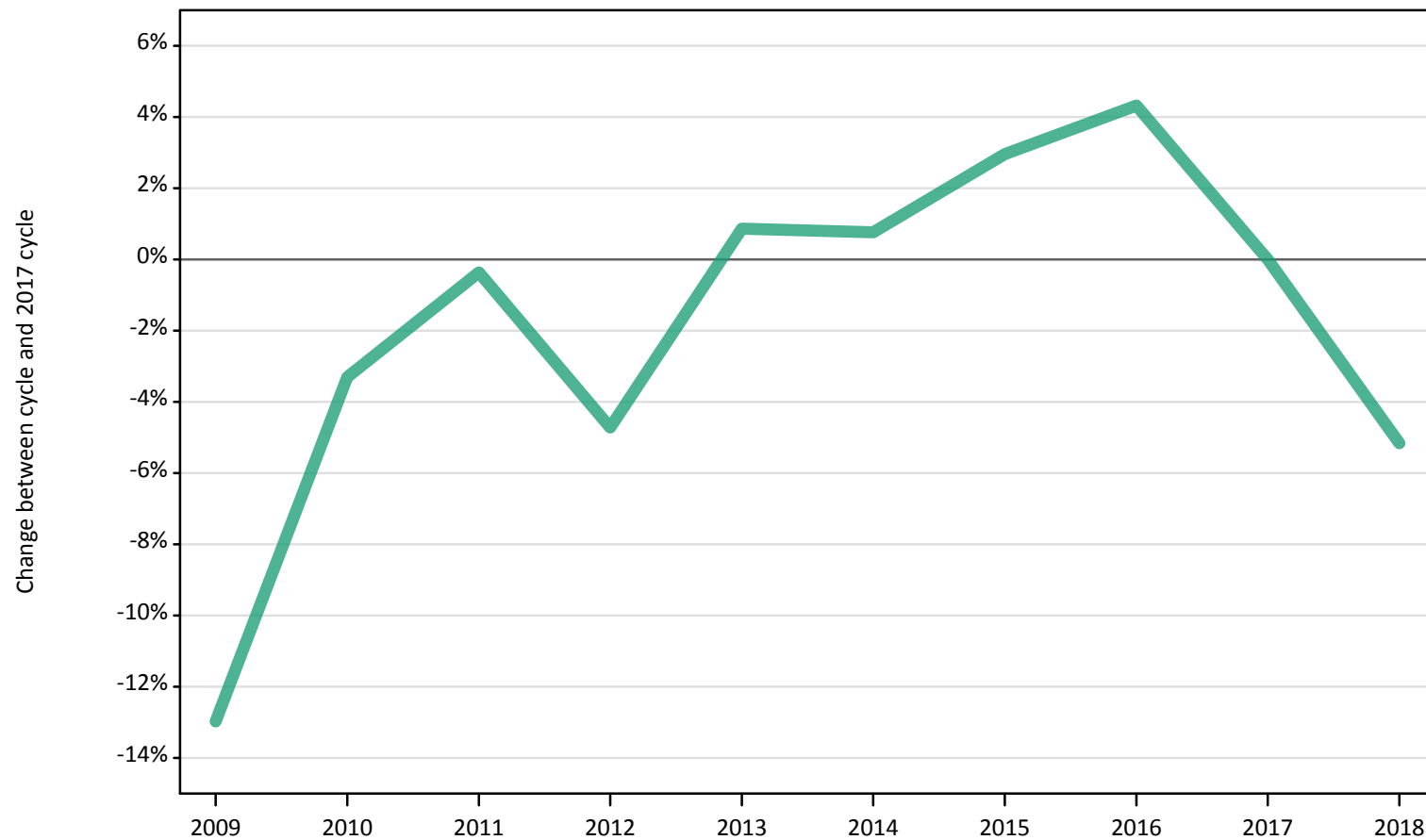
I.10.8 Applicants by age and ethnic group: England
Difference between cycle and 2017 cycle

Age group and ethnic group of applicant		2009	2010	2011	2012	2013	2014	2015	2016	2017	2018
Under 18	Asian	52%	32%	3%	14%	7%	-15%	20%	-15%	0%	0%
	Black	38%	24%	23%	-15%	-5%	12%	-3%	1%	0%	15%
	Mixed	-6%	15%	-10%	-30%	-30%	-13%	-12%	-19%	0%	5%
	White	105%	90%	63%	14%	6%	19%	18%	27%	0%	-7%
	Other	-25%	-4%	-31%	-19%	-10%	-8%	23%	-4%	0%	-8%
18	Asian	-31%	-27%	-23%	-24%	-21%	-16%	-10%	-5%	0%	6%
	Black	-40%	-32%	-26%	-26%	-17%	-12%	-4%	-2%	0%	5%
	Mixed	-37%	-33%	-28%	-29%	-25%	-19%	-10%	-6%	0%	0%
	White	-1%	4%	3%	-3%	-3%	-1%	1%	1%	0%	-4%
	Other	-56%	-48%	-44%	-35%	-32%	-23%	-15%	-10%	0%	5%
19	Asian	-18%	-10%	-0%	-9%	-3%	1%	5%	6%	0%	-3%
	Black	-22%	-16%	-8%	-13%	-8%	-0%	6%	8%	0%	-6%
	Mixed	-28%	-14%	-12%	-25%	-13%	-5%	-1%	3%	0%	-2%
	White	7%	21%	25%	-4%	11%	11%	10%	8%	0%	-7%
	Other	-47%	-40%	-39%	-25%	-20%	-11%	-4%	1%	0%	0%
20 and over	Asian	-1%	19%	25%	10%	9%	16%	16%	15%	0%	-5%
	Black	2%	25%	32%	22%	14%	18%	16%	18%	0%	-11%
	Mixed	-8%	12%	16%	1%	3%	12%	12%	12%	0%	-3%
	White	23%	42%	38%	17%	20%	27%	19%	14%	0%	-6%
	Other	-25%	-16%	-12%	-1%	-7%	-1%	-0%	2%	0%	-5%
All ages	Asian	-21%	-13%	-8%	-13%	-10%	-5%	-1%	2%	0%	1%
	Black	-16%	-1%	6%	-0%	-0%	5%	7%	10%	0%	-5%
	Mixed	-28%	-17%	-13%	-20%	-16%	-8%	-3%	1%	0%	-1%
	White	6%	17%	15%	2%	5%	8%	7%	5%	0%	-5%
	Other	-44%	-36%	-33%	-22%	-21%	-13%	-8%	-4%	0%	1%

Note: The percentage change is not recorded in the above table for groups with fewer than 10 applicants in that cycle or in the 2017 cycle.

I.10.9 Applicants by ethnic group: Northern Ireland
Difference between cycle and 2017 cycle

- Asian
- Black
- Mixed
- White
- Other



Note: The percentage change is not plotted in the above chart for groups with fewer than 500 applicants in any one cycle.

I.10.10 18 year old applicants by ethnic group: Northern Ireland
Difference between cycle and 2017 cycle

- Asian
- Black
- Mixed
- White
- Other



Note: The percentage change is not plotted in the above chart for groups with fewer than 500 applicants in any one cycle.

I.10.11 Applicants by age and ethnic group: Northern Ireland

Age group and ethnic group of applicant		2009	2010	2011	2012	2013	2014	2015	2016	2017	2018
Under 18	Asian	10	0	0	0	0	0	0	0	0	0
	Black	0	0	0	0	0	0	0	0	0	0
	Mixed	0	0	0	0	0	0	0	0	0	0
	White	50	50	40	50	30	20	30	40	20	20
	Other	0	0	0	0	0	0	0	0	0	0
18	Asian	80	90	90	90	110	110	130	140	140	160
	Black	10	10	10	10	20	20	20	20	30	20
	Mixed	70	70	90	60	80	80	100	100	100	130
	White	11,390	11,870	11,740	11,510	11,480	11,270	11,700	11,500	11,210	10,700
	Other	0	10	10	10	10	10	10	10	10	20
19	Asian	30	30	40	50	60	40	50	70	60	50
	Black	0	0	10	0	0	10	10	20	10	20
	Mixed	20	30	20	20	20	20	20	30	40	30
	White	2,040	2,550	3,030	2,670	2,950	3,040	3,080	3,480	3,250	3,050
	Other	0	10	10	0	0	10	10	10	10	10
20 and over	Asian	30	50	50	60	50	50	70	70	60	70
	Black	20	40	30	40	40	50	40	50	50	50
	Mixed	30	30	50	30	50	40	50	40	50	60
	White	3,610	4,520	4,760	4,490	5,350	5,470	5,420	5,480	5,170	4,860
	Other	10	10	10	10	20	10	10	20	10	10
All ages	Asian	150	170	190	200	210	210	250	280	260	280
	Black	30	50	60	50	70	80	70	90	90	90
	Mixed	120	120	160	120	140	150	180	170	190	220
	White	17,100	19,000	19,570	18,720	19,820	19,790	20,230	20,490	19,650	18,630
	Other	20	30	20	30	30	30	30	30	30	40

I.10.12 Applicants by age and ethnic group: Northern Ireland

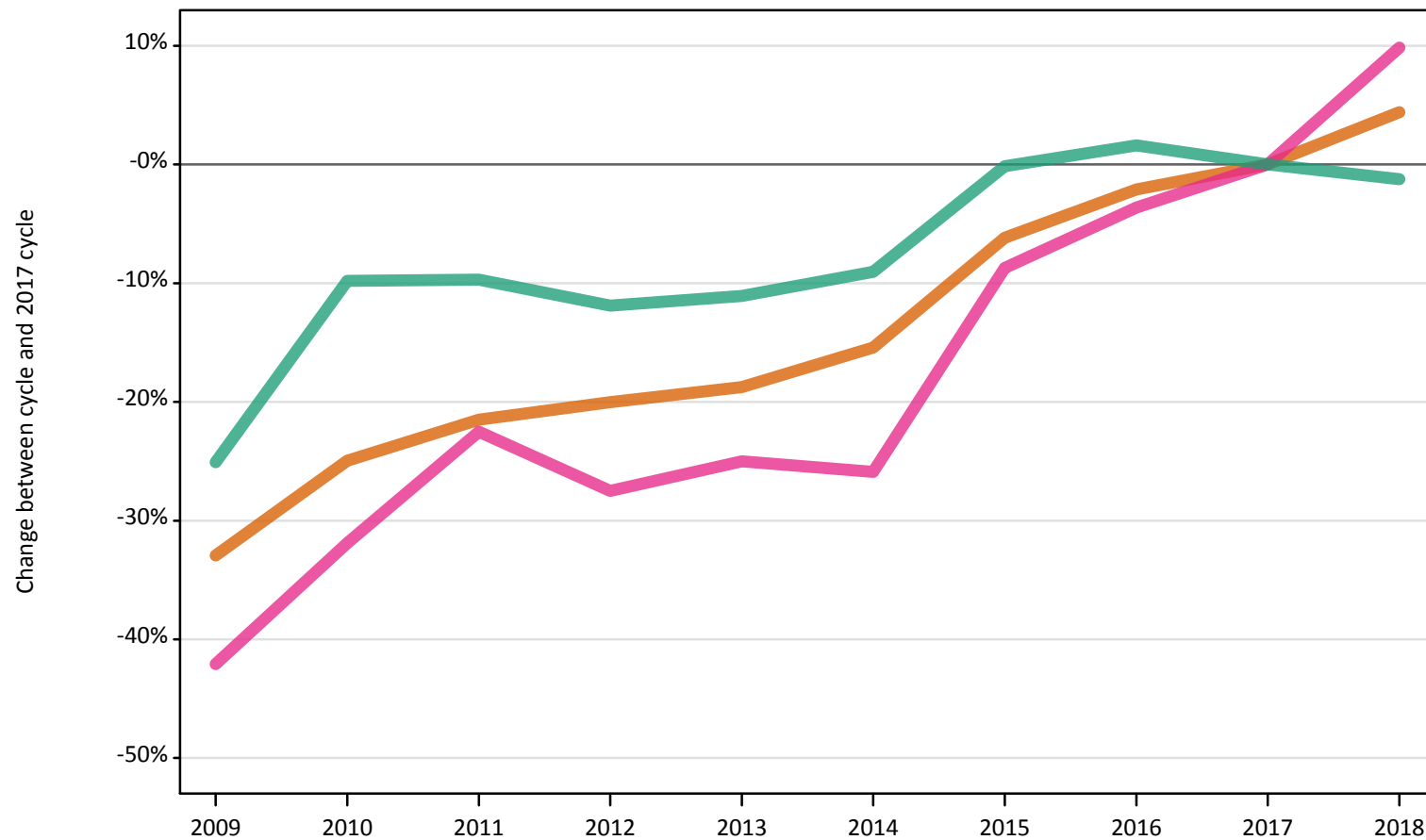
Difference between cycle and 2017 cycle

Age group and ethnic group of applicant		2009	2010	2011	2012	2013	2014	2015	2016	2017	2018
Under 18	Asian										
	Black										
	Mixed										
	White	141%	145%	100%	105%	55%	9%	36%	64%	0%	5%
	Other										
18	Asian	-42%	-38%	-34%	-39%	-26%	-20%	-11%	-4%	0%	10%
	Black	-73%	-73%	-54%	-50%	-23%	-23%	-38%	-8%	0%	-27%
	Mixed	-30%	-33%	-17%	-40%	-25%	-22%	-4%	-6%	0%	25%
	White	2%	6%	5%	3%	2%	0%	4%	3%	0%	-5%
	Other		-31%	-38%	-15%	-38%	8%	-38%	-8%	0%	46%
19	Asian	-47%	-43%	-33%	-13%	-7%	-27%	-22%	12%	0%	-17%
	Black			-10%			0%	-40%	60%	0%	80%
	Mixed	-42%	-32%	-39%	-39%	-55%	-50%	-39%	-21%	0%	-32%
	White	-37%	-21%	-7%	-18%	-9%	-6%	-5%	7%	0%	-6%
	Other		0%	-29%			-14%	-14%	-29%	0%	-14%
20 and over	Asian	-56%	-20%	-8%	3%	-19%	-10%	20%	15%	0%	14%
	Black	-60%	-27%	-35%	-31%	-21%	0%	-15%	4%	0%	-10%
	Mixed	-38%	-40%	7%	-36%	4%	-4%	20%	-16%	0%	33%
	White	-30%	-13%	-8%	-13%	4%	6%	5%	6%	0%	-6%
	Other	-33%	-8%	-8%	-8%	50%	8%	0%	25%	0%	17%
All ages	Asian	-44%	-35%	-27%	-24%	-20%	-19%	-6%	5%	0%	5%
	Black	-66%	-47%	-38%	-42%	-26%	-8%	-25%	6%	0%	-4%
	Mixed	-34%	-34%	-16%	-38%	-24%	-22%	-6%	-11%	0%	15%
	White	-13%	-3%	-0%	-5%	1%	1%	3%	4%	0%	-5%
	Other	-53%	-16%	-25%	-19%	-13%	3%	-19%	0%	0%	25%

Note: The percentage change is not recorded in the above table for groups with fewer than 10 applicants in that cycle or in the 2017 cycle.

I.10.13 Applicants by ethnic group: Scotland
Difference between cycle and 2017 cycle

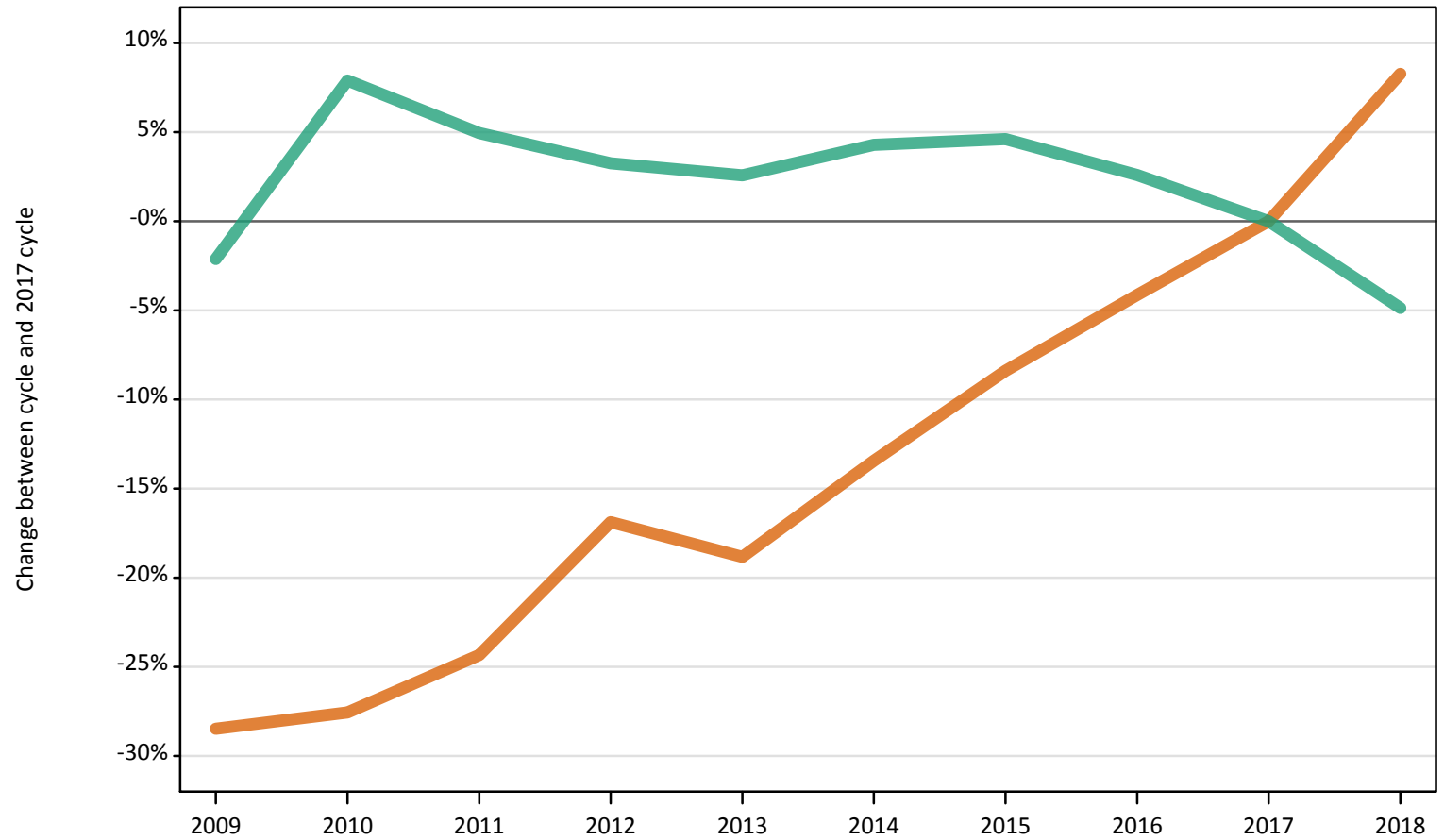
- Asian
- Black
- Mixed
- White
- Other



Note: The percentage change is not plotted in the above chart for groups with fewer than 500 applicants in any one cycle.

I.10.14 18 year old applicants by ethnic group: Scotland
Difference between cycle and 2017 cycle

- Asian
- Black
- Mixed
- White
- Other



Note: The percentage change is not plotted in the above chart for groups with fewer than 500 applicants in any one cycle.

I.10.15 Applicants by age and ethnic group: Scotland

Age group and ethnic group of applicant		2009	2010	2011	2012	2013	2014	2015	2016	2017	2018
Under 18	Asian	60	60	60	40	40	30	30	40	50	60
	Black	10	20	10	10	10	10	10	20	20	20
	Mixed	20	20	20	20	10	20	20	10	10	20
	White	930	880	840	730	620	610	660	690	710	670
	Other	0	10	0	10	10	10	10	10	10	10
18	Asian	620	630	660	720	710	750	800	840	870	940
	Black	50	70	80	90	110	100	130	140	170	210
	Mixed	200	230	290	250	290	280	330	350	350	370
	White	17,000	18,740	18,220	17,930	17,810	18,110	18,170	17,820	17,370	16,520
	Other	40	20	50	60	60	60	90	90	80	90
19	Asian	220	270	280	290	280	280	300	310	330	340
	Black	30	30	50	40	40	50	60	60	70	80
	Mixed	90	90	100	90	110	100	110	140	130	140
	White	4,030	5,010	5,140	5,210	5,090	5,060	5,230	5,420	5,300	5,410
	Other	20	10	20	30	20	20	30	40	40	40
20 and over	Asian	590	700	740	720	780	810	960	990	980	980
	Black	310	500	500	560	490	540	620	590	660	640
	Mixed	200	260	280	270	260	260	350	350	400	440
	White	11,220	15,320	15,790	15,150	15,860	16,500	20,160	21,070	20,910	21,140
	Other	50	70	70	90	110	120	150	160	140	180
All ages	Asian	1,490	1,670	1,750	1,780	1,810	1,880	2,090	2,180	2,220	2,320
	Black	400	620	640	700	650	700	820	800	910	940
	Mixed	510	600	690	640	660	660	810	850	880	970
	White	33,180	39,940	39,990	39,020	39,380	40,280	44,220	44,990	44,290	43,740
	Other	110	110	130	190	200	210	270	300	280	320

I.10.16 Applicants by age and ethnic group: Scotland

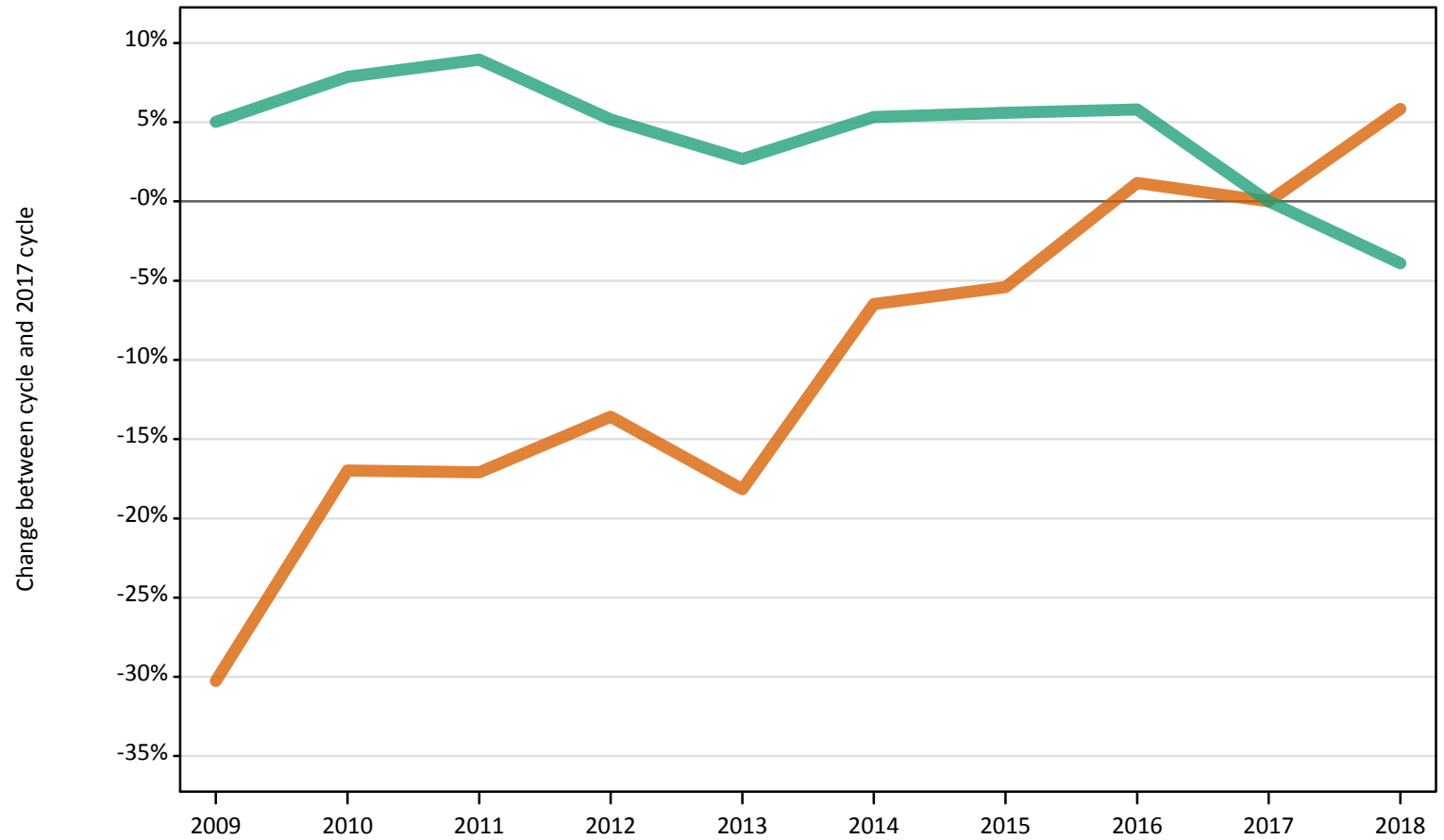
Difference between cycle and 2017 cycle

Age group and ethnic group of applicant		2009	2010	2011	2012	2013	2014	2015	2016	2017	2018
Under 18	Asian	20%	35%	26%	-11%	-20%	-28%	-30%	-4%	0%	30%
	Black	-74%	-21%	-37%	-53%	-58%	-68%	-42%	-5%	0%	-11%
	Mixed	62%	69%	23%	85%	0%	46%	15%	8%	0%	38%
	White	31%	24%	18%	2%	-13%	-14%	-7%	-3%	0%	-6%
	Other		-58%		-42%	-17%	-42%	-50%	-25%	0%	-42%
18	Asian	-28%	-28%	-24%	-17%	-19%	-13%	-8%	-4%	0%	8%
	Black	-69%	-55%	-49%	-44%	-35%	-37%	-24%	-15%	0%	27%
	Mixed	-43%	-33%	-16%	-27%	-18%	-18%	-5%	-1%	0%	6%
	White	-2%	8%	5%	3%	3%	4%	5%	3%	0%	-5%
	Other	-54%	-72%	-43%	-30%	-22%	-22%	8%	8%	0%	14%
19	Asian	-32%	-17%	-13%	-10%	-15%	-14%	-9%	-6%	0%	3%
	Black	-49%	-49%	-23%	-32%	-35%	-23%	-12%	-9%	0%	15%
	Mixed	-25%	-33%	-21%	-29%	-17%	-24%	-10%	11%	0%	11%
	White	-24%	-5%	-3%	-2%	-4%	-4%	-1%	2%	0%	2%
	Other	-52%	-76%	-55%	-26%	-55%	-43%	-40%	-7%	0%	2%
20 and over	Asian	-40%	-28%	-24%	-27%	-20%	-17%	-2%	1%	0%	0%
	Black	-53%	-25%	-24%	-16%	-25%	-18%	-5%	-11%	0%	-3%
	Mixed	-50%	-34%	-30%	-31%	-35%	-36%	-12%	-11%	0%	12%
	White	-46%	-27%	-24%	-28%	-24%	-21%	-4%	1%	0%	1%
	Other	-64%	-51%	-55%	-36%	-21%	-17%	6%	13%	0%	25%
All ages	Asian	-33%	-25%	-22%	-20%	-19%	-15%	-6%	-2%	0%	4%
	Black	-56%	-32%	-29%	-23%	-28%	-23%	-10%	-11%	0%	4%
	Mixed	-42%	-32%	-23%	-27%	-25%	-26%	-9%	-4%	0%	10%
	White	-25%	-10%	-10%	-12%	-11%	-9%	-0%	2%	0%	-1%
	Other	-61%	-61%	-53%	-33%	-26%	-23%	-3%	7%	0%	16%

Note: The percentage change is not recorded in the above table for groups with fewer than 10 applicants in that cycle or in the 2017 cycle.

I.10.17 Applicants by ethnic group: Wales
Difference between cycle and 2017 cycle

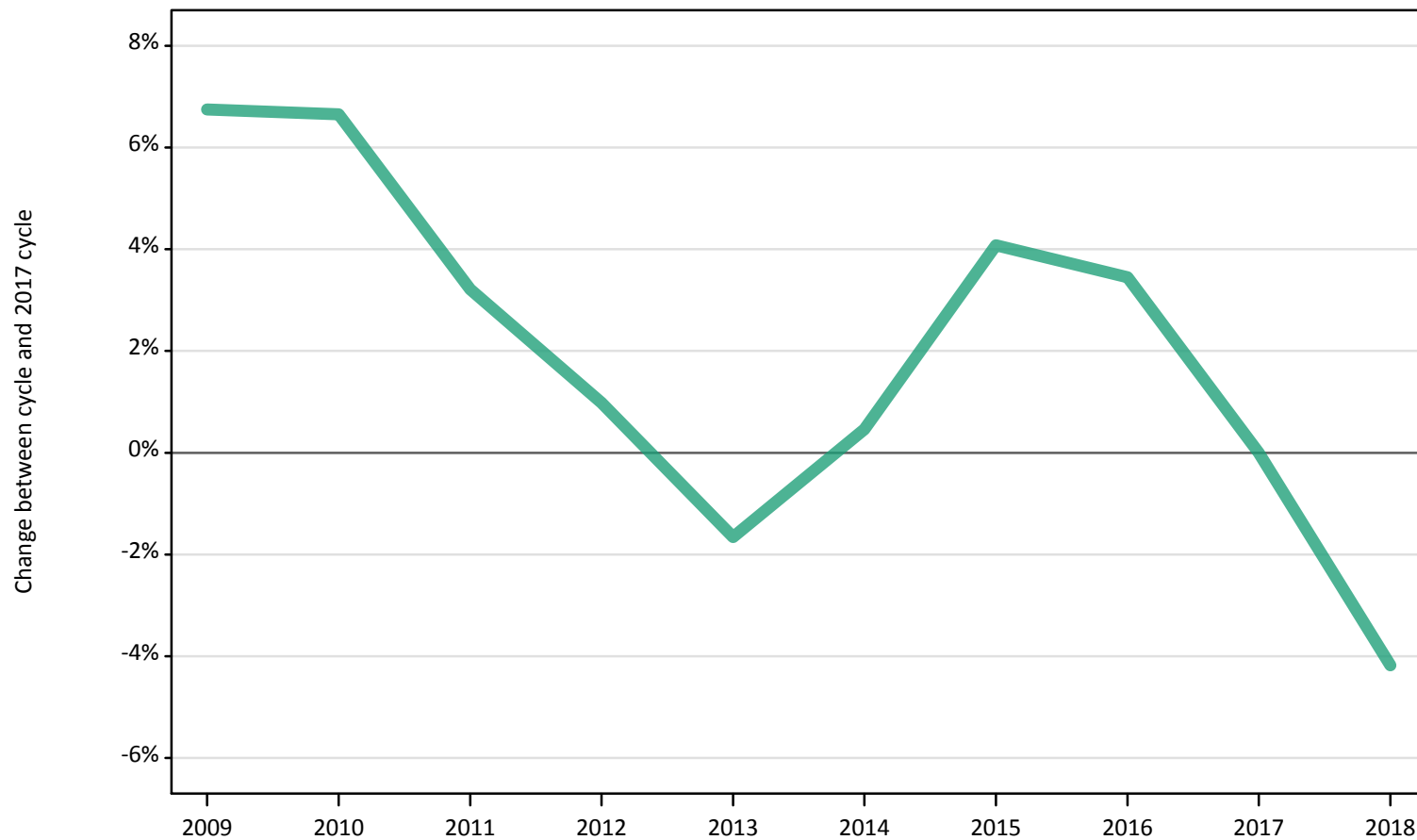
- Asian
- Black
- Mixed
- White
- Other



Note: The percentage change is not plotted in the above chart for groups with fewer than 500 applicants in any one cycle.

I.10.18 18 year old applicants by ethnic group: Wales
Difference between cycle and 2017 cycle

- Asian
- Black
- Mixed
- White
- Other



Note: The percentage change is not plotted in the above chart for groups with fewer than 500 applicants in any one cycle.

I.10.19 Applicants by age and ethnic group: Wales

Age group and ethnic group of applicant		2009	2010	2011	2012	2013	2014	2015	2016	2017	2018
Under 18	Asian	0	10	0	0	0	0	0	0	0	0
	Black	0	0	0	0	0	0	0	0	0	0
	Mixed	0	10	0	0	0	0	0	0	0	0
	White	40	40	40	20	30	20	20	20	20	20
	Other	0	0	0	0	0	0	0	0	0	0
18	Asian	280	330	310	330	310	420	400	460	460	540
	Black	60	50	50	90	70	100	90	110	120	120
	Mixed	190	190	230	200	220	240	280	270	250	290
	White	11,330	11,320	10,960	10,720	10,440	10,660	11,050	10,980	10,610	10,170
	Other	40	40	40	50	50	90	70	80	70	80
19	Asian	170	180	170	200	190	200	220	190	210	200
	Black	30	50	50	70	70	70	70	70	70	60
	Mixed	70	90	90	100	90	90	110	120	100	120
	White	3,480	3,690	3,960	3,720	3,740	3,880	3,750	3,900	3,510	3,360
	Other	20	20	20	40	40	40	40	40	50	30
20 and over	Asian	210	260	300	290	260	260	270	300	280	260
	Black	210	220	240	250	240	240	250	260	240	240
	Mixed	120	150	170	150	140	180	150	170	210	200
	White	6,420	6,790	7,120	6,850	6,590	6,770	6,580	6,540	6,120	5,920
	Other	40	50	50	70	60	80	70	80	70	70
All ages	Asian	660	780	780	810	770	880	890	950	940	1,000
	Black	300	320	340	410	380	410	410	450	430	430
	Mixed	380	430	500	460	450	510	550	570	560	610
	White	21,270	21,850	22,070	21,310	20,800	21,340	21,390	21,430	20,260	19,470
	Other	100	110	110	160	150	210	180	210	180	190

I.10.20 Applicants by age and ethnic group: Wales

Difference between cycle and 2017 cycle

Age group and ethnic group of applicant		2009	2010	2011	2012	2013	2014	2015	2016	2017	2018
Under 18	Asian										
	Black										
	Mixed										
	White	129%	153%	124%	12%	82%	35%	0%	24%	0%	29%
	Other										
18	Asian	-39%	-27%	-33%	-28%	-32%	-7%	-12%	0%	0%	18%
	Black	-51%	-61%	-58%	-25%	-41%	-17%	-22%	-3%	0%	3%
	Mixed	-24%	-23%	-8%	-18%	-13%	-4%	13%	10%	0%	18%
	White	7%	7%	3%	1%	-2%	0%	4%	3%	0%	-4%
	Other	-42%	-36%	-42%	-20%	-24%	33%	3%	27%	0%	27%
19	Asian	-20%	-13%	-18%	-5%	-7%	-4%	7%	-8%	0%	-6%
	Black	-60%	-30%	-24%	-7%	1%	4%	3%	4%	0%	-13%
	Mixed	-29%	-7%	-5%	1%	-8%	-8%	12%	24%	0%	19%
	White	-1%	5%	13%	6%	7%	10%	7%	11%	0%	-4%
	Other	-62%	-60%	-57%	-19%	-19%	-13%	-9%	-13%	0%	-34%
20 and over	Asian	-24%	-6%	8%	3%	-5%	-8%	-4%	9%	0%	-7%
	Black	-12%	-8%	-0%	5%	-1%	-2%	2%	10%	0%	0%
	Mixed	-45%	-31%	-18%	-29%	-33%	-16%	-28%	-19%	0%	-3%
	White	5%	11%	16%	12%	8%	11%	8%	7%	0%	-3%
	Other	-46%	-22%	-32%	4%	-7%	24%	4%	22%	0%	9%
All ages	Asian	-30%	-17%	-17%	-14%	-18%	-6%	-5%	1%	0%	6%
	Black	-30%	-26%	-20%	-5%	-11%	-5%	-4%	6%	0%	-1%
	Mixed	-32%	-22%	-11%	-18%	-19%	-9%	-2%	2%	0%	10%
	White	5%	8%	9%	5%	3%	5%	6%	6%	0%	-4%
	Other	-48%	-38%	-42%	-11%	-16%	16%	0%	14%	0%	3%

Note: The percentage change is not recorded in the above table for groups with fewer than 10 applicants in that cycle or in the 2017 cycle.

I.10.21 Technical notes and definitions

Applicants have been able to submit applications for all 2018 courses since early September.

Applicants who submit their applications to UCAS by the January deadline are considered 'on time' applicants for the large majority of courses offered through UCAS. Some art and design courses have a later deadline of 24 March. By definition all main scheme applications have been received by the 30 June deadline.

Counts of the number of applicants reported have been rounded to the nearest 10 applicants, this may result in instances where totals do not equal the sum of the components. Proportional changes have been rounded to the nearest whole percentage point.

Age

This statistical release uses country-specific age definitions which align with the cut off points for school/college cohorts within the different administrations of the UK. For England and Wales ages are defined on the 31 August, for Northern Ireland on the 1 July and for Scotland on the 28 February the following year. Defining ages in this way matches the assignment of children to school cohorts. For applicants outside of the UK the cohort cut off for England and Wales has been used.

Applicant

A person who has made an application in the UCAS system during the cycle reported (including applications for deferred entry). Records of prior acceptance (RPAs) are excluded.

Application

An application to a course at a provider made by an applicant in the UCAS main scheme. Applicants may make up to five main scheme applications.

Country of provider

An applicant may be counted once for each provider country they have applied to in the main scheme. If an applicant has applied to providers in multiple countries then the applicant is counted once within each country of provider applied to.

Domicile

Declared area of permanent residence. The Channel Islands and the Isle of Man have been assigned as 'Not EU'.

Ethnic group

High level grouping of ethnic origin as declared by the applicant: 'Asian', 'Black', 'Mixed', 'White', 'Other', 'Unknown'.

First time applicant

An applicant that did not apply to the UCAS scheme in the previous cycle.

Main scheme

The main UCAS application scheme through which up to five providers/courses can be applied to. This opens in September and closes to new applications on 30 June the following year.

Reapplicant

An applicant that applied to the UCAS scheme in the previous cycle.

Sex

As declared by the applicant.

SIMD 2016

Scottish Index of Multiple Deprivation identifies small area concentrations of multiple deprivation across all of Scotland, providing a relative measure of deprivation among small areas (data zones). In this report, the SIMD 2016 has been used to group areas in each year in the times series.

POLAR3

Developed by HEFCE and classifies small areas across the UK into five groups, according to their level of young participation in HE. Each of these groups represents around 20 per cent of young people, and is ranked from quintile 1 (areas with the lowest young participation rates, considered as the most disadvantaged) to quintile 5 (highest young participation rates, considered most advantaged).

POLAR4

Developed by HEFCE and classifies small areas across the UK into five groups, according to their level of young participation in HE. Each of these groups represents around 20 per cent of young people, and is ranked from quintile 1 (areas with the lowest young participation rates, considered as the most disadvantaged) to quintile 5 (highest young participation rates, considered most advantaged). POLAR4 is the most recent version of the POLAR classification, and is available for the first time in UCAS? reporting since its launch in 2017.

Tariff Group of provider

Providers are grouped as higher, medium or lower tariff based on their average levels of attainment of their accepted applicants (summarised through UCAS Tariff points) in recent cycles. Each group of providers accounted for around a third of all UK 18 year old acceptances in recent cycles.

Subject group

The JACS3 classification used to classify courses into subject groups.