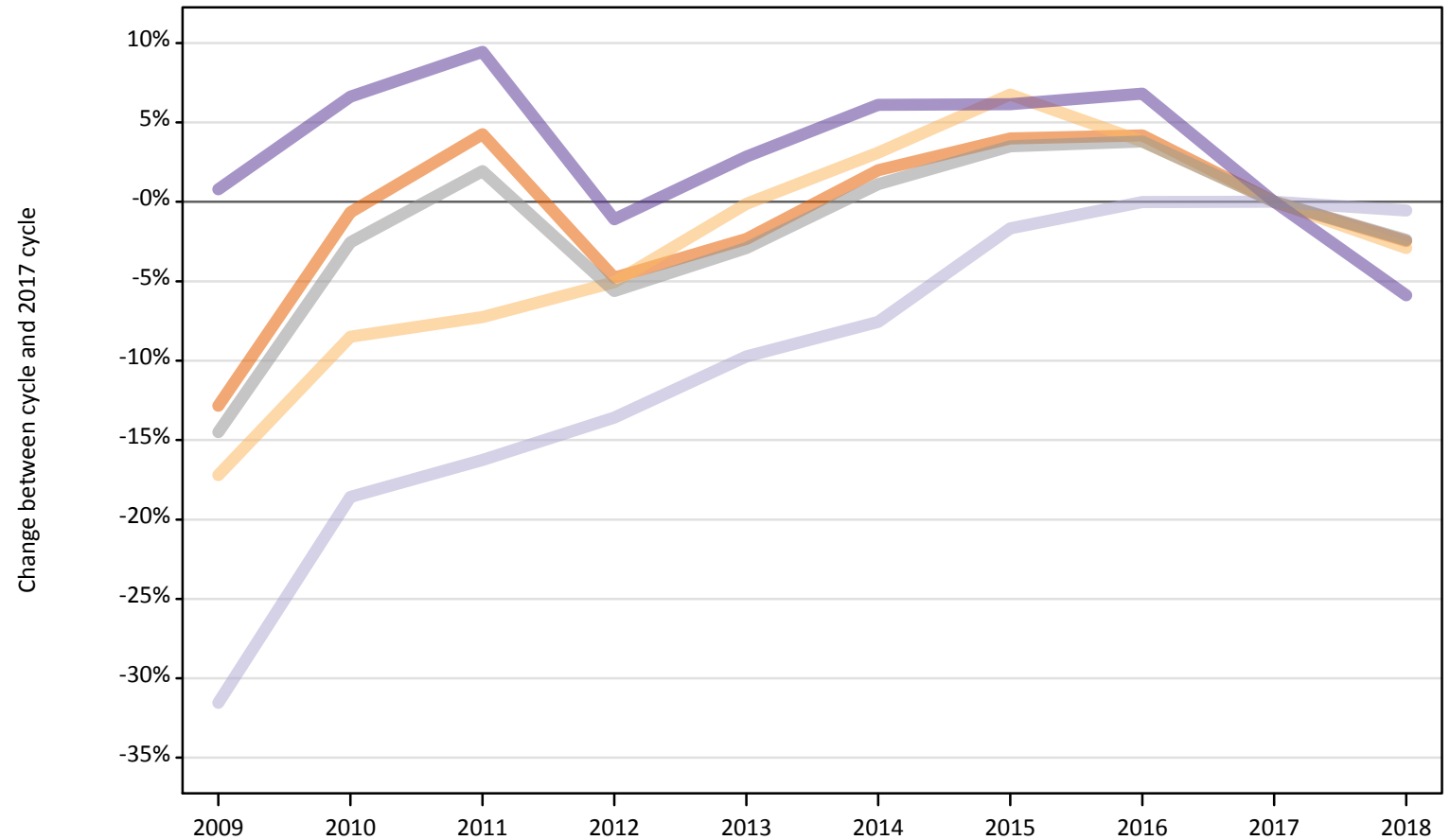


June Deadline Analysis: Providers

Applications by country and type of provider at the 30 June deadline

I.5.1 Applications by domicile and country of provider : All domiciles Difference between cycle and 2017 cycle

- England
- Northern Ireland
- Scotland
- Wales
- UK



Note: The percentage change is not plotted in the above chart for groups with fewer than 500 applications in any one cycle.

I.5.2 Applications by domicile and country of provider : All domiciles

Domicile of applicant and country of provider		2009	2010	2011	2012	2013	2014	2015	2016	2017	2018
All domiciles	England	2,022,640	2,305,400	2,419,570	2,210,010	2,266,440	2,367,110	2,413,220	2,417,850	2,320,800	2,263,600
	Northern Ireland	51,070	56,440	57,210	58,570	61,610	63,590	65,860	64,030	61,690	59,890
	Scotland	210,970	250,950	258,120	266,340	278,200	284,900	303,060	308,140	308,180	306,520
	Wales	103,980	109,990	112,910	102,040	106,110	109,470	109,520	110,200	103,170	97,110
	UK	2,388,660	2,722,780	2,847,810	2,636,960	2,712,360	2,825,070	2,891,650	2,900,210	2,793,830	2,727,120

I.5.3 Applications by domicile and country of provider : All domiciles

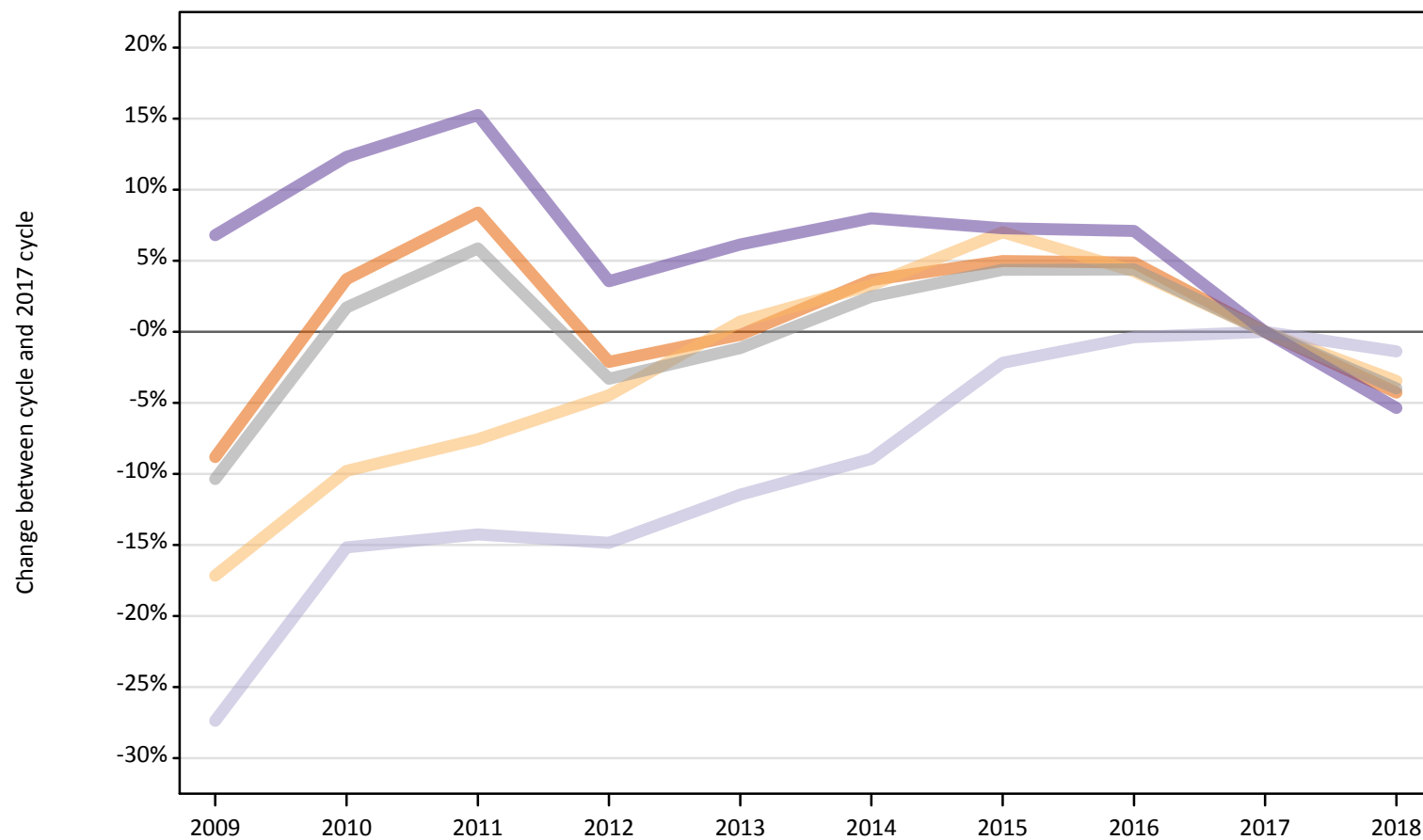
Difference between cycle and 2017 cycle

Domicile of applicant and country of provider		2009	2010	2011	2012	2013	2014	2015	2016	2017	2018
All domiciles	England	-13%	-1%	4%	-5%	-2%	2%	4%	4%	0%	-2%
	Northern Ireland	-17%	-9%	-7%	-5%	-0%	3%	7%	4%	0%	-3%
	Scotland	-32%	-19%	-16%	-14%	-10%	-8%	-2%	-0%	0%	-1%
	Wales	1%	7%	9%	-1%	3%	6%	6%	7%	0%	-6%
	UK	-15%	-3%	2%	-6%	-3%	1%	4%	4%	0%	-2%

Note: The percentage change is not recorded in the above table for groups with fewer than 10 applicants in that cycle or in the 2017 cycle.

I.5.4 Applications by domicile and country of provider : UK
Difference between cycle and 2017 cycle

- England
- Northern Ireland
- Scotland
- Wales
- UK



Note: The percentage change is not plotted in the above chart for groups with fewer than 500 applications in any one cycle.

I.5.5 Applications by domicile and country of provider : UK

Domicile of applicant and country of provider		2009	2010	2011	2012	2013	2014	2015	2016	2017	2018
UK	England	1,721,280	1,957,260	2,045,740	1,847,430	1,883,260	1,956,080	1,981,180	1,979,290	1,887,430	1,806,820
	Northern Ireland	46,780	50,940	52,190	53,940	56,870	58,320	60,420	58,870	56,470	54,510
	Scotland	172,990	202,030	204,210	202,830	210,880	216,880	232,950	237,260	238,170	234,870
	Wales	92,740	97,520	100,070	89,930	92,180	93,770	93,170	93,000	86,840	82,180
	UK	2,033,790	2,307,750	2,402,210	2,194,130	2,243,190	2,325,050	2,367,720	2,368,420	2,268,910	2,178,390

I.5.6 Applications by domicile and country of provider : UK

Difference between cycle and 2017 cycle

Domicile of applicant and country of provider		2009	2010	2011	2012	2013	2014	2015	2016	2017	2018
UK	England	-9%	4%	8%	-2%	-0%	4%	5%	5%	0%	-4%
	Northern Ireland	-17%	-10%	-8%	-4%	1%	3%	7%	4%	0%	-3%
	Scotland	-27%	-15%	-14%	-15%	-11%	-9%	-2%	-0%	0%	-1%
	Wales	7%	12%	15%	4%	6%	8%	7%	7%	0%	-5%
	UK	-10%	2%	6%	-3%	-1%	2%	4%	4%	0%	-4%

Note: The percentage change is not recorded in the above table for groups with fewer than 10 applicants in that cycle or in the 2017 cycle.

I.5.7 Applications by domicile and country of provider : England Difference between cycle and 2017 cycle

- England
- Northern Ireland
- Scotland
- Wales
- UK



Note: The percentage change is not plotted in the above chart for groups with fewer than 500 applications in any one cycle.

I.5.8 Applications by domicile and country of provider : England

Domicile of applicant and country of provider		2009	2010	2011	2012	2013	2014	2015	2016	2017	2018
England	England	1,649,350	1,875,100	1,957,100	1,763,610	1,799,080	1,867,540	1,889,510	1,885,420	1,798,560	1,722,460
	Northern Ireland	1,840	1,610	1,930	2,260	2,460	2,790	3,380	2,650	2,580	2,650
	Scotland	38,810	39,760	33,430	31,540	36,160	36,660	37,330	37,560	39,440	38,830
	Wales	44,540	49,830	51,100	44,240	48,870	51,370	51,760	51,340	47,460	44,310
	UK	1,734,540	1,966,290	2,043,550	1,841,650	1,886,570	1,958,350	1,981,970	1,976,970	1,888,050	1,808,260

I.5.9 Applications by domicile and country of provider : England

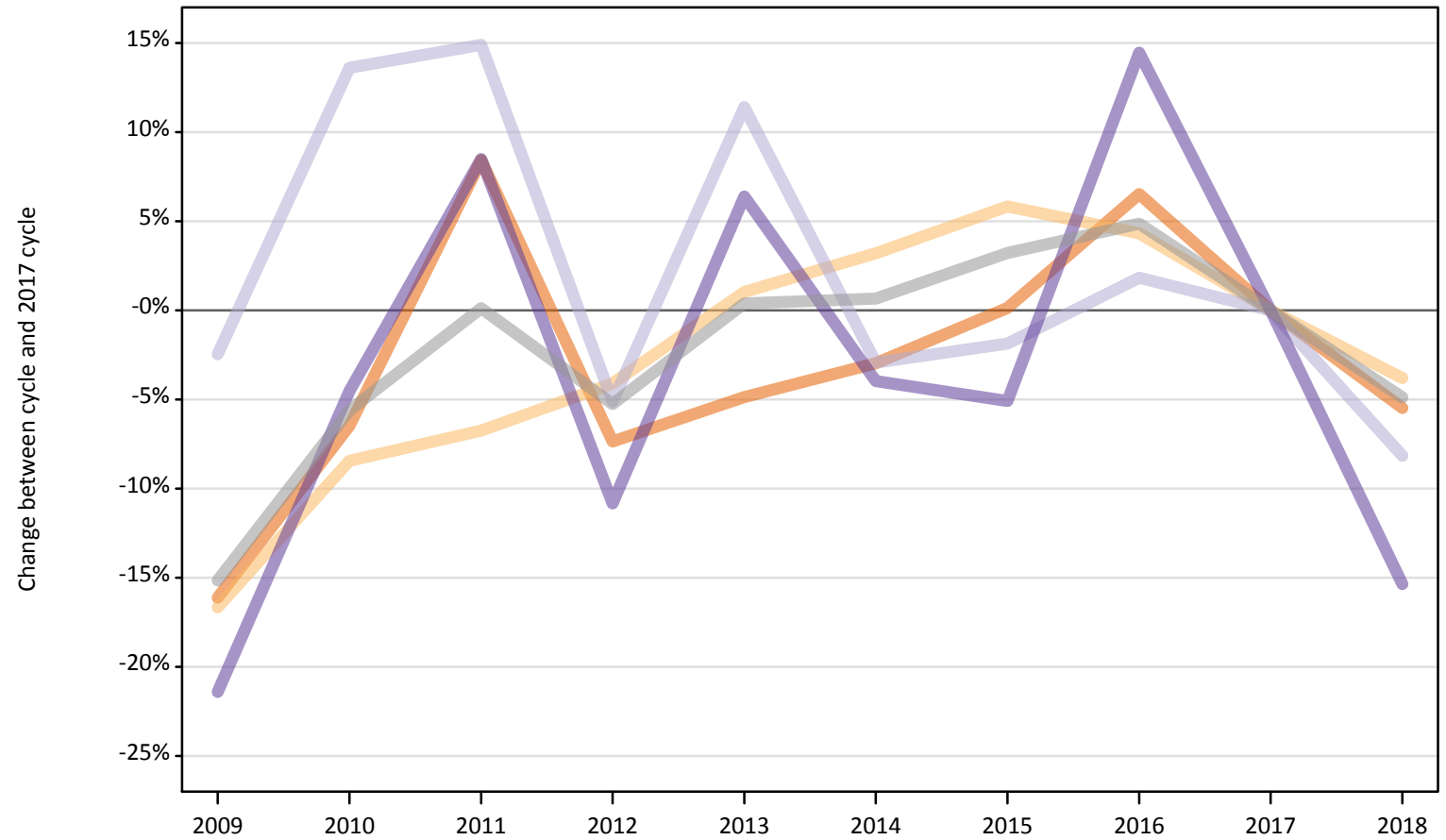
Difference between cycle and 2017 cycle

Domicile of applicant and country of provider		2009	2010	2011	2012	2013	2014	2015	2016	2017	2018
England	England	-8%	4%	9%	-2%	0%	4%	5%	5%	0%	-4%
	Northern Ireland	-29%	-38%	-25%	-13%	-5%	8%	31%	2%	0%	3%
	Scotland	-2%	1%	-15%	-20%	-8%	-7%	-5%	-5%	0%	-2%
	Wales	-6%	5%	8%	-7%	3%	8%	9%	8%	0%	-7%
	UK	-8%	4%	8%	-2%	-0%	4%	5%	5%	0%	-4%

Note: The percentage change is not recorded in the above table for groups with fewer than 10 applicants in that cycle or in the 2017 cycle.

I.5.10 Applications by domicile and country of provider : Northern Ireland
Difference between cycle and 2017 cycle

- England
- Northern Ireland
- Scotland
- Wales
- UK



Note: The percentage change is not plotted in the above chart for groups with fewer than 500 applications in any one cycle.

I.5.11 Applications by domicile and country of provider : Northern Ireland

Domicile of applicant and country of provider		2009	2010	2011	2012	2013	2014	2015	2016	2017	2018
Northern Ireland	England	22,600	25,190	29,210	24,960	25,620	26,140	26,970	28,700	26,940	25,460
	Northern Ireland	44,660	49,050	49,960	51,380	54,130	55,300	56,700	55,890	53,580	51,540
	Scotland	8,810	10,270	10,380	8,570	10,070	8,770	8,870	9,200	9,040	8,300
	Wales	970	1,180	1,340	1,100	1,320	1,190	1,180	1,420	1,240	1,050
	UK	77,040	85,690	90,890	86,010	91,130	91,390	93,720	95,200	90,790	86,350

I.5.12 Applications by domicile and country of provider : Northern Ireland

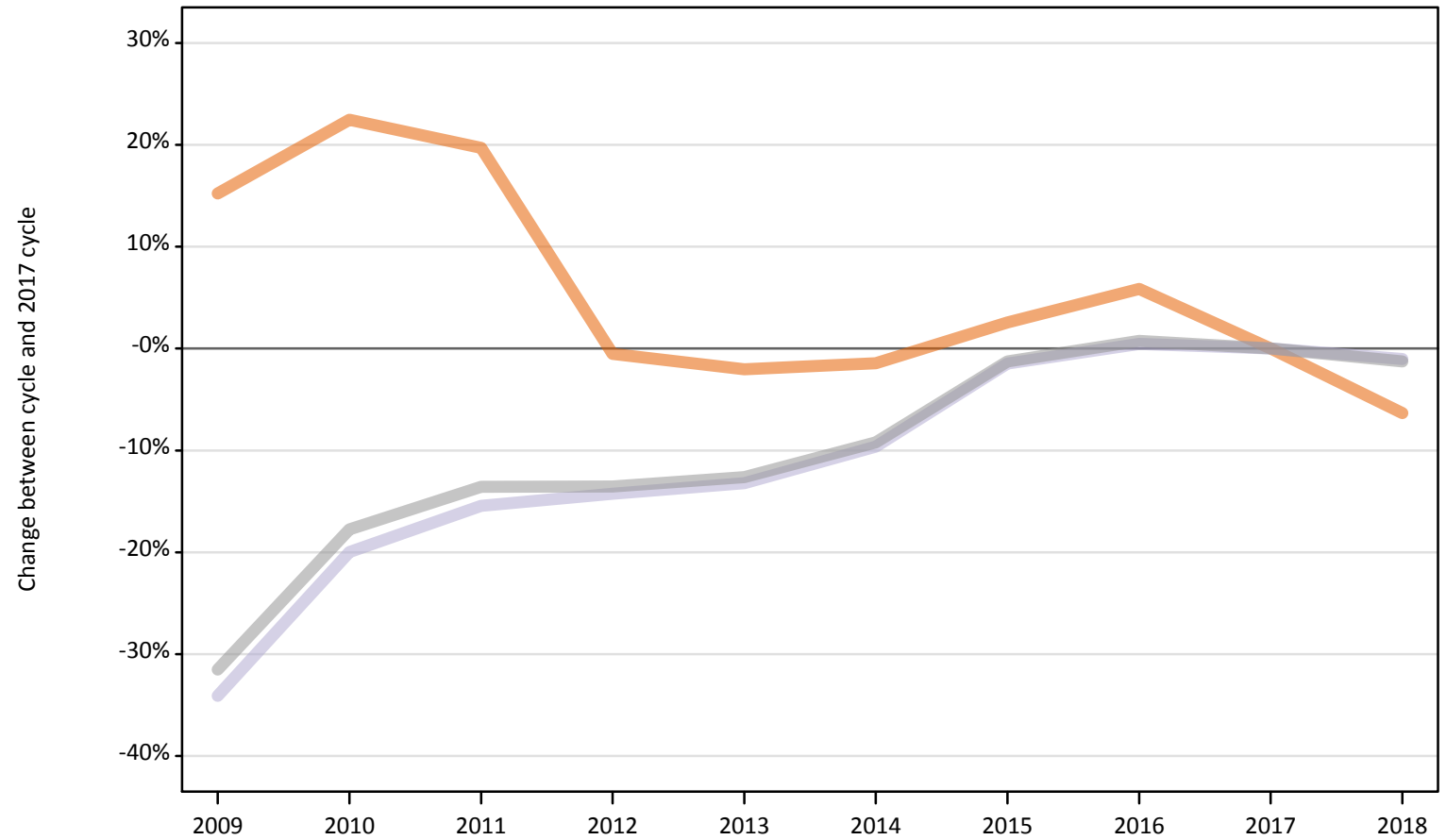
Difference between cycle and 2017 cycle

Domicile of applicant and country of provider		2009	2010	2011	2012	2013	2014	2015	2016	2017	2018
Northern Ireland	England	-16%	-6%	8%	-7%	-5%	-3%	0%	7%	0%	-5%
	Northern Ireland	-17%	-8%	-7%	-4%	1%	3%	6%	4%	0%	-4%
	Scotland	-2%	14%	15%	-5%	11%	-3%	-2%	2%	0%	-8%
	Wales	-21%	-5%	8%	-11%	6%	-4%	-5%	14%	0%	-15%
	UK	-15%	-6%	0%	-5%	0%	1%	3%	5%	0%	-5%

Note: The percentage change is not recorded in the above table for groups with fewer than 10 applicants in that cycle or in the 2017 cycle.

I.5.13 Applications by domicile and country of provider : Scotland
Difference between cycle and 2017 cycle

- England
- Northern Ireland
- Scotland
- Wales
- UK



Note: The percentage change is not plotted in the above chart for groups with fewer than 500 applications in any one cycle.

I.5.14 Applications by domicile and country of provider : Scotland

Domicile of applicant and country of provider		2009	2010	2011	2012	2013	2014	2015	2016	2017	2018
Scotland	England	11,360	12,080	11,810	9,810	9,660	9,720	10,120	10,440	9,860	9,240
	Northern Ireland	200	200	220	210	200	140	230	230	200	200
	Scotland	124,220	150,850	159,370	161,620	163,580	170,370	185,700	189,350	188,480	186,570
	Wales	360	400	390	250	250	260	250	230	240	240
	UK	136,140	163,530	171,790	171,890	173,690	180,490	196,280	200,260	198,780	196,250

I.5.15 Applications by domicile and country of provider : Scotland

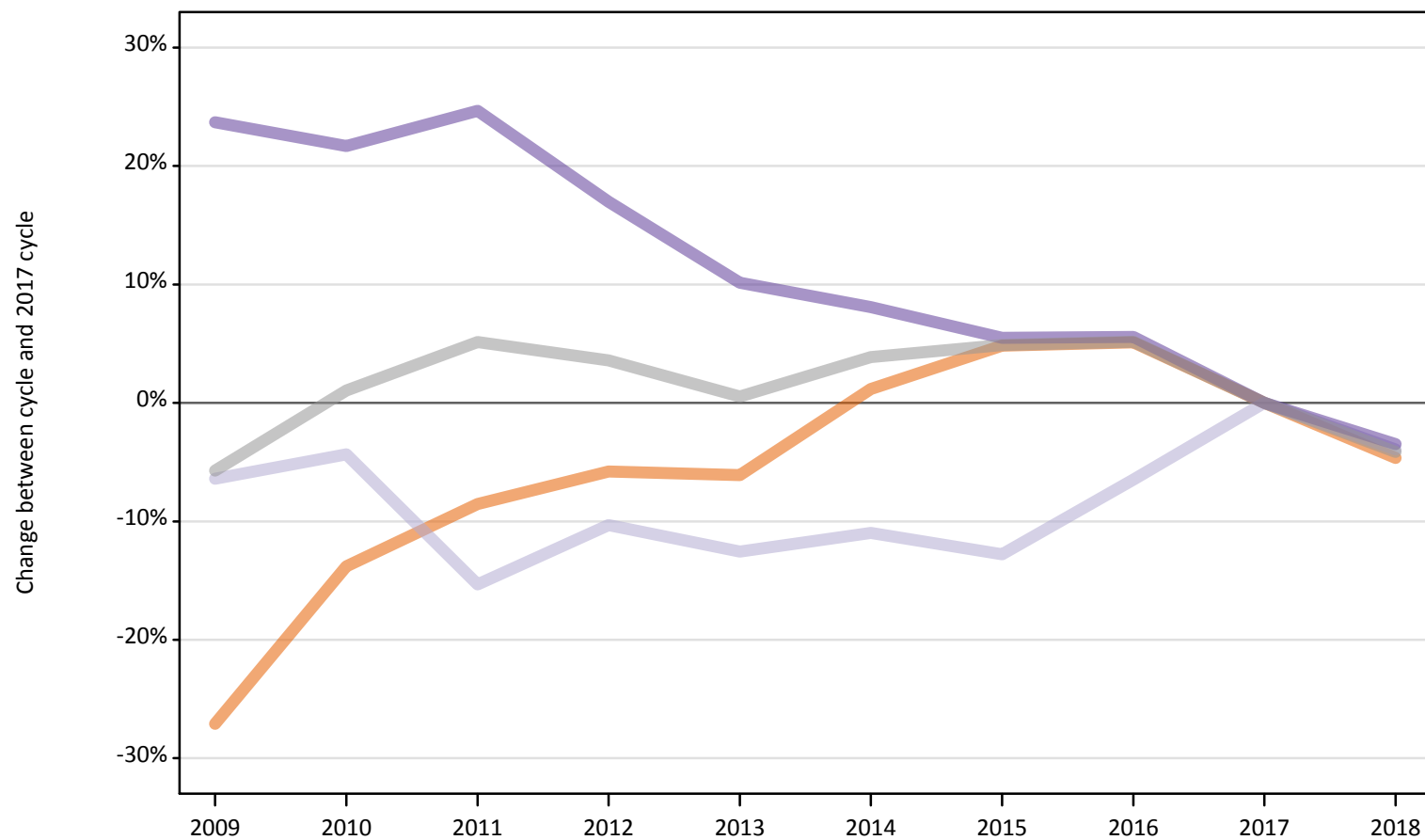
Difference between cycle and 2017 cycle

Domicile of applicant and country of provider		2009	2010	2011	2012	2013	2014	2015	2016	2017	2018
Scotland	England	15%	22%	20%	-1%	-2%	-1%	3%	6%	0%	-6%
	Northern Ireland	-2%	1%	7%	3%	-1%	-30%	12%	16%	0%	-2%
	Scotland	-34%	-20%	-15%	-14%	-13%	-10%	-1%	0%	0%	-1%
	Wales	47%	65%	62%	5%	3%	7%	2%	-4%	0%	1%
	UK	-32%	-18%	-14%	-14%	-13%	-9%	-1%	1%	0%	-1%

Note: The percentage change is not recorded in the above table for groups with fewer than 10 applicants in that cycle or in the 2017 cycle.

I.5.16 Applications by domicile and country of provider : Wales
Difference between cycle and 2017 cycle

- England
- Northern Ireland
- Scotland
- Wales
- UK



Note: The percentage change is not plotted in the above chart for groups with fewer than 500 applications in any one cycle.

I.5.17 Applications by domicile and country of provider : Wales

Domicile of applicant and country of provider		2009	2010	2011	2012	2013	2014	2015	2016	2017	2018
Wales	England	37,970	44,890	47,630	49,050	48,900	52,690	54,590	54,740	52,070	49,650
	Northern Ireland	90	70	80	90	90	90	110	100	110	120
	Scotland	1,140	1,170	1,030	1,090	1,070	1,090	1,060	1,140	1,220	1,170
	Wales	46,880	46,110	47,240	44,330	41,740	40,960	39,990	40,010	37,900	36,580
	UK	86,080	92,240	95,990	94,580	91,790	94,830	95,750	96,000	91,300	87,530

I.5.18 Applications by domicile and country of provider : Wales

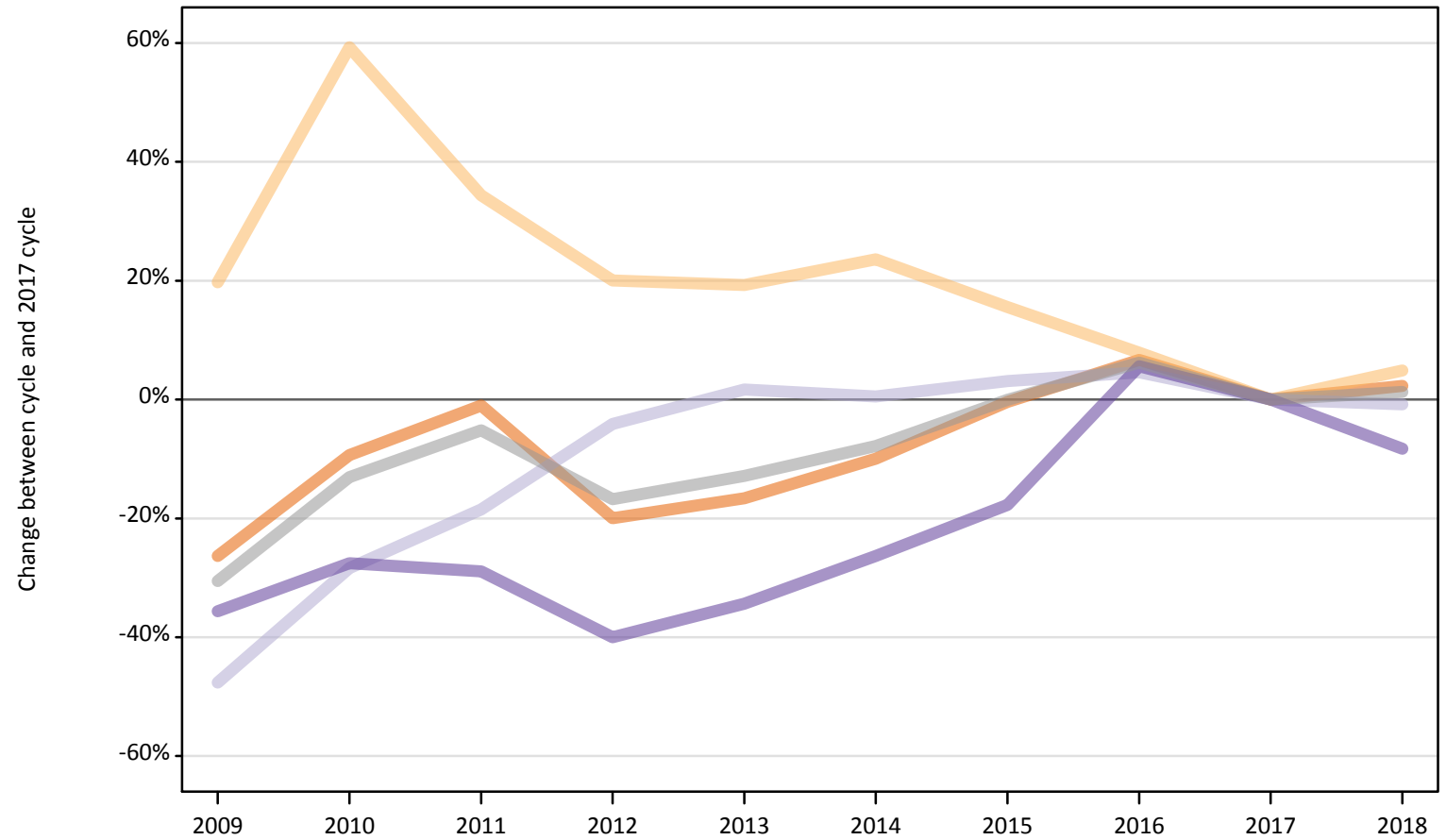
Difference between cycle and 2017 cycle

Domicile of applicant and country of provider		2009	2010	2011	2012	2013	2014	2015	2016	2017	2018
Wales	England	-27%	-14%	-9%	-6%	-6%	1%	5%	5%	0%	-5%
	Northern Ireland	-15%	-30%	-24%	-10%	-17%	-11%	6%	-1%	0%	12%
	Scotland	-6%	-4%	-15%	-10%	-13%	-11%	-13%	-6%	0%	-4%
	Wales	24%	22%	25%	17%	10%	8%	6%	6%	0%	-3%
	UK	-6%	1%	5%	4%	1%	4%	5%	5%	0%	-4%

Note: The percentage change is not recorded in the above table for groups with fewer than 10 applicants in that cycle or in the 2017 cycle.

I.5.19 Applications by domicile and country of provider : EU (excluding UK)
Difference between cycle and 2017 cycle

- England
- Northern Ireland
- Scotland
- Wales
- UK



Note: The percentage change is not plotted in the above chart for groups with fewer than 500 applications in any one cycle.

I.5.20 Applications by domicile and country of provider : EU (excluding UK)

Domicile of applicant and country of provider		2009	2010	2011	2012	2013	2014	2015	2016	2017	2018
EU (excluding UK)	England	116,800	143,710	156,970	126,840	132,210	142,780	157,920	169,130	158,540	162,160
	Northern Ireland	3,560	4,740	4,000	3,570	3,550	3,680	3,440	3,210	2,980	3,120
	Scotland	23,820	32,590	37,070	43,610	46,240	45,720	46,890	47,570	45,490	45,110
	Wales	4,880	5,500	5,390	4,550	4,980	5,590	6,240	8,010	7,590	6,960
	UK	149,070	186,540	203,430	178,580	186,980	197,770	214,490	227,920	214,580	217,350

I.5.21 Applications by domicile and country of provider : EU (excluding UK)

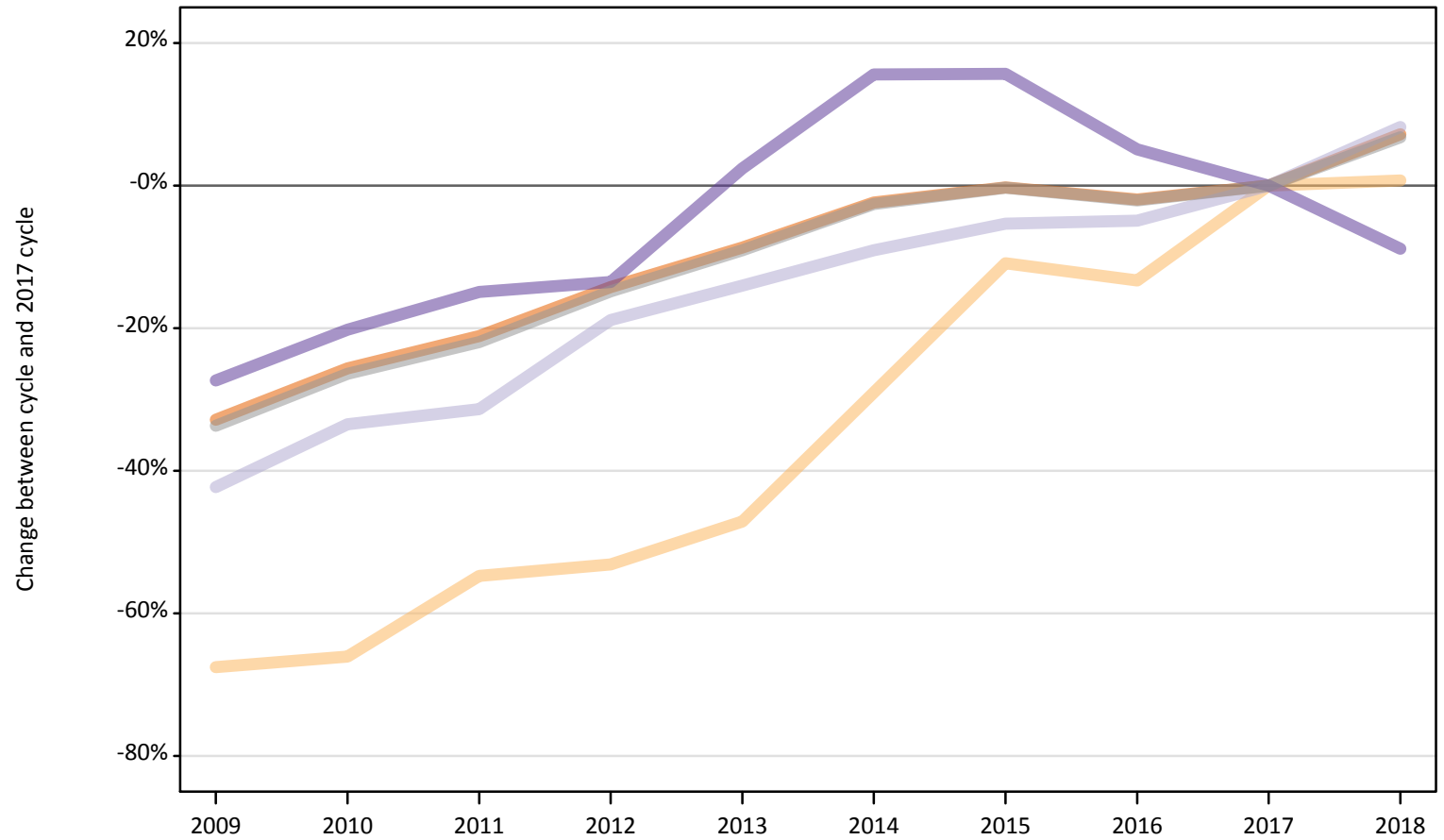
Difference between cycle and 2017 cycle

Domicile of applicant and country of provider		2009	2010	2011	2012	2013	2014	2015	2016	2017	2018
EU (excluding UK)	England	-26%	-9%	-1%	-20%	-17%	-10%	-0%	7%	0%	2%
	Northern Ireland	20%	59%	34%	20%	19%	24%	16%	8%	0%	5%
	Scotland	-48%	-28%	-18%	-4%	2%	1%	3%	5%	0%	-1%
	Wales	-36%	-28%	-29%	-40%	-34%	-26%	-18%	6%	0%	-8%
	UK	-31%	-13%	-5%	-17%	-13%	-8%	-0%	6%	0%	1%

Note: The percentage change is not recorded in the above table for groups with fewer than 10 applicants in that cycle or in the 2017 cycle.

I.5.22 Applications by domicile and country of provider : Not EU
Difference between cycle and 2017 cycle

- England
- Northern Ireland
- Scotland
- Wales
- UK



Note: The percentage change is not plotted in the above chart for groups with fewer than 500 applications in any one cycle.

I.5.23 Applications by domicile and country of provider : Not EU

Domicile of applicant and country of provider		2009	2010	2011	2012	2013	2014	2015	2016	2017	2018
Not EU	England	184,560	204,430	216,870	235,730	250,970	268,250	274,120	269,420	274,830	294,620
	Northern Ireland	730	760	1,020	1,050	1,190	1,590	2,000	1,950	2,240	2,260
	Scotland	14,160	16,320	16,840	19,910	21,080	22,300	23,210	23,310	24,520	26,530
	Wales	6,350	6,980	7,440	7,560	8,950	10,110	10,110	9,190	8,740	7,970
	UK	205,800	228,490	242,160	264,250	282,190	302,240	309,440	303,870	310,340	331,380

I.5.24 Applications by domicile and country of provider : Not EU

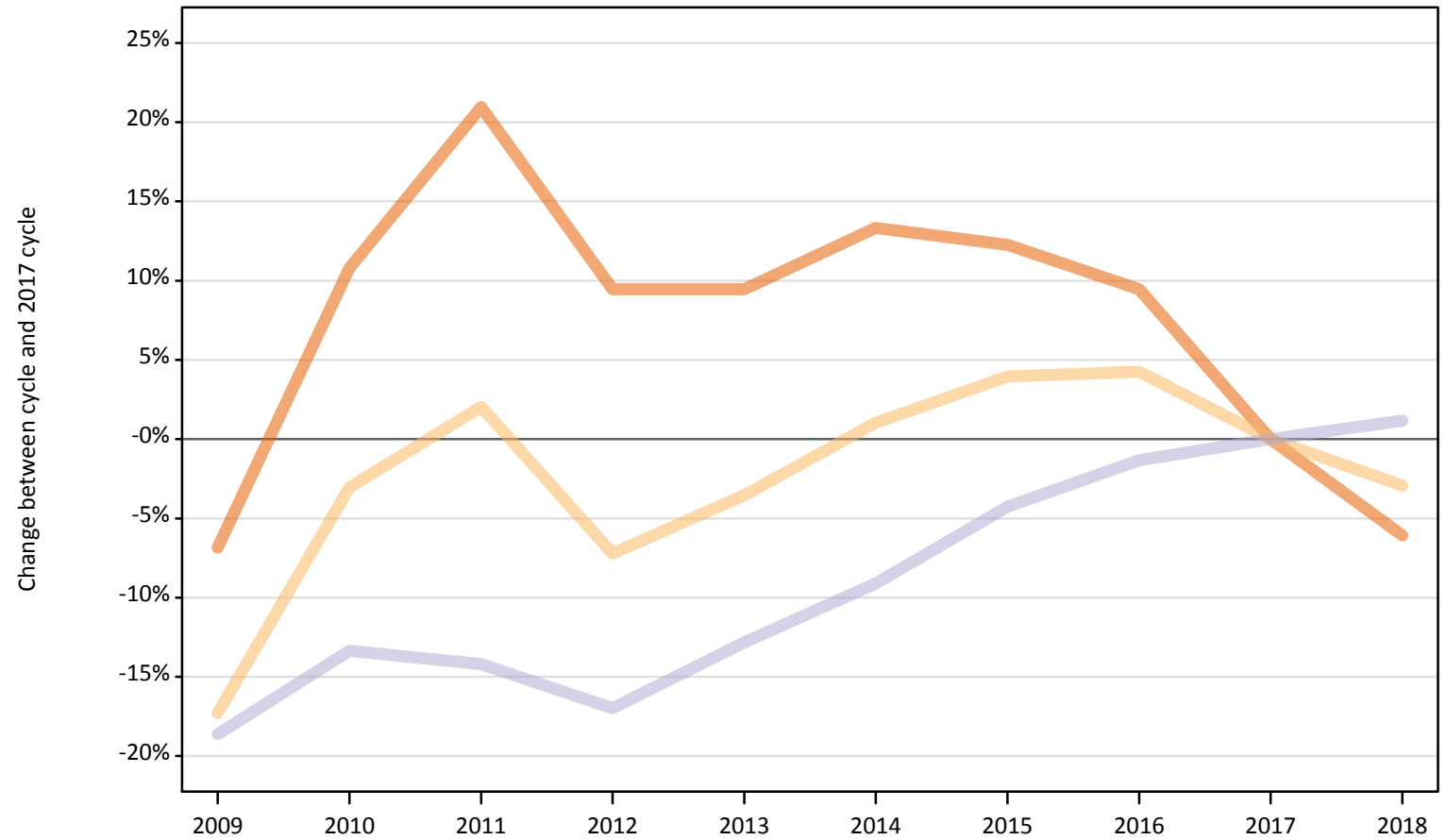
Difference between cycle and 2017 cycle

Domicile of applicant and country of provider		2009	2010	2011	2012	2013	2014	2015	2016	2017	2018
Not EU	England	-33%	-26%	-21%	-14%	-9%	-2%	-0%	-2%	0%	7%
	Northern Ireland	-68%	-66%	-55%	-53%	-47%	-29%	-11%	-13%	0%	1%
	Scotland	-42%	-33%	-31%	-19%	-14%	-9%	-5%	-5%	0%	8%
	Wales	-27%	-20%	-15%	-14%	2%	16%	16%	5%	0%	-9%
	UK	-34%	-26%	-22%	-15%	-9%	-3%	-0%	-2%	0%	7%

Note: The percentage change is not recorded in the above table for groups with fewer than 10 applicants in that cycle or in the 2017 cycle.

I.5.25 Applications by domicile and tariff group of provider : All domiciles
Difference between cycle and 2017 cycle

- 1. Lower tariff
- 2. Medium tariff
- 3. Higher tariff



Note: The percentage change is not plotted in the above chart for groups with fewer than 500 applications in any one cycle.

I.5.26 Applications by domicile and tariff group of provider : All domiciles

Domicile of applicant and tariff group of provider		2009	2010	2011	2012	2013	2014	2015	2016	2017	2018
All domiciles	1. Lower tariff	818,520	973,500	1,062,850	961,740	961,740	995,890	986,390	961,860	878,690	825,350
	2. Medium tariff	721,800	846,110	890,480	809,720	841,810	881,730	907,240	909,810	872,680	847,080
	3. Higher tariff	848,330	903,170	894,480	865,500	908,820	947,450	998,030	1,028,530	1,042,460	1,054,690
	All	2,388,660	2,722,780	2,847,810	2,636,960	2,712,360	2,825,070	2,891,650	2,900,210	2,793,830	2,727,120

I.5.27 Applications by domicile and tariff group of provider : All domiciles

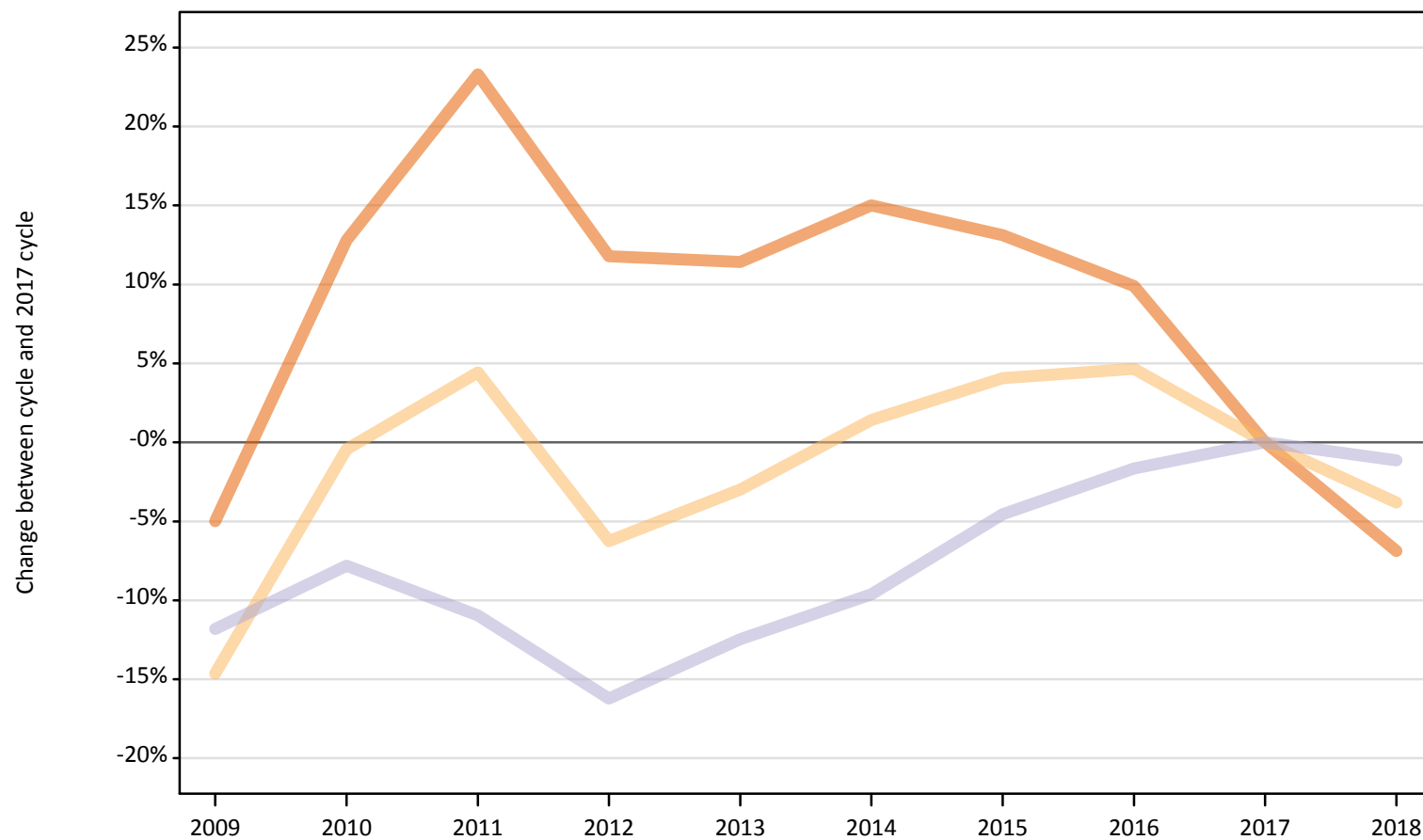
Difference between cycle and 2017 cycle

Domicile of applicant and tariff group of provider		2009	2010	2011	2012	2013	2014	2015	2016	2017	2018
All domiciles	1. Lower tariff	-7%	11%	21%	9%	9%	13%	12%	9%	0%	-6%
	2. Medium tariff	-17%	-3%	2%	-7%	-4%	1%	4%	4%	0%	-3%
	3. Higher tariff	-19%	-13%	-14%	-17%	-13%	-9%	-4%	-1%	0%	1%
	All	-15%	-3%	2%	-6%	-3%	1%	4%	4%	0%	-2%

Note: The percentage change is not recorded in the above table for groups with fewer than 10 applicants in that cycle or in the 2017 cycle.

I.5.28 Applications by domicile and tariff group of provider : UK
Difference between cycle and 2017 cycle

- 1. Lower tariff
- 2. Medium tariff
- 3. Higher tariff



Note: The percentage change is not plotted in the above chart for groups with fewer than 500 applications in any one cycle.

I.5.29 Applications by domicile and tariff group of provider : UK

Domicile of applicant and tariff group of provider		2009	2010	2011	2012	2013	2014	2015	2016	2017	2018
UK	1. Lower tariff	746,530	886,260	968,840	878,410	875,470	903,720	888,890	863,520	785,740	731,770
	2. Medium tariff	625,770	729,860	765,410	687,210	711,090	743,320	762,860	767,090	733,010	705,070
	3. Higher tariff	661,490	691,630	667,960	628,510	656,630	678,020	715,970	737,820	750,160	741,550
	All	2,033,790	2,307,750	2,402,210	2,194,130	2,243,190	2,325,050	2,367,720	2,368,420	2,268,910	2,178,390

I.5.30 Applications by domicile and tariff group of provider : UK

Difference between cycle and 2017 cycle

Domicile of applicant and tariff group of provider		2009	2010	2011	2012	2013	2014	2015	2016	2017	2018
UK	1. Lower tariff	-5%	13%	23%	12%	11%	15%	13%	10%	0%	-7%
	2. Medium tariff	-15%	-0%	4%	-6%	-3%	1%	4%	5%	0%	-4%
	3. Higher tariff	-12%	-8%	-11%	-16%	-12%	-10%	-5%	-2%	0%	-1%
	All	-10%	2%	6%	-3%	-1%	2%	4%	4%	0%	-4%

Note: The percentage change is not recorded in the above table for groups with fewer than 10 applicants in that cycle or in the 2017 cycle.

I.5.31 Applications by domicile and tariff group of provider : England
Difference between cycle and 2017 cycle

- 1. Lower tariff
- 2. Medium tariff
- 3. Higher tariff



Note: The percentage change is not plotted in the above chart for groups with fewer than 500 applications in any one cycle.

I.5.32 Applications by domicile and tariff group of provider : England

Domicile of applicant and tariff group of provider		2009	2010	2011	2012	2013	2014	2015	2016	2017	2018
England	1. Lower tariff	671,260	803,050	879,780	791,220	792,340	818,170	802,900	777,560	705,410	655,710
	2. Medium tariff	524,040	602,260	625,620	548,500	566,640	591,240	605,980	610,680	580,930	556,110
	3. Higher tariff	539,230	560,990	538,150	501,930	527,590	548,950	573,100	588,730	601,710	596,430
	All	1,734,540	1,966,290	2,043,550	1,841,650	1,886,570	1,958,350	1,981,970	1,976,970	1,888,050	1,808,260

I.5.33 Applications by domicile and tariff group of provider : England

Difference between cycle and 2017 cycle

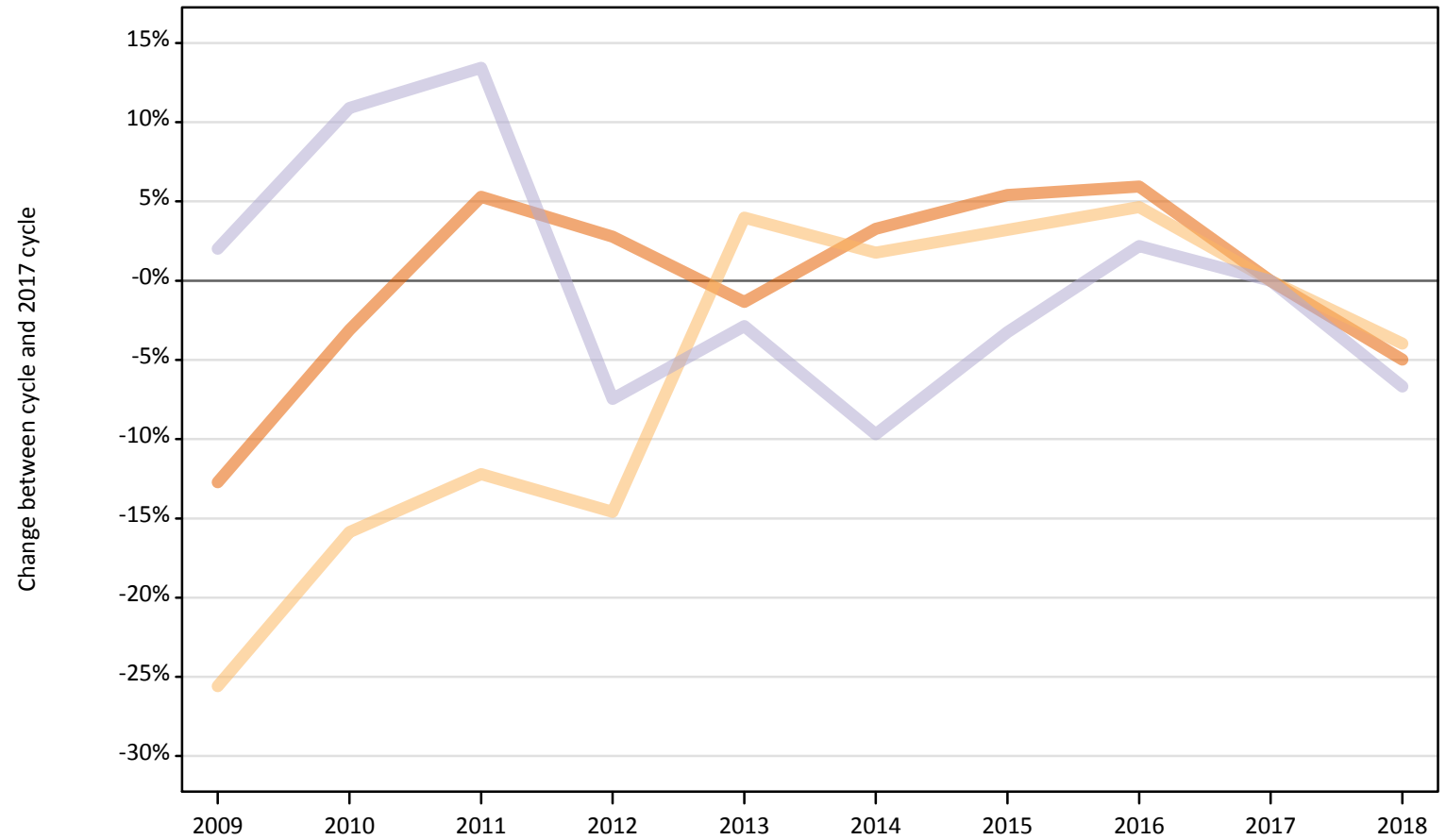
Domicile of applicant and tariff group of provider		2009	2010	2011	2012	2013	2014	2015	2016	2017	2018
England	1. Lower tariff	-5%	14%	25%	12%	12%	16%	14%	10%	0%	-7%
	2. Medium tariff	-10%	4%	8%	-6%	-2%	2%	4%	5%	0%	-4%
	3. Higher tariff	-10%	-7%	-11%	-17%	-12%	-9%	-5%	-2%	0%	-1%
	All	-8%	4%	8%	-2%	-0%	4%	5%	5%	0%	-4%

Note: The percentage change is not recorded in the above table for groups with fewer than 10 applicants in that cycle or in the 2017 cycle.

I.5.34 Applications by domicile and tariff group of provider : Northern Ireland

Difference between cycle and 2017 cycle

- 1. Lower tariff
- 2. Medium tariff
- 3. Higher tariff



Note: The percentage change is not plotted in the above chart for groups with fewer than 500 applications in any one cycle.

I.5.35 Applications by domicile and tariff group of provider : Northern Ireland

Domicile of applicant and tariff group of provider		2009	2010	2011	2012	2013	2014	2015	2016	2017	2018
Northern Ireland	1. Lower tariff	37,430	41,550	45,160	44,080	42,320	44,290	45,210	45,440	42,890	40,750
	2. Medium tariff	24,960	28,220	29,440	28,650	34,870	34,130	34,620	35,090	33,540	32,200
	3. Higher tariff	14,650	15,920	16,290	13,290	13,950	12,970	13,890	14,670	14,360	13,400
	All	77,040	85,690	90,890	86,010	91,130	91,390	93,720	95,200	90,790	86,350

I.5.36 Applications by domicile and tariff group of provider : Northern Ireland

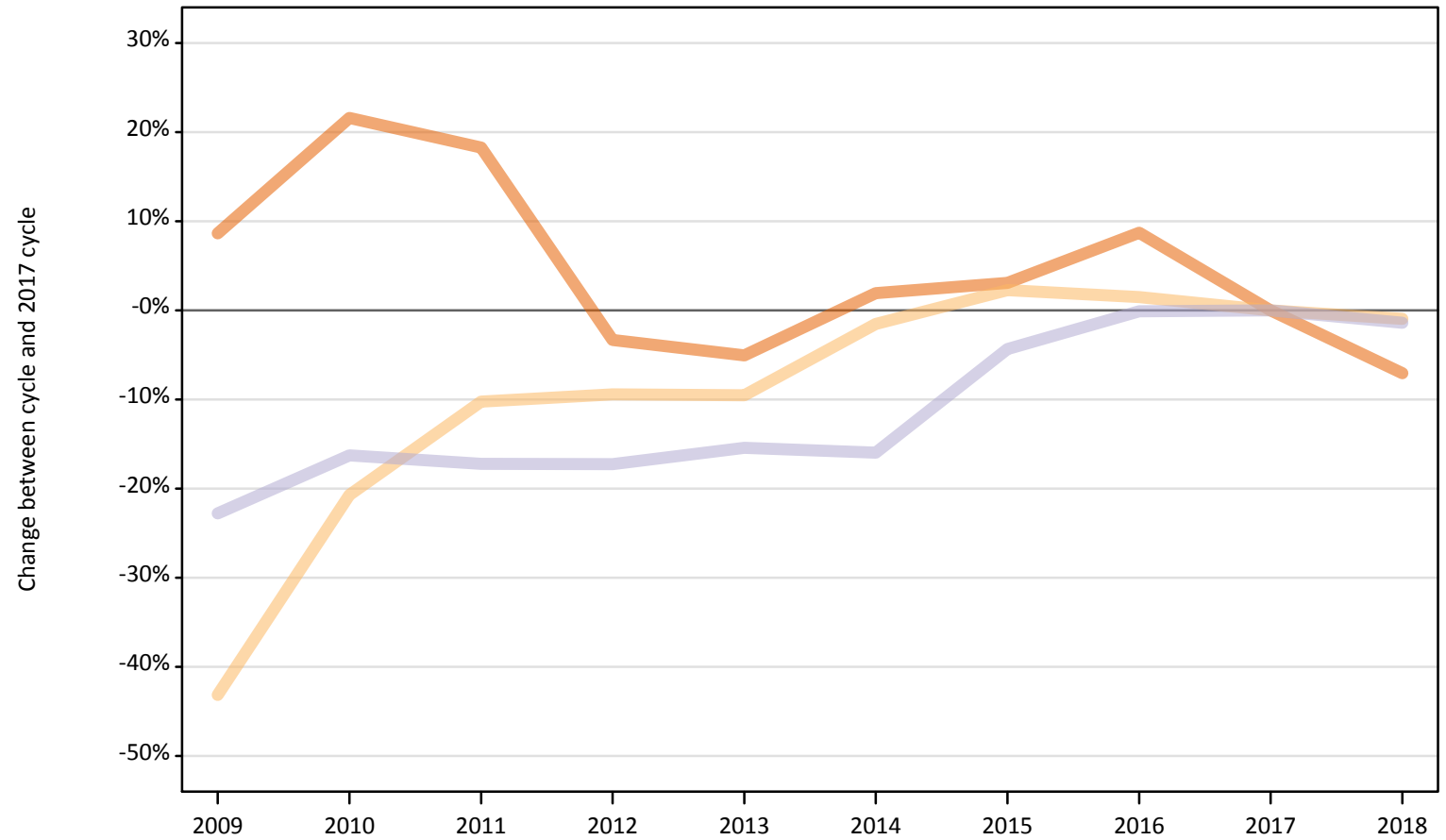
Difference between cycle and 2017 cycle

Domicile of applicant and tariff group of provider		2009	2010	2011	2012	2013	2014	2015	2016	2017	2018
Northern Ireland	1. Lower tariff	-13%	-3%	5%	3%	-1%	3%	5%	6%	0%	-5%
	2. Medium tariff	-26%	-16%	-12%	-15%	4%	2%	3%	5%	0%	-4%
	3. Higher tariff	2%	11%	13%	-7%	-3%	-10%	-3%	2%	0%	-7%
	All	-15%	-6%	0%	-5%	0%	1%	3%	5%	0%	-5%

Note: The percentage change is not recorded in the above table for groups with fewer than 10 applicants in that cycle or in the 2017 cycle.

I.5.37 Applications by domicile and tariff group of provider : Scotland
Difference between cycle and 2017 cycle

- 1. Lower tariff
- 2. Medium tariff
- 3. Higher tariff



Note: The percentage change is not plotted in the above chart for groups with fewer than 500 applications in any one cycle.

I.5.38 Applications by domicile and tariff group of provider : Scotland

Domicile of applicant and tariff group of provider		2009	2010	2011	2012	2013	2014	2015	2016	2017	2018
Scotland	1. Lower tariff	3,050	3,410	3,320	2,710	2,660	2,860	2,890	3,050	2,800	2,610
	2. Medium tariff	50,970	71,080	80,470	81,200	81,120	88,280	91,700	90,980	89,660	88,820
	3. Higher tariff	82,120	89,040	88,000	87,980	89,920	89,350	101,690	106,220	106,320	104,820
	All	136,140	163,530	171,790	171,890	173,690	180,490	196,280	200,260	198,780	196,250

I.5.39 Applications by domicile and tariff group of provider : Scotland

Difference between cycle and 2017 cycle

Domicile of applicant and tariff group of provider		2009	2010	2011	2012	2013	2014	2015	2016	2017	2018
Scotland	1. Lower tariff	9%	22%	18%	-3%	-5%	2%	3%	9%	0%	-7%
	2. Medium tariff	-43%	-21%	-10%	-9%	-10%	-2%	2%	1%	0%	-1%
	3. Higher tariff	-23%	-16%	-17%	-17%	-15%	-16%	-4%	-0%	0%	-1%
	All	-32%	-18%	-14%	-14%	-13%	-9%	-1%	1%	0%	-1%

Note: The percentage change is not recorded in the above table for groups with fewer than 10 applicants in that cycle or in the 2017 cycle.

I.5.40 Applications by domicile and tariff group of provider : Wales
Difference between cycle and 2017 cycle

- 1. Lower tariff
- 2. Medium tariff
- 3. Higher tariff



Note: The percentage change is not plotted in the above chart for groups with fewer than 500 applications in any one cycle.

I.5.41 Applications by domicile and tariff group of provider : Wales

Domicile of applicant and tariff group of provider		2009	2010	2011	2012	2013	2014	2015	2016	2017	2018
Wales	1. Lower tariff	34,790	38,250	40,590	40,400	38,150	38,400	37,890	37,480	34,650	32,700
	2. Medium tariff	25,800	28,310	29,880	28,860	28,470	29,670	30,560	30,330	28,880	27,940
	3. Higher tariff	25,490	25,690	25,510	25,310	25,180	26,750	27,290	28,200	27,770	26,890
	All	86,080	92,240	95,990	94,580	91,790	94,830	95,750	96,000	91,300	87,530

I.5.42 Applications by domicile and tariff group of provider : Wales

Difference between cycle and 2017 cycle

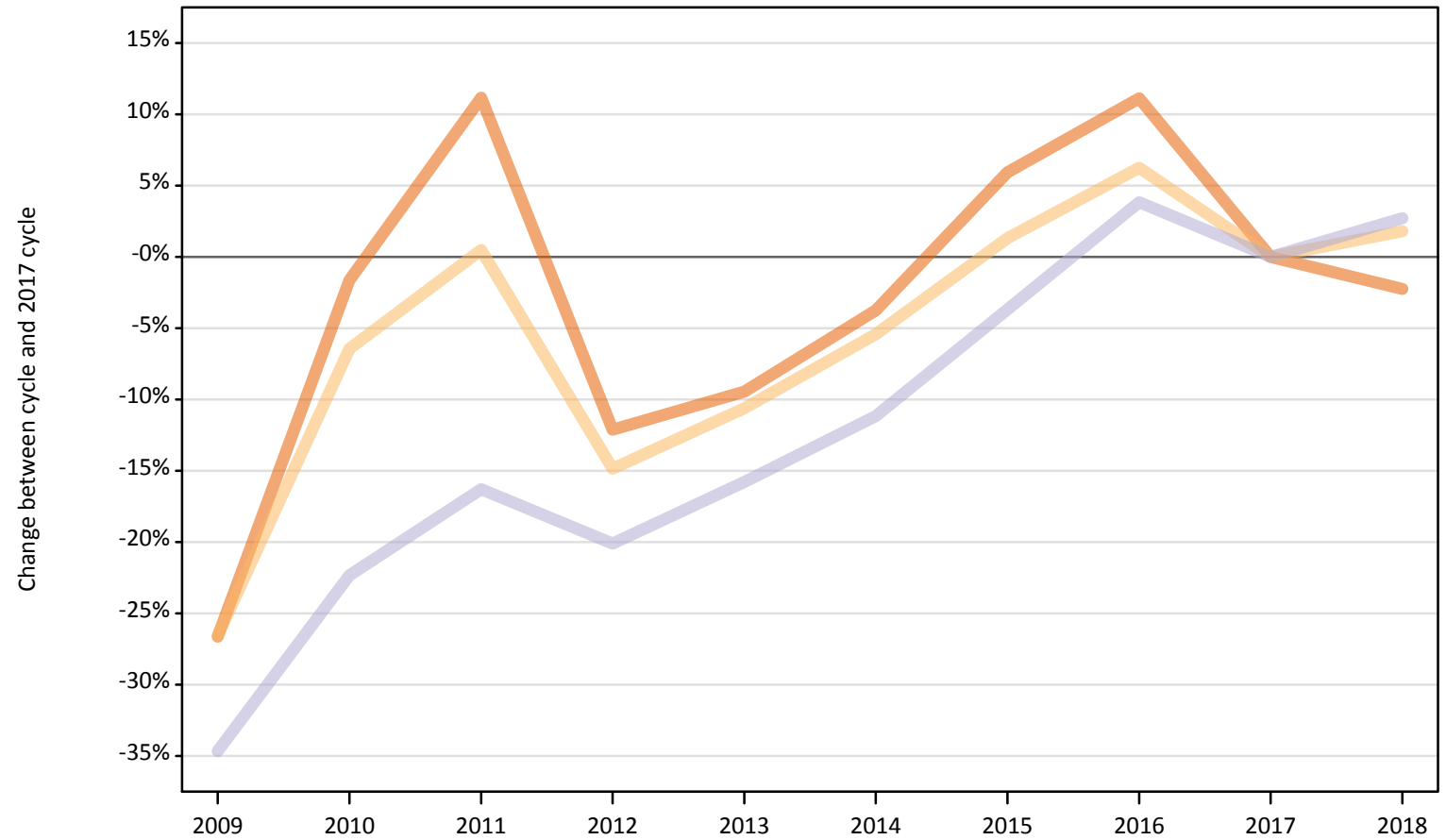
Domicile of applicant and tariff group of provider		2009	2010	2011	2012	2013	2014	2015	2016	2017	2018
Wales	1. Lower tariff	0%	10%	17%	17%	10%	11%	9%	8%	0%	-6%
	2. Medium tariff	-11%	-2%	3%	-0%	-1%	3%	6%	5%	0%	-3%
	3. Higher tariff	-8%	-8%	-8%	-9%	-9%	-4%	-2%	2%	0%	-3%
	All	-6%	1%	5%	4%	1%	4%	5%	5%	0%	-4%

Note: The percentage change is not recorded in the above table for groups with fewer than 10 applicants in that cycle or in the 2017 cycle.

I.5.43 Applications by domicile and tariff group of provider : EU (excluding UK)

Difference between cycle and 2017 cycle

- 1. Lower tariff
- 2. Medium tariff
- 3. Higher tariff



Note: The percentage change is not plotted in the above chart for groups with fewer than 500 applications in any one cycle.

I.5.44 Applications by domicile and tariff group of provider : EU (excluding UK)

Domicile of applicant and tariff group of provider		2009	2010	2011	2012	2013	2014	2015	2016	2017	2018
EU (excluding UK)	1. Lower tariff	37,100	49,740	56,200	44,440	45,790	48,660	53,550	56,180	50,560	49,420
	2. Medium tariff	43,390	55,290	59,380	50,310	52,820	55,880	59,860	62,780	59,090	60,160
	3. Higher tariff	68,580	81,520	87,850	83,830	88,370	93,230	101,070	108,960	104,940	107,780
	All	149,070	186,540	203,430	178,580	186,980	197,770	214,490	227,920	214,580	217,350

I.5.45 Applications by domicile and tariff group of provider : EU (excluding UK)

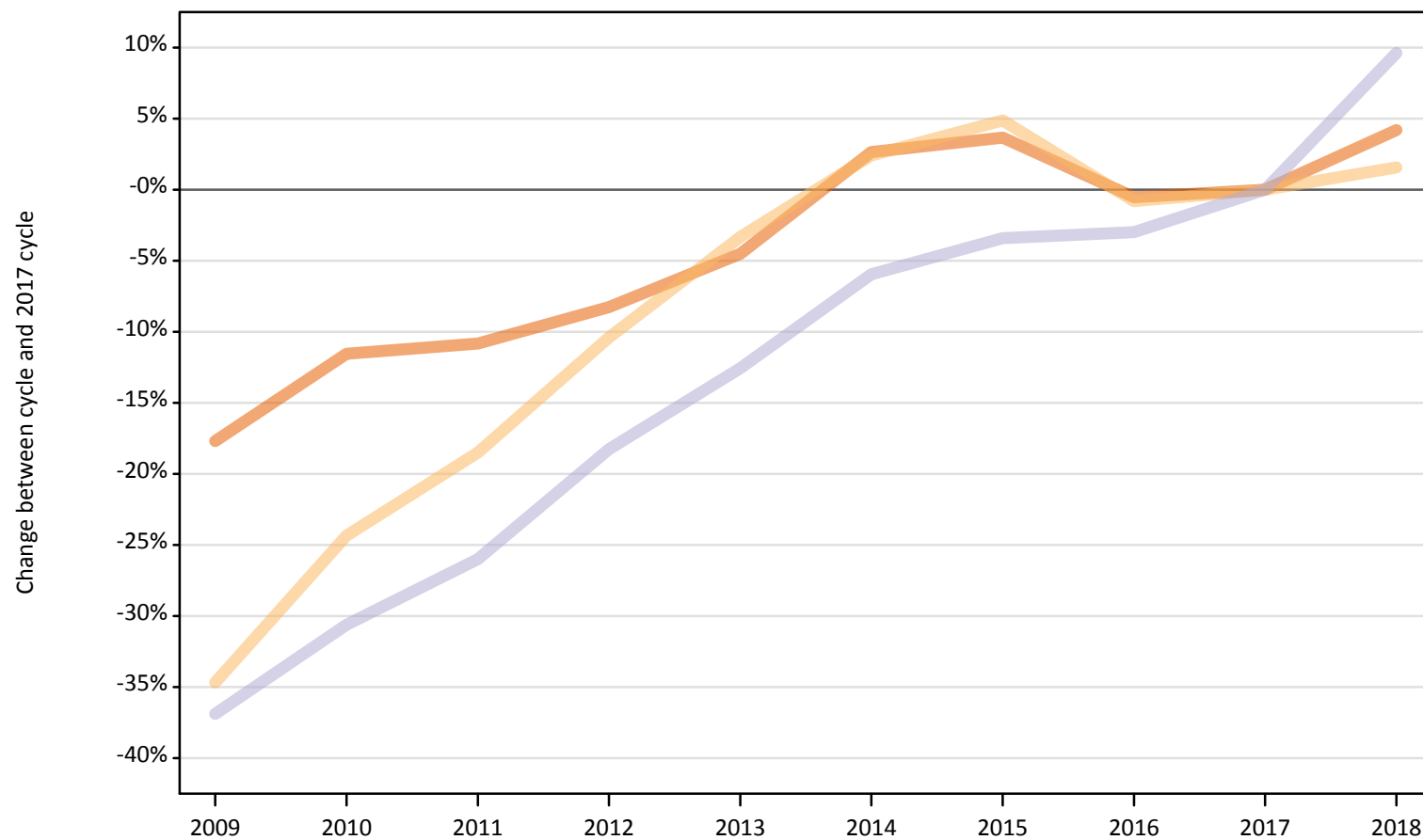
Difference between cycle and 2017 cycle

Domicile of applicant and tariff group of provider		2009	2010	2011	2012	2013	2014	2015	2016	2017	2018
EU (excluding UK)	1. Lower tariff	-27%	-2%	11%	-12%	-9%	-4%	6%	11%	0%	-2%
	2. Medium tariff	-27%	-6%	0%	-15%	-11%	-5%	1%	6%	0%	2%
	3. Higher tariff	-35%	-22%	-16%	-20%	-16%	-11%	-4%	4%	0%	3%
	All	-31%	-13%	-5%	-17%	-13%	-8%	-0%	6%	0%	1%

Note: The percentage change is not recorded in the above table for groups with fewer than 10 applicants in that cycle or in the 2017 cycle.

I.5.46 Applications by domicile and tariff group of provider : Not EU
Difference between cycle and 2017 cycle

- 1. Lower tariff
- 2. Medium tariff
- 3. Higher tariff



Note: The percentage change is not plotted in the above chart for groups with fewer than 500 applications in any one cycle.

I.5.47 Applications by domicile and tariff group of provider : Not EU

Domicile of applicant and tariff group of provider		2009	2010	2011	2012	2013	2014	2015	2016	2017	2018
Not EU	1. Lower tariff	34,890	37,500	37,800	38,890	40,480	43,510	43,940	42,170	42,390	44,170
	2. Medium tariff	52,640	60,970	65,690	72,200	77,900	82,530	84,510	79,940	80,590	81,850
	3. Higher tariff	118,260	130,020	138,670	153,160	163,810	176,200	180,990	181,760	187,360	205,370
	All	205,800	228,490	242,160	264,250	282,190	302,240	309,440	303,870	310,340	331,380

I.5.48 Applications by domicile and tariff group of provider : Not EU

Difference between cycle and 2017 cycle

Domicile of applicant and tariff group of provider		2009	2010	2011	2012	2013	2014	2015	2016	2017	2018
Not EU	1. Lower tariff	-18%	-12%	-11%	-8%	-5%	3%	4%	-1%	0%	4%
	2. Medium tariff	-35%	-24%	-18%	-10%	-3%	2%	5%	-1%	0%	2%
	3. Higher tariff	-37%	-31%	-26%	-18%	-13%	-6%	-3%	-3%	0%	10%
	All	-34%	-26%	-22%	-15%	-9%	-3%	-0%	-2%	0%	7%

Note: The percentage change is not recorded in the above table for groups with fewer than 10 applicants in that cycle or in the 2017 cycle.

I.5.49 Technical notes and definitions

Applicants have been able to submit applications for all 2018 courses since early September.

Applicants who submit their applications to UCAS by the January deadline are considered 'on time' applicants for the large majority of courses offered through UCAS. Some art and design courses have a later deadline of 24 March. By definition all main scheme applications have been received by the 30 June deadline.

Counts of the number of applicants reported have been rounded to the nearest 10 applicants, this may result in instances where totals do not equal the sum of the components. Proportional changes have been rounded to the nearest whole percentage point.

In 2009, the Canary Islands classification changed from Not EU to EU (excluding UK). In order to present an accurate time series, the Canary Islands have been consistently classified as EU (excluding UK). This will result in differences with data published prior to 2010.

Age

This statistical release uses country-specific age definitions which align with the cut off points for school/college cohorts within the different administrations of the UK. For England and Wales ages are defined on the 31 August, for Northern Ireland on the 1 July and for Scotland on the 28 February the following year. Defining ages in this way matches the assignment of children to school cohorts. For applicants outside of the UK the cohort cut off for England and Wales has been used.

Applicant

A person who has made an application in the UCAS system during the cycle reported (including applications for deferred entry). Records of prior acceptance (RPAs) are excluded.

Application

An application to a course at a provider made by an applicant in the UCAS main scheme. Applicants may make up to five main scheme applications.

Country of provider

An applicant may be counted once for each provider country they have applied to in the main scheme. If an applicant has applied to providers in multiple countries then the applicant is counted once within each country of provider applied to.

Domicile

Declared area of permanent residence. The Channel Islands and the Isle of Man have been assigned as 'Not EU'.

Ethnic group

High level grouping of ethnic origin as declared by the applicant: 'Asian', 'Black', 'Mixed', 'White', 'Other', 'Unknown'.

First time applicant

An applicant that did not apply to the UCAS scheme in the previous cycle.

Main scheme

The main UCAS application scheme through which up to five providers/courses can be applied to. This opens in September and closes to new applications on 30 June the following year.

Reapplicant

An applicant that applied to the UCAS scheme in the previous cycle.

Sex

As declared by the applicant.

SIMD 2016

Scottish Index of Multiple Deprivation identifies small area concentrations of multiple deprivation across all of Scotland, providing a relative measure of deprivation among small areas (data zones). In this report, the SIMD 2016 has been used to group areas in each year in the times series.

POLAR3

Developed by HEFCE and classifies small areas across the UK into five groups, according to their level of young participation in HE. Each of these groups represents around 20 per cent of young people, and is ranked from quintile 1 (areas with the lowest young participation rates, considered as the most disadvantaged) to quintile 5 (highest young participation rates, considered most advantaged).

POLAR4

Developed by HEFCE and classifies small areas across the UK into five groups, according to their level of young participation in HE. Each of these groups represents around 20 per cent of young people, and is ranked from quintile 1 (areas with the lowest young participation rates, considered as the most disadvantaged) to quintile 5 (highest young participation rates, considered most advantaged). POLAR4 is the most recent version of the POLAR classification, and is available for the first time in UCAS? reporting since its launch in 2017.

Tariff Group of provider

Providers are grouped as higher, medium or lower tariff based on their average levels of attainment of their accepted applicants (summarised through UCAS Tariff points) in recent cycles. Each group of providers accounted for around a third of all UK 18 year old acceptances in recent cycles.

Subject group

The JACS3 classification used to classify courses into subject groups.