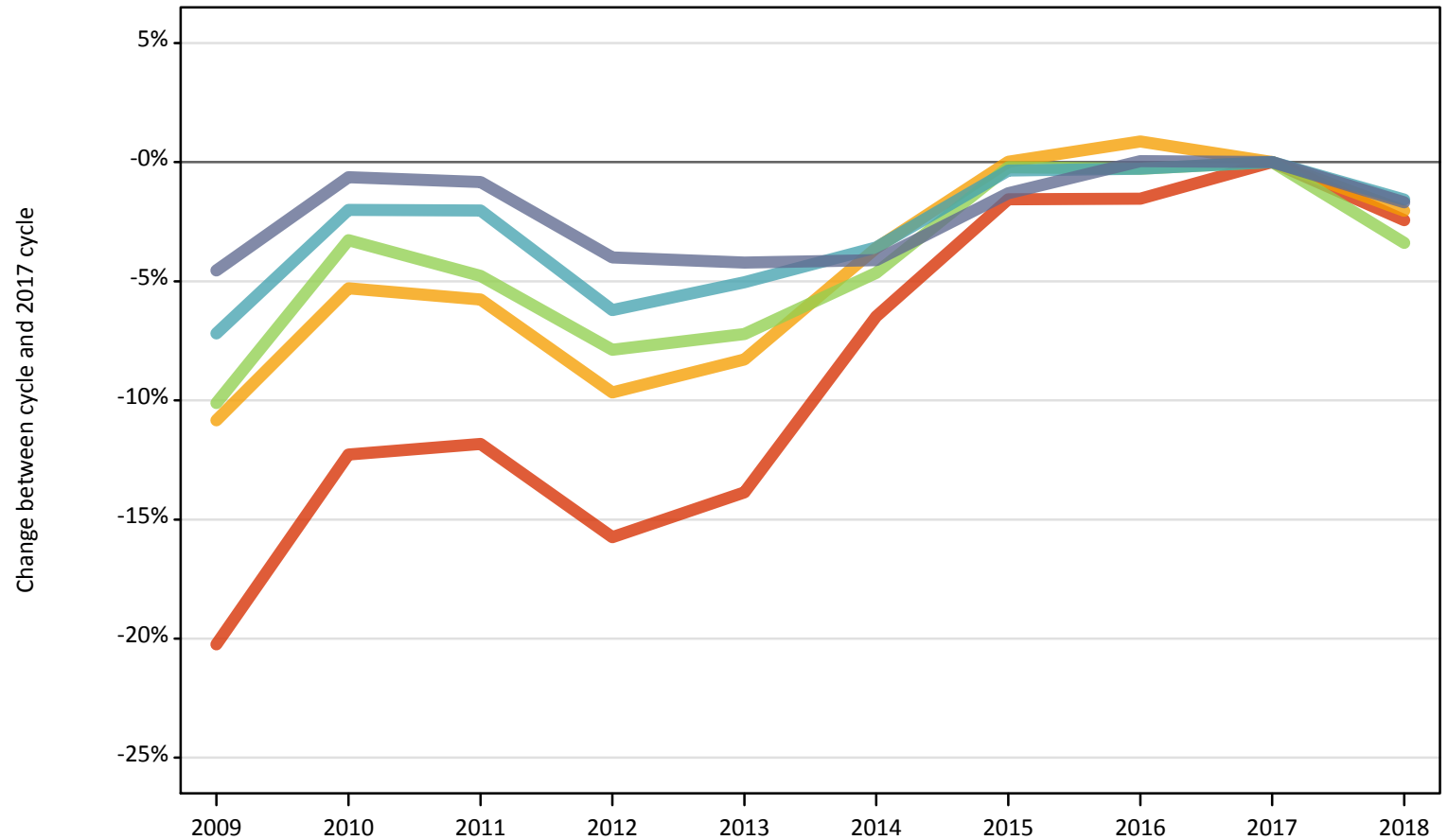


# June Deadline Analysis: POLAR4 quintile

## 18 year old applicants by POLAR4 quintile and sex at the 30 June deadline

### I.12.1 18 year old applicants by POLAR4 quintile: UK Difference between cycle and 2017 cycle

- Quintile 1
- Quintile 2
- Quintile 3
- Quintile 4
- Quintile 5



Note: The percentage change is not plotted in the above chart for groups with fewer than 500 applicants in any one cycle.

### I.12.2 18 year old applicants by POLAR4 quintile: UK

POLAR4 quintile of applicant		2009	2010	2011	2012	2013	2014	2015	2016	2017	2018
UK	Quintile 1	23,950	26,350	26,480	25,310	25,870	28,090	29,560	29,570	30,030	29,300
	Quintile 2	37,000	39,300	39,100	37,490	38,060	40,000	41,500	41,860	41,500	40,650
	Quintile 3	46,750	50,310	49,530	47,920	48,260	49,600	51,900	51,870	52,010	50,250
	Quintile 4	58,700	61,980	61,960	59,320	60,050	60,980	63,020	63,070	63,250	62,250
	Quintile 5	86,400	89,940	89,750	86,890	86,700	86,790	89,330	90,550	90,510	88,980

### I.12.3 18 year old applicants by POLAR4 quintile: UK

Difference between cycle and 2017 cycle

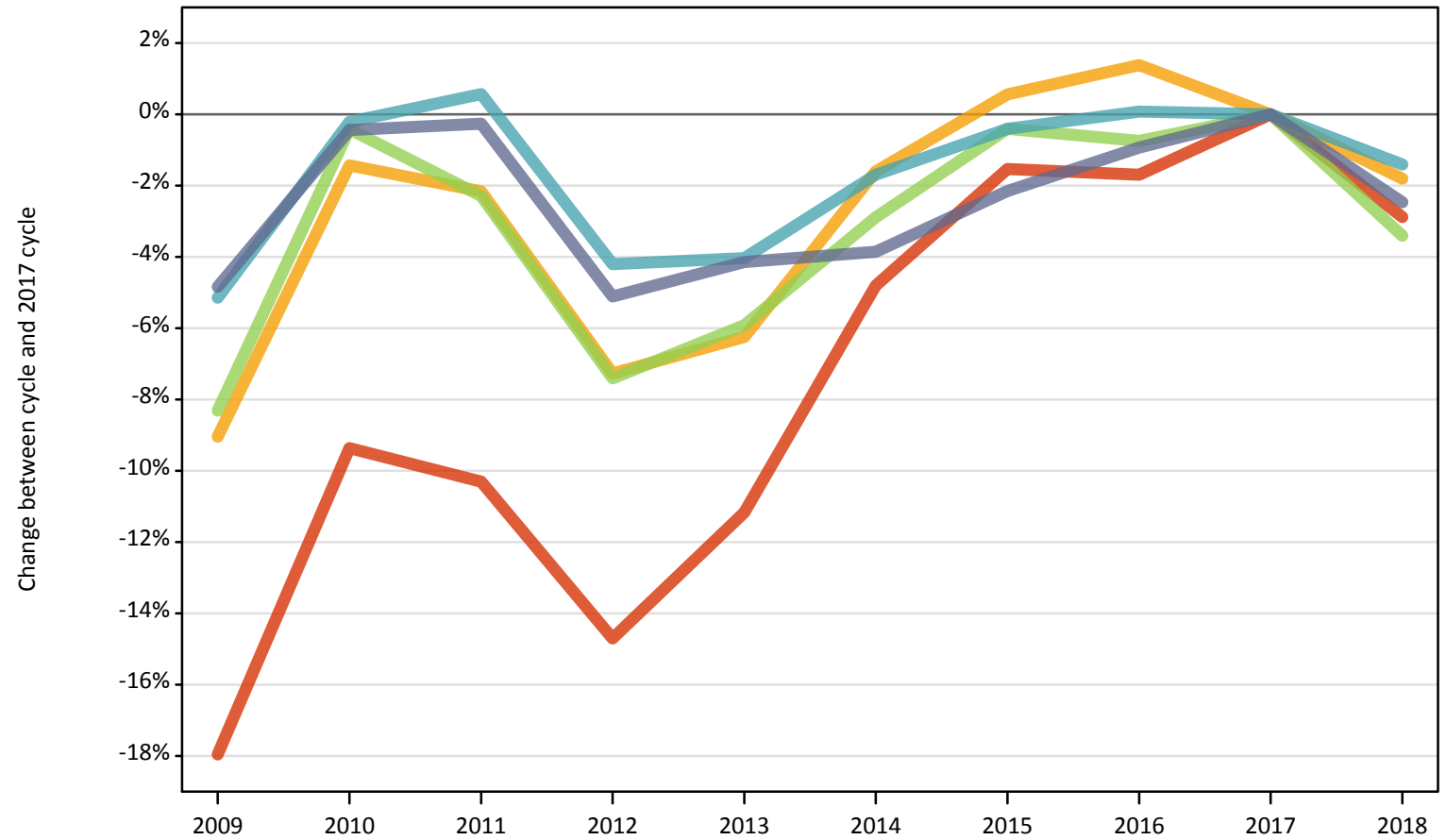
POLAR4 quintile of applicant		2009	2010	2011	2012	2013	2014	2015	2016	2017	2018
UK	Quintile 1	-20%	-12%	-12%	-16%	-14%	-6%	-2%	-2%	0%	-2%
	Quintile 2	-11%	-5%	-6%	-10%	-8%	-4%	0%	1%	0%	-2%
	Quintile 3	-10%	-3%	-5%	-8%	-7%	-5%	-0%	-0%	0%	-3%
	Quintile 4	-7%	-2%	-2%	-6%	-5%	-4%	-0%	-0%	0%	-2%
	Quintile 5	-5%	-1%	-1%	-4%	-4%	-4%	-1%	0%	0%	-2%

Note: The percentage change is not recorded in the above table for groups with fewer than 10 applicants in that cycle or in the 2017 cycle.

### I.12.4 18 year old applicants by POLAR4 quintile: UK (Men)

Difference between cycle and 2017 cycle

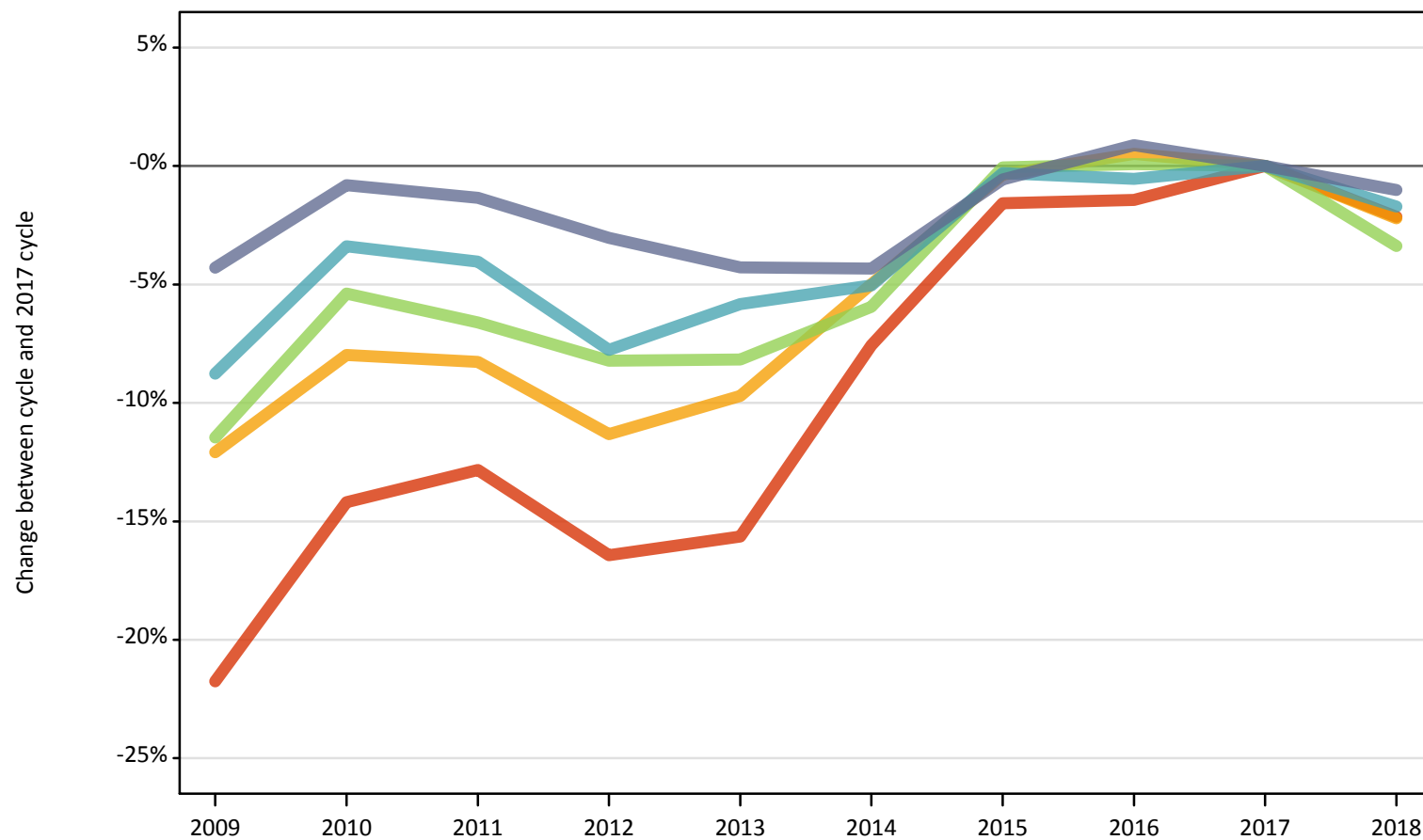
- Quintile 1
- Quintile 2
- Quintile 3
- Quintile 4
- Quintile 5



Note: The percentage change is not plotted in the above chart for groups with fewer than 500 applicants in any one cycle.

**I.12.5 18 year old applicants by POLAR4 quintile: UK (Women)**  
Difference between cycle and 2017 cycle

- Quintile 1
- Quintile 2
- Quintile 3
- Quintile 4
- Quintile 5



Note: The percentage change is not plotted in the above chart for groups with fewer than 500 applicants in any one cycle.

### I.12.6 18 year old applicants by sex and POLAR4 quintile: UK

Sex and POLAR4 quintile of applicant		2009	2010	2011	2012	2013	2014	2015	2016	2017	2018
Women	Quintile 1	14,170	15,540	15,780	15,130	15,270	16,740	17,820	17,850	18,110	17,720
	Quintile 2	21,560	22,560	22,490	21,740	22,140	23,290	24,430	24,640	24,520	23,970
	Quintile 3	26,490	28,310	27,940	27,460	27,480	28,140	29,900	29,940	29,920	28,910
	Quintile 4	32,540	34,450	34,220	32,890	33,580	33,860	35,550	35,470	35,660	35,050
	Quintile 5	46,190	47,870	47,610	46,790	46,190	46,170	47,980	48,680	48,260	47,770
Men	Quintile 1	9,790	10,810	10,700	10,170	10,590	11,350	11,740	11,720	11,930	11,580
	Quintile 2	15,450	16,740	16,610	15,750	15,920	16,710	17,080	17,220	16,980	16,670
	Quintile 3	20,260	22,000	21,590	20,460	20,790	21,460	22,000	21,930	22,090	21,340
	Quintile 4	26,160	27,530	27,740	26,420	26,470	27,120	27,470	27,610	27,580	27,200
	Quintile 5	40,210	42,070	42,150	40,100	40,510	40,630	41,350	41,870	42,260	41,220

### I.12.7 18 year old applicants by sex and POLAR4 quintile: UK

Difference between cycle and 2017 cycle

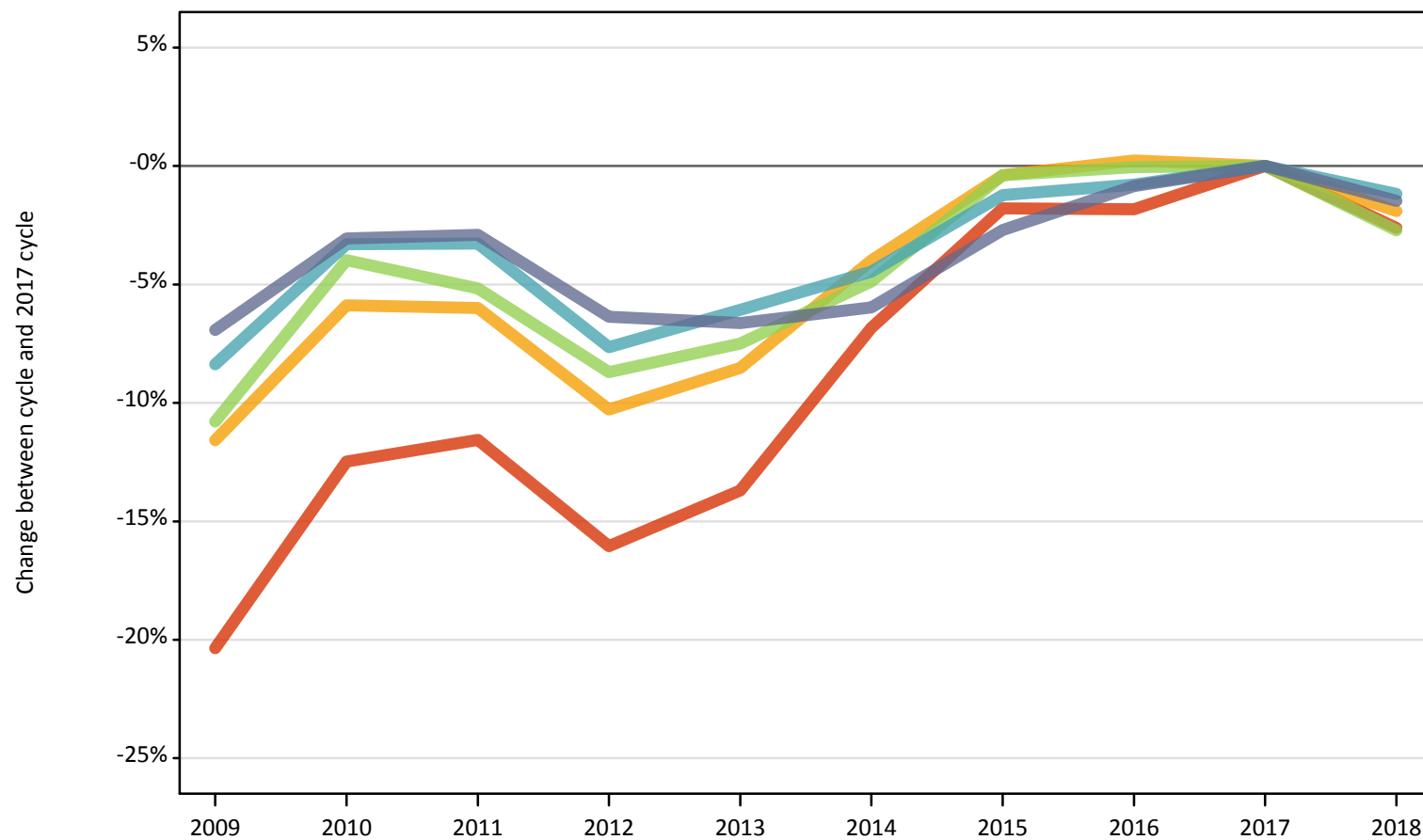
Sex and POLAR4 quintile of applicant		2009	2010	2011	2012	2013	2014	2015	2016	2017	2018
Women	Quintile 1	-22%	-14%	-13%	-16%	-16%	-8%	-2%	-1%	0%	-2%
	Quintile 2	-12%	-8%	-8%	-11%	-10%	-5%	-0%	1%	0%	-2%
	Quintile 3	-11%	-5%	-7%	-8%	-8%	-6%	-0%	0%	0%	-3%
	Quintile 4	-9%	-3%	-4%	-8%	-6%	-5%	-0%	-1%	0%	-2%
	Quintile 5	-4%	-1%	-1%	-3%	-4%	-4%	-1%	1%	0%	-1%
Men	Quintile 1	-18%	-9%	-10%	-15%	-11%	-5%	-2%	-2%	0%	-3%
	Quintile 2	-9%	-1%	-2%	-7%	-6%	-2%	1%	1%	0%	-2%
	Quintile 3	-8%	-0%	-2%	-7%	-6%	-3%	-0%	-1%	0%	-3%
	Quintile 4	-5%	-0%	1%	-4%	-4%	-2%	-0%	0%	0%	-1%
	Quintile 5	-5%	-0%	-0%	-5%	-4%	-4%	-2%	-1%	0%	-2%

Note: The percentage change is not recorded in the above table for groups with fewer than 10 applicants in that cycle or in the 2017 cycle.

### I.12.8 18 year old applicants by POLAR4 quintile: England

Difference between cycle and 2017 cycle

- Quintile 1
- Quintile 2
- Quintile 3
- Quintile 4
- Quintile 5



Note: The percentage change is not plotted in the above chart for groups with fewer than 500 applicants in any one cycle.

### I.12.9 18 year old applicants by POLAR4 quintile: England

POLAR4 quintile of applicant		2009	2010	2011	2012	2013	2014	2015	2016	2017	2018
England	Quintile 1	20,940	23,010	23,260	22,080	22,690	24,500	25,830	25,810	26,300	25,610
	Quintile 2	31,770	33,820	33,770	32,240	32,860	34,500	35,790	36,010	35,930	35,240
	Quintile 3	39,320	42,320	41,790	40,240	40,770	41,920	43,900	44,050	44,070	42,880
	Quintile 4	49,210	51,930	51,950	49,610	50,450	51,320	53,050	53,290	53,710	53,080
	Quintile 5	70,190	73,110	73,220	70,620	70,410	70,910	73,370	74,770	75,410	74,310

### I.12.10 18 year old applicants by POLAR4 quintile: England

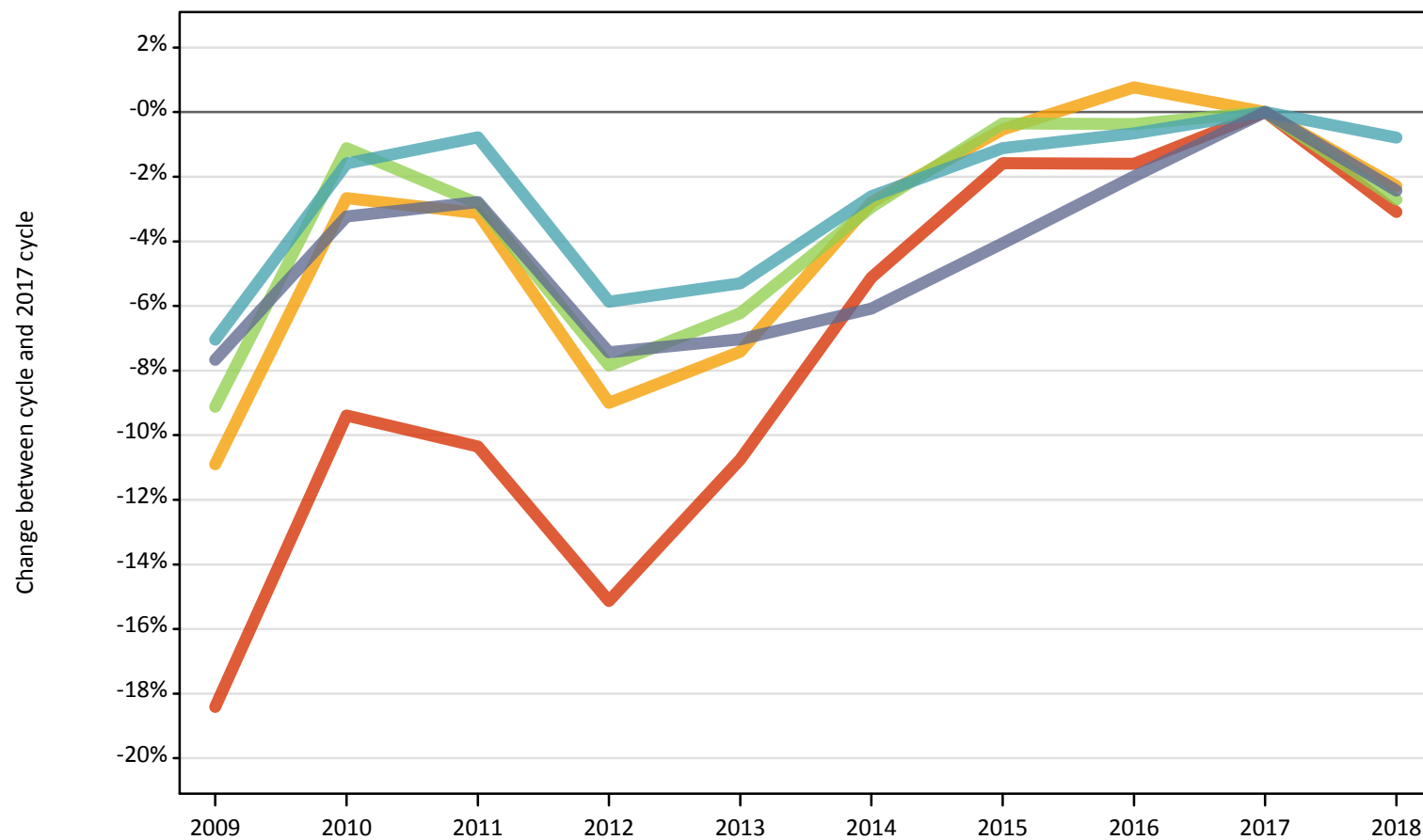
Difference between cycle and 2017 cycle

POLAR4 quintile of applicant		2009	2010	2011	2012	2013	2014	2015	2016	2017	2018
England	Quintile 1	-20%	-12%	-12%	-16%	-14%	-7%	-2%	-2%	0%	-3%
	Quintile 2	-12%	-6%	-6%	-10%	-9%	-4%	-0%	0%	0%	-2%
	Quintile 3	-11%	-4%	-5%	-9%	-7%	-5%	-0%	-0%	0%	-3%
	Quintile 4	-8%	-3%	-3%	-8%	-6%	-4%	-1%	-1%	0%	-1%
	Quintile 5	-7%	-3%	-3%	-6%	-7%	-6%	-3%	-1%	0%	-1%

Note: The percentage change is not recorded in the above table for groups with fewer than 10 applicants in that cycle or in the 2017 cycle.

**I.12.11 18 year old applicants by POLAR4 quintile: England (Men)**  
Difference between cycle and 2017 cycle

- Quintile 1
- Quintile 2
- Quintile 3
- Quintile 4
- Quintile 5

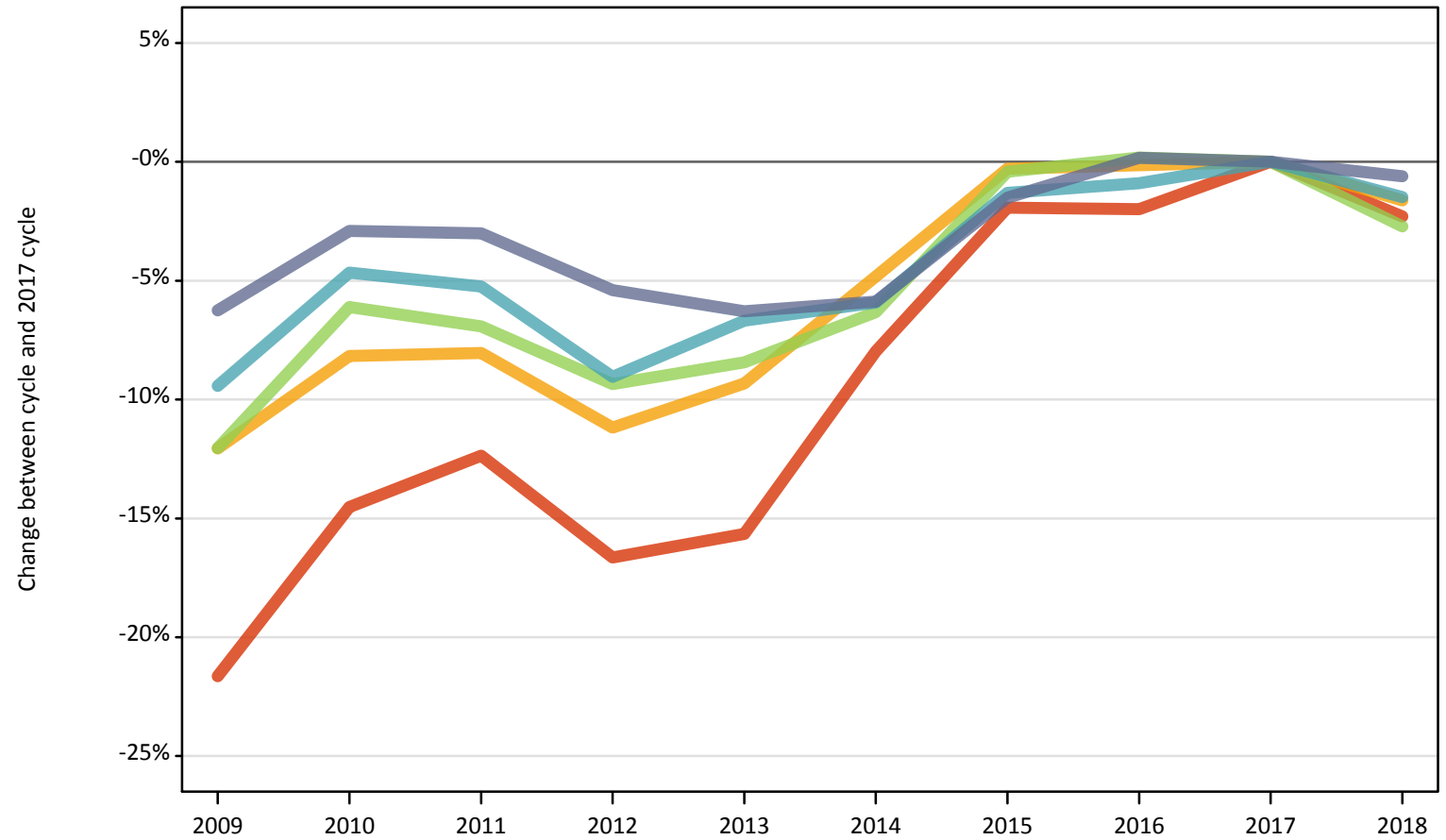


Note: The percentage change is not plotted in the above chart for groups with fewer than 500 applicants in any one cycle.



**I.12.12 18 year old applicants by POLAR4 quintile: England (Women)**  
Difference between cycle and 2017 cycle

- Quintile 1
- Quintile 2
- Quintile 3
- Quintile 4
- Quintile 5



Note: The percentage change is not plotted in the above chart for groups with fewer than 500 applicants in any one cycle.

### I.12.13 18 year old applicants by sex and POLAR4 quintile: England

Sex and POLAR4 quintile of applicant		2009	2010	2011	2012	2013	2014	2015	2016	2017	2018
Women	Quintile 1	12,400	13,530	13,870	13,190	13,350	14,570	15,520	15,510	15,830	15,460
	Quintile 2	18,480	19,290	19,320	18,660	19,050	19,990	20,950	20,980	21,010	20,670
	Quintile 3	22,170	23,670	23,460	22,850	23,080	23,610	25,100	25,250	25,210	24,520
	Quintile 4	27,210	28,640	28,460	27,320	28,030	28,260	29,640	29,770	30,040	29,590
	Quintile 5	37,340	38,670	38,630	37,680	37,330	37,490	39,230	39,900	39,830	39,590
Men	Quintile 1	8,540	9,490	9,390	8,880	9,340	9,930	10,300	10,300	10,470	10,140
	Quintile 2	13,290	14,520	14,450	13,580	13,810	14,500	14,840	15,030	14,920	14,580
	Quintile 3	17,150	18,650	18,330	17,390	17,690	18,310	18,800	18,800	18,870	18,350
	Quintile 4	22,010	23,300	23,490	22,280	22,420	23,060	23,410	23,520	23,670	23,490
	Quintile 5	32,850	34,430	34,590	32,930	33,080	33,420	34,140	34,870	35,580	34,720

### I.12.14 18 year old applicants by sex and POLAR4 quintile: England

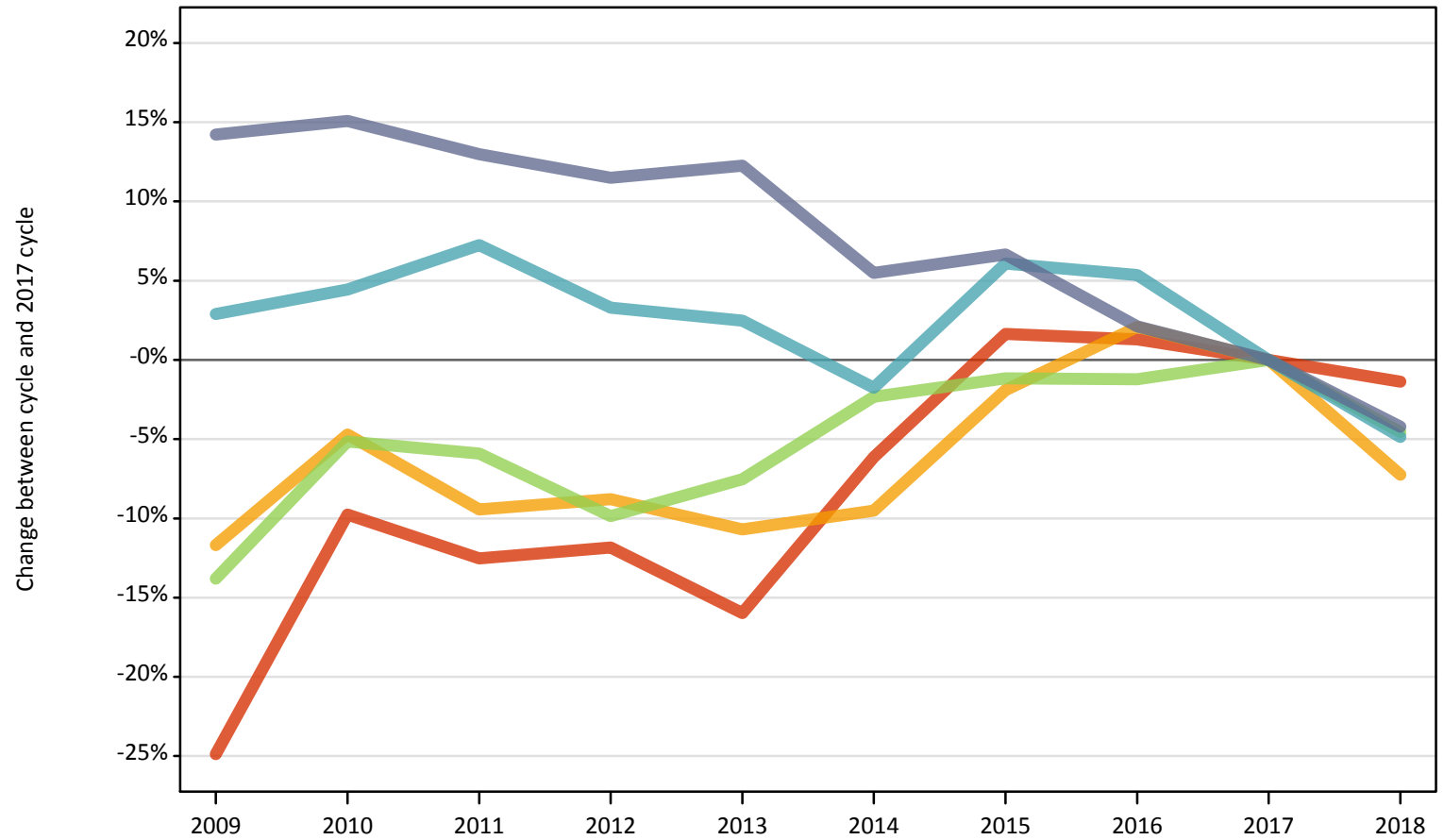
Difference between cycle and 2017 cycle

Sex and POLAR4 quintile of applicant		2009	2010	2011	2012	2013	2014	2015	2016	2017	2018
Women	Quintile 1	-22%	-15%	-12%	-17%	-16%	-8%	-2%	-2%	0%	-2%
	Quintile 2	-12%	-8%	-8%	-11%	-9%	-5%	-0%	-0%	0%	-2%
	Quintile 3	-12%	-6%	-7%	-9%	-8%	-6%	-0%	0%	0%	-3%
	Quintile 4	-9%	-5%	-5%	-9%	-7%	-6%	-1%	-1%	0%	-1%
	Quintile 5	-6%	-3%	-3%	-5%	-6%	-6%	-2%	0%	0%	-1%
Men	Quintile 1	-18%	-9%	-10%	-15%	-11%	-5%	-2%	-2%	0%	-3%
	Quintile 2	-11%	-3%	-3%	-9%	-7%	-3%	-1%	1%	0%	-2%
	Quintile 3	-9%	-1%	-3%	-8%	-6%	-3%	-0%	-0%	0%	-3%
	Quintile 4	-7%	-2%	-1%	-6%	-5%	-3%	-1%	-1%	0%	-1%
	Quintile 5	-8%	-3%	-3%	-7%	-7%	-6%	-4%	-2%	0%	-2%

Note: The percentage change is not recorded in the above table for groups with fewer than 10 applicants in that cycle or in the 2017 cycle.

**I.12.15 18 year old applicants by POLAR4 quintile: Northern Ireland**  
Difference between cycle and 2017 cycle

- Quintile 1
- Quintile 2
- Quintile 3
- Quintile 4
- Quintile 5



Note: The percentage change is not plotted in the above chart for groups with fewer than 500 applicants in any one cycle.

### I.12.16 18 year old applicants by POLAR4 quintile: Northern Ireland

POLAR4 quintile of applicant		2009	2010	2011	2012	2013	2014	2015	2016	2017	2018
Northern Ireland	Quintile 1	870	1,050	1,010	1,020	970	1,090	1,180	1,170	1,160	1,140
	Quintile 2	970	1,050	1,000	1,010	990	1,000	1,080	1,130	1,100	1,020
	Quintile 3	1,710	1,880	1,860	1,780	1,830	1,930	1,960	1,960	1,980	1,890
	Quintile 4	2,940	2,990	3,070	2,950	2,930	2,810	3,030	3,010	2,860	2,720
	Quintile 5	5,040	5,080	4,990	4,920	4,960	4,660	4,710	4,510	4,420	4,230

### I.12.17 18 year old applicants by POLAR4 quintile: Northern Ireland

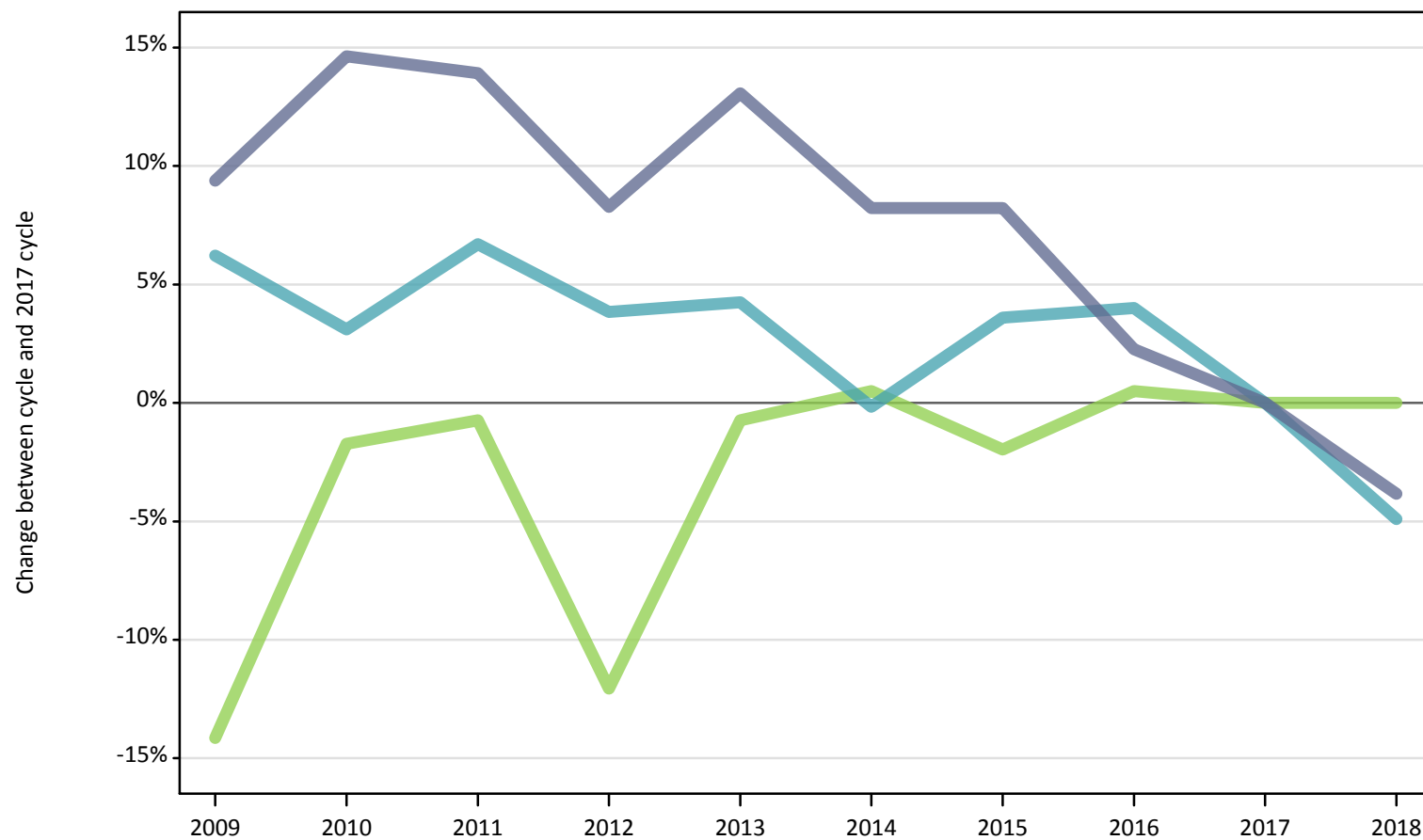
Difference between cycle and 2017 cycle

POLAR4 quintile of applicant		2009	2010	2011	2012	2013	2014	2015	2016	2017	2018
Northern Ireland	Quintile 1	-25%	-10%	-13%	-12%	-16%	-6%	2%	1%	0%	-1%
	Quintile 2	-12%	-5%	-9%	-9%	-11%	-10%	-2%	2%	0%	-7%
	Quintile 3	-14%	-5%	-6%	-10%	-8%	-2%	-1%	-1%	0%	-5%
	Quintile 4	3%	4%	7%	3%	2%	-2%	6%	5%	0%	-5%
	Quintile 5	14%	15%	13%	11%	12%	5%	7%	2%	0%	-4%

Note: The percentage change is not recorded in the above table for groups with fewer than 10 applicants in that cycle or in the 2017 cycle.

**I.12.18 18 year old applicants by POLAR4 quintile: Northern Ireland (Men)**  
Difference between cycle and 2017 cycle

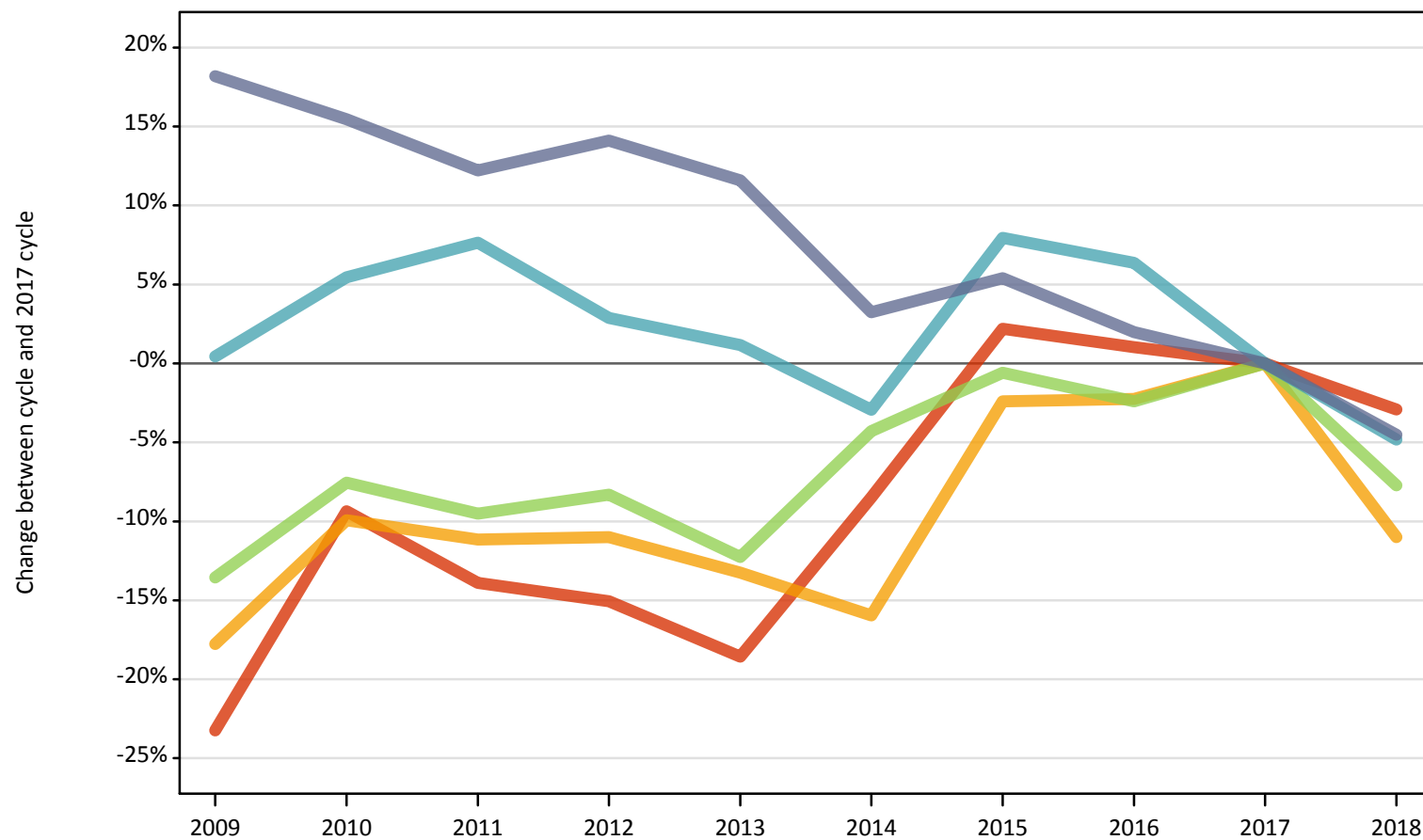
- Quintile 1
- Quintile 2
- Quintile 3
- Quintile 4
- Quintile 5



Note: The percentage change is not plotted in the above chart for groups with fewer than 500 applicants in any one cycle.

**I.12.19 18 year old applicants by POLAR4 quintile: Northern Ireland (Women)**  
Difference between cycle and 2017 cycle

- Quintile 1
- Quintile 2
- Quintile 3
- Quintile 4
- Quintile 5



Note: The percentage change is not plotted in the above chart for groups with fewer than 500 applicants in any one cycle.

### I.12.20 18 year old applicants by sex and POLAR4 quintile: Northern Ireland

Sex and POLAR4 quintile of applicant		2009	2010	2011	2012	2013	2014	2015	2016	2017	2018
Women	Quintile 1	530	620	590	580	560	630	700	690	680	660
	Quintile 2	550	600	590	590	580	560	650	650	660	590
	Quintile 3	1,010	1,080	1,060	1,070	1,020	1,120	1,160	1,140	1,170	1,080
	Quintile 4	1,640	1,720	1,760	1,680	1,650	1,590	1,770	1,740	1,640	1,560
	Quintile 5	2,870	2,810	2,730	2,780	2,710	2,510	2,560	2,480	2,430	2,320
Men	Quintile 1	350	430	420	440	420	460	480	480	470	480
	Quintile 2	430	450	410	420	410	440	430	480	440	430
	Quintile 3	700	800	810	720	810	820	800	820	810	810
	Quintile 4	1,300	1,260	1,310	1,270	1,280	1,220	1,270	1,270	1,220	1,160
	Quintile 5	2,170	2,270	2,260	2,150	2,240	2,150	2,150	2,030	1,980	1,910

### I.12.21 18 year old applicants by sex and POLAR4 quintile: Northern Ireland

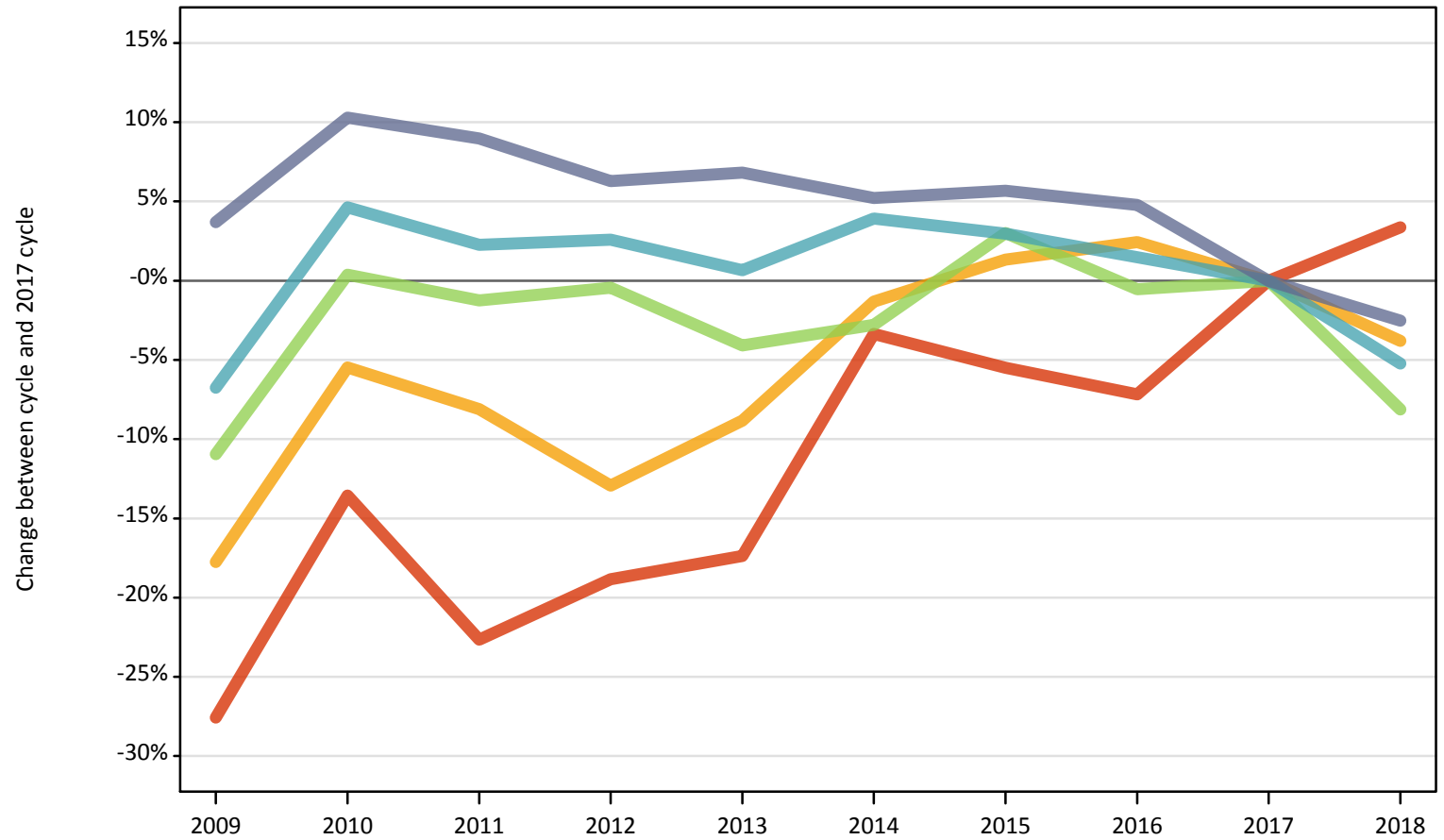
Difference between cycle and 2017 cycle

Sex and POLAR4 quintile of applicant		2009	2010	2011	2012	2013	2014	2015	2016	2017	2018
Women	Quintile 1	-23%	-9%	-14%	-15%	-19%	-8%	2%	1%	0%	-3%
	Quintile 2	-18%	-10%	-11%	-11%	-13%	-16%	-2%	-2%	0%	-11%
	Quintile 3	-14%	-8%	-10%	-8%	-12%	-4%	-1%	-2%	0%	-8%
	Quintile 4	0%	5%	8%	3%	1%	-3%	8%	6%	0%	-5%
	Quintile 5	18%	15%	12%	14%	12%	3%	5%	2%	0%	-5%
Men	Quintile 1	-27%	-10%	-11%	-7%	-12%	-3%	1%	2%	0%	1%
	Quintile 2	-3%	3%	-7%	-5%	-7%	0%	-1%	9%	0%	-2%
	Quintile 3	-14%	-2%	-1%	-12%	-1%	0%	-2%	0%	0%	0%
	Quintile 4	6%	3%	7%	4%	4%	-0%	4%	4%	0%	-5%
	Quintile 5	9%	15%	14%	8%	13%	8%	8%	2%	0%	-4%

Note: The percentage change is not recorded in the above table for groups with fewer than 10 applicants in that cycle or in the 2017 cycle.

**I.12.22 18 year old applicants by POLAR4 quintile: Scotland**  
Difference between cycle and 2017 cycle

- Quintile 1
- Quintile 2
- Quintile 3
- Quintile 4
- Quintile 5



Note: The percentage change is not plotted in the above chart for groups with fewer than 500 applicants in any one cycle.



### I.12.23 18 year old applicants by POLAR4 quintile: Scotland

POLAR4 quintile of applicant		2009	2010	2011	2012	2013	2014	2015	2016	2017	2018
Scotland	Quintile 1	650	770	690	720	740	860	840	830	890	920
	Quintile 2	1,620	1,860	1,810	1,720	1,800	1,950	2,000	2,020	1,970	1,900
	Quintile 3	2,840	3,200	3,150	3,170	3,060	3,100	3,280	3,170	3,190	2,930
	Quintile 4	4,140	4,640	4,540	4,550	4,470	4,610	4,570	4,500	4,440	4,210
	Quintile 5	8,670	9,230	9,120	8,890	8,940	8,800	8,840	8,760	8,370	8,150

### I.12.24 18 year old applicants by POLAR4 quintile: Scotland

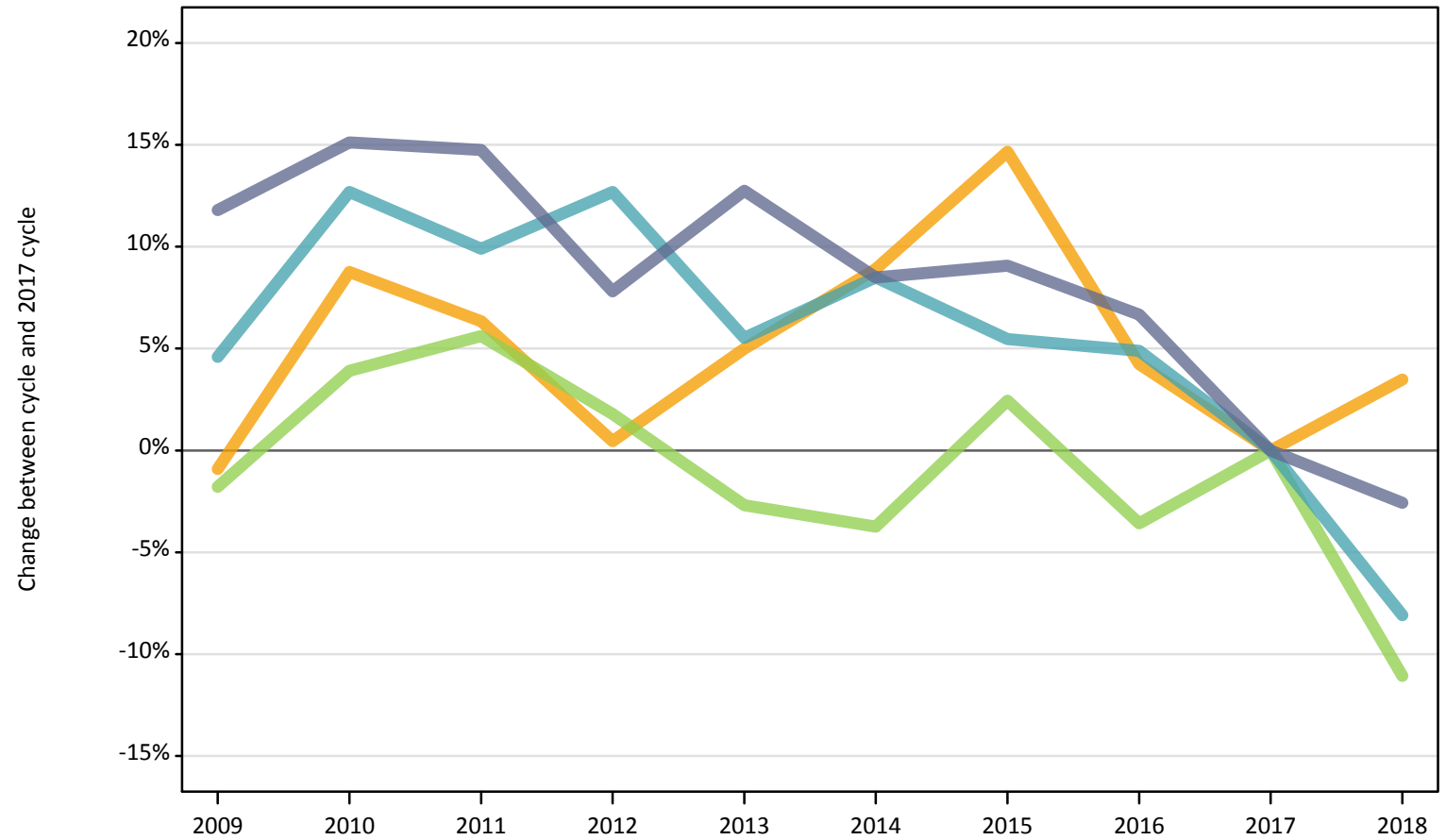
Difference between cycle and 2017 cycle

POLAR4 quintile of applicant		2009	2010	2011	2012	2013	2014	2015	2016	2017	2018
Scotland	Quintile 1	-28%	-14%	-23%	-19%	-17%	-3%	-5%	-7%	0%	3%
	Quintile 2	-18%	-5%	-8%	-13%	-9%	-1%	1%	2%	0%	-4%
	Quintile 3	-11%	0%	-1%	-0%	-4%	-3%	3%	-1%	0%	-8%
	Quintile 4	-7%	5%	2%	3%	1%	4%	3%	1%	0%	-5%
	Quintile 5	4%	10%	9%	6%	7%	5%	6%	5%	0%	-3%

Note: The percentage change is not recorded in the above table for groups with fewer than 10 applicants in that cycle or in the 2017 cycle.

**I.12.25 18 year old applicants by POLAR4 quintile: Scotland (Men)**  
Difference between cycle and 2017 cycle

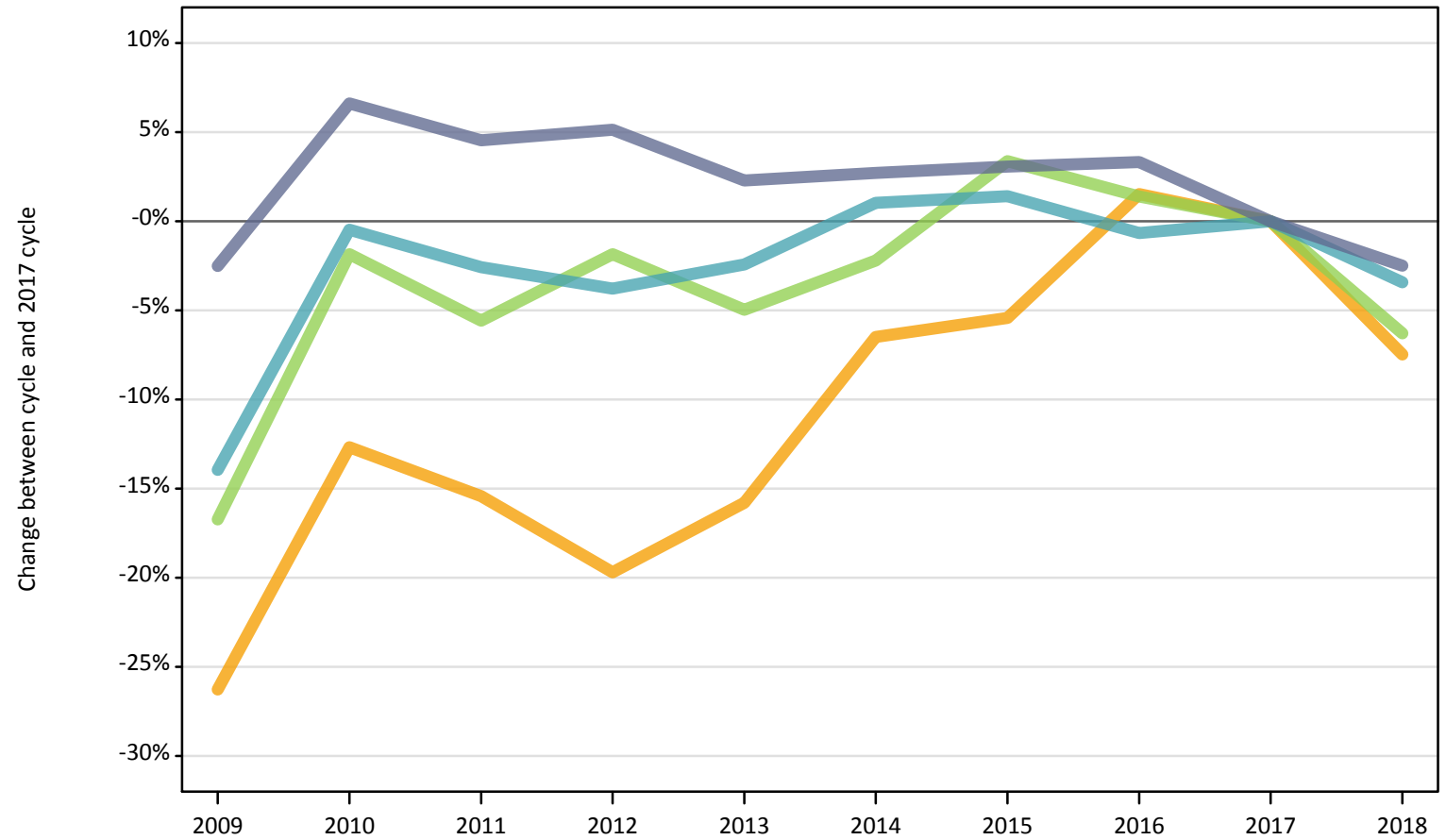
- Quintile 1
- Quintile 2
- Quintile 3
- Quintile 4
- Quintile 5



Note: The percentage change is not plotted in the above chart for groups with fewer than 500 applicants in any one cycle.

**I.12.26 18 year old applicants by POLAR4 quintile: Scotland (Women)**  
Difference between cycle and 2017 cycle

- Quintile 1
- Quintile 2
- Quintile 3
- Quintile 4
- Quintile 5



Note: The percentage change is not plotted in the above chart for groups with fewer than 500 applicants in any one cycle.

### I.12.27 18 year old applicants by sex and POLAR4 quintile: Scotland

Sex and POLAR4 quintile of applicant		2009	2010	2011	2012	2013	2014	2015	2016	2017	2018
Women	Quintile 1	380	470	420	440	440	550	540	550	570	590
	Quintile 2	970	1,140	1,110	1,050	1,100	1,230	1,240	1,330	1,310	1,210
	Quintile 3	1,630	1,920	1,850	1,920	1,860	1,910	2,020	1,980	1,960	1,830
	Quintile 4	2,340	2,710	2,650	2,620	2,650	2,750	2,760	2,700	2,720	2,630
	Quintile 5	4,620	5,050	4,950	4,980	4,850	4,870	4,880	4,900	4,740	4,620
Men	Quintile 1	260	300	270	290	300	310	300	270	320	340
	Quintile 2	660	720	700	670	700	720	760	690	660	690
	Quintile 3	1,210	1,280	1,300	1,250	1,200	1,180	1,260	1,190	1,230	1,090
	Quintile 4	1,800	1,940	1,890	1,940	1,810	1,860	1,810	1,800	1,720	1,580
	Quintile 5	4,050	4,170	4,160	3,910	4,090	3,930	3,960	3,870	3,630	3,530

### I.12.28 18 year old applicants by sex and POLAR4 quintile: Scotland

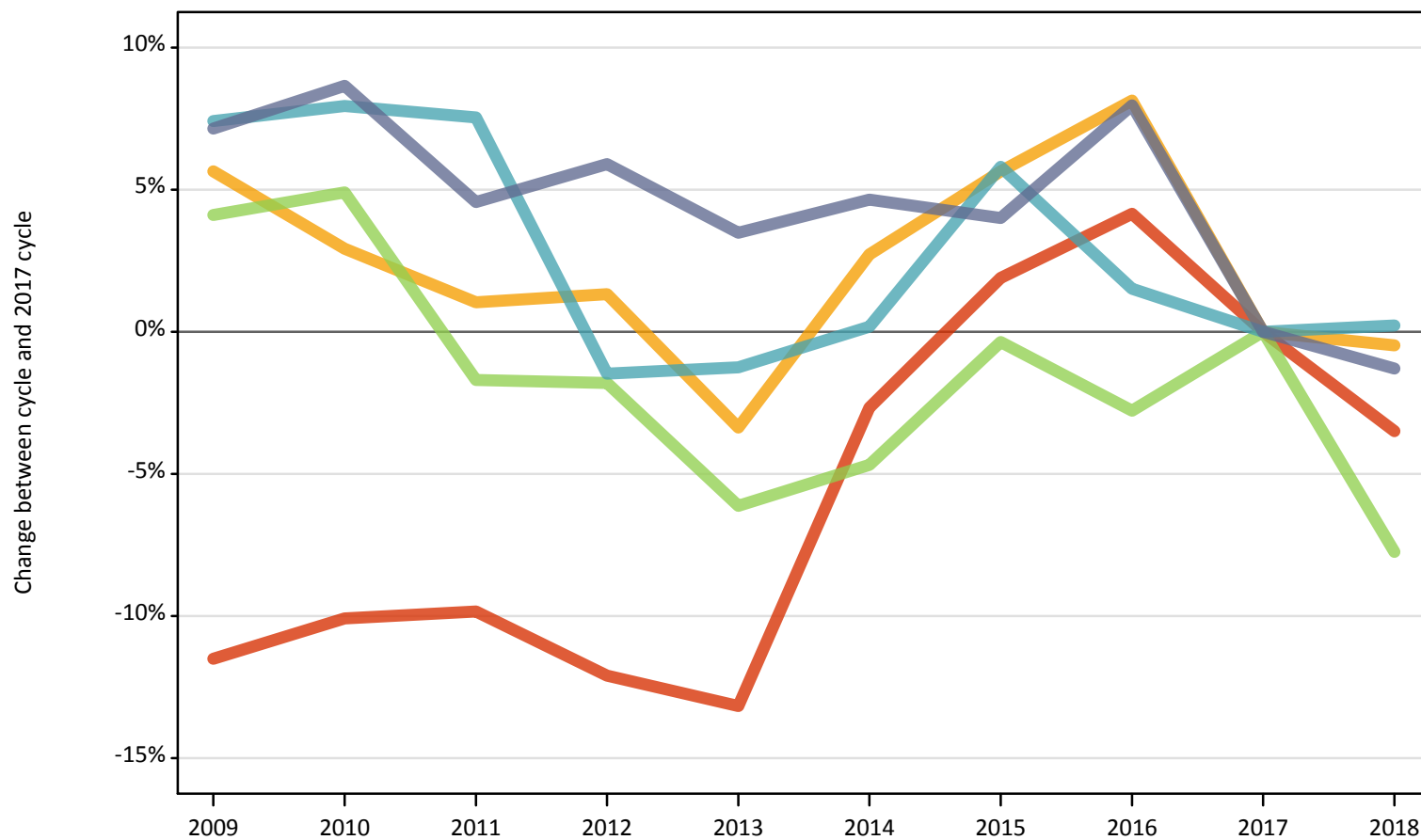
Difference between cycle and 2017 cycle

Sex and POLAR4 quintile of applicant		2009	2010	2011	2012	2013	2014	2015	2016	2017	2018
Women	Quintile 1	-33%	-18%	-26%	-23%	-22%	-4%	-5%	-3%	0%	3%
	Quintile 2	-26%	-13%	-15%	-20%	-16%	-6%	-5%	2%	0%	-7%
	Quintile 3	-17%	-2%	-6%	-2%	-5%	-2%	3%	1%	0%	-6%
	Quintile 4	-14%	-0%	-3%	-4%	-2%	1%	1%	-1%	0%	-3%
	Quintile 5	-3%	7%	5%	5%	2%	3%	3%	3%	0%	-2%
Men	Quintile 1	-18%	-7%	-16%	-11%	-8%	-3%	-7%	-15%	0%	4%
	Quintile 2	-1%	9%	6%	0%	5%	9%	15%	4%	0%	3%
	Quintile 3	-2%	4%	6%	2%	-3%	-4%	2%	-4%	0%	-11%
	Quintile 4	5%	13%	10%	13%	6%	8%	5%	5%	0%	-8%
	Quintile 5	12%	15%	15%	8%	13%	8%	9%	7%	0%	-3%

Note: The percentage change is not recorded in the above table for groups with fewer than 10 applicants in that cycle or in the 2017 cycle.

**I.12.29 18 year old applicants by POLAR4 quintile: Wales**  
Difference between cycle and 2017 cycle

- Quintile 1
- Quintile 2
- Quintile 3
- Quintile 4
- Quintile 5



Note: The percentage change is not plotted in the above chart for groups with fewer than 500 applicants in any one cycle.

### I.12.30 18 year old applicants by POLAR4 quintile: Wales

POLAR4 quintile of applicant		2009	2010	2011	2012	2013	2014	2015	2016	2017	2018
Wales	Quintile 1	1,490	1,520	1,520	1,480	1,470	1,640	1,720	1,760	1,690	1,630
	Quintile 2	2,640	2,570	2,520	2,530	2,410	2,560	2,640	2,700	2,500	2,480
	Quintile 3	2,890	2,910	2,730	2,730	2,610	2,650	2,770	2,700	2,780	2,560
	Quintile 4	2,410	2,420	2,410	2,210	2,210	2,240	2,370	2,270	2,240	2,250
	Quintile 5	2,490	2,520	2,430	2,460	2,400	2,430	2,420	2,510	2,320	2,290

### I.12.31 18 year old applicants by POLAR4 quintile: Wales

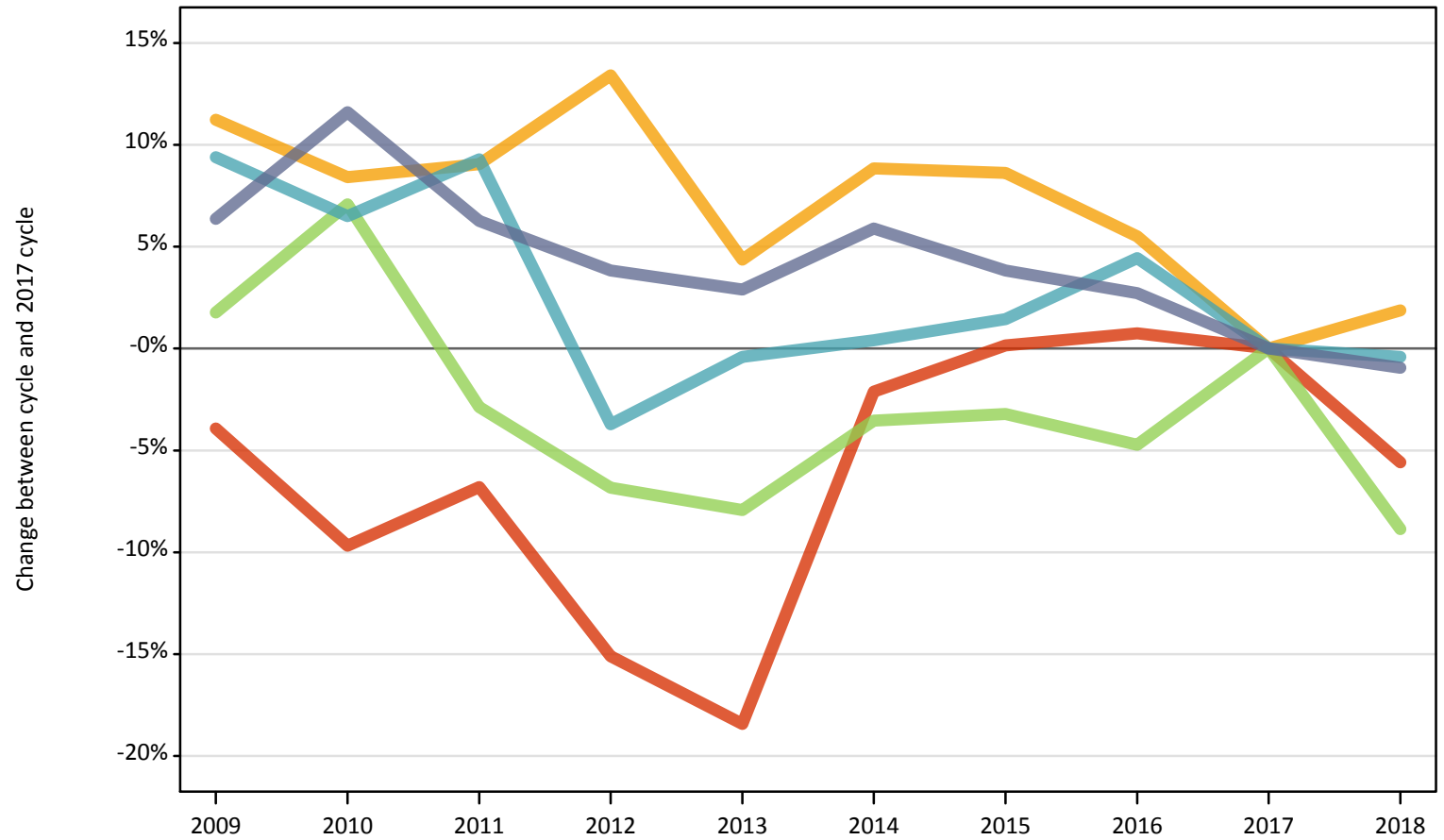
Difference between cycle and 2017 cycle

POLAR4 quintile of applicant		2009	2010	2011	2012	2013	2014	2015	2016	2017	2018
Wales	Quintile 1	-11%	-10%	-10%	-12%	-13%	-3%	2%	4%	0%	-3%
	Quintile 2	6%	3%	1%	1%	-3%	3%	6%	8%	0%	-0%
	Quintile 3	4%	5%	-2%	-2%	-6%	-5%	-0%	-3%	0%	-8%
	Quintile 4	7%	8%	8%	-1%	-1%	0%	6%	2%	0%	0%
	Quintile 5	7%	9%	5%	6%	3%	5%	4%	8%	0%	-1%

Note: The percentage change is not recorded in the above table for groups with fewer than 10 applicants in that cycle or in the 2017 cycle.

**I.12.32 18 year old applicants by POLAR4 quintile: Wales (Men)**  
Difference between cycle and 2017 cycle

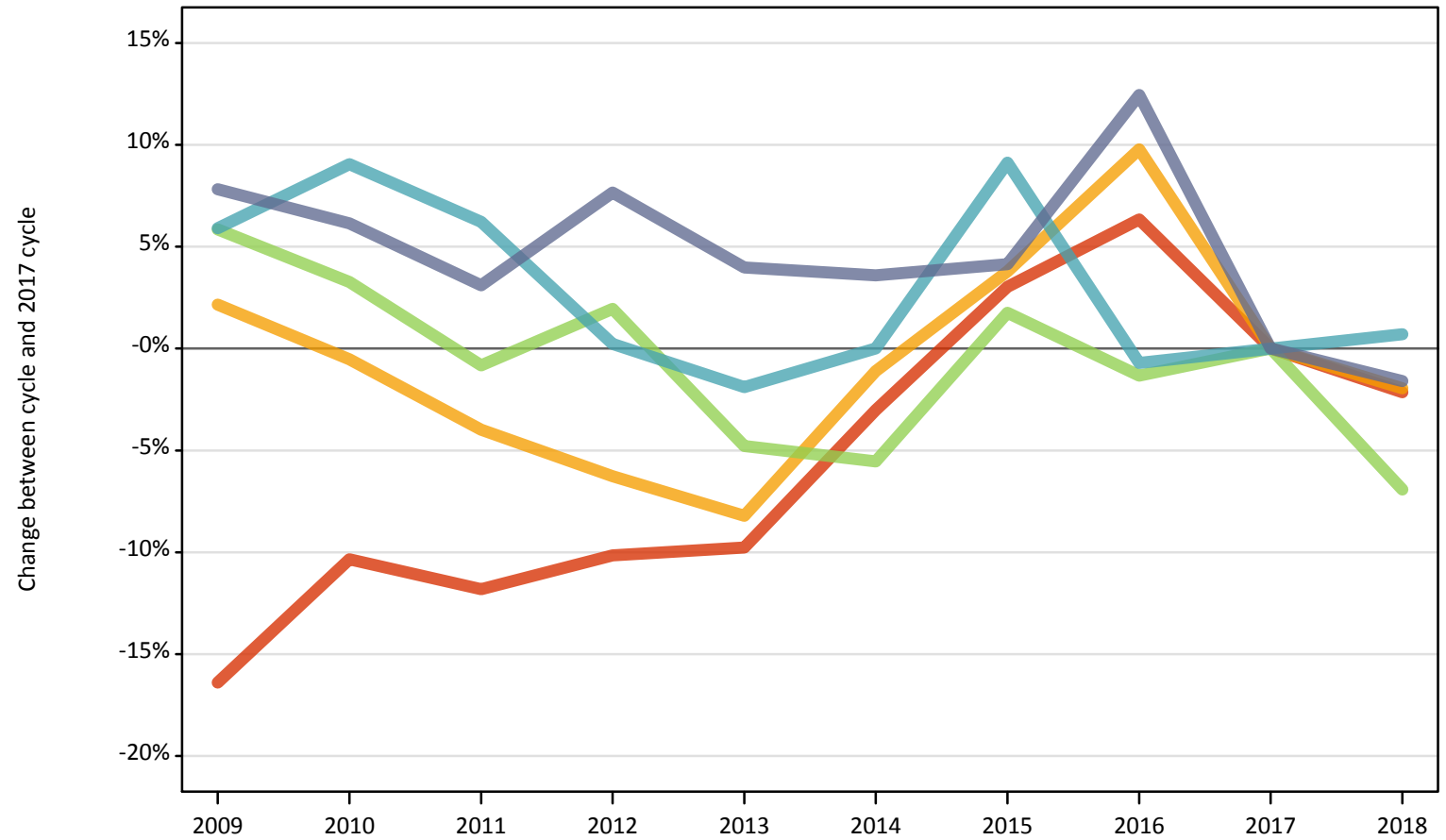
- Quintile 1
- Quintile 2
- Quintile 3
- Quintile 4
- Quintile 5



Note: The percentage change is not plotted in the above chart for groups with fewer than 500 applicants in any one cycle.

**I.12.33 18 year old applicants by POLAR4 quintile: Wales (Women)**  
Difference between cycle and 2017 cycle

- Quintile 1
- Quintile 2
- Quintile 3
- Quintile 4
- Quintile 5



Note: The percentage change is not plotted in the above chart for groups with fewer than 500 applicants in any one cycle.



### I.12.34 18 year old applicants by sex and POLAR4 quintile: Wales

Sex and POLAR4 quintile of applicant		2009	2010	2011	2012	2013	2014	2015	2016	2017	2018
Women	Quintile 1	860	920	900	920	930	990	1,060	1,090	1,030	1,000
	Quintile 2	1,570	1,530	1,470	1,440	1,410	1,520	1,590	1,680	1,530	1,500
	Quintile 3	1,680	1,640	1,580	1,620	1,510	1,500	1,620	1,570	1,590	1,480
	Quintile 4	1,350	1,390	1,350	1,270	1,250	1,270	1,390	1,260	1,270	1,280
	Quintile 5	1,350	1,330	1,290	1,350	1,300	1,300	1,310	1,410	1,250	1,230
Men	Quintile 1	640	600	620	560	540	650	660	670	660	630
	Quintile 2	1,070	1,040	1,050	1,090	1,000	1,050	1,050	1,020	960	980
	Quintile 3	1,210	1,270	1,150	1,110	1,090	1,140	1,150	1,130	1,190	1,080
	Quintile 4	1,060	1,030	1,060	930	970	970	980	1,010	970	970
	Quintile 5	1,140	1,190	1,140	1,110	1,100	1,130	1,110	1,100	1,070	1,060

### I.12.35 18 year old applicants by sex and POLAR4 quintile: Wales

Difference between cycle and 2017 cycle

Sex and POLAR4 quintile of applicant		2009	2010	2011	2012	2013	2014	2015	2016	2017	2018
Women	Quintile 1	-16%	-10%	-12%	-10%	-10%	-3%	3%	6%	0%	-2%
	Quintile 2	2%	-1%	-4%	-6%	-8%	-1%	4%	10%	0%	-2%
	Quintile 3	6%	3%	-1%	2%	-5%	-6%	2%	-1%	0%	-7%
	Quintile 4	6%	9%	6%	0%	-2%	0%	9%	-1%	0%	1%
	Quintile 5	8%	6%	3%	8%	4%	4%	4%	12%	0%	-2%
Men	Quintile 1	-4%	-10%	-7%	-15%	-18%	-2%	0%	1%	0%	-6%
	Quintile 2	11%	8%	9%	13%	4%	9%	9%	6%	0%	2%
	Quintile 3	2%	7%	-3%	-7%	-8%	-4%	-3%	-5%	0%	-9%
	Quintile 4	9%	7%	9%	-4%	-0%	0%	1%	4%	0%	-0%
	Quintile 5	6%	12%	6%	4%	3%	6%	4%	3%	0%	-1%

Note: The percentage change is not recorded in the above table for groups with fewer than 10 applicants in that cycle or in the 2017 cycle.

### I.12.36 Technical notes and definitions

Applicants have been able to submit applications for all 2018 courses since early September.

Applicants who submit their applications to UCAS by the January deadline are considered 'on time' applicants for the large majority of courses offered through UCAS. Some art and design courses have a later deadline of 24 March. By definition all main scheme applications have been received by the 30 June deadline.

Counts of the number of applicants reported have been rounded to the nearest 10 applicants, this may result in instances where totals do not equal the sum of the components. Proportional changes have been rounded to the nearest whole percentage point.

#### Age

This statistical release uses country-specific age definitions which align with the cut off points for school/college cohorts within the different administrations of the UK. For England and Wales ages are defined on the 31 August, for Northern Ireland on the 1 July and for Scotland on the 28 February the following year. Defining ages in this way matches the assignment of children to school cohorts. For applicants outside of the UK the cohort cut off for England and Wales has been used.

#### Applicant

A person who has made an application in the UCAS system during the cycle reported (including applications for deferred entry). Records of prior acceptance (RPAs) are excluded.

#### Application

An application to a course at a provider made by an applicant in the UCAS main scheme. Applicants may make up to five main scheme applications.

#### Country of provider

An applicant may be counted once for each provider country they have applied to in the main scheme. If an applicant has applied to providers in multiple countries then the applicant is counted once within each country of provider applied to.

#### Domicile

Declared area of permanent residence. The Channel Islands and the Isle of Man have been assigned as 'Not EU'.

#### Ethnic group

High level grouping of ethnic origin as declared by the applicant: 'Asian', 'Black', 'Mixed', 'White', 'Other', 'Unknown'.

#### First time applicant

An applicant that did not apply to the UCAS scheme in the previous cycle.

#### Main scheme

The main UCAS application scheme through which up to five providers/courses can be applied to. This opens in September and closes to new applications on 30 June the following year.

#### Reapplicant

An applicant that applied to the UCAS scheme in the previous cycle.

#### Sex

As declared by the applicant.

### SIMD 2016

Scottish Index of Multiple Deprivation identifies small area concentrations of multiple deprivation across all of Scotland, providing a relative measure of deprivation among small areas (data zones). In this report, the SIMD 2016 has been used to group areas in each year in the times series.

### POLAR3

Developed by HEFCE and classifies small areas across the UK into five groups, according to their level of young participation in HE. Each of these groups represents around 20 per cent of young people, and is ranked from quintile 1 (areas with the lowest young participation rates, considered as the most disadvantaged) to quintile 5 (highest young participation rates, considered most advantaged).

### POLAR4

Developed by HEFCE and classifies small areas across the UK into five groups, according to their level of young participation in HE. Each of these groups represents around 20 per cent of young people, and is ranked from quintile 1 (areas with the lowest young participation rates, considered as the most disadvantaged) to quintile 5 (highest young participation rates, considered most advantaged). POLAR4 is the most recent version of the POLAR classification, and is available for the first time in UCAS? reporting since its launch in 2017.

### Tariff Group of provider

Providers are grouped as higher, medium or lower tariff based on their average levels of attainment of their accepted applicants (summarised through UCAS Tariff points) in recent cycles. Each group of providers accounted for around a third of all UK 18 year old acceptances in recent cycles.

### Subject group

The JACS3 classification used to classify courses into subject groups.