

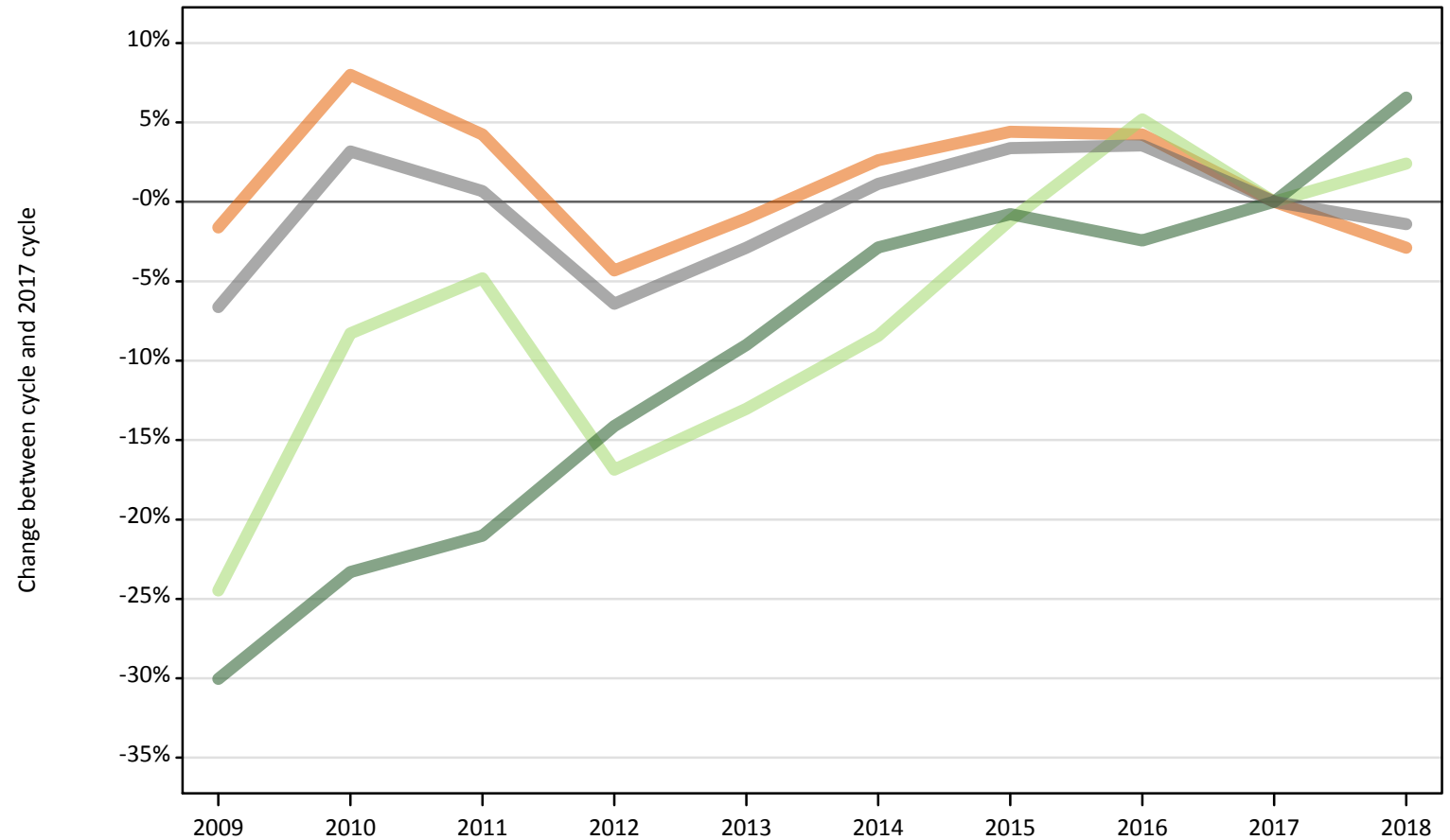
June Deadline Analysis: Reapplicants

Applicants by reapplication status at the 30 June deadline

1.3.1 First-time applicants by domicile group

Difference between cycle and 2017 cycle

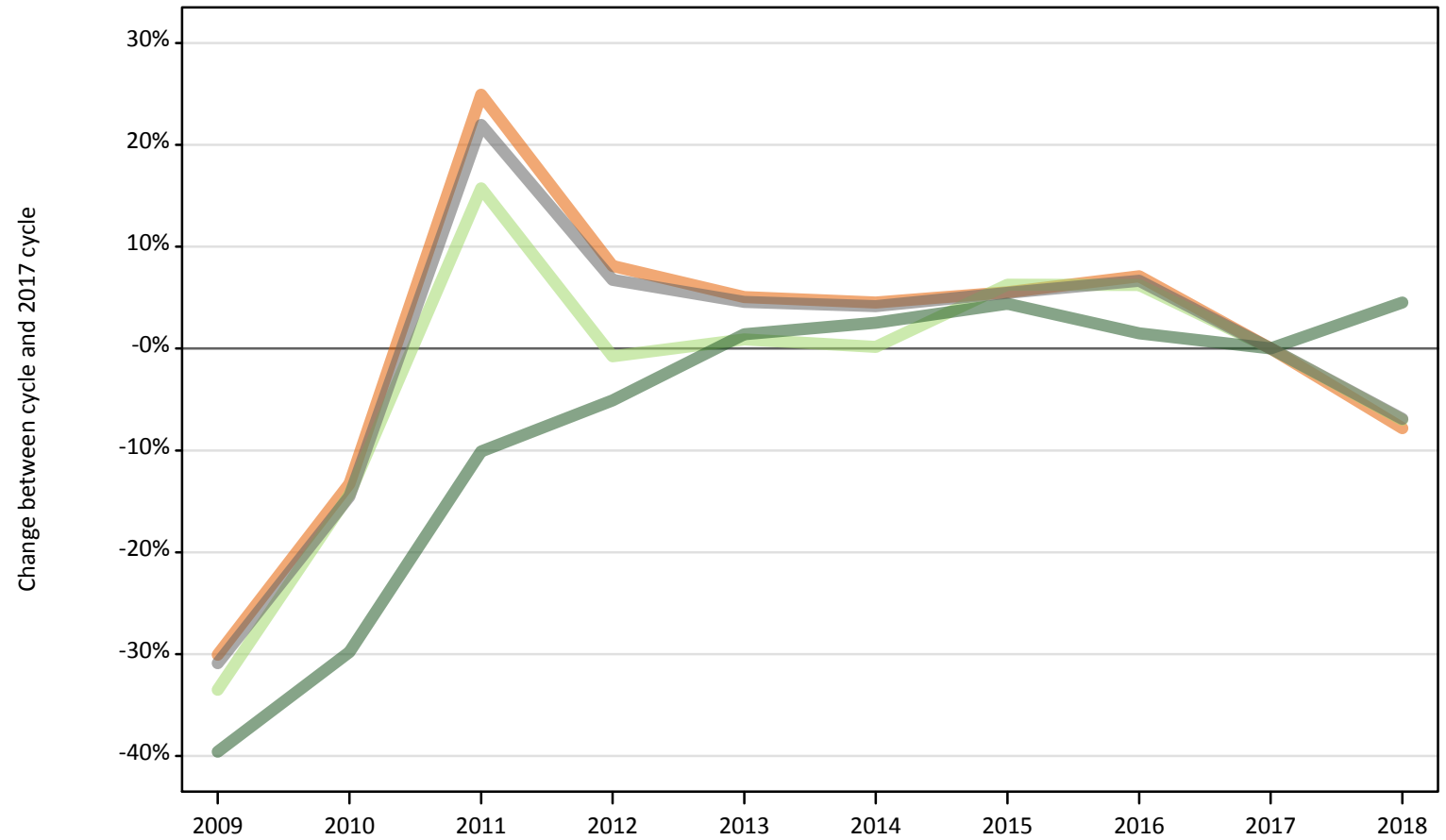
- UK
- EU (excluding UK)
- Not EU
- All domiciles



Note: The percentage change is not plotted in the above chart for groups with fewer than 500 applicants in any one cycle.

I.3.2 Reapplicants by domicile group Difference between cycle and 2017 cycle

- UK
- EU (excluding UK)
- Not EU
- All domiciles



Note: The percentage change is not plotted in the above chart for groups with fewer than 500 applicants in any one cycle.

I.3.3 Applicants by reapplication status and domicile group

Applicant status and domicile group		2009	2010	2011	2012	2013	2014	2015	2016	2017	2018
First-time applicant	UK	463,720	508,980	491,260	450,910	466,400	483,620	492,040	491,270	471,290	457,690
	EU (excluding UK)	34,710	42,150	43,740	38,200	39,960	42,080	45,420	48,340	45,950	47,050
	Not EU	46,220	50,670	52,180	56,730	60,110	64,170	65,550	64,460	66,060	70,400
	All domiciles	544,650	601,800	587,180	545,840	566,470	589,870	603,010	604,070	583,300	575,140
Reapplicant	UK	40,810	50,580	72,860	63,070	61,280	60,960	61,550	62,470	58,330	53,770
	EU (excluding UK)	2,200	2,830	3,820	3,280	3,330	3,310	3,510	3,510	3,300	3,070
	Not EU	2,880	3,350	4,290	4,520	4,830	4,890	4,980	4,840	4,770	4,980
	All domiciles	45,880	56,760	80,970	70,870	69,440	69,160	70,030	70,820	66,400	61,820
All	UK	504,520	559,570	564,120	513,970	527,670	544,580	553,590	553,740	529,620	511,460
	EU (excluding UK)	36,900	44,980	47,560	41,480	43,290	45,380	48,930	51,850	49,250	50,130
	Not EU	49,100	54,020	56,470	61,260	64,940	69,060	70,530	69,300	70,830	75,380
	All domiciles	590,530	658,560	668,150	616,700	635,910	659,030	673,040	674,890	649,700	636,960

I.3.4 Applicants by reapplication status and domicile group

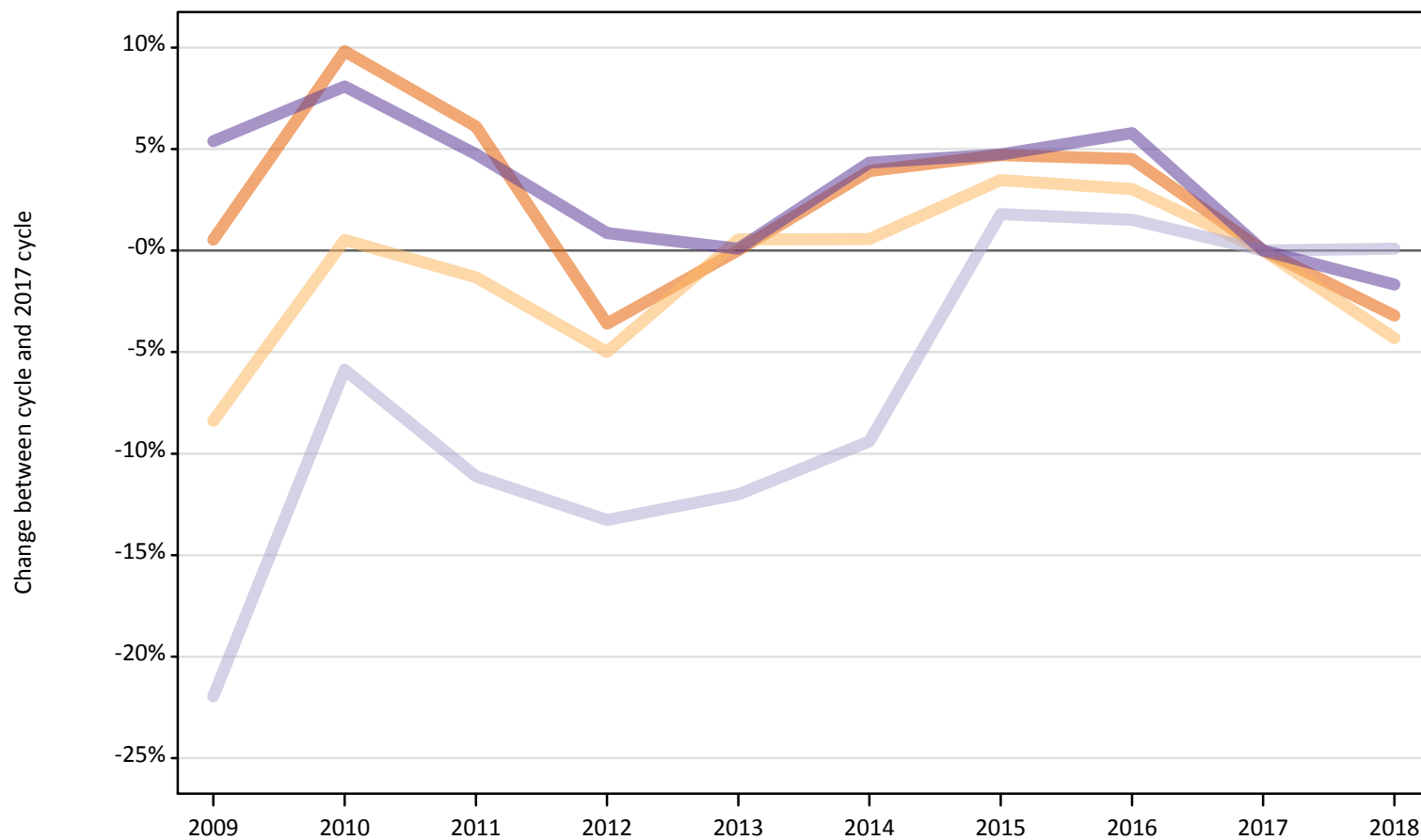
Difference between cycle and 2017 cycle

Applicant status and domicile group		2009	2010	2011	2012	2013	2014	2015	2016	2017	2018
First-time applicant	UK	-2%	8%	4%	-4%	-1%	3%	4%	4%	0%	-3%
	EU (excluding UK)	-24%	-8%	-5%	-17%	-13%	-8%	-1%	5%	0%	2%
	Not EU	-30%	-23%	-21%	-14%	-9%	-3%	-1%	-2%	0%	7%
	All domiciles	-7%	3%	1%	-6%	-3%	1%	3%	4%	0%	-1%
Reapplicant	UK	-30%	-13%	25%	8%	5%	5%	6%	7%	0%	-8%
	EU (excluding UK)	-33%	-14%	16%	-1%	1%	0%	6%	6%	0%	-7%
	Not EU	-40%	-30%	-10%	-5%	1%	3%	4%	2%	0%	5%
	All domiciles	-31%	-15%	22%	7%	5%	4%	5%	7%	0%	-7%
All	UK	-5%	6%	7%	-3%	-0%	3%	5%	5%	0%	-3%
	EU (excluding UK)	-25%	-9%	-3%	-16%	-12%	-8%	-1%	5%	0%	2%
	Not EU	-31%	-24%	-20%	-14%	-8%	-3%	-0%	-2%	0%	6%
	All domiciles	-9%	1%	3%	-5%	-2%	1%	4%	4%	0%	-2%

Note: The percentage change is not recorded in the above table for groups with fewer than 10 applicants in that cycle or in the 2017 cycle.

I.3.5 First-time applicants by UK country of domicile Difference between cycle and 2017 cycle

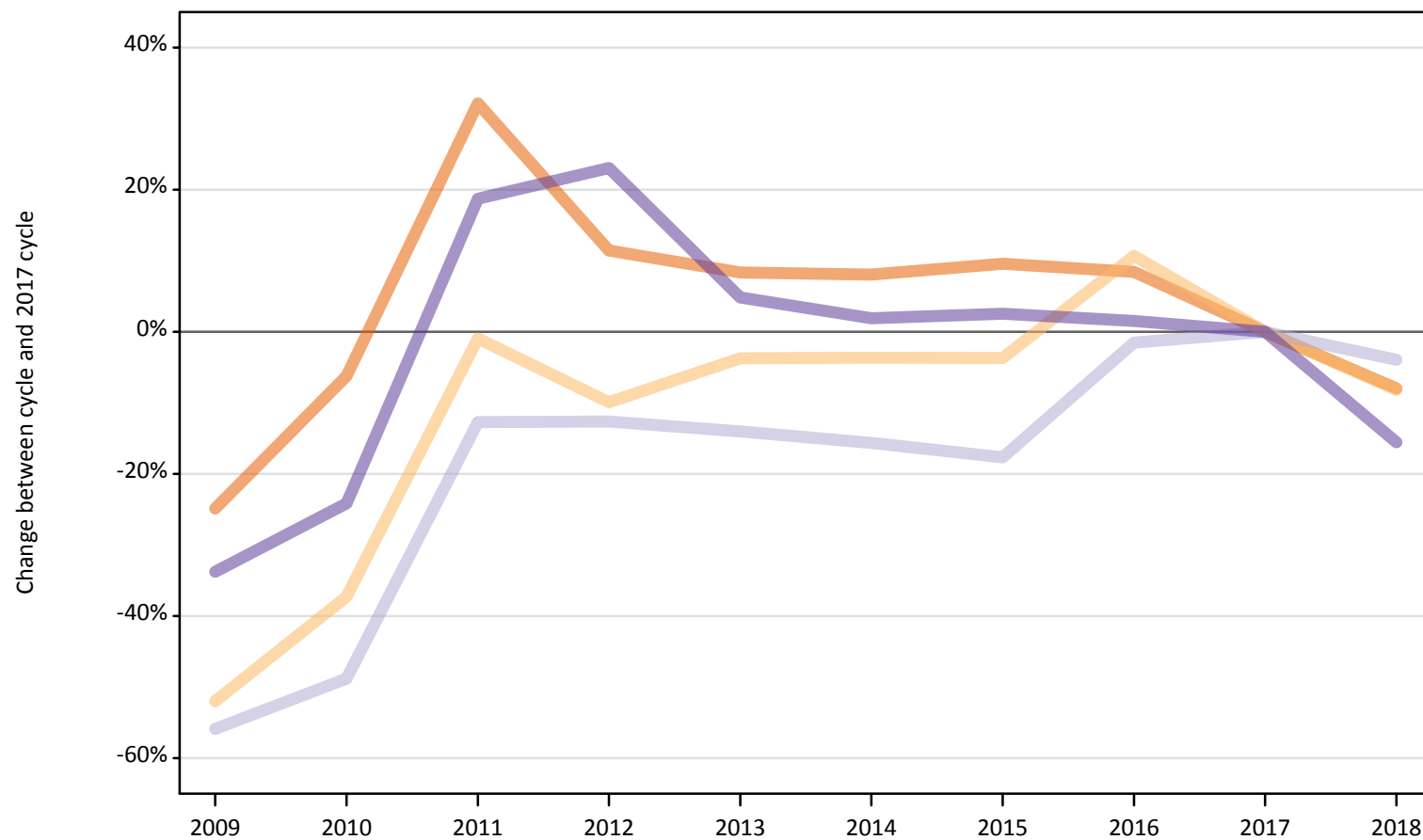
- England
- Northern Ireland
- Scotland
- Wales



Note: The percentage change is not plotted in the above chart for groups with fewer than 500 applicants in any one cycle.

I.3.6 Reapplicants by UK country of domicile Difference between cycle and 2017 cycle

- England
- Northern Ireland
- Scotland
- Wales



Note: The percentage change is not plotted in the above chart for groups with fewer than 500 applicants in any one cycle.

I.3.7 Applicants by reapplication status and UK country of domicile

Applicant status and domicile group		2009	2010	2011	2012	2013	2014	2015	2016	2017	2018
First-time applicant	England	393,320	429,690	415,170	377,170	391,300	406,560	409,680	408,890	391,250	378,710
	Northern Ireland	16,200	17,770	17,450	16,800	17,780	17,780	18,290	18,220	17,680	16,920
	Scotland	32,890	39,670	37,460	36,550	37,080	38,180	42,900	42,780	42,140	42,180
	Wales	21,310	21,850	21,180	20,390	20,240	21,100	21,180	21,390	20,220	19,880
	UK	463,720	508,980	491,260	450,910	466,400	483,620	492,040	491,270	471,290	457,690
Reapplicant	England	35,020	43,710	61,600	51,930	50,490	50,360	51,070	50,540	46,610	42,890
	Northern Ireland	1,250	1,640	2,590	2,350	2,520	2,520	2,520	2,890	2,610	2,400
	Scotland	3,000	3,480	5,930	5,940	5,840	5,730	5,600	6,690	6,800	6,530
	Wales	1,530	1,750	2,740	2,840	2,420	2,360	2,370	2,350	2,310	1,950
	UK	40,810	50,580	72,860	63,070	61,280	60,960	61,550	62,470	58,330	53,770
All	England	428,350	473,400	476,770	429,100	441,790	456,920	460,740	459,430	437,860	421,610
	Northern Ireland	17,450	19,410	20,030	19,150	20,290	20,300	20,810	21,110	20,290	19,310
	Scotland	35,890	43,150	43,390	42,490	42,930	43,910	48,490	49,470	48,940	48,710
	Wales	22,840	23,610	23,920	23,240	22,660	23,450	23,550	23,740	22,530	21,830
	UK	504,520	559,570	564,120	513,970	527,670	544,580	553,590	553,740	529,620	511,460

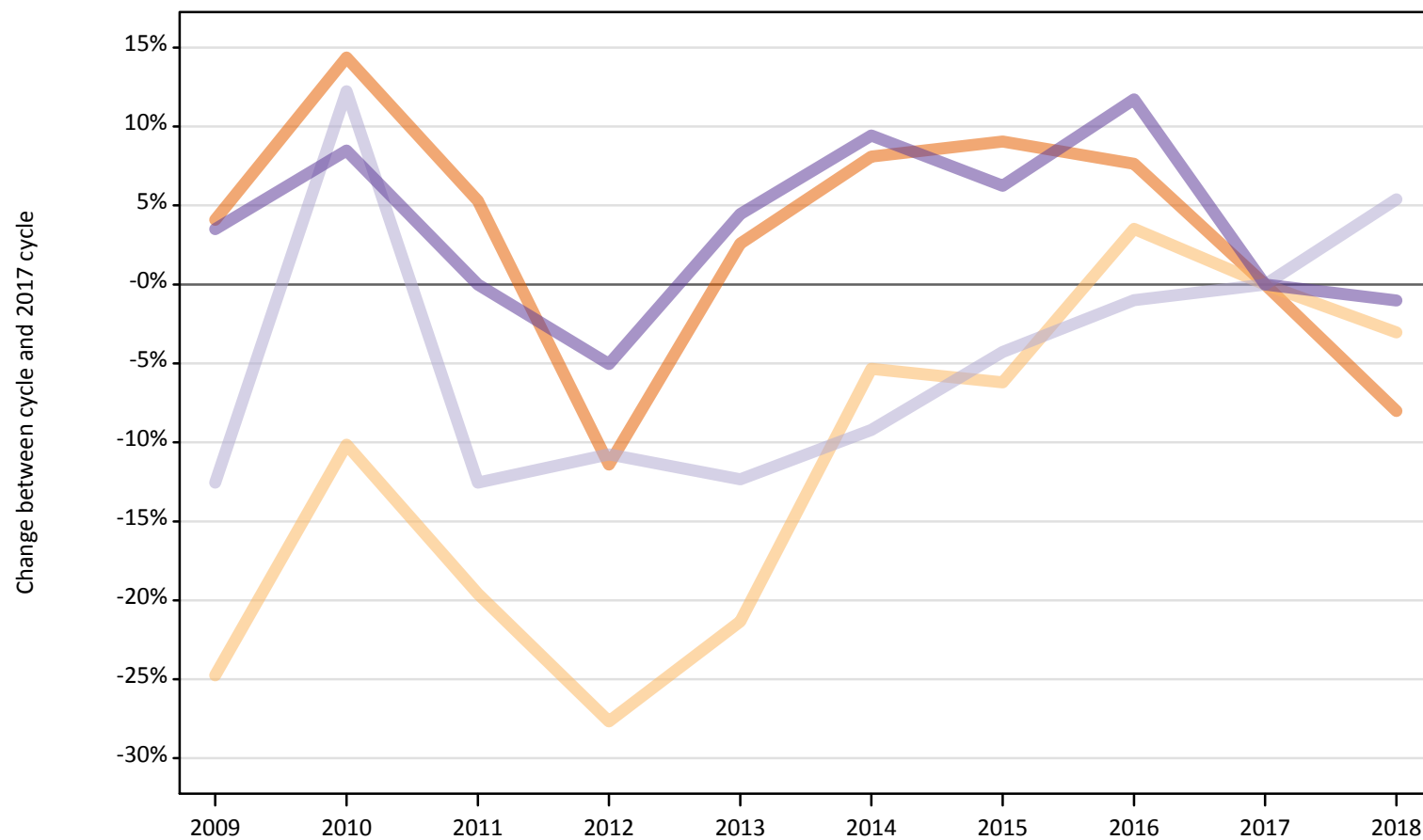
I.3.8 Applicants by reapplication status and UK country of domicile
 Difference between cycle and 2017 cycle

Applicant status and domicile group		2009	2010	2011	2012	2013	2014	2015	2016	2017	2018
First-time applicant	England	1%	10%	6%	-4%	0%	4%	5%	5%	0%	-3%
	Northern Ireland	-8%	1%	-1%	-5%	1%	1%	3%	3%	0%	-4%
	Scotland	-22%	-6%	-11%	-13%	-12%	-9%	2%	2%	0%	0%
	Wales	5%	8%	5%	1%	0%	4%	5%	6%	0%	-2%
	UK	-2%	8%	4%	-4%	-1%	3%	4%	4%	0%	-3%
Reapplicant	England	-25%	-6%	32%	11%	8%	8%	10%	8%	0%	-8%
	Northern Ireland	-52%	-37%	-1%	-10%	-4%	-4%	-4%	11%	0%	-8%
	Scotland	-56%	-49%	-13%	-13%	-14%	-16%	-18%	-2%	0%	-4%
	Wales	-34%	-24%	19%	23%	5%	2%	3%	2%	0%	-16%
	UK	-30%	-13%	25%	8%	5%	5%	6%	7%	0%	-8%
All	England	-2%	8%	9%	-2%	1%	4%	5%	5%	0%	-4%
	Northern Ireland	-14%	-4%	-1%	-6%	0%	0%	3%	4%	0%	-5%
	Scotland	-27%	-12%	-11%	-13%	-12%	-10%	-1%	1%	0%	-0%
	Wales	1%	5%	6%	3%	1%	4%	5%	5%	0%	-3%
	UK	-5%	6%	7%	-3%	-0%	3%	5%	5%	0%	-3%

Note: The percentage change is not recorded in the above table for groups with fewer than 10 applicants in that cycle or in the 2017 cycle.

I.3.9 19 year old first-time applicants by UK country of domicile Difference between cycle and 2017 cycle

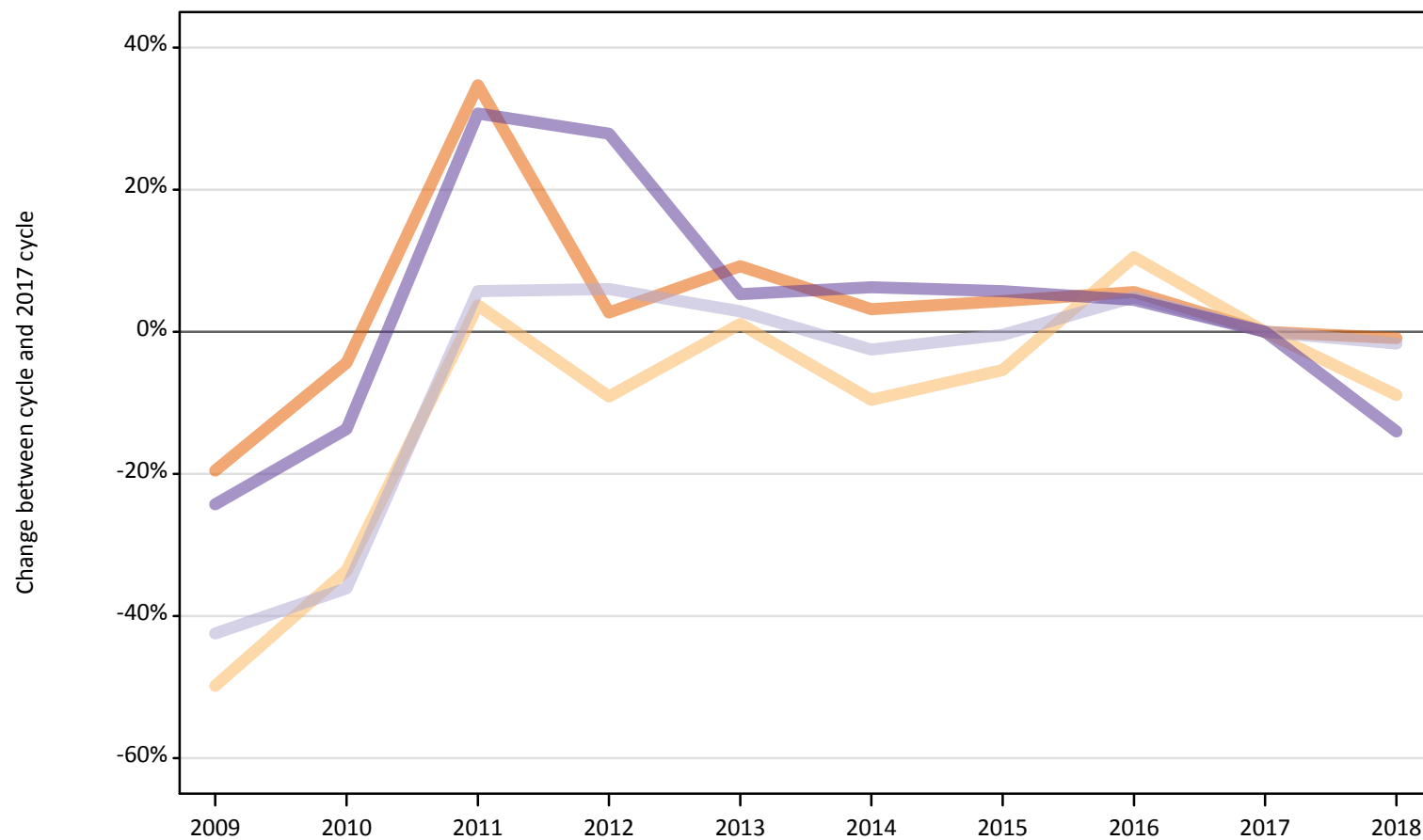
- England
- Northern Ireland
- Scotland
- Wales



Note: The percentage change is not plotted in the above chart for groups with fewer than 500 applicants in any one cycle.

I.3.10 19 year old reapplicants by UK country of domicile Difference between cycle and 2017 cycle

- England
- Northern Ireland
- Scotland
- Wales



Note: The percentage change is not plotted in the above chart for groups with fewer than 500 applicants in any one cycle.

I.3.11 19 year old applicants by reapplication status and UK country of domicile

Applicant status and domicile group		2009	2010	2011	2012	2013	2014	2015	2016	2017	2018
First-time applicant	England	61,000	67,020	61,700	51,930	60,120	63,350	63,910	63,080	58,600	53,900
	Northern Ireland	1,240	1,480	1,320	1,190	1,290	1,560	1,540	1,700	1,650	1,600
	Scotland	2,990	3,840	2,990	3,050	3,000	3,110	3,270	3,390	3,420	3,600
	Wales	2,930	3,070	2,830	2,690	2,960	3,100	3,010	3,170	2,830	2,810
	UK	68,160	75,410	68,850	58,860	67,380	71,110	71,740	71,330	66,500	61,910
Reapplicant	England	19,590	23,290	32,800	25,020	26,600	25,130	25,410	25,710	24,350	24,140
	Northern Ireland	870	1,150	1,790	1,570	1,740	1,560	1,630	1,910	1,720	1,570
	Scotland	1,430	1,590	2,630	2,630	2,560	2,420	2,470	2,610	2,480	2,440
	Wales	860	980	1,480	1,450	1,190	1,200	1,200	1,180	1,130	970
	UK	22,750	27,000	38,700	30,670	32,090	30,310	30,710	31,410	29,690	29,120
All	England	80,590	90,310	94,500	76,940	86,730	88,470	89,320	88,790	82,960	78,040
	Northern Ireland	2,100	2,620	3,110	2,760	3,040	3,120	3,170	3,610	3,370	3,170
	Scotland	4,420	5,430	5,620	5,690	5,550	5,530	5,750	5,990	5,900	6,050
	Wales	3,790	4,050	4,320	4,140	4,150	4,310	4,210	4,350	3,970	3,780
	UK	90,910	102,410	107,540	89,520	99,470	101,420	102,450	102,740	96,200	91,030

I.3.12 19 year old applicants by reapplication status and UK country of domicile

Difference between cycle and 2017 cycle

Applicant status and domicile group		2009	2010	2011	2012	2013	2014	2015	2016	2017	2018
First-time applicant	England	4%	14%	5%	-11%	3%	8%	9%	8%	0%	-8%
	Northern Ireland	-25%	-10%	-20%	-28%	-21%	-5%	-6%	4%	0%	-3%
	Scotland	-13%	12%	-13%	-11%	-12%	-9%	-4%	-1%	0%	5%
	Wales	3%	8%	0%	-5%	4%	9%	6%	12%	0%	-1%
	UK	2%	13%	4%	-11%	1%	7%	8%	7%	0%	-7%
Reapplicant	England	-20%	-4%	35%	3%	9%	3%	4%	6%	0%	-1%
	Northern Ireland	-50%	-34%	4%	-9%	1%	-10%	-5%	10%	0%	-9%
	Scotland	-42%	-36%	6%	6%	3%	-2%	-0%	5%	0%	-2%
	Wales	-24%	-14%	31%	28%	5%	6%	6%	5%	0%	-14%
	UK	-23%	-9%	30%	3%	8%	2%	3%	6%	0%	-2%
All	England	-3%	9%	14%	-7%	5%	7%	8%	7%	0%	-6%
	Northern Ireland	-38%	-22%	-8%	-18%	-10%	-8%	-6%	7%	0%	-6%
	Scotland	-25%	-8%	-5%	-4%	-6%	-6%	-3%	1%	0%	2%
	Wales	-4%	2%	9%	4%	5%	9%	6%	10%	0%	-5%
	UK	-5%	6%	12%	-7%	3%	5%	6%	7%	0%	-5%

Note: The percentage change is not recorded in the above table for groups with fewer than 10 applicants in that cycle or in the 2017 cycle.

I.3.13 Technical notes and definitions

Applicants have been able to submit applications for all 2018 courses since early September.

Applicants who submit their applications to UCAS by the January deadline are considered 'on time' applicants for the large majority of courses offered through UCAS. Some art and design courses have a later deadline of 24 March. By definition all main scheme applications have been received by the 30 June deadline.

Counts of the number of applicants reported have been rounded to the nearest 10 applicants, this may result in instances where totals do not equal the sum of the components. Proportional changes have been rounded to the nearest whole percentage point.

In 2009, the Canary Islands classification changed from Not EU to EU (excluding UK). In order to present an accurate time series, the Canary Islands have been consistently classified as EU (excluding UK). This will result in differences with data published prior to 2010.

Age

This statistical release uses country-specific age definitions which align with the cut off points for school/college cohorts within the different administrations of the UK. For England and Wales ages are defined on the 31 August, for Northern Ireland on the 1 July and for Scotland on the 28 February the following year. Defining ages in this way matches the assignment of children to school cohorts. For applicants outside of the UK the cohort cut off for England and Wales has been used.

Applicant

A person who has made an application in the UCAS system during the cycle reported (including applications for deferred entry). Records of prior acceptance (RPAs) are excluded.

Application

An application to a course at a provider made by an applicant in the UCAS main scheme. Applicants may make up to five main scheme applications.

Country of provider

An applicant may be counted once for each provider country they have applied to in the main scheme. If an applicant has applied to providers in multiple countries then the applicant is counted once within each country of provider applied to.

Domicile

Declared area of permanent residence. The Channel Islands and the Isle of Man have been assigned as 'Not EU'.

Ethnic group

High level grouping of ethnic origin as declared by the applicant: 'Asian', 'Black', 'Mixed', 'White', 'Other', 'Unknown'.

First time applicant

An applicant that did not apply to the UCAS scheme in the previous cycle.

Main scheme

The main UCAS application scheme through which up to five providers/courses can be applied to. This opens in September and closes to new applications on 30 June the following year.

Reapplicant

An applicant that applied to the UCAS scheme in the previous cycle.

Sex

As declared by the applicant.

SIMD 2016

Scottish Index of Multiple Deprivation identifies small area concentrations of multiple deprivation across all of Scotland, providing a relative measure of deprivation among small areas (data zones). In this report, the SIMD 2016 has been used to group areas in each year in the times series.

POLAR3

Developed by HEFCE and classifies small areas across the UK into five groups, according to their level of young participation in HE. Each of these groups represents around 20 per cent of young people, and is ranked from quintile 1 (areas with the lowest young participation rates, considered as the most disadvantaged) to quintile 5 (highest young participation rates, considered most advantaged).

POLAR4

Developed by HEFCE and classifies small areas across the UK into five groups, according to their level of young participation in HE. Each of these groups represents around 20 per cent of young people, and is ranked from quintile 1 (areas with the lowest young participation rates, considered as the most disadvantaged) to quintile 5 (highest young participation rates, considered most advantaged). POLAR4 is the most recent version of the POLAR classification, and is available for the first time in UCAS? reporting since its launch in 2017.

Tariff Group of provider

Providers are grouped as higher, medium or lower tariff based on their average levels of attainment of their accepted applicants (summarised through UCAS Tariff points) in recent cycles. Each group of providers accounted for around a third of all UK 18 year old acceptances in recent cycles.

Subject group

The JACS3 classification used to classify courses into subject groups.