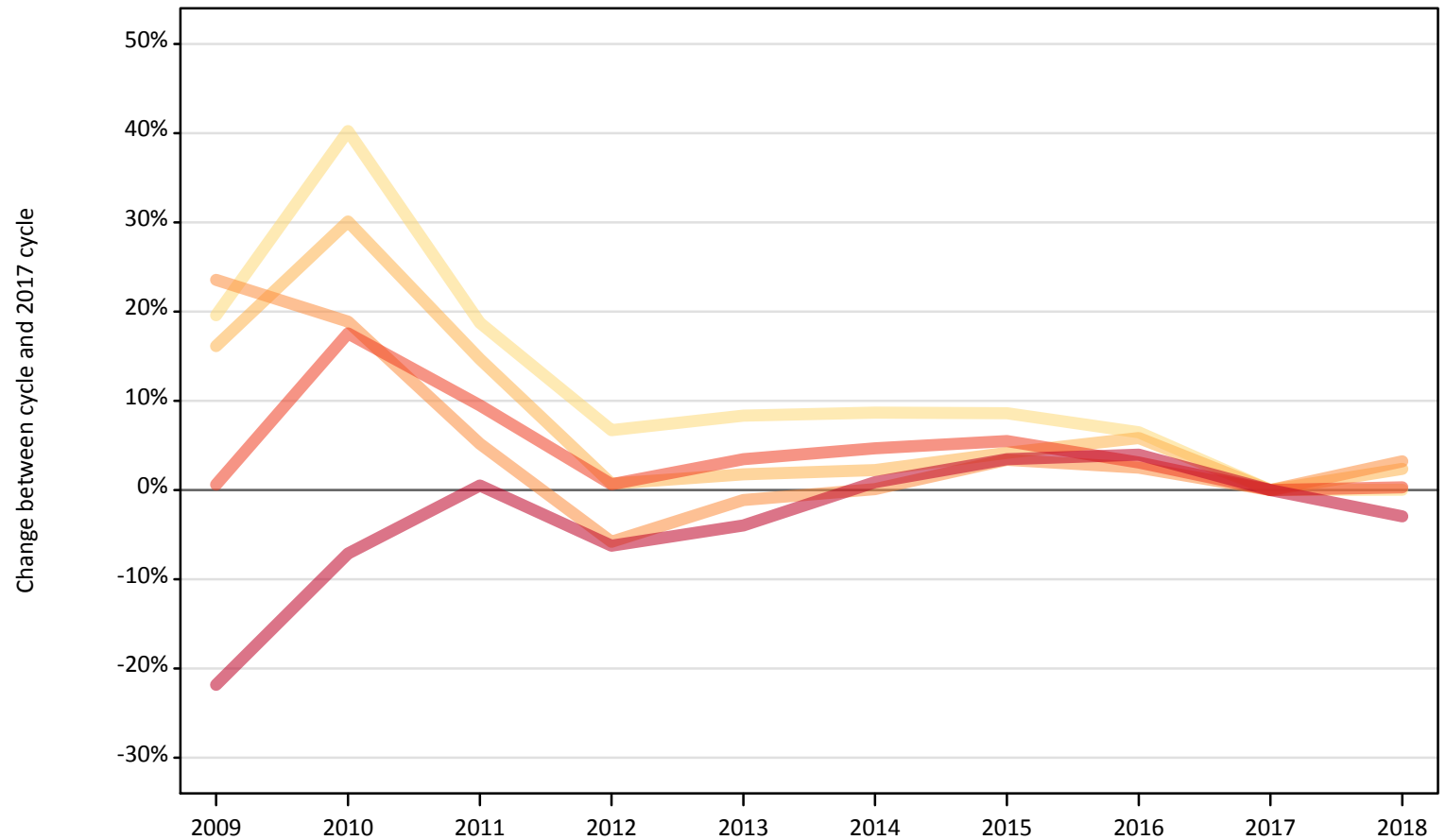


March Deadline Analysis: Applications

Applicants by number of applications at the 24 March deadline

F.4.1 Applicants by domicile and number of applications made : All domiciles Difference between cycle and 2017 cycle

- 1 application
- 2 applications
- 3 applications
- 4 applications
- 5 applications



Note: The percentage change is not plotted in the above chart for groups with fewer than 500 applications in any one cycle.

F.4.2 Applicants by domicile and number of applications made : All domiciles

Domicile and number of applications made by applicant		2009	2010	2011	2012	2013	2014	2015	2016	2017	2018
All domiciles	1 application	55,350	64,900	54,950	49,390	50,150	50,300	50,280	49,280	46,280	46,310
	2 applications	25,800	28,900	25,470	22,370	22,600	22,700	23,140	23,510	22,210	22,740
	3 applications	38,380	36,920	32,670	29,260	30,710	31,090	32,110	31,840	31,060	32,060
	4 applications	53,290	62,250	57,990	53,310	54,800	55,450	55,870	54,590	52,960	53,130
	5 applications	351,170	417,260	451,490	421,290	431,480	453,210	464,760	467,140	449,260	436,040
	All	523,990	610,230	622,580	575,620	589,750	612,750	626,150	626,360	601,770	590,270

F.4.3 Applicants by domicile and number of applications made : All domiciles

Difference between cycle and 2017 cycle

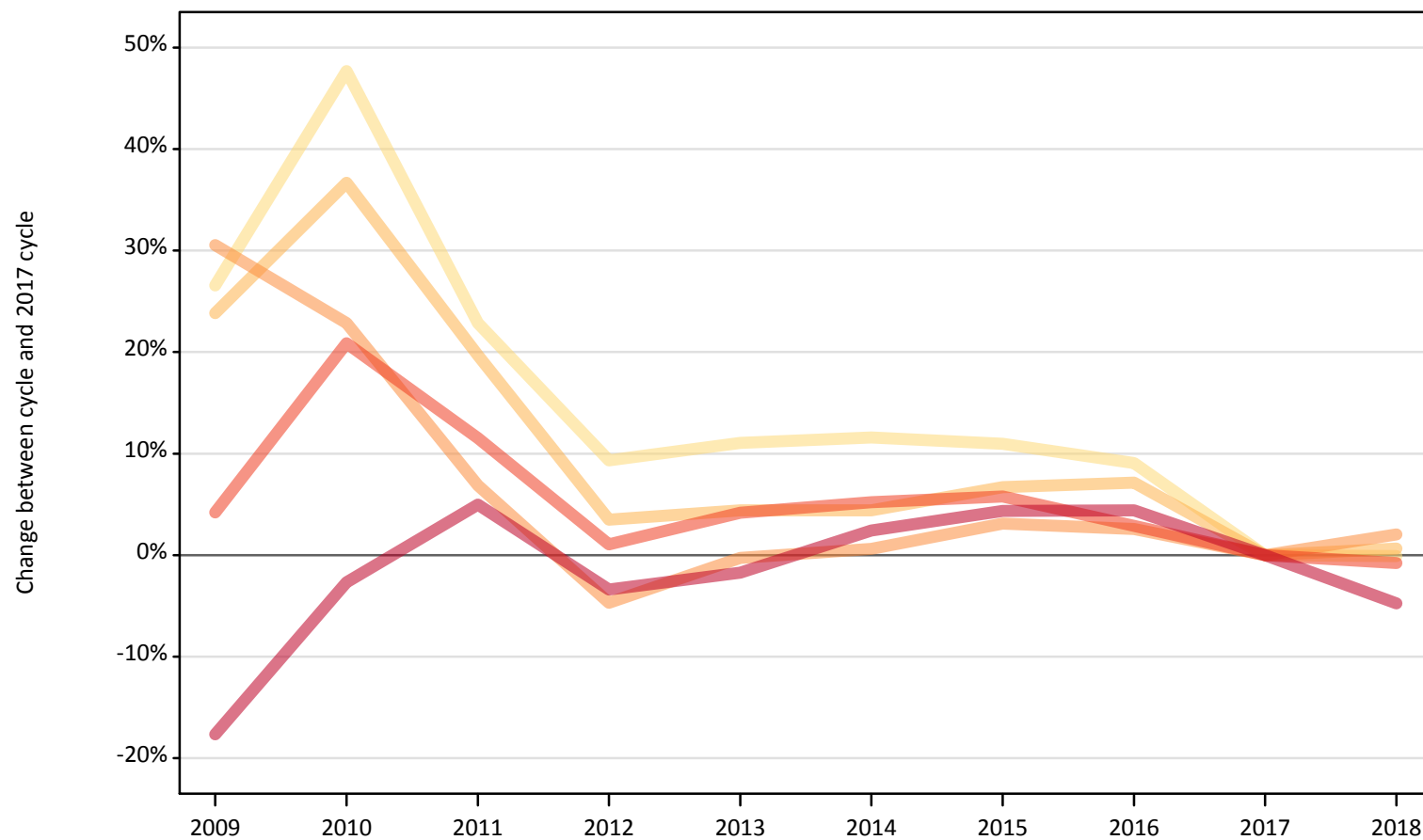
Domicile and number of applications made by applicant		2009	2010	2011	2012	2013	2014	2015	2016	2017	2018
All domiciles	1 application	20%	40%	19%	7%	8%	9%	9%	6%	0%	0%
	2 applications	16%	30%	15%	1%	2%	2%	4%	6%	0%	2%
	3 applications	24%	19%	5%	-6%	-1%	0%	3%	3%	0%	3%
	4 applications	1%	18%	9%	1%	3%	5%	5%	3%	0%	0%
	5 applications	-22%	-7%	0%	-6%	-4%	1%	3%	4%	0%	-3%
	All	-13%	1%	3%	-4%	-2%	2%	4%	4%	0%	-2%

Note: The percentage change is not recorded in the above table for groups with fewer than 10 applicants in that cycle or in the 2017 cycle.

F.4.4 Applicants by domicile and number of applications made : UK

Difference between cycle and 2017 cycle

- 1 application
- 2 applications
- 3 applications
- 4 applications
- 5 applications



Note: The percentage change is not plotted in the above chart for groups with fewer than 500 applications in any one cycle.

F.4.5 Applicants by domicile and number of applications made : UK

Domicile and number of applications made by applicant		2009	2010	2011	2012	2013	2014	2015	2016	2017	2018
UK	1 application	48,190	56,240	46,780	41,630	42,290	42,490	42,260	41,530	38,080	38,040
	2 applications	23,040	25,430	22,270	19,250	19,430	19,430	19,850	19,940	18,600	18,730
	3 applications	34,650	32,620	28,370	25,310	26,480	26,710	27,370	27,230	26,550	27,090
	4 applications	47,080	54,610	50,390	45,660	47,070	47,530	47,800	46,500	45,180	44,830
	5 applications	302,760	357,820	385,870	355,170	361,280	376,500	383,600	383,830	367,600	350,110
	All	455,720	526,710	533,680	487,020	496,550	512,660	520,880	519,030	496,010	478,800

F.4.6 Applicants by domicile and number of applications made : UK

Difference between cycle and 2017 cycle

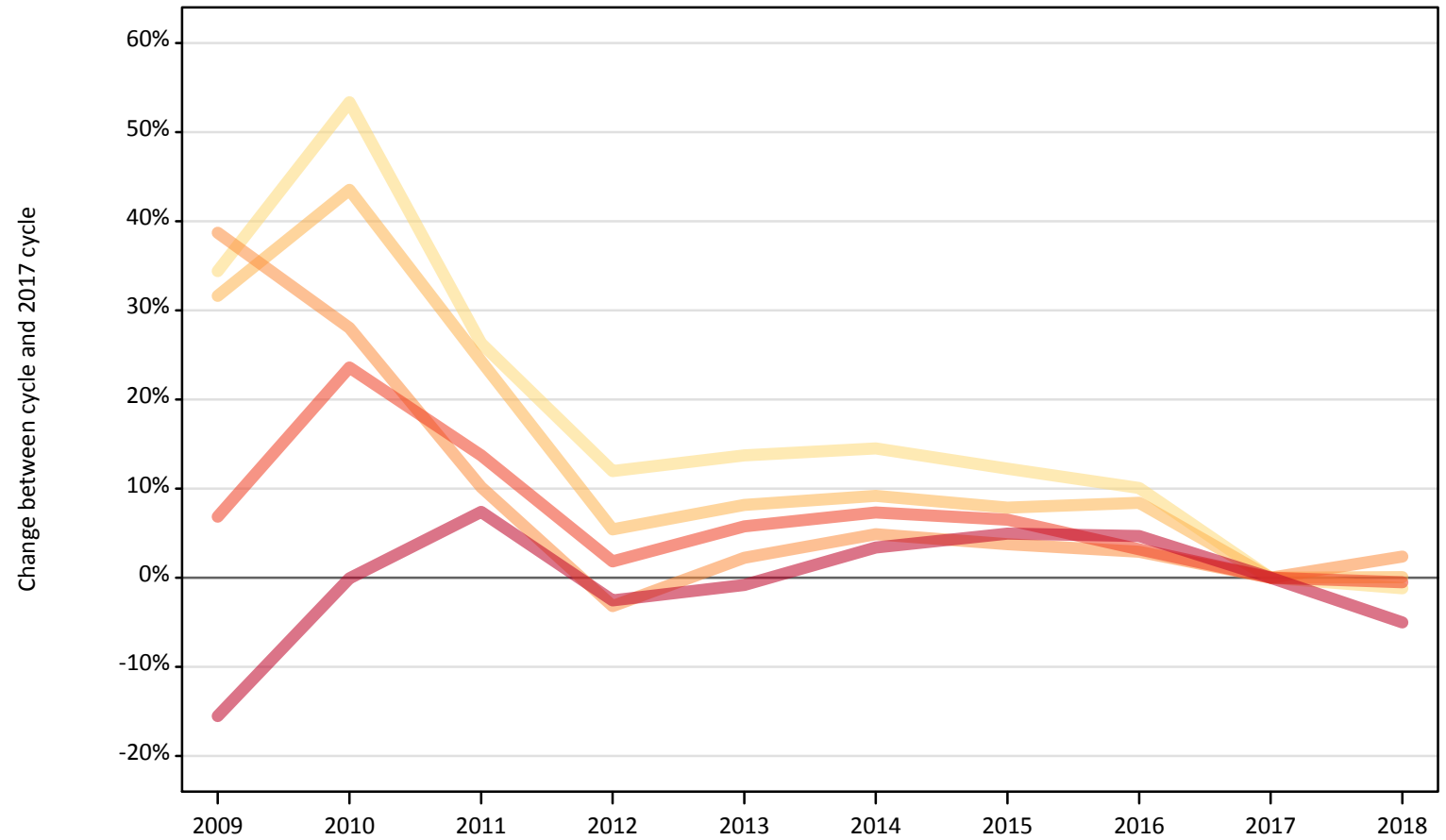
Domicile and number of applications made by applicant		2009	2010	2011	2012	2013	2014	2015	2016	2017	2018
UK	1 application	27%	48%	23%	9%	11%	12%	11%	9%	0%	-0%
	2 applications	24%	37%	20%	3%	4%	4%	7%	7%	0%	1%
	3 applications	31%	23%	7%	-5%	-0%	1%	3%	3%	0%	2%
	4 applications	4%	21%	12%	1%	4%	5%	6%	3%	0%	-1%
	5 applications	-18%	-3%	5%	-3%	-2%	2%	4%	4%	0%	-5%
	All	-8%	6%	8%	-2%	0%	3%	5%	5%	0%	-3%

Note: The percentage change is not recorded in the above table for groups with fewer than 10 applicants in that cycle or in the 2017 cycle.

F.4.7 Applicants by domicile and number of applications made : England

Difference between cycle and 2017 cycle

- 1 application
- 2 applications
- 3 applications
- 4 applications
- 5 applications



Note: The percentage change is not plotted in the above chart for groups with fewer than 500 applications in any one cycle.

F.4.8 Applicants by domicile and number of applications made : England

Domicile and number of applications made by applicant		2009	2010	2011	2012	2013	2014	2015	2016	2017	2018
England	1 application	40,620	46,340	38,170	33,840	34,370	34,610	33,920	33,260	30,220	29,870
	2 applications	18,200	19,840	17,180	14,580	14,960	15,100	14,920	14,990	13,830	13,840
	3 applications	27,760	25,630	22,050	19,380	20,470	21,000	20,770	20,600	20,020	20,490
	4 applications	38,500	44,530	40,980	36,700	38,120	38,680	38,380	37,180	36,030	35,850
	5 applications	260,530	308,270	331,200	300,610	305,910	318,870	323,720	322,910	308,410	292,940
	All	385,600	444,620	449,580	405,110	413,820	428,250	431,700	428,940	408,500	392,990

F.4.9 Applicants by domicile and number of applications made : England

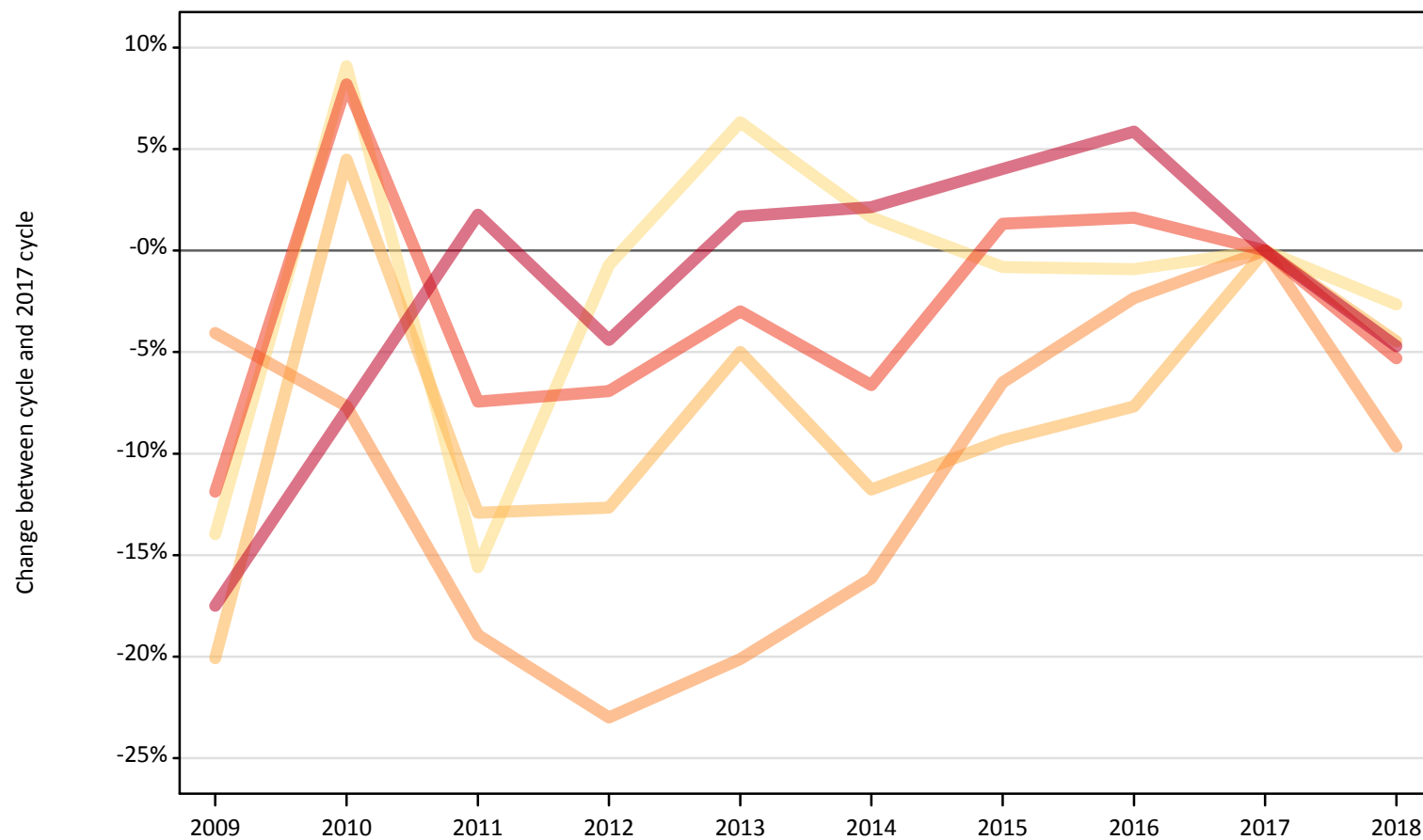
Difference between cycle and 2017 cycle

Domicile and number of applications made by applicant		2009	2010	2011	2012	2013	2014	2015	2016	2017	2018
England	1 application	34%	53%	26%	12%	14%	15%	12%	10%	0%	-1%
	2 applications	32%	44%	24%	5%	8%	9%	8%	8%	0%	0%
	3 applications	39%	28%	10%	-3%	2%	5%	4%	3%	0%	2%
	4 applications	7%	24%	14%	2%	6%	7%	7%	3%	0%	-1%
	5 applications	-16%	-0%	7%	-3%	-1%	3%	5%	5%	0%	-5%
	All	-6%	9%	10%	-1%	1%	5%	6%	5%	0%	-4%

Note: The percentage change is not recorded in the above table for groups with fewer than 10 applicants in that cycle or in the 2017 cycle.

F.4.10 Applicants by domicile and number of applications made : Northern Ireland
Difference between cycle and 2017 cycle

- 1 application
- 2 applications
- 3 applications
- 4 applications
- 5 applications



Note: The percentage change is not plotted in the above chart for groups with fewer than 500 applications in any one cycle.

F.4.11 Applicants by domicile and number of applications made : Northern Ireland

Domicile and number of applications made by applicant		2009	2010	2011	2012	2013	2014	2015	2016	2017	2018
Northern Ireland	1 application	840	1,070	830	970	1,040	1,000	970	970	980	960
	2 applications	630	820	680	680	740	690	710	720	780	750
	3 applications	1,060	1,020	900	850	890	930	1,040	1,080	1,110	1,000
	4 applications	1,530	1,880	1,610	1,620	1,680	1,620	1,760	1,760	1,740	1,640
	5 applications	12,660	14,140	15,620	14,670	15,600	15,670	15,960	16,240	15,350	14,620
	All	16,720	18,930	19,630	18,800	19,960	19,910	20,440	20,780	19,950	18,970

F.4.12 Applicants by domicile and number of applications made : Northern Ireland

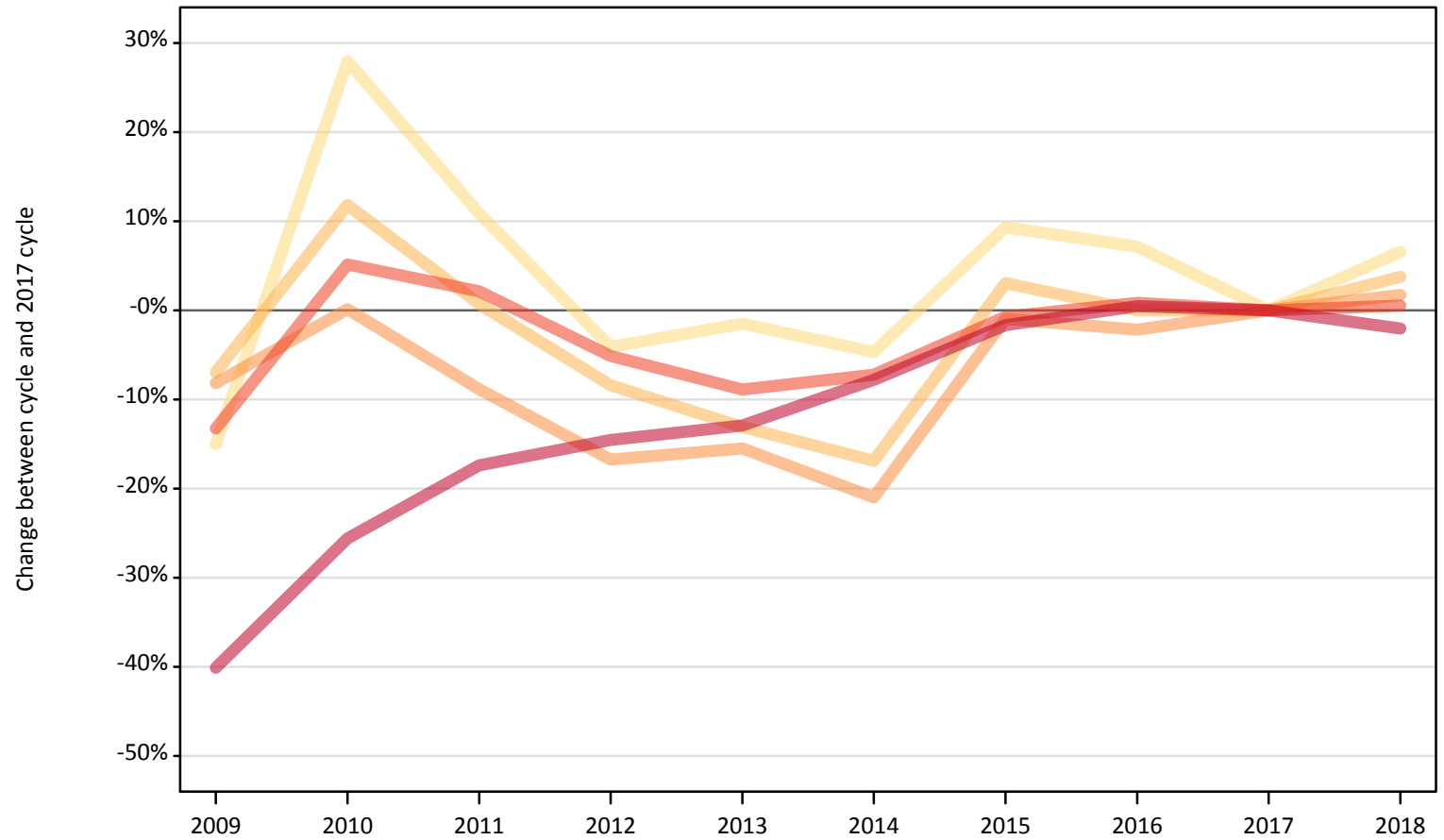
Difference between cycle and 2017 cycle

Domicile and number of applications made by applicant		2009	2010	2011	2012	2013	2014	2015	2016	2017	2018
Northern Ireland	1 application	-14%	9%	-16%	-1%	6%	2%	-1%	-1%	0%	-3%
	2 applications	-20%	4%	-13%	-13%	-5%	-12%	-9%	-8%	0%	-4%
	3 applications	-4%	-8%	-19%	-23%	-20%	-16%	-6%	-2%	0%	-10%
	4 applications	-12%	8%	-7%	-7%	-3%	-7%	1%	2%	0%	-5%
	5 applications	-17%	-8%	2%	-4%	2%	2%	4%	6%	0%	-5%
	All	-16%	-5%	-2%	-6%	0%	-0%	2%	4%	0%	-5%

Note: The percentage change is not recorded in the above table for groups with fewer than 10 applicants in that cycle or in the 2017 cycle.

F.4.13 Applicants by domicile and number of applications made : Scotland
Difference between cycle and 2017 cycle

- 1 application
- 2 applications
- 3 applications
- 4 applications
- 5 applications



Note: The percentage change is not plotted in the above chart for groups with fewer than 500 applications in any one cycle.

F.4.14 Applicants by domicile and number of applications made : Scotland

Domicile and number of applications made by applicant		2009	2010	2011	2012	2013	2014	2015	2016	2017	2018
Scotland	1 application	3,990	6,000	5,200	4,500	4,620	4,470	5,130	5,030	4,690	5,000
	2 applications	2,770	3,330	3,000	2,730	2,590	2,480	3,070	2,980	2,980	3,090
	3 applications	3,670	4,010	3,650	3,330	3,380	3,160	3,960	3,910	4,000	4,070
	4 applications	4,420	5,360	5,200	4,830	4,640	4,730	5,060	5,140	5,100	5,120
	5 applications	17,940	22,280	24,750	25,590	26,090	27,620	29,450	30,100	29,950	29,330
	All	32,800	40,980	41,800	40,980	41,320	42,460	46,670	47,150	46,720	46,620

F.4.15 Applicants by domicile and number of applications made : Scotland

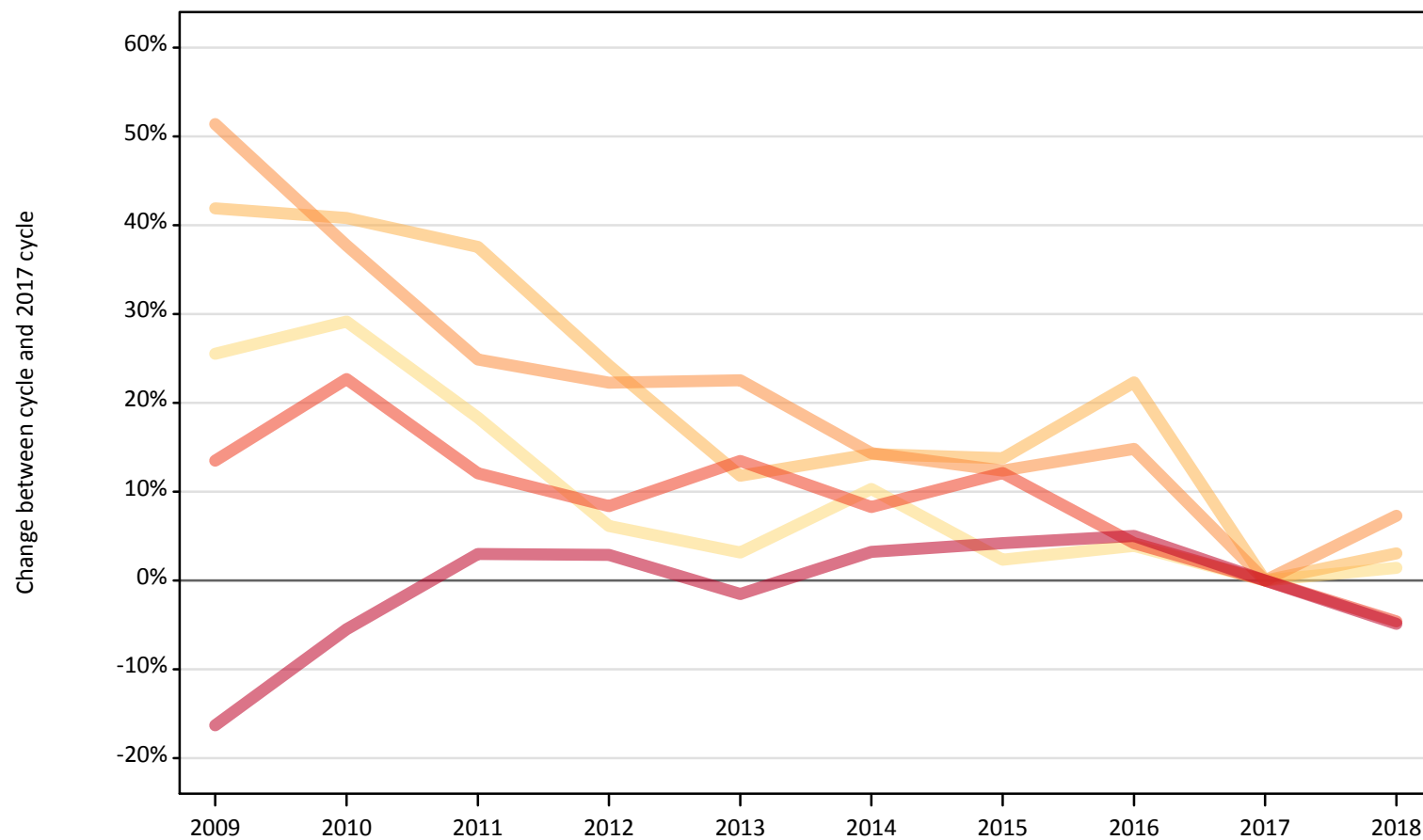
Difference between cycle and 2017 cycle

Domicile and number of applications made by applicant		2009	2010	2011	2012	2013	2014	2015	2016	2017	2018
Scotland	1 application	-15%	28%	11%	-4%	-1%	-5%	9%	7%	0%	7%
	2 applications	-7%	12%	1%	-8%	-13%	-17%	3%	0%	0%	4%
	3 applications	-8%	0%	-9%	-17%	-16%	-21%	-1%	-2%	0%	2%
	4 applications	-13%	5%	2%	-5%	-9%	-7%	-1%	1%	0%	1%
	5 applications	-40%	-26%	-17%	-15%	-13%	-8%	-2%	0%	0%	-2%
	All	-30%	-12%	-11%	-12%	-12%	-9%	-0%	1%	0%	-0%

Note: The percentage change is not recorded in the above table for groups with fewer than 10 applicants in that cycle or in the 2017 cycle.

F.4.16 Applicants by domicile and number of applications made : Wales
Difference between cycle and 2017 cycle

- 1 application
- 2 applications
- 3 applications
- 4 applications
- 5 applications



Note: The percentage change is not plotted in the above chart for groups with fewer than 500 applications in any one cycle.

F.4.17 Applicants by domicile and number of applications made : Wales

Domicile and number of applications made by applicant		2009	2010	2011	2012	2013	2014	2015	2016	2017	2018
Wales	1 application	2,740	2,820	2,590	2,320	2,250	2,410	2,240	2,270	2,190	2,220
	2 applications	1,440	1,430	1,400	1,260	1,140	1,160	1,160	1,240	1,020	1,050
	3 applications	2,150	1,960	1,780	1,740	1,740	1,630	1,600	1,630	1,420	1,530
	4 applications	2,630	2,850	2,600	2,510	2,630	2,510	2,600	2,420	2,320	2,210
	5 applications	11,630	13,130	14,310	14,290	13,680	14,340	14,480	14,590	13,890	13,220
	All	20,600	22,190	22,670	22,130	21,450	22,050	22,070	22,160	20,840	20,220

F.4.18 Applicants by domicile and number of applications made : Wales

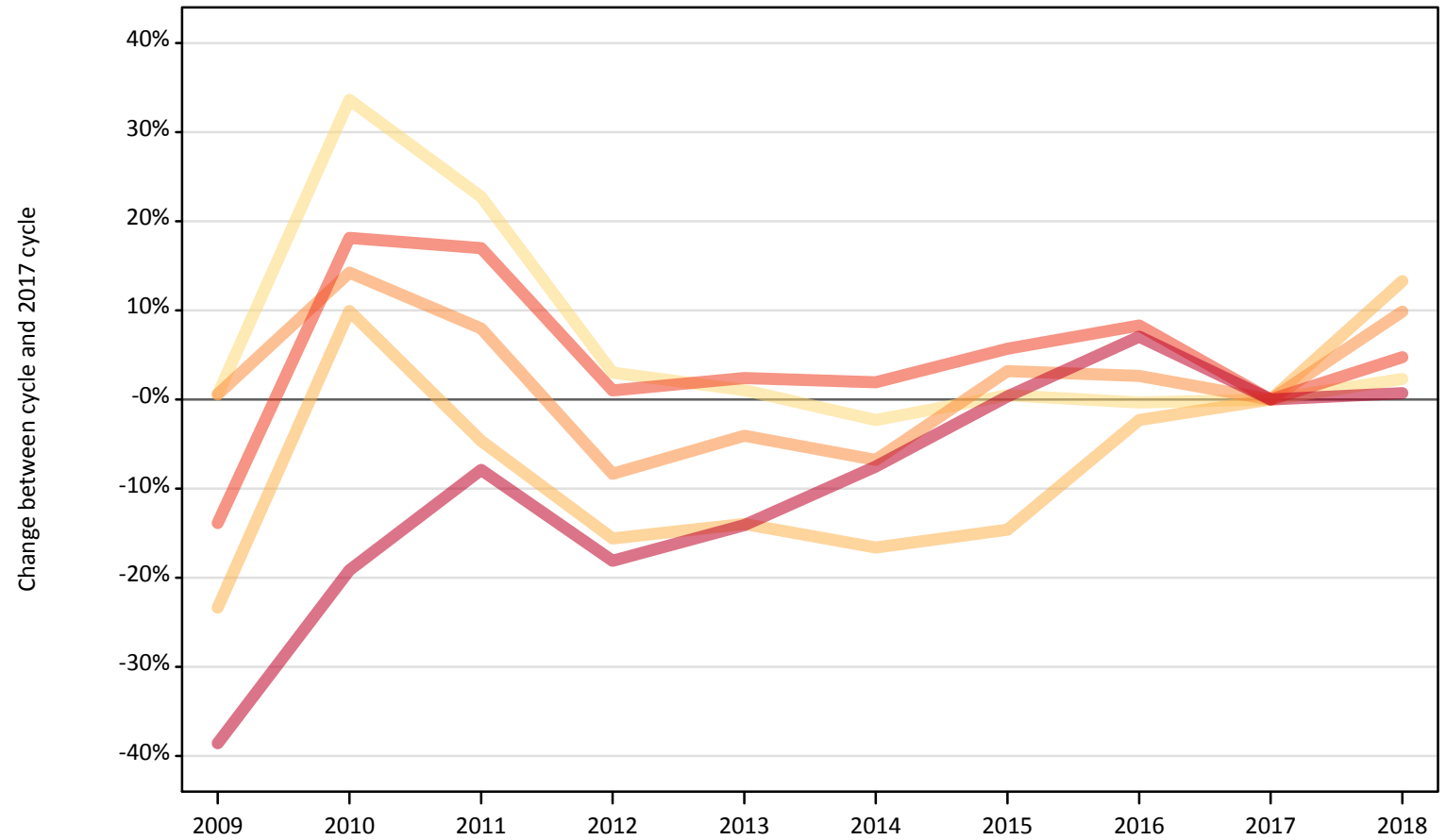
Difference between cycle and 2017 cycle

Domicile and number of applications made by applicant		2009	2010	2011	2012	2013	2014	2015	2016	2017	2018
Wales	1 application	26%	29%	18%	6%	3%	10%	2%	4%	0%	1%
	2 applications	42%	41%	38%	24%	12%	14%	14%	22%	0%	3%
	3 applications	51%	38%	25%	22%	23%	14%	12%	15%	0%	7%
	4 applications	13%	23%	12%	8%	13%	8%	12%	4%	0%	-5%
	5 applications	-16%	-5%	3%	3%	-2%	3%	4%	5%	0%	-5%
	All	-1%	6%	9%	6%	3%	6%	6%	6%	6%	0%

Note: The percentage change is not recorded in the above table for groups with fewer than 10 applicants in that cycle or in the 2017 cycle.

F.4.19 Applicants by domicile and number of applications made : EU (excluding UK)
Difference between cycle and 2017 cycle

- 1 application
- 2 applications
- 3 applications
- 4 applications
- 5 applications



Note: The percentage change is not plotted in the above chart for groups with fewer than 500 applications in any one cycle.

F.4.20 Applicants by domicile and number of applications made : EU (excluding UK)

Domicile and number of applications made by applicant		2009	2010	2011	2012	2013	2014	2015	2016	2017	2018
EU (excluding UK)	1 application	3,450	4,580	4,210	3,530	3,460	3,350	3,440	3,420	3,430	3,510
	2 applications	1,330	1,910	1,660	1,470	1,500	1,450	1,490	1,700	1,740	1,970
	3 applications	1,860	2,110	2,000	1,690	1,770	1,720	1,910	1,900	1,850	2,030
	4 applications	2,830	3,880	3,840	3,320	3,360	3,350	3,470	3,560	3,280	3,440
	5 applications	21,400	28,170	32,090	28,530	29,930	32,220	34,960	37,300	34,840	35,090
	All	30,870	40,650	43,800	38,540	40,030	42,090	45,270	47,870	45,140	46,040

F.4.21 Applicants by domicile and number of applications made : EU (excluding UK)

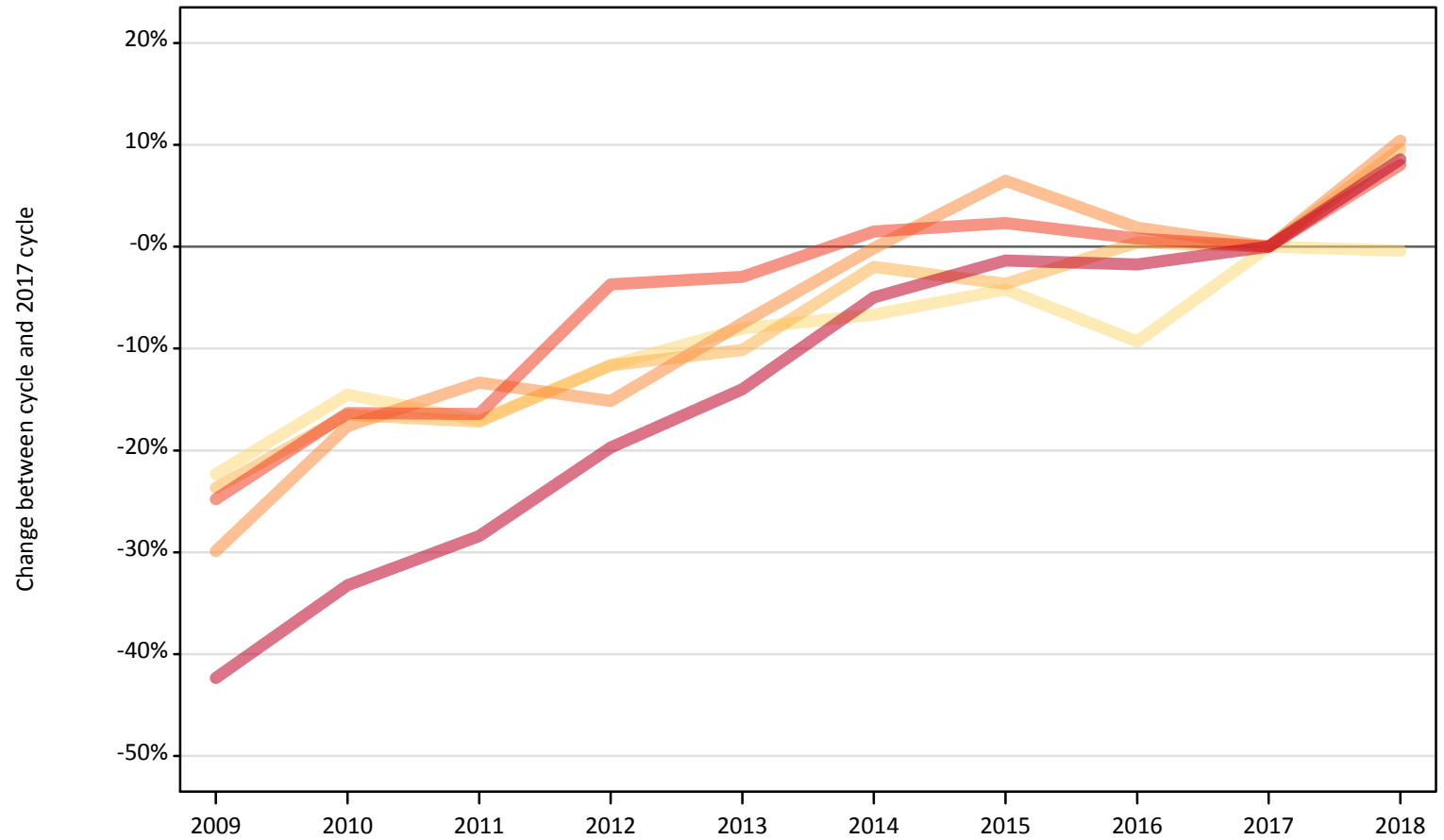
Difference between cycle and 2017 cycle

Domicile and number of applications made by applicant		2009	2010	2011	2012	2013	2014	2015	2016	2017	2018
EU (excluding UK)	1 application	1%	34%	23%	3%	1%	-2%	0%	-0%	0%	2%
	2 applications	-23%	10%	-5%	-16%	-14%	-17%	-15%	-2%	0%	13%
	3 applications	1%	14%	8%	-8%	-4%	-7%	3%	3%	0%	10%
	4 applications	-14%	18%	17%	1%	2%	2%	6%	8%	0%	5%
	5 applications	-39%	-19%	-8%	-18%	-14%	-8%	0%	7%	0%	1%
	All	-32%	-10%	-3%	-15%	-11%	-7%	0%	6%	0%	2%

Note: The percentage change is not recorded in the above table for groups with fewer than 10 applicants in that cycle or in the 2017 cycle.

F.4.22 Applicants by domicile and number of applications made : Not EU
Difference between cycle and 2017 cycle

- 1 application
- 2 applications
- 3 applications
- 4 applications
- 5 applications



Note: The percentage change is not plotted in the above chart for groups with fewer than 500 applications in any one cycle.

F.4.23 Applicants by domicile and number of applications made : Not EU

Domicile and number of applications made by applicant		2009	2010	2011	2012	2013	2014	2015	2016	2017	2018
Not EU	1 application	3,710	4,080	3,960	4,220	4,400	4,460	4,580	4,330	4,780	4,760
	2 applications	1,420	1,560	1,550	1,650	1,680	1,830	1,800	1,870	1,870	2,040
	3 applications	1,870	2,190	2,310	2,260	2,460	2,660	2,830	2,710	2,660	2,940
	4 applications	3,380	3,760	3,760	4,330	4,360	4,560	4,600	4,530	4,500	4,860
	5 applications	27,010	31,270	33,530	37,600	40,280	44,490	46,200	46,010	46,830	50,840
	All	37,390	42,860	45,110	50,060	53,180	58,000	60,000	59,460	60,630	65,440

F.4.24 Applicants by domicile and number of applications made : Not EU

Difference between cycle and 2017 cycle

Domicile and number of applications made by applicant		2009	2010	2011	2012	2013	2014	2015	2016	2017	2018
Not EU	1 application	-22%	-15%	-17%	-12%	-8%	-7%	-4%	-9%	0%	-0%
	2 applications	-24%	-17%	-17%	-12%	-10%	-2%	-4%	0%	0%	10%
	3 applications	-30%	-18%	-13%	-15%	-7%	-0%	6%	2%	0%	10%
	4 applications	-25%	-16%	-16%	-4%	-3%	1%	2%	1%	0%	8%
	5 applications	-42%	-33%	-28%	-20%	-14%	-5%	-1%	-2%	0%	9%
	All	-38%	-29%	-26%	-17%	-12%	-4%	-1%	-2%	0%	8%

Note: The percentage change is not recorded in the above table for groups with fewer than 10 applicants in that cycle or in the 2017 cycle.

F.4.25 Technical notes and definitions

Applicants have been able to submit applications for all 2018 courses since early September.

Applicants who submit their applications to UCAS by the January deadline are considered 'on time' applicants for the large majority of courses offered through UCAS. Some art and design courses have a later deadline of 24 March. Almost all main scheme applications have been received by the 24 March deadline.

This statistical release covers all Main Scheme applicants who submit their applications to UCAS by the March deadline, including those who have applied for courses with a 15 October or January deadline. Counts of RPAs (records of prior acceptance) are not included.

Counts of the number of applicants reported have been rounded to the nearest 10 applicants, this may result in instances where totals do not equal the sum of the components. Proportional changes have been rounded to the nearest whole percentage point.

In 2009, the Canary Islands classification changed from Not EU to EU (excluding UK). In order to present an accurate time series, the Canary Islands have been consistently classified as EU (excluding UK). This will result in differences with data published prior to 2010.

Age

This statistical release uses country-specific age definitions which align with the cut off points for school/college cohorts within the different administrations of the UK. For England and Wales ages are defined on the 31 August, for Northern Ireland on the 1 July and for Scotland on the 28 February the following year. Defining ages in this way matches the assignment of children to school cohorts. For applicants outside of the UK the cohort cut off for England and Wales has been used.

Applicant

A person who has made an application in the UCAS system during the cycle reported (including applications for deferred entry). Records of prior acceptance (RPAs) are excluded.

Application

An application to a course at a provider made by an applicant in the UCAS main scheme. Applicants may make up to five main scheme applications.

Country of provider

An applicant may be counted once for each provider country they have applied to in the main scheme. If an applicant has applied to providers in multiple countries then the applicant is counted once within each country of provider applied to.

Domicile

Declared area of permanent residence. The Channel Islands and the Isle of Man have been assigned as 'Not EU'.

Ethnic group

High level grouping of ethnic origin as declared by the applicant: 'Asian', 'Black', 'Mixed', 'White', 'Other', 'Unknown'.

First time applicant

An applicant that did not apply to the UCAS scheme in the previous cycle.

Main scheme

The main UCAS application scheme through which up to five providers/courses can be applied to. This opens in September and closes to new applications on 30 June the following year.

Reapplicant

An applicant that applied to the UCAS scheme in the previous cycle.

Sex

As declared by the applicant.

SIMD 2016

Scottish Index of Multiple Deprivation identifies small area concentrations of multiple deprivation across all of Scotland, providing a relative measure of deprivation among small areas (data zones). In this report, the SIMD 2016 has been used to group areas in each year in the times series.

POLAR3

Developed by HEFCE and classifies small areas across the UK into five groups, according to their level of young participation in HE. Each of these groups represents around 20 per cent of young people, and is ranked from quintile 1 (areas with the lowest young participation rates, considered as the most disadvantaged) to quintile 5 (highest young participation rates, considered most advantaged).

POLAR4

Developed by HEFCE and classifies small areas across the UK into five groups, according to their level of young participation in HE. Each of these groups represents around 20 per cent of young people, and is ranked from quintile 1 (areas with the lowest young participation rates, considered as the most disadvantaged) to quintile 5 (highest young participation rates, considered most advantaged). POLAR4 is the most recent version of the POLAR classification, and is available for the first time in UCAS? reporting since its launch in 2017.

Tariff Group of provider

Providers are grouped as higher, medium or lower tariff based on their average levels of attainment of their accepted applicants (summarised through UCAS Tariff points) in recent cycles. Each group of providers accounted for around a third of all UK 18 year old acceptances in recent cycles.

Subject group

The JACS3 classification used to classify courses into subject groups.