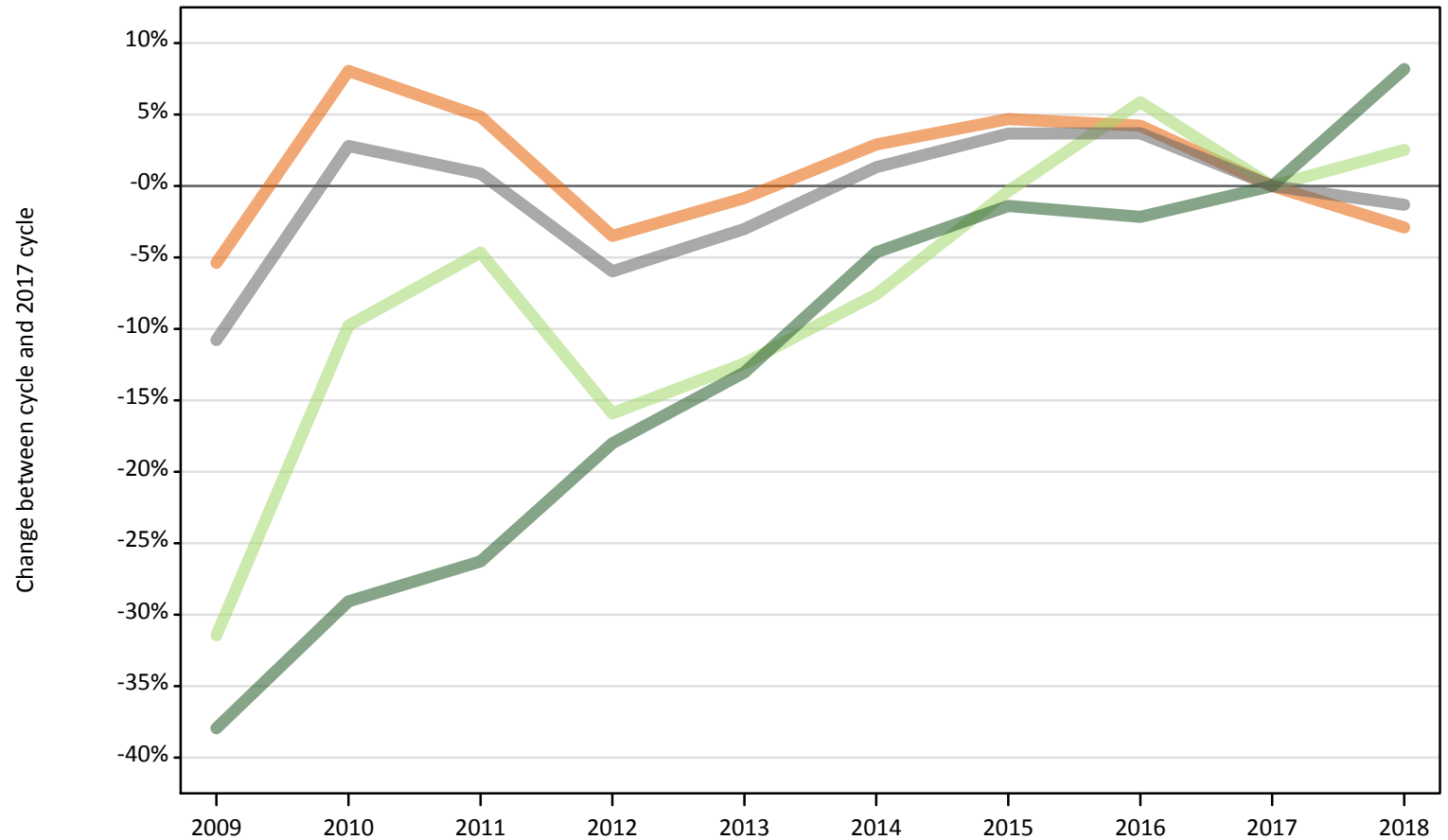


March Deadline Analysis: Reapplicants

Applicants by reapplication status at the 24 March deadline

F.3.1 First-time applicants by domicile group Difference between cycle and 2017 cycle

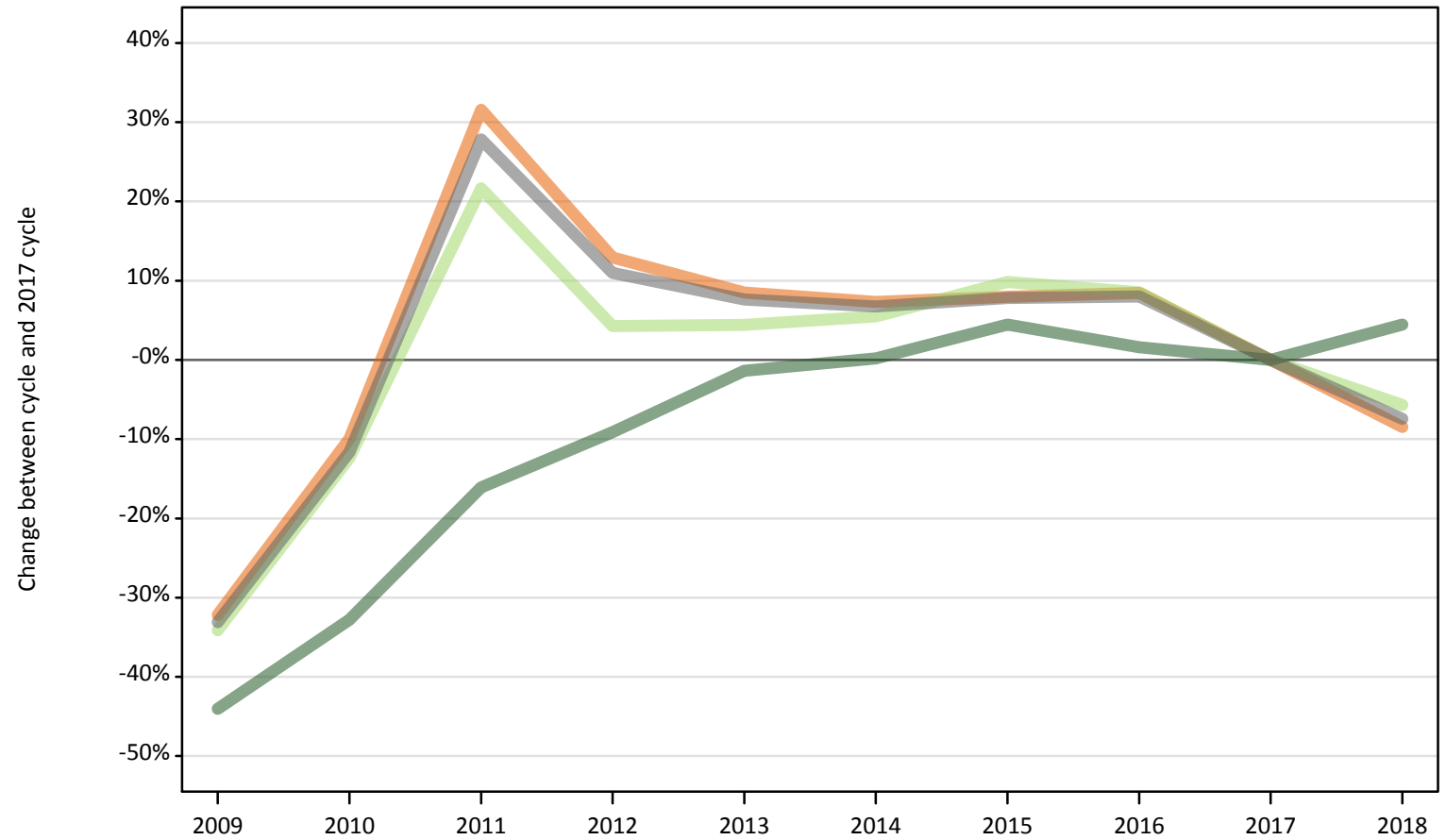
- UK
- EU (excluding UK)
- Not EU
- All domiciles



Note: The percentage change is not plotted in the above chart for groups with fewer than 500 applicants in any one cycle.

F.3.2 Reapplicants by domicile group Difference between cycle and 2017 cycle

- UK
- EU (excluding UK)
- Not EU
- All domiciles



Note: The percentage change is not plotted in the above chart for groups with fewer than 500 applicants in any one cycle.

F.3.3 Applicants by reapplication status and domicile group

| Applicant status and domicile group | | 2009 | 2010 | 2011 | 2012 | 2013 | 2014 | 2015 | 2016 | 2017 | 2018 |
|-------------------------------------|-------------------|---------|---------|---------|---------|---------|---------|---------|---------|---------|---------|
| First-time applicant | UK | 421,250 | 480,950 | 466,800 | 429,610 | 441,400 | 458,100 | 466,000 | 463,910 | 445,180 | 432,270 |
| | EU (excluding UK) | 28,960 | 38,110 | 40,270 | 35,520 | 37,000 | 39,030 | 42,090 | 44,720 | 42,240 | 43,310 |
| | Not EU | 35,190 | 40,220 | 41,810 | 46,480 | 49,300 | 54,060 | 55,890 | 55,460 | 56,690 | 61,330 |
| | All domiciles | 485,400 | 559,280 | 548,870 | 511,620 | 527,700 | 551,190 | 563,990 | 564,090 | 544,110 | 536,910 |
| Reapplicant | UK | 34,470 | 45,770 | 66,880 | 57,400 | 55,140 | 54,560 | 54,870 | 55,130 | 50,830 | 46,520 |
| | EU (excluding UK) | 1,910 | 2,540 | 3,520 | 3,020 | 3,030 | 3,060 | 3,180 | 3,140 | 2,900 | 2,730 |
| | Not EU | 2,200 | 2,640 | 3,300 | 3,570 | 3,880 | 3,940 | 4,110 | 4,000 | 3,930 | 4,110 |
| | All domiciles | 38,580 | 50,950 | 73,710 | 64,000 | 62,050 | 61,560 | 62,170 | 62,270 | 57,660 | 53,360 |
| All | UK | 455,720 | 526,710 | 533,680 | 487,020 | 496,550 | 512,660 | 520,880 | 519,030 | 496,010 | 478,800 |
| | EU (excluding UK) | 30,870 | 40,650 | 43,800 | 38,540 | 40,030 | 42,090 | 45,270 | 47,870 | 45,140 | 46,040 |
| | Not EU | 37,390 | 42,860 | 45,110 | 50,060 | 53,180 | 58,000 | 60,000 | 59,460 | 60,630 | 65,440 |
| | All domiciles | 523,990 | 610,230 | 622,580 | 575,620 | 589,750 | 612,750 | 626,150 | 626,360 | 601,770 | 590,270 |

F.3.4 Applicants by reapplication status and domicile group

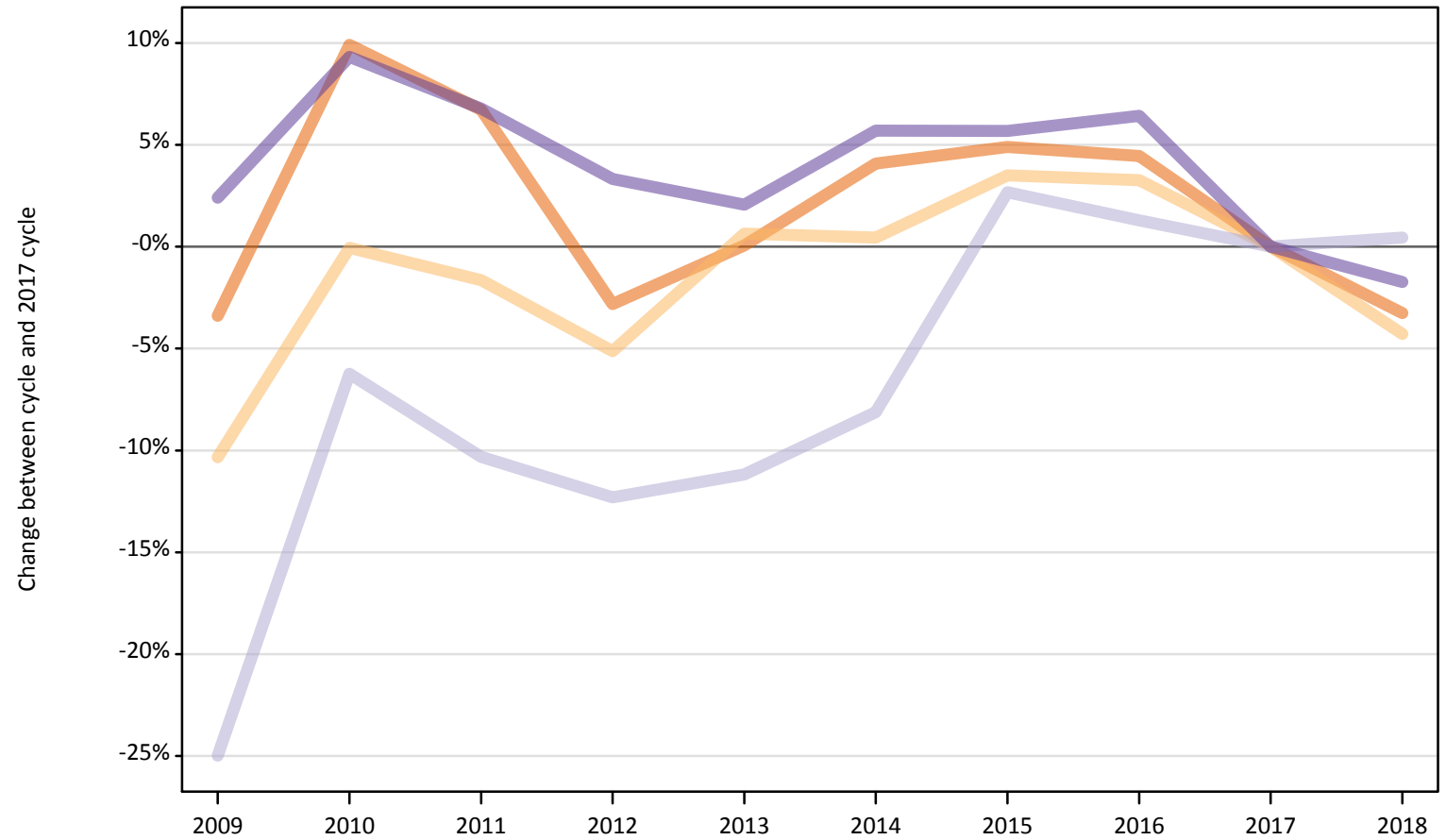
Difference between cycle and 2017 cycle

| Applicant status and domicile group | | 2009 | 2010 | 2011 | 2012 | 2013 | 2014 | 2015 | 2016 | 2017 | 2018 |
|-------------------------------------|-------------------|------|------|------|------|------|------|------|------|------|------|
| First-time applicant | UK | -5% | 8% | 5% | -3% | -1% | 3% | 5% | 4% | 0% | -3% |
| | EU (excluding UK) | -31% | -10% | -5% | -16% | -12% | -8% | -0% | 6% | 0% | 3% |
| | Not EU | -38% | -29% | -26% | -18% | -13% | -5% | -1% | -2% | 0% | 8% |
| | All domiciles | -11% | 3% | 1% | -6% | -3% | 1% | 4% | 4% | 0% | -1% |
| Reapplicant | UK | -32% | -10% | 32% | 13% | 8% | 7% | 8% | 8% | 0% | -8% |
| | EU (excluding UK) | -34% | -12% | 22% | 4% | 4% | 5% | 10% | 9% | 0% | -6% |
| | Not EU | -44% | -33% | -16% | -9% | -1% | 0% | 4% | 2% | 0% | 4% |
| | All domiciles | -33% | -12% | 28% | 11% | 8% | 7% | 8% | 8% | 0% | -7% |
| All | UK | -8% | 6% | 8% | -2% | 0% | 3% | 5% | 5% | 0% | -3% |
| | EU (excluding UK) | -32% | -10% | -3% | -15% | -11% | -7% | 0% | 6% | 0% | 2% |
| | Not EU | -38% | -29% | -26% | -17% | -12% | -4% | -1% | -2% | 0% | 8% |
| | All domiciles | -13% | 1% | 3% | -4% | -2% | 2% | 4% | 4% | 0% | -2% |

Note: The percentage change is not recorded in the above table for groups with fewer than 10 applicants in that cycle or in the 2017 cycle.

F.3.5 First-time applicants by UK country of domicile Difference between cycle and 2017 cycle

- England
- Northern Ireland
- Scotland
- Wales



Note: The percentage change is not plotted in the above chart for groups with fewer than 500 applicants in any one cycle.

F.3.6 Reapplicants by UK country of domicile Difference between cycle and 2017 cycle

- England
- Northern Ireland
- Scotland
- Wales



Note: The percentage change is not plotted in the above chart for groups with fewer than 500 applicants in any one cycle.

F.3.7 Applicants by reapplication status and UK country of domicile

| Applicant status and domicile group | | 2009 | 2010 | 2011 | 2012 | 2013 | 2014 | 2015 | 2016 | 2017 | 2018 |
|-------------------------------------|------------------|---------|---------|---------|---------|---------|---------|---------|---------|---------|---------|
| First-time applicant | England | 356,070 | 405,120 | 393,360 | 358,240 | 368,810 | 383,630 | 386,660 | 385,010 | 368,590 | 356,580 |
| | Northern Ireland | 15,650 | 17,440 | 17,170 | 16,560 | 17,560 | 17,530 | 18,060 | 18,020 | 17,450 | 16,700 |
| | Scotland | 30,200 | 37,740 | 36,100 | 35,300 | 35,750 | 36,980 | 41,330 | 40,780 | 40,250 | 40,440 |
| | Wales | 19,340 | 20,650 | 20,170 | 19,520 | 19,280 | 19,960 | 19,960 | 20,100 | 18,890 | 18,560 |
| | UK | 421,250 | 480,950 | 466,800 | 429,610 | 441,400 | 458,100 | 466,000 | 463,910 | 445,180 | 432,270 |
| Reapplicant | England | 29,540 | 39,500 | 56,220 | 46,870 | 45,010 | 44,620 | 45,050 | 43,930 | 39,920 | 36,410 |
| | Northern Ireland | 1,070 | 1,490 | 2,470 | 2,240 | 2,400 | 2,380 | 2,380 | 2,760 | 2,500 | 2,270 |
| | Scotland | 2,600 | 3,240 | 5,700 | 5,680 | 5,570 | 5,470 | 5,340 | 6,380 | 6,460 | 6,180 |
| | Wales | 1,260 | 1,540 | 2,500 | 2,610 | 2,170 | 2,090 | 2,110 | 2,060 | 1,950 | 1,660 |
| | UK | 34,470 | 45,770 | 66,880 | 57,400 | 55,140 | 54,560 | 54,870 | 55,130 | 50,830 | 46,520 |
| All | England | 385,600 | 444,620 | 449,580 | 405,110 | 413,820 | 428,250 | 431,700 | 428,940 | 408,500 | 392,990 |
| | Northern Ireland | 16,720 | 18,930 | 19,630 | 18,800 | 19,960 | 19,910 | 20,440 | 20,780 | 19,950 | 18,970 |
| | Scotland | 32,800 | 40,980 | 41,800 | 40,980 | 41,320 | 42,460 | 46,670 | 47,150 | 46,720 | 46,620 |
| | Wales | 20,600 | 22,190 | 22,670 | 22,130 | 21,450 | 22,050 | 22,070 | 22,160 | 20,840 | 20,220 |
| | UK | 455,720 | 526,710 | 533,680 | 487,020 | 496,550 | 512,660 | 520,880 | 519,030 | 496,010 | 478,800 |

F.3.8 Applicants by reapplication status and UK country of domicile

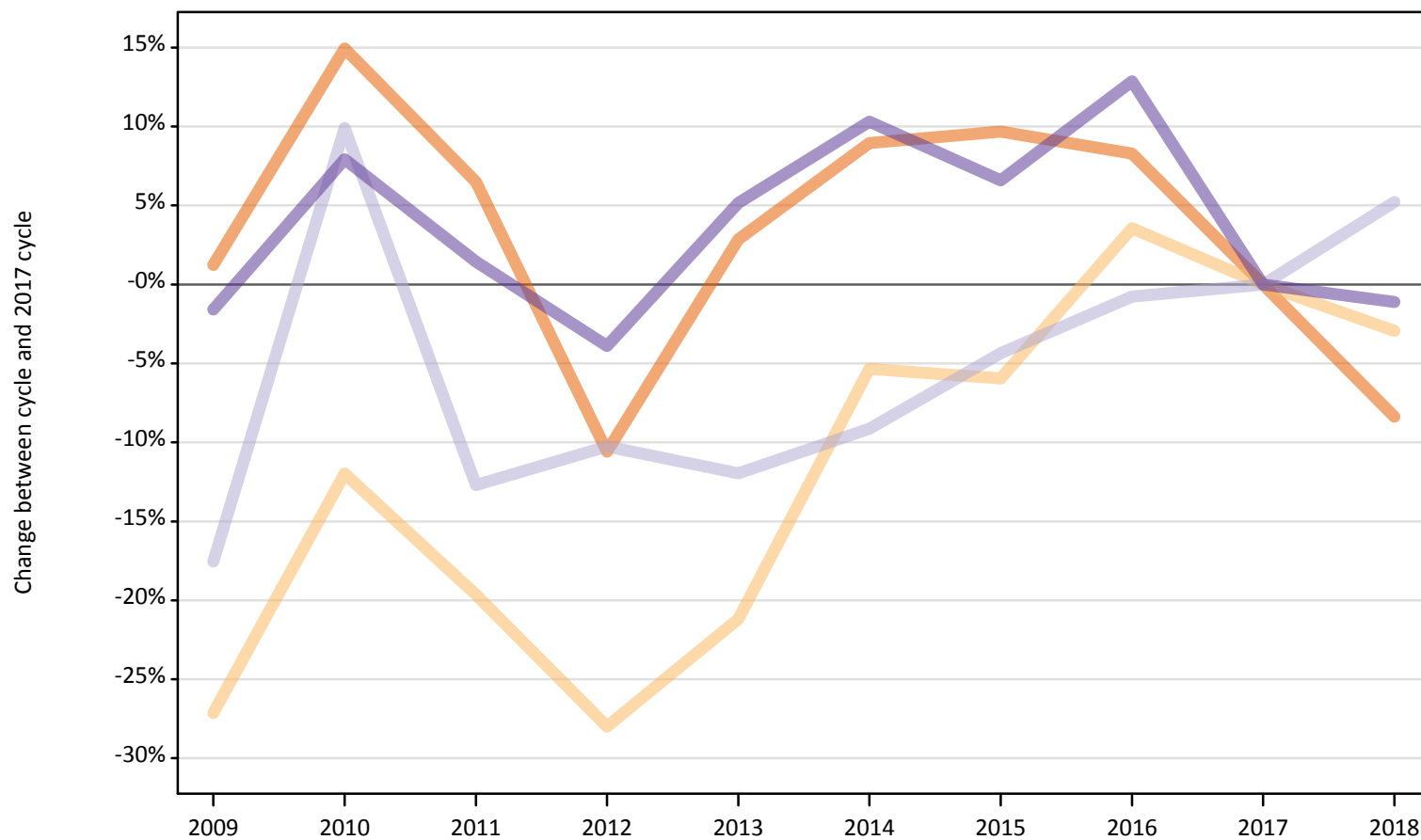
Difference between cycle and 2017 cycle

| Applicant status and domicile group | | 2009 | 2010 | 2011 | 2012 | 2013 | 2014 | 2015 | 2016 | 2017 | 2018 |
|-------------------------------------|------------------|------|------|------|------|------|------|------|------|------|------|
| First-time applicant | England | -3% | 10% | 7% | -3% | 0% | 4% | 5% | 4% | 0% | -3% |
| | Northern Ireland | -10% | -0% | -2% | -5% | 1% | 0% | 4% | 3% | 0% | -4% |
| | Scotland | -25% | -6% | -10% | -12% | -11% | -8% | 3% | 1% | 0% | 0% |
| | Wales | 2% | 9% | 7% | 3% | 2% | 6% | 6% | 6% | 0% | -2% |
| | UK | -5% | 8% | 5% | -3% | -1% | 3% | 5% | 4% | 0% | -3% |
| Reapplicant | England | -26% | -1% | 41% | 17% | 13% | 12% | 13% | 10% | 0% | -9% |
| | Northern Ireland | -57% | -41% | -1% | -11% | -4% | -5% | -5% | 10% | 0% | -9% |
| | Scotland | -60% | -50% | -12% | -12% | -14% | -15% | -17% | -1% | 0% | -4% |
| | Wales | -35% | -21% | 28% | 34% | 11% | 7% | 8% | 5% | 0% | -15% |
| | UK | -32% | -10% | 32% | 13% | 8% | 7% | 8% | 8% | 0% | -8% |
| All | England | -6% | 9% | 10% | -1% | 1% | 5% | 6% | 5% | 0% | -4% |
| | Northern Ireland | -16% | -5% | -2% | -6% | 0% | -0% | 2% | 4% | 0% | -5% |
| | Scotland | -30% | -12% | -11% | -12% | -12% | -9% | -0% | 1% | 0% | -0% |
| | Wales | -1% | 6% | 9% | 6% | 3% | 6% | 6% | 6% | 0% | -3% |
| | UK | -8% | 6% | 8% | -2% | 0% | 3% | 5% | 5% | 0% | -3% |

Note: The percentage change is not recorded in the above table for groups with fewer than 10 applicants in that cycle or in the 2017 cycle.

F.3.9 19 year old first-time applicants by UK country of domicile
Difference between cycle and 2017 cycle

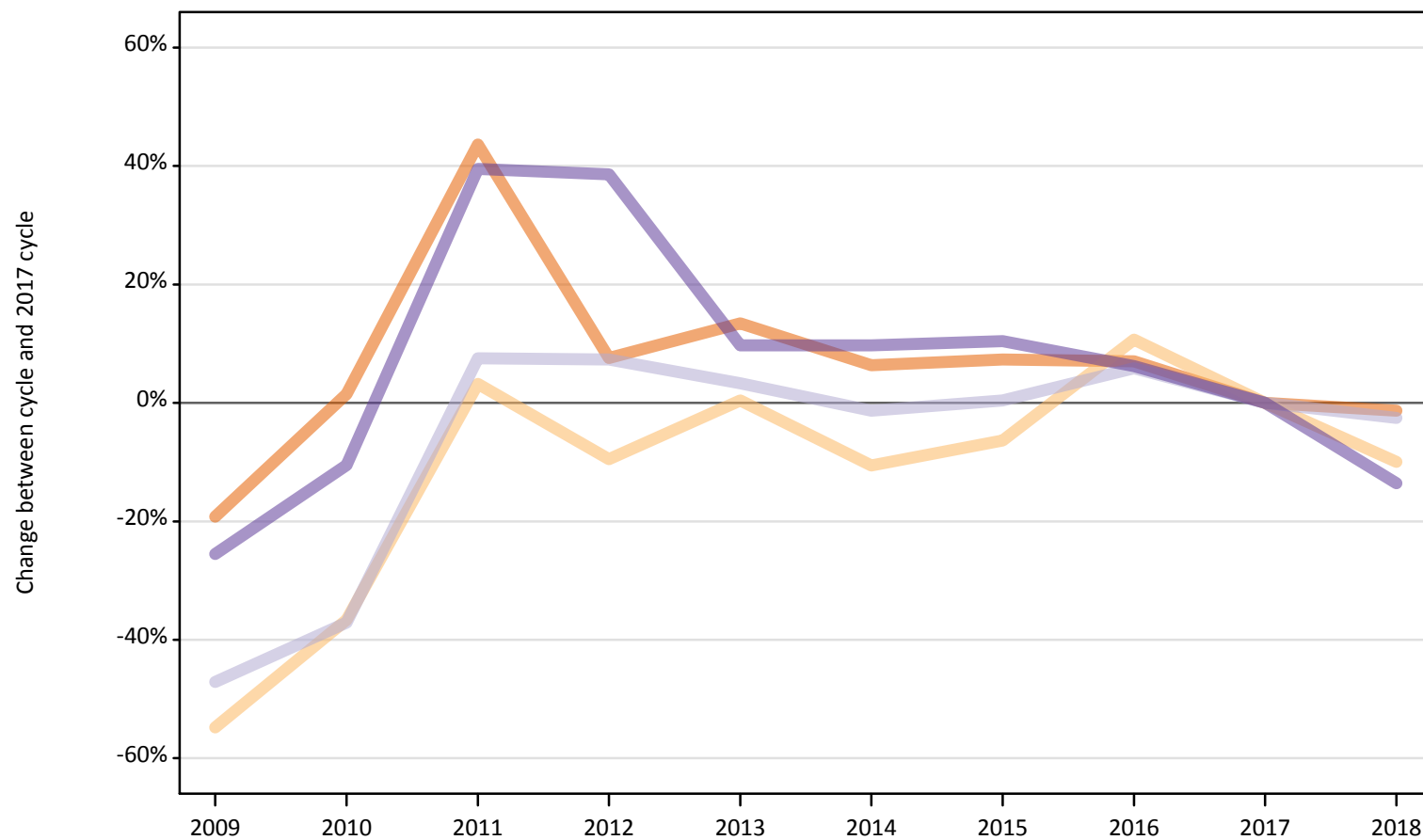
- England
- Northern Ireland
- Scotland
- Wales



Note: The percentage change is not plotted in the above chart for groups with fewer than 500 applicants in any one cycle.

F.3.10 19 year old reapplicants by UK country of domicile Difference between cycle and 2017 cycle

- England
- Northern Ireland
- Scotland
- Wales



Note: The percentage change is not plotted in the above chart for groups with fewer than 500 applicants in any one cycle.

F.3.11 19 year old applicants by reapplication status and UK country of domicile

| Applicant status and domicile group | | 2009 | 2010 | 2011 | 2012 | 2013 | 2014 | 2015 | 2016 | 2017 | 2018 |
|-------------------------------------|------------------|--------|--------|---------|--------|--------|--------|--------|--------|--------|--------|
| First-time applicant | England | 57,070 | 64,810 | 60,050 | 50,410 | 57,990 | 61,430 | 61,840 | 61,060 | 56,380 | 51,670 |
| | Northern Ireland | 1,190 | 1,430 | 1,310 | 1,170 | 1,280 | 1,540 | 1,530 | 1,690 | 1,630 | 1,580 |
| | Scotland | 2,760 | 3,680 | 2,930 | 3,010 | 2,950 | 3,050 | 3,210 | 3,330 | 3,350 | 3,530 |
| | Wales | 2,670 | 2,930 | 2,750 | 2,610 | 2,860 | 3,000 | 2,890 | 3,060 | 2,720 | 2,690 |
| | UK | 63,700 | 72,850 | 67,030 | 57,200 | 65,080 | 69,010 | 69,470 | 69,130 | 64,080 | 59,460 |
| Reapplicant | England | 17,400 | 21,850 | 30,930 | 23,160 | 24,420 | 22,900 | 23,110 | 23,040 | 21,530 | 21,250 |
| | Northern Ireland | 750 | 1,050 | 1,710 | 1,500 | 1,670 | 1,480 | 1,550 | 1,840 | 1,660 | 1,490 |
| | Scotland | 1,260 | 1,500 | 2,560 | 2,560 | 2,460 | 2,350 | 2,390 | 2,520 | 2,380 | 2,320 |
| | Wales | 730 | 880 | 1,370 | 1,360 | 1,080 | 1,080 | 1,080 | 1,040 | 980 | 850 |
| | UK | 20,140 | 25,270 | 36,560 | 28,570 | 29,620 | 27,800 | 28,140 | 28,440 | 26,550 | 25,910 |
| All | England | 74,470 | 86,650 | 90,970 | 73,570 | 82,410 | 84,320 | 84,950 | 84,100 | 77,910 | 72,920 |
| | Northern Ireland | 1,940 | 2,490 | 3,020 | 2,670 | 2,950 | 3,030 | 3,090 | 3,520 | 3,290 | 3,080 |
| | Scotland | 4,020 | 5,180 | 5,490 | 5,560 | 5,410 | 5,400 | 5,600 | 5,850 | 5,730 | 5,850 |
| | Wales | 3,400 | 3,810 | 4,120 | 3,970 | 3,930 | 4,070 | 3,980 | 4,110 | 3,700 | 3,530 |
| | UK | 83,830 | 98,130 | 103,600 | 85,770 | 94,700 | 96,820 | 97,610 | 97,570 | 90,630 | 85,370 |

F.3.12 19 year old applicants by reapplication status and UK country of domicile

Difference between cycle and 2017 cycle

| Applicant status and domicile group | | 2009 | 2010 | 2011 | 2012 | 2013 | 2014 | 2015 | 2016 | 2017 | 2018 |
|-------------------------------------|------------------|------|------|------|------|------|------|------|------|------|------|
| First-time applicant | England | 1% | 15% | 6% | -11% | 3% | 9% | 10% | 8% | 0% | -8% |
| | Northern Ireland | -27% | -12% | -20% | -28% | -21% | -5% | -6% | 4% | 0% | -3% |
| | Scotland | -18% | 10% | -13% | -10% | -12% | -9% | -4% | -1% | 0% | 5% |
| | Wales | -2% | 8% | 1% | -4% | 5% | 10% | 7% | 13% | 0% | -1% |
| | UK | -1% | 14% | 5% | -11% | 2% | 8% | 8% | 8% | 0% | -7% |
| Reapplicant | England | -19% | 1% | 44% | 8% | 13% | 6% | 7% | 7% | 0% | -1% |
| | Northern Ireland | -55% | -37% | 3% | -10% | 0% | -11% | -6% | 11% | 0% | -10% |
| | Scotland | -47% | -37% | 8% | 7% | 3% | -1% | 0% | 6% | 0% | -3% |
| | Wales | -26% | -11% | 39% | 39% | 10% | 10% | 10% | 6% | 0% | -14% |
| | UK | -24% | -5% | 38% | 8% | 12% | 5% | 6% | 7% | 0% | -2% |
| All | England | -4% | 11% | 17% | -6% | 6% | 8% | 9% | 8% | 0% | -6% |
| | Northern Ireland | -41% | -24% | -8% | -19% | -10% | -8% | -6% | 7% | 0% | -6% |
| | Scotland | -30% | -10% | -4% | -3% | -6% | -6% | -2% | 2% | 0% | 2% |
| | Wales | -8% | 3% | 12% | 7% | 6% | 10% | 8% | 11% | 0% | -4% |
| | UK | -7% | 8% | 14% | -5% | 4% | 7% | 8% | 8% | 0% | -6% |

Note: The percentage change is not recorded in the above table for groups with fewer than 10 applicants in that cycle or in the 2017 cycle.

F.3.13 Technical notes and definitions

Applicants have been able to submit applications for all 2018 courses since early September.

Applicants who submit their applications to UCAS by the January deadline are considered 'on time' applicants for the large majority of courses offered through UCAS. Some art and design courses have a later deadline of 24 March. Almost all main scheme applications have been received by the 24 March deadline.

This statistical release covers all Main Scheme applicants who submit their applications to UCAS by the March deadline, including those who have applied for courses with a 15 October or January deadline. Counts of RPAs (records of prior acceptance) are not included.

Counts of the number of applicants reported have been rounded to the nearest 10 applicants, this may result in instances where totals do not equal the sum of the components. Proportional changes have been rounded to the nearest whole percentage point.

In 2009, the Canary Islands classification changed from Not EU to EU (excluding UK). In order to present an accurate time series, the Canary Islands have been consistently classified as EU (excluding UK). This will result in differences with data published prior to 2010.

Age

This statistical release uses country-specific age definitions which align with the cut off points for school/college cohorts within the different administrations of the UK. For England and Wales ages are defined on the 31 August, for Northern Ireland on the 1 July and for Scotland on the 28 February the following year. Defining ages in this way matches the assignment of children to school cohorts. For applicants outside of the UK the cohort cut off for England and Wales has been used.

Applicant

A person who has made an application in the UCAS system during the cycle reported (including applications for deferred entry). Records of prior acceptance (RPAs) are excluded.

Application

An application to a course at a provider made by an applicant in the UCAS main scheme. Applicants may make up to five main scheme applications.

Country of provider

An applicant may be counted once for each provider country they have applied to in the main scheme. If an applicant has applied to providers in multiple countries then the applicant is counted once within each country of provider applied to.

Domicile

Declared area of permanent residence. The Channel Islands and the Isle of Man have been assigned as 'Not EU'.

Ethnic group

High level grouping of ethnic origin as declared by the applicant: 'Asian', 'Black', 'Mixed', 'White', 'Other', 'Unknown'.

First time applicant

An applicant that did not apply to the UCAS scheme in the previous cycle.

Main scheme

The main UCAS application scheme through which up to five providers/courses can be applied to. This opens in September and closes to new applications on 30 June the following year.

Reapplicant

An applicant that applied to the UCAS scheme in the previous cycle.

Sex

As declared by the applicant.

SIMD 2016

Scottish Index of Multiple Deprivation identifies small area concentrations of multiple deprivation across all of Scotland, providing a relative measure of deprivation among small areas (data zones). In this report, the SIMD 2016 has been used to group areas in each year in the times series.

POLAR3

Developed by HEFCE and classifies small areas across the UK into five groups, according to their level of young participation in HE. Each of these groups represents around 20 per cent of young people, and is ranked from quintile 1 (areas with the lowest young participation rates, considered as the most disadvantaged) to quintile 5 (highest young participation rates, considered most advantaged).

POLAR4

Developed by HEFCE and classifies small areas across the UK into five groups, according to their level of young participation in HE. Each of these groups represents around 20 per cent of young people, and is ranked from quintile 1 (areas with the lowest young participation rates, considered as the most disadvantaged) to quintile 5 (highest young participation rates, considered most advantaged). POLAR4 is the most recent version of the POLAR classification, and is available for the first time in UCAS? reporting since its launch in 2017.

Tariff Group of provider

Providers are grouped as higher, medium or lower tariff based on their average levels of attainment of their accepted applicants (summarised through UCAS Tariff points) in recent cycles. Each group of providers accounted for around a third of all UK 18 year old acceptances in recent cycles.

Subject group

The JACS3 classification used to classify courses into subject groups.