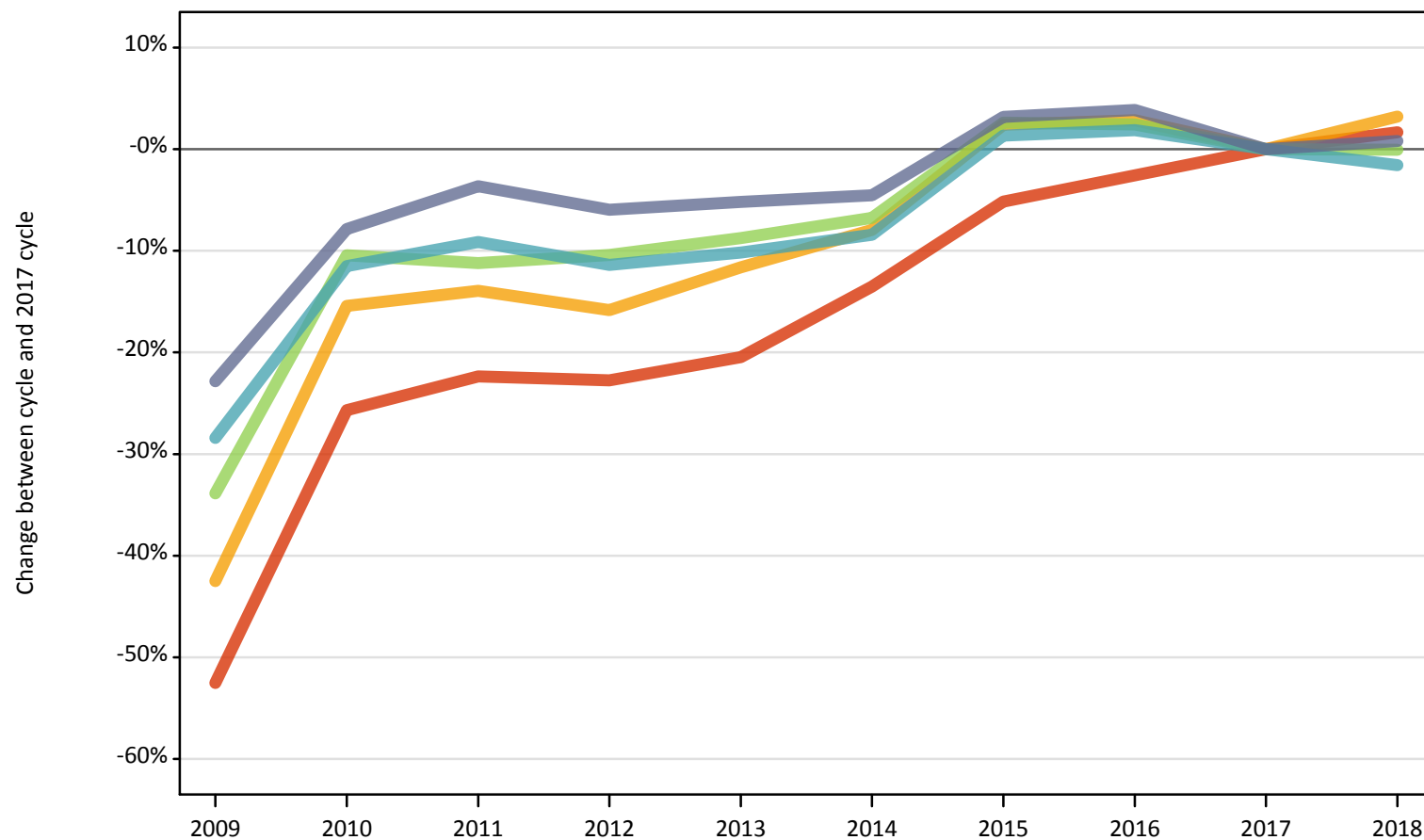


January Deadline Analysis: SIMD quintile

Applicants by SIMD quintile 2016, age and sex at the 15 January deadline

D.13.1 Applicants by SIMD quintile 2016: Scottish domiciled applicants Difference between cycle and 2017 cycle

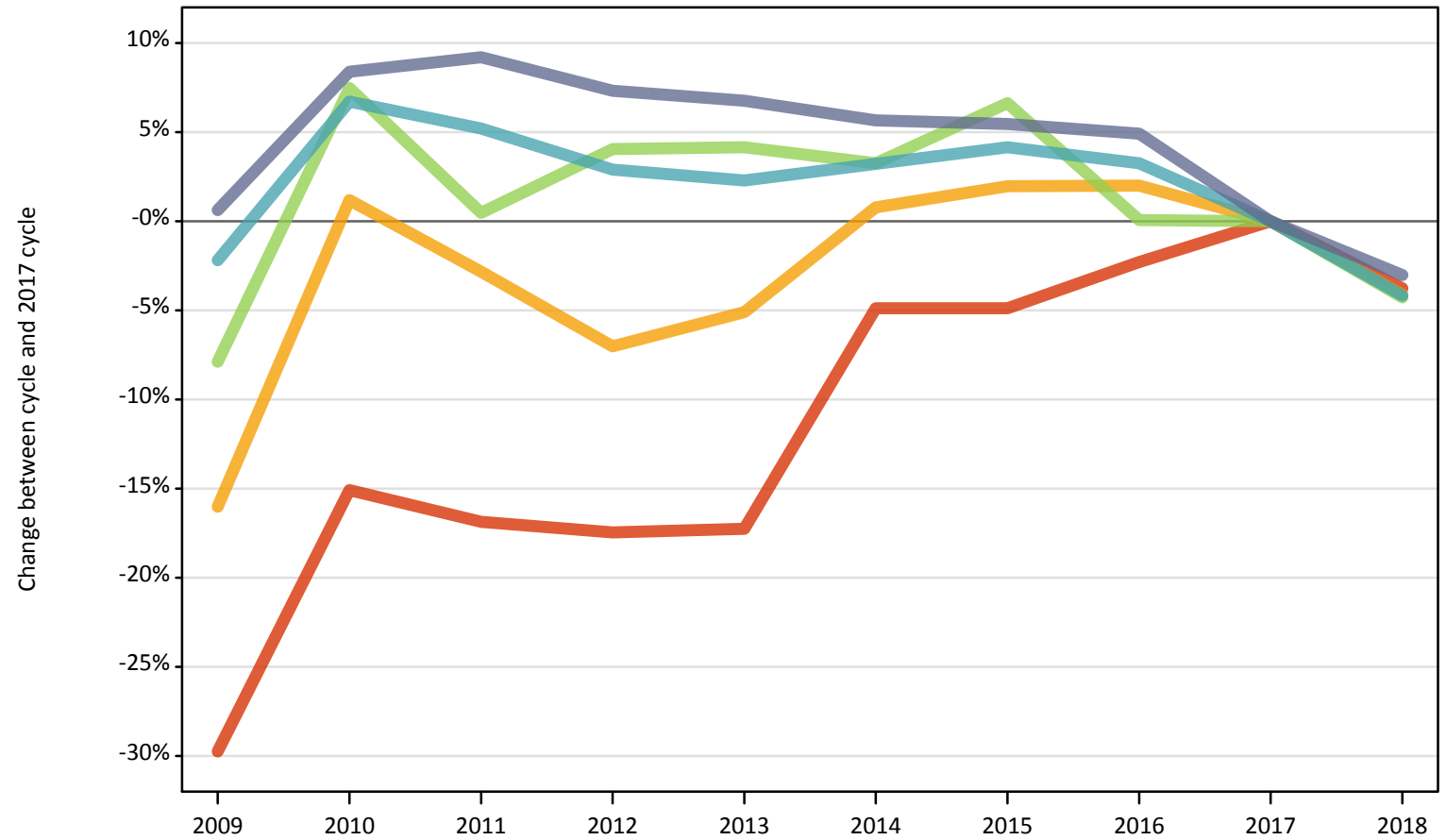
- Quintile 1
- Quintile 2
- Quintile 3
- Quintile 4
- Quintile 5



Note: The percentage change is not plotted in the above charts for groups with fewer than 500 applicants in any one cycle.

D.13.2 18 year old applicants by SIMD quintile 2016: Scottish domiciled applicants
Difference between cycle and 2017 cycle

- Quintile 1
- Quintile 2
- Quintile 3
- Quintile 4
- Quintile 5



Note: The percentage change is not plotted in the above charts for groups with fewer than 500 applicants in any one cycle.

D.13.3 Applicants by age and SIMD quintile 2016: Scottish domiciled applicants

Age group and SIMD quintile 2016		2009	2010	2011	2012	2013	2014	2015	2016	2017	2018
Under 18	Quintile 1	60	90	70	70	60	70	70	70	80	70
	Quintile 2	100	120	100	90	100	80	100	90	100	120
	Quintile 3	200	190	150	150	140	140	130	150	150	130
	Quintile 4	230	230	250	210	150	170	180	200	190	180
	Quintile 5	300	290	300	260	220	200	220	210	220	230
18	Quintile 1	1,380	1,670	1,640	1,630	1,630	1,870	1,870	1,930	1,970	1,900
	Quintile 2	2,140	2,580	2,480	2,370	2,420	2,570	2,600	2,600	2,550	2,440
	Quintile 3	3,170	3,700	3,460	3,580	3,580	3,550	3,670	3,440	3,440	3,290
	Quintile 4	4,460	4,860	4,790	4,690	4,660	4,700	4,750	4,700	4,560	4,370
	Quintile 5	6,230	6,710	6,760	6,640	6,610	6,540	6,530	6,500	6,190	6,000
19	Quintile 1	310	470	530	510	510	520	500	550	560	580
	Quintile 2	410	690	700	730	710	680	700	730	690	700
	Quintile 3	640	970	1,010	1,000	980	1,010	990	1,120	1,020	1,030
	Quintile 4	930	1,220	1,260	1,330	1,300	1,330	1,420	1,410	1,440	1,420
	Quintile 5	1,160	1,530	1,710	1,760	1,740	1,720	1,820	1,890	1,810	1,950
20 and over	Quintile 1	1,470	2,800	3,030	3,040	3,200	3,400	3,990	4,060	4,170	4,340
	Quintile 2	1,380	2,540	2,750	2,710	2,970	3,130	3,780	3,800	3,670	3,980
	Quintile 3	1,480	2,580	2,750	2,710	2,880	3,050	3,730	3,790	3,690	3,840
	Quintile 4	1,610	2,610	2,860	2,710	2,960	3,040	3,880	3,960	3,910	3,960
	Quintile 5	1,780	2,790	3,070	2,900	3,080	3,260	4,110	4,160	4,070	4,200
All	Quintile 1	3,220	5,040	5,260	5,240	5,390	5,860	6,430	6,600	6,780	6,890
	Quintile 2	4,030	5,930	6,030	5,900	6,200	6,450	7,180	7,210	7,010	7,230
	Quintile 3	5,490	7,440	7,370	7,440	7,580	7,740	8,520	8,500	8,300	8,300
	Quintile 4	7,220	8,930	9,160	8,940	9,060	9,240	10,220	10,280	10,090	9,930
	Quintile 5	9,480	11,320	11,840	11,550	11,650	11,730	12,670	12,760	12,280	12,380

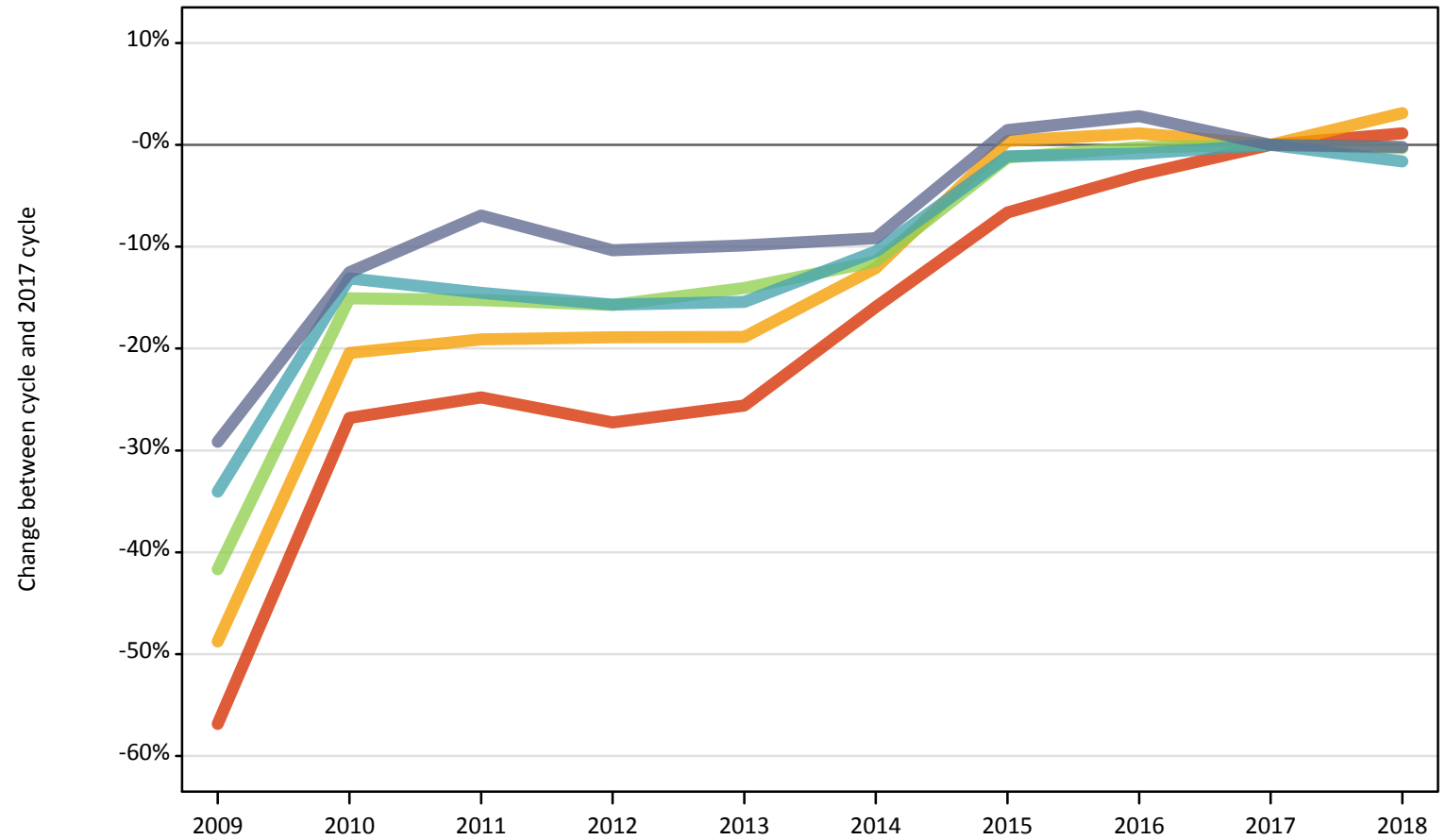
D.13.4 Applicants by age and SIMD quintile 2016: Scottish domiciled applicants

Difference between cycle and 2017 cycle

Age group and SIMD quintile 2016		2009	2010	2011	2012	2013	2014	2015	2016	2017	2018
Under 18	Quintile 1	-30%	7%	-22%	-18%	-34%	-22%	-19%	-19%	0%	-17%
	Quintile 2	1%	18%	0%	-8%	0%	-24%	-5%	-17%	0%	13%
	Quintile 3	35%	25%	3%	0%	-10%	-10%	-12%	1%	0%	-13%
	Quintile 4	24%	26%	37%	12%	-22%	-9%	-4%	9%	0%	-1%
	Quintile 5	37%	31%	35%	16%	-2%	-10%	-0%	-4%	0%	3%
18	Quintile 1	-30%	-15%	-17%	-17%	-17%	-5%	-5%	-2%	0%	-4%
	Quintile 2	-16%	1%	-3%	-7%	-5%	1%	2%	2%	0%	-4%
	Quintile 3	-8%	7%	0%	4%	4%	3%	7%	0%	0%	-4%
	Quintile 4	-2%	7%	5%	3%	2%	3%	4%	3%	0%	-4%
	Quintile 5	1%	8%	9%	7%	7%	6%	5%	5%	0%	-3%
19	Quintile 1	-45%	-15%	-5%	-9%	-9%	-6%	-11%	-2%	0%	5%
	Quintile 2	-41%	-0%	2%	6%	3%	-1%	1%	6%	0%	1%
	Quintile 3	-38%	-5%	-1%	-2%	-3%	-1%	-2%	10%	0%	1%
	Quintile 4	-35%	-15%	-13%	-8%	-10%	-8%	-1%	-2%	0%	-2%
	Quintile 5	-36%	-15%	-5%	-3%	-4%	-5%	1%	5%	0%	8%
20 and over	Quintile 1	-65%	-33%	-27%	-27%	-23%	-18%	-4%	-2%	0%	4%
	Quintile 2	-62%	-31%	-25%	-26%	-19%	-15%	3%	3%	0%	8%
	Quintile 3	-60%	-30%	-26%	-27%	-22%	-18%	1%	3%	0%	4%
	Quintile 4	-59%	-33%	-27%	-31%	-24%	-22%	-1%	1%	0%	1%
	Quintile 5	-56%	-31%	-25%	-29%	-24%	-20%	1%	2%	0%	3%
All	Quintile 1	-53%	-26%	-22%	-23%	-20%	-14%	-5%	-3%	0%	2%
	Quintile 2	-43%	-15%	-14%	-16%	-12%	-8%	2%	3%	0%	3%
	Quintile 3	-34%	-10%	-11%	-10%	-9%	-7%	3%	2%	0%	-0%
	Quintile 4	-28%	-12%	-9%	-11%	-10%	-8%	1%	2%	0%	-2%
	Quintile 5	-23%	-8%	-4%	-6%	-5%	-5%	3%	4%	0%	1%

D.13.5 Female applicants by SIMD quintile 2016: Scottish domiciled applicants
Difference between cycle and 2017 cycle

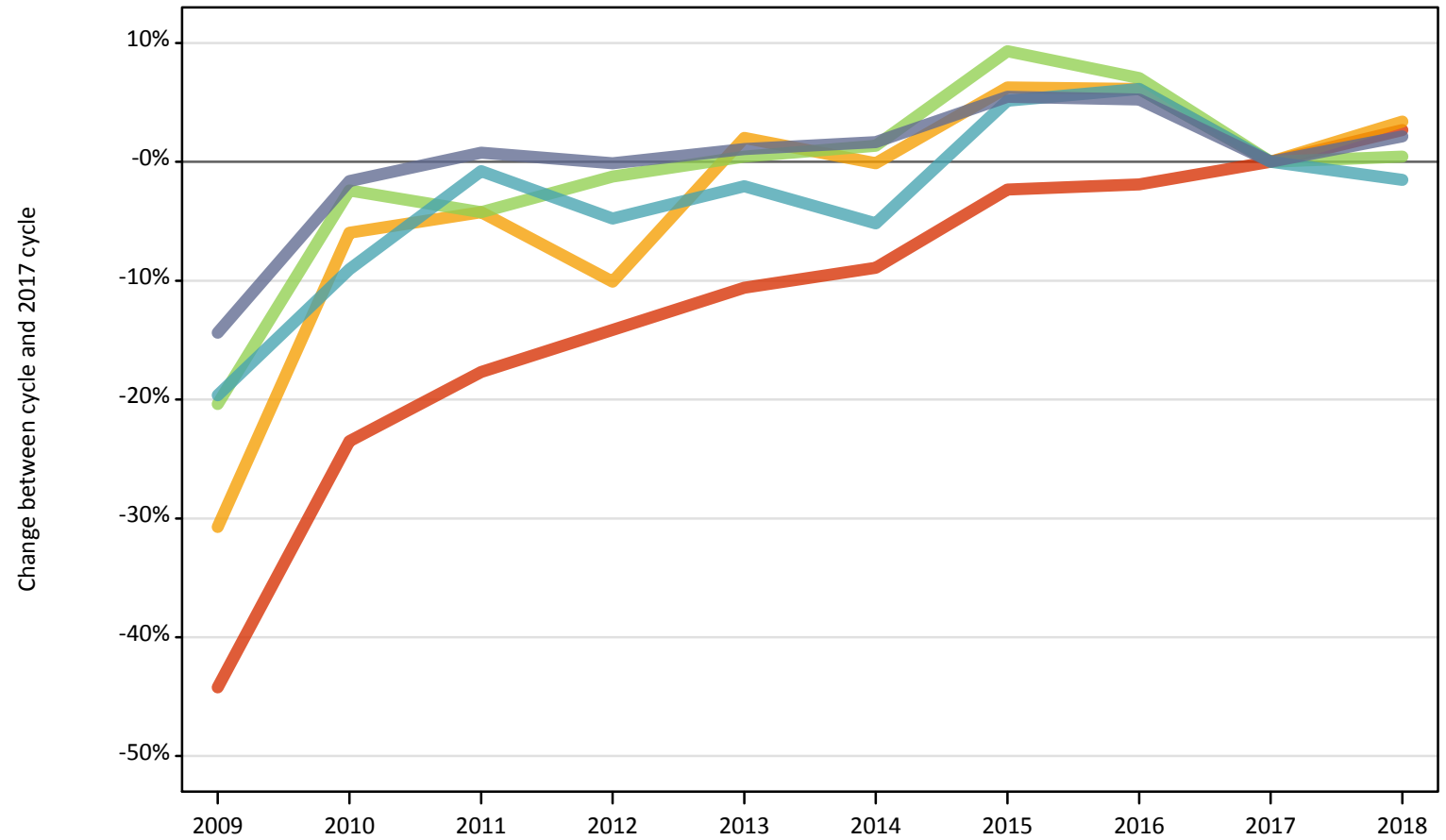
- Quintile 1
- Quintile 2
- Quintile 3
- Quintile 4
- Quintile 5



Note: The percentage change is not plotted in the above charts for groups with fewer than 500 applicants in any one cycle.

D.13.6 Male applicants by SIMD quintile 2016: Scottish domiciled applicants
Difference between cycle and 2017 cycle

- Quintile 1
- Quintile 2
- Quintile 3
- Quintile 4
- Quintile 5



Note: The percentage change is not plotted in the above charts for groups with fewer than 500 applicants in any one cycle.

D.13.7 Applicants by sex and SIMD quintile 2016: Scottish domiciled applicants

Sex and SIMD quintile 2016		2009	2010	2011	2012	2013	2014	2015	2016	2017	2018
All	Quintile 1	3,220	5,040	5,260	5,240	5,390	5,860	6,430	6,600	6,780	6,890
	Quintile 2	4,030	5,930	6,030	5,900	6,200	6,450	7,180	7,210	7,010	7,230
	Quintile 3	5,490	7,440	7,370	7,440	7,580	7,740	8,520	8,500	8,300	8,300
	Quintile 4	7,220	8,930	9,160	8,940	9,060	9,240	10,220	10,280	10,090	9,930
	Quintile 5	9,480	11,320	11,840	11,550	11,650	11,730	12,670	12,760	12,280	12,380
Female	Quintile 1	1,920	3,260	3,350	3,240	3,310	3,740	4,160	4,320	4,450	4,500
	Quintile 2	2,350	3,640	3,700	3,710	3,720	4,020	4,600	4,630	4,580	4,720
	Quintile 3	3,070	4,470	4,460	4,430	4,520	4,660	5,190	5,250	5,260	5,240
	Quintile 4	4,050	5,330	5,250	5,180	5,190	5,500	6,070	6,090	6,140	6,040
	Quintile 5	4,980	6,140	6,530	6,300	6,330	6,380	7,130	7,220	7,020	7,010
Male	Quintile 1	1,300	1,780	1,910	2,000	2,080	2,120	2,270	2,280	2,320	2,390
	Quintile 2	1,680	2,290	2,330	2,190	2,480	2,430	2,580	2,580	2,430	2,510
	Quintile 3	2,420	2,970	2,910	3,000	3,050	3,080	3,320	3,260	3,040	3,050
	Quintile 4	3,170	3,590	3,920	3,760	3,870	3,740	4,150	4,190	3,950	3,890
	Quintile 5	4,510	5,180	5,300	5,260	5,320	5,350	5,550	5,540	5,260	5,370

D.13.8 Applicants by sex and SIMD quintile 2016: Scottish domiciled applicants

Difference between cycle and 2017 cycle

Sex and SIMD quintile 2016		2009	2010	2011	2012	2013	2014	2015	2016	2017	2018
All	Quintile 1	-53%	-26%	-22%	-23%	-20%	-14%	-5%	-3%	0%	2%
	Quintile 2	-43%	-15%	-14%	-16%	-12%	-8%	2%	3%	0%	3%
	Quintile 3	-34%	-10%	-11%	-10%	-9%	-7%	3%	2%	0%	-0%
	Quintile 4	-28%	-12%	-9%	-11%	-10%	-8%	1%	2%	0%	-2%
	Quintile 5	-23%	-8%	-4%	-6%	-5%	-5%	3%	4%	0%	1%
Female	Quintile 1	-57%	-27%	-25%	-27%	-26%	-16%	-7%	-3%	0%	1%
	Quintile 2	-49%	-20%	-19%	-19%	-19%	-12%	0%	1%	0%	3%
	Quintile 3	-42%	-15%	-15%	-16%	-14%	-11%	-1%	-0%	0%	-0%
	Quintile 4	-34%	-13%	-15%	-16%	-15%	-10%	-1%	-1%	0%	-2%
	Quintile 5	-29%	-13%	-7%	-10%	-10%	-9%	1%	3%	0%	-0%
Male	Quintile 1	-44%	-24%	-18%	-14%	-11%	-9%	-2%	-2%	0%	3%
	Quintile 2	-31%	-6%	-4%	-10%	2%	-0%	6%	6%	0%	3%
	Quintile 3	-20%	-2%	-4%	-1%	0%	1%	9%	7%	0%	0%
	Quintile 4	-20%	-9%	-1%	-5%	-2%	-5%	5%	6%	0%	-2%
	Quintile 5	-14%	-2%	1%	-0%	1%	2%	5%	5%	0%	2%

D.13.9 Technical notes and definitions

Applicants have been able to submit applications for all 2018 courses since early September.

Applicants who submit their applications to UCAS by the January deadline are considered as 'on time' applicants for the large majority of courses offered through UCAS.

This statistical release covers all Main Scheme applicants who submit their applications to UCAS by the January deadline, including those who have applied for courses with a 15 October deadline. Counts of RPAs (records of prior acceptance) are not included.

Counts of the number of applicants reported have been rounded to the nearest 10 applicants, this may result in instances where totals do not equal the sum of the components. Proportional changes have been rounded to the nearest whole percentage point.

Age

This statistical release uses country-specific age definitions which align with the cut off points for school/college cohorts within the different administrations of the UK. For England and Wales ages are defined on the 31 August, for Northern Ireland on the 1 July and for Scotland on the 28 February the following year. Defining ages in this way matches the assignment of children to school cohorts. For applicants outside of the UK the cohort cut off for England and Wales has been used.

Applicant

A person who has made an application in the UCAS system during the cycle reported (including applications for deferred entry). Records of prior acceptance (RPAs) are excluded.

Application

An application to a course at a provider made by an applicant in the UCAS main scheme. Applicants may make up to five main scheme applications.

Country of provider

An applicant may be counted once for each provider country they have applied to in the main scheme. If an applicant has applied to providers in multiple countries then the applicant is counted once within each country of provider applied to.

Domicile

Declared area of permanent residence. The Channel Islands and the Isle of Man have been assigned as 'Not EU'.

Ethnic group

High level grouping of ethnic origin as declared by the applicant: 'Asian', 'Black', 'Mixed', 'White', 'Other', 'Unknown'.

First time applicant

An applicant that did not apply to the UCAS scheme in the previous cycle.

Main scheme

The main UCAS application scheme through which up to five providers/courses can be applied to. This opens in September and closes to new applications on 30 June the following year.

Reapplicant

An applicant that applied to the UCAS scheme in the previous cycle.

Sex

As declared by the applicant.

SIMD 2016

Scottish Index of Multiple Deprivation identifies small area concentrations of multiple deprivation across all of Scotland, providing a relative measure of deprivation among small areas (data zones). In this report, the SIMD 2016 has been used to group areas in each year in the times series.

POLAR3

Developed by HEFCE and classifies small areas across the UK into five groups, according to their level of young participation in HE. Each of these groups represents around 20 per cent of young people, and is ranked from quintile 1 (areas with the lowest young participation rates, considered as the most disadvantaged) to quintile 5 (highest young participation rates, considered most advantaged).

POLAR4

Developed by HEFCE and classifies small areas across the UK into five groups, according to their level of young participation in HE. Each of these groups represents around 20 per cent of young people, and is ranked from quintile 1 (areas with the lowest young participation rates, considered as the most disadvantaged) to quintile 5 (highest young participation rates, considered most advantaged). POLAR4 is the most recent version of the POLAR classification, and is available for the first time in UCAS' reporting since its launch in 2017.

Tariff Group of provider

Providers are grouped as higher, medium or lower tariff based on their average levels of attainment of their accepted applicants (summarised through UCAS Tariff points) in recent cycles. Each group of providers accounted for around a third of all UK 18 year old acceptances in recent cycles.

Subject group

The JACS3 classification used to classify courses into subject groups.