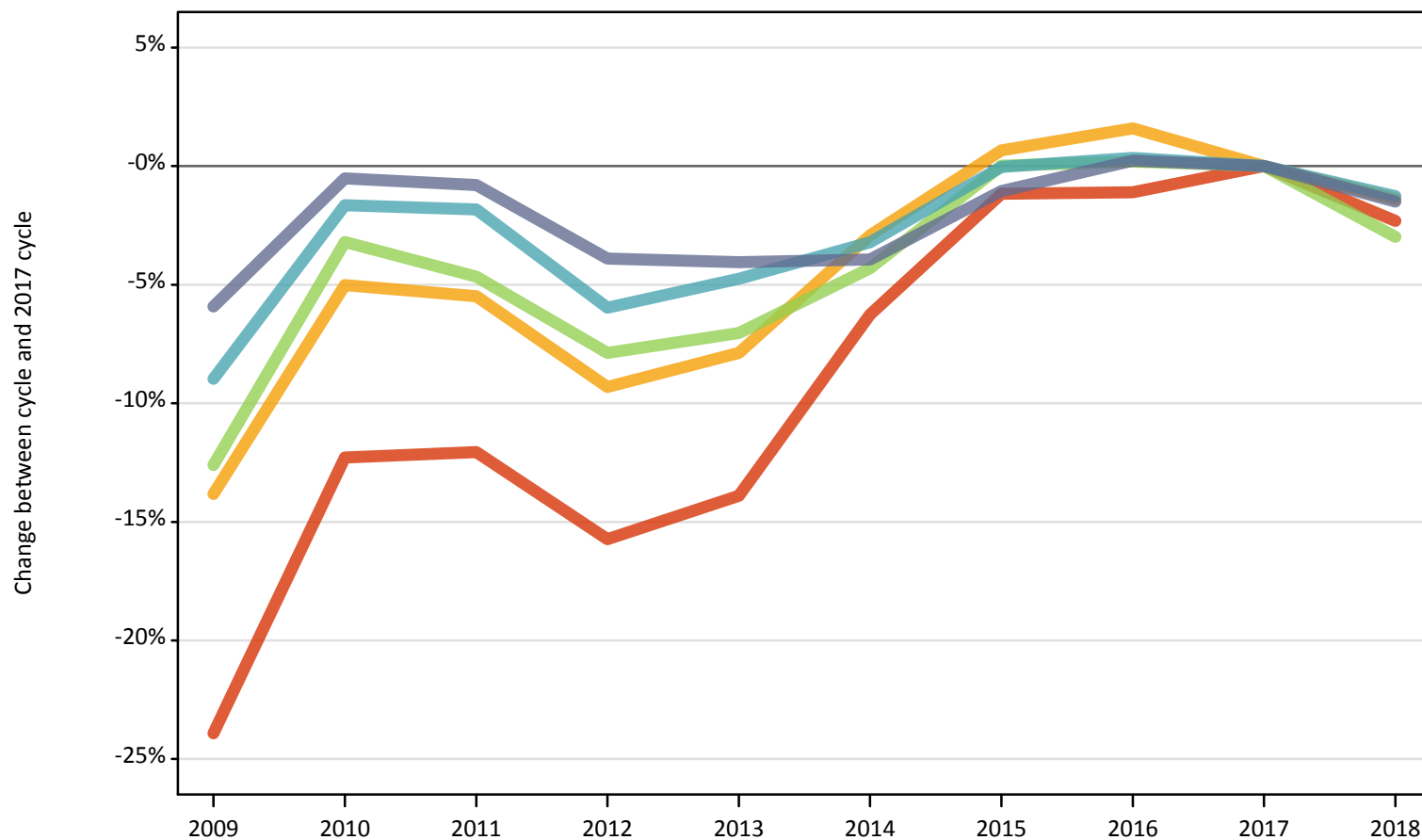


January Deadline Analysis: POLAR4 quintile

18 year old applicants by POLAR4 quintile and sex at the 15 January deadline

D.12.1 18 year old applicants by POLAR4 quintile: UK Difference between cycle and 2017 cycle

- Quintile 1
- Quintile 2
- Quintile 3
- Quintile 4
- Quintile 5



Note: The percentage change is not plotted in the above charts for groups with fewer than 500 applicants in any one cycle.

D.12.2 18 year old applicants by POLAR4 quintile: UK

POLAR4 quintile of applicant	2009	2010	2011	2012	2013	2014	2015	2016	2017	2018
Quintile 1	22,090	25,470	25,530	24,470	25,000	27,210	28,700	28,710	29,030	28,360
Quintile 2	34,690	38,240	38,050	36,510	37,090	39,080	40,530	40,900	40,260	39,700
Quintile 3	44,440	49,220	48,480	46,850	47,270	48,660	50,860	50,940	50,850	49,330
Quintile 4	56,440	60,970	60,860	58,300	59,050	60,000	61,970	62,210	61,990	61,210
Quintile 5	84,200	89,040	88,790	86,010	85,870	85,980	88,560	89,710	89,500	88,160

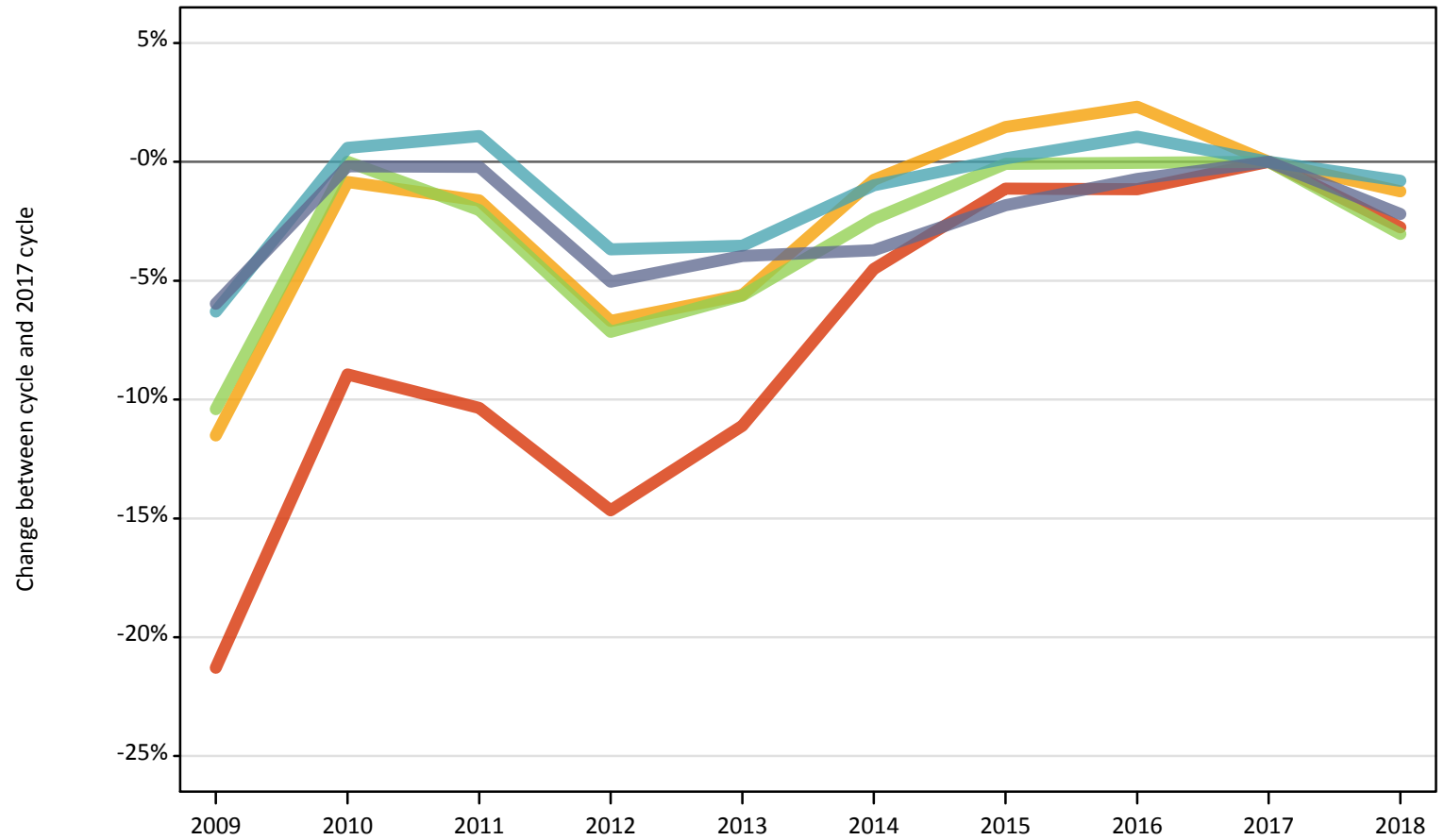
D.12.3 18 year old applicants by POLAR4 quintile: UK

Difference between cycle and 2017 cycle

POLAR4 quintile of applicant	2009	2010	2011	2012	2013	2014	2015	2016	2017	2018
Quintile 1	-24%	-12%	-12%	-16%	-14%	-6%	-1%	-1%	0%	-2%
Quintile 2	-14%	-5%	-5%	-9%	-8%	-3%	1%	2%	0%	-1%
Quintile 3	-13%	-3%	-5%	-8%	-7%	-4%	0%	0%	0%	-3%
Quintile 4	-9%	-2%	-2%	-6%	-5%	-3%	-0%	0%	0%	-1%
Quintile 5	-6%	-1%	-1%	-4%	-4%	-4%	-1%	0%	0%	-1%

D.12.4 18 year old male applicants by POLAR4 quintile: UK
Difference between cycle and 2017 cycle

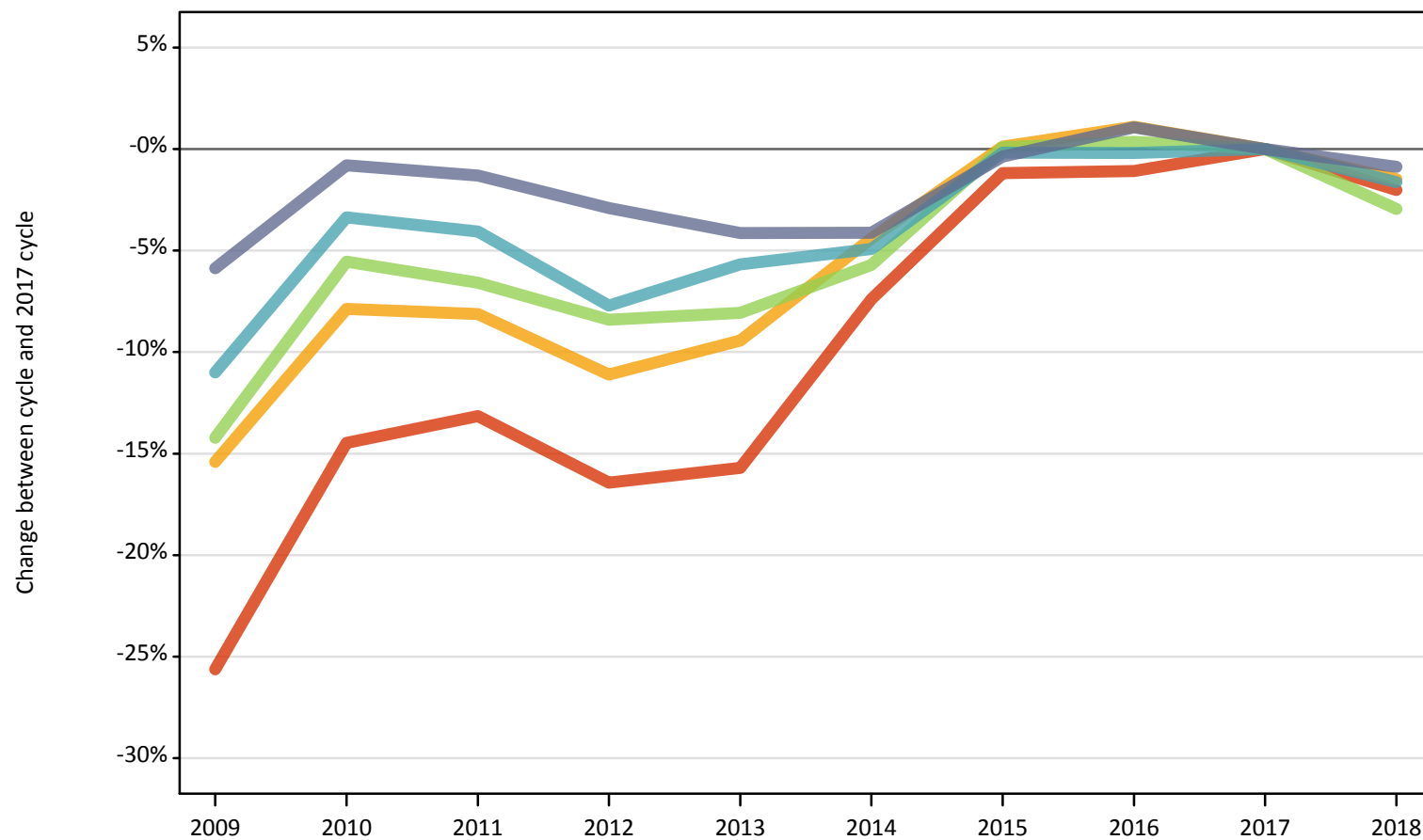
- Quintile 1
- Quintile 2
- Quintile 3
- Quintile 4
- Quintile 5



Note: The percentage change is not plotted in the above charts for groups with fewer than 500 applicants in any one cycle.

D.12.5 18 year old female applicants by POLAR4 quintile: UK
Difference between cycle and 2017 cycle

- Quintile 1
- Quintile 2
- Quintile 3
- Quintile 4
- Quintile 5



Note: The percentage change is not plotted in the above charts for groups with fewer than 500 applicants in any one cycle.

D.12.6 18 year old applicants by sex and POLAR4 quintile: UK

Sex and POLAR4 quintile of applicant		2009	2010	2011	2012	2013	2014	2015	2016	2017	2018
Female	Quintile 1	13,110	15,080	15,310	14,730	14,860	16,320	17,420	17,430	17,620	17,270
	Quintile 2	20,240	22,040	21,980	21,260	21,660	22,870	23,950	24,180	23,920	23,570
	Quintile 3	25,200	27,750	27,450	26,910	27,010	27,710	29,410	29,490	29,380	28,510
	Quintile 4	31,270	33,950	33,710	32,420	33,140	33,410	35,070	35,070	35,130	34,560
	Quintile 5	45,000	47,420	47,180	46,410	45,830	45,840	47,630	48,320	47,800	47,380
Male	Quintile 1	8,980	10,390	10,230	9,740	10,140	10,900	11,280	11,280	11,410	11,100
	Quintile 2	14,460	16,200	16,070	15,250	15,430	16,220	16,580	16,720	16,340	16,140
	Quintile 3	19,240	21,470	21,030	19,930	20,260	20,950	21,450	21,460	21,470	20,820
	Quintile 4	25,170	27,020	27,150	25,870	25,910	26,600	26,900	27,140	26,860	26,650
	Quintile 5	39,210	41,620	41,610	39,590	40,040	40,140	40,930	41,400	41,690	40,780

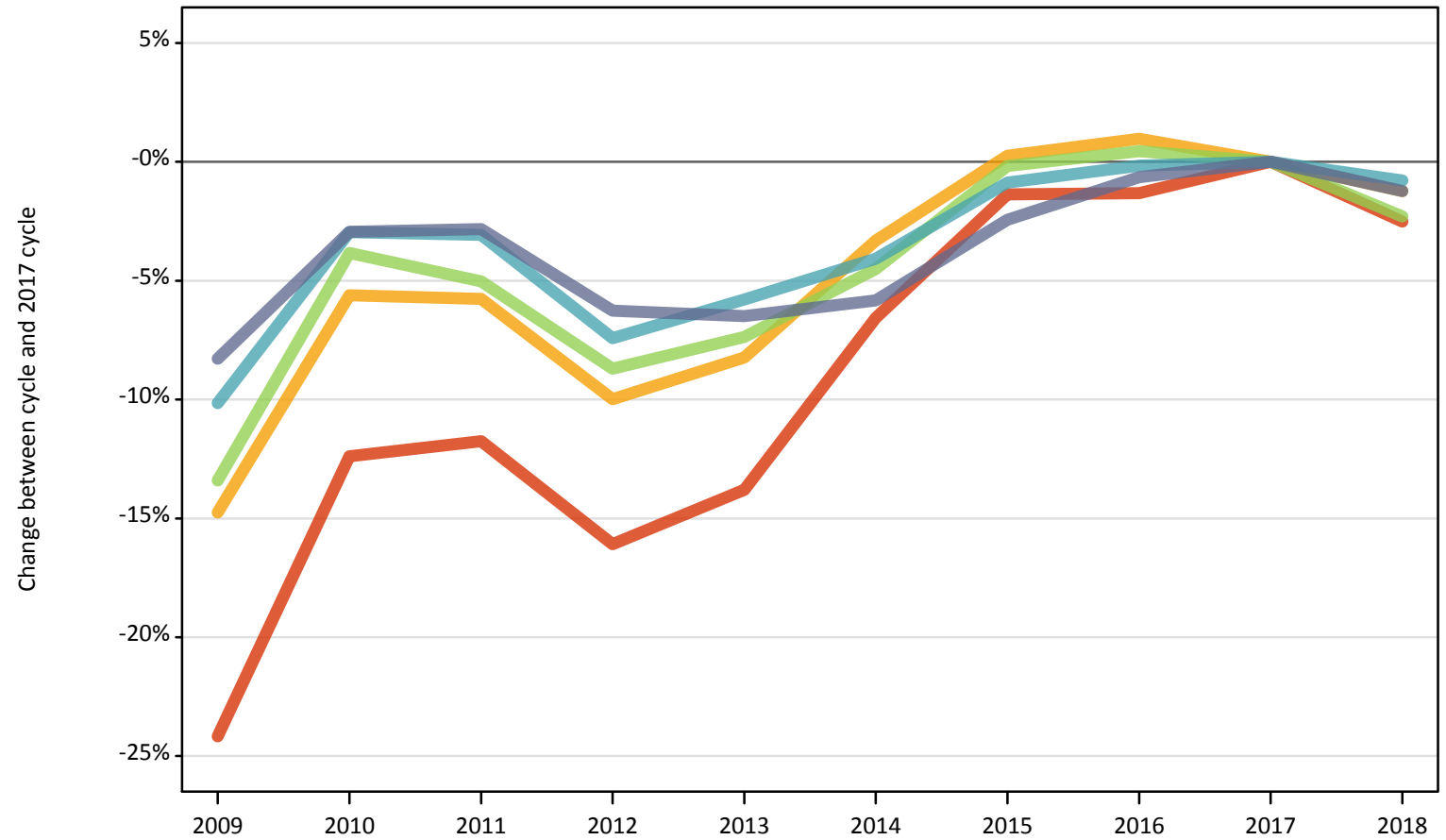
D.12.7 18 year old applicants by sex and POLAR4 quintile: UK

Difference between cycle and 2017 cycle

Sex and POLAR4 quintile of applicant		2009	2010	2011	2012	2013	2014	2015	2016	2017	2018
Female	Quintile 1	-26%	-14%	-13%	-16%	-16%	-7%	-1%	-1%	0%	-2%
	Quintile 2	-15%	-8%	-8%	-11%	-9%	-4%	0%	1%	0%	-1%
	Quintile 3	-14%	-6%	-7%	-8%	-8%	-6%	0%	0%	0%	-3%
	Quintile 4	-11%	-3%	-4%	-8%	-6%	-5%	-0%	-0%	0%	-2%
	Quintile 5	-6%	-1%	-1%	-3%	-4%	-4%	-0%	1%	0%	-1%
Male	Quintile 1	-21%	-9%	-10%	-15%	-11%	-5%	-1%	-1%	0%	-3%
	Quintile 2	-12%	-1%	-2%	-7%	-6%	-1%	1%	2%	0%	-1%
	Quintile 3	-10%	0%	-2%	-7%	-6%	-2%	-0%	-0%	0%	-3%
	Quintile 4	-6%	1%	1%	-4%	-4%	-1%	0%	1%	0%	-1%
	Quintile 5	-6%	-0%	-0%	-5%	-4%	-4%	-2%	-1%	0%	-2%

D.12.8 18 year old applicants by POLAR4 quintile: England
Difference between cycle and 2017 cycle

- Quintile 1
- Quintile 2
- Quintile 3
- Quintile 4
- Quintile 5



Note: The percentage change is not plotted in the above charts for groups with fewer than 500 applicants in any one cycle.

D.12.9 18 year old applicants by POLAR4 quintile: England

POLAR4 quintile of applicant	2009	2010	2011	2012	2013	2014	2015	2016	2017	2018
Quintile 1	19,240	22,230	22,390	21,290	21,870	23,700	25,020	25,030	25,370	24,730
Quintile 2	29,680	32,860	32,810	31,340	31,950	33,670	34,910	35,160	34,820	34,390
Quintile 3	37,270	41,380	40,870	39,280	39,860	41,090	42,950	43,220	43,030	42,040
Quintile 4	47,230	51,010	50,950	48,670	49,530	50,420	52,110	52,480	52,570	52,150
Quintile 5	68,310	72,290	72,370	69,820	69,640	70,140	72,670	74,010	74,480	73,570

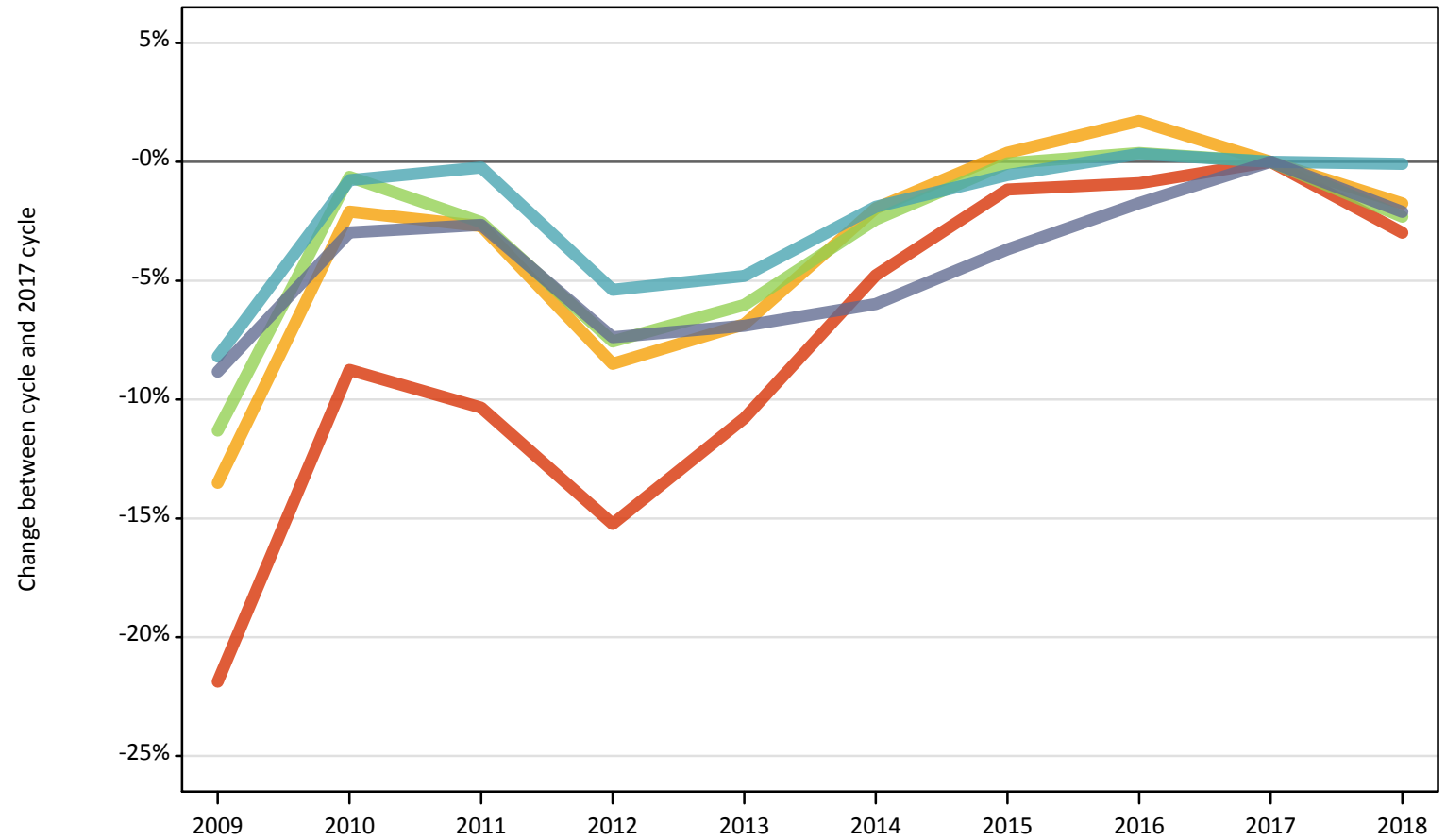
D.12.10 18 year old applicants by POLAR4 quintile: England

Difference between cycle and 2017 cycle

POLAR4 quintile of applicant	2009	2010	2011	2012	2013	2014	2015	2016	2017	2018
Quintile 1	-24%	-12%	-12%	-16%	-14%	-7%	-1%	-1%	0%	-3%
Quintile 2	-15%	-6%	-6%	-10%	-8%	-3%	0%	1%	0%	-1%
Quintile 3	-13%	-4%	-5%	-9%	-7%	-5%	-0%	0%	0%	-2%
Quintile 4	-10%	-3%	-3%	-7%	-6%	-4%	-1%	-0%	0%	-1%
Quintile 5	-8%	-3%	-3%	-6%	-6%	-6%	-2%	-1%	0%	-1%

D.12.11 18 year old male applicants by POLAR4 quintile: England
Difference between cycle and 2017 cycle

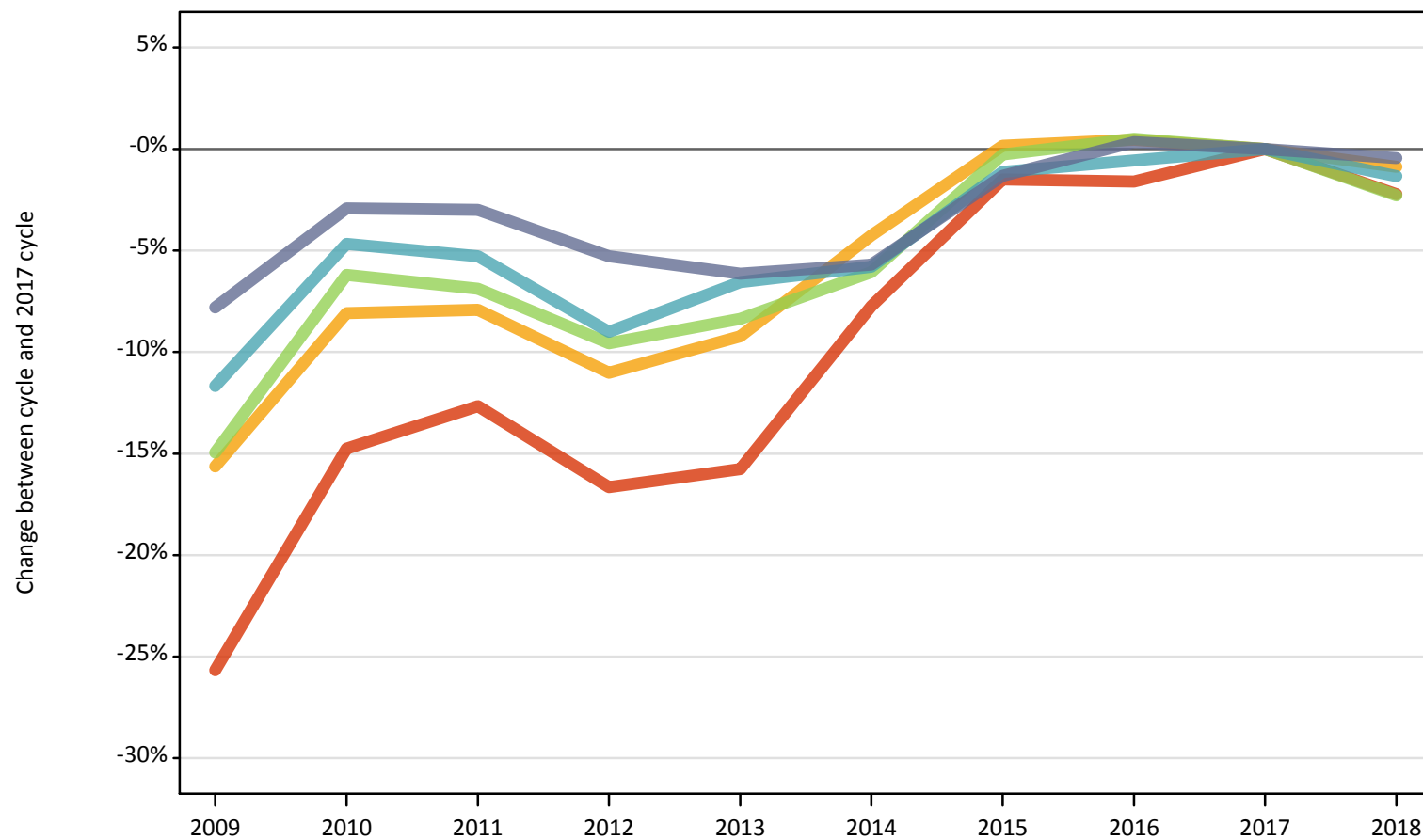
- Quintile 1
- Quintile 2
- Quintile 3
- Quintile 4
- Quintile 5



Note: The percentage change is not plotted in the above charts for groups with fewer than 500 applicants in any one cycle.

D.12.12 18 year old female applicants by POLAR4 quintile: England
Difference between cycle and 2017 cycle

- Quintile 1
- Quintile 2
- Quintile 3
- Quintile 4
- Quintile 5



Note: The percentage change is not plotted in the above charts for groups with fewer than 500 applicants in any one cycle.

D.12.13 18 year old applicants by sex and POLAR4 quintile: England

Sex and POLAR4 quintile of applicant		2009	2010	2011	2012	2013	2014	2015	2016	2017	2018
Female	Quintile 1	11,430	13,110	13,430	12,820	12,960	14,190	15,150	15,130	15,380	15,040
	Quintile 2	17,280	18,830	18,860	18,230	18,600	19,610	20,520	20,580	20,480	20,300
	Quintile 3	21,030	23,190	23,030	22,360	22,660	23,230	24,660	24,850	24,730	24,160
	Quintile 4	26,100	28,170	27,990	26,890	27,610	27,840	29,220	29,390	29,550	29,160
	Quintile 5	36,350	38,280	38,240	37,350	37,000	37,180	38,900	39,560	39,420	39,250
Male	Quintile 1	7,810	9,120	8,960	8,470	8,910	9,510	9,870	9,900	9,990	9,690
	Quintile 2	12,400	14,040	13,950	13,120	13,360	14,060	14,390	14,580	14,340	14,090
	Quintile 3	16,240	18,190	17,840	16,920	17,200	17,860	18,290	18,370	18,300	17,880
	Quintile 4	21,130	22,840	22,960	21,780	21,910	22,580	22,890	23,090	23,020	23,000
	Quintile 5	31,970	34,020	34,130	32,470	32,640	32,960	33,770	34,450	35,060	34,320

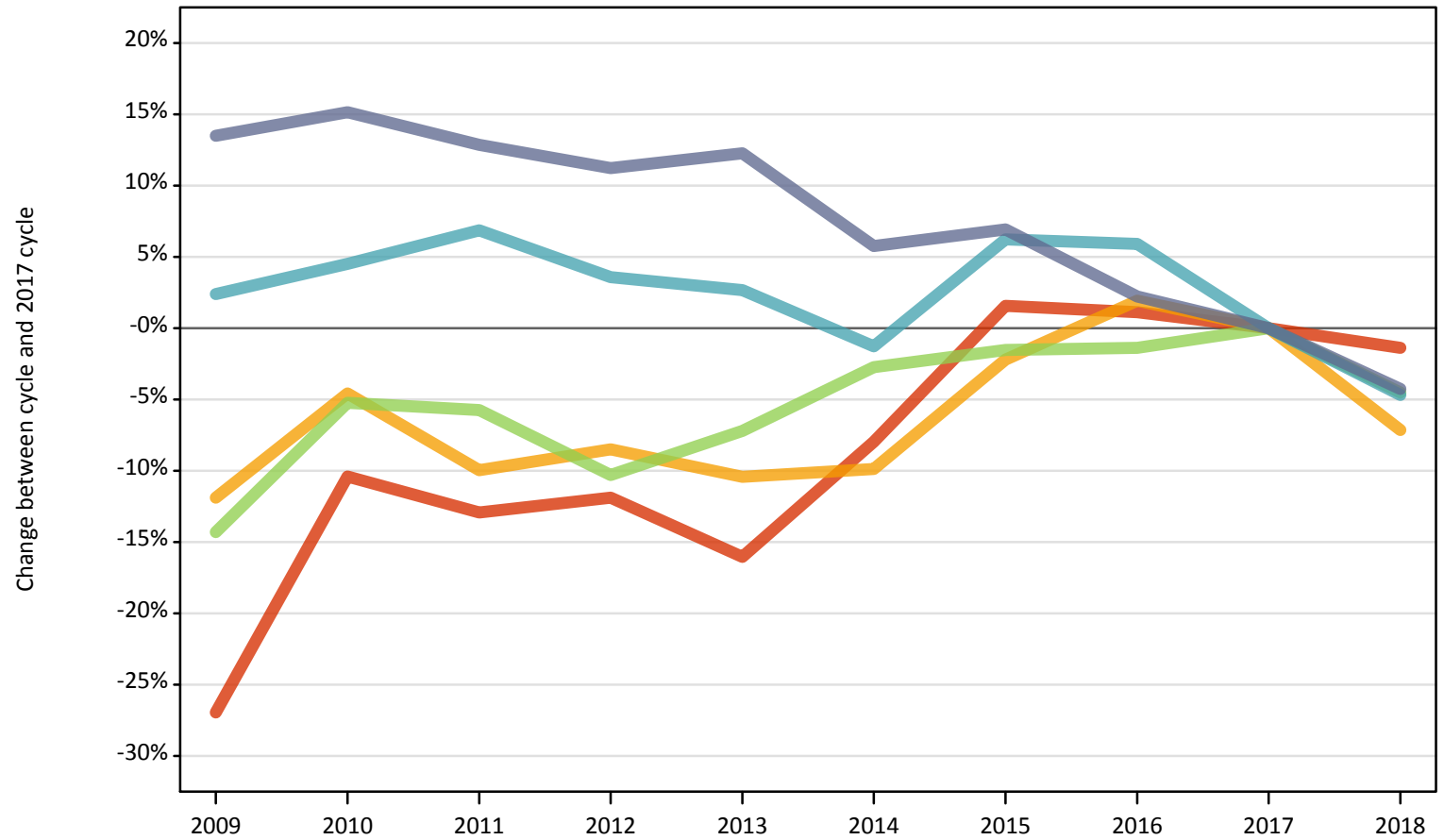
D.12.14 18 year old applicants by sex and POLAR4 quintile: England

Difference between cycle and 2017 cycle

Sex and POLAR4 quintile of applicant		2009	2010	2011	2012	2013	2014	2015	2016	2017	2018
Female	Quintile 1	-26%	-15%	-13%	-17%	-16%	-8%	-2%	-2%	0%	-2%
	Quintile 2	-16%	-8%	-8%	-11%	-9%	-4%	0%	0%	0%	-1%
	Quintile 3	-15%	-6%	-7%	-10%	-8%	-6%	-0%	1%	0%	-2%
	Quintile 4	-12%	-5%	-5%	-9%	-7%	-6%	-1%	-1%	0%	-1%
	Quintile 5	-8%	-3%	-3%	-5%	-6%	-6%	-1%	0%	0%	-0%
Male	Quintile 1	-22%	-9%	-10%	-15%	-11%	-5%	-1%	-1%	0%	-3%
	Quintile 2	-14%	-2%	-3%	-8%	-7%	-2%	0%	2%	0%	-2%
	Quintile 3	-11%	-1%	-3%	-8%	-6%	-2%	-0%	0%	0%	-2%
	Quintile 4	-8%	-1%	-0%	-5%	-5%	-2%	-1%	0%	0%	-0%
	Quintile 5	-9%	-3%	-3%	-7%	-7%	-6%	-4%	-2%	0%	-2%

D.12.15 18 year old applicants by POLAR4 quintile: Northern Ireland
Difference between cycle and 2017 cycle

- Quintile 1
- Quintile 2
- Quintile 3
- Quintile 4
- Quintile 5



Note: The percentage change is not plotted in the above charts for groups with fewer than 500 applicants in any one cycle.

D.12.16 18 year old applicants by POLAR4 quintile: Northern Ireland

POLAR4 quintile of applicant	2009	2010	2011	2012	2013	2014	2015	2016	2017	2018
Quintile 1	840	1,030	1,010	1,020	970	1,060	1,170	1,170	1,150	1,140
Quintile 2	960	1,040	990	1,000	980	990	1,070	1,120	1,090	1,020
Quintile 3	1,690	1,870	1,860	1,770	1,830	1,920	1,940	1,950	1,970	1,880
Quintile 4	2,910	2,970	3,040	2,940	2,920	2,810	3,020	3,010	2,840	2,710
Quintile 5	5,000	5,080	4,980	4,900	4,950	4,660	4,710	4,510	4,410	4,220

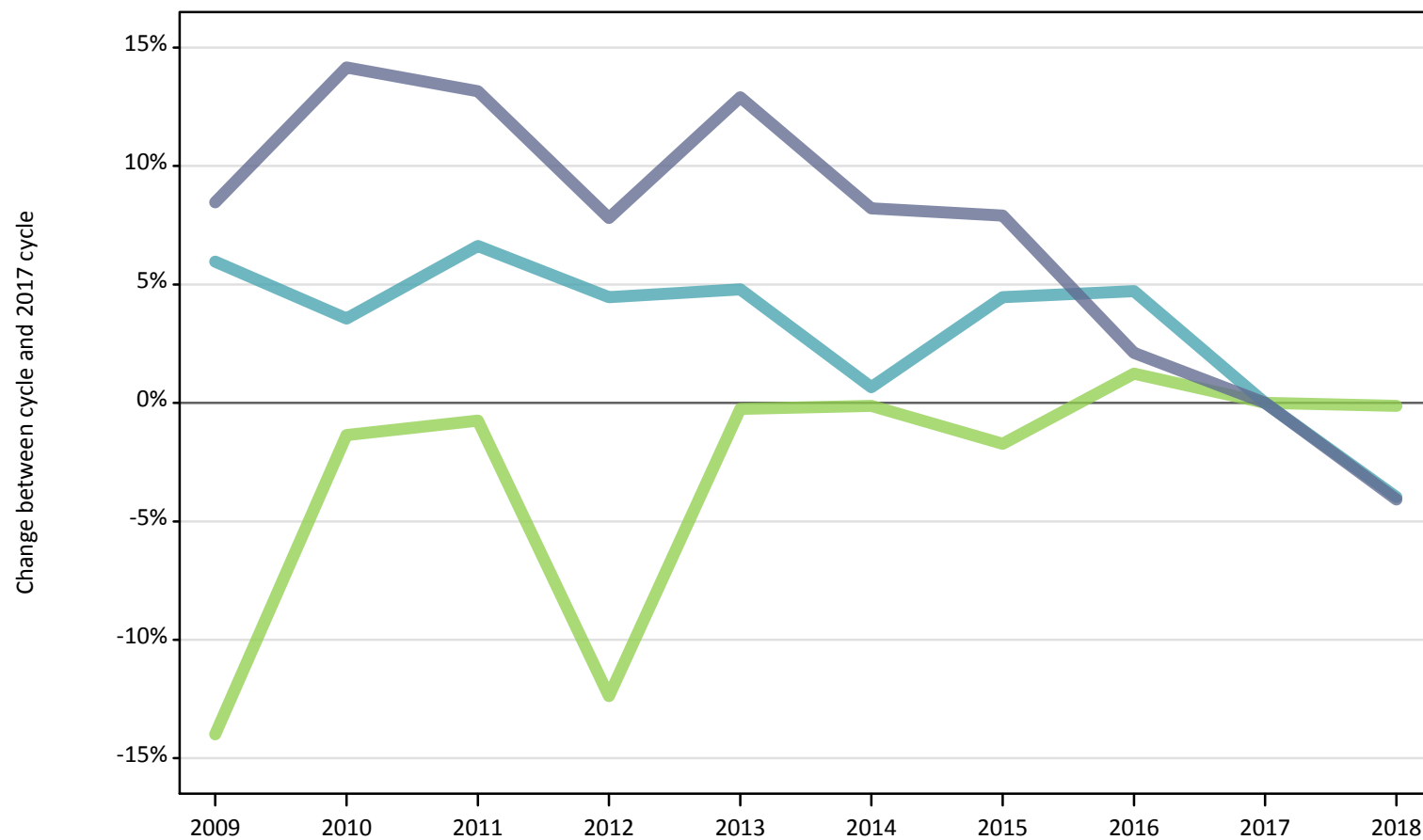
D.12.17 18 year old applicants by POLAR4 quintile: Northern Ireland

Difference between cycle and 2017 cycle

POLAR4 quintile of applicant	2009	2010	2011	2012	2013	2014	2015	2016	2017	2018
Quintile 1	-27%	-10%	-13%	-12%	-16%	-8%	2%	1%	0%	-1%
Quintile 2	-12%	-5%	-10%	-9%	-10%	-10%	-2%	2%	0%	-7%
Quintile 3	-14%	-5%	-6%	-10%	-7%	-3%	-2%	-1%	0%	-5%
Quintile 4	2%	5%	7%	4%	3%	-1%	6%	6%	0%	-5%
Quintile 5	13%	15%	13%	11%	12%	6%	7%	2%	0%	-4%

D.12.18 18 year old male applicants by POLAR4 quintile: Northern Ireland
Difference between cycle and 2017 cycle

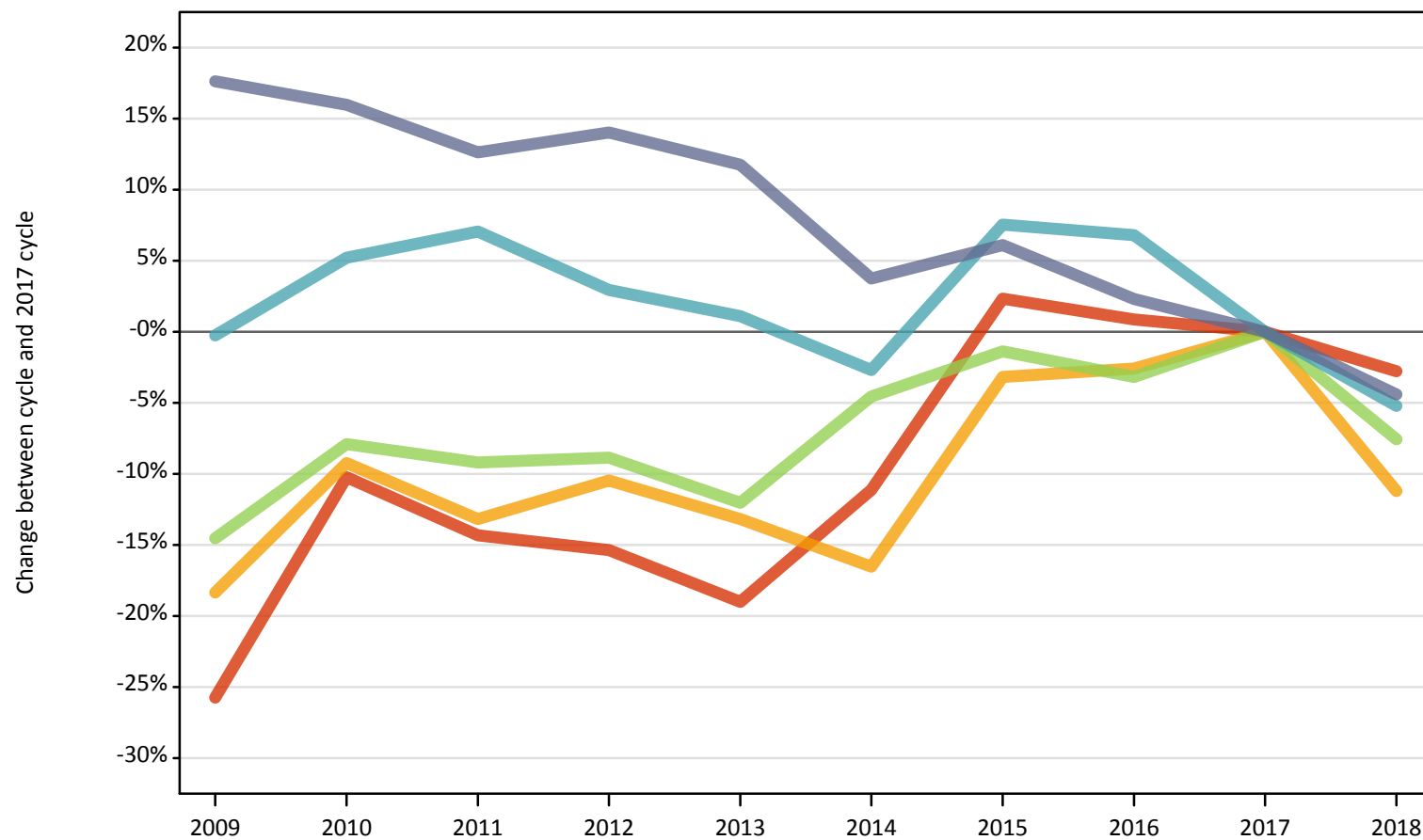
- Quintile 1
- Quintile 2
- Quintile 3
- Quintile 4
- Quintile 5



Note: The percentage change is not plotted in the above charts for groups with fewer than 500 applicants in any one cycle.

D.12.19 18 year old female applicants by POLAR4 quintile: Northern Ireland
Difference between cycle and 2017 cycle

- Quintile 1
- Quintile 2
- Quintile 3
- Quintile 4
- Quintile 5



Note: The percentage change is not plotted in the above charts for groups with fewer than 500 applicants in any one cycle.

D.12.20 18 year old applicants by sex and POLAR4 quintile: Northern Ireland

Sex and POLAR4 quintile of applicant		2009	2010	2011	2012	2013	2014	2015	2016	2017	2018
Female	Quintile 1	510	610	590	580	550	610	700	690	680	670
	Quintile 2	540	600	570	590	570	550	640	640	660	590
	Quintile 3	1,000	1,070	1,060	1,060	1,020	1,110	1,150	1,130	1,160	1,080
	Quintile 4	1,630	1,720	1,750	1,680	1,650	1,590	1,760	1,740	1,630	1,550
	Quintile 5	2,850	2,810	2,730	2,760	2,710	2,520	2,570	2,480	2,420	2,320
Male	Quintile 1	340	420	420	440	420	450	470	480	470	470
	Quintile 2	430	450	410	410	410	440	430	470	430	430
	Quintile 3	700	800	800	710	810	810	790	820	810	810
	Quintile 4	1,280	1,250	1,290	1,260	1,270	1,220	1,260	1,270	1,210	1,160
	Quintile 5	2,150	2,270	2,250	2,140	2,240	2,150	2,140	2,030	1,990	1,900

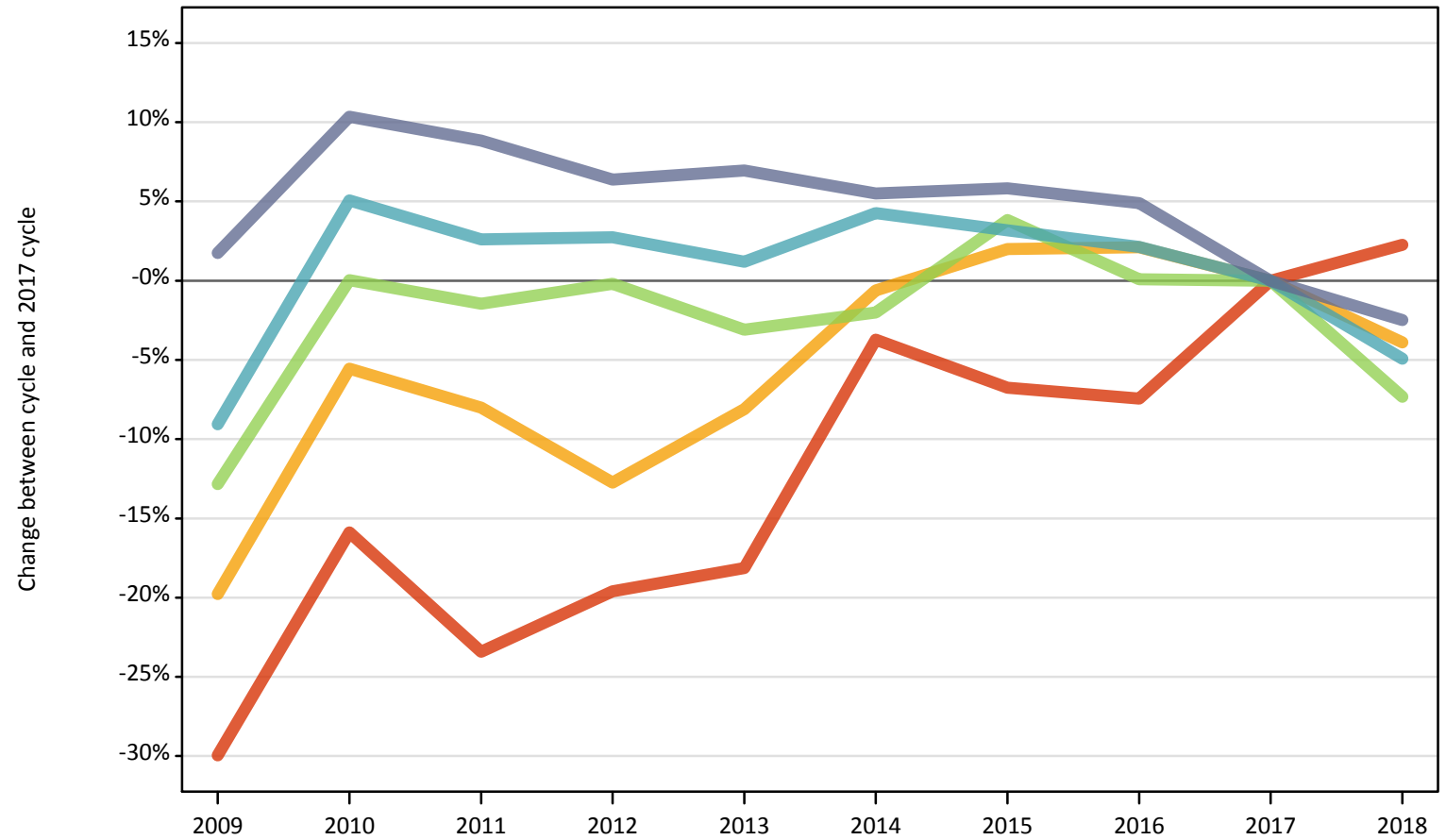
D.12.21 18 year old applicants by sex and POLAR4 quintile: Northern Ireland

Difference between cycle and 2017 cycle

Sex and POLAR4 quintile of applicant		2009	2010	2011	2012	2013	2014	2015	2016	2017	2018
Female	Quintile 1	-26%	-10%	-14%	-15%	-19%	-11%	2%	1%	0%	-3%
	Quintile 2	-18%	-9%	-13%	-10%	-13%	-17%	-3%	-3%	0%	-11%
	Quintile 3	-15%	-8%	-9%	-9%	-12%	-5%	-1%	-3%	0%	-8%
	Quintile 4	-0%	5%	7%	3%	1%	-3%	8%	7%	0%	-5%
	Quintile 5	18%	16%	13%	14%	12%	4%	6%	2%	0%	-4%
Male	Quintile 1	-29%	-11%	-11%	-7%	-12%	-3%	0%	1%	0%	1%
	Quintile 2	-2%	3%	-5%	-6%	-6%	0%	-1%	9%	0%	-1%
	Quintile 3	-14%	-1%	-1%	-12%	-0%	-0%	-2%	1%	0%	-0%
	Quintile 4	6%	4%	7%	4%	5%	1%	4%	5%	0%	-4%
	Quintile 5	8%	14%	13%	8%	13%	8%	8%	2%	0%	-4%

D.12.22 18 year old applicants by POLAR4 quintile: Scotland
Difference between cycle and 2017 cycle

- Quintile 1
- Quintile 2
- Quintile 3
- Quintile 4
- Quintile 5



Note: The percentage change is not plotted in the above charts for groups with fewer than 500 applicants in any one cycle.

D.12.23 18 year old applicants by POLAR4 quintile: Scotland

POLAR4 quintile of applicant	2009	2010	2011	2012	2013	2014	2015	2016	2017	2018
Quintile 1	620	750	680	710	730	860	830	820	890	910
Quintile 2	1,560	1,840	1,790	1,700	1,790	1,940	1,990	1,990	1,950	1,870
Quintile 3	2,740	3,140	3,090	3,130	3,040	3,080	3,260	3,140	3,140	2,910
Quintile 4	3,990	4,610	4,500	4,500	4,440	4,570	4,520	4,480	4,380	4,170
Quintile 5	8,460	9,180	9,050	8,850	8,900	8,780	8,800	8,730	8,320	8,110

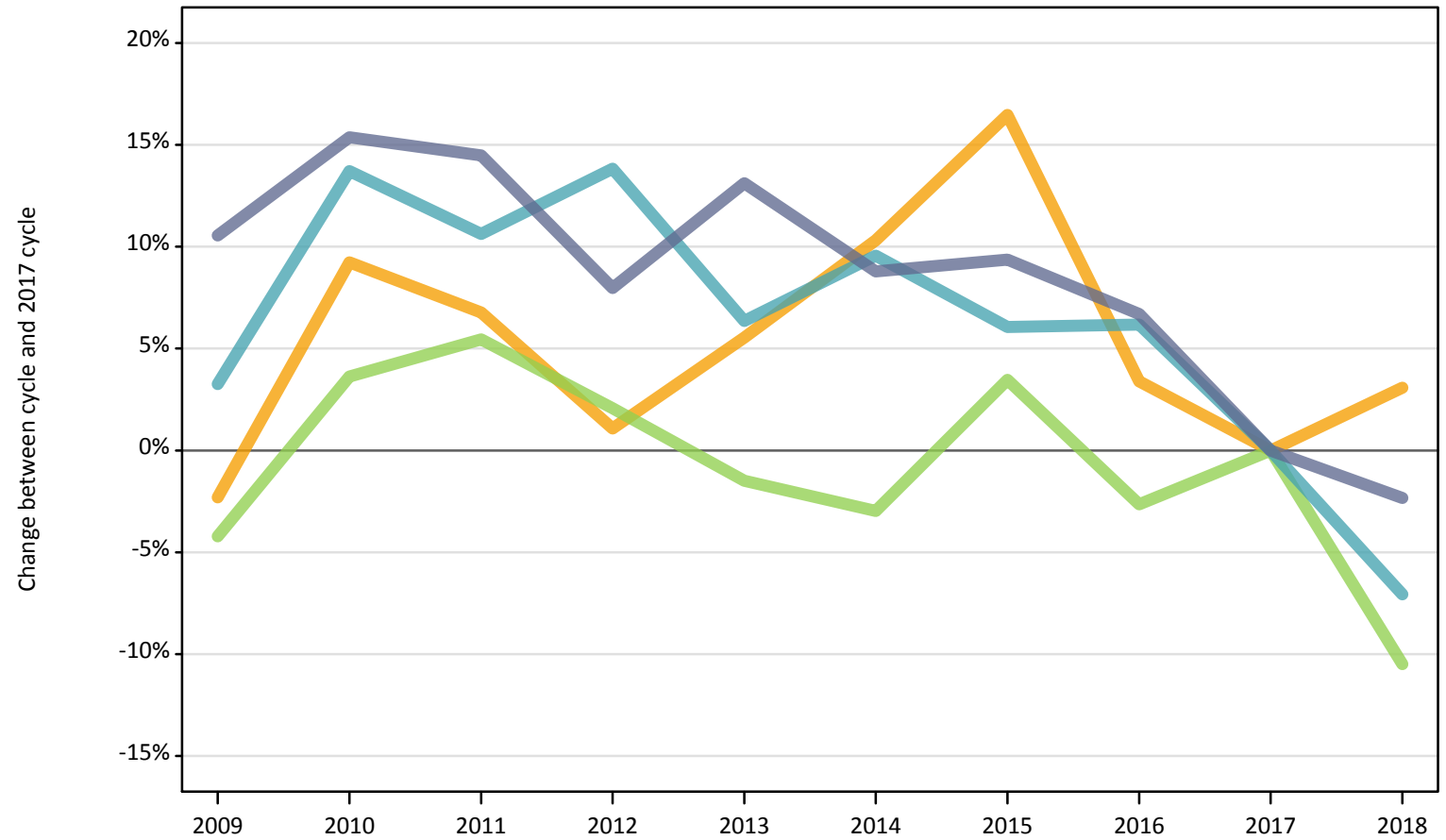
D.12.24 18 year old applicants by POLAR4 quintile: Scotland

Difference between cycle and 2017 cycle

POLAR4 quintile of applicant	2009	2010	2011	2012	2013	2014	2015	2016	2017	2018
Quintile 1	-30%	-16%	-23%	-20%	-18%	-4%	-7%	-7%	0%	2%
Quintile 2	-20%	-6%	-8%	-13%	-8%	-1%	2%	2%	0%	-4%
Quintile 3	-13%	0%	-1%	-0%	-3%	-2%	4%	0%	0%	-7%
Quintile 4	-9%	5%	3%	3%	1%	4%	3%	2%	0%	-5%
Quintile 5	2%	10%	9%	6%	7%	6%	6%	5%	0%	-2%

D.12.25 18 year old male applicants by POLAR4 quintile: Scotland
Difference between cycle and 2017 cycle

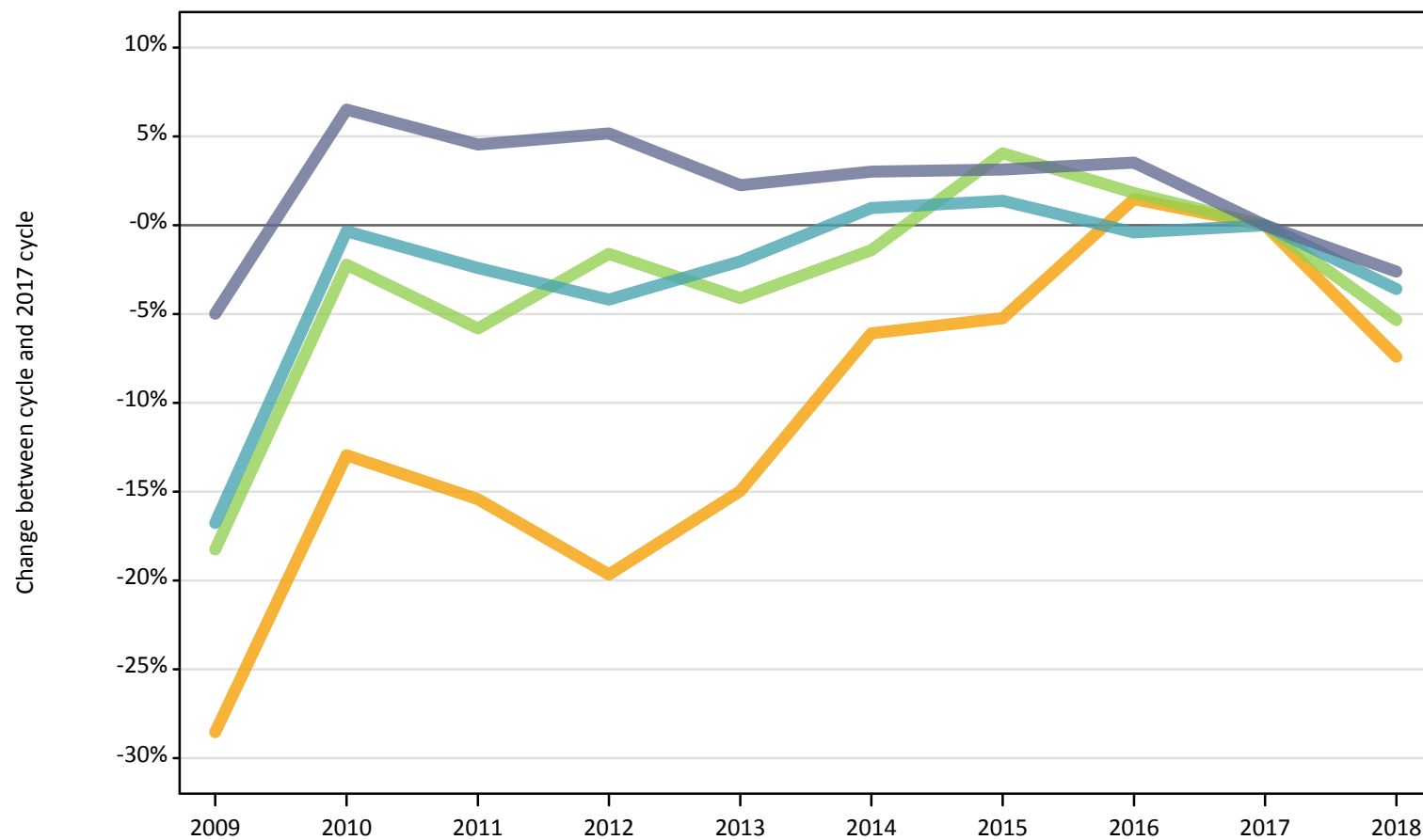
- Quintile 1
- Quintile 2
- Quintile 3
- Quintile 4
- Quintile 5



Note: The percentage change is not plotted in the above charts for groups with fewer than 500 applicants in any one cycle.

D.12.26 18 year old female applicants by POLAR4 quintile: Scotland
Difference between cycle and 2017 cycle

- Quintile 1
- Quintile 2
- Quintile 3
- Quintile 4
- Quintile 5



Note: The percentage change is not plotted in the above charts for groups with fewer than 500 applicants in any one cycle.

D.12.27 18 year old applicants by sex and POLAR4 quintile: Scotland

Sex and POLAR4 quintile of applicant		2009	2010	2011	2012	2013	2014	2015	2016	2017	2018
Female	Quintile 1	370	460	420	430	430	550	540	550	570	580
	Quintile 2	930	1,130	1,100	1,040	1,100	1,220	1,230	1,320	1,300	1,200
	Quintile 3	1,580	1,890	1,820	1,900	1,850	1,900	2,010	1,960	1,930	1,830
	Quintile 4	2,250	2,690	2,630	2,590	2,640	2,720	2,740	2,690	2,700	2,600
	Quintile 5	4,480	5,030	4,930	4,960	4,830	4,860	4,870	4,890	4,720	4,600
Male	Quintile 1	250	290	260	290	290	310	290	270	320	330
	Quintile 2	640	710	690	660	690	720	760	670	650	670
	Quintile 3	1,160	1,260	1,280	1,240	1,190	1,180	1,250	1,180	1,210	1,080
	Quintile 4	1,740	1,920	1,860	1,920	1,790	1,850	1,790	1,790	1,690	1,570
	Quintile 5	3,980	4,150	4,120	3,890	4,070	3,920	3,940	3,840	3,600	3,520

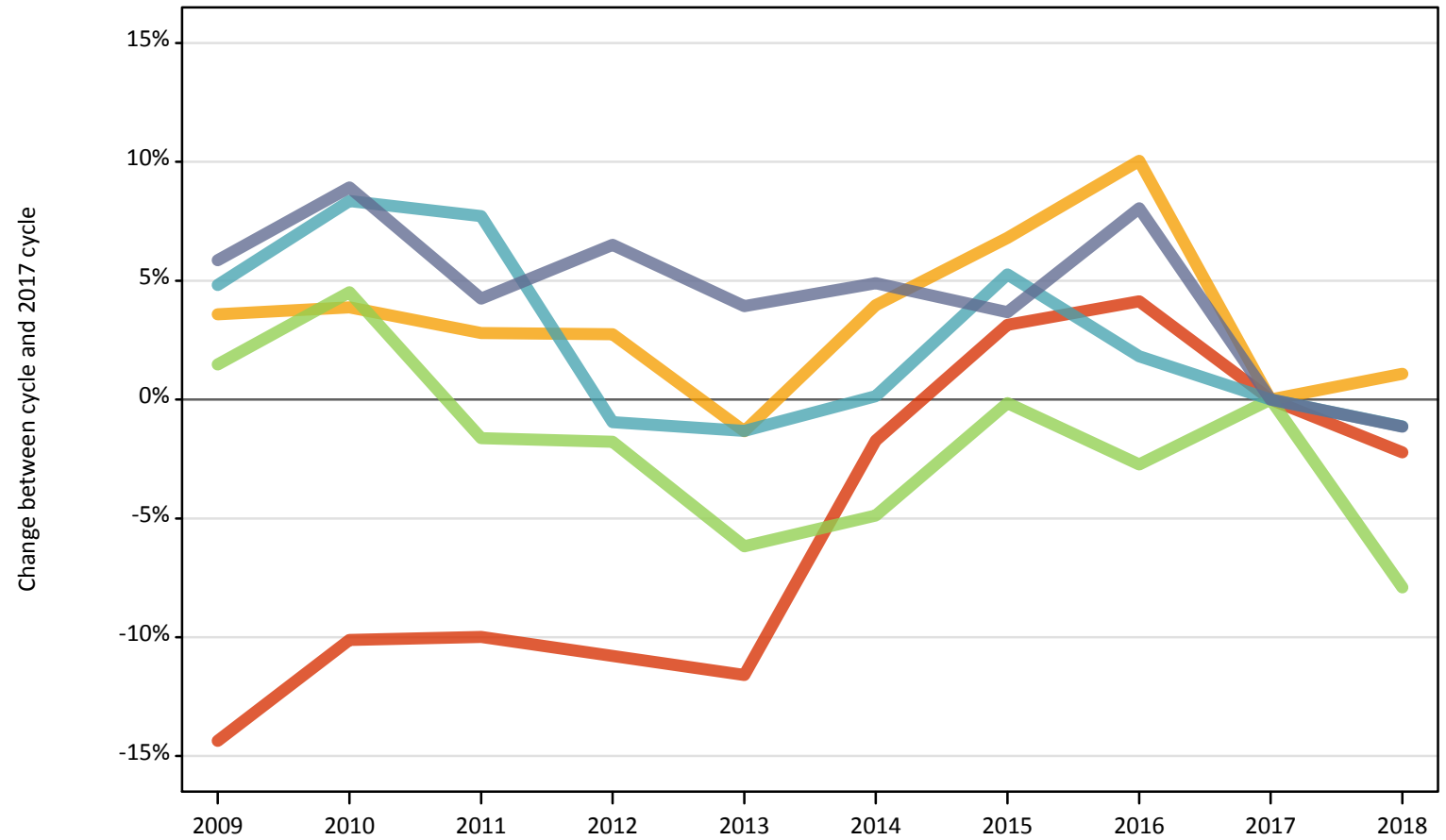
D.12.28 18 year old applicants by sex and POLAR4 quintile: Scotland

Difference between cycle and 2017 cycle

Sex and POLAR4 quintile of applicant		2009	2010	2011	2012	2013	2014	2015	2016	2017	2018
Female	Quintile 1	-35%	-20%	-27%	-25%	-24%	-4%	-6%	-4%	0%	2%
	Quintile 2	-29%	-13%	-15%	-20%	-15%	-6%	-5%	1%	0%	-7%
	Quintile 3	-18%	-2%	-6%	-2%	-4%	-1%	4%	2%	0%	-5%
	Quintile 4	-17%	-0%	-2%	-4%	-2%	1%	1%	-0%	0%	-4%
	Quintile 5	-5%	7%	5%	5%	2%	3%	3%	4%	0%	-3%
Male	Quintile 1	-20%	-8%	-17%	-10%	-8%	-4%	-8%	-14%	0%	3%
	Quintile 2	-2%	9%	7%	1%	6%	10%	16%	3%	0%	3%
	Quintile 3	-4%	4%	5%	2%	-1%	-3%	3%	-3%	0%	-10%
	Quintile 4	3%	14%	11%	14%	6%	10%	6%	6%	0%	-7%
	Quintile 5	11%	15%	14%	8%	13%	9%	9%	7%	0%	-2%

D.12.29 18 year old applicants by POLAR4 quintile: Wales
Difference between cycle and 2017 cycle

- Quintile 1
- Quintile 2
- Quintile 3
- Quintile 4
- Quintile 5



Note: The percentage change is not plotted in the above charts for groups with fewer than 500 applicants in any one cycle.

D.12.30 18 year old applicants by POLAR4 quintile: Wales

POLAR4 quintile of applicant	2009	2010	2011	2012	2013	2014	2015	2016	2017	2018
Quintile 1	1,390	1,460	1,460	1,450	1,430	1,590	1,670	1,690	1,620	1,590
Quintile 2	2,490	2,490	2,470	2,470	2,370	2,490	2,560	2,640	2,400	2,430
Quintile 3	2,750	2,830	2,660	2,660	2,540	2,570	2,700	2,630	2,710	2,490
Quintile 4	2,310	2,390	2,370	2,180	2,170	2,210	2,320	2,240	2,200	2,180
Quintile 5	2,420	2,490	2,390	2,440	2,380	2,400	2,370	2,470	2,290	2,260

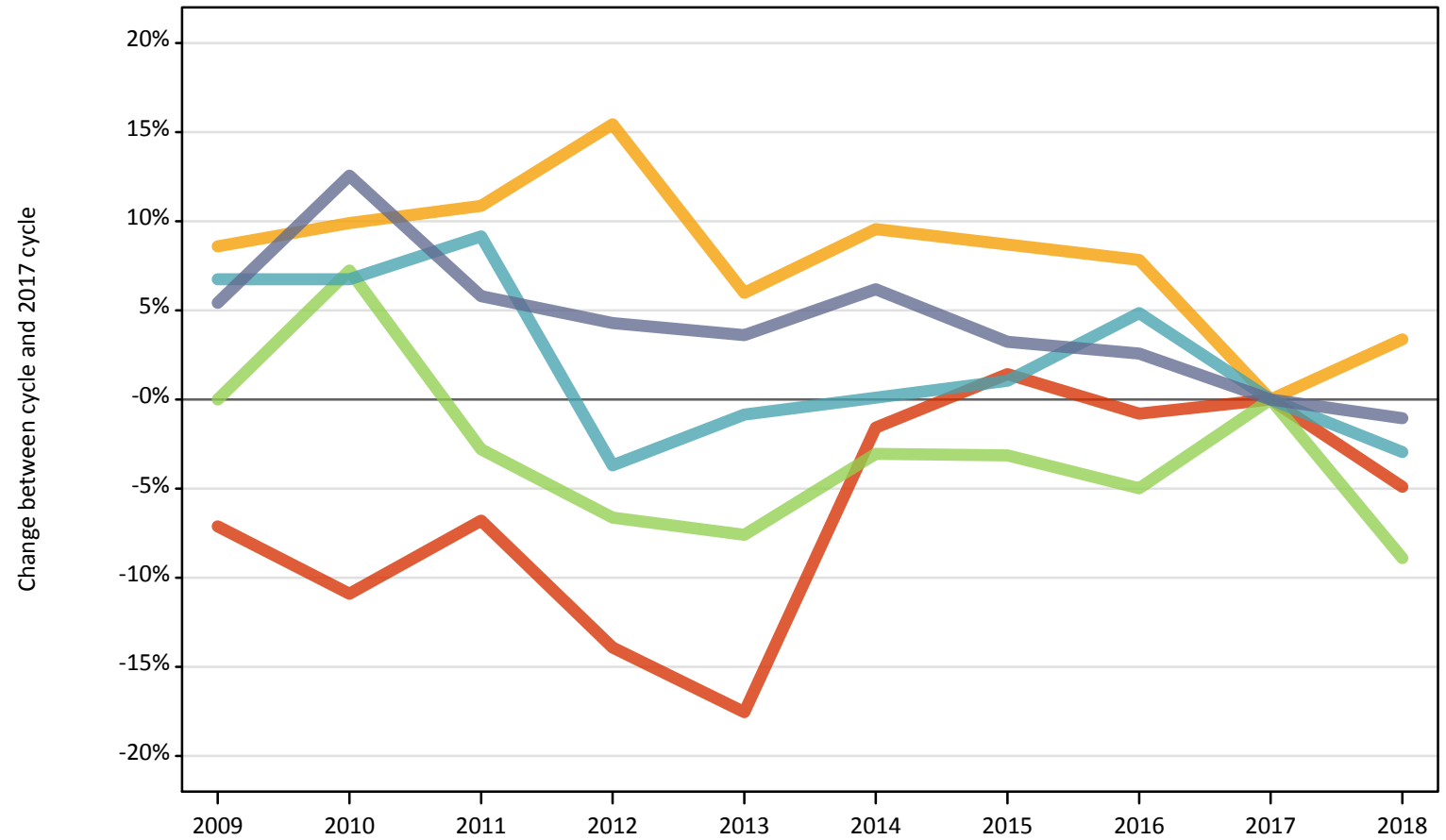
D.12.31 18 year old applicants by POLAR4 quintile: Wales

Difference between cycle and 2017 cycle

POLAR4 quintile of applicant	2009	2010	2011	2012	2013	2014	2015	2016	2017	2018
Quintile 1	-14%	-10%	-10%	-11%	-12%	-2%	3%	4%	0%	-2%
Quintile 2	4%	4%	3%	3%	-1%	4%	7%	10%	0%	1%
Quintile 3	1%	5%	-2%	-2%	-6%	-5%	-0%	-3%	0%	-8%
Quintile 4	5%	8%	8%	-1%	-1%	0%	5%	2%	0%	-1%
Quintile 5	6%	9%	4%	7%	4%	5%	4%	8%	0%	-1%

D.12.32 18 year old male applicants by POLAR4 quintile: Wales
Difference between cycle and 2017 cycle

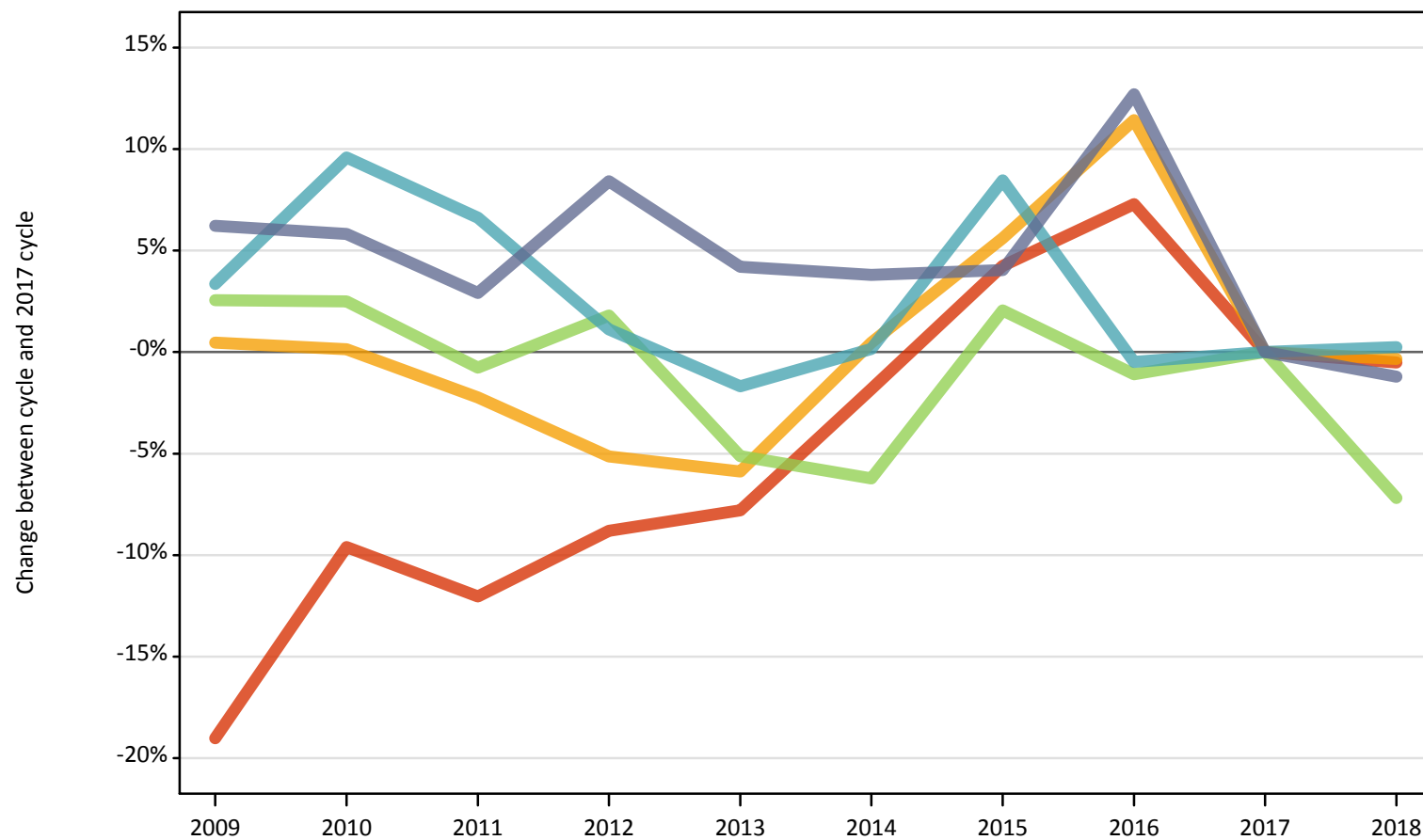
- Quintile 1
- Quintile 2
- Quintile 3
- Quintile 4
- Quintile 5



Note: The percentage change is not plotted in the above charts for groups with fewer than 500 applicants in any one cycle.

D.12.33 18 year old female applicants by POLAR4 quintile: Wales
Difference between cycle and 2017 cycle

- Quintile 1
- Quintile 2
- Quintile 3
- Quintile 4
- Quintile 5



Note: The percentage change is not plotted in the above charts for groups with fewer than 500 applicants in any one cycle.

D.12.34 18 year old applicants by sex and POLAR4 quintile: Wales

Sex and POLAR4 quintile of applicant		2009	2010	2011	2012	2013	2014	2015	2016	2017	2018
Female	Quintile 1	800	890	870	900	910	970	1,030	1,060	990	980
	Quintile 2	1,490	1,480	1,450	1,400	1,390	1,490	1,560	1,650	1,480	1,470
	Quintile 3	1,600	1,600	1,550	1,590	1,480	1,460	1,590	1,540	1,560	1,450
	Quintile 4	1,300	1,370	1,340	1,270	1,230	1,260	1,360	1,250	1,250	1,260
	Quintile 5	1,310	1,310	1,270	1,340	1,290	1,280	1,290	1,390	1,240	1,220
Male	Quintile 1	590	560	590	550	520	620	640	630	630	600
	Quintile 2	1,000	1,010	1,020	1,060	980	1,010	1,000	990	920	950
	Quintile 3	1,150	1,230	1,110	1,070	1,060	1,110	1,110	1,090	1,150	1,040
	Quintile 4	1,010	1,010	1,040	920	940	950	960	1,000	950	920
	Quintile 5	1,110	1,180	1,110	1,100	1,090	1,120	1,090	1,080	1,050	1,040

D.12.35 18 year old applicants by sex and POLAR4 quintile: Wales

Difference between cycle and 2017 cycle

Sex and POLAR4 quintile of applicant		2009	2010	2011	2012	2013	2014	2015	2016	2017	2018
Female	Quintile 1	-19%	-10%	-12%	-9%	-8%	-2%	4%	7%	0%	-1%
	Quintile 2	0%	0%	-2%	-5%	-6%	0%	6%	11%	0%	-0%
	Quintile 3	3%	3%	-1%	2%	-5%	-6%	2%	-1%	0%	-7%
	Quintile 4	3%	10%	7%	1%	-2%	0%	8%	-0%	0%	0%
	Quintile 5	6%	6%	3%	8%	4%	4%	4%	13%	0%	-1%
Male	Quintile 1	-7%	-11%	-7%	-14%	-18%	-2%	1%	-1%	0%	-5%
	Quintile 2	9%	10%	11%	15%	6%	10%	9%	8%	0%	3%
	Quintile 3	0%	7%	-3%	-7%	-8%	-3%	-3%	-5%	0%	-9%
	Quintile 4	7%	7%	9%	-4%	-1%	0%	1%	5%	0%	-3%
	Quintile 5	5%	13%	6%	4%	4%	6%	3%	3%	0%	-1%

D.12.36 Technical notes and definitions

Applicants have been able to submit applications for all 2018 courses since early September.

Applicants who submit their applications to UCAS by the January deadline are considered as 'on time' applicants for the large majority of courses offered through UCAS.

This statistical release covers all Main Scheme applicants who submit their applications to UCAS by the January deadline, including those who have applied for courses with a 15 October deadline. Counts of RPAs (records of prior acceptance) are not included.

Counts of the number of applicants reported have been rounded to the nearest 10 applicants, this may result in instances where totals do not equal the sum of the components. Proportional changes have been rounded to the nearest whole percentage point.

Age

This statistical release uses country-specific age definitions which align with the cut off points for school/college cohorts within the different administrations of the UK. For England and Wales ages are defined on the 31 August, for Northern Ireland on the 1 July and for Scotland on the 28 February the following year. Defining ages in this way matches the assignment of children to school cohorts. For applicants outside of the UK the cohort cut off for England and Wales has been used.

Applicant

A person who has made an application in the UCAS system during the cycle reported (including applications for deferred entry). Records of prior acceptance (RPAs) are excluded.

Application

An application to a course at a provider made by an applicant in the UCAS main scheme. Applicants may make up to five main scheme applications.

Country of provider

An applicant may be counted once for each provider country they have applied to in the main scheme. If an applicant has applied to providers in multiple countries then the applicant is counted once within each country of provider applied to.

Domicile

Declared area of permanent residence. The Channel Islands and the Isle of Man have been assigned as 'Not EU'.

Ethnic group

High level grouping of ethnic origin as declared by the applicant: 'Asian', 'Black', 'Mixed', 'White', 'Other', 'Unknown'.

First time applicant

An applicant that did not apply to the UCAS scheme in the previous cycle.

Main scheme

The main UCAS application scheme through which up to five providers/courses can be applied to. This opens in September and closes to new applications on 30 June the following year.

Reapplicant

An applicant that applied to the UCAS scheme in the previous cycle.

Sex

As declared by the applicant.

SIMD 2016

Scottish Index of Multiple Deprivation identifies small area concentrations of multiple deprivation across all of Scotland, providing a relative measure of deprivation among small areas (data zones). In this report, the SIMD 2016 has been used to group areas in each year in the times series.

POLAR3

Developed by HEFCE and classifies small areas across the UK into five groups, according to their level of young participation in HE. Each of these groups represents around 20 per cent of young people, and is ranked from quintile 1 (areas with the lowest young participation rates, considered as the most disadvantaged) to quintile 5 (highest young participation rates, considered most advantaged).

POLAR4

Developed by HEFCE and classifies small areas across the UK into five groups, according to their level of young participation in HE. Each of these groups represents around 20 per cent of young people, and is ranked from quintile 1 (areas with the lowest young participation rates, considered as the most disadvantaged) to quintile 5 (highest young participation rates, considered most advantaged). POLAR4 is the most recent version of the POLAR classification, and is available for the first time in UCAS' reporting since its launch in 2017.

Tariff Group of provider

Providers are grouped as higher, medium or lower tariff based on their average levels of attainment of their accepted applicants (summarised through UCAS Tariff points) in recent cycles. Each group of providers accounted for around a third of all UK 18 year old acceptances in recent cycles.

Subject group

The JACS3 classification used to classify courses into subject groups.