

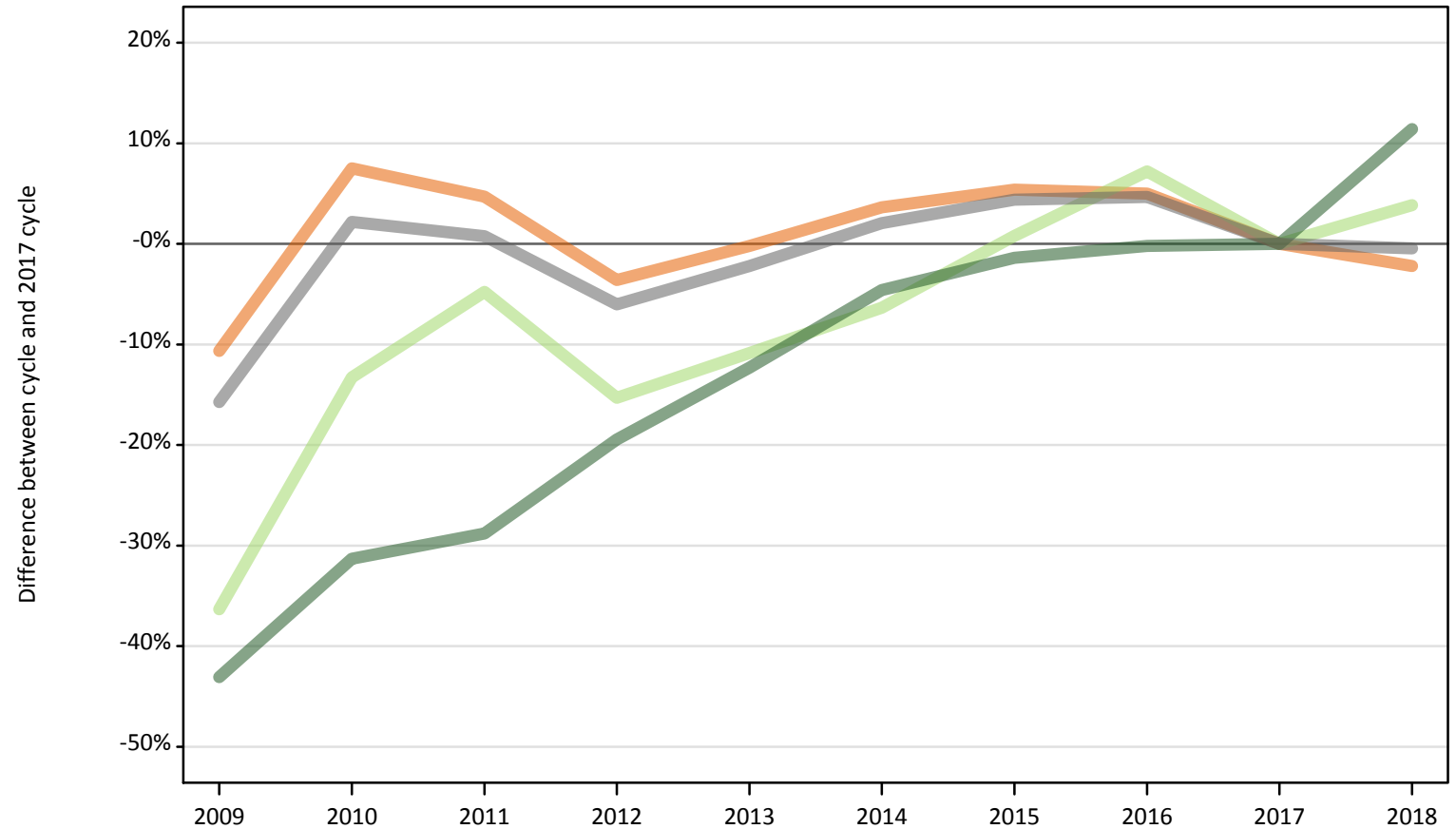
January Deadline Analysis: Reapplicants

Applicants by reapplication status at the 15 January deadline

D.3.1 First-time applicants by domicile group

Difference between cycle and 2017 cycle

- UK
- EU (excluding UK)
- Not EU
- All domiciles



D.3.2 Previously applied applicants by domicile group Difference between cycle and 2017 cycle

- UK
- EU (excluding UK)
- Not EU
- All domiciles



D.3.3 Applicants by whether previously applied and domicile group

Applicant status and domicile group		2009	2010	2011	2012	2013	2014	2015	2016	2017	2018
First-time applicant	UK	379,330	456,430	444,440	409,240	423,570	439,910	447,450	445,740	424,490	415,130
	EU (excluding UK)	25,120	34,230	37,590	33,430	35,180	36,960	39,780	42,310	39,460	40,990
	Not EU	28,060	33,850	35,090	39,690	43,220	47,020	48,590	49,180	49,280	54,910
	All domiciles	432,510	524,510	517,120	482,360	501,970	523,890	535,820	537,240	513,230	511,030
Previously applied	UK	28,350	41,570	60,540	51,940	50,740	50,030	50,100	50,190	45,000	41,940
	EU (excluding UK)	1,610	2,310	3,200	2,770	2,810	2,820	2,940	2,910	2,610	2,520
	Not EU	1,670	2,140	2,660	2,950	3,290	3,270	3,430	3,380	3,360	3,540
	All domiciles	31,630	46,010	66,410	57,660	56,850	56,120	56,470	56,480	50,960	48,000
All	UK	407,680	498,000	504,980	461,180	474,310	489,940	497,550	495,940	469,490	457,070
	EU (excluding UK)	26,730	36,530	40,790	36,210	37,990	39,780	42,720	45,220	42,070	43,510
	Not EU	29,730	35,980	37,760	42,640	46,510	50,290	52,020	52,560	52,630	58,450
	All domiciles	464,140	570,510	583,530	540,020	558,820	580,000	592,290	593,720	564,190	559,030

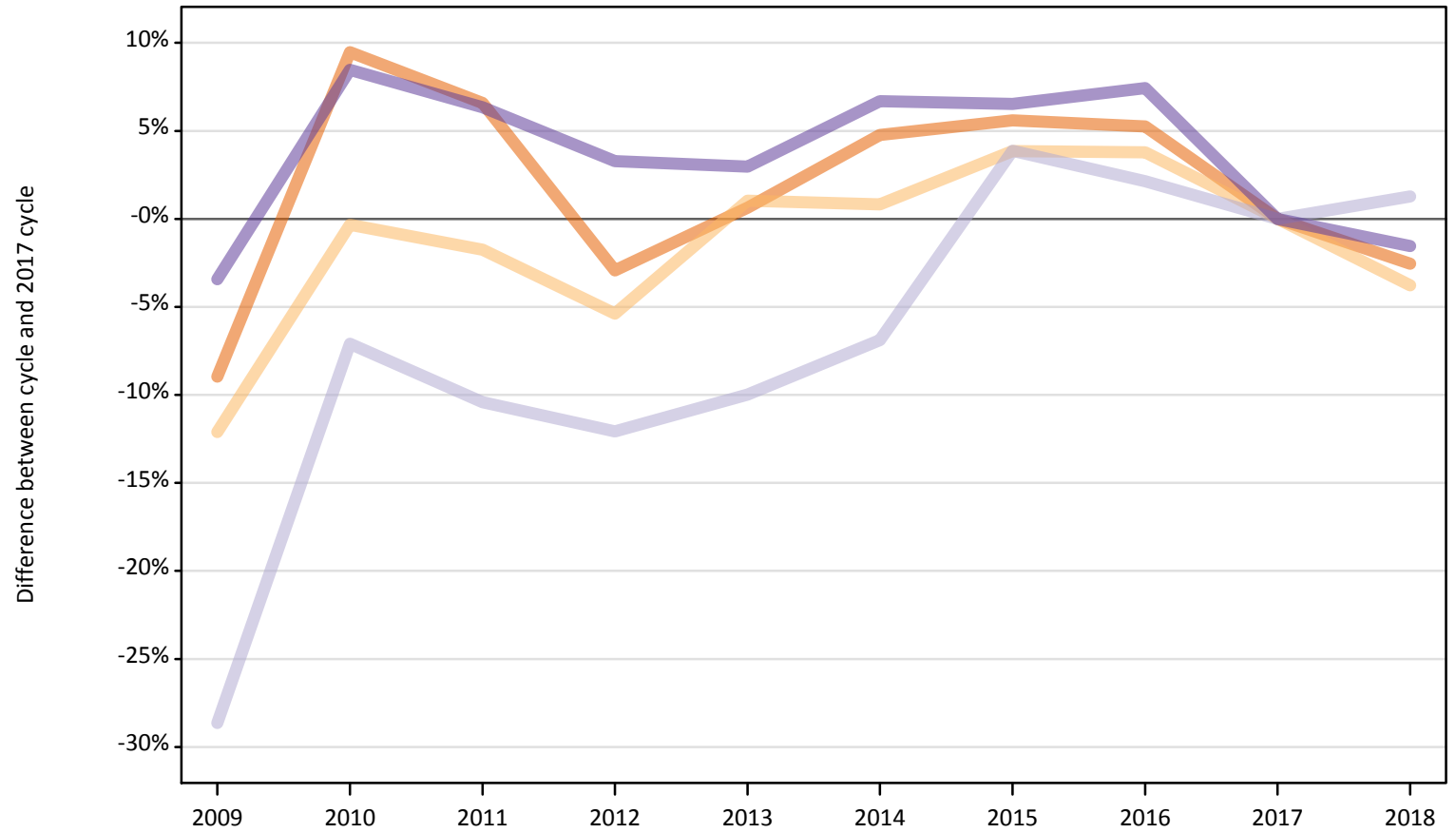
D.3.4 Applicants by whether previously applied and domicile group

Difference between cycle and 2017 cycle

Applicant status and domicile group		2009	2010	2011	2012	2013	2014	2015	2016	2017	2018
First-time applicant	UK	-11%	8%	5%	-4%	-0%	4%	5%	5%	0%	-2%
	EU (excluding UK)	-36%	-13%	-5%	-15%	-11%	-6%	1%	7%	0%	4%
	Not EU	-43%	-31%	-29%	-19%	-12%	-5%	-1%	-0%	0%	11%
	All domiciles	-16%	2%	1%	-6%	-2%	2%	4%	5%	0%	-0%
Previously applied	UK	-37%	-8%	35%	15%	13%	11%	11%	12%	0%	-7%
	EU (excluding UK)	-38%	-12%	23%	6%	8%	8%	13%	12%	0%	-3%
	Not EU	-50%	-36%	-21%	-12%	-2%	-3%	2%	1%	0%	5%
	All domiciles	-38%	-10%	30%	13%	12%	10%	11%	11%	0%	-6%
All	UK	-13%	6%	8%	-2%	1%	4%	6%	6%	0%	-3%
	EU (excluding UK)	-36%	-13%	-3%	-14%	-10%	-5%	2%	7%	0%	3%
	Not EU	-44%	-32%	-28%	-19%	-12%	-4%	-1%	-0%	0%	11%
	All domiciles	-18%	1%	3%	-4%	-1%	3%	5%	5%	0%	-1%

D.3.5 First-time applicants by UK country of domicile
Difference between cycle and 2017 cycle

- England
- Northern Ireland
- Scotland
- Wales



D.3.6 Previously applied applicants by UK country of domicile
Difference between cycle and 2017 cycle

- England
- Northern Ireland
- Scotland
- Wales



D.3.7 Applicants by first-time and previously applied and UK country of domicile

Applicant status and domicile group		2009	2010	2011	2012	2013	2014	2015	2016	2017	2018
First-time applicant	England	319,480	384,130	374,040	340,650	353,130	367,650	370,560	369,360	350,910	341,990
	Northern Ireland	15,050	17,070	16,830	16,200	17,300	17,270	17,780	17,780	17,130	16,480
	Scotland	27,490	35,790	34,510	33,870	34,680	35,870	40,020	39,350	38,530	39,020
	Wales	17,310	19,440	19,060	18,510	18,460	19,120	19,090	19,260	17,920	17,650
	UK	379,330	456,430	444,440	409,240	423,570	439,910	447,450	445,740	424,490	415,130
Previously applied	England	24,390	35,860	50,760	42,200	41,200	40,650	40,860	39,630	34,960	32,460
	Northern Ireland	890	1,370	2,300	2,090	2,280	2,280	2,250	2,620	2,340	2,150
	Scotland	2,060	2,970	5,250	5,300	5,280	5,210	5,080	6,070	6,000	5,880
	Wales	1,020	1,360	2,230	2,360	1,980	1,890	1,910	1,870	1,690	1,460
	UK	28,350	41,570	60,540	51,940	50,740	50,030	50,100	50,190	45,000	41,940
All	England	343,860	419,990	424,800	382,840	394,330	408,300	411,420	408,990	385,870	374,440
	Northern Ireland	15,940	18,440	19,130	18,290	19,590	19,550	20,040	20,400	19,470	18,630
	Scotland	29,550	38,760	39,760	39,170	39,950	41,080	45,100	45,420	44,530	44,900
	Wales	18,330	20,810	21,290	20,880	20,440	21,010	21,000	21,130	19,620	19,100
	UK	407,680	498,000	504,980	461,180	474,310	489,940	497,550	495,940	469,490	457,070

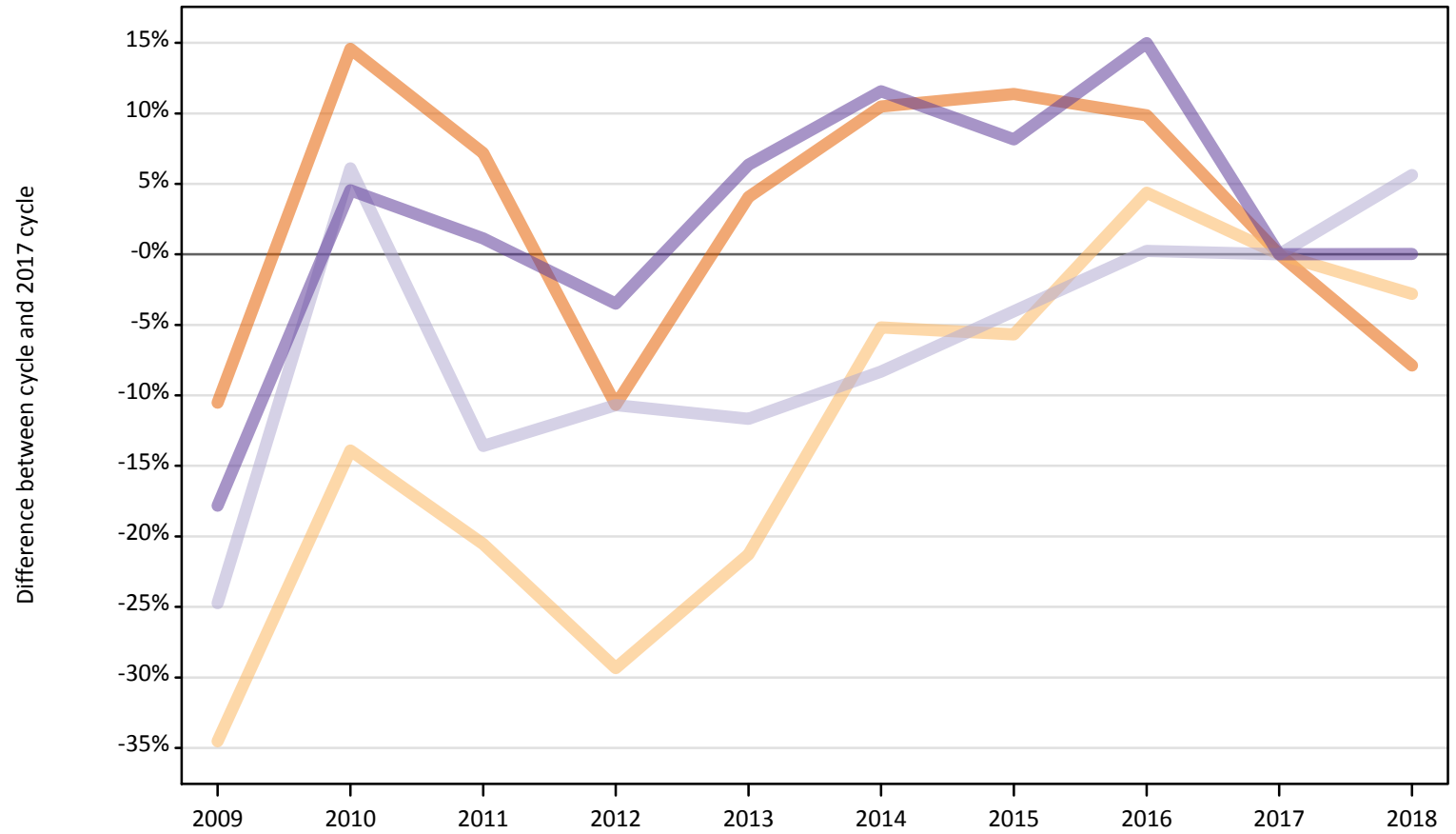
D.3.8 Applicants by first-time and previously applied and UK country of domicile

Difference between cycle and 2017 cycle

Applicant status and domicile group		2009	2010	2011	2012	2013	2014	2015	2016	2017	2018
First-time applicant	England	-9%	9%	7%	-3%	1%	5%	6%	5%	0%	-3%
	Northern Ireland	-12%	-0%	-2%	-5%	1%	1%	4%	4%	0%	-4%
	Scotland	-29%	-7%	-10%	-12%	-10%	-7%	4%	2%	0%	1%
	Wales	-3%	8%	6%	3%	3%	7%	7%	7%	0%	-2%
	UK	-11%	8%	5%	-4%	-0%	4%	5%	5%	0%	-2%
Previously applied	England	-30%	3%	45%	21%	18%	16%	17%	13%	0%	-7%
	Northern Ireland	-62%	-42%	-2%	-11%	-3%	-3%	-4%	12%	0%	-8%
	Scotland	-66%	-50%	-13%	-12%	-12%	-13%	-15%	1%	0%	-2%
	Wales	-40%	-19%	32%	39%	17%	12%	13%	11%	0%	-14%
	UK	-37%	-8%	35%	15%	13%	11%	11%	12%	0%	-7%
All	England	-11%	9%	10%	-1%	2%	6%	7%	6%	0%	-3%
	Northern Ireland	-18%	-5%	-2%	-6%	1%	0%	3%	5%	0%	-4%
	Scotland	-34%	-13%	-11%	-12%	-10%	-8%	1%	2%	0%	1%
	Wales	-7%	6%	9%	6%	4%	7%	7%	8%	0%	-3%
	UK	-13%	6%	8%	-2%	1%	4%	6%	6%	0%	-3%

D.3.9 19 year old first-time applicants by UK country of domicile
Difference between cycle and 2017 cycle

- England
- Northern Ireland
- Scotland
- Wales



D.3.10 19 year old previously applied applicants by UK country of domicile
Difference between cycle and 2017 cycle

- England
- Northern Ireland
- Scotland
- Wales



D.3.11 19 year old applicants by first-time and previously applied and UK country of domicile

Applicant status and domicile group		2009	2010	2011	2012	2013	2014	2015	2016	2017	2018
First-time applicant	England	48,170	61,680	57,700	48,090	56,030	59,480	59,950	59,150	53,830	49,590
	Northern Ireland	1,050	1,380	1,270	1,130	1,260	1,520	1,510	1,670	1,600	1,560
	Scotland	2,460	3,470	2,830	2,920	2,890	3,000	3,140	3,280	3,270	3,460
	Wales	2,120	2,690	2,600	2,480	2,740	2,870	2,780	2,960	2,570	2,580
	UK	53,800	69,220	64,410	54,630	62,920	66,870	67,390	67,060	61,280	57,180
Previously applied	England	15,080	20,570	29,040	21,510	22,930	21,420	21,530	21,320	19,470	19,540
	Northern Ireland	620	970	1,620	1,420	1,600	1,440	1,490	1,770	1,580	1,430
	Scotland	1,000	1,420	2,390	2,410	2,360	2,270	2,300	2,420	2,240	2,230
	Wales	610	780	1,250	1,260	1,000	980	1,000	970	870	770
	UK	17,300	23,740	34,300	26,590	27,890	26,100	26,320	26,480	24,160	23,970
All	England	63,250	82,250	86,740	69,600	78,950	80,900	81,480	80,470	73,310	69,140
	Northern Ireland	1,670	2,350	2,900	2,550	2,870	2,950	3,000	3,440	3,180	2,980
	Scotland	3,460	4,890	5,220	5,330	5,250	5,270	5,450	5,700	5,520	5,690
	Wales	2,730	3,480	3,850	3,740	3,740	3,850	3,780	3,930	3,440	3,340
	UK	71,100	92,970	98,700	81,220	90,810	92,970	93,700	93,540	85,440	81,150

D.3.12 19 year old applicants by first-time and previously applied and UK country of domicile

Difference between cycle and 2017 cycle

Applicant status and domicile group		2009	2010	2011	2012	2013	2014	2015	2016	2017	2018
First-time applicant	England	-11%	15%	7%	-11%	4%	10%	11%	10%	0%	-8%
	Northern Ireland	-35%	-14%	-21%	-29%	-21%	-5%	-6%	4%	0%	-3%
	Scotland	-25%	6%	-14%	-11%	-12%	-8%	-4%	0%	0%	6%
	Wales	-18%	5%	1%	-3%	6%	12%	8%	15%	0%	0%
	UK	-12%	13%	5%	-11%	3%	9%	10%	9%	0%	-7%
Previously applied	England	-23%	6%	49%	10%	18%	10%	11%	9%	0%	0%
	Northern Ireland	-61%	-38%	3%	-10%	2%	-9%	-6%	12%	0%	-10%
	Scotland	-56%	-37%	6%	7%	5%	1%	3%	8%	0%	-0%
	Wales	-30%	-9%	44%	45%	15%	13%	15%	12%	0%	-12%
	UK	-28%	-2%	42%	10%	15%	8%	9%	10%	0%	-1%
All	England	-14%	12%	18%	-5%	8%	10%	11%	10%	0%	-6%
	Northern Ireland	-48%	-26%	-9%	-20%	-10%	-7%	-6%	8%	0%	-6%
	Scotland	-37%	-11%	-5%	-3%	-5%	-4%	-1%	3%	0%	3%
	Wales	-21%	1%	12%	9%	9%	12%	10%	14%	0%	-3%
	UK	-17%	9%	16%	-5%	6%	9%	10%	9%	0%	-5%

D.3.13 Technical notes and definitions

Applicants have been able to submit applications for all 2018 courses since early September.

Applicants who submit their applications to UCAS by the January deadline are considered as 'on time' applicants for the large majority of courses offered through UCAS.

This statistical release covers all Main Scheme applicants who submit their applications to UCAS by the January deadline, including those who have applied for courses with a 15 October deadline. Counts of RPAs (records of prior acceptance) are not included.

Counts of the number of applicants reported have been rounded to the nearest 10 applicants, this may result in instances where totals do not equal the sum of the components. Proportional changes have been rounded to the nearest whole percentage point.

In 2009, the Canary Islands classification changed from Not EU to EU (excluding UK). In order to present an accurate time series, the Canary Islands have been consistently classified as EU (excluding UK). This will result in differences with data published prior to 2010.

Age

This statistical release uses country-specific age definitions which align with the cut off points for school/college cohorts within the different administrations of the UK. For England and Wales ages are defined on the 31 August, for Northern Ireland on the 1 July and for Scotland on the 28 February the following year. Defining ages in this way matches the assignment of children to school cohorts. For applicants outside of the UK the cohort cut off for England and Wales has been used.

Applicant

A person who has made an application in the UCAS system during the cycle reported (including applications for deferred entry). Records of prior acceptance (RPAs) are excluded.

Application

An application to a course at a provider made by an applicant in the UCAS main scheme. Applicants may make up to five main scheme applications.

Country of provider

An applicant may be counted once for each provider country they have applied to in the main scheme. If an applicant has applied to providers in multiple countries then the applicant is counted once within each country of provider applied to.

Domicile

Declared area of permanent residence. The Channel Islands and the Isle of Man have been assigned as 'Not EU'.

Ethnic group

High level grouping of ethnic origin as declared by the applicant: 'Asian', 'Black', 'Mixed', 'White', 'Other', 'Unknown'.

First time applicant

An applicant that did not apply to the UCAS scheme in the previous cycle.

Main scheme

The main UCAS application scheme through which up to five providers/courses can be applied to. This opens in September and closes to new applications on 30 June the following year.

Reapplicant

An applicant that applied to the UCAS scheme in the previous cycle.

Sex

As declared by the applicant.

SIMD 2016

Scottish Index of Multiple Deprivation identifies small area concentrations of multiple deprivation across all of Scotland, providing a relative measure of deprivation among small areas (data zones). In this report, the SIMD 2016 has been used to group areas in each year in the times series.

POLAR3

Developed by HEFCE and classifies small areas across the UK into five groups, according to their level of young participation in HE. Each of these groups represents around 20 per cent of young people, and is ranked from quintile 1 (areas with the lowest young participation rates, considered as the most disadvantaged) to quintile 5 (highest young participation rates, considered most advantaged).

POLAR4

Developed by HEFCE and classifies small areas across the UK into five groups, according to their level of young participation in HE. Each of these groups represents around 20 per cent of young people, and is ranked from quintile 1 (areas with the lowest young participation rates, considered as the most disadvantaged) to quintile 5 (highest young participation rates, considered most advantaged). POLAR4 is the most recent version of the POLAR classification, and is available for the first time in UCAS' reporting since its launch in 2017.

Tariff Group of provider

Providers are grouped as higher, medium or lower tariff based on their average levels of attainment of their accepted applicants (summarised through UCAS Tariff points) in recent cycles. Each group of providers accounted for around a third of all UK 18 year old acceptances in recent cycles.

Subject group

The JACS3 classification used to classify courses into subject groups.