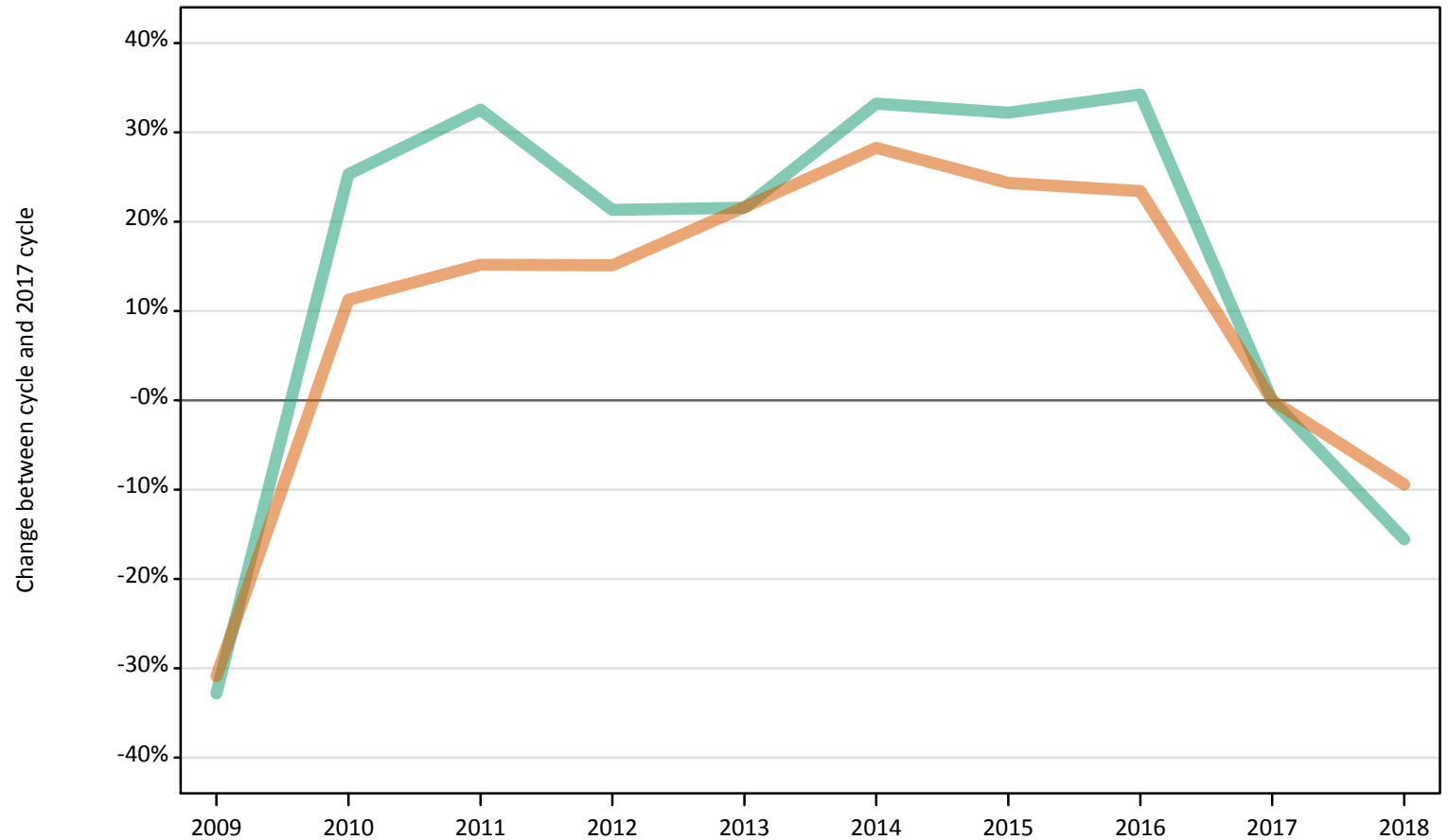


# January Deadline Analysis: Sex and age

## Nursing applicants by sex and age at the 15 January deadline

DB.2.1 Applicants by sex: All domiciles  
Difference between cycle and 2017 cycle

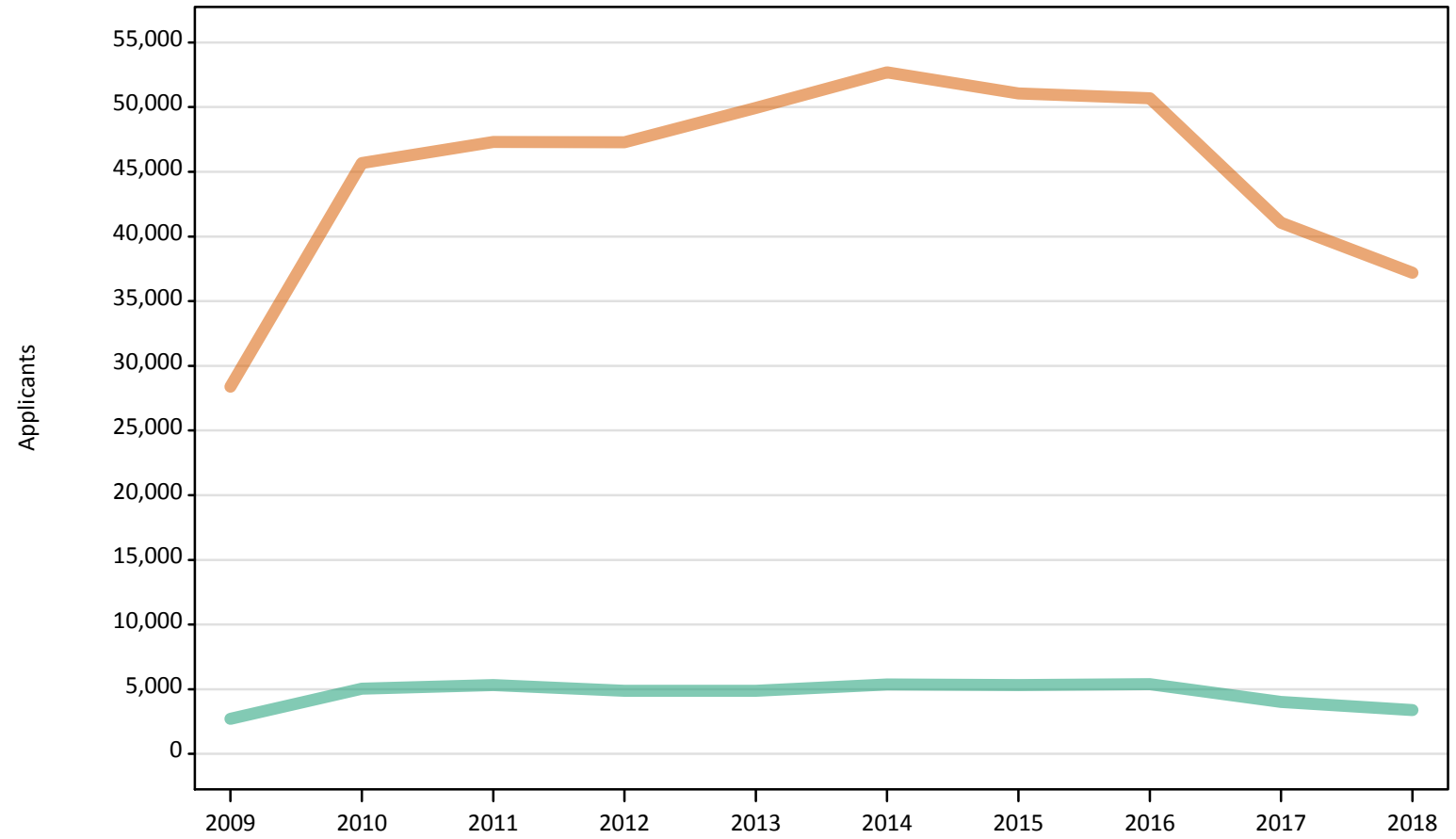
Men  
Women



Note: The percentage change is not plotted in the above charts for groups with fewer than 500 applicants in any one cycle.

## DB.2.2 Applicants by sex: All domiciles

Men  
Women



### DB.2.3 Applicants by age and sex: All domiciles

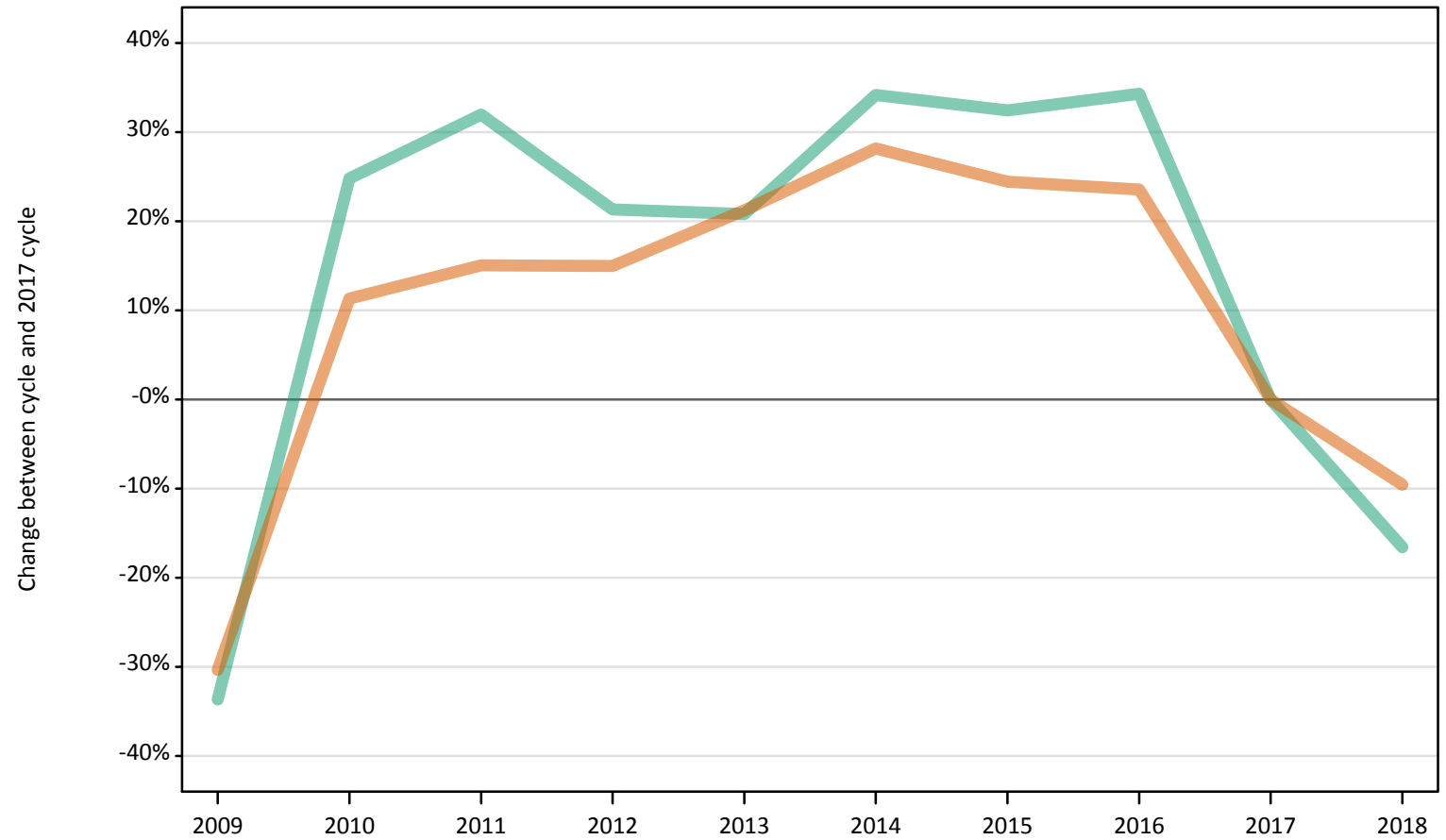
Age group and sex		2009	2010	2011	2012	2013	2014	2015	2016	2017	2018
Under 18	Men										
	Women										
18	Men	370	550	550	530	520	550	560	550	510	530
	Women	7,780	10,330	10,600	11,250	11,610	11,790	12,160	11,930	10,880	10,580
19	Men	250	370	430	390	420	440	460	440	360	330
	Women	3,480	5,370	5,940	5,610	6,440	6,740	6,410	6,500	5,370	4,800
20-24	Men	670	1,170	1,270	1,140	1,140	1,290	1,190	1,140	830	730
	Women	7,070	11,970	12,310	12,540	13,520	14,440	13,620	12,640	9,940	8,770
25-29	Men	460	870	890	800	900	910	870	850	630	500
	Women	3,680	6,500	6,840	6,770	7,230	7,780	7,500	7,520	5,490	4,720
30-34	Men	310	680	730	660	670	680	650	690	450	330
	Women	2,390	4,260	4,590	4,440	4,630	4,870	4,530	4,690	3,580	3,200
35 and over	Men	640	1,380	1,450	1,350	1,240	1,470	1,580	1,730	1,260	970
	Women	3,870	6,920	6,810	6,540	6,380	6,930	6,730	7,280	5,700	5,050
All	Men	2,700	5,040	5,330	4,880	4,890	5,360	5,320	5,400	4,020	3,400
	Women	28,390	45,680	47,310	47,280	49,950	52,680	51,070	50,680	41,070	37,210

**DB.2.4 Applicants by age and sex: All domiciles**  
 Difference between cycle and 2017 cycle

Age group and sex		2009	2010	2011	2012	2013	2014	2015	2016	2017	2018
Under 18	Men										
	Women										
18	Men	-27%	9%	10%	4%	2%	9%	10%	8%	0%	5%
	Women	-29%	-5%	-3%	3%	7%	8%	12%	10%	0%	-3%
19	Men	-30%	5%	20%	9%	19%	25%	28%	24%	0%	-6%
	Women	-35%	0%	11%	5%	20%	26%	19%	21%	0%	-11%
20-24	Men	-18%	42%	54%	39%	38%	57%	45%	38%	0%	-11%
	Women	-29%	20%	24%	26%	36%	45%	37%	27%	0%	-12%
25-29	Men	-26%	39%	42%	27%	43%	46%	39%	36%	0%	-21%
	Women	-33%	18%	25%	23%	32%	42%	37%	37%	0%	-14%
30-34	Men	-31%	53%	63%	48%	50%	52%	45%	54%	0%	-26%
	Women	-33%	19%	28%	24%	29%	36%	27%	31%	0%	-11%
35 and over	Men	-49%	10%	16%	8%	-1%	17%	26%	38%	0%	-23%
	Women	-32%	21%	20%	15%	12%	22%	18%	28%	0%	-11%
All	Men	-33%	25%	33%	21%	22%	33%	32%	34%	0%	-16%
	Women	-31%	11%	15%	15%	22%	28%	24%	23%	0%	-9%

**DB.2.5 Applicants by sex: UK**  
Difference between cycle and 2017 cycle

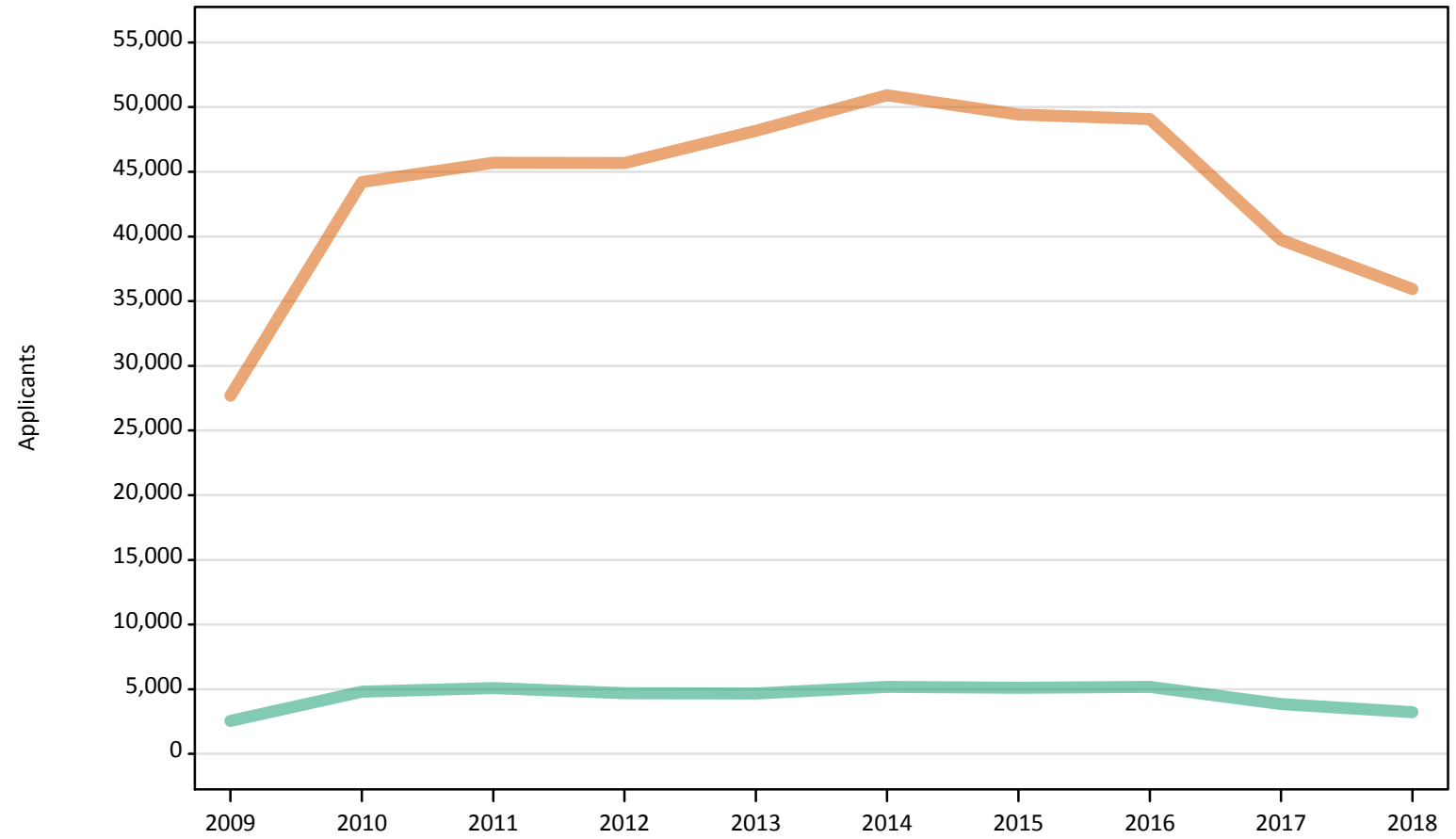
Men  
Women



Note: The percentage change is not plotted in the above charts for groups with fewer than 500 applicants in any one cycle.

## DB.2.6 Applicants by sex: UK

Men  
Women



## DB.2.7 Applicants by age and sex: UK

Age group and sex		2009	2010	2011	2012	2013	2014	2015	2016	2017	2018
Under 18	Men										
	Women										
18	Men	360	530	540	500	490	520	530	510	480	500
	Women	7,610	10,000	10,240	10,860	11,160	11,400	11,800	11,540	10,580	10,280
19	Men	230	350	400	370	400	420	420	410	330	300
	Women	3,350	5,030	5,610	5,260	6,050	6,330	6,030	6,120	5,050	4,500
20-24	Men	630	1,100	1,190	1,080	1,070	1,230	1,130	1,080	780	690
	Women	6,860	11,560	11,840	12,080	12,970	13,880	13,110	12,160	9,510	8,370
25-29	Men	430	820	850	770	860	880	840	830	610	470
	Women	3,600	6,350	6,630	6,610	7,030	7,600	7,300	7,370	5,380	4,610
30-34	Men	290	650	690	640	650	660	630	670	430	300
	Women	2,340	4,180	4,520	4,370	4,570	4,800	4,480	4,640	3,520	3,130
35 and over	Men	630	1,350	1,420	1,330	1,210	1,460	1,550	1,690	1,230	940
	Women	3,830	6,860	6,740	6,460	6,320	6,840	6,660	7,200	5,630	5,000
All	Men	2,560	4,820	5,090	4,680	4,660	5,180	5,110	5,180	3,860	3,220
	Women	27,680	44,220	45,710	45,680	48,160	50,910	49,430	49,080	39,730	35,930

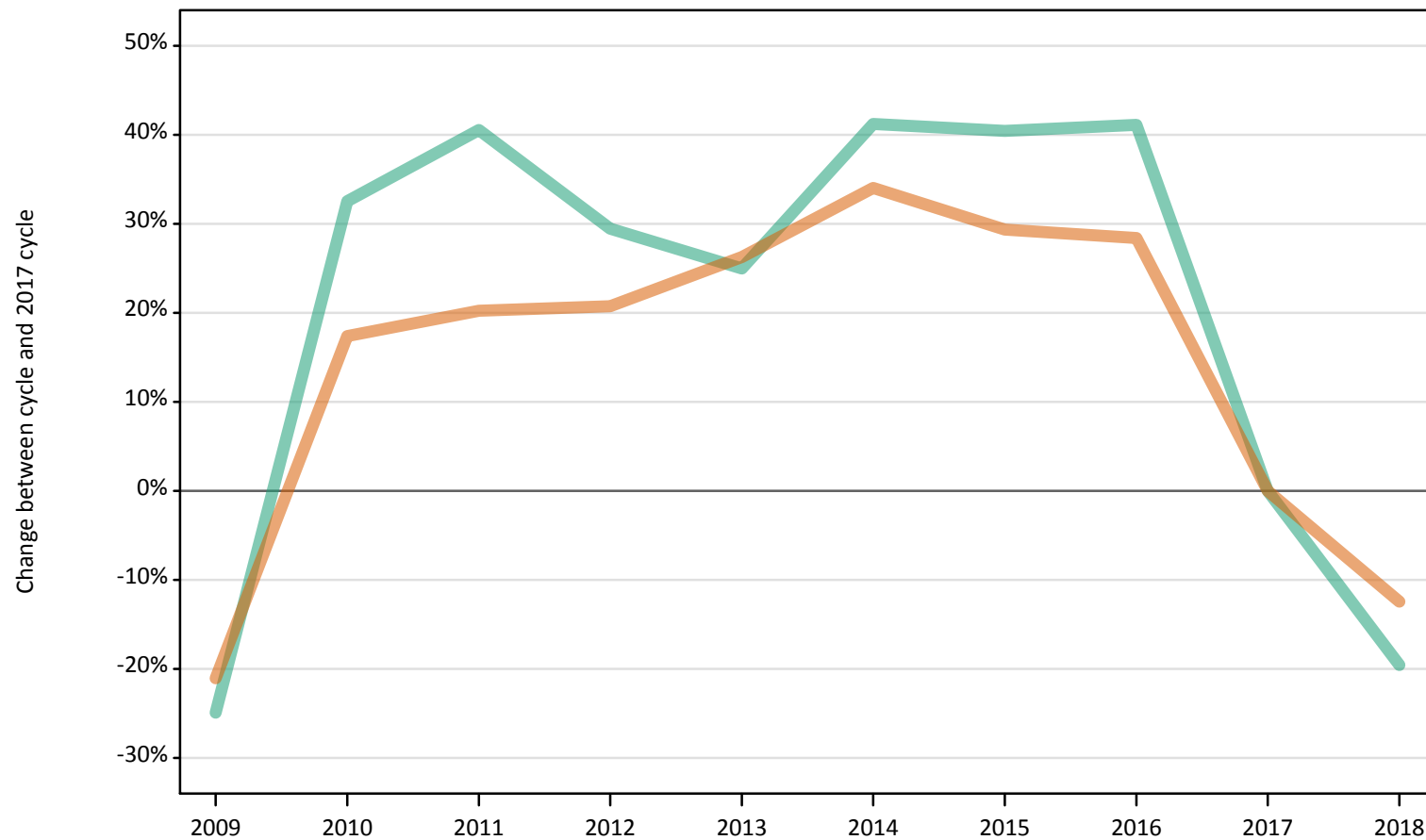
**DB.2.8 Applicants by age and sex: UK**  
 Difference between cycle and 2017 cycle

Age group and sex		2009	2010	2011	2012	2013	2014	2015	2016	2017	2018
Under 18	Men										
	Women										
18	Men	-24%	11%	13%	4%	2%	10%	11%	7%	0%	5%
	Women	-28%	-6%	-3%	3%	5%	8%	11%	9%	0%	-3%
19	Men	-29%	5%	21%	11%	20%	26%	29%	23%	0%	-8%
	Women	-34%	-0%	11%	4%	20%	25%	19%	21%	0%	-11%
20-24	Men	-20%	41%	53%	39%	37%	58%	46%	39%	0%	-11%
	Women	-28%	22%	24%	27%	36%	46%	38%	28%	0%	-12%
25-29	Men	-30%	35%	40%	27%	41%	46%	39%	36%	0%	-22%
	Women	-33%	18%	23%	23%	31%	41%	36%	37%	0%	-14%
30-34	Men	-34%	51%	58%	47%	50%	53%	45%	55%	0%	-30%
	Women	-33%	19%	28%	24%	30%	37%	27%	32%	0%	-11%
35 and over	Men	-49%	9%	15%	8%	-2%	18%	26%	37%	0%	-24%
	Women	-32%	22%	20%	15%	12%	22%	18%	28%	0%	-11%
All	Men	-34%	25%	32%	21%	21%	34%	32%	34%	0%	-17%
	Women	-30%	11%	15%	15%	21%	28%	24%	24%	0%	-10%



**DB.2.9 Applicants by sex: England**  
Difference between cycle and 2017 cycle

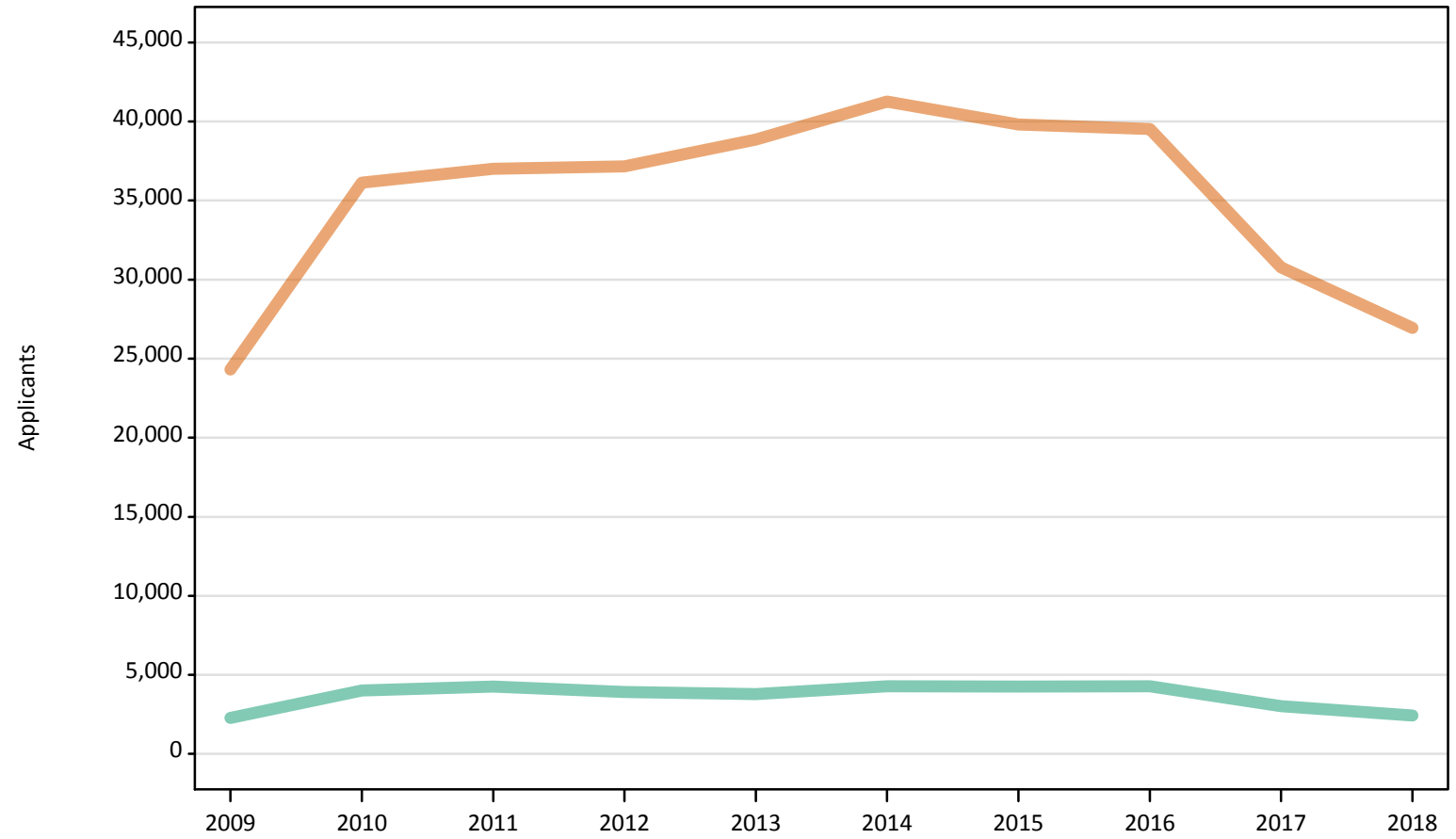
Men  
Women



Note: The percentage change is not plotted in the above charts for groups with fewer than 500 applicants in any one cycle.

## DB.2.10 Applicants by sex: England

Men  
Women



## DB.2.11 Applicants by age and sex: England

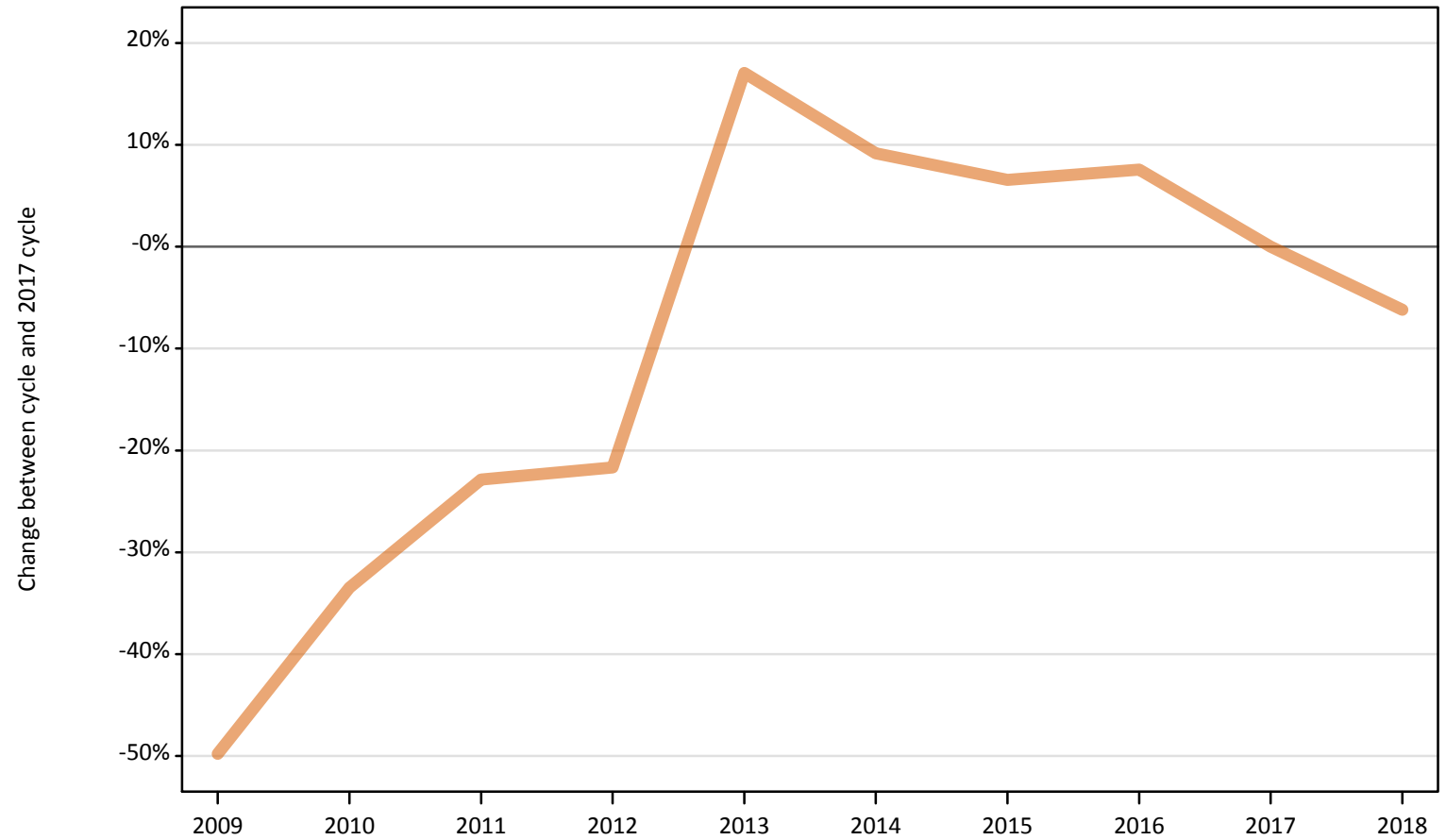
Age group and sex		2009	2010	2011	2012	2013	2014	2015	2016	2017	2018
Under 18	Men										
	Women										
18	Men	290	400	400	370	330	370	380	370	330	370
	Women	6,170	7,520	7,730	8,260	8,570	8,820	9,110	8,970	8,070	7,820
19	Men	200	290	330	300	310	330	360	300	250	230
	Women	2,990	4,080	4,530	4,200	4,880	5,170	4,930	4,940	3,980	3,440
20-24	Men	550	910	980	870	850	990	920	870	580	510
	Women	6,130	9,600	9,590	9,880	10,430	11,250	10,550	9,700	7,350	6,260
25-29	Men	380	670	690	620	680	720	680	650	440	320
	Women	3,240	5,330	5,470	5,470	5,730	6,100	5,820	5,940	4,070	3,310
30-34	Men	270	560	590	550	550	560	530	560	330	210
	Women	2,130	3,570	3,810	3,740	3,820	4,000	3,690	3,810	2,680	2,260
35 and over	Men	580	1,180	1,270	1,210	1,080	1,320	1,390	1,530	1,090	800
	Women	3,560	5,880	5,800	5,600	5,430	5,880	5,690	6,150	4,620	3,850
All	Men	2,280	4,020	4,260	3,920	3,790	4,280	4,260	4,280	3,030	2,440
	Women	24,300	36,130	37,010	37,160	38,870	41,250	39,810	39,520	30,780	26,950

**DB.2.12 Applicants by age and sex: England**  
 Difference between cycle and 2017 cycle

Age group and sex		2009	2010	2011	2012	2013	2014	2015	2016	2017	2018
Under 18	Men										
	Women										
18	Men	-12%	20%	20%	12%	-1%	10%	15%	11%	0%	12%
	Women	-24%	-7%	-4%	2%	6%	9%	13%	11%	0%	-3%
19	Men	-21%	14%	31%	17%	22%	28%	40%	19%	0%	-11%
	Women	-25%	2%	14%	5%	22%	30%	24%	24%	0%	-14%
20-24	Men	-4%	58%	69%	51%	46%	72%	59%	51%	0%	-12%
	Women	-17%	31%	30%	34%	42%	53%	44%	32%	0%	-15%
25-29	Men	-14%	50%	55%	40%	52%	62%	53%	47%	0%	-28%
	Women	-20%	31%	34%	34%	41%	50%	43%	46%	0%	-19%
30-34	Men	-19%	69%	77%	65%	66%	69%	60%	68%	0%	-37%
	Women	-20%	33%	42%	40%	43%	49%	38%	42%	0%	-16%
35 and over	Men	-47%	8%	17%	11%	-1%	21%	28%	40%	0%	-27%
	Women	-23%	27%	26%	21%	18%	27%	23%	33%	0%	-17%
All	Men	-25%	33%	41%	29%	25%	41%	40%	41%	0%	-20%
	Women	-21%	17%	20%	21%	26%	34%	29%	28%	0%	-12%

**DB.2.13 Applicants by sex: Northern Ireland**  
Difference between cycle and 2017 cycle

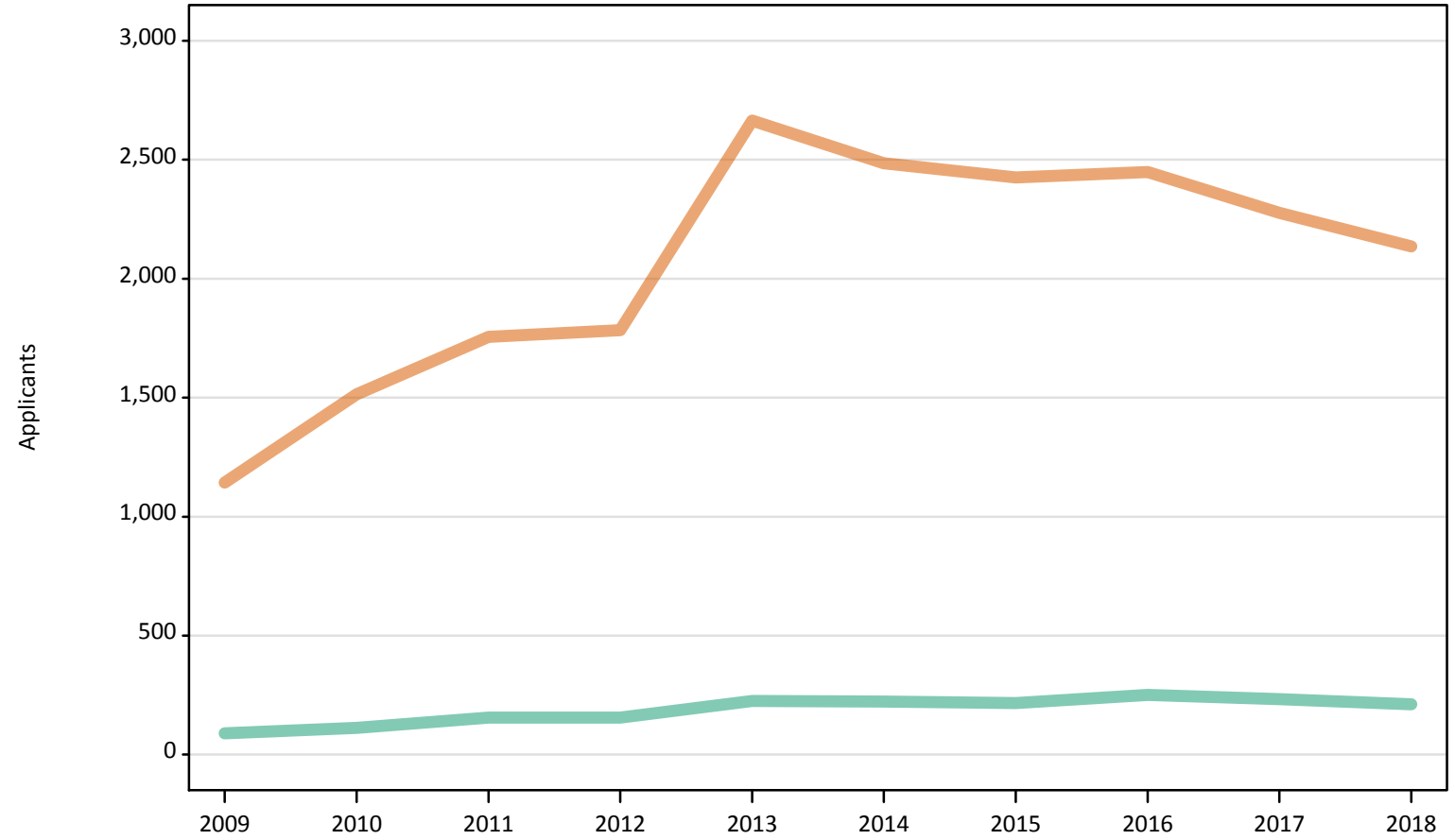
Men  
Women



Note: The percentage change is not plotted in the above charts for groups with fewer than 500 applicants in any one cycle.

## DB.2.14 Applicants by sex: Northern Ireland

Men  
Women



**DB.2.15 Applicants by age and sex: Northern Ireland**

Age group and sex		2009	2010	2011	2012	2013	2014	2015	2016	2017	2018
Under 18	Men										
	Women										
18	Men	40	20	50	40	60	60	50	50	70	70
	Women	690	770	840	890	930	830	850	830	820	820
19	Men	0	10	10	30	30	30	30	40	40	30
	Women	140	200	260	270	400	370	330	370	350	310
20-24	Men	20	30	40	40	50	60	50	60	60	50
	Women	180	310	390	390	730	680	660	620	560	500
25-29	Men	10	20	20	20	40	40	30	40	30	30
	Women	80	120	140	130	290	310	290	300	230	220
30-34	Men	10	10	20	10	20	10	20	20	20	20
	Women	30	50	60	60	160	170	150	160	150	130
35 and over	Men	10	20	10	10	20	20	30	30	20	10
	Women	30	70	70	50	160	130	150	160	160	150
All	Men	90	110	160	160	230	220	220	250	230	210
	Women	1,140	1,510	1,760	1,780	2,660	2,490	2,430	2,450	2,280	2,140

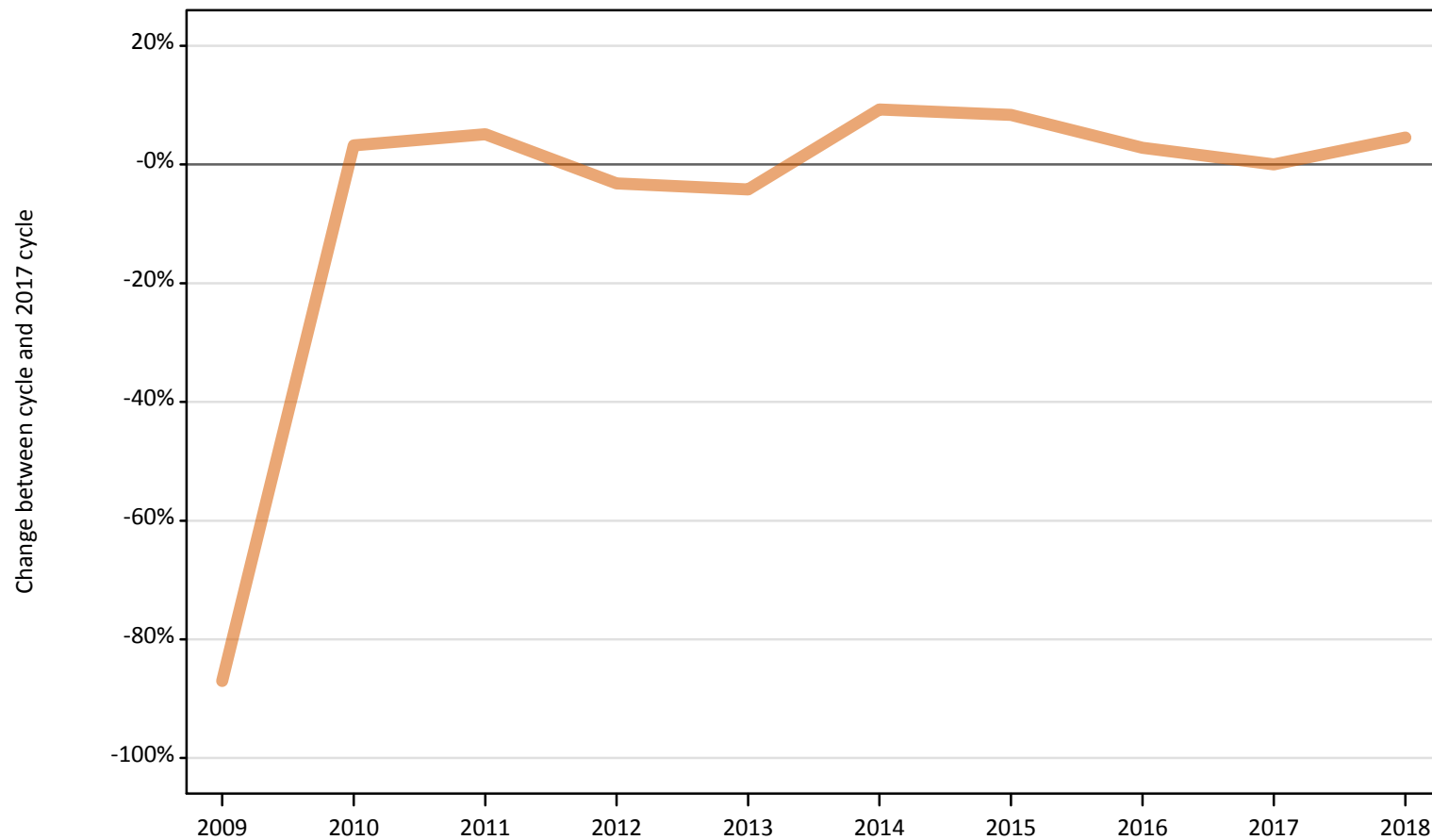
**DB.2.16 Applicants by age and sex: Northern Ireland**  
 Difference between cycle and 2017 cycle

Age group and sex		2009	2010	2011	2012	2013	2014	2015	2016	2017	2018
Under 18	Men										
	Women										
18	Men	-50%	-70%	-26%	-37%	-13%	-14%	-23%	-27%	0%	0%
	Women	-15%	-6%	2%	8%	13%	1%	3%	1%	0%	0%
19	Men	-89%	-71%	-69%	-20%	-17%	-17%	-11%	20%	0%	-3%
	Women	-61%	-44%	-25%	-24%	13%	5%	-7%	5%	0%	-11%
20-24	Men	-67%	-45%	-30%	-42%	-13%	7%	-17%	3%	0%	-18%
	Women	-69%	-44%	-31%	-31%	29%	21%	16%	10%	0%	-10%
25-29	Men	-66%	-38%	-31%	-34%	34%	13%	0%	34%	0%	-13%
	Women	-66%	-48%	-41%	-45%	23%	33%	25%	27%	0%	-5%
30-34	Men	-65%	-50%	-20%	-30%	0%	-40%	10%	15%	0%	-20%
	Women	-80%	-68%	-60%	-61%	10%	14%	2%	12%	0%	-12%
35 and over	Men	-19%	19%	-25%	-19%	31%	31%	69%	88%	0%	-13%
	Women	-84%	-59%	-59%	-66%	0%	-18%	-6%	2%	0%	-10%
All	Men	-61%	-52%	-33%	-33%	-3%	-4%	-7%	8%	0%	-9%
	Women	-50%	-33%	-23%	-22%	17%	9%	7%	8%	0%	-6%



**DB.2.17 Applicants by sex: Scotland**  
Difference between cycle and 2017 cycle

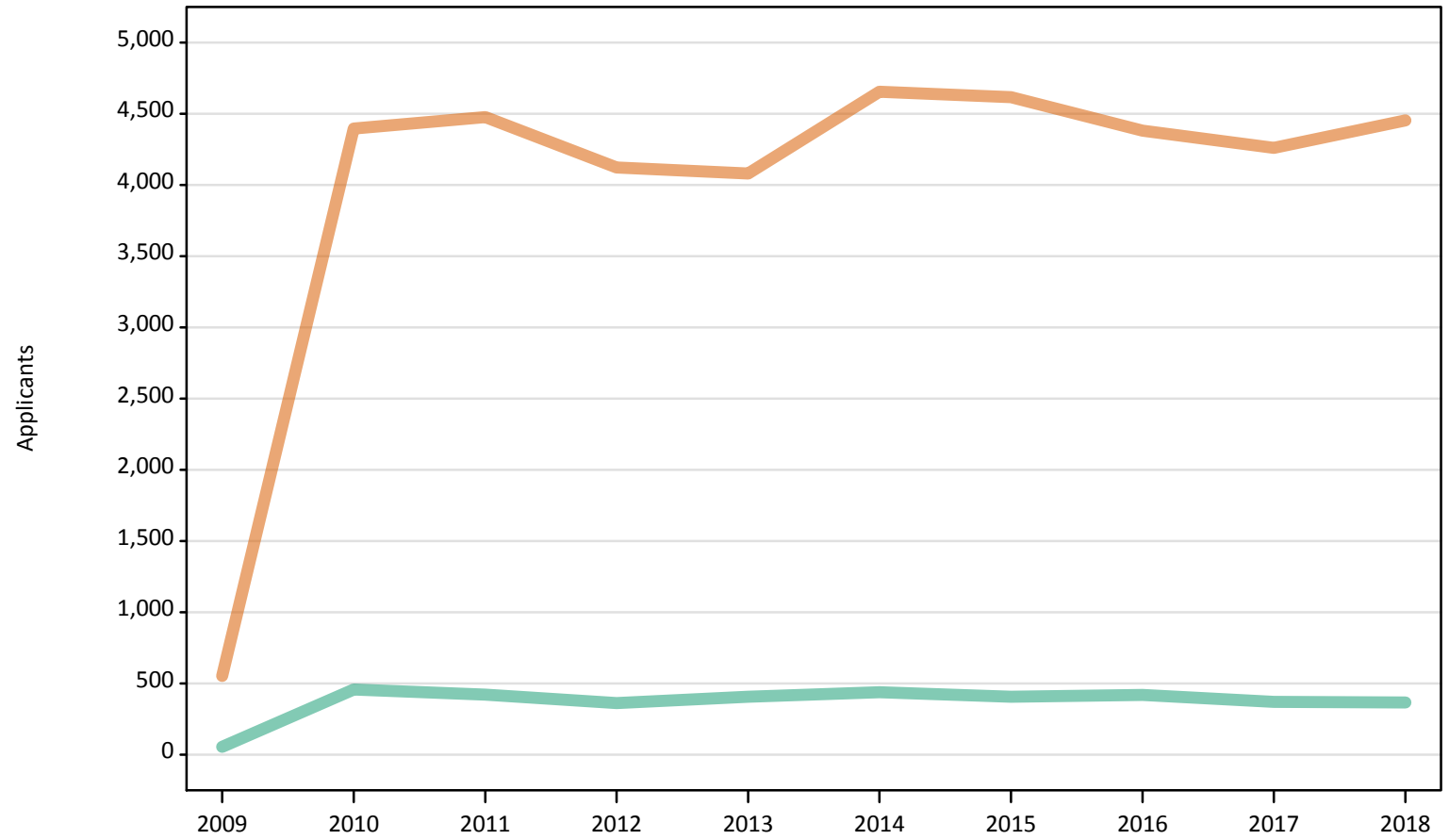
Men  
Women



Note: The percentage change is not plotted in the above charts for groups with fewer than 500 applicants in any one cycle.

## DB.2.18 Applicants by sex: Scotland

Men  
Women



## DB.2.19 Applicants by age and sex: Scotland

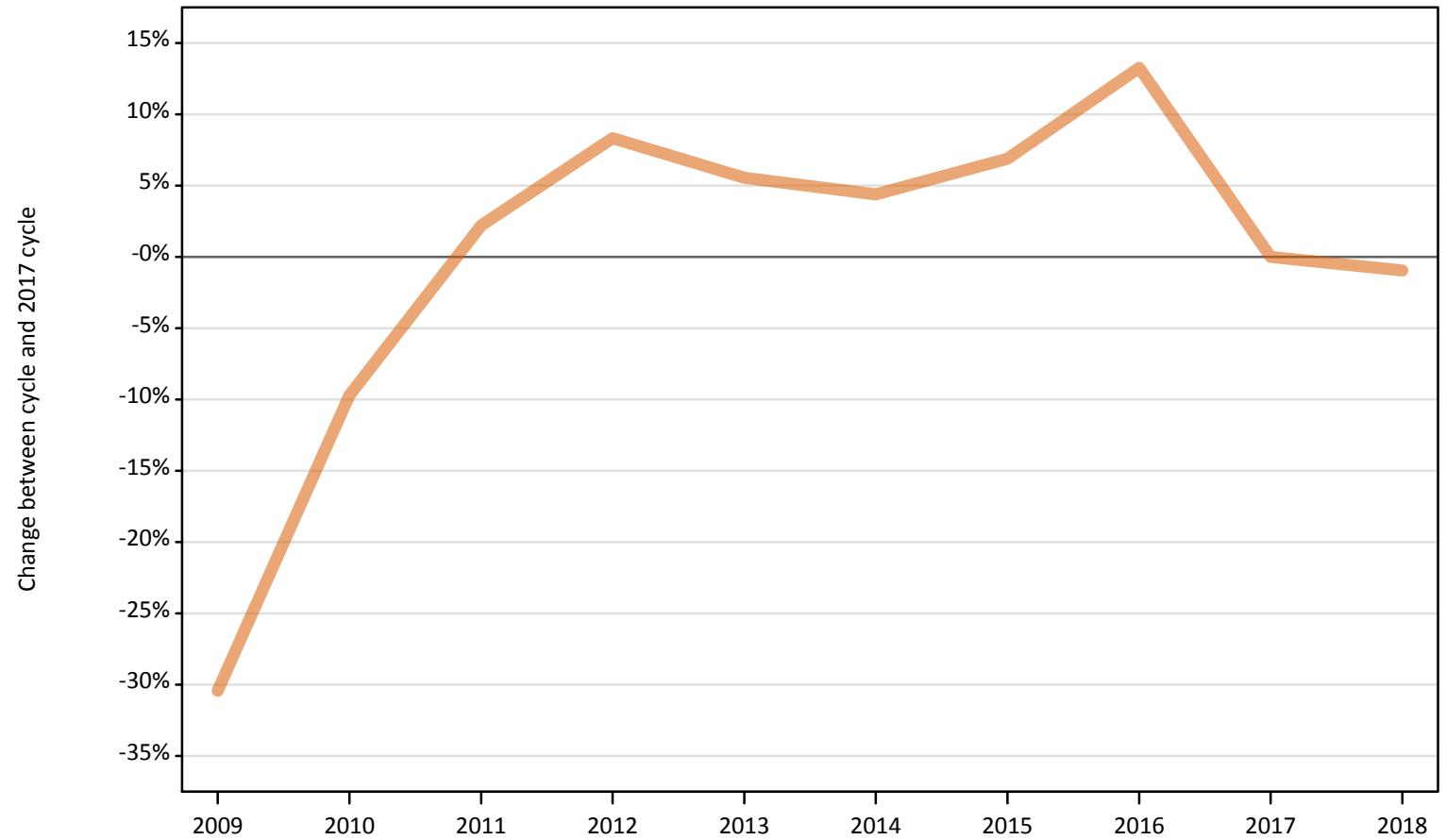
Age group and sex		2009	2010	2011	2012	2013	2014	2015	2016	2017	2018
Under 18	Men										
	Women										
18	Men	10	70	60	60	70	70	60	70	40	40
	Women	290	1,130	1,130	1,150	1,090	1,170	1,200	1,090	1,090	1,060
19	Men	10	30	30	20	40	40	20	40	20	20
	Women	60	510	490	500	490	510	480	490	420	440
20-24	Men	20	100	100	90	90	100	110	90	90	80
	Women	110	1,090	1,200	1,070	1,100	1,250	1,180	1,070	990	1,040
25-29	Men	10	90	90	70	80	80	80	80	90	90
	Women	30	580	610	590	580	740	750	700	680	700
30-34	Men	0	60	60	50	50	60	40	60	60	50
	Women	20	350	420	320	330	400	430	410	450	470
35 and over	Men	0	100	90	70	70	90	90	80	80	90
	Women	30	650	570	470	450	550	550	590	580	700
All	Men	60	460	420	360	410	440	410	420	370	370
	Women	550	4,400	4,480	4,120	4,080	4,660	4,620	4,380	4,260	4,450

**DB.2.20 Applicants by age and sex: Scotland**  
 Difference between cycle and 2017 cycle

Age group and sex		2009	2010	2011	2012	2013	2014	2015	2016	2017	2018
Under 18	Men										
	Women										
18	Men	-78%	85%	48%	43%	78%	70%	55%	73%	0%	-8%
	Women	-73%	4%	4%	5%	0%	7%	10%	-0%	0%	-3%
19	Men	-48%	26%	35%	0%	70%	78%	0%	70%	0%	0%
	Women	-86%	20%	17%	17%	16%	20%	12%	16%	0%	4%
20-24	Men	-80%	14%	13%	-1%	7%	17%	20%	5%	0%	-8%
	Women	-89%	10%	21%	8%	11%	26%	19%	8%	0%	4%
25-29	Men	-87%	7%	4%	-14%	-6%	-6%	-6%	-7%	0%	4%
	Women	-95%	-14%	-10%	-13%	-14%	9%	10%	4%	0%	4%
30-34	Men	-98%	9%	5%	-15%	-15%	9%	-20%	13%	0%	-13%
	Women	-95%	-22%	-8%	-30%	-27%	-13%	-4%	-11%	0%	4%
35 and over	Men	-95%	28%	9%	-8%	-9%	9%	13%	-1%	0%	11%
	Women	-96%	12%	-2%	-20%	-23%	-5%	-6%	1%	0%	21%
All	Men	-85%	23%	13%	-2%	9%	18%	9%	13%	0%	-1%
	Women	-87%	3%	5%	-3%	-4%	9%	8%	3%	0%	5%

**DB.2.21 Applicants by sex: Wales**  
Difference between cycle and 2017 cycle

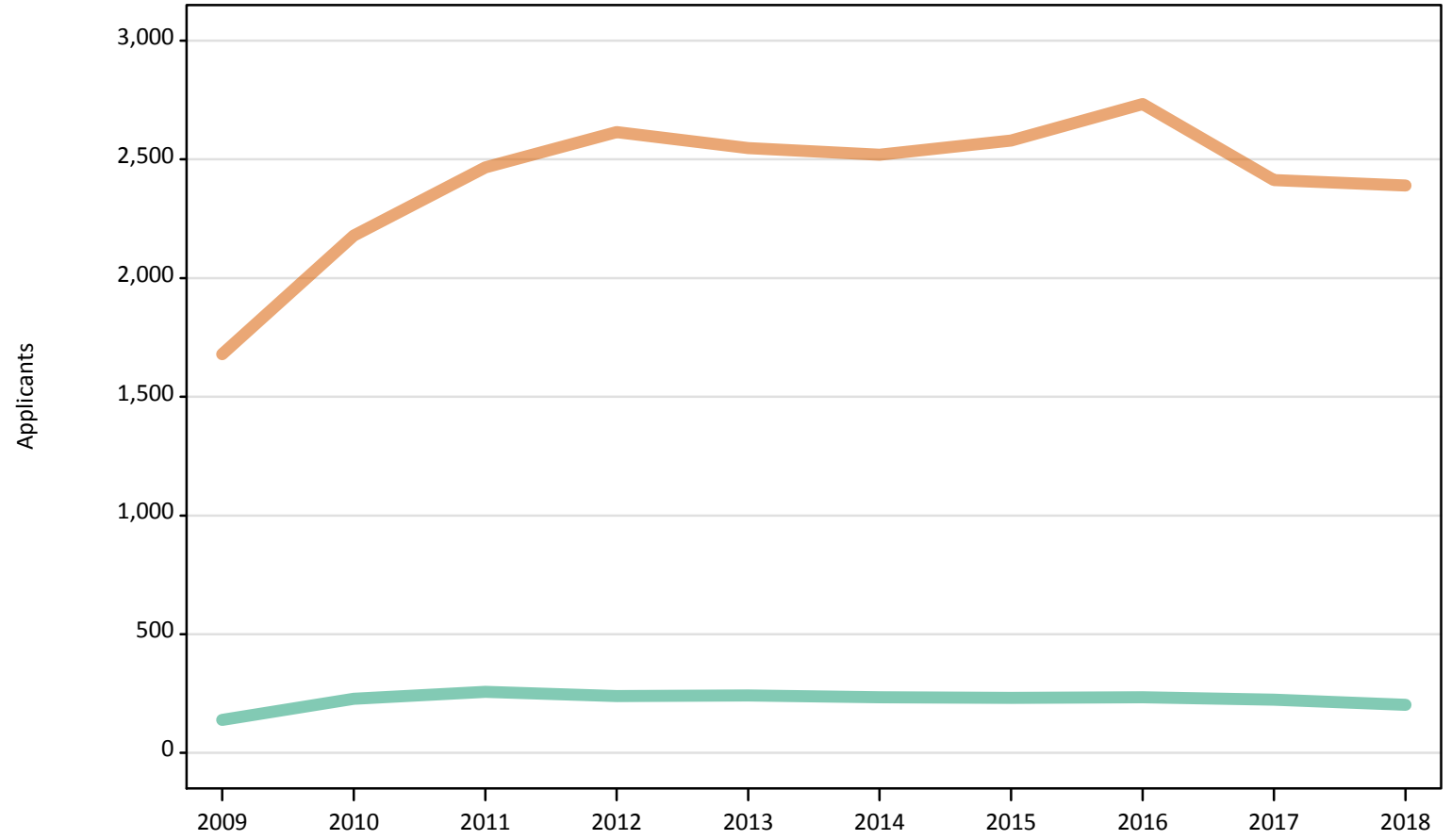
Men  
Women



Note: The percentage change is not plotted in the above charts for groups with fewer than 500 applicants in any one cycle.

DB.2.22 Applicants by sex: Wales

Men  
Women



**DB.2.23 Applicants by age and sex: Wales**

Age group and sex		2009	2010	2011	2012	2013	2014	2015	2016	2017	2018
Under 18	Men										
	Women										
18	Men	30	40	30	20	30	30	30	20	40	20
	Women	450	570	540	570	570	580	640	650	600	570
19	Men	20	20	20	20	20	20	20	20	20	20
	Women	170	250	320	300	280	280	300	320	300	300
20-24	Men	30	50	80	80	70	70	60	50	50	60
	Women	440	550	660	740	720	690	720	770	600	580
25-29	Men	20	40	50	50	60	50	50	50	50	40
	Women	240	330	410	430	430	450	440	430	410	380
30-34	Men	10	20	30	30	30	30	30	30	30	30
	Women	160	210	230	250	260	240	210	260	240	270
35 and over	Men	30	50	50	40	40	30	40	50	50	40
	Women	220	260	300	340	280	270	270	290	270	290
All	Men	140	230	260	240	240	240	230	240	220	200
	Women	1,680	2,180	2,470	2,610	2,550	2,520	2,580	2,730	2,410	2,390

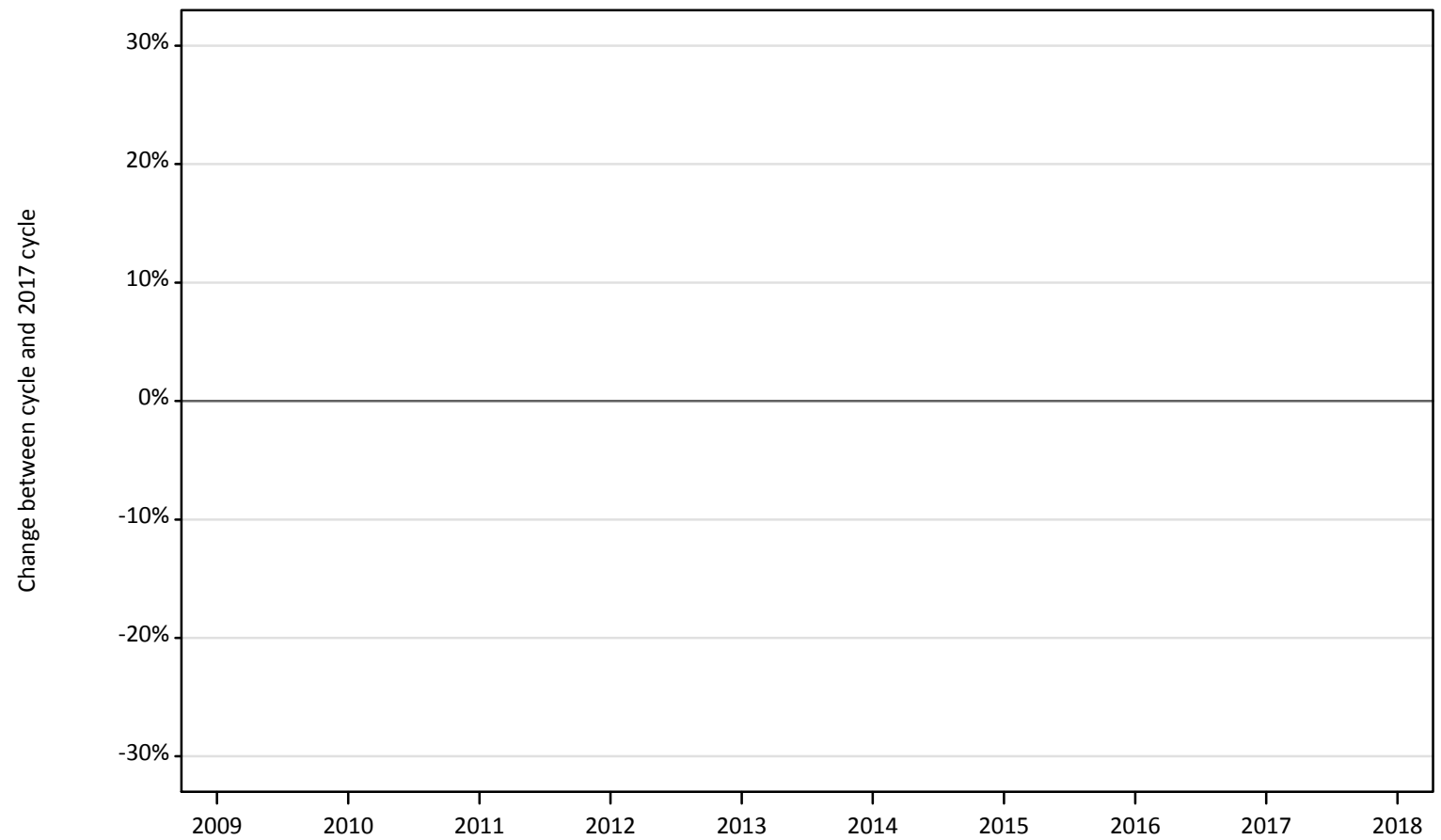
**DB.2.24 Applicants by age and sex: Wales**  
 Difference between cycle and 2017 cycle

Age group and sex		2009	2010	2011	2012	2013	2014	2015	2016	2017	2018
Under 18	Men										
	Women										
18	Men	-26%	6%	-23%	-34%	-29%	-14%	-17%	-31%	0%	-37%
	Women	-25%	-5%	-10%	-6%	-5%	-4%	6%	8%	0%	-6%
19	Men	-6%	6%	35%	-6%	0%	18%	-12%	35%	0%	24%
	Women	-44%	-16%	9%	0%	-5%	-4%	2%	8%	0%	2%
20-24	Men	-38%	2%	45%	57%	40%	40%	15%	-2%	0%	4%
	Women	-27%	-8%	10%	22%	20%	15%	20%	28%	0%	-4%
25-29	Men	-50%	-7%	13%	15%	24%	7%	13%	13%	0%	-24%
	Women	-40%	-19%	1%	6%	7%	10%	9%	6%	0%	-7%
30-34	Men	-63%	-15%	-7%	7%	22%	15%	19%	15%	0%	11%
	Women	-33%	-13%	-4%	4%	6%	-1%	-16%	8%	0%	12%
35 and over	Men	-33%	13%	15%	-22%	-22%	-33%	-7%	15%	0%	-13%
	Women	-19%	-0%	13%	26%	6%	3%	2%	11%	0%	11%
All	Men	-38%	2%	15%	7%	8%	5%	4%	5%	0%	-9%
	Women	-30%	-10%	2%	8%	6%	4%	7%	13%	0%	-1%



**DB.2.25 Applicants by sex: EU (excluding UK)**  
Difference between cycle and 2017 cycle

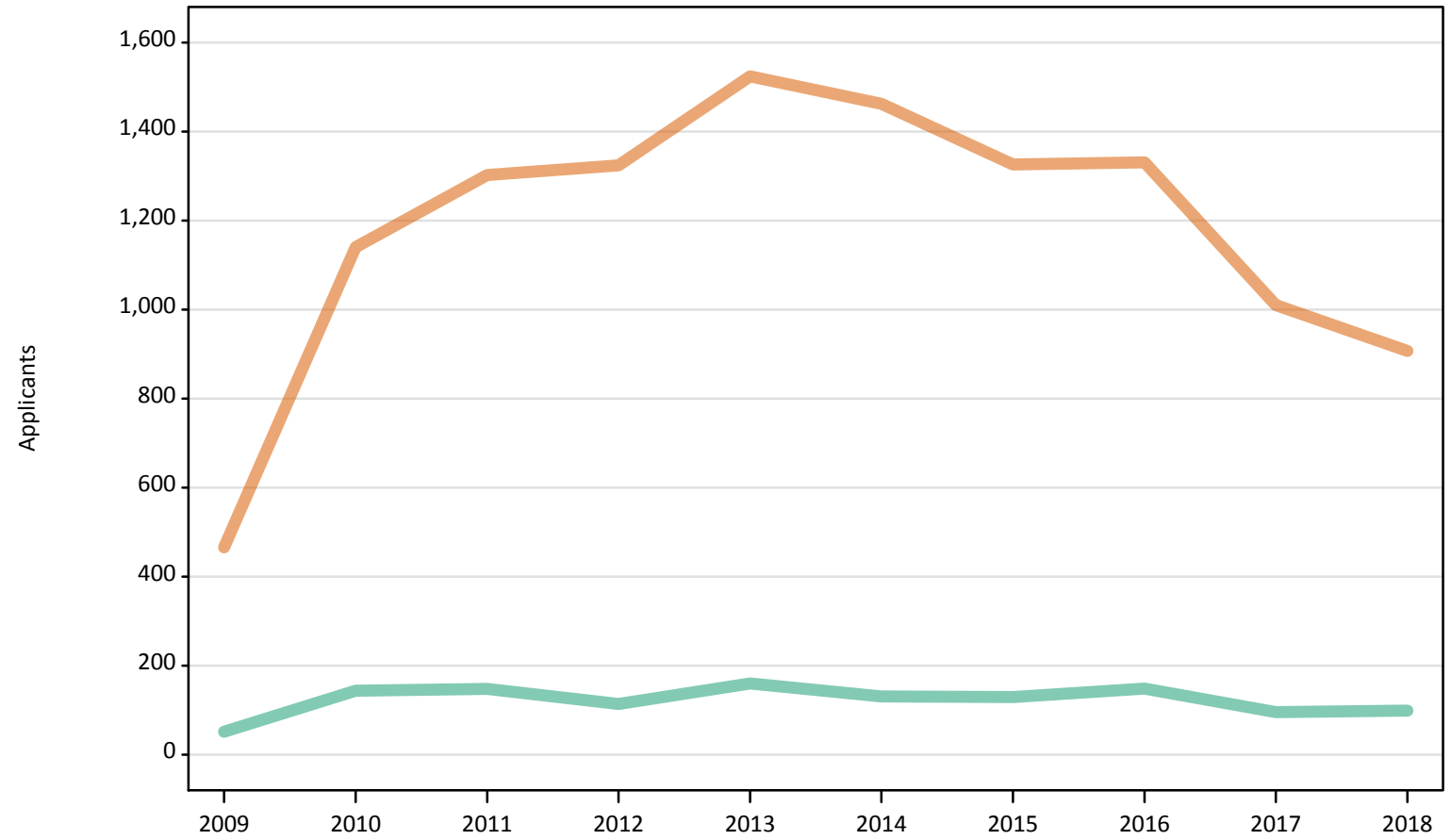
Men  
Women



Note: The percentage change is not plotted in the above charts for groups with fewer than 500 applicants in any one cycle.

## DB.2.26 Applicants by sex: EU (excluding UK)

Men  
Women



**DB.2.27 Applicants by age and sex: EU (excluding UK)**

Age group and sex		2009	2010	2011	2012	2013	2014	2015	2016	2017	2018
Under 18	Men										
	Women										
18	Men	10	20	10	20	30	20	20	30	20	20
	Women	140	310	320	330	390	340	300	340	230	220
19	Men	10	20	20	20	30	30	20	30	20	20
	Women	100	300	300	320	370	360	340	350	270	240
20-24	Men	20	50	50	40	50	50	40	50	30	30
	Women	140	310	390	390	470	450	430	400	340	290
25-29	Men	10	30	20	10	20	20	10	10	10	10
	Women	30	90	140	120	150	140	140	110	60	60
30-34	Men	10	20	20	10	10	10	10	10	0	10
	Women	10	40	40	40	40	40	30	30	30	20
35 and over	Men	10	10	20	10	20	10	20	20	20	10
	Women	10	20	30	50	40	50	40	50	30	30
All	Men	50	140	150	110	160	130	130	150	100	100
	Women	470	1,140	1,300	1,320	1,520	1,460	1,330	1,330	1,010	910

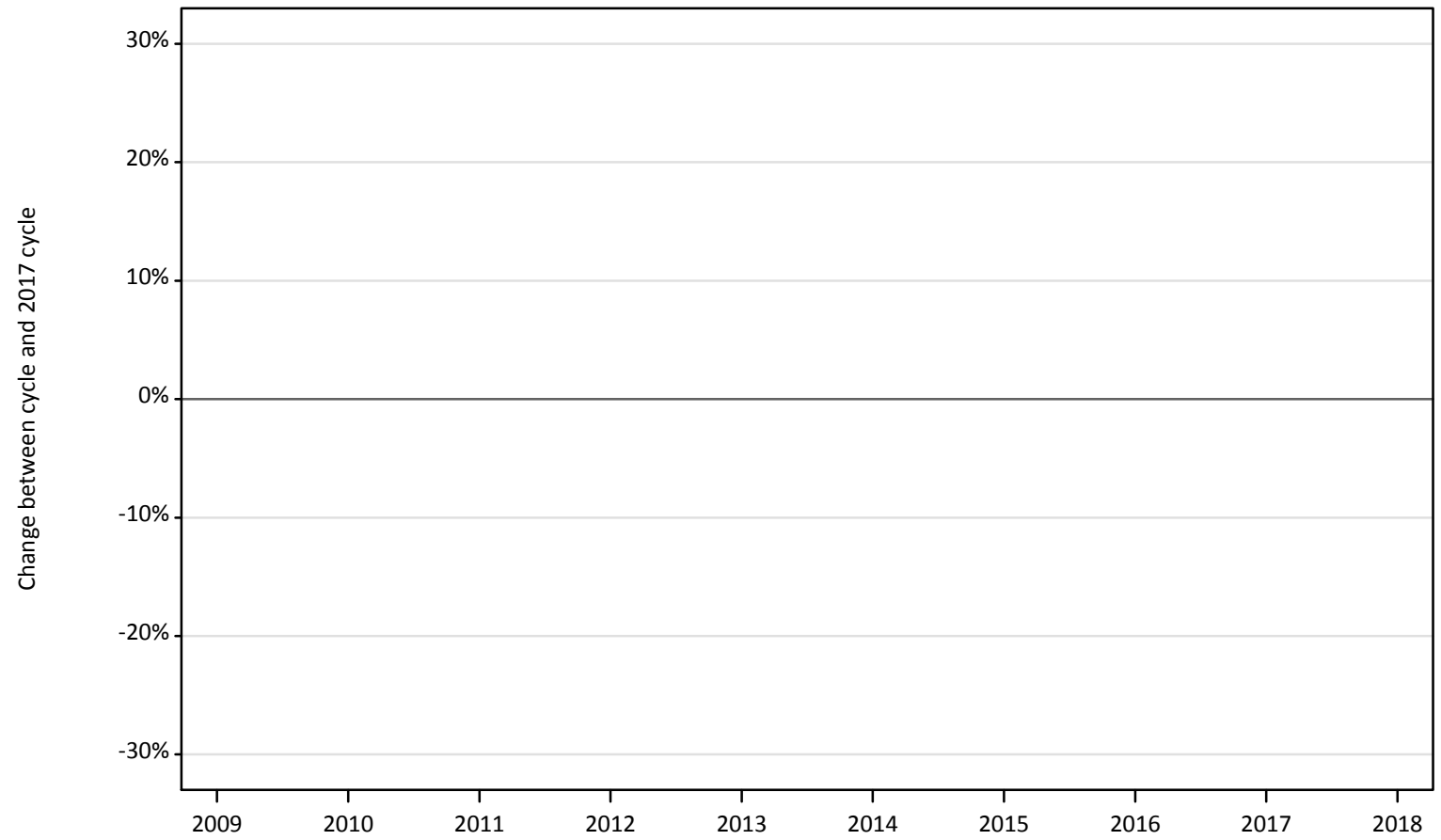
## DB.2.28 Applicants by age and sex: EU (excluding UK)

Difference between cycle and 2017 cycle

Age group and sex		2009	2010	2011	2012	2013	2014	2015	2016	2017	2018
Under 18	Men										
	Women										
18	Men	-74%	0%	-26%	16%	32%	11%	5%	42%	0%	-16%
	Women	-39%	33%	39%	44%	69%	46%	28%	46%	0%	-5%
19	Men	-45%	15%	10%	-25%	25%	25%	20%	25%	0%	20%
	Women	-63%	11%	11%	18%	34%	34%	24%	30%	0%	-11%
20-24	Men	-46%	64%	75%	39%	86%	68%	32%	71%	0%	-7%
	Women	-58%	-9%	15%	16%	40%	35%	27%	19%	0%	-12%
25-29	Men	-11%	178%	122%	44%	111%	111%	56%	56%	0%	11%
	Women	-45%	45%	131%	97%	135%	124%	118%	77%	0%	-8%
30-34	Men	600%	1500%	1600%	1000%	1100%	500%	600%	700%	0%	800%
	Women	-50%	42%	69%	50%	65%	69%	27%	0%	0%	-15%
35 and over	Men	-63%	-13%	13%	-19%	38%	-31%	25%	50%	0%	-13%
	Women	-68%	-29%	-6%	56%	18%	59%	24%	35%	0%	-26%
All	Men	-46%	50%	54%	19%	67%	36%	35%	55%	0%	3%
	Women	-54%	13%	29%	31%	51%	45%	31%	32%	0%	-10%

**DB.2.29 Applicants by sex: Not EU**  
Difference between cycle and 2017 cycle

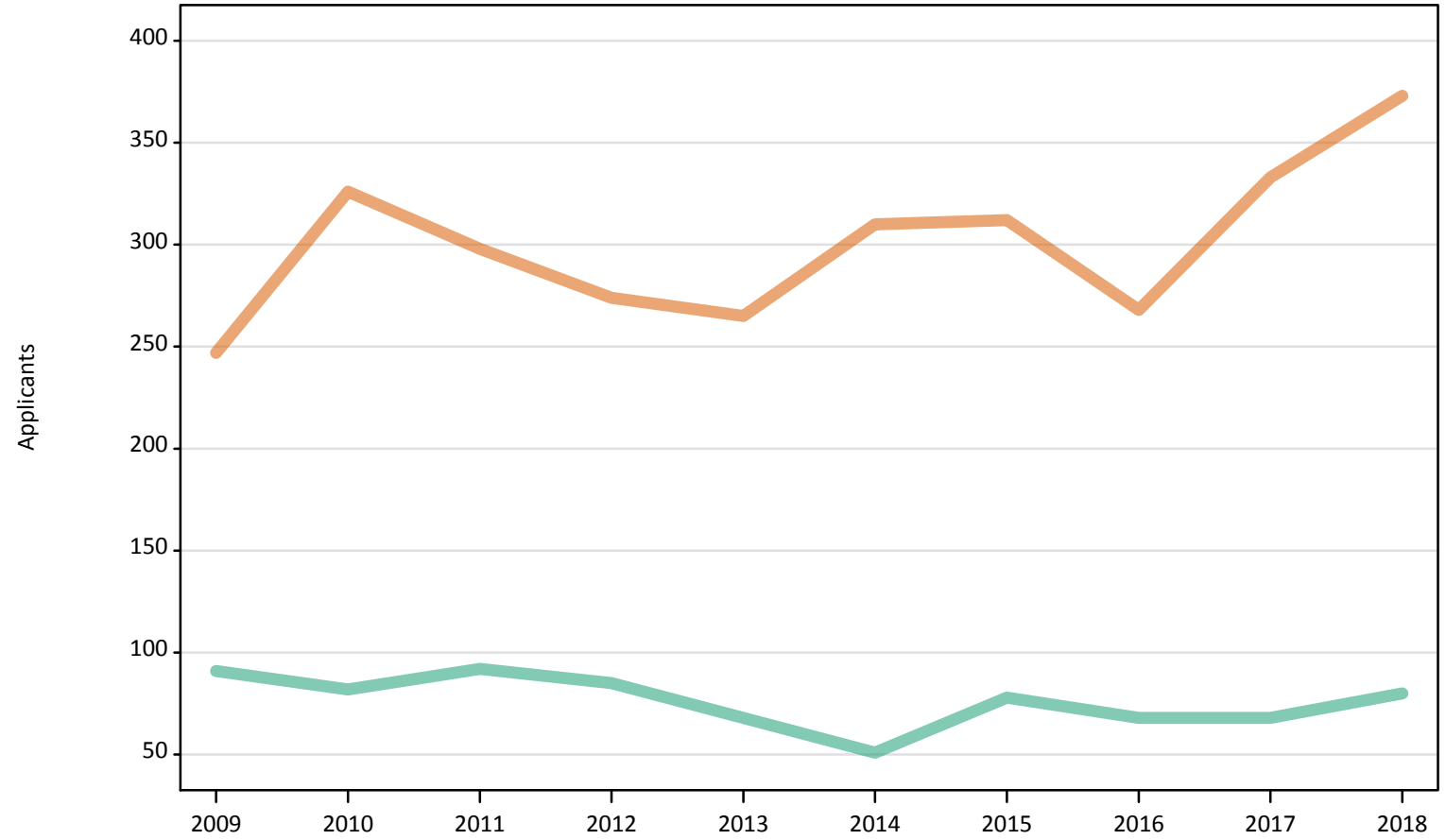
Men  
Women



Note: The percentage change is not plotted in the above charts for groups with fewer than 500 applicants in any one cycle.

## DB.2.30 Applicants by sex: Not EU

Men  
Women



**DB.2.31 Applicants by age and sex: Not EU**

Age group and sex		2009	2010	2011	2012	2013	2014	2015	2016	2017	2018
Under 18	Men										
	Women										
18	Men	0	0	0	10	10	10	10	10	10	10
	Women	30	30	30	60	50	50	70	50	70	80
19	Men	0	0	10	10	0	0	10	10	10	10
	Women	30	40	30	30	30	40	40	30	40	50
20-24	Men	30	30	30	30	20	10	30	20	20	10
	Women	70	110	90	70	80	110	80	80	100	100
25-29	Men	30	20	20	20	20	10	10	10	10	20
	Women	50	60	70	40	60	40	70	40	50	50
30-34	Men	10	10	20	10	10	10	10	10	10	20
	Women	30	50	30	30	20	30	20	20	40	50
35 and over	Men	10	10	10	10	10	10	10	20	10	20
	Women	30	40	40	30	20	30	30	40	40	30
All	Men	90	80	90	90	70	50	80	70	70	80
	Women	250	330	300	270	270	310	310	270	330	370

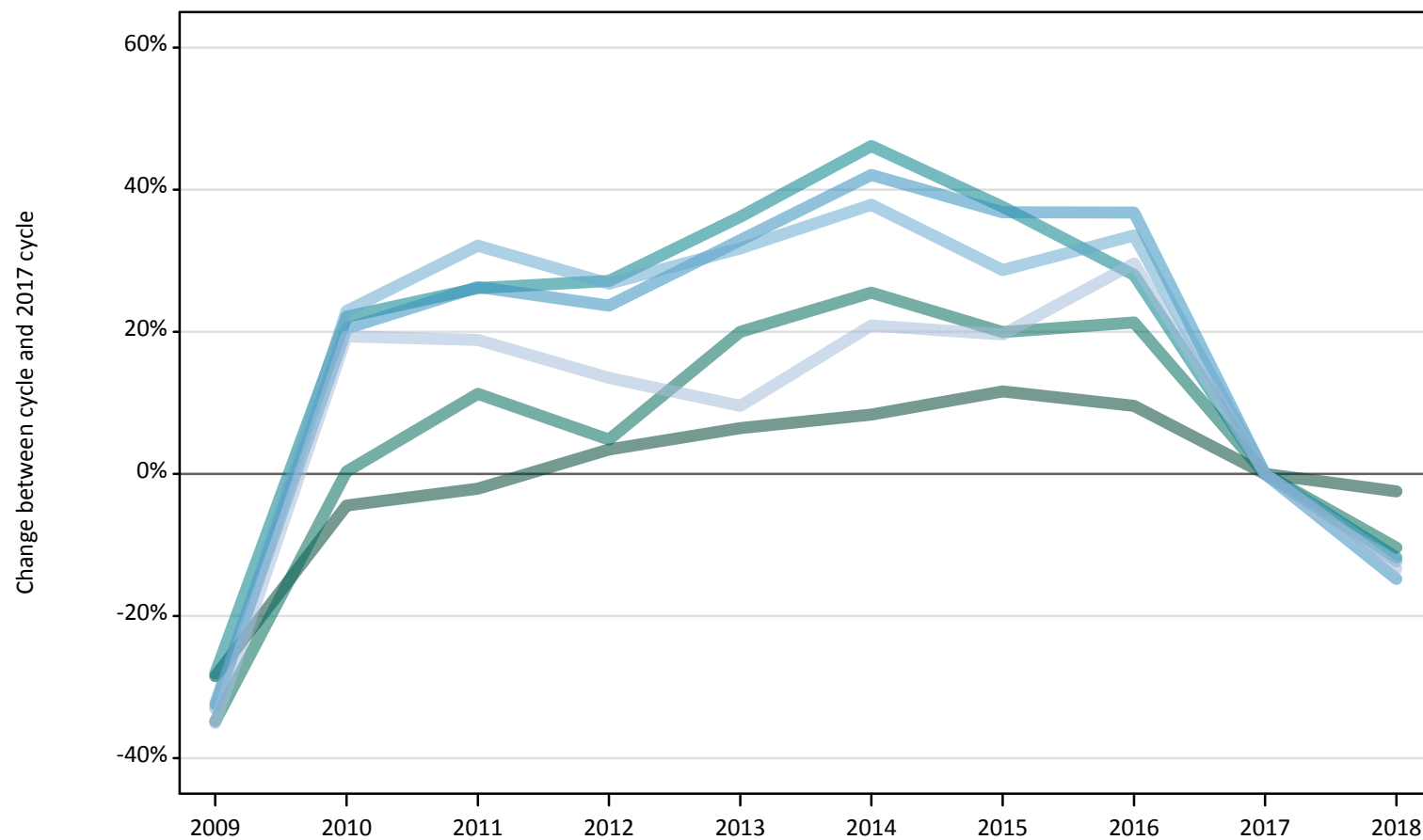
**DB.2.32 Applicants by age and sex: Not EU**  
 Difference between cycle and 2017 cycle

Age group and sex		2009	2010	2011	2012	2013	2014	2015	2016	2017	2018
Under 18	Men										
	Women										
18	Men	-70%	-90%	-70%	-20%	-50%	-40%	0%	-20%	0%	30%
	Women	-54%	-55%	-51%	-4%	-19%	-22%	-3%	-24%	0%	21%
19	Men	-50%	-33%	-17%	17%	-50%	-50%	33%	67%	0%	-17%
	Women	-36%	-14%	-27%	-25%	-25%	-5%	-18%	-34%	0%	20%
20-24	Men	74%	37%	47%	37%	11%	-26%	32%	-21%	0%	-37%
	Women	-25%	17%	-9%	-23%	-18%	14%	-13%	-13%	0%	3%
25-29	Men	145%	118%	100%	64%	109%	0%	0%	-18%	0%	45%
	Women	4%	24%	46%	-13%	20%	-9%	43%	-13%	0%	11%
30-34	Men	17%	8%	83%	8%	-33%	-33%	0%	-33%	0%	42%
	Women	-3%	40%	-11%	-20%	-40%	-29%	-40%	-37%	0%	46%
35 and over	Men	38%	75%	50%	25%	0%	-13%	38%	100%	0%	113%
	Women	-14%	-3%	14%	-22%	-56%	-14%	-11%	0%	0%	-19%
All	Men	34%	21%	35%	25%	0%	-25%	15%	0%	0%	18%
	Women	-26%	-2%	-11%	-18%	-20%	-7%	-6%	-20%	0%	12%



**DB.2.33 Applicants by age: All domiciles**  
Difference between cycle and 2017 cycle

- 18
- 19
- 20-24
- 25-29
- 30-34
- 35 and over



Note: The percentage change is not plotted in the above charts for groups with fewer than 500 applicants in any one cycle.

### DB.2.34 Applicants by age: All domiciles

Domicile and age group		2009	2010	2011	2012	2013	2014	2015	2016	2017	2018
All domiciles	Under 18										
	18	8,150	10,880	11,150	11,780	12,120	12,340	12,710	12,480	11,390	11,110
	19	3,730	5,740	6,370	6,000	6,870	7,180	6,860	6,940	5,720	5,130
	20-24	7,740	13,150	13,580	13,690	14,660	15,730	14,810	13,780	10,770	9,500
	25-29	4,140	7,370	7,730	7,570	8,130	8,690	8,370	8,370	6,120	5,210
	30-34	2,700	4,950	5,320	5,100	5,300	5,550	5,180	5,370	4,020	3,530
	35 and over	4,520	8,300	8,260	7,890	7,620	8,400	8,320	9,010	6,950	6,020
	All	31,100	50,730	52,640	52,160	54,840	58,040	56,380	56,080	45,090	40,600

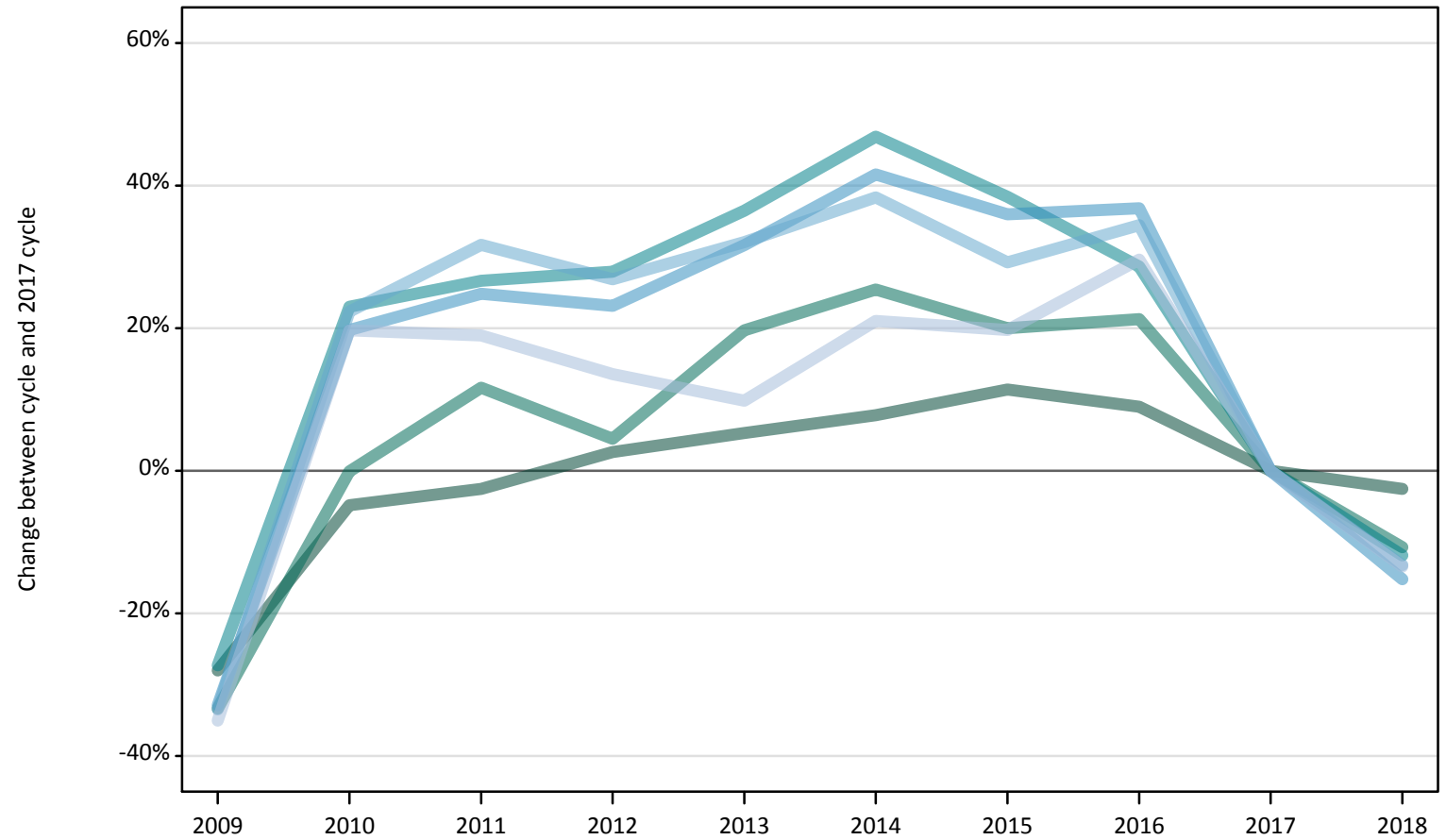
### DB.2.35 Applicants by age: All domiciles

Difference between cycle and 2017 cycle

Domicile and age group		2009	2010	2011	2012	2013	2014	2015	2016	2017	2018
All domiciles	Under 18										
	18	-28%	-4%	-2%	3%	6%	8%	12%	10%	0%	-2%
	19	-35%	0%	11%	5%	20%	25%	20%	21%	0%	-10%
	20-24	-28%	22%	26%	27%	36%	46%	38%	28%	0%	-12%
	25-29	-32%	20%	26%	24%	33%	42%	37%	37%	0%	-15%
	30-34	-33%	23%	32%	27%	32%	38%	29%	34%	0%	-12%
	35 and over	-35%	19%	19%	14%	10%	21%	20%	30%	0%	-13%
	All	-31%	12%	17%	16%	22%	29%	25%	24%	0%	-10%

**DB.2.36 Applicants by age: UK**  
Difference between cycle and 2017 cycle

- 18
- 19
- 20-24
- 25-29
- 30-34
- 35 and over



Note: The percentage change is not plotted in the above charts for groups with fewer than 500 applicants in any one cycle.

### DB.2.37 Applicants by age: UK

Domicile and age group		2009	2010	2011	2012	2013	2014	2015	2016	2017	2018
UK	Under 18										
	18	7,970	10,530	10,780	11,350	11,650	11,920	12,320	12,050	11,060	10,780
	19	3,590	5,380	6,010	5,620	6,440	6,750	6,460	6,520	5,380	4,800
	20-24	7,480	12,660	13,030	13,160	14,040	15,110	14,240	13,240	10,290	9,070
	25-29	4,020	7,170	7,480	7,380	7,890	8,480	8,140	8,200	5,990	5,080
	30-34	2,630	4,830	5,200	5,010	5,220	5,460	5,100	5,310	3,950	3,430
	35 and over	4,460	8,210	8,160	7,790	7,530	8,300	8,210	8,890	6,860	5,940
	All	30,240	49,030	50,800	50,360	52,820	56,090	54,540	54,270	43,590	39,140

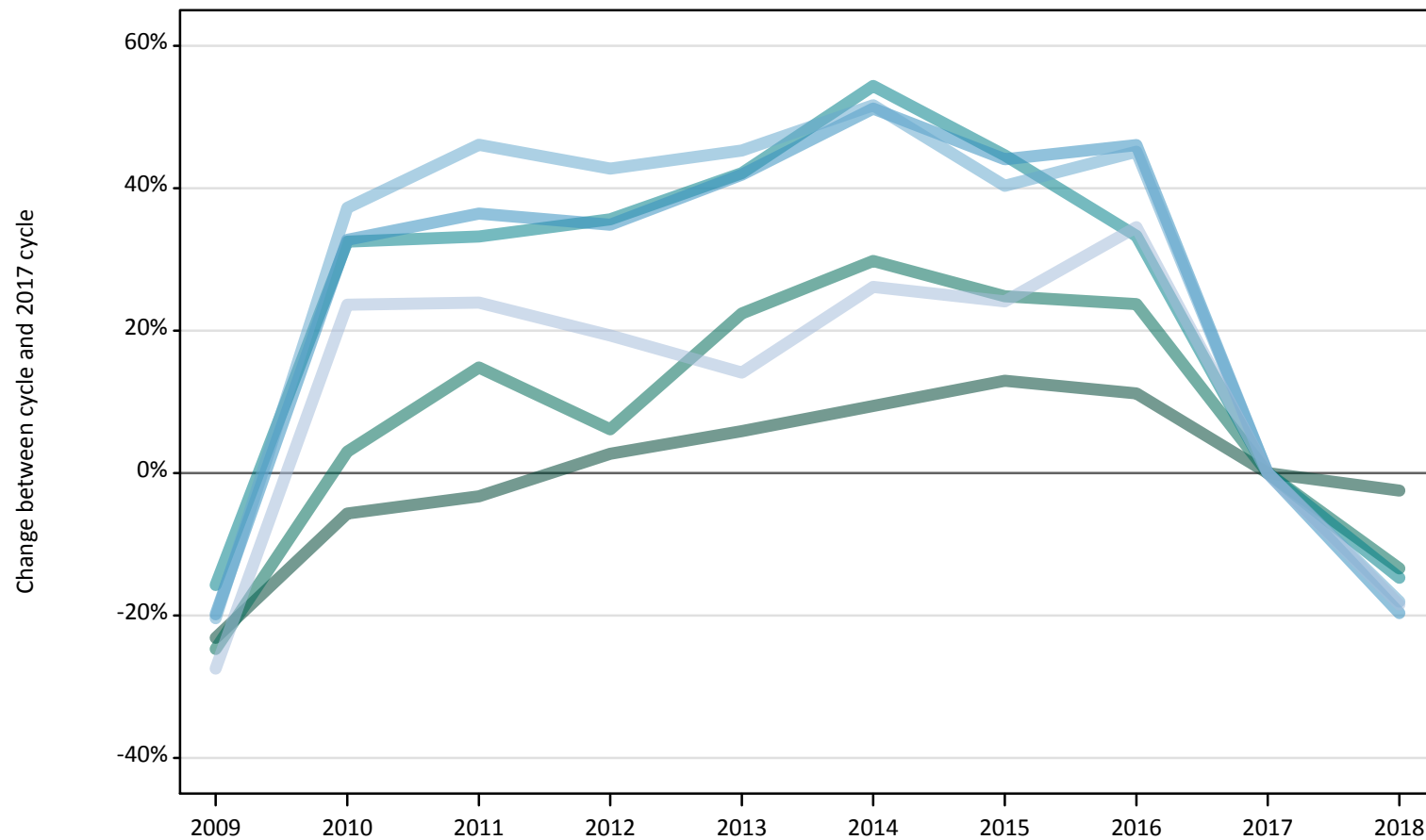
### DB.2.38 Applicants by age: UK

Difference between cycle and 2017 cycle

Domicile and age group		2009	2010	2011	2012	2013	2014	2015	2016	2017	2018
UK	Under 18										
	18	-28%	-5%	-3%	3%	5%	8%	11%	9%	0%	-3%
	19	-33%	-0%	12%	4%	20%	25%	20%	21%	0%	-11%
	20-24	-27%	23%	27%	28%	36%	47%	38%	29%	0%	-12%
	25-29	-33%	20%	25%	23%	32%	42%	36%	37%	0%	-15%
	30-34	-33%	22%	32%	27%	32%	38%	29%	34%	0%	-13%
	35 and over	-35%	20%	19%	14%	10%	21%	20%	30%	0%	-13%
	All	-31%	13%	17%	16%	21%	29%	25%	25%	0%	-10%

**DB.2.39 Applicants by age: England**  
Difference between cycle and 2017 cycle

- 18
- 19
- 20-24
- 25-29
- 30-34
- 35 and over



Note: The percentage change is not plotted in the above charts for groups with fewer than 500 applicants in any one cycle.

### DB.2.40 Applicants by age: England

Domicile and age group		2009	2010	2011	2012	2013	2014	2015	2016	2017	2018
England	Under 18										
	18	6,460	7,920	8,130	8,630	8,890	9,190	9,490	9,340	8,400	8,190
	19	3,190	4,360	4,860	4,500	5,190	5,500	5,290	5,240	4,240	3,670
	20-24	6,690	10,510	10,560	10,760	11,270	12,240	11,470	10,570	7,930	6,770
	25-29	3,620	5,990	6,160	6,090	6,400	6,820	6,500	6,590	4,510	3,630
	30-34	2,390	4,130	4,390	4,290	4,370	4,560	4,220	4,360	3,010	2,460
	35 and over	4,140	7,060	7,070	6,810	6,510	7,200	7,080	7,680	5,710	4,650
	All	26,580	40,150	41,270	41,080	42,650	45,530	44,060	43,800	33,810	29,390

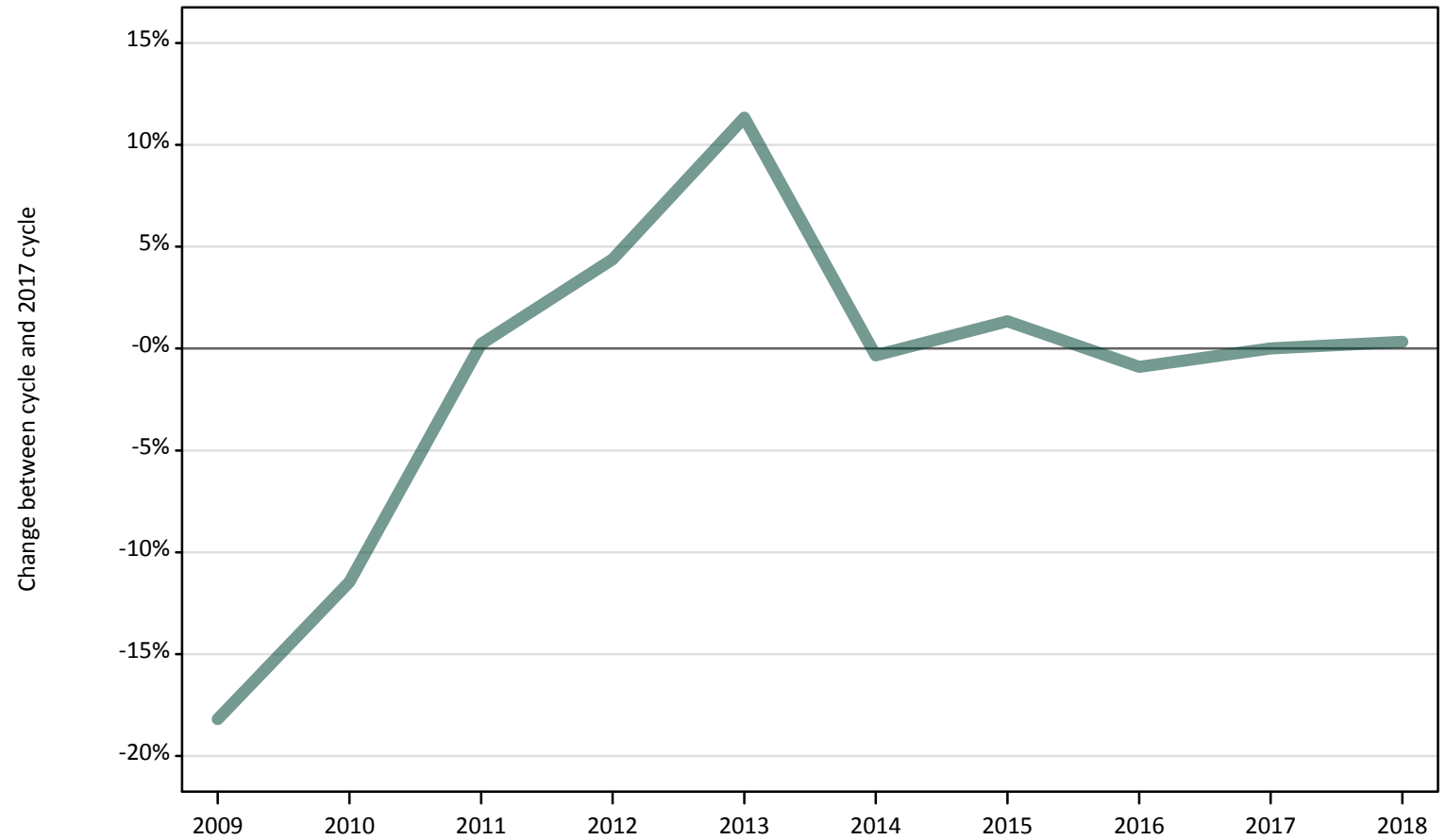
### DB.2.41 Applicants by age: England

Difference between cycle and 2017 cycle

Domicile and age group		2009	2010	2011	2012	2013	2014	2015	2016	2017	2018
England	Under 18										
	18	-23%	-6%	-3%	3%	6%	9%	13%	11%	0%	-2%
	19	-25%	3%	15%	6%	22%	30%	25%	24%	0%	-13%
	20-24	-16%	33%	33%	36%	42%	54%	45%	33%	0%	-15%
	25-29	-20%	33%	36%	35%	42%	51%	44%	46%	0%	-20%
	30-34	-20%	37%	46%	43%	45%	52%	40%	45%	0%	-18%
	35 and over	-27%	24%	24%	19%	14%	26%	24%	35%	0%	-18%
	All	-21%	19%	22%	22%	26%	35%	30%	30%	0%	-13%

**DB.2.42 Applicants by age: Northern Ireland**  
Difference between cycle and 2017 cycle

- 18
- 19
- 20-24
- 25-29
- 30-34
- 35 and over



Note: The percentage change is not plotted in the above charts for groups with fewer than 500 applicants in any one cycle.

### DB.2.43 Applicants by age: Northern Ireland

Domicile and age group		2009	2010	2011	2012	2013	2014	2015	2016	2017	2018
Northern Ireland	Under 18										
	18	730	790	890	930	990	890	900	880	890	890
	19	140	210	270	290	430	400	360	410	390	350
	20-24	200	350	430	430	780	740	710	680	620	550
	25-29	90	140	160	150	330	350	320	340	270	250
	30-34	40	60	70	70	180	180	170	190	170	140
	35 and over	40	90	80	70	180	150	180	190	180	160
	All	1,230	1,630	1,910	1,940	2,890	2,710	2,640	2,700	2,510	2,350

### DB.2.44 Applicants by age: Northern Ireland

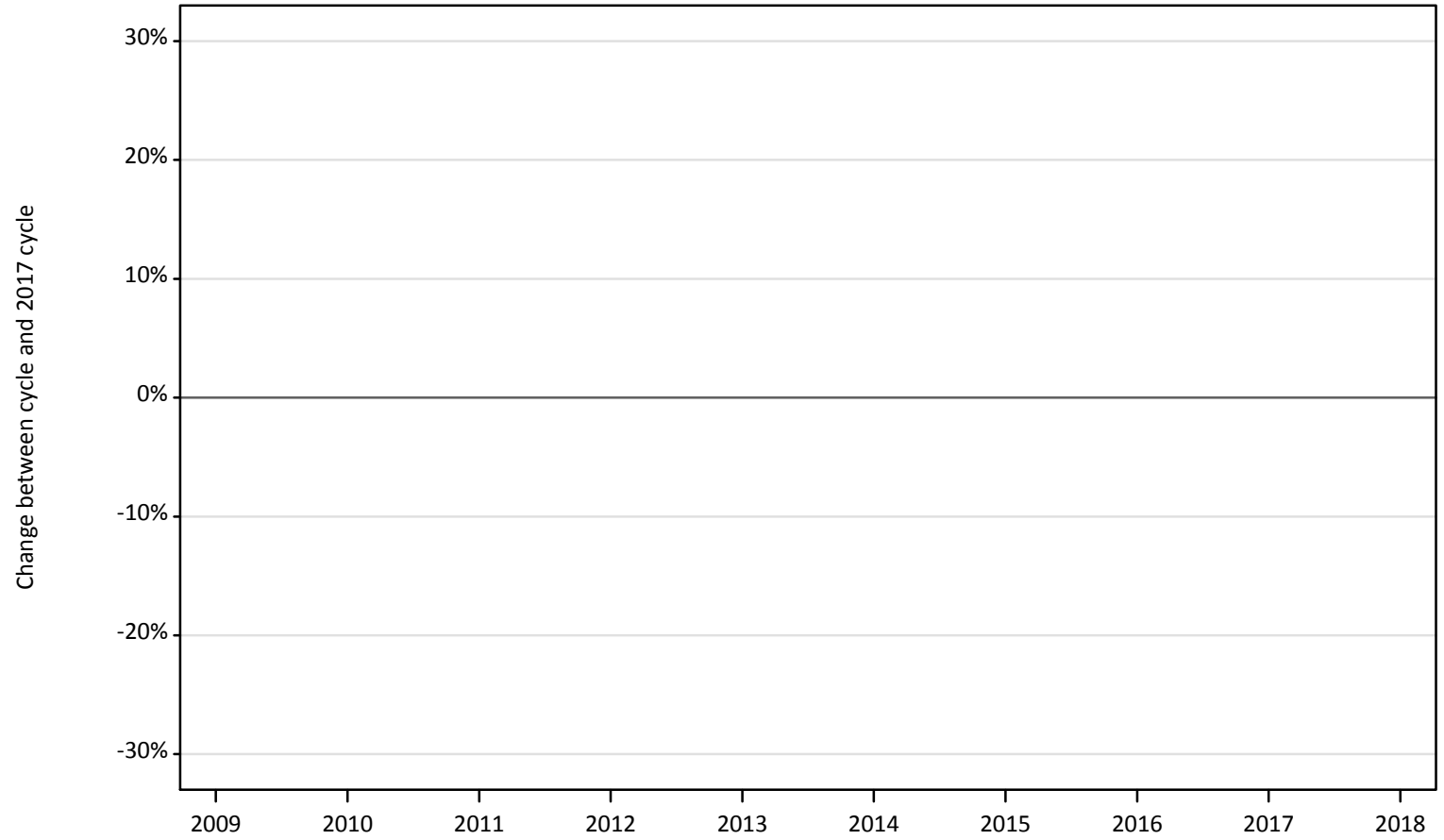
Difference between cycle and 2017 cycle

Domicile and age group		2009	2010	2011	2012	2013	2014	2015	2016	2017	2018
Northern Ireland	Under 18										
	18	-18%	-11%	0%	4%	11%	-0%	1%	-1%	0%	0%
	19	-63%	-47%	-29%	-24%	10%	3%	-7%	7%	0%	-10%
	20-24	-68%	-44%	-31%	-32%	25%	19%	13%	9%	0%	-11%
	25-29	-66%	-47%	-40%	-44%	25%	31%	22%	28%	0%	-6%
	30-34	-78%	-65%	-55%	-58%	9%	8%	3%	13%	0%	-13%
	35 and over	-78%	-52%	-56%	-62%	3%	-14%	1%	10%	0%	-10%
	All	-51%	-35%	-24%	-23%	15%	8%	5%	8%	0%	-6%



**DB.2.45 Applicants by age: Scotland**  
Difference between cycle and 2017 cycle

- 18
- 19
- 20-24
- 25-29
- 30-34
- 35 and over



Note: The percentage change is not plotted in the above charts for groups with fewer than 500 applicants in any one cycle.

### DB.2.46 Applicants by age: Scotland

Domicile and age group		2009	2010	2011	2012	2013	2014	2015	2016	2017	2018
Scotland	Under 18										
	18	300	1,210	1,190	1,200	1,170	1,230	1,260	1,160	1,130	1,100
	19	70	540	530	520	530	550	500	530	450	470
	20-24	130	1,190	1,300	1,160	1,190	1,350	1,280	1,160	1,080	1,120
	25-29	50	670	700	660	660	820	830	780	760	790
	30-34	30	410	480	370	380	460	480	470	510	520
	35 and over	30	750	660	540	520	640	640	670	660	790
	All	610	4,860	4,900	4,490	4,490	5,100	5,020	4,800	4,630	4,820

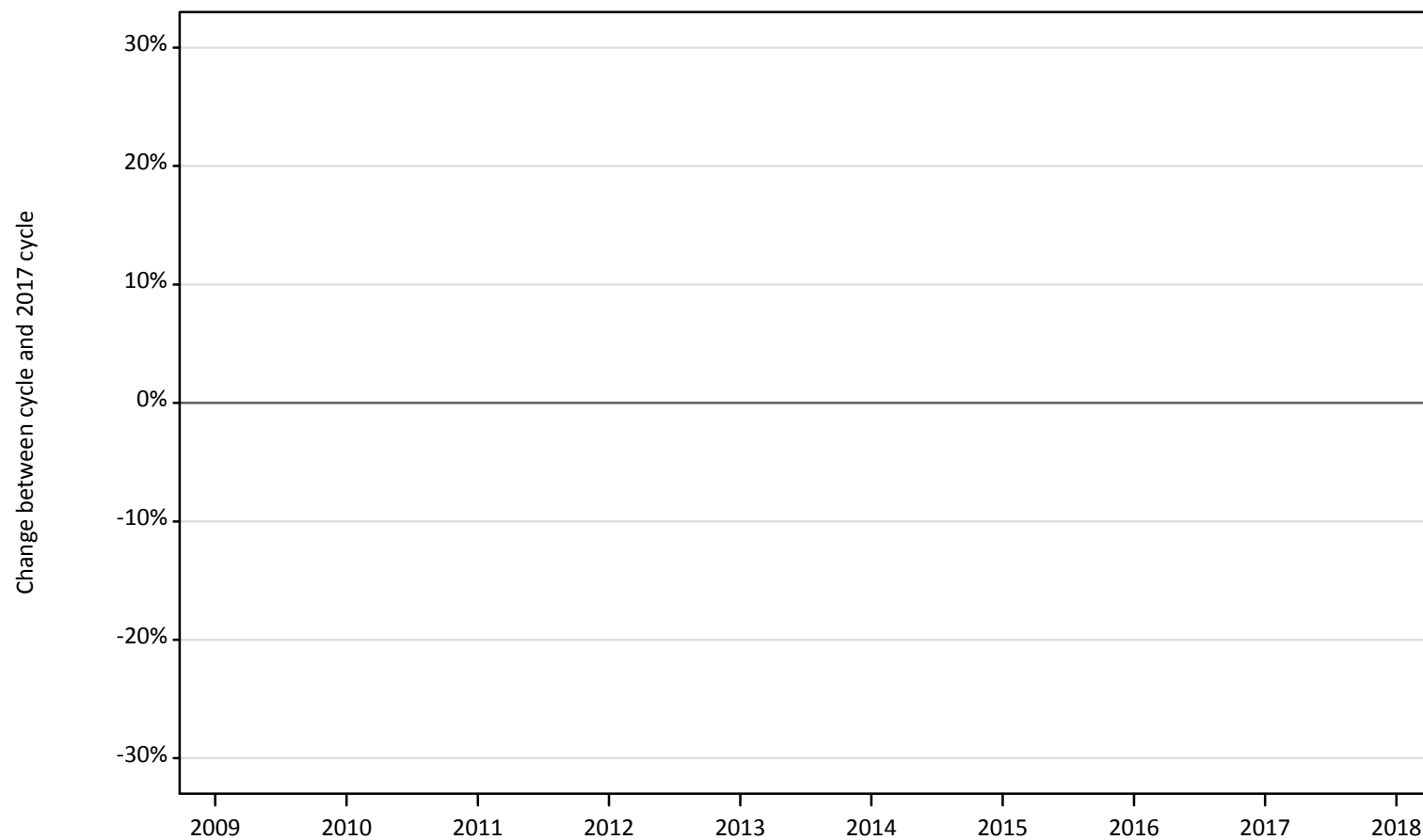
### DB.2.47 Applicants by age: Scotland

Difference between cycle and 2017 cycle

Domicile and age group		2009	2010	2011	2012	2013	2014	2015	2016	2017	2018
Scotland	Under 18										
	18	-73%	6%	5%	6%	3%	9%	11%	2%	0%	-3%
	19	-84%	21%	17%	17%	19%	23%	11%	18%	0%	4%
	20-24	-88%	10%	20%	7%	11%	25%	19%	7%	0%	3%
	25-29	-94%	-12%	-8%	-14%	-13%	7%	8%	3%	0%	4%
	30-34	-95%	-19%	-6%	-28%	-26%	-10%	-6%	-8%	0%	2%
	35 and over	-95%	14%	-1%	-19%	-21%	-3%	-4%	1%	0%	20%
	All	-87%	5%	6%	-3%	-3%	10%	8%	4%	0%	4%

**DB.2.48 Applicants by age: Wales**  
Difference between cycle and 2017 cycle

- 18
- 19
- 20-24
- 25-29
- 30-34
- 35 and over



Note: The percentage change is not plotted in the above charts for groups with fewer than 500 applicants in any one cycle.

### DB.2.49 Applicants by age: Wales

Domicile and age group		2009	2010	2011	2012	2013	2014	2015	2016	2017	2018
Wales	Under 18										
	18	480	610	570	590	600	610	670	680	640	590
	19	180	270	340	310	300	300	320	340	310	320
	20-24	470	610	740	820	800	770	780	820	650	630
	25-29	270	370	460	480	490	500	490	480	450	410
	30-34	170	230	260	280	290	270	240	290	270	300
	35 and over	250	320	350	370	320	310	310	350	310	330
	All	1,820	2,410	2,720	2,850	2,790	2,750	2,810	2,970	2,640	2,590

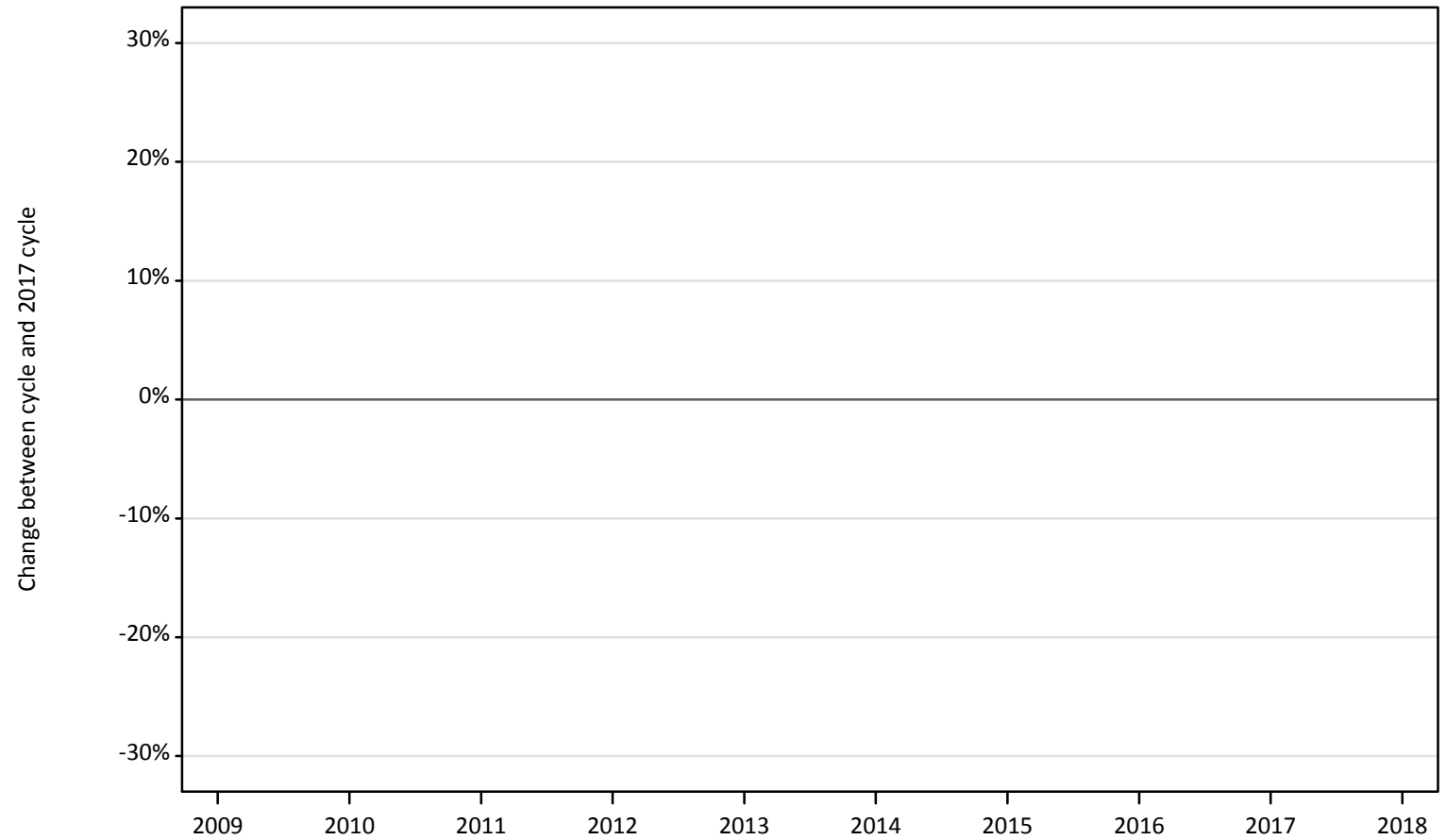
### DB.2.50 Applicants by age: Wales

Difference between cycle and 2017 cycle

Domicile and age group		2009	2010	2011	2012	2013	2014	2015	2016	2017	2018
Wales	Under 18										
	18	-25%	-5%	-11%	-8%	-7%	-4%	5%	6%	0%	-7%
	19	-42%	-14%	10%	-0%	-4%	-3%	1%	10%	0%	3%
	20-24	-28%	-7%	13%	25%	22%	17%	19%	26%	0%	-3%
	25-29	-41%	-18%	2%	7%	8%	10%	10%	7%	0%	-8%
	30-34	-36%	-13%	-4%	4%	8%	0%	-12%	9%	0%	11%
	35 and over	-21%	2%	13%	19%	2%	-2%	1%	12%	0%	7%
	All	-31%	-9%	3%	8%	6%	4%	7%	13%	0%	-2%

**DB.2.51 Applicants by age: EU (excluding UK)**  
Difference between cycle and 2017 cycle

- 18
- 19
- 20-24
- 25-29
- 30-34
- 35 and over



Note: The percentage change is not plotted in the above charts for groups with fewer than 500 applicants in any one cycle.

### DB.2.52 Applicants by age: EU (excluding UK)

Domicile and age group		2009	2010	2011	2012	2013	2014	2015	2016	2017	2018
EU (excluding UK)	Under 18										
	18	150	330	340	360	420	360	320	370	250	240
	19	110	320	320	340	390	390	360	380	290	270
	20-24	160	350	440	430	520	500	460	450	360	320
	25-29	40	120	160	140	170	160	150	120	70	70
	30-34	20	50	60	50	60	50	40	30	30	30
	35 and over	20	40	50	70	60	70	60	70	50	40
	All	520	1,280	1,450	1,440	1,680	1,590	1,460	1,480	1,110	1,010

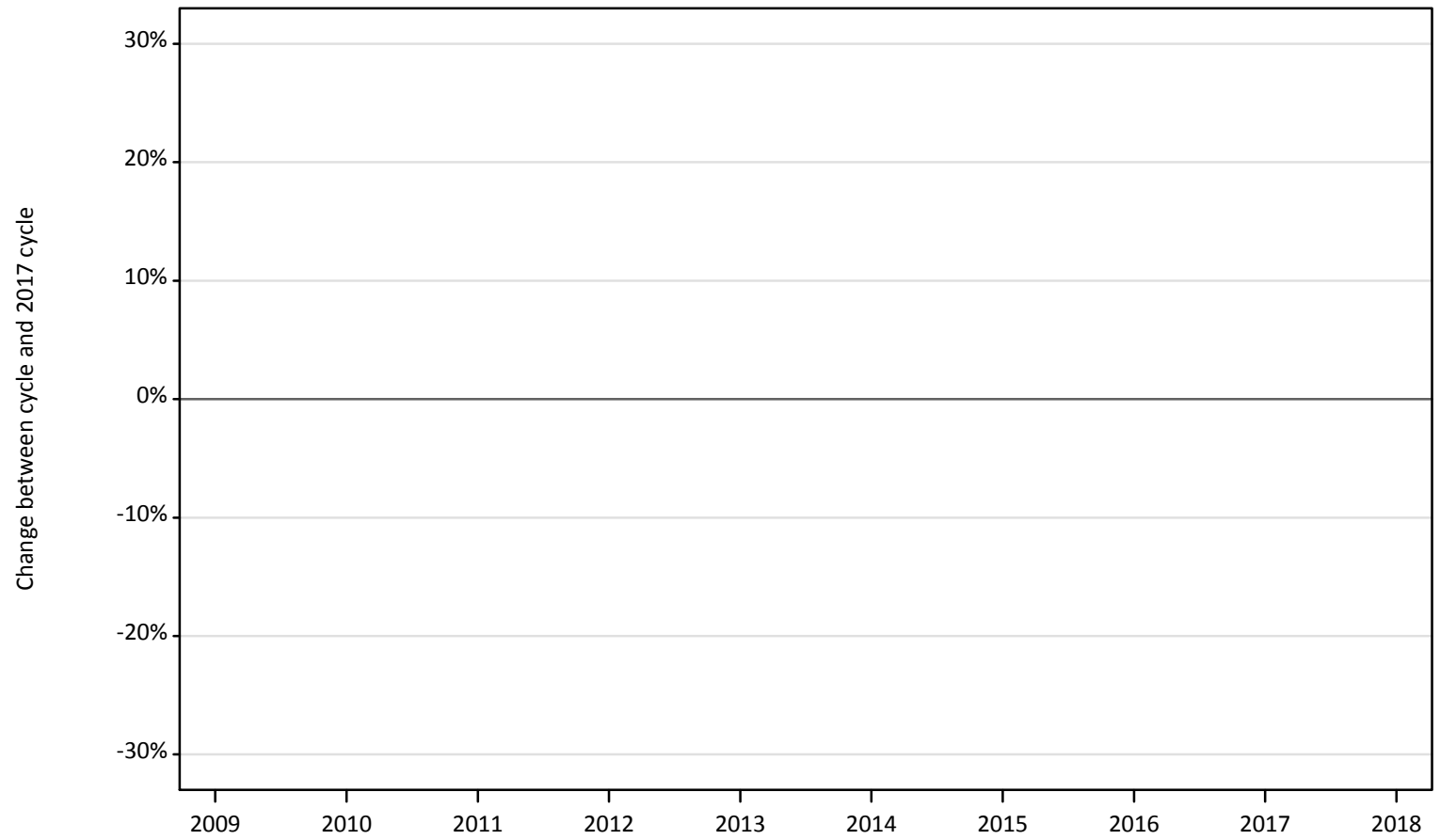
### DB.2.53 Applicants by age: EU (excluding UK)

Difference between cycle and 2017 cycle

Domicile and age group		2009	2010	2011	2012	2013	2014	2015	2016	2017	2018
EU (excluding UK)	Under 18										
	18	-42%	31%	34%	42%	66%	44%	26%	46%	0%	-6%
	19	-62%	11%	11%	15%	34%	33%	24%	30%	0%	-9%
	20-24	-57%	-3%	20%	18%	44%	37%	28%	23%	0%	-12%
	25-29	-41%	62%	130%	90%	132%	123%	110%	75%	0%	-6%
	30-34	-26%	96%	126%	85%	104%	85%	48%	26%	0%	15%
	35 and over	-66%	-24%	0%	32%	24%	30%	24%	40%	0%	-22%
	All	-53%	16%	31%	30%	52%	44%	32%	34%	0%	-9%

**DB.2.54 Applicants by age: Not EU**  
Difference between cycle and 2017 cycle

- 18
- 19
- 20-24
- 25-29
- 30-34
- 35 and over



Note: The percentage change is not plotted in the above charts for groups with fewer than 500 applicants in any one cycle.

### DB.2.55 Applicants by age: Not EU

Domicile and age group		2009	2010	2011	2012	2013	2014	2015	2016	2017	2018
Not EU	Under 18										
	18	30	30	40	70	60	60	80	60	80	90
	19	30	40	40	40	40	50	40	40	50	60
	20-24	110	140	120	100	100	120	110	100	120	110
	25-29	80	80	90	60	80	50	80	50	60	70
	30-34	50	60	50	40	30	30	30	30	50	70
	35 and over	40	50	50	40	20	40	40	50	40	50
	All	340	410	390	360	330	360	390	340	400	450

### DB.2.56 Applicants by age: Not EU

Difference between cycle and 2017 cycle

Domicile and age group		2009	2010	2011	2012	2013	2014	2015	2016	2017	2018
Not EU	Under 18										
	18	-56%	-60%	-53%	-6%	-23%	-25%	-3%	-23%	0%	22%
	19	-38%	-16%	-26%	-20%	-28%	-10%	-12%	-22%	0%	16%
	20-24	-9%	20%	0%	-13%	-13%	7%	-5%	-14%	0%	-3%
	25-29	32%	42%	56%	2%	37%	-7%	35%	-14%	0%	18%
	30-34	2%	32%	13%	-13%	-38%	-30%	-30%	-36%	0%	45%
	35 and over	-5%	11%	20%	-14%	-45%	-14%	-2%	18%	0%	5%
	All	-16%	2%	-3%	-10%	-17%	-10%	-3%	-16%	0%	13%



## DB.2.57 Technical notes and definitions

Applicants have been able to submit applications for all 2018 courses since early September.

Applicants who submit their applications to UCAS by the January deadline are considered as 'on time' applicants for the large majority of courses offered through UCAS.

This statistical release covers all Main Scheme applicants who submit their applications to UCAS by the January deadline, including those who have applied for courses with a 15 October deadline. Counts of RPAs (records of prior acceptance) are not included.

Subject group 'B7' covers courses related to nursing. These additional tables include applicants who made at least one choice to a 'B7' course by the January deadline. The primary deadline applicant statistics, which include applicants to all courses, are available on the UCAS website.

Counts of the number of applicants reported have been rounded to the nearest 10 applicants, this may result in instances where totals do not equal the sum of the components. Proportional changes have been rounded to the nearest whole percentage point.

Applicants under the age of 18 are not shown, to avoid revealing data for any individual.

In 2009, the Canary Islands classification changed from Not EU to EU (excluding UK). In order to present an accurate time series, the Canary Islands have been consistently classified as EU (excluding UK). This will result in differences with data published prior to 2010.

### Age

This statistical release uses country-specific age definitions which align with the cut off points for school/college cohorts within the different administrations of the UK. For England and Wales ages are defined on the 31 August, for Northern Ireland on the 1 July and for Scotland on the 28 February the following year. Defining ages in this way matches the assignment of children to school cohorts. For applicants outside of the UK the cohort cut off for England and Wales has been used.

### Applicant

A person who has made an application in the UCAS system during the cycle reported (including applications for deferred entry). Records of prior acceptance (RPAs) are excluded.

### Application

An application to a course at a provider made by an applicant in the UCAS main scheme. Applicants may make up to five main scheme applications.

### Country of provider

An applicant may be counted once for each provider country they have applied to in the main scheme. If an applicant has applied to providers in multiple countries then the applicant is counted once within each country of provider applied to.

### Domicile

Declared area of permanent residence. The Channel Islands and the Isle of Man have been assigned as 'Not EU'.

### Ethnic group

High level grouping of ethnic origin as declared by the applicant: 'Asian', 'Black', 'Mixed', 'White', 'Other', 'Unknown'.

### First time applicant

An applicant that did not apply to the UCAS scheme in the previous cycle.

### Main scheme

The main UCAS application scheme through which up to five providers/courses can be applied to. This opens in September and closes to new applications on 30 June the following year.

### Reapplicant

An applicant that applied to the UCAS scheme in the previous cycle.

### Sex

As declared by the applicant.

### SIMD 2016

Scottish Index of Multiple Deprivation identifies small area concentrations of multiple deprivation across all of Scotland, providing a relative measure of deprivation among small areas (data zones). In this report, the SIMD 2016 has been used to group areas in each year in the times series.

### POLAR3

Developed by HEFCE and classifies small areas across the UK into five groups, according to their level of young participation in HE. Each of these groups represents around 20 per cent of young people, and is ranked from quintile 1 (areas with the lowest young participation rates, considered as the most disadvantaged) to quintile 5 (highest young participation rates, considered most advantaged).

### POLAR4

Developed by HEFCE and classifies small areas across the UK into five groups, according to their level of young participation in HE. Each of these groups represents around 20 per cent of young people, and is ranked from quintile 1 (areas with the lowest young participation rates, considered as the most disadvantaged) to quintile 5 (highest young participation rates, considered most advantaged). POLAR4 is the most recent version of the POLAR classification, and is available for the first time in UCAS' reporting since its launch in 2017.

### Tariff Group of provider

Providers are grouped as higher, medium or lower tariff based on their average levels of attainment of their accepted applicants (summarised through UCAS Tariff points) in recent cycles. Each group of providers accounted for around a third of all UK 18 year old acceptances in recent cycles.

### Subject group

The JACS3 classification used to classify courses into subject groups.