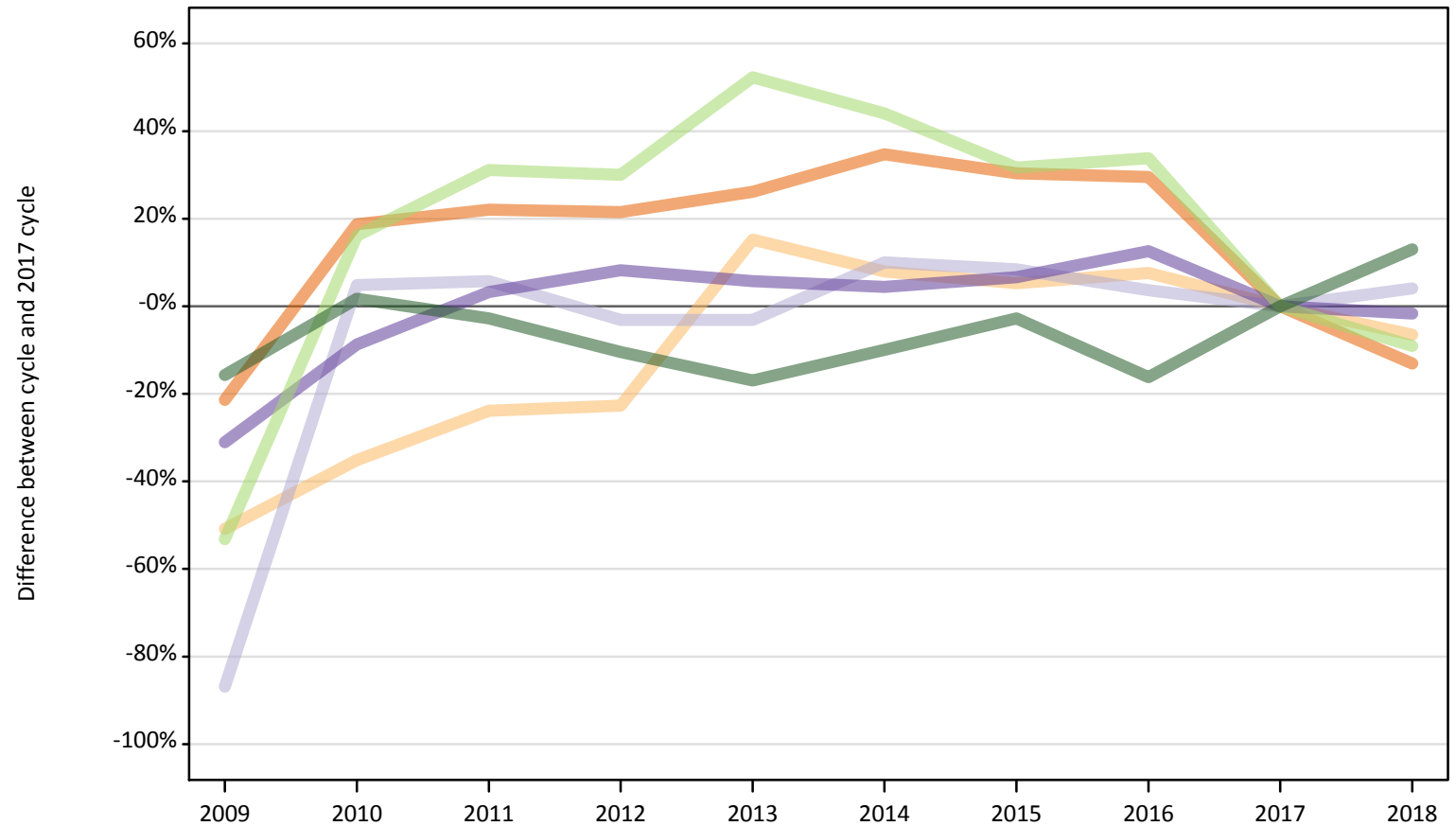


Deadline Applicant Statistics: January

Nursing applicants at the 15 January deadline (2018 cycle)

DB.1 Nursing applicants for all courses by domicile group
Difference between cycle and 2017 cycle

- England
- Northern Ireland
- Scotland
- Wales
- EU (excluding UK)
- Not EU



DB.2 Nursing applicants for all courses by domicile group

Domicile of applicant	2009	2010	2011	2012	2013	2014	2015	2016	2017	2018
England	26,580	40,150	41,270	41,080	42,650	45,530	44,060	43,800	33,810	29,390
Northern Ireland	1,230	1,630	1,910	1,940	2,890	2,710	2,640	2,700	2,510	2,350
Scotland	610	4,860	4,900	4,490	4,490	5,100	5,020	4,800	4,630	4,820
Wales	1,820	2,410	2,720	2,850	2,790	2,750	2,810	2,970	2,640	2,590
--UK	30,240	49,030	50,800	50,360	52,820	56,090	54,540	54,270	43,590	39,140
EU (excluding UK)	520	1,280	1,450	1,440	1,680	1,590	1,460	1,480	1,110	1,010
Not EU	340	410	390	360	330	360	390	340	400	450
--All	31,100	50,730	52,640	52,160	54,840	58,040	56,380	56,080	45,090	40,600

DB.3 Nursing applicants for all courses by domicile group

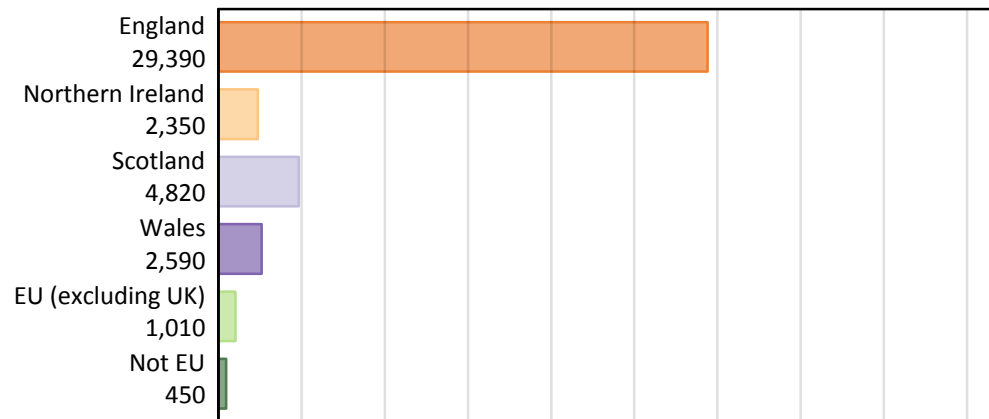
Difference between cycle and 2017 cycle

Domicile of applicant	2009	2010	2011	2012	2013	2014	2015	2016	2017	2018
England	-21%	19%	22%	22%	26%	35%	30%	30%	0%	-13%
Northern Ireland	-51%	-35%	-24%	-23%	15%	8%	5%	8%	0%	-6%
Scotland	-87%	5%	6%	-3%	-3%	10%	8%	4%	0%	4%
Wales	-31%	-9%	3%	8%	6%	4%	7%	13%	0%	-2%
--UK	-31%	13%	17%	16%	21%	29%	25%	25%	0%	-10%
EU (excluding UK)	-53%	16%	31%	30%	52%	44%	32%	34%	0%	-9%
Not EU	-16%	2%	-3%	-10%	-17%	-10%	-3%	-16%	0%	13%
--All	-31%	12%	17%	16%	22%	29%	25%	24%	0%	-10%

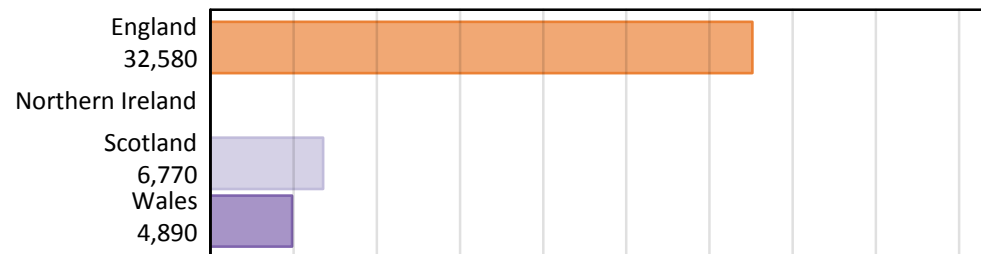
DB.4 Nursing applicants for all courses by country of domicile and provider, 2018 cycle

Domicile of applicant	Country of provider				
	England	Northern Ireland	Scotland	Wales	UK
England	29,280		670	2,200	29,390
Northern Ireland	890		600	60	2,350
Scotland	100		4,800	10	4,820
Wales	1,280		20	2,490	2,590
--UK	31,550		6,080	4,750	39,140
EU (excluding UK)	630		600	100	1,010
Not EU	410		90	40	450
--All	32,580		6,770	4,890	40,600

DB.5 Nursing applicants for all courses by domicile group



DB.6 Nursing applicants for all courses by country of provider



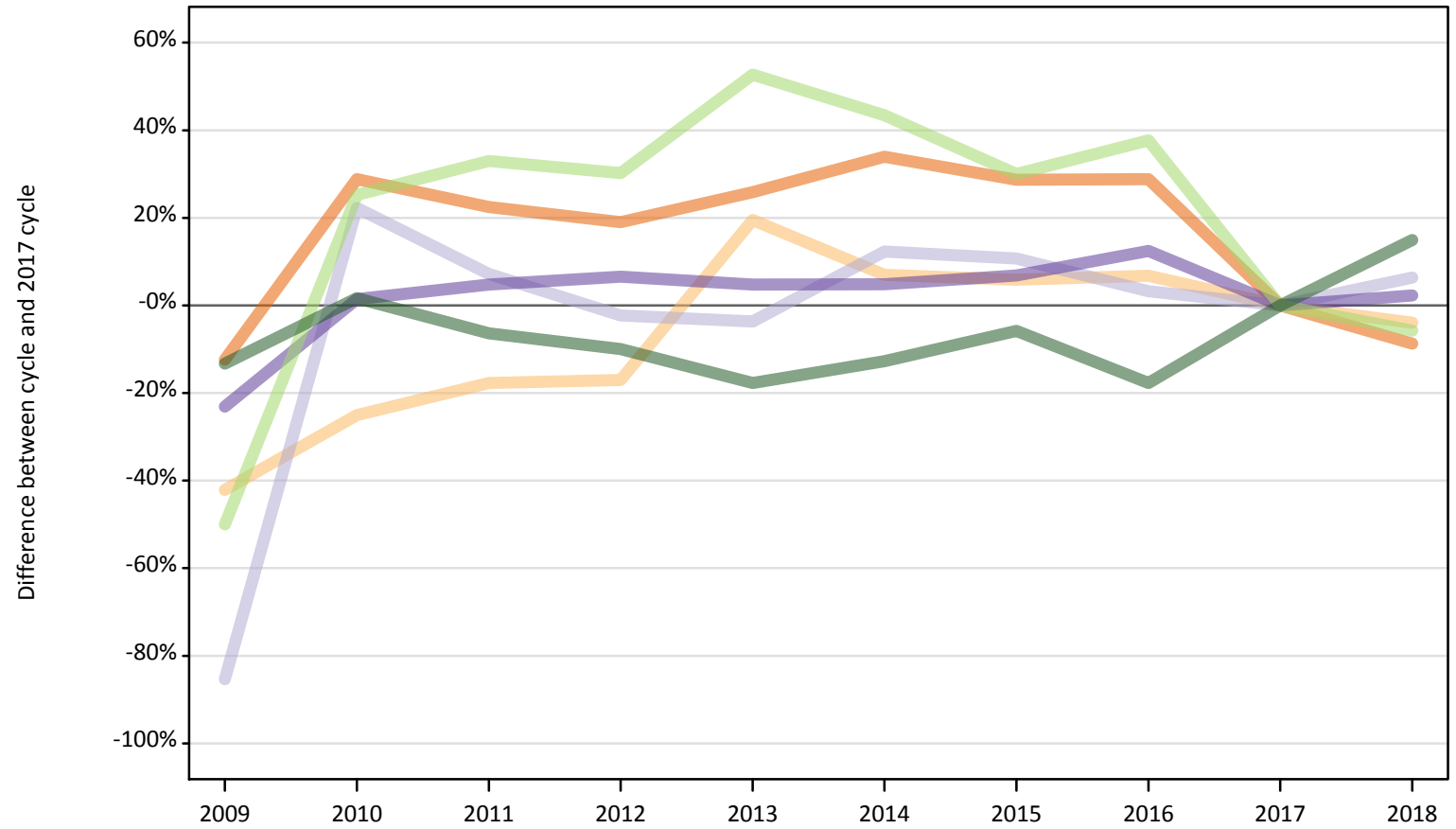
DB.7 Nursing applicants for all courses by country of domicile and provider

Domicile of applicant	Country of provider	2009	2010	2011	2012	2013	2014	2015	2016	2017	2018
England	England	26,480	40,010	41,160	40,970	42,540	45,410	43,970	43,720	33,700	29,280
	Northern Ireland										
	Scotland	240	630	660	750	880	950	930	880	740	670
	Wales	1,370	1,900	2,410	2,480	2,650	2,720	2,710	2,620	2,390	2,200
	UK	26,580	40,150	41,270	41,080	42,650	45,530	44,060	43,800	33,810	29,390
Northern Ireland	England	580	690	930	1,050	1,030	1,050	1,020	1,120	960	890
	Northern Ireland										
	Scotland	230	410	580	670	740	740	710	750	740	600
	Wales	50	80	90	110	70	70	70	100	100	60
	UK	1,230	1,630	1,910	1,940	2,890	2,710	2,640	2,700	2,510	2,350
Scotland	England	70	170	190	210	210	200	180	210	130	100
	Northern Ireland										
	Scotland	570	4,820	4,860	4,440	4,450	5,050	4,990	4,760	4,610	4,800
	Wales	10	10	10	10	10	20	20	10	10	10
	UK	610	4,860	4,900	4,490	4,490	5,100	5,020	4,800	4,630	4,820
Wales	England	670	950	1,160	1,450	1,520	1,670	1,710	1,650	1,430	1,280
	Northern Ireland										
	Scotland	10	20	30	20	20	40	20	20	30	20
	Wales	1,700	2,200	2,560	2,670	2,620	2,540	2,600	2,750	2,480	2,490
	UK	1,820	2,410	2,720	2,850	2,790	2,750	2,810	2,970	2,640	2,590

Domicile of applicant	Country of provider	2009	2010	2011	2012	2013	2014	2015	2016	2017	2018
--UK	England	27,800	41,810	43,440	43,680	45,300	48,340	46,890	46,700	36,220	31,550
	Northern Ireland										
	Scotland	1,040	5,890	6,130	5,880	6,090	6,780	6,650	6,410	6,110	6,080
	Wales	3,120	4,180	5,070	5,270	5,350	5,340	5,400	5,490	4,980	4,750
	UK	30,240	49,030	50,800	50,360	52,820	56,090	54,540	54,270	43,590	39,140
EU (excluding UK)	England	410	1,010	1,170	1,140	1,310	1,250	1,190	1,250	800	630
	Northern Ireland										
	Scotland	150	590	680	670	730	710	580	600	610	600
	Wales	120	220	290	160	260	180	190	180	130	100
	UK	520	1,280	1,450	1,440	1,680	1,590	1,460	1,480	1,110	1,010
Not EU	England	320	360	350	320	300	320	330	290	360	410
	Northern Ireland										
	Scotland	10	70	70	60	70	80	120	90	80	90
	Wales	30	30	50	40	30	50	60	30	60	40
	UK	340	410	390	360	330	360	390	340	400	450
--All	England	28,530	43,180	44,960	45,140	46,900	49,910	48,410	48,230	37,380	32,580
	Northern Ireland										
	Scotland	1,200	6,550	6,880	6,610	6,900	7,560	7,340	7,090	6,800	6,770
	Wales	3,270	4,430	5,410	5,470	5,650	5,570	5,640	5,700	5,170	4,890
	UK	31,100	50,730	52,640	52,160	54,840	58,040	56,380	56,080	45,090	40,600

DB.8 Nursing first-time applicants for all courses by domicile group
Difference between cycle and 2017 cycle

- England
- Northern Ireland
- Scotland
- Wales
- EU (excluding UK)
- Not EU



DB.9 Nursing first-time applicants for all courses by domicile group

Domicile of applicant	2009	2010	2011	2012	2013	2014	2015	2016	2017	2018
England	24,040	35,350	33,610	32,660	34,540	36,750	35,320	35,360	27,440	25,060
Northern Ireland	1,150	1,490	1,640	1,650	2,370	2,130	2,100	2,120	1,990	1,910
Scotland	560	4,630	4,060	3,700	3,650	4,260	4,200	3,910	3,790	4,030
Wales	1,670	2,200	2,280	2,320	2,280	2,280	2,320	2,440	2,170	2,220
--UK	27,420	43,680	41,580	40,330	42,840	45,410	43,940	43,840	35,390	33,220
EU (excluding UK)	480	1,200	1,270	1,250	1,460	1,370	1,240	1,320	960	900
Not EU	310	370	340	330	300	320	340	300	360	420
--All	28,210	45,240	43,190	41,900	44,600	47,100	45,530	45,450	36,710	34,540

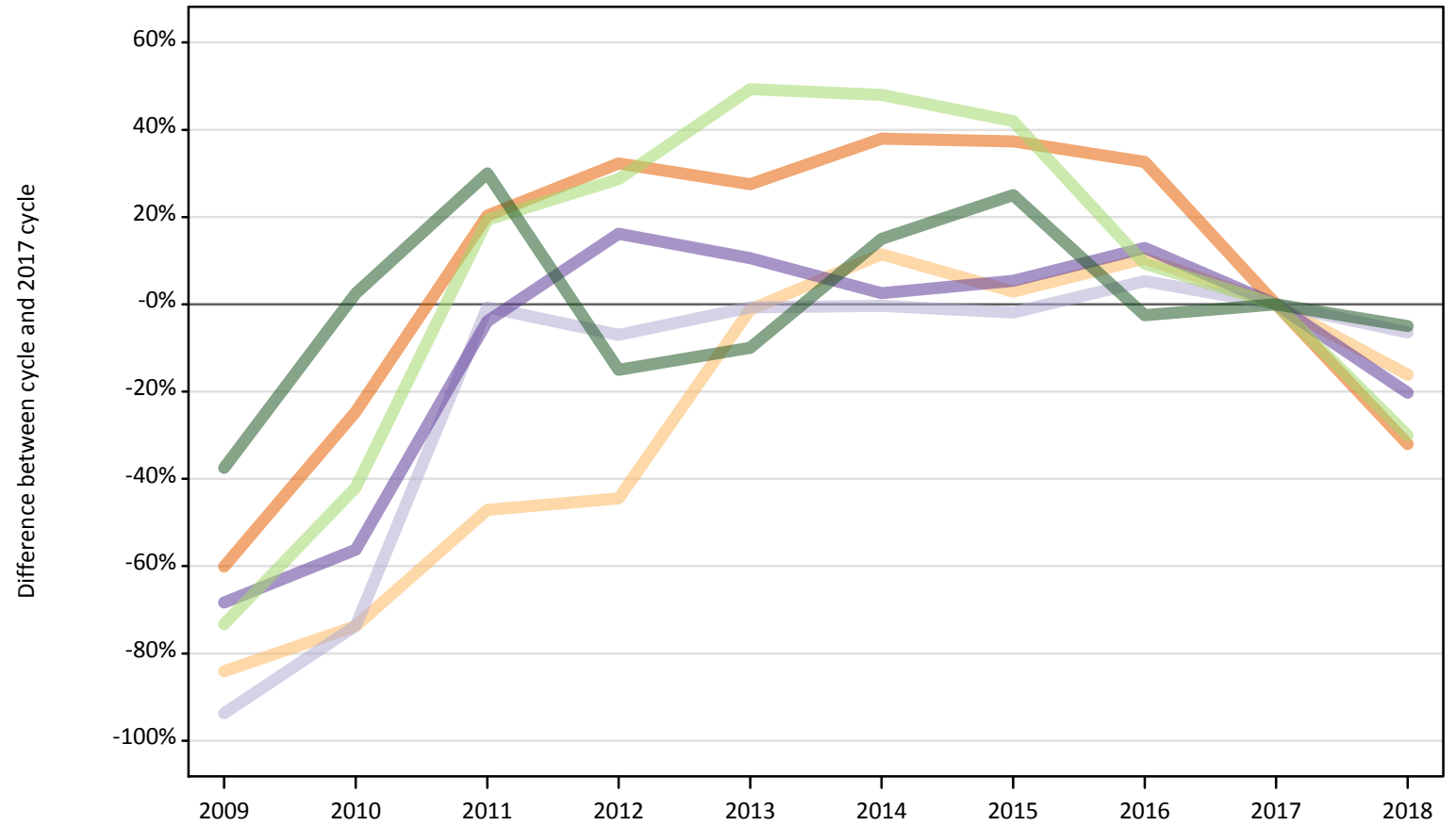
DB.10 Nursing first-time applicants for all courses by domicile group

Difference between cycle and 2017 cycle

Domicile of applicant	2009	2010	2011	2012	2013	2014	2015	2016	2017	2018
England	-12%	29%	22%	19%	26%	34%	29%	29%	0%	-9%
Northern Ireland	-42%	-25%	-18%	-17%	19%	7%	6%	7%	0%	-4%
Scotland	-85%	22%	7%	-2%	-4%	12%	11%	3%	0%	6%
Wales	-23%	1%	5%	7%	5%	5%	7%	12%	0%	2%
--UK	-23%	23%	17%	14%	21%	28%	24%	24%	0%	-6%
EU (excluding UK)	-50%	25%	33%	30%	53%	43%	30%	38%	0%	-6%
Not EU	-13%	2%	-6%	-10%	-18%	-13%	-6%	-18%	0%	15%
--All	-23%	23%	18%	14%	21%	28%	24%	24%	0%	-6%

DB.11 Nursing reapppliers for all courses by domicile group
Difference between cycle and 2017 cycle

- England
- Northern Ireland
- Scotland
- Wales
- EU (excluding UK)
- Not EU



DB.12 Nursing reapplicants for all courses by domicile group

Domicile of applicant	2009	2010	2011	2012	2013	2014	2015	2016	2017	2018
England	2,540	4,800	7,660	8,420	8,120	8,780	8,740	8,440	6,360	4,330
Northern Ireland	80	140	280	290	520	580	540	580	520	440
Scotland	50	220	840	780	840	840	830	890	840	790
Wales	150	200	450	540	510	480	490	520	460	370
--UK	2,820	5,360	9,220	10,030	9,980	10,680	10,590	10,430	8,190	5,920
EU (excluding UK)	40	90	180	190	220	220	210	160	150	110
Not EU	30	40	50	30	40	50	50	40	40	40
--All	2,890	5,490	9,450	10,260	10,240	10,940	10,860	10,630	8,380	6,070

DB.13 Nursing reapplicants for all courses by domicile group

Difference between cycle and 2017 cycle

Domicile of applicant	2009	2010	2011	2012	2013	2014	2015	2016	2017	2018
England	-60%	-25%	20%	32%	28%	38%	37%	33%	0%	-32%
Northern Ireland	-84%	-74%	-47%	-44%	-1%	11%	3%	11%	0%	-16%
Scotland	-94%	-74%	-1%	-7%	-1%	0%	-2%	5%	0%	-6%
Wales	-68%	-56%	-4%	16%	11%	3%	5%	13%	0%	-20%
--UK	-66%	-35%	12%	22%	22%	30%	29%	27%	0%	-28%
EU (excluding UK)	-73%	-42%	19%	29%	49%	48%	42%	9%	0%	-30%
Not EU	-38%	3%	30%	-15%	-10%	15%	25%	-3%	0%	-5%
--All	-66%	-35%	13%	22%	22%	31%	30%	27%	0%	-28%

DB.14 Nursing applicants for all courses by country of domicile and age group

Selected age groups split by first-time applicants and reapplicants

Domicile of applicant	Age group	2009	2010	2011	2012	2013	2014	2015	2016	2017	2018
England	18	6,460	7,920	8,130	8,630	8,890	9,190	9,490	9,340	8,400	8,190
	19	3,190	4,360	4,860	4,500	5,190	5,500	5,290	5,240	4,240	3,670
	19 First-time applicant	2,570	3,300	3,200	2,920	3,410	3,710	3,580	3,500	3,010	2,630
	19 Reapplicant	620	1,060	1,670	1,570	1,770	1,790	1,710	1,740	1,220	1,040
Northern Ireland	18	730	790	890	930	990	890	900	880	890	890
	19	140	210	270	290	430	400	360	410	390	350
	19 First-time applicant	100	140	130	140	170	190	160	170	150	160
	19 Reapplicant	40	70	140	160	260	210	200	240	230	190
Scotland	18	300	1,210	1,190	1,200	1,170	1,230	1,260	1,160	1,130	1,100
	19	70	540	530	520	530	550	500	530	450	470
	19 First-time applicant	50	430	270	270	270	280	240	250	210	230
	19 Reapplicant	30	110	260	250	260	270	260	280	240	240
Wales	18	480	610	570	590	600	610	670	680	640	590
	19	180	270	340	310	300	300	320	340	310	320
	19 First-time applicant	150	210	220	180	180	190	190	200	180	230
	19 Reapplicant	40	60	130	130	120	110	130	140	130	100

DB.15 Nursing applicants for all courses by country of domicile and age group

Difference between cycle and 2017 cycle for selected age groups split by first-time applicants and reapplicants

Domicile of applicant	Age group	2009	2010	2011	2012	2013	2014	2015	2016	2017	2018
England	18	-23%	-6%	-3%	3%	6%	9%	13%	11%	0%	-2%
	19	-25%	3%	15%	6%	22%	30%	25%	24%	0%	-13%
	19 First-time applicant	-15%	10%	6%	-3%	13%	23%	19%	16%	0%	-13%
	19 Reapplicant	-49%	-13%	36%	29%	45%	46%	40%	42%	0%	-15%
Northern Ireland	18	-18%	-11%	0%	4%	11%	0%	1%	-1%	0%	0%
	19	-63%	-47%	-29%	-24%	10%	3%	-7%	7%	0%	-10%
	19 First-time applicant	-36%	-12%	-15%	-12%	7%	23%	3%	10%	0%	1%
	19 Reapplicant	-81%	-70%	-39%	-32%	13%	-10%	-14%	5%	0%	-18%
Scotland	18	-73%	6%	5%	6%	3%	9%	11%	2%	0%	-3%
	19	-84%	21%	17%	17%	19%	23%	11%	18%	0%	4%
	19 First-time applicant	-77%	103%	27%	30%	28%	35%	16%	20%	0%	10%
	19 Reapplicant	-89%	-53%	9%	5%	11%	12%	8%	16%	0%	-1%
Wales	18	-25%	-5%	-11%	-8%	-7%	-4%	5%	6%	0%	-7%
	19	-42%	-14%	10%	0%	-4%	-3%	1%	10%	0%	3%
	19 First-time applicant	-19%	16%	22%	2%	2%	7%	4%	12%	0%	26%
	19 Reapplicant	-72%	-55%	-5%	-4%	-14%	-17%	-4%	7%	0%	-29%

DB.16 Technical notes and definitions

Applicants have been able to submit applications for all 2018 courses since early September.

Applicants who submit their applications to UCAS by the January deadline are considered as 'on time' applicants for the large majority of courses offered through UCAS.

This statistical release covers all Main Scheme applicants who submit their applications to UCAS by the January deadline, including those who have applied for courses with a 15 October deadline. Counts of RPAs (records of prior acceptance) are not included.

Subject group 'B7' covers courses related to nursing. These additional tables include applicants who made at least one choice to a 'B7' course by the January deadline. The primary deadline applicant statistics, which include applicants to all courses, are available on the UCAS website.

Applicants to courses in Northern Ireland are not shown to avoid revealing outcomes for individual providers.

Counts of the number of applicants reported have been rounded to the nearest 10 applicants, this may result in instances where totals do not equal the sum of the components. Proportional changes have been rounded to the nearest whole percentage point.

In 2009, the Canary Islands classification changed from Not EU to EU (excluding UK). In order to present an accurate time series, the Canary Islands have been consistently classified as EU (excluding UK). This will result in differences with data published prior to 2010.

Age

This statistical release uses country-specific age definitions which align with the cut off points for school/college cohorts within the different administrations of the UK. For England and Wales ages are defined on the 31 August, for Northern Ireland on the 1 July and for Scotland on the 28 February the following year. Defining ages in this way matches the assignment of children to school cohorts. For applicants outside of the UK the cohort cut off for England and Wales has been used.

Applicant

A person who has made an application in the UCAS system during the cycle reported (including applications for deferred entry). Records of prior acceptance (RPAs) are excluded.

Application

An application to a course at a provider made by an applicant in the UCAS main scheme. Applicants may make up to five main scheme applications.

Country of provider

An applicant may be counted once for each provider country they have applied to in the main scheme. If an applicant has applied to providers in multiple countries then the applicant is counted once within each country of provider applied to.

Domicile

Declared area of permanent residence. The Channel Islands and the Isle of Man have been assigned as 'Not EU'.

Ethnic group

High level grouping of ethnic origin as declared by the applicant: 'Asian', 'Black', 'Mixed', 'White', 'Other', 'Unknown'.

First time applicant

An applicant that did not apply to the UCAS scheme in the previous cycle.

Main scheme

The main UCAS application scheme through which up to five providers/courses can be applied to. This opens in September and closes to new applications on 30 June the following year.

Reapplicant

An applicant that applied to the UCAS scheme in the previous cycle.

Sex

As declared by the applicant.

SIMD 2016

Scottish Index of Multiple Deprivation identifies small area concentrations of multiple deprivation across all of Scotland, providing a relative measure of deprivation among small areas (data zones). In this report, the SIMD 2016 has been used to group areas in each year in the times series.

POLAR3

Developed by HEFCE and classifies small areas across the UK into five groups, according to their level of young participation in HE. Each of these groups represents around 20 per cent of young people, and is ranked from quintile 1 (areas with the lowest young participation rates, considered as the most disadvantaged) to quintile 5 (highest young participation rates, considered most advantaged).

POLAR4

Developed by HEFCE and classifies small areas across the UK into five groups, according to their level of young participation in HE. Each of these groups represents around 20 per cent of young people, and is ranked from quintile 1 (areas with the lowest young participation rates, considered as the most disadvantaged) to quintile 5 (highest young participation rates, considered most advantaged). POLAR4 is the most recent version of the POLAR classification, and is available for the first time in UCAS' reporting since its launch in 2017.

Tariff Group of provider

Providers are grouped as higher, medium or lower tariff based on their average levels of attainment of their accepted applicants (summarised through UCAS Tariff points) in recent cycles. Each group of providers accounted for around a third of all UK 18 year old acceptances in recent cycles.

Subject group

The JACS3 classification used to classify courses into subject groups.