

S85 University of Surrey

Cycle years: 2012 - 2017

Cycle Reference Point: End of Cycle

Applicant coverage: UK domiciled

Reporting groups: Sex, POLAR3, ethnic group

Applicant statistics: June deadline applicants, placed June deadline applicants, all placed applicants, June deadline applicants per 10,000 population, placed June deadline applicants per 10,000 population, all placed applicants per 10,000 population

Application statistics: June deadline applications, offers, offer rate, average offer rate, percentage point difference between offer rate and average offer rate, contribution of group to the average offer rate

Non-disclosure controls: To avoid the disclosure of information about any individual the following measures are taken

- Applicants, placed applicants, applications and offers are rounded to the nearest 5.
- Applicants/placed applicants per 10,000 population figures are reported as 0 if the applicant/placed applicant figures are rounded to 0.
- All statistics related to the offer rate are not reported when the number of applications for a group is less than 10. The percentage point difference between the offer rate and the average offer rate is not reported when the number of applications for a group is less than 50.
- Offer rates are reported as 0% if there are fewer than 5 offers, and 100% if the number of offers is within 5 of the number of applications. When the offer rate is reported as 0% or 100%, it is reported in italics.

Contents:

- 18 year old applicants: P.1
- 18 year old applications: P.2
- 18 year old applicants by sex: P.3
- 18 year old applications by sex: P.4
- 18 year old applicants by POLAR3 quintile: P.7
- 18 year old applications by POLAR3 quintile: P.8
- 18 year old applicants by ethnic group: P.11
- 18 year old applications by ethnic group: P.12
- Applicants (all ages): P.15
- Applications (all ages): P.16
- Applicants (all ages) by sex: P.17
- Applications (all ages) by sex: P.18
- Applicants (all ages) by POLAR3 quintile: P.19
- Applications (all ages) by POLAR3 quintile: P.20
- Applicants (all ages) by ethnic group: P.21
- Applications (all ages) by ethnic group: P.22

P.1 18 year old applicants

Statistic	2012	2013	2014	2015	2016	2017
June deadline applicants	6,355	9,720	13,285	11,475	14,665	14,460
Placed June deadline applicants	880	1,295	1,515	1,350	1,595	1,700
All placed applicants	960	1,415	1,630	1,485	1,755	1,930
June deadline applicants per 10,000 population	82.1	127.7	176.4	149.8	195.6	195.2
Placed June deadline applicants per 10,000	11.4	17.0	20.1	17.6	21.3	23.0
All placed applicants per 10,000 population	12.4	18.6	21.6	19.4	23.4	26.1

P.2 18 year old applications

Statistic	2012	2013	2014	2015	2016	2017
June deadline applications	6,470	9,905	13,590	11,745	15,040	14,765
Offers	5,195	7,125	9,740	7,525	10,240	10,550
Offer rate	80.3%	71.9%	71.7%	64.1%	68.1%	71.5%

P.3 18 year old applicants by sex

Statistic	Sex	2012	2013	2014	2015	2016	2017
June deadline applicants	Men	3,220	4,520	6,565	4,820	6,655	6,530
	Women	3,130	5,205	6,720	6,650	8,005	7,930
Placed June deadline applicants	Men	445	615	785	590	785	815
	Women	435	680	730	760	810	885
All placed applicants	Men	480	670	835	665	850	955
	Women	475	750	790	820	900	975
June deadline applicants per 10,000 population	Men	81.2	115.7	169.5	122.9	173.3	171.9
	Women	83.1	140.4	183.6	178.0	219.1	219.7
Placed June deadline applicants per 10,000 population	Men	11.2	15.7	20.3	15.0	20.5	21.5
	Women	11.5	18.4	19.9	20.4	22.2	24.5
All placed applicants per 10,000 population	Men	12.2	17.1	21.6	17.0	22.2	25.2
	Women	12.7	20.2	21.6	21.9	24.7	27.0

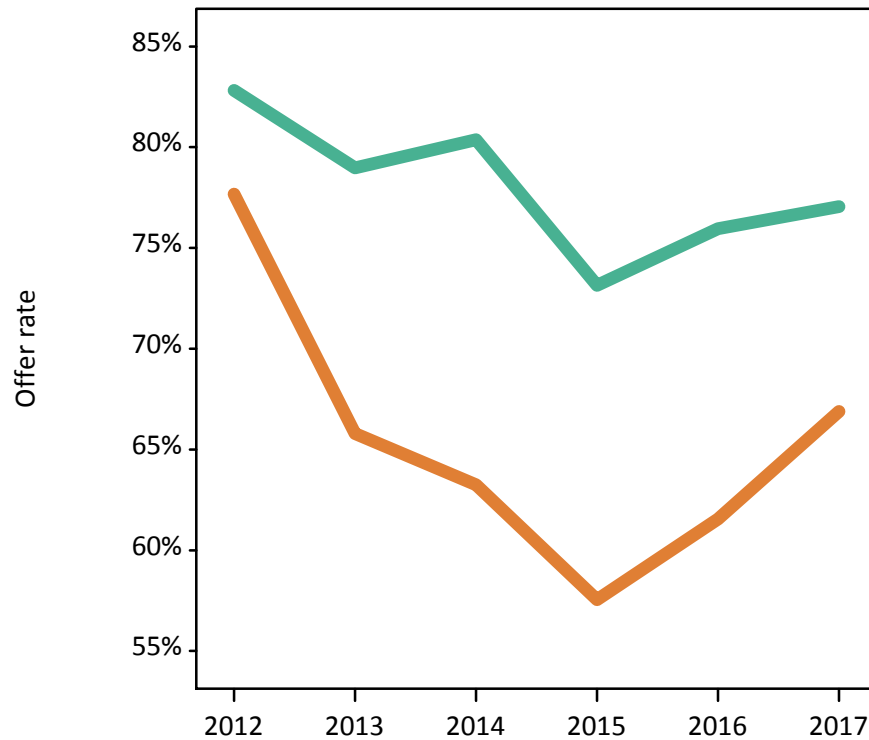
P.4 18 year old applications by sex

Statistic	Sex	2012	2013	2014	2015	2016	2017
June deadline applications	Men	3,295	4,610	6,690	4,920	6,830	6,655
	Women	3,175	5,295	6,900	6,825	8,210	8,105
Offers	Men	2,725	3,640	5,380	3,600	5,185	5,130
	Women	2,465	3,485	4,365	3,930	5,055	5,420
Offer rate	Men	82.8%	79.0%	80.4%	73.1%	76.0%	77.0%
	Women	77.7%	65.8%	63.3%	57.6%	61.6%	66.9%
Average offer rate	Men	83.0%	78.1%	79.8%	72.8%	75.8%	77.0%
	Women	77.5%	66.6%	63.8%	57.8%	61.7%	66.9%
Percentage point difference between offer rate and average offer rate	Men	-0.2	0.9	0.6	0.3	0.1	0.0
	Women	0.2	-0.8	-0.6	-0.2	-0.1	-0.0
Contribution of group to the average offer rate	Men	0.723	0.647	0.668	0.636	0.648	0.642
	Women	0.713	0.693	0.678	0.738	0.707	0.706

P.5 18 year old offer rate by sex

Note: The line for a group is not plotted when that group made fewer than 10 applications in any of the years from 2012-2017.

Men
Women



P.6 Percentage point difference between 18 year old offer rate and average offer rate by sex

Note: The line for a group is not plotted when that group made fewer than 50 applications in any of the years from 2012-2017.

Men
Women



P.7 18 year old applicants by POLAR3 quintile

Statistic	POLAR3 quintile	2012	2013	2014	2015	2016	2017
June deadline applicants	Quintile 1	435	725	1,030	1,005	1,205	1,160
	Quintile 2	785	1,245	1,800	1,560	1,970	1,905
	Quintile 3	1,260	1,985	2,605	2,290	2,995	2,905
	Quintile 4	1,710	2,540	3,400	2,940	3,790	3,760
	Quintile 5	2,155	3,210	4,435	3,655	4,670	4,700
Placed June deadline applicants	Quintile 1	50	70	110	100	125	115
	Quintile 2	110	180	210	185	210	200
	Quintile 3	185	270	290	255	320	355
	Quintile 4	245	355	440	385	425	460
	Quintile 5	290	415	465	425	515	565
All placed applicants	Quintile 1	65	75	120	110	130	125
	Quintile 2	115	195	225	200	230	225
	Quintile 3	195	310	310	285	350	390
	Quintile 4	265	385	470	415	460	515
	Quintile 5	320	450	505	475	580	665
June deadline applicants per 10,000 population	Quintile 1	30.5	52.1	73.9	71.6	89.3	87.2
	Quintile 2	52.2	84.4	123.1	105.2	136.2	134.0
	Quintile 3	81.5	130.3	173.1	149.2	199.2	195.2
	Quintile 4	107.9	162.5	220.5	187.7	245.4	246.2
	Quintile 5	128.4	194.1	272.0	218.4	282.5	286.3
Placed June deadline applicants per 10,000 population	Quintile 1	3.7	5.1	8.0	7.2	9.1	8.6
	Quintile 2	7.2	12.4	14.3	12.5	14.7	14.2
	Quintile 3	11.9	17.8	19.3	16.6	21.2	23.9
	Quintile 4	15.3	22.6	28.4	24.6	27.4	30.1
	Quintile 5	17.3	25.1	28.4	25.3	31.3	34.5
All placed applicants per 10,000 population	Quintile 1	4.4	5.5	8.6	7.8	9.8	9.5
	Quintile 2	7.7	13.2	15.4	13.3	15.8	15.8
	Quintile 3	12.5	20.3	20.6	18.6	23.3	26.3
	Quintile 4	16.6	24.5	30.5	26.6	29.8	33.9
	Quintile 5	19.1	27.3	30.9	28.3	35.1	40.6

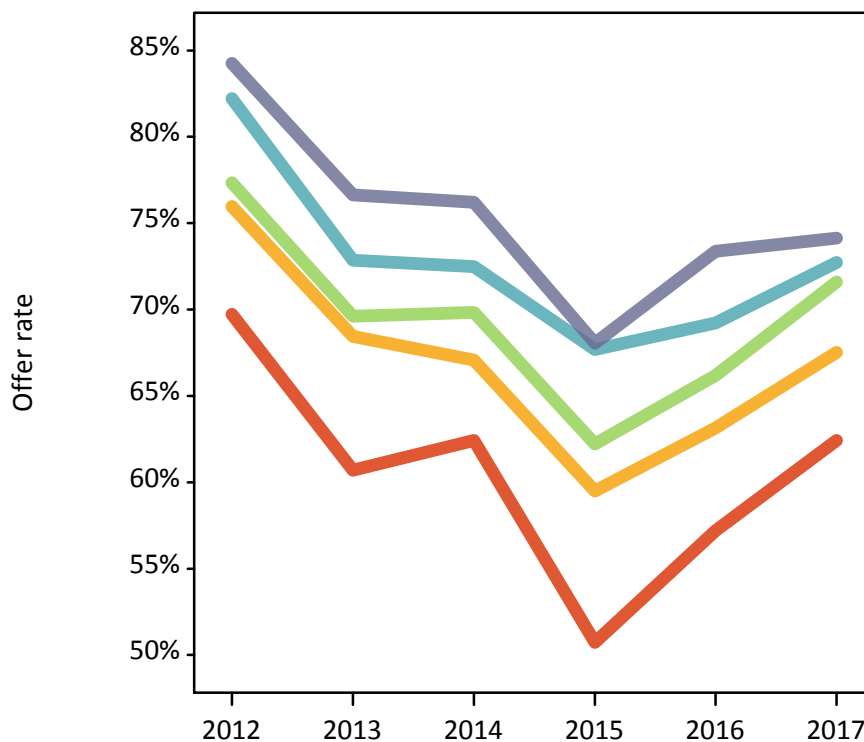
P.8 18 year old applications by POLAR3 quintile

Statistic	POLAR3 quintile	2012	2013	2014	2015	2016	2017
June deadline applications	Quintile 1	445	745	1,060	1,035	1,235	1,180
	Quintile 2	800	1,260	1,845	1,590	2,025	1,940
	Quintile 3	1,275	2,025	2,660	2,345	3,065	2,965
	Quintile 4	1,730	2,595	3,480	3,010	3,900	3,850
	Quintile 5	2,210	3,270	4,530	3,740	4,770	4,800
Offers	Quintile 1	310	450	660	525	705	735
	Quintile 2	605	865	1,240	945	1,280	1,310
	Quintile 3	985	1,410	1,860	1,460	2,030	2,125
	Quintile 4	1,425	1,890	2,520	2,040	2,700	2,800
	Quintile 5	1,860	2,505	3,450	2,545	3,500	3,555
Offer rate	Quintile 1	69.7%	60.7%	62.4%	50.7%	57.2%	62.4%
	Quintile 2	76.0%	68.4%	67.1%	59.5%	63.1%	67.5%
	Quintile 3	77.3%	69.6%	69.8%	62.2%	66.2%	71.6%
	Quintile 4	82.2%	72.8%	72.5%	67.7%	69.2%	72.7%
	Quintile 5	84.2%	76.6%	76.2%	68.1%	73.4%	74.1%
Average offer rate	Quintile 1	71.4%	63.5%	63.3%	53.0%	59.2%	65.0%
	Quintile 2	76.3%	68.8%	67.7%	60.4%	63.9%	68.1%
	Quintile 3	78.4%	69.8%	69.9%	62.6%	66.5%	71.8%
	Quintile 4	82.1%	71.7%	72.5%	67.1%	69.2%	72.1%
	Quintile 5	83.2%	76.6%	75.6%	67.2%	72.3%	73.6%
Percentage point difference between offer rate and average offer rate	Quintile 1	-1.7	-2.8	-0.9	-2.3	-2.0	-2.6
	Quintile 2	-0.3	-0.4	-0.7	-0.9	-0.8	-0.6
	Quintile 3	-1.1	-0.2	-0.1	-0.4	-0.3	-0.2
	Quintile 4	0.1	1.1	-0.1	0.6	0.0	0.6
	Quintile 5	1.0	0.0	0.6	0.8	1.0	0.5
Contribution of group to the average offer rate	Quintile 1	0.171	0.143	0.141	0.151	0.144	0.133
	Quintile 2	0.222	0.182	0.189	0.198	0.185	0.185
	Quintile 3	0.279	0.260	0.248	0.256	0.249	0.244
	Quintile 4	0.331	0.307	0.299	0.307	0.300	0.299
	Quintile 5	0.416	0.394	0.384	0.380	0.371	0.374

P.9 18 year old offer rate by POLAR3 quintile

Note: The line for a group is not plotted when that group made fewer than 10 applications in any of the years from 2012-2017.

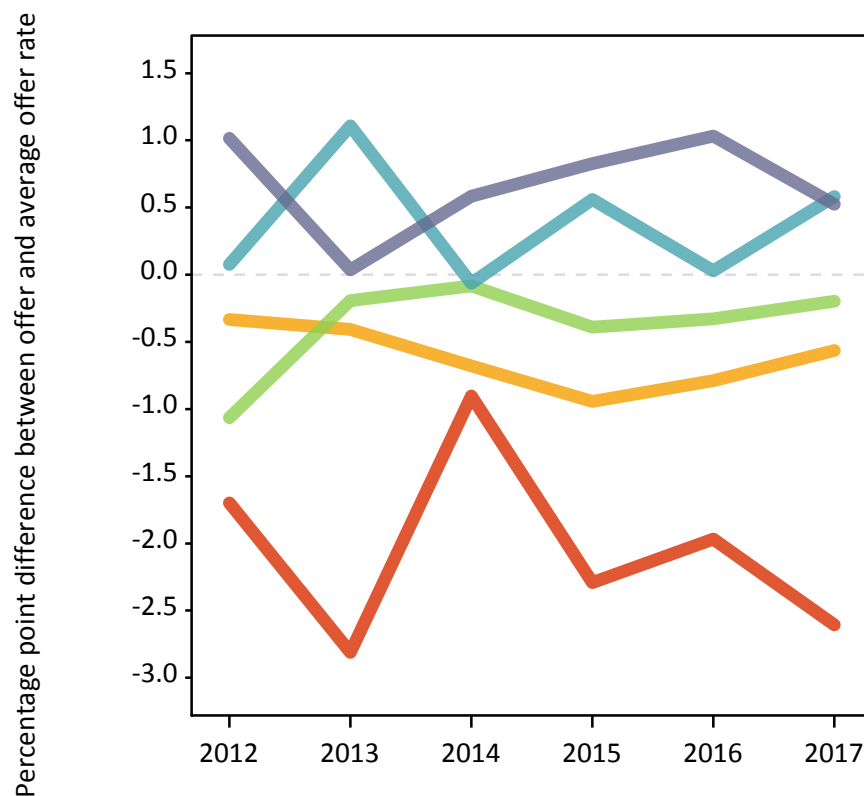
- Quintile 1
- Quintile 2
- Quintile 3
- Quintile 4
- Quintile 5



P.10 Percentage point difference between 18 year old offer rate and average offer rate by POLAR3 quintile

Note: The line for a group is not plotted when that group made fewer than 50 applications in any of the years from 2012-2017.

- Quintile 1
- Quintile 2
- Quintile 3
- Quintile 4
- Quintile 5



P.11 18 year old applicants by ethnic group

Statistic	Ethnic group	2012	2013	2014	2015	2016	2017
June deadline applicants	Asian	850	1,205	1,780	1,335	1,970	2,115
	Black	435	680	880	745	1,080	975
	Mixed	260	435	610	570	790	770
	White	4,665	7,175	9,695	8,615	10,455	10,225
	Other	100	165	250	160	275	305
Placed June deadline applicants	Asian	85	150	230	195	210	285
	Black	55	70	85	75	105	80
	Mixed	30	55	65	55	75	85
	White	685	980	1,085	990	1,140	1,205
	Other	15	30	35	25	45	40
All placed applicants	Asian	110	180	250	220	255	360
	Black	65	80	100	90	120	100
	Mixed	35	60	70	60	85	105
	White	725	1,050	1,155	1,075	1,225	1,300
	Other	20	35	40	30	55	55
June deadline applicants per 10,000 population	Asian	131.4	183.0	262.2	188.3	273.9	287.5
	Black	153.8	229.4	290.6	233.4	345.6	309.2
	Mixed	100.6	160.5	211.3	184.5	251.1	240.2
	White	72.3	114.1	157.2	138.2	172.8	172.3
	Other	114.1	182.0	269.7	165.0	276.3	295.1
Placed June deadline applicants per 10,000 population	Asian	13.3	22.4	34.1	27.7	29.5	38.6
	Black	19.9	24.3	27.7	23.2	33.9	25.4
	Mixed	11.9	20.7	22.9	18.2	23.8	27.1
	White	10.6	15.6	17.6	15.9	18.8	20.3
	Other	18.1	33.1	37.6	27.0	46.2	38.8
All placed applicants per 10,000 population	Asian	16.7	27.3	37.0	31.4	35.3	48.8
	Black	23.4	27.6	33.0	28.3	38.0	32.4
	Mixed	13.4	21.8	24.7	20.1	26.4	33.0
	White	11.3	16.7	18.7	17.3	20.3	21.9
	Other	20.3	40.8	44.1	29.0	53.3	51.5

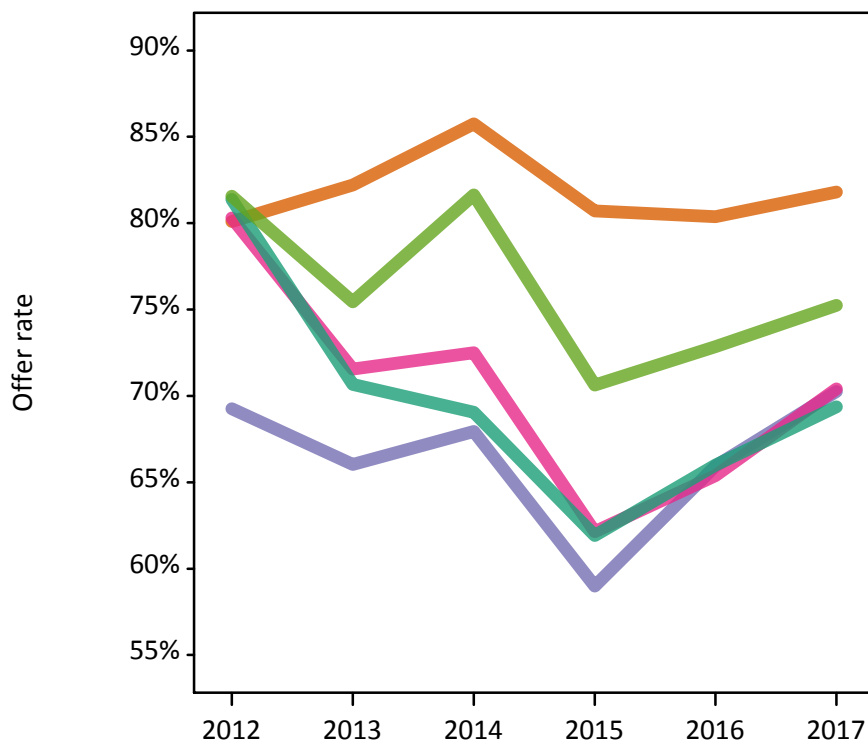
P.12 18 year old applications by ethnic group

Statistic	Ethnic group	2012	2013	2014	2015	2016	2017
June deadline applications	Asian	860	1,220	1,795	1,345	1,995	2,140
	Black	440	685	885	745	1,090	980
	Mixed	265	435	620	590	805	785
	White	4,765	7,340	9,960	8,850	10,780	10,475
	Other	105	165	255	160	280	305
Offers	Asian	690	1,005	1,540	1,085	1,600	1,750
	Black	305	455	600	440	720	690
	Mixed	210	310	450	365	525	550
	White	3,875	5,185	6,875	5,480	7,110	7,265
	Other	85	125	210	115	205	230
Offer rate	Asian	80.1%	82.2%	85.8%	80.7%	80.4%	81.8%
	Black	69.2%	66.0%	67.9%	59.0%	65.9%	70.3%
	Mixed	80.3%	71.6%	72.5%	62.1%	65.4%	70.4%
	White	81.4%	70.7%	69.1%	61.9%	66.0%	69.4%
	Other	81.6%	75.4%	81.6%	70.6%	72.9%	75.2%
Average offer rate	Asian	80.8%	81.4%	84.8%	78.9%	79.9%	81.7%
	Black	71.7%	68.7%	71.6%	60.9%	67.3%	72.5%
	Mixed	80.7%	70.2%	73.7%	63.1%	66.1%	72.0%
	White	81.0%	70.6%	68.9%	62.0%	65.9%	68.9%
	Other	78.9%	74.9%	79.4%	69.3%	74.3%	79.3%
Percentage point difference between offer rate and average offer rate	Asian	-0.7	0.8	1.0	1.9	0.5	0.1
	Black	-2.4	-2.6	-3.7	-1.9	-1.4	-2.2
	Mixed	-0.4	1.3	-1.1	-1.0	-0.8	-1.6
	White	0.3	0.0	0.1	-0.1	0.1	0.4
	Other	2.6	0.6	2.2	1.3	-1.5	-4.1
Contribution of group to the average offer rate	Asian	0.257	0.238	0.240	0.239	0.236	0.267
	Black	0.218	0.191	0.181	0.181	0.176	0.159
	Mixed	0.152	0.106	0.104	0.120	0.110	0.108
	White	0.780	0.781	0.774	0.791	0.760	0.758
	Other	0.115	0.111	0.088	0.101	0.091	0.100

P.13 18 year old offer rate by ethnic group

Note: The line for a group is not plotted when that group made fewer than 10 applications in any of the years from 2012-2017.

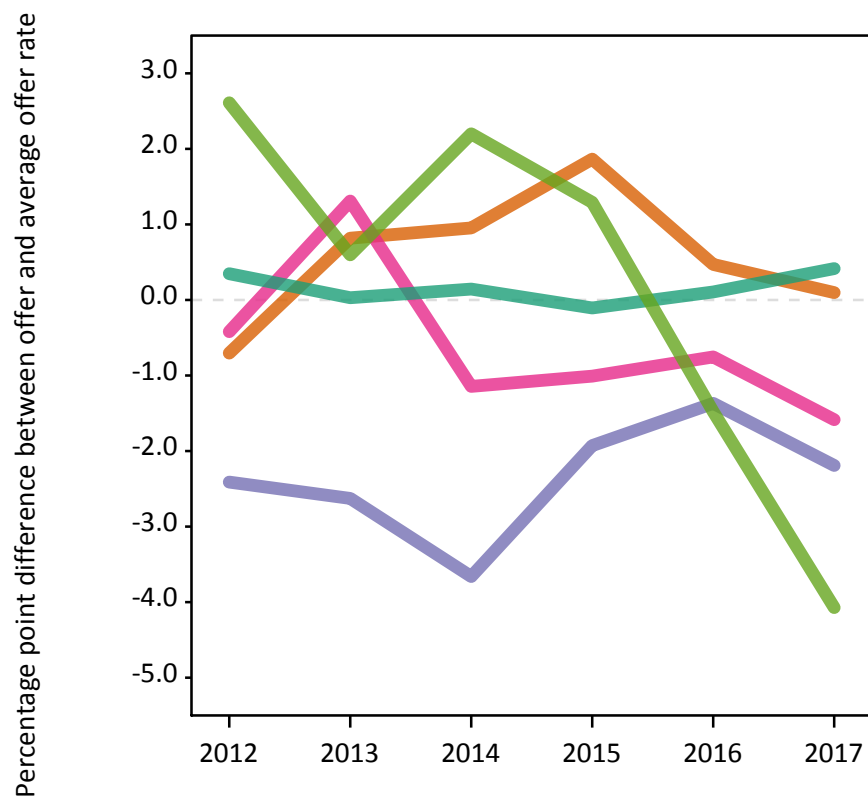
- Asian
- Black
- Mixed
- White
- Other



P.14 Percentage point difference between 18 year old offer rate and average offer rate by ethnic group

Note: The line for a group is not plotted when that group made fewer than 50 applications in any of the years from 2012-2017.

- Asian
- Black
- Mixed
- White
- Other



P.15 Applicants (all ages)

Statistic	2012	2013	2014	2015	2016	2017
June deadline applicants	11,470	16,840	22,415	20,505	24,845	23,100
Placed June deadline applicants	1,465	2,025	2,395	2,360	2,680	2,785
All placed applicants	1,660	2,275	2,615	2,615	2,970	3,140

P.16 Applications (all ages)

Statistic	2012	2013	2014	2015	2016	2017
June deadline applications	11,800	17,255	23,055	21,185	25,585	23,755
Offers	7,140	9,690	13,220	11,120	14,490	14,615
Offer rate	60.5%	56.1%	57.4%	52.5%	56.6%	61.5%

P.17 Applicants (all ages) by sex

Statistic	Sex	2012	2013	2014	2015	2016	2017
June deadline applicants	Men	5,045	7,180	10,120	8,385	10,725	10,105
	Women	6,425	9,660	12,290	12,115	14,120	12,995
Placed June deadline applicants	Men	645	875	1,165	1,015	1,245	1,270
	Women	820	1,150	1,230	1,345	1,435	1,515
All placed applicants	Men	735	995	1,260	1,140	1,370	1,475
	Women	925	1,285	1,355	1,475	1,600	1,670

P.18 Applications (all ages) by sex

Statistic	Sex	2012	2013	2014	2015	2016	2017
June deadline applications	Men	5,185	7,360	10,365	8,650	11,035	10,365
	Women	6,615	9,900	12,690	12,535	14,550	13,385
Offers	Men	3,580	4,895	7,105	5,325	7,255	7,115
	Women	3,560	4,795	6,115	5,800	7,235	7,500
Offer rate	Men	69.0%	66.5%	68.6%	61.6%	65.7%	68.6%
	Women	53.8%	48.4%	48.2%	46.3%	49.7%	56.0%

P.19 Applicants (all ages) by POLAR3 quintile

Statistic	POLAR3 quintile	2012	2013	2014	2015	2016	2017
June deadline applicants	Quintile 1	1,050	1,545	2,020	2,000	2,360	2,115
	Quintile 2	1,515	2,235	3,165	2,895	3,440	3,100
	Quintile 3	2,385	3,535	4,495	4,255	5,180	4,755
	Quintile 4	2,920	4,275	5,685	5,155	6,270	5,810
	Quintile 5	3,575	5,215	7,005	6,150	7,520	7,250
Placed June deadline applicants	Quintile 1	120	140	195	200	230	220
	Quintile 2	185	275	325	330	340	330
	Quintile 3	290	410	475	460	550	570
	Quintile 4	385	525	675	630	690	725
	Quintile 5	485	665	720	730	865	925
All placed applicants	Quintile 1	145	160	205	220	245	240
	Quintile 2	200	305	355	365	380	365
	Quintile 3	320	475	515	515	600	630
	Quintile 4	435	590	730	695	760	820
	Quintile 5	555	745	800	820	980	1,070

P.20 Applications (all ages) by POLAR3 quintile

Statistic	POLAR3 quintile	2012	2013	2014	2015	2016	2017
June deadline applications	Quintile 1	1,085	1,580	2,095	2,075	2,425	2,160
	Quintile 2	1,555	2,295	3,255	2,965	3,540	3,180
	Quintile 3	2,445	3,615	4,600	4,395	5,330	4,895
	Quintile 4	3,005	4,370	5,845	5,325	6,475	5,990
	Quintile 5	3,680	5,355	7,220	6,365	7,745	7,460
Offers	Quintile 1	485	675	955	830	1,095	1,120
	Quintile 2	850	1,210	1,690	1,425	1,795	1,805
	Quintile 3	1,385	1,920	2,560	2,240	2,930	2,945
	Quintile 4	1,910	2,530	3,420	2,910	3,760	3,805
	Quintile 5	2,505	3,340	4,570	3,685	4,880	4,900
Offer rate	Quintile 1	44.8%	42.5%	45.7%	40.1%	45.1%	51.8%
	Quintile 2	54.5%	52.7%	52.0%	48.0%	50.8%	56.9%
	Quintile 3	56.6%	53.0%	55.7%	51.0%	55.0%	60.1%
	Quintile 4	63.5%	57.8%	58.6%	54.7%	58.0%	63.5%
	Quintile 5	68.0%	62.4%	63.3%	57.9%	63.0%	65.7%

P.21 Applicants (all ages) by ethnic group

Statistic	Ethnic group	2012	2013	2014	2015	2016	2017
June deadline applicants	Asian	1,630	2,125	3,030	2,555	3,480	3,435
	Black	1,505	1,905	2,160	2,065	2,540	2,125
	Mixed	460	725	1,035	995	1,275	1,225
	White	7,555	11,620	15,590	14,365	16,795	15,620
	Other	230	335	445	385	545	545
Placed June deadline applicants	Asian	155	250	390	345	395	475
	Black	125	145	150	170	210	175
	Mixed	45	80	105	90	135	140
	White	1,100	1,495	1,685	1,685	1,840	1,900
	Other	30	45	50	55	75	80
All placed applicants	Asian	200	305	435	400	460	590
	Black	155	175	180	205	240	210
	Mixed	60	90	115	105	150	170
	White	1,195	1,635	1,805	1,830	2,000	2,055
	Other	35	55	60	60	90	95

P.22 Applications (all ages) by ethnic group

Statistic	Ethnic group	2012	2013	2014	2015	2016	2017
June deadline applications	Asian	1,665	2,160	3,095	2,590	3,540	3,495
	Black	1,530	1,925	2,190	2,110	2,570	2,145
	Mixed	470	735	1,065	1,040	1,305	1,255
	White	7,820	11,960	16,100	14,905	17,410	16,150
	Other	235	340	455	395	555	560
Offers	Asian	1,030	1,490	2,255	1,760	2,445	2,560
	Black	540	750	940	835	1,230	1,130
	Mixed	285	415	640	560	750	770
	White	5,090	6,735	8,990	7,655	9,590	9,655
	Other	145	215	300	225	350	395
Offer rate	Asian	62.0%	69.0%	73.0%	68.0%	69.0%	73.3%
	Black	35.4%	38.9%	43.0%	39.5%	47.8%	52.8%
	Mixed	60.6%	56.3%	60.3%	53.8%	57.4%	61.3%
	White	65.1%	56.3%	55.8%	51.4%	55.1%	59.8%
	Other	62.4%	63.2%	65.6%	57.6%	63.0%	70.4%

Technical Notes and Definitions

UCAS undergraduate scheme

Adjustment

Adjustment allows applicants who have met and exceeded the terms of their conditional firm offer to seek and find a place at another provider whilst keeping their place at their original firm choice provider.

Clearing

Clearing is a route for applicants that are not placed and holding no offers to find a place on courses with vacancies.

Cycle year

The UCAS application cycle which runs from September to October the following year. For example the 2017 cycle runs from September 2016 through to October 2017.

End of cycle

The point in the cycle to which the numbers in this report refer, and the point at which the cycle is closed such that no more applications or offers can be made, and no more applicants can be placed. Numbers reported at the end of cycle exclude information on a small number of applicants who cancelled during the cycle.

Extra

Applicants who are unsuccessful in obtaining an offer or decline all offers may be eligible to apply through Extra, where they can apply to one further course at a time. Extra operates from 25 February until early July. It provides applicants who are eligible the possibility of obtaining an offer before exam results are published and Clearing starts.

June 30 deadline

The deadline for main scheme applications. Applicants who apply after this date will go directly into Clearing.

Record of Prior Acceptance (RPA)

RPA is an acceptance route used when a provider informs UCAS of applicants it has accepted outside of the normal application process (e.g. individuals who have applied directly to the provider).

Reporting groups

Ethnic group

High level grouping of ethnic origin as declared by the applicant: 'White', 'Black', 'Asian', 'Mixed', 'Other', 'Unknown'. Applicants who declare themselves as 'Unknown' ethnic origin are not reported in these tables, but are included in the associated csv data file.

POLAR3 quintile

Developed by HEFCE, POLAR3 classifies small areas across the UK into five groups according to their level of young participation in Higher Education. Each of these groups represents around 20 per cent of young people and is ranked from Quintile 1 (areas with the lowest young participation rates, considered as the most disadvantaged) to Quintile 5 (highest young participation rates, considered most advantaged). POLAR3 is based on the participation rates of young people between 2005 and 2009 who entered Higher Education between 2005-06 and 2010-11, therefore is most suitable for applicants aged 19 and under. These groups are assigned using the postcode declared by the applicant at the time of their application. If a UK postcode is invalid, considered unsafe for measurement or there is no link to Census geography possible then the applicant is not assigned to a quintile. Applicants with no POLAR3 quintile are not reported.

Sex

Sex as declared by the applicant.

SIMD 2016 quintile

Scottish index of multiple deprivation (SIMD) identifies small area concentrations of multiple deprivation across all of Scotland, providing a relative measure of deprivation amongst 6505 small areas (data zones) based on 7 socio-economic domains. These small areas are classified into five groups ranked from Quintile 1 (considered the most deprived) to Quintile 5 (considered least deprived), with equal populations in each quintile. Quintiles are assigned using the postcode declared by the applicant, applicants declaring invalid postcodes are classified as 'Not assigned' and are not reported.

SIMD is only defined for applicants domiciled in Scotland, therefore any applicants domiciled outside of Scotland cannot be assigned to an SIMD quintile and so are not reported for this measure.

SIMD is only reported for providers in Scotland. Application and entry rates by SIMD are reported in the 2017 End of Cycle Report and the 2017 cycle January deadline application rate report.

Statistics reported in the tables

All placed applicants

The number of applicants placed for entry into higher education at the provider through one of their choices, including any choices made through Extra, or via Adjustment, Clearing or RPA.

All placed applicants per 10,000 population

The number of total UK domiciled 18 year old placed applicants for entry into higher education at the provider divided by the number of UK 18 year olds in the population, multiplied by 10,000. This gives the number of 18 year olds, for every 10,000 in the population, that were placed at the provider through one of their choices, including any choices made through Extra, or via Adjustment, Clearing or RPA. It is an alternative way of expressing the entry rate to a provider. By referencing the underlying population this statistic shows how the number of placed applicants is changing in relation to the available pool of potential applicants and so gives the chance that somebody from the group will be placed at a provider.

This statistic is only reported for 18 year olds.

Average offer rate

The offer rate that you might expect if the predicted grades and subject choice of applicants were the only factors that influenced whether an applicant was made an offer by the provider. The average offer rate is calculated by dividing applicants according to their specific combination of grades (for A levels the best three predicted grades are used, for BTECs, International Baccalaureate and Scottish Highers and Advanced Highers, predicted grades along with any grades already achieved upon applying are used) and subject choice. For each combination the number of main scheme offers is divided by the number of main scheme applications, to give an overall offer rate. This is then multiplied by the number of applications made by the group for which the average offer rate is being calculated (for example POLAR3 quintile 1), to give an average number of offers for that group. These average number of offers are then added together across all combinations of predicted grade and subject and divided by the number of main scheme applications from the group to give the average offer rate.

The average offer rate does not attempt to control for any other factors that may play a part in the decision to make an offer, such as the subject of the qualifications studied, their relevance to a course, or the grade in each subject; higher numbers of A levels being studied; the exact profile of grades predicted; personal statements; teacher references; interviews; or any other criteria (such as work experience or portfolios) that may be part of the admissions decision.

This statistic is only reported for 18 year olds.

Contribution of group to the average offer rate

The way in which the average offer rate is defined means that the pattern of application and offers of a group (for example POLAR3 quintile 1) will always contribute, in part, to the average offer rate for that group. When this contribution is large, the average offer rate will mainly reflect the patterns for the group, meaning that the value of the average offer rate will be similar to the offer rate, the percentage point difference statistic will be small, and any real difference between the offer rate and what might be expected given the predicted grades and subject choices of the applicants will be difficult to detect.

Values of the contribution of group to the average offer rate range between 0 and 1. The closer the value is to 1 the greater the contribution a group makes to its own average offer rate.

This statistic is only reported for 18 year olds.

Placed June deadline applicants

An applicant who has been placed for entry into higher education at the provider through a June deadline application.

Placed June deadline applicants per 10,000 population

The number of UK domiciled 18 year old placed June deadline applicants at the provider divided by the number of UK 18 year olds in the population, multiplied by 10,000. This gives the number of 18 year olds, for every 10,000 in the population, that were placed at the provider through one of their June deadline applications. It is an alternative way of expressing the entry rate to a provider, but for placed June deadline applicants only. By referencing the underlying population this statistic shows how the number of placed June deadline applicants is changing in relation to the available pool of potential 18 year old applicants and so gives the chance that somebody from the group will be placed at a provider through a June deadline application.

This statistic is only reported for 18 year olds.

June deadline applications

An application (or choice) to a course in higher education to the provider that is made by the June 30 deadline. Each applicant can make up to five choices this way. The number of June deadline applications does not include choices made through the following routes: Clearing, Extra, Adjustment and RPAs. Applications made to October deadline courses received after the October deadline are not included in these statistics.

June deadline applicants

The number of applicants that made at least one application to the provider by the June 30 deadline.

June deadline applicants per 10,000 population

The number of UK domiciled 18 year old June deadline applicants to the provider divided by the number of UK 18 year olds in the population, multiplied by 10,000. This gives the number of 18 year olds, for every 10,000 in the population, who applied by the June 30 deadline. It is equivalent to the application rate. By referencing the underlying population this statistic shows how the number of June deadline applicants is changing in relation to the available pool of potential 18 year old applicants and so gives the chance that somebody from the group will apply to a provider by the June 30 deadline.

This statistic is only reported for 18 year olds.

Offers

An offer is defined as a provider's decision in response to an application to offer a place to an applicant, often subject to the applicant satisfying academic and/or other criteria, via a June deadline application (i.e. does not cover choices made through the following routes: Clearing, Extra, Adjustment and RPAs).

Offer rate

The number of offers made divided by the number of June deadline applications. This gives the proportion of all June deadline applications to the provider that received an offer.

Percentage point difference between offer rate and average offer rate

The offer rate minus the average offer rate.

The percentage point difference can be compared to the expected range of statistical variation resulting from the calculation of the average offer rate using the Average Offer Rate Lookup Table. Where the value of the percentage point difference lies outside of this range, the percentage point difference may be considered to represent a real difference between the offer rate and the average offer rate.

Other definitions

Age

This analysis uses country-specific age definitions that align with the cut off points for school and college cohorts within the different administrations of the UK. For England and Wales, ages are defined on the 31 August, for Northern Ireland on the 1 July and for Scotland on the 28 February the following year. Defining ages in this way matches the assignment of children to school cohorts. For applicants outside of the UK a cohort cut off of 31 August has been used. Numbers for applicants aged 17 and under are included in the tables that report numbers for all age groups. Providers in Scotland typically receive a higher proportion of applicants aged 17 and under compared to providers elsewhere in the UK.

Provider

A higher education provider - a university or college.

UK domiciled

Declared area of permanent residence within England, Northern Ireland, Scotland and Wales. Applicants from the Channel Islands and Isle of Man are not included.