

S82 University of Suffolk

Cycle years: 2012 - 2017

Cycle Reference Point: End of Cycle

Applicant coverage: UK domiciled

Reporting groups: Sex, POLAR3, ethnic group

Applicant statistics: June deadline applicants, placed June deadline applicants, all placed applicants, June deadline applicants per 10,000 population, placed June deadline applicants per 10,000 population, all placed applicants per 10,000 population

Application statistics: June deadline applications, offers, offer rate, average offer rate, percentage point difference between offer rate and average offer rate, contribution of group to the average offer rate

Non-disclosure controls: To avoid the disclosure of information about any individual the following measures are taken

- Applicants, placed applicants, applications and offers are rounded to the nearest 5.
- Applicants/placed applicants per 10,000 population figures are reported as 0 if the applicant/placed applicant figures are rounded to 0.
- All statistics related to the offer rate are not reported when the number of applications for a group is less than 10. The percentage point difference between the offer rate and the average offer rate is not reported when the number of applications for a group is less than 50.
- Offer rates are reported as 0% if there are fewer than 5 offers, and 100% if the number of offers is within 5 of the number of applications. When the offer rate is reported as 0% or 100%, it is reported in italics.

Contents:

18 year old applicants:	P.1
18 year old applications:	P.2
18 year old applicants by sex:	P.3
18 year old applications by sex:	P.4
18 year old applicants by POLAR3 quintile:	P.7
18 year old applications by POLAR3 quintile:	P.8
18 year old applicants by ethnic group:	P.11
18 year old applications by ethnic group:	P.12
Applicants (all ages):	P.15
Applications (all ages):	P.16
Applicants (all ages) by sex:	P.17
Applications (all ages) by sex:	P.18
Applicants (all ages) by POLAR3 quintile:	P.19
Applications (all ages) by POLAR3 quintile:	P.20
Applicants (all ages) by ethnic group:	P.21
Applications (all ages) by ethnic group:	P.22

P.1 18 year old applicants

Statistic	2012	2013	2014	2015	2016	2017
June deadline applicants	870	985	1,195	1,175	1,000	1,250
Placed June deadline applicants	215	235	215	285	275	265
All placed applicants	290	305	285	365	330	355
June deadline applicants per 10,000 population	11.2	13.0	15.9	15.3	13.3	16.9
Placed June deadline applicants per 10,000	2.8	3.1	2.8	3.7	3.7	3.6
All placed applicants per 10,000 population	3.7	4.0	3.8	4.8	4.4	4.8

P.2 18 year old applications

Statistic	2012	2013	2014	2015	2016	2017
June deadline applications	985	1,075	1,290	1,305	1,095	1,350
Offers	710	790	900	925	795	990
Offer rate	72.1%	73.3%	69.7%	70.9%	72.4%	73.5%

P.3 18 year old applicants by sex

Statistic	Sex	2012	2013	2014	2015	2016	2017
June deadline applicants	Men	235	245	325	325	300	405
	Women	635	740	870	850	700	845
Placed June deadline applicants	Men	60	55	70	90	100	85
	Women	160	180	140	195	175	180
All placed applicants	Men	75	85	90	105	115	115
	Women	215	220	195	260	215	240
June deadline applicants per 10,000 population	Men	6.0	6.3	8.4	8.3	7.8	10.6
	Women	16.8	20.0	23.8	22.7	19.1	23.5
Placed June deadline applicants per 10,000 population	Men	1.5	1.4	1.9	2.2	2.6	2.2
	Women	4.2	4.9	3.9	5.2	4.8	5.0
All placed applicants per 10,000 population	Men	1.9	2.2	2.3	2.7	3.0	3.0
	Women	5.7	5.9	5.3	7.0	5.9	6.6

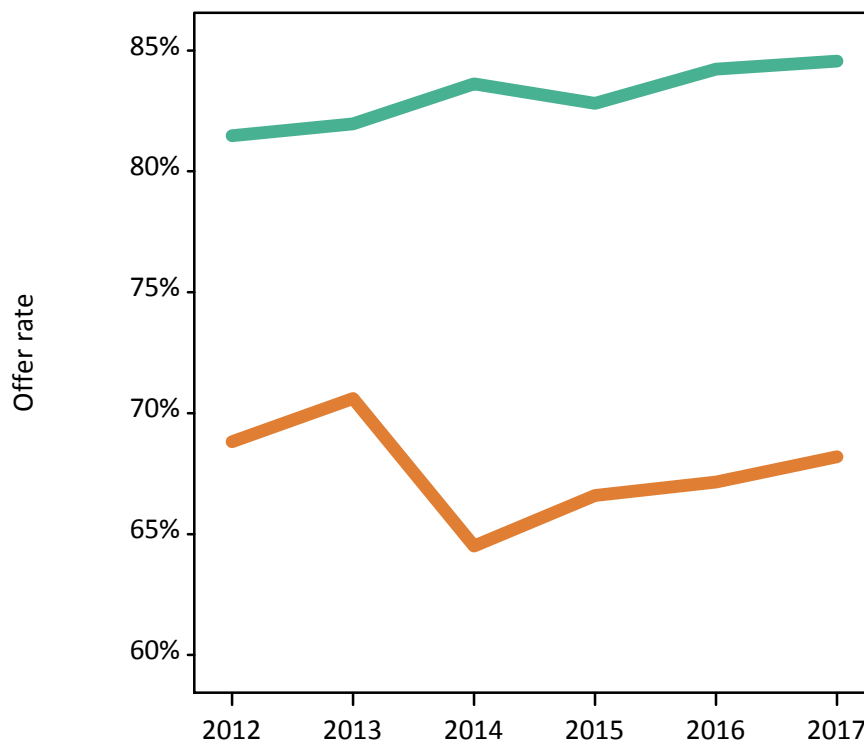
P.4 18 year old applications by sex

Statistic	Sex	2012	2013	2014	2015	2016	2017
June deadline applications	Men	260	255	350	350	335	435
	Women	730	820	940	955	760	915
Offers	Men	210	210	290	290	285	365
	Women	500	580	605	635	510	625
Offer rate	Men	81.5%	82.0%	83.6%	82.8%	84.2%	84.6%
	Women	68.8%	70.6%	64.5%	66.6%	67.1%	68.2%
Average offer rate	Men	80.9%	80.4%	82.7%	82.4%	83.9%	84.0%
	Women	69.0%	71.1%	64.9%	66.7%	67.3%	68.5%
Percentage point difference between offer rate and average offer rate	Men	0.6	1.5	0.9	0.4	0.3	0.6
	Women	-0.2	-0.5	-0.3	-0.2	-0.1	-0.3
Contribution of group to the average offer rate	Men	0.670	0.626	0.640	0.597	0.743	0.748
	Women	0.883	0.884	0.867	0.853	0.887	0.881

P.5 18 year old offer rate by sex

Note: The line for a group is not plotted when that group made fewer than 10 applications in any of the years from 2012-2017.

Men
Women



P.6 Percentage point difference between 18 year old offer rate and average offer rate by sex

Note: The line for a group is not plotted when that group made fewer than 50 applications in any of the years from 2012-2017.

Men
Women



P.7 18 year old applicants by POLAR3 quintile

Statistic	POLAR3 quintile	2012	2013	2014	2015	2016	2017
June deadline applicants	Quintile 1	185	195	240	240	195	275
	Quintile 2	165	225	235	230	225	255
	Quintile 3	210	200	280	270	225	270
	Quintile 4	195	215	270	260	205	245
	Quintile 5	115	155	170	170	145	200
Placed June deadline applicants	Quintile 1	55	55	50	70	65	60
	Quintile 2	50	45	45	60	55	45
	Quintile 3	45	60	55	60	65	50
	Quintile 4	45	45	45	60	45	60
	Quintile 5	25	30	20	35	40	40
All placed applicants	Quintile 1	70	75	65	85	75	80
	Quintile 2	60	60	65	70	65	70
	Quintile 3	60	70	65	85	80	70
	Quintile 4	65	60	55	80	55	75
	Quintile 5	35	40	30	45	50	55
June deadline applicants per 10,000 population	Quintile 1	13.1	14.0	17.2	17.1	14.3	20.6
	Quintile 2	11.1	15.1	16.0	15.4	15.6	17.8
	Quintile 3	13.5	13.1	18.6	17.7	15.1	18.1
	Quintile 4	12.2	13.6	17.5	16.6	13.3	16.0
	Quintile 5	6.9	9.4	10.4	10.0	8.9	12.2
Placed June deadline applicants per 10,000 population	Quintile 1	3.8	3.9	3.4	4.9	4.9	4.7
	Quintile 2	3.3	3.1	3.1	3.9	3.8	3.3
	Quintile 3	2.9	3.9	3.5	4.0	4.3	3.4
	Quintile 4	2.7	2.8	2.9	3.7	3.0	4.0
	Quintile 5	1.4	1.8	1.3	2.2	2.4	2.5
All placed applicants per 10,000 population	Quintile 1	5.0	5.3	4.7	5.9	5.6	6.0
	Quintile 2	4.0	3.9	4.4	4.8	4.4	4.8
	Quintile 3	3.8	4.7	4.5	5.5	5.3	4.7
	Quintile 4	4.0	3.8	3.7	5.2	3.7	5.0
	Quintile 5	2.0	2.5	1.8	2.7	3.1	3.4

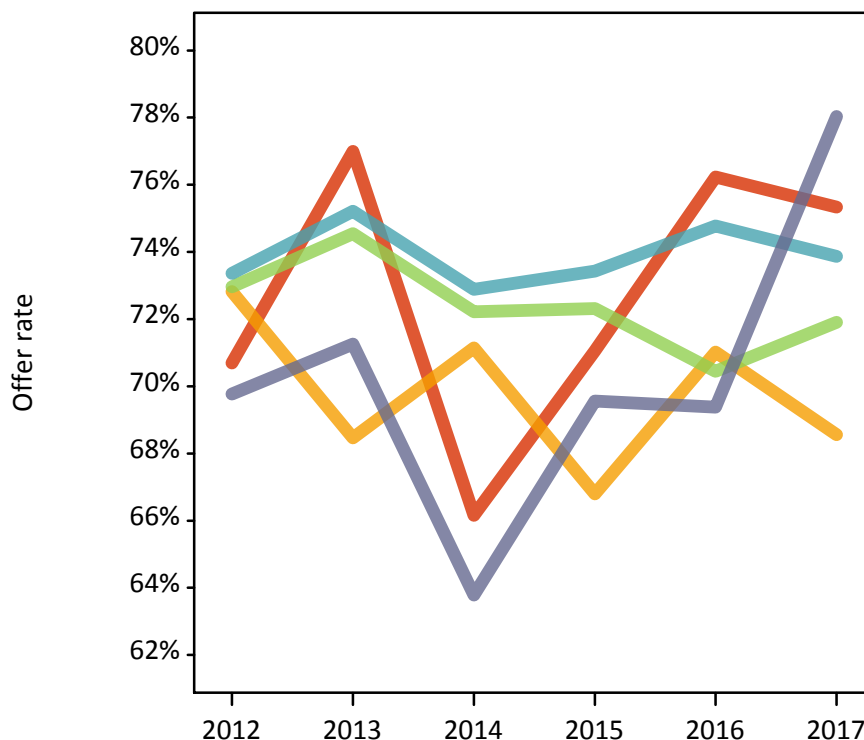
P.8 18 year old applications by POLAR3 quintile

Statistic	POLAR3 quintile	2012	2013	2014	2015	2016	2017
June deadline applications	Quintile 1	215	215	260	265	225	300
	Quintile 2	195	240	255	255	245	265
	Quintile 3	235	220	305	305	245	300
	Quintile 4	215	235	285	285	220	265
	Quintile 5	130	165	185	185	160	215
Offers	Quintile 1	150	165	170	190	170	225
	Quintile 2	140	165	180	170	175	180
	Quintile 3	170	165	220	220	175	215
	Quintile 4	155	175	205	210	165	195
	Quintile 5	90	120	120	130	110	165
Offer rate	Quintile 1	70.7%	77.0%	66.2%	71.1%	76.2%	75.3%
	Quintile 2	72.8%	68.5%	71.1%	66.8%	71.0%	68.6%
	Quintile 3	73.0%	74.5%	72.2%	72.3%	70.4%	71.9%
	Quintile 4	73.4%	75.2%	72.9%	73.4%	74.8%	73.9%
	Quintile 5	69.8%	71.3%	63.8%	69.6%	69.4%	78.0%
Average offer rate	Quintile 1	71.4%	73.7%	68.0%	70.9%	73.7%	74.2%
	Quintile 2	72.9%	70.1%	72.3%	67.7%	68.7%	69.7%
	Quintile 3	74.0%	75.3%	70.4%	74.4%	74.3%	72.7%
	Quintile 4	72.1%	73.5%	70.7%	69.7%	74.8%	74.0%
	Quintile 5	68.8%	74.5%	66.1%	70.9%	70.4%	76.9%
Percentage point difference between offer rate and average offer rate	Quintile 1	-0.7	3.3	-1.9	0.1	2.5	1.1
	Quintile 2	-0.1	-1.6	-1.1	-0.9	2.3	-1.1
	Quintile 3	-1.0	-0.7	1.9	-2.1	-3.8	-0.8
	Quintile 4	1.3	1.7	2.2	3.7	-0.1	-0.1
	Quintile 5	0.9	-3.3	-2.3	-1.3	-1.1	1.1
Contribution of group to the average offer rate	Quintile 1	0.427	0.438	0.426	0.398	0.442	0.409
	Quintile 2	0.440	0.412	0.390	0.385	0.449	0.379
	Quintile 3	0.474	0.393	0.418	0.447	0.414	0.430
	Quintile 4	0.488	0.426	0.417	0.428	0.420	0.391
	Quintile 5	0.435	0.400	0.371	0.404	0.398	0.384

P.9 18 year old offer rate by POLAR3 quintile

Note: The line for a group is not plotted when that group made fewer than 10 applications in any of the years from 2012-2017.

- Quintile 1
- Quintile 2
- Quintile 3
- Quintile 4
- Quintile 5



P.10 Percentage point difference between 18 year old offer rate and average offer rate by POLAR3 quintile

Note: The line for a group is not plotted when that group made fewer than 50 applications in any of the years from 2012-2017.

- Quintile 1
- Quintile 2
- Quintile 3
- Quintile 4
- Quintile 5



P.11 18 year old applicants by ethnic group

Statistic	Ethnic group	2012	2013	2014	2015	2016	2017
June deadline applicants	Asian	25	35	55	55	40	65
	Black	20	35	60	60	35	50
	Mixed	25	25	40	40	25	30
	White	800	885	1,030	1,010	890	1,095
	Other	0	5	10	10	10	5
Placed June deadline applicants	Asian	5	0	5	5	5	10
	Black	0	0	5	5	5	5
	Mixed	5	15	5	10	5	5
	White	205	215	200	265	260	245
	Other	0	0	0	0	0	0
All placed applicants	Asian	5	0	5	10	5	15
	Black	5	10	5	5	5	10
	Mixed	10	15	10	15	5	5
	White	265	280	260	330	305	320
	Other	0	0	0	5	0	0
June deadline applicants per 10,000 population	Asian	3.7	5.3	7.8	7.6	5.6	8.7
	Black	6.4	11.1	19.8	18.8	11.8	15.9
	Mixed	9.6	9.6	14.3	12.3	7.6	10.0
	White	12.4	14.1	16.7	16.2	14.7	18.5
	Other	0.0	4.4	9.7	8.3	10.0	5.8
Placed June deadline applicants per 10,000 population	Asian	0.6	0.0	0.4	0.4	0.8	1.5
	Black	0.0	0.0	1.3	1.9	1.3	1.6
	Mixed	2.7	4.8	2.1	3.2	1.3	1.2
	White	3.1	3.4	3.2	4.2	4.3	4.1
	Other	0.0	0.0	0.0	0.0	0.0	0.0
All placed applicants per 10,000 population	Asian	1.1	0.0	0.9	1.6	0.8	2.2
	Black	2.5	3.0	1.3	2.2	1.3	2.5
	Mixed	3.1	5.5	3.8	4.2	2.2	1.9
	White	4.1	4.4	4.2	5.3	5.1	5.4
	Other	0.0	0.0	0.0	4.1	0.0	0.0

P.12 18 year old applications by ethnic group

Statistic	Ethnic group	2012	2013	2014	2015	2016	2017
June deadline applications	Asian	25	35	55	60	40	70
	Black	20	35	60	60	40	50
	Mixed	30	25	40	40	25	30
	White	910	975	1,125	1,135	980	1,190
	Other	0	5	10	10	10	5
Offers	Asian	15	20	25	25	25	40
	Black	10	20	30	35	25	35
	Mixed	25	20	30	35	20	25
	White	660	725	810	825	715	885
	Other	0	5	5	5	10	5
Offer rate	Asian	61.5%	50.0%	44.4%	41.4%	56.1%	60.3%
	Black	61.1%	57.6%	48.3%	56.7%	63.2%	68.0%
	Mixed	80.0%	100.0%	69.0%	85.4%	100.0%	78.1%
	White	72.5%	74.4%	72.1%	73.0%	72.8%	74.3%
	Other	N/A	N/A	N/A	N/A	100.0%	N/A
Average offer rate	Asian	63.5%	56.4%	53.8%	50.7%	57.0%	66.7%
	Black	63.7%	68.1%	51.9%	60.4%	68.6%	68.9%
	Mixed	80.8%	75.8%	67.0%	85.0%	83.3%	80.5%
	White	72.3%	74.2%	71.6%	72.2%	72.6%	73.8%
	Other	N/A	N/A	N/A	N/A	94.6%	N/A
Percentage point difference between offer rate and average offer rate	Asian	N/A	N/A	-9.4	-9.3	N/A	-6.4
	Black	N/A	N/A	-3.6	-3.7	N/A	-0.9
	Mixed	N/A	N/A	N/A	N/A	N/A	N/A
	White	0.2	0.2	0.5	0.8	0.2	0.5
	Other	N/A	N/A	N/A	N/A	N/A	N/A
Contribution of group to the average offer rate	Asian	0.406	0.303	0.236	0.333	0.300	0.316
	Black	0.424	0.234	0.288	0.317	0.338	0.335
	Mixed	0.344	0.257	0.327	0.351	0.458	0.342
	White	0.950	0.930	0.908	0.912	0.931	0.922
	Other	N/A	N/A	N/A	N/A	0.475	N/A

P.13 18 year old offer rate by ethnic group

Note: The line for a group is not plotted when that group made fewer than 10 applications in any of the years from 2012-2017.

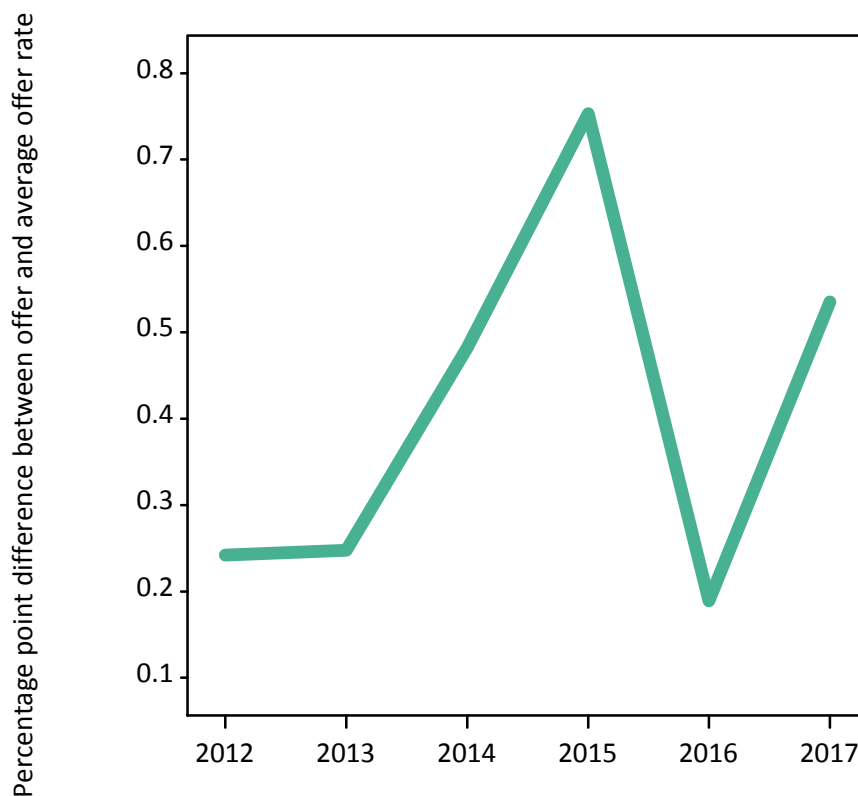
- Asian
- Black
- Mixed
- White
- Other



P.14 Percentage point difference between 18 year old offer rate and average offer rate by ethnic group

Note: The line for a group is not plotted when that group made fewer than 50 applications in any of the years from 2012-2017.

- Asian
- Black
- Mixed
- White
- Other



P.15 Applicants (all ages)

Statistic	2012	2013	2014	2015	2016	2017
June deadline applicants	2,850	3,125	3,510	3,415	3,260	3,270
Placed June deadline applicants	935	990	935	1,045	1,100	1,025
All placed applicants	1,370	1,490	1,425	1,560	1,475	1,520

P.16 Applications (all ages)

Statistic	2012	2013	2014	2015	2016	2017
June deadline applications	3,370	3,580	4,005	3,875	3,750	3,660
Offers	1,940	2,090	2,225	2,190	2,250	2,325
Offer rate	57.6%	58.4%	55.6%	56.6%	60.0%	63.6%

P.17 Applicants (all ages) by sex

Statistic	Sex	2012	2013	2014	2015	2016	2017
June deadline applicants	Men	780	880	975	965	925	995
	Women	2,070	2,245	2,535	2,450	2,330	2,280
Placed June deadline applicants	Men	290	305	280	315	310	295
	Women	645	685	655	730	785	730
All placed applicants	Men	445	500	465	485	430	445
	Women	925	990	960	1,075	1,045	1,070

P.18 Applications (all ages) by sex

Statistic	Sex	2012	2013	2014	2015	2016	2017
June deadline applications	Men	890	950	1,070	1,070	1,050	1,095
	Women	2,480	2,630	2,935	2,805	2,705	2,565
Offers	Men	615	645	750	695	705	800
	Women	1,330	1,450	1,475	1,495	1,545	1,525
Offer rate	Men	69.0%	67.7%	70.3%	65.0%	67.1%	73.2%
	Women	53.5%	55.1%	50.3%	53.4%	57.2%	59.5%

P.19 Applicants (all ages) by POLAR3 quintile

Statistic	POLAR3 quintile	2012	2013	2014	2015	2016	2017
June deadline applicants	Quintile 1	720	770	830	830	785	875
	Quintile 2	550	675	730	730	715	675
	Quintile 3	610	635	720	710	675	650
	Quintile 4	570	580	695	650	635	590
	Quintile 5	390	460	525	485	435	465
Placed June deadline applicants	Quintile 1	250	270	260	300	315	315
	Quintile 2	200	205	195	210	245	205
	Quintile 3	195	220	190	225	210	195
	Quintile 4	170	165	160	185	190	170
	Quintile 5	120	125	130	125	135	135
All placed applicants	Quintile 1	375	415	430	440	440	465
	Quintile 2	285	305	290	305	315	305
	Quintile 3	270	310	270	325	275	275
	Quintile 4	245	235	240	285	245	255
	Quintile 5	185	215	185	195	195	205

P.20 Applications (all ages) by POLAR3 quintile

Statistic	POLAR3 quintile	2012	2013	2014	2015	2016	2017
June deadline applications	Quintile 1	870	875	940	960	930	995
	Quintile 2	665	775	835	815	805	745
	Quintile 3	720	740	830	815	770	730
	Quintile 4	645	650	790	725	735	650
	Quintile 5	460	540	600	545	495	510
Offers	Quintile 1	460	525	500	560	575	645
	Quintile 2	400	445	460	430	490	450
	Quintile 3	430	440	500	480	470	475
	Quintile 4	375	385	440	415	425	405
	Quintile 5	270	295	320	290	280	330
Offer rate	Quintile 1	53.2%	60.0%	53.3%	58.7%	62.1%	65.0%
	Quintile 2	60.3%	57.6%	54.8%	52.8%	60.6%	60.6%
	Quintile 3	59.7%	59.2%	60.4%	58.8%	60.8%	64.8%
	Quintile 4	58.1%	59.4%	56.0%	57.6%	58.1%	62.4%
	Quintile 5	58.4%	54.5%	53.5%	53.7%	57.0%	64.4%

P.21 Applicants (all ages) by ethnic group

Statistic	Ethnic group	2012	2013	2014	2015	2016	2017
June deadline applicants	Asian	95	125	160	160	150	160
	Black	225	235	290	320	330	290
	Mixed	75	100	105	100	105	95
	White	2,420	2,635	2,920	2,790	2,625	2,680
	Other	15	20	25	25	35	25
Placed June deadline applicants	Asian	15	20	20	20	25	30
	Black	55	35	50	45	60	65
	Mixed	30	30	25	30	30	20
	White	830	895	830	945	970	900
	Other	5	5	5	5	10	5
All placed applicants	Asian	20	30	40	40	30	50
	Black	100	85	95	90	90	105
	Mixed	45	50	45	50	50	35
	White	1,175	1,290	1,225	1,350	1,260	1,295
	Other	5	15	15	15	15	10

P.22 Applications (all ages) by ethnic group

Statistic	Ethnic group	2012	2013	2014	2015	2016	2017
June deadline applications	Asian	110	135	180	170	160	170
	Black	260	270	315	340	360	325
	Mixed	100	110	125	110	115	100
	White	2,865	3,025	3,350	3,200	3,060	3,010
	Other	20	20	25	25	40	30
Offers	Asian	45	60	70	50	65	85
	Black	95	85	120	105	125	130
	Mixed	60	70	70	65	70	55
	White	1,725	1,860	1,950	1,945	1,955	2,030
	Other	5	10	15	10	20	15
Offer rate	Asian	41.7%	43.8%	40.4%	29.2%	42.1%	50.9%
	Black	36.8%	31.6%	37.2%	31.2%	34.4%	39.8%
	Mixed	63.3%	61.3%	54.8%	60.9%	59.8%	57.6%
	White	60.3%	61.5%	58.2%	60.8%	64.0%	67.5%
	Other	33.3%	45.0%	56.0%	44.4%	55.3%	55.2%

Technical Notes and Definitions

UCAS undergraduate scheme

Adjustment

Adjustment allows applicants who have met and exceeded the terms of their conditional firm offer to seek and find a place at another provider whilst keeping their place at their original firm choice provider.

Clearing

Clearing is a route for applicants that are not placed and holding no offers to find a place on courses with vacancies.

Cycle year

The UCAS application cycle which runs from September to October the following year. For example the 2017 cycle runs from September 2016 through to October 2017.

End of cycle

The point in the cycle to which the numbers in this report refer, and the point at which the cycle is closed such that no more applications or offers can be made, and no more applicants can be placed. Numbers reported at the end of cycle exclude information on a small number of applicants who cancelled during the cycle.

Extra

Applicants who are unsuccessful in obtaining an offer or decline all offers may be eligible to apply through Extra, where they can apply to one further course at a time. Extra operates from 25 February until early July. It provides applicants who are eligible the possibility of obtaining an offer before exam results are published and Clearing starts.

June 30 deadline

The deadline for main scheme applications. Applicants who apply after this date will go directly into Clearing.

Record of Prior Acceptance (RPA)

RPA is an acceptance route used when a provider informs UCAS of applicants it has accepted outside of the normal application process (e.g. individuals who have applied directly to the provider).

Reporting groups

Ethnic group

High level grouping of ethnic origin as declared by the applicant: 'White', 'Black', 'Asian', 'Mixed', 'Other', 'Unknown'. Applicants who declare themselves as 'Unknown' ethnic origin are not reported in these tables, but are included in the associated csv data file.

POLAR3 quintile

Developed by HEFCE, POLAR3 classifies small areas across the UK into five groups according to their level of young participation in Higher Education. Each of these groups represents around 20 per cent of young people and is ranked from Quintile 1 (areas with the lowest young participation rates, considered as the most disadvantaged) to Quintile 5 (highest young participation rates, considered most advantaged). POLAR3 is based on the participation rates of young people between 2005 and 2009 who entered Higher Education between 2005-06 and 2010-11, therefore is most suitable for applicants aged 19 and under. These groups are assigned using the postcode declared by the applicant at the time of their application. If a UK postcode is invalid, considered unsafe for measurement or there is no link to Census geography possible then the applicant is not assigned to a quintile. Applicants with no POLAR3 quintile are not reported.

Sex

Sex as declared by the applicant.

SIMD 2016 quintile

Scottish index of multiple deprivation (SIMD) identifies small area concentrations of multiple deprivation across all of Scotland, providing a relative measure of deprivation amongst 6505 small areas (data zones) based on 7 socio-economic domains. These small areas are classified into five groups ranked from Quintile 1 (considered the most deprived) to Quintile 5 (considered least deprived), with equal populations in each quintile. Quintiles are assigned using the postcode declared by the applicant, applicants declaring invalid postcodes are classified as 'Not assigned' and are not reported.

SIMD is only defined for applicants domiciled in Scotland, therefore any applicants domiciled outside of Scotland cannot be assigned to an SIMD quintile and so are not reported for this measure.

SIMD is only reported for providers in Scotland. Application and entry rates by SIMD are reported in the 2017 End of Cycle Report and the 2017 cycle January deadline application rate report.

Statistics reported in the tables

All placed applicants

The number of applicants placed for entry into higher education at the provider through one of their choices, including any choices made through Extra, or via Adjustment, Clearing or RPA.

All placed applicants per 10,000 population

The number of total UK domiciled 18 year old placed applicants for entry into higher education at the provider divided by the number of UK 18 year olds in the population, multiplied by 10,000. This gives the number of 18 year olds, for every 10,000 in the population, that were placed at the provider through one of their choices, including any choices made through Extra, or via Adjustment, Clearing or RPA. It is an alternative way of expressing the entry rate to a provider. By referencing the underlying population this statistic shows how the number of placed applicants is changing in relation to the available pool of potential applicants and so gives the chance that somebody from the group will be placed at a provider.

This statistic is only reported for 18 year olds.

Average offer rate

The offer rate that you might expect if the predicted grades and subject choice of applicants were the only factors that influenced whether an applicant was made an offer by the provider. The average offer rate is calculated by dividing applicants according to their specific combination of grades (for A levels the best three predicted grades are used, for BTECs, International Baccalaureate and Scottish Highers and Advanced Highers, predicted grades along with any grades already achieved upon applying are used) and subject choice. For each combination the number of main scheme offers is divided by the number of main scheme applications, to give an overall offer rate. This is then multiplied by the number of applications made by the group for which the average offer rate is being calculated (for example POLAR3 quintile 1), to give an average number of offers for that group. These average number of offers are then added together across all combinations of predicted grade and subject and divided by the number of main scheme applications from the group to give the average offer rate.

The average offer rate does not attempt to control for any other factors that may play a part in the decision to make an offer, such as the subject of the qualifications studied, their relevance to a course, or the grade in each subject; higher numbers of A levels being studied; the exact profile of grades predicted; personal statements; teacher references; interviews; or any other criteria (such as work experience or portfolios) that may be part of the admissions decision.

This statistic is only reported for 18 year olds.

Contribution of group to the average offer rate

The way in which the average offer rate is defined means that the pattern of application and offers of a group (for example POLAR3 quintile 1) will always contribute, in part, to the average offer rate for that group. When this contribution is large, the average offer rate will mainly reflect the patterns for the group, meaning that the value of the average offer rate will be similar to the offer rate, the percentage point difference statistic will be small, and any real difference between the offer rate and what might be expected given the predicted grades and subject choices of the applicants will be difficult to detect.

Values of the contribution of group to the average offer rate range between 0 and 1. The closer the value is to 1 the greater the contribution a group makes to its own average offer rate.

This statistic is only reported for 18 year olds.

Placed June deadline applicants

An applicant who has been placed for entry into higher education at the provider through a June deadline application.

Placed June deadline applicants per 10,000 population

The number of UK domiciled 18 year old placed June deadline applicants at the provider divided by the number of UK 18 year olds in the population, multiplied by 10,000. This gives the number of 18 year olds, for every 10,000 in the population, that were placed at the provider through one of their June deadline applications. It is an alternative way of expressing the entry rate to a provider, but for placed June deadline applicants only. By referencing the underlying population this statistic shows how the number of placed June deadline applicants is changing in relation to the available pool of potential 18 year old applicants and so gives the chance that somebody from the group will be placed at a provider through a June deadline application.

This statistic is only reported for 18 year olds.

June deadline applications

An application (or choice) to a course in higher education to the provider that is made by the June 30 deadline. Each applicant can make up to five choices this way. The number of June deadline applications does not include choices made through the following routes: Clearing, Extra, Adjustment and RPAs. Applications made to October deadline courses received after the October deadline are not included in these statistics.

June deadline applicants

The number of applicants that made at least one application to the provider by the June 30 deadline.

June deadline applicants per 10,000 population

The number of UK domiciled 18 year old June deadline applicants to the provider divided by the number of UK 18 year olds in the population, multiplied by 10,000. This gives the number of 18 year olds, for every 10,000 in the population, who applied by the June 30 deadline. It is equivalent to the application rate. By referencing the underlying population this statistic shows how the number of June deadline applicants is changing in relation to the available pool of potential 18 year old applicants and so gives the chance that somebody from the group will apply to a provider by the June 30 deadline.

This statistic is only reported for 18 year olds.

Offers

An offer is defined as a provider's decision in response to an application to offer a place to an applicant, often subject to the applicant satisfying academic and/or other criteria, via a June deadline application (i.e. does not cover choices made through the following routes: Clearing, Extra, Adjustment and RPAs).

Offer rate

The number of offers made divided by the number of June deadline applications. This gives the proportion of all June deadline applications to the provider that received an offer.

Percentage point difference between offer rate and average offer rate

The offer rate minus the average offer rate.

The percentage point difference can be compared to the expected range of statistical variation resulting from the calculation of the average offer rate using the Average Offer Rate Lookup Table. Where the value of the percentage point difference lies outside of this range, the percentage point difference may be considered to represent a real difference between the offer rate and the average offer rate.

Other definitions

Age

This analysis uses country-specific age definitions that align with the cut off points for school and college cohorts within the different administrations of the UK. For England and Wales, ages are defined on the 31 August, for Northern Ireland on the 1 July and for Scotland on the 28 February the following year. Defining ages in this way matches the assignment of children to school cohorts. For applicants outside of the UK a cohort cut off of 31 August has been used. Numbers for applicants aged 17 and under are included in the tables that report numbers for all age groups. Providers in Scotland typically receive a higher proportion of applicants aged 17 and under compared to providers elsewhere in the UK.

Provider

A higher education provider - a university or college.

UK domiciled

Declared area of permanent residence within England, Northern Ireland, Scotland and Wales. Applicants from the Channel Islands and Isle of Man are not included.