

S27 University of Southampton

Cycle years: 2012 - 2017

Cycle Reference Point: End of Cycle

Applicant coverage: UK domiciled

Reporting groups: Sex, POLAR3, ethnic group

Applicant statistics: June deadline applicants, placed June deadline applicants, all placed applicants, June deadline applicants per 10,000 population, placed June deadline applicants per 10,000 population, all placed applicants per 10,000 population

Application statistics: June deadline applications, offers, offer rate, average offer rate, percentage point difference between offer rate and average offer rate, contribution of group to the average offer rate

Non-disclosure controls: To avoid the disclosure of information about any individual the following measures are taken

- Applicants, placed applicants, applications and offers are rounded to the nearest 5.
- Applicants/placed applicants per 10,000 population figures are reported as 0 if the applicant/placed applicant figures are rounded to 0.
- All statistics related to the offer rate are not reported when the number of applications for a group is less than 10. The percentage point difference between the offer rate and the average offer rate is not reported when the number of applications for a group is less than 50.
- Offer rates are reported as 0% if there are fewer than 5 offers, and 100% if the number of offers is within 5 of the number of applications. When the offer rate is reported as 0% or 100%, it is reported in italics.

Contents:

- 18 year old applicants: P.1
- 18 year old applications: P.2
- 18 year old applicants by sex: P.3
- 18 year old applications by sex: P.4
- 18 year old applicants by POLAR3 quintile: P.7
- 18 year old applications by POLAR3 quintile: P.8
- 18 year old applicants by ethnic group: P.11
- 18 year old applications by ethnic group: P.12
- Applicants (all ages): P.15
- Applications (all ages): P.16
- Applicants (all ages) by sex: P.17
- Applications (all ages) by sex: P.18
- Applicants (all ages) by POLAR3 quintile: P.19
- Applications (all ages) by POLAR3 quintile: P.20
- Applicants (all ages) by ethnic group: P.21
- Applications (all ages) by ethnic group: P.22

P.1 18 year old applicants

Statistic	2012	2013	2014	2015	2016	2017
June deadline applicants	16,450	17,300	16,815	17,430	21,350	20,595
Placed June deadline applicants	2,300	2,720	2,475	3,055	2,670	2,485
All placed applicants	2,475	2,970	2,815	3,610	2,945	2,825
June deadline applicants per 10,000 population	212.7	227.3	223.2	227.5	284.8	278.0
Placed June deadline applicants per 10,000	29.7	35.7	32.8	39.9	35.6	33.5
All placed applicants per 10,000 population	32.0	39.0	37.3	47.1	39.3	38.1

P.2 18 year old applications

Statistic	2012	2013	2014	2015	2016	2017
June deadline applications	16,915	17,715	17,210	17,855	21,820	21,080
Offers	12,460	13,760	13,855	15,000	17,945	16,555
Offer rate	73.7%	77.7%	80.5%	84.0%	82.2%	78.5%

P.3 18 year old applicants by sex

Statistic	Sex	2012	2013	2014	2015	2016	2017
June deadline applicants	Men	7,925	8,390	7,995	8,545	10,405	10,205
	Women	8,525	8,910	8,820	8,890	10,945	10,390
Placed June deadline applicants	Men	1,120	1,325	1,210	1,485	1,270	1,240
	Women	1,180	1,395	1,260	1,570	1,395	1,245
All placed applicants	Men	1,180	1,450	1,395	1,780	1,400	1,420
	Women	1,295	1,520	1,420	1,830	1,545	1,405
June deadline applicants per 10,000 population	Men	199.8	214.9	206.5	217.7	270.8	268.7
	Women	226.2	240.4	240.9	237.8	299.5	287.7
Placed June deadline applicants per 10,000 population	Men	28.2	33.9	31.3	37.9	33.1	32.6
	Women	31.3	37.6	34.5	42.0	38.2	34.4
All placed applicants per 10,000 population	Men	29.7	37.2	36.0	45.3	36.4	37.4
	Women	34.3	41.0	38.7	49.0	42.3	38.9

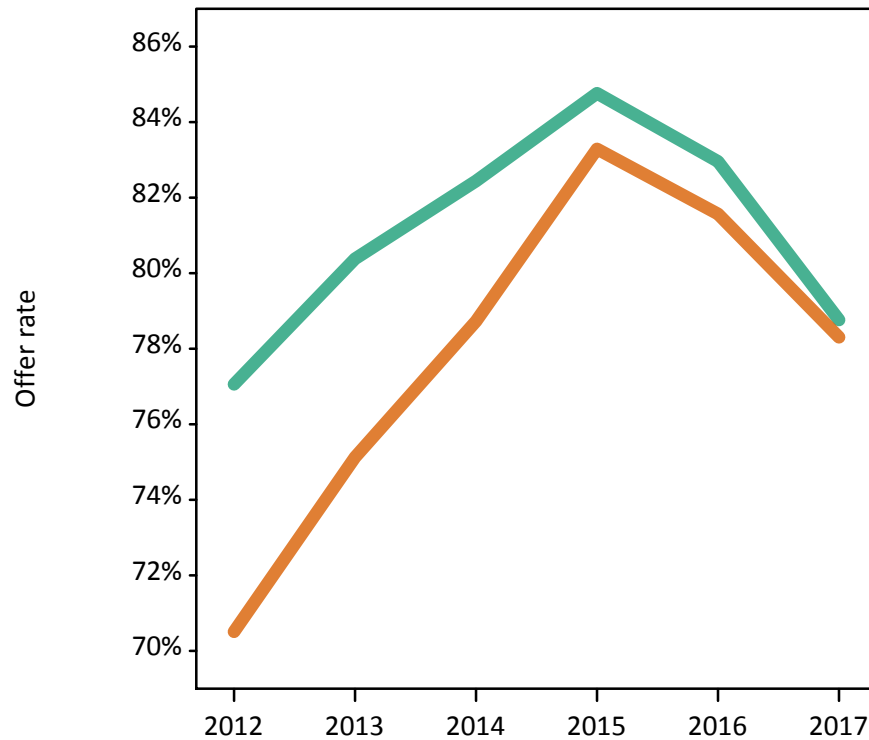
P.4 18 year old applications by sex

Statistic	Sex	2012	2013	2014	2015	2016	2017
June deadline applications	Men	8,170	8,615	8,210	8,760	10,650	10,470
	Women	8,750	9,100	9,000	9,095	11,170	10,610
Offers	Men	6,295	6,925	6,770	7,425	8,835	8,245
	Women	6,170	6,835	7,085	7,575	9,110	8,310
Offer rate	Men	77.1%	80.4%	82.4%	84.8%	83.0%	78.8%
	Women	70.5%	75.1%	78.7%	83.3%	81.6%	78.3%
Average offer rate	Men	77.0%	80.6%	82.3%	85.1%	83.2%	79.4%
	Women	70.5%	74.9%	78.8%	83.0%	81.3%	77.7%
Percentage point difference between offer rate and average offer rate	Men	0.0	-0.3	0.1	-0.3	-0.3	-0.7
	Women	-0.0	0.2	-0.1	0.3	0.3	0.6
Contribution of group to the average offer rate	Men	0.625	0.628	0.631	0.641	0.629	0.644
	Women	0.650	0.648	0.663	0.655	0.646	0.648

P.5 18 year old offer rate by sex

Note: The line for a group is not plotted when that group made fewer than 10 applications in any of the years from 2012-2017.

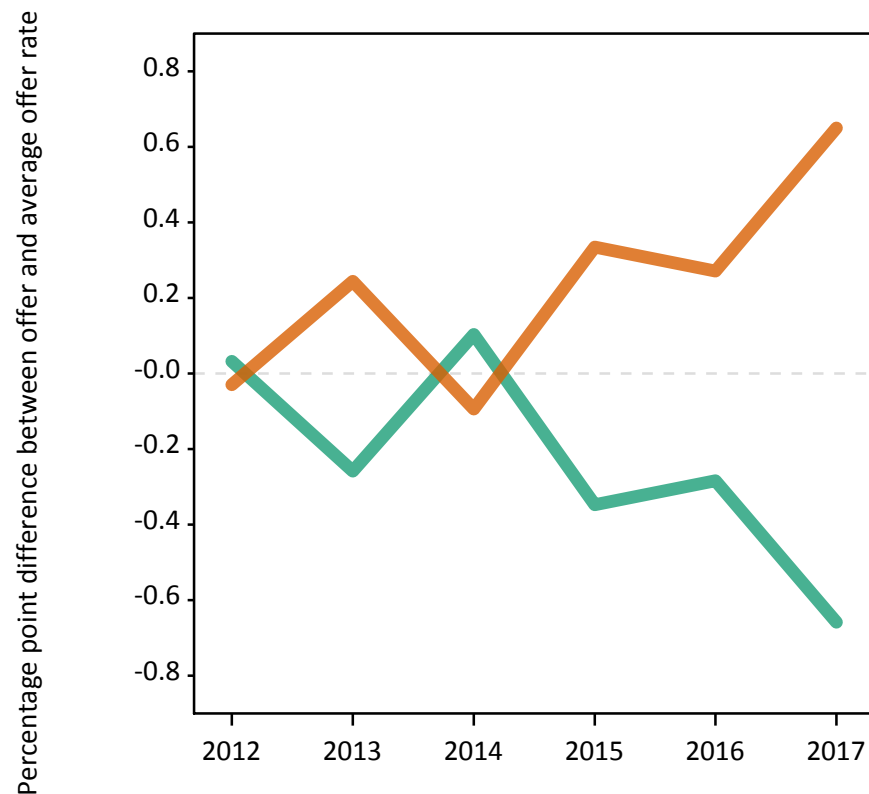
Men
Women



P.6 Percentage point difference between 18 year old offer rate and average offer rate by sex

Note: The line for a group is not plotted when that group made fewer than 50 applications in any of the years from 2012-2017.

Men
Women



P.7 18 year old applicants by POLAR3 quintile

Statistic	POLAR3 quintile	2012	2013	2014	2015	2016	2017
June deadline applicants	Quintile 1	1,025	1,135	1,135	1,215	1,460	1,595
	Quintile 2	1,825	1,915	1,920	1,945	2,495	2,510
	Quintile 3	2,775	3,015	2,880	3,145	3,720	3,795
	Quintile 4	4,225	4,365	4,245	4,370	5,395	5,090
	Quintile 5	6,580	6,840	6,605	6,725	8,235	7,555
Placed June deadline applicants	Quintile 1	160	190	170	240	180	175
	Quintile 2	245	300	280	350	330	315
	Quintile 3	405	440	385	495	455	445
	Quintile 4	580	735	655	795	695	630
	Quintile 5	910	1,050	980	1,170	1,005	915
All placed applicants	Quintile 1	175	205	190	260	190	200
	Quintile 2	265	325	305	400	360	345
	Quintile 3	435	480	450	585	495	505
	Quintile 4	625	800	725	930	755	720
	Quintile 5	970	1,150	1,140	1,420	1,140	1,045
June deadline applicants per 10,000 population	Quintile 1	71.8	81.3	81.6	86.8	108.3	120.0
	Quintile 2	121.8	130.0	131.1	131.0	172.6	176.7
	Quintile 3	179.6	197.6	191.5	204.8	247.5	254.8
	Quintile 4	266.2	279.0	275.5	279.2	349.5	333.4
	Quintile 5	391.7	413.6	405.0	401.8	498.4	459.9
Placed June deadline applicants per 10,000 population	Quintile 1	11.1	13.5	12.3	17.0	13.3	13.1
	Quintile 2	16.2	20.4	19.1	23.7	22.8	22.0
	Quintile 3	26.2	28.7	25.6	32.1	30.3	29.7
	Quintile 4	36.6	46.9	42.6	50.9	45.0	41.3
	Quintile 5	54.3	63.5	60.0	69.8	60.8	55.8
All placed applicants per 10,000 population	Quintile 1	12.2	14.8	13.6	18.6	14.2	14.9
	Quintile 2	17.5	21.9	20.8	27.1	24.8	24.4
	Quintile 3	28.3	31.5	29.8	38.2	33.0	34.0
	Quintile 4	39.4	51.3	47.1	59.5	48.8	47.3
	Quintile 5	57.9	69.5	69.8	84.9	69.0	63.7

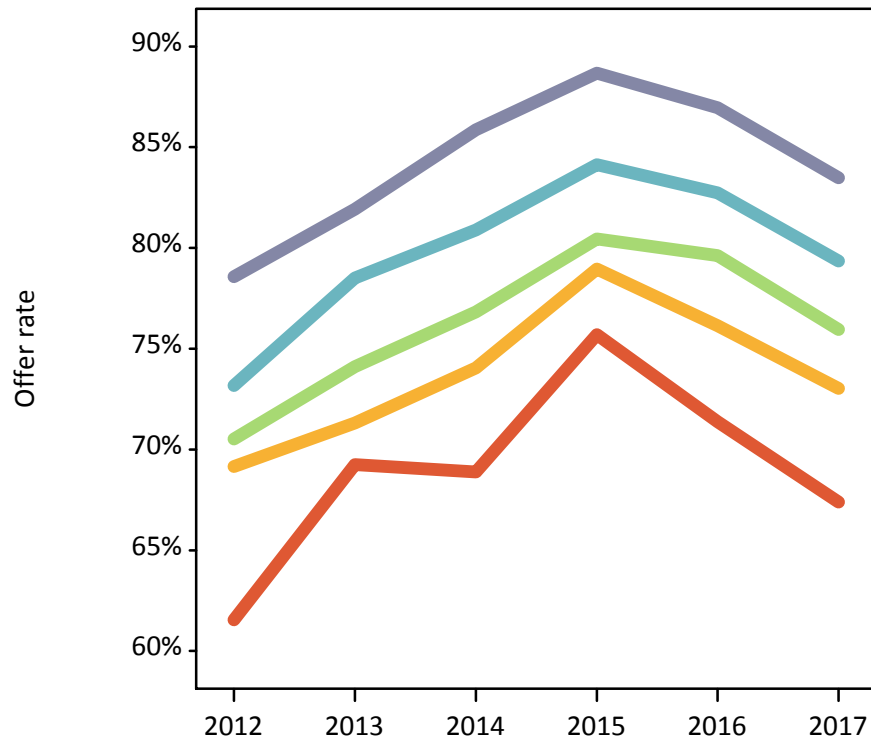
P.8 18 year old applications by POLAR3 quintile

Statistic	POLAR3 quintile	2012	2013	2014	2015	2016	2017
June deadline applications	Quintile 1	1,060	1,185	1,205	1,265	1,515	1,645
	Quintile 2	1,890	1,970	1,975	2,000	2,565	2,570
	Quintile 3	2,860	3,080	2,950	3,230	3,805	3,870
	Quintile 4	4,340	4,465	4,340	4,480	5,510	5,235
	Quintile 5	6,740	6,975	6,715	6,850	8,385	7,710
Offers	Quintile 1	655	820	830	955	1,080	1,110
	Quintile 2	1,305	1,405	1,465	1,580	1,955	1,875
	Quintile 3	2,015	2,280	2,265	2,600	3,030	2,940
	Quintile 4	3,175	3,505	3,510	3,770	4,555	4,155
	Quintile 5	5,295	5,715	5,765	6,075	7,295	6,435
Offer rate	Quintile 1	61.5%	69.3%	68.9%	75.7%	71.4%	67.4%
	Quintile 2	69.2%	71.3%	74.0%	79.0%	76.1%	73.0%
	Quintile 3	70.5%	74.1%	76.8%	80.4%	79.6%	75.9%
	Quintile 4	73.2%	78.5%	80.9%	84.1%	82.7%	79.4%
	Quintile 5	78.6%	81.9%	85.9%	88.7%	87.0%	83.5%
Average offer rate	Quintile 1	62.5%	70.3%	70.0%	75.5%	72.6%	69.0%
	Quintile 2	69.4%	72.6%	75.2%	80.0%	77.5%	73.4%
	Quintile 3	71.1%	74.9%	77.3%	80.8%	80.1%	76.0%
	Quintile 4	73.5%	78.1%	81.6%	84.5%	82.7%	79.5%
	Quintile 5	77.9%	81.3%	84.6%	88.0%	86.2%	82.9%
Percentage point difference between offer rate and average offer rate	Quintile 1	-1.0	-1.0	-1.1	0.1	-1.2	-1.6
	Quintile 2	-0.2	-1.3	-1.2	-1.1	-1.3	-0.4
	Quintile 3	-0.6	-0.8	-0.5	-0.4	-0.5	-0.1
	Quintile 4	-0.3	0.4	-0.7	-0.3	0.1	-0.1
	Quintile 5	0.7	0.7	1.2	0.7	0.8	0.6
Contribution of group to the average offer rate	Quintile 1	0.147	0.151	0.154	0.145	0.148	0.149
	Quintile 2	0.175	0.174	0.183	0.177	0.176	0.180
	Quintile 3	0.223	0.226	0.230	0.236	0.223	0.231
	Quintile 4	0.296	0.294	0.295	0.298	0.288	0.289
	Quintile 5	0.450	0.446	0.442	0.441	0.434	0.420

P.9 18 year old offer rate by POLAR3 quintile

Note: The line for a group is not plotted when that group made fewer than 10 applications in any of the years from 2012-2017.

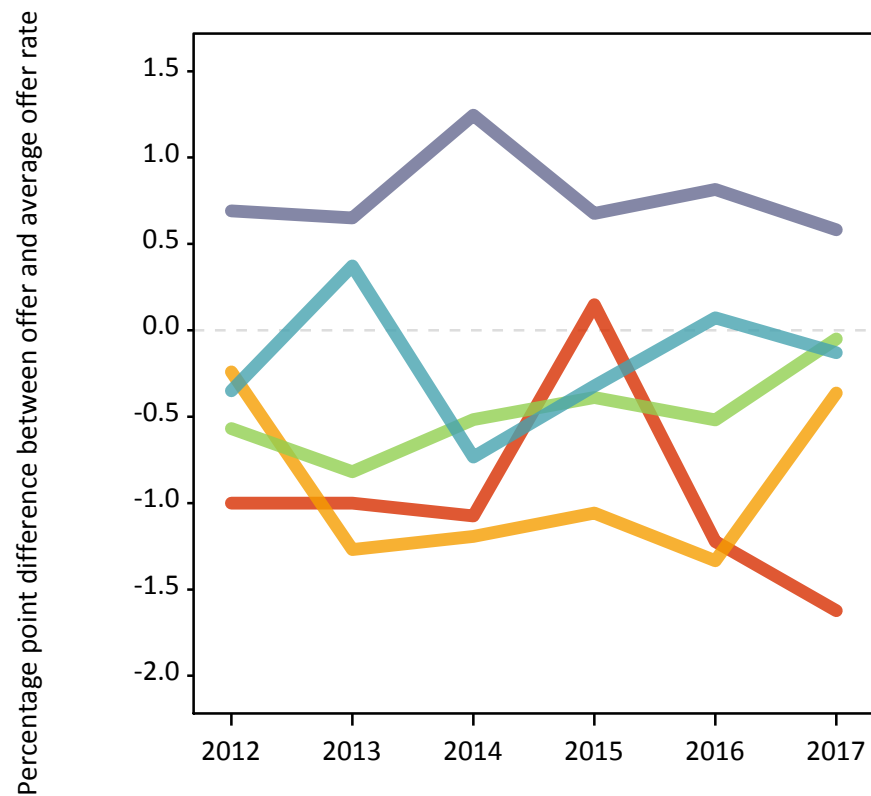
- Quintile 1
- Quintile 2
- Quintile 3
- Quintile 4
- Quintile 5



P.10 Percentage point difference between 18 year old offer rate and average offer rate by POLAR3 quintile

Note: The line for a group is not plotted when that group made fewer than 50 applications in any of the years from 2012-2017.

- Quintile 1
- Quintile 2
- Quintile 3
- Quintile 4
- Quintile 5



P.11 18 year old applicants by ethnic group

Statistic	Ethnic group	2012	2013	2014	2015	2016	2017
June deadline applicants	Asian	1,465	1,685	1,570	1,700	2,145	2,280
	Black	580	830	850	950	1,160	1,195
	Mixed	685	745	730	775	1,110	1,075
	White	13,455	13,780	13,405	13,685	16,500	15,635
	Other	150	170	165	215	280	275
Placed June deadline applicants	Asian	145	195	170	255	200	240
	Black	55	85	90	100	95	95
	Mixed	90	115	105	125	130	110
	White	1,980	2,290	2,080	2,525	2,195	2,010
	Other	10	15	20	35	25	20
All placed applicants	Asian	175	235	240	345	250	300
	Black	70	100	110	140	115	115
	Mixed	95	130	115	165	150	130
	White	2,100	2,475	2,310	2,900	2,380	2,240
	Other	15	20	25	45	30	25
June deadline applicants per 10,000 population	Asian	226.2	255.2	231.4	240.1	298.2	309.9
	Black	205.2	279.2	280.7	298.1	371.2	379.4
	Mixed	263.8	275.2	254.4	251.3	352.1	335.2
	White	208.4	219.0	217.3	219.7	272.8	263.5
	Other	169.5	187.5	176.2	222.0	283.4	265.0
Placed June deadline applicants per 10,000 population	Asian	22.5	29.9	24.8	35.7	27.8	32.3
	Black	19.9	28.0	30.0	32.0	31.0	29.6
	Mixed	34.6	42.9	36.1	40.2	40.7	33.6
	White	30.6	36.4	33.7	40.6	36.3	33.9
	Other	13.6	18.7	19.3	37.3	26.1	18.4
All placed applicants per 10,000 population	Asian	27.2	35.5	35.4	48.6	34.7	40.5
	Black	24.1	34.0	35.6	43.7	36.7	36.5
	Mixed	37.2	47.3	40.0	53.2	47.4	40.2
	White	32.5	39.3	37.4	46.6	39.4	37.7
	Other	14.7	21.0	26.9	45.6	30.1	24.3

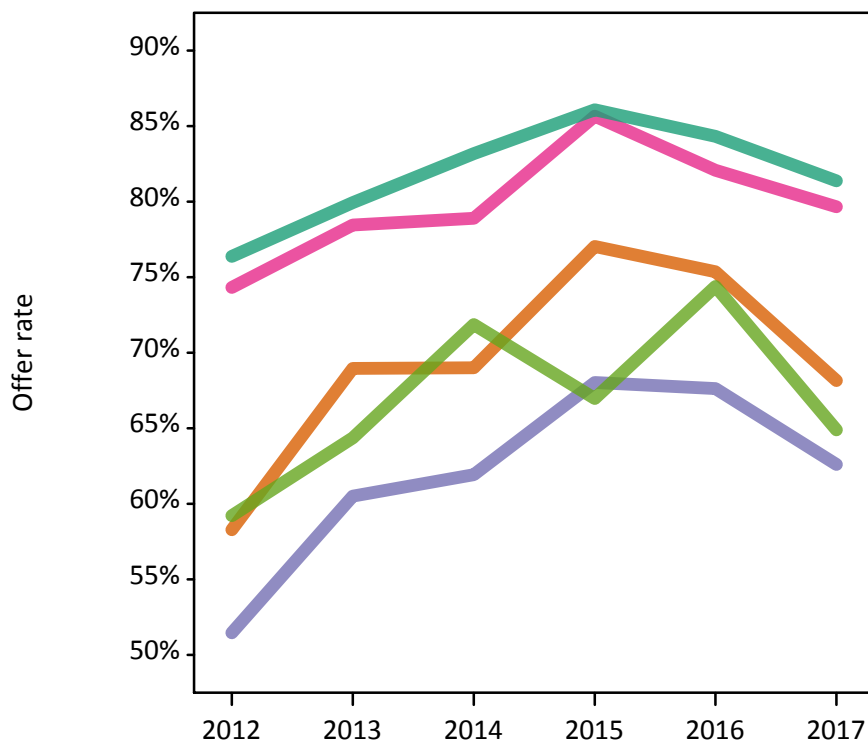
P.12 18 year old applications by ethnic group

Statistic	Ethnic group	2012	2013	2014	2015	2016	2017
June deadline applications	Asian	1,490	1,715	1,595	1,720	2,185	2,315
	Black	580	840	860	955	1,170	1,205
	Mixed	705	760	745	795	1,120	1,105
	White	13,865	14,135	13,750	14,055	16,900	16,030
	Other	150	175	165	220	285	280
Offers	Asian	870	1,180	1,100	1,325	1,650	1,580
	Black	300	505	530	650	790	755
	Mixed	525	595	585	680	920	880
	White	10,590	11,300	11,435	12,100	14,250	13,040
	Other	90	110	120	145	210	185
Offer rate	Asian	58.3%	69.0%	69.0%	77.0%	75.4%	68.2%
	Black	51.5%	60.5%	61.9%	68.0%	67.6%	62.6%
	Mixed	74.3%	78.4%	78.9%	85.6%	82.1%	79.7%
	White	76.4%	79.9%	83.2%	86.1%	84.3%	81.4%
	Other	59.2%	64.4%	71.9%	67.0%	74.4%	64.9%
Average offer rate	Asian	59.2%	70.1%	71.5%	77.8%	75.4%	69.1%
	Black	55.8%	62.5%	64.4%	70.6%	70.6%	65.3%
	Mixed	74.0%	78.4%	81.4%	85.2%	82.1%	79.6%
	White	76.1%	79.7%	82.6%	85.8%	84.1%	81.0%
	Other	59.6%	67.3%	71.7%	72.9%	76.3%	67.0%
Percentage point difference between offer rate and average offer rate	Asian	-0.9	-1.2	-2.5	-0.8	-0.1	-1.0
	Black	-4.4	-2.0	-2.5	-2.5	-2.9	-2.7
	Mixed	0.3	0.0	-2.5	0.4	0.0	0.1
	White	0.3	0.3	0.6	0.3	0.3	0.4
	Other	-0.4	-2.9	0.1	-5.9	-1.9	-2.1
Contribution of group to the average offer rate	Asian	0.209	0.196	0.202	0.205	0.203	0.216
	Black	0.134	0.165	0.173	0.156	0.143	0.147
	Mixed	0.103	0.107	0.104	0.113	0.106	0.104
	White	0.848	0.829	0.829	0.817	0.804	0.793
	Other	0.054	0.073	0.107	0.083	0.081	0.082

P.13 18 year old offer rate by ethnic group

Note: The line for a group is not plotted when that group made fewer than 10 applications in any of the years from 2012-2017.

- Asian
- Black
- Mixed
- White
- Other



P.14 Percentage point difference between 18 year old offer rate and average offer rate by ethnic group

Note: The line for a group is not plotted when that group made fewer than 50 applications in any of the years from 2012-2017.

- Asian
- Black
- Mixed
- White
- Other



P.15 Applicants (all ages)

Statistic	2012	2013	2014	2015	2016	2017
June deadline applicants	25,920	27,275	27,260	27,445	32,600	30,320
Placed June deadline applicants	3,275	4,005	3,665	4,445	4,020	3,560
All placed applicants	3,595	4,430	4,160	5,195	4,435	4,045

P.16 Applications (all ages)

Statistic	2012	2013	2014	2015	2016	2017
June deadline applications	26,980	28,290	28,260	28,360	33,595	31,290
Offers	15,645	17,705	17,970	19,700	23,210	21,085
Offer rate	58.0%	62.6%	63.6%	69.5%	69.1%	67.4%

P.17 Applicants (all ages) by sex

Statistic	Sex	2012	2013	2014	2015	2016	2017
June deadline applicants	Men	11,720	12,550	12,350	12,990	15,350	14,720
	Women	14,200	14,725	14,915	14,455	17,250	15,600
Placed June deadline applicants	Men	1,475	1,800	1,645	2,065	1,765	1,705
	Women	1,800	2,205	2,020	2,385	2,255	1,855
All placed applicants	Men	1,565	1,995	1,910	2,455	1,965	1,955
	Women	2,030	2,440	2,250	2,745	2,470	2,095

P.18 Applications (all ages) by sex

Statistic	Sex	2012	2013	2014	2015	2016	2017
June deadline applications	Men	12,200	12,995	12,790	13,400	15,795	15,180
	Women	14,785	15,295	15,470	14,960	17,805	16,110
Offers	Men	7,690	8,750	8,545	9,685	11,320	10,435
	Women	7,955	8,955	9,425	10,015	11,890	10,645
Offer rate	Men	63.0%	67.3%	66.8%	72.3%	71.7%	68.7%
	Women	53.8%	58.6%	60.9%	67.0%	66.8%	66.1%

P.19 Applicants (all ages) by POLAR3 quintile

Statistic	POLAR3 quintile	2012	2013	2014	2015	2016	2017
June deadline applicants	Quintile 1	2,215	2,375	2,385	2,505	2,850	2,840
	Quintile 2	3,200	3,410	3,520	3,470	4,175	3,975
	Quintile 3	4,580	5,005	4,970	5,175	5,945	5,665
	Quintile 4	6,490	6,650	6,780	6,760	8,115	7,320
	Quintile 5	9,370	9,765	9,555	9,480	11,440	10,430
Placed June deadline applicants	Quintile 1	300	345	310	405	355	310
	Quintile 2	375	495	445	555	525	460
	Quintile 3	575	690	630	750	715	655
	Quintile 4	825	1,035	940	1,135	1,040	870
	Quintile 5	1,195	1,430	1,330	1,590	1,370	1,255
All placed applicants	Quintile 1	335	385	345	460	380	350
	Quintile 2	420	540	485	630	575	510
	Quintile 3	635	765	720	875	780	740
	Quintile 4	900	1,145	1,050	1,310	1,130	1,000
	Quintile 5	1,295	1,580	1,545	1,905	1,560	1,435

P.20 Applications (all ages) by POLAR3 quintile

Statistic	POLAR3 quintile	2012	2013	2014	2015	2016	2017
June deadline applications	Quintile 1	2,340	2,535	2,560	2,645	2,990	2,980
	Quintile 2	3,360	3,575	3,660	3,600	4,335	4,120
	Quintile 3	4,800	5,215	5,170	5,365	6,150	5,845
	Quintile 4	6,745	6,865	7,025	6,990	8,355	7,575
	Quintile 5	9,670	10,020	9,785	9,700	11,690	10,685
Offers	Quintile 1	1,020	1,205	1,235	1,430	1,610	1,585
	Quintile 2	1,705	1,950	2,000	2,205	2,635	2,495
	Quintile 3	2,540	3,020	3,080	3,505	4,040	3,750
	Quintile 4	4,005	4,455	4,525	4,945	5,880	5,230
	Quintile 5	6,345	7,025	7,105	7,580	9,005	7,970
Offer rate	Quintile 1	43.5%	47.4%	48.1%	54.1%	53.8%	53.1%
	Quintile 2	50.7%	54.6%	54.6%	61.2%	60.7%	60.5%
	Quintile 3	52.9%	57.9%	59.6%	65.3%	65.6%	64.1%
	Quintile 4	59.3%	64.9%	64.4%	70.8%	70.4%	69.1%
	Quintile 5	65.6%	70.1%	72.6%	78.2%	77.0%	74.6%

P.21 Applicants (all ages) by ethnic group

Statistic	Ethnic group	2012	2013	2014	2015	2016	2017
June deadline applicants	Asian	2,780	2,970	2,895	2,945	3,640	3,640
	Black	1,520	1,795	1,900	2,110	2,445	2,270
	Mixed	1,025	1,155	1,195	1,220	1,670	1,590
	White	20,015	20,770	20,715	20,535	24,020	22,055
	Other	340	365	330	420	505	500
Placed June deadline applicants	Asian	220	285	280	380	305	350
	Black	110	135	160	185	165	150
	Mixed	125	170	140	185	200	165
	White	2,770	3,360	3,030	3,610	3,260	2,830
	Other	30	30	30	60	50	40
All placed applicants	Asian	265	345	380	500	385	445
	Black	135	170	190	245	190	185
	Mixed	135	185	160	240	230	195
	White	2,995	3,660	3,365	4,110	3,530	3,145
	Other	35	40	40	70	55	50

P.22 Applications (all ages) by ethnic group

Statistic	Ethnic group	2012	2013	2014	2015	2016	2017
June deadline applications	Asian	2,880	3,035	2,970	2,990	3,730	3,730
	Black	1,585	1,870	1,965	2,175	2,500	2,315
	Mixed	1,065	1,200	1,225	1,265	1,695	1,630
	White	20,860	21,580	21,525	21,285	24,805	22,830
	Other	345	375	335	430	520	515
Offers	Asian	1,200	1,590	1,555	1,880	2,300	2,140
	Black	485	710	790	955	1,160	1,050
	Mixed	640	795	760	920	1,210	1,135
	White	13,055	14,335	14,575	15,580	18,025	16,300
	Other	140	175	170	225	320	285
Offer rate	Asian	41.7%	52.3%	52.3%	62.9%	61.7%	57.4%
	Black	30.5%	37.9%	40.3%	43.9%	46.4%	45.4%
	Mixed	60.2%	66.5%	62.1%	72.8%	71.5%	69.7%
	White	62.6%	66.4%	67.7%	73.2%	72.7%	71.4%
	Other	40.4%	46.4%	50.1%	52.3%	61.8%	55.9%

Technical Notes and Definitions

UCAS undergraduate scheme

Adjustment

Adjustment allows applicants who have met and exceeded the terms of their conditional firm offer to seek and find a place at another provider whilst keeping their place at their original firm choice provider.

Clearing

Clearing is a route for applicants that are not placed and holding no offers to find a place on courses with vacancies.

Cycle year

The UCAS application cycle which runs from September to October the following year. For example the 2017 cycle runs from September 2016 through to October 2017.

End of cycle

The point in the cycle to which the numbers in this report refer, and the point at which the cycle is closed such that no more applications or offers can be made, and no more applicants can be placed. Numbers reported at the end of cycle exclude information on a small number of applicants who cancelled during the cycle.

Extra

Applicants who are unsuccessful in obtaining an offer or decline all offers may be eligible to apply through Extra, where they can apply to one further course at a time. Extra operates from 25 February until early July. It provides applicants who are eligible the possibility of obtaining an offer before exam results are published and Clearing starts.

June 30 deadline

The deadline for main scheme applications. Applicants who apply after this date will go directly into Clearing.

Record of Prior Acceptance (RPA)

RPA is an acceptance route used when a provider informs UCAS of applicants it has accepted outside of the normal application process (e.g. individuals who have applied directly to the provider).

Reporting groups

Ethnic group

High level grouping of ethnic origin as declared by the applicant: 'White', 'Black', 'Asian', 'Mixed', 'Other', 'Unknown'. Applicants who declare themselves as 'Unknown' ethnic origin are not reported in these tables, but are included in the associated csv data file.

POLAR3 quintile

Developed by HEFCE, POLAR3 classifies small areas across the UK into five groups according to their level of young participation in Higher Education. Each of these groups represents around 20 per cent of young people and is ranked from Quintile 1 (areas with the lowest young participation rates, considered as the most disadvantaged) to Quintile 5 (highest young participation rates, considered most advantaged). POLAR3 is based on the participation rates of young people between 2005 and 2009 who entered Higher Education between 2005-06 and 2010-11, therefore is most suitable for applicants aged 19 and under. These groups are assigned using the postcode declared by the applicant at the time of their application. If a UK postcode is invalid, considered unsafe for measurement or there is no link to Census geography possible then the applicant is not assigned to a quintile. Applicants with no POLAR3 quintile are not reported.

Sex

Sex as declared by the applicant.

SIMD 2016 quintile

Scottish index of multiple deprivation (SIMD) identifies small area concentrations of multiple deprivation across all of Scotland, providing a relative measure of deprivation amongst 6505 small areas (data zones) based on 7 socio-economic domains. These small areas are classified into five groups ranked from Quintile 1 (considered the most deprived) to Quintile 5 (considered least deprived), with equal populations in each quintile. Quintiles are assigned using the postcode declared by the applicant, applicants declaring invalid postcodes are classified as 'Not assigned' and are not reported.

SIMD is only defined for applicants domiciled in Scotland, therefore any applicants domiciled outside of Scotland cannot be assigned to an SIMD quintile and so are not reported for this measure.

SIMD is only reported for providers in Scotland. Application and entry rates by SIMD are reported in the 2017 End of Cycle Report and the 2017 cycle January deadline application rate report.

Statistics reported in the tables

All placed applicants

The number of applicants placed for entry into higher education at the provider through one of their choices, including any choices made through Extra, or via Adjustment, Clearing or RPA.

All placed applicants per 10,000 population

The number of total UK domiciled 18 year old placed applicants for entry into higher education at the provider divided by the number of UK 18 year olds in the population, multiplied by 10,000. This gives the number of 18 year olds, for every 10,000 in the population, that were placed at the provider through one of their choices, including any choices made through Extra, or via Adjustment, Clearing or RPA. It is an alternative way of expressing the entry rate to a provider. By referencing the underlying population this statistic shows how the number of placed applicants is changing in relation to the available pool of potential applicants and so gives the chance that somebody from the group will be placed at a provider.

This statistic is only reported for 18 year olds.

Average offer rate

The offer rate that you might expect if the predicted grades and subject choice of applicants were the only factors that influenced whether an applicant was made an offer by the provider. The average offer rate is calculated by dividing applicants according to their specific combination of grades (for A levels the best three predicted grades are used, for BTECs, International Baccalaureate and Scottish Highers and Advanced Highers, predicted grades along with any grades already achieved upon applying are used) and subject choice. For each combination the number of main scheme offers is divided by the number of main scheme applications, to give an overall offer rate. This is then multiplied by the number of applications made by the group for which the average offer rate is being calculated (for example POLAR3 quintile 1), to give an average number of offers for that group. These average number of offers are then added together across all combinations of predicted grade and subject and divided by the number of main scheme applications from the group to give the average offer rate.

The average offer rate does not attempt to control for any other factors that may play a part in the decision to make an offer, such as the subject of the qualifications studied, their relevance to a course, or the grade in each subject; higher numbers of A levels being studied; the exact profile of grades predicted; personal statements; teacher references; interviews; or any other criteria (such as work experience or portfolios) that may be part of the admissions decision.

This statistic is only reported for 18 year olds.

Contribution of group to the average offer rate

The way in which the average offer rate is defined means that the pattern of application and offers of a group (for example POLAR3 quintile 1) will always contribute, in part, to the average offer rate for that group. When this contribution is large, the average offer rate will mainly reflect the patterns for the group, meaning that the value of the average offer rate will be similar to the offer rate, the percentage point difference statistic will be small, and any real difference between the offer rate and what might be expected given the predicted grades and subject choices of the applicants will be difficult to detect.

Values of the contribution of group to the average offer rate range between 0 and 1. The closer the value is to 1 the greater the contribution a group makes to its own average offer rate.

This statistic is only reported for 18 year olds.

Placed June deadline applicants

An applicant who has been placed for entry into higher education at the provider through a June deadline application.

Placed June deadline applicants per 10,000 population

The number of UK domiciled 18 year old placed June deadline applicants at the provider divided by the number of UK 18 year olds in the population, multiplied by 10,000. This gives the number of 18 year olds, for every 10,000 in the population, that were placed at the provider through one of their June deadline applications. It is an alternative way of expressing the entry rate to a provider, but for placed June deadline applicants only. By referencing the underlying population this statistic shows how the number of placed June deadline applicants is changing in relation to the available pool of potential 18 year old applicants and so gives the chance that somebody from the group will be placed at a provider through a June deadline application.

This statistic is only reported for 18 year olds.

June deadline applications

An application (or choice) to a course in higher education to the provider that is made by the June 30 deadline. Each applicant can make up to five choices this way. The number of June deadline applications does not include choices made through the following routes: Clearing, Extra, Adjustment and RPAs. Applications made to October deadline courses received after the October deadline are not included in these statistics.

June deadline applicants

The number of applicants that made at least one application to the provider by the June 30 deadline.

June deadline applicants per 10,000 population

The number of UK domiciled 18 year old June deadline applicants to the provider divided by the number of UK 18 year olds in the population, multiplied by 10,000. This gives the number of 18 year olds, for every 10,000 in the population, who applied by the June 30 deadline. It is equivalent to the application rate. By referencing the underlying population this statistic shows how the number of June deadline applicants is changing in relation to the available pool of potential 18 year old applicants and so gives the chance that somebody from the group will apply to a provider by the June 30 deadline.

This statistic is only reported for 18 year olds.

Offers

An offer is defined as a provider's decision in response to an application to offer a place to an applicant, often subject to the applicant satisfying academic and/or other criteria, via a June deadline application (i.e. does not cover choices made through the following routes: Clearing, Extra, Adjustment and RPAs).

Offer rate

The number of offers made divided by the number of June deadline applications. This gives the proportion of all June deadline applications to the provider that received an offer.

Percentage point difference between offer rate and average offer rate

The offer rate minus the average offer rate.

The percentage point difference can be compared to the expected range of statistical variation resulting from the calculation of the average offer rate using the Average Offer Rate Lookup Table. Where the value of the percentage point difference lies outside of this range, the percentage point difference may be considered to represent a real difference between the offer rate and the average offer rate.

Other definitions

Age

This analysis uses country-specific age definitions that align with the cut off points for school and college cohorts within the different administrations of the UK. For England and Wales, ages are defined on the 31 August, for Northern Ireland on the 1 July and for Scotland on the 28 February the following year. Defining ages in this way matches the assignment of children to school cohorts. For applicants outside of the UK a cohort cut off of 31 August has been used. Numbers for applicants aged 17 and under are included in the tables that report numbers for all age groups. Providers in Scotland typically receive a higher proportion of applicants aged 17 and under compared to providers elsewhere in the UK.

Provider

A higher education provider - a university or college.

UK domiciled

Declared area of permanent residence within England, Northern Ireland, Scotland and Wales. Applicants from the Channel Islands and Isle of Man are not included.