

S03 The University of Salford

Cycle years: 2012 - 2017

Cycle Reference Point: End of Cycle

Applicant coverage: UK domiciled

Reporting groups: Sex, POLAR3, ethnic group

Applicant statistics: June deadline applicants, placed June deadline applicants, all placed applicants, June deadline applicants per 10,000 population, placed June deadline applicants per 10,000 population, all placed applicants per 10,000 population

Application statistics: June deadline applications, offers, offer rate, average offer rate, percentage point difference between offer rate and average offer rate, contribution of group to the average offer rate

Non-disclosure controls: To avoid the disclosure of information about any individual the following measures are taken

- Applicants, placed applicants, applications and offers are rounded to the nearest 5.
- Applicants/placed applicants per 10,000 population figures are reported as 0 if the applicant/placed applicant figures are rounded to 0.
- All statistics related to the offer rate are not reported when the number of applications for a group is less than 10. The percentage point difference between the offer rate and the average offer rate is not reported when the number of applications for a group is less than 50.
- Offer rates are reported as 0% if there are fewer than 5 offers, and 100% if the number of offers is within 5 of the number of applications. When the offer rate is reported as 0% or 100%, it is reported in italics.

Contents:

18 year old applicants:	P.1
18 year old applications:	P.2
18 year old applicants by sex:	P.3
18 year old applications by sex:	P.4
18 year old applicants by POLAR3 quintile:	P.7
18 year old applications by POLAR3 quintile:	P.8
18 year old applicants by ethnic group:	P.11
18 year old applications by ethnic group:	P.12
Applicants (all ages):	P.15
Applications (all ages):	P.16
Applicants (all ages) by sex:	P.17
Applications (all ages) by sex:	P.18
Applicants (all ages) by POLAR3 quintile:	P.19
Applications (all ages) by POLAR3 quintile:	P.20
Applicants (all ages) by ethnic group:	P.21
Applications (all ages) by ethnic group:	P.22

P.1 18 year old applicants

Statistic	2012	2013	2014	2015	2016	2017
June deadline applicants	6,890	6,620	8,010	9,500	9,720	10,110
Placed June deadline applicants	1,120	1,210	1,375	1,770	1,835	2,135
All placed applicants	1,365	1,525	1,785	2,160	2,200	2,620
June deadline applicants per 10,000 population	89.1	87.0	106.3	124.0	129.7	136.5
Placed June deadline applicants per 10,000	14.5	15.9	18.3	23.1	24.5	28.8
All placed applicants per 10,000 population	17.7	20.0	23.7	28.2	29.4	35.3

P.2 18 year old applications

Statistic	2012	2013	2014	2015	2016	2017
June deadline applications	7,405	7,130	8,580	10,185	10,445	10,990
Offers	5,400	5,220	6,100	7,580	7,775	8,735
Offer rate	72.9%	73.2%	71.1%	74.4%	74.4%	79.5%

P.3 18 year old applicants by sex

Statistic	Sex	2012	2013	2014	2015	2016	2017
June deadline applicants	Men	3,085	3,070	3,665	4,145	4,350	4,430
	Women	3,805	3,550	4,340	5,355	5,365	5,685
Placed June deadline applicants	Men	550	595	635	760	860	980
	Women	570	615	740	1,010	975	1,155
All placed applicants	Men	670	745	830	945	1,025	1,200
	Women	700	780	950	1,215	1,175	1,420
June deadline applicants per 10,000 population	Men	77.8	78.6	94.7	105.6	113.3	116.6
	Women	100.9	95.8	118.6	143.3	146.9	157.4
Placed June deadline applicants per 10,000 population	Men	13.9	15.3	16.4	19.4	22.4	25.7
	Women	15.1	16.5	20.2	27.0	26.7	32.0
All placed applicants per 10,000 population	Men	16.9	19.1	21.5	24.1	26.7	31.6
	Women	18.5	21.0	26.0	32.6	32.1	39.3

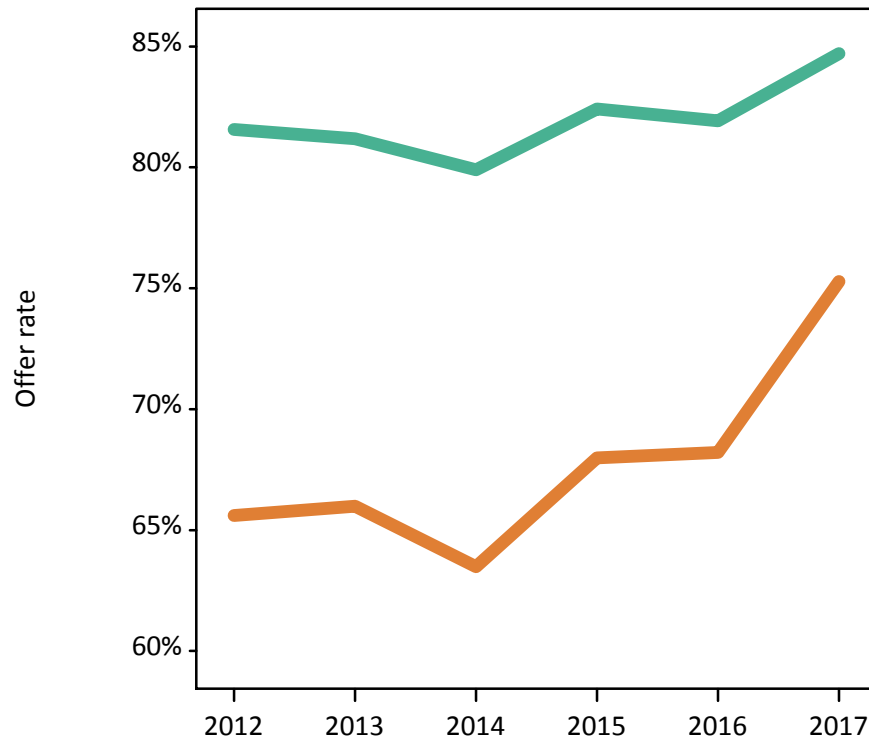
P.4 18 year old applications by sex

Statistic	Sex	2012	2013	2014	2015	2016	2017
June deadline applications	Men	3,380	3,380	3,990	4,540	4,750	4,905
	Women	4,025	3,750	4,590	5,645	5,695	6,085
Offers	Men	2,755	2,745	3,190	3,740	3,890	4,155
	Women	2,640	2,475	2,915	3,840	3,885	4,580
Offer rate	Men	81.6%	81.2%	79.9%	82.4%	81.9%	84.7%
	Women	65.6%	66.0%	63.5%	68.0%	68.2%	75.3%
Average offer rate	Men	81.1%	80.3%	79.4%	81.8%	81.4%	85.2%
	Women	66.0%	66.8%	63.9%	68.4%	68.6%	74.9%
Percentage point difference between offer rate and average offer rate	Men	0.4	0.9	0.5	0.6	0.5	-0.5
	Women	-0.4	-0.8	-0.4	-0.5	-0.4	0.4
Contribution of group to the average offer rate	Men	0.660	0.697	0.677	0.662	0.656	0.646
	Women	0.715	0.727	0.719	0.729	0.713	0.714

P.5 18 year old offer rate by sex

Note: The line for a group is not plotted when that group made fewer than 10 applications in any of the years from 2012-2017.

Men
Women



P.6 Percentage point difference between 18 year old offer rate and average offer rate by sex

Note: The line for a group is not plotted when that group made fewer than 50 applications in any of the years from 2012-2017.

Men
Women



P.7 18 year old applicants by POLAR3 quintile

Statistic	POLAR3 quintile	2012	2013	2014	2015	2016	2017
June deadline applicants	Quintile 1	1,190	1,100	1,470	1,705	1,750	1,810
	Quintile 2	1,425	1,430	1,725	1,945	2,105	2,090
	Quintile 3	1,540	1,495	1,820	2,220	2,240	2,395
	Quintile 4	1,430	1,400	1,585	1,930	1,945	2,015
	Quintile 5	1,300	1,190	1,395	1,685	1,665	1,785
Placed June deadline applicants	Quintile 1	230	225	265	355	325	395
	Quintile 2	225	290	320	350	405	410
	Quintile 3	245	260	300	400	425	515
	Quintile 4	220	250	280	365	365	420
	Quintile 5	195	185	215	305	315	390
All placed applicants	Quintile 1	280	275	335	430	390	475
	Quintile 2	275	345	380	430	495	510
	Quintile 3	300	350	420	510	510	630
	Quintile 4	270	325	370	430	435	530
	Quintile 5	245	230	275	365	370	475
June deadline applicants per 10,000 population	Quintile 1	83.4	78.9	105.6	121.8	129.6	136.1
	Quintile 2	95.1	97.1	117.8	131.0	145.6	147.2
	Quintile 3	99.8	97.9	121.1	144.7	149.1	160.8
	Quintile 4	90.0	89.5	102.8	123.2	126.1	131.9
	Quintile 5	77.3	71.9	85.5	100.7	100.7	108.7
Placed June deadline applicants per 10,000 population	Quintile 1	16.2	16.2	18.9	25.3	23.9	29.9
	Quintile 2	15.1	19.5	21.7	23.4	28.1	28.8
	Quintile 3	16.0	17.0	19.8	26.0	28.4	34.5
	Quintile 4	13.9	16.1	18.2	23.2	23.6	27.6
	Quintile 5	11.6	11.1	13.1	18.1	19.0	23.7
All placed applicants per 10,000 population	Quintile 1	19.5	19.7	24.0	30.6	29.0	35.8
	Quintile 2	18.4	23.3	26.1	28.9	34.1	36.0
	Quintile 3	19.4	23.1	28.0	33.2	34.0	42.2
	Quintile 4	16.9	20.7	23.9	27.4	28.1	34.7
	Quintile 5	14.5	13.9	16.7	21.7	22.3	28.8

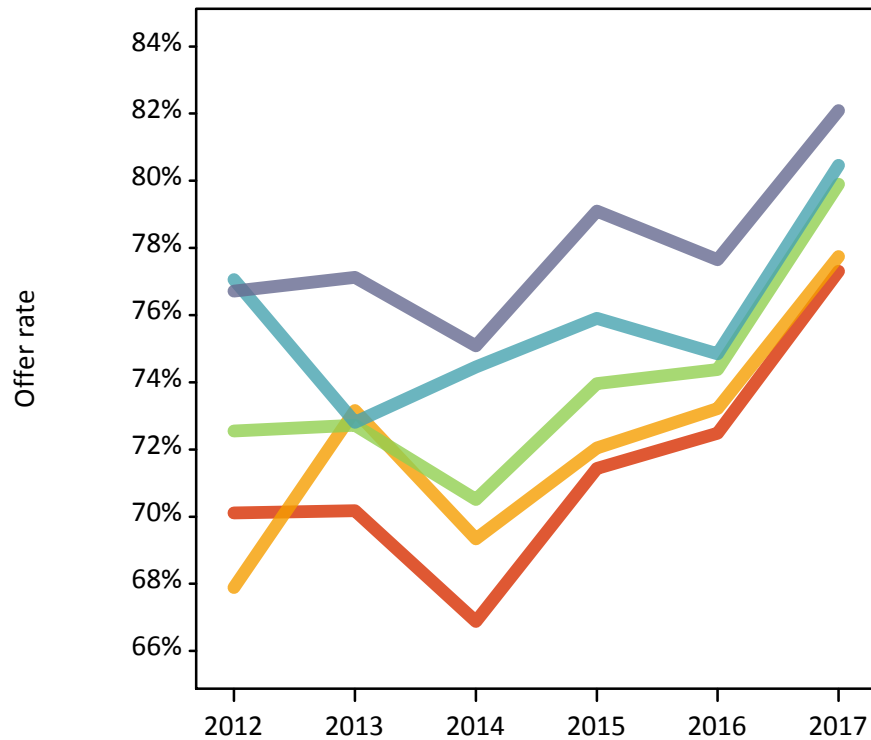
P.8 18 year old applications by POLAR3 quintile

Statistic	POLAR3 quintile	2012	2013	2014	2015	2016	2017
June deadline applications	Quintile 1	1,300	1,235	1,580	1,850	1,890	1,970
	Quintile 2	1,530	1,545	1,835	2,075	2,280	2,270
	Quintile 3	1,660	1,590	1,965	2,410	2,415	2,630
	Quintile 4	1,520	1,510	1,700	2,055	2,075	2,170
	Quintile 5	1,385	1,245	1,480	1,780	1,770	1,930
Offers	Quintile 1	910	865	1,060	1,325	1,370	1,525
	Quintile 2	1,040	1,130	1,270	1,495	1,670	1,765
	Quintile 3	1,205	1,155	1,385	1,785	1,795	2,100
	Quintile 4	1,170	1,100	1,265	1,560	1,555	1,745
	Quintile 5	1,065	960	1,110	1,410	1,375	1,585
Offer rate	Quintile 1	70.1%	70.2%	66.9%	71.4%	72.5%	77.3%
	Quintile 2	67.9%	73.2%	69.3%	72.0%	73.2%	77.7%
	Quintile 3	72.5%	72.7%	70.5%	74.0%	74.4%	79.9%
	Quintile 4	77.1%	72.8%	74.5%	75.9%	74.8%	80.5%
	Quintile 5	76.7%	77.1%	75.1%	79.1%	77.7%	82.1%
Average offer rate	Quintile 1	71.3%	71.8%	69.0%	73.0%	73.3%	78.6%
	Quintile 2	69.2%	72.5%	69.0%	72.8%	72.8%	78.3%
	Quintile 3	72.8%	72.2%	71.2%	74.2%	75.3%	79.7%
	Quintile 4	75.3%	73.2%	72.3%	75.8%	75.1%	79.8%
	Quintile 5	75.7%	76.5%	74.9%	76.5%	75.8%	81.1%
Percentage point difference between offer rate and average offer rate	Quintile 1	-1.2	-1.7	-2.1	-1.5	-0.8	-1.3
	Quintile 2	-1.3	0.7	0.3	-0.7	0.4	-0.6
	Quintile 3	-0.2	0.5	-0.7	-0.2	-1.0	0.1
	Quintile 4	1.7	-0.4	2.2	0.1	-0.2	0.7
	Quintile 5	1.0	0.6	0.2	2.6	1.9	1.0
Contribution of group to the average offer rate	Quintile 1	0.269	0.278	0.272	0.256	0.252	0.250
	Quintile 2	0.296	0.305	0.286	0.269	0.279	0.275
	Quintile 3	0.308	0.319	0.306	0.303	0.292	0.306
	Quintile 4	0.308	0.294	0.279	0.268	0.266	0.266
	Quintile 5	0.294	0.297	0.282	0.276	0.268	0.267

P.9 18 year old offer rate by POLAR3 quintile

Note: The line for a group is not plotted when that group made fewer than 10 applications in any of the years from 2012-2017.

- Quintile 1
- Quintile 2
- Quintile 3
- Quintile 4
- Quintile 5



P.10 Percentage point difference between 18 year old offer rate and average offer rate by POLAR3 quintile

Note: The line for a group is not plotted when that group made fewer than 50 applications in any of the years from 2012-2017.

- Quintile 1
- Quintile 2
- Quintile 3
- Quintile 4
- Quintile 5



P.11 18 year old applicants by ethnic group

Statistic	Ethnic group	2012	2013	2014	2015	2016	2017
June deadline applicants	Asian	920	920	1,225	1,530	1,775	1,795
	Black	220	270	380	440	465	465
	Mixed	215	205	290	340	335	355
	White	5,455	5,145	5,995	7,035	6,955	7,325
	Other	60	65	100	115	130	125
Placed June deadline applicants	Asian	115	120	160	250	285	315
	Black	20	30	55	60	55	70
	Mixed	30	40	50	55	65	65
	White	940	1,005	1,100	1,360	1,405	1,630
	Other	5	10	10	30	15	30
All placed applicants	Asian	170	210	285	375	400	485
	Black	40	50	85	90	70	105
	Mixed	45	55	60	70	80	85
	White	1,100	1,190	1,325	1,570	1,615	1,890
	Other	10	20	25	45	25	40
June deadline applicants per 10,000 population	Asian	141.8	139.3	180.6	216.5	246.4	243.8
	Black	77.8	91.3	126.0	138.2	149.2	148.1
	Mixed	83.3	75.8	100.1	110.9	106.8	110.3
	White	84.5	81.7	97.2	112.9	115.0	123.4
	Other	65.5	69.5	107.4	117.2	128.6	123.3
Placed June deadline applicants per 10,000 population	Asian	17.6	17.9	23.7	35.3	39.7	43.1
	Black	7.8	10.4	17.5	19.5	16.9	22.9
	Mixed	12.3	14.4	16.7	17.5	21.0	20.9
	White	14.6	16.0	17.8	21.9	23.2	27.5
	Other	7.9	12.1	12.9	33.2	16.1	30.1
All placed applicants per 10,000 population	Asian	26.4	31.7	41.9	53.0	55.3	66.1
	Black	14.2	16.2	28.0	28.9	22.0	33.4
	Mixed	16.5	19.6	21.6	22.4	25.7	26.2
	White	17.0	18.9	21.5	25.2	26.7	31.8
	Other	13.6	19.9	24.7	45.6	25.1	36.9

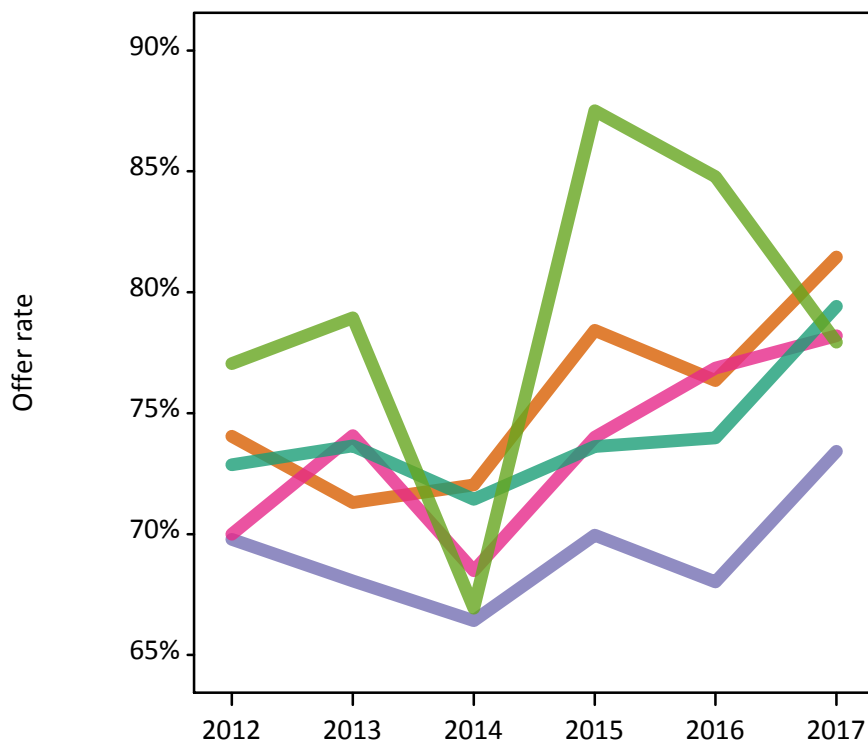
P.12 18 year old applications by ethnic group

Statistic	Ethnic group	2012	2013	2014	2015	2016	2017
June deadline applications	Asian	995	970	1,325	1,650	1,890	1,995
	Black	225	290	400	465	490	495
	Mixed	240	215	310	375	365	400
	White	5,865	5,565	6,405	7,520	7,495	7,905
	Other	60	75	120	130	140	145
Offers	Asian	735	690	955	1,295	1,445	1,625
	Black	155	195	265	325	335	360
	Mixed	170	160	215	280	280	310
	White	4,275	4,095	4,575	5,535	5,545	6,275
	Other	45	60	80	110	115	115
Offer rate	Asian	74.0%	71.3%	72.0%	78.4%	76.3%	81.5%
	Black	69.8%	68.1%	66.4%	70.0%	68.0%	73.4%
	Mixed	70.0%	74.1%	68.5%	74.0%	76.9%	78.2%
	White	72.9%	73.6%	71.4%	73.6%	74.0%	79.4%
	Other	77.0%	78.9%	66.9%	87.5%	84.8%	77.9%
Average offer rate	Asian	75.4%	73.1%	74.7%	78.7%	77.8%	82.7%
	Black	70.6%	71.2%	69.2%	73.3%	71.8%	77.1%
	Mixed	71.4%	76.9%	73.6%	75.8%	76.0%	80.6%
	White	72.5%	73.0%	70.4%	73.3%	73.4%	78.7%
	Other	78.5%	80.1%	71.5%	84.1%	84.4%	80.6%
Percentage point difference between offer rate and average offer rate	Asian	-1.4	-1.8	-2.7	-0.3	-1.5	-1.3
	Black	-0.8	-3.2	-2.8	-3.4	-3.8	-3.6
	Mixed	-1.4	-2.9	-5.1	-1.8	0.9	-2.4
	White	0.4	0.6	1.1	0.3	0.5	0.7
	Other	-1.4	-1.1	-4.6	3.4	0.4	-2.7
Contribution of group to the average offer rate	Asian	0.307	0.330	0.335	0.322	0.326	0.344
	Black	0.143	0.171	0.154	0.129	0.118	0.140
	Mixed	0.123	0.141	0.141	0.131	0.115	0.126
	White	0.833	0.830	0.801	0.789	0.772	0.779
	Other	0.204	0.164	0.143	0.126	0.141	0.103

P.13 18 year old offer rate by ethnic group

Note: The line for a group is not plotted when that group made fewer than 10 applications in any of the years from 2012-2017.

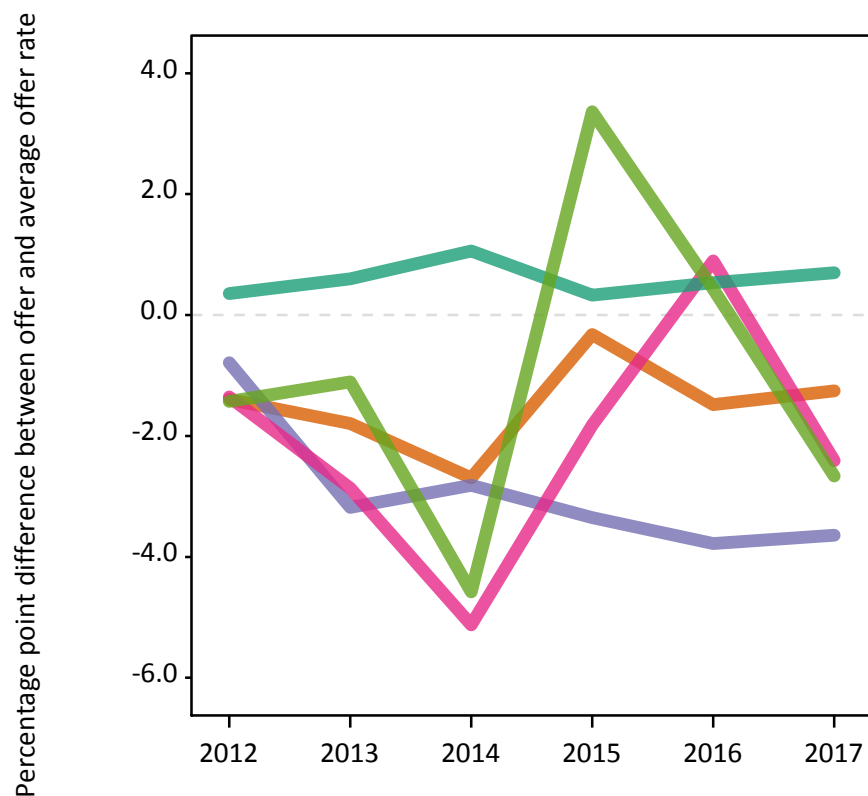
- Asian
- Black
- Mixed
- White
- Other



P.14 Percentage point difference between 18 year old offer rate and average offer rate by ethnic group

Note: The line for a group is not plotted when that group made fewer than 50 applications in any of the years from 2012-2017.

- Asian
- Black
- Mixed
- White
- Other



P.15 Applicants (all ages)

Statistic	2012	2013	2014	2015	2016	2017
June deadline applicants	16,930	16,815	19,305	21,175	21,335	20,430
Placed June deadline applicants	3,085	3,260	3,500	4,015	3,940	4,190
All placed applicants	3,725	4,090	4,460	5,165	4,985	5,480

P.16 Applications (all ages)

Statistic	2012	2013	2014	2015	2016	2017
June deadline applications	18,910	18,660	21,345	23,270	23,650	22,805
Offers	10,780	10,795	11,910	14,285	14,315	15,480
Offer rate	57.0%	57.9%	55.8%	61.4%	60.5%	67.9%

P.17 Applicants (all ages) by sex

Statistic	Sex	2012	2013	2014	2015	2016	2017
June deadline applicants	Men	6,910	7,040	8,120	8,830	8,955	8,795
	Women	10,020	9,775	11,185	12,345	12,380	11,635
Placed June deadline applicants	Men	1,345	1,485	1,515	1,710	1,725	1,885
	Women	1,740	1,770	1,985	2,305	2,215	2,305
All placed applicants	Men	1,650	1,890	1,985	2,300	2,250	2,515
	Women	2,075	2,195	2,475	2,870	2,740	2,965

P.18 Applications (all ages) by sex

Statistic	Sex	2012	2013	2014	2015	2016	2017
June deadline applications	Men	7,845	7,935	9,105	9,925	10,045	10,035
	Women	11,065	10,725	12,235	13,340	13,605	12,775
Offers	Men	5,205	5,420	5,985	7,045	7,000	7,450
	Women	5,570	5,375	5,930	7,245	7,315	8,030
Offer rate	Men	66.4%	68.3%	65.7%	70.9%	69.7%	74.2%
	Women	50.4%	50.1%	48.4%	54.3%	53.8%	62.9%

P.19 Applicants (all ages) by POLAR3 quintile

Statistic	POLAR3 quintile	2012	2013	2014	2015	2016	2017
June deadline applicants	Quintile 1	3,660	3,530	4,150	4,490	4,520	4,330
	Quintile 2	3,695	3,635	4,280	4,515	4,710	4,385
	Quintile 3	3,785	3,830	4,345	4,920	4,910	4,670
	Quintile 4	3,170	3,250	3,545	3,945	3,970	3,860
	Quintile 5	2,575	2,535	2,940	3,270	3,190	3,135
Placed June deadline applicants	Quintile 1	755	745	765	925	815	900
	Quintile 2	665	710	815	855	850	855
	Quintile 3	670	760	800	910	925	1,000
	Quintile 4	555	600	625	760	750	780
	Quintile 5	435	435	485	570	595	650
All placed applicants	Quintile 1	895	915	970	1,180	1,015	1,150
	Quintile 2	815	855	985	1,085	1,075	1,110
	Quintile 3	805	990	1,065	1,215	1,190	1,325
	Quintile 4	650	770	815	970	940	1,045
	Quintile 5	550	550	615	710	755	835

P.20 Applications (all ages) by POLAR3 quintile

Statistic	POLAR3 quintile	2012	2013	2014	2015	2016	2017
June deadline applications	Quintile 1	4,205	4,065	4,690	5,085	5,105	4,935
	Quintile 2	4,110	4,020	4,705	4,965	5,240	4,890
	Quintile 3	4,255	4,245	4,860	5,405	5,445	5,275
	Quintile 4	3,500	3,575	3,885	4,275	4,340	4,235
	Quintile 5	2,785	2,720	3,155	3,500	3,475	3,420
Offers	Quintile 1	2,180	2,110	2,310	2,870	2,845	3,100
	Quintile 2	2,215	2,290	2,575	2,950	3,085	3,215
	Quintile 3	2,410	2,490	2,710	3,335	3,335	3,675
	Quintile 4	2,160	2,140	2,320	2,725	2,730	2,975
	Quintile 5	1,790	1,750	1,975	2,385	2,285	2,480
Offer rate	Quintile 1	51.8%	51.9%	49.2%	56.4%	55.8%	62.8%
	Quintile 2	53.8%	56.9%	54.7%	59.4%	58.8%	65.8%
	Quintile 3	56.6%	58.6%	55.8%	61.7%	61.3%	69.6%
	Quintile 4	61.7%	59.9%	59.7%	63.8%	62.9%	70.3%
	Quintile 5	64.3%	64.3%	62.6%	68.0%	65.8%	72.5%

P.21 Applicants (all ages) by ethnic group

Statistic	Ethnic group	2012	2013	2014	2015	2016	2017
June deadline applicants	Asian	2,185	2,175	2,650	3,205	3,505	3,450
	Black	1,735	1,625	1,835	2,035	2,070	1,930
	Mixed	620	580	680	790	820	795
	White	12,065	12,080	13,720	14,625	14,385	13,680
	Other	230	250	315	360	375	415
Placed June deadline applicants	Asian	315	335	370	535	525	610
	Black	225	200	225	265	215	265
	Mixed	115	115	135	140	165	150
	White	2,375	2,550	2,710	2,980	2,950	3,060
	Other	30	40	45	65	60	70
All placed applicants	Asian	445	535	635	850	820	990
	Black	320	295	345	410	325	405
	Mixed	150	155	185	190	215	200
	White	2,735	3,025	3,195	3,565	3,500	3,745
	Other	55	65	75	105	90	95

P.22 Applications (all ages) by ethnic group

Statistic	Ethnic group	2012	2013	2014	2015	2016	2017
June deadline applications	Asian	2,420	2,375	2,935	3,485	3,855	3,925
	Black	2,025	1,880	2,095	2,295	2,340	2,180
	Mixed	715	655	745	890	915	920
	White	13,360	13,335	15,080	16,000	15,885	15,095
	Other	275	300	365	410	435	500
Offers	Asian	1,485	1,460	1,775	2,425	2,565	2,870
	Black	705	715	765	1,020	970	1,025
	Mixed	390	370	425	575	565	625
	White	7,965	8,010	8,695	9,910	9,810	10,525
	Other	170	180	195	260	275	315
Offer rate	Asian	61.3%	61.5%	60.6%	69.5%	66.5%	73.1%
	Black	34.9%	38.1%	36.5%	44.4%	41.4%	47.0%
	Mixed	54.7%	57.0%	56.8%	64.5%	61.4%	68.0%
	White	59.6%	60.1%	57.7%	62.0%	61.7%	69.7%
	Other	62.1%	60.3%	54.0%	63.3%	63.5%	62.7%

Technical Notes and Definitions

UCAS undergraduate scheme

Adjustment

Adjustment allows applicants who have met and exceeded the terms of their conditional firm offer to seek and find a place at another provider whilst keeping their place at their original firm choice provider.

Clearing

Clearing is a route for applicants that are not placed and holding no offers to find a place on courses with vacancies.

Cycle year

The UCAS application cycle which runs from September to October the following year. For example the 2017 cycle runs from September 2016 through to October 2017.

End of cycle

The point in the cycle to which the numbers in this report refer, and the point at which the cycle is closed such that no more applications or offers can be made, and no more applicants can be placed. Numbers reported at the end of cycle exclude information on a small number of applicants who cancelled during the cycle.

Extra

Applicants who are unsuccessful in obtaining an offer or decline all offers may be eligible to apply through Extra, where they can apply to one further course at a time. Extra operates from 25 February until early July. It provides applicants who are eligible the possibility of obtaining an offer before exam results are published and Clearing starts.

June 30 deadline

The deadline for main scheme applications. Applicants who apply after this date will go directly into Clearing.

Record of Prior Acceptance (RPA)

RPA is an acceptance route used when a provider informs UCAS of applicants it has accepted outside of the normal application process (e.g. individuals who have applied directly to the provider).

Reporting groups

Ethnic group

High level grouping of ethnic origin as declared by the applicant: 'White', 'Black', 'Asian', 'Mixed', 'Other', 'Unknown'. Applicants who declare themselves as 'Unknown' ethnic origin are not reported in these tables, but are included in the associated csv data file.

POLAR3 quintile

Developed by HEFCE, POLAR3 classifies small areas across the UK into five groups according to their level of young participation in Higher Education. Each of these groups represents around 20 per cent of young people and is ranked from Quintile 1 (areas with the lowest young participation rates, considered as the most disadvantaged) to Quintile 5 (highest young participation rates, considered most advantaged). POLAR3 is based on the participation rates of young people between 2005 and 2009 who entered Higher Education between 2005-06 and 2010-11, therefore is most suitable for applicants aged 19 and under. These groups are assigned using the postcode declared by the applicant at the time of their application. If a UK postcode is invalid, considered unsafe for measurement or there is no link to Census geography possible then the applicant is not assigned to a quintile. Applicants with no POLAR3 quintile are not reported.

Sex

Sex as declared by the applicant.

SIMD 2016 quintile

Scottish index of multiple deprivation (SIMD) identifies small area concentrations of multiple deprivation across all of Scotland, providing a relative measure of deprivation amongst 6505 small areas (data zones) based on 7 socio-economic domains. These small areas are classified into five groups ranked from Quintile 1 (considered the most deprived) to Quintile 5 (considered least deprived), with equal populations in each quintile. Quintiles are assigned using the postcode declared by the applicant, applicants declaring invalid postcodes are classified as 'Not assigned' and are not reported.

SIMD is only defined for applicants domiciled in Scotland, therefore any applicants domiciled outside of Scotland cannot be assigned to an SIMD quintile and so are not reported for this measure.

SIMD is only reported for providers in Scotland. Application and entry rates by SIMD are reported in the 2017 End of Cycle Report and the 2017 cycle January deadline application rate report.

Statistics reported in the tables

All placed applicants

The number of applicants placed for entry into higher education at the provider through one of their choices, including any choices made through Extra, or via Adjustment, Clearing or RPA.

All placed applicants per 10,000 population

The number of total UK domiciled 18 year old placed applicants for entry into higher education at the provider divided by the number of UK 18 year olds in the population, multiplied by 10,000. This gives the number of 18 year olds, for every 10,000 in the population, that were placed at the provider through one of their choices, including any choices made through Extra, or via Adjustment, Clearing or RPA. It is an alternative way of expressing the entry rate to a provider. By referencing the underlying population this statistic shows how the number of placed applicants is changing in relation to the available pool of potential applicants and so gives the chance that somebody from the group will be placed at a provider.

This statistic is only reported for 18 year olds.

Average offer rate

The offer rate that you might expect if the predicted grades and subject choice of applicants were the only factors that influenced whether an applicant was made an offer by the provider. The average offer rate is calculated by dividing applicants according to their specific combination of grades (for A levels the best three predicted grades are used, for BTECs, International Baccalaureate and Scottish Highers and Advanced Highers, predicted grades along with any grades already achieved upon applying are used) and subject choice. For each combination the number of main scheme offers is divided by the number of main scheme applications, to give an overall offer rate. This is then multiplied by the number of applications made by the group for which the average offer rate is being calculated (for example POLAR3 quintile 1), to give an average number of offers for that group. These average number of offers are then added together across all combinations of predicted grade and subject and divided by the number of main scheme applications from the group to give the average offer rate.

The average offer rate does not attempt to control for any other factors that may play a part in the decision to make an offer, such as the subject of the qualifications studied, their relevance to a course, or the grade in each subject; higher numbers of A levels being studied; the exact profile of grades predicted; personal statements; teacher references; interviews; or any other criteria (such as work experience or portfolios) that may be part of the admissions decision.

This statistic is only reported for 18 year olds.

Contribution of group to the average offer rate

The way in which the average offer rate is defined means that the pattern of application and offers of a group (for example POLAR3 quintile 1) will always contribute, in part, to the average offer rate for that group. When this contribution is large, the average offer rate will mainly reflect the patterns for the group, meaning that the value of the average offer rate will be similar to the offer rate, the percentage point difference statistic will be small, and any real difference between the offer rate and what might be expected given the predicted grades and subject choices of the applicants will be difficult to detect.

Values of the contribution of group to the average offer rate range between 0 and 1. The closer the value is to 1 the greater the contribution a group makes to its own average offer rate.

This statistic is only reported for 18 year olds.

Placed June deadline applicants

An applicant who has been placed for entry into higher education at the provider through a June deadline application.

Placed June deadline applicants per 10,000 population

The number of UK domiciled 18 year old placed June deadline applicants at the provider divided by the number of UK 18 year olds in the population, multiplied by 10,000. This gives the number of 18 year olds, for every 10,000 in the population, that were placed at the provider through one of their June deadline applications. It is an alternative way of expressing the entry rate to a provider, but for placed June deadline applicants only. By referencing the underlying population this statistic shows how the number of placed June deadline applicants is changing in relation to the available pool of potential 18 year old applicants and so gives the chance that somebody from the group will be placed at a provider through a June deadline application.

This statistic is only reported for 18 year olds.

June deadline applications

An application (or choice) to a course in higher education to the provider that is made by the June 30 deadline. Each applicant can make up to five choices this way. The number of June deadline applications does not include choices made through the following routes: Clearing, Extra, Adjustment and RPAs. Applications made to October deadline courses received after the October deadline are not included in these statistics.

June deadline applicants

The number of applicants that made at least one application to the provider by the June 30 deadline.

June deadline applicants per 10,000 population

The number of UK domiciled 18 year old June deadline applicants to the provider divided by the number of UK 18 year olds in the population, multiplied by 10,000. This gives the number of 18 year olds, for every 10,000 in the population, who applied by the June 30 deadline. It is equivalent to the application rate. By referencing the underlying population this statistic shows how the number of June deadline applicants is changing in relation to the available pool of potential 18 year old applicants and so gives the chance that somebody from the group will apply to a provider by the June 30 deadline.

This statistic is only reported for 18 year olds.

Offers

An offer is defined as a provider's decision in response to an application to offer a place to an applicant, often subject to the applicant satisfying academic and/or other criteria, via a June deadline application (i.e. does not cover choices made through the following routes: Clearing, Extra, Adjustment and RPAs).

Offer rate

The number of offers made divided by the number of June deadline applications. This gives the proportion of all June deadline applications to the provider that received an offer.

Percentage point difference between offer rate and average offer rate

The offer rate minus the average offer rate.

The percentage point difference can be compared to the expected range of statistical variation resulting from the calculation of the average offer rate using the Average Offer Rate Lookup Table. Where the value of the percentage point difference lies outside of this range, the percentage point difference may be considered to represent a real difference between the offer rate and the average offer rate.

Other definitions

Age

This analysis uses country-specific age definitions that align with the cut off points for school and college cohorts within the different administrations of the UK. For England and Wales, ages are defined on the 31 August, for Northern Ireland on the 1 July and for Scotland on the 28 February the following year. Defining ages in this way matches the assignment of children to school cohorts. For applicants outside of the UK a cohort cut off of 31 August has been used. Numbers for applicants aged 17 and under are included in the tables that report numbers for all age groups. Providers in Scotland typically receive a higher proportion of applicants aged 17 and under compared to providers elsewhere in the UK.

Provider

A higher education provider - a university or college.

UK domiciled

Declared area of permanent residence within England, Northern Ireland, Scotland and Wales. Applicants from the Channel Islands and Isle of Man are not included.