

## R12 University of Reading

**Cycle years:** 2012 - 2017

**Cycle Reference Point:** End of Cycle

**Applicant coverage:** UK domiciled

**Reporting groups:** Sex, POLAR3, ethnic group

**Applicant statistics:** June deadline applicants, placed June deadline applicants, all placed applicants, June deadline applicants per 10,000 population, placed June deadline applicants per 10,000 population, all placed applicants per 10,000 population

**Application statistics:** June deadline applications, offers, offer rate, average offer rate, percentage point difference between offer rate and average offer rate, contribution of group to the average offer rate

**Non-disclosure controls:** To avoid the disclosure of information about any individual the following measures are taken

- Applicants, placed applicants, applications and offers are rounded to the nearest 5.
- Applicants/placed applicants per 10,000 population figures are reported as 0 if the applicant/placed applicant figures are rounded to 0.
- All statistics related to the offer rate are not reported when the number of applications for a group is less than 10. The percentage point difference between the offer rate and the average offer rate is not reported when the number of applications for a group is less than 50.
- Offer rates are reported as 0% if there are fewer than 5 offers, and 100% if the number of offers is within 5 of the number of applications. When the offer rate is reported as 0% or 100%, it is reported in italics.

### Contents:

18 year old applicants:	P.1
18 year old applications:	P.2
18 year old applicants by sex:	P.3
18 year old applications by sex:	P.4
18 year old applicants by POLAR3 quintile:	P.7
18 year old applications by POLAR3 quintile:	P.8
18 year old applicants by ethnic group:	P.11
18 year old applications by ethnic group:	P.12
Applicants (all ages):	P.15
Applications (all ages):	P.16
Applicants (all ages) by sex:	P.17
Applications (all ages) by sex:	P.18
Applicants (all ages) by POLAR3 quintile:	P.19
Applications (all ages) by POLAR3 quintile:	P.20
Applicants (all ages) by ethnic group:	P.21
Applications (all ages) by ethnic group:	P.22

## P.1 18 year old applicants

Statistic	2012	2013	2014	2015	2016	2017
June deadline applicants	12,565	11,840	10,745	13,450	12,710	12,190
Placed June deadline applicants	1,800	1,725	1,815	1,920	2,050	2,180
All placed applicants	1,835	1,825	1,920	2,080	2,365	2,690
June deadline applicants per 10,000 population	162.5	155.6	142.7	175.6	169.6	164.5
Placed June deadline applicants per 10,000	23.3	22.7	24.1	25.0	27.3	29.4
All placed applicants per 10,000 population	23.7	24.0	25.5	27.2	31.6	36.3

## P.2 18 year old applications

Statistic	2012	2013	2014	2015	2016	2017
June deadline applications	12,840	12,100	11,050	13,820	12,995	12,475
Offers	10,480	10,050	9,545	11,730	11,615	11,485
Offer rate	81.6%	83.0%	86.4%	84.9%	89.4%	92.1%

### P.3 18 year old applicants by sex

Statistic	Sex	2012	2013	2014	2015	2016	2017
June deadline applicants	Men	5,610	5,320	4,640	5,710	5,470	5,420
	Women	6,955	6,520	6,105	7,740	7,240	6,770
Placed June deadline applicants	Men	780	745	765	785	845	975
	Women	1,020	975	1,045	1,135	1,205	1,205
All placed applicants	Men	790	790	810	845	980	1,235
	Women	1,045	1,035	1,110	1,235	1,385	1,455
June deadline applicants per 10,000 population	Men	141.5	136.3	119.9	145.5	142.4	142.8
	Women	184.5	175.9	166.8	207.1	198.2	187.4
Placed June deadline applicants per 10,000 population	Men	19.7	19.1	19.8	20.0	22.0	25.6
	Women	27.0	26.4	28.6	30.3	32.9	33.4
All placed applicants per 10,000 population	Men	20.0	20.2	20.9	21.6	25.5	32.5
	Women	27.7	28.0	30.3	33.1	37.9	40.4

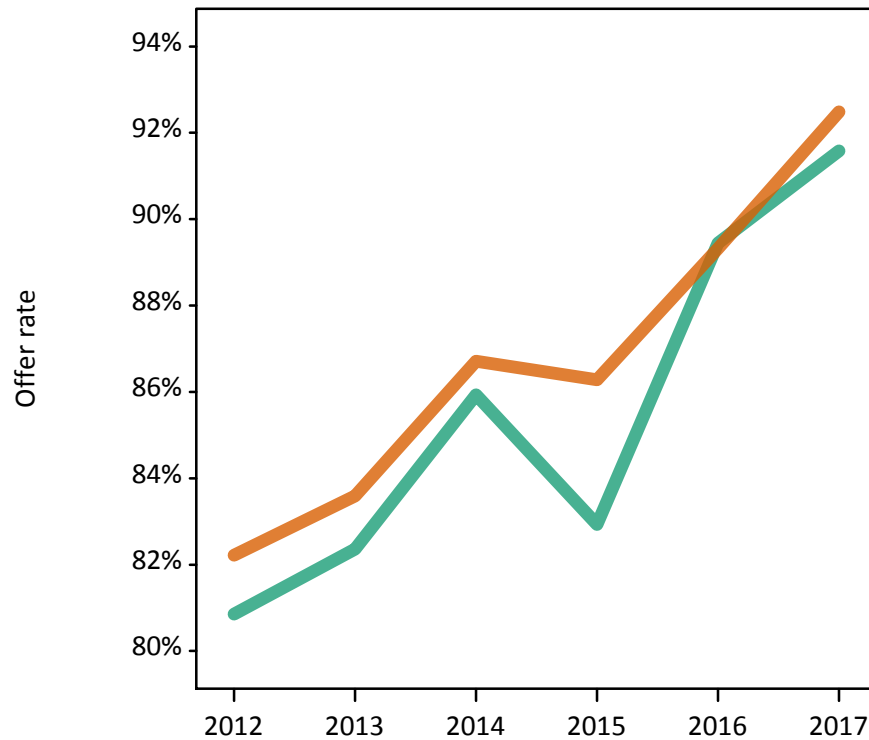
### P.4 18 year old applications by sex

Statistic	Sex	2012	2013	2014	2015	2016	2017
June deadline applications	Men	5,770	5,445	4,775	5,870	5,580	5,555
	Women	7,070	6,655	6,275	7,955	7,415	6,915
Offers	Men	4,665	4,485	4,105	4,865	4,990	5,090
	Women	5,810	5,565	5,440	6,860	6,620	6,395
Offer rate	Men	80.9%	82.4%	85.9%	82.9%	89.4%	91.6%
	Women	82.2%	83.6%	86.7%	86.3%	89.3%	92.5%
Average offer rate	Men	81.7%	82.7%	85.9%	82.8%	89.3%	91.6%
	Women	81.6%	83.3%	86.7%	86.3%	89.5%	92.5%
Percentage point difference between offer rate and average offer rate	Men	-0.8	-0.4	-0.0	0.1	0.2	-0.0
	Women	0.7	0.3	0.0	-0.1	-0.1	0.0
Contribution of group to the average offer rate	Men	0.584	0.590	0.583	0.570	0.576	0.587
	Women	0.661	0.664	0.682	0.682	0.681	0.668

### P.5 18 year old offer rate by sex

Note: The line for a group is not plotted when that group made fewer than 10 applications in any of the years from 2012-2017.

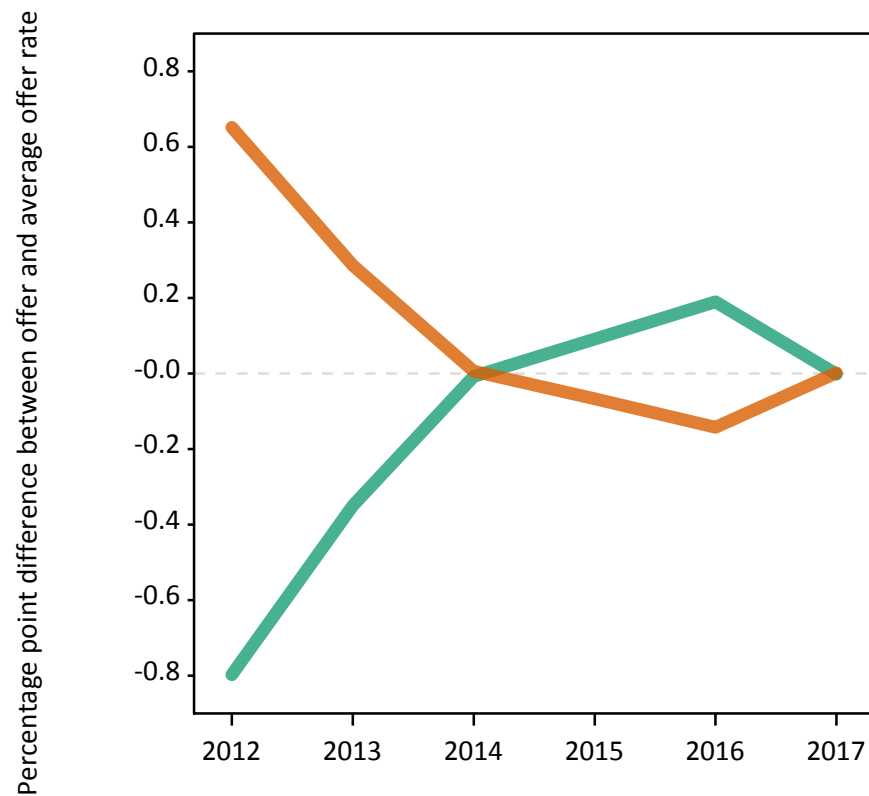
Men  
Women



### P.6 Percentage point difference between 18 year old offer rate and average offer rate by sex

Note: The line for a group is not plotted when that group made fewer than 50 applications in any of the years from 2012-2017.

Men  
Women



## P.7 18 year old applicants by POLAR3 quintile

Statistic	POLAR3 quintile	2012	2013	2014	2015	2016	2017
June deadline applicants	Quintile 1	825	810	775	1,030	885	920
	Quintile 2	1,560	1,490	1,355	1,730	1,600	1,485
	Quintile 3	2,265	2,135	1,955	2,475	2,375	2,260
	Quintile 4	3,355	3,220	2,845	3,500	3,290	3,155
	Quintile 5	4,540	4,165	3,795	4,695	4,535	4,335
Placed June deadline applicants	Quintile 1	120	115	120	140	115	115
	Quintile 2	210	205	215	245	250	250
	Quintile 3	335	275	330	320	340	410
	Quintile 4	485	475	515	510	570	585
	Quintile 5	650	645	625	705	770	815
All placed applicants	Quintile 1	120	120	130	145	130	135
	Quintile 2	210	215	220	265	280	310
	Quintile 3	340	295	350	345	380	505
	Quintile 4	495	505	540	550	655	700
	Quintile 5	660	685	680	765	915	1,040
June deadline applicants per 10,000 population	Quintile 1	58.0	58.1	55.6	73.4	65.6	69.1
	Quintile 2	104.1	101.2	92.7	116.5	110.6	104.7
	Quintile 3	146.8	140.1	129.9	161.2	157.9	151.7
	Quintile 4	211.4	205.9	184.5	223.5	213.1	206.4
	Quintile 5	270.1	251.9	232.7	280.3	274.5	264.0
Placed June deadline applicants per 10,000 population	Quintile 1	8.4	8.3	8.8	9.8	8.5	8.8
	Quintile 2	13.9	14.0	14.7	16.4	17.2	17.6
	Quintile 3	21.6	18.2	21.9	20.8	22.7	27.5
	Quintile 4	30.6	30.5	33.4	32.5	36.9	38.2
	Quintile 5	38.6	38.9	38.4	42.0	46.6	49.6
All placed applicants per 10,000 population	Quintile 1	8.5	8.7	9.2	10.5	9.6	10.2
	Quintile 2	14.1	14.5	15.0	18.0	19.4	22.0
	Quintile 3	22.1	19.3	23.2	22.5	25.3	33.8
	Quintile 4	31.3	32.4	35.0	35.3	42.5	45.7
	Quintile 5	39.4	41.5	41.6	45.8	55.4	63.2

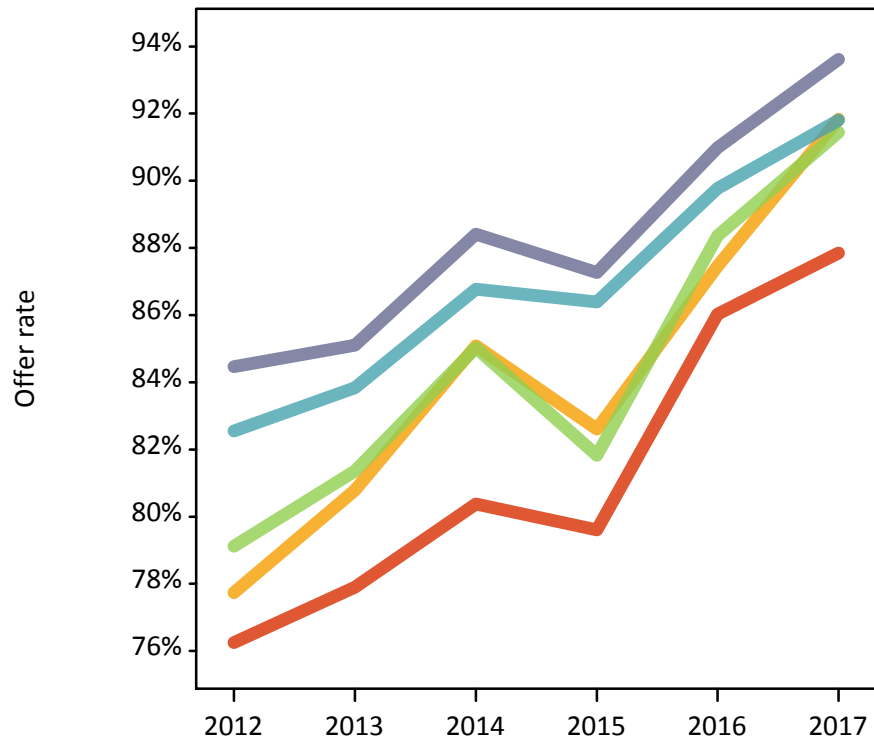
## P.8 18 year old applications by POLAR3 quintile

Statistic	POLAR3 quintile	2012	2013	2014	2015	2016	2017
June deadline applications	Quintile 1	840	830	790	1,065	900	940
	Quintile 2	1,600	1,530	1,395	1,770	1,635	1,520
	Quintile 3	2,315	2,185	2,010	2,535	2,435	2,315
	Quintile 4	3,435	3,285	2,935	3,610	3,375	3,220
	Quintile 5	4,635	4,255	3,900	4,815	4,625	4,445
Offers	Quintile 1	640	645	635	845	775	825
	Quintile 2	1,245	1,235	1,185	1,465	1,430	1,395
	Quintile 3	1,830	1,775	1,710	2,075	2,150	2,115
	Quintile 4	2,835	2,755	2,545	3,115	3,030	2,955
	Quintile 5	3,915	3,625	3,450	4,205	4,210	4,160
Offer rate	Quintile 1	76.2%	77.9%	80.4%	79.6%	86.0%	87.8%
	Quintile 2	77.7%	80.8%	85.1%	82.6%	87.5%	91.8%
	Quintile 3	79.1%	81.4%	85.0%	81.8%	88.4%	91.4%
	Quintile 4	82.6%	83.8%	86.8%	86.4%	89.8%	91.8%
	Quintile 5	84.5%	85.1%	88.4%	87.3%	91.0%	93.6%
Average offer rate	Quintile 1	76.8%	78.4%	82.3%	80.3%	87.0%	89.5%
	Quintile 2	79.3%	80.9%	84.3%	83.3%	88.1%	91.0%
	Quintile 3	80.3%	81.9%	85.7%	82.4%	88.6%	92.2%
	Quintile 4	82.0%	84.3%	87.0%	86.3%	89.6%	92.1%
	Quintile 5	83.6%	84.4%	87.8%	86.6%	90.6%	92.9%
Percentage point difference between offer rate and average offer rate	Quintile 1	-0.6	-0.5	-1.9	-0.7	-1.0	-1.7
	Quintile 2	-1.5	-0.1	0.8	-0.7	-0.6	0.8
	Quintile 3	-1.2	-0.6	-0.7	-0.5	-0.2	-0.8
	Quintile 4	0.6	-0.4	-0.3	0.0	0.2	-0.3
	Quintile 5	0.8	0.7	0.6	0.7	0.4	0.7
Contribution of group to the average offer rate	Quintile 1	0.141	0.151	0.163	0.159	0.143	0.154
	Quintile 2	0.187	0.197	0.203	0.192	0.191	0.195
	Quintile 3	0.236	0.249	0.250	0.239	0.246	0.249
	Quintile 4	0.319	0.324	0.325	0.312	0.309	0.315
	Quintile 5	0.417	0.410	0.413	0.401	0.408	0.415

### P.9 18 year old offer rate by POLAR3 quintile

Note: The line for a group is not plotted when that group made fewer than 10 applications in any of the years from 2012-2017.

- Quintile 1
- Quintile 2
- Quintile 3
- Quintile 4
- Quintile 5



### P.10 Percentage point difference between 18 year old offer rate and average offer rate by POLAR3 quintile

Note: The line for a group is not plotted when that group made fewer than 50 applications in any of the years from 2012-2017.

- Quintile 1
- Quintile 2
- Quintile 3
- Quintile 4
- Quintile 5



## P.11 18 year old applicants by ethnic group

Statistic	Ethnic group	2012	2013	2014	2015	2016	2017
June deadline applicants	Asian	1,240	1,175	1,005	1,275	1,305	1,290
	Black	540	505	440	590	605	535
	Mixed	410	430	425	605	610	565
	White	10,160	9,510	8,695	10,785	9,920	9,550
	Other	140	165	130	145	185	180
Placed June deadline applicants	Asian	155	150	135	125	170	185
	Black	45	45	40	40	55	80
	Mixed	55	60	70	80	85	90
	White	1,525	1,435	1,540	1,655	1,700	1,780
	Other	15	25	15	15	25	25
All placed applicants	Asian	160	165	150	160	220	295
	Black	45	45	50	45	75	130
	Mixed	55	60	75	85	100	120
	White	1,555	1,515	1,615	1,770	1,925	2,095
	Other	15	25	15	15	35	35
June deadline applicants per 10,000 population	Asian	191.3	178.2	148.0	179.9	181.6	175.2
	Black	191.0	170.1	145.1	185.7	193.9	169.4
	Mixed	157.4	158.3	148.1	195.9	194.2	176.6
	White	157.3	151.2	141.0	173.1	164.0	160.9
	Other	156.0	179.8	139.7	149.4	184.9	173.8
Placed June deadline applicants per 10,000 population	Asian	23.8	22.9	20.1	17.4	23.5	25.4
	Black	15.3	14.5	13.5	12.6	18.2	25.7
	Mixed	20.7	21.8	24.7	25.9	27.3	28.3
	White	23.6	22.8	24.9	26.6	28.1	30.0
	Other	14.7	28.7	16.1	14.5	27.1	22.3
All placed applicants per 10,000 population	Asian	24.6	25.3	22.1	22.6	30.4	39.8
	Black	15.6	15.8	16.8	14.1	23.6	41.9
	Mixed	21.1	22.6	26.8	27.6	31.8	37.4
	White	24.1	24.1	26.2	28.4	31.8	35.3
	Other	15.8	29.8	17.2	16.6	37.2	34.0



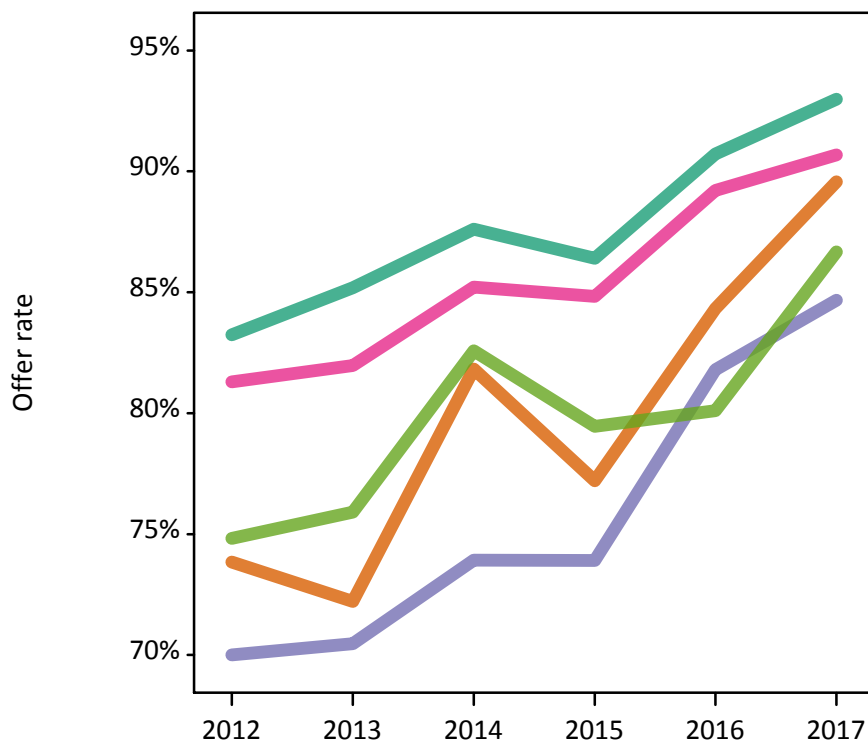
## P.12 18 year old applications by ethnic group

Statistic	Ethnic group	2012	2013	2014	2015	2016	2017
June deadline applications	Asian	1,260	1,195	1,030	1,290	1,335	1,315
	Black	540	510	440	600	610	535
	Mixed	415	440	435	615	620	580
	White	10,405	9,735	8,965	11,115	10,160	9,790
	Other	140	165	130	145	185	180
Offers	Asian	930	865	840	995	1,125	1,175
	Black	380	360	325	440	500	455
	Mixed	340	360	370	520	555	525
	White	8,660	8,295	7,850	9,605	9,220	9,105
	Other	105	125	110	115	150	155
Offer rate	Asian	73.8%	72.2%	81.8%	77.2%	84.3%	89.6%
	Black	70.0%	70.5%	73.9%	73.9%	81.8%	84.7%
	Mixed	81.3%	82.0%	85.2%	84.8%	89.2%	90.7%
	White	83.2%	85.2%	87.6%	86.4%	90.7%	93.0%
	Other	74.8%	75.9%	82.6%	79.5%	80.1%	86.7%
Average offer rate	Asian	75.6%	75.3%	81.8%	79.3%	85.4%	90.1%
	Black	73.6%	72.6%	78.8%	77.5%	83.5%	86.8%
	Mixed	81.4%	81.5%	85.6%	84.7%	89.7%	90.7%
	White	82.8%	84.7%	87.4%	86.0%	90.5%	92.8%
	Other	78.6%	78.3%	78.7%	79.3%	79.5%	86.7%
Percentage point difference between offer rate and average offer rate	Asian	-1.8	-3.1	-0.0	-2.1	-1.1	-0.5
	Black	-3.6	-2.1	-4.9	-3.5	-1.7	-2.2
	Mixed	-0.1	0.5	-0.4	0.1	-0.5	-0.1
	White	0.5	0.5	0.2	0.4	0.3	0.2
	Other	-3.8	-2.4	3.9	0.2	0.6	-0.0
Contribution of group to the average offer rate	Asian	0.228	0.250	0.237	0.234	0.224	0.236
	Black	0.128	0.159	0.162	0.149	0.152	0.137
	Mixed	0.107	0.113	0.132	0.117	0.111	0.119
	White	0.841	0.844	0.848	0.840	0.820	0.824
	Other	0.082	0.088	0.108	0.083	0.106	0.093

### P.13 18 year old offer rate by ethnic group

Note: The line for a group is not plotted when that group made fewer than 10 applications in any of the years from 2012-2017.

- Asian
- Black
- Mixed
- White
- Other



### P.14 Percentage point difference between 18 year old offer rate and average offer rate by ethnic group

Note: The line for a group is not plotted when that group made fewer than 50 applications in any of the years from 2012-2017.

- Asian
- Black
- Mixed
- White
- Other



### P.15 Applicants (all ages)

Statistic	2012	2013	2014	2015	2016	2017
June deadline applicants	17,120	16,975	15,740	19,010	17,895	17,005
Placed June deadline applicants	2,435	2,405	2,620	2,685	2,865	3,105
All placed applicants	2,535	2,615	2,850	2,975	3,360	3,825

### P.16 Applications (all ages)

Statistic	2012	2013	2014	2015	2016	2017
June deadline applications	17,640	17,455	16,265	19,625	18,410	17,520
Offers	13,195	13,260	12,995	15,445	15,480	15,195
Offer rate	74.8%	76.0%	79.9%	78.7%	84.1%	86.7%

### P.17 Applicants (all ages) by sex

Statistic	Sex	2012	2013	2014	2015	2016	2017
June deadline applicants	Men	7,870	7,900	7,105	8,465	8,080	7,835
	Women	9,245	9,075	8,635	10,545	9,815	9,170
Placed June deadline applicants	Men	1,080	1,060	1,150	1,120	1,230	1,385
	Women	1,355	1,345	1,470	1,560	1,635	1,720
All placed applicants	Men	1,095	1,140	1,235	1,225	1,430	1,750
	Women	1,440	1,475	1,615	1,750	1,930	2,075

### P.18 Applications (all ages) by sex

Statistic	Sex	2012	2013	2014	2015	2016	2017
June deadline applications	Men	8,140	8,160	7,355	8,730	8,305	8,085
	Women	9,505	9,295	8,910	10,895	10,105	9,435
Offers	Men	6,005	6,150	5,790	6,650	6,950	6,920
	Women	7,190	7,110	7,205	8,795	8,530	8,275
Offer rate	Men	73.8%	75.4%	78.8%	76.2%	83.7%	85.6%
	Women	75.7%	76.5%	80.9%	80.7%	84.4%	87.7%

### P.19 Applicants (all ages) by POLAR3 quintile

Statistic	POLAR3 quintile	2012	2013	2014	2015	2016	2017
June deadline applicants	Quintile 1	1,240	1,240	1,255	1,535	1,365	1,370
	Quintile 2	2,180	2,250	2,030	2,495	2,310	2,140
	Quintile 3	3,135	3,065	2,870	3,510	3,355	3,165
	Quintile 4	4,510	4,550	4,085	4,925	4,640	4,440
	Quintile 5	6,020	5,850	5,465	6,495	6,185	5,825
Placed June deadline applicants	Quintile 1	170	160	190	200	180	200
	Quintile 2	305	310	335	345	345	370
	Quintile 3	440	390	465	460	500	585
	Quintile 4	660	675	725	705	785	820
	Quintile 5	855	865	900	965	1,050	1,115
All placed applicants	Quintile 1	175	175	205	225	210	230
	Quintile 2	320	325	355	385	400	455
	Quintile 3	460	435	500	505	575	720
	Quintile 4	685	730	780	780	920	990
	Quintile 5	890	940	995	1,080	1,255	1,420

### P.20 Applications (all ages) by POLAR3 quintile

Statistic	POLAR3 quintile	2012	2013	2014	2015	2016	2017
June deadline applications	Quintile 1	1,280	1,275	1,300	1,600	1,405	1,410
	Quintile 2	2,255	2,325	2,120	2,575	2,385	2,210
	Quintile 3	3,235	3,140	2,955	3,615	3,465	3,260
	Quintile 4	4,640	4,690	4,225	5,095	4,775	4,570
	Quintile 5	6,195	5,995	5,625	6,695	6,340	6,005
Offers	Quintile 1	855	865	925	1,140	1,110	1,150
	Quintile 2	1,565	1,665	1,650	1,960	1,925	1,880
	Quintile 3	2,315	2,325	2,300	2,760	2,880	2,825
	Quintile 4	3,550	3,615	3,425	4,085	4,030	3,950
	Quintile 5	4,880	4,770	4,670	5,465	5,510	5,335
Offer rate	Quintile 1	67.0%	67.9%	71.1%	71.4%	78.9%	81.7%
	Quintile 2	69.4%	71.5%	77.9%	76.1%	80.8%	85.1%
	Quintile 3	71.7%	74.0%	77.8%	76.3%	83.1%	86.7%
	Quintile 4	76.5%	77.2%	81.0%	80.2%	84.4%	86.5%
	Quintile 5	78.8%	79.6%	83.0%	81.6%	86.9%	88.8%

## P.21 Applicants (all ages) by ethnic group

Statistic	Ethnic group	2012	2013	2014	2015	2016	2017
June deadline applicants	Asian	2,010	2,055	1,845	2,140	2,145	2,075
	Black	1,020	950	875	1,090	1,055	910
	Mixed	620	655	665	890	885	810
	White	13,095	12,890	11,970	14,455	13,325	12,720
	Other	250	315	285	315	335	350
Placed June deadline applicants	Asian	215	245	260	210	260	320
	Black	75	75	75	75	95	135
	Mixed	75	80	105	110	130	120
	White	2,040	1,950	2,135	2,245	2,320	2,450
	Other	20	40	35	30	45	50
All placed applicants	Asian	225	275	290	260	340	480
	Black	75	85	90	90	130	205
	Mixed	75	90	115	125	150	165
	White	2,115	2,105	2,295	2,445	2,655	2,875
	Other	20	50	40	40	60	70

## P.22 Applications (all ages) by ethnic group

Statistic	Ethnic group	2012	2013	2014	2015	2016	2017
June deadline applications	Asian	2,060	2,105	1,910	2,185	2,185	2,120
	Black	1,045	960	890	1,110	1,070	920
	Mixed	635	675	675	915	900	830
	White	13,515	13,275	12,395	14,970	13,755	13,155
	Other	255	325	290	320	340	360
Offers	Asian	1,360	1,365	1,400	1,525	1,695	1,750
	Black	560	540	540	670	775	710
	Mixed	450	505	525	695	755	710
	White	10,585	10,560	10,255	12,265	11,885	11,625
	Other	150	210	200	200	245	290
Offer rate	Asian	66.1%	64.8%	73.4%	69.9%	77.6%	82.5%
	Black	53.5%	56.1%	60.7%	60.6%	72.3%	77.1%
	Mixed	70.6%	75.0%	77.5%	76.2%	83.8%	85.4%
	White	78.3%	79.6%	82.7%	81.9%	86.4%	88.4%
	Other	58.4%	64.6%	68.5%	61.9%	72.9%	80.4%

## Technical Notes and Definitions

### UCAS undergraduate scheme

#### Adjustment

Adjustment allows applicants who have met and exceeded the terms of their conditional firm offer to seek and find a place at another provider whilst keeping their place at their original firm choice provider.

#### Clearing

Clearing is a route for applicants that are not placed and holding no offers to find a place on courses with vacancies.

#### Cycle year

The UCAS application cycle which runs from September to October the following year. For example the 2017 cycle runs from September 2016 through to October 2017.

#### End of cycle

The point in the cycle to which the numbers in this report refer, and the point at which the cycle is closed such that no more applications or offers can be made, and no more applicants can be placed. Numbers reported at the end of cycle exclude information on a small number of applicants who cancelled during the cycle.

#### Extra

Applicants who are unsuccessful in obtaining an offer or decline all offers may be eligible to apply through Extra, where they can apply to one further course at a time. Extra operates from 25 February until early July. It provides applicants who are eligible the possibility of obtaining an offer before exam results are published and Clearing starts.

#### June 30 deadline

The deadline for main scheme applications. Applicants who apply after this date will go directly into Clearing.

#### Record of Prior Acceptance (RPA)

RPA is an acceptance route used when a provider informs UCAS of applicants it has accepted outside of the normal application process (e.g. individuals who have applied directly to the provider).

### Reporting groups

#### Ethnic group

High level grouping of ethnic origin as declared by the applicant: 'White', 'Black', 'Asian', 'Mixed', 'Other', 'Unknown'. Applicants who declare themselves as 'Unknown' ethnic origin are not reported in these tables, but are included in the associated csv data file.

#### POLAR3 quintile

Developed by HEFCE, POLAR3 classifies small areas across the UK into five groups according to their level of young participation in Higher Education. Each of these groups represents around 20 per cent of young people and is ranked from Quintile 1 (areas with the lowest young participation rates, considered as the most disadvantaged) to Quintile 5 (highest young participation rates, considered most advantaged). POLAR3 is based on the participation rates of young people between 2005 and 2009 who entered Higher Education between 2005-06 and 2010-11, therefore is most suitable for applicants aged 19 and under. These groups are assigned using the postcode declared by the applicant at the time of their application. If a UK postcode is invalid, considered unsafe for measurement or there is no link to Census geography possible then the applicant is not assigned to a quintile. Applicants with no POLAR3 quintile are not reported.

#### Sex

Sex as declared by the applicant.

### **SIMD 2016 quintile**

Scottish index of multiple deprivation (SIMD) identifies small area concentrations of multiple deprivation across all of Scotland, providing a relative measure of deprivation amongst 6505 small areas (data zones) based on 7 socio-economic domains. These small areas are classified into five groups ranked from Quintile 1 (considered the most deprived) to Quintile 5 (considered least deprived), with equal populations in each quintile. Quintiles are assigned using the postcode declared by the applicant, applicants declaring invalid postcodes are classified as 'Not assigned' and are not reported.

SIMD is only defined for applicants domiciled in Scotland, therefore any applicants domiciled outside of Scotland cannot be assigned to an SIMD quintile and so are not reported for this measure.

SIMD is only reported for providers in Scotland. Application and entry rates by SIMD are reported in the 2017 End of Cycle Report and the 2017 cycle January deadline application rate report.

### **Statistics reported in the tables**

#### **All placed applicants**

The number of applicants placed for entry into higher education at the provider through one of their choices, including any choices made through Extra, or via Adjustment, Clearing or RPA.

#### **All placed applicants per 10,000 population**

The number of total UK domiciled 18 year old placed applicants for entry into higher education at the provider divided by the number of UK 18 year olds in the population, multiplied by 10,000. This gives the number of 18 year olds, for every 10,000 in the population, that were placed at the provider through one of their choices, including any choices made through Extra, or via Adjustment, Clearing or RPA. It is an alternative way of expressing the entry rate to a provider. By referencing the underlying population this statistic shows how the number of placed applicants is changing in relation to the available pool of potential applicants and so gives the chance that somebody from the group will be placed at a provider.

This statistic is only reported for 18 year olds.

#### **Average offer rate**

The offer rate that you might expect if the predicted grades and subject choice of applicants were the only factors that influenced whether an applicant was made an offer by the provider. The average offer rate is calculated by dividing applicants according to their specific combination of grades (for A levels the best three predicted grades are used, for BTECs, International Baccalaureate and Scottish Highers and Advanced Highers, predicted grades along with any grades already achieved upon applying are used) and subject choice. For each combination the number of main scheme offers is divided by the number of main scheme applications, to give an overall offer rate. This is then multiplied by the number of applications made by the group for which the average offer rate is being calculated (for example POLAR3 quintile 1), to give an average number of offers for that group. These average number of offers are then added together across all combinations of predicted grade and subject and divided by the number of main scheme applications from the group to give the average offer rate.

The average offer rate does not attempt to control for any other factors that may play a part in the decision to make an offer, such as the subject of the qualifications studied, their relevance to a course, or the grade in each subject; higher numbers of A levels being studied; the exact profile of grades predicted; personal statements; teacher references; interviews; or any other criteria (such as work experience or portfolios) that may be part of the admissions decision.

This statistic is only reported for 18 year olds.



### Contribution of group to the average offer rate

The way in which the average offer rate is defined means that the pattern of application and offers of a group (for example POLAR3 quintile 1) will always contribute, in part, to the average offer rate for that group. When this contribution is large, the average offer rate will mainly reflect the patterns for the group, meaning that the value of the average offer rate will be similar to the offer rate, the percentage point difference statistic will be small, and any real difference between the offer rate and what might be expected given the predicted grades and subject choices of the applicants will be difficult to detect.

Values of the contribution of group to the average offer rate range between 0 and 1. The closer the value is to 1 the greater the contribution a group makes to its own average offer rate.

This statistic is only reported for 18 year olds.

### Placed June deadline applicants

An applicant who has been placed for entry into higher education at the provider through a June deadline application.

### Placed June deadline applicants per 10,000 population

The number of UK domiciled 18 year old placed June deadline applicants at the provider divided by the number of UK 18 year olds in the population, multiplied by 10,000. This gives the number of 18 year olds, for every 10,000 in the population, that were placed at the provider through one of their June deadline applications. It is an alternative way of expressing the entry rate to a provider, but for placed June deadline applicants only. By referencing the underlying population this statistic shows how the number of placed June deadline applicants is changing in relation to the available pool of potential 18 year old applicants and so gives the chance that somebody from the group will be placed at a provider through a June deadline application.

This statistic is only reported for 18 year olds.

### June deadline applications

An application (or choice) to a course in higher education to the provider that is made by the June 30 deadline. Each applicant can make up to five choices this way. The number of June deadline applications does not include choices made through the following routes: Clearing, Extra, Adjustment and RPAs. Applications made to October deadline courses received after the October deadline are not included in these statistics.

### June deadline applicants

The number of applicants that made at least one application to the provider by the June 30 deadline.

### June deadline applicants per 10,000 population

The number of UK domiciled 18 year old June deadline applicants to the provider divided by the number of UK 18 year olds in the population, multiplied by 10,000. This gives the number of 18 year olds, for every 10,000 in the population, who applied by the June 30 deadline. It is equivalent to the application rate. By referencing the underlying population this statistic shows how the number of June deadline applicants is changing in relation to the available pool of potential 18 year old applicants and so gives the chance that somebody from the group will apply to a provider by the June 30 deadline.

This statistic is only reported for 18 year olds.

### Offers

An offer is defined as a provider's decision in response to an application to offer a place to an applicant, often subject to the applicant satisfying academic and/or other criteria, via a June deadline application (i.e. does not cover choices made through the following routes: Clearing, Extra, Adjustment and RPAs).

### Offer rate

The number of offers made divided by the number of June deadline applications. This gives the proportion of all June deadline applications to the provider that received an offer.

### Percentage point difference between offer rate and average offer rate

The offer rate minus the average offer rate.

The percentage point difference can be compared to the expected range of statistical variation resulting from the calculation of the average offer rate using the Average Offer Rate Lookup Table. Where the value of the percentage point difference lies outside of this range, the percentage point difference may be considered to represent a real difference between the offer rate and the average offer rate.

### Other definitions

#### Age

This analysis uses country-specific age definitions that align with the cut off points for school and college cohorts within the different administrations of the UK. For England and Wales, ages are defined on the 31 August, for Northern Ireland on the 1 July and for Scotland on the 28 February the following year. Defining ages in this way matches the assignment of children to school cohorts. For applicants outside of the UK a cohort cut off of 31 August has been used. Numbers for applicants aged 17 and under are included in the tables that report numbers for all age groups. Providers in Scotland typically receive a higher proportion of applicants aged 17 and under compared to providers elsewhere in the UK.

#### Provider

A higher education provider - a university or college.

#### UK domiciled

Declared area of permanent residence within England, Northern Ireland, Scotland and Wales. Applicants from the Channel Islands and Isle of Man are not included.