

Q75 Queens University Belfast

Cycle years: 2012 - 2017

Cycle Reference Point: End of Cycle

Applicant coverage: UK domiciled

Reporting groups: Sex, POLAR3, ethnic group

Applicant statistics: June deadline applicants, placed June deadline applicants, all placed applicants, June deadline applicants per 10,000 population, placed June deadline applicants per 10,000 population, all placed applicants per 10,000 population

Application statistics: June deadline applications, offers, offer rate, average offer rate, percentage point difference between offer rate and average offer rate, contribution of group to the average offer rate

Non-disclosure controls: To avoid the disclosure of information about any individual the following measures are taken

- Applicants, placed applicants, applications and offers are rounded to the nearest 5.
- Applicants/placed applicants per 10,000 population figures are reported as 0 if the applicant/placed applicant figures are rounded to 0.
- All statistics related to the offer rate are not reported when the number of applications for a group is less than 10. The percentage point difference between the offer rate and the average offer rate is not reported when the number of applications for a group is less than 50.
- Offer rates are reported as 0% if there are fewer than 5 offers, and 100% if the number of offers is within 5 of the number of applications. When the offer rate is reported as 0% or 100%, it is reported in italics.

Contents:

- 18 year old applicants: P.1
- 18 year old applications: P.2
- 18 year old applicants by sex: P.3
- 18 year old applications by sex: P.4
- 18 year old applicants by POLAR3 quintile: P.7
- 18 year old applications by POLAR3 quintile: P.8
- 18 year old applicants by ethnic group: P.11
- 18 year old applications by ethnic group: P.12
- Applicants (all ages): P.15
- Applications (all ages): P.16
- Applicants (all ages) by sex: P.17
- Applications (all ages) by sex: P.18
- Applicants (all ages) by POLAR3 quintile: P.19
- Applications (all ages) by POLAR3 quintile: P.20
- Applicants (all ages) by ethnic group: P.21
- Applications (all ages) by ethnic group: P.22

P.1 18 year old applicants

Statistic	2012	2013	2014	2015	2016	2017
June deadline applicants	8,060	8,715	8,755	9,095	8,840	8,850
Placed June deadline applicants	2,590	2,840	2,690	2,545	2,475	2,445
All placed applicants	2,720	2,955	2,815	2,660	2,625	2,605
June deadline applicants per 10,000 population	104.2	114.5	116.3	118.7	118.0	119.5
Placed June deadline applicants per 10,000	33.5	37.3	35.7	33.2	33.0	33.0
All placed applicants per 10,000 population	35.2	38.8	37.3	34.7	35.0	35.2

P.2 18 year old applications

Statistic	2012	2013	2014	2015	2016	2017
June deadline applications	14,095	15,625	15,580	15,975	15,375	15,300
Offers	12,975	13,310	13,495	13,755	13,090	13,150
Offer rate	92.1%	85.2%	86.6%	86.1%	85.2%	86.0%

P.3 18 year old applicants by sex

Statistic	Sex	2012	2013	2014	2015	2016	2017
June deadline applicants	Men	3,885	3,995	3,955	4,000	3,910	3,860
	Women	4,170	4,720	4,800	5,095	4,930	4,990
Placed June deadline applicants	Men	1,260	1,380	1,295	1,160	1,160	1,090
	Women	1,330	1,460	1,400	1,390	1,315	1,355
All placed applicants	Men	1,310	1,425	1,345	1,205	1,230	1,160
	Women	1,410	1,530	1,470	1,455	1,395	1,445
June deadline applicants per 10,000 population	Men	98.0	102.3	102.1	102.0	101.8	101.7
	Women	110.7	127.4	131.2	136.3	134.9	138.2
Placed June deadline applicants per 10,000 population	Men	31.8	35.4	33.4	29.5	30.2	28.8
	Women	35.3	39.4	38.2	37.1	36.0	37.5
All placed applicants per 10,000 population	Men	33.0	36.5	34.7	30.7	32.0	30.5
	Women	37.4	41.3	40.2	38.9	38.1	40.1

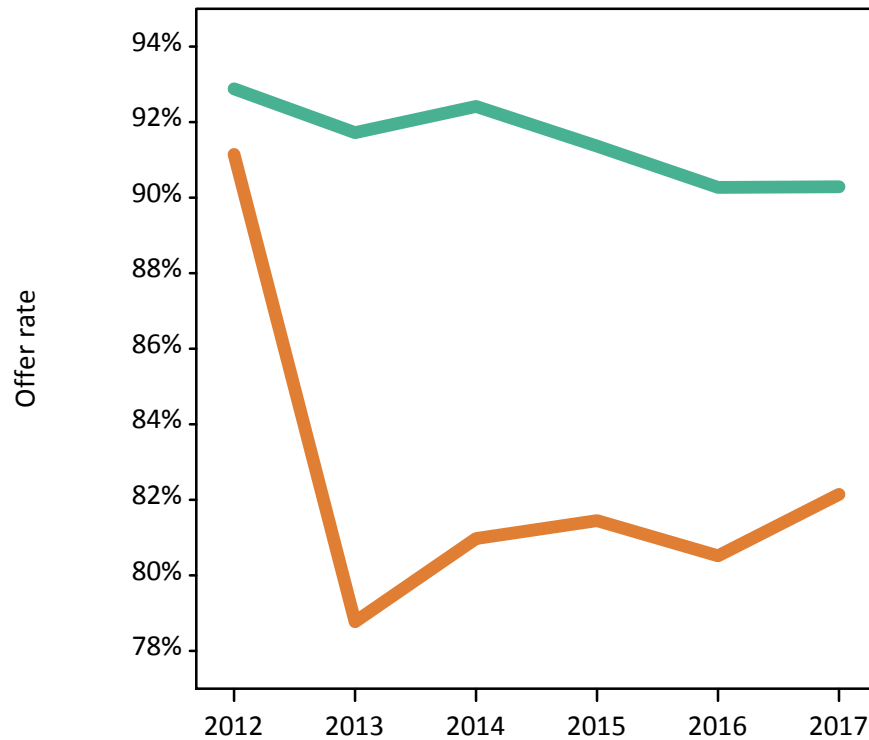
P.4 18 year old applications by sex

Statistic	Sex	2012	2013	2014	2015	2016	2017
June deadline applications	Men	7,455	7,735	7,670	7,475	7,310	7,155
	Women	6,640	7,890	7,910	8,500	8,065	8,145
Offers	Men	6,920	7,095	7,090	6,830	6,595	6,460
	Women	6,050	6,215	6,405	6,920	6,495	6,690
Offer rate	Men	92.9%	91.7%	92.4%	91.4%	90.3%	90.3%
	Women	91.1%	78.8%	81.0%	81.5%	80.5%	82.1%
Average offer rate	Men	93.2%	92.1%	92.8%	91.9%	91.1%	90.8%
	Women	90.7%	78.4%	80.6%	81.0%	79.8%	81.7%
Percentage point difference between offer rate and average offer rate	Men	-0.4	-0.4	-0.4	-0.5	-0.8	-0.5
	Women	0.4	0.4	0.4	0.4	0.8	0.4
Contribution of group to the average offer rate	Men	0.641	0.658	0.637	0.608	0.621	0.612
	Women	0.597	0.664	0.648	0.655	0.656	0.659

P.5 18 year old offer rate by sex

Note: The line for a group is not plotted when that group made fewer than 10 applications in any of the years from 2012-2017.

Men
Women



P.6 Percentage point difference between 18 year old offer rate and average offer rate by sex

Note: The line for a group is not plotted when that group made fewer than 50 applications in any of the years from 2012-2017.

Men
Women



P.7 18 year old applicants by POLAR3 quintile

Statistic	POLAR3 quintile	2012	2013	2014	2015	2016	2017
June deadline applicants	Quintile 1	480	520	540	590	540	575
	Quintile 2	755	820	865	890	960	865
	Quintile 3	1,195	1,335	1,360	1,410	1,445	1,330
	Quintile 4	2,340	2,495	2,580	2,660	2,575	2,690
	Quintile 5	3,280	3,520	3,405	3,535	3,310	3,370
Placed June deadline applicants	Quintile 1	135	125	140	115	125	135
	Quintile 2	220	265	240	220	230	220
	Quintile 3	390	405	415	395	385	360
	Quintile 4	765	850	815	805	775	775
	Quintile 5	1,080	1,185	1,080	1,015	950	945
All placed applicants	Quintile 1	135	130	145	125	135	145
	Quintile 2	230	275	250	225	250	235
	Quintile 3	410	420	440	415	415	375
	Quintile 4	805	885	850	840	815	830
	Quintile 5	1,140	1,235	1,125	1,055	1,005	1,015
June deadline applicants per 10,000 population	Quintile 1	33.8	37.5	38.7	42.0	40.0	43.4
	Quintile 2	50.3	55.7	59.1	60.1	66.4	61.0
	Quintile 3	77.3	87.5	90.2	91.7	96.0	89.4
	Quintile 4	147.3	159.6	167.5	170.0	166.8	176.1
	Quintile 5	195.3	213.0	208.7	211.0	200.3	205.3
Placed June deadline applicants per 10,000 population	Quintile 1	9.4	9.0	10.0	8.1	9.4	10.2
	Quintile 2	14.6	18.1	16.4	14.7	16.0	15.6
	Quintile 3	25.1	26.5	27.7	25.7	25.7	24.2
	Quintile 4	48.2	54.5	53.0	51.5	50.3	50.9
	Quintile 5	64.4	71.7	66.1	60.5	57.6	57.5
All placed applicants per 10,000 population	Quintile 1	9.5	9.4	10.4	8.9	10.1	10.8
	Quintile 2	15.3	18.6	16.9	15.3	17.2	16.7
	Quintile 3	26.6	27.5	29.2	27.1	27.5	25.2
	Quintile 4	50.7	56.5	55.2	53.5	52.8	54.4
	Quintile 5	67.7	74.7	69.1	62.9	60.8	61.7

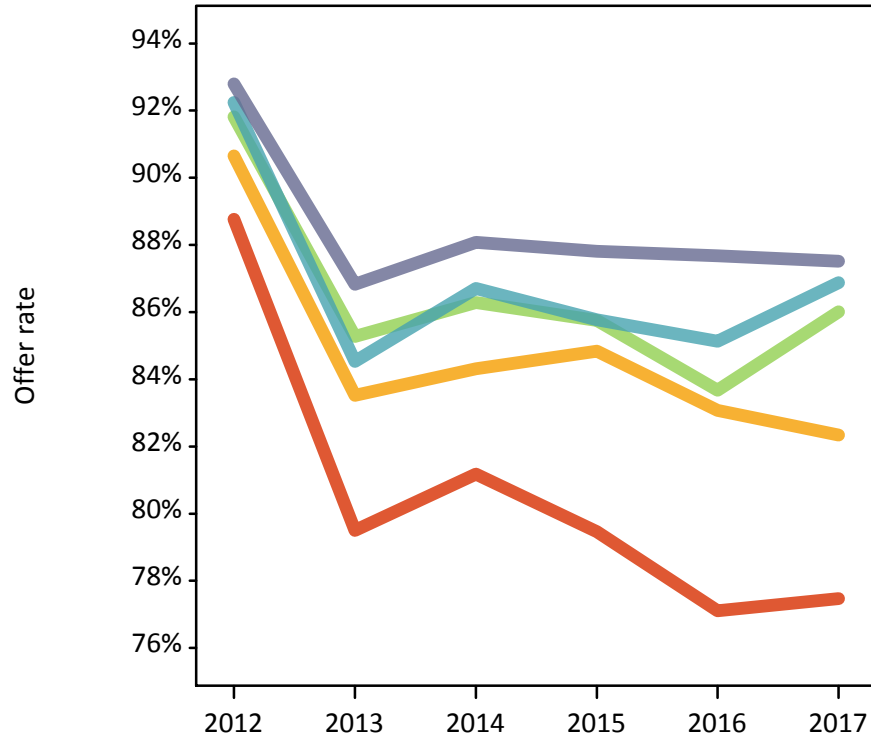
P.8 18 year old applications by POLAR3 quintile

Statistic	POLAR3 quintile	2012	2013	2014	2015	2016	2017
June deadline applications	Quintile 1	820	920	920	970	925	965
	Quintile 2	1,285	1,475	1,525	1,510	1,615	1,465
	Quintile 3	2,135	2,390	2,390	2,500	2,495	2,285
	Quintile 4	4,150	4,585	4,695	4,750	4,565	4,770
	Quintile 5	5,685	6,220	6,030	6,225	5,755	5,780
Offers	Quintile 1	725	735	745	770	715	745
	Quintile 2	1,165	1,230	1,285	1,280	1,340	1,210
	Quintile 3	1,960	2,040	2,065	2,140	2,085	1,965
	Quintile 4	3,825	3,875	4,070	4,075	3,885	4,145
	Quintile 5	5,275	5,400	5,315	5,470	5,045	5,060
Offer rate	Quintile 1	88.8%	79.5%	81.2%	79.5%	77.1%	77.5%
	Quintile 2	90.7%	83.5%	84.3%	84.8%	83.1%	82.3%
	Quintile 3	91.8%	85.3%	86.3%	85.7%	83.7%	86.0%
	Quintile 4	92.2%	84.5%	86.7%	85.8%	85.1%	86.9%
	Quintile 5	92.8%	86.8%	88.1%	87.8%	87.7%	87.5%
Average offer rate	Quintile 1	89.8%	82.4%	83.7%	82.4%	80.7%	82.0%
	Quintile 2	92.2%	84.1%	85.6%	85.3%	84.0%	83.4%
	Quintile 3	92.2%	84.8%	86.6%	86.3%	84.8%	86.0%
	Quintile 4	91.9%	84.9%	86.3%	85.6%	84.5%	85.9%
	Quintile 5	92.4%	86.2%	87.6%	87.2%	86.8%	87.3%
Percentage point difference between offer rate and average offer rate	Quintile 1	-1.1	-2.9	-2.5	-2.9	-3.6	-4.6
	Quintile 2	-1.6	-0.6	-1.3	-0.5	-0.9	-1.1
	Quintile 3	-0.3	0.5	-0.3	-0.5	-1.1	0.1
	Quintile 4	0.3	-0.3	0.4	0.2	0.6	1.0
	Quintile 5	0.4	0.6	0.5	0.7	0.9	0.2
Contribution of group to the average offer rate	Quintile 1	0.148	0.153	0.144	0.154	0.155	0.149
	Quintile 2	0.171	0.155	0.168	0.161	0.173	0.166
	Quintile 3	0.224	0.210	0.212	0.214	0.221	0.212
	Quintile 4	0.349	0.345	0.345	0.342	0.352	0.363
	Quintile 5	0.458	0.447	0.437	0.439	0.422	0.431

P.9 18 year old offer rate by POLAR3 quintile

Note: The line for a group is not plotted when that group made fewer than 10 applications in any of the years from 2012-2017.

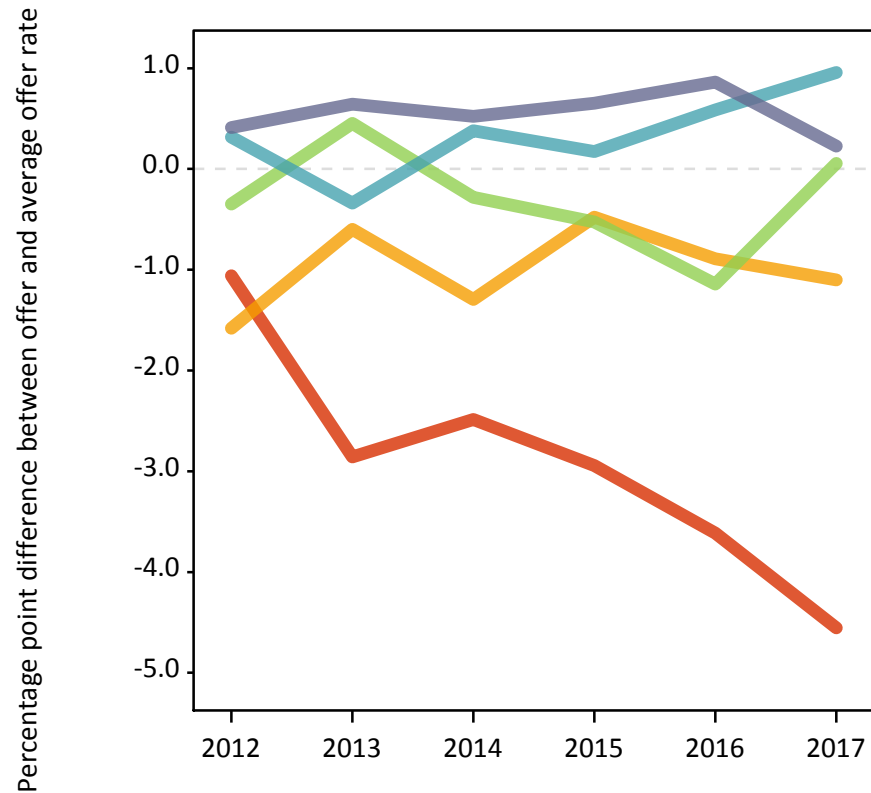
- Quintile 1
- Quintile 2
- Quintile 3
- Quintile 4
- Quintile 5



P.10 Percentage point difference between 18 year old offer rate and average offer rate by POLAR3 quintile

Note: The line for a group is not plotted when that group made fewer than 50 applications in any of the years from 2012-2017.

- Quintile 1
- Quintile 2
- Quintile 3
- Quintile 4
- Quintile 5



P.11 18 year old applicants by ethnic group

Statistic	Ethnic group	2012	2013	2014	2015	2016	2017
June deadline applicants	Asian	110	120	140	175	205	195
	Black	25	35	35	40	55	65
	Mixed	85	105	100	140	115	145
	White	7,790	8,420	8,435	8,685	8,420	8,375
	Other	15	20	25	25	20	30
Placed June deadline applicants	Asian	20	25	30	25	40	20
	Black	0	5	0	5	5	5
	Mixed	20	15	15	25	20	20
	White	2,540	2,790	2,640	2,485	2,405	2,390
	Other	0	0	5	5	0	0
All placed applicants	Asian	25	25	30	25	45	25
	Black	0	5	0	5	5	5
	Mixed	20	15	15	25	25	25
	White	2,670	2,900	2,760	2,590	2,540	2,540
	Other	0	0	5	5	0	5
June deadline applicants per 10,000 population	Asian	17.1	18.0	20.8	25.0	28.5	26.8
	Black	8.2	12.5	11.2	12.3	16.9	20.3
	Mixed	33.4	38.5	35.5	45.1	36.2	44.5
	White	120.7	133.8	136.7	139.4	139.2	141.1
	Other	17.0	23.2	24.7	24.9	19.1	31.1
Placed June deadline applicants per 10,000 population	Asian	3.4	3.5	4.1	3.5	5.3	3.0
	Black	0.0	2.0	0.0	0.9	1.0	1.6
	Mixed	6.9	5.9	5.6	8.1	7.0	6.5
	White	39.4	44.4	42.8	39.9	39.8	40.3
	Other	0.0	0.0	3.2	3.1	0.0	0.0
All placed applicants per 10,000 population	Asian	3.6	3.8	4.6	3.8	6.5	3.5
	Black	0.0	2.0	0.0	1.9	1.6	1.9
	Mixed	7.3	6.3	5.6	8.1	7.3	7.5
	White	41.3	46.1	44.7	41.6	42.0	42.8
	Other	0.0	0.0	3.2	3.1	0.0	2.9

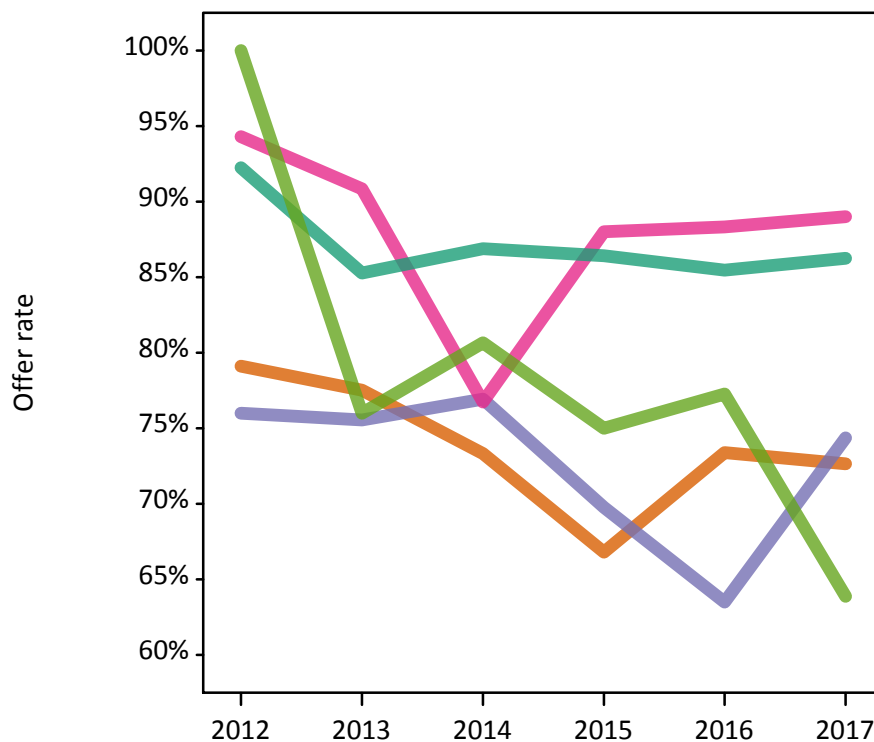
P.12 18 year old applications by ethnic group

Statistic	Ethnic group	2012	2013	2014	2015	2016	2017
June deadline applications	Asian	160	170	180	230	265	255
	Black	25	45	40	45	65	80
	Mixed	105	130	130	175	155	190
	White	13,745	15,240	15,175	15,450	14,830	14,680
	Other	20	25	30	30	20	35
Offers	Asian	125	130	130	155	195	185
	Black	20	35	30	30	40	60
	Mixed	100	120	100	155	135	170
	White	12,680	12,995	13,185	13,350	12,675	12,660
	Other	15	20	25	20	15	25
Offer rate	Asian	79.1%	77.5%	73.3%	66.8%	73.4%	72.7%
	Black	76.0%	75.6%	76.9%	69.8%	63.5%	74.4%
	Mixed	94.3%	90.8%	76.7%	88.0%	88.3%	89.0%
	White	92.2%	85.3%	86.9%	86.4%	85.5%	86.2%
	Other	100.0%	76.0%	80.6%	75.0%	77.3%	63.9%
Average offer rate	Asian	83.4%	79.1%	78.5%	73.2%	79.7%	78.4%
	Black	83.2%	79.5%	80.0%	67.0%	69.1%	80.8%
	Mixed	95.4%	92.0%	82.4%	89.0%	88.3%	89.7%
	White	92.2%	85.2%	86.7%	86.3%	85.3%	86.1%
	Other	87.4%	86.4%	87.2%	69.2%	77.7%	68.8%
Percentage point difference between offer rate and average offer rate	Asian	-4.3	-1.5	-5.2	-6.4	-6.3	-5.8
	Black	N/A	N/A	N/A	N/A	-5.7	-6.5
	Mixed	-1.1	-1.2	-5.7	-1.0	-0.0	-0.7
	White	0.1	0.1	0.1	0.1	0.2	0.2
	Other	N/A	N/A	N/A	N/A	N/A	N/A
Contribution of group to the average offer rate	Asian	0.116	0.106	0.086	0.102	0.113	0.134
	Black	0.171	0.212	0.120	0.221	0.104	0.143
	Mixed	0.112	0.098	0.093	0.097	0.085	0.096
	White	0.978	0.978	0.976	0.971	0.969	0.964
	Other	0.083	0.091	0.049	0.102	0.080	0.108

P.13 18 year old offer rate by ethnic group

Note: The line for a group is not plotted when that group made fewer than 10 applications in any of the years from 2012-2017.

- Asian
- Black
- Mixed
- White
- Other



P.14 Percentage point difference between 18 year old offer rate and average offer rate by ethnic group

Note: The line for a group is not plotted when that group made fewer than 50 applications in any of the years from 2012-2017.

- Asian
- Black
- Mixed
- White
- Other



P.15 Applicants (all ages)

Statistic	2012	2013	2014	2015	2016	2017
June deadline applicants	11,470	14,070	14,075	14,685	14,625	14,290
Placed June deadline applicants	3,530	4,075	3,995	3,810	3,840	3,825
All placed applicants	3,735	4,295	4,260	4,030	4,105	4,120

P.16 Applications (all ages)

Statistic	2012	2013	2014	2015	2016	2017
June deadline applications	19,595	25,250	25,050	25,800	25,770	25,035
Offers	16,465	17,880	18,190	18,695	18,520	18,440
Offer rate	84.0%	70.8%	72.6%	72.5%	71.9%	73.7%

P.17 Applicants (all ages) by sex

Statistic	Sex	2012	2013	2014	2015	2016	2017
June deadline applicants	Men	5,570	6,115	6,000	6,255	6,285	6,060
	Women	5,900	7,955	8,075	8,430	8,340	8,225
Placed June deadline applicants	Men	1,755	1,935	1,850	1,700	1,730	1,650
	Women	1,775	2,140	2,150	2,110	2,105	2,175
All placed applicants	Men	1,840	2,010	1,935	1,780	1,850	1,750
	Women	1,895	2,285	2,325	2,250	2,260	2,365

P.18 Applications (all ages) by sex

Statistic	Sex	2012	2013	2014	2015	2016	2017
June deadline applications	Men	10,275	11,405	11,190	11,270	11,455	10,905
	Women	9,320	13,845	13,860	14,530	14,315	14,130
Offers	Men	8,785	9,480	9,360	9,250	9,290	8,945
	Women	7,680	8,400	8,830	9,445	9,230	9,490
Offer rate	Men	85.5%	83.1%	83.7%	82.1%	81.1%	82.1%
	Women	82.4%	60.7%	63.7%	65.0%	64.5%	67.2%

P.19 Applicants (all ages) by POLAR3 quintile

Statistic	POLAR3 quintile	2012	2013	2014	2015	2016	2017
June deadline applicants	Quintile 1	835	1,085	1,115	1,140	1,175	1,145
	Quintile 2	1,180	1,490	1,605	1,635	1,725	1,615
	Quintile 3	1,775	2,260	2,210	2,330	2,430	2,265
	Quintile 4	3,240	3,955	4,015	4,240	4,100	4,160
	Quintile 5	4,415	5,250	5,100	5,320	5,170	5,065
Placed June deadline applicants	Quintile 1	220	260	260	245	275	295
	Quintile 2	325	405	390	370	420	395
	Quintile 3	540	610	645	615	615	570
	Quintile 4	1,005	1,185	1,140	1,145	1,100	1,160
	Quintile 5	1,435	1,605	1,550	1,430	1,420	1,395
All placed applicants	Quintile 1	230	280	280	265	300	315
	Quintile 2	340	425	425	390	450	420
	Quintile 3	575	645	685	650	660	605
	Quintile 4	1,070	1,245	1,215	1,210	1,175	1,250
	Quintile 5	1,515	1,685	1,645	1,510	1,515	1,515

P.20 Applications (all ages) by POLAR3 quintile

Statistic	POLAR3 quintile	2012	2013	2014	2015	2016	2017
June deadline applications	Quintile 1	1,405	2,070	2,085	1,980	2,165	2,060
	Quintile 2	1,965	2,685	2,875	2,820	3,015	2,800
	Quintile 3	3,095	4,105	3,900	4,110	4,305	3,915
	Quintile 4	5,585	7,105	7,225	7,530	7,275	7,420
	Quintile 5	7,505	9,230	8,925	9,315	8,955	8,775
Offers	Quintile 1	1,065	1,195	1,270	1,230	1,315	1,355
	Quintile 2	1,570	1,785	1,905	1,910	2,050	1,880
	Quintile 3	2,580	2,810	2,865	2,980	2,985	2,785
	Quintile 4	4,730	5,095	5,250	5,460	5,265	5,520
	Quintile 5	6,495	6,955	6,865	7,085	6,880	6,855
Offer rate	Quintile 1	75.9%	57.8%	61.0%	62.3%	60.6%	65.7%
	Quintile 2	79.9%	66.5%	66.4%	67.7%	67.9%	67.1%
	Quintile 3	83.2%	68.4%	73.5%	72.4%	69.3%	71.1%
	Quintile 4	84.7%	71.7%	72.7%	72.5%	72.4%	74.4%
	Quintile 5	86.5%	75.3%	76.9%	76.1%	76.9%	78.1%

P.21 Applicants (all ages) by ethnic group

Statistic	Ethnic group	2012	2013	2014	2015	2016	2017
June deadline applicants	Asian	225	260	300	405	405	380
	Black	75	105	120	125	155	145
	Mixed	140	160	170	220	190	210
	White	10,950	13,455	13,385	13,810	13,770	13,415
	Other	30	50	50	45	45	65
Placed June deadline applicants	Asian	45	45	50	55	70	50
	Black	10	15	10	10	15	15
	Mixed	30	30	25	35	30	35
	White	3,430	3,980	3,900	3,685	3,710	3,705
	Other	5	5	5	10	0	5
All placed applicants	Asian	50	50	60	60	85	60
	Black	15	15	10	15	20	15
	Mixed	35	30	30	35	35	40
	White	3,625	4,190	4,140	3,895	3,950	3,975
	Other	5	5	5	10	5	10

P.22 Applications (all ages) by ethnic group

Statistic	Ethnic group	2012	2013	2014	2015	2016	2017
June deadline applications	Asian	315	345	370	515	505	495
	Black	90	135	155	140	190	180
	Mixed	170	210	225	270	260	280
	White	18,915	24,440	24,160	24,705	24,675	23,895
	Other	35	65	70	55	60	80
Offers	Asian	220	215	215	285	310	300
	Black	45	60	65	50	85	85
	Mixed	140	170	150	210	195	220
	White	15,980	17,375	17,670	18,035	17,845	17,715
	Other	25	30	45	35	35	40
Offer rate	Asian	69.3%	63.0%	58.8%	55.2%	61.1%	60.3%
	Black	51.1%	45.9%	42.2%	37.0%	44.1%	48.3%
	Mixed	84.0%	81.8%	67.3%	76.5%	74.8%	77.9%
	White	84.5%	71.1%	73.1%	73.0%	72.3%	74.1%
	Other	66.7%	47.8%	63.2%	61.1%	58.6%	53.8%

Technical Notes and Definitions

UCAS undergraduate scheme

Adjustment

Adjustment allows applicants who have met and exceeded the terms of their conditional firm offer to seek and find a place at another provider whilst keeping their place at their original firm choice provider.

Clearing

Clearing is a route for applicants that are not placed and holding no offers to find a place on courses with vacancies.

Cycle year

The UCAS application cycle which runs from September to October the following year. For example the 2017 cycle runs from September 2016 through to October 2017.

End of cycle

The point in the cycle to which the numbers in this report refer, and the point at which the cycle is closed such that no more applications or offers can be made, and no more applicants can be placed. Numbers reported at the end of cycle exclude information on a small number of applicants who cancelled during the cycle.

Extra

Applicants who are unsuccessful in obtaining an offer or decline all offers may be eligible to apply through Extra, where they can apply to one further course at a time. Extra operates from 25 February until early July. It provides applicants who are eligible the possibility of obtaining an offer before exam results are published and Clearing starts.

June 30 deadline

The deadline for main scheme applications. Applicants who apply after this date will go directly into Clearing.

Record of Prior Acceptance (RPA)

RPA is an acceptance route used when a provider informs UCAS of applicants it has accepted outside of the normal application process (e.g. individuals who have applied directly to the provider).

Reporting groups

Ethnic group

High level grouping of ethnic origin as declared by the applicant: 'White', 'Black', 'Asian', 'Mixed', 'Other', 'Unknown'. Applicants who declare themselves as 'Unknown' ethnic origin are not reported in these tables, but are included in the associated csv data file.

POLAR3 quintile

Developed by HEFCE, POLAR3 classifies small areas across the UK into five groups according to their level of young participation in Higher Education. Each of these groups represents around 20 per cent of young people and is ranked from Quintile 1 (areas with the lowest young participation rates, considered as the most disadvantaged) to Quintile 5 (highest young participation rates, considered most advantaged). POLAR3 is based on the participation rates of young people between 2005 and 2009 who entered Higher Education between 2005-06 and 2010-11, therefore is most suitable for applicants aged 19 and under. These groups are assigned using the postcode declared by the applicant at the time of their application. If a UK postcode is invalid, considered unsafe for measurement or there is no link to Census geography possible then the applicant is not assigned to a quintile. Applicants with no POLAR3 quintile are not reported.

Sex

Sex as declared by the applicant.

SIMD 2016 quintile

Scottish index of multiple deprivation (SIMD) identifies small area concentrations of multiple deprivation across all of Scotland, providing a relative measure of deprivation amongst 6505 small areas (data zones) based on 7 socio-economic domains. These small areas are classified into five groups ranked from Quintile 1 (considered the most deprived) to Quintile 5 (considered least deprived), with equal populations in each quintile. Quintiles are assigned using the postcode declared by the applicant, applicants declaring invalid postcodes are classified as 'Not assigned' and are not reported.

SIMD is only defined for applicants domiciled in Scotland, therefore any applicants domiciled outside of Scotland cannot be assigned to an SIMD quintile and so are not reported for this measure.

SIMD is only reported for providers in Scotland. Application and entry rates by SIMD are reported in the 2017 End of Cycle Report and the 2017 cycle January deadline application rate report.

Statistics reported in the tables

All placed applicants

The number of applicants placed for entry into higher education at the provider through one of their choices, including any choices made through Extra, or via Adjustment, Clearing or RPA.

All placed applicants per 10,000 population

The number of total UK domiciled 18 year old placed applicants for entry into higher education at the provider divided by the number of UK 18 year olds in the population, multiplied by 10,000. This gives the number of 18 year olds, for every 10,000 in the population, that were placed at the provider through one of their choices, including any choices made through Extra, or via Adjustment, Clearing or RPA. It is an alternative way of expressing the entry rate to a provider. By referencing the underlying population this statistic shows how the number of placed applicants is changing in relation to the available pool of potential applicants and so gives the chance that somebody from the group will be placed at a provider.

This statistic is only reported for 18 year olds.

Average offer rate

The offer rate that you might expect if the predicted grades and subject choice of applicants were the only factors that influenced whether an applicant was made an offer by the provider. The average offer rate is calculated by dividing applicants according to their specific combination of grades (for A levels the best three predicted grades are used, for BTECs, International Baccalaureate and Scottish Highers and Advanced Highers, predicted grades along with any grades already achieved upon applying are used) and subject choice. For each combination the number of main scheme offers is divided by the number of main scheme applications, to give an overall offer rate. This is then multiplied by the number of applications made by the group for which the average offer rate is being calculated (for example POLAR3 quintile 1), to give an average number of offers for that group. These average number of offers are then added together across all combinations of predicted grade and subject and divided by the number of main scheme applications from the group to give the average offer rate.

The average offer rate does not attempt to control for any other factors that may play a part in the decision to make an offer, such as the subject of the qualifications studied, their relevance to a course, or the grade in each subject; higher numbers of A levels being studied; the exact profile of grades predicted; personal statements; teacher references; interviews; or any other criteria (such as work experience or portfolios) that may be part of the admissions decision.

This statistic is only reported for 18 year olds.

Contribution of group to the average offer rate

The way in which the average offer rate is defined means that the pattern of application and offers of a group (for example POLAR3 quintile 1) will always contribute, in part, to the average offer rate for that group. When this contribution is large, the average offer rate will mainly reflect the patterns for the group, meaning that the value of the average offer rate will be similar to the offer rate, the percentage point difference statistic will be small, and any real difference between the offer rate and what might be expected given the predicted grades and subject choices of the applicants will be difficult to detect.

Values of the contribution of group to the average offer rate range between 0 and 1. The closer the value is to 1 the greater the contribution a group makes to its own average offer rate.

This statistic is only reported for 18 year olds.

Placed June deadline applicants

An applicant who has been placed for entry into higher education at the provider through a June deadline application.

Placed June deadline applicants per 10,000 population

The number of UK domiciled 18 year old placed June deadline applicants at the provider divided by the number of UK 18 year olds in the population, multiplied by 10,000. This gives the number of 18 year olds, for every 10,000 in the population, that were placed at the provider through one of their June deadline applications. It is an alternative way of expressing the entry rate to a provider, but for placed June deadline applicants only. By referencing the underlying population this statistic shows how the number of placed June deadline applicants is changing in relation to the available pool of potential 18 year old applicants and so gives the chance that somebody from the group will be placed at a provider through a June deadline application.

This statistic is only reported for 18 year olds.

June deadline applications

An application (or choice) to a course in higher education to the provider that is made by the June 30 deadline. Each applicant can make up to five choices this way. The number of June deadline applications does not include choices made through the following routes: Clearing, Extra, Adjustment and RPAs. Applications made to October deadline courses received after the October deadline are not included in these statistics.

June deadline applicants

The number of applicants that made at least one application to the provider by the June 30 deadline.

June deadline applicants per 10,000 population

The number of UK domiciled 18 year old June deadline applicants to the provider divided by the number of UK 18 year olds in the population, multiplied by 10,000. This gives the number of 18 year olds, for every 10,000 in the population, who applied by the June 30 deadline. It is equivalent to the application rate. By referencing the underlying population this statistic shows how the number of June deadline applicants is changing in relation to the available pool of potential 18 year old applicants and so gives the chance that somebody from the group will apply to a provider by the June 30 deadline.

This statistic is only reported for 18 year olds.

Offers

An offer is defined as a provider's decision in response to an application to offer a place to an applicant, often subject to the applicant satisfying academic and/or other criteria, via a June deadline application (i.e. does not cover choices made through the following routes: Clearing, Extra, Adjustment and RPAs).

Offer rate

The number of offers made divided by the number of June deadline applications. This gives the proportion of all June deadline applications to the provider that received an offer.

Percentage point difference between offer rate and average offer rate

The offer rate minus the average offer rate.

The percentage point difference can be compared to the expected range of statistical variation resulting from the calculation of the average offer rate using the Average Offer Rate Lookup Table. Where the value of the percentage point difference lies outside of this range, the percentage point difference may be considered to represent a real difference between the offer rate and the average offer rate.

Other definitions

Age

This analysis uses country-specific age definitions that align with the cut off points for school and college cohorts within the different administrations of the UK. For England and Wales, ages are defined on the 31 August, for Northern Ireland on the 1 July and for Scotland on the 28 February the following year. Defining ages in this way matches the assignment of children to school cohorts. For applicants outside of the UK a cohort cut off of 31 August has been used. Numbers for applicants aged 17 and under are included in the tables that report numbers for all age groups. Providers in Scotland typically receive a higher proportion of applicants aged 17 and under compared to providers elsewhere in the UK.

Provider

A higher education provider - a university or college.

UK domiciled

Declared area of permanent residence within England, Northern Ireland, Scotland and Wales. Applicants from the Channel Islands and Isle of Man are not included.