

P63 Plymouth Marjon University (St Mark & St John)

Cycle years: 2012 - 2017

Cycle Reference Point: End of Cycle

Applicant coverage: UK domiciled

Reporting groups: Sex, POLAR3, ethnic group

Applicant statistics: June deadline applicants, placed June deadline applicants, all placed applicants, June deadline applicants per 10,000 population, placed June deadline applicants per 10,000 population, all placed applicants per 10,000 population

Application statistics: June deadline applications, offers, offer rate, average offer rate, percentage point difference between offer rate and average offer rate, contribution of group to the average offer rate

Non-disclosure controls: To avoid the disclosure of information about any individual the following measures are taken

- Applicants, placed applicants, applications and offers are rounded to the nearest 5.
- Applicants/placed applicants per 10,000 population figures are reported as 0 if the applicant/placed applicant figures are rounded to 0.
- All statistics related to the offer rate are not reported when the number of applications for a group is less than 10. The percentage point difference between the offer rate and the average offer rate is not reported when the number of applications for a group is less than 50.
- Offer rates are reported as 0% if there are fewer than 5 offers, and 100% if the number of offers is within 5 of the number of applications. When the offer rate is reported as 0% or 100%, it is reported in italics.

Contents:

18 year old applicants:	P.1
18 year old applications:	P.2
18 year old applicants by sex:	P.3
18 year old applications by sex:	P.4
18 year old applicants by POLAR3 quintile:	P.7
18 year old applications by POLAR3 quintile:	P.8
18 year old applicants by ethnic group:	P.11
18 year old applications by ethnic group:	P.12
Applicants (all ages):	P.15
Applications (all ages):	P.16
Applicants (all ages) by sex:	P.17
Applications (all ages) by sex:	P.18
Applicants (all ages) by POLAR3 quintile:	P.19
Applications (all ages) by POLAR3 quintile:	P.20
Applicants (all ages) by ethnic group:	P.21
Applications (all ages) by ethnic group:	P.22

P.1 18 year old applicants

Statistic	2012	2013	2014	2015	2016	2017
June deadline applicants	1,480	1,415	1,225	950	925	830
Placed June deadline applicants	340	345	295	250	255	245
All placed applicants	390	370	315	275	275	260
June deadline applicants per 10,000 population	19.2	18.6	16.2	12.4	12.3	11.2
Placed June deadline applicants per 10,000	4.4	4.5	3.9	3.3	3.4	3.3
All placed applicants per 10,000 population	5.0	4.8	4.2	3.6	3.7	3.5

P.2 18 year old applications

Statistic	2012	2013	2014	2015	2016	2017
June deadline applications	1,765	1,735	1,530	1,215	1,115	995
Offers	1,210	1,465	1,365	1,070	965	885
Offer rate	68.7%	84.4%	89.2%	88.2%	86.5%	89.0%

P.3 18 year old applicants by sex

Statistic	Sex	2012	2013	2014	2015	2016	2017
June deadline applicants	Men	575	545	515	405	395	375
	Women	905	870	705	545	525	455
Placed June deadline applicants	Men	130	140	130	100	110	130
	Women	210	205	165	150	145	115
All placed applicants	Men	140	150	140	110	115	135
	Women	245	215	180	165	160	125
June deadline applicants per 10,000 population	Men	14.5	13.9	13.3	10.3	10.3	9.9
	Women	24.0	23.5	19.3	14.6	14.4	12.6
Placed June deadline applicants per 10,000 population	Men	3.3	3.6	3.4	2.6	2.8	3.4
	Women	5.6	5.6	4.5	4.0	4.0	3.2
All placed applicants per 10,000 population	Men	3.6	3.9	3.6	2.9	3.0	3.5
	Women	6.5	5.9	4.9	4.4	4.4	3.5

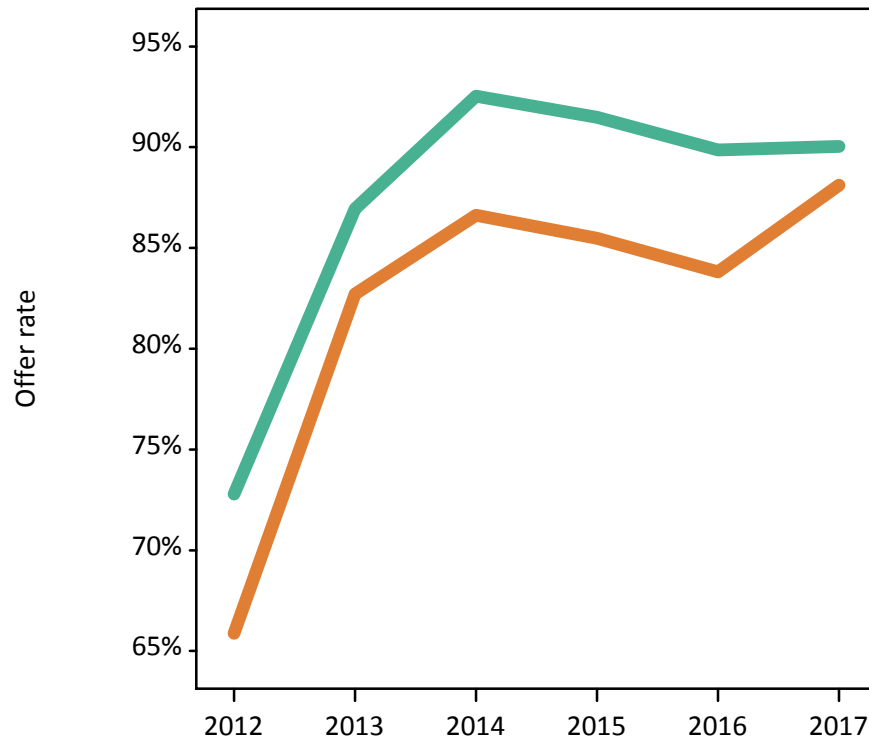
P.4 18 year old applications by sex

Statistic	Sex	2012	2013	2014	2015	2016	2017
June deadline applications	Men	715	695	670	550	495	470
	Women	1,050	1,035	860	660	625	520
Offers	Men	520	605	620	505	445	425
	Women	695	855	745	565	525	460
Offer rate	Men	72.8%	86.9%	92.5%	91.5%	89.9%	90.0%
	Women	65.9%	82.7%	86.6%	85.5%	83.8%	88.1%
Average offer rate	Men	73.4%	88.2%	92.8%	90.5%	88.9%	89.4%
	Women	65.5%	81.8%	86.4%	86.3%	84.6%	88.7%
Percentage point difference between offer rate and average offer rate	Men	-0.6	-1.3	-0.3	1.0	1.0	0.6
	Women	0.4	0.9	0.2	-0.8	-0.8	-0.6
Contribution of group to the average offer rate	Men	0.594	0.594	0.638	0.654	0.655	0.704
	Women	0.725	0.727	0.718	0.711	0.728	0.733

P.5 18 year old offer rate by sex

Note: The line for a group is not plotted when that group made fewer than 10 applications in any of the years from 2012-2017.

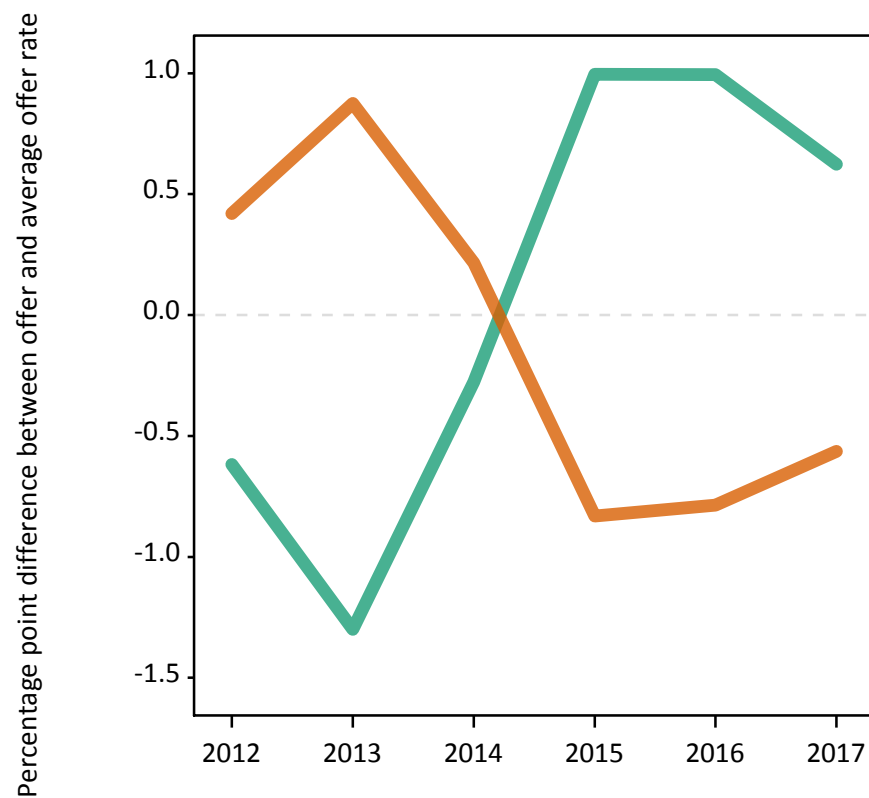
Men
Women



P.6 Percentage point difference between 18 year old offer rate and average offer rate by sex

Note: The line for a group is not plotted when that group made fewer than 50 applications in any of the years from 2012-2017.

Men
Women



P.7 18 year old applicants by POLAR3 quintile

Statistic	POLAR3 quintile	2012	2013	2014	2015	2016	2017
June deadline applicants	Quintile 1	215	235	220	165	160	145
	Quintile 2	305	290	285	195	190	180
	Quintile 3	345	325	265	215	240	180
	Quintile 4	370	330	275	235	215	175
	Quintile 5	250	230	175	135	125	145
Placed June deadline applicants	Quintile 1	50	70	60	40	45	55
	Quintile 2	70	80	70	55	50	55
	Quintile 3	85	80	60	70	70	50
	Quintile 4	85	75	70	65	65	50
	Quintile 5	50	40	40	25	25	35
All placed applicants	Quintile 1	60	70	60	45	45	60
	Quintile 2	75	85	75	60	55	55
	Quintile 3	90	80	65	75	80	60
	Quintile 4	100	85	80	70	65	50
	Quintile 5	60	45	40	30	30	40
June deadline applicants per 10,000 population	Quintile 1	15.2	16.8	15.7	11.9	11.7	10.8
	Quintile 2	20.3	19.5	19.5	13.0	13.2	12.8
	Quintile 3	22.2	21.4	17.7	14.1	15.8	12.2
	Quintile 4	23.2	21.2	17.9	15.0	13.8	11.5
	Quintile 5	14.8	14.0	10.8	8.2	7.4	8.7
Placed June deadline applicants per 10,000 population	Quintile 1	3.6	5.0	4.2	2.8	3.2	4.1
	Quintile 2	4.7	5.3	4.7	3.6	3.6	3.9
	Quintile 3	5.4	5.3	3.9	4.6	4.8	3.4
	Quintile 4	5.4	4.9	4.7	4.1	4.1	3.3
	Quintile 5	2.9	2.5	2.4	1.4	1.5	2.3
All placed applicants per 10,000 population	Quintile 1	4.2	5.2	4.5	3.1	3.4	4.5
	Quintile 2	5.1	5.7	5.0	3.9	3.9	3.9
	Quintile 3	5.8	5.3	4.2	4.8	5.2	3.9
	Quintile 4	6.4	5.3	5.1	4.5	4.3	3.3
	Quintile 5	3.5	2.8	2.5	1.8	1.8	2.3

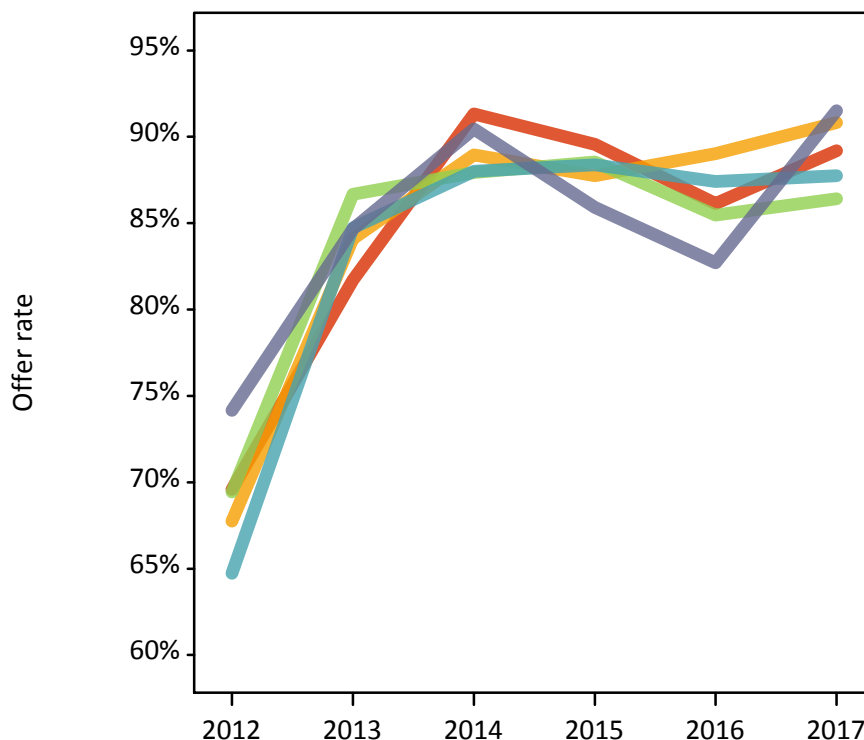
P.8 18 year old applications by POLAR3 quintile

Statistic	POLAR3 quintile	2012	2013	2014	2015	2016	2017
June deadline applications	Quintile 1	295	315	310	230	200	185
	Quintile 2	370	350	370	260	235	220
	Quintile 3	395	405	325	290	280	230
	Quintile 4	430	395	325	285	260	205
	Quintile 5	270	260	200	150	135	155
Offers	Quintile 1	205	260	285	205	175	165
	Quintile 2	250	295	330	230	210	200
	Quintile 3	275	350	285	255	240	195
	Quintile 4	280	335	285	250	230	180
	Quintile 5	200	220	180	130	110	140
Offer rate	Quintile 1	69.6%	81.7%	91.3%	89.6%	86.1%	89.2%
	Quintile 2	67.8%	84.1%	88.9%	87.7%	89.0%	90.8%
	Quintile 3	69.4%	86.7%	87.9%	88.5%	85.5%	86.4%
	Quintile 4	64.7%	84.7%	88.0%	88.4%	87.4%	87.7%
	Quintile 5	74.2%	84.7%	90.5%	85.9%	82.7%	91.5%
Average offer rate	Quintile 1	71.1%	84.8%	89.7%	89.3%	86.9%	88.4%
	Quintile 2	69.3%	84.7%	89.5%	89.2%	88.4%	88.9%
	Quintile 3	67.2%	83.3%	90.8%	88.0%	85.5%	88.1%
	Quintile 4	67.2%	84.6%	87.2%	87.0%	85.9%	88.9%
	Quintile 5	69.6%	85.4%	88.4%	87.2%	85.5%	91.1%
Percentage point difference between offer rate and average offer rate	Quintile 1	-1.5	-3.0	1.6	0.2	-0.7	0.8
	Quintile 2	-1.6	-0.6	-0.6	-1.4	0.7	2.0
	Quintile 3	2.2	3.3	-2.9	0.5	-0.1	-1.7
	Quintile 4	-2.5	0.1	0.8	1.3	1.5	-1.2
	Quintile 5	4.6	-0.8	2.1	-1.3	-2.8	0.4
Contribution of group to the average offer rate	Quintile 1	0.265	0.294	0.315	0.301	0.305	0.329
	Quintile 2	0.305	0.291	0.352	0.306	0.347	0.341
	Quintile 3	0.317	0.343	0.324	0.335	0.352	0.372
	Quintile 4	0.328	0.324	0.327	0.356	0.349	0.330
	Quintile 5	0.272	0.278	0.270	0.315	0.272	0.386

P.9 18 year old offer rate by POLAR3 quintile

Note: The line for a group is not plotted when that group made fewer than 10 applications in any of the years from 2012-2017.

- Quintile 1
- Quintile 2
- Quintile 3
- Quintile 4
- Quintile 5



P.10 Percentage point difference between 18 year old offer rate and average offer rate by POLAR3 quintile

Note: The line for a group is not plotted when that group made fewer than 50 applications in any of the years from 2012-2017.

- Quintile 1
- Quintile 2
- Quintile 3
- Quintile 4
- Quintile 5



P.11 18 year old applicants by ethnic group

Statistic	Ethnic group	2012	2013	2014	2015	2016	2017
June deadline applicants	Asian	15	10	10	10	10	10
	Black	10	15	10	10	5	5
	Mixed	15	25	20	10	15	20
	White	1,430	1,355	1,180	915	890	795
	Other	0	0	0	0	0	0
Placed June deadline applicants	Asian	0	0	0	0	5	0
	Black	0	0	5	0	0	0
	Mixed	5	5	5	5	0	10
	White	335	335	285	245	245	235
	Other	0	0	0	0	0	0
All placed applicants	Asian	0	0	0	0	5	0
	Black	0	0	5	0	5	0
	Mixed	5	5	5	5	0	10
	White	380	360	305	270	265	250
	Other	0	0	0	0	0	0
June deadline applicants per 10,000 population	Asian	2.5	1.5	1.3	1.1	1.4	1.2
	Black	4.3	5.4	3.6	3.1	2.2	1.6
	Mixed	6.5	10.0	7.3	3.9	4.8	5.6
	White	22.2	21.6	19.1	14.7	14.7	13.4
	Other	0.0	0.0	0.0	0.0	0.0	0.0
Placed June deadline applicants per 10,000 population	Asian	0.0	0.0	0.0	0.0	0.7	0.0
	Black	0.0	0.0	1.3	0.0	0.0	0.0
	Mixed	1.2	1.8	1.7	1.0	0.0	2.5
	White	5.2	5.4	4.6	3.9	4.1	3.9
	Other	0.0	0.0	0.0	0.0	0.0	0.0
All placed applicants per 10,000 population	Asian	0.0	0.0	0.0	0.0	0.7	0.0
	Black	0.0	0.0	1.3	0.0	1.3	0.0
	Mixed	1.9	1.8	2.1	1.3	0.0	2.5
	White	5.9	5.7	4.9	4.3	4.3	4.2
	Other	0.0	0.0	0.0	0.0	0.0	0.0

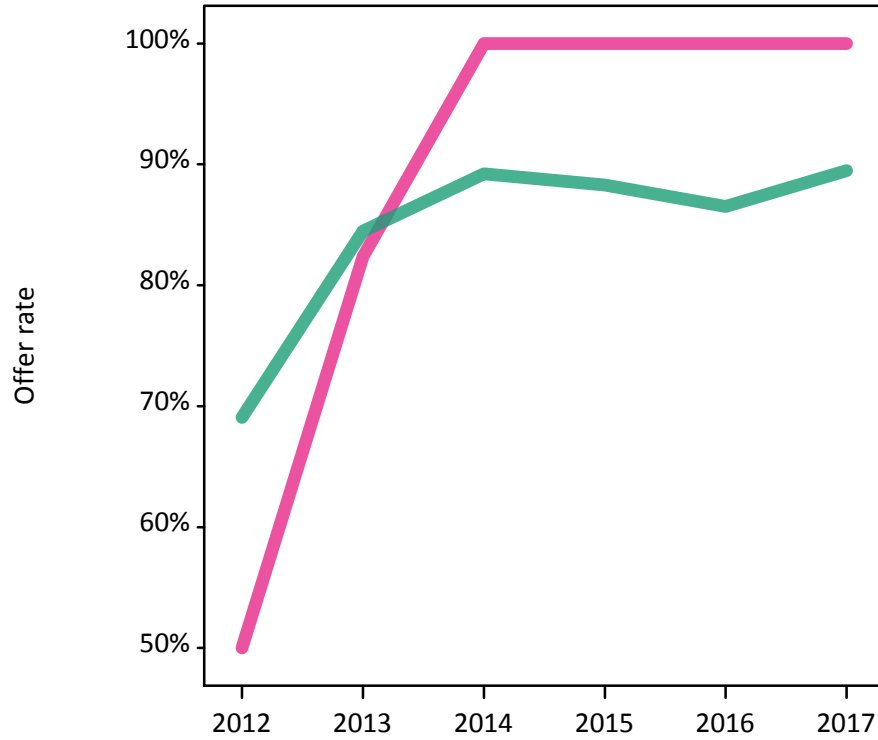
P.12 18 year old applications by ethnic group

Statistic	Ethnic group	2012	2013	2014	2015	2016	2017
June deadline applications	Asian	15	15	10	10	10	10
	Black	15	15	10	15	5	5
	Mixed	20	35	20	15	15	20
	White	1,710	1,660	1,485	1,170	1,085	950
	Other	0	0	0	5	0	0
Offers	Asian	10	15	10	5	5	5
	Black	10	15	10	10	5	5
	Mixed	10	30	20	10	15	15
	White	1,180	1,405	1,325	1,035	935	850
	Other	0	0	0	5	0	0
Offer rate	Asian	50.0%	100.0%	100.0%	N/A	100.0%	N/A
	Black	100.0%	100.0%	100.0%	100.0%	N/A	N/A
	Mixed	50.0%	82.4%	100.0%	100.0%	100.0%	100.0%
	White	69.1%	84.5%	89.2%	88.3%	86.5%	89.5%
	Other	N/A	N/A	N/A	N/A	N/A	N/A
Average offer rate	Asian	61.2%	85.9%	97.9%	N/A	80.5%	N/A
	Black	76.4%	84.7%	77.1%	90.7%	N/A	N/A
	Mixed	64.8%	81.9%	94.6%	80.8%	90.2%	88.8%
	White	68.7%	84.4%	89.2%	88.2%	86.5%	89.1%
	Other	N/A	N/A	N/A	N/A	N/A	N/A
Percentage point difference between offer rate and average offer rate	Asian	N/A	N/A	N/A	N/A	N/A	N/A
	Black	N/A	N/A	N/A	N/A	N/A	N/A
	Mixed	N/A	N/A	N/A	N/A	N/A	N/A
	White	0.3	0.1	0.0	0.1	0.0	0.3
	Other	N/A	N/A	N/A	N/A	N/A	N/A
Contribution of group to the average offer rate	Asian	0.142	0.060	0.161	N/A	0.088	N/A
	Black	0.217	0.062	0.079	0.063	N/A	N/A
	Mixed	0.104	0.222	0.247	0.163	0.196	0.373
	White	0.973	0.964	0.975	0.969	0.974	0.969
	Other	N/A	N/A	N/A	N/A	N/A	N/A

P.13 18 year old offer rate by ethnic group

Note: The line for a group is not plotted when that group made fewer than 10 applications in any of the years from 2012-2017.

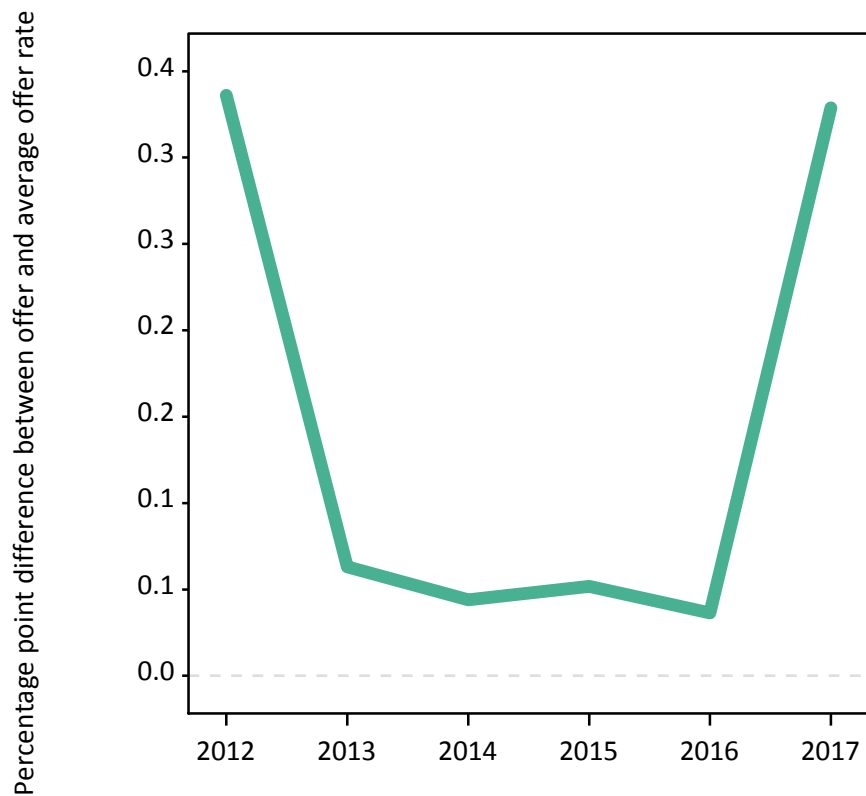
- Asian
- Black
- Mixed
- White
- Other



P.14 Percentage point difference between 18 year old offer rate and average offer rate by ethnic group

Note: The line for a group is not plotted when that group made fewer than 50 applications in any of the years from 2012-2017.

- Asian
- Black
- Mixed
- White
- Other



P.15 Applicants (all ages)

Statistic	2012	2013	2014	2015	2016	2017
June deadline applicants	2,715	2,665	2,370	2,020	1,875	1,845
Placed June deadline applicants	700	765	705	695	670	690
All placed applicants	785	805	760	760	720	735

P.16 Applications (all ages)

Statistic	2012	2013	2014	2015	2016	2017
June deadline applications	3,285	3,270	3,010	2,640	2,265	2,235
Offers	2,225	2,665	2,640	2,275	1,895	1,895
Offer rate	67.7%	81.6%	87.7%	86.2%	83.7%	84.9%

P.17 Applicants (all ages) by sex

Statistic	Sex	2012	2013	2014	2015	2016	2017
June deadline applicants	Men	1,150	1,115	1,075	1,005	940	975
	Women	1,565	1,550	1,295	1,010	935	870
Placed June deadline applicants	Men	285	335	330	350	355	425
	Women	415	430	370	345	315	265
All placed applicants	Men	315	350	360	375	380	445
	Women	470	450	400	385	340	290

P.18 Applications (all ages) by sex

Statistic	Sex	2012	2013	2014	2015	2016	2017
June deadline applications	Men	1,435	1,425	1,390	1,335	1,155	1,220
	Women	1,855	1,845	1,620	1,305	1,110	1,015
Offers	Men	1,005	1,175	1,235	1,160	975	1,025
	Women	1,220	1,490	1,405	1,115	920	870
Offer rate	Men	70.1%	82.6%	88.9%	87.0%	84.3%	84.2%
	Women	65.7%	80.7%	86.6%	85.4%	83.1%	85.6%

P.19 Applicants (all ages) by POLAR3 quintile

Statistic	POLAR3 quintile	2012	2013	2014	2015	2016	2017
June deadline applicants	Quintile 1	475	470	450	365	335	370
	Quintile 2	575	565	515	435	405	400
	Quintile 3	620	605	505	455	440	425
	Quintile 4	635	615	535	455	415	370
	Quintile 5	410	395	360	300	275	270
Placed June deadline applicants	Quintile 1	135	155	145	130	130	165
	Quintile 2	135	170	160	150	150	145
	Quintile 3	175	170	140	175	165	150
	Quintile 4	165	175	165	155	150	135
	Quintile 5	90	90	95	80	75	95
All placed applicants	Quintile 1	150	160	160	145	135	175
	Quintile 2	150	180	175	165	160	155
	Quintile 3	190	175	150	185	180	165
	Quintile 4	190	190	170	170	155	140
	Quintile 5	110	100	105	95	85	100

P.20 Applications (all ages) by POLAR3 quintile

Statistic	POLAR3 quintile	2012	2013	2014	2015	2016	2017
June deadline applications	Quintile 1	630	625	630	510	425	480
	Quintile 2	695	695	685	585	505	475
	Quintile 3	740	755	630	620	520	530
	Quintile 4	765	750	650	570	505	440
	Quintile 5	450	440	410	350	300	300
Offers	Quintile 1	430	490	555	440	365	410
	Quintile 2	465	570	615	500	435	420
	Quintile 3	505	625	555	540	435	440
	Quintile 4	500	610	565	495	430	365
	Quintile 5	320	370	350	295	230	255
Offer rate	Quintile 1	67.8%	78.7%	87.9%	86.4%	86.1%	85.3%
	Quintile 2	67.0%	81.6%	89.5%	85.2%	85.9%	87.6%
	Quintile 3	68.3%	82.9%	87.5%	87.0%	83.0%	82.8%
	Quintile 4	65.4%	81.7%	87.0%	87.5%	84.8%	83.2%
	Quintile 5	71.4%	83.3%	85.4%	84.5%	76.1%	85.9%

P.21 Applicants (all ages) by ethnic group

Statistic	Ethnic group	2012	2013	2014	2015	2016	2017
June deadline applicants	Asian	25	20	15	15	20	20
	Black	35	45	40	25	25	20
	Mixed	50	50	45	40	45	45
	White	2,590	2,530	2,255	1,920	1,770	1,740
	Other	5	5	5	5	5	5
Placed June deadline applicants	Asian	0	5	5	5	5	0
	Black	0	5	10	5	10	5
	Mixed	10	15	15	10	15	20
	White	680	740	670	670	635	655
	Other	0	0	0	0	0	5
All placed applicants	Asian	0	5	5	5	10	5
	Black	5	5	10	5	15	5
	Mixed	15	15	20	15	15	20
	White	760	775	720	730	680	695
	Other	0	0	0	0	0	5

P.22 Applications (all ages) by ethnic group

Statistic	Ethnic group	2012	2013	2014	2015	2016	2017
June deadline applications	Asian	25	30	20	15	25	20
	Black	40	45	40	30	30	20
	Mixed	60	60	55	45	50	50
	White	3,150	3,120	2,875	2,525	2,150	2,120
	Other	5	10	10	10	5	5
Offers	Asian	10	20	15	15	20	15
	Black	25	35	30	25	25	10
	Mixed	35	50	45	35	45	45
	White	2,145	2,545	2,525	2,180	1,795	1,805
	Other	5	10	5	5	5	5
Offer rate	Asian	40.7%	75.9%	100.0%	100.0%	75.0%	71.4%
	Black	64.1%	82.2%	82.1%	80.6%	100.0%	63.2%
	Mixed	58.6%	84.5%	81.8%	75.6%	100.0%	100.0%
	White	68.2%	81.6%	87.8%	86.5%	83.6%	85.0%
	Other	N/A	N/A	N/A	N/A	N/A	N/A

Technical Notes and Definitions

UCAS undergraduate scheme

Adjustment

Adjustment allows applicants who have met and exceeded the terms of their conditional firm offer to seek and find a place at another provider whilst keeping their place at their original firm choice provider.

Clearing

Clearing is a route for applicants that are not placed and holding no offers to find a place on courses with vacancies.

Cycle year

The UCAS application cycle which runs from September to October the following year. For example the 2017 cycle runs from September 2016 through to October 2017.

End of cycle

The point in the cycle to which the numbers in this report refer, and the point at which the cycle is closed such that no more applications or offers can be made, and no more applicants can be placed. Numbers reported at the end of cycle exclude information on a small number of applicants who cancelled during the cycle.

Extra

Applicants who are unsuccessful in obtaining an offer or decline all offers may be eligible to apply through Extra, where they can apply to one further course at a time. Extra operates from 25 February until early July. It provides applicants who are eligible the possibility of obtaining an offer before exam results are published and Clearing starts.

June 30 deadline

The deadline for main scheme applications. Applicants who apply after this date will go directly into Clearing.

Record of Prior Acceptance (RPA)

RPA is an acceptance route used when a provider informs UCAS of applicants it has accepted outside of the normal application process (e.g. individuals who have applied directly to the provider).

Reporting groups

Ethnic group

High level grouping of ethnic origin as declared by the applicant: 'White', 'Black', 'Asian', 'Mixed', 'Other', 'Unknown'. Applicants who declare themselves as 'Unknown' ethnic origin are not reported in these tables, but are included in the associated csv data file.

POLAR3 quintile

Developed by HEFCE, POLAR3 classifies small areas across the UK into five groups according to their level of young participation in Higher Education. Each of these groups represents around 20 per cent of young people and is ranked from Quintile 1 (areas with the lowest young participation rates, considered as the most disadvantaged) to Quintile 5 (highest young participation rates, considered most advantaged). POLAR3 is based on the participation rates of young people between 2005 and 2009 who entered Higher Education between 2005-06 and 2010-11, therefore is most suitable for applicants aged 19 and under. These groups are assigned using the postcode declared by the applicant at the time of their application. If a UK postcode is invalid, considered unsafe for measurement or there is no link to Census geography possible then the applicant is not assigned to a quintile. Applicants with no POLAR3 quintile are not reported.

Sex

Sex as declared by the applicant.

SIMD 2016 quintile

Scottish index of multiple deprivation (SIMD) identifies small area concentrations of multiple deprivation across all of Scotland, providing a relative measure of deprivation amongst 6505 small areas (data zones) based on 7 socio-economic domains. These small areas are classified into five groups ranked from Quintile 1 (considered the most deprived) to Quintile 5 (considered least deprived), with equal populations in each quintile. Quintiles are assigned using the postcode declared by the applicant, applicants declaring invalid postcodes are classified as 'Not assigned' and are not reported.

SIMD is only defined for applicants domiciled in Scotland, therefore any applicants domiciled outside of Scotland cannot be assigned to an SIMD quintile and so are not reported for this measure.

SIMD is only reported for providers in Scotland. Application and entry rates by SIMD are reported in the 2017 End of Cycle Report and the 2017 cycle January deadline application rate report.

Statistics reported in the tables

All placed applicants

The number of applicants placed for entry into higher education at the provider through one of their choices, including any choices made through Extra, or via Adjustment, Clearing or RPA.

All placed applicants per 10,000 population

The number of total UK domiciled 18 year old placed applicants for entry into higher education at the provider divided by the number of UK 18 year olds in the population, multiplied by 10,000. This gives the number of 18 year olds, for every 10,000 in the population, that were placed at the provider through one of their choices, including any choices made through Extra, or via Adjustment, Clearing or RPA. It is an alternative way of expressing the entry rate to a provider. By referencing the underlying population this statistic shows how the number of placed applicants is changing in relation to the available pool of potential applicants and so gives the chance that somebody from the group will be placed at a provider.

This statistic is only reported for 18 year olds.

Average offer rate

The offer rate that you might expect if the predicted grades and subject choice of applicants were the only factors that influenced whether an applicant was made an offer by the provider. The average offer rate is calculated by dividing applicants according to their specific combination of grades (for A levels the best three predicted grades are used, for BTECs, International Baccalaureate and Scottish Highers and Advanced Highers, predicted grades along with any grades already achieved upon applying are used) and subject choice. For each combination the number of main scheme offers is divided by the number of main scheme applications, to give an overall offer rate. This is then multiplied by the number of applications made by the group for which the average offer rate is being calculated (for example POLAR3 quintile 1), to give an average number of offers for that group. These average number of offers are then added together across all combinations of predicted grade and subject and divided by the number of main scheme applications from the group to give the average offer rate.

The average offer rate does not attempt to control for any other factors that may play a part in the decision to make an offer, such as the subject of the qualifications studied, their relevance to a course, or the grade in each subject; higher numbers of A levels being studied; the exact profile of grades predicted; personal statements; teacher references; interviews; or any other criteria (such as work experience or portfolios) that may be part of the admissions decision.

This statistic is only reported for 18 year olds.

Contribution of group to the average offer rate

The way in which the average offer rate is defined means that the pattern of application and offers of a group (for example POLAR3 quintile 1) will always contribute, in part, to the average offer rate for that group. When this contribution is large, the average offer rate will mainly reflect the patterns for the group, meaning that the value of the average offer rate will be similar to the offer rate, the percentage point difference statistic will be small, and any real difference between the offer rate and what might be expected given the predicted grades and subject choices of the applicants will be difficult to detect.

Values of the contribution of group to the average offer rate range between 0 and 1. The closer the value is to 1 the greater the contribution a group makes to its own average offer rate.

This statistic is only reported for 18 year olds.

Placed June deadline applicants

An applicant who has been placed for entry into higher education at the provider through a June deadline application.

Placed June deadline applicants per 10,000 population

The number of UK domiciled 18 year old placed June deadline applicants at the provider divided by the number of UK 18 year olds in the population, multiplied by 10,000. This gives the number of 18 year olds, for every 10,000 in the population, that were placed at the provider through one of their June deadline applications. It is an alternative way of expressing the entry rate to a provider, but for placed June deadline applicants only. By referencing the underlying population this statistic shows how the number of placed June deadline applicants is changing in relation to the available pool of potential 18 year old applicants and so gives the chance that somebody from the group will be placed at a provider through a June deadline application.

This statistic is only reported for 18 year olds.

June deadline applications

An application (or choice) to a course in higher education to the provider that is made by the June 30 deadline. Each applicant can make up to five choices this way. The number of June deadline applications does not include choices made through the following routes: Clearing, Extra, Adjustment and RPAs. Applications made to October deadline courses received after the October deadline are not included in these statistics.

June deadline applicants

The number of applicants that made at least one application to the provider by the June 30 deadline.

June deadline applicants per 10,000 population

The number of UK domiciled 18 year old June deadline applicants to the provider divided by the number of UK 18 year olds in the population, multiplied by 10,000. This gives the number of 18 year olds, for every 10,000 in the population, who applied by the June 30 deadline. It is equivalent to the application rate. By referencing the underlying population this statistic shows how the number of June deadline applicants is changing in relation to the available pool of potential 18 year old applicants and so gives the chance that somebody from the group will apply to a provider by the June 30 deadline.

This statistic is only reported for 18 year olds.

Offers

An offer is defined as a provider's decision in response to an application to offer a place to an applicant, often subject to the applicant satisfying academic and/or other criteria, via a June deadline application (i.e. does not cover choices made through the following routes: Clearing, Extra, Adjustment and RPAs).

Offer rate

The number of offers made divided by the number of June deadline applications. This gives the proportion of all June deadline applications to the provider that received an offer.

Percentage point difference between offer rate and average offer rate

The offer rate minus the average offer rate.

The percentage point difference can be compared to the expected range of statistical variation resulting from the calculation of the average offer rate using the Average Offer Rate Lookup Table. Where the value of the percentage point difference lies outside of this range, the percentage point difference may be considered to represent a real difference between the offer rate and the average offer rate.

Other definitions

Age

This analysis uses country-specific age definitions that align with the cut off points for school and college cohorts within the different administrations of the UK. For England and Wales, ages are defined on the 31 August, for Northern Ireland on the 1 July and for Scotland on the 28 February the following year. Defining ages in this way matches the assignment of children to school cohorts. For applicants outside of the UK a cohort cut off of 31 August has been used. Numbers for applicants aged 17 and under are included in the tables that report numbers for all age groups. Providers in Scotland typically receive a higher proportion of applicants aged 17 and under compared to providers elsewhere in the UK.

Provider

A higher education provider - a university or college.

UK domiciled

Declared area of permanent residence within England, Northern Ireland, Scotland and Wales. Applicants from the Channel Islands and Isle of Man are not included.