

N84 The University of Nottingham

Cycle years: 2012 - 2017

Cycle Reference Point: End of Cycle

Applicant coverage: UK domiciled

Reporting groups: Sex, POLAR3, ethnic group

Applicant statistics: June deadline applicants, placed June deadline applicants, all placed applicants, June deadline applicants per 10,000 population, placed June deadline applicants per 10,000 population, all placed applicants per 10,000 population

Application statistics: June deadline applications, offers, offer rate, average offer rate, percentage point difference between offer rate and average offer rate, contribution of group to the average offer rate

Non-disclosure controls: To avoid the disclosure of information about any individual the following measures are taken

- Applicants, placed applicants, applications and offers are rounded to the nearest 5.
- Applicants/placed applicants per 10,000 population figures are reported as 0 if the applicant/placed applicant figures are rounded to 0.
- All statistics related to the offer rate are not reported when the number of applications for a group is less than 10. The percentage point difference between the offer rate and the average offer rate is not reported when the number of applications for a group is less than 50.
- Offer rates are reported as 0% if there are fewer than 5 offers, and 100% if the number of offers is within 5 of the number of applications. When the offer rate is reported as 0% or 100%, it is reported in italics.

Contents:

18 year old applicants:	P.1
18 year old applications:	P.2
18 year old applicants by sex:	P.3
18 year old applications by sex:	P.4
18 year old applicants by POLAR3 quintile:	P.7
18 year old applications by POLAR3 quintile:	P.8
18 year old applicants by ethnic group:	P.11
18 year old applications by ethnic group:	P.12
Applicants (all ages):	P.15
Applications (all ages):	P.16
Applicants (all ages) by sex:	P.17
Applications (all ages) by sex:	P.18
Applicants (all ages) by POLAR3 quintile:	P.19
Applications (all ages) by POLAR3 quintile:	P.20
Applicants (all ages) by ethnic group:	P.21
Applications (all ages) by ethnic group:	P.22

P.1 18 year old applicants

Statistic	2012	2013	2014	2015	2016	2017
June deadline applicants	28,645	27,580	25,100	25,900	27,805	26,575
Placed June deadline applicants	3,970	3,935	3,740	4,010	4,080	3,935
All placed applicants	4,220	4,195	3,905	4,485	4,550	4,580
June deadline applicants per 10,000 population	370.3	362.4	333.3	338.1	371.0	358.7
Placed June deadline applicants per 10,000	51.3	51.7	49.6	52.3	54.4	53.1
All placed applicants per 10,000 population	54.6	55.2	51.9	58.5	60.7	61.8

P.2 18 year old applications

Statistic	2012	2013	2014	2015	2016	2017
June deadline applications	29,680	28,490	25,885	26,665	28,570	27,295
Offers	20,650	20,965	20,045	20,940	22,585	22,445
Offer rate	69.6%	73.6%	77.4%	78.5%	79.1%	82.2%

P.3 18 year old applicants by sex

Statistic	Sex	2012	2013	2014	2015	2016	2017
June deadline applicants	Men	13,500	12,685	10,995	11,630	12,260	12,100
	Women	15,145	14,895	14,110	14,270	15,545	14,475
Placed June deadline applicants	Men	1,910	1,830	1,685	1,890	1,880	1,850
	Women	2,060	2,105	2,050	2,120	2,200	2,085
All placed applicants	Men	2,010	1,940	1,775	2,110	2,090	2,135
	Women	2,210	2,260	2,130	2,375	2,460	2,445
June deadline applicants per 10,000 population	Men	340.4	325.0	284.0	296.3	319.2	318.6
	Women	401.8	401.9	385.4	381.9	425.4	400.9
Placed June deadline applicants per 10,000 population	Men	48.1	46.9	43.6	48.1	48.9	48.7
	Women	54.7	56.8	56.1	56.7	60.2	57.8
All placed applicants per 10,000 population	Men	50.7	49.6	45.9	53.8	54.4	56.2
	Women	58.6	61.0	58.2	63.5	67.4	67.8

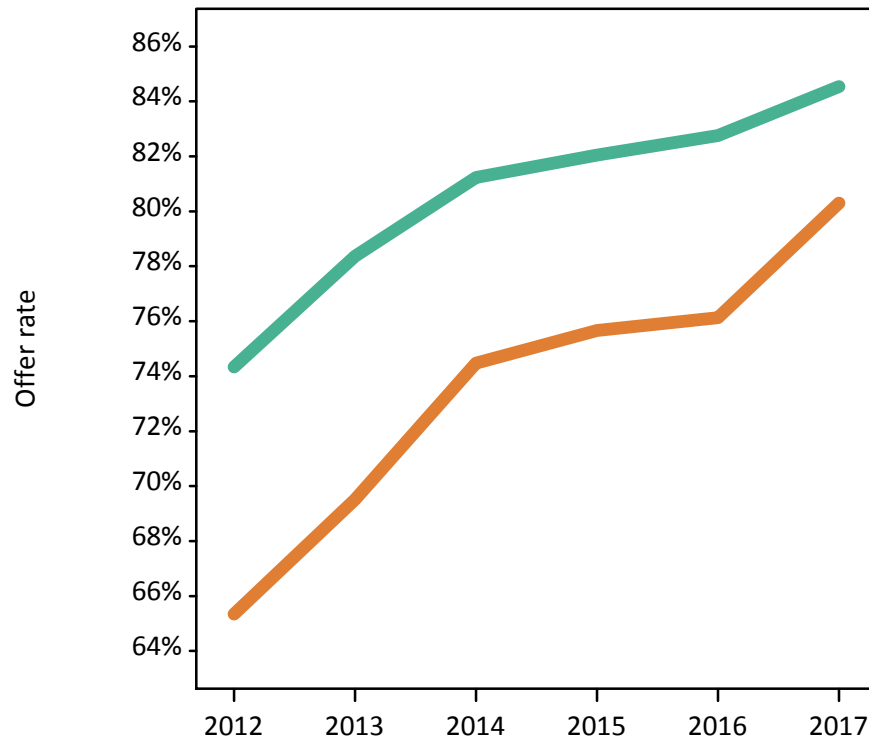
P.4 18 year old applications by sex

Statistic	Sex	2012	2013	2014	2015	2016	2017
June deadline applications	Men	13,960	13,105	11,325	11,970	12,605	12,415
	Women	15,720	15,380	14,560	14,695	15,965	14,885
Offers	Men	10,380	10,270	9,200	9,820	10,435	10,495
	Women	10,270	10,690	10,845	11,120	12,155	11,950
Offer rate	Men	74.3%	78.4%	81.2%	82.0%	82.8%	84.5%
	Women	65.3%	69.5%	74.5%	75.7%	76.1%	80.3%
Average offer rate	Men	74.6%	78.7%	81.6%	82.5%	83.1%	84.8%
	Women	65.1%	69.3%	74.2%	75.3%	75.8%	80.1%
Percentage point difference between offer rate and average offer rate	Men	-0.3	-0.3	-0.3	-0.5	-0.4	-0.2
	Women	0.3	0.2	0.3	0.4	0.3	0.2
Contribution of group to the average offer rate	Men	0.604	0.594	0.584	0.597	0.587	0.601
	Women	0.648	0.654	0.676	0.671	0.674	0.667

P.5 18 year old offer rate by sex

Note: The line for a group is not plotted when that group made fewer than 10 applications in any of the years from 2012-2017.

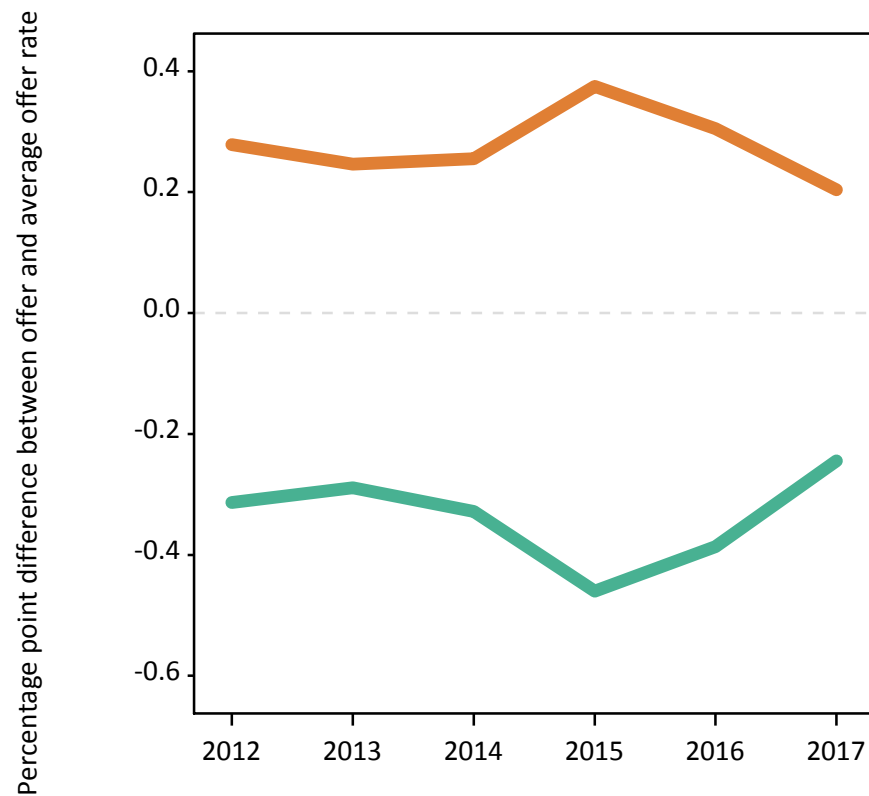
Men
Women



P.6 Percentage point difference between 18 year old offer rate and average offer rate by sex

Note: The line for a group is not plotted when that group made fewer than 50 applications in any of the years from 2012-2017.

Men
Women



P.7 18 year old applicants by POLAR3 quintile

Statistic	POLAR3 quintile	2012	2013	2014	2015	2016	2017
June deadline applicants	Quintile 1	1,730	1,695	1,790	1,820	2,015	2,000
	Quintile 2	3,160	3,050	2,895	3,070	3,255	3,180
	Quintile 3	4,525	4,340	4,120	4,220	4,440	4,420
	Quintile 4	6,700	6,400	5,635	5,870	6,375	6,070
	Quintile 5	12,485	12,065	10,615	10,870	11,685	10,840
Placed June deadline applicants	Quintile 1	195	220	225	230	260	265
	Quintile 2	405	440	430	450	485	435
	Quintile 3	615	595	605	595	660	620
	Quintile 4	920	885	840	910	910	940
	Quintile 5	1,830	1,785	1,635	1,815	1,760	1,670
All placed applicants	Quintile 1	205	235	235	250	285	295
	Quintile 2	440	460	440	485	535	495
	Quintile 3	650	630	630	660	745	700
	Quintile 4	975	940	880	1,015	995	1,080
	Quintile 5	1,950	1,930	1,715	2,060	1,985	2,000
June deadline applicants per 10,000 population	Quintile 1	121.6	121.5	128.7	129.8	149.3	150.5
	Quintile 2	210.8	206.9	198.0	206.8	225.0	223.9
	Quintile 3	293.0	284.4	273.8	274.8	295.3	296.8
	Quintile 4	422.2	409.2	365.7	375.0	412.9	397.5
	Quintile 5	743.1	729.7	651.0	649.4	707.1	660.1
Placed June deadline applicants per 10,000 population	Quintile 1	13.7	15.6	16.2	16.3	19.3	19.9
	Quintile 2	27.1	30.0	29.3	30.3	33.5	30.6
	Quintile 3	40.0	39.1	40.2	38.6	43.9	41.6
	Quintile 4	58.0	56.7	54.4	58.1	58.9	61.4
	Quintile 5	108.9	108.1	100.4	108.5	106.6	101.7
All placed applicants per 10,000 population	Quintile 1	14.5	16.7	16.9	17.9	21.2	22.3
	Quintile 2	29.2	31.3	30.0	32.5	37.0	34.9
	Quintile 3	42.1	41.2	42.0	43.0	49.7	47.1
	Quintile 4	61.4	60.1	57.2	65.0	64.6	70.6
	Quintile 5	116.0	116.8	105.1	123.1	120.0	121.7

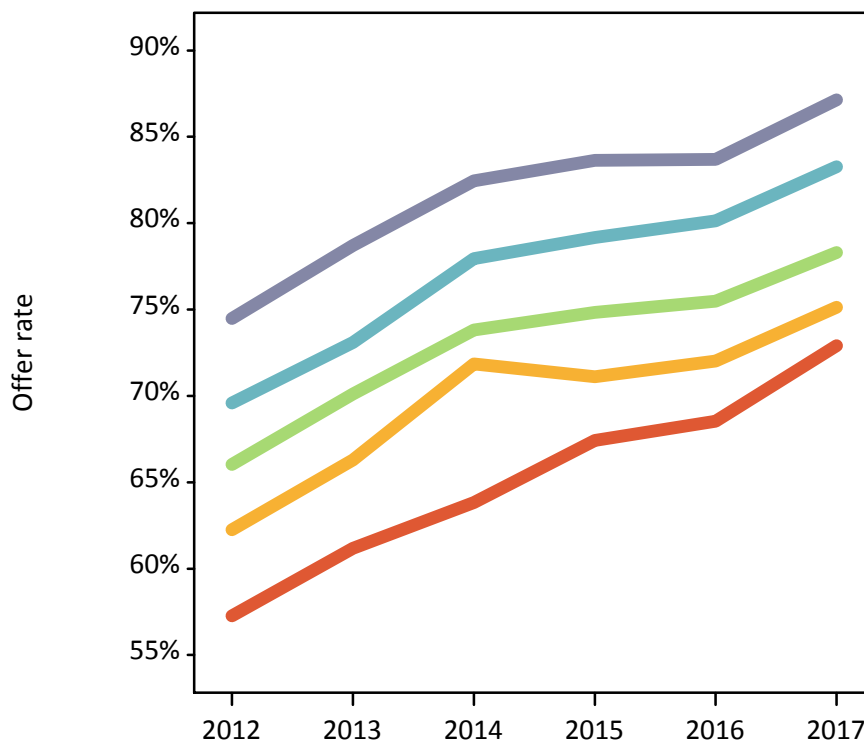
P.8 18 year old applications by POLAR3 quintile

Statistic	POLAR3 quintile	2012	2013	2014	2015	2016	2017
June deadline applications	Quintile 1	1,800	1,770	1,875	1,900	2,100	2,070
	Quintile 2	3,305	3,150	2,990	3,190	3,350	3,290
	Quintile 3	4,695	4,480	4,245	4,345	4,565	4,540
	Quintile 4	6,945	6,630	5,795	6,000	6,530	6,230
	Quintile 5	12,895	12,420	10,935	11,180	11,990	11,095
Offers	Quintile 1	1,030	1,085	1,200	1,280	1,440	1,510
	Quintile 2	2,055	2,090	2,150	2,265	2,415	2,470
	Quintile 3	3,100	3,140	3,135	3,255	3,445	3,555
	Quintile 4	4,835	4,845	4,515	4,750	5,230	5,190
	Quintile 5	9,605	9,775	9,015	9,350	10,030	9,670
Offer rate	Quintile 1	57.3%	61.2%	63.8%	67.4%	68.5%	72.9%
	Quintile 2	62.3%	66.3%	71.9%	71.1%	72.0%	75.1%
	Quintile 3	66.0%	70.1%	73.8%	74.8%	75.5%	78.3%
	Quintile 4	69.6%	73.1%	77.9%	79.2%	80.1%	83.3%
	Quintile 5	74.5%	78.7%	82.4%	83.6%	83.7%	87.1%
Average offer rate	Quintile 1	60.0%	62.6%	66.1%	69.1%	70.1%	74.2%
	Quintile 2	62.7%	66.9%	72.4%	72.6%	73.4%	76.3%
	Quintile 3	66.2%	70.9%	74.6%	75.4%	76.2%	79.3%
	Quintile 4	70.1%	73.3%	77.2%	79.0%	79.9%	83.7%
	Quintile 5	73.6%	78.0%	82.0%	82.8%	82.8%	85.9%
Percentage point difference between offer rate and average offer rate	Quintile 1	-2.8	-1.4	-2.3	-1.7	-1.6	-1.3
	Quintile 2	-0.5	-0.6	-0.5	-1.5	-1.4	-1.1
	Quintile 3	-0.2	-0.7	-0.8	-0.6	-0.8	-1.0
	Quintile 4	-0.5	-0.2	0.8	0.2	0.2	-0.5
	Quintile 5	0.8	0.7	0.4	0.8	0.9	1.3
Contribution of group to the average offer rate	Quintile 1	0.129	0.131	0.155	0.143	0.142	0.137
	Quintile 2	0.164	0.165	0.171	0.176	0.175	0.178
	Quintile 3	0.201	0.197	0.213	0.210	0.204	0.214
	Quintile 4	0.267	0.268	0.260	0.259	0.261	0.264
	Quintile 5	0.480	0.483	0.476	0.472	0.468	0.458

P.9 18 year old offer rate by POLAR3 quintile

Note: The line for a group is not plotted when that group made fewer than 10 applications in any of the years from 2012-2017.

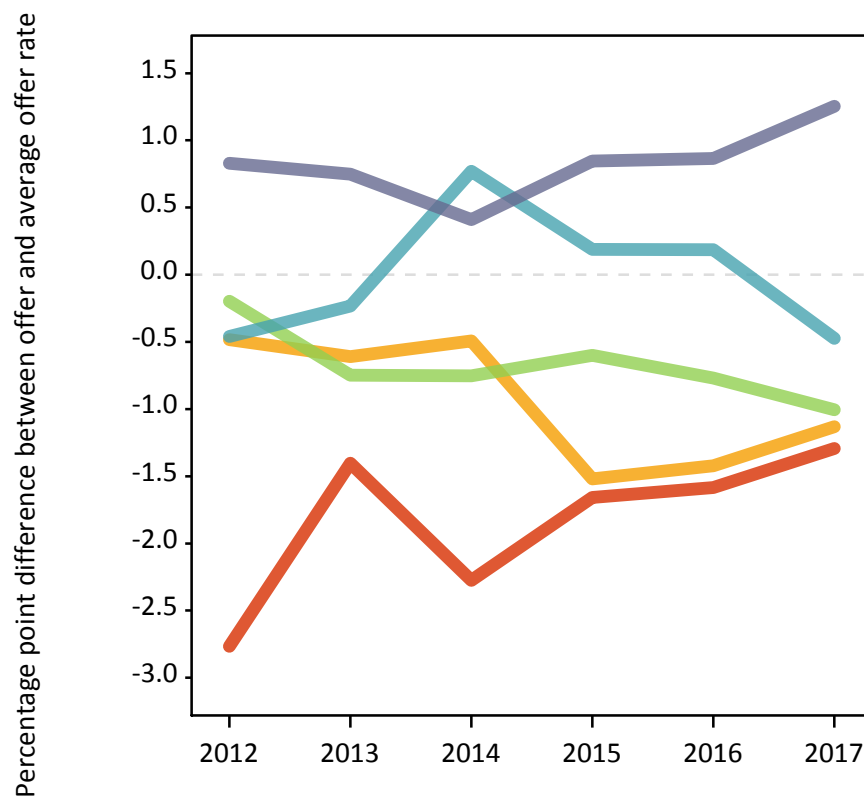
- Quintile 1
- Quintile 2
- Quintile 3
- Quintile 4
- Quintile 5



P.10 Percentage point difference between 18 year old offer rate and average offer rate by POLAR3 quintile

Note: The line for a group is not plotted when that group made fewer than 50 applications in any of the years from 2012-2017.

- Quintile 1
- Quintile 2
- Quintile 3
- Quintile 4
- Quintile 5



P.11 18 year old applicants by ethnic group

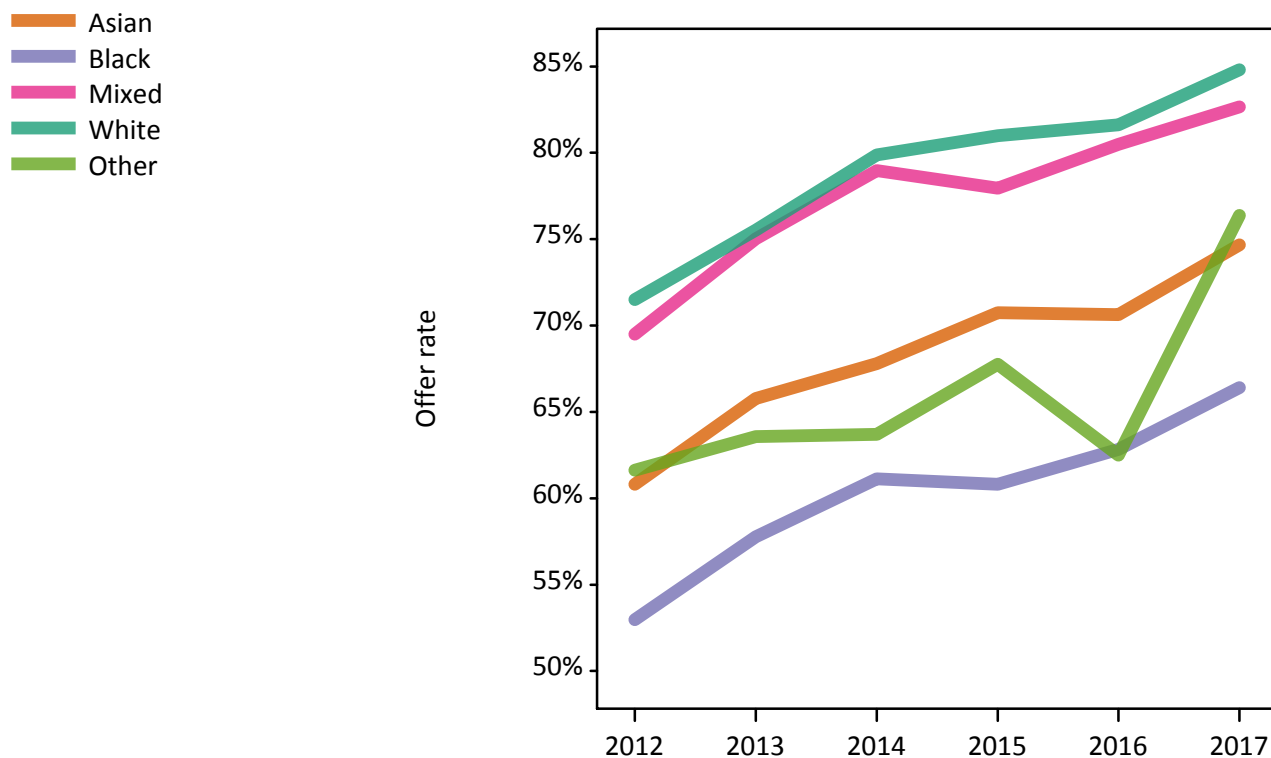
Statistic	Ethnic group	2012	2013	2014	2015	2016	2017
June deadline applicants	Asian	3,105	3,105	2,795	3,130	3,300	3,515
	Black	1,020	1,105	1,190	1,260	1,520	1,535
	Mixed	1,155	1,160	1,025	1,195	1,275	1,365
	White	22,930	21,835	19,720	19,885	21,195	19,650
	Other	235	240	255	270	310	340
Placed June deadline applicants	Asian	370	380	335	410	385	450
	Black	115	140	160	150	215	195
	Mixed	170	160	165	185	195	205
	White	3,270	3,200	3,035	3,220	3,220	3,010
	Other	25	30	30	25	25	50
All placed applicants	Asian	405	420	365	505	485	570
	Black	140	170	175	180	255	260
	Mixed	185	175	175	200	230	245
	White	3,435	3,380	3,145	3,545	3,510	3,415
	Other	30	30	35	35	30	60
June deadline applicants per 10,000 population	Asian	479.8	470.9	411.8	442.5	458.9	477.9
	Black	362.5	371.8	392.6	395.8	485.2	487.8
	Mixed	443.4	428.7	356.3	387.5	405.5	424.9
	White	355.1	347.0	319.7	319.2	350.4	331.1
	Other	266.7	264.7	271.8	279.1	311.5	330.1
Placed June deadline applicants per 10,000 population	Asian	56.8	57.8	49.4	58.1	53.4	61.4
	Black	40.1	47.8	52.5	47.1	68.4	61.3
	Mixed	65.3	59.5	56.7	59.3	62.6	63.2
	White	50.6	50.9	49.2	51.7	53.3	50.7
	Other	27.1	32.0	33.3	27.0	24.1	48.5
All placed applicants per 10,000 population	Asian	62.2	64.0	54.0	71.4	67.4	77.2
	Black	49.4	57.3	57.1	56.9	82.1	82.0
	Mixed	70.6	64.0	60.5	64.2	72.8	76.0
	White	53.2	53.7	50.9	56.9	58.0	57.6
	Other	33.9	32.0	37.6	34.2	29.1	59.2

P.12 18 year old applications by ethnic group

Statistic	Ethnic group	2012	2013	2014	2015	2016	2017
June deadline applications	Asian	3,170	3,175	2,870	3,190	3,360	3,590
	Black	1,045	1,125	1,215	1,275	1,545	1,555
	Mixed	1,175	1,195	1,045	1,225	1,300	1,395
	White	23,845	22,605	20,375	20,535	21,840	20,235
	Other	245	245	260	275	310	345
Offers	Asian	1,930	2,090	1,945	2,255	2,375	2,680
	Black	555	650	740	775	970	1,030
	Mixed	820	895	825	955	1,050	1,155
	White	17,045	17,070	16,275	16,630	17,825	17,160
	Other	150	155	165	185	195	265
Offer rate	Asian	60.8%	65.8%	67.8%	70.7%	70.6%	74.7%
	Black	53.0%	57.8%	61.1%	60.8%	62.8%	66.4%
	Mixed	69.5%	75.0%	79.0%	78.0%	80.5%	82.7%
	White	71.5%	75.5%	79.9%	81.0%	81.6%	84.8%
	Other	61.6%	63.6%	63.7%	67.8%	62.5%	76.4%
Average offer rate	Asian	61.1%	65.9%	68.8%	71.0%	71.4%	75.4%
	Black	55.8%	59.0%	62.8%	63.7%	65.2%	68.4%
	Mixed	68.5%	74.6%	78.1%	78.8%	80.2%	82.6%
	White	71.4%	75.4%	79.6%	80.7%	81.3%	84.6%
	Other	63.6%	66.0%	67.3%	68.4%	68.6%	76.7%
Percentage point difference between offer rate and average offer rate	Asian	-0.3	-0.1	-1.0	-0.2	-0.8	-0.7
	Black	-2.8	-1.2	-1.7	-2.8	-2.4	-2.0
	Mixed	1.0	0.4	0.9	-0.9	0.3	0.0
	White	0.1	0.1	0.2	0.3	0.3	0.3
	Other	-2.0	-2.4	-3.6	-0.6	-6.1	-0.3
Contribution of group to the average offer rate	Asian	0.212	0.214	0.217	0.224	0.217	0.229
	Black	0.122	0.132	0.155	0.140	0.147	0.149
	Mixed	0.088	0.089	0.088	0.089	0.089	0.098
	White	0.829	0.822	0.819	0.802	0.798	0.777
	Other	0.059	0.063	0.076	0.071	0.081	0.067

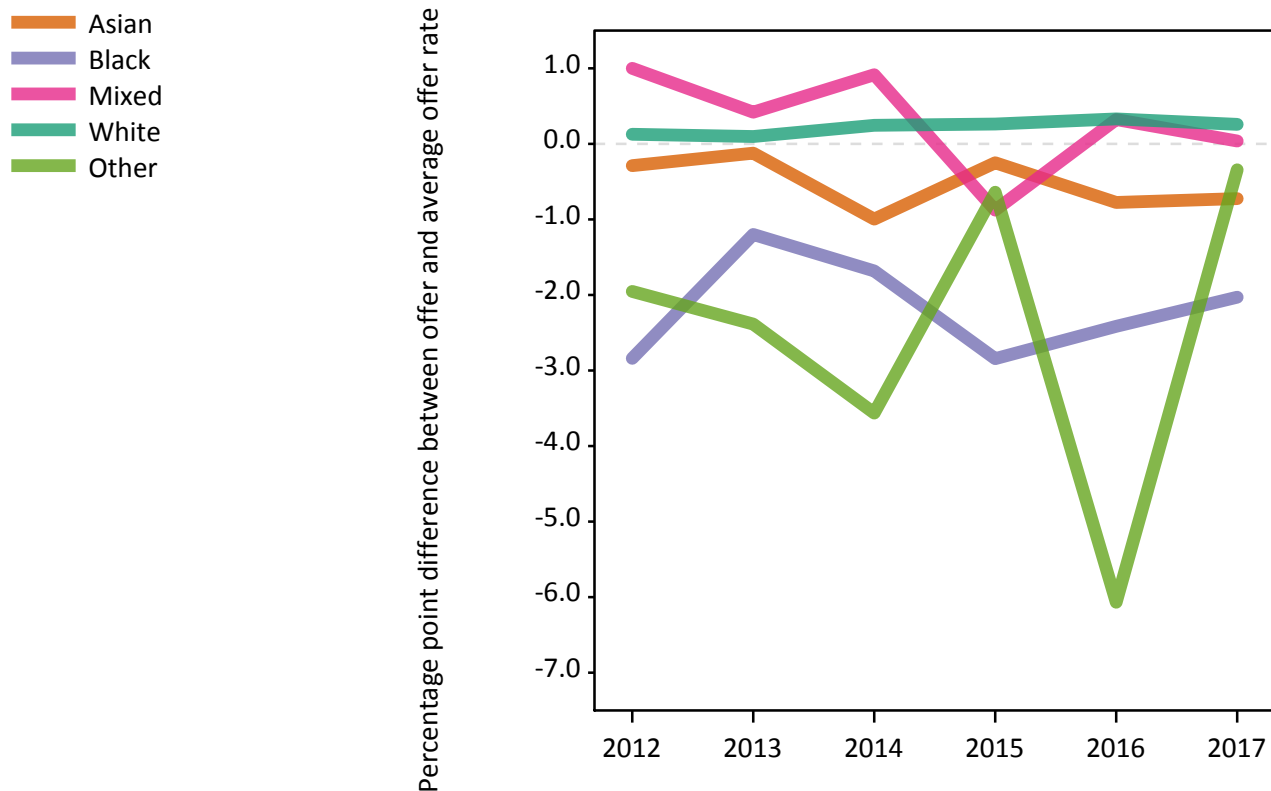
P.13 18 year old offer rate by ethnic group

Note: The line for a group is not plotted when that group made fewer than 10 applications in any of the years from 2012-2017.



P.14 Percentage point difference between 18 year old offer rate and average offer rate by ethnic group

Note: The line for a group is not plotted when that group made fewer than 50 applications in any of the years from 2012-2017.



P.15 Applicants (all ages)

Statistic	2012	2013	2014	2015	2016	2017
June deadline applicants	40,575	39,850	37,855	38,870	40,935	38,020
Placed June deadline applicants	5,425	5,330	5,385	5,725	5,775	5,600
All placed applicants	5,810	5,805	5,705	6,480	6,450	6,555

P.16 Applications (all ages)

Statistic	2012	2013	2014	2015	2016	2017
June deadline applications	42,775	41,670	39,590	40,295	42,395	39,285
Offers	25,410	26,005	25,765	26,695	28,960	28,685
Offer rate	59.4%	62.4%	65.1%	66.3%	68.3%	73.0%

P.17 Applicants (all ages) by sex

Statistic	Sex	2012	2013	2014	2015	2016	2017
June deadline applicants	Men	18,285	17,740	16,060	16,990	17,825	17,250
	Women	22,290	22,110	21,800	21,885	23,110	20,770
Placed June deadline applicants	Men	2,530	2,440	2,360	2,595	2,575	2,595
	Women	2,895	2,895	3,025	3,130	3,200	3,005
All placed applicants	Men	2,675	2,615	2,500	2,935	2,870	3,030
	Women	3,135	3,190	3,205	3,545	3,580	3,525

P.18 Applications (all ages) by sex

Statistic	Sex	2012	2013	2014	2015	2016	2017
June deadline applications	Men	19,045	18,385	16,690	17,550	18,415	17,775
	Women	23,735	23,285	22,900	22,745	23,980	21,510
Offers	Men	12,785	12,830	11,940	12,600	13,565	13,565
	Women	12,625	13,175	13,825	14,095	15,395	15,120
Offer rate	Men	67.1%	69.8%	71.5%	71.8%	73.7%	76.3%
	Women	53.2%	56.6%	60.4%	62.0%	64.2%	70.3%

P.19 Applicants (all ages) by POLAR3 quintile

Statistic	POLAR3 quintile	2012	2013	2014	2015	2016	2017
June deadline applicants	Quintile 1	3,445	3,365	3,690	3,720	3,965	3,585
	Quintile 2	5,055	5,075	5,115	5,305	5,460	5,115
	Quintile 3	6,595	6,555	6,420	6,570	6,860	6,490
	Quintile 4	9,185	8,980	8,260	8,455	9,050	8,435
	Quintile 5	16,220	15,800	14,300	14,740	15,530	14,305
Placed June deadline applicants	Quintile 1	385	405	445	475	485	495
	Quintile 2	615	655	710	710	780	725
	Quintile 3	835	835	865	880	970	925
	Quintile 4	1,215	1,185	1,180	1,245	1,245	1,280
	Quintile 5	2,370	2,240	2,170	2,400	2,285	2,165
All placed applicants	Quintile 1	420	450	480	535	525	565
	Quintile 2	670	700	745	790	870	815
	Quintile 3	885	905	915	995	1,110	1,065
	Quintile 4	1,305	1,280	1,250	1,405	1,360	1,495
	Quintile 5	2,525	2,460	2,305	2,735	2,580	2,600

P.20 Applications (all ages) by POLAR3 quintile

Statistic	POLAR3 quintile	2012	2013	2014	2015	2016	2017
June deadline applications	Quintile 1	3,810	3,665	4,010	3,935	4,195	3,780
	Quintile 2	5,440	5,375	5,395	5,565	5,710	5,330
	Quintile 3	6,955	6,875	6,725	6,815	7,110	6,715
	Quintile 4	9,620	9,370	8,570	8,675	9,310	8,685
	Quintile 5	16,865	16,305	14,810	15,220	15,995	14,680
Offers	Quintile 1	1,490	1,555	1,785	1,860	2,140	2,170
	Quintile 2	2,625	2,765	2,925	3,030	3,335	3,380
	Quintile 3	3,825	3,975	4,095	4,195	4,525	4,665
	Quintile 4	5,890	5,980	5,775	5,975	6,595	6,555
	Quintile 5	11,540	11,690	11,135	11,580	12,325	11,860
Offer rate	Quintile 1	39.0%	42.4%	44.5%	47.3%	51.0%	57.4%
	Quintile 2	48.3%	51.4%	54.2%	54.5%	58.4%	63.4%
	Quintile 3	55.0%	57.8%	60.9%	61.6%	63.7%	69.4%
	Quintile 4	61.2%	63.8%	67.4%	68.8%	70.8%	75.5%
	Quintile 5	68.4%	71.7%	75.2%	76.1%	77.1%	80.8%

P.21 Applicants (all ages) by ethnic group

Statistic	Ethnic group	2012	2013	2014	2015	2016	2017
June deadline applicants	Asian	4,820	4,855	4,470	5,035	5,195	5,280
	Black	2,455	2,500	2,695	2,995	3,370	3,110
	Mixed	1,640	1,700	1,610	1,815	1,945	1,990
	White	30,900	30,110	28,340	28,210	29,475	26,690
	Other	425	435	435	495	585	595
Placed June deadline applicants	Asian	550	515	500	600	605	660
	Black	205	245	265	295	395	380
	Mixed	230	220	235	265	285	325
	White	4,350	4,275	4,300	4,480	4,380	4,115
	Other	35	45	45	45	50	70
All placed applicants	Asian	605	590	560	735	745	845
	Black	255	290	300	365	460	500
	Mixed	250	245	255	290	325	385
	White	4,605	4,595	4,505	4,950	4,800	4,670
	Other	50	50	50	60	60	90

P.22 Applications (all ages) by ethnic group

Statistic	Ethnic group	2012	2013	2014	2015	2016	2017
June deadline applications	Asian	4,970	4,980	4,610	5,150	5,310	5,420
	Black	2,615	2,600	2,825	3,105	3,495	3,180
	Mixed	1,700	1,760	1,665	1,875	2,005	2,045
	White	32,705	31,610	29,705	29,320	30,605	27,660
	Other	450	450	450	510	605	615
Offers	Asian	2,645	2,780	2,705	3,085	3,330	3,655
	Black	855	955	1,115	1,210	1,550	1,630
	Mixed	1,030	1,145	1,090	1,250	1,380	1,530
	White	20,445	20,745	20,435	20,665	22,105	21,235
	Other	235	230	235	285	340	395
Offer rate	Asian	53.2%	55.8%	58.6%	59.9%	62.8%	67.4%
	Black	32.8%	36.7%	39.4%	39.0%	44.3%	51.3%
	Mixed	60.4%	65.2%	65.4%	66.5%	69.0%	74.8%
	White	62.5%	65.6%	68.8%	70.5%	72.2%	76.8%
	Other	52.2%	51.3%	52.7%	56.2%	56.5%	64.2%

Technical Notes and Definitions

UCAS undergraduate scheme

Adjustment

Adjustment allows applicants who have met and exceeded the terms of their conditional firm offer to seek and find a place at another provider whilst keeping their place at their original firm choice provider.

Clearing

Clearing is a route for applicants that are not placed and holding no offers to find a place on courses with vacancies.

Cycle year

The UCAS application cycle which runs from September to October the following year. For example the 2017 cycle runs from September 2016 through to October 2017.

End of cycle

The point in the cycle to which the numbers in this report refer, and the point at which the cycle is closed such that no more applications or offers can be made, and no more applicants can be placed. Numbers reported at the end of cycle exclude information on a small number of applicants who cancelled during the cycle.

Extra

Applicants who are unsuccessful in obtaining an offer or decline all offers may be eligible to apply through Extra, where they can apply to one further course at a time. Extra operates from 25 February until early July. It provides applicants who are eligible the possibility of obtaining an offer before exam results are published and Clearing starts.

June 30 deadline

The deadline for main scheme applications. Applicants who apply after this date will go directly into Clearing.

Record of Prior Acceptance (RPA)

RPA is an acceptance route used when a provider informs UCAS of applicants it has accepted outside of the normal application process (e.g. individuals who have applied directly to the provider).

Reporting groups

Ethnic group

High level grouping of ethnic origin as declared by the applicant: 'White', 'Black', 'Asian', 'Mixed', 'Other', 'Unknown'. Applicants who declare themselves as 'Unknown' ethnic origin are not reported in these tables, but are included in the associated csv data file.

POLAR3 quintile

Developed by HEFCE, POLAR3 classifies small areas across the UK into five groups according to their level of young participation in Higher Education. Each of these groups represents around 20 per cent of young people and is ranked from Quintile 1 (areas with the lowest young participation rates, considered as the most disadvantaged) to Quintile 5 (highest young participation rates, considered most advantaged). POLAR3 is based on the participation rates of young people between 2005 and 2009 who entered Higher Education between 2005-06 and 2010-11, therefore is most suitable for applicants aged 19 and under. These groups are assigned using the postcode declared by the applicant at the time of their application. If a UK postcode is invalid, considered unsafe for measurement or there is no link to Census geography possible then the applicant is not assigned to a quintile. Applicants with no POLAR3 quintile are not reported.

Sex

Sex as declared by the applicant.

SIMD 2016 quintile

Scottish index of multiple deprivation (SIMD) identifies small area concentrations of multiple deprivation across all of Scotland, providing a relative measure of deprivation amongst 6505 small areas (data zones) based on 7 socio-economic domains. These small areas are classified into five groups ranked from Quintile 1 (considered the most deprived) to Quintile 5 (considered least deprived), with equal populations in each quintile. Quintiles are assigned using the postcode declared by the applicant, applicants declaring invalid postcodes are classified as 'Not assigned' and are not reported.

SIMD is only defined for applicants domiciled in Scotland, therefore any applicants domiciled outside of Scotland cannot be assigned to an SIMD quintile and so are not reported for this measure.

SIMD is only reported for providers in Scotland. Application and entry rates by SIMD are reported in the 2017 End of Cycle Report and the 2017 cycle January deadline application rate report.

Statistics reported in the tables

All placed applicants

The number of applicants placed for entry into higher education at the provider through one of their choices, including any choices made through Extra, or via Adjustment, Clearing or RPA.

All placed applicants per 10,000 population

The number of total UK domiciled 18 year old placed applicants for entry into higher education at the provider divided by the number of UK 18 year olds in the population, multiplied by 10,000. This gives the number of 18 year olds, for every 10,000 in the population, that were placed at the provider through one of their choices, including any choices made through Extra, or via Adjustment, Clearing or RPA. It is an alternative way of expressing the entry rate to a provider. By referencing the underlying population this statistic shows how the number of placed applicants is changing in relation to the available pool of potential applicants and so gives the chance that somebody from the group will be placed at a provider.

This statistic is only reported for 18 year olds.

Average offer rate

The offer rate that you might expect if the predicted grades and subject choice of applicants were the only factors that influenced whether an applicant was made an offer by the provider. The average offer rate is calculated by dividing applicants according to their specific combination of grades (for A levels the best three predicted grades are used, for BTECs, International Baccalaureate and Scottish Highers and Advanced Highers, predicted grades along with any grades already achieved upon applying are used) and subject choice. For each combination the number of main scheme offers is divided by the number of main scheme applications, to give an overall offer rate. This is then multiplied by the number of applications made by the group for which the average offer rate is being calculated (for example POLAR3 quintile 1), to give an average number of offers for that group. These average number of offers are then added together across all combinations of predicted grade and subject and divided by the number of main scheme applications from the group to give the average offer rate.

The average offer rate does not attempt to control for any other factors that may play a part in the decision to make an offer, such as the subject of the qualifications studied, their relevance to a course, or the grade in each subject; higher numbers of A levels being studied; the exact profile of grades predicted; personal statements; teacher references; interviews; or any other criteria (such as work experience or portfolios) that may be part of the admissions decision.

This statistic is only reported for 18 year olds.

Contribution of group to the average offer rate

The way in which the average offer rate is defined means that the pattern of application and offers of a group (for example POLAR3 quintile 1) will always contribute, in part, to the average offer rate for that group. When this contribution is large, the average offer rate will mainly reflect the patterns for the group, meaning that the value of the average offer rate will be similar to the offer rate, the percentage point difference statistic will be small, and any real difference between the offer rate and what might be expected given the predicted grades and subject choices of the applicants will be difficult to detect.

Values of the contribution of group to the average offer rate range between 0 and 1. The closer the value is to 1 the greater the contribution a group makes to its own average offer rate.

This statistic is only reported for 18 year olds.

Placed June deadline applicants

An applicant who has been placed for entry into higher education at the provider through a June deadline application.

Placed June deadline applicants per 10,000 population

The number of UK domiciled 18 year old placed June deadline applicants at the provider divided by the number of UK 18 year olds in the population, multiplied by 10,000. This gives the number of 18 year olds, for every 10,000 in the population, that were placed at the provider through one of their June deadline applications. It is an alternative way of expressing the entry rate to a provider, but for placed June deadline applicants only. By referencing the underlying population this statistic shows how the number of placed June deadline applicants is changing in relation to the available pool of potential 18 year old applicants and so gives the chance that somebody from the group will be placed at a provider through a June deadline application.

This statistic is only reported for 18 year olds.

June deadline applications

An application (or choice) to a course in higher education to the provider that is made by the June 30 deadline. Each applicant can make up to five choices this way. The number of June deadline applications does not include choices made through the following routes: Clearing, Extra, Adjustment and RPAs. Applications made to October deadline courses received after the October deadline are not included in these statistics.

June deadline applicants

The number of applicants that made at least one application to the provider by the June 30 deadline.

June deadline applicants per 10,000 population

The number of UK domiciled 18 year old June deadline applicants to the provider divided by the number of UK 18 year olds in the population, multiplied by 10,000. This gives the number of 18 year olds, for every 10,000 in the population, who applied by the June 30 deadline. It is equivalent to the application rate. By referencing the underlying population this statistic shows how the number of June deadline applicants is changing in relation to the available pool of potential 18 year old applicants and so gives the chance that somebody from the group will apply to a provider by the June 30 deadline.

This statistic is only reported for 18 year olds.

Offers

An offer is defined as a provider's decision in response to an application to offer a place to an applicant, often subject to the applicant satisfying academic and/or other criteria, via a June deadline application (i.e. does not cover choices made through the following routes: Clearing, Extra, Adjustment and RPAs).

Offer rate

The number of offers made divided by the number of June deadline applications. This gives the proportion of all June deadline applications to the provider that received an offer.

Percentage point difference between offer rate and average offer rate

The offer rate minus the average offer rate.

The percentage point difference can be compared to the expected range of statistical variation resulting from the calculation of the average offer rate using the Average Offer Rate Lookup Table. Where the value of the percentage point difference lies outside of this range, the percentage point difference may be considered to represent a real difference between the offer rate and the average offer rate.

Other definitions

Age

This analysis uses country-specific age definitions that align with the cut off points for school and college cohorts within the different administrations of the UK. For England and Wales, ages are defined on the 31 August, for Northern Ireland on the 1 July and for Scotland on the 28 February the following year. Defining ages in this way matches the assignment of children to school cohorts. For applicants outside of the UK a cohort cut off of 31 August has been used. Numbers for applicants aged 17 and under are included in the tables that report numbers for all age groups. Providers in Scotland typically receive a higher proportion of applicants aged 17 and under compared to providers elsewhere in the UK.

Provider

A higher education provider - a university or college.

UK domiciled

Declared area of permanent residence within England, Northern Ireland, Scotland and Wales. Applicants from the Channel Islands and Isle of Man are not included.