

N21 Newcastle University

Cycle years: 2012 - 2017

Cycle Reference Point: End of Cycle

Applicant coverage: UK domiciled

Reporting groups: Sex, POLAR3, ethnic group

Applicant statistics: June deadline applicants, placed June deadline applicants, all placed applicants, June deadline applicants per 10,000 population, placed June deadline applicants per 10,000 population, all placed applicants per 10,000 population

Application statistics: June deadline applications, offers, offer rate, average offer rate, percentage point difference between offer rate and average offer rate, contribution of group to the average offer rate

Non-disclosure controls: To avoid the disclosure of information about any individual the following measures are taken

- Applicants, placed applicants, applications and offers are rounded to the nearest 5.
- Applicants/placed applicants per 10,000 population figures are reported as 0 if the applicant/placed applicant figures are rounded to 0.
- All statistics related to the offer rate are not reported when the number of applications for a group is less than 10. The percentage point difference between the offer rate and the average offer rate is not reported when the number of applications for a group is less than 50.
- Offer rates are reported as 0% if there are fewer than 5 offers, and 100% if the number of offers is within 5 of the number of applications. When the offer rate is reported as 0% or 100%, it is reported in italics.

Contents:

18 year old applicants:	P.1
18 year old applications:	P.2
18 year old applicants by sex:	P.3
18 year old applications by sex:	P.4
18 year old applicants by POLAR3 quintile:	P.7
18 year old applications by POLAR3 quintile:	P.8
18 year old applicants by ethnic group:	P.11
18 year old applications by ethnic group:	P.12
Applicants (all ages):	P.15
Applications (all ages):	P.16
Applicants (all ages) by sex:	P.17
Applications (all ages) by sex:	P.18
Applicants (all ages) by POLAR3 quintile:	P.19
Applications (all ages) by POLAR3 quintile:	P.20
Applicants (all ages) by ethnic group:	P.21
Applications (all ages) by ethnic group:	P.22

P.1 18 year old applicants

Statistic	2012	2013	2014	2015	2016	2017
June deadline applicants	15,085	16,825	16,655	17,025	18,200	20,315
Placed June deadline applicants	2,700	2,850	2,715	2,895	3,415	3,295
All placed applicants	2,935	3,160	3,055	3,290	3,920	3,830
June deadline applicants per 10,000 population	195.0	221.1	221.1	222.2	242.8	274.2
Placed June deadline applicants per 10,000	34.9	37.5	36.0	37.8	45.5	44.5
All placed applicants per 10,000 population	37.9	41.5	40.5	43.0	52.3	51.7

P.2 18 year old applications

Statistic	2012	2013	2014	2015	2016	2017
June deadline applications	16,155	17,790	17,665	17,910	19,310	21,495
Offers	13,365	15,135	15,325	16,500	17,045	18,905
Offer rate	82.7%	85.1%	86.7%	92.1%	88.3%	87.9%

P.3 18 year old applicants by sex

Statistic	Sex	2012	2013	2014	2015	2016	2017
June deadline applicants	Men	7,420	8,340	8,085	7,995	8,465	9,335
	Women	7,670	8,490	8,570	9,030	9,735	10,985
Placed June deadline applicants	Men	1,295	1,405	1,335	1,295	1,575	1,545
	Women	1,405	1,445	1,380	1,600	1,840	1,755
All placed applicants	Men	1,395	1,565	1,500	1,480	1,795	1,820
	Women	1,540	1,595	1,550	1,810	2,125	2,015
June deadline applicants per 10,000 population	Men	187.1	213.6	208.9	203.7	220.4	245.7
	Women	203.4	229.1	234.1	241.6	266.4	304.2
Placed June deadline applicants per 10,000 population	Men	32.6	36.0	34.5	33.0	41.0	40.6
	Women	37.3	39.0	37.7	42.8	50.3	48.6
All placed applicants per 10,000 population	Men	35.2	40.1	38.8	37.7	46.7	47.9
	Women	40.8	43.0	42.4	48.5	58.2	55.8

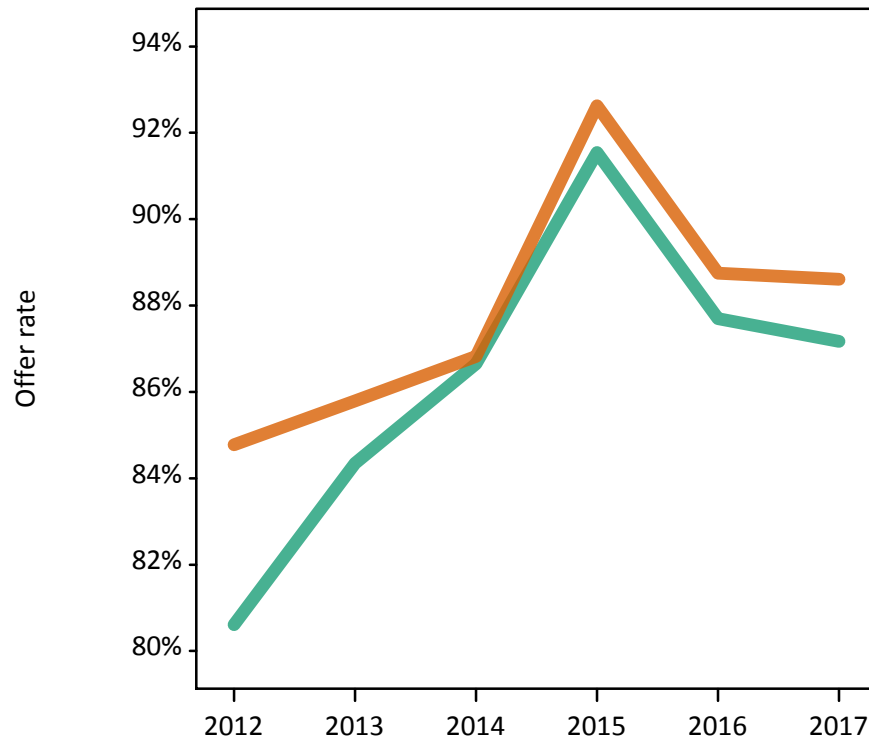
P.4 18 year old applications by sex

Statistic	Sex	2012	2013	2014	2015	2016	2017
June deadline applications	Men	8,025	8,890	8,645	8,490	9,015	9,945
	Women	8,130	8,900	9,025	9,420	10,295	11,550
Offers	Men	6,470	7,500	7,490	7,770	7,905	8,670
	Women	6,895	7,635	7,835	8,725	9,135	10,235
Offer rate	Men	80.6%	84.3%	86.6%	91.5%	87.7%	87.2%
	Women	84.8%	85.8%	86.8%	92.6%	88.8%	88.6%
Average offer rate	Men	81.0%	84.7%	86.6%	91.7%	87.8%	87.4%
	Women	84.4%	85.4%	86.8%	92.5%	88.7%	88.4%
Percentage point difference between offer rate and average offer rate	Men	-0.4	-0.4	0.0	-0.1	-0.1	-0.3
	Women	0.4	0.3	-0.0	0.1	0.1	0.2
Contribution of group to the average offer rate	Men	0.603	0.605	0.605	0.599	0.588	0.578
	Women	0.609	0.605	0.622	0.639	0.639	0.636

P.5 18 year old offer rate by sex

Note: The line for a group is not plotted when that group made fewer than 10 applications in any of the years from 2012-2017.

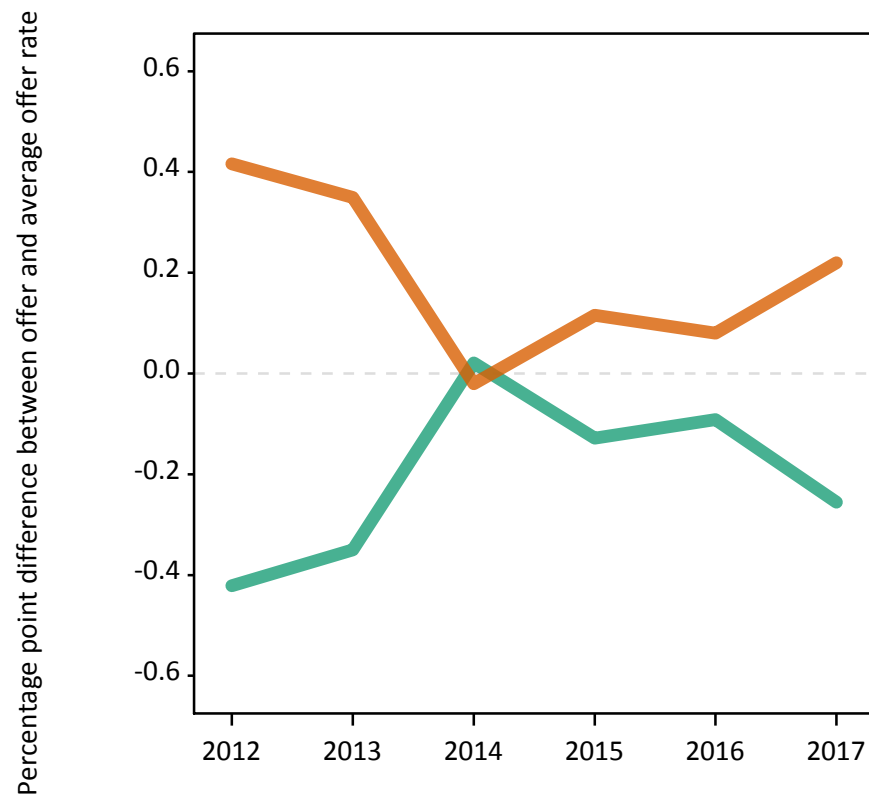
Men
Women



P.6 Percentage point difference between 18 year old offer rate and average offer rate by sex

Note: The line for a group is not plotted when that group made fewer than 50 applications in any of the years from 2012-2017.

Men
Women



P.7 18 year old applicants by POLAR3 quintile

Statistic	POLAR3 quintile	2012	2013	2014	2015	2016	2017
June deadline applicants	Quintile 1	1,090	1,270	1,320	1,510	1,580	1,840
	Quintile 2	1,715	1,880	1,960	2,150	2,135	2,435
	Quintile 3	2,275	2,540	2,700	2,745	2,855	3,240
	Quintile 4	3,485	4,010	3,750	3,850	4,165	4,545
	Quintile 5	6,495	7,085	6,890	6,740	7,435	8,200
Placed June deadline applicants	Quintile 1	180	210	230	235	315	315
	Quintile 2	340	335	305	345	395	385
	Quintile 3	395	440	425	460	550	525
	Quintile 4	635	700	605	665	760	730
	Quintile 5	1,145	1,160	1,140	1,180	1,390	1,330
All placed applicants	Quintile 1	195	230	250	255	345	340
	Quintile 2	360	350	345	385	470	440
	Quintile 3	430	480	475	525	620	610
	Quintile 4	685	770	680	740	860	850
	Quintile 5	1,260	1,315	1,295	1,380	1,620	1,585
June deadline applicants per 10,000 population	Quintile 1	76.5	91.2	95.0	107.8	117.0	138.5
	Quintile 2	114.3	127.6	134.1	144.7	147.5	171.4
	Quintile 3	147.3	166.6	179.4	178.9	189.9	217.6
	Quintile 4	219.6	256.4	243.2	245.8	269.8	297.7
	Quintile 5	386.5	428.6	422.5	402.7	449.9	499.3
Placed June deadline applicants per 10,000 population	Quintile 1	12.7	15.2	16.7	16.8	23.4	23.5
	Quintile 2	22.7	22.6	20.8	23.3	27.4	27.2
	Quintile 3	25.4	28.9	28.3	30.0	36.7	35.3
	Quintile 4	40.1	44.7	39.3	42.4	49.1	47.8
	Quintile 5	68.1	70.2	70.0	70.5	84.1	81.1
All placed applicants per 10,000 population	Quintile 1	13.8	16.6	18.1	18.2	25.7	25.4
	Quintile 2	24.0	23.9	23.4	25.8	32.4	31.1
	Quintile 3	27.8	31.5	31.5	34.1	41.4	41.0
	Quintile 4	43.2	49.4	44.3	47.3	55.8	55.7
	Quintile 5	74.9	79.6	79.5	82.6	97.9	96.4

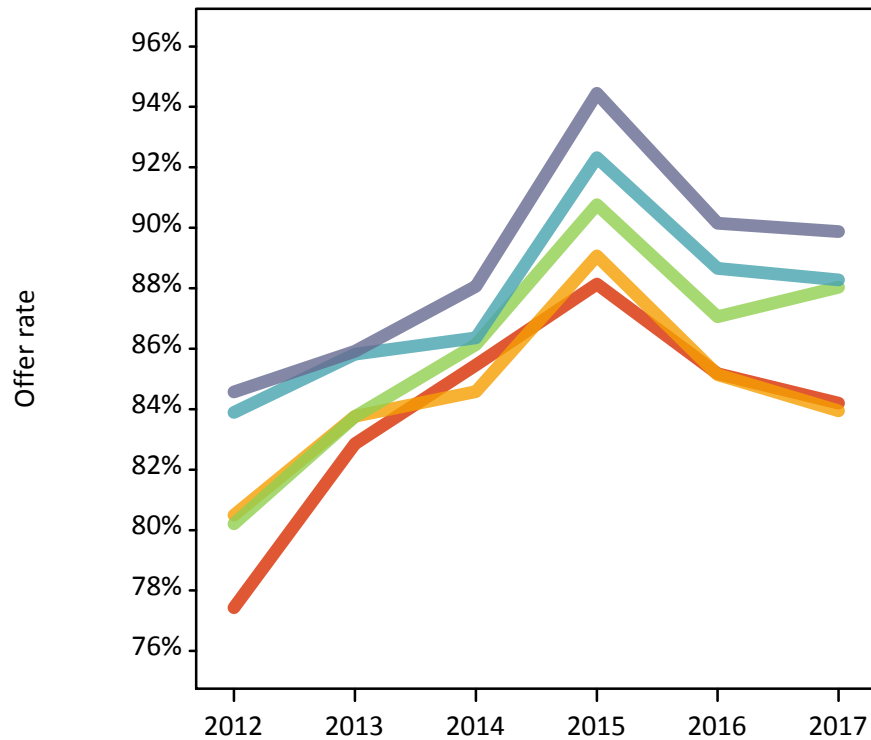
P.8 18 year old applications by POLAR3 quintile

Statistic	POLAR3 quintile	2012	2013	2014	2015	2016	2017
June deadline applications	Quintile 1	1,210	1,390	1,445	1,620	1,720	2,005
	Quintile 2	1,890	2,015	2,115	2,305	2,300	2,605
	Quintile 3	2,465	2,705	2,885	2,900	3,080	3,435
	Quintile 4	3,695	4,215	3,960	4,010	4,375	4,785
	Quintile 5	6,865	7,430	7,235	7,045	7,800	8,610
Offers	Quintile 1	935	1,150	1,235	1,425	1,465	1,690
	Quintile 2	1,525	1,685	1,790	2,055	1,960	2,185
	Quintile 3	1,980	2,265	2,485	2,635	2,685	3,025
	Quintile 4	3,100	3,620	3,420	3,705	3,880	4,225
	Quintile 5	5,805	6,385	6,370	6,650	7,030	7,735
Offer rate	Quintile 1	77.4%	82.9%	85.5%	88.1%	85.2%	84.2%
	Quintile 2	80.5%	83.8%	84.6%	89.1%	85.1%	83.9%
	Quintile 3	80.2%	83.8%	86.1%	90.8%	87.1%	88.0%
	Quintile 4	83.9%	85.8%	86.4%	92.3%	88.7%	88.3%
	Quintile 5	84.6%	85.9%	88.1%	94.4%	90.2%	89.9%
Average offer rate	Quintile 1	78.5%	83.1%	85.5%	88.8%	85.0%	84.5%
	Quintile 2	80.1%	84.6%	85.2%	89.4%	86.6%	85.6%
	Quintile 3	81.4%	84.3%	86.6%	91.8%	87.4%	88.3%
	Quintile 4	84.1%	85.6%	86.7%	92.6%	88.7%	88.2%
	Quintile 5	84.0%	85.6%	87.5%	93.6%	89.6%	89.2%
Percentage point difference between offer rate and average offer rate	Quintile 1	-1.1	-0.2	0.0	-0.7	0.2	-0.3
	Quintile 2	0.4	-0.8	-0.6	-0.4	-1.5	-1.7
	Quintile 3	-1.2	-0.5	-0.4	-1.0	-0.4	-0.3
	Quintile 4	-0.2	0.2	-0.3	-0.3	-0.0	0.1
	Quintile 5	0.6	0.3	0.5	0.9	0.5	0.6
Contribution of group to the average offer rate	Quintile 1	0.167	0.167	0.173	0.178	0.172	0.176
	Quintile 2	0.196	0.176	0.181	0.192	0.183	0.186
	Quintile 3	0.204	0.205	0.215	0.217	0.210	0.207
	Quintile 4	0.275	0.277	0.267	0.271	0.268	0.264
	Quintile 5	0.482	0.472	0.464	0.452	0.460	0.459

P.9 18 year old offer rate by POLAR3 quintile

Note: The line for a group is not plotted when that group made fewer than 10 applications in any of the years from 2012-2017.

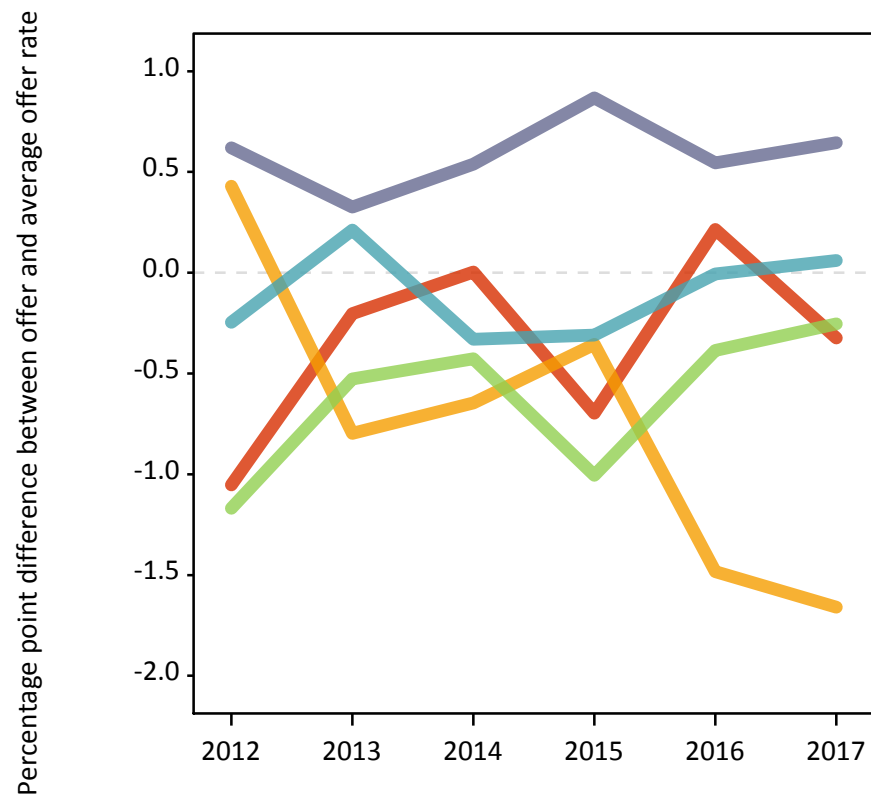
- Quintile 1
- Quintile 2
- Quintile 3
- Quintile 4
- Quintile 5



P.10 Percentage point difference between 18 year old offer rate and average offer rate by POLAR3 quintile

Note: The line for a group is not plotted when that group made fewer than 50 applications in any of the years from 2012-2017.

- Quintile 1
- Quintile 2
- Quintile 3
- Quintile 4
- Quintile 5



P.11 18 year old applicants by ethnic group

Statistic	Ethnic group	2012	2013	2014	2015	2016	2017
June deadline applicants	Asian	660	870	900	905	1,120	1,365
	Black	185	285	345	325	330	425
	Mixed	415	515	525	585	660	760
	White	13,660	15,010	14,730	15,000	15,870	17,485
	Other	80	90	115	120	130	170
Placed June deadline applicants	Asian	90	100	80	105	145	155
	Black	15	25	25	30	35	50
	Mixed	65	75	65	90	120	100
	White	2,515	2,640	2,535	2,650	3,085	2,965
	Other	5	10	10	10	15	15
All placed applicants	Asian	100	120	100	130	185	220
	Black	20	30	30	40	45	75
	Mixed	75	85	75	100	145	120
	White	2,720	2,910	2,835	2,990	3,505	3,370
	Other	5	10	10	15	25	25
June deadline applicants per 10,000 population	Asian	102.1	132.2	133.0	127.7	155.8	185.4
	Black	66.0	96.7	114.1	102.1	105.4	134.7
	Mixed	158.6	191.2	183.2	190.4	209.1	237.4
	White	211.6	238.5	238.8	240.7	262.4	294.6
	Other	92.7	97.0	122.5	125.5	130.6	165.0
Placed June deadline applicants per 10,000 population	Asian	13.6	15.2	11.9	14.7	20.0	21.2
	Black	5.0	8.4	8.2	9.7	11.2	16.5
	Mixed	24.2	27.4	22.2	28.9	38.5	30.5
	White	39.0	41.9	41.1	42.5	51.0	50.0
	Other	6.8	8.8	8.6	11.4	16.1	15.5
All placed applicants per 10,000 population	Asian	15.3	17.9	14.7	18.7	26.0	29.9
	Black	7.1	9.8	10.2	11.9	15.0	23.8
	Mixed	29.6	31.4	26.4	32.8	46.7	37.1
	White	42.1	46.3	46.0	48.0	57.9	56.8
	Other	7.9	9.9	10.7	16.6	23.1	26.2

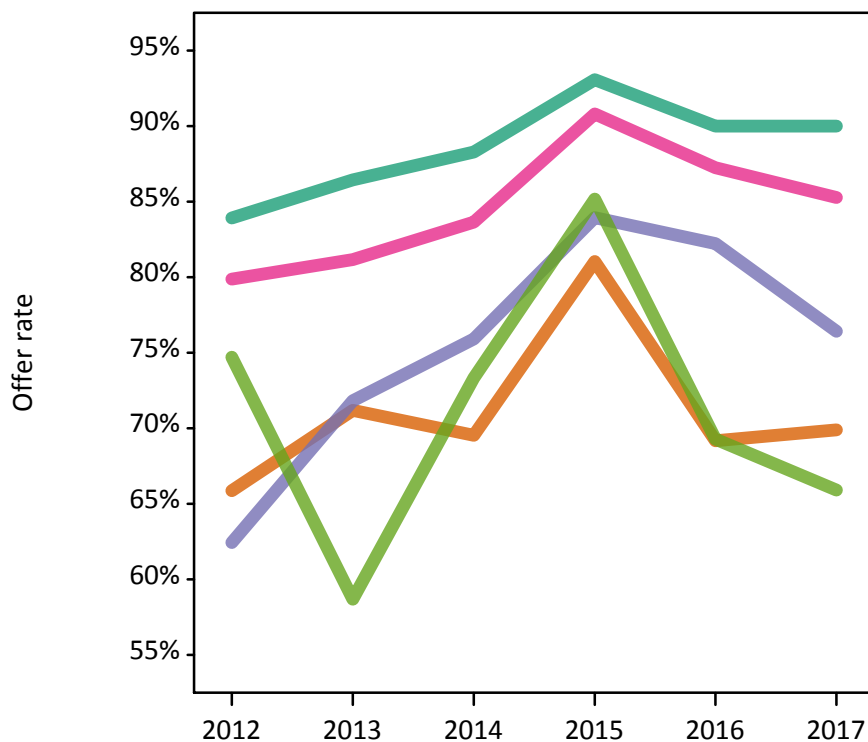
P.12 18 year old applications by ethnic group

Statistic	Ethnic group	2012	2013	2014	2015	2016	2017
June deadline applications	Asian	710	930	950	955	1,210	1,450
	Black	190	290	355	335	345	440
	Mixed	435	535	545	610	680	800
	White	14,645	15,885	15,660	15,795	16,840	18,510
	Other	85	90	120	130	140	180
Offers	Asian	470	660	660	775	835	1,015
	Black	120	210	270	280	280	335
	Mixed	350	435	455	555	595	685
	White	12,290	13,735	13,825	14,700	15,155	16,655
	Other	65	55	90	110	95	120
Offer rate	Asian	65.9%	71.2%	69.5%	81.0%	69.2%	69.9%
	Black	62.4%	71.8%	75.9%	83.9%	82.2%	76.4%
	Mixed	79.9%	81.2%	83.6%	90.8%	87.2%	85.3%
	White	83.9%	86.4%	88.3%	93.1%	90.0%	90.0%
	Other	74.7%	58.7%	73.3%	85.2%	69.3%	65.9%
Average offer rate	Asian	67.6%	71.7%	70.8%	83.0%	70.6%	69.9%
	Black	71.5%	75.7%	79.6%	88.4%	81.5%	80.0%
	Mixed	78.6%	82.3%	82.8%	91.4%	87.0%	85.7%
	White	83.8%	86.2%	88.1%	92.8%	89.9%	89.9%
	Other	75.0%	66.4%	77.1%	85.7%	69.9%	68.3%
Percentage point difference between offer rate and average offer rate	Asian	-1.7	-0.5	-1.3	-1.9	-1.4	0.0
	Black	-9.0	-3.9	-3.7	-4.5	0.7	-3.6
	Mixed	1.3	-1.1	0.8	-0.6	0.2	-0.4
	White	0.2	0.2	0.2	0.2	0.1	0.1
	Other	-0.3	-7.7	-3.8	-0.6	-0.6	-2.4
Contribution of group to the average offer rate	Asian	0.136	0.154	0.156	0.168	0.178	0.201
	Black	0.113	0.127	0.103	0.103	0.100	0.100
	Mixed	0.097	0.092	0.078	0.085	0.094	0.093
	White	0.916	0.906	0.900	0.896	0.888	0.881
	Other	0.059	0.063	0.052	0.074	0.067	0.066

P.13 18 year old offer rate by ethnic group

Note: The line for a group is not plotted when that group made fewer than 10 applications in any of the years from 2012-2017.

- Asian
- Black
- Mixed
- White
- Other



P.14 Percentage point difference between 18 year old offer rate and average offer rate by ethnic group

Note: The line for a group is not plotted when that group made fewer than 50 applications in any of the years from 2012-2017.

- Asian
- Black
- Mixed
- White
- Other



P.15 Applicants (all ages)

Statistic	2012	2013	2014	2015	2016	2017
June deadline applicants	20,680	23,805	23,860	24,095	25,660	27,825
Placed June deadline applicants	3,585	3,920	3,880	4,130	4,625	4,430
All placed applicants	3,925	4,350	4,340	4,655	5,295	5,200

P.16 Applications (all ages)

Statistic	2012	2013	2014	2015	2016	2017
June deadline applications	22,305	25,460	25,490	25,575	27,475	29,630
Offers	16,460	19,485	19,810	21,510	21,855	23,625
Offer rate	73.8%	76.5%	77.7%	84.1%	79.6%	79.7%

P.17 Applicants (all ages) by sex

Statistic	Sex	2012	2013	2014	2015	2016	2017
June deadline applicants	Men	10,555	12,170	12,060	11,780	12,285	13,165
	Women	10,125	11,635	11,800	12,315	13,375	14,660
Placed June deadline applicants	Men	1,795	2,020	2,005	1,945	2,185	2,145
	Women	1,790	1,900	1,875	2,185	2,435	2,285
All placed applicants	Men	1,955	2,255	2,245	2,205	2,490	2,550
	Women	1,970	2,095	2,095	2,455	2,810	2,650

P.18 Applications (all ages) by sex

Statistic	Sex	2012	2013	2014	2015	2016	2017
June deadline applications	Men	11,500	13,145	12,985	12,615	13,175	14,105
	Women	10,805	12,315	12,500	12,960	14,300	15,525
Offers	Men	8,225	9,995	10,100	10,530	10,410	11,145
	Women	8,235	9,490	9,710	10,980	11,450	12,480
Offer rate	Men	71.5%	76.0%	77.8%	83.5%	79.0%	79.0%
	Women	76.2%	77.1%	77.7%	84.7%	80.1%	80.4%

P.19 Applicants (all ages) by POLAR3 quintile

Statistic	POLAR3 quintile	2012	2013	2014	2015	2016	2017
June deadline applicants	Quintile 1	1,700	2,045	2,165	2,340	2,445	2,690
	Quintile 2	2,420	2,805	2,945	3,155	3,155	3,530
	Quintile 3	3,185	3,725	3,880	3,910	4,110	4,475
	Quintile 4	4,795	5,520	5,395	5,375	5,805	6,205
	Quintile 5	8,535	9,640	9,425	9,275	10,085	10,835
Placed June deadline applicants	Quintile 1	275	330	375	360	455	430
	Quintile 2	435	480	440	505	545	540
	Quintile 3	535	595	625	645	760	680
	Quintile 4	845	945	845	915	1,010	975
	Quintile 5	1,490	1,565	1,590	1,695	1,845	1,790
All placed applicants	Quintile 1	305	365	405	390	505	485
	Quintile 2	470	510	490	560	635	625
	Quintile 3	590	650	695	725	845	800
	Quintile 4	915	1,045	950	1,025	1,155	1,150
	Quintile 5	1,640	1,770	1,790	1,950	2,150	2,130

P.20 Applications (all ages) by POLAR3 quintile

Statistic	POLAR3 quintile	2012	2013	2014	2015	2016	2017
June deadline applications	Quintile 1	1,915	2,280	2,410	2,540	2,725	2,955
	Quintile 2	2,690	3,065	3,200	3,405	3,445	3,805
	Quintile 3	3,460	4,005	4,150	4,150	4,465	4,775
	Quintile 4	5,115	5,870	5,725	5,660	6,130	6,565
	Quintile 5	9,075	10,175	9,950	9,775	10,650	11,435
Offers	Quintile 1	1,235	1,595	1,755	1,940	2,000	2,180
	Quintile 2	1,860	2,255	2,360	2,670	2,550	2,810
	Quintile 3	2,430	2,920	3,180	3,400	3,460	3,740
	Quintile 4	3,835	4,585	4,435	4,805	4,925	5,285
	Quintile 5	7,070	8,090	8,040	8,655	8,885	9,550
Offer rate	Quintile 1	64.6%	70.0%	72.8%	76.4%	73.3%	73.7%
	Quintile 2	69.1%	73.6%	73.8%	78.4%	74.1%	73.9%
	Quintile 3	70.2%	72.8%	76.6%	82.0%	77.5%	78.3%
	Quintile 4	74.9%	78.1%	77.5%	84.9%	80.3%	80.5%
	Quintile 5	77.9%	79.5%	80.8%	88.5%	83.4%	83.5%

P.21 Applicants (all ages) by ethnic group

Statistic	Ethnic group	2012	2013	2014	2015	2016	2017
June deadline applicants	Asian	1,190	1,565	1,685	1,570	1,955	2,240
	Black	445	595	635	650	680	815
	Mixed	630	795	830	890	995	1,080
	White	18,095	20,540	20,385	20,580	21,580	23,145
	Other	165	180	205	235	255	320
Placed June deadline applicants	Asian	135	150	155	175	225	245
	Black	30	45	45	55	65	75
	Mixed	90	110	105	135	170	140
	White	3,295	3,590	3,540	3,730	4,125	3,915
	Other	15	15	15	15	25	25
All placed applicants	Asian	150	180	185	215	290	350
	Black	35	50	55	70	80	120
	Mixed	105	125	125	150	200	170
	White	3,590	3,960	3,940	4,180	4,665	4,480
	Other	20	20	20	20	35	45

P.22 Applications (all ages) by ethnic group

Statistic	Ethnic group	2012	2013	2014	2015	2016	2017
June deadline applications	Asian	1,290	1,665	1,775	1,655	2,100	2,385
	Black	470	615	665	670	710	850
	Mixed	670	825	860	925	1,040	1,135
	White	19,530	22,015	21,845	21,895	23,140	24,680
	Other	175	195	220	250	270	340
Offers	Asian	675	955	1,025	1,160	1,235	1,430
	Black	205	335	405	430	425	490
	Mixed	470	605	630	755	825	880
	White	14,910	17,415	17,555	18,880	19,100	20,490
	Other	90	95	135	165	155	180
Offer rate	Asian	52.3%	57.4%	57.7%	70.0%	58.8%	59.9%
	Black	43.7%	54.5%	60.9%	63.8%	59.7%	57.7%
	Mixed	69.9%	73.4%	73.2%	81.9%	79.1%	77.6%
	White	76.3%	79.1%	80.4%	86.2%	82.5%	83.0%
	Other	52.9%	48.2%	60.7%	66.4%	57.4%	53.5%

Technical Notes and Definitions

UCAS undergraduate scheme

Adjustment

Adjustment allows applicants who have met and exceeded the terms of their conditional firm offer to seek and find a place at another provider whilst keeping their place at their original firm choice provider.

Clearing

Clearing is a route for applicants that are not placed and holding no offers to find a place on courses with vacancies.

Cycle year

The UCAS application cycle which runs from September to October the following year. For example the 2017 cycle runs from September 2016 through to October 2017.

End of cycle

The point in the cycle to which the numbers in this report refer, and the point at which the cycle is closed such that no more applications or offers can be made, and no more applicants can be placed. Numbers reported at the end of cycle exclude information on a small number of applicants who cancelled during the cycle.

Extra

Applicants who are unsuccessful in obtaining an offer or decline all offers may be eligible to apply through Extra, where they can apply to one further course at a time. Extra operates from 25 February until early July. It provides applicants who are eligible the possibility of obtaining an offer before exam results are published and Clearing starts.

June 30 deadline

The deadline for main scheme applications. Applicants who apply after this date will go directly into Clearing.

Record of Prior Acceptance (RPA)

RPA is an acceptance route used when a provider informs UCAS of applicants it has accepted outside of the normal application process (e.g. individuals who have applied directly to the provider).

Reporting groups

Ethnic group

High level grouping of ethnic origin as declared by the applicant: 'White', 'Black', 'Asian', 'Mixed', 'Other', 'Unknown'. Applicants who declare themselves as 'Unknown' ethnic origin are not reported in these tables, but are included in the associated csv data file.

POLAR3 quintile

Developed by HEFCE, POLAR3 classifies small areas across the UK into five groups according to their level of young participation in Higher Education. Each of these groups represents around 20 per cent of young people and is ranked from Quintile 1 (areas with the lowest young participation rates, considered as the most disadvantaged) to Quintile 5 (highest young participation rates, considered most advantaged). POLAR3 is based on the participation rates of young people between 2005 and 2009 who entered Higher Education between 2005-06 and 2010-11, therefore is most suitable for applicants aged 19 and under. These groups are assigned using the postcode declared by the applicant at the time of their application. If a UK postcode is invalid, considered unsafe for measurement or there is no link to Census geography possible then the applicant is not assigned to a quintile. Applicants with no POLAR3 quintile are not reported.

Sex

Sex as declared by the applicant.

SIMD 2016 quintile

Scottish index of multiple deprivation (SIMD) identifies small area concentrations of multiple deprivation across all of Scotland, providing a relative measure of deprivation amongst 6505 small areas (data zones) based on 7 socio-economic domains. These small areas are classified into five groups ranked from Quintile 1 (considered the most deprived) to Quintile 5 (considered least deprived), with equal populations in each quintile. Quintiles are assigned using the postcode declared by the applicant, applicants declaring invalid postcodes are classified as 'Not assigned' and are not reported.

SIMD is only defined for applicants domiciled in Scotland, therefore any applicants domiciled outside of Scotland cannot be assigned to an SIMD quintile and so are not reported for this measure.

SIMD is only reported for providers in Scotland. Application and entry rates by SIMD are reported in the 2017 End of Cycle Report and the 2017 cycle January deadline application rate report.

Statistics reported in the tables

All placed applicants

The number of applicants placed for entry into higher education at the provider through one of their choices, including any choices made through Extra, or via Adjustment, Clearing or RPA.

All placed applicants per 10,000 population

The number of total UK domiciled 18 year old placed applicants for entry into higher education at the provider divided by the number of UK 18 year olds in the population, multiplied by 10,000. This gives the number of 18 year olds, for every 10,000 in the population, that were placed at the provider through one of their choices, including any choices made through Extra, or via Adjustment, Clearing or RPA. It is an alternative way of expressing the entry rate to a provider. By referencing the underlying population this statistic shows how the number of placed applicants is changing in relation to the available pool of potential applicants and so gives the chance that somebody from the group will be placed at a provider.

This statistic is only reported for 18 year olds.

Average offer rate

The offer rate that you might expect if the predicted grades and subject choice of applicants were the only factors that influenced whether an applicant was made an offer by the provider. The average offer rate is calculated by dividing applicants according to their specific combination of grades (for A levels the best three predicted grades are used, for BTECs, International Baccalaureate and Scottish Highers and Advanced Highers, predicted grades along with any grades already achieved upon applying are used) and subject choice. For each combination the number of main scheme offers is divided by the number of main scheme applications, to give an overall offer rate. This is then multiplied by the number of applications made by the group for which the average offer rate is being calculated (for example POLAR3 quintile 1), to give an average number of offers for that group. These average number of offers are then added together across all combinations of predicted grade and subject and divided by the number of main scheme applications from the group to give the average offer rate.

The average offer rate does not attempt to control for any other factors that may play a part in the decision to make an offer, such as the subject of the qualifications studied, their relevance to a course, or the grade in each subject; higher numbers of A levels being studied; the exact profile of grades predicted; personal statements; teacher references; interviews; or any other criteria (such as work experience or portfolios) that may be part of the admissions decision.

This statistic is only reported for 18 year olds.

Contribution of group to the average offer rate

The way in which the average offer rate is defined means that the pattern of application and offers of a group (for example POLAR3 quintile 1) will always contribute, in part, to the average offer rate for that group. When this contribution is large, the average offer rate will mainly reflect the patterns for the group, meaning that the value of the average offer rate will be similar to the offer rate, the percentage point difference statistic will be small, and any real difference between the offer rate and what might be expected given the predicted grades and subject choices of the applicants will be difficult to detect.

Values of the contribution of group to the average offer rate range between 0 and 1. The closer the value is to 1 the greater the contribution a group makes to its own average offer rate.

This statistic is only reported for 18 year olds.

Placed June deadline applicants

An applicant who has been placed for entry into higher education at the provider through a June deadline application.

Placed June deadline applicants per 10,000 population

The number of UK domiciled 18 year old placed June deadline applicants at the provider divided by the number of UK 18 year olds in the population, multiplied by 10,000. This gives the number of 18 year olds, for every 10,000 in the population, that were placed at the provider through one of their June deadline applications. It is an alternative way of expressing the entry rate to a provider, but for placed June deadline applicants only. By referencing the underlying population this statistic shows how the number of placed June deadline applicants is changing in relation to the available pool of potential 18 year old applicants and so gives the chance that somebody from the group will be placed at a provider through a June deadline application.

This statistic is only reported for 18 year olds.

June deadline applications

An application (or choice) to a course in higher education to the provider that is made by the June 30 deadline. Each applicant can make up to five choices this way. The number of June deadline applications does not include choices made through the following routes: Clearing, Extra, Adjustment and RPAs. Applications made to October deadline courses received after the October deadline are not included in these statistics.

June deadline applicants

The number of applicants that made at least one application to the provider by the June 30 deadline.

June deadline applicants per 10,000 population

The number of UK domiciled 18 year old June deadline applicants to the provider divided by the number of UK 18 year olds in the population, multiplied by 10,000. This gives the number of 18 year olds, for every 10,000 in the population, who applied by the June 30 deadline. It is equivalent to the application rate. By referencing the underlying population this statistic shows how the number of June deadline applicants is changing in relation to the available pool of potential 18 year old applicants and so gives the chance that somebody from the group will apply to a provider by the June 30 deadline.

This statistic is only reported for 18 year olds.

Offers

An offer is defined as a provider's decision in response to an application to offer a place to an applicant, often subject to the applicant satisfying academic and/or other criteria, via a June deadline application (i.e. does not cover choices made through the following routes: Clearing, Extra, Adjustment and RPAs).

Offer rate

The number of offers made divided by the number of June deadline applications. This gives the proportion of all June deadline applications to the provider that received an offer.

Percentage point difference between offer rate and average offer rate

The offer rate minus the average offer rate.

The percentage point difference can be compared to the expected range of statistical variation resulting from the calculation of the average offer rate using the Average Offer Rate Lookup Table. Where the value of the percentage point difference lies outside of this range, the percentage point difference may be considered to represent a real difference between the offer rate and the average offer rate.

Other definitions

Age

This analysis uses country-specific age definitions that align with the cut off points for school and college cohorts within the different administrations of the UK. For England and Wales, ages are defined on the 31 August, for Northern Ireland on the 1 July and for Scotland on the 28 February the following year. Defining ages in this way matches the assignment of children to school cohorts. For applicants outside of the UK a cohort cut off of 31 August has been used. Numbers for applicants aged 17 and under are included in the tables that report numbers for all age groups. Providers in Scotland typically receive a higher proportion of applicants aged 17 and under compared to providers elsewhere in the UK.

Provider

A higher education provider - a university or college.

UK domiciled

Declared area of permanent residence within England, Northern Ireland, Scotland and Wales. Applicants from the Channel Islands and Isle of Man are not included.