

L79 Loughborough University

Cycle years: 2012 - 2017

Cycle Reference Point: End of Cycle

Applicant coverage: UK domiciled

Reporting groups: Sex, POLAR3, ethnic group

Applicant statistics: June deadline applicants, placed June deadline applicants, all placed applicants, June deadline applicants per 10,000 population, placed June deadline applicants per 10,000 population, all placed applicants per 10,000 population

Application statistics: June deadline applications, offers, offer rate, average offer rate, percentage point difference between offer rate and average offer rate, contribution of group to the average offer rate

Non-disclosure controls: To avoid the disclosure of information about any individual the following measures are taken

- Applicants, placed applicants, applications and offers are rounded to the nearest 5.
- Applicants/placed applicants per 10,000 population figures are reported as 0 if the applicant/placed applicant figures are rounded to 0.
- All statistics related to the offer rate are not reported when the number of applications for a group is less than 10. The percentage point difference between the offer rate and the average offer rate is not reported when the number of applications for a group is less than 50.
- Offer rates are reported as 0% if there are fewer than 5 offers, and 100% if the number of offers is within 5 of the number of applications. When the offer rate is reported as 0% or 100%, it is reported in italics.

Contents:

18 year old applicants:	P.1
18 year old applications:	P.2
18 year old applicants by sex:	P.3
18 year old applications by sex:	P.4
18 year old applicants by POLAR3 quintile:	P.7
18 year old applications by POLAR3 quintile:	P.8
18 year old applicants by ethnic group:	P.11
18 year old applications by ethnic group:	P.12
Applicants (all ages):	P.15
Applications (all ages):	P.16
Applicants (all ages) by sex:	P.17
Applications (all ages) by sex:	P.18
Applicants (all ages) by POLAR3 quintile:	P.19
Applications (all ages) by POLAR3 quintile:	P.20
Applicants (all ages) by ethnic group:	P.21
Applications (all ages) by ethnic group:	P.22

P.1 18 year old applicants

Statistic	2012	2013	2014	2015	2016	2017
June deadline applicants	12,560	12,795	14,785	15,180	17,960	19,370
Placed June deadline applicants	2,095	2,640	2,165	2,540	2,355	2,420
All placed applicants	2,210	2,730	2,280	2,650	2,440	2,530
June deadline applicants per 10,000 population	162.4	168.1	196.3	198.1	239.6	261.5
Placed June deadline applicants per 10,000	27.1	34.7	28.7	33.2	31.4	32.7
All placed applicants per 10,000 population	28.5	35.9	30.3	34.6	32.6	34.1

P.2 18 year old applications

Statistic	2012	2013	2014	2015	2016	2017
June deadline applications	13,215	13,400	15,550	15,930	18,735	20,285
Offers	10,805	11,480	13,015	12,925	14,865	15,805
Offer rate	81.8%	85.7%	83.7%	81.1%	79.3%	77.9%

P.3 18 year old applicants by sex

Statistic	Sex	2012	2013	2014	2015	2016	2017
June deadline applicants	Men	7,885	8,055	9,140	9,095	11,140	11,995
	Women	4,675	4,740	5,645	6,085	6,820	7,375
Placed June deadline applicants	Men	1,345	1,650	1,350	1,500	1,410	1,450
	Women	755	995	815	1,040	945	975
All placed applicants	Men	1,405	1,690	1,415	1,560	1,460	1,515
	Women	800	1,035	865	1,090	980	1,015
June deadline applicants per 10,000 population	Men	198.9	206.3	236.2	231.7	290.0	315.8
	Women	124.0	127.9	154.2	162.9	186.6	204.3
Placed June deadline applicants per 10,000 population	Men	33.9	42.2	34.9	38.3	36.7	38.1
	Women	20.0	26.8	22.3	27.8	25.9	26.9
All placed applicants per 10,000 population	Men	35.5	43.3	36.6	39.7	38.0	39.9
	Women	21.3	28.0	23.6	29.2	26.8	28.1

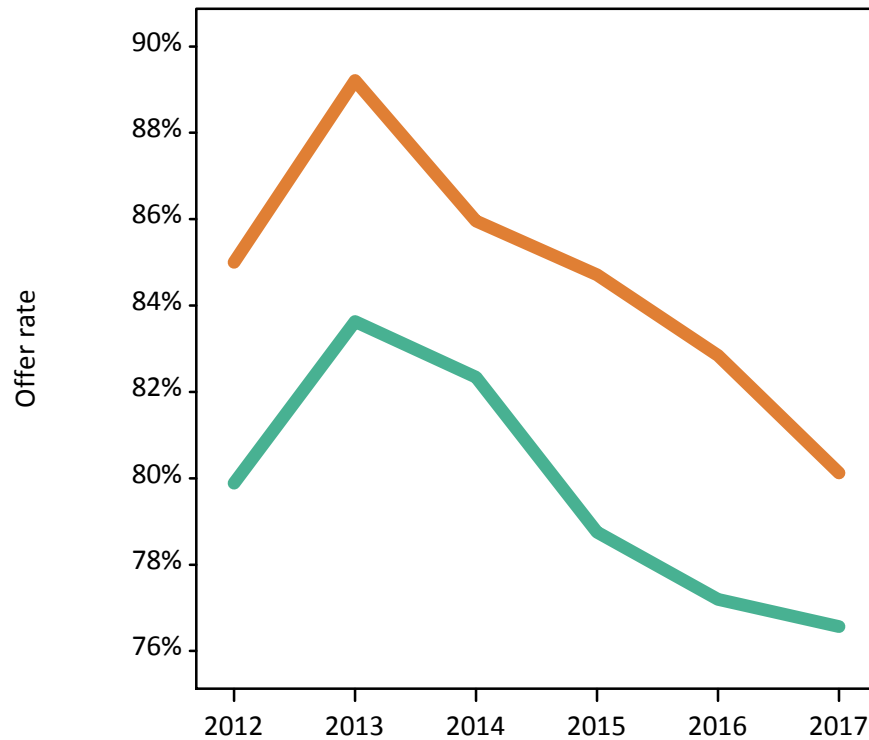
P.4 18 year old applications by sex

Statistic	Sex	2012	2013	2014	2015	2016	2017
June deadline applications	Men	8,370	8,485	9,690	9,570	11,650	12,595
	Women	4,845	4,915	5,860	6,360	7,085	7,695
Offers	Men	6,685	7,095	7,980	7,535	8,995	9,640
	Women	4,120	4,385	5,040	5,385	5,870	6,165
Offer rate	Men	79.9%	83.6%	82.3%	78.8%	77.2%	76.6%
	Women	85.0%	89.2%	86.0%	84.7%	82.8%	80.1%
Average offer rate	Men	80.5%	84.0%	82.4%	79.0%	77.4%	76.8%
	Women	83.9%	88.6%	85.9%	84.3%	82.5%	79.7%
Percentage point difference between offer rate and average offer rate	Men	-0.6	-0.3	-0.1	-0.3	-0.2	-0.3
	Women	1.1	0.6	0.1	0.4	0.3	0.4
Contribution of group to the average offer rate	Men	0.730	0.730	0.726	0.706	0.708	0.714
	Women	0.535	0.535	0.546	0.558	0.519	0.532

P.5 18 year old offer rate by sex

Note: The line for a group is not plotted when that group made fewer than 10 applications in any of the years from 2012-2017.

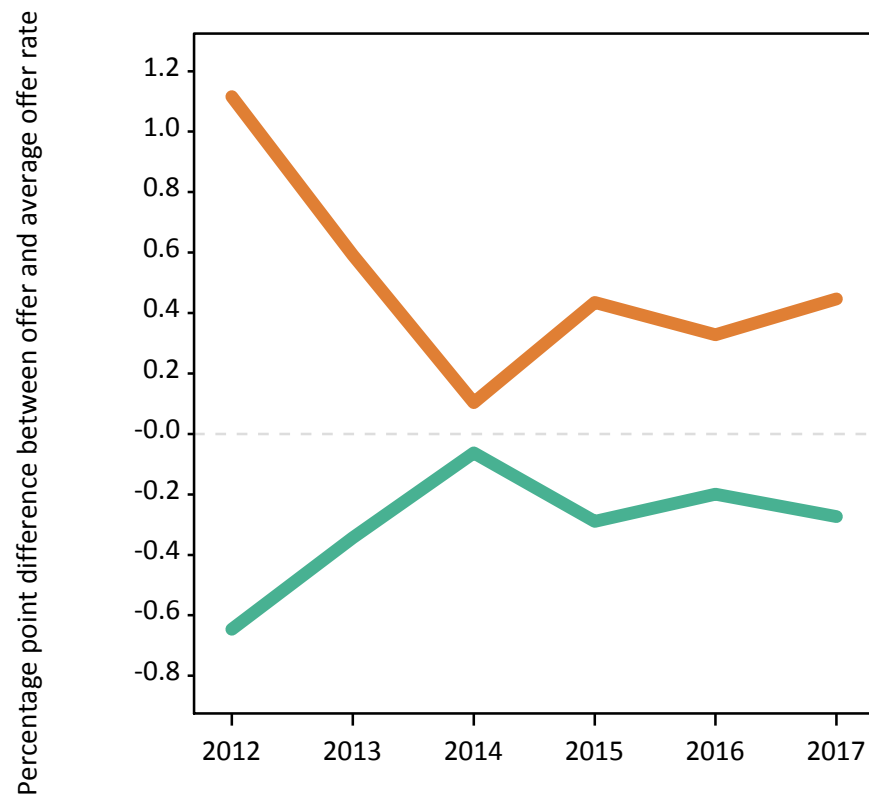
Men
Women



P.6 Percentage point difference between 18 year old offer rate and average offer rate by sex

Note: The line for a group is not plotted when that group made fewer than 50 applications in any of the years from 2012-2017.

Men
Women



P.7 18 year old applicants by POLAR3 quintile

Statistic	POLAR3 quintile	2012	2013	2014	2015	2016	2017
June deadline applicants	Quintile 1	800	860	1,005	1,035	1,295	1,440
	Quintile 2	1,470	1,605	1,825	1,840	2,265	2,370
	Quintile 3	2,205	2,105	2,560	2,760	3,125	3,425
	Quintile 4	3,060	3,210	3,590	3,775	4,415	4,775
	Quintile 5	4,995	4,990	5,780	5,745	6,815	7,305
Placed June deadline applicants	Quintile 1	125	170	125	165	170	175
	Quintile 2	235	295	270	260	295	275
	Quintile 3	355	435	345	410	400	400
	Quintile 4	540	670	530	660	600	615
	Quintile 5	840	1,070	895	1,040	885	950
All placed applicants	Quintile 1	130	170	125	170	175	180
	Quintile 2	245	300	280	275	305	280
	Quintile 3	370	445	360	425	415	420
	Quintile 4	575	690	555	680	620	640
	Quintile 5	890	1,115	955	1,090	920	1,000
June deadline applicants per 10,000 population	Quintile 1	56.2	61.6	72.1	73.9	95.8	108.2
	Quintile 2	97.9	109.0	124.9	123.8	156.7	166.9
	Quintile 3	142.7	138.0	170.0	179.7	207.7	229.8
	Quintile 4	192.9	205.2	233.0	241.3	286.1	312.6
	Quintile 5	297.4	301.7	354.4	343.1	412.5	444.7
Placed June deadline applicants per 10,000 population	Quintile 1	8.6	12.1	8.8	11.6	12.5	13.0
	Quintile 2	15.7	20.0	18.4	17.6	20.3	19.3
	Quintile 3	22.9	28.4	22.9	26.6	26.6	26.8
	Quintile 4	34.1	42.9	34.4	42.2	38.8	40.4
	Quintile 5	50.0	64.6	55.0	62.2	53.6	57.7
All placed applicants per 10,000 population	Quintile 1	9.0	12.3	9.1	12.2	12.8	13.5
	Quintile 2	16.3	20.4	19.3	18.6	21.0	19.8
	Quintile 3	23.8	29.1	23.9	27.6	27.6	28.1
	Quintile 4	36.2	44.2	36.1	43.4	40.1	41.9
	Quintile 5	53.0	67.4	58.6	65.2	55.7	60.8

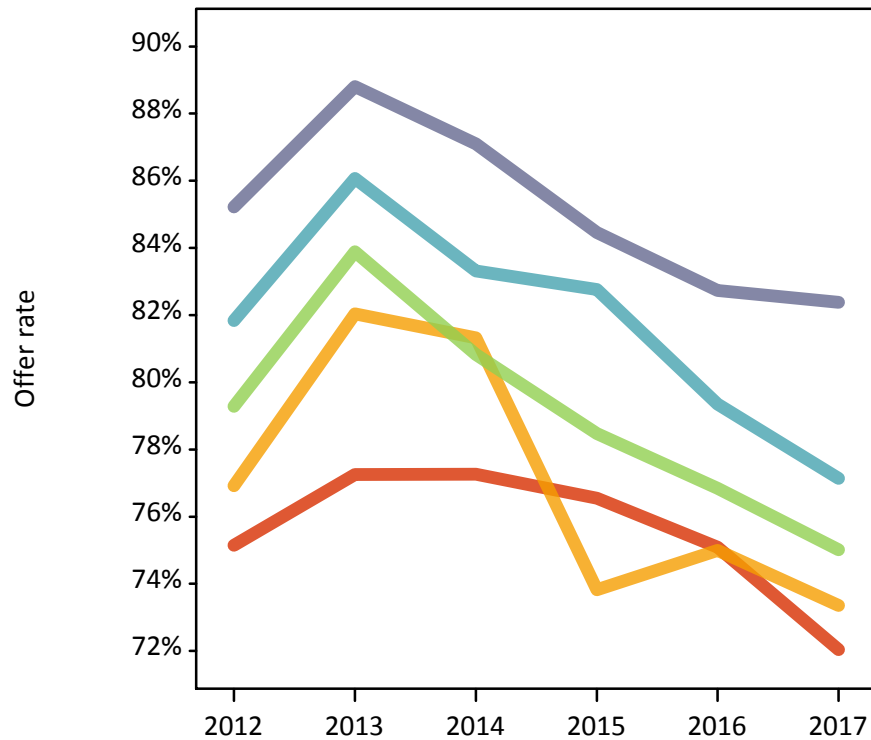
P.8 18 year old applications by POLAR3 quintile

Statistic	POLAR3 quintile	2012	2013	2014	2015	2016	2017
June deadline applications	Quintile 1	845	895	1,070	1,065	1,345	1,505
	Quintile 2	1,545	1,665	1,915	1,920	2,350	2,480
	Quintile 3	2,290	2,190	2,685	2,865	3,260	3,560
	Quintile 4	3,215	3,390	3,780	3,995	4,610	4,985
	Quintile 5	5,285	5,225	6,070	6,050	7,110	7,685
Offers	Quintile 1	635	695	825	815	1,010	1,085
	Quintile 2	1,190	1,365	1,560	1,415	1,765	1,820
	Quintile 3	1,815	1,840	2,170	2,250	2,505	2,670
	Quintile 4	2,630	2,915	3,150	3,310	3,660	3,845
	Quintile 5	4,505	4,640	5,285	5,110	5,885	6,330
Offer rate	Quintile 1	75.1%	77.3%	77.3%	76.5%	75.1%	72.0%
	Quintile 2	76.9%	82.0%	81.3%	73.8%	75.0%	73.4%
	Quintile 3	79.3%	83.9%	80.8%	78.5%	76.8%	75.0%
	Quintile 4	81.8%	86.1%	83.3%	82.8%	79.4%	77.1%
	Quintile 5	85.2%	88.8%	87.1%	84.5%	82.7%	82.4%
Average offer rate	Quintile 1	75.4%	78.2%	76.8%	76.1%	74.5%	71.7%
	Quintile 2	77.4%	83.0%	81.7%	75.8%	75.4%	73.5%
	Quintile 3	80.6%	84.6%	81.6%	79.5%	78.0%	76.2%
	Quintile 4	81.8%	85.9%	83.3%	82.1%	79.4%	77.9%
	Quintile 5	84.5%	88.1%	86.7%	83.9%	82.2%	81.4%
Percentage point difference between offer rate and average offer rate	Quintile 1	-0.2	-1.0	0.5	0.5	0.6	0.3
	Quintile 2	-0.5	-1.0	-0.4	-2.0	-0.4	-0.2
	Quintile 3	-1.3	-0.8	-0.8	-1.0	-1.1	-1.1
	Quintile 4	-0.0	0.2	-0.0	0.7	-0.0	-0.8
	Quintile 5	0.7	0.7	0.4	0.6	0.5	1.0
Contribution of group to the average offer rate	Quintile 1	0.139	0.145	0.140	0.129	0.127	0.131
	Quintile 2	0.181	0.185	0.177	0.184	0.176	0.170
	Quintile 3	0.228	0.217	0.227	0.227	0.214	0.214
	Quintile 4	0.290	0.296	0.281	0.292	0.279	0.277
	Quintile 5	0.450	0.438	0.439	0.428	0.423	0.423

P.9 18 year old offer rate by POLAR3 quintile

Note: The line for a group is not plotted when that group made fewer than 10 applications in any of the years from 2012-2017.

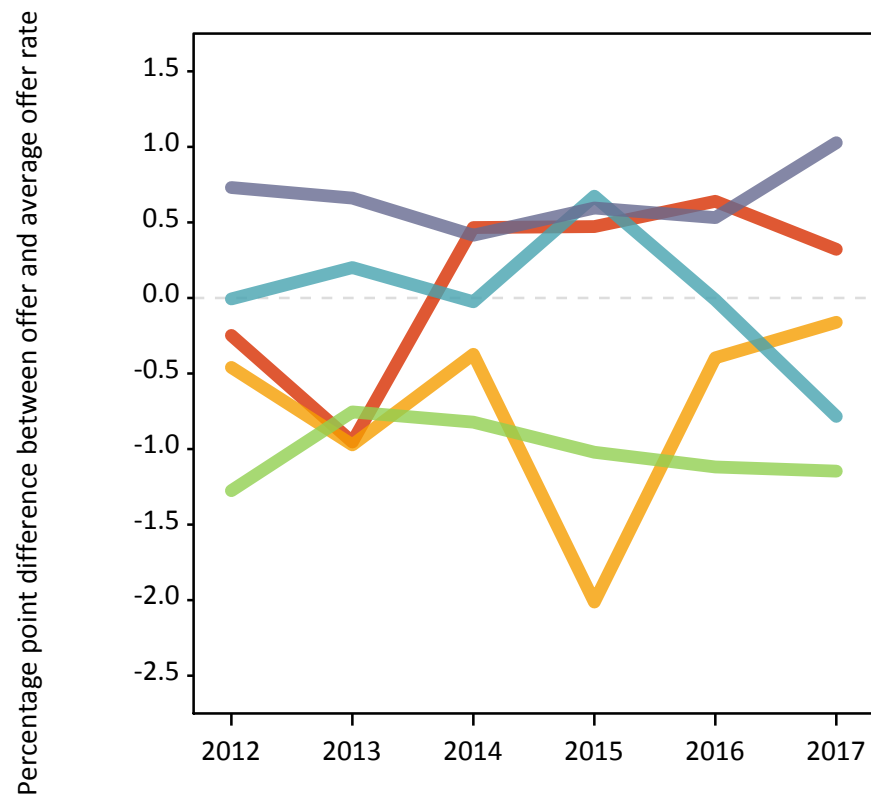
- Quintile 1
- Quintile 2
- Quintile 3
- Quintile 4
- Quintile 5



P.10 Percentage point difference between 18 year old offer rate and average offer rate by POLAR3 quintile

Note: The line for a group is not plotted when that group made fewer than 50 applications in any of the years from 2012-2017.

- Quintile 1
- Quintile 2
- Quintile 3
- Quintile 4
- Quintile 5



P.11 18 year old applicants by ethnic group

Statistic	Ethnic group	2012	2013	2014	2015	2016	2017
June deadline applicants	Asian	1,135	1,280	1,420	1,515	1,945	2,285
	Black	625	690	885	1,020	1,300	1,420
	Mixed	440	480	610	645	780	960
	White	10,225	10,205	11,700	11,765	13,640	14,380
	Other	95	100	120	160	195	225
Placed June deadline applicants	Asian	140	205	155	185	180	230
	Black	95	125	95	130	135	155
	Mixed	65	90	75	110	90	125
	White	1,790	2,205	1,820	2,085	1,925	1,885
	Other	10	10	10	15	20	10
All placed applicants	Asian	150	215	175	200	195	250
	Black	100	135	110	140	145	160
	Mixed	65	105	75	115	90	130
	White	1,880	2,255	1,905	2,165	1,975	1,955
	Other	10	10	10	15	20	15
June deadline applicants per 10,000 population	Asian	175.0	193.9	209.5	214.2	270.4	310.7
	Black	221.2	232.4	292.6	321.1	415.2	450.9
	Mixed	168.2	177.5	211.7	209.5	247.2	299.4
	White	158.4	162.2	189.7	188.9	225.5	242.3
	Other	106.2	110.3	128.9	163.9	197.0	216.5
Placed June deadline applicants per 10,000 population	Asian	21.5	30.9	23.0	26.1	25.0	31.1
	Black	33.0	42.4	32.0	41.2	42.5	48.9
	Mixed	24.2	34.0	26.4	36.3	28.0	38.6
	White	27.7	35.0	29.5	33.5	31.8	31.8
	Other	9.0	9.9	11.8	16.6	19.1	11.6
All placed applicants per 10,000 population	Asian	23.2	32.9	25.8	28.3	27.4	34.3
	Black	35.5	45.5	35.6	44.0	46.0	50.8
	Mixed	25.3	38.1	26.8	37.9	29.2	40.2
	White	29.1	35.9	30.9	34.7	32.7	33.0
	Other	10.2	11.0	12.9	16.6	20.1	13.6

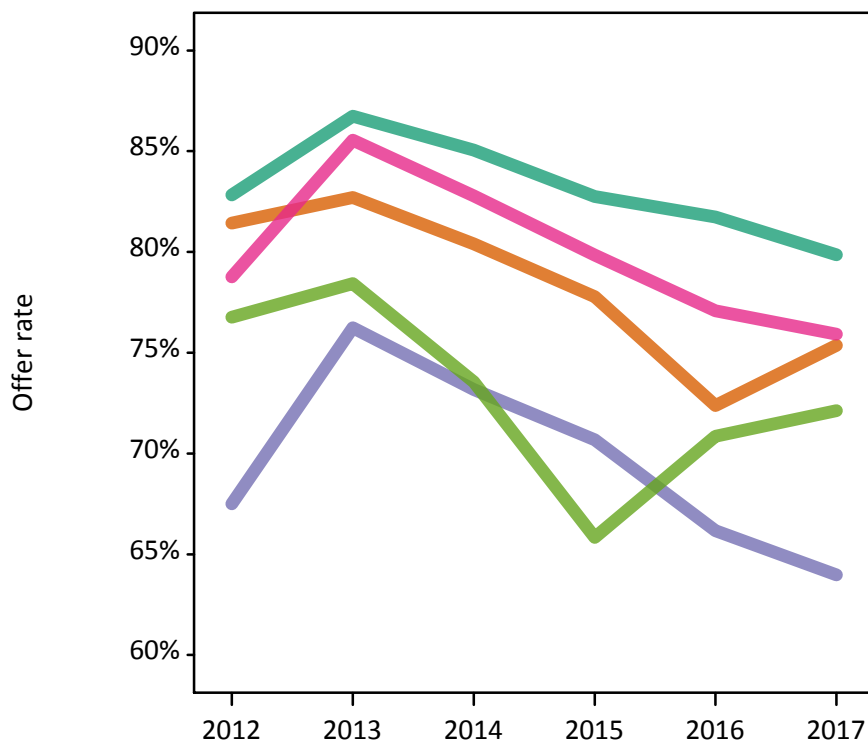
P.12 18 year old applications by ethnic group

Statistic	Ethnic group	2012	2013	2014	2015	2016	2017
June deadline applications	Asian	1,175	1,310	1,465	1,555	1,985	2,330
	Black	635	705	905	1,040	1,335	1,450
	Mixed	450	500	640	660	795	1,005
	White	10,805	10,740	12,370	12,435	14,320	15,170
	Other	100	100	120	160	200	225
Offers	Asian	955	1,085	1,175	1,210	1,435	1,755
	Black	430	535	665	735	885	925
	Mixed	355	425	530	525	610	765
	White	8,950	9,320	10,520	10,290	11,705	12,115
	Other	75	80	90	105	140	165
Offer rate	Asian	81.4%	82.7%	80.4%	77.8%	72.4%	75.4%
	Black	67.5%	76.2%	73.2%	70.7%	66.2%	64.0%
	Mixed	78.8%	85.5%	82.8%	79.8%	77.1%	75.9%
	White	82.8%	86.7%	85.1%	82.8%	81.7%	79.9%
	Other	76.8%	78.4%	73.6%	65.8%	70.9%	72.1%
Average offer rate	Asian	82.8%	84.0%	82.2%	79.0%	75.0%	76.5%
	Black	71.6%	79.2%	76.0%	74.3%	70.8%	69.9%
	Mixed	78.2%	85.5%	83.1%	80.9%	78.2%	76.2%
	White	82.5%	86.4%	84.6%	82.2%	80.9%	79.1%
	Other	77.4%	83.5%	77.1%	71.7%	73.1%	73.5%
Percentage point difference between offer rate and average offer rate	Asian	-1.3	-1.4	-1.8	-1.2	-2.7	-1.1
	Black	-4.1	-3.0	-2.8	-3.6	-4.6	-5.9
	Mixed	0.6	0.0	-0.3	-1.1	-1.1	-0.3
	White	0.4	0.4	0.5	0.6	0.8	0.8
	Other	-0.6	-5.1	-3.5	-5.9	-2.2	-1.4
Contribution of group to the average offer rate	Asian	0.183	0.178	0.178	0.185	0.190	0.193
	Black	0.151	0.170	0.153	0.162	0.149	0.152
	Mixed	0.097	0.100	0.099	0.098	0.084	0.094
	White	0.840	0.825	0.817	0.805	0.791	0.776
	Other	0.115	0.067	0.064	0.072	0.073	0.053

P.13 18 year old offer rate by ethnic group

Note: The line for a group is not plotted when that group made fewer than 10 applications in any of the years from 2012-2017.

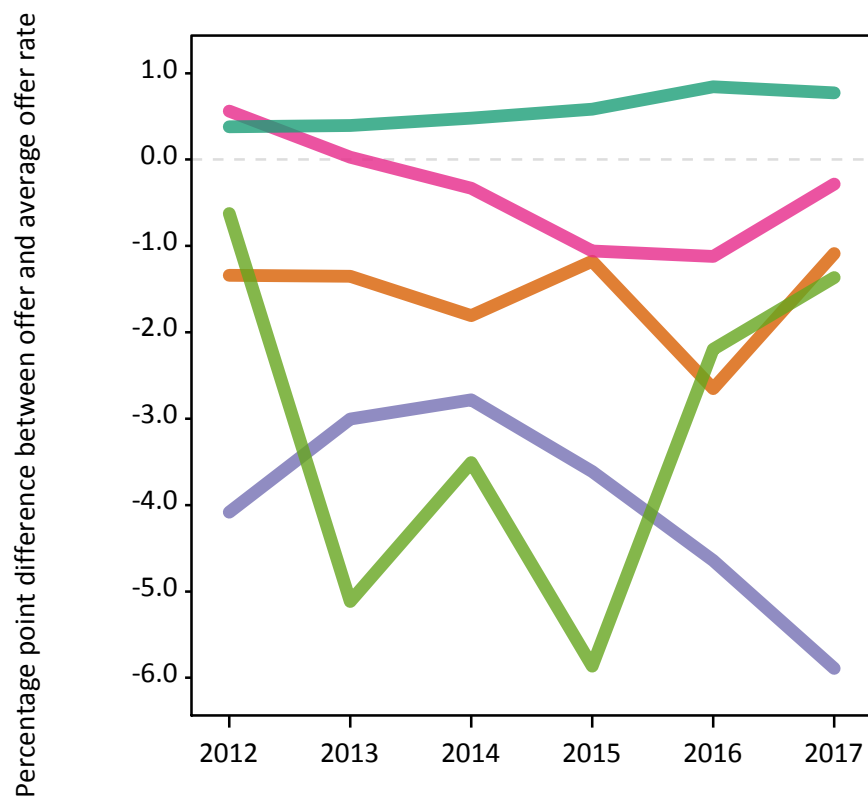
- Asian
- Black
- Mixed
- White
- Other



P.14 Percentage point difference between 18 year old offer rate and average offer rate by ethnic group

Note: The line for a group is not plotted when that group made fewer than 50 applications in any of the years from 2012-2017.

- Asian
- Black
- Mixed
- White
- Other



P.15 Applicants (all ages)

Statistic	2012	2013	2014	2015	2016	2017
June deadline applicants	16,485	17,415	19,910	20,655	24,040	25,220
Placed June deadline applicants	2,810	3,575	2,920	3,415	3,275	3,255
All placed applicants	2,960	3,710	3,090	3,595	3,415	3,415

P.16 Applications (all ages)

Statistic	2012	2013	2014	2015	2016	2017
June deadline applications	17,345	18,275	20,955	21,745	25,165	26,460
Offers	13,315	14,750	16,480	16,565	18,720	19,290
Offer rate	76.8%	80.7%	78.7%	76.2%	74.4%	72.9%

P.17 Applicants (all ages) by sex

Statistic	Sex	2012	2013	2014	2015	2016	2017
June deadline applicants	Men	10,345	11,080	12,505	12,675	15,145	15,800
	Women	6,140	6,335	7,405	7,980	8,895	9,420
Placed June deadline applicants	Men	1,730	2,215	1,760	2,010	1,935	1,920
	Women	1,080	1,360	1,160	1,410	1,335	1,335
All placed applicants	Men	1,820	2,290	1,860	2,105	2,030	2,020
	Women	1,135	1,420	1,230	1,490	1,385	1,395

P.18 Applications (all ages) by sex

Statistic	Sex	2012	2013	2014	2015	2016	2017
June deadline applications	Men	10,975	11,690	13,240	13,385	15,900	16,615
	Women	6,370	6,580	7,715	8,360	9,265	9,840
Offers	Men	8,165	9,150	10,150	9,810	11,395	11,785
	Women	5,145	5,600	6,330	6,755	7,325	7,505
Offer rate	Men	74.4%	78.3%	76.7%	73.3%	71.7%	70.9%
	Women	80.8%	85.1%	82.1%	80.8%	79.1%	76.2%

P.19 Applicants (all ages) by POLAR3 quintile

Statistic	POLAR3 quintile	2012	2013	2014	2015	2016	2017
June deadline applicants	Quintile 1	1,145	1,260	1,500	1,505	1,870	1,965
	Quintile 2	2,025	2,265	2,510	2,600	3,115	3,175
	Quintile 3	2,945	2,960	3,520	3,775	4,255	4,540
	Quintile 4	3,980	4,325	4,790	5,050	5,875	6,195
	Quintile 5	6,335	6,555	7,550	7,685	8,860	9,265
Placed June deadline applicants	Quintile 1	165	240	195	230	235	235
	Quintile 2	320	420	365	365	420	355
	Quintile 3	465	580	485	555	540	560
	Quintile 4	735	925	715	875	830	825
	Quintile 5	1,120	1,400	1,165	1,390	1,230	1,260
All placed applicants	Quintile 1	170	245	200	240	240	250
	Quintile 2	335	435	385	390	435	365
	Quintile 3	490	595	505	580	565	585
	Quintile 4	775	955	760	910	865	865
	Quintile 5	1,185	1,465	1,240	1,465	1,295	1,335

P.20 Applications (all ages) by POLAR3 quintile

Statistic	POLAR3 quintile	2012	2013	2014	2015	2016	2017
June deadline applications	Quintile 1	1,210	1,330	1,595	1,565	1,960	2,060
	Quintile 2	2,130	2,345	2,640	2,710	3,265	3,330
	Quintile 3	3,075	3,085	3,695	3,940	4,445	4,730
	Quintile 4	4,195	4,560	5,050	5,360	6,140	6,490
	Quintile 5	6,685	6,895	7,940	8,120	9,280	9,755
Offers	Quintile 1	815	945	1,120	1,080	1,330	1,355
	Quintile 2	1,500	1,785	1,980	1,855	2,250	2,225
	Quintile 3	2,260	2,415	2,795	2,875	3,175	3,320
	Quintile 4	3,260	3,715	3,990	4,180	4,585	4,680
	Quintile 5	5,440	5,845	6,570	6,545	7,325	7,645
Offer rate	Quintile 1	67.5%	71.1%	70.2%	68.8%	68.0%	65.7%
	Quintile 2	70.4%	76.0%	75.1%	68.3%	69.0%	66.8%
	Quintile 3	73.4%	78.3%	75.6%	73.0%	71.4%	70.2%
	Quintile 4	77.8%	81.5%	79.0%	78.1%	74.7%	72.1%
	Quintile 5	81.4%	84.8%	82.8%	80.6%	78.9%	78.4%

P.21 Applicants (all ages) by ethnic group

Statistic	Ethnic group	2012	2013	2014	2015	2016	2017
June deadline applicants	Asian	1,710	1,935	2,180	2,320	2,935	3,220
	Black	1,000	1,135	1,395	1,660	2,010	2,120
	Mixed	630	675	855	940	1,130	1,275
	White	12,890	13,425	15,185	15,345	17,485	18,080
	Other	165	175	205	265	310	365
Placed June deadline applicants	Asian	210	320	230	295	280	330
	Black	135	185	135	205	190	220
	Mixed	90	125	105	160	135	160
	White	2,350	2,905	2,420	2,710	2,630	2,495
	Other	15	15	15	30	25	25
All placed applicants	Asian	230	345	260	325	305	365
	Black	145	200	155	225	200	235
	Mixed	95	140	110	170	145	170
	White	2,470	2,990	2,535	2,830	2,715	2,590
	Other	15	15	20	30	25	25

P.22 Applications (all ages) by ethnic group

Statistic	Ethnic group	2012	2013	2014	2015	2016	2017
June deadline applications	Asian	1,775	1,995	2,255	2,390	3,000	3,295
	Black	1,030	1,160	1,435	1,700	2,065	2,170
	Mixed	655	695	900	975	1,160	1,340
	White	13,620	14,165	16,060	16,280	18,445	19,115
	Other	175	180	205	270	320	370
Offers	Asian	1,305	1,540	1,705	1,730	2,020	2,295
	Black	615	780	920	1,055	1,205	1,235
	Mixed	465	555	690	705	830	940
	White	10,750	11,690	12,970	12,825	14,335	14,465
	Other	115	130	135	165	205	235
Offer rate	Asian	73.4%	77.3%	75.5%	72.4%	67.4%	69.7%
	Black	59.9%	67.0%	64.1%	62.0%	58.2%	56.9%
	Mixed	71.0%	79.8%	76.5%	72.4%	71.4%	70.2%
	White	78.9%	82.5%	80.8%	78.8%	77.7%	75.7%
	Other	65.3%	71.9%	65.2%	61.3%	64.8%	63.5%

Technical Notes and Definitions

UCAS undergraduate scheme

Adjustment

Adjustment allows applicants who have met and exceeded the terms of their conditional firm offer to seek and find a place at another provider whilst keeping their place at their original firm choice provider.

Clearing

Clearing is a route for applicants that are not placed and holding no offers to find a place on courses with vacancies.

Cycle year

The UCAS application cycle which runs from September to October the following year. For example the 2017 cycle runs from September 2016 through to October 2017.

End of cycle

The point in the cycle to which the numbers in this report refer, and the point at which the cycle is closed such that no more applications or offers can be made, and no more applicants can be placed. Numbers reported at the end of cycle exclude information on a small number of applicants who cancelled during the cycle.

Extra

Applicants who are unsuccessful in obtaining an offer or decline all offers may be eligible to apply through Extra, where they can apply to one further course at a time. Extra operates from 25 February until early July. It provides applicants who are eligible the possibility of obtaining an offer before exam results are published and Clearing starts.

June 30 deadline

The deadline for main scheme applications. Applicants who apply after this date will go directly into Clearing.

Record of Prior Acceptance (RPA)

RPA is an acceptance route used when a provider informs UCAS of applicants it has accepted outside of the normal application process (e.g. individuals who have applied directly to the provider).

Reporting groups

Ethnic group

High level grouping of ethnic origin as declared by the applicant: 'White', 'Black', 'Asian', 'Mixed', 'Other', 'Unknown'. Applicants who declare themselves as 'Unknown' ethnic origin are not reported in these tables, but are included in the associated csv data file.

POLAR3 quintile

Developed by HEFCE, POLAR3 classifies small areas across the UK into five groups according to their level of young participation in Higher Education. Each of these groups represents around 20 per cent of young people and is ranked from Quintile 1 (areas with the lowest young participation rates, considered as the most disadvantaged) to Quintile 5 (highest young participation rates, considered most advantaged). POLAR3 is based on the participation rates of young people between 2005 and 2009 who entered Higher Education between 2005-06 and 2010-11, therefore is most suitable for applicants aged 19 and under. These groups are assigned using the postcode declared by the applicant at the time of their application. If a UK postcode is invalid, considered unsafe for measurement or there is no link to Census geography possible then the applicant is not assigned to a quintile. Applicants with no POLAR3 quintile are not reported.

Sex

Sex as declared by the applicant.

SIMD 2016 quintile

Scottish index of multiple deprivation (SIMD) identifies small area concentrations of multiple deprivation across all of Scotland, providing a relative measure of deprivation amongst 6505 small areas (data zones) based on 7 socio-economic domains. These small areas are classified into five groups ranked from Quintile 1 (considered the most deprived) to Quintile 5 (considered least deprived), with equal populations in each quintile. Quintiles are assigned using the postcode declared by the applicant, applicants declaring invalid postcodes are classified as 'Not assigned' and are not reported.

SIMD is only defined for applicants domiciled in Scotland, therefore any applicants domiciled outside of Scotland cannot be assigned to an SIMD quintile and so are not reported for this measure.

SIMD is only reported for providers in Scotland. Application and entry rates by SIMD are reported in the 2017 End of Cycle Report and the 2017 cycle January deadline application rate report.

Statistics reported in the tables

All placed applicants

The number of applicants placed for entry into higher education at the provider through one of their choices, including any choices made through Extra, or via Adjustment, Clearing or RPA.

All placed applicants per 10,000 population

The number of total UK domiciled 18 year old placed applicants for entry into higher education at the provider divided by the number of UK 18 year olds in the population, multiplied by 10,000. This gives the number of 18 year olds, for every 10,000 in the population, that were placed at the provider through one of their choices, including any choices made through Extra, or via Adjustment, Clearing or RPA. It is an alternative way of expressing the entry rate to a provider. By referencing the underlying population this statistic shows how the number of placed applicants is changing in relation to the available pool of potential applicants and so gives the chance that somebody from the group will be placed at a provider.

This statistic is only reported for 18 year olds.

Average offer rate

The offer rate that you might expect if the predicted grades and subject choice of applicants were the only factors that influenced whether an applicant was made an offer by the provider. The average offer rate is calculated by dividing applicants according to their specific combination of grades (for A levels the best three predicted grades are used, for BTECs, International Baccalaureate and Scottish Highers and Advanced Highers, predicted grades along with any grades already achieved upon applying are used) and subject choice. For each combination the number of main scheme offers is divided by the number of main scheme applications, to give an overall offer rate. This is then multiplied by the number of applications made by the group for which the average offer rate is being calculated (for example POLAR3 quintile 1), to give an average number of offers for that group. These average number of offers are then added together across all combinations of predicted grade and subject and divided by the number of main scheme applications from the group to give the average offer rate.

The average offer rate does not attempt to control for any other factors that may play a part in the decision to make an offer, such as the subject of the qualifications studied, their relevance to a course, or the grade in each subject; higher numbers of A levels being studied; the exact profile of grades predicted; personal statements; teacher references; interviews; or any other criteria (such as work experience or portfolios) that may be part of the admissions decision.

This statistic is only reported for 18 year olds.

Contribution of group to the average offer rate

The way in which the average offer rate is defined means that the pattern of application and offers of a group (for example POLAR3 quintile 1) will always contribute, in part, to the average offer rate for that group. When this contribution is large, the average offer rate will mainly reflect the patterns for the group, meaning that the value of the average offer rate will be similar to the offer rate, the percentage point difference statistic will be small, and any real difference between the offer rate and what might be expected given the predicted grades and subject choices of the applicants will be difficult to detect.

Values of the contribution of group to the average offer rate range between 0 and 1. The closer the value is to 1 the greater the contribution a group makes to its own average offer rate.

This statistic is only reported for 18 year olds.

Placed June deadline applicants

An applicant who has been placed for entry into higher education at the provider through a June deadline application.

Placed June deadline applicants per 10,000 population

The number of UK domiciled 18 year old placed June deadline applicants at the provider divided by the number of UK 18 year olds in the population, multiplied by 10,000. This gives the number of 18 year olds, for every 10,000 in the population, that were placed at the provider through one of their June deadline applications. It is an alternative way of expressing the entry rate to a provider, but for placed June deadline applicants only. By referencing the underlying population this statistic shows how the number of placed June deadline applicants is changing in relation to the available pool of potential 18 year old applicants and so gives the chance that somebody from the group will be placed at a provider through a June deadline application.

This statistic is only reported for 18 year olds.

June deadline applications

An application (or choice) to a course in higher education to the provider that is made by the June 30 deadline. Each applicant can make up to five choices this way. The number of June deadline applications does not include choices made through the following routes: Clearing, Extra, Adjustment and RPAs. Applications made to October deadline courses received after the October deadline are not included in these statistics.

June deadline applicants

The number of applicants that made at least one application to the provider by the June 30 deadline.

June deadline applicants per 10,000 population

The number of UK domiciled 18 year old June deadline applicants to the provider divided by the number of UK 18 year olds in the population, multiplied by 10,000. This gives the number of 18 year olds, for every 10,000 in the population, who applied by the June 30 deadline. It is equivalent to the application rate. By referencing the underlying population this statistic shows how the number of June deadline applicants is changing in relation to the available pool of potential 18 year old applicants and so gives the chance that somebody from the group will apply to a provider by the June 30 deadline.

This statistic is only reported for 18 year olds.

Offers

An offer is defined as a provider's decision in response to an application to offer a place to an applicant, often subject to the applicant satisfying academic and/or other criteria, via a June deadline application (i.e. does not cover choices made through the following routes: Clearing, Extra, Adjustment and RPAs).

Offer rate

The number of offers made divided by the number of June deadline applications. This gives the proportion of all June deadline applications to the provider that received an offer.

Percentage point difference between offer rate and average offer rate

The offer rate minus the average offer rate.

The percentage point difference can be compared to the expected range of statistical variation resulting from the calculation of the average offer rate using the Average Offer Rate Lookup Table. Where the value of the percentage point difference lies outside of this range, the percentage point difference may be considered to represent a real difference between the offer rate and the average offer rate.

Other definitions

Age

This analysis uses country-specific age definitions that align with the cut off points for school and college cohorts within the different administrations of the UK. For England and Wales, ages are defined on the 31 August, for Northern Ireland on the 1 July and for Scotland on the 28 February the following year. Defining ages in this way matches the assignment of children to school cohorts. For applicants outside of the UK a cohort cut off of 31 August has been used. Numbers for applicants aged 17 and under are included in the tables that report numbers for all age groups. Providers in Scotland typically receive a higher proportion of applicants aged 17 and under compared to providers elsewhere in the UK.

Provider

A higher education provider - a university or college.

UK domiciled

Declared area of permanent residence within England, Northern Ireland, Scotland and Wales. Applicants from the Channel Islands and Isle of Man are not included.