

G70 University of Greenwich

Cycle years: 2012 - 2017

Cycle Reference Point: End of Cycle

Applicant coverage: UK domiciled

Reporting groups: Sex, POLAR3, ethnic group

Applicant statistics: June deadline applicants, placed June deadline applicants, all placed applicants, June deadline applicants per 10,000 population, placed June deadline applicants per 10,000 population, all placed applicants per 10,000 population

Application statistics: June deadline applications, offers, offer rate, average offer rate, percentage point difference between offer rate and average offer rate, contribution of group to the average offer rate

Non-disclosure controls: To avoid the disclosure of information about any individual the following measures are taken

- Applicants, placed applicants, applications and offers are rounded to the nearest 5.
- Applicants/placed applicants per 10,000 population figures are reported as 0 if the applicant/placed applicant figures are rounded to 0.
- All statistics related to the offer rate are not reported when the number of applications for a group is less than 10. The percentage point difference between the offer rate and the average offer rate is not reported when the number of applications for a group is less than 50.
- Offer rates are reported as 0% if there are fewer than 5 offers, and 100% if the number of offers is within 5 of the number of applications. When the offer rate is reported as 0% or 100%, it is reported in italics.

Contents:

18 year old applicants:	P.1
18 year old applications:	P.2
18 year old applicants by sex:	P.3
18 year old applications by sex:	P.4
18 year old applicants by POLAR3 quintile:	P.7
18 year old applications by POLAR3 quintile:	P.8
18 year old applicants by ethnic group:	P.11
18 year old applications by ethnic group:	P.12
Applicants (all ages):	P.15
Applications (all ages):	P.16
Applicants (all ages) by sex:	P.17
Applications (all ages) by sex:	P.18
Applicants (all ages) by POLAR3 quintile:	P.19
Applications (all ages) by POLAR3 quintile:	P.20
Applicants (all ages) by ethnic group:	P.21
Applications (all ages) by ethnic group:	P.22

P.1 18 year old applicants

Statistic	2012	2013	2014	2015	2016	2017
June deadline applicants	9,295	9,470	10,485	10,175	8,505	9,030
Placed June deadline applicants	1,090	1,225	1,330	1,230	1,065	1,130
All placed applicants	1,360	1,560	1,585	1,440	1,345	1,430
June deadline applicants per 10,000 population	120.1	124.4	139.2	132.8	113.5	121.9
Placed June deadline applicants per 10,000	14.1	16.1	17.7	16.0	14.2	15.3
All placed applicants per 10,000 population	17.6	20.5	21.0	18.8	17.9	19.3

P.2 18 year old applications

Statistic	2012	2013	2014	2015	2016	2017
June deadline applications	9,820	9,910	10,960	10,505	8,780	9,410
Offers	7,475	7,230	7,895	7,800	6,545	7,260
Offer rate	76.1%	73.0%	72.0%	74.3%	74.5%	77.2%

P.3 18 year old applicants by sex

Statistic	Sex	2012	2013	2014	2015	2016	2017
June deadline applicants	Men	3,950	3,850	3,985	3,795	3,240	3,530
	Women	5,345	5,620	6,500	6,380	5,270	5,500
Placed June deadline applicants	Men	485	505	570	530	455	490
	Women	610	725	760	700	610	640
All placed applicants	Men	615	650	680	610	570	625
	Women	745	910	905	825	775	810
June deadline applicants per 10,000 population	Men	99.6	98.6	103.0	96.7	84.3	93.0
	Women	141.8	151.6	177.5	170.7	144.2	152.3
Placed June deadline applicants per 10,000 population	Men	12.2	12.9	14.8	13.5	11.9	13.0
	Women	16.2	19.5	20.7	18.7	16.6	17.7
All placed applicants per 10,000 population	Men	15.5	16.7	17.5	15.6	14.8	16.4
	Women	19.7	24.5	24.7	22.1	21.2	22.4

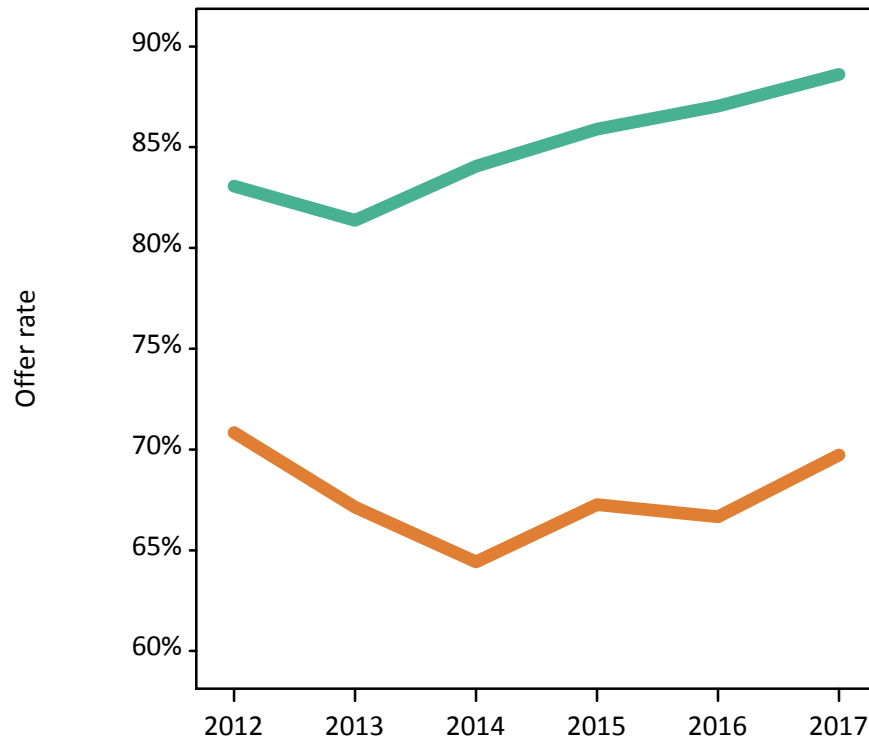
P.4 18 year old applications by sex

Statistic	Sex	2012	2013	2014	2015	2016	2017
June deadline applications	Men	4,235	4,070	4,250	3,950	3,390	3,705
	Women	5,585	5,840	6,710	6,555	5,395	5,700
Offers	Men	3,515	3,310	3,575	3,395	2,950	3,285
	Women	3,955	3,920	4,325	4,410	3,595	3,975
Offer rate	Men	83.1%	81.4%	84.1%	85.9%	87.0%	88.6%
	Women	70.8%	67.1%	64.4%	67.3%	66.7%	69.7%
Average offer rate	Men	83.0%	81.4%	83.9%	85.4%	86.5%	88.0%
	Women	70.9%	67.1%	64.5%	67.6%	67.0%	70.2%
Percentage point difference between offer rate and average offer rate	Men	0.1	-0.1	0.1	0.5	0.5	0.7
	Women	-0.1	0.1	-0.1	-0.3	-0.3	-0.4
Contribution of group to the average offer rate	Men	0.635	0.631	0.612	0.596	0.618	0.627
	Women	0.724	0.743	0.754	0.756	0.760	0.758

P.5 18 year old offer rate by sex

Note: The line for a group is not plotted when that group made fewer than 10 applications in any of the years from 2012-2017.

Men
Women



P.6 Percentage point difference between 18 year old offer rate and average offer rate by sex

Note: The line for a group is not plotted when that group made fewer than 50 applications in any of the years from 2012-2017.

Men
Women



P.7 18 year old applicants by POLAR3 quintile

Statistic	POLAR3 quintile	2012	2013	2014	2015	2016	2017
June deadline applicants	Quintile 1	745	780	980	895	715	725
	Quintile 2	1,410	1,395	1,595	1,630	1,375	1,410
	Quintile 3	2,560	2,570	2,765	2,685	2,335	2,550
	Quintile 4	2,500	2,605	2,750	2,680	2,235	2,370
	Quintile 5	2,060	2,100	2,370	2,260	1,830	1,955
Placed June deadline applicants	Quintile 1	115	110	150	140	95	105
	Quintile 2	210	210	225	205	190	220
	Quintile 3	285	340	370	350	290	315
	Quintile 4	275	345	330	295	285	285
	Quintile 5	205	225	250	230	205	205
All placed applicants	Quintile 1	130	125	165	160	120	130
	Quintile 2	260	250	260	240	240	270
	Quintile 3	365	430	445	405	365	410
	Quintile 4	340	445	400	365	345	360
	Quintile 5	260	305	310	270	270	265
June deadline applicants per 10,000 population	Quintile 1	52.4	56.0	70.5	63.8	52.9	54.4
	Quintile 2	94.0	94.7	109.1	109.7	95.2	99.1
	Quintile 3	165.9	168.6	183.8	174.9	155.2	171.1
	Quintile 4	157.6	166.7	178.3	171.3	144.8	155.2
	Quintile 5	122.6	127.0	145.4	135.0	110.7	118.9
Placed June deadline applicants per 10,000 population	Quintile 1	8.1	8.0	10.9	10.1	7.2	7.8
	Quintile 2	14.1	14.2	15.4	13.9	13.0	15.5
	Quintile 3	18.4	22.2	24.6	22.7	19.2	21.0
	Quintile 4	17.3	22.1	21.5	19.0	18.5	18.6
	Quintile 5	12.2	13.5	15.4	13.7	12.4	12.6
All placed applicants per 10,000 population	Quintile 1	9.1	9.1	11.7	11.4	8.8	9.6
	Quintile 2	17.5	17.0	17.8	16.2	16.5	19.0
	Quintile 3	23.7	28.3	29.7	26.2	24.3	27.4
	Quintile 4	21.5	28.3	26.0	23.3	22.5	23.4
	Quintile 5	15.5	18.5	18.9	16.0	16.4	16.0

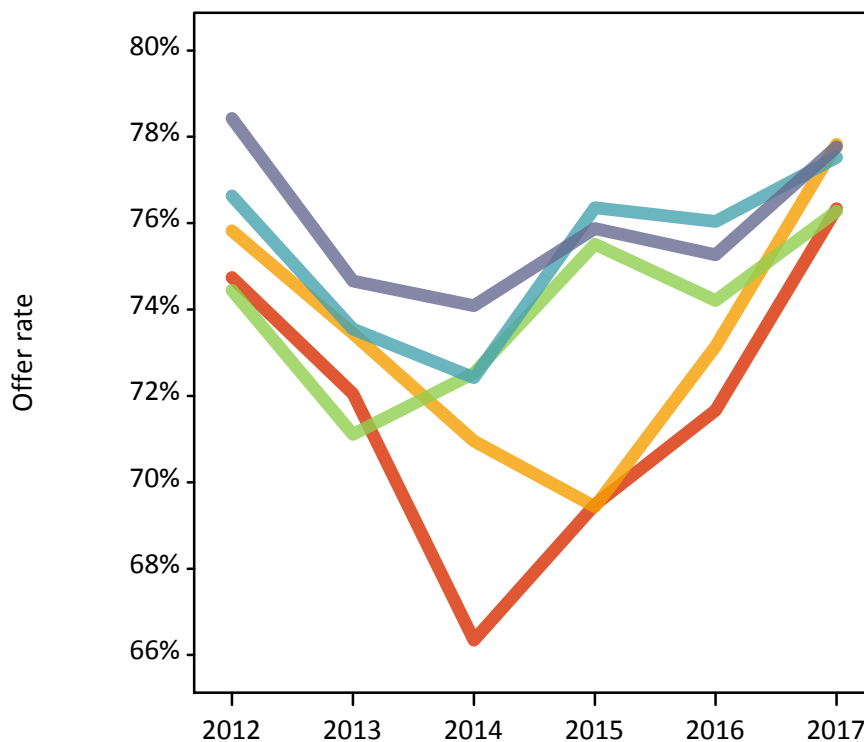
P.8 18 year old applications by POLAR3 quintile

Statistic	POLAR3 quintile	2012	2013	2014	2015	2016	2017
June deadline applications	Quintile 1	780	825	1,030	935	735	770
	Quintile 2	1,520	1,480	1,695	1,710	1,430	1,495
	Quintile 3	2,710	2,680	2,895	2,765	2,420	2,645
	Quintile 4	2,625	2,725	2,870	2,750	2,285	2,455
	Quintile 5	2,170	2,185	2,445	2,320	1,890	2,015
Offers	Quintile 1	585	595	680	650	525	585
	Quintile 2	1,155	1,085	1,200	1,185	1,045	1,165
	Quintile 3	2,020	1,905	2,100	2,090	1,795	2,015
	Quintile 4	2,010	2,005	2,080	2,100	1,740	1,905
	Quintile 5	1,700	1,630	1,815	1,760	1,425	1,565
Offer rate	Quintile 1	74.7%	72.1%	66.3%	69.5%	71.7%	76.3%
	Quintile 2	75.8%	73.4%	71.0%	69.4%	73.1%	77.8%
	Quintile 3	74.4%	71.1%	72.5%	75.5%	74.2%	76.3%
	Quintile 4	76.6%	73.6%	72.4%	76.4%	76.0%	77.5%
	Quintile 5	78.4%	74.7%	74.1%	75.9%	75.3%	77.8%
Average offer rate	Quintile 1	73.7%	72.3%	66.8%	69.9%	71.0%	75.1%
	Quintile 2	75.2%	71.6%	70.5%	70.9%	73.2%	77.4%
	Quintile 3	75.2%	71.8%	72.4%	74.9%	74.9%	77.3%
	Quintile 4	76.2%	73.3%	73.3%	75.8%	75.3%	77.7%
	Quintile 5	78.7%	75.3%	73.3%	76.0%	75.5%	76.9%
Percentage point difference between offer rate and average offer rate	Quintile 1	1.1	-0.2	-0.4	-0.4	0.7	1.2
	Quintile 2	0.6	1.8	0.4	-1.5	-0.0	0.4
	Quintile 3	-0.8	-0.7	0.1	0.6	-0.7	-1.1
	Quintile 4	0.4	0.2	-0.9	0.6	0.8	-0.2
	Quintile 5	-0.3	-0.6	0.8	-0.2	-0.2	0.8
Contribution of group to the average offer rate	Quintile 1	0.153	0.163	0.167	0.164	0.163	0.165
	Quintile 2	0.232	0.219	0.222	0.233	0.242	0.238
	Quintile 3	0.342	0.334	0.323	0.329	0.348	0.341
	Quintile 4	0.335	0.331	0.323	0.317	0.333	0.326
	Quintile 5	0.304	0.300	0.307	0.300	0.303	0.298

P.9 18 year old offer rate by POLAR3 quintile

Note: The line for a group is not plotted when that group made fewer than 10 applications in any of the years from 2012-2017.

- Quintile 1
- Quintile 2
- Quintile 3
- Quintile 4
- Quintile 5



P.10 Percentage point difference between 18 year old offer rate and average offer rate by POLAR3 quintile

Note: The line for a group is not plotted when that group made fewer than 50 applications in any of the years from 2012-2017.

- Quintile 1
- Quintile 2
- Quintile 3
- Quintile 4
- Quintile 5



P.11 18 year old applicants by ethnic group

Statistic	Ethnic group	2012	2013	2014	2015	2016	2017
June deadline applicants	Asian	2,275	2,565	2,535	2,580	2,160	2,420
	Black	1,225	1,230	1,240	1,180	1,000	1,060
	Mixed	450	460	500	515	475	475
	White	4,910	4,790	5,730	5,405	4,455	4,540
	Other	380	365	425	420	355	445
Placed June deadline applicants	Asian	220	285	275	250	255	255
	Black	85	105	105	110	105	95
	Mixed	50	60	70	70	65	70
	White	695	735	825	725	585	660
	Other	40	40	45	60	45	45
All placed applicants	Asian	300	400	360	310	360	370
	Black	120	160	140	140	140	140
	Mixed	60	75	85	80	75	90
	White	820	865	930	830	705	770
	Other	55	60	55	70	55	60
June deadline applicants per 10,000 population	Asian	351.1	388.8	373.8	364.4	300.3	329.1
	Black	435.7	414.6	409.1	370.7	319.4	337.5
	Mixed	173.1	169.8	174.5	167.3	151.6	148.6
	White	76.0	76.1	92.9	86.8	73.6	76.5
	Other	428.3	400.3	457.7	437.8	355.7	433.0
Placed June deadline applicants per 10,000 population	Asian	34.1	43.4	40.7	35.3	35.4	34.4
	Black	29.8	35.4	35.0	35.2	33.5	30.5
	Mixed	19.2	22.2	24.7	22.4	20.3	22.1
	White	10.8	11.7	13.4	11.7	9.7	11.1
	Other	42.9	43.0	46.2	61.2	44.2	43.7
All placed applicants per 10,000 population	Asian	46.3	60.6	52.8	43.5	49.7	50.4
	Black	42.6	53.6	45.5	43.4	44.7	43.9
	Mixed	23.0	27.0	29.5	26.6	24.2	27.4
	White	12.7	13.7	15.1	13.3	11.6	13.0
	Other	59.9	64.0	59.1	72.6	54.3	58.2

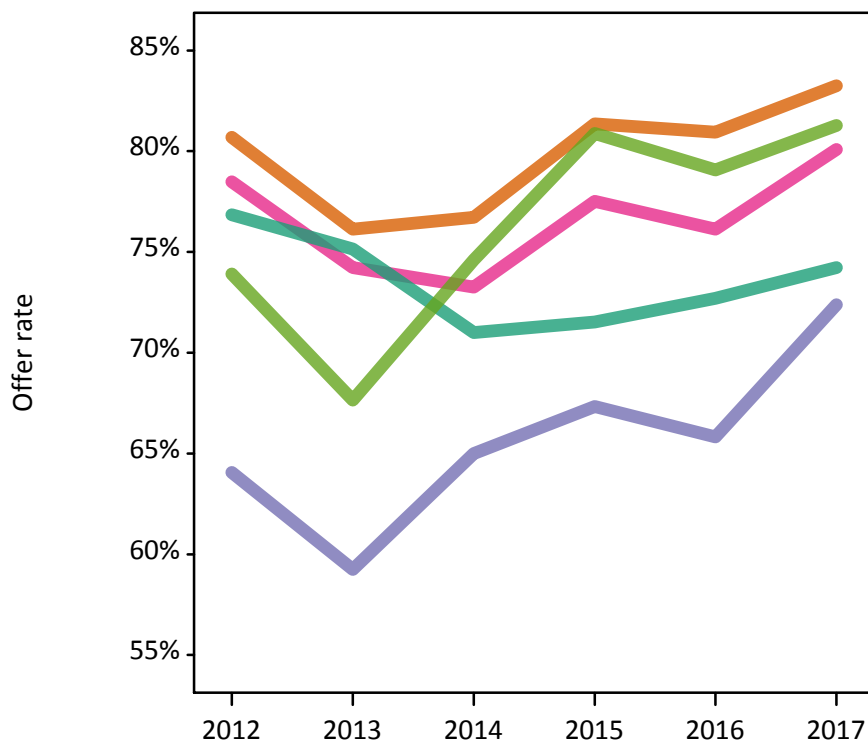
P.12 18 year old applications by ethnic group

Statistic	Ethnic group	2012	2013	2014	2015	2016	2017
June deadline applications	Asian	2,390	2,660	2,625	2,645	2,225	2,500
	Black	1,255	1,255	1,265	1,195	1,020	1,085
	Mixed	475	480	530	530	485	495
	White	5,260	5,075	6,045	5,630	4,620	4,780
	Other	385	370	440	430	370	455
Offers	Asian	1,925	2,025	2,015	2,150	1,800	2,085
	Black	805	745	820	805	670	785
	Mixed	370	355	390	410	370	400
	White	4,045	3,815	4,290	4,030	3,360	3,550
	Other	285	250	330	345	290	370
Offer rate	Asian	80.7%	76.1%	76.7%	81.4%	80.9%	83.3%
	Black	64.1%	59.3%	65.0%	67.3%	65.8%	72.4%
	Mixed	78.5%	74.2%	73.3%	77.5%	76.1%	80.1%
	White	76.9%	75.1%	71.0%	71.5%	72.7%	74.2%
	Other	73.9%	67.7%	74.6%	80.9%	79.1%	81.3%
Average offer rate	Asian	80.3%	76.2%	77.3%	81.2%	81.5%	83.9%
	Black	68.8%	62.7%	67.6%	69.1%	68.7%	74.5%
	Mixed	75.2%	74.7%	72.6%	77.0%	75.9%	78.1%
	White	76.0%	73.8%	70.2%	71.3%	71.7%	73.4%
	Other	75.2%	72.0%	76.4%	80.3%	80.7%	82.6%
Percentage point difference between offer rate and average offer rate	Asian	0.4	-0.0	-0.6	0.1	-0.5	-0.7
	Black	-4.8	-3.5	-2.5	-1.8	-2.9	-2.1
	Mixed	3.3	-0.4	0.7	0.5	0.3	2.0
	White	0.8	1.3	0.8	0.2	1.0	0.8
	Other	-1.3	-4.3	-1.8	0.6	-1.7	-1.3
Contribution of group to the average offer rate	Asian	0.372	0.375	0.365	0.370	0.382	0.385
	Black	0.223	0.233	0.210	0.210	0.224	0.222
	Mixed	0.127	0.125	0.134	0.122	0.131	0.138
	White	0.628	0.598	0.643	0.631	0.632	0.616
	Other	0.135	0.123	0.124	0.127	0.124	0.129

P.13 18 year old offer rate by ethnic group

Note: The line for a group is not plotted when that group made fewer than 10 applications in any of the years from 2012-2017.

- Asian
- Black
- Mixed
- White
- Other



P.14 Percentage point difference between 18 year old offer rate and average offer rate by ethnic group

Note: The line for a group is not plotted when that group made fewer than 50 applications in any of the years from 2012-2017.

- Asian
- Black
- Mixed
- White
- Other



P.15 Applicants (all ages)

Statistic	2012	2013	2014	2015	2016	2017
June deadline applicants	26,420	26,475	28,820	27,030	24,145	22,435
Placed June deadline applicants	2,780	3,380	3,525	3,320	3,160	2,960
All placed applicants	3,695	4,455	4,400	4,215	4,095	3,880

P.16 Applications (all ages)

Statistic	2012	2013	2014	2015	2016	2017
June deadline applications	28,490	28,340	30,680	28,610	25,495	23,920
Offers	14,155	15,035	15,995	15,765	13,730	13,820
Offer rate	49.7%	53.1%	52.1%	55.1%	53.9%	57.8%

P.17 Applicants (all ages) by sex

Statistic	Sex	2012	2013	2014	2015	2016	2017
June deadline applicants	Men	10,300	10,085	10,495	9,640	8,455	8,200
	Women	16,125	16,390	18,330	17,390	15,690	14,235
Placed June deadline applicants	Men	1,235	1,395	1,485	1,365	1,260	1,175
	Women	1,540	1,980	2,040	1,960	1,900	1,785
All placed applicants	Men	1,675	1,880	1,860	1,775	1,640	1,600
	Women	2,015	2,575	2,535	2,440	2,460	2,280

P.18 Applications (all ages) by sex

Statistic	Sex	2012	2013	2014	2015	2016	2017
June deadline applications	Men	11,220	10,915	11,335	10,250	8,995	8,775
	Women	17,270	17,425	19,345	18,355	16,495	15,140
Offers	Men	6,840	7,065	7,520	7,065	6,195	6,155
	Women	7,315	7,970	8,470	8,700	7,535	7,670
Offer rate	Men	61.0%	64.7%	66.4%	68.9%	68.9%	70.1%
	Women	42.4%	45.7%	43.8%	47.4%	45.7%	50.6%

P.19 Applicants (all ages) by POLAR3 quintile

Statistic	POLAR3 quintile	2012	2013	2014	2015	2016	2017
June deadline applicants	Quintile 1	2,180	2,215	2,630	2,365	2,125	1,935
	Quintile 2	3,830	3,840	4,385	4,135	3,780	3,550
	Quintile 3	8,095	7,960	8,420	7,965	7,270	6,755
	Quintile 4	6,935	6,975	7,390	6,975	6,155	5,645
	Quintile 5	5,300	5,430	5,930	5,525	4,750	4,450
Placed June deadline applicants	Quintile 1	290	315	345	325	310	280
	Quintile 2	490	590	595	575	545	560
	Quintile 3	795	960	1,000	995	925	860
	Quintile 4	690	885	880	800	785	695
	Quintile 5	505	630	695	620	585	555
All placed applicants	Quintile 1	355	365	415	385	380	355
	Quintile 2	645	740	725	710	695	715
	Quintile 3	1,090	1,305	1,290	1,260	1,220	1,150
	Quintile 4	915	1,175	1,095	1,055	1,015	920
	Quintile 5	680	870	860	805	770	730

P.20 Applications (all ages) by POLAR3 quintile

Statistic	POLAR3 quintile	2012	2013	2014	2015	2016	2017
June deadline applications	Quintile 1	2,365	2,385	2,805	2,525	2,270	2,090
	Quintile 2	4,235	4,200	4,765	4,460	4,060	3,900
	Quintile 3	8,795	8,545	9,005	8,445	7,690	7,215
	Quintile 4	7,380	7,425	7,805	7,335	6,440	5,955
	Quintile 5	5,625	5,720	6,235	5,775	4,965	4,655
Offers	Quintile 1	1,160	1,210	1,370	1,310	1,140	1,140
	Quintile 2	2,075	2,210	2,400	2,315	2,070	2,205
	Quintile 3	4,005	4,170	4,420	4,415	3,905	3,960
	Quintile 4	3,745	4,080	4,165	4,195	3,605	3,535
	Quintile 5	3,140	3,345	3,600	3,505	2,980	2,920
Offer rate	Quintile 1	49.0%	50.7%	48.9%	52.0%	50.2%	54.5%
	Quintile 2	49.0%	52.6%	50.4%	51.9%	51.0%	56.5%
	Quintile 3	45.6%	48.8%	49.1%	52.3%	50.8%	54.9%
	Quintile 4	50.7%	54.9%	53.4%	57.2%	55.9%	59.4%
	Quintile 5	55.8%	58.4%	57.8%	60.7%	60.0%	62.7%

P.21 Applicants (all ages) by ethnic group

Statistic	Ethnic group	2012	2013	2014	2015	2016	2017
June deadline applicants	Asian	5,150	5,485	5,660	5,575	4,805	4,870
	Black	7,975	7,355	7,590	7,070	6,910	5,995
	Mixed	1,345	1,370	1,500	1,425	1,345	1,220
	White	10,690	11,030	12,695	11,670	9,835	9,030
	Other	1,010	975	1,110	1,035	965	1,030
Placed June deadline applicants	Asian	465	610	645	560	580	550
	Black	470	650	570	570	635	565
	Mixed	140	175	190	185	185	175
	White	1,580	1,815	1,985	1,835	1,585	1,530
	Other	95	100	105	140	135	105
All placed applicants	Asian	680	900	850	780	835	820
	Black	760	955	815	825	885	790
	Mixed	180	230	250	240	230	235
	White	1,895	2,165	2,290	2,130	1,910	1,830
	Other	135	160	145	190	180	150

P.22 Applications (all ages) by ethnic group

Statistic	Ethnic group	2012	2013	2014	2015	2016	2017
June deadline applications	Asian	5,500	5,795	5,915	5,775	4,980	5,120
	Black	8,500	7,820	8,010	7,440	7,310	6,395
	Mixed	1,450	1,470	1,580	1,515	1,415	1,290
	White	11,710	11,975	13,735	12,520	10,490	9,720
	Other	1,055	1,005	1,160	1,080	1,005	1,065
Offers	Asian	3,495	3,715	3,820	4,000	3,420	3,665
	Black	2,230	2,420	2,435	2,405	2,225	2,175
	Mixed	780	795	880	875	820	790
	White	6,940	7,395	8,010	7,615	6,470	6,300
	Other	580	585	715	720	650	710
Offer rate	Asian	63.5%	64.1%	64.6%	69.3%	68.6%	71.5%
	Black	26.3%	30.9%	30.4%	32.3%	30.5%	34.0%
	Mixed	53.7%	54.0%	55.5%	57.7%	57.9%	61.4%
	White	59.3%	61.7%	58.3%	60.8%	61.7%	64.8%
	Other	55.1%	58.0%	61.5%	66.6%	65.0%	66.7%

Technical Notes and Definitions

UCAS undergraduate scheme

Adjustment

Adjustment allows applicants who have met and exceeded the terms of their conditional firm offer to seek and find a place at another provider whilst keeping their place at their original firm choice provider.

Clearing

Clearing is a route for applicants that are not placed and holding no offers to find a place on courses with vacancies.

Cycle year

The UCAS application cycle which runs from September to October the following year. For example the 2017 cycle runs from September 2016 through to October 2017.

End of cycle

The point in the cycle to which the numbers in this report refer, and the point at which the cycle is closed such that no more applications or offers can be made, and no more applicants can be placed. Numbers reported at the end of cycle exclude information on a small number of applicants who cancelled during the cycle.

Extra

Applicants who are unsuccessful in obtaining an offer or decline all offers may be eligible to apply through Extra, where they can apply to one further course at a time. Extra operates from 25 February until early July. It provides applicants who are eligible the possibility of obtaining an offer before exam results are published and Clearing starts.

June 30 deadline

The deadline for main scheme applications. Applicants who apply after this date will go directly into Clearing.

Record of Prior Acceptance (RPA)

RPA is an acceptance route used when a provider informs UCAS of applicants it has accepted outside of the normal application process (e.g. individuals who have applied directly to the provider).

Reporting groups

Ethnic group

High level grouping of ethnic origin as declared by the applicant: 'White', 'Black', 'Asian', 'Mixed', 'Other', 'Unknown'. Applicants who declare themselves as 'Unknown' ethnic origin are not reported in these tables, but are included in the associated csv data file.

POLAR3 quintile

Developed by HEFCE, POLAR3 classifies small areas across the UK into five groups according to their level of young participation in Higher Education. Each of these groups represents around 20 per cent of young people and is ranked from Quintile 1 (areas with the lowest young participation rates, considered as the most disadvantaged) to Quintile 5 (highest young participation rates, considered most advantaged). POLAR3 is based on the participation rates of young people between 2005 and 2009 who entered Higher Education between 2005-06 and 2010-11, therefore is most suitable for applicants aged 19 and under. These groups are assigned using the postcode declared by the applicant at the time of their application. If a UK postcode is invalid, considered unsafe for measurement or there is no link to Census geography possible then the applicant is not assigned to a quintile. Applicants with no POLAR3 quintile are not reported.

Sex

Sex as declared by the applicant.

SIMD 2016 quintile

Scottish index of multiple deprivation (SIMD) identifies small area concentrations of multiple deprivation across all of Scotland, providing a relative measure of deprivation amongst 6505 small areas (data zones) based on 7 socio-economic domains. These small areas are classified into five groups ranked from Quintile 1 (considered the most deprived) to Quintile 5 (considered least deprived), with equal populations in each quintile. Quintiles are assigned using the postcode declared by the applicant, applicants declaring invalid postcodes are classified as 'Not assigned' and are not reported.

SIMD is only defined for applicants domiciled in Scotland, therefore any applicants domiciled outside of Scotland cannot be assigned to an SIMD quintile and so are not reported for this measure.

SIMD is only reported for providers in Scotland. Application and entry rates by SIMD are reported in the 2017 End of Cycle Report and the 2017 cycle January deadline application rate report.

Statistics reported in the tables

All placed applicants

The number of applicants placed for entry into higher education at the provider through one of their choices, including any choices made through Extra, or via Adjustment, Clearing or RPA.

All placed applicants per 10,000 population

The number of total UK domiciled 18 year old placed applicants for entry into higher education at the provider divided by the number of UK 18 year olds in the population, multiplied by 10,000. This gives the number of 18 year olds, for every 10,000 in the population, that were placed at the provider through one of their choices, including any choices made through Extra, or via Adjustment, Clearing or RPA. It is an alternative way of expressing the entry rate to a provider. By referencing the underlying population this statistic shows how the number of placed applicants is changing in relation to the available pool of potential applicants and so gives the chance that somebody from the group will be placed at a provider.

This statistic is only reported for 18 year olds.

Average offer rate

The offer rate that you might expect if the predicted grades and subject choice of applicants were the only factors that influenced whether an applicant was made an offer by the provider. The average offer rate is calculated by dividing applicants according to their specific combination of grades (for A levels the best three predicted grades are used, for BTECs, International Baccalaureate and Scottish Highers and Advanced Highers, predicted grades along with any grades already achieved upon applying are used) and subject choice. For each combination the number of main scheme offers is divided by the number of main scheme applications, to give an overall offer rate. This is then multiplied by the number of applications made by the group for which the average offer rate is being calculated (for example POLAR3 quintile 1), to give an average number of offers for that group. These average number of offers are then added together across all combinations of predicted grade and subject and divided by the number of main scheme applications from the group to give the average offer rate.

The average offer rate does not attempt to control for any other factors that may play a part in the decision to make an offer, such as the subject of the qualifications studied, their relevance to a course, or the grade in each subject; higher numbers of A levels being studied; the exact profile of grades predicted; personal statements; teacher references; interviews; or any other criteria (such as work experience or portfolios) that may be part of the admissions decision.

This statistic is only reported for 18 year olds.

Contribution of group to the average offer rate

The way in which the average offer rate is defined means that the pattern of application and offers of a group (for example POLAR3 quintile 1) will always contribute, in part, to the average offer rate for that group. When this contribution is large, the average offer rate will mainly reflect the patterns for the group, meaning that the value of the average offer rate will be similar to the offer rate, the percentage point difference statistic will be small, and any real difference between the offer rate and what might be expected given the predicted grades and subject choices of the applicants will be difficult to detect.

Values of the contribution of group to the average offer rate range between 0 and 1. The closer the value is to 1 the greater the contribution a group makes to its own average offer rate.

This statistic is only reported for 18 year olds.

Placed June deadline applicants

An applicant who has been placed for entry into higher education at the provider through a June deadline application.

Placed June deadline applicants per 10,000 population

The number of UK domiciled 18 year old placed June deadline applicants at the provider divided by the number of UK 18 year olds in the population, multiplied by 10,000. This gives the number of 18 year olds, for every 10,000 in the population, that were placed at the provider through one of their June deadline applications. It is an alternative way of expressing the entry rate to a provider, but for placed June deadline applicants only. By referencing the underlying population this statistic shows how the number of placed June deadline applicants is changing in relation to the available pool of potential 18 year old applicants and so gives the chance that somebody from the group will be placed at a provider through a June deadline application.

This statistic is only reported for 18 year olds.

June deadline applications

An application (or choice) to a course in higher education to the provider that is made by the June 30 deadline. Each applicant can make up to five choices this way. The number of June deadline applications does not include choices made through the following routes: Clearing, Extra, Adjustment and RPAs. Applications made to October deadline courses received after the October deadline are not included in these statistics.

June deadline applicants

The number of applicants that made at least one application to the provider by the June 30 deadline.

June deadline applicants per 10,000 population

The number of UK domiciled 18 year old June deadline applicants to the provider divided by the number of UK 18 year olds in the population, multiplied by 10,000. This gives the number of 18 year olds, for every 10,000 in the population, who applied by the June 30 deadline. It is equivalent to the application rate. By referencing the underlying population this statistic shows how the number of June deadline applicants is changing in relation to the available pool of potential 18 year old applicants and so gives the chance that somebody from the group will apply to a provider by the June 30 deadline.

This statistic is only reported for 18 year olds.

Offers

An offer is defined as a provider's decision in response to an application to offer a place to an applicant, often subject to the applicant satisfying academic and/or other criteria, via a June deadline application (i.e. does not cover choices made through the following routes: Clearing, Extra, Adjustment and RPAs).

Offer rate

The number of offers made divided by the number of June deadline applications. This gives the proportion of all June deadline applications to the provider that received an offer.

Percentage point difference between offer rate and average offer rate

The offer rate minus the average offer rate.

The percentage point difference can be compared to the expected range of statistical variation resulting from the calculation of the average offer rate using the Average Offer Rate Lookup Table. Where the value of the percentage point difference lies outside of this range, the percentage point difference may be considered to represent a real difference between the offer rate and the average offer rate.

Other definitions

Age

This analysis uses country-specific age definitions that align with the cut off points for school and college cohorts within the different administrations of the UK. For England and Wales, ages are defined on the 31 August, for Northern Ireland on the 1 July and for Scotland on the 28 February the following year. Defining ages in this way matches the assignment of children to school cohorts. For applicants outside of the UK a cohort cut off of 31 August has been used. Numbers for applicants aged 17 and under are included in the tables that report numbers for all age groups. Providers in Scotland typically receive a higher proportion of applicants aged 17 and under compared to providers elsewhere in the UK.

Provider

A higher education provider - a university or college.

UK domiciled

Declared area of permanent residence within England, Northern Ireland, Scotland and Wales. Applicants from the Channel Islands and Isle of Man are not included.