

G56 Goldsmiths University of London

Cycle years: 2012 - 2017

Cycle Reference Point: End of Cycle

Applicant coverage: UK domiciled

Reporting groups: Sex, POLAR3, ethnic group

Applicant statistics: June deadline applicants, placed June deadline applicants, all placed applicants, June deadline applicants per 10,000 population, placed June deadline applicants per 10,000 population, all placed applicants per 10,000 population

Application statistics: June deadline applications, offers, offer rate, average offer rate, percentage point difference between offer rate and average offer rate, contribution of group to the average offer rate

Non-disclosure controls: To avoid the disclosure of information about any individual the following measures are taken

- Applicants, placed applicants, applications and offers are rounded to the nearest 5.
- Applicants/placed applicants per 10,000 population figures are reported as 0 if the applicant/placed applicant figures are rounded to 0.
- All statistics related to the offer rate are not reported when the number of applications for a group is less than 10. The percentage point difference between the offer rate and the average offer rate is not reported when the number of applications for a group is less than 50.
- Offer rates are reported as 0% if there are fewer than 5 offers, and 100% if the number of offers is within 5 of the number of applications. When the offer rate is reported as 0% or 100%, it is reported in italics.

Contents:

- 18 year old applicants: P.1
- 18 year old applications: P.2
- 18 year old applicants by sex: P.3
- 18 year old applications by sex: P.4
- 18 year old applicants by POLAR3 quintile: P.7
- 18 year old applications by POLAR3 quintile: P.8
- 18 year old applicants by ethnic group: P.11
- 18 year old applications by ethnic group: P.12
- Applicants (all ages): P.15
- Applications (all ages): P.16
- Applicants (all ages) by sex: P.17
- Applications (all ages) by sex: P.18
- Applicants (all ages) by POLAR3 quintile: P.19
- Applications (all ages) by POLAR3 quintile: P.20
- Applicants (all ages) by ethnic group: P.21
- Applications (all ages) by ethnic group: P.22

P.1 18 year old applicants

Statistic	2012	2013	2014	2015	2016	2017
June deadline applicants	2,510	2,870	3,470	3,310	3,550	3,870
Placed June deadline applicants	465	410	560	525	580	715
All placed applicants	500	475	645	725	855	970
June deadline applicants per 10,000 population	32.5	37.7	46.1	43.2	47.4	52.2
Placed June deadline applicants per 10,000	6.0	5.4	7.4	6.9	7.8	9.7
All placed applicants per 10,000 population	6.5	6.2	8.6	9.5	11.4	13.1

P.2 18 year old applications

Statistic	2012	2013	2014	2015	2016	2017
June deadline applications	2,560	2,925	3,540	3,390	3,625	3,955
Offers	1,850	2,100	2,550	2,355	2,570	3,040
Offer rate	72.2%	71.9%	72.1%	69.5%	70.9%	76.9%

P.3 18 year old applicants by sex

Statistic	Sex	2012	2013	2014	2015	2016	2017
June deadline applicants	Men	755	970	1,135	1,085	1,225	1,380
	Women	1,755	1,900	2,335	2,220	2,325	2,490
Placed June deadline applicants	Men	140	125	185	160	215	275
	Women	325	285	375	365	370	440
All placed applicants	Men	150	145	215	235	305	370
	Women	350	330	430	495	550	595
June deadline applicants per 10,000 population	Men	19.1	24.9	29.4	27.7	31.9	36.4
	Women	46.6	51.3	63.8	59.5	63.6	68.9
Placed June deadline applicants per 10,000 population	Men	3.5	3.2	4.8	4.1	5.6	7.2
	Women	8.6	7.7	10.2	9.8	10.1	12.2
All placed applicants per 10,000 population	Men	3.7	3.7	5.6	5.9	8.0	9.8
	Women	9.3	8.9	11.7	13.2	15.0	16.5

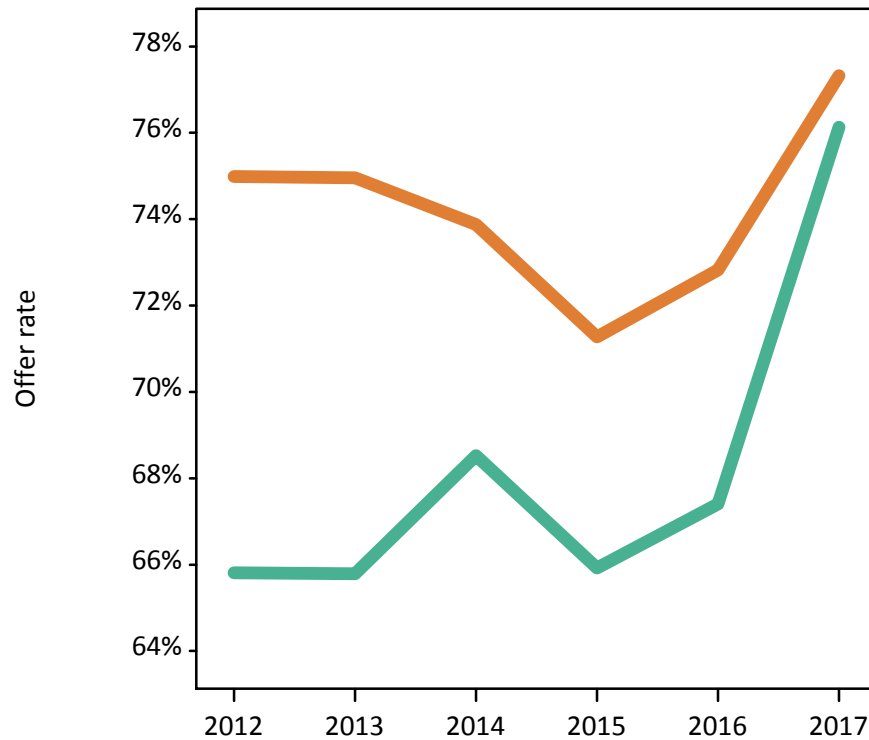
P.4 18 year old applications by sex

Statistic	Sex	2012	2013	2014	2015	2016	2017
June deadline applications	Men	780	990	1,165	1,120	1,260	1,415
	Women	1,785	1,935	2,375	2,270	2,360	2,540
Offers	Men	510	650	800	740	850	1,080
	Women	1,335	1,450	1,755	1,620	1,720	1,965
Offer rate	Men	65.8%	65.8%	68.5%	65.9%	67.4%	76.1%
	Women	75.0%	75.0%	73.9%	71.3%	72.8%	77.3%
Average offer rate	Men	67.8%	67.3%	69.5%	67.1%	68.6%	76.5%
	Women	74.1%	74.2%	73.4%	70.7%	72.2%	77.1%
Percentage point difference between offer rate and average offer rate	Men	-2.0	-1.5	-1.0	-1.2	-1.2	-0.4
	Women	0.9	0.8	0.5	0.6	0.6	0.2
Contribution of group to the average offer rate	Men	0.511	0.519	0.547	0.541	0.562	0.570
	Women	0.787	0.755	0.778	0.773	0.766	0.760

P.5 18 year old offer rate by sex

Note: The line for a group is not plotted when that group made fewer than 10 applications in any of the years from 2012-2017.

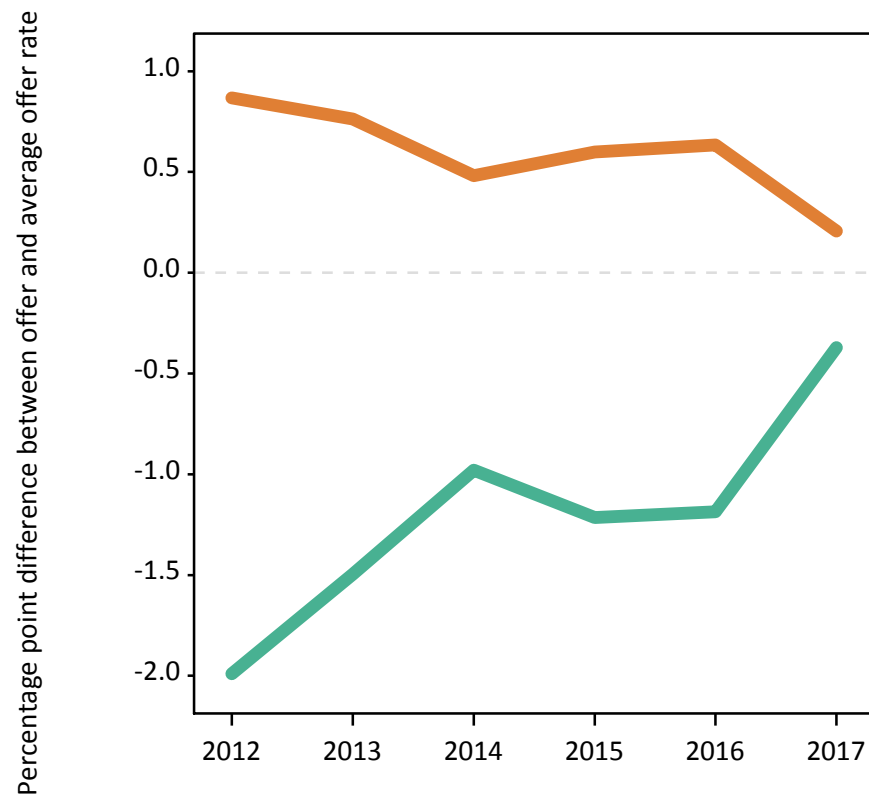
Men
Women



P.6 Percentage point difference between 18 year old offer rate and average offer rate by sex

Note: The line for a group is not plotted when that group made fewer than 50 applications in any of the years from 2012-2017.

Men
Women



P.7 18 year old applicants by POLAR3 quintile

Statistic	POLAR3 quintile	2012	2013	2014	2015	2016	2017
June deadline applicants	Quintile 1	155	190	255	185	205	250
	Quintile 2	285	320	440	385	445	465
	Quintile 3	585	690	885	830	940	1,005
	Quintile 4	655	730	855	895	915	985
	Quintile 5	820	930	1,030	1,005	1,035	1,140
Placed June deadline applicants	Quintile 1	30	20	40	30	30	30
	Quintile 2	55	35	75	50	85	85
	Quintile 3	105	95	135	140	165	190
	Quintile 4	140	115	135	155	145	185
	Quintile 5	135	145	170	155	155	225
All placed applicants	Quintile 1	30	20	45	40	45	40
	Quintile 2	60	40	80	65	100	105
	Quintile 3	115	110	165	205	250	260
	Quintile 4	145	135	160	210	220	260
	Quintile 5	145	165	200	210	235	295
June deadline applicants per 10,000 population	Quintile 1	11.0	13.7	18.3	13.1	15.3	18.6
	Quintile 2	19.0	21.6	30.1	25.9	30.8	32.7
	Quintile 3	37.9	45.4	58.8	54.1	62.7	67.5
	Quintile 4	41.3	46.8	55.5	57.1	59.1	64.6
	Quintile 5	48.7	56.2	63.3	60.2	62.6	69.5
Placed June deadline applicants per 10,000 population	Quintile 1	2.2	1.3	2.9	2.1	2.1	2.4
	Quintile 2	3.6	2.4	5.0	3.2	5.9	5.9
	Quintile 3	6.9	6.1	9.0	9.2	11.0	12.7
	Quintile 4	8.8	7.5	8.9	9.8	9.5	12.0
	Quintile 5	7.9	8.7	10.5	9.2	9.3	13.6
All placed applicants per 10,000 population	Quintile 1	2.2	1.5	3.4	2.7	3.3	3.2
	Quintile 2	3.9	2.8	5.3	4.4	7.1	7.5
	Quintile 3	7.5	7.1	11.0	13.3	16.8	17.5
	Quintile 4	9.2	8.6	10.3	13.4	14.2	17.0
	Quintile 5	8.5	10.1	12.1	12.4	14.2	18.0

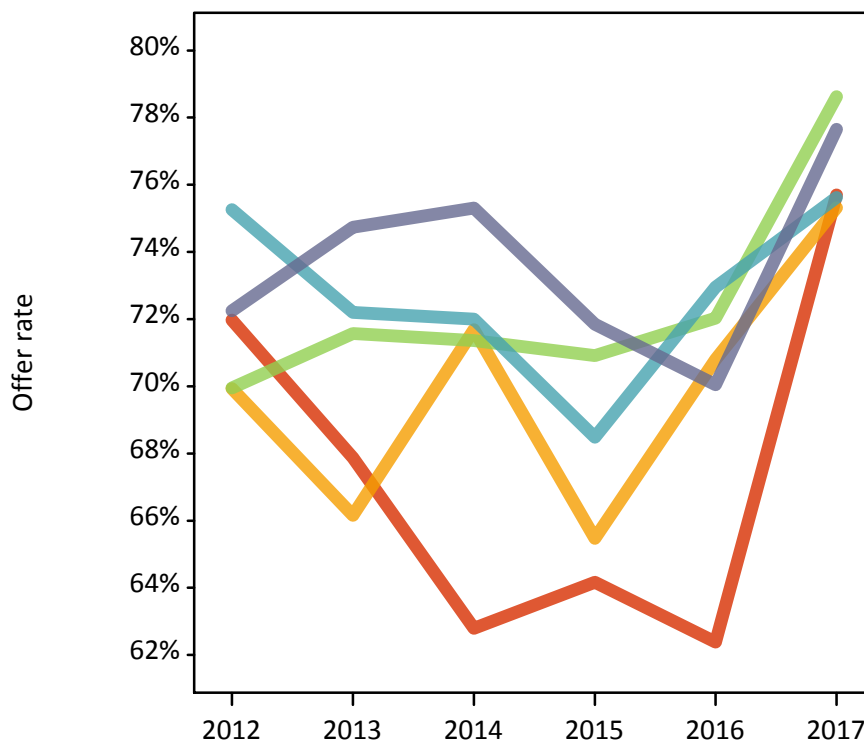
P.8 18 year old applications by POLAR3 quintile

Statistic	POLAR3 quintile	2012	2013	2014	2015	2016	2017
June deadline applications	Quintile 1	155	195	260	185	210	250
	Quintile 2	285	325	445	390	450	480
	Quintile 3	600	705	910	855	960	1,030
	Quintile 4	670	740	875	915	940	1,005
	Quintile 5	835	950	1,050	1,030	1,055	1,170
Offers	Quintile 1	115	130	160	120	130	190
	Quintile 2	200	215	320	255	320	360
	Quintile 3	420	505	650	605	690	810
	Quintile 4	505	535	630	630	685	760
	Quintile 5	605	710	790	740	740	905
Offer rate	Quintile 1	72.0%	67.9%	62.8%	64.2%	62.4%	75.7%
	Quintile 2	69.9%	66.2%	71.7%	65.5%	70.8%	75.3%
	Quintile 3	69.9%	71.6%	71.4%	70.9%	72.0%	78.6%
	Quintile 4	75.3%	72.2%	72.0%	68.5%	72.9%	75.6%
	Quintile 5	72.2%	74.7%	75.3%	71.8%	70.0%	77.7%
Average offer rate	Quintile 1	69.6%	68.6%	66.6%	64.9%	66.1%	76.4%
	Quintile 2	69.0%	65.6%	68.7%	65.0%	70.4%	75.6%
	Quintile 3	70.8%	71.6%	71.8%	69.9%	71.3%	79.0%
	Quintile 4	74.8%	72.3%	73.4%	70.0%	71.6%	75.3%
	Quintile 5	72.8%	74.7%	74.1%	71.4%	71.3%	77.3%
Percentage point difference between offer rate and average offer rate	Quintile 1	2.3	-0.7	-3.9	-0.8	-3.8	-0.7
	Quintile 2	0.9	0.6	3.0	0.4	0.4	-0.3
	Quintile 3	-0.9	-0.0	-0.4	1.0	0.7	-0.4
	Quintile 4	0.5	-0.1	-1.4	-1.5	1.3	0.3
	Quintile 5	-0.5	0.0	1.2	0.5	-1.2	0.4
Contribution of group to the average offer rate	Quintile 1	0.188	0.184	0.183	0.188	0.180	0.180
	Quintile 2	0.241	0.261	0.214	0.217	0.242	0.243
	Quintile 3	0.362	0.360	0.357	0.350	0.369	0.358
	Quintile 4	0.369	0.354	0.337	0.360	0.350	0.344
	Quintile 5	0.427	0.423	0.391	0.421	0.394	0.406

P.9 18 year old offer rate by POLAR3 quintile

Note: The line for a group is not plotted when that group made fewer than 10 applications in any of the years from 2012-2017.

- Quintile 1
- Quintile 2
- Quintile 3
- Quintile 4
- Quintile 5



P.10 Percentage point difference between 18 year old offer rate and average offer rate by POLAR3 quintile

Note: The line for a group is not plotted when that group made fewer than 50 applications in any of the years from 2012-2017.

- Quintile 1
- Quintile 2
- Quintile 3
- Quintile 4
- Quintile 5



P.11 18 year old applicants by ethnic group

Statistic	Ethnic group	2012	2013	2014	2015	2016	2017
June deadline applicants	Asian	410	520	565	650	815	965
	Black	235	280	320	330	370	370
	Mixed	185	210	250	255	250	345
	White	1,585	1,745	2,180	1,900	1,925	1,960
	Other	75	90	125	130	145	185
Placed June deadline applicants	Asian	70	70	75	95	135	155
	Black	40	20	45	55	55	65
	Mixed	35	30	35	50	30	70
	White	305	275	370	300	325	390
	Other	10	5	20	20	25	25
All placed applicants	Asian	80	85	95	185	230	260
	Black	45	30	55	75	100	100
	Mixed	35	40	50	60	55	90
	White	325	310	420	365	410	470
	Other	15	10	20	30	40	40
June deadline applicants per 10,000 population	Asian	63.3	78.8	83.5	91.6	113.4	131.3
	Black	82.7	94.6	104.9	104.0	118.5	118.2
	Mixed	71.4	77.3	87.6	82.4	78.8	106.9
	White	24.6	27.7	35.3	30.5	31.8	33.1
	Other	83.6	98.1	133.2	136.9	143.7	178.6
Placed June deadline applicants per 10,000 population	Asian	11.0	10.5	10.9	13.4	18.6	21.3
	Black	14.2	7.4	15.5	17.3	18.2	21.0
	Mixed	13.1	11.1	12.9	16.2	9.9	21.8
	White	4.7	4.4	6.0	4.8	5.4	6.6
	Other	13.6	6.6	20.4	18.7	24.1	22.3
All placed applicants per 10,000 population	Asian	12.0	12.6	14.2	26.1	32.0	35.1
	Black	16.3	9.8	18.1	23.2	32.3	31.5
	Mixed	13.8	14.4	16.7	20.1	17.5	28.0
	White	5.0	4.9	6.8	5.9	6.8	7.9
	Other	14.7	9.9	21.5	31.1	42.2	37.9

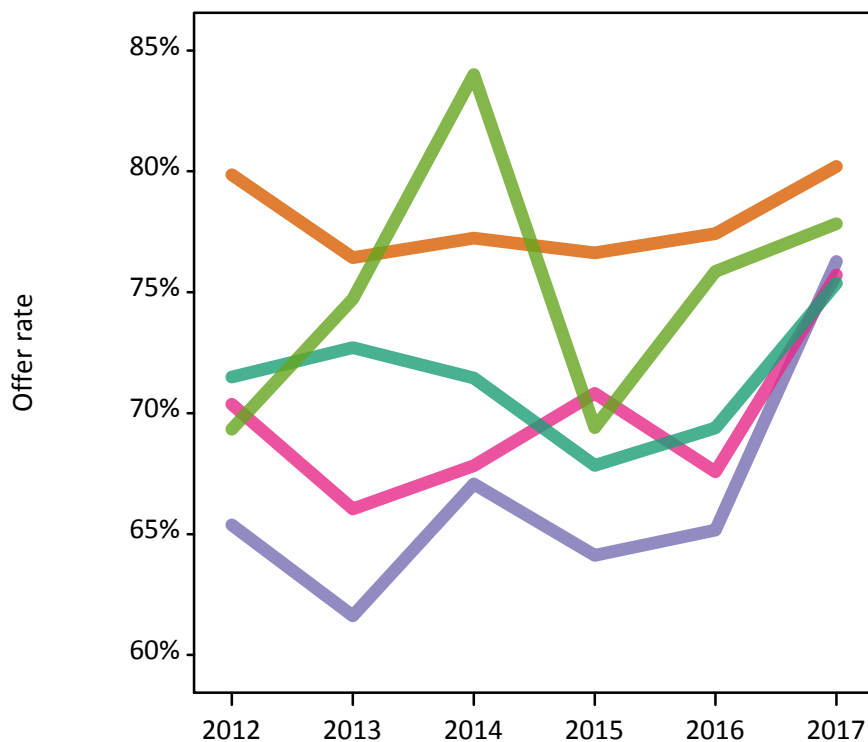
P.12 18 year old applications by ethnic group

Statistic	Ethnic group	2012	2013	2014	2015	2016	2017
June deadline applications	Asian	415	525	570	660	825	980
	Black	235	285	325	340	380	375
	Mixed	190	210	260	255	255	350
	White	1,625	1,780	2,230	1,955	1,970	2,020
	Other	75	90	125	135	145	185
Offers	Asian	335	400	440	505	640	785
	Black	155	175	220	220	245	285
	Mixed	135	140	175	180	175	265
	White	1,160	1,295	1,590	1,325	1,365	1,525
	Other	50	70	105	95	110	145
Offer rate	Asian	79.9%	76.4%	77.2%	76.6%	77.4%	80.2%
	Black	65.4%	61.6%	67.1%	64.1%	65.2%	76.3%
	Mixed	70.4%	66.0%	67.8%	70.8%	67.6%	75.7%
	White	71.5%	72.7%	71.5%	67.8%	69.4%	75.4%
	Other	69.3%	74.7%	84.0%	69.4%	75.9%	77.8%
Average offer rate	Asian	80.2%	77.9%	76.8%	75.8%	75.2%	80.4%
	Black	68.0%	65.5%	67.2%	63.8%	68.0%	78.0%
	Mixed	68.4%	68.8%	68.5%	73.2%	68.8%	76.2%
	White	71.0%	71.5%	71.6%	67.2%	69.6%	75.1%
	Other	75.0%	71.5%	80.1%	76.8%	74.7%	76.7%
Percentage point difference between offer rate and average offer rate	Asian	-0.3	-1.4	0.5	0.9	2.2	-0.2
	Black	-2.6	-3.8	-0.1	0.4	-2.8	-1.8
	Mixed	2.0	-2.8	-0.7	-2.4	-1.2	-0.5
	White	0.5	1.2	-0.2	0.6	-0.2	0.3
	Other	-5.6	3.2	3.9	-7.4	1.1	1.2
Contribution of group to the average offer rate	Asian	0.358	0.384	0.339	0.377	0.400	0.410
	Black	0.290	0.261	0.243	0.241	0.247	0.221
	Mixed	0.203	0.222	0.208	0.208	0.193	0.196
	White	0.727	0.709	0.724	0.689	0.667	0.626
	Other	0.147	0.180	0.148	0.151	0.156	0.157

P.13 18 year old offer rate by ethnic group

Note: The line for a group is not plotted when that group made fewer than 10 applications in any of the years from 2012-2017.

- Asian
- Black
- Mixed
- White
- Other



P.14 Percentage point difference between 18 year old offer rate and average offer rate by ethnic group

Note: The line for a group is not plotted when that group made fewer than 50 applications in any of the years from 2012-2017.

- Asian
- Black
- Mixed
- White
- Other



P.15 Applicants (all ages)

Statistic	2012	2013	2014	2015	2016	2017
June deadline applicants	7,155	7,660	8,730	8,390	8,545	8,710
Placed June deadline applicants	1,325	1,265	1,395	1,445	1,510	1,655
All placed applicants	1,460	1,485	1,675	1,920	2,185	2,255

P.16 Applications (all ages)

Statistic	2012	2013	2014	2015	2016	2017
June deadline applications	7,400	7,965	9,070	8,725	8,855	9,020
Offers	3,740	4,250	4,855	4,750	4,950	5,610
Offer rate	50.5%	53.4%	53.5%	54.5%	55.9%	62.2%

P.17 Applicants (all ages) by sex

Statistic	Sex	2012	2013	2014	2015	2016	2017
June deadline applicants	Men	2,345	2,755	3,085	3,040	3,165	3,225
	Women	4,810	4,905	5,645	5,350	5,380	5,480
Placed June deadline applicants	Men	485	465	510	555	605	655
	Women	840	805	885	890	905	1,000
All placed applicants	Men	525	550	600	745	870	905
	Women	935	935	1,070	1,180	1,315	1,355

P.18 Applications (all ages) by sex

Statistic	Sex	2012	2013	2014	2015	2016	2017
June deadline applications	Men	2,440	2,895	3,220	3,185	3,295	3,355
	Women	4,965	5,070	5,850	5,540	5,555	5,670
Offers	Men	1,235	1,480	1,715	1,755	1,885	2,190
	Women	2,505	2,770	3,140	2,995	3,065	3,420
Offer rate	Men	50.6%	51.2%	53.2%	55.1%	57.1%	65.3%
	Women	50.5%	54.6%	53.7%	54.1%	55.2%	60.3%

P.19 Applicants (all ages) by POLAR3 quintile

Statistic	POLAR3 quintile	2012	2013	2014	2015	2016	2017
June deadline applicants	Quintile 1	465	500	620	515	555	525
	Quintile 2	815	875	1,100	975	1,015	1,030
	Quintile 3	1,900	2,005	2,335	2,230	2,275	2,340
	Quintile 4	1,875	2,020	2,155	2,230	2,230	2,240
	Quintile 5	2,065	2,235	2,500	2,405	2,450	2,510
Placed June deadline applicants	Quintile 1	75	80	95	80	85	80
	Quintile 2	145	115	190	135	180	180
	Quintile 3	345	295	340	380	390	445
	Quintile 4	380	365	355	425	410	450
	Quintile 5	375	410	410	425	440	490
All placed applicants	Quintile 1	80	90	110	100	115	105
	Quintile 2	160	130	205	180	235	240
	Quintile 3	380	350	425	530	605	615
	Quintile 4	420	425	440	555	590	630
	Quintile 5	415	480	490	550	640	655

P.20 Applications (all ages) by POLAR3 quintile

Statistic	POLAR3 quintile	2012	2013	2014	2015	2016	2017
June deadline applications	Quintile 1	470	515	635	535	565	545
	Quintile 2	845	905	1,125	1,005	1,050	1,065
	Quintile 3	1,970	2,085	2,435	2,325	2,360	2,425
	Quintile 4	1,940	2,110	2,240	2,330	2,330	2,320
	Quintile 5	2,135	2,320	2,605	2,490	2,525	2,605
Offers	Quintile 1	215	270	300	260	280	335
	Quintile 2	375	430	575	495	555	645
	Quintile 3	910	1,045	1,250	1,260	1,295	1,490
	Quintile 4	1,055	1,125	1,215	1,275	1,340	1,415
	Quintile 5	1,170	1,370	1,495	1,445	1,470	1,690
Offer rate	Quintile 1	45.3%	51.8%	47.1%	48.5%	49.3%	61.3%
	Quintile 2	44.4%	47.6%	51.0%	49.0%	52.9%	60.5%
	Quintile 3	46.2%	50.1%	51.4%	54.2%	54.8%	61.4%
	Quintile 4	54.3%	53.3%	54.3%	54.8%	57.5%	60.9%
	Quintile 5	54.7%	59.0%	57.5%	58.1%	58.2%	65.0%

P.21 Applicants (all ages) by ethnic group

Statistic	Ethnic group	2012	2013	2014	2015	2016	2017
June deadline applicants	Asian	835	990	1,115	1,235	1,505	1,675
	Black	1,440	1,320	1,425	1,405	1,355	1,340
	Mixed	505	560	650	665	650	770
	White	4,050	4,435	5,155	4,650	4,540	4,405
	Other	210	220	285	290	335	385
Placed June deadline applicants	Asian	155	140	140	190	235	280
	Black	155	105	135	170	185	170
	Mixed	105	95	120	145	115	170
	White	850	870	935	850	880	945
	Other	35	30	45	50	55	65
All placed applicants	Asian	180	175	180	325	425	465
	Black	180	150	190	255	320	290
	Mixed	115	125	150	180	175	215
	White	915	965	1,075	1,035	1,105	1,145
	Other	35	40	50	75	90	95

P.22 Applications (all ages) by ethnic group

Statistic	Ethnic group	2012	2013	2014	2015	2016	2017
June deadline applications	Asian	860	1,015	1,145	1,265	1,540	1,705
	Black	1,480	1,350	1,465	1,450	1,410	1,375
	Mixed	535	590	670	700	685	805
	White	4,185	4,645	5,385	4,850	4,710	4,610
	Other	215	225	290	300	345	385
Offers	Asian	540	650	760	855	1,025	1,250
	Black	390	420	485	535	515	615
	Mixed	285	305	360	410	375	485
	White	2,340	2,675	3,005	2,700	2,725	2,925
	Other	115	140	180	175	220	250
Offer rate	Asian	63.0%	64.0%	66.3%	67.3%	66.7%	73.3%
	Black	26.5%	31.1%	33.2%	37.0%	36.5%	44.9%
	Mixed	53.7%	51.4%	54.1%	58.4%	54.4%	60.2%
	White	55.9%	57.6%	55.8%	55.6%	57.9%	63.5%
	Other	53.5%	61.1%	62.8%	59.0%	63.8%	65.1%

Technical Notes and Definitions

UCAS undergraduate scheme

Adjustment

Adjustment allows applicants who have met and exceeded the terms of their conditional firm offer to seek and find a place at another provider whilst keeping their place at their original firm choice provider.

Clearing

Clearing is a route for applicants that are not placed and holding no offers to find a place on courses with vacancies.

Cycle year

The UCAS application cycle which runs from September to October the following year. For example the 2017 cycle runs from September 2016 through to October 2017.

End of cycle

The point in the cycle to which the numbers in this report refer, and the point at which the cycle is closed such that no more applications or offers can be made, and no more applicants can be placed. Numbers reported at the end of cycle exclude information on a small number of applicants who cancelled during the cycle.

Extra

Applicants who are unsuccessful in obtaining an offer or decline all offers may be eligible to apply through Extra, where they can apply to one further course at a time. Extra operates from 25 February until early July. It provides applicants who are eligible the possibility of obtaining an offer before exam results are published and Clearing starts.

June 30 deadline

The deadline for main scheme applications. Applicants who apply after this date will go directly into Clearing.

Record of Prior Acceptance (RPA)

RPA is an acceptance route used when a provider informs UCAS of applicants it has accepted outside of the normal application process (e.g. individuals who have applied directly to the provider).

Reporting groups

Ethnic group

High level grouping of ethnic origin as declared by the applicant: 'White', 'Black', 'Asian', 'Mixed', 'Other', 'Unknown'. Applicants who declare themselves as 'Unknown' ethnic origin are not reported in these tables, but are included in the associated csv data file.

POLAR3 quintile

Developed by HEFCE, POLAR3 classifies small areas across the UK into five groups according to their level of young participation in Higher Education. Each of these groups represents around 20 per cent of young people and is ranked from Quintile 1 (areas with the lowest young participation rates, considered as the most disadvantaged) to Quintile 5 (highest young participation rates, considered most advantaged). POLAR3 is based on the participation rates of young people between 2005 and 2009 who entered Higher Education between 2005-06 and 2010-11, therefore is most suitable for applicants aged 19 and under. These groups are assigned using the postcode declared by the applicant at the time of their application. If a UK postcode is invalid, considered unsafe for measurement or there is no link to Census geography possible then the applicant is not assigned to a quintile. Applicants with no POLAR3 quintile are not reported.

Sex

Sex as declared by the applicant.

SIMD 2016 quintile

Scottish index of multiple deprivation (SIMD) identifies small area concentrations of multiple deprivation across all of Scotland, providing a relative measure of deprivation amongst 6505 small areas (data zones) based on 7 socio-economic domains. These small areas are classified into five groups ranked from Quintile 1 (considered the most deprived) to Quintile 5 (considered least deprived), with equal populations in each quintile. Quintiles are assigned using the postcode declared by the applicant, applicants declaring invalid postcodes are classified as 'Not assigned' and are not reported.

SIMD is only defined for applicants domiciled in Scotland, therefore any applicants domiciled outside of Scotland cannot be assigned to an SIMD quintile and so are not reported for this measure.

SIMD is only reported for providers in Scotland. Application and entry rates by SIMD are reported in the 2017 End of Cycle Report and the 2017 cycle January deadline application rate report.

Statistics reported in the tables

All placed applicants

The number of applicants placed for entry into higher education at the provider through one of their choices, including any choices made through Extra, or via Adjustment, Clearing or RPA.

All placed applicants per 10,000 population

The number of total UK domiciled 18 year old placed applicants for entry into higher education at the provider divided by the number of UK 18 year olds in the population, multiplied by 10,000. This gives the number of 18 year olds, for every 10,000 in the population, that were placed at the provider through one of their choices, including any choices made through Extra, or via Adjustment, Clearing or RPA. It is an alternative way of expressing the entry rate to a provider. By referencing the underlying population this statistic shows how the number of placed applicants is changing in relation to the available pool of potential applicants and so gives the chance that somebody from the group will be placed at a provider.

This statistic is only reported for 18 year olds.

Average offer rate

The offer rate that you might expect if the predicted grades and subject choice of applicants were the only factors that influenced whether an applicant was made an offer by the provider. The average offer rate is calculated by dividing applicants according to their specific combination of grades (for A levels the best three predicted grades are used, for BTECs, International Baccalaureate and Scottish Highers and Advanced Highers, predicted grades along with any grades already achieved upon applying are used) and subject choice. For each combination the number of main scheme offers is divided by the number of main scheme applications, to give an overall offer rate. This is then multiplied by the number of applications made by the group for which the average offer rate is being calculated (for example POLAR3 quintile 1), to give an average number of offers for that group. These average number of offers are then added together across all combinations of predicted grade and subject and divided by the number of main scheme applications from the group to give the average offer rate.

The average offer rate does not attempt to control for any other factors that may play a part in the decision to make an offer, such as the subject of the qualifications studied, their relevance to a course, or the grade in each subject; higher numbers of A levels being studied; the exact profile of grades predicted; personal statements; teacher references; interviews; or any other criteria (such as work experience or portfolios) that may be part of the admissions decision.

This statistic is only reported for 18 year olds.

Contribution of group to the average offer rate

The way in which the average offer rate is defined means that the pattern of application and offers of a group (for example POLAR3 quintile 1) will always contribute, in part, to the average offer rate for that group. When this contribution is large, the average offer rate will mainly reflect the patterns for the group, meaning that the value of the average offer rate will be similar to the offer rate, the percentage point difference statistic will be small, and any real difference between the offer rate and what might be expected given the predicted grades and subject choices of the applicants will be difficult to detect.

Values of the contribution of group to the average offer rate range between 0 and 1. The closer the value is to 1 the greater the contribution a group makes to its own average offer rate.

This statistic is only reported for 18 year olds.

Placed June deadline applicants

An applicant who has been placed for entry into higher education at the provider through a June deadline application.

Placed June deadline applicants per 10,000 population

The number of UK domiciled 18 year old placed June deadline applicants at the provider divided by the number of UK 18 year olds in the population, multiplied by 10,000. This gives the number of 18 year olds, for every 10,000 in the population, that were placed at the provider through one of their June deadline applications. It is an alternative way of expressing the entry rate to a provider, but for placed June deadline applicants only. By referencing the underlying population this statistic shows how the number of placed June deadline applicants is changing in relation to the available pool of potential 18 year old applicants and so gives the chance that somebody from the group will be placed at a provider through a June deadline application.

This statistic is only reported for 18 year olds.

June deadline applications

An application (or choice) to a course in higher education to the provider that is made by the June 30 deadline. Each applicant can make up to five choices this way. The number of June deadline applications does not include choices made through the following routes: Clearing, Extra, Adjustment and RPAs. Applications made to October deadline courses received after the October deadline are not included in these statistics.

June deadline applicants

The number of applicants that made at least one application to the provider by the June 30 deadline.

June deadline applicants per 10,000 population

The number of UK domiciled 18 year old June deadline applicants to the provider divided by the number of UK 18 year olds in the population, multiplied by 10,000. This gives the number of 18 year olds, for every 10,000 in the population, who applied by the June 30 deadline. It is equivalent to the application rate. By referencing the underlying population this statistic shows how the number of June deadline applicants is changing in relation to the available pool of potential 18 year old applicants and so gives the chance that somebody from the group will apply to a provider by the June 30 deadline.

This statistic is only reported for 18 year olds.

Offers

An offer is defined as a provider's decision in response to an application to offer a place to an applicant, often subject to the applicant satisfying academic and/or other criteria, via a June deadline application (i.e. does not cover choices made through the following routes: Clearing, Extra, Adjustment and RPAs).

Offer rate

The number of offers made divided by the number of June deadline applications. This gives the proportion of all June deadline applications to the provider that received an offer.

Percentage point difference between offer rate and average offer rate

The offer rate minus the average offer rate.

The percentage point difference can be compared to the expected range of statistical variation resulting from the calculation of the average offer rate using the Average Offer Rate Lookup Table. Where the value of the percentage point difference lies outside of this range, the percentage point difference may be considered to represent a real difference between the offer rate and the average offer rate.

Other definitions

Age

This analysis uses country-specific age definitions that align with the cut off points for school and college cohorts within the different administrations of the UK. For England and Wales, ages are defined on the 31 August, for Northern Ireland on the 1 July and for Scotland on the 28 February the following year. Defining ages in this way matches the assignment of children to school cohorts. For applicants outside of the UK a cohort cut off of 31 August has been used. Numbers for applicants aged 17 and under are included in the tables that report numbers for all age groups. Providers in Scotland typically receive a higher proportion of applicants aged 17 and under compared to providers elsewhere in the UK.

Provider

A higher education provider - a university or college.

UK domiciled

Declared area of permanent residence within England, Northern Ireland, Scotland and Wales. Applicants from the Channel Islands and Isle of Man are not included.