

## G50 The University of Gloucestershire

**Cycle years:** 2012 - 2017

**Cycle Reference Point:** End of Cycle

**Applicant coverage:** UK domiciled

**Reporting groups:** Sex, POLAR3, ethnic group

**Applicant statistics:** June deadline applicants, placed June deadline applicants, all placed applicants, June deadline applicants per 10,000 population, placed June deadline applicants per 10,000 population, all placed applicants per 10,000 population

**Application statistics:** June deadline applications, offers, offer rate, average offer rate, percentage point difference between offer rate and average offer rate, contribution of group to the average offer rate

**Non-disclosure controls:** To avoid the disclosure of information about any individual the following measures are taken

- Applicants, placed applicants, applications and offers are rounded to the nearest 5.
- Applicants/placed applicants per 10,000 population figures are reported as 0 if the applicant/placed applicant figures are rounded to 0.
- All statistics related to the offer rate are not reported when the number of applications for a group is less than 10. The percentage point difference between the offer rate and the average offer rate is not reported when the number of applications for a group is less than 50.
- Offer rates are reported as 0% if there are fewer than 5 offers, and 100% if the number of offers is within 5 of the number of applications. When the offer rate is reported as 0% or 100%, it is reported in italics.

### Contents:

18 year old applicants:	P.1
18 year old applications:	P.2
18 year old applicants by sex:	P.3
18 year old applications by sex:	P.4
18 year old applicants by POLAR3 quintile:	P.7
18 year old applications by POLAR3 quintile:	P.8
18 year old applicants by ethnic group:	P.11
18 year old applications by ethnic group:	P.12
Applicants (all ages):	P.15
Applications (all ages):	P.16
Applicants (all ages) by sex:	P.17
Applications (all ages) by sex:	P.18
Applicants (all ages) by POLAR3 quintile:	P.19
Applications (all ages) by POLAR3 quintile:	P.20
Applicants (all ages) by ethnic group:	P.21
Applications (all ages) by ethnic group:	P.22

## P.1 18 year old applicants

Statistic	2012	2013	2014	2015	2016	2017
June deadline applicants	4,925	4,880	4,560	5,070	5,500	4,935
Placed June deadline applicants	925	920	1,005	1,235	1,265	1,175
All placed applicants	1,045	985	1,145	1,350	1,375	1,270
June deadline applicants per 10,000 population	63.7	64.1	60.6	66.2	73.4	66.6
Placed June deadline applicants per 10,000	11.9	12.1	13.4	16.1	16.9	15.8
All placed applicants per 10,000 population	13.5	12.9	15.2	17.6	18.4	17.2

## P.2 18 year old applications

Statistic	2012	2013	2014	2015	2016	2017
June deadline applications	5,130	5,100	4,825	5,335	5,785	5,185
Offers	4,255	4,295	4,240	4,730	5,065	4,545
Offer rate	82.9%	84.3%	87.8%	88.7%	87.5%	87.6%

### P.3 18 year old applicants by sex

Statistic	Sex	2012	2013	2014	2015	2016	2017
June deadline applicants	Men	1,940	1,910	1,815	2,025	2,355	2,040
	Women	2,985	2,965	2,745	3,045	3,145	2,895
Placed June deadline applicants	Men	375	345	405	475	540	525
	Women	550	575	600	760	725	645
All placed applicants	Men	425	375	465	515	595	580
	Women	620	610	680	835	785	695
June deadline applicants per 10,000 population	Men	48.9	48.9	46.9	51.6	61.3	53.7
	Women	79.2	80.1	75.0	81.5	86.0	80.2
Placed June deadline applicants per 10,000 population	Men	9.5	8.9	10.5	12.1	14.0	13.9
	Women	14.5	15.5	16.4	20.4	19.8	17.9
All placed applicants per 10,000 population	Men	10.8	9.6	12.0	13.1	15.4	15.2
	Women	16.4	16.5	18.5	22.3	21.5	19.2

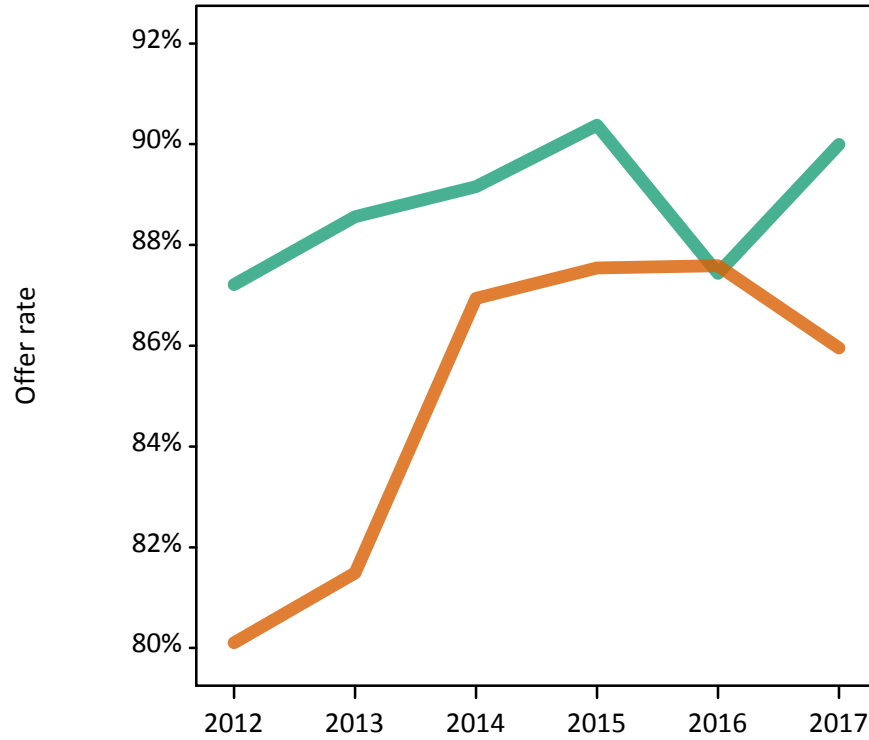
### P.4 18 year old applications by sex

Statistic	Sex	2012	2013	2014	2015	2016	2017
June deadline applications	Men	2,050	2,020	1,945	2,130	2,465	2,160
	Women	3,080	3,080	2,880	3,205	3,320	3,025
Offers	Men	1,785	1,790	1,735	1,925	2,155	1,945
	Women	2,470	2,510	2,505	2,805	2,905	2,600
Offer rate	Men	87.2%	88.6%	89.2%	90.4%	87.4%	90.0%
	Women	80.1%	81.5%	86.9%	87.5%	87.6%	86.0%
Average offer rate	Men	85.1%	87.3%	88.6%	89.8%	87.4%	88.9%
	Women	81.5%	82.3%	87.3%	88.0%	87.6%	86.7%
Percentage point difference between offer rate and average offer rate	Men	2.1	1.3	0.5	0.6	0.1	1.1
	Women	-1.4	-0.8	-0.4	-0.4	-0.1	-0.7
Contribution of group to the average offer rate	Men	0.548	0.579	0.587	0.572	0.585	0.610
	Women	0.699	0.724	0.721	0.715	0.692	0.722

### P.5 18 year old offer rate by sex

Note: The line for a group is not plotted when that group made fewer than 10 applications in any of the years from 2012-2017.

Men  
Women



### P.6 Percentage point difference between 18 year old offer rate and average offer rate by sex

Note: The line for a group is not plotted when that group made fewer than 50 applications in any of the years from 2012-2017.

Men  
Women



## P.7 18 year old applicants by POLAR3 quintile

Statistic	POLAR3 quintile	2012	2013	2014	2015	2016	2017
June deadline applicants	Quintile 1	605	665	660	745	800	705
	Quintile 2	880	910	860	940	1,010	890
	Quintile 3	1,040	960	930	1,030	1,125	1,065
	Quintile 4	1,175	1,200	1,080	1,205	1,305	1,155
	Quintile 5	1,210	1,135	1,020	1,145	1,255	1,100
Placed June deadline applicants	Quintile 1	95	120	160	180	200	150
	Quintile 2	170	190	165	225	230	205
	Quintile 3	195	185	190	255	245	235
	Quintile 4	235	215	255	295	305	305
	Quintile 5	225	205	235	275	285	270
All placed applicants	Quintile 1	115	130	175	200	210	165
	Quintile 2	185	205	195	250	250	220
	Quintile 3	215	200	215	275	275	255
	Quintile 4	265	235	285	325	335	330
	Quintile 5	255	215	265	290	310	295
June deadline applicants per 10,000 population	Quintile 1	42.4	47.8	47.4	53.2	59.4	52.9
	Quintile 2	58.8	61.8	58.9	63.3	69.8	62.8
	Quintile 3	67.4	62.9	61.8	67.1	74.8	71.4
	Quintile 4	74.1	76.7	70.1	76.9	84.4	75.8
	Quintile 5	72.0	68.6	62.5	68.3	75.8	66.9
Placed June deadline applicants per 10,000 population	Quintile 1	6.8	8.8	11.4	13.0	14.7	11.4
	Quintile 2	11.3	12.9	11.4	15.1	15.8	14.3
	Quintile 3	12.6	12.3	12.6	16.5	16.4	15.9
	Quintile 4	14.7	13.8	16.5	19.0	19.8	19.9
	Quintile 5	13.5	12.5	14.3	16.3	17.2	16.5
All placed applicants per 10,000 population	Quintile 1	7.9	9.3	12.6	14.3	15.5	12.3
	Quintile 2	12.5	14.0	13.5	16.9	17.2	15.4
	Quintile 3	14.1	13.0	14.2	18.0	18.2	17.3
	Quintile 4	16.8	14.9	18.6	20.6	21.8	21.6
	Quintile 5	15.3	13.1	16.4	17.4	18.6	17.9

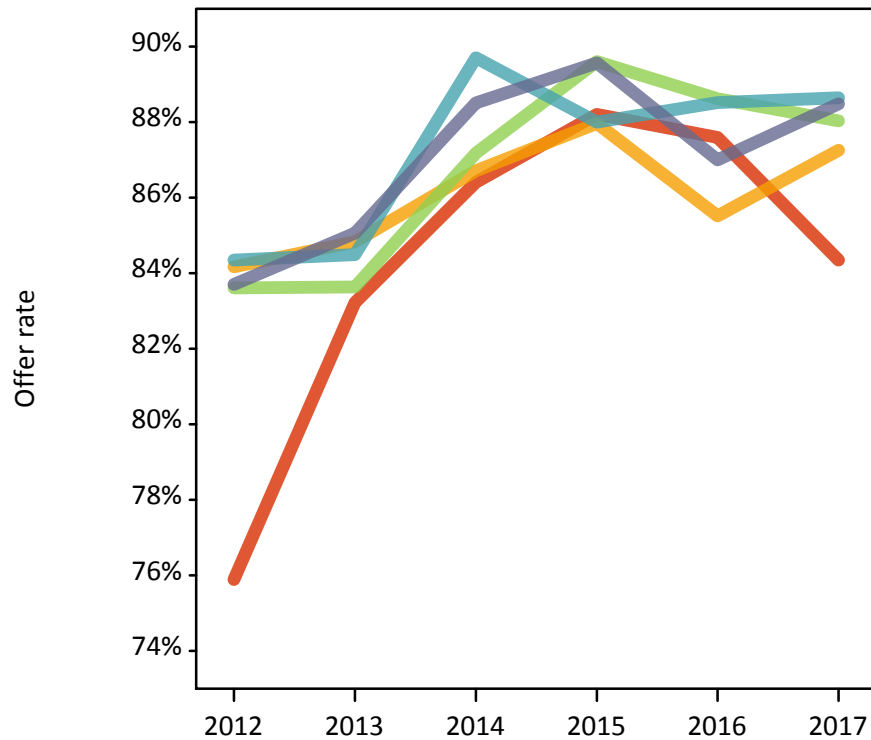
## P.8 18 year old applications by POLAR3 quintile

Statistic	POLAR3 quintile	2012	2013	2014	2015	2016	2017
June deadline applications	Quintile 1	645	710	720	790	845	740
	Quintile 2	920	955	920	1,005	1,070	950
	Quintile 3	1,085	995	990	1,065	1,185	1,110
	Quintile 4	1,215	1,250	1,125	1,260	1,375	1,225
	Quintile 5	1,250	1,180	1,060	1,205	1,300	1,135
Offers	Quintile 1	490	590	625	695	740	625
	Quintile 2	775	810	795	885	915	830
	Quintile 3	910	835	865	955	1,050	980
	Quintile 4	1,025	1,055	1,010	1,105	1,220	1,085
	Quintile 5	1,050	1,000	940	1,080	1,130	1,005
Offer rate	Quintile 1	75.9%	83.2%	86.4%	88.2%	87.6%	84.3%
	Quintile 2	84.2%	84.8%	86.7%	88.0%	85.5%	87.2%
	Quintile 3	83.6%	83.6%	87.2%	89.6%	88.6%	88.0%
	Quintile 4	84.3%	84.5%	89.7%	88.0%	88.5%	88.6%
	Quintile 5	83.7%	85.1%	88.5%	89.6%	87.0%	88.5%
Average offer rate	Quintile 1	80.3%	83.7%	87.6%	89.2%	88.0%	86.7%
	Quintile 2	83.6%	85.2%	87.3%	88.7%	87.4%	88.6%
	Quintile 3	82.9%	84.3%	87.9%	88.9%	88.4%	87.7%
	Quintile 4	83.3%	84.4%	88.6%	88.5%	87.7%	87.7%
	Quintile 5	83.5%	84.0%	87.6%	88.4%	86.2%	87.2%
Percentage point difference between offer rate and average offer rate	Quintile 1	-4.4	-0.5	-1.2	-1.1	-0.4	-2.4
	Quintile 2	0.5	-0.4	-0.6	-0.8	-1.9	-1.3
	Quintile 3	0.7	-0.7	-0.8	0.7	0.2	0.3
	Quintile 4	1.1	0.1	1.1	-0.5	0.8	0.9
	Quintile 5	0.3	1.1	0.9	1.2	0.8	1.3
Contribution of group to the average offer rate	Quintile 1	0.224	0.248	0.248	0.238	0.232	0.232
	Quintile 2	0.265	0.282	0.296	0.265	0.265	0.269
	Quintile 3	0.291	0.276	0.291	0.272	0.276	0.303
	Quintile 4	0.313	0.329	0.324	0.318	0.315	0.325
	Quintile 5	0.341	0.328	0.335	0.320	0.312	0.322

### P.9 18 year old offer rate by POLAR3 quintile

Note: The line for a group is not plotted when that group made fewer than 10 applications in any of the years from 2012-2017.

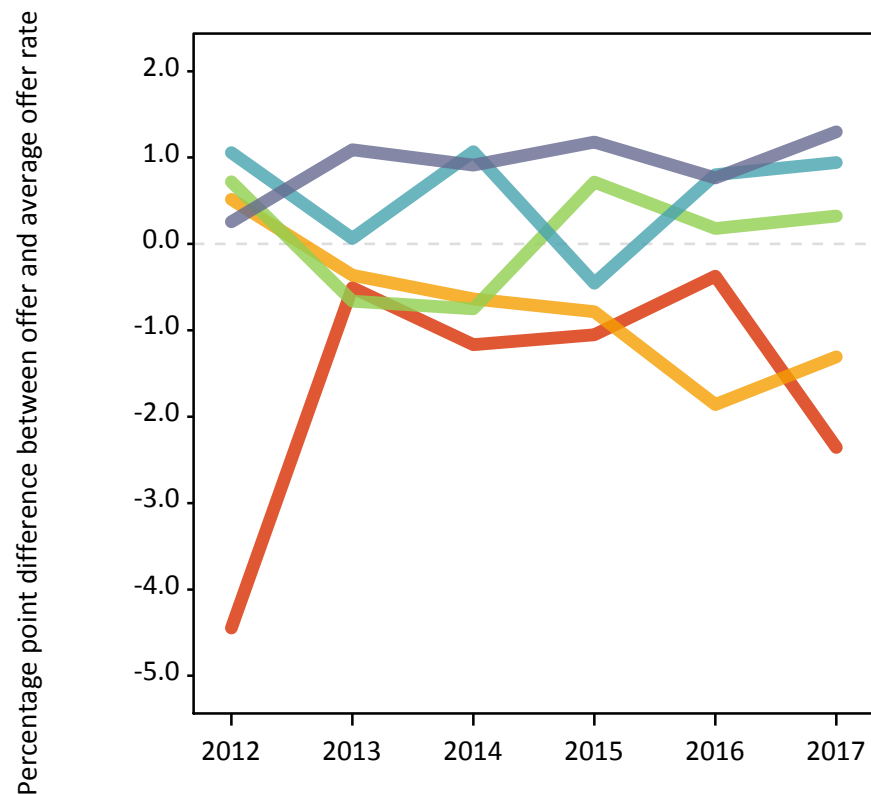
- Quintile 1
- Quintile 2
- Quintile 3
- Quintile 4
- Quintile 5



### P.10 Percentage point difference between 18 year old offer rate and average offer rate by POLAR3 quintile

Note: The line for a group is not plotted when that group made fewer than 50 applications in any of the years from 2012-2017.

- Quintile 1
- Quintile 2
- Quintile 3
- Quintile 4
- Quintile 5



## P.11 18 year old applicants by ethnic group

Statistic	Ethnic group	2012	2013	2014	2015	2016	2017
June deadline applicants	Asian	135	140	110	120	195	140
	Black	90	110	75	105	125	95
	Mixed	140	95	115	150	165	160
	White	4,525	4,500	4,245	4,670	4,965	4,505
	Other	25	20	15	15	35	25
Placed June deadline applicants	Asian	20	20	15	20	30	25
	Black	10	10	15	15	20	25
	Mixed	25	15	20	30	40	30
	White	860	870	950	1,165	1,170	1,095
	Other	5	0	0	5	5	0
All placed applicants	Asian	30	25	20	25	35	25
	Black	10	10	15	25	20	25
	Mixed	30	15	30	35	45	35
	White	965	930	1,075	1,255	1,270	1,180
	Other	5	0	0	5	5	0
June deadline applicants per 10,000 population	Asian	21.0	21.5	16.4	17.2	27.0	18.9
	Black	31.6	36.7	24.1	33.6	39.6	30.5
	Mixed	54.1	35.9	39.3	49.0	53.1	50.2
	White	70.1	71.5	68.8	74.9	82.1	75.9
	Other	26.0	19.9	15.0	17.6	34.2	23.3
Placed June deadline applicants per 10,000 population	Asian	3.1	3.2	2.2	3.1	4.2	3.1
	Black	2.8	3.0	4.3	4.1	6.1	7.3
	Mixed	10.4	5.5	7.6	9.4	13.0	9.7
	White	13.3	13.9	15.4	18.7	19.3	18.4
	Other	5.7	0.0	0.0	6.2	4.0	0.0
All placed applicants per 10,000 population	Asian	4.5	3.5	3.2	3.8	4.7	3.7
	Black	4.3	4.0	5.3	7.5	7.0	7.9
	Mixed	11.9	5.9	10.1	11.0	14.3	10.6
	White	14.9	14.8	17.4	20.1	21.0	19.9
	Other	5.7	0.0	0.0	7.3	4.0	0.0



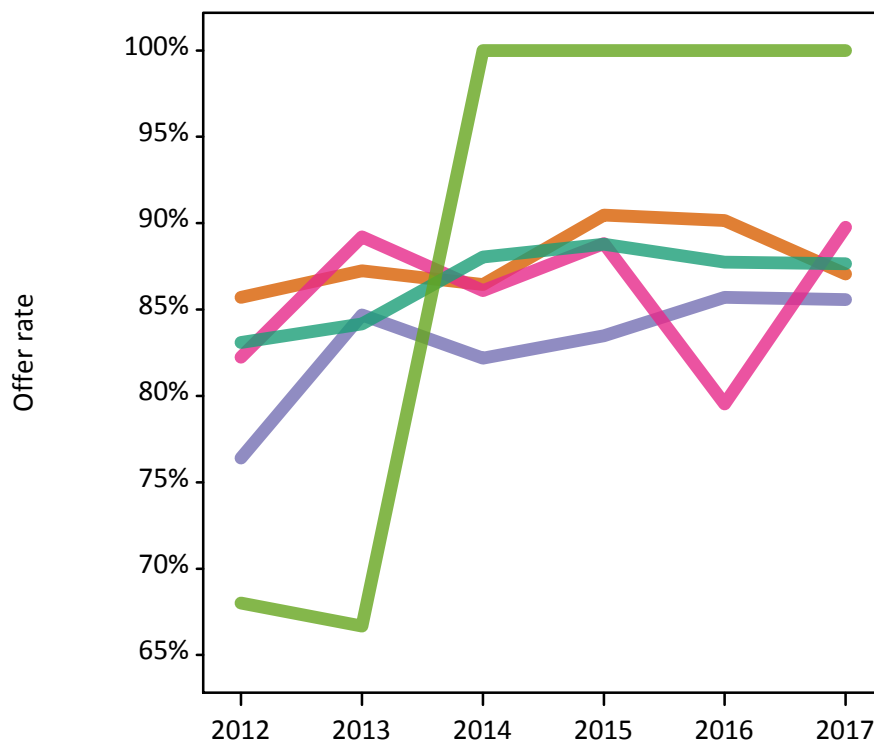
## P.12 18 year old applications by ethnic group

Statistic	Ethnic group	2012	2013	2014	2015	2016	2017
June deadline applications	Asian	140	150	120	125	205	140
	Black	90	110	75	110	125	95
	Mixed	150	100	115	160	170	165
	White	4,715	4,705	4,495	4,915	5,235	4,750
	Other	25	20	15	15	35	25
Offers	Asian	120	130	100	115	185	120
	Black	70	95	60	90	110	85
	Mixed	125	90	100	145	135	150
	White	3,915	3,960	3,960	4,365	4,595	4,160
	Other	15	10	10	15	30	20
Offer rate	Asian	85.7%	87.2%	86.4%	90.5%	90.1%	87.1%
	Black	76.4%	84.7%	82.2%	83.5%	85.7%	85.6%
	Mixed	82.2%	89.2%	86.1%	88.8%	79.5%	89.8%
	White	83.1%	84.2%	88.0%	88.8%	87.7%	87.7%
	Other	68.0%	66.7%	100.0%	100.0%	100.0%	100.0%
Average offer rate	Asian	90.5%	88.8%	92.4%	91.1%	91.3%	89.2%
	Black	81.8%	83.6%	85.7%	86.0%	88.5%	86.6%
	Mixed	79.8%	88.9%	87.2%	90.2%	84.5%	88.2%
	White	82.8%	84.1%	87.8%	88.7%	87.4%	87.6%
	Other	81.3%	81.2%	85.1%	80.7%	88.8%	85.7%
Percentage point difference between offer rate and average offer rate	Asian	-4.8	-1.6	-5.9	-0.6	-1.1	-2.2
	Black	-5.4	1.1	-3.5	-2.5	-2.8	-1.0
	Mixed	2.5	0.3	-1.1	-1.4	-5.0	1.6
	White	0.2	0.1	0.3	0.1	0.3	0.1
	Other	N/A	N/A	N/A	N/A	N/A	N/A
Contribution of group to the average offer rate	Asian	0.167	0.175	0.189	0.143	0.160	0.166
	Black	0.131	0.161	0.118	0.115	0.110	0.098
	Mixed	0.156	0.135	0.137	0.100	0.122	0.157
	White	0.930	0.934	0.941	0.930	0.917	0.927
	Other	0.150	0.098	0.079	0.089	0.110	0.122

### P.13 18 year old offer rate by ethnic group

Note: The line for a group is not plotted when that group made fewer than 10 applications in any of the years from 2012-2017.

- Asian
- Black
- Mixed
- White
- Other



### P.14 Percentage point difference between 18 year old offer rate and average offer rate by ethnic group

Note: The line for a group is not plotted when that group made fewer than 50 applications in any of the years from 2012-2017.

- Asian
- Black
- Mixed
- White
- Other



### P.15 Applicants (all ages)

Statistic	2012	2013	2014	2015	2016	2017
June deadline applicants	8,215	8,340	7,610	8,210	8,920	8,120
Placed June deadline applicants	1,800	1,840	1,875	2,135	2,320	2,200
All placed applicants	2,150	2,055	2,255	2,475	2,665	2,515

### P.16 Applications (all ages)

Statistic	2012	2013	2014	2015	2016	2017
June deadline applications	8,685	8,905	8,160	8,725	9,500	8,650
Offers	6,660	7,105	6,805	7,490	7,990	7,285
Offer rate	76.7%	79.8%	83.4%	85.9%	84.1%	84.2%

### P.17 Applicants (all ages) by sex

Statistic	Sex	2012	2013	2014	2015	2016	2017
June deadline applicants	Men	3,495	3,515	3,195	3,475	3,975	3,425
	Women	4,720	4,825	4,415	4,735	4,945	4,695
Placed June deadline applicants	Men	780	725	790	875	1,020	940
	Women	1,020	1,115	1,085	1,265	1,295	1,260
All placed applicants	Men	945	820	960	1,005	1,180	1,070
	Women	1,210	1,240	1,295	1,470	1,485	1,440

### P.18 Applications (all ages) by sex

Statistic	Sex	2012	2013	2014	2015	2016	2017
June deadline applications	Men	3,740	3,800	3,450	3,715	4,235	3,670
	Women	4,945	5,110	4,710	5,010	5,265	4,980
Offers	Men	2,980	3,130	2,935	3,285	3,580	3,200
	Women	3,680	3,975	3,870	4,205	4,410	4,090
Offer rate	Men	79.6%	82.4%	85.0%	88.5%	84.5%	87.1%
	Women	74.5%	77.8%	82.2%	83.9%	83.8%	82.1%

### P.19 Applicants (all ages) by POLAR3 quintile

Statistic	POLAR3 quintile	2012	2013	2014	2015	2016	2017
June deadline applicants	Quintile 1	1,190	1,260	1,230	1,340	1,445	1,265
	Quintile 2	1,520	1,570	1,440	1,545	1,665	1,510
	Quintile 3	1,695	1,635	1,560	1,590	1,810	1,665
	Quintile 4	1,885	1,985	1,720	1,890	2,035	1,850
	Quintile 5	1,905	1,875	1,645	1,830	1,955	1,795
Placed June deadline applicants	Quintile 1	265	275	315	345	400	335
	Quintile 2	320	370	340	405	435	395
	Quintile 3	370	355	350	410	455	415
	Quintile 4	410	430	440	485	525	520
	Quintile 5	425	405	430	490	495	520
All placed applicants	Quintile 1	330	310	375	410	460	395
	Quintile 2	380	410	410	475	505	455
	Quintile 3	440	395	425	465	530	475
	Quintile 4	490	495	520	555	595	585
	Quintile 5	505	450	520	565	570	590

### P.20 Applications (all ages) by POLAR3 quintile

Statistic	POLAR3 quintile	2012	2013	2014	2015	2016	2017
June deadline applications	Quintile 1	1,280	1,370	1,355	1,430	1,540	1,370
	Quintile 2	1,615	1,700	1,535	1,660	1,785	1,630
	Quintile 3	1,775	1,740	1,695	1,670	1,925	1,755
	Quintile 4	1,990	2,115	1,820	1,995	2,175	1,960
	Quintile 5	2,005	1,970	1,740	1,955	2,055	1,905
Offers	Quintile 1	925	1,045	1,095	1,205	1,275	1,095
	Quintile 2	1,255	1,345	1,285	1,415	1,490	1,375
	Quintile 3	1,380	1,370	1,375	1,445	1,630	1,485
	Quintile 4	1,535	1,720	1,560	1,720	1,860	1,680
	Quintile 5	1,555	1,610	1,480	1,700	1,720	1,625
Offer rate	Quintile 1	72.2%	76.2%	80.5%	84.1%	82.7%	80.0%
	Quintile 2	77.6%	79.3%	83.8%	85.1%	83.4%	84.5%
	Quintile 3	77.7%	78.9%	81.2%	86.6%	84.7%	84.4%
	Quintile 4	77.0%	81.3%	85.7%	86.2%	85.6%	85.6%
	Quintile 5	77.7%	81.7%	85.2%	86.9%	83.7%	85.3%

## P.21 Applicants (all ages) by ethnic group

Statistic	Ethnic group	2012	2013	2014	2015	2016	2017
June deadline applicants	Asian	285	275	235	260	350	265
	Black	265	295	240	265	270	265
	Mixed	265	220	230	250	290	295
	White	7,330	7,475	6,855	7,375	7,920	7,210
	Other	35	40	35	35	65	55
Placed June deadline applicants	Asian	50	45	40	50	65	55
	Black	40	45	40	50	50	70
	Mixed	60	40	45	55	70	70
	White	1,630	1,695	1,735	1,965	2,120	1,995
	Other	5	5	5	15	10	5
All placed applicants	Asian	65	55	60	65	85	65
	Black	65	65	70	90	85	100
	Mixed	75	45	65	70	75	85
	White	1,930	1,875	2,040	2,220	2,400	2,245
	Other	5	5	10	15	10	10

## P.22 Applications (all ages) by ethnic group

Statistic	Ethnic group	2012	2013	2014	2015	2016	2017
June deadline applications	Asian	305	295	250	270	365	270
	Black	280	315	255	275	285	300
	Mixed	285	240	235	275	300	305
	White	7,740	7,985	7,365	7,840	8,445	7,685
	Other	40	40	35	40	65	60
Offers	Asian	225	245	200	240	325	230
	Black	180	215	165	210	215	205
	Mixed	215	195	185	230	240	255
	White	5,995	6,400	6,210	6,760	7,135	6,525
	Other	25	30	25	35	55	45
Offer rate	Asian	73.8%	83.3%	80.7%	88.5%	88.8%	84.2%
	Black	64.6%	68.1%	65.4%	75.9%	74.5%	68.3%
	Mixed	74.5%	80.8%	79.9%	85.0%	79.5%	84.3%
	White	77.4%	80.2%	84.3%	86.2%	84.5%	84.9%
	Other	64.1%	66.7%	72.2%	78.6%	86.2%	76.3%

## Technical Notes and Definitions

### UCAS undergraduate scheme

#### Adjustment

Adjustment allows applicants who have met and exceeded the terms of their conditional firm offer to seek and find a place at another provider whilst keeping their place at their original firm choice provider.

#### Clearing

Clearing is a route for applicants that are not placed and holding no offers to find a place on courses with vacancies.

#### Cycle year

The UCAS application cycle which runs from September to October the following year. For example the 2017 cycle runs from September 2016 through to October 2017.

#### End of cycle

The point in the cycle to which the numbers in this report refer, and the point at which the cycle is closed such that no more applications or offers can be made, and no more applicants can be placed. Numbers reported at the end of cycle exclude information on a small number of applicants who cancelled during the cycle.

#### Extra

Applicants who are unsuccessful in obtaining an offer or decline all offers may be eligible to apply through Extra, where they can apply to one further course at a time. Extra operates from 25 February until early July. It provides applicants who are eligible the possibility of obtaining an offer before exam results are published and Clearing starts.

#### June 30 deadline

The deadline for main scheme applications. Applicants who apply after this date will go directly into Clearing.

#### Record of Prior Acceptance (RPA)

RPA is an acceptance route used when a provider informs UCAS of applicants it has accepted outside of the normal application process (e.g. individuals who have applied directly to the provider).

### Reporting groups

#### Ethnic group

High level grouping of ethnic origin as declared by the applicant: 'White', 'Black', 'Asian', 'Mixed', 'Other', 'Unknown'. Applicants who declare themselves as 'Unknown' ethnic origin are not reported in these tables, but are included in the associated csv data file.

#### POLAR3 quintile

Developed by HEFCE, POLAR3 classifies small areas across the UK into five groups according to their level of young participation in Higher Education. Each of these groups represents around 20 per cent of young people and is ranked from Quintile 1 (areas with the lowest young participation rates, considered as the most disadvantaged) to Quintile 5 (highest young participation rates, considered most advantaged). POLAR3 is based on the participation rates of young people between 2005 and 2009 who entered Higher Education between 2005-06 and 2010-11, therefore is most suitable for applicants aged 19 and under. These groups are assigned using the postcode declared by the applicant at the time of their application. If a UK postcode is invalid, considered unsafe for measurement or there is no link to Census geography possible then the applicant is not assigned to a quintile. Applicants with no POLAR3 quintile are not reported.

#### Sex

Sex as declared by the applicant.

### **SIMD 2016 quintile**

Scottish index of multiple deprivation (SIMD) identifies small area concentrations of multiple deprivation across all of Scotland, providing a relative measure of deprivation amongst 6505 small areas (data zones) based on 7 socio-economic domains. These small areas are classified into five groups ranked from Quintile 1 (considered the most deprived) to Quintile 5 (considered least deprived), with equal populations in each quintile. Quintiles are assigned using the postcode declared by the applicant, applicants declaring invalid postcodes are classified as 'Not assigned' and are not reported.

SIMD is only defined for applicants domiciled in Scotland, therefore any applicants domiciled outside of Scotland cannot be assigned to an SIMD quintile and so are not reported for this measure.

SIMD is only reported for providers in Scotland. Application and entry rates by SIMD are reported in the 2017 End of Cycle Report and the 2017 cycle January deadline application rate report.

### **Statistics reported in the tables**

#### **All placed applicants**

The number of applicants placed for entry into higher education at the provider through one of their choices, including any choices made through Extra, or via Adjustment, Clearing or RPA.

#### **All placed applicants per 10,000 population**

The number of total UK domiciled 18 year old placed applicants for entry into higher education at the provider divided by the number of UK 18 year olds in the population, multiplied by 10,000. This gives the number of 18 year olds, for every 10,000 in the population, that were placed at the provider through one of their choices, including any choices made through Extra, or via Adjustment, Clearing or RPA. It is an alternative way of expressing the entry rate to a provider. By referencing the underlying population this statistic shows how the number of placed applicants is changing in relation to the available pool of potential applicants and so gives the chance that somebody from the group will be placed at a provider.

This statistic is only reported for 18 year olds.

#### **Average offer rate**

The offer rate that you might expect if the predicted grades and subject choice of applicants were the only factors that influenced whether an applicant was made an offer by the provider. The average offer rate is calculated by dividing applicants according to their specific combination of grades (for A levels the best three predicted grades are used, for BTECs, International Baccalaureate and Scottish Highers and Advanced Highers, predicted grades along with any grades already achieved upon applying are used) and subject choice. For each combination the number of main scheme offers is divided by the number of main scheme applications, to give an overall offer rate. This is then multiplied by the number of applications made by the group for which the average offer rate is being calculated (for example POLAR3 quintile 1), to give an average number of offers for that group. These average number of offers are then added together across all combinations of predicted grade and subject and divided by the number of main scheme applications from the group to give the average offer rate.

The average offer rate does not attempt to control for any other factors that may play a part in the decision to make an offer, such as the subject of the qualifications studied, their relevance to a course, or the grade in each subject; higher numbers of A levels being studied; the exact profile of grades predicted; personal statements; teacher references; interviews; or any other criteria (such as work experience or portfolios) that may be part of the admissions decision.

This statistic is only reported for 18 year olds.



### Contribution of group to the average offer rate

The way in which the average offer rate is defined means that the pattern of application and offers of a group (for example POLAR3 quintile 1) will always contribute, in part, to the average offer rate for that group. When this contribution is large, the average offer rate will mainly reflect the patterns for the group, meaning that the value of the average offer rate will be similar to the offer rate, the percentage point difference statistic will be small, and any real difference between the offer rate and what might be expected given the predicted grades and subject choices of the applicants will be difficult to detect.

Values of the contribution of group to the average offer rate range between 0 and 1. The closer the value is to 1 the greater the contribution a group makes to its own average offer rate.

This statistic is only reported for 18 year olds.

### Placed June deadline applicants

An applicant who has been placed for entry into higher education at the provider through a June deadline application.

### Placed June deadline applicants per 10,000 population

The number of UK domiciled 18 year old placed June deadline applicants at the provider divided by the number of UK 18 year olds in the population, multiplied by 10,000. This gives the number of 18 year olds, for every 10,000 in the population, that were placed at the provider through one of their June deadline applications. It is an alternative way of expressing the entry rate to a provider, but for placed June deadline applicants only. By referencing the underlying population this statistic shows how the number of placed June deadline applicants is changing in relation to the available pool of potential 18 year old applicants and so gives the chance that somebody from the group will be placed at a provider through a June deadline application.

This statistic is only reported for 18 year olds.

### June deadline applications

An application (or choice) to a course in higher education to the provider that is made by the June 30 deadline. Each applicant can make up to five choices this way. The number of June deadline applications does not include choices made through the following routes: Clearing, Extra, Adjustment and RPAs. Applications made to October deadline courses received after the October deadline are not included in these statistics.

### June deadline applicants

The number of applicants that made at least one application to the provider by the June 30 deadline.

### June deadline applicants per 10,000 population

The number of UK domiciled 18 year old June deadline applicants to the provider divided by the number of UK 18 year olds in the population, multiplied by 10,000. This gives the number of 18 year olds, for every 10,000 in the population, who applied by the June 30 deadline. It is equivalent to the application rate. By referencing the underlying population this statistic shows how the number of June deadline applicants is changing in relation to the available pool of potential 18 year old applicants and so gives the chance that somebody from the group will apply to a provider by the June 30 deadline.

This statistic is only reported for 18 year olds.

### Offers

An offer is defined as a provider's decision in response to an application to offer a place to an applicant, often subject to the applicant satisfying academic and/or other criteria, via a June deadline application (i.e. does not cover choices made through the following routes: Clearing, Extra, Adjustment and RPAs).

### Offer rate

The number of offers made divided by the number of June deadline applications. This gives the proportion of all June deadline applications to the provider that received an offer.

### Percentage point difference between offer rate and average offer rate

The offer rate minus the average offer rate.

The percentage point difference can be compared to the expected range of statistical variation resulting from the calculation of the average offer rate using the Average Offer Rate Lookup Table. Where the value of the percentage point difference lies outside of this range, the percentage point difference may be considered to represent a real difference between the offer rate and the average offer rate.

### Other definitions

#### Age

This analysis uses country-specific age definitions that align with the cut off points for school and college cohorts within the different administrations of the UK. For England and Wales, ages are defined on the 31 August, for Northern Ireland on the 1 July and for Scotland on the 28 February the following year. Defining ages in this way matches the assignment of children to school cohorts. For applicants outside of the UK a cohort cut off of 31 August has been used. Numbers for applicants aged 17 and under are included in the tables that report numbers for all age groups. Providers in Scotland typically receive a higher proportion of applicants aged 17 and under compared to providers elsewhere in the UK.

#### Provider

A higher education provider - a university or college.

#### UK domiciled

Declared area of permanent residence within England, Northern Ireland, Scotland and Wales. Applicants from the Channel Islands and Isle of Man are not included.