

## D26 De Montfort University

**Cycle years:** 2012 - 2017

**Cycle Reference Point:** End of Cycle

**Applicant coverage:** UK domiciled

**Reporting groups:** Sex, POLAR3, ethnic group

**Applicant statistics:** June deadline applicants, placed June deadline applicants, all placed applicants, June deadline applicants per 10,000 population, placed June deadline applicants per 10,000 population, all placed applicants per 10,000 population

**Application statistics:** June deadline applications, offers, offer rate, average offer rate, percentage point difference between offer rate and average offer rate, contribution of group to the average offer rate

**Non-disclosure controls:** To avoid the disclosure of information about any individual the following measures are taken

- Applicants, placed applicants, applications and offers are rounded to the nearest 5.
- Applicants/placed applicants per 10,000 population figures are reported as 0 if the applicant/placed applicant figures are rounded to 0.
- All statistics related to the offer rate are not reported when the number of applications for a group is less than 10. The percentage point difference between the offer rate and the average offer rate is not reported when the number of applications for a group is less than 50.
- Offer rates are reported as 0% if there are fewer than 5 offers, and 100% if the number of offers is within 5 of the number of applications. When the offer rate is reported as 0% or 100%, it is reported in italics.

### Contents:

18 year old applicants:	P.1
18 year old applications:	P.2
18 year old applicants by sex:	P.3
18 year old applications by sex:	P.4
18 year old applicants by POLAR3 quintile:	P.7
18 year old applications by POLAR3 quintile:	P.8
18 year old applicants by ethnic group:	P.11
18 year old applications by ethnic group:	P.12
Applicants (all ages):	P.15
Applications (all ages):	P.16
Applicants (all ages) by sex:	P.17
Applications (all ages) by sex:	P.18
Applicants (all ages) by POLAR3 quintile:	P.19
Applications (all ages) by POLAR3 quintile:	P.20
Applicants (all ages) by ethnic group:	P.21
Applications (all ages) by ethnic group:	P.22

## P.1 18 year old applicants

Statistic	2012	2013	2014	2015	2016	2017
June deadline applicants	10,190	9,650	9,310	11,145	11,795	12,085
Placed June deadline applicants	1,710	1,730	1,715	2,275	2,630	2,495
All placed applicants	2,060	2,035	2,210	2,905	3,190	3,055
June deadline applicants per 10,000 population	131.7	126.8	123.6	145.4	157.3	163.1
Placed June deadline applicants per 10,000	22.1	22.8	22.7	29.7	35.1	33.7
All placed applicants per 10,000 population	26.6	26.8	29.4	37.9	42.6	41.2

## P.2 18 year old applications

Statistic	2012	2013	2014	2015	2016	2017
June deadline applications	10,890	10,255	9,825	11,715	12,440	12,700
Offers	7,980	8,350	8,275	9,885	10,135	10,785
Offer rate	73.3%	81.4%	84.2%	84.4%	81.5%	84.9%

### P.3 18 year old applicants by sex

Statistic	Sex	2012	2013	2014	2015	2016	2017
June deadline applicants	Men	3,915	3,885	3,770	4,590	5,025	5,025
	Women	6,275	5,760	5,540	6,555	6,770	7,060
Placed June deadline applicants	Men	655	710	730	985	1,205	1,035
	Women	1,060	1,020	985	1,290	1,430	1,460
All placed applicants	Men	795	825	960	1,260	1,460	1,295
	Women	1,265	1,215	1,255	1,645	1,730	1,755
June deadline applicants per 10,000 population	Men	98.7	99.6	97.4	117.0	130.8	132.3
	Women	166.4	155.5	151.3	175.3	185.2	195.5
Placed June deadline applicants per 10,000 population	Men	16.5	18.2	18.8	25.1	31.3	27.3
	Women	28.1	27.6	26.9	34.6	39.1	40.4
All placed applicants per 10,000 population	Men	20.0	21.1	24.7	32.2	38.0	34.1
	Women	33.6	32.7	34.3	44.0	47.4	48.7

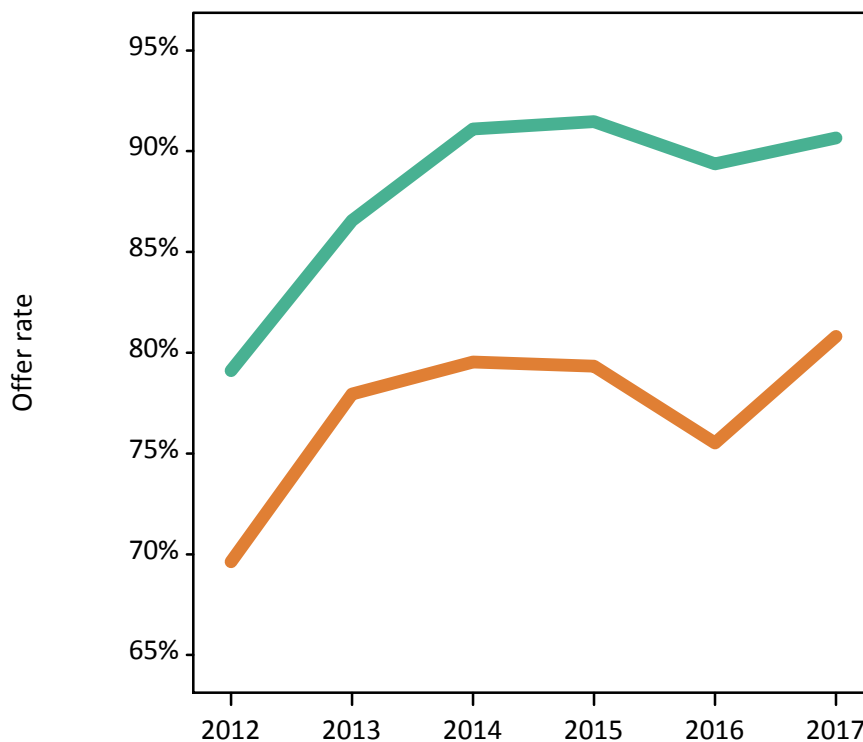
### P.4 18 year old applications by sex

Statistic	Sex	2012	2013	2014	2015	2016	2017
June deadline applications	Men	4,190	4,160	3,980	4,880	5,340	5,290
	Women	6,695	6,095	5,845	6,835	7,105	7,410
Offers	Men	3,315	3,600	3,625	4,465	4,770	4,795
	Women	4,660	4,750	4,650	5,420	5,365	5,990
Offer rate	Men	79.1%	86.6%	91.1%	91.5%	89.4%	90.7%
	Women	69.6%	78.0%	79.5%	79.3%	75.5%	80.8%
Average offer rate	Men	79.6%	87.0%	91.6%	91.9%	89.6%	91.5%
	Women	69.3%	77.7%	79.2%	79.0%	75.4%	80.2%
Percentage point difference between offer rate and average offer rate	Men	-0.5	-0.4	-0.5	-0.4	-0.2	-0.8
	Women	0.3	0.3	0.3	0.3	0.1	0.6
Contribution of group to the average offer rate	Men	0.574	0.598	0.616	0.608	0.617	0.601
	Women	0.733	0.726	0.739	0.720	0.712	0.715

### P.5 18 year old offer rate by sex

Note: The line for a group is not plotted when that group made fewer than 10 applications in any of the years from 2012-2017.

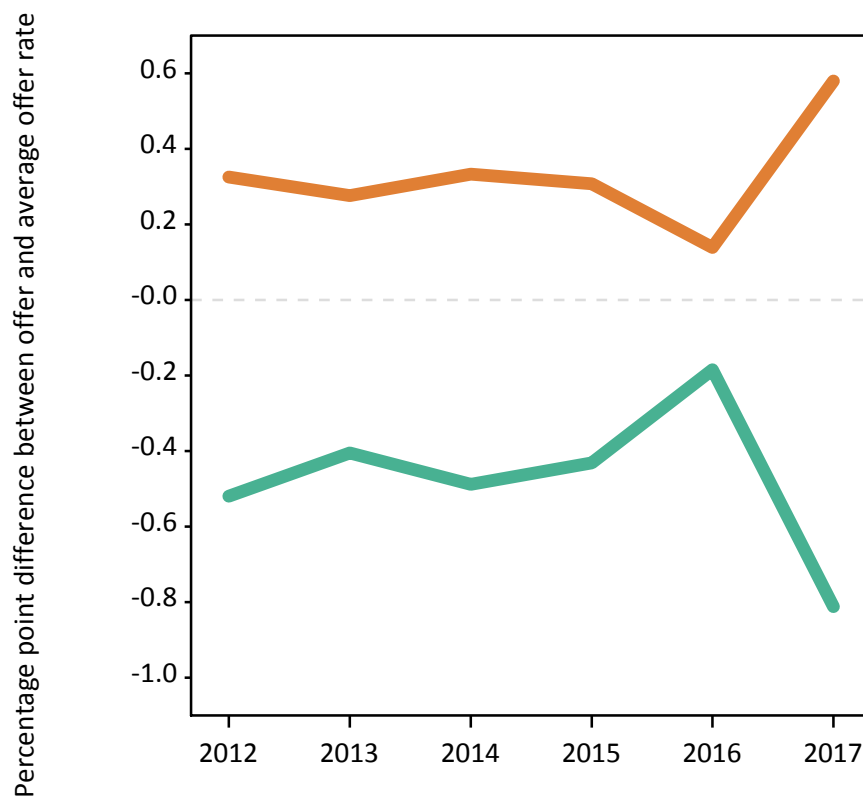
Men  
Women



### P.6 Percentage point difference between 18 year old offer rate and average offer rate by sex

Note: The line for a group is not plotted when that group made fewer than 50 applications in any of the years from 2012-2017.

Men  
Women



## P.7 18 year old applicants by POLAR3 quintile

Statistic	POLAR3 quintile	2012	2013	2014	2015	2016	2017
June deadline applicants	Quintile 1	1,245	1,230	1,280	1,505	1,550	1,660
	Quintile 2	1,985	1,925	1,915	2,435	2,510	2,505
	Quintile 3	2,195	2,130	2,020	2,450	2,650	2,715
	Quintile 4	2,300	2,185	1,965	2,350	2,570	2,565
	Quintile 5	2,450	2,170	2,110	2,380	2,495	2,600
Placed June deadline applicants	Quintile 1	215	235	235	320	315	345
	Quintile 2	285	330	305	480	520	510
	Quintile 3	375	375	370	495	590	540
	Quintile 4	425	400	385	500	620	565
	Quintile 5	410	390	415	475	585	525
All placed applicants	Quintile 1	255	275	295	390	390	420
	Quintile 2	340	395	395	595	620	605
	Quintile 3	440	435	470	640	710	655
	Quintile 4	510	480	500	640	755	700
	Quintile 5	510	450	545	635	710	660
June deadline applicants per 10,000 population	Quintile 1	87.3	88.1	91.9	107.4	115.0	124.7
	Quintile 2	132.5	130.6	130.9	164.1	173.4	176.4
	Quintile 3	142.3	139.7	134.2	159.6	176.1	182.4
	Quintile 4	144.9	139.6	127.4	150.1	166.5	168.1
	Quintile 5	145.9	131.2	129.5	142.3	151.1	158.4
Placed June deadline applicants per 10,000 population	Quintile 1	15.1	16.9	16.8	23.0	23.5	25.8
	Quintile 2	19.1	22.5	21.0	32.2	35.9	35.8
	Quintile 3	24.2	24.5	24.5	32.3	39.2	36.3
	Quintile 4	26.7	25.4	25.0	32.0	40.1	37.0
	Quintile 5	24.5	23.5	25.4	28.5	35.4	32.0
All placed applicants per 10,000 population	Quintile 1	17.8	19.6	21.3	27.9	28.9	31.7
	Quintile 2	22.7	26.7	26.9	40.0	42.9	42.5
	Quintile 3	28.4	28.5	31.3	41.6	47.4	44.1
	Quintile 4	32.2	30.8	32.6	41.0	48.9	45.7
	Quintile 5	30.5	27.2	33.4	38.1	43.1	40.3

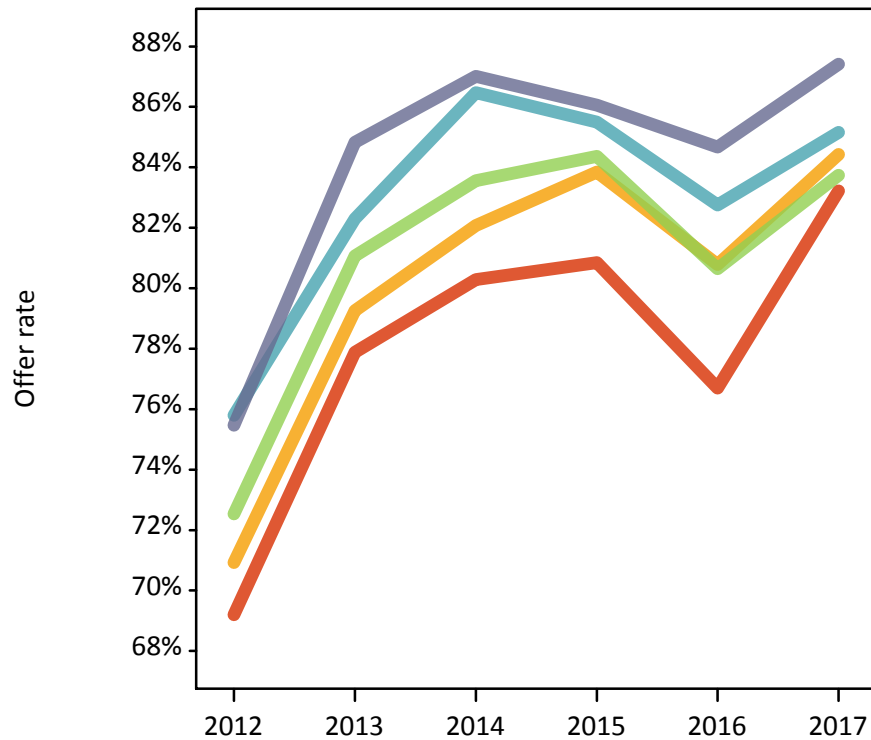
## P.8 18 year old applications by POLAR3 quintile

Statistic	POLAR3 quintile	2012	2013	2014	2015	2016	2017
June deadline applications	Quintile 1	1,345	1,305	1,345	1,565	1,630	1,735
	Quintile 2	2,100	2,035	2,010	2,570	2,640	2,640
	Quintile 3	2,310	2,240	2,115	2,550	2,790	2,835
	Quintile 4	2,485	2,345	2,105	2,475	2,725	2,710
	Quintile 5	2,635	2,315	2,230	2,530	2,635	2,740
Offers	Quintile 1	930	1,020	1,080	1,265	1,250	1,445
	Quintile 2	1,490	1,615	1,650	2,155	2,130	2,230
	Quintile 3	1,675	1,815	1,770	2,150	2,250	2,375
	Quintile 4	1,885	1,930	1,820	2,115	2,255	2,305
	Quintile 5	1,990	1,960	1,940	2,180	2,230	2,395
Offer rate	Quintile 1	69.2%	77.9%	80.3%	80.8%	76.7%	83.2%
	Quintile 2	70.9%	79.3%	82.1%	83.8%	80.8%	84.4%
	Quintile 3	72.5%	81.1%	83.6%	84.4%	80.6%	83.7%
	Quintile 4	75.8%	82.3%	86.5%	85.5%	82.8%	85.2%
	Quintile 5	75.5%	84.8%	87.0%	86.1%	84.7%	87.4%
Average offer rate	Quintile 1	69.3%	79.2%	82.1%	82.2%	78.9%	83.0%
	Quintile 2	72.3%	79.4%	82.4%	84.1%	81.0%	84.1%
	Quintile 3	73.2%	81.6%	83.7%	84.2%	81.0%	84.1%
	Quintile 4	74.2%	82.2%	85.0%	84.9%	81.9%	85.4%
	Quintile 5	75.2%	83.6%	86.9%	85.7%	83.7%	87.2%
Percentage point difference between offer rate and average offer rate	Quintile 1	-0.1	-1.3	-1.8	-1.4	-2.2	0.2
	Quintile 2	-1.4	-0.2	-0.4	-0.3	-0.2	0.3
	Quintile 3	-0.7	-0.5	-0.1	0.2	-0.3	-0.3
	Quintile 4	1.6	0.1	1.5	0.6	0.8	-0.3
	Quintile 5	0.2	1.2	0.1	0.4	1.0	0.2
Contribution of group to the average offer rate	Quintile 1	0.194	0.201	0.208	0.190	0.186	0.183
	Quintile 2	0.254	0.269	0.274	0.266	0.262	0.257
	Quintile 3	0.265	0.276	0.284	0.266	0.268	0.266
	Quintile 4	0.283	0.289	0.275	0.261	0.269	0.262
	Quintile 5	0.310	0.298	0.312	0.279	0.267	0.280

### P.9 18 year old offer rate by POLAR3 quintile

Note: The line for a group is not plotted when that group made fewer than 10 applications in any of the years from 2012-2017.

- Quintile 1
- Quintile 2
- Quintile 3
- Quintile 4
- Quintile 5



### P.10 Percentage point difference between 18 year old offer rate and average offer rate by POLAR3 quintile

Note: The line for a group is not plotted when that group made fewer than 50 applications in any of the years from 2012-2017.

- Quintile 1
- Quintile 2
- Quintile 3
- Quintile 4
- Quintile 5



## P.11 18 year old applicants by ethnic group

Statistic	Ethnic group	2012	2013	2014	2015	2016	2017
June deadline applicants	Asian	1,980	1,840	1,935	2,220	2,340	2,330
	Black	1,045	1,135	1,070	1,450	1,755	1,935
	Mixed	370	385	370	495	525	625
	White	6,685	6,145	5,805	6,775	6,945	6,935
	Other	75	115	95	150	160	185
Placed June deadline applicants	Asian	355	375	425	495	555	520
	Black	185	220	205	355	440	460
	Mixed	60	65	70	105	135	130
	White	1,095	1,045	990	1,290	1,470	1,345
	Other	10	20	20	25	20	35
All placed applicants	Asian	490	500	600	680	715	705
	Black	240	295	310	545	610	605
	Mixed	75	80	85	130	160	155
	White	1,230	1,130	1,175	1,495	1,655	1,530
	Other	15	25	30	40	30	45
June deadline applicants per 10,000 population	Asian	305.7	278.7	285.0	313.4	325.5	316.8
	Black	371.1	382.6	353.0	454.9	560.6	614.6
	Mixed	142.4	142.4	128.3	160.2	167.2	194.7
	White	103.5	97.7	94.1	108.8	114.8	116.8
	Other	82.5	124.6	103.1	154.6	159.8	181.5
Placed June deadline applicants per 10,000 population	Asian	54.5	57.2	62.4	69.9	77.1	70.5
	Black	65.7	73.4	67.3	111.2	140.9	145.5
	Mixed	23.8	23.7	23.6	33.4	42.6	40.2
	White	17.0	16.6	16.0	20.7	24.3	22.7
	Other	11.3	21.0	21.5	25.9	21.1	32.0
All placed applicants per 10,000 population	Asian	76.0	75.8	88.6	96.2	99.5	96.0
	Black	85.2	99.0	102.3	171.5	195.2	191.6
	Mixed	28.0	29.6	29.9	41.5	51.2	48.9
	White	19.0	18.0	19.1	24.0	27.4	25.8
	Other	18.1	26.5	30.1	40.5	30.1	43.7



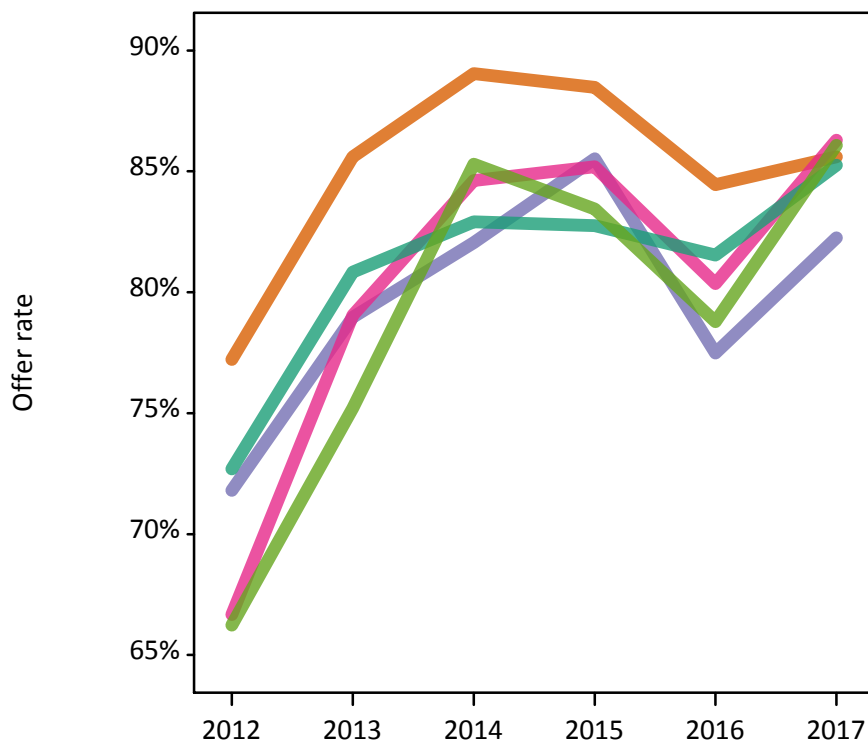
## P.12 18 year old applications by ethnic group

Statistic	Ethnic group	2012	2013	2014	2015	2016	2017
June deadline applications	Asian	2,245	2,055	2,120	2,400	2,550	2,525
	Black	1,090	1,165	1,105	1,470	1,800	1,975
	Mixed	385	400	390	520	550	650
	White	7,055	6,480	6,075	7,100	7,305	7,275
	Other	75	115	100	155	165	195
Offers	Asian	1,730	1,760	1,885	2,125	2,155	2,165
	Black	780	920	905	1,260	1,395	1,625
	Mixed	260	315	330	445	440	560
	White	5,130	5,240	5,035	5,875	5,955	6,200
	Other	50	90	85	130	130	165
Offer rate	Asian	77.2%	85.6%	89.0%	88.5%	84.4%	85.6%
	Black	71.8%	79.0%	82.0%	85.5%	77.5%	82.2%
	Mixed	66.7%	79.1%	84.6%	85.2%	80.4%	86.3%
	White	72.7%	80.8%	82.9%	82.8%	81.5%	85.3%
	Other	66.2%	75.2%	85.3%	83.4%	78.8%	86.1%
Average offer rate	Asian	78.1%	85.5%	88.5%	87.6%	83.7%	86.8%
	Black	74.3%	81.7%	84.9%	85.6%	80.4%	83.4%
	Mixed	71.4%	80.1%	85.5%	85.7%	81.5%	85.5%
	White	71.7%	80.2%	82.5%	82.9%	80.9%	84.5%
	Other	71.0%	78.7%	85.0%	86.7%	82.7%	87.3%
Percentage point difference between offer rate and average offer rate	Asian	-0.9	0.1	0.6	0.8	0.7	-1.2
	Black	-2.5	-2.7	-2.9	-0.1	-2.9	-1.1
	Mixed	-4.7	-1.0	-0.9	-0.5	-1.1	0.8
	White	1.0	0.6	0.4	-0.1	0.7	0.7
	Other	-4.8	-3.4	0.3	-3.3	-4.0	-1.2
Contribution of group to the average offer rate	Asian	0.401	0.379	0.387	0.338	0.336	0.304
	Black	0.194	0.215	0.217	0.200	0.236	0.242
	Mixed	0.104	0.103	0.123	0.111	0.091	0.115
	White	0.734	0.713	0.708	0.680	0.667	0.651
	Other	0.084	0.077	0.135	0.060	0.061	0.068

### P.13 18 year old offer rate by ethnic group

Note: The line for a group is not plotted when that group made fewer than 10 applications in any of the years from 2012-2017.

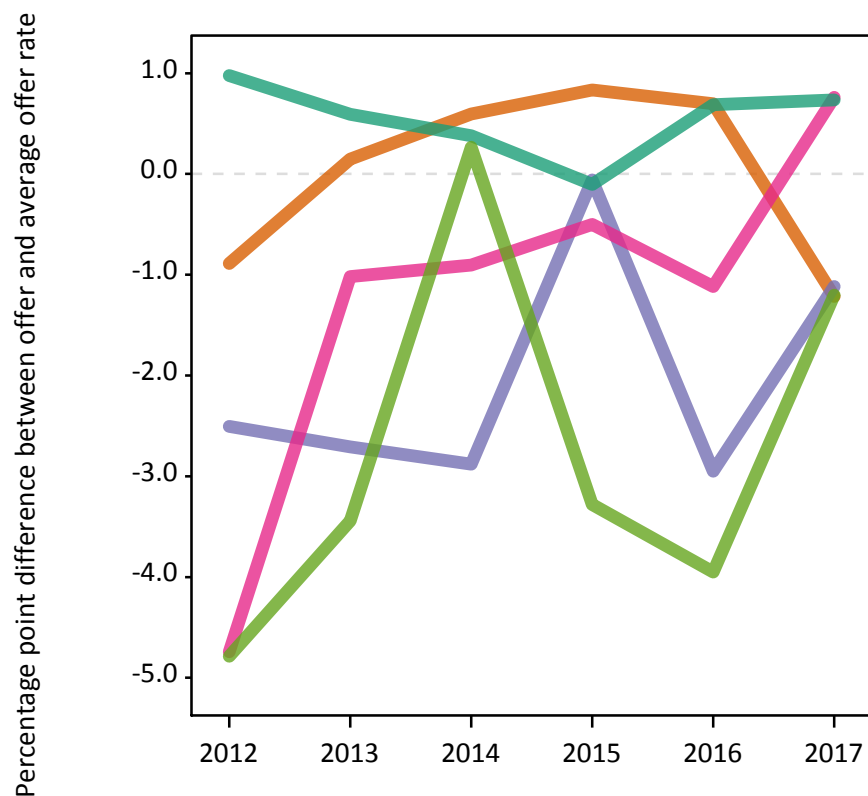
- Asian
- Black
- Mixed
- White
- Other



### P.14 Percentage point difference between 18 year old offer rate and average offer rate by ethnic group

Note: The line for a group is not plotted when that group made fewer than 50 applications in any of the years from 2012-2017.

- Asian
- Black
- Mixed
- White
- Other



### P.15 Applicants (all ages)

Statistic	2012	2013	2014	2015	2016	2017
June deadline applicants	19,785	19,290	19,335	21,715	22,815	22,420
Placed June deadline applicants	3,560	3,860	3,825	4,470	5,000	4,755
All placed applicants	4,385	4,600	4,955	5,780	6,205	6,005

### P.16 Applications (all ages)

Statistic	2012	2013	2014	2015	2016	2017
June deadline applications	21,735	21,000	20,775	23,325	24,485	24,005
Offers	13,630	14,980	15,055	17,150	17,490	17,980
Offer rate	62.7%	71.3%	72.5%	73.5%	71.4%	74.9%

### P.17 Applicants (all ages) by sex

Statistic	Sex	2012	2013	2014	2015	2016	2017
June deadline applicants	Men	7,815	7,610	7,670	8,860	9,475	9,500
	Women	11,975	11,680	11,670	12,855	13,340	12,925
Placed June deadline applicants	Men	1,410	1,585	1,625	1,930	2,225	2,120
	Women	2,150	2,275	2,200	2,540	2,780	2,635
All placed applicants	Men	1,760	1,915	2,160	2,560	2,805	2,735
	Women	2,625	2,685	2,795	3,225	3,400	3,270

### P.18 Applications (all ages) by sex

Statistic	Sex	2012	2013	2014	2015	2016	2017
June deadline applications	Men	8,650	8,370	8,250	9,625	10,240	10,255
	Women	13,085	12,630	12,525	13,700	14,250	13,750
Offers	Men	5,970	6,535	6,745	7,960	8,265	8,500
	Women	7,660	8,445	8,310	9,190	9,225	9,485
Offer rate	Men	69.0%	78.1%	81.7%	82.7%	80.7%	82.9%
	Women	58.6%	66.9%	66.3%	67.1%	64.7%	69.0%

### P.19 Applicants (all ages) by POLAR3 quintile

Statistic	POLAR3 quintile	2012	2013	2014	2015	2016	2017
June deadline applicants	Quintile 1	2,800	2,790	3,080	3,385	3,605	3,455
	Quintile 2	4,080	4,065	4,295	4,925	5,010	4,815
	Quintile 3	4,295	4,235	4,115	4,740	5,085	4,905
	Quintile 4	4,160	4,100	3,850	4,325	4,630	4,545
	Quintile 5	4,420	4,070	3,970	4,295	4,435	4,615
Placed June deadline applicants	Quintile 1	480	560	600	710	725	705
	Quintile 2	660	790	780	960	985	990
	Quintile 3	730	810	760	940	1,075	970
	Quintile 4	850	865	845	940	1,130	1,030
	Quintile 5	840	825	830	915	1,085	1,020
All placed applicants	Quintile 1	590	645	750	875	890	895
	Quintile 2	815	960	1,025	1,210	1,215	1,210
	Quintile 3	885	965	1,010	1,215	1,325	1,215
	Quintile 4	1,020	1,040	1,085	1,215	1,415	1,320
	Quintile 5	1,065	975	1,080	1,260	1,355	1,325

### P.20 Applications (all ages) by POLAR3 quintile

Statistic	POLAR3 quintile	2012	2013	2014	2015	2016	2017
June deadline applications	Quintile 1	3,140	3,055	3,320	3,610	3,885	3,670
	Quintile 2	4,405	4,395	4,575	5,270	5,335	5,145
	Quintile 3	4,605	4,550	4,360	5,005	5,420	5,200
	Quintile 4	4,630	4,520	4,185	4,700	4,990	4,925
	Quintile 5	4,920	4,445	4,300	4,690	4,805	4,960
Offers	Quintile 1	1,715	1,965	2,200	2,415	2,470	2,545
	Quintile 2	2,620	2,990	3,145	3,765	3,710	3,745
	Quintile 3	2,895	3,255	3,200	3,690	3,845	3,855
	Quintile 4	3,070	3,365	3,160	3,585	3,725	3,830
	Quintile 5	3,310	3,380	3,325	3,660	3,700	3,925
Offer rate	Quintile 1	54.7%	64.2%	66.3%	66.9%	63.6%	69.3%
	Quintile 2	59.5%	68.0%	68.8%	71.4%	69.6%	72.8%
	Quintile 3	62.8%	71.6%	73.4%	73.7%	71.0%	74.1%
	Quintile 4	66.4%	74.5%	75.5%	76.3%	74.6%	77.8%
	Quintile 5	67.2%	76.0%	77.3%	78.1%	77.0%	79.2%

## P.21 Applicants (all ages) by ethnic group

Statistic	Ethnic group	2012	2013	2014	2015	2016	2017
June deadline applicants	Asian	4,110	3,975	4,015	4,500	4,580	4,350
	Black	2,945	2,990	3,045	3,780	4,355	4,480
	Mixed	775	770	840	1,000	1,060	1,235
	White	11,605	11,195	11,090	11,980	12,295	11,790
	Other	240	240	245	300	360	405
Placed June deadline applicants	Asian	775	875	885	1,005	1,095	1,025
	Black	485	550	565	805	960	950
	Mixed	135	150	165	210	245	255
	White	2,110	2,215	2,140	2,365	2,610	2,410
	Other	35	40	45	55	60	85
All placed applicants	Asian	1,090	1,170	1,295	1,430	1,450	1,415
	Black	665	730	855	1,185	1,345	1,310
	Mixed	165	190	205	275	305	325
	White	2,380	2,420	2,505	2,770	2,975	2,785
	Other	55	55	65	80	85	120

## P.22 Applications (all ages) by ethnic group

Statistic	Ethnic group	2012	2013	2014	2015	2016	2017
June deadline applications	Asian	4,785	4,530	4,445	4,990	5,075	4,835
	Black	3,220	3,170	3,195	3,990	4,570	4,660
	Mixed	840	845	915	1,075	1,130	1,310
	White	12,500	12,080	11,840	12,765	13,135	12,595
	Other	270	255	260	330	400	430
Offers	Asian	3,305	3,590	3,575	4,040	3,935	3,810
	Black	1,635	1,855	1,990	2,595	2,795	3,055
	Mixed	495	570	650	775	805	995
	White	7,975	8,680	8,550	9,390	9,550	9,670
	Other	150	190	205	230	285	325
Offer rate	Asian	69.0%	79.3%	80.5%	80.9%	77.5%	78.9%
	Black	50.8%	58.5%	62.2%	65.0%	61.2%	65.6%
	Mixed	58.9%	67.7%	70.9%	72.0%	71.1%	75.8%
	White	63.8%	71.9%	72.2%	73.6%	72.7%	76.8%
	Other	55.6%	74.4%	77.9%	69.1%	71.3%	75.3%

## Technical Notes and Definitions

### UCAS undergraduate scheme

#### Adjustment

Adjustment allows applicants who have met and exceeded the terms of their conditional firm offer to seek and find a place at another provider whilst keeping their place at their original firm choice provider.

#### Clearing

Clearing is a route for applicants that are not placed and holding no offers to find a place on courses with vacancies.

#### Cycle year

The UCAS application cycle which runs from September to October the following year. For example the 2017 cycle runs from September 2016 through to October 2017.

#### End of cycle

The point in the cycle to which the numbers in this report refer, and the point at which the cycle is closed such that no more applications or offers can be made, and no more applicants can be placed. Numbers reported at the end of cycle exclude information on a small number of applicants who cancelled during the cycle.

#### Extra

Applicants who are unsuccessful in obtaining an offer or decline all offers may be eligible to apply through Extra, where they can apply to one further course at a time. Extra operates from 25 February until early July. It provides applicants who are eligible the possibility of obtaining an offer before exam results are published and Clearing starts.

#### June 30 deadline

The deadline for main scheme applications. Applicants who apply after this date will go directly into Clearing.

#### Record of Prior Acceptance (RPA)

RPA is an acceptance route used when a provider informs UCAS of applicants it has accepted outside of the normal application process (e.g. individuals who have applied directly to the provider).

### Reporting groups

#### Ethnic group

High level grouping of ethnic origin as declared by the applicant: 'White', 'Black', 'Asian', 'Mixed', 'Other', 'Unknown'. Applicants who declare themselves as 'Unknown' ethnic origin are not reported in these tables, but are included in the associated csv data file.

#### POLAR3 quintile

Developed by HEFCE, POLAR3 classifies small areas across the UK into five groups according to their level of young participation in Higher Education. Each of these groups represents around 20 per cent of young people and is ranked from Quintile 1 (areas with the lowest young participation rates, considered as the most disadvantaged) to Quintile 5 (highest young participation rates, considered most advantaged). POLAR3 is based on the participation rates of young people between 2005 and 2009 who entered Higher Education between 2005-06 and 2010-11, therefore is most suitable for applicants aged 19 and under. These groups are assigned using the postcode declared by the applicant at the time of their application. If a UK postcode is invalid, considered unsafe for measurement or there is no link to Census geography possible then the applicant is not assigned to a quintile. Applicants with no POLAR3 quintile are not reported.

#### Sex

Sex as declared by the applicant.

### **SIMD 2016 quintile**

Scottish index of multiple deprivation (SIMD) identifies small area concentrations of multiple deprivation across all of Scotland, providing a relative measure of deprivation amongst 6505 small areas (data zones) based on 7 socio-economic domains. These small areas are classified into five groups ranked from Quintile 1 (considered the most deprived) to Quintile 5 (considered least deprived), with equal populations in each quintile. Quintiles are assigned using the postcode declared by the applicant, applicants declaring invalid postcodes are classified as 'Not assigned' and are not reported.

SIMD is only defined for applicants domiciled in Scotland, therefore any applicants domiciled outside of Scotland cannot be assigned to an SIMD quintile and so are not reported for this measure.

SIMD is only reported for providers in Scotland. Application and entry rates by SIMD are reported in the 2017 End of Cycle Report and the 2017 cycle January deadline application rate report.

### **Statistics reported in the tables**

#### **All placed applicants**

The number of applicants placed for entry into higher education at the provider through one of their choices, including any choices made through Extra, or via Adjustment, Clearing or RPA.

#### **All placed applicants per 10,000 population**

The number of total UK domiciled 18 year old placed applicants for entry into higher education at the provider divided by the number of UK 18 year olds in the population, multiplied by 10,000. This gives the number of 18 year olds, for every 10,000 in the population, that were placed at the provider through one of their choices, including any choices made through Extra, or via Adjustment, Clearing or RPA. It is an alternative way of expressing the entry rate to a provider. By referencing the underlying population this statistic shows how the number of placed applicants is changing in relation to the available pool of potential applicants and so gives the chance that somebody from the group will be placed at a provider.

This statistic is only reported for 18 year olds.

#### **Average offer rate**

The offer rate that you might expect if the predicted grades and subject choice of applicants were the only factors that influenced whether an applicant was made an offer by the provider. The average offer rate is calculated by dividing applicants according to their specific combination of grades (for A levels the best three predicted grades are used, for BTECs, International Baccalaureate and Scottish Highers and Advanced Highers, predicted grades along with any grades already achieved upon applying are used) and subject choice. For each combination the number of main scheme offers is divided by the number of main scheme applications, to give an overall offer rate. This is then multiplied by the number of applications made by the group for which the average offer rate is being calculated (for example POLAR3 quintile 1), to give an average number of offers for that group. These average number of offers are then added together across all combinations of predicted grade and subject and divided by the number of main scheme applications from the group to give the average offer rate.

The average offer rate does not attempt to control for any other factors that may play a part in the decision to make an offer, such as the subject of the qualifications studied, their relevance to a course, or the grade in each subject; higher numbers of A levels being studied; the exact profile of grades predicted; personal statements; teacher references; interviews; or any other criteria (such as work experience or portfolios) that may be part of the admissions decision.

This statistic is only reported for 18 year olds.



### Contribution of group to the average offer rate

The way in which the average offer rate is defined means that the pattern of application and offers of a group (for example POLAR3 quintile 1) will always contribute, in part, to the average offer rate for that group. When this contribution is large, the average offer rate will mainly reflect the patterns for the group, meaning that the value of the average offer rate will be similar to the offer rate, the percentage point difference statistic will be small, and any real difference between the offer rate and what might be expected given the predicted grades and subject choices of the applicants will be difficult to detect.

Values of the contribution of group to the average offer rate range between 0 and 1. The closer the value is to 1 the greater the contribution a group makes to its own average offer rate.

This statistic is only reported for 18 year olds.

### Placed June deadline applicants

An applicant who has been placed for entry into higher education at the provider through a June deadline application.

### Placed June deadline applicants per 10,000 population

The number of UK domiciled 18 year old placed June deadline applicants at the provider divided by the number of UK 18 year olds in the population, multiplied by 10,000. This gives the number of 18 year olds, for every 10,000 in the population, that were placed at the provider through one of their June deadline applications. It is an alternative way of expressing the entry rate to a provider, but for placed June deadline applicants only. By referencing the underlying population this statistic shows how the number of placed June deadline applicants is changing in relation to the available pool of potential 18 year old applicants and so gives the chance that somebody from the group will be placed at a provider through a June deadline application.

This statistic is only reported for 18 year olds.

### June deadline applications

An application (or choice) to a course in higher education to the provider that is made by the June 30 deadline. Each applicant can make up to five choices this way. The number of June deadline applications does not include choices made through the following routes: Clearing, Extra, Adjustment and RPAs. Applications made to October deadline courses received after the October deadline are not included in these statistics.

### June deadline applicants

The number of applicants that made at least one application to the provider by the June 30 deadline.

### June deadline applicants per 10,000 population

The number of UK domiciled 18 year old June deadline applicants to the provider divided by the number of UK 18 year olds in the population, multiplied by 10,000. This gives the number of 18 year olds, for every 10,000 in the population, who applied by the June 30 deadline. It is equivalent to the application rate. By referencing the underlying population this statistic shows how the number of June deadline applicants is changing in relation to the available pool of potential 18 year old applicants and so gives the chance that somebody from the group will apply to a provider by the June 30 deadline.

This statistic is only reported for 18 year olds.

### Offers

An offer is defined as a provider's decision in response to an application to offer a place to an applicant, often subject to the applicant satisfying academic and/or other criteria, via a June deadline application (i.e. does not cover choices made through the following routes: Clearing, Extra, Adjustment and RPAs).

### Offer rate

The number of offers made divided by the number of June deadline applications. This gives the proportion of all June deadline applications to the provider that received an offer.

### Percentage point difference between offer rate and average offer rate

The offer rate minus the average offer rate.

The percentage point difference can be compared to the expected range of statistical variation resulting from the calculation of the average offer rate using the Average Offer Rate Lookup Table. Where the value of the percentage point difference lies outside of this range, the percentage point difference may be considered to represent a real difference between the offer rate and the average offer rate.

### Other definitions

#### Age

This analysis uses country-specific age definitions that align with the cut off points for school and college cohorts within the different administrations of the UK. For England and Wales, ages are defined on the 31 August, for Northern Ireland on the 1 July and for Scotland on the 28 February the following year. Defining ages in this way matches the assignment of children to school cohorts. For applicants outside of the UK a cohort cut off of 31 August has been used. Numbers for applicants aged 17 and under are included in the tables that report numbers for all age groups. Providers in Scotland typically receive a higher proportion of applicants aged 17 and under compared to providers elsewhere in the UK.

#### Provider

A higher education provider - a university or college.

#### UK domiciled

Declared area of permanent residence within England, Northern Ireland, Scotland and Wales. Applicants from the Channel Islands and Isle of Man are not included.