

## C99 University of Cumbria

**Cycle years:** 2012 - 2017

**Cycle Reference Point:** End of Cycle

**Applicant coverage:** UK domiciled

**Reporting groups:** Sex, POLAR3, ethnic group

**Applicant statistics:** June deadline applicants, placed June deadline applicants, all placed applicants, June deadline applicants per 10,000 population, placed June deadline applicants per 10,000 population, all placed applicants per 10,000 population

**Application statistics:** June deadline applications, offers, offer rate, average offer rate, percentage point difference between offer rate and average offer rate, contribution of group to the average offer rate

**Non-disclosure controls:** To avoid the disclosure of information about any individual the following measures are taken

- Applicants, placed applicants, applications and offers are rounded to the nearest 5.
- Applicants/placed applicants per 10,000 population figures are reported as 0 if the applicant/placed applicant figures are rounded to 0.
- All statistics related to the offer rate are not reported when the number of applications for a group is less than 10. The percentage point difference between the offer rate and the average offer rate is not reported when the number of applications for a group is less than 50.
- Offer rates are reported as 0% if there are fewer than 5 offers, and 100% if the number of offers is within 5 of the number of applications. When the offer rate is reported as 0% or 100%, it is reported in italics.

### Contents:

18 year old applicants:	P.1
18 year old applications:	P.2
18 year old applicants by sex:	P.3
18 year old applications by sex:	P.4
18 year old applicants by POLAR3 quintile:	P.7
18 year old applications by POLAR3 quintile:	P.8
18 year old applicants by ethnic group:	P.11
18 year old applications by ethnic group:	P.12
Applicants (all ages):	P.15
Applications (all ages):	P.16
Applicants (all ages) by sex:	P.17
Applications (all ages) by sex:	P.18
Applicants (all ages) by POLAR3 quintile:	P.19
Applications (all ages) by POLAR3 quintile:	P.20
Applicants (all ages) by ethnic group:	P.21
Applications (all ages) by ethnic group:	P.22

## P.1 18 year old applicants

Statistic	2012	2013	2014	2015	2016	2017
June deadline applicants	3,550	3,355	3,545	3,315	2,925	2,720
Placed June deadline applicants	735	660	655	570	510	490
All placed applicants	920	790	790	715	620	590
June deadline applicants per 10,000 population	45.9	44.1	47.0	43.3	39.0	36.7
Placed June deadline applicants per 10,000	9.5	8.7	8.7	7.4	6.8	6.6
All placed applicants per 10,000 population	11.9	10.4	10.5	9.3	8.3	8.0

## P.2 18 year old applications

Statistic	2012	2013	2014	2015	2016	2017
June deadline applications	3,830	3,620	3,795	3,545	3,185	2,965
Offers	2,595	2,800	3,110	2,980	2,610	2,455
Offer rate	67.8%	77.3%	82.0%	84.1%	81.9%	82.9%

### P.3 18 year old applicants by sex

Statistic	Sex	2012	2013	2014	2015	2016	2017
June deadline applicants	Men	1,095	995	1,000	970	880	725
	Women	2,460	2,360	2,545	2,345	2,045	1,995
Placed June deadline applicants	Men	220	210	175	160	150	115
	Women	520	450	480	410	360	375
All placed applicants	Men	270	255	210	200	180	145
	Women	650	535	580	515	440	445
June deadline applicants per 10,000 population	Men	27.6	25.5	25.8	24.7	22.9	19.1
	Women	65.2	63.7	69.5	62.8	56.0	55.2
Placed June deadline applicants per 10,000 population	Men	5.5	5.4	4.5	4.1	3.9	3.0
	Women	13.8	12.2	13.1	10.9	9.9	10.3
All placed applicants per 10,000 population	Men	6.8	6.5	5.4	5.1	4.7	3.8
	Women	17.3	14.4	15.8	13.8	12.0	12.4

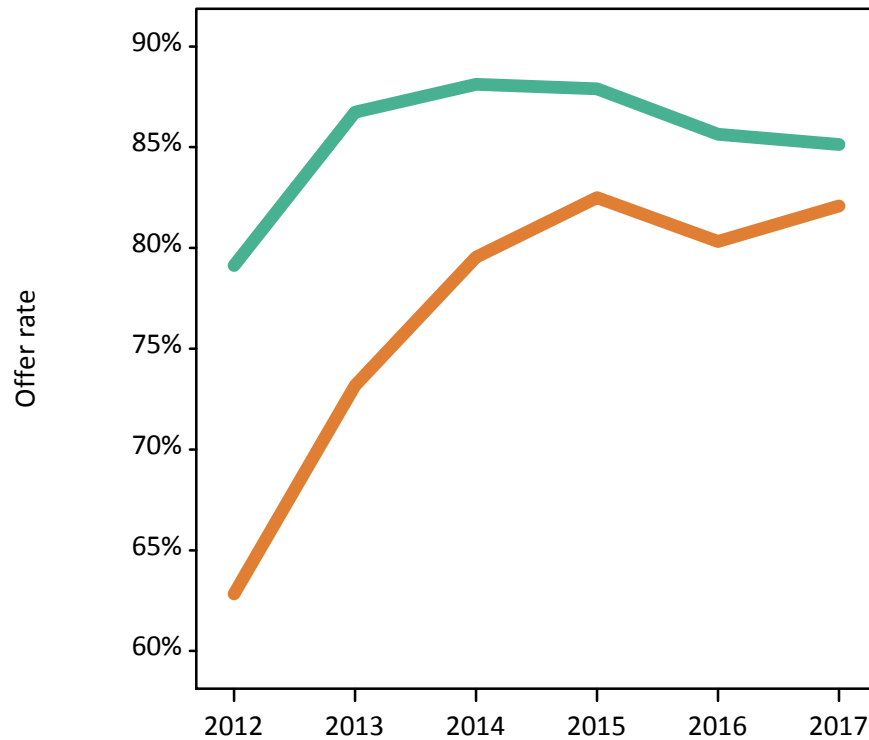
### P.4 18 year old applications by sex

Statistic	Sex	2012	2013	2014	2015	2016	2017
June deadline applications	Men	1,175	1,095	1,085	1,050	970	785
	Women	2,655	2,530	2,705	2,495	2,215	2,175
Offers	Men	930	950	955	920	830	670
	Women	1,670	1,850	2,155	2,060	1,780	1,785
Offer rate	Men	79.1%	86.7%	88.1%	87.9%	85.6%	85.1%
	Women	62.8%	73.2%	79.5%	82.5%	80.3%	82.1%
Average offer rate	Men	78.3%	85.9%	88.0%	88.5%	85.3%	85.4%
	Women	63.2%	73.5%	79.6%	82.2%	80.5%	82.0%
Percentage point difference between offer rate and average offer rate	Men	0.8	0.8	0.2	-0.7	0.4	-0.2
	Women	-0.4	-0.4	-0.1	0.3	-0.2	0.1
Contribution of group to the average offer rate	Men	0.529	0.550	0.536	0.552	0.558	0.527
	Women	0.792	0.806	0.814	0.812	0.807	0.829

### P.5 18 year old offer rate by sex

Note: The line for a group is not plotted when that group made fewer than 10 applications in any of the years from 2012-2017.

Men  
Women



### P.6 Percentage point difference between 18 year old offer rate and average offer rate by sex

Note: The line for a group is not plotted when that group made fewer than 50 applications in any of the years from 2012-2017.

Men  
Women



## P.7 18 year old applicants by POLAR3 quintile

Statistic	POLAR3 quintile	2012	2013	2014	2015	2016	2017
June deadline applicants	Quintile 1	620	600	665	595	545	525
	Quintile 2	655	610	655	630	535	470
	Quintile 3	735	695	765	720	630	610
	Quintile 4	795	775	775	745	625	605
	Quintile 5	750	670	680	620	590	510
Placed June deadline applicants	Quintile 1	125	145	135	90	110	110
	Quintile 2	130	140	135	100	90	85
	Quintile 3	155	120	135	135	110	110
	Quintile 4	170	125	120	130	110	105
	Quintile 5	160	130	130	110	90	80
All placed applicants	Quintile 1	150	165	155	105	125	130
	Quintile 2	160	160	160	130	105	95
	Quintile 3	190	140	170	165	140	120
	Quintile 4	215	165	150	165	145	125
	Quintile 5	200	160	155	150	110	110
June deadline applicants per 10,000 population	Quintile 1	43.4	42.9	47.8	42.6	40.4	39.5
	Quintile 2	43.8	41.5	44.6	42.3	36.9	33.0
	Quintile 3	47.5	45.7	50.9	46.8	41.8	40.8
	Quintile 4	50.0	49.7	50.2	47.6	40.5	39.5
	Quintile 5	44.5	40.5	41.8	37.2	35.6	31.1
Placed June deadline applicants per 10,000 population	Quintile 1	8.8	10.5	9.6	6.4	8.2	8.3
	Quintile 2	8.7	9.4	9.4	6.9	6.1	5.8
	Quintile 3	10.0	7.8	8.8	8.8	7.3	7.3
	Quintile 4	10.6	8.1	7.9	8.3	7.2	6.8
	Quintile 5	9.5	7.8	8.0	6.7	5.4	5.0
All placed applicants per 10,000 population	Quintile 1	10.4	11.9	11.1	7.6	9.1	9.9
	Quintile 2	10.7	10.8	11.0	8.7	7.3	6.8
	Quintile 3	12.4	9.2	11.3	10.7	9.2	8.2
	Quintile 4	13.7	10.5	9.6	10.6	9.3	8.2
	Quintile 5	12.0	9.6	9.5	8.8	6.6	6.8

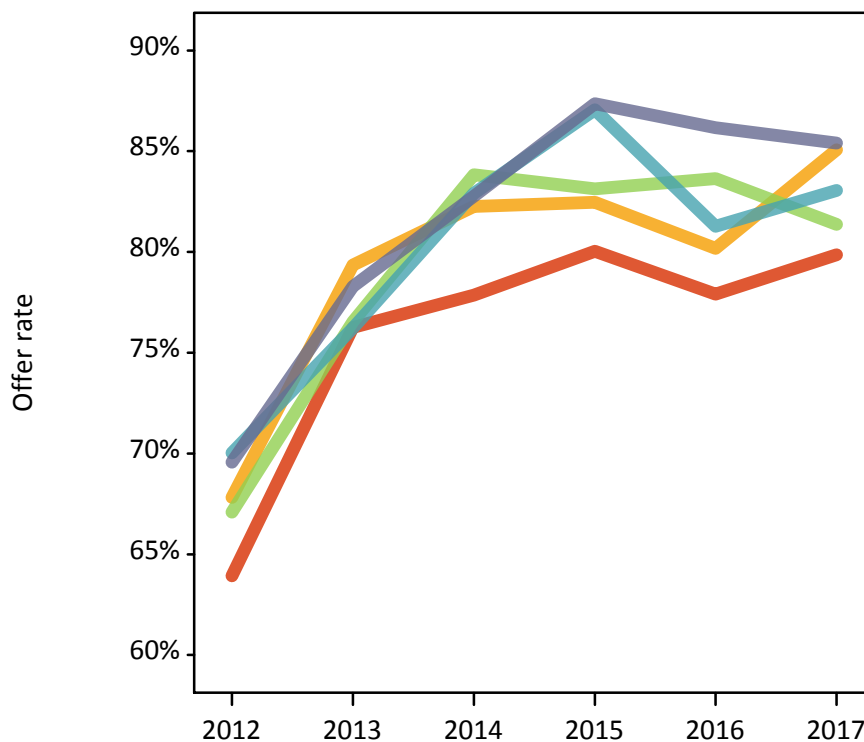
## P.8 18 year old applications by POLAR3 quintile

Statistic	POLAR3 quintile	2012	2013	2014	2015	2016	2017
June deadline applications	Quintile 1	670	660	720	635	595	570
	Quintile 2	695	645	695	675	575	530
	Quintile 3	795	750	810	760	690	655
	Quintile 4	860	835	830	805	690	650
	Quintile 5	805	725	735	670	630	555
Offers	Quintile 1	425	505	560	510	460	455
	Quintile 2	470	510	570	555	460	450
	Quintile 3	535	575	680	630	580	535
	Quintile 4	605	640	690	700	560	540
	Quintile 5	560	565	610	585	540	475
Offer rate	Quintile 1	63.9%	76.2%	77.9%	80.0%	77.9%	79.9%
	Quintile 2	67.8%	79.3%	82.3%	82.5%	80.2%	85.1%
	Quintile 3	67.1%	76.5%	83.8%	83.1%	83.6%	81.4%
	Quintile 4	70.0%	76.2%	82.9%	87.0%	81.3%	83.1%
	Quintile 5	69.6%	78.3%	82.8%	87.4%	86.2%	85.4%
Average offer rate	Quintile 1	66.3%	78.2%	81.7%	82.2%	79.3%	80.9%
	Quintile 2	67.3%	77.7%	81.2%	84.3%	81.1%	83.7%
	Quintile 3	66.5%	76.8%	82.2%	83.1%	83.0%	82.5%
	Quintile 4	69.6%	76.5%	82.6%	85.4%	82.1%	82.5%
	Quintile 5	69.1%	77.3%	82.1%	85.4%	83.8%	85.0%
Percentage point difference between offer rate and average offer rate	Quintile 1	-2.4	-1.9	-3.8	-2.2	-1.4	-1.1
	Quintile 2	0.5	1.6	1.0	-1.9	-0.9	1.4
	Quintile 3	0.6	-0.3	1.6	-0.0	0.7	-1.1
	Quintile 4	0.4	-0.3	0.3	1.6	-0.8	0.5
	Quintile 5	0.4	1.0	0.6	2.0	2.3	0.4
Contribution of group to the average offer rate	Quintile 1	0.287	0.292	0.283	0.286	0.323	0.326
	Quintile 2	0.266	0.284	0.281	0.295	0.298	0.326
	Quintile 3	0.302	0.312	0.301	0.313	0.326	0.352
	Quintile 4	0.329	0.342	0.322	0.326	0.340	0.353
	Quintile 5	0.309	0.327	0.318	0.326	0.347	0.352

### P.9 18 year old offer rate by POLAR3 quintile

Note: The line for a group is not plotted when that group made fewer than 10 applications in any of the years from 2012-2017.

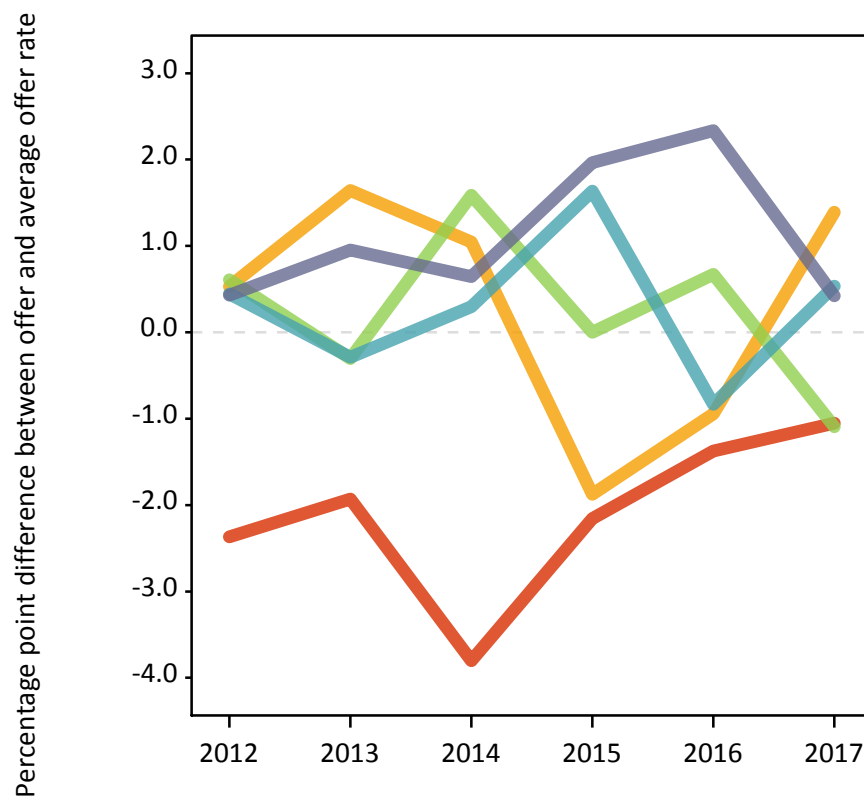
- Quintile 1
- Quintile 2
- Quintile 3
- Quintile 4
- Quintile 5



### P.10 Percentage point difference between 18 year old offer rate and average offer rate by POLAR3 quintile

Note: The line for a group is not plotted when that group made fewer than 50 applications in any of the years from 2012-2017.

- Quintile 1
- Quintile 2
- Quintile 3
- Quintile 4
- Quintile 5



## P.11 18 year old applicants by ethnic group

Statistic	Ethnic group	2012	2013	2014	2015	2016	2017
June deadline applicants	Asian	145	195	190	235	215	220
	Black	45	50	80	85	60	50
	Mixed	65	60	55	70	55	65
	White	3,280	3,040	3,200	2,895	2,580	2,370
	Other	10	5	15	15	10	5
Placed June deadline applicants	Asian	30	20	25	45	30	25
	Black	5	5	5	5	5	5
	Mixed	10	15	10	10	5	5
	White	690	625	610	505	470	450
	Other	0	0	0	0	0	0
All placed applicants	Asian	45	30	45	65	45	45
	Black	15	10	15	10	5	5
	Mixed	15	15	10	10	10	5
	White	840	725	715	620	555	525
	Other	0	0	0	5	0	0
June deadline applicants per 10,000 population	Asian	22.2	29.4	27.9	33.3	29.7	29.8
	Black	16.7	17.5	26.1	26.7	19.5	15.3
	Mixed	24.6	22.6	18.8	23.0	17.5	20.2
	White	50.8	48.3	51.9	46.5	42.6	39.9
	Other	13.6	4.4	14.0	17.6	10.0	5.8
Placed June deadline applicants per 10,000 population	Asian	4.5	3.2	4.0	6.4	3.9	3.7
	Black	2.1	1.3	2.3	1.6	1.3	1.3
	Mixed	3.8	4.8	2.8	2.6	2.2	1.2
	White	10.7	9.9	9.9	8.1	7.8	7.6
	Other	0.0	0.0	0.0	0.0	0.0	0.0
All placed applicants per 10,000 population	Asian	6.6	4.5	6.6	9.3	6.1	6.0
	Black	4.6	3.0	4.3	2.8	1.6	1.6
	Mixed	5.0	5.9	2.8	3.2	3.2	1.6
	White	13.0	11.5	11.6	10.0	9.2	8.8
	Other	0.0	0.0	0.0	3.1	0.0	0.0



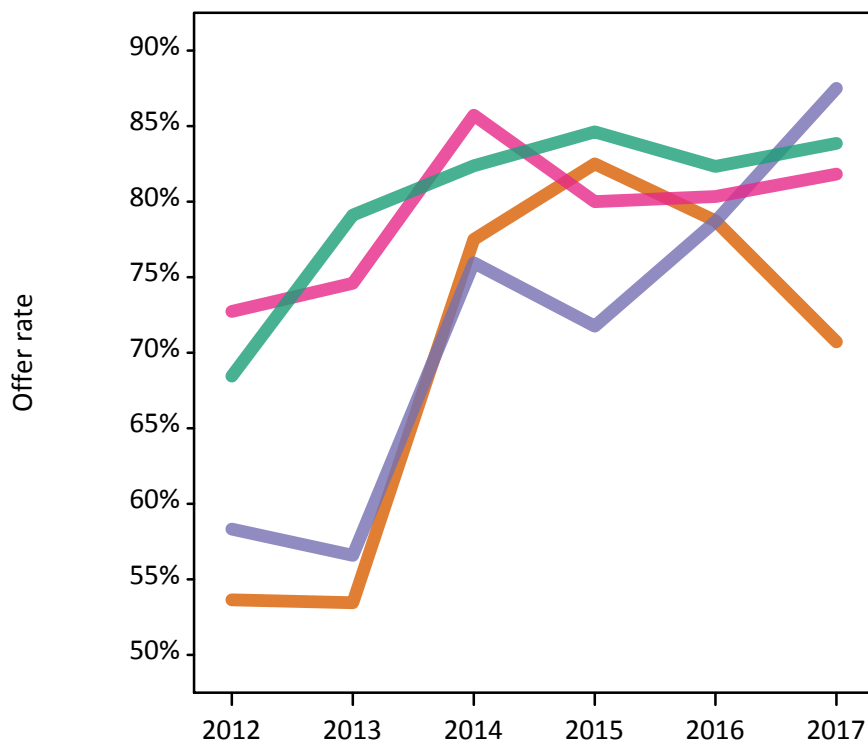
## P.12 18 year old applications by ethnic group

Statistic	Ethnic group	2012	2013	2014	2015	2016	2017
June deadline applications	Asian	150	200	190	240	220	220
	Black	50	55	80	85	60	50
	Mixed	65	65	55	75	60	65
	White	3,545	3,295	3,450	3,120	2,820	2,605
	Other	10	5	15	15	10	5
Offers	Asian	80	110	150	200	175	155
	Black	30	30	60	60	50	40
	Mixed	50	45	50	60	50	55
	White	2,425	2,605	2,840	2,640	2,325	2,185
	Other	10	0	10	15	5	5
Offer rate	Asian	53.6%	53.5%	77.5%	82.5%	78.7%	70.7%
	Black	58.3%	56.6%	75.9%	71.8%	78.7%	87.5%
	Mixed	72.7%	74.6%	85.7%	80.0%	80.3%	81.8%
	White	68.4%	79.1%	82.4%	84.6%	82.3%	83.9%
	Other	100.0%	N/A	61.5%	100.0%	100.0%	N/A
Average offer rate	Asian	61.3%	66.0%	75.3%	83.6%	80.0%	75.1%
	Black	71.5%	70.3%	83.8%	79.2%	79.9%	91.2%
	Mixed	72.1%	76.8%	83.9%	83.1%	81.9%	85.5%
	White	67.9%	78.1%	82.3%	84.3%	82.1%	83.4%
	Other	69.7%	N/A	80.4%	90.0%	75.9%	N/A
Percentage point difference between offer rate and average offer rate	Asian	-7.7	-12.6	2.2	-1.1	-1.3	-4.4
	Black	N/A	-13.7	-7.8	-7.5	-1.3	N/A
	Mixed	0.6	-2.2	1.9	-3.1	-1.6	-3.7
	White	0.5	1.1	0.1	0.3	0.2	0.5
	Other	N/A	N/A	N/A	N/A	N/A	N/A
Contribution of group to the average offer rate	Asian	0.154	0.181	0.181	0.216	0.227	0.294
	Black	0.133	0.162	0.125	0.140	0.226	0.139
	Mixed	0.170	0.182	0.125	0.156	0.205	0.198
	White	0.936	0.922	0.921	0.898	0.908	0.905
	Other	0.172	N/A	0.140	0.141	0.239	N/A

### P.13 18 year old offer rate by ethnic group

Note: The line for a group is not plotted when that group made fewer than 10 applications in any of the years from 2012-2017.

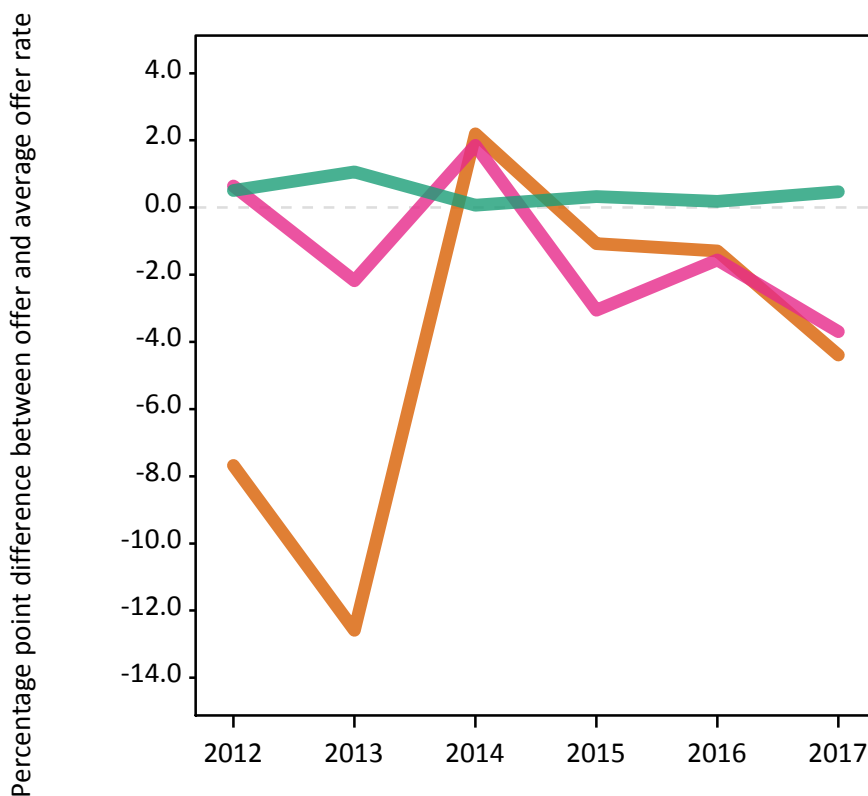
- Asian
- Black
- Mixed
- White
- Other



### P.14 Percentage point difference between 18 year old offer rate and average offer rate by ethnic group

Note: The line for a group is not plotted when that group made fewer than 50 applications in any of the years from 2012-2017.

- Asian
- Black
- Mixed
- White
- Other



### P.15 Applicants (all ages)

Statistic	2012	2013	2014	2015	2016	2017
June deadline applicants	6,905	6,920	7,200	6,725	6,350	5,595
Placed June deadline applicants	1,520	1,515	1,515	1,380	1,270	1,160
All placed applicants	1,915	1,885	1,850	1,730	1,585	1,460

### P.16 Applications (all ages)

Statistic	2012	2013	2014	2015	2016	2017
June deadline applications	7,560	7,550	7,840	7,285	6,935	6,130
Offers	4,435	5,365	5,930	5,695	5,125	4,635
Offer rate	58.7%	71.1%	75.6%	78.2%	73.9%	75.6%

### P.17 Applicants (all ages) by sex

Statistic	Sex	2012	2013	2014	2015	2016	2017
June deadline applicants	Men	2,230	2,130	2,150	1,995	1,860	1,615
	Women	4,675	4,790	5,050	4,730	4,490	3,980
Placed June deadline applicants	Men	485	515	455	420	390	325
	Women	1,030	1,000	1,060	960	880	835
All placed applicants	Men	625	650	560	530	480	410
	Women	1,290	1,235	1,290	1,200	1,105	1,055

### P.18 Applications (all ages) by sex

Statistic	Sex	2012	2013	2014	2015	2016	2017
June deadline applications	Men	2,420	2,350	2,365	2,175	2,040	1,785
	Women	5,135	5,200	5,475	5,110	4,895	4,345
Offers	Men	1,695	1,855	1,920	1,780	1,600	1,330
	Women	2,740	3,510	4,010	3,915	3,520	3,305
Offer rate	Men	70.0%	79.0%	81.3%	81.7%	78.5%	74.5%
	Women	53.3%	67.5%	73.2%	76.6%	71.9%	76.1%

### P.19 Applicants (all ages) by POLAR3 quintile

Statistic	POLAR3 quintile	2012	2013	2014	2015	2016	2017
June deadline applicants	Quintile 1	1,350	1,315	1,455	1,305	1,255	1,130
	Quintile 2	1,300	1,305	1,330	1,265	1,165	995
	Quintile 3	1,375	1,390	1,540	1,420	1,345	1,190
	Quintile 4	1,470	1,565	1,520	1,440	1,355	1,250
	Quintile 5	1,405	1,330	1,340	1,280	1,215	1,025
Placed June deadline applicants	Quintile 1	295	330	340	265	275	270
	Quintile 2	285	310	305	235	230	215
	Quintile 3	290	270	290	275	270	235
	Quintile 4	335	325	285	310	275	235
	Quintile 5	315	275	295	290	215	205
All placed applicants	Quintile 1	360	405	405	320	330	335
	Quintile 2	355	370	370	305	275	270
	Quintile 3	365	340	375	345	350	285
	Quintile 4	425	405	345	400	360	290
	Quintile 5	405	360	355	360	265	275

### P.20 Applications (all ages) by POLAR3 quintile

Statistic	POLAR3 quintile	2012	2013	2014	2015	2016	2017
June deadline applications	Quintile 1	1,485	1,455	1,605	1,415	1,380	1,250
	Quintile 2	1,410	1,410	1,440	1,355	1,260	1,105
	Quintile 3	1,500	1,505	1,660	1,520	1,485	1,285
	Quintile 4	1,620	1,720	1,650	1,570	1,485	1,350
	Quintile 5	1,535	1,445	1,465	1,410	1,315	1,125
Offers	Quintile 1	795	1,030	1,150	1,050	980	935
	Quintile 2	810	1,015	1,100	1,055	920	850
	Quintile 3	895	1,045	1,260	1,170	1,105	950
	Quintile 4	980	1,220	1,255	1,270	1,105	1,015
	Quintile 5	945	1,045	1,155	1,135	1,000	880
Offer rate	Quintile 1	53.5%	70.8%	71.7%	74.3%	71.1%	74.9%
	Quintile 2	57.4%	71.7%	76.1%	77.9%	72.9%	76.6%
	Quintile 3	59.7%	69.5%	75.9%	77.0%	74.5%	73.7%
	Quintile 4	60.6%	71.1%	76.0%	80.9%	74.4%	74.9%
	Quintile 5	61.7%	72.3%	78.9%	80.5%	76.3%	78.2%

## P.21 Applicants (all ages) by ethnic group

Statistic	Ethnic group	2012	2013	2014	2015	2016	2017
June deadline applicants	Asian	355	425	405	505	460	460
	Black	270	215	255	275	255	190
	Mixed	135	140	155	140	150	125
	White	6,090	6,085	6,320	5,725	5,415	4,760
	Other	35	35	40	50	35	25
Placed June deadline applicants	Asian	60	55	60	105	75	50
	Black	25	15	40	40	25	15
	Mixed	25	35	30	20	30	10
	White	1,400	1,405	1,375	1,205	1,135	1,075
	Other	5	5	5	5	5	0
All placed applicants	Asian	80	75	85	135	115	80
	Black	50	35	70	60	45	30
	Mixed	35	45	30	25	35	15
	White	1,695	1,635	1,590	1,425	1,325	1,250
	Other	5	10	15	10	15	5

## P.22 Applications (all ages) by ethnic group

Statistic	Ethnic group	2012	2013	2014	2015	2016	2017
June deadline applications	Asian	380	450	425	520	480	470
	Black	280	220	265	290	265	195
	Mixed	135	145	160	145	160	130
	White	6,700	6,675	6,925	6,245	5,960	5,275
	Other	35	35	40	50	40	25
Offers	Asian	165	225	290	395	340	320
	Black	90	90	165	170	145	135
	Mixed	85	100	115	105	110	95
	White	4,060	4,920	5,310	4,970	4,475	4,035
	Other	20	15	25	35	30	15
Offer rate	Asian	43.8%	50.1%	68.6%	76.1%	71.0%	68.6%
	Black	31.7%	40.0%	62.0%	58.7%	55.5%	69.7%
	Mixed	61.8%	67.8%	73.6%	72.6%	69.1%	70.5%
	White	60.6%	73.8%	76.7%	79.6%	75.1%	76.5%
	Other	55.6%	44.4%	63.4%	71.4%	68.3%	70.8%

## Technical Notes and Definitions

### UCAS undergraduate scheme

#### Adjustment

Adjustment allows applicants who have met and exceeded the terms of their conditional firm offer to seek and find a place at another provider whilst keeping their place at their original firm choice provider.

#### Clearing

Clearing is a route for applicants that are not placed and holding no offers to find a place on courses with vacancies.

#### Cycle year

The UCAS application cycle which runs from September to October the following year. For example the 2017 cycle runs from September 2016 through to October 2017.

#### End of cycle

The point in the cycle to which the numbers in this report refer, and the point at which the cycle is closed such that no more applications or offers can be made, and no more applicants can be placed. Numbers reported at the end of cycle exclude information on a small number of applicants who cancelled during the cycle.

#### Extra

Applicants who are unsuccessful in obtaining an offer or decline all offers may be eligible to apply through Extra, where they can apply to one further course at a time. Extra operates from 25 February until early July. It provides applicants who are eligible the possibility of obtaining an offer before exam results are published and Clearing starts.

#### June 30 deadline

The deadline for main scheme applications. Applicants who apply after this date will go directly into Clearing.

#### Record of Prior Acceptance (RPA)

RPA is an acceptance route used when a provider informs UCAS of applicants it has accepted outside of the normal application process (e.g. individuals who have applied directly to the provider).

### Reporting groups

#### Ethnic group

High level grouping of ethnic origin as declared by the applicant: 'White', 'Black', 'Asian', 'Mixed', 'Other', 'Unknown'. Applicants who declare themselves as 'Unknown' ethnic origin are not reported in these tables, but are included in the associated csv data file.

#### POLAR3 quintile

Developed by HEFCE, POLAR3 classifies small areas across the UK into five groups according to their level of young participation in Higher Education. Each of these groups represents around 20 per cent of young people and is ranked from Quintile 1 (areas with the lowest young participation rates, considered as the most disadvantaged) to Quintile 5 (highest young participation rates, considered most advantaged). POLAR3 is based on the participation rates of young people between 2005 and 2009 who entered Higher Education between 2005-06 and 2010-11, therefore is most suitable for applicants aged 19 and under. These groups are assigned using the postcode declared by the applicant at the time of their application. If a UK postcode is invalid, considered unsafe for measurement or there is no link to Census geography possible then the applicant is not assigned to a quintile. Applicants with no POLAR3 quintile are not reported.

#### Sex

Sex as declared by the applicant.

### SIMD 2016 quintile

Scottish index of multiple deprivation (SIMD) identifies small area concentrations of multiple deprivation across all of Scotland, providing a relative measure of deprivation amongst 6505 small areas (data zones) based on 7 socio-economic domains. These small areas are classified into five groups ranked from Quintile 1 (considered the most deprived) to Quintile 5 (considered least deprived), with equal populations in each quintile. Quintiles are assigned using the postcode declared by the applicant, applicants declaring invalid postcodes are classified as 'Not assigned' and are not reported.

SIMD is only defined for applicants domiciled in Scotland, therefore any applicants domiciled outside of Scotland cannot be assigned to an SIMD quintile and so are not reported for this measure.

SIMD is only reported for providers in Scotland. Application and entry rates by SIMD are reported in the 2017 End of Cycle Report and the 2017 cycle January deadline application rate report.

### Statistics reported in the tables

#### All placed applicants

The number of applicants placed for entry into higher education at the provider through one of their choices, including any choices made through Extra, or via Adjustment, Clearing or RPA.

#### All placed applicants per 10,000 population

The number of total UK domiciled 18 year old placed applicants for entry into higher education at the provider divided by the number of UK 18 year olds in the population, multiplied by 10,000. This gives the number of 18 year olds, for every 10,000 in the population, that were placed at the provider through one of their choices, including any choices made through Extra, or via Adjustment, Clearing or RPA. It is an alternative way of expressing the entry rate to a provider. By referencing the underlying population this statistic shows how the number of placed applicants is changing in relation to the available pool of potential applicants and so gives the chance that somebody from the group will be placed at a provider.

This statistic is only reported for 18 year olds.

#### Average offer rate

The offer rate that you might expect if the predicted grades and subject choice of applicants were the only factors that influenced whether an applicant was made an offer by the provider. The average offer rate is calculated by dividing applicants according to their specific combination of grades (for A levels the best three predicted grades are used, for BTECs, International Baccalaureate and Scottish Highers and Advanced Highers, predicted grades along with any grades already achieved upon applying are used) and subject choice. For each combination the number of main scheme offers is divided by the number of main scheme applications, to give an overall offer rate. This is then multiplied by the number of applications made by the group for which the average offer rate is being calculated (for example POLAR3 quintile 1), to give an average number of offers for that group. These average number of offers are then added together across all combinations of predicted grade and subject and divided by the number of main scheme applications from the group to give the average offer rate.

The average offer rate does not attempt to control for any other factors that may play a part in the decision to make an offer, such as the subject of the qualifications studied, their relevance to a course, or the grade in each subject; higher numbers of A levels being studied; the exact profile of grades predicted; personal statements; teacher references; interviews; or any other criteria (such as work experience or portfolios) that may be part of the admissions decision.

This statistic is only reported for 18 year olds.



### Contribution of group to the average offer rate

The way in which the average offer rate is defined means that the pattern of application and offers of a group (for example POLAR3 quintile 1) will always contribute, in part, to the average offer rate for that group. When this contribution is large, the average offer rate will mainly reflect the patterns for the group, meaning that the value of the average offer rate will be similar to the offer rate, the percentage point difference statistic will be small, and any real difference between the offer rate and what might be expected given the predicted grades and subject choices of the applicants will be difficult to detect.

Values of the contribution of group to the average offer rate range between 0 and 1. The closer the value is to 1 the greater the contribution a group makes to its own average offer rate.

This statistic is only reported for 18 year olds.

### Placed June deadline applicants

An applicant who has been placed for entry into higher education at the provider through a June deadline application.

### Placed June deadline applicants per 10,000 population

The number of UK domiciled 18 year old placed June deadline applicants at the provider divided by the number of UK 18 year olds in the population, multiplied by 10,000. This gives the number of 18 year olds, for every 10,000 in the population, that were placed at the provider through one of their June deadline applications. It is an alternative way of expressing the entry rate to a provider, but for placed June deadline applicants only. By referencing the underlying population this statistic shows how the number of placed June deadline applicants is changing in relation to the available pool of potential 18 year old applicants and so gives the chance that somebody from the group will be placed at a provider through a June deadline application.

This statistic is only reported for 18 year olds.

### June deadline applications

An application (or choice) to a course in higher education to the provider that is made by the June 30 deadline. Each applicant can make up to five choices this way. The number of June deadline applications does not include choices made through the following routes: Clearing, Extra, Adjustment and RPAs. Applications made to October deadline courses received after the October deadline are not included in these statistics.

### June deadline applicants

The number of applicants that made at least one application to the provider by the June 30 deadline.

### June deadline applicants per 10,000 population

The number of UK domiciled 18 year old June deadline applicants to the provider divided by the number of UK 18 year olds in the population, multiplied by 10,000. This gives the number of 18 year olds, for every 10,000 in the population, who applied by the June 30 deadline. It is equivalent to the application rate. By referencing the underlying population this statistic shows how the number of June deadline applicants is changing in relation to the available pool of potential 18 year old applicants and so gives the chance that somebody from the group will apply to a provider by the June 30 deadline.

This statistic is only reported for 18 year olds.

### Offers

An offer is defined as a provider's decision in response to an application to offer a place to an applicant, often subject to the applicant satisfying academic and/or other criteria, via a June deadline application (i.e. does not cover choices made through the following routes: Clearing, Extra, Adjustment and RPAs).

### Offer rate

The number of offers made divided by the number of June deadline applications. This gives the proportion of all June deadline applications to the provider that received an offer.

### Percentage point difference between offer rate and average offer rate

The offer rate minus the average offer rate.

The percentage point difference can be compared to the expected range of statistical variation resulting from the calculation of the average offer rate using the Average Offer Rate Lookup Table. Where the value of the percentage point difference lies outside of this range, the percentage point difference may be considered to represent a real difference between the offer rate and the average offer rate.

### Other definitions

#### Age

This analysis uses country-specific age definitions that align with the cut off points for school and college cohorts within the different administrations of the UK. For England and Wales, ages are defined on the 31 August, for Northern Ireland on the 1 July and for Scotland on the 28 February the following year. Defining ages in this way matches the assignment of children to school cohorts. For applicants outside of the UK a cohort cut off of 31 August has been used. Numbers for applicants aged 17 and under are included in the tables that report numbers for all age groups. Providers in Scotland typically receive a higher proportion of applicants aged 17 and under compared to providers elsewhere in the UK.

#### Provider

A higher education provider - a university or college.

#### UK domiciled

Declared area of permanent residence within England, Northern Ireland, Scotland and Wales. Applicants from the Channel Islands and Isle of Man are not included.