

C58 University of Chichester

Cycle years: 2012 - 2017

Cycle Reference Point: End of Cycle

Applicant coverage: UK domiciled

Reporting groups: Sex, POLAR3, ethnic group

Applicant statistics: June deadline applicants, placed June deadline applicants, all placed applicants, June deadline applicants per 10,000 population, placed June deadline applicants per 10,000 population, all placed applicants per 10,000 population

Application statistics: June deadline applications, offers, offer rate, average offer rate, percentage point difference between offer rate and average offer rate, contribution of group to the average offer rate

Non-disclosure controls: To avoid the disclosure of information about any individual the following measures are taken

- Applicants, placed applicants, applications and offers are rounded to the nearest 5.
- Applicants/placed applicants per 10,000 population figures are reported as 0 if the applicant/placed applicant figures are rounded to 0.
- All statistics related to the offer rate are not reported when the number of applications for a group is less than 10. The percentage point difference between the offer rate and the average offer rate is not reported when the number of applications for a group is less than 50.
- Offer rates are reported as 0% if there are fewer than 5 offers, and 100% if the number of offers is within 5 of the number of applications. When the offer rate is reported as 0% or 100%, it is reported in italics.

Contents:

- 18 year old applicants: P.1
- 18 year old applications: P.2
- 18 year old applicants by sex: P.3
- 18 year old applications by sex: P.4
- 18 year old applicants by POLAR3 quintile: P.7
- 18 year old applications by POLAR3 quintile: P.8
- 18 year old applicants by ethnic group: P.11
- 18 year old applications by ethnic group: P.12
- Applicants (all ages): P.15
- Applications (all ages): P.16
- Applicants (all ages) by sex: P.17
- Applications (all ages) by sex: P.18
- Applicants (all ages) by POLAR3 quintile: P.19
- Applications (all ages) by POLAR3 quintile: P.20
- Applicants (all ages) by ethnic group: P.21
- Applications (all ages) by ethnic group: P.22

P.1 18 year old applicants

Statistic	2012	2013	2014	2015	2016	2017
June deadline applicants	3,965	4,190	3,905	4,100	4,150	3,500
Placed June deadline applicants	890	805	790	805	860	690
All placed applicants	960	865	865	865	925	750
June deadline applicants per 10,000 population	51.3	55.0	51.8	53.5	55.4	47.2
Placed June deadline applicants per 10,000	11.5	10.6	10.5	10.5	11.4	9.3
All placed applicants per 10,000 population	12.4	11.4	11.5	11.3	12.3	10.1

P.2 18 year old applications

Statistic	2012	2013	2014	2015	2016	2017
June deadline applications	4,160	4,380	4,120	4,320	4,390	3,740
Offers	3,290	3,320	2,950	3,035	3,420	2,830
Offer rate	79.1%	75.9%	71.6%	70.3%	77.9%	75.7%

P.3 18 year old applicants by sex

Statistic	Sex	2012	2013	2014	2015	2016	2017
June deadline applicants	Men	1,400	1,445	1,420	1,340	1,435	1,260
	Women	2,570	2,740	2,485	2,765	2,715	2,235
Placed June deadline applicants	Men	340	315	275	285	300	245
	Women	550	490	515	520	560	445
All placed applicants	Men	370	340	310	310	330	270
	Women	590	525	555	555	595	480
June deadline applicants per 10,000 population	Men	35.3	37.0	36.6	34.1	37.4	33.2
	Women	68.1	74.0	67.9	73.9	74.2	61.9
Placed June deadline applicants per 10,000 population	Men	8.6	8.0	7.1	7.3	7.8	6.5
	Women	14.6	13.3	14.0	13.9	15.3	12.3
All placed applicants per 10,000 population	Men	9.3	8.7	8.0	7.9	8.5	7.1
	Women	15.6	14.1	15.2	14.9	16.3	13.2

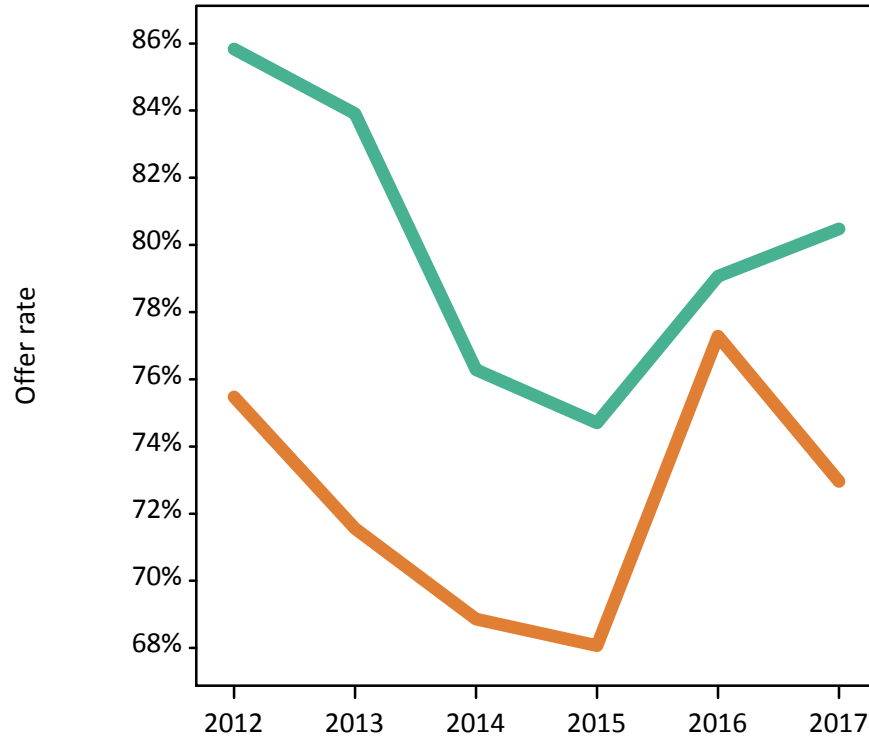
P.4 18 year old applications by sex

Statistic	Sex	2012	2013	2014	2015	2016	2017
June deadline applications	Men	1,475	1,525	1,515	1,425	1,550	1,375
	Women	2,685	2,855	2,610	2,895	2,840	2,365
Offers	Men	1,265	1,280	1,155	1,065	1,225	1,105
	Women	2,025	2,045	1,795	1,970	2,195	1,725
Offer rate	Men	85.8%	83.9%	76.3%	74.7%	79.1%	80.5%
	Women	75.5%	71.6%	68.9%	68.1%	77.3%	73.0%
Average offer rate	Men	86.1%	83.9%	77.9%	74.9%	80.9%	80.3%
	Women	75.3%	71.5%	67.9%	68.0%	76.3%	73.1%
Percentage point difference between offer rate and average offer rate	Men	-0.2	-0.0	-1.6	-0.2	-1.8	0.2
	Women	0.1	0.0	0.9	0.1	1.0	-0.1
Contribution of group to the average offer rate	Men	0.537	0.537	0.563	0.529	0.544	0.564
	Women	0.746	0.753	0.746	0.768	0.751	0.747

P.5 18 year old offer rate by sex

Note: The line for a group is not plotted when that group made fewer than 10 applications in any of the years from 2012-2017.

Men
Women



P.6 Percentage point difference between 18 year old offer rate and average offer rate by sex

Note: The line for a group is not plotted when that group made fewer than 50 applications in any of the years from 2012-2017.

Men
Women



P.7 18 year old applicants by POLAR3 quintile

Statistic	POLAR3 quintile	2012	2013	2014	2015	2016	2017
June deadline applicants	Quintile 1	510	535	550	585	615	490
	Quintile 2	665	785	755	735	720	610
	Quintile 3	840	840	805	865	835	700
	Quintile 4	970	1,040	910	955	1,000	865
	Quintile 5	985	985	880	955	970	825
Placed June deadline applicants	Quintile 1	110	115	135	110	130	120
	Quintile 2	145	160	150	130	140	130
	Quintile 3	195	150	160	185	180	150
	Quintile 4	210	195	200	190	215	165
	Quintile 5	225	180	145	185	190	125
All placed applicants	Quintile 1	115	125	140	120	140	130
	Quintile 2	155	175	160	145	150	140
	Quintile 3	215	165	180	195	195	160
	Quintile 4	230	210	215	200	230	175
	Quintile 5	245	190	170	205	205	145
June deadline applicants per 10,000 population	Quintile 1	35.7	38.2	39.7	41.9	45.6	37.0
	Quintile 2	44.2	53.3	51.5	49.4	49.7	43.0
	Quintile 3	54.4	55.1	53.4	56.3	55.5	46.9
	Quintile 4	61.1	66.6	59.0	61.0	64.9	56.6
	Quintile 5	58.5	59.5	54.0	57.1	58.6	50.3
Placed June deadline applicants per 10,000 population	Quintile 1	7.7	8.4	9.6	8.0	9.8	8.9
	Quintile 2	9.6	10.9	10.3	8.9	9.8	9.2
	Quintile 3	12.7	10.0	10.7	12.0	12.0	10.0
	Quintile 4	13.3	12.6	12.8	12.1	13.9	10.7
	Quintile 5	13.5	10.8	8.8	11.1	11.4	7.7
All placed applicants per 10,000 population	Quintile 1	8.0	8.9	10.0	8.6	10.4	9.6
	Quintile 2	10.4	11.7	10.8	9.8	10.4	9.9
	Quintile 3	13.8	10.9	12.0	12.6	12.8	10.8
	Quintile 4	14.4	13.4	14.1	12.8	15.0	11.3
	Quintile 5	14.6	11.6	10.5	12.2	12.5	8.8

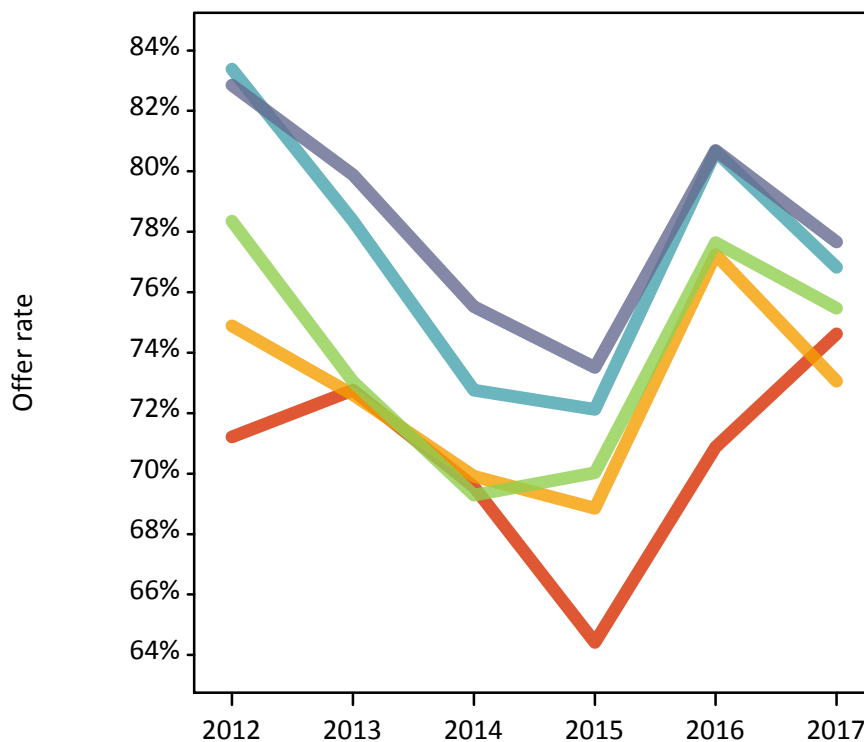
P.8 18 year old applications by POLAR3 quintile

Statistic	POLAR3 quintile	2012	2013	2014	2015	2016	2017
June deadline applications	Quintile 1	540	570	600	620	665	535
	Quintile 2	695	830	790	775	765	670
	Quintile 3	895	870	855	910	880	750
	Quintile 4	1,010	1,085	960	1,020	1,060	915
	Quintile 5	1,010	1,020	910	990	1,005	865
Offers	Quintile 1	385	415	415	400	470	400
	Quintile 2	520	600	555	535	590	490
	Quintile 3	700	635	590	640	685	565
	Quintile 4	845	850	700	735	855	705
	Quintile 5	835	815	690	725	810	670
Offer rate	Quintile 1	71.2%	72.8%	69.6%	64.4%	70.9%	74.6%
	Quintile 2	74.9%	72.6%	69.9%	68.9%	77.3%	73.1%
	Quintile 3	78.3%	73.1%	69.3%	70.0%	77.6%	75.5%
	Quintile 4	83.4%	78.4%	72.8%	72.1%	80.7%	76.8%
	Quintile 5	82.9%	79.9%	75.5%	73.5%	80.7%	77.7%
Average offer rate	Quintile 1	75.7%	71.6%	70.5%	66.2%	74.0%	74.3%
	Quintile 2	76.1%	74.1%	69.3%	69.1%	77.7%	73.5%
	Quintile 3	79.0%	74.8%	71.5%	70.5%	77.5%	75.4%
	Quintile 4	81.5%	77.0%	71.3%	71.6%	79.0%	76.9%
	Quintile 5	80.8%	79.2%	74.9%	72.3%	80.2%	77.5%
Percentage point difference between offer rate and average offer rate	Quintile 1	-4.5	1.1	-1.0	-1.8	-3.1	0.4
	Quintile 2	-1.2	-1.4	0.6	-0.2	-0.5	-0.5
	Quintile 3	-0.7	-1.8	-2.2	-0.4	0.2	0.1
	Quintile 4	1.9	1.3	1.4	0.5	1.7	-0.1
	Quintile 5	2.0	0.6	0.6	1.2	0.5	0.2
Contribution of group to the average offer rate	Quintile 1	0.211	0.227	0.227	0.229	0.239	0.249
	Quintile 2	0.249	0.269	0.264	0.254	0.254	0.265
	Quintile 3	0.291	0.262	0.274	0.277	0.278	0.292
	Quintile 4	0.308	0.311	0.299	0.304	0.315	0.326
	Quintile 5	0.310	0.313	0.304	0.312	0.319	0.317

P.9 18 year old offer rate by POLAR3 quintile

Note: The line for a group is not plotted when that group made fewer than 10 applications in any of the years from 2012-2017.

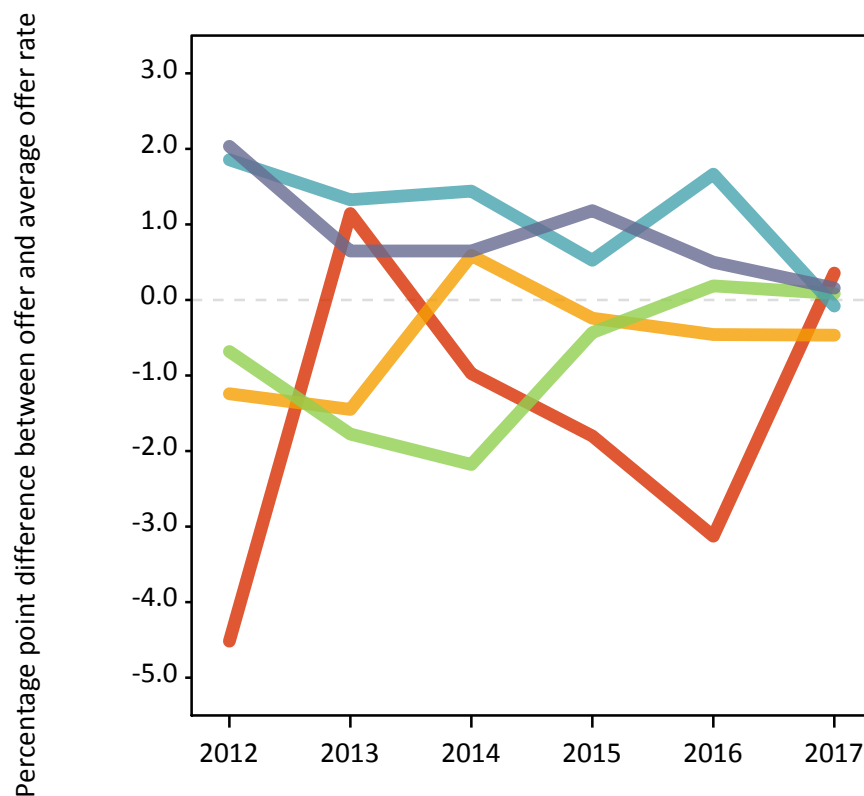
- Quintile 1
- Quintile 2
- Quintile 3
- Quintile 4
- Quintile 5



P.10 Percentage point difference between 18 year old offer rate and average offer rate by POLAR3 quintile

Note: The line for a group is not plotted when that group made fewer than 50 applications in any of the years from 2012-2017.

- Quintile 1
- Quintile 2
- Quintile 3
- Quintile 4
- Quintile 5



P.11 18 year old applicants by ethnic group

Statistic	Ethnic group	2012	2013	2014	2015	2016	2017
June deadline applicants	Asian	75	75	75	75	85	60
	Black	80	120	105	100	95	70
	Mixed	120	120	120	140	155	115
	White	3,660	3,850	3,575	3,755	3,795	3,235
	Other	20	15	20	15	20	15
Placed June deadline applicants	Asian	15	5	10	15	5	10
	Black	10	15	15	10	15	10
	Mixed	25	20	20	30	25	20
	White	835	760	740	750	810	650
	Other	5	0	0	0	5	5
All placed applicants	Asian	20	10	15	20	5	10
	Black	15	20	20	15	15	10
	Mixed	25	20	25	30	30	20
	White	895	810	805	800	865	700
	Other	5	0	0	0	5	5
June deadline applicants per 10,000 population	Asian	11.4	11.7	11.4	10.9	11.5	8.2
	Black	28.4	40.1	35.0	32.0	29.7	21.9
	Mixed	46.1	44.8	42.4	45.7	48.6	36.4
	White	56.7	61.2	57.9	60.3	62.7	54.5
	Other	24.9	15.4	19.3	16.6	18.1	12.6
Placed June deadline applicants per 10,000 population	Asian	2.2	1.1	1.8	1.8	0.7	1.2
	Black	3.9	5.1	4.3	3.5	4.5	2.5
	Mixed	8.8	8.1	7.0	9.1	7.9	5.6
	White	12.9	12.1	12.0	12.0	13.4	11.0
	Other	5.7	0.0	0.0	0.0	4.0	2.9
All placed applicants per 10,000 population	Asian	2.8	1.8	2.2	2.5	1.0	1.6
	Black	5.3	6.7	5.9	5.0	5.1	3.8
	Mixed	9.2	8.1	9.0	9.4	9.5	6.2
	White	13.8	12.8	13.1	12.8	14.3	11.8
	Other	6.8	0.0	0.0	0.0	4.0	2.9

P.12 18 year old applications by ethnic group

Statistic	Ethnic group	2012	2013	2014	2015	2016	2017
June deadline applications	Asian	75	80	80	80	90	60
	Black	80	125	110	105	95	75
	Mixed	120	125	125	150	160	125
	White	3,845	4,030	3,775	3,960	4,020	3,460
	Other	25	15	20	15	20	15
Offers	Asian	65	60	55	60	75	50
	Black	70	95	70	60	60	55
	Mixed	100	90	90	105	110	95
	White	3,035	3,055	2,715	2,795	3,150	2,615
	Other	20	10	15	10	15	10
Offer rate	Asian	85.5%	76.9%	70.4%	74.7%	83.0%	80.3%
	Black	86.4%	76.4%	61.6%	57.0%	65.6%	76.7%
	Mixed	80.3%	73.6%	71.4%	71.8%	70.9%	75.0%
	White	78.9%	75.8%	71.9%	70.6%	78.3%	75.6%
	Other	75.0%	100.0%	65.0%	50.0%	100.0%	100.0%
Average offer rate	Asian	84.5%	80.3%	78.1%	75.8%	83.5%	83.7%
	Black	86.5%	76.6%	68.3%	66.5%	76.2%	78.5%
	Mixed	82.8%	75.5%	71.3%	70.0%	72.4%	74.1%
	White	78.7%	75.7%	71.5%	70.3%	78.0%	75.6%
	Other	84.9%	86.0%	71.9%	67.9%	75.6%	72.9%
Percentage point difference between offer rate and average offer rate	Asian	1.0	-3.4	-7.7	-1.1	-0.6	-3.3
	Black	-0.1	-0.2	-6.7	-9.5	-10.6	-1.8
	Mixed	-2.5	-1.9	0.2	1.8	-1.5	0.9
	White	0.2	0.1	0.4	0.4	0.2	0.1
	Other	N/A	N/A	N/A	N/A	N/A	N/A
Contribution of group to the average offer rate	Asian	0.146	0.152	0.148	0.123	0.172	0.196
	Black	0.140	0.153	0.121	0.119	0.149	0.130
	Mixed	0.111	0.114	0.112	0.126	0.127	0.133
	White	0.934	0.931	0.925	0.925	0.927	0.935
	Other	0.143	0.058	0.144	0.065	0.111	0.233

P.13 18 year old offer rate by ethnic group

Note: The line for a group is not plotted when that group made fewer than 10 applications in any of the years from 2012-2017.

- Asian
- Black
- Mixed
- White
- Other



P.14 Percentage point difference between 18 year old offer rate and average offer rate by ethnic group

Note: The line for a group is not plotted when that group made fewer than 50 applications in any of the years from 2012-2017.

- Asian
- Black
- Mixed
- White
- Other



P.15 Applicants (all ages)

Statistic	2012	2013	2014	2015	2016	2017
June deadline applicants	6,195	6,595	6,385	6,520	6,505	5,605
Placed June deadline applicants	1,410	1,340	1,380	1,380	1,410	1,235
All placed applicants	1,535	1,480	1,540	1,515	1,570	1,385

P.16 Applications (all ages)

Statistic	2012	2013	2014	2015	2016	2017
June deadline applications	6,595	6,980	6,860	6,975	6,965	6,040
Offers	4,785	4,945	4,580	4,650	5,115	4,350
Offer rate	72.5%	70.8%	66.7%	66.7%	73.4%	72.0%

P.17 Applicants (all ages) by sex

Statistic	Sex	2012	2013	2014	2015	2016	2017
June deadline applicants	Men	2,340	2,465	2,465	2,355	2,380	2,090
	Women	3,855	4,135	3,925	4,170	4,125	3,520
Placed June deadline applicants	Men	575	540	535	530	530	455
	Women	835	795	845	845	875	780
All placed applicants	Men	630	600	600	595	590	520
	Women	905	880	940	915	980	865

P.18 Applications (all ages) by sex

Statistic	Sex	2012	2013	2014	2015	2016	2017
June deadline applications	Men	2,500	2,620	2,655	2,550	2,580	2,280
	Women	4,095	4,360	4,205	4,425	4,385	3,760
Offers	Men	1,990	2,025	1,900	1,780	1,940	1,750
	Women	2,795	2,920	2,680	2,870	3,175	2,600
Offer rate	Men	79.5%	77.3%	71.6%	69.8%	75.1%	76.7%
	Women	68.3%	66.9%	63.7%	64.9%	72.5%	69.2%

P.19 Applicants (all ages) by POLAR3 quintile

Statistic	POLAR3 quintile	2012	2013	2014	2015	2016	2017
June deadline applicants	Quintile 1	965	980	1,000	1,025	1,020	880
	Quintile 2	1,105	1,245	1,250	1,245	1,150	1,025
	Quintile 3	1,280	1,315	1,320	1,380	1,370	1,150
	Quintile 4	1,470	1,585	1,450	1,485	1,555	1,330
	Quintile 5	1,370	1,460	1,355	1,385	1,390	1,205
Placed June deadline applicants	Quintile 1	195	230	245	230	240	225
	Quintile 2	265	260	290	255	240	245
	Quintile 3	305	255	290	305	310	270
	Quintile 4	335	315	310	325	330	280
	Quintile 5	310	280	240	265	285	215
All placed applicants	Quintile 1	205	250	265	245	265	255
	Quintile 2	290	285	310	280	270	270
	Quintile 3	325	290	330	330	350	305
	Quintile 4	370	345	345	355	360	305
	Quintile 5	340	305	290	300	320	250

P.20 Applications (all ages) by POLAR3 quintile

Statistic	POLAR3 quintile	2012	2013	2014	2015	2016	2017
June deadline applications	Quintile 1	1,055	1,050	1,115	1,115	1,125	965
	Quintile 2	1,180	1,340	1,350	1,345	1,235	1,125
	Quintile 3	1,385	1,385	1,420	1,475	1,470	1,240
	Quintile 4	1,555	1,680	1,540	1,595	1,650	1,420
	Quintile 5	1,415	1,515	1,420	1,440	1,455	1,270
Offers	Quintile 1	650	690	720	690	755	670
	Quintile 2	820	900	870	860	910	795
	Quintile 3	1,020	975	920	990	1,065	900
	Quintile 4	1,175	1,235	1,055	1,105	1,245	1,040
	Quintile 5	1,120	1,140	1,005	1,000	1,130	945
Offer rate	Quintile 1	61.5%	65.7%	64.6%	61.8%	67.0%	69.2%
	Quintile 2	69.5%	67.3%	64.2%	64.1%	73.4%	70.6%
	Quintile 3	73.6%	70.3%	64.9%	67.1%	72.4%	72.6%
	Quintile 4	75.7%	73.3%	68.5%	69.4%	75.5%	73.0%
	Quintile 5	79.0%	75.3%	70.9%	69.6%	77.5%	74.2%

P.21 Applicants (all ages) by ethnic group

Statistic	Ethnic group	2012	2013	2014	2015	2016	2017
June deadline applicants	Asian	155	150	155	135	145	130
	Black	200	235	250	250	235	155
	Mixed	195	225	210	235	240	200
	White	5,600	5,935	5,725	5,845	5,835	5,075
	Other	35	30	40	35	30	35
Placed June deadline applicants	Asian	25	15	20	25	15	15
	Black	25	30	35	30	35	25
	Mixed	45	45	35	45	40	30
	White	1,305	1,245	1,280	1,270	1,305	1,155
	Other	10	5	5	5	5	10
All placed applicants	Asian	35	25	30	30	20	20
	Black	35	40	50	50	45	30
	Mixed	45	45	45	50	45	35
	White	1,410	1,360	1,410	1,370	1,445	1,285
	Other	10	10	5	10	5	10

P.22 Applications (all ages) by ethnic group

Statistic	Ethnic group	2012	2013	2014	2015	2016	2017
June deadline applications	Asian	160	155	170	140	155	135
	Black	205	245	260	255	245	165
	Mixed	205	235	220	245	250	215
	White	5,975	6,295	6,160	6,270	6,260	5,475
	Other	40	30	45	40	30	35
Offers	Asian	125	115	110	100	115	100
	Black	140	165	140	130	145	100
	Mixed	155	165	145	160	170	150
	White	4,335	4,455	4,145	4,225	4,640	3,960
	Other	25	25	30	20	25	30
Offer rate	Asian	78.1%	74.4%	66.1%	71.8%	74.4%	73.3%
	Black	69.0%	67.9%	54.3%	50.6%	59.3%	60.4%
	Mixed	74.8%	70.6%	65.6%	66.0%	67.3%	69.5%
	White	72.5%	70.8%	67.3%	67.4%	74.2%	72.4%
	Other	68.4%	83.9%	65.1%	56.4%	75.0%	78.4%

Technical Notes and Definitions

UCAS undergraduate scheme

Adjustment

Adjustment allows applicants who have met and exceeded the terms of their conditional firm offer to seek and find a place at another provider whilst keeping their place at their original firm choice provider.

Clearing

Clearing is a route for applicants that are not placed and holding no offers to find a place on courses with vacancies.

Cycle year

The UCAS application cycle which runs from September to October the following year. For example the 2017 cycle runs from September 2016 through to October 2017.

End of cycle

The point in the cycle to which the numbers in this report refer, and the point at which the cycle is closed such that no more applications or offers can be made, and no more applicants can be placed. Numbers reported at the end of cycle exclude information on a small number of applicants who cancelled during the cycle.

Extra

Applicants who are unsuccessful in obtaining an offer or decline all offers may be eligible to apply through Extra, where they can apply to one further course at a time. Extra operates from 25 February until early July. It provides applicants who are eligible the possibility of obtaining an offer before exam results are published and Clearing starts.

June 30 deadline

The deadline for main scheme applications. Applicants who apply after this date will go directly into Clearing.

Record of Prior Acceptance (RPA)

RPA is an acceptance route used when a provider informs UCAS of applicants it has accepted outside of the normal application process (e.g. individuals who have applied directly to the provider).

Reporting groups

Ethnic group

High level grouping of ethnic origin as declared by the applicant: 'White', 'Black', 'Asian', 'Mixed', 'Other', 'Unknown'. Applicants who declare themselves as 'Unknown' ethnic origin are not reported in these tables, but are included in the associated csv data file.

POLAR3 quintile

Developed by HEFCE, POLAR3 classifies small areas across the UK into five groups according to their level of young participation in Higher Education. Each of these groups represents around 20 per cent of young people and is ranked from Quintile 1 (areas with the lowest young participation rates, considered as the most disadvantaged) to Quintile 5 (highest young participation rates, considered most advantaged). POLAR3 is based on the participation rates of young people between 2005 and 2009 who entered Higher Education between 2005-06 and 2010-11, therefore is most suitable for applicants aged 19 and under. These groups are assigned using the postcode declared by the applicant at the time of their application. If a UK postcode is invalid, considered unsafe for measurement or there is no link to Census geography possible then the applicant is not assigned to a quintile. Applicants with no POLAR3 quintile are not reported.

Sex

Sex as declared by the applicant.

SIMD 2016 quintile

Scottish index of multiple deprivation (SIMD) identifies small area concentrations of multiple deprivation across all of Scotland, providing a relative measure of deprivation amongst 6505 small areas (data zones) based on 7 socio-economic domains. These small areas are classified into five groups ranked from Quintile 1 (considered the most deprived) to Quintile 5 (considered least deprived), with equal populations in each quintile. Quintiles are assigned using the postcode declared by the applicant, applicants declaring invalid postcodes are classified as 'Not assigned' and are not reported.

SIMD is only defined for applicants domiciled in Scotland, therefore any applicants domiciled outside of Scotland cannot be assigned to an SIMD quintile and so are not reported for this measure.

SIMD is only reported for providers in Scotland. Application and entry rates by SIMD are reported in the 2017 End of Cycle Report and the 2017 cycle January deadline application rate report.

Statistics reported in the tables

All placed applicants

The number of applicants placed for entry into higher education at the provider through one of their choices, including any choices made through Extra, or via Adjustment, Clearing or RPA.

All placed applicants per 10,000 population

The number of total UK domiciled 18 year old placed applicants for entry into higher education at the provider divided by the number of UK 18 year olds in the population, multiplied by 10,000. This gives the number of 18 year olds, for every 10,000 in the population, that were placed at the provider through one of their choices, including any choices made through Extra, or via Adjustment, Clearing or RPA. It is an alternative way of expressing the entry rate to a provider. By referencing the underlying population this statistic shows how the number of placed applicants is changing in relation to the available pool of potential applicants and so gives the chance that somebody from the group will be placed at a provider.

This statistic is only reported for 18 year olds.

Average offer rate

The offer rate that you might expect if the predicted grades and subject choice of applicants were the only factors that influenced whether an applicant was made an offer by the provider. The average offer rate is calculated by dividing applicants according to their specific combination of grades (for A levels the best three predicted grades are used, for BTECs, International Baccalaureate and Scottish Highers and Advanced Highers, predicted grades along with any grades already achieved upon applying are used) and subject choice. For each combination the number of main scheme offers is divided by the number of main scheme applications, to give an overall offer rate. This is then multiplied by the number of applications made by the group for which the average offer rate is being calculated (for example POLAR3 quintile 1), to give an average number of offers for that group. These average number of offers are then added together across all combinations of predicted grade and subject and divided by the number of main scheme applications from the group to give the average offer rate.

The average offer rate does not attempt to control for any other factors that may play a part in the decision to make an offer, such as the subject of the qualifications studied, their relevance to a course, or the grade in each subject; higher numbers of A levels being studied; the exact profile of grades predicted; personal statements; teacher references; interviews; or any other criteria (such as work experience or portfolios) that may be part of the admissions decision.

This statistic is only reported for 18 year olds.

Contribution of group to the average offer rate

The way in which the average offer rate is defined means that the pattern of application and offers of a group (for example POLAR3 quintile 1) will always contribute, in part, to the average offer rate for that group. When this contribution is large, the average offer rate will mainly reflect the patterns for the group, meaning that the value of the average offer rate will be similar to the offer rate, the percentage point difference statistic will be small, and any real difference between the offer rate and what might be expected given the predicted grades and subject choices of the applicants will be difficult to detect.

Values of the contribution of group to the average offer rate range between 0 and 1. The closer the value is to 1 the greater the contribution a group makes to its own average offer rate.

This statistic is only reported for 18 year olds.

Placed June deadline applicants

An applicant who has been placed for entry into higher education at the provider through a June deadline application.

Placed June deadline applicants per 10,000 population

The number of UK domiciled 18 year old placed June deadline applicants at the provider divided by the number of UK 18 year olds in the population, multiplied by 10,000. This gives the number of 18 year olds, for every 10,000 in the population, that were placed at the provider through one of their June deadline applications. It is an alternative way of expressing the entry rate to a provider, but for placed June deadline applicants only. By referencing the underlying population this statistic shows how the number of placed June deadline applicants is changing in relation to the available pool of potential 18 year old applicants and so gives the chance that somebody from the group will be placed at a provider through a June deadline application.

This statistic is only reported for 18 year olds.

June deadline applications

An application (or choice) to a course in higher education to the provider that is made by the June 30 deadline. Each applicant can make up to five choices this way. The number of June deadline applications does not include choices made through the following routes: Clearing, Extra, Adjustment and RPAs. Applications made to October deadline courses received after the October deadline are not included in these statistics.

June deadline applicants

The number of applicants that made at least one application to the provider by the June 30 deadline.

June deadline applicants per 10,000 population

The number of UK domiciled 18 year old June deadline applicants to the provider divided by the number of UK 18 year olds in the population, multiplied by 10,000. This gives the number of 18 year olds, for every 10,000 in the population, who applied by the June 30 deadline. It is equivalent to the application rate. By referencing the underlying population this statistic shows how the number of June deadline applicants is changing in relation to the available pool of potential 18 year old applicants and so gives the chance that somebody from the group will apply to a provider by the June 30 deadline.

This statistic is only reported for 18 year olds.

Offers

An offer is defined as a provider's decision in response to an application to offer a place to an applicant, often subject to the applicant satisfying academic and/or other criteria, via a June deadline application (i.e. does not cover choices made through the following routes: Clearing, Extra, Adjustment and RPAs).

Offer rate

The number of offers made divided by the number of June deadline applications. This gives the proportion of all June deadline applications to the provider that received an offer.

Percentage point difference between offer rate and average offer rate

The offer rate minus the average offer rate.

The percentage point difference can be compared to the expected range of statistical variation resulting from the calculation of the average offer rate using the Average Offer Rate Lookup Table. Where the value of the percentage point difference lies outside of this range, the percentage point difference may be considered to represent a real difference between the offer rate and the average offer rate.

Other definitions

Age

This analysis uses country-specific age definitions that align with the cut off points for school and college cohorts within the different administrations of the UK. For England and Wales, ages are defined on the 31 August, for Northern Ireland on the 1 July and for Scotland on the 28 February the following year. Defining ages in this way matches the assignment of children to school cohorts. For applicants outside of the UK a cohort cut off of 31 August has been used. Numbers for applicants aged 17 and under are included in the tables that report numbers for all age groups. Providers in Scotland typically receive a higher proportion of applicants aged 17 and under compared to providers elsewhere in the UK.

Provider

A higher education provider - a university or college.

UK domiciled

Declared area of permanent residence within England, Northern Ireland, Scotland and Wales. Applicants from the Channel Islands and Isle of Man are not included.