

B84 Brunel University London

Cycle years: 2012 - 2017

Cycle Reference Point: End of Cycle

Applicant coverage: UK domiciled

Reporting groups: Sex, POLAR3, ethnic group

Applicant statistics: June deadline applicants, placed June deadline applicants, all placed applicants, June deadline applicants per 10,000 population, placed June deadline applicants per 10,000 population, all placed applicants per 10,000 population

Application statistics: June deadline applications, offers, offer rate, average offer rate, percentage point difference between offer rate and average offer rate, contribution of group to the average offer rate

Non-disclosure controls: To avoid the disclosure of information about any individual the following measures are taken

- Applicants, placed applicants, applications and offers are rounded to the nearest 5.
- Applicants/placed applicants per 10,000 population figures are reported as 0 if the applicant/placed applicant figures are rounded to 0.
- All statistics related to the offer rate are not reported when the number of applications for a group is less than 10. The percentage point difference between the offer rate and the average offer rate is not reported when the number of applications for a group is less than 50.
- Offer rates are reported as 0% if there are fewer than 5 offers, and 100% if the number of offers is within 5 of the number of applications. When the offer rate is reported as 0% or 100%, it is reported in italics.

Contents:

18 year old applicants:	P.1
18 year old applications:	P.2
18 year old applicants by sex:	P.3
18 year old applications by sex:	P.4
18 year old applicants by POLAR3 quintile:	P.7
18 year old applications by POLAR3 quintile:	P.8
18 year old applicants by ethnic group:	P.11
18 year old applications by ethnic group:	P.12
Applicants (all ages):	P.15
Applications (all ages):	P.16
Applicants (all ages) by sex:	P.17
Applications (all ages) by sex:	P.18
Applicants (all ages) by POLAR3 quintile:	P.19
Applications (all ages) by POLAR3 quintile:	P.20
Applicants (all ages) by ethnic group:	P.21
Applications (all ages) by ethnic group:	P.22

P.1 18 year old applicants

Statistic	2012	2013	2014	2015	2016	2017
June deadline applicants	10,035	8,370	8,710	7,995	9,555	9,655
Placed June deadline applicants	1,135	1,265	1,055	1,100	1,205	1,400
All placed applicants	1,425	1,505	1,435	1,615	1,595	1,995
June deadline applicants per 10,000 population	129.7	110.0	115.6	104.4	127.5	130.3
Placed June deadline applicants per 10,000	14.7	16.6	14.0	14.4	16.1	18.9
All placed applicants per 10,000 population	18.4	19.8	19.1	21.1	21.3	26.9

P.2 18 year old applications

Statistic	2012	2013	2014	2015	2016	2017
June deadline applications	10,335	8,600	8,945	8,185	9,790	9,875
Offers	7,815	6,910	6,950	6,140	7,945	7,950
Offer rate	75.7%	80.4%	77.7%	75.1%	81.1%	80.5%

P.3 18 year old applicants by sex

Statistic	Sex	2012	2013	2014	2015	2016	2017
June deadline applicants	Men	5,350	4,615	4,740	4,390	5,105	5,330
	Women	4,685	3,755	3,970	3,605	4,450	4,325
Placed June deadline applicants	Men	610	640	550	580	650	760
	Women	525	625	500	520	555	640
All placed applicants	Men	765	765	765	850	840	1,050
	Women	660	740	670	765	755	940
June deadline applicants per 10,000 population	Men	134.9	118.2	122.5	111.9	132.9	140.4
	Women	124.3	101.3	108.4	96.4	121.7	119.8
Placed June deadline applicants per 10,000 population	Men	15.4	16.4	14.2	14.8	16.9	20.0
	Women	14.0	16.8	13.7	13.9	15.2	17.7
All placed applicants per 10,000 population	Men	19.3	19.6	19.8	21.6	21.9	27.7
	Women	17.5	19.9	18.3	20.5	20.7	26.1

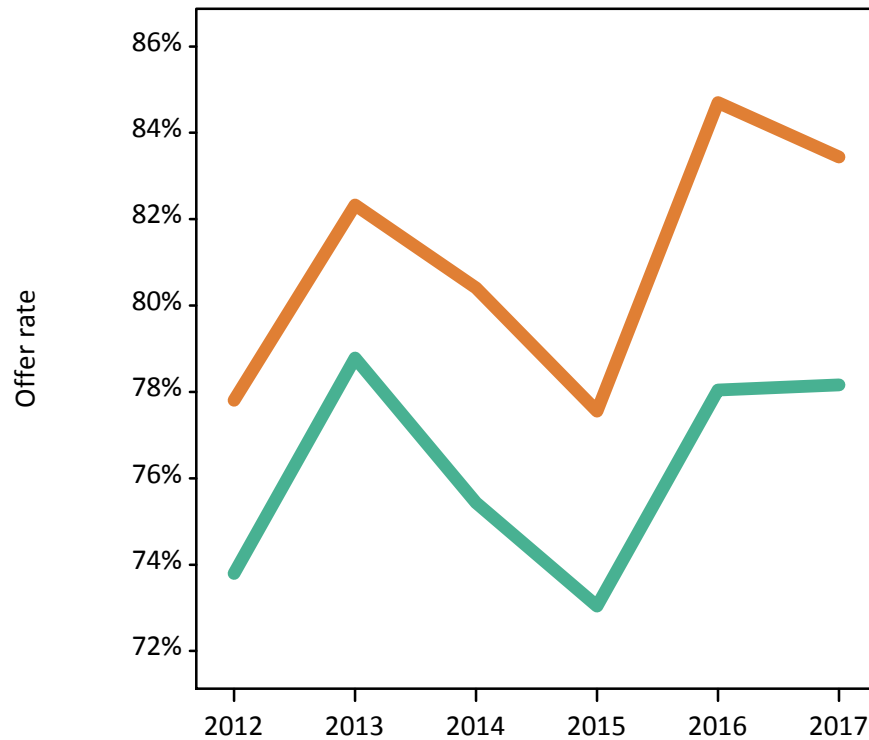
P.4 18 year old applications by sex

Statistic	Sex	2012	2013	2014	2015	2016	2017
June deadline applications	Men	5,555	4,780	4,915	4,520	5,270	5,470
	Women	4,775	3,820	4,030	3,660	4,520	4,400
Offers	Men	4,100	3,765	3,705	3,300	4,115	4,275
	Women	3,715	3,145	3,240	2,840	3,830	3,675
Offer rate	Men	73.8%	78.8%	75.4%	73.0%	78.0%	78.2%
	Women	77.8%	82.3%	80.4%	77.6%	84.7%	83.4%
Average offer rate	Men	74.1%	79.6%	76.2%	73.7%	78.7%	78.6%
	Women	77.5%	81.3%	79.5%	76.7%	83.9%	82.9%
Percentage point difference between offer rate and average offer rate	Men	-0.3	-0.9	-0.8	-0.7	-0.7	-0.4
	Women	0.3	1.1	0.9	0.8	0.8	0.6
Contribution of group to the average offer rate	Men	0.676	0.699	0.697	0.693	0.684	0.688
	Women	0.623	0.624	0.630	0.622	0.632	0.613

P.5 18 year old offer rate by sex

Note: The line for a group is not plotted when that group made fewer than 10 applications in any of the years from 2012-2017.

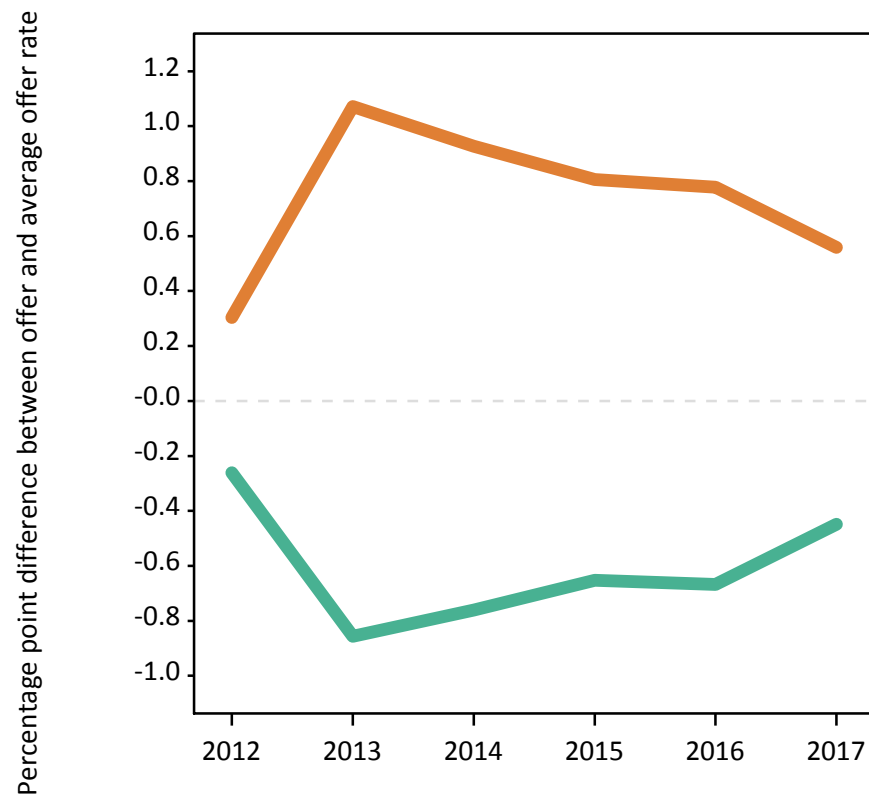
Men
Women



P.6 Percentage point difference between 18 year old offer rate and average offer rate by sex

Note: The line for a group is not plotted when that group made fewer than 50 applications in any of the years from 2012-2017.

Men
Women



P.7 18 year old applicants by POLAR3 quintile

Statistic	POLAR3 quintile	2012	2013	2014	2015	2016	2017
June deadline applicants	Quintile 1	535	505	585	460	645	550
	Quintile 2	1,090	965	1,045	915	1,110	1,145
	Quintile 3	2,315	1,950	2,110	1,915	2,285	2,350
	Quintile 4	2,770	2,200	2,275	2,145	2,470	2,505
	Quintile 5	3,310	2,735	2,685	2,540	3,020	3,075
Placed June deadline applicants	Quintile 1	65	80	75	45	65	65
	Quintile 2	125	145	130	105	125	165
	Quintile 3	255	290	255	255	295	300
	Quintile 4	310	330	270	310	335	400
	Quintile 5	380	420	325	380	385	470
All placed applicants	Quintile 1	80	90	85	65	75	85
	Quintile 2	155	170	165	135	150	215
	Quintile 3	315	355	330	390	385	440
	Quintile 4	385	385	375	435	435	555
	Quintile 5	490	500	475	590	545	700
June deadline applicants per 10,000 population	Quintile 1	37.6	36.1	41.9	33.0	47.9	41.3
	Quintile 2	72.8	65.5	71.4	61.5	76.9	80.5
	Quintile 3	149.8	127.9	140.1	124.6	152.1	157.9
	Quintile 4	174.5	140.8	147.6	137.0	160.0	164.1
	Quintile 5	196.9	165.5	164.6	151.7	182.8	187.3
Placed June deadline applicants per 10,000 population	Quintile 1	4.6	5.6	5.2	3.3	4.7	4.8
	Quintile 2	8.4	10.0	8.7	7.1	8.6	11.7
	Quintile 3	16.4	19.0	17.0	16.7	19.8	20.1
	Quintile 4	19.5	21.2	17.5	19.8	21.6	26.1
	Quintile 5	22.6	25.3	19.9	22.8	23.3	28.6
All placed applicants per 10,000 population	Quintile 1	5.5	6.6	6.2	4.7	5.6	6.2
	Quintile 2	10.5	11.5	11.2	9.0	10.3	15.0
	Quintile 3	20.4	23.3	22.1	25.3	25.7	29.5
	Quintile 4	24.2	24.7	24.5	27.9	28.2	36.2
	Quintile 5	29.0	30.4	29.1	35.1	33.0	42.6

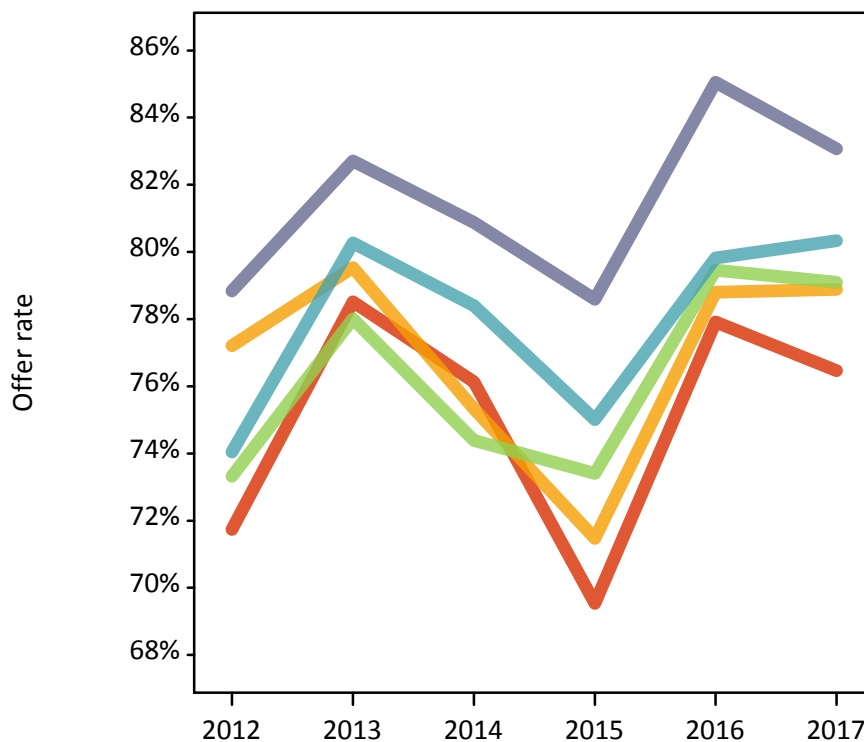
P.8 18 year old applications by POLAR3 quintile

Statistic	POLAR3 quintile	2012	2013	2014	2015	2016	2017
June deadline applications	Quintile 1	550	510	595	475	660	560
	Quintile 2	1,130	985	1,065	935	1,135	1,165
	Quintile 3	2,375	2,010	2,160	1,950	2,335	2,395
	Quintile 4	2,845	2,265	2,345	2,195	2,530	2,580
	Quintile 5	3,405	2,810	2,765	2,605	3,105	3,140
Offers	Quintile 1	395	400	455	330	515	430
	Quintile 2	875	785	805	670	895	920
	Quintile 3	1,740	1,570	1,605	1,430	1,855	1,895
	Quintile 4	2,110	1,820	1,835	1,645	2,020	2,070
	Quintile 5	2,685	2,325	2,240	2,050	2,640	2,610
Offer rate	Quintile 1	71.7%	78.5%	76.1%	69.5%	77.9%	76.5%
	Quintile 2	77.2%	79.5%	75.3%	71.5%	78.8%	78.9%
	Quintile 3	73.3%	78.0%	74.4%	73.4%	79.5%	79.1%
	Quintile 4	74.0%	80.3%	78.4%	75.0%	79.8%	80.3%
	Quintile 5	78.8%	82.7%	80.9%	78.6%	85.1%	83.1%
Average offer rate	Quintile 1	72.4%	79.9%	76.0%	70.8%	78.2%	78.3%
	Quintile 2	75.5%	80.0%	74.5%	71.6%	79.3%	78.1%
	Quintile 3	74.4%	78.8%	76.2%	73.1%	80.0%	79.5%
	Quintile 4	74.7%	80.1%	77.8%	75.2%	80.9%	80.4%
	Quintile 5	78.0%	81.9%	80.3%	78.4%	83.5%	82.6%
Percentage point difference between offer rate and average offer rate	Quintile 1	-0.7	-1.4	0.1	-1.2	-0.3	-1.8
	Quintile 2	1.7	-0.5	0.8	-0.1	-0.5	0.8
	Quintile 3	-1.1	-0.8	-1.8	0.3	-0.6	-0.4
	Quintile 4	-0.7	0.2	0.6	-0.2	-1.1	-0.0
	Quintile 5	0.9	0.8	0.6	0.2	1.6	0.4
Contribution of group to the average offer rate	Quintile 1	0.117	0.145	0.148	0.132	0.148	0.129
	Quintile 2	0.180	0.188	0.198	0.189	0.182	0.183
	Quintile 3	0.287	0.295	0.305	0.308	0.292	0.295
	Quintile 4	0.329	0.319	0.315	0.331	0.311	0.311
	Quintile 5	0.389	0.396	0.371	0.385	0.374	0.377

P.9 18 year old offer rate by POLAR3 quintile

Note: The line for a group is not plotted when that group made fewer than 10 applications in any of the years from 2012-2017.

- Quintile 1
- Quintile 2
- Quintile 3
- Quintile 4
- Quintile 5



P.10 Percentage point difference between 18 year old offer rate and average offer rate by POLAR3 quintile

Note: The line for a group is not plotted when that group made fewer than 50 applications in any of the years from 2012-2017.

- Quintile 1
- Quintile 2
- Quintile 3
- Quintile 4
- Quintile 5



P.11 18 year old applicants by ethnic group

Statistic	Ethnic group	2012	2013	2014	2015	2016	2017
June deadline applicants	Asian	2,700	2,140	2,310	2,115	2,670	3,050
	Black	1,555	1,300	1,385	1,270	1,420	1,455
	Mixed	560	495	515	530	625	670
	White	4,740	4,040	4,020	3,610	4,210	3,785
	Other	415	330	410	385	525	590
Placed June deadline applicants	Asian	320	350	270	320	345	450
	Black	150	195	175	165	185	245
	Mixed	75	90	85	80	95	115
	White	540	550	465	470	500	495
	Other	50	70	50	55	75	85
All placed applicants	Asian	430	445	425	525	505	705
	Black	200	245	230	260	260	350
	Mixed	90	110	105	110	125	150
	White	630	615	585	610	585	620
	Other	65	80	75	95	110	145
June deadline applicants per 10,000 population	Asian	416.9	324.2	340.5	298.5	371.0	414.6
	Black	551.5	437.2	456.9	399.6	453.6	462.7
	Mixed	215.0	182.7	178.7	172.2	198.9	208.7
	White	73.4	64.2	65.2	58.0	69.6	63.8
	Other	470.1	365.0	442.6	400.5	525.6	571.8
Placed June deadline applicants per 10,000 population	Asian	49.6	53.1	39.7	45.5	47.7	61.3
	Black	52.6	65.7	57.7	51.2	58.8	77.5
	Mixed	28.0	33.3	29.2	25.9	30.2	35.2
	White	8.3	8.7	7.5	7.5	8.2	8.4
	Other	55.4	78.3	51.6	58.1	75.4	81.5
All placed applicants per 10,000 population	Asian	66.6	67.8	62.7	73.9	69.9	96.0
	Black	71.4	82.9	75.5	82.0	82.7	110.6
	Mixed	34.6	39.9	36.8	36.3	40.0	47.4
	White	9.7	9.7	9.4	9.8	9.7	10.4
	Other	75.7	86.0	82.7	96.5	110.5	141.7

P.12 18 year old applications by ethnic group

Statistic	Ethnic group	2012	2013	2014	2015	2016	2017
June deadline applications	Asian	2,785	2,195	2,370	2,170	2,725	3,100
	Black	1,590	1,320	1,405	1,290	1,440	1,485
	Mixed	575	505	525	550	640	700
	White	4,890	4,170	4,150	3,695	4,340	3,880
	Other	430	335	420	390	540	600
Offers	Asian	2,040	1,760	1,825	1,650	2,280	2,565
	Black	1,050	865	955	840	1,080	1,095
	Mixed	435	400	415	410	505	560
	White	3,955	3,555	3,385	2,890	3,540	3,165
	Other	280	275	310	280	445	480
Offer rate	Asian	73.3%	80.2%	77.1%	76.1%	83.7%	82.8%
	Black	66.0%	65.6%	67.9%	65.2%	75.0%	73.8%
	Mixed	76.1%	79.4%	79.4%	74.5%	78.8%	79.8%
	White	80.9%	85.2%	81.5%	78.1%	81.6%	81.5%
	Other	65.6%	81.0%	73.5%	71.9%	82.2%	79.9%
Average offer rate	Asian	74.7%	80.6%	78.6%	77.2%	84.0%	82.5%
	Black	68.5%	71.2%	70.4%	67.1%	76.8%	76.6%
	Mixed	75.3%	79.8%	78.1%	73.9%	79.9%	78.6%
	White	79.2%	83.2%	79.7%	76.9%	80.8%	80.6%
	Other	68.7%	80.8%	76.0%	72.8%	81.2%	81.5%
Percentage point difference between offer rate and average offer rate	Asian	-1.4	-0.4	-1.5	-1.1	-0.4	0.3
	Black	-2.6	-5.6	-2.5	-2.0	-1.9	-2.8
	Mixed	0.8	-0.4	1.3	0.6	-1.1	1.3
	White	1.7	2.1	1.8	1.2	0.8	0.9
	Other	-3.2	0.2	-2.5	-0.8	1.0	-1.6
Contribution of group to the average offer rate	Asian	0.387	0.385	0.370	0.370	0.386	0.417
	Black	0.254	0.271	0.256	0.258	0.233	0.228
	Mixed	0.121	0.149	0.130	0.154	0.132	0.138
	White	0.588	0.601	0.567	0.560	0.554	0.509
	Other	0.123	0.127	0.132	0.137	0.131	0.122

P.13 18 year old offer rate by ethnic group

Note: The line for a group is not plotted when that group made fewer than 10 applications in any of the years from 2012-2017.

- Asian
- Black
- Mixed
- White
- Other



P.14 Percentage point difference between 18 year old offer rate and average offer rate by ethnic group

Note: The line for a group is not plotted when that group made fewer than 50 applications in any of the years from 2012-2017.

- Asian
- Black
- Mixed
- White
- Other



P.15 Applicants (all ages)

Statistic	2012	2013	2014	2015	2016	2017
June deadline applicants	17,530	15,465	16,605	15,695	17,335	16,525
Placed June deadline applicants	1,900	2,145	1,830	1,840	1,995	2,185
All placed applicants	2,455	2,640	2,530	2,790	2,800	3,265

P.16 Applications (all ages)

Statistic	2012	2013	2014	2015	2016	2017
June deadline applications	18,115	15,970	17,150	16,175	17,865	16,975
Offers	11,155	10,550	10,940	10,095	12,220	11,705
Offer rate	61.6%	66.0%	63.8%	62.4%	68.4%	69.0%

P.17 Applicants (all ages) by sex

Statistic	Sex	2012	2013	2014	2015	2016	2017
June deadline applicants	Men	9,485	8,585	9,230	8,790	9,610	9,350
	Women	8,040	6,880	7,380	6,905	7,725	7,180
Placed June deadline applicants	Men	1,025	1,130	970	985	1,095	1,190
	Women	875	1,015	860	855	905	1,000
All placed applicants	Men	1,345	1,405	1,375	1,510	1,510	1,735
	Women	1,110	1,235	1,155	1,285	1,290	1,530

P.18 Applications (all ages) by sex

Statistic	Sex	2012	2013	2014	2015	2016	2017
June deadline applications	Men	9,900	8,945	9,620	9,095	9,975	9,660
	Women	8,215	7,025	7,535	7,080	7,890	7,315
Offers	Men	5,990	5,885	6,050	5,585	6,560	6,415
	Women	5,165	4,665	4,890	4,510	5,660	5,290
Offer rate	Men	60.5%	65.8%	62.9%	61.4%	65.8%	66.4%
	Women	62.9%	66.4%	64.9%	63.7%	71.7%	72.3%

P.19 Applicants (all ages) by POLAR3 quintile

Statistic	POLAR3 quintile	2012	2013	2014	2015	2016	2017
June deadline applicants	Quintile 1	980	955	1,095	960	1,130	980
	Quintile 2	1,865	1,670	1,935	1,790	1,960	1,895
	Quintile 3	4,210	3,700	4,135	3,870	4,170	4,065
	Quintile 4	4,755	4,080	4,340	4,195	4,565	4,340
	Quintile 5	5,660	5,020	5,060	4,830	5,470	5,180
Placed June deadline applicants	Quintile 1	100	130	115	95	110	105
	Quintile 2	205	245	215	185	200	235
	Quintile 3	405	505	435	435	465	485
	Quintile 4	525	565	490	510	565	635
	Quintile 5	655	695	570	615	660	725
All placed applicants	Quintile 1	130	150	140	130	140	135
	Quintile 2	260	290	285	245	265	325
	Quintile 3	520	620	580	675	655	740
	Quintile 4	655	695	700	755	765	915
	Quintile 5	880	880	825	980	975	1,140

P.20 Applications (all ages) by POLAR3 quintile

Statistic	POLAR3 quintile	2012	2013	2014	2015	2016	2017
June deadline applications	Quintile 1	1,010	975	1,120	995	1,165	1,005
	Quintile 2	1,935	1,720	2,000	1,840	2,015	1,935
	Quintile 3	4,340	3,825	4,270	3,980	4,280	4,155
	Quintile 4	4,925	4,230	4,485	4,330	4,720	4,490
	Quintile 5	5,850	5,180	5,235	4,980	5,640	5,320
Offers	Quintile 1	585	625	685	595	770	640
	Quintile 2	1,205	1,155	1,240	1,095	1,335	1,290
	Quintile 3	2,535	2,410	2,550	2,380	2,855	2,805
	Quintile 4	3,005	2,765	2,885	2,700	3,165	3,105
	Quintile 5	3,800	3,570	3,550	3,300	4,070	3,815
Offer rate	Quintile 1	58.2%	64.1%	61.1%	59.7%	66.3%	63.9%
	Quintile 2	62.3%	67.1%	62.1%	59.7%	66.3%	66.8%
	Quintile 3	58.4%	63.0%	59.8%	59.7%	66.8%	67.4%
	Quintile 4	61.0%	65.4%	64.3%	62.3%	67.0%	69.2%
	Quintile 5	64.9%	68.9%	67.8%	66.2%	72.2%	71.7%

P.21 Applicants (all ages) by ethnic group

Statistic	Ethnic group	2012	2013	2014	2015	2016	2017
June deadline applicants	Asian	4,695	3,945	4,365	4,155	4,755	5,110
	Black	3,575	3,120	3,350	3,020	3,170	2,990
	Mixed	1,010	955	1,030	1,050	1,170	1,110
	White	7,240	6,560	6,865	6,420	6,970	6,010
	Other	825	705	825	835	1,030	1,085
Placed June deadline applicants	Asian	540	605	505	525	590	705
	Black	305	370	310	280	335	390
	Mixed	130	155	130	140	150	165
	White	820	875	780	785	785	750
	Other	85	115	95	95	115	145
All placed applicants	Asian	755	800	815	895	910	1,175
	Black	410	475	430	480	510	600
	Mixed	165	190	170	200	210	235
	White	990	995	955	1,015	955	940
	Other	115	140	140	165	180	260

P.22 Applications (all ages) by ethnic group

Statistic	Ethnic group	2012	2013	2014	2015	2016	2017
June deadline applications	Asian	4,855	4,080	4,515	4,305	4,880	5,225
	Black	3,675	3,180	3,425	3,075	3,240	3,045
	Mixed	1,045	980	1,060	1,085	1,215	1,155
	White	7,490	6,815	7,120	6,635	7,210	6,195
	Other	860	730	850	860	1,070	1,115
Offers	Asian	3,060	2,845	3,095	2,850	3,615	3,800
	Black	1,625	1,505	1,635	1,485	1,845	1,740
	Mixed	650	640	660	685	795	795
	White	5,255	4,955	4,910	4,415	5,080	4,460
	Other	465	495	530	520	725	765
Offer rate	Asian	63.0%	69.7%	68.6%	66.2%	74.0%	72.7%
	Black	44.2%	47.4%	47.8%	48.2%	56.9%	57.2%
	Mixed	62.0%	65.4%	62.2%	63.3%	65.6%	68.7%
	White	70.2%	72.7%	69.0%	66.6%	70.5%	72.0%
	Other	54.0%	68.1%	62.3%	60.3%	67.7%	68.4%

Technical Notes and Definitions

UCAS undergraduate scheme

Adjustment

Adjustment allows applicants who have met and exceeded the terms of their conditional firm offer to seek and find a place at another provider whilst keeping their place at their original firm choice provider.

Clearing

Clearing is a route for applicants that are not placed and holding no offers to find a place on courses with vacancies.

Cycle year

The UCAS application cycle which runs from September to October the following year. For example the 2017 cycle runs from September 2016 through to October 2017.

End of cycle

The point in the cycle to which the numbers in this report refer, and the point at which the cycle is closed such that no more applications or offers can be made, and no more applicants can be placed. Numbers reported at the end of cycle exclude information on a small number of applicants who cancelled during the cycle.

Extra

Applicants who are unsuccessful in obtaining an offer or decline all offers may be eligible to apply through Extra, where they can apply to one further course at a time. Extra operates from 25 February until early July. It provides applicants who are eligible the possibility of obtaining an offer before exam results are published and Clearing starts.

June 30 deadline

The deadline for main scheme applications. Applicants who apply after this date will go directly into Clearing.

Record of Prior Acceptance (RPA)

RPA is an acceptance route used when a provider informs UCAS of applicants it has accepted outside of the normal application process (e.g. individuals who have applied directly to the provider).

Reporting groups

Ethnic group

High level grouping of ethnic origin as declared by the applicant: 'White', 'Black', 'Asian', 'Mixed', 'Other', 'Unknown'. Applicants who declare themselves as 'Unknown' ethnic origin are not reported in these tables, but are included in the associated csv data file.

POLAR3 quintile

Developed by HEFCE, POLAR3 classifies small areas across the UK into five groups according to their level of young participation in Higher Education. Each of these groups represents around 20 per cent of young people and is ranked from Quintile 1 (areas with the lowest young participation rates, considered as the most disadvantaged) to Quintile 5 (highest young participation rates, considered most advantaged). POLAR3 is based on the participation rates of young people between 2005 and 2009 who entered Higher Education between 2005-06 and 2010-11, therefore is most suitable for applicants aged 19 and under. These groups are assigned using the postcode declared by the applicant at the time of their application. If a UK postcode is invalid, considered unsafe for measurement or there is no link to Census geography possible then the applicant is not assigned to a quintile. Applicants with no POLAR3 quintile are not reported.

Sex

Sex as declared by the applicant.

SIMD 2016 quintile

Scottish index of multiple deprivation (SIMD) identifies small area concentrations of multiple deprivation across all of Scotland, providing a relative measure of deprivation amongst 6505 small areas (data zones) based on 7 socio-economic domains. These small areas are classified into five groups ranked from Quintile 1 (considered the most deprived) to Quintile 5 (considered least deprived), with equal populations in each quintile. Quintiles are assigned using the postcode declared by the applicant, applicants declaring invalid postcodes are classified as 'Not assigned' and are not reported.

SIMD is only defined for applicants domiciled in Scotland, therefore any applicants domiciled outside of Scotland cannot be assigned to an SIMD quintile and so are not reported for this measure.

SIMD is only reported for providers in Scotland. Application and entry rates by SIMD are reported in the 2017 End of Cycle Report and the 2017 cycle January deadline application rate report.

Statistics reported in the tables

All placed applicants

The number of applicants placed for entry into higher education at the provider through one of their choices, including any choices made through Extra, or via Adjustment, Clearing or RPA.

All placed applicants per 10,000 population

The number of total UK domiciled 18 year old placed applicants for entry into higher education at the provider divided by the number of UK 18 year olds in the population, multiplied by 10,000. This gives the number of 18 year olds, for every 10,000 in the population, that were placed at the provider through one of their choices, including any choices made through Extra, or via Adjustment, Clearing or RPA. It is an alternative way of expressing the entry rate to a provider. By referencing the underlying population this statistic shows how the number of placed applicants is changing in relation to the available pool of potential applicants and so gives the chance that somebody from the group will be placed at a provider.

This statistic is only reported for 18 year olds.

Average offer rate

The offer rate that you might expect if the predicted grades and subject choice of applicants were the only factors that influenced whether an applicant was made an offer by the provider. The average offer rate is calculated by dividing applicants according to their specific combination of grades (for A levels the best three predicted grades are used, for BTECs, International Baccalaureate and Scottish Highers and Advanced Highers, predicted grades along with any grades already achieved upon applying are used) and subject choice. For each combination the number of main scheme offers is divided by the number of main scheme applications, to give an overall offer rate. This is then multiplied by the number of applications made by the group for which the average offer rate is being calculated (for example POLAR3 quintile 1), to give an average number of offers for that group. These average number of offers are then added together across all combinations of predicted grade and subject and divided by the number of main scheme applications from the group to give the average offer rate.

The average offer rate does not attempt to control for any other factors that may play a part in the decision to make an offer, such as the subject of the qualifications studied, their relevance to a course, or the grade in each subject; higher numbers of A levels being studied; the exact profile of grades predicted; personal statements; teacher references; interviews; or any other criteria (such as work experience or portfolios) that may be part of the admissions decision.

This statistic is only reported for 18 year olds.

Contribution of group to the average offer rate

The way in which the average offer rate is defined means that the pattern of application and offers of a group (for example POLAR3 quintile 1) will always contribute, in part, to the average offer rate for that group. When this contribution is large, the average offer rate will mainly reflect the patterns for the group, meaning that the value of the average offer rate will be similar to the offer rate, the percentage point difference statistic will be small, and any real difference between the offer rate and what might be expected given the predicted grades and subject choices of the applicants will be difficult to detect.

Values of the contribution of group to the average offer rate range between 0 and 1. The closer the value is to 1 the greater the contribution a group makes to its own average offer rate.

This statistic is only reported for 18 year olds.

Placed June deadline applicants

An applicant who has been placed for entry into higher education at the provider through a June deadline application.

Placed June deadline applicants per 10,000 population

The number of UK domiciled 18 year old placed June deadline applicants at the provider divided by the number of UK 18 year olds in the population, multiplied by 10,000. This gives the number of 18 year olds, for every 10,000 in the population, that were placed at the provider through one of their June deadline applications. It is an alternative way of expressing the entry rate to a provider, but for placed June deadline applicants only. By referencing the underlying population this statistic shows how the number of placed June deadline applicants is changing in relation to the available pool of potential 18 year old applicants and so gives the chance that somebody from the group will be placed at a provider through a June deadline application.

This statistic is only reported for 18 year olds.

June deadline applications

An application (or choice) to a course in higher education to the provider that is made by the June 30 deadline. Each applicant can make up to five choices this way. The number of June deadline applications does not include choices made through the following routes: Clearing, Extra, Adjustment and RPAs. Applications made to October deadline courses received after the October deadline are not included in these statistics.

June deadline applicants

The number of applicants that made at least one application to the provider by the June 30 deadline.

June deadline applicants per 10,000 population

The number of UK domiciled 18 year old June deadline applicants to the provider divided by the number of UK 18 year olds in the population, multiplied by 10,000. This gives the number of 18 year olds, for every 10,000 in the population, who applied by the June 30 deadline. It is equivalent to the application rate. By referencing the underlying population this statistic shows how the number of June deadline applicants is changing in relation to the available pool of potential 18 year old applicants and so gives the chance that somebody from the group will apply to a provider by the June 30 deadline.

This statistic is only reported for 18 year olds.

Offers

An offer is defined as a provider's decision in response to an application to offer a place to an applicant, often subject to the applicant satisfying academic and/or other criteria, via a June deadline application (i.e. does not cover choices made through the following routes: Clearing, Extra, Adjustment and RPAs).

Offer rate

The number of offers made divided by the number of June deadline applications. This gives the proportion of all June deadline applications to the provider that received an offer.

Percentage point difference between offer rate and average offer rate

The offer rate minus the average offer rate.

The percentage point difference can be compared to the expected range of statistical variation resulting from the calculation of the average offer rate using the Average Offer Rate Lookup Table. Where the value of the percentage point difference lies outside of this range, the percentage point difference may be considered to represent a real difference between the offer rate and the average offer rate.

Other definitions

Age

This analysis uses country-specific age definitions that align with the cut off points for school and college cohorts within the different administrations of the UK. For England and Wales, ages are defined on the 31 August, for Northern Ireland on the 1 July and for Scotland on the 28 February the following year. Defining ages in this way matches the assignment of children to school cohorts. For applicants outside of the UK a cohort cut off of 31 August has been used. Numbers for applicants aged 17 and under are included in the tables that report numbers for all age groups. Providers in Scotland typically receive a higher proportion of applicants aged 17 and under compared to providers elsewhere in the UK.

Provider

A higher education provider - a university or college.

UK domiciled

Declared area of permanent residence within England, Northern Ireland, Scotland and Wales. Applicants from the Channel Islands and Isle of Man are not included.