

B38 Bishop Grosseteste University

Cycle years: 2012 - 2017

Cycle Reference Point: End of Cycle

Applicant coverage: UK domiciled

Reporting groups: Sex, POLAR3, ethnic group

Applicant statistics: June deadline applicants, placed June deadline applicants, all placed applicants, June deadline applicants per 10,000 population, placed June deadline applicants per 10,000 population, all placed applicants per 10,000 population

Application statistics: June deadline applications, offers, offer rate, average offer rate, percentage point difference between offer rate and average offer rate, contribution of group to the average offer rate

Non-disclosure controls: To avoid the disclosure of information about any individual the following measures are taken

- Applicants, placed applicants, applications and offers are rounded to the nearest 5.
- Applicants/placed applicants per 10,000 population figures are reported as 0 if the applicant/placed applicant figures are rounded to 0.
- All statistics related to the offer rate are not reported when the number of applications for a group is less than 10. The percentage point difference between the offer rate and the average offer rate is not reported when the number of applications for a group is less than 50.
- Offer rates are reported as 0% if there are fewer than 5 offers, and 100% if the number of offers is within 5 of the number of applications. When the offer rate is reported as 0% or 100%, it is reported in italics.

Contents:

18 year old applicants:	P.1
18 year old applications:	P.2
18 year old applicants by sex:	P.3
18 year old applications by sex:	P.4
18 year old applicants by POLAR3 quintile:	P.7
18 year old applications by POLAR3 quintile:	P.8
18 year old applicants by ethnic group:	P.11
18 year old applications by ethnic group:	P.12
Applicants (all ages):	P.15
Applications (all ages):	P.16
Applicants (all ages) by sex:	P.17
Applications (all ages) by sex:	P.18
Applicants (all ages) by POLAR3 quintile:	P.19
Applications (all ages) by POLAR3 quintile:	P.20
Applicants (all ages) by ethnic group:	P.21
Applications (all ages) by ethnic group:	P.22

P.1 18 year old applicants

Statistic	2012	2013	2014	2015	2016	2017
June deadline applicants	1,095	940	940	1,000	840	750
Placed June deadline applicants	245	265	295	285	250	245
All placed applicants	295	300	320	320	275	275
June deadline applicants per 10,000 population	14.1	12.4	12.5	13.0	11.2	10.1
Placed June deadline applicants per 10,000	3.1	3.5	3.9	3.7	3.3	3.3
All placed applicants per 10,000 population	3.8	3.9	4.3	4.2	3.6	3.7

P.2 18 year old applications

Statistic	2012	2013	2014	2015	2016	2017
June deadline applications	1,175	1,065	1,050	1,140	950	820
Offers	560	645	705	955	855	710
Offer rate	47.6%	60.4%	67.1%	83.8%	90.3%	86.8%

P.3 18 year old applicants by sex

Statistic	Sex	2012	2013	2014	2015	2016	2017
June deadline applicants	Men	215	165	155	195	160	145
	Women	880	780	785	805	680	605
Placed June deadline applicants	Men	45	60	40	50	40	50
	Women	195	210	255	235	210	195
All placed applicants	Men	65	65	45	60	45	55
	Women	235	230	280	260	230	215
June deadline applicants per 10,000 population	Men	5.4	4.2	4.0	5.0	4.1	3.8
	Women	23.3	21.0	21.5	21.5	18.7	16.8
Placed June deadline applicants per 10,000 population	Men	1.2	1.5	1.0	1.3	1.1	1.3
	Women	5.2	5.6	7.0	6.2	5.7	5.4
All placed applicants per 10,000 population	Men	1.6	1.7	1.1	1.5	1.1	1.5
	Women	6.2	6.3	7.6	7.0	6.3	6.0

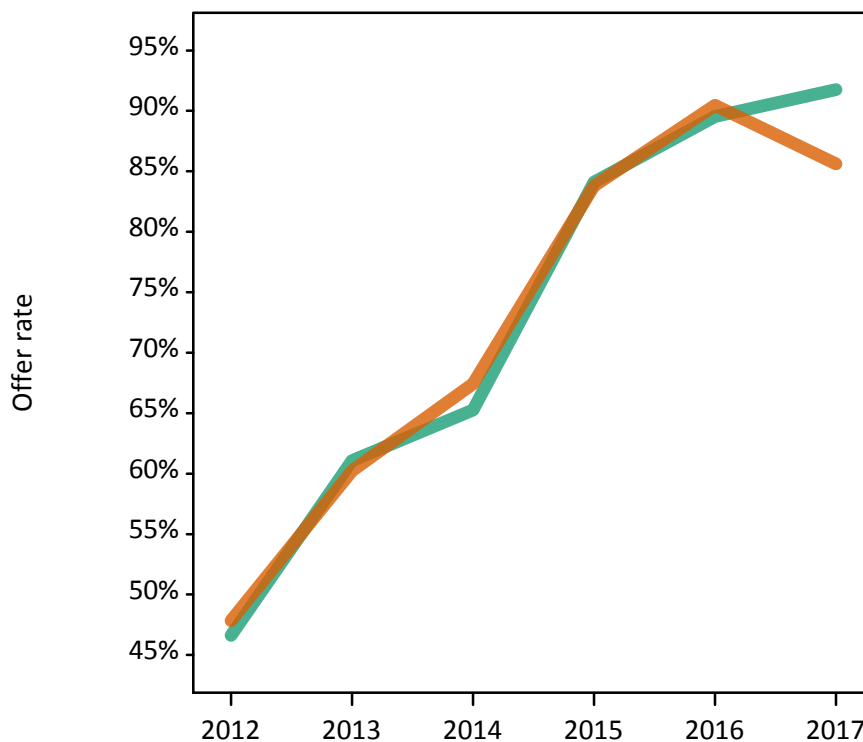
P.4 18 year old applications by sex

Statistic	Sex	2012	2013	2014	2015	2016	2017
June deadline applications	Men	225	185	165	215	170	160
	Women	955	880	880	925	775	660
Offers	Men	105	115	110	180	155	145
	Women	455	530	595	775	700	565
Offer rate	Men	46.6%	61.1%	65.3%	84.1%	89.5%	91.8%
	Women	47.8%	60.2%	67.4%	83.8%	90.5%	85.6%
Average offer rate	Men	45.3%	61.5%	64.0%	82.8%	91.1%	90.1%
	Women	48.2%	60.1%	67.7%	84.1%	90.1%	86.0%
Percentage point difference between offer rate and average offer rate	Men	1.4	-0.5	1.3	1.3	-1.5	1.7
	Women	-0.3	0.1	-0.2	-0.3	0.3	-0.4
Contribution of group to the average offer rate	Men	0.329	0.297	0.368	0.445	0.432	0.490
	Women	0.843	0.852	0.880	0.872	0.874	0.878

P.5 18 year old offer rate by sex

Note: The line for a group is not plotted when that group made fewer than 10 applications in any of the years from 2012-2017.

Men
Women



P.6 Percentage point difference between 18 year old offer rate and average offer rate by sex

Note: The line for a group is not plotted when that group made fewer than 50 applications in any of the years from 2012-2017.

Men
Women



P.7 18 year old applicants by POLAR3 quintile

Statistic	POLAR3 quintile	2012	2013	2014	2015	2016	2017
June deadline applicants	Quintile 1	225	170	170	205	175	155
	Quintile 2	240	210	190	215	210	185
	Quintile 3	220	230	235	225	200	160
	Quintile 4	215	195	210	230	155	145
	Quintile 5	195	135	135	125	105	100
Placed June deadline applicants	Quintile 1	60	45	50	55	55	60
	Quintile 2	55	75	70	60	75	60
	Quintile 3	50	70	80	75	60	55
	Quintile 4	45	45	65	75	45	50
	Quintile 5	35	35	30	20	15	20
All placed applicants	Quintile 1	70	45	55	60	60	65
	Quintile 2	65	85	75	65	80	65
	Quintile 3	60	80	90	85	65	60
	Quintile 4	55	50	70	80	50	55
	Quintile 5	45	40	35	25	15	25
June deadline applicants per 10,000 population	Quintile 1	15.7	12.2	12.1	14.6	12.9	11.7
	Quintile 2	16.0	14.4	13.1	14.4	14.4	13.2
	Quintile 3	14.2	15.0	15.5	14.6	13.2	10.6
	Quintile 4	13.5	12.4	13.8	14.8	10.0	9.5
	Quintile 5	11.6	8.2	8.2	7.4	6.3	6.2
Placed June deadline applicants per 10,000 population	Quintile 1	4.1	3.1	3.7	3.8	3.9	4.5
	Quintile 2	3.8	5.0	4.6	4.0	5.1	4.2
	Quintile 3	3.2	4.5	5.4	4.9	3.9	3.6
	Quintile 4	2.7	2.8	4.2	4.7	3.0	3.3
	Quintile 5	2.1	2.2	1.9	1.3	1.0	1.3
All placed applicants per 10,000 population	Quintile 1	4.8	3.2	4.1	4.4	4.3	5.0
	Quintile 2	4.4	5.7	5.1	4.4	5.4	4.6
	Quintile 3	3.9	5.1	5.9	5.7	4.4	4.0
	Quintile 4	3.6	3.3	4.5	5.2	3.3	3.5
	Quintile 5	2.7	2.4	2.0	1.5	1.0	1.6

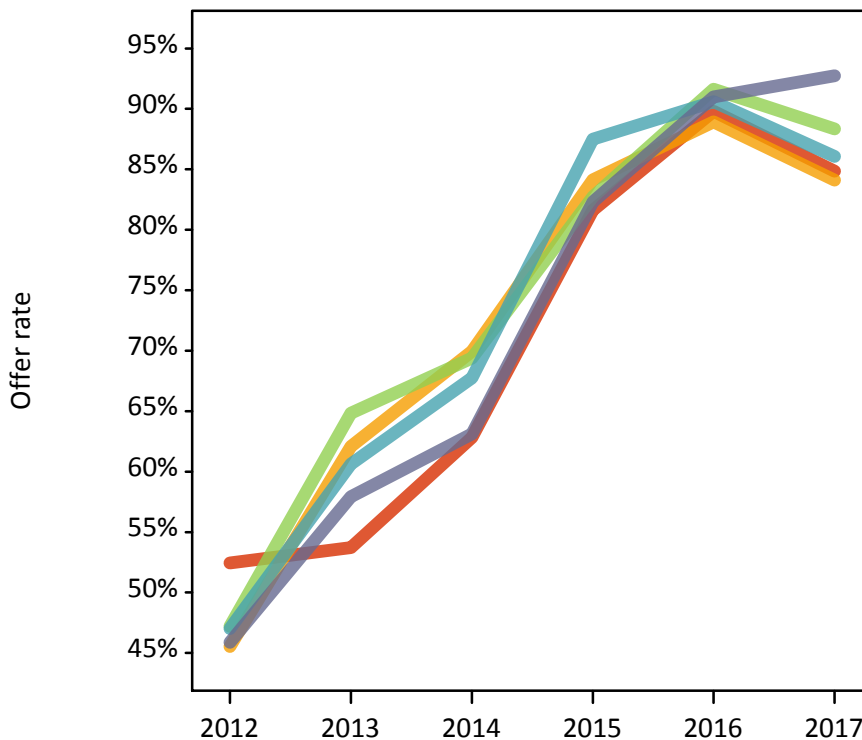
P.8 18 year old applications by POLAR3 quintile

Statistic	POLAR3 quintile	2012	2013	2014	2015	2016	2017
June deadline applications	Quintile 1	245	190	190	235	205	165
	Quintile 2	255	250	215	245	245	195
	Quintile 3	235	255	260	270	215	180
	Quintile 4	235	225	245	255	170	165
	Quintile 5	205	145	140	130	110	110
Offers	Quintile 1	130	100	120	190	185	140
	Quintile 2	115	155	150	205	215	165
	Quintile 3	110	165	180	225	195	160
	Quintile 4	110	135	165	225	155	140
	Quintile 5	95	85	90	105	100	100
Offer rate	Quintile 1	52.5%	53.7%	62.8%	81.6%	89.8%	84.8%
	Quintile 2	45.5%	62.1%	70.0%	84.1%	88.9%	84.1%
	Quintile 3	47.2%	64.8%	69.4%	82.7%	91.6%	88.3%
	Quintile 4	47.0%	60.6%	67.8%	87.5%	90.6%	86.1%
	Quintile 5	45.9%	57.9%	63.1%	82.3%	91.0%	92.7%
Average offer rate	Quintile 1	48.9%	59.8%	67.2%	84.7%	90.7%	88.0%
	Quintile 2	48.1%	61.1%	66.6%	82.8%	91.2%	86.0%
	Quintile 3	46.2%	61.8%	66.0%	83.5%	89.4%	86.1%
	Quintile 4	47.2%	58.4%	68.7%	84.9%	89.8%	85.5%
	Quintile 5	47.8%	60.5%	66.9%	82.8%	89.8%	89.2%
Percentage point difference between offer rate and average offer rate	Quintile 1	3.6	-6.1	-4.3	-3.1	-0.9	-3.1
	Quintile 2	-2.6	1.0	3.4	1.4	-2.3	-1.9
	Quintile 3	1.0	3.0	3.4	-0.8	2.3	2.2
	Quintile 4	-0.2	2.2	-1.0	2.6	0.7	0.6
	Quintile 5	-1.9	-2.6	-3.8	-0.5	1.2	3.6
Contribution of group to the average offer rate	Quintile 1	0.319	0.278	0.290	0.354	0.374	0.409
	Quintile 2	0.295	0.325	0.315	0.365	0.390	0.432
	Quintile 3	0.279	0.339	0.348	0.381	0.383	0.417
	Quintile 4	0.302	0.322	0.331	0.380	0.381	0.402
	Quintile 5	0.277	0.234	0.241	0.271	0.316	0.371

P.9 18 year old offer rate by POLAR3 quintile

Note: The line for a group is not plotted when that group made fewer than 10 applications in any of the years from 2012-2017.

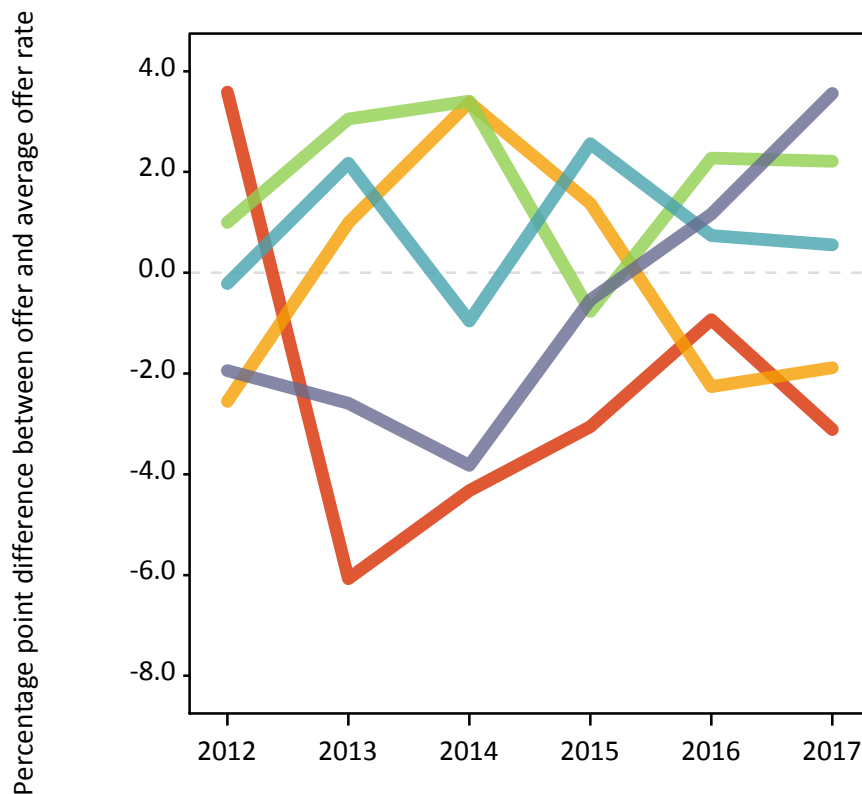
- Quintile 1
- Quintile 2
- Quintile 3
- Quintile 4
- Quintile 5



P.10 Percentage point difference between 18 year old offer rate and average offer rate by POLAR3 quintile

Note: The line for a group is not plotted when that group made fewer than 50 applications in any of the years from 2012-2017.

- Quintile 1
- Quintile 2
- Quintile 3
- Quintile 4
- Quintile 5



P.11 18 year old applicants by ethnic group

Statistic	Ethnic group	2012	2013	2014	2015	2016	2017
June deadline applicants	Asian	10	10	10	15	10	10
	Black	5	0	10	15	10	5
	Mixed	20	5	20	20	15	10
	White	1,055	920	900	945	800	725
	Other	0	0	0	0	0	0
Placed June deadline applicants	Asian	0	0	5	0	0	0
	Black	0	0	0	0	5	0
	Mixed	5	0	5	5	0	0
	White	235	265	290	275	245	240
	Other	0	0	0	0	0	0
All placed applicants	Asian	0	0	5	0	0	0
	Black	0	0	0	5	5	0
	Mixed	10	0	5	5	5	0
	White	285	295	315	310	265	265
	Other	0	0	0	0	0	0
June deadline applicants per 10,000 population	Asian	1.9	1.5	1.8	2.1	1.5	1.1
	Black	1.1	0.0	2.6	5.0	3.8	2.2
	Mixed	7.7	2.6	6.6	6.8	4.8	3.1
	White	16.3	14.6	14.6	15.2	13.2	12.2
	Other	0.0	0.0	0.0	0.0	0.0	0.0
Placed June deadline applicants per 10,000 population	Asian	0.0	0.0	0.4	0.0	0.0	0.0
	Black	0.0	0.0	0.0	0.0	1.0	0.0
	Mixed	2.7	0.0	1.0	1.9	0.0	0.0
	White	3.6	4.2	4.7	4.4	4.1	4.1
	Other	0.0	0.0	0.0	0.0	0.0	0.0
All placed applicants per 10,000 population	Asian	0.0	0.0	0.4	0.0	0.0	0.0
	Black	0.0	0.0	0.0	1.3	1.0	0.0
	Mixed	3.8	0.0	1.0	1.9	1.0	0.0
	White	4.4	4.7	5.1	5.0	4.4	4.5
	Other	0.0	0.0	0.0	0.0	0.0	0.0

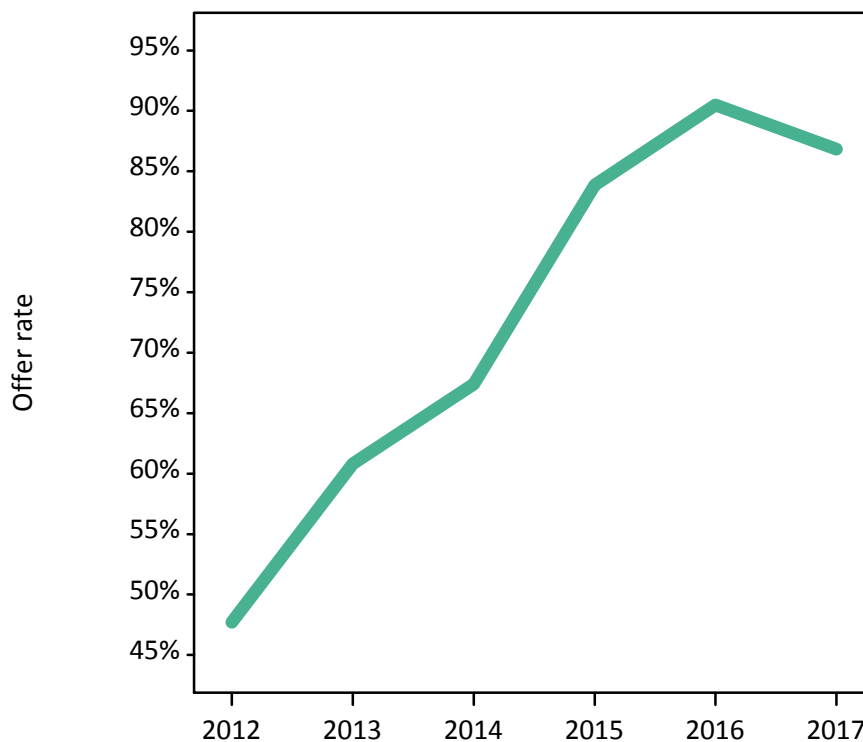
P.12 18 year old applications by ethnic group

Statistic	Ethnic group	2012	2013	2014	2015	2016	2017
June deadline applications	Asian	10	10	10	15	10	10
	Black	5	0	10	15	10	10
	Mixed	20	5	20	25	15	10
	White	1,135	1,040	1,005	1,080	905	790
	Other	0	0	0	0	0	0
Offers	Asian	5	5	10	10	10	5
	Black	0	0	5	15	10	5
	Mixed	10	5	10	20	15	10
	White	540	635	680	905	820	685
	Other	0	0	0	0	0	0
Offer rate	Asian	0.0%	0.0%	100.0%	70.6%	100.0%	N/A
	Black	N/A	N/A	N/A	100.0%	100.0%	N/A
	Mixed	47.6%	N/A	57.9%	100.0%	100.0%	100.0%
	White	47.7%	60.8%	67.4%	83.9%	90.5%	86.8%
	Other	N/A	N/A	N/A	N/A	N/A	N/A
Average offer rate	Asian	51.9%	46.5%	66.9%	77.6%	87.5%	N/A
	Black	N/A	N/A	N/A	91.1%	91.5%	N/A
	Mixed	42.2%	N/A	67.5%	91.1%	96.5%	86.7%
	White	47.6%	60.6%	67.2%	83.6%	90.2%	86.8%
	Other	N/A	N/A	N/A	N/A	N/A	N/A
Percentage point difference between offer rate and average offer rate	Asian	N/A	N/A	N/A	N/A	N/A	N/A
	Black	N/A	N/A	N/A	N/A	N/A	N/A
	Mixed	N/A	N/A	N/A	N/A	N/A	N/A
	White	0.1	0.2	0.2	0.2	0.3	-0.0
	Other	N/A	N/A	N/A	N/A	N/A	N/A
Contribution of group to the average offer rate	Asian	0.052	0.137	0.138	0.123	0.187	N/A
	Black	N/A	N/A	N/A	0.284	0.234	N/A
	Mixed	0.125	N/A	0.236	0.179	0.321	0.318
	White	0.969	0.981	0.967	0.957	0.965	0.977
	Other	N/A	N/A	N/A	N/A	N/A	N/A

P.13 18 year old offer rate by ethnic group

Note: The line for a group is not plotted when that group made fewer than 10 applications in any of the years from 2012-2017.

- Asian
- Black
- Mixed
- White
- Other



P.14 Percentage point difference between 18 year old offer rate and average offer rate by ethnic group

Note: The line for a group is not plotted when that group made fewer than 50 applications in any of the years from 2012-2017.

- Asian
- Black
- Mixed
- White
- Other



P.15 Applicants (all ages)

Statistic	2012	2013	2014	2015	2016	2017
June deadline applicants	1,825	1,605	1,660	1,760	1,520	1,370
Placed June deadline applicants	495	540	645	670	585	590
All placed applicants	610	640	725	825	690	700

P.16 Applications (all ages)

Statistic	2012	2013	2014	2015	2016	2017
June deadline applications	2,080	1,885	1,945	2,055	1,800	1,580
Offers	1,035	1,090	1,255	1,660	1,500	1,320
Offer rate	49.6%	57.9%	64.6%	80.9%	83.5%	83.3%

P.17 Applicants (all ages) by sex

Statistic	Sex	2012	2013	2014	2015	2016	2017
June deadline applicants	Men	380	305	310	330	300	270
	Women	1,445	1,300	1,350	1,430	1,220	1,105
Placed June deadline applicants	Men	95	110	110	105	110	100
	Women	395	425	530	570	475	485
All placed applicants	Men	135	135	130	125	125	125
	Women	480	505	595	695	565	575

P.18 Applications (all ages) by sex

Statistic	Sex	2012	2013	2014	2015	2016	2017
June deadline applications	Men	430	365	365	375	340	295
	Women	1,650	1,520	1,580	1,680	1,460	1,285
Offers	Men	195	200	225	305	280	255
	Women	835	895	1,030	1,355	1,220	1,065
Offer rate	Men	45.7%	54.5%	61.7%	82.1%	82.7%	86.4%
	Women	50.6%	58.7%	65.3%	80.6%	83.7%	82.6%

P.19 Applicants (all ages) by POLAR3 quintile

Statistic	POLAR3 quintile	2012	2013	2014	2015	2016	2017
June deadline applicants	Quintile 1	370	290	325	380	335	290
	Quintile 2	410	360	345	360	385	325
	Quintile 3	400	375	410	405	350	310
	Quintile 4	365	360	365	385	265	260
	Quintile 5	285	225	215	220	175	180
Placed June deadline applicants	Quintile 1	110	95	120	140	130	130
	Quintile 2	115	135	140	140	155	135
	Quintile 3	115	135	170	175	130	140
	Quintile 4	95	110	145	145	115	115
	Quintile 5	55	65	65	65	50	60
All placed applicants	Quintile 1	130	110	140	175	150	160
	Quintile 2	140	160	155	180	165	165
	Quintile 3	145	150	195	205	170	160
	Quintile 4	125	140	165	180	140	135
	Quintile 5	75	80	75	80	60	75

P.20 Applications (all ages) by POLAR3 quintile

Statistic	POLAR3 quintile	2012	2013	2014	2015	2016	2017
June deadline applications	Quintile 1	415	345	370	450	400	340
	Quintile 2	470	425	410	420	470	360
	Quintile 3	455	445	485	500	410	370
	Quintile 4	415	420	440	445	310	300
	Quintile 5	325	250	235	230	200	200
Offers	Quintile 1	225	190	225	355	330	270
	Quintile 2	220	250	280	335	380	290
	Quintile 3	235	285	310	415	355	315
	Quintile 4	210	230	295	365	265	255
	Quintile 5	145	140	145	185	170	180
Offer rate	Quintile 1	53.8%	54.8%	61.0%	79.7%	82.6%	79.5%
	Quintile 2	47.3%	58.5%	68.1%	79.6%	80.5%	80.1%
	Quintile 3	51.4%	63.6%	63.7%	82.6%	85.9%	85.4%
	Quintile 4	50.4%	55.1%	67.3%	81.9%	84.6%	84.4%
	Quintile 5	44.6%	55.6%	61.2%	79.2%	85.4%	89.5%

P.21 Applicants (all ages) by ethnic group

Statistic	Ethnic group	2012	2013	2014	2015	2016	2017
June deadline applicants	Asian	35	25	25	30	20	15
	Black	5	10	15	30	20	10
	Mixed	30	20	25	30	30	15
	White	1,740	1,540	1,590	1,665	1,435	1,325
	Other	5	0	5	5	5	0
Placed June deadline applicants	Asian	0	5	10	5	0	0
	Black	0	0	5	5	5	5
	Mixed	10	5	5	10	10	0
	White	475	525	625	645	570	580
	Other	0	0	5	0	0	0
All placed applicants	Asian	5	5	10	10	5	0
	Black	0	0	5	5	5	5
	Mixed	15	5	5	15	10	5
	White	585	625	700	790	665	690
	Other	0	0	5	0	0	0

P.22 Applications (all ages) by ethnic group

Statistic	Ethnic group	2012	2013	2014	2015	2016	2017
June deadline applications	Asian	40	30	30	40	25	20
	Black	5	10	15	30	25	10
	Mixed	35	20	25	40	35	15
	White	1,985	1,820	1,865	1,940	1,710	1,530
	Other	5	0	5	5	5	5
Offers	Asian	10	10	15	25	15	15
	Black	0	5	5	20	20	10
	Mixed	15	10	15	40	30	10
	White	995	1,065	1,210	1,570	1,430	1,275
	Other	0	0	5	5	5	5
Offer rate	Asian	28.6%	36.7%	50.0%	68.4%	73.9%	100.0%
	Black	N/A	0.0%	37.5%	78.6%	75.0%	100.0%
	Mixed	48.5%	45.0%	59.3%	100.0%	100.0%	68.8%
	White	50.2%	58.6%	65.0%	80.9%	83.6%	83.3%
	Other	N/A	N/A	N/A	N/A	N/A	N/A

Technical Notes and Definitions

UCAS undergraduate scheme

Adjustment

Adjustment allows applicants who have met and exceeded the terms of their conditional firm offer to seek and find a place at another provider whilst keeping their place at their original firm choice provider.

Clearing

Clearing is a route for applicants that are not placed and holding no offers to find a place on courses with vacancies.

Cycle year

The UCAS application cycle which runs from September to October the following year. For example the 2017 cycle runs from September 2016 through to October 2017.

End of cycle

The point in the cycle to which the numbers in this report refer, and the point at which the cycle is closed such that no more applications or offers can be made, and no more applicants can be placed. Numbers reported at the end of cycle exclude information on a small number of applicants who cancelled during the cycle.

Extra

Applicants who are unsuccessful in obtaining an offer or decline all offers may be eligible to apply through Extra, where they can apply to one further course at a time. Extra operates from 25 February until early July. It provides applicants who are eligible the possibility of obtaining an offer before exam results are published and Clearing starts.

June 30 deadline

The deadline for main scheme applications. Applicants who apply after this date will go directly into Clearing.

Record of Prior Acceptance (RPA)

RPA is an acceptance route used when a provider informs UCAS of applicants it has accepted outside of the normal application process (e.g. individuals who have applied directly to the provider).

Reporting groups

Ethnic group

High level grouping of ethnic origin as declared by the applicant: 'White', 'Black', 'Asian', 'Mixed', 'Other', 'Unknown'. Applicants who declare themselves as 'Unknown' ethnic origin are not reported in these tables, but are included in the associated csv data file.

POLAR3 quintile

Developed by HEFCE, POLAR3 classifies small areas across the UK into five groups according to their level of young participation in Higher Education. Each of these groups represents around 20 per cent of young people and is ranked from Quintile 1 (areas with the lowest young participation rates, considered as the most disadvantaged) to Quintile 5 (highest young participation rates, considered most advantaged). POLAR3 is based on the participation rates of young people between 2005 and 2009 who entered Higher Education between 2005-06 and 2010-11, therefore is most suitable for applicants aged 19 and under. These groups are assigned using the postcode declared by the applicant at the time of their application. If a UK postcode is invalid, considered unsafe for measurement or there is no link to Census geography possible then the applicant is not assigned to a quintile. Applicants with no POLAR3 quintile are not reported.

Sex

Sex as declared by the applicant.

SIMD 2016 quintile

Scottish index of multiple deprivation (SIMD) identifies small area concentrations of multiple deprivation across all of Scotland, providing a relative measure of deprivation amongst 6505 small areas (data zones) based on 7 socio-economic domains. These small areas are classified into five groups ranked from Quintile 1 (considered the most deprived) to Quintile 5 (considered least deprived), with equal populations in each quintile. Quintiles are assigned using the postcode declared by the applicant, applicants declaring invalid postcodes are classified as 'Not assigned' and are not reported.

SIMD is only defined for applicants domiciled in Scotland, therefore any applicants domiciled outside of Scotland cannot be assigned to an SIMD quintile and so are not reported for this measure.

SIMD is only reported for providers in Scotland. Application and entry rates by SIMD are reported in the 2017 End of Cycle Report and the 2017 cycle January deadline application rate report.

Statistics reported in the tables

All placed applicants

The number of applicants placed for entry into higher education at the provider through one of their choices, including any choices made through Extra, or via Adjustment, Clearing or RPA.

All placed applicants per 10,000 population

The number of total UK domiciled 18 year old placed applicants for entry into higher education at the provider divided by the number of UK 18 year olds in the population, multiplied by 10,000. This gives the number of 18 year olds, for every 10,000 in the population, that were placed at the provider through one of their choices, including any choices made through Extra, or via Adjustment, Clearing or RPA. It is an alternative way of expressing the entry rate to a provider. By referencing the underlying population this statistic shows how the number of placed applicants is changing in relation to the available pool of potential applicants and so gives the chance that somebody from the group will be placed at a provider.

This statistic is only reported for 18 year olds.

Average offer rate

The offer rate that you might expect if the predicted grades and subject choice of applicants were the only factors that influenced whether an applicant was made an offer by the provider. The average offer rate is calculated by dividing applicants according to their specific combination of grades (for A levels the best three predicted grades are used, for BTECs, International Baccalaureate and Scottish Highers and Advanced Highers, predicted grades along with any grades already achieved upon applying are used) and subject choice. For each combination the number of main scheme offers is divided by the number of main scheme applications, to give an overall offer rate. This is then multiplied by the number of applications made by the group for which the average offer rate is being calculated (for example POLAR3 quintile 1), to give an average number of offers for that group. These average number of offers are then added together across all combinations of predicted grade and subject and divided by the number of main scheme applications from the group to give the average offer rate.

The average offer rate does not attempt to control for any other factors that may play a part in the decision to make an offer, such as the subject of the qualifications studied, their relevance to a course, or the grade in each subject; higher numbers of A levels being studied; the exact profile of grades predicted; personal statements; teacher references; interviews; or any other criteria (such as work experience or portfolios) that may be part of the admissions decision.

This statistic is only reported for 18 year olds.

Contribution of group to the average offer rate

The way in which the average offer rate is defined means that the pattern of application and offers of a group (for example POLAR3 quintile 1) will always contribute, in part, to the average offer rate for that group. When this contribution is large, the average offer rate will mainly reflect the patterns for the group, meaning that the value of the average offer rate will be similar to the offer rate, the percentage point difference statistic will be small, and any real difference between the offer rate and what might be expected given the predicted grades and subject choices of the applicants will be difficult to detect.

Values of the contribution of group to the average offer rate range between 0 and 1. The closer the value is to 1 the greater the contribution a group makes to its own average offer rate.

This statistic is only reported for 18 year olds.

Placed June deadline applicants

An applicant who has been placed for entry into higher education at the provider through a June deadline application.

Placed June deadline applicants per 10,000 population

The number of UK domiciled 18 year old placed June deadline applicants at the provider divided by the number of UK 18 year olds in the population, multiplied by 10,000. This gives the number of 18 year olds, for every 10,000 in the population, that were placed at the provider through one of their June deadline applications. It is an alternative way of expressing the entry rate to a provider, but for placed June deadline applicants only. By referencing the underlying population this statistic shows how the number of placed June deadline applicants is changing in relation to the available pool of potential 18 year old applicants and so gives the chance that somebody from the group will be placed at a provider through a June deadline application.

This statistic is only reported for 18 year olds.

June deadline applications

An application (or choice) to a course in higher education to the provider that is made by the June 30 deadline. Each applicant can make up to five choices this way. The number of June deadline applications does not include choices made through the following routes: Clearing, Extra, Adjustment and RPAs. Applications made to October deadline courses received after the October deadline are not included in these statistics.

June deadline applicants

The number of applicants that made at least one application to the provider by the June 30 deadline.

June deadline applicants per 10,000 population

The number of UK domiciled 18 year old June deadline applicants to the provider divided by the number of UK 18 year olds in the population, multiplied by 10,000. This gives the number of 18 year olds, for every 10,000 in the population, who applied by the June 30 deadline. It is equivalent to the application rate. By referencing the underlying population this statistic shows how the number of June deadline applicants is changing in relation to the available pool of potential 18 year old applicants and so gives the chance that somebody from the group will apply to a provider by the June 30 deadline.

This statistic is only reported for 18 year olds.

Offers

An offer is defined as a provider's decision in response to an application to offer a place to an applicant, often subject to the applicant satisfying academic and/or other criteria, via a June deadline application (i.e. does not cover choices made through the following routes: Clearing, Extra, Adjustment and RPAs).

Offer rate

The number of offers made divided by the number of June deadline applications. This gives the proportion of all June deadline applications to the provider that received an offer.

Percentage point difference between offer rate and average offer rate

The offer rate minus the average offer rate.

The percentage point difference can be compared to the expected range of statistical variation resulting from the calculation of the average offer rate using the Average Offer Rate Lookup Table. Where the value of the percentage point difference lies outside of this range, the percentage point difference may be considered to represent a real difference between the offer rate and the average offer rate.

Other definitions

Age

This analysis uses country-specific age definitions that align with the cut off points for school and college cohorts within the different administrations of the UK. For England and Wales, ages are defined on the 31 August, for Northern Ireland on the 1 July and for Scotland on the 28 February the following year. Defining ages in this way matches the assignment of children to school cohorts. For applicants outside of the UK a cohort cut off of 31 August has been used. Numbers for applicants aged 17 and under are included in the tables that report numbers for all age groups. Providers in Scotland typically receive a higher proportion of applicants aged 17 and under compared to providers elsewhere in the UK.

Provider

A higher education provider - a university or college.

UK domiciled

Declared area of permanent residence within England, Northern Ireland, Scotland and Wales. Applicants from the Channel Islands and Isle of Man are not included.