

## Northern Irish providers

**Cycle years:** 2012 - 2017

**Cycle Reference Point:** End of Cycle

**Applicant coverage:** UK domiciled

**Reporting groups:** Sex, POLAR3, ethnic group

**Applicant statistics:** June deadline applicants, placed June deadline applicants, all placed applicants, June deadline applicants per 10,000 population, placed June deadline applicants per 10,000 population, all placed applicants per 10,000 population

**Application statistics:** June deadline applications, offers, offer rate, average offer rate, percentage point difference between offer rate and average offer rate, contribution of group to the average offer rate

**Non-disclosure controls:** To avoid the disclosure of information about any individual the following measures are taken

- Applicants, placed applicants, applications and offers are rounded to the nearest 5.
- Applicants/placed applicants per 10,000 population figures are reported as 0 if the applicant/placed applicant figures are rounded to 0.
- All statistics related to the offer rate are not reported when the number of applications for a group is less than 10. The percentage point difference between the offer rate and the average offer rate is not reported when the number of applications for a group is less than 50.
- Offer rates are reported as 0% if there are fewer than 5 offers, and 100% if the number of offers is within 5 of the number of applications. When the offer rate is reported as 0% or 100%, it is reported in italics.

### Contents:

18 year old applicants:	P.1
18 year old applications:	P.2
18 year old applicants by sex:	P.3
18 year old applications by sex:	P.4
18 year old applicants by POLAR3 quintile:	P.7
18 year old applications by POLAR3 quintile:	P.8
18 year old applicants by ethnic group:	P.11
18 year old applications by ethnic group:	P.12
Applicants (all ages):	P.15
Applications (all ages):	P.16
Applicants (all ages) by sex:	P.17
Applications (all ages) by sex:	P.18
Applicants (all ages) by POLAR3 quintile:	P.19
Applications (all ages) by POLAR3 quintile:	P.20
Applicants (all ages) by ethnic group:	P.21
Applications (all ages) by ethnic group:	P.22

## P.1 18 year old applicants

Statistic	2012	2013	2014	2015	2016	2017
June deadline applicants	12,060	11,980	12,080	12,540	12,205	11,970
Placed June deadline applicants	5,595	5,805	5,575	5,080	5,130	4,850
All placed applicants	5,975	6,195	5,960	5,340	5,510	5,375
June deadline applicants per 10,000 population	155.9	157.4	160.4	163.7	162.8	161.6
Placed June deadline applicants per 10,000	72.3	76.3	74.0	66.3	68.5	65.5
All placed applicants per 10,000 population	77.2	81.4	79.1	69.7	73.5	72.5

## P.2 18 year old applications

Statistic	2012	2013	2014	2015	2016	2017
June deadline applications	34,990	34,330	34,645	35,895	33,765	33,140
Offers	28,245	28,570	29,375	30,105	28,035	27,375
Offer rate	80.7%	83.2%	84.8%	83.9%	83.0%	82.6%

### P.3 18 year old applicants by sex

Statistic	Sex	2012	2013	2014	2015	2016	2017
June deadline applicants	Men	5,260	5,310	5,355	5,420	5,320	5,185
	Women	6,805	6,665	6,730	7,120	6,885	6,785
Placed June deadline applicants	Men	2,550	2,740	2,575	2,275	2,395	2,150
	Women	3,045	3,065	3,000	2,800	2,735	2,700
All placed applicants	Men	2,720	2,890	2,745	2,375	2,545	2,355
	Women	3,250	3,300	3,215	2,960	2,965	3,020
June deadline applicants per 10,000 population	Men	132.6	136.1	138.3	138.1	138.5	136.5
	Women	180.5	179.9	183.8	190.6	188.4	188.0
Placed June deadline applicants per 10,000 population	Men	64.2	70.2	66.5	58.0	62.4	56.6
	Women	80.8	82.8	82.0	75.0	74.9	74.8
All placed applicants per 10,000 population	Men	68.6	74.1	71.0	60.6	66.3	62.1
	Women	86.3	89.1	87.8	79.2	81.2	83.6

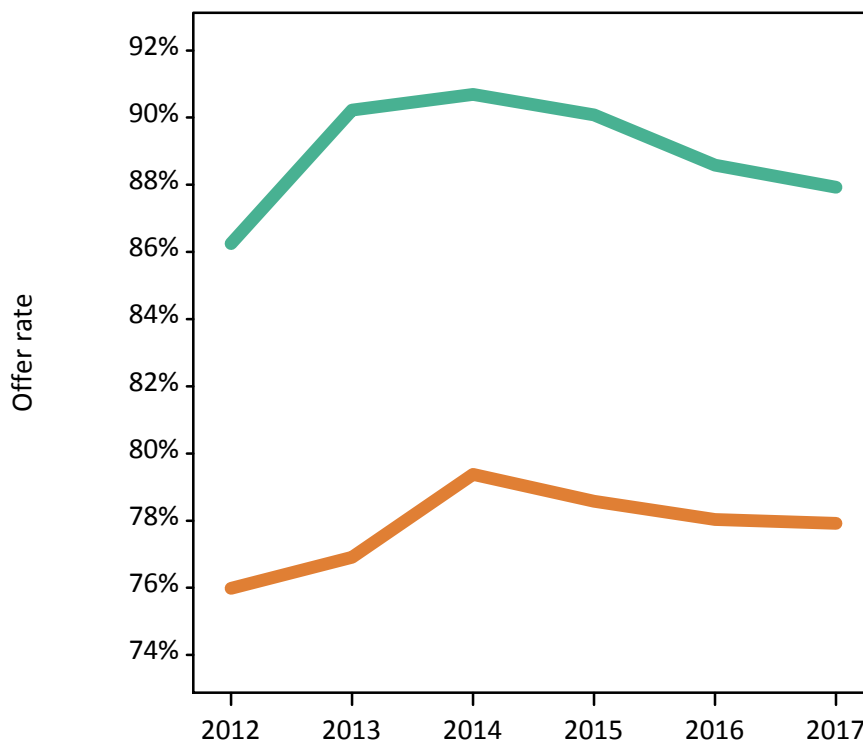
### P.4 18 year old applications by sex

Statistic	Sex	2012	2013	2014	2015	2016	2017
June deadline applications	Men	16,145	16,260	16,570	16,495	16,000	15,520
	Women	18,850	18,070	18,075	19,400	17,765	17,615
Offers	Men	13,925	14,670	15,030	14,860	14,170	13,645
	Women	14,320	13,900	14,345	15,245	13,865	13,725
Offer rate	Men	86.3%	90.2%	90.7%	90.1%	88.6%	87.9%
	Women	76.0%	76.9%	79.4%	78.6%	78.0%	77.9%
Average offer rate	Men	86.7%	90.6%	91.1%	90.4%	89.2%	88.1%
	Women	75.6%	76.6%	79.0%	78.3%	77.4%	77.7%
Percentage point difference between offer rate and average offer rate	Men	-0.4	-0.4	-0.4	-0.3	-0.7	-0.2
	Women	0.4	0.3	0.3	0.2	0.6	0.2
Contribution of group to the average offer rate	Men	0.623	0.643	0.639	0.621	0.633	0.631
	Women	0.677	0.679	0.669	0.678	0.670	0.675

### P.5 18 year old offer rate by sex

Note: The line for a group is not plotted when that group made fewer than 10 applications in any of the years from 2012-2017.

Men  
Women



### P.6 Percentage point difference between 18 year old offer rate and average offer rate by sex

Note: The line for a group is not plotted when that group made fewer than 50 applications in any of the years from 2012-2017.

Men  
Women



## P.7 18 year old applicants by POLAR3 quintile

Statistic	POLAR3 quintile	2012	2013	2014	2015	2016	2017
June deadline applicants	Quintile 1	810	800	860	905	865	875
	Quintile 2	1,215	1,170	1,285	1,295	1,345	1,280
	Quintile 3	1,890	1,920	1,925	2,005	2,060	1,865
	Quintile 4	3,505	3,465	3,535	3,660	3,550	3,600
	Quintile 5	4,620	4,595	4,460	4,655	4,360	4,330
Placed June deadline applicants	Quintile 1	325	340	360	295	325	310
	Quintile 2	505	560	550	475	530	475
	Quintile 3	890	925	895	840	820	780
	Quintile 4	1,700	1,760	1,700	1,560	1,595	1,525
	Quintile 5	2,170	2,205	2,060	1,905	1,850	1,745
All placed applicants	Quintile 1	345	365	380	310	345	350
	Quintile 2	545	595	595	495	575	530
	Quintile 3	955	985	950	890	895	855
	Quintile 4	1,815	1,880	1,825	1,635	1,705	1,700
	Quintile 5	2,305	2,360	2,200	1,995	1,975	1,930
June deadline applicants per 10,000 population	Quintile 1	56.8	57.3	61.8	64.7	64.0	65.6
	Quintile 2	81.1	79.5	87.8	87.3	92.9	90.1
	Quintile 3	122.5	126.0	127.9	130.5	137.1	125.1
	Quintile 4	221.0	221.7	229.3	233.8	230.0	235.6
	Quintile 5	274.9	277.8	273.5	278.1	264.0	263.7
Placed June deadline applicants per 10,000 population	Quintile 1	22.8	24.3	25.9	21.0	24.0	23.5
	Quintile 2	33.7	37.9	37.5	32.0	36.6	33.5
	Quintile 3	57.6	60.8	59.4	54.6	54.7	52.4
	Quintile 4	107.0	112.7	110.4	99.5	103.4	100.0
	Quintile 5	129.2	133.4	126.4	113.9	112.0	106.3
All placed applicants per 10,000 population	Quintile 1	24.1	26.3	27.5	22.1	25.6	26.2
	Quintile 2	36.2	40.2	40.6	33.4	39.9	37.2
	Quintile 3	61.9	64.5	63.2	58.1	59.6	57.5
	Quintile 4	114.5	120.1	118.4	104.5	110.5	111.2
	Quintile 5	137.3	142.6	134.8	119.3	119.7	117.6

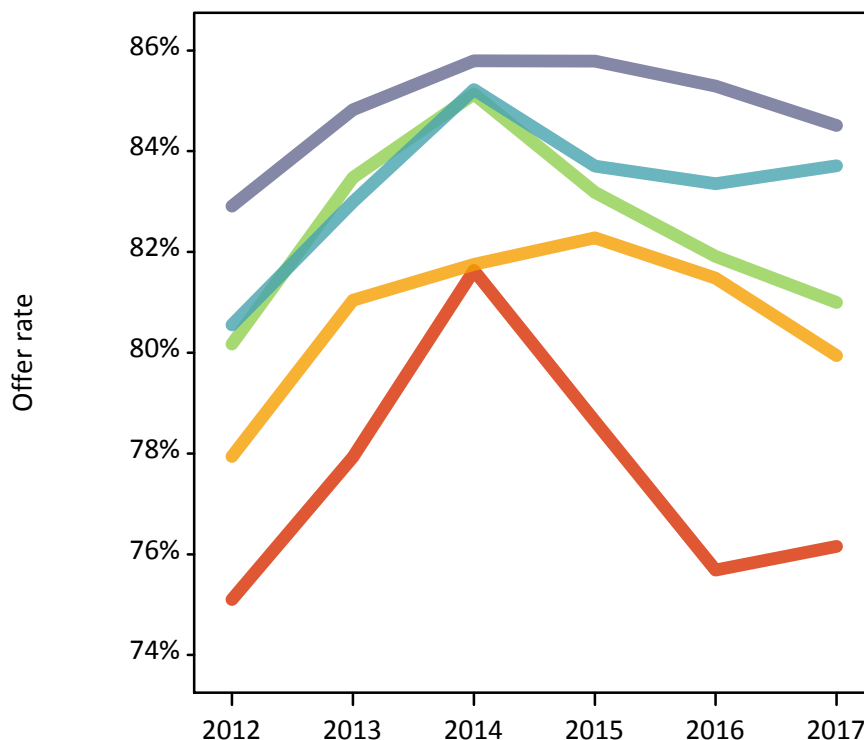
## P.8 18 year old applications by POLAR3 quintile

Statistic	POLAR3 quintile	2012	2013	2014	2015	2016	2017
June deadline applications	Quintile 1	2,445	2,390	2,460	2,650	2,410	2,430
	Quintile 2	3,450	3,380	3,605	3,645	3,630	3,445
	Quintile 3	5,660	5,600	5,545	5,920	5,785	5,300
	Quintile 4	10,425	10,220	10,410	10,630	10,130	10,270
	Quintile 5	12,960	12,670	12,565	12,995	11,750	11,620
Offers	Quintile 1	1,835	1,860	2,010	2,085	1,825	1,850
	Quintile 2	2,690	2,740	2,950	3,000	2,955	2,755
	Quintile 3	4,535	4,675	4,720	4,925	4,735	4,295
	Quintile 4	8,395	8,480	8,870	8,895	8,445	8,595
	Quintile 5	10,745	10,745	10,780	11,150	10,020	9,820
Offer rate	Quintile 1	75.1%	77.9%	81.6%	78.6%	75.7%	76.2%
	Quintile 2	77.9%	81.0%	81.8%	82.3%	81.5%	79.9%
	Quintile 3	80.2%	83.5%	85.1%	83.2%	81.9%	81.0%
	Quintile 4	80.6%	83.0%	85.2%	83.7%	83.4%	83.7%
	Quintile 5	82.9%	84.8%	85.8%	85.8%	85.3%	84.5%
Average offer rate	Quintile 1	77.4%	80.4%	83.6%	81.9%	78.9%	78.9%
	Quintile 2	78.7%	82.0%	82.8%	82.6%	81.9%	80.8%
	Quintile 3	80.4%	83.3%	85.2%	83.8%	82.7%	81.6%
	Quintile 4	80.1%	83.0%	84.6%	83.5%	82.9%	82.9%
	Quintile 5	82.5%	84.1%	85.6%	84.9%	84.5%	84.1%
Percentage point difference between offer rate and average offer rate	Quintile 1	-2.3	-2.5	-2.0	-3.2	-3.2	-2.7
	Quintile 2	-0.8	-1.0	-1.0	-0.3	-0.4	-0.9
	Quintile 3	-0.2	0.2	-0.0	-0.6	-0.8	-0.6
	Quintile 4	0.5	-0.0	0.6	0.2	0.5	0.8
	Quintile 5	0.4	0.7	0.2	0.9	0.8	0.4
Contribution of group to the average offer rate	Quintile 1	0.152	0.165	0.161	0.158	0.159	0.158
	Quintile 2	0.177	0.165	0.179	0.169	0.170	0.173
	Quintile 3	0.225	0.223	0.221	0.223	0.231	0.222
	Quintile 4	0.352	0.354	0.351	0.343	0.353	0.361
	Quintile 5	0.426	0.424	0.416	0.415	0.401	0.405

### P.9 18 year old offer rate by POLAR3 quintile

Note: The line for a group is not plotted when that group made fewer than 10 applications in any of the years from 2012-2017.

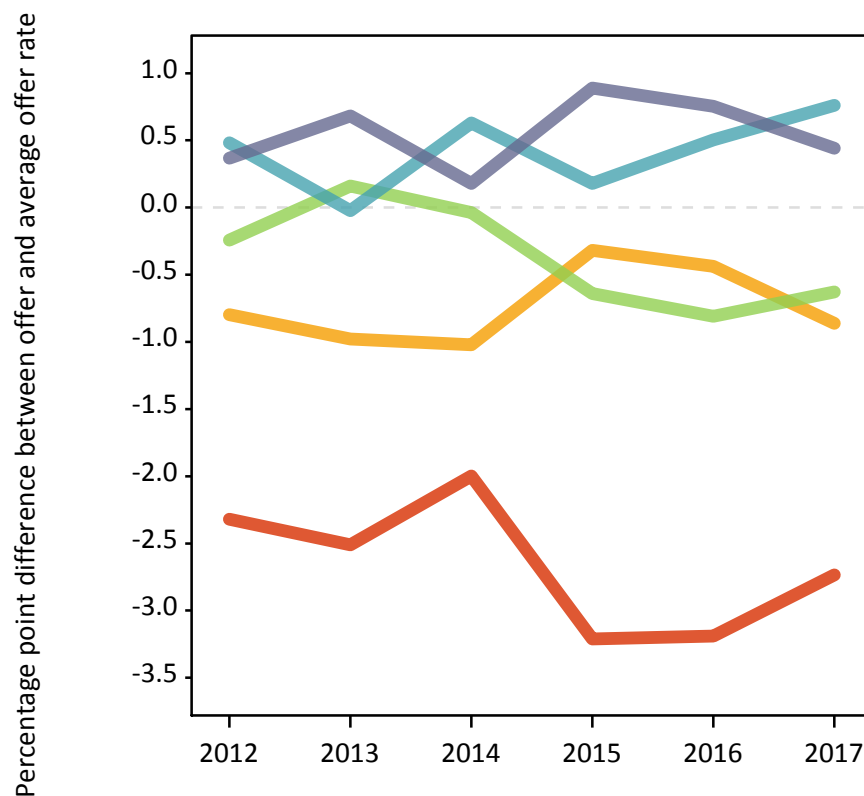
- Quintile 1
- Quintile 2
- Quintile 3
- Quintile 4
- Quintile 5



### P.10 Percentage point difference between 18 year old offer rate and average offer rate by POLAR3 quintile

Note: The line for a group is not plotted when that group made fewer than 50 applications in any of the years from 2012-2017.

- Quintile 1
- Quintile 2
- Quintile 3
- Quintile 4
- Quintile 5



## P.11 18 year old applicants by ethnic group

Statistic	Ethnic group	2012	2013	2014	2015	2016	2017
June deadline applicants	Asian	140	150	205	210	250	245
	Black	35	50	60	55	65	75
	Mixed	115	130	135	160	140	165
	White	11,720	11,605	11,630	12,045	11,685	11,400
	Other	20	20	30	30	25	35
Placed June deadline applicants	Asian	35	35	45	45	55	40
	Black	5	10	10	5	5	10
	Mixed	20	25	30	40	30	30
	White	5,515	5,730	5,490	4,975	5,025	4,755
	Other	5	5	5	5	0	5
All placed applicants	Asian	40	40	45	50	70	50
	Black	10	10	10	10	10	10
	Mixed	25	25	30	40	35	35
	White	5,885	6,110	5,865	5,230	5,390	5,260
	Other	5	5	5	5	0	5
June deadline applicants per 10,000 population	Asian	21.9	23.0	30.1	30.0	35.0	33.6
	Black	11.7	17.5	20.1	17.6	21.4	24.2
	Mixed	43.4	47.7	46.6	52.5	44.2	51.1
	White	181.5	184.4	188.5	193.4	193.2	192.1
	Other	20.3	24.3	31.2	29.0	25.1	34.0
Placed June deadline applicants per 10,000 population	Asian	5.4	5.6	6.3	6.5	7.6	5.4
	Black	2.5	2.7	2.6	1.6	1.9	2.9
	Mixed	8.4	8.9	9.7	12.6	10.2	9.0
	White	85.4	91.1	89.0	79.8	83.1	80.1
	Other	6.8	3.3	5.4	4.1	0.0	2.9
All placed applicants per 10,000 population	Asian	6.3	6.4	6.9	6.9	9.4	6.5
	Black	2.8	2.7	3.0	2.5	2.6	3.2
	Mixed	9.2	9.6	11.1	12.6	11.4	10.3
	White	91.1	97.1	95.0	83.9	89.1	88.7
	Other	6.8	3.3	6.4	4.1	0.0	3.9



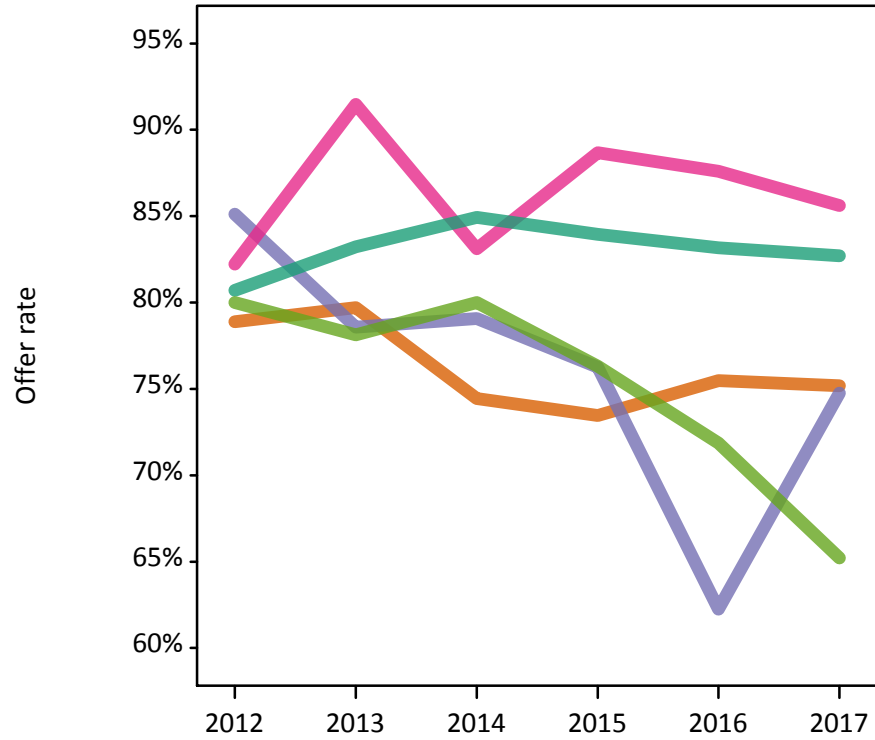
## P.12 18 year old applications by ethnic group

Statistic	Ethnic group	2012	2013	2014	2015	2016	2017
June deadline applications	Asian	250	275	355	375	415	425
	Black	45	70	85	80	100	105
	Mixed	180	210	220	255	240	280
	White	34,420	33,700	33,900	35,065	32,905	32,180
	Other	30	30	50	40	30	45
Offers	Asian	200	220	265	275	315	320
	Black	40	55	70	60	60	75
	Mixed	150	195	180	225	210	240
	White	27,780	28,050	28,795	29,435	27,370	26,615
	Other	25	25	40	30	25	30
Offer rate	Asian	78.9%	79.7%	74.4%	73.5%	75.5%	75.2%
	Black	85.1%	78.6%	79.1%	76.3%	62.2%	74.8%
	Mixed	82.2%	91.5%	83.1%	88.7%	87.6%	85.6%
	White	80.7%	83.2%	84.9%	83.9%	83.2%	82.7%
	Other	80.0%	78.1%	80.0%	76.3%	71.9%	65.2%
Average offer rate	Asian	82.2%	79.7%	79.1%	77.1%	80.1%	77.7%
	Black	77.6%	82.3%	80.0%	75.5%	68.8%	80.2%
	Mixed	84.1%	91.1%	84.8%	88.4%	86.7%	87.2%
	White	80.7%	83.2%	84.9%	83.9%	83.1%	82.6%
	Other	85.8%	88.1%	81.4%	70.1%	69.6%	72.3%
Percentage point difference between offer rate and average offer rate	Asian	-3.3	-0.0	-4.6	-3.7	-4.6	-2.6
	Black	N/A	-3.7	-1.0	0.8	-6.6	-5.4
	Mixed	-1.9	0.4	-1.7	0.2	0.9	-1.6
	White	0.0	0.0	0.1	0.0	0.1	0.1
	Other	N/A	N/A	-1.4	N/A	N/A	N/A
Contribution of group to the average offer rate	Asian	0.109	0.105	0.083	0.099	0.119	0.131
	Black	0.139	0.167	0.148	0.182	0.101	0.133
	Mixed	0.103	0.091	0.099	0.090	0.079	0.092
	White	0.985	0.984	0.981	0.979	0.978	0.975
	Other	0.082	0.089	0.070	0.086	0.118	0.090

### P.13 18 year old offer rate by ethnic group

Note: The line for a group is not plotted when that group made fewer than 10 applications in any of the years from 2012-2017.

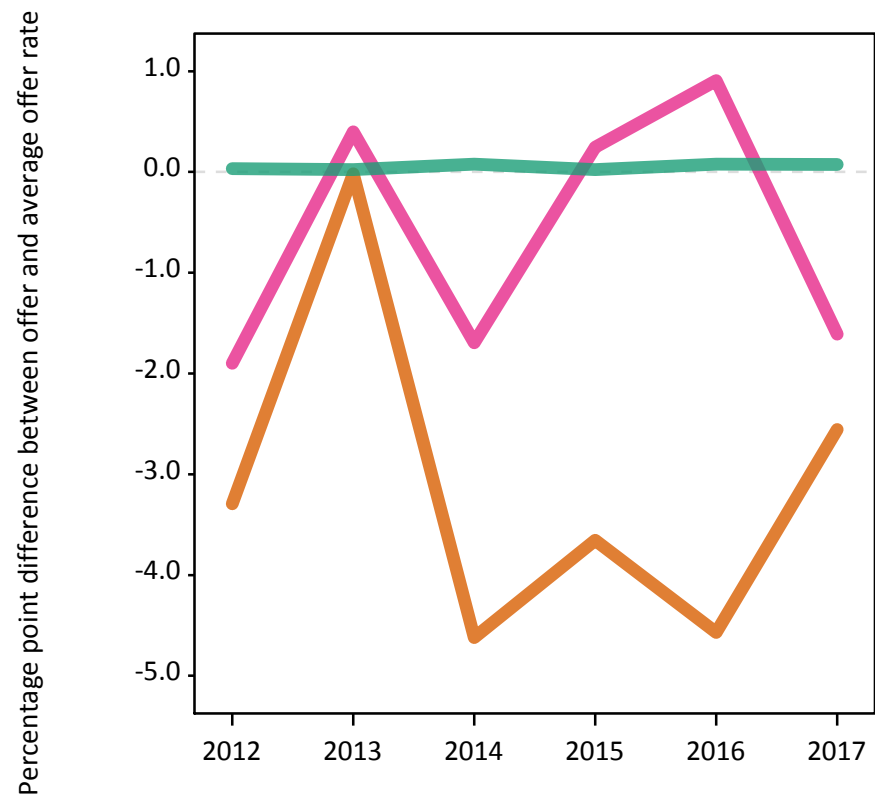
- Asian
- Black
- Mixed
- White
- Other



### P.14 Percentage point difference between 18 year old offer rate and average offer rate by ethnic group

Note: The line for a group is not plotted when that group made fewer than 50 applications in any of the years from 2012-2017.

- Asian
- Black
- Mixed
- White
- Other



### P.15 Applicants (all ages)

Statistic	2012	2013	2014	2015	2016	2017
June deadline applicants	19,235	20,465	20,880	22,010	21,370	20,485
Placed June deadline applicants	8,670	9,470	9,290	8,940	9,080	8,555
All placed applicants	9,380	10,290	10,540	9,560	9,830	9,565

### P.16 Applications (all ages)

Statistic	2012	2013	2014	2015	2016	2017
June deadline applications	53,935	56,860	58,240	60,345	58,765	56,365
Offers	39,915	41,940	43,720	45,135	43,585	41,995
Offer rate	74.0%	73.8%	75.1%	74.8%	74.2%	74.5%

### P.17 Applicants (all ages) by sex

Statistic	Sex	2012	2013	2014	2015	2016	2017
June deadline applicants	Men	8,490	8,895	9,105	9,535	9,280	8,825
	Women	10,745	11,570	11,775	12,475	12,095	11,655
Placed June deadline applicants	Men	4,040	4,475	4,355	4,075	4,245	3,785
	Women	4,630	4,995	4,935	4,865	4,830	4,770
All placed applicants	Men	4,395	4,790	4,970	4,305	4,535	4,165
	Women	4,985	5,500	5,570	5,255	5,290	5,400

### P.18 Applications (all ages) by sex

Statistic	Sex	2012	2013	2014	2015	2016	2017
June deadline applications	Men	24,860	25,935	26,820	27,285	27,220	25,620
	Women	29,075	30,930	31,420	33,060	31,545	30,745
Offers	Men	19,890	21,735	22,560	22,725	22,305	21,000
	Women	20,025	20,205	21,160	22,410	21,275	20,990
Offer rate	Men	80.0%	83.8%	84.1%	83.3%	81.9%	82.0%
	Women	68.9%	65.3%	67.3%	67.8%	67.4%	68.3%

### P.19 Applicants (all ages) by POLAR3 quintile

Statistic	POLAR3 quintile	2012	2013	2014	2015	2016	2017
June deadline applicants	Quintile 1	1,550	1,720	1,805	1,830	1,860	1,780
	Quintile 2	2,145	2,220	2,500	2,575	2,570	2,440
	Quintile 3	3,185	3,485	3,400	3,650	3,640	3,395
	Quintile 4	5,485	5,810	5,970	6,340	6,050	5,930
	Quintile 5	6,815	7,190	7,165	7,565	7,205	6,895
Placed June deadline applicants	Quintile 1	615	745	740	630	715	700
	Quintile 2	895	975	1,020	990	1,030	970
	Quintile 3	1,450	1,585	1,525	1,525	1,475	1,425
	Quintile 4	2,555	2,780	2,725	2,670	2,755	2,540
	Quintile 5	3,140	3,370	3,255	3,110	3,090	2,905
All placed applicants	Quintile 1	655	810	810	670	770	780
	Quintile 2	970	1,060	1,170	1,055	1,120	1,065
	Quintile 3	1,570	1,720	1,770	1,640	1,605	1,595
	Quintile 4	2,795	3,030	3,095	2,855	2,970	2,855
	Quintile 5	3,370	3,655	3,670	3,315	3,340	3,255

### P.20 Applications (all ages) by POLAR3 quintile

Statistic	POLAR3 quintile	2012	2013	2014	2015	2016	2017
June deadline applications	Quintile 1	4,515	5,015	5,200	5,130	5,170	4,935
	Quintile 2	5,925	6,135	6,855	6,965	6,870	6,590
	Quintile 3	9,215	9,825	9,530	10,080	10,155	9,425
	Quintile 4	15,695	16,365	16,925	17,700	17,210	16,770
	Quintile 5	18,470	19,420	19,615	20,330	19,235	18,510
Offers	Quintile 1	3,000	3,325	3,660	3,515	3,455	3,420
	Quintile 2	4,125	4,310	4,865	4,985	4,925	4,655
	Quintile 3	6,770	7,135	7,185	7,525	7,345	6,760
	Quintile 4	11,670	12,180	12,765	13,235	12,880	12,650
	Quintile 5	14,260	14,900	15,170	15,785	14,890	14,415
Offer rate	Quintile 1	66.5%	66.3%	70.4%	68.6%	66.9%	69.3%
	Quintile 2	69.7%	70.3%	71.0%	71.5%	71.7%	70.6%
	Quintile 3	73.5%	72.7%	75.4%	74.6%	72.3%	71.7%
	Quintile 4	74.4%	74.4%	75.4%	74.8%	74.9%	75.4%
	Quintile 5	77.2%	76.7%	77.3%	77.6%	77.4%	77.9%

## P.21 Applicants (all ages) by ethnic group

Statistic	Ethnic group	2012	2013	2014	2015	2016	2017
June deadline applicants	Asian	330	360	475	760	545	500
	Black	135	190	230	235	215	195
	Mixed	185	210	235	285	240	270
	White	18,480	19,585	19,810	20,510	20,225	19,350
	Other	40	70	65	95	65	85
Placed June deadline applicants	Asian	90	85	110	240	125	90
	Black	20	30	50	45	30	30
	Mixed	45	50	55	70	55	60
	White	8,490	9,285	9,045	8,530	8,830	8,330
	Other	10	15	15	20	10	15
All placed applicants	Asian	155	100	265	255	150	115
	Black	40	35	165	50	40	35
	Mixed	50	50	75	70	65	75
	White	9,090	10,075	9,965	9,090	9,520	9,290
	Other	10	15	50	20	15	15

## P.22 Applications (all ages) by ethnic group

Statistic	Ethnic group	2012	2013	2014	2015	2016	2017
June deadline applications	Asian	610	615	725	1,110	880	860
	Black	195	285	360	320	330	305
	Mixed	315	365	395	465	445	485
	White	52,635	55,385	56,535	58,090	56,830	54,400
	Other	60	110	110	130	105	120
Offers	Asian	425	425	490	695	585	555
	Black	105	155	200	150	170	150
	Mixed	230	305	300	360	345	360
	White	39,030	40,930	42,590	43,700	42,290	40,695
	Other	40	60	75	70	65	75
Offer rate	Asian	70.1%	69.2%	67.3%	62.5%	66.3%	64.8%
	Black	53.6%	55.1%	56.3%	46.7%	51.5%	48.9%
	Mixed	73.0%	84.1%	75.6%	77.8%	77.2%	74.8%
	White	74.2%	73.9%	75.3%	75.2%	74.4%	74.8%
	Other	64.5%	56.5%	67.6%	55.0%	62.5%	64.7%

## Technical Notes and Definitions

### UCAS undergraduate scheme

#### Adjustment

Adjustment allows applicants who have met and exceeded the terms of their conditional firm offer to seek and find a place at another provider whilst keeping their place at their original firm choice provider.

#### Clearing

Clearing is a route for applicants that are not placed and holding no offers to find a place on courses with vacancies.

#### Cycle year

The UCAS application cycle which runs from September to October the following year. For example the 2017 cycle runs from September 2016 through to October 2017.

#### End of cycle

The point in the cycle to which the numbers in this report refer, and the point at which the cycle is closed such that no more applications or offers can be made, and no more applicants can be placed. Numbers reported at the end of cycle exclude information on a small number of applicants who cancelled during the cycle.

#### Extra

Applicants who are unsuccessful in obtaining an offer or decline all offers may be eligible to apply through Extra, where they can apply to one further course at a time. Extra operates from 25 February until early July. It provides applicants who are eligible the possibility of obtaining an offer before exam results are published and Clearing starts.

#### June 30 deadline

The deadline for main scheme applications. Applicants who apply after this date will go directly into Clearing.

#### Record of Prior Acceptance (RPA)

RPA is an acceptance route used when a provider informs UCAS of applicants it has accepted outside of the normal application process (e.g. individuals who have applied directly to the provider).

### Reporting groups

#### Ethnic group

High level grouping of ethnic origin as declared by the applicant: 'White', 'Black', 'Asian', 'Mixed', 'Other', 'Unknown'. Applicants who declare themselves as 'Unknown' ethnic origin are not reported in these tables, but are included in the associated csv data file.

#### POLAR3 quintile

Developed by HEFCE, POLAR3 classifies small areas across the UK into five groups according to their level of young participation in Higher Education. Each of these groups represents around 20 per cent of young people and is ranked from Quintile 1 (areas with the lowest young participation rates, considered as the most disadvantaged) to Quintile 5 (highest young participation rates, considered most advantaged). POLAR3 is based on the participation rates of young people between 2005 and 2009 who entered Higher Education between 2005-06 and 2010-11, therefore is most suitable for applicants aged 19 and under. These groups are assigned using the postcode declared by the applicant at the time of their application. If a UK postcode is invalid, considered unsafe for measurement or there is no link to Census geography possible then the applicant is not assigned to a quintile. Applicants with no POLAR3 quintile are not reported.

#### Sex

Sex as declared by the applicant.

### **SIMD 2016 quintile**

Scottish index of multiple deprivation (SIMD) identifies small area concentrations of multiple deprivation across all of Scotland, providing a relative measure of deprivation amongst 6505 small areas (data zones) based on 7 socio-economic domains. These small areas are classified into five groups ranked from Quintile 1 (considered the most deprived) to Quintile 5 (considered least deprived), with equal populations in each quintile. Quintiles are assigned using the postcode declared by the applicant, applicants declaring invalid postcodes are classified as 'Not assigned' and are not reported.

SIMD is only defined for applicants domiciled in Scotland, therefore any applicants domiciled outside of Scotland cannot be assigned to an SIMD quintile and so are not reported for this measure.

SIMD is only reported for providers in Scotland. Application and entry rates by SIMD are reported in the 2017 End of Cycle Report and the 2017 cycle January deadline application rate report.

### **Statistics reported in the tables**

#### **All placed applicants**

The number of applicants placed for entry into higher education at the provider through one of their choices, including any choices made through Extra, or via Adjustment, Clearing or RPA.

#### **All placed applicants per 10,000 population**

The number of total UK domiciled 18 year old placed applicants for entry into higher education at the provider divided by the number of UK 18 year olds in the population, multiplied by 10,000. This gives the number of 18 year olds, for every 10,000 in the population, that were placed at the provider through one of their choices, including any choices made through Extra, or via Adjustment, Clearing or RPA. It is an alternative way of expressing the entry rate to a provider. By referencing the underlying population this statistic shows how the number of placed applicants is changing in relation to the available pool of potential applicants and so gives the chance that somebody from the group will be placed at a provider.

This statistic is only reported for 18 year olds.

#### **Average offer rate**

The offer rate that you might expect if the predicted grades and subject choice of applicants were the only factors that influenced whether an applicant was made an offer by the provider. The average offer rate is calculated by dividing applicants according to their specific combination of grades (for A levels the best three predicted grades are used, for BTECs, International Baccalaureate and Scottish Highers and Advanced Highers, predicted grades along with any grades already achieved upon applying are used) and subject choice. For each combination the number of main scheme offers is divided by the number of main scheme applications, to give an overall offer rate. This is then multiplied by the number of applications made by the group for which the average offer rate is being calculated (for example POLAR3 quintile 1), to give an average number of offers for that group. These average number of offers are then added together across all combinations of predicted grade and subject and divided by the number of main scheme applications from the group to give the average offer rate.

The average offer rate does not attempt to control for any other factors that may play a part in the decision to make an offer, such as the subject of the qualifications studied, their relevance to a course, or the grade in each subject; higher numbers of A levels being studied; the exact profile of grades predicted; personal statements; teacher references; interviews; or any other criteria (such as work experience or portfolios) that may be part of the admissions decision.

This statistic is only reported for 18 year olds.



### Contribution of group to the average offer rate

The way in which the average offer rate is defined means that the pattern of application and offers of a group (for example POLAR3 quintile 1) will always contribute, in part, to the average offer rate for that group. When this contribution is large, the average offer rate will mainly reflect the patterns for the group, meaning that the value of the average offer rate will be similar to the offer rate, the percentage point difference statistic will be small, and any real difference between the offer rate and what might be expected given the predicted grades and subject choices of the applicants will be difficult to detect.

Values of the contribution of group to the average offer rate range between 0 and 1. The closer the value is to 1 the greater the contribution a group makes to its own average offer rate.

This statistic is only reported for 18 year olds.

### Placed June deadline applicants

An applicant who has been placed for entry into higher education at the provider through a June deadline application.

### Placed June deadline applicants per 10,000 population

The number of UK domiciled 18 year old placed June deadline applicants at the provider divided by the number of UK 18 year olds in the population, multiplied by 10,000. This gives the number of 18 year olds, for every 10,000 in the population, that were placed at the provider through one of their June deadline applications. It is an alternative way of expressing the entry rate to a provider, but for placed June deadline applicants only. By referencing the underlying population this statistic shows how the number of placed June deadline applicants is changing in relation to the available pool of potential 18 year old applicants and so gives the chance that somebody from the group will be placed at a provider through a June deadline application.

This statistic is only reported for 18 year olds.

### June deadline applications

An application (or choice) to a course in higher education to the provider that is made by the June 30 deadline. Each applicant can make up to five choices this way. The number of June deadline applications does not include choices made through the following routes: Clearing, Extra, Adjustment and RPAs. Applications made to October deadline courses received after the October deadline are not included in these statistics.

### June deadline applicants

The number of applicants that made at least one application to the provider by the June 30 deadline.

### June deadline applicants per 10,000 population

The number of UK domiciled 18 year old June deadline applicants to the provider divided by the number of UK 18 year olds in the population, multiplied by 10,000. This gives the number of 18 year olds, for every 10,000 in the population, who applied by the June 30 deadline. It is equivalent to the application rate. By referencing the underlying population this statistic shows how the number of June deadline applicants is changing in relation to the available pool of potential 18 year old applicants and so gives the chance that somebody from the group will apply to a provider by the June 30 deadline.

This statistic is only reported for 18 year olds.

### Offers

An offer is defined as a provider's decision in response to an application to offer a place to an applicant, often subject to the applicant satisfying academic and/or other criteria, via a June deadline application (i.e. does not cover choices made through the following routes: Clearing, Extra, Adjustment and RPAs).

### Offer rate

The number of offers made divided by the number of June deadline applications. This gives the proportion of all June deadline applications to the provider that received an offer.

### Percentage point difference between offer rate and average offer rate

The offer rate minus the average offer rate.

The percentage point difference can be compared to the expected range of statistical variation resulting from the calculation of the average offer rate using the Average Offer Rate Lookup Table. Where the value of the percentage point difference lies outside of this range, the percentage point difference may be considered to represent a real difference between the offer rate and the average offer rate.

### Other definitions

#### Age

This analysis uses country-specific age definitions that align with the cut off points for school and college cohorts within the different administrations of the UK. For England and Wales, ages are defined on the 31 August, for Northern Ireland on the 1 July and for Scotland on the 28 February the following year. Defining ages in this way matches the assignment of children to school cohorts. For applicants outside of the UK a cohort cut off of 31 August has been used. Numbers for applicants aged 17 and under are included in the tables that report numbers for all age groups. Providers in Scotland typically receive a higher proportion of applicants aged 17 and under compared to providers elsewhere in the UK.

#### Provider

A higher education provider - a university or college.

#### UK domiciled

Declared area of permanent residence within England, Northern Ireland, Scotland and Wales. Applicants from the Channel Islands and Isle of Man are not included.