

## English providers

**Cycle years:** 2012 - 2017

**Cycle Reference Point:** End of Cycle

**Applicant coverage:** UK domiciled

**Reporting groups:** Sex, POLAR3, ethnic group

**Applicant statistics:** June deadline applicants, placed June deadline applicants, all placed applicants, June deadline applicants per 10,000 population, placed June deadline applicants per 10,000 population, all placed applicants per 10,000 population

**Application statistics:** June deadline applications, offers, offer rate, average offer rate, percentage point difference between offer rate and average offer rate, contribution of group to the average offer rate

**Non-disclosure controls:** To avoid the disclosure of information about any individual the following measures are taken

- Applicants, placed applicants, applications and offers are rounded to the nearest 5.
- Applicants/placed applicants per 10,000 population figures are reported as 0 if the applicant/placed applicant figures are rounded to 0.
- All statistics related to the offer rate are not reported when the number of applications for a group is less than 10. The percentage point difference between the offer rate and the average offer rate is not reported when the number of applications for a group is less than 50.
- Offer rates are reported as 0% if there are fewer than 5 offers, and 100% if the number of offers is within 5 of the number of applications. When the offer rate is reported as 0% or 100%, it is reported in italics.

## Contents:

18 year old applicants:	P.1
18 year old applications:	P.2
18 year old applicants by sex:	P.3
18 year old applications by sex:	P.4
18 year old applicants by POLAR3 quintile:	P.7
18 year old applications by POLAR3 quintile:	P.8
18 year old applicants by ethnic group:	P.11
18 year old applications by ethnic group:	P.12
Applicants (all ages):	P.15
Applications (all ages):	P.16
Applicants (all ages) by sex:	P.17
Applications (all ages) by sex:	P.18
Applicants (all ages) by POLAR3 quintile:	P.19
Applications (all ages) by POLAR3 quintile:	P.20
Applicants (all ages) by ethnic group:	P.21
Applications (all ages) by ethnic group:	P.22

## P.1 18 year old applicants

Statistic	2012	2013	2014	2015	2016	2017
June deadline applicants	232,260	234,665	241,170	250,920	253,490	254,545
Placed June deadline applicants	152,875	159,895	163,030	172,430	174,005	174,840
All placed applicants	176,845	183,635	188,875	200,055	202,590	205,310
June deadline applicants per 10,000 population	3,002.7	3,083.7	3,202.1	3,275.1	3,381.9	3,435.7
Placed June deadline applicants per 10,000	1,976.4	2,101.2	2,164.6	2,250.6	2,321.4	2,359.9
All placed applicants per 10,000 population	2,286.3	2,413.1	2,507.8	2,611.2	2,702.8	2,771.1

## P.2 18 year old applications

Statistic	2012	2013	2014	2015	2016	2017
June deadline applications	1,009,115	1,011,260	1,043,275	1,088,590	1,100,970	1,104,270
Offers	719,595	762,820	799,405	843,525	860,280	876,365
Offer rate	71.3%	75.4%	76.6%	77.5%	78.1%	79.4%

### P.3 18 year old applicants by sex

Statistic	Sex	2012	2013	2014	2015	2016	2017
June deadline applicants	Men	102,180	103,560	106,605	109,150	110,385	111,335
	Women	130,080	131,105	134,560	141,765	143,105	143,210
Placed June deadline applicants	Men	67,935	71,415	72,675	75,505	76,295	76,365
	Women	84,935	88,480	90,355	96,925	97,705	98,475
All placed applicants	Men	78,525	81,735	84,075	87,460	88,650	89,790
	Women	98,320	101,900	104,800	112,600	113,940	115,515
June deadline applicants per 10,000 population	Men	2,576.5	2,652.6	2,753.9	2,781.4	2,873.5	2,931.3
	Women	3,451.0	3,537.9	3,676.1	3,793.5	3,916.4	3,966.3
Placed June deadline applicants per 10,000 population	Men	1,713.1	1,829.2	1,877.4	1,924.0	1,986.1	2,010.6
	Women	2,253.4	2,387.7	2,468.3	2,593.5	2,673.9	2,727.3
All placed applicants per 10,000 population	Men	1,980.0	2,093.6	2,171.8	2,228.6	2,307.8	2,364.1
	Women	2,608.5	2,749.8	2,863.0	3,013.0	3,118.2	3,199.3

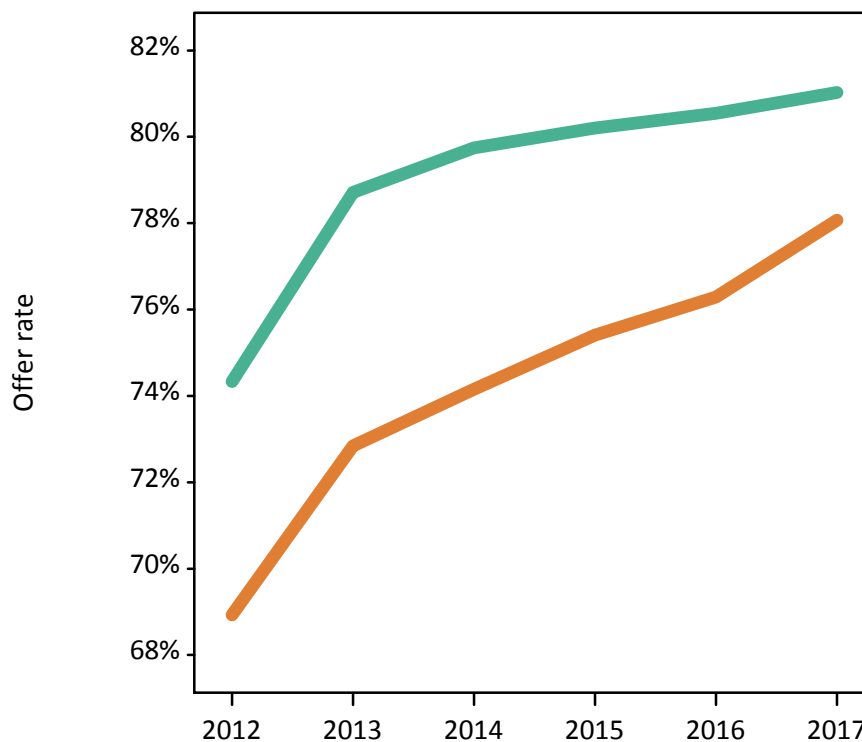
### P.4 18 year old applications by sex

Statistic	Sex	2012	2013	2014	2015	2016	2017
June deadline applications	Men	444,320	446,380	460,945	472,255	478,930	483,240
	Women	564,790	564,875	582,335	616,335	622,040	621,035
Offers	Men	330,280	351,350	367,580	378,775	385,745	391,540
	Women	389,315	411,475	431,825	464,750	474,535	484,825
Offer rate	Men	74.3%	78.7%	79.7%	80.2%	80.5%	81.0%
	Women	68.9%	72.8%	74.2%	75.4%	76.3%	78.1%
Average offer rate	Men	74.7%	79.0%	80.0%	80.5%	80.9%	81.3%
	Women	68.6%	72.6%	73.9%	75.2%	76.0%	77.8%
Percentage point difference between offer rate and average offer rate	Men	-0.4	-0.3	-0.3	-0.3	-0.3	-0.3
	Women	0.3	0.2	0.2	0.3	0.3	0.2
Contribution of group to the average offer rate	Men	0.605	0.610	0.613	0.607	0.607	0.608
	Women	0.689	0.692	0.694	0.699	0.697	0.695

### P.5 18 year old offer rate by sex

Note: The line for a group is not plotted when that group made fewer than 10 applications in any of the years from 2012-2017.

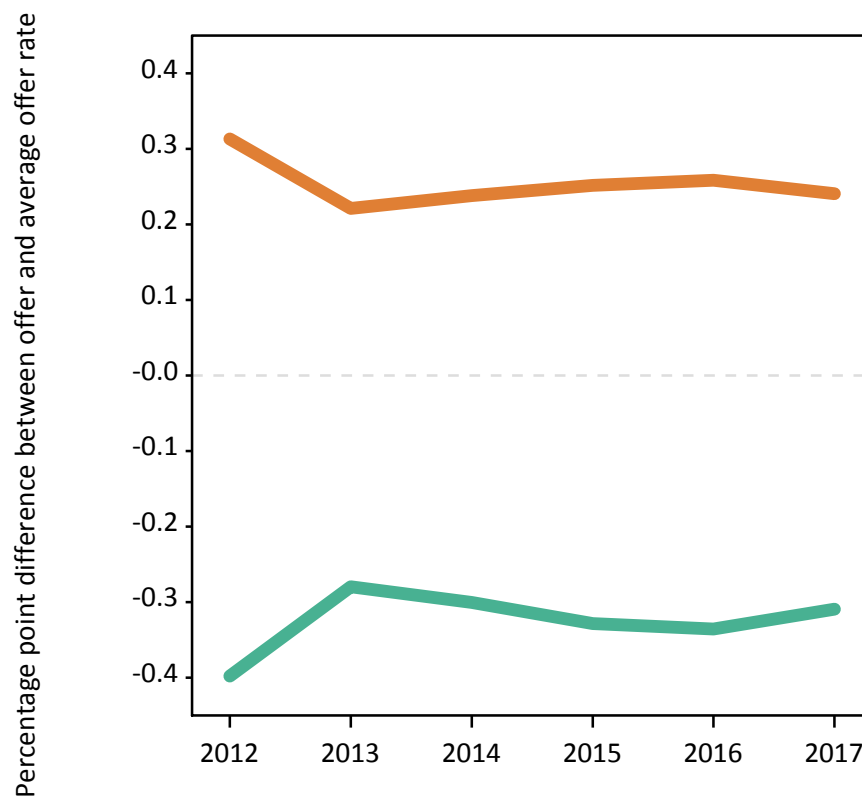
Men  
Women



### P.6 Percentage point difference between 18 year old offer rate and average offer rate by sex

Note: The line for a group is not plotted when that group made fewer than 50 applications in any of the years from 2012-2017.

Men  
Women



## P.7 18 year old applicants by POLAR3 quintile

Statistic	POLAR3 quintile	2012	2013	2014	2015	2016	2017
June deadline applicants	Quintile 1	24,565	25,210	27,205	28,295	28,505	28,805
	Quintile 2	35,230	36,050	37,660	39,420	39,720	39,625
	Quintile 3	44,915	45,700	47,050	49,115	49,420	49,800
	Quintile 4	54,435	55,020	55,455	58,035	58,375	58,265
	Quintile 5	72,650	72,280	73,340	75,570	76,945	77,360
Placed June deadline applicants	Quintile 1	16,115	17,110	18,465	19,305	19,725	20,170
	Quintile 2	23,075	24,615	25,675	26,975	27,400	27,405
	Quintile 3	29,240	31,095	31,615	33,640	33,860	34,445
	Quintile 4	35,755	37,295	37,395	39,945	40,090	39,580
	Quintile 5	48,425	49,545	49,610	52,260	52,585	52,785
All placed applicants	Quintile 1	18,595	19,640	21,270	22,380	22,780	23,470
	Quintile 2	26,825	28,265	29,730	31,320	31,855	32,135
	Quintile 3	34,395	36,150	37,090	39,615	39,950	40,810
	Quintile 4	41,290	42,915	43,305	46,130	46,590	46,520
	Quintile 5	55,420	56,365	57,145	60,230	61,005	61,825
June deadline applicants per 10,000 population	Quintile 1	1,724.2	1,808.9	1,955.1	2,019.7	2,111.2	2,165.9
	Quintile 2	2,349.6	2,446.5	2,573.9	2,654.1	2,746.9	2,790.0
	Quintile 3	2,908.5	2,996.7	3,126.3	3,198.4	3,287.4	3,343.8
	Quintile 4	3,430.6	3,518.0	3,598.5	3,707.3	3,781.0	3,815.0
	Quintile 5	4,324.5	4,371.2	4,496.7	4,514.2	4,657.2	4,710.6
Placed June deadline applicants per 10,000 population	Quintile 1	1,131.1	1,227.7	1,327.1	1,377.8	1,461.2	1,516.7
	Quintile 2	1,539.1	1,670.6	1,754.6	1,816.0	1,894.8	1,929.7
	Quintile 3	1,893.5	2,039.1	2,100.8	2,190.7	2,252.4	2,313.0
	Quintile 4	2,253.2	2,384.7	2,426.4	2,551.8	2,596.7	2,591.5
	Quintile 5	2,882.5	2,996.4	3,041.7	3,121.8	3,182.8	3,214.2
All placed applicants per 10,000 population	Quintile 1	1,305.1	1,409.2	1,528.7	1,597.4	1,687.5	1,764.7
	Quintile 2	1,789.0	1,918.3	2,031.8	2,108.5	2,203.0	2,262.6
	Quintile 3	2,227.1	2,370.3	2,464.5	2,579.9	2,657.4	2,740.3
	Quintile 4	2,602.2	2,743.9	2,809.9	2,946.8	3,017.6	3,045.9
	Quintile 5	3,298.7	3,408.9	3,503.9	3,597.9	3,692.4	3,764.6

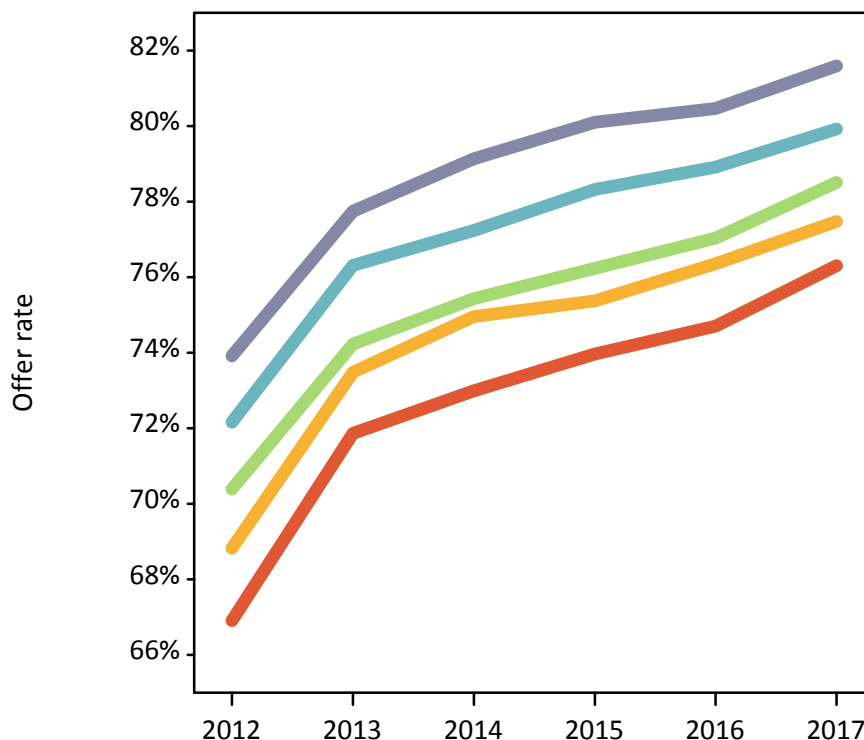
## P.8 18 year old applications by POLAR3 quintile

Statistic	POLAR3 quintile	2012	2013	2014	2015	2016	2017
June deadline applications	Quintile 1	104,560	106,215	115,675	120,635	122,275	123,075
	Quintile 2	152,260	154,940	162,710	170,655	172,180	171,485
	Quintile 3	196,480	198,815	205,775	215,395	216,545	218,140
	Quintile 4	236,430	237,410	239,530	251,365	253,240	252,170
	Quintile 5	317,425	312,185	317,650	328,480	334,465	336,415
Offers	Quintile 1	69,960	76,335	84,435	89,230	91,340	93,910
	Quintile 2	104,795	113,855	121,970	128,620	131,475	132,855
	Quintile 3	138,300	147,580	155,210	164,200	166,815	171,260
	Quintile 4	170,605	181,180	185,010	196,870	199,835	201,535
	Quintile 5	234,635	242,690	251,365	263,115	269,115	274,465
Offer rate	Quintile 1	66.9%	71.9%	73.0%	74.0%	74.7%	76.3%
	Quintile 2	68.8%	73.5%	75.0%	75.4%	76.4%	77.5%
	Quintile 3	70.4%	74.2%	75.4%	76.2%	77.0%	78.5%
	Quintile 4	72.2%	76.3%	77.2%	78.3%	78.9%	79.9%
	Quintile 5	73.9%	77.7%	79.1%	80.1%	80.5%	81.6%
Average offer rate	Quintile 1	68.0%	73.0%	74.2%	75.1%	75.7%	77.4%
	Quintile 2	69.3%	74.0%	75.3%	76.0%	76.9%	78.0%
	Quintile 3	70.8%	74.7%	75.8%	76.6%	77.4%	78.9%
	Quintile 4	72.1%	76.0%	77.1%	78.1%	78.7%	79.8%
	Quintile 5	73.1%	77.1%	78.4%	79.3%	79.7%	80.8%
Percentage point difference between offer rate and average offer rate	Quintile 1	-1.1	-1.2	-1.2	-1.1	-1.0	-1.1
	Quintile 2	-0.5	-0.5	-0.4	-0.6	-0.5	-0.5
	Quintile 3	-0.4	-0.4	-0.4	-0.4	-0.3	-0.4
	Quintile 4	0.1	0.3	0.2	0.2	0.2	0.1
	Quintile 5	0.8	0.7	0.8	0.8	0.7	0.8
Contribution of group to the average offer rate	Quintile 1	0.211	0.212	0.216	0.213	0.213	0.212
	Quintile 2	0.237	0.240	0.239	0.239	0.238	0.239
	Quintile 3	0.267	0.267	0.266	0.265	0.263	0.265
	Quintile 4	0.297	0.296	0.290	0.291	0.288	0.287
	Quintile 5	0.410	0.406	0.403	0.399	0.399	0.399

### P.9 18 year old offer rate by POLAR3 quintile

Note: The line for a group is not plotted when that group made fewer than 10 applications in any of the years from 2012-2017.

- Quintile 1
- Quintile 2
- Quintile 3
- Quintile 4
- Quintile 5



### P.10 Percentage point difference between 18 year old offer rate and average offer rate by POLAR3 quintile

Note: The line for a group is not plotted when that group made fewer than 50 applications in any of the years from 2012-2017.

- Quintile 1
- Quintile 2
- Quintile 3
- Quintile 4
- Quintile 5



## P.11 18 year old applicants by ethnic group

Statistic	Ethnic group	2012	2013	2014	2015	2016	2017
June deadline applicants	Asian	24,395	25,430	26,995	28,940	30,500	32,235
	Black	10,205	11,505	12,195	13,305	13,590	13,835
	Mixed	8,430	8,880	9,550	10,640	11,150	11,800
	White	185,420	185,045	188,205	193,090	192,995	191,025
	Other	2,630	2,745	3,175	3,440	3,640	4,045
Placed June deadline applicants	Asian	14,730	16,360	17,075	18,715	19,750	20,845
	Black	6,035	7,175	7,490	8,400	8,675	8,950
	Mixed	5,585	6,010	6,570	7,355	7,685	8,095
	White	124,215	127,935	129,290	134,750	134,550	133,330
	Other	1,570	1,720	1,970	2,200	2,295	2,560
All placed applicants	Asian	19,760	21,240	22,525	24,605	26,150	27,845
	Black	8,500	9,795	10,350	11,540	11,890	12,245
	Mixed	6,585	7,040	7,725	8,720	9,075	9,685
	White	138,845	142,290	144,690	150,925	150,950	150,580
	Other	2,130	2,250	2,615	2,930	3,075	3,500
June deadline applicants per 10,000 population	Asian	3,766.9	3,855.7	3,980.7	4,088.8	4,238.5	4,381.2
	Black	3,623.0	3,875.4	4,022.3	4,179.6	4,340.8	4,396.3
	Mixed	3,237.3	3,285.0	3,319.5	3,450.8	3,544.0	3,676.3
	White	2,871.7	2,940.8	3,050.6	3,099.0	3,190.7	3,218.9
	Other	2,974.5	3,026.1	3,412.3	3,571.0	3,658.8	3,927.0
Placed June deadline applicants per 10,000 population	Asian	2,274.4	2,480.2	2,518.0	2,644.0	2,744.5	2,833.3
	Black	2,143.0	2,416.6	2,470.8	2,639.1	2,770.9	2,843.9
	Mixed	2,143.5	2,223.2	2,283.7	2,385.2	2,441.9	2,521.2
	White	1,923.7	2,033.2	2,095.7	2,162.7	2,224.5	2,246.7
	Other	1,776.5	1,896.8	2,114.4	2,283.5	2,304.2	2,484.4
All placed applicants per 10,000 population	Asian	3,051.0	3,220.1	3,321.7	3,476.3	3,633.9	3,784.8
	Black	3,018.3	3,299.4	3,414.0	3,625.8	3,798.1	3,892.0
	Mixed	2,528.5	2,603.4	2,684.5	2,828.2	2,884.6	3,017.8
	White	2,150.4	2,261.4	2,345.3	2,422.3	2,495.6	2,537.4
	Other	2,409.4	2,479.1	2,810.6	3,039.8	3,089.0	3,396.9

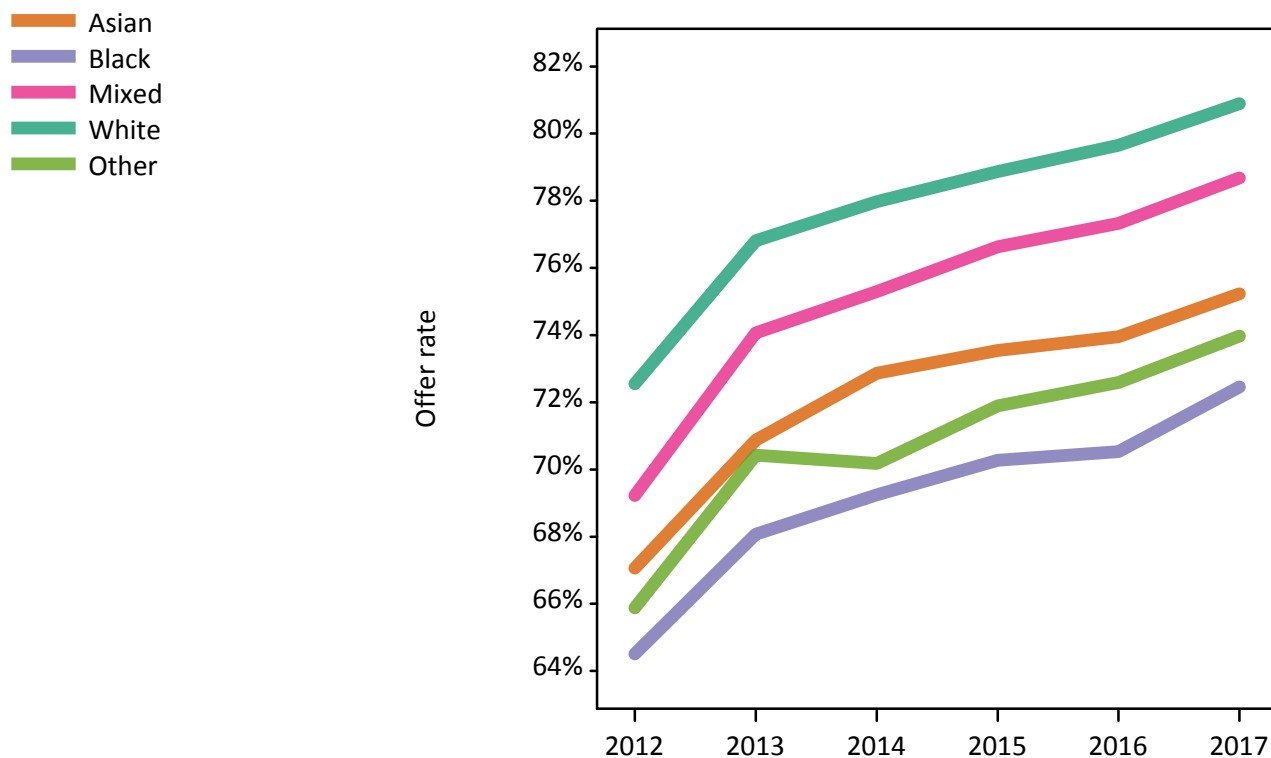


## P.12 18 year old applications by ethnic group

Statistic	Ethnic group	2012	2013	2014	2015	2016	2017
June deadline applications	Asian	115,185	119,430	126,395	135,565	143,075	151,530
	Black	49,030	54,885	58,045	63,545	64,825	65,945
	Mixed	38,115	39,755	42,770	47,760	50,245	52,990
	White	789,285	779,705	796,685	819,020	818,640	807,895
	Other	12,340	12,825	14,825	16,075	17,030	18,885
Offers	Asian	77,245	84,645	92,100	99,700	105,805	114,000
	Black	31,630	37,360	40,195	44,650	45,720	47,780
	Mixed	26,385	29,445	32,205	36,600	38,850	41,690
	White	572,630	598,940	621,180	645,965	652,085	653,475
	Other	8,130	9,030	10,405	11,555	12,360	13,970
Offer rate	Asian	67.1%	70.9%	72.9%	73.5%	74.0%	75.2%
	Black	64.5%	68.1%	69.2%	70.3%	70.5%	72.5%
	Mixed	69.2%	74.1%	75.3%	76.6%	77.3%	78.7%
	White	72.6%	76.8%	78.0%	78.9%	79.7%	80.9%
	Other	65.9%	70.4%	70.2%	71.9%	72.6%	74.0%
Average offer rate	Asian	68.4%	72.0%	73.9%	74.6%	74.9%	76.0%
	Black	67.9%	71.0%	72.1%	72.8%	73.3%	74.8%
	Mixed	69.7%	74.4%	75.7%	76.9%	77.5%	78.8%
	White	72.1%	76.4%	77.5%	78.4%	79.2%	80.5%
	Other	68.5%	71.9%	72.5%	73.9%	74.4%	75.8%
Percentage point difference between offer rate and average offer rate	Asian	-1.4	-1.1	-1.0	-1.0	-1.0	-0.7
	Black	-3.3	-2.9	-2.8	-2.5	-2.8	-2.4
	Mixed	-0.5	-0.3	-0.4	-0.3	-0.2	-0.1
	White	0.5	0.4	0.4	0.4	0.4	0.4
	Other	-2.6	-1.5	-2.3	-2.0	-1.8	-1.8
Contribution of group to the average offer rate	Asian	0.322	0.318	0.311	0.311	0.315	0.322
	Black	0.189	0.195	0.188	0.184	0.184	0.187
	Mixed	0.118	0.117	0.117	0.119	0.119	0.122
	White	0.840	0.831	0.823	0.814	0.808	0.801
	Other	0.121	0.114	0.116	0.112	0.111	0.111

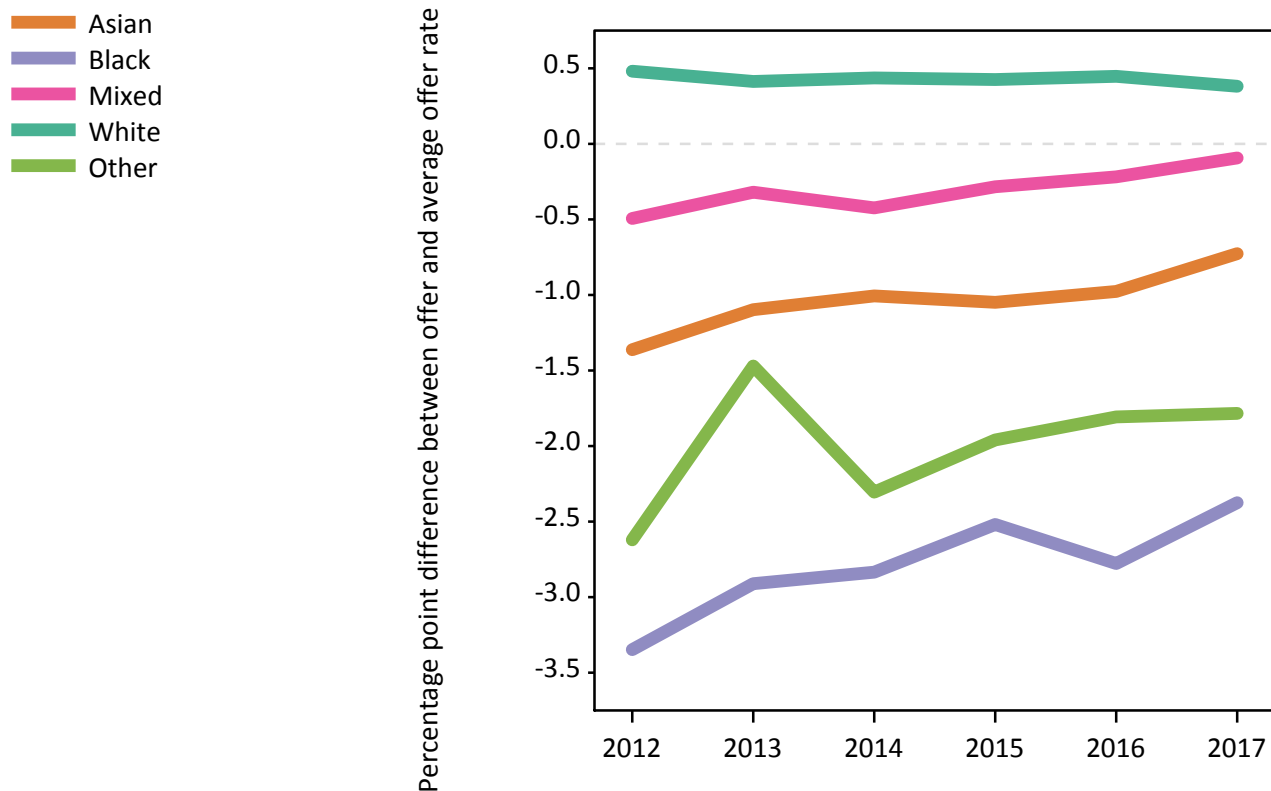
### P.13 18 year old offer rate by ethnic group

Note: The line for a group is not plotted when that group made fewer than 10 applications in any of the years from 2012-2017.



### P.14 Percentage point difference between 18 year old offer rate and average offer rate by ethnic group

Note: The line for a group is not plotted when that group made fewer than 50 applications in any of the years from 2012-2017.



### P.15 Applicants (all ages)

Statistic	2012	2013	2014	2015	2016	2017
June deadline applicants	457,965	471,035	487,145	491,190	491,235	467,960
Placed June deadline applicants	279,540	300,775	309,170	318,095	319,110	311,785
All placed applicants	340,740	365,250	379,410	392,480	392,285	388,910

### P.16 Applications (all ages)

Statistic	2012	2013	2014	2015	2016	2017
June deadline applications	1,845,305	1,881,515	1,954,270	1,979,080	1,976,965	1,885,050
Offers	1,106,675	1,205,330	1,270,425	1,322,025	1,332,200	1,324,700
Offer rate	60.0%	64.1%	65.0%	66.8%	67.4%	70.3%

### P.17 Applicants (all ages) by sex

Statistic	Sex	2012	2013	2014	2015	2016	2017
June deadline applicants	Men	194,435	200,725	206,625	207,650	206,595	198,920
	Women	263,530	270,310	280,520	283,535	284,645	269,035
Placed June deadline applicants	Men	123,135	132,970	135,435	138,035	137,620	134,190
	Women	156,405	167,805	173,735	180,060	181,490	177,595
All placed applicants	Men	151,260	162,430	167,410	171,340	170,345	168,445
	Women	189,480	202,820	212,000	221,145	221,940	220,465

### P.18 Applications (all ages) by sex

Statistic	Sex	2012	2013	2014	2015	2016	2017
June deadline applications	Men	797,995	814,235	842,435	848,115	843,855	814,190
	Women	1,047,305	1,067,280	1,111,835	1,130,965	1,133,110	1,070,860
Offers	Men	516,970	564,300	590,805	604,940	604,280	597,165
	Women	589,705	641,030	679,620	717,080	727,915	727,530
Offer rate	Men	64.8%	69.3%	70.1%	71.3%	71.6%	73.3%
	Women	56.3%	60.1%	61.1%	63.4%	64.2%	67.9%

### P.19 Applicants (all ages) by POLAR3 quintile

Statistic	POLAR3 quintile	2012	2013	2014	2015	2016	2017
June deadline applicants	Quintile 1	60,165	62,160	66,325	66,210	66,430	62,910
	Quintile 2	76,150	78,840	82,765	83,370	82,895	78,205
	Quintile 3	93,990	96,830	100,305	101,005	100,870	95,315
	Quintile 4	102,630	105,720	107,935	109,120	108,865	103,585
	Quintile 5	123,750	126,400	128,690	130,320	130,900	126,370
Placed June deadline applicants	Quintile 1	35,845	39,035	41,675	42,110	42,770	42,145
	Quintile 2	45,845	49,980	52,370	53,480	53,540	52,110
	Quintile 3	56,065	60,850	62,605	64,485	64,710	63,110
	Quintile 4	63,030	67,855	68,665	71,055	71,065	68,630
	Quintile 5	78,100	82,460	83,250	86,295	86,270	84,810
All placed applicants	Quintile 1	43,605	47,205	50,735	51,805	52,245	52,245
	Quintile 2	56,240	60,705	64,225	66,010	65,925	65,345
	Quintile 3	70,205	75,830	78,950	81,975	81,690	80,630
	Quintile 4	76,560	82,305	84,235	87,345	87,075	85,625
	Quintile 5	93,175	98,330	100,390	104,295	104,280	103,635

### P.20 Applications (all ages) by POLAR3 quintile

Statistic	POLAR3 quintile	2012	2013	2014	2015	2016	2017
June deadline applications	Quintile 1	230,070	234,270	252,555	254,140	255,135	241,255
	Quintile 2	300,540	308,870	326,285	330,235	328,420	310,165
	Quintile 3	382,100	390,900	406,425	411,280	408,885	387,620
	Quintile 4	416,275	426,555	436,005	442,665	441,100	419,080
	Quintile 5	511,235	516,650	528,550	536,165	538,440	520,795
Offers	Quintile 1	124,630	138,125	152,195	157,290	159,210	158,620
	Quintile 2	170,955	189,730	204,065	211,820	212,825	210,255
	Quintile 3	221,080	241,765	255,495	265,595	266,840	265,545
	Quintile 4	255,635	279,520	288,380	301,495	302,890	299,415
	Quintile 5	331,765	353,815	367,700	383,140	387,440	386,875
Offer rate	Quintile 1	54.2%	59.0%	60.3%	61.9%	62.4%	65.7%
	Quintile 2	56.9%	61.4%	62.5%	64.1%	64.8%	67.8%
	Quintile 3	57.9%	61.8%	62.9%	64.6%	65.3%	68.5%
	Quintile 4	61.4%	65.5%	66.1%	68.1%	68.7%	71.4%
	Quintile 5	64.9%	68.5%	69.6%	71.5%	72.0%	74.3%

## P.21 Applicants (all ages) by ethnic group

Statistic	Ethnic group	2012	2013	2014	2015	2016	2017
June deadline applicants	Asian	51,150	52,915	55,815	58,150	59,930	58,935
	Black	41,480	41,420	43,470	44,585	45,560	41,595
	Mixed	17,745	18,765	20,370	21,645	22,385	22,230
	White	337,145	347,420	356,215	354,250	350,110	331,835
	Other	7,110	7,190	7,960	8,380	8,770	9,080
Placed June deadline applicants	Asian	28,565	31,465	32,725	34,840	36,245	36,735
	Black	19,300	20,740	21,625	22,810	24,040	23,685
	Mixed	10,950	12,065	13,020	14,200	14,670	14,870
	White	215,050	230,560	235,520	238,930	236,410	228,380
	Other	3,820	3,995	4,470	4,835	5,115	5,485
All placed applicants	Asian	40,265	43,230	45,715	48,870	50,785	51,630
	Black	29,800	31,460	34,840	36,285	36,580	36,970
	Mixed	13,670	15,020	16,435	17,875	18,325	18,780
	White	247,475	264,965	271,145	276,490	273,450	267,515
	Other	5,605	5,875	6,610	7,285	7,550	8,325

## P.22 Applications (all ages) by ethnic group

Statistic	Ethnic group	2012	2013	2014	2015	2016	2017
June deadline applications	Asian	228,975	236,095	248,770	259,185	266,190	263,650
	Black	182,050	181,800	190,110	195,040	198,045	180,730
	Mixed	74,770	78,670	85,280	91,035	94,105	93,350
	White	1,314,960	1,340,240	1,382,305	1,380,395	1,362,250	1,290,650
	Other	31,105	31,365	34,745	36,690	38,445	39,695
Offers	Asian	133,400	146,715	158,185	168,390	174,545	179,910
	Black	72,915	80,870	86,760	93,245	95,360	95,665
	Mixed	43,690	49,315	54,345	60,015	62,855	64,960
	White	832,720	902,655	943,515	968,265	965,310	948,050
	Other	16,800	18,310	20,490	22,145	23,435	25,455
Offer rate	Asian	58.3%	62.1%	63.6%	65.0%	65.6%	68.2%
	Black	40.1%	44.5%	45.6%	47.8%	48.2%	52.9%
	Mixed	58.4%	62.7%	63.7%	65.9%	66.8%	69.6%
	White	63.3%	67.4%	68.3%	70.1%	70.9%	73.5%
	Other	54.0%	58.4%	59.0%	60.4%	60.9%	64.1%

## Technical Notes and Definitions

### UCAS undergraduate scheme

#### Adjustment

Adjustment allows applicants who have met and exceeded the terms of their conditional firm offer to seek and find a place at another provider whilst keeping their place at their original firm choice provider.

#### Clearing

Clearing is a route for applicants that are not placed and holding no offers to find a place on courses with vacancies.

#### Cycle year

The UCAS application cycle which runs from September to October the following year. For example the 2017 cycle runs from September 2016 through to October 2017.

#### End of cycle

The point in the cycle to which the numbers in this report refer, and the point at which the cycle is closed such that no more applications or offers can be made, and no more applicants can be placed. Numbers reported at the end of cycle exclude information on a small number of applicants who cancelled during the cycle.

#### Extra

Applicants who are unsuccessful in obtaining an offer or decline all offers may be eligible to apply through Extra, where they can apply to one further course at a time. Extra operates from 25 February until early July. It provides applicants who are eligible the possibility of obtaining an offer before exam results are published and Clearing starts.

#### June 30 deadline

The deadline for main scheme applications. Applicants who apply after this date will go directly into Clearing.

#### Record of Prior Acceptance (RPA)

RPA is an acceptance route used when a provider informs UCAS of applicants it has accepted outside of the normal application process (e.g. individuals who have applied directly to the provider).

### Reporting groups

#### Ethnic group

High level grouping of ethnic origin as declared by the applicant: 'White', 'Black', 'Asian', 'Mixed', 'Other', 'Unknown'. Applicants who declare themselves as 'Unknown' ethnic origin are not reported in these tables, but are included in the associated csv data file.

#### POLAR3 quintile

Developed by HEFCE, POLAR3 classifies small areas across the UK into five groups according to their level of young participation in Higher Education. Each of these groups represents around 20 per cent of young people and is ranked from Quintile 1 (areas with the lowest young participation rates, considered as the most disadvantaged) to Quintile 5 (highest young participation rates, considered most advantaged). POLAR3 is based on the participation rates of young people between 2005 and 2009 who entered Higher Education between 2005-06 and 2010-11, therefore is most suitable for applicants aged 19 and under. These groups are assigned using the postcode declared by the applicant at the time of their application. If a UK postcode is invalid, considered unsafe for measurement or there is no link to Census geography possible then the applicant is not assigned to a quintile. Applicants with no POLAR3 quintile are not reported.

#### Sex

Sex as declared by the applicant.

### SIMD 2016 quintile

Scottish index of multiple deprivation (SIMD) identifies small area concentrations of multiple deprivation across all of Scotland, providing a relative measure of deprivation amongst 6505 small areas (data zones) based on 7 socio-economic domains. These small areas are classified into five groups ranked from Quintile 1 (considered the most deprived) to Quintile 5 (considered least deprived), with equal populations in each quintile. Quintiles are assigned using the postcode declared by the applicant, applicants declaring invalid postcodes are classified as 'Not assigned' and are not reported.

SIMD is only defined for applicants domiciled in Scotland, therefore any applicants domiciled outside of Scotland cannot be assigned to an SIMD quintile and so are not reported for this measure.

SIMD is only reported for providers in Scotland. Application and entry rates by SIMD are reported in the 2017 End of Cycle Report and the 2017 cycle January deadline application rate report.

### Statistics reported in the tables

#### All placed applicants

The number of applicants placed for entry into higher education at the provider through one of their choices, including any choices made through Extra, or via Adjustment, Clearing or RPA.

#### All placed applicants per 10,000 population

The number of total UK domiciled 18 year old placed applicants for entry into higher education at the provider divided by the number of UK 18 year olds in the population, multiplied by 10,000. This gives the number of 18 year olds, for every 10,000 in the population, that were placed at the provider through one of their choices, including any choices made through Extra, or via Adjustment, Clearing or RPA. It is an alternative way of expressing the entry rate to a provider. By referencing the underlying population this statistic shows how the number of placed applicants is changing in relation to the available pool of potential applicants and so gives the chance that somebody from the group will be placed at a provider.

This statistic is only reported for 18 year olds.

#### Average offer rate

The offer rate that you might expect if the predicted grades and subject choice of applicants were the only factors that influenced whether an applicant was made an offer by the provider. The average offer rate is calculated by dividing applicants according to their specific combination of grades (for A levels the best three predicted grades are used, for BTECs, International Baccalaureate and Scottish Highers and Advanced Highers, predicted grades along with any grades already achieved upon applying are used) and subject choice. For each combination the number of main scheme offers is divided by the number of main scheme applications, to give an overall offer rate. This is then multiplied by the number of applications made by the group for which the average offer rate is being calculated (for example POLAR3 quintile 1), to give an average number of offers for that group. These average number of offers are then added together across all combinations of predicted grade and subject and divided by the number of main scheme applications from the group to give the average offer rate.

The average offer rate does not attempt to control for any other factors that may play a part in the decision to make an offer, such as the subject of the qualifications studied, their relevance to a course, or the grade in each subject; higher numbers of A levels being studied; the exact profile of grades predicted; personal statements; teacher references; interviews; or any other criteria (such as work experience or portfolios) that may be part of the admissions decision.

This statistic is only reported for 18 year olds.



### Contribution of group to the average offer rate

The way in which the average offer rate is defined means that the pattern of application and offers of a group (for example POLAR3 quintile 1) will always contribute, in part, to the average offer rate for that group. When this contribution is large, the average offer rate will mainly reflect the patterns for the group, meaning that the value of the average offer rate will be similar to the offer rate, the percentage point difference statistic will be small, and any real difference between the offer rate and what might be expected given the predicted grades and subject choices of the applicants will be difficult to detect.

Values of the contribution of group to the average offer rate range between 0 and 1. The closer the value is to 1 the greater the contribution a group makes to its own average offer rate.

This statistic is only reported for 18 year olds.

### Placed June deadline applicants

An applicant who has been placed for entry into higher education at the provider through a June deadline application.

### Placed June deadline applicants per 10,000 population

The number of UK domiciled 18 year old placed June deadline applicants at the provider divided by the number of UK 18 year olds in the population, multiplied by 10,000. This gives the number of 18 year olds, for every 10,000 in the population, that were placed at the provider through one of their June deadline applications. It is an alternative way of expressing the entry rate to a provider, but for placed June deadline applicants only. By referencing the underlying population this statistic shows how the number of placed June deadline applicants is changing in relation to the available pool of potential 18 year old applicants and so gives the chance that somebody from the group will be placed at a provider through a June deadline application.

This statistic is only reported for 18 year olds.

### June deadline applications

An application (or choice) to a course in higher education to the provider that is made by the June 30 deadline. Each applicant can make up to five choices this way. The number of June deadline applications does not include choices made through the following routes: Clearing, Extra, Adjustment and RPAs. Applications made to October deadline courses received after the October deadline are not included in these statistics.

### June deadline applicants

The number of applicants that made at least one application to the provider by the June 30 deadline.

### June deadline applicants per 10,000 population

The number of UK domiciled 18 year old June deadline applicants to the provider divided by the number of UK 18 year olds in the population, multiplied by 10,000. This gives the number of 18 year olds, for every 10,000 in the population, who applied by the June 30 deadline. It is equivalent to the application rate. By referencing the underlying population this statistic shows how the number of June deadline applicants is changing in relation to the available pool of potential 18 year old applicants and so gives the chance that somebody from the group will apply to a provider by the June 30 deadline.

This statistic is only reported for 18 year olds.

### Offers

An offer is defined as a provider's decision in response to an application to offer a place to an applicant, often subject to the applicant satisfying academic and/or other criteria, via a June deadline application (i.e. does not cover choices made through the following routes: Clearing, Extra, Adjustment and RPAs).

### Offer rate

The number of offers made divided by the number of June deadline applications. This gives the proportion of all June deadline applications to the provider that received an offer.

### Percentage point difference between offer rate and average offer rate

The offer rate minus the average offer rate.

The percentage point difference can be compared to the expected range of statistical variation resulting from the calculation of the average offer rate using the Average Offer Rate Lookup Table. Where the value of the percentage point difference lies outside of this range, the percentage point difference may be considered to represent a real difference between the offer rate and the average offer rate.

### Other definitions

#### Age

This analysis uses country-specific age definitions that align with the cut off points for school and college cohorts within the different administrations of the UK. For England and Wales, ages are defined on the 31 August, for Northern Ireland on the 1 July and for Scotland on the 28 February the following year. Defining ages in this way matches the assignment of children to school cohorts. For applicants outside of the UK a cohort cut off of 31 August has been used. Numbers for applicants aged 17 and under are included in the tables that report numbers for all age groups. Providers in Scotland typically receive a higher proportion of applicants aged 17 and under compared to providers elsewhere in the UK.

#### Provider

A higher education provider - a university or college.

#### UK domiciled

Declared area of permanent residence within England, Northern Ireland, Scotland and Wales. Applicants from the Channel Islands and Isle of Man are not included.