

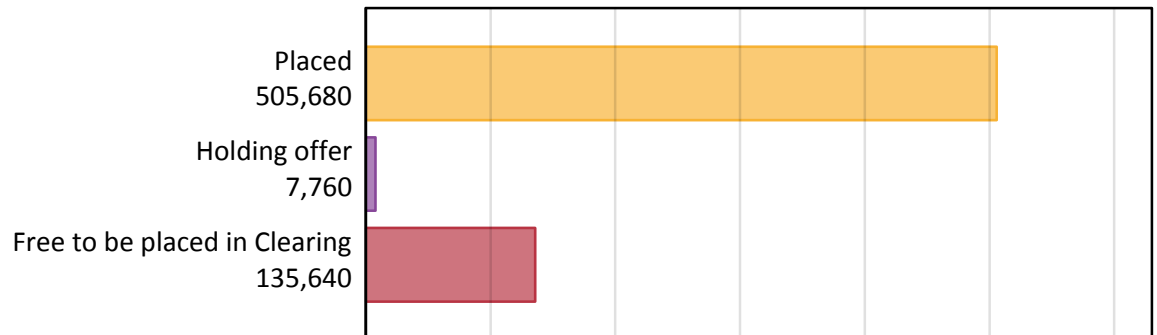
Daily Clearing Analysis: Overview

Analysis at 00:05 on Thursday 14 September 2017 (28 days after A level results day)

A.1 Applicants by type and status from all domiciles, 2017 cycle

Applicant type	Status	2017
Main scheme	Placed (Clearing)	46,310
	Placed (Adjustment)	1,050
	Placed (Firm)	391,730
	Placed (Insurance)	37,020
	Placed (Other)	15,930
	Holding offer	7,760
	Free to be placed in Clearing	135,640
Direct to Clearing	Placed (Direct to Clearing)	13,640
	Other (Direct to Clearing)	7,980
All applicants	Placed	505,680

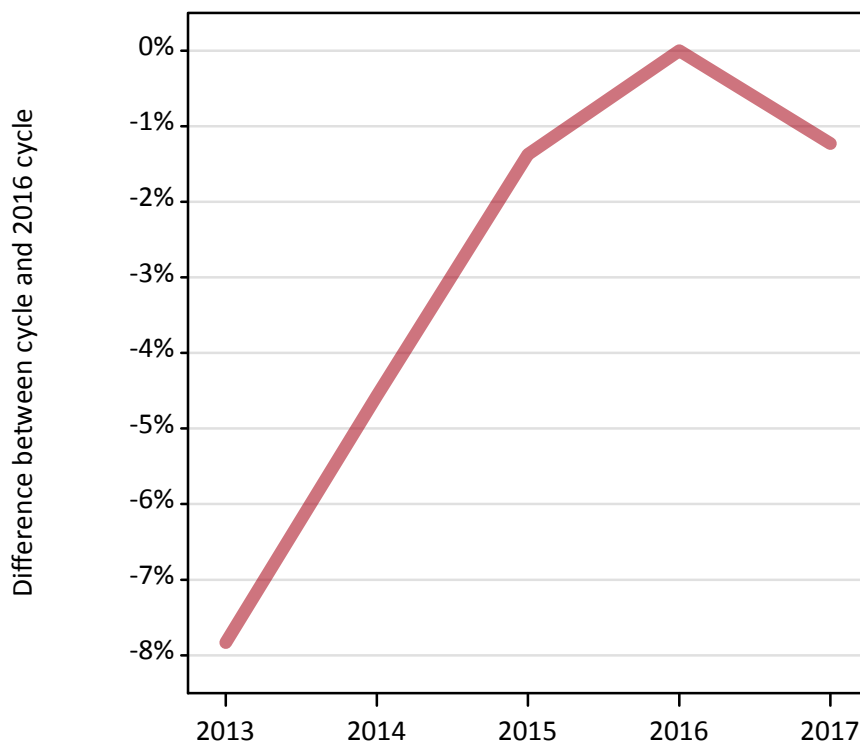
A.2 Summary of applicants who are placed, holding offers or free to be placed in Clearing (all domiciles)



A.3 All placed applicants from all domiciles: 28 days after A level results day

All placed applicants: difference between cycle and 2016 cycle

Placed



A.4 All placed applicants from all domiciles: 28 days after A level results day

All placed applicants: applicants at 28 days after A level results day

Applicant type	Status	2013	2014	2015	2016	2017
All applicants	Placed	471,880	488,610	504,950	511,980	505,680

A.5 All placed applicants from all domiciles: 28 days after A level results day

All placed applicants: difference between cycle and 2016 cycle

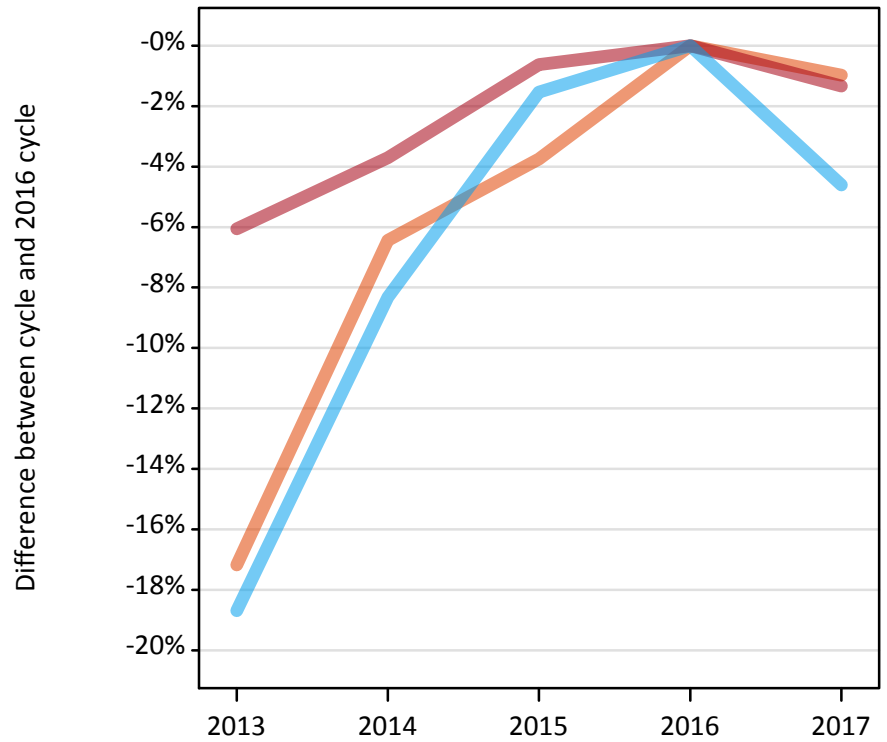
Applicant type	Status	2013	2014	2015	2016	2017
All applicants	Placed	-8%	-5%	-1%	0%	-1%

Note: Percentage changes are not plotted for lines with, on average, fewer than 30 applicants per year. As a result, lines for some, or all, of the states may be missing.

A.6 Placed main scheme applicants from all domiciles: 28 days after A level results day

Selected placed routes: difference between cycle and 2016 cycle

- Placed (Clearing)
- Placed (Firm)
- Placed (Insurance)



A.7 Placed main scheme applicants from all domiciles: 28 days after A level results day

All Main scheme placed routes (excluding Adjustment): applicants at 28 days after A level results day

Applicant type	Status	2013	2014	2015	2016	2017
Main scheme	Placed (Clearing)	38,730	43,750	45,010	46,770	46,310
	Placed (Firm)	372,980	382,350	394,570	397,050	391,730
	Placed (Insurance)	31,550	35,580	38,210	38,810	37,020
	Placed (Other)	15,610	15,030	14,450	15,960	15,930

A.8 Placed main scheme applicants from all domiciles: 28 days after A level results day

Selected placed routes: difference between cycle and 2016 cycle

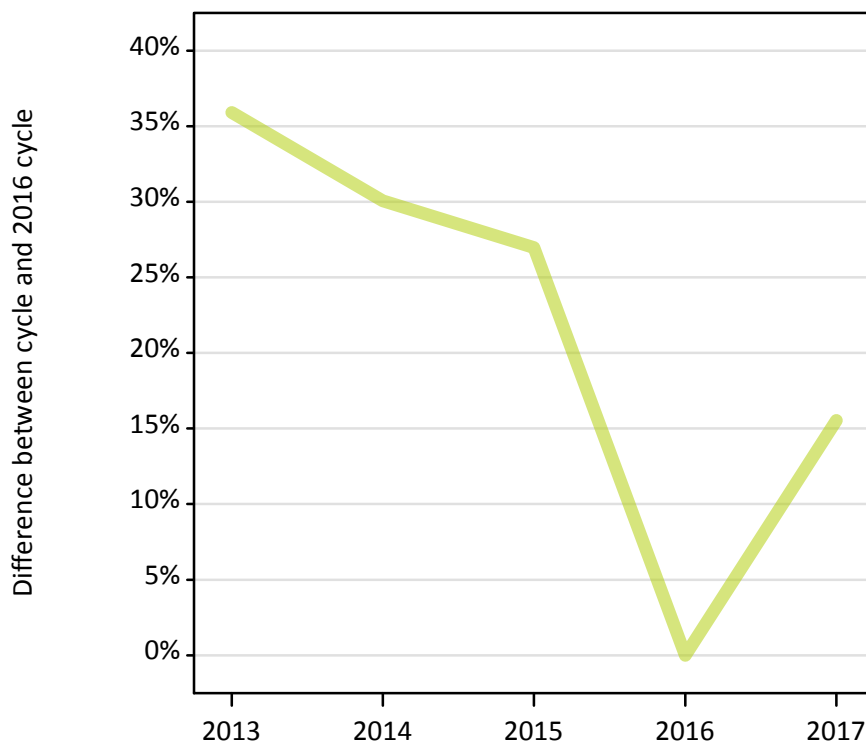
Applicant type	Status	2013	2014	2015	2016	2017
Main scheme	Placed (Clearing)	-17%	-6%	-4%	0%	-1%
	Placed (Firm)	-6%	-4%	-1%	0%	-1%
	Placed (Insurance)	-19%	-8%	-2%	0%	-5%

Note: Percentage changes are not plotted for lines with, on average, fewer than 30 applicants per year. As a result, lines for some, or all, of the states may be missing.

A.9 Main scheme applicants placed through adjustment: 28 days after A level results day

Placed through adjustment: difference between cycle and 2016 cycle

Placed (Adjustment)



A.10 Main scheme applicants placed through adjustment: 28 days after A level results day

Placed through adjustment: applicants at 28 days after A level results day

Applicant type	Status	2013	2014	2015	2016	2017
Main scheme	Placed (Adjustment)	1,230	1,180	1,150	910	1,050

A.11 Main scheme applicants placed through adjustment: 28 days after A level results day

Placed through adjustment: difference between cycle and 2016 cycle

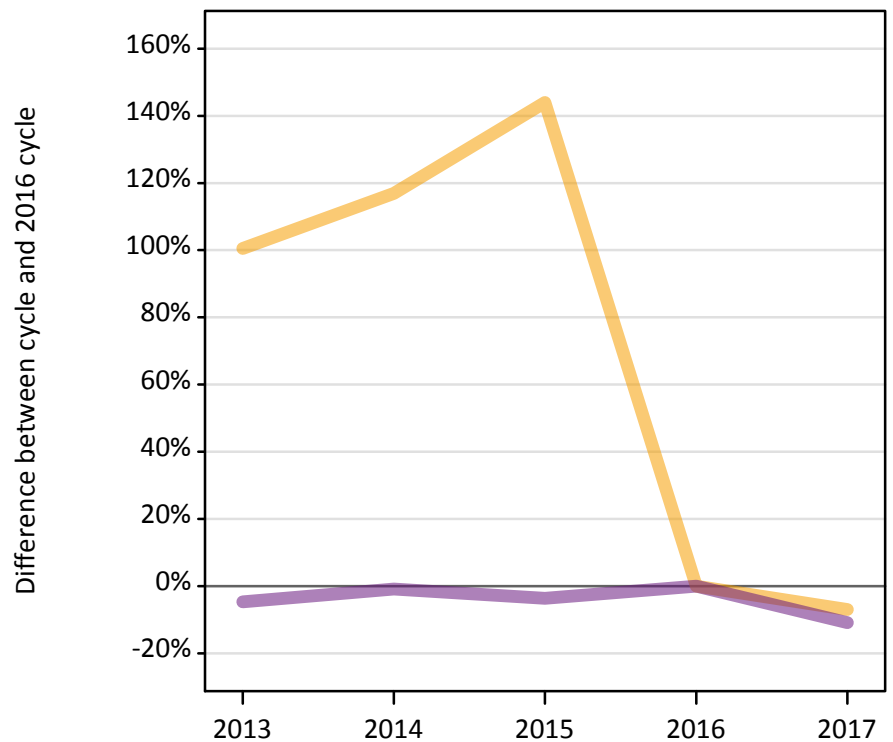
Applicant type	Status	2013	2014	2015	2016	2017
Main scheme	Placed (Adjustment)	36%	30%	27%	0%	16%

Note: Percentage changes are not plotted for lines with, on average, fewer than 30 applicants per year. As a result, lines for some, or all, of the states may be missing.

A.12 Main scheme applicants not currently placed from all domiciles: 28 days after A level results day

Applicants in unplaced states: difference between cycle and 2016 cycle

— Holding offer
— Free to be placed in Clearing



A.13 Main scheme applicants not currently placed from all domiciles: 28 days after A level results day

Applicants in unplaced states: applicants at 28 days after A level results day

Applicant type	Status	2013	2014	2015	2016	2017
Main scheme	Holding offer	16,730	18,100	20,360	8,350	7,760
	Free to be placed in Clearing	145,010	150,910	146,630	152,200	135,640

A.14 Main scheme applicants not currently placed from all domiciles: 28 days after A level results day

Applicants in unplaced states: difference between cycle and 2016 cycle

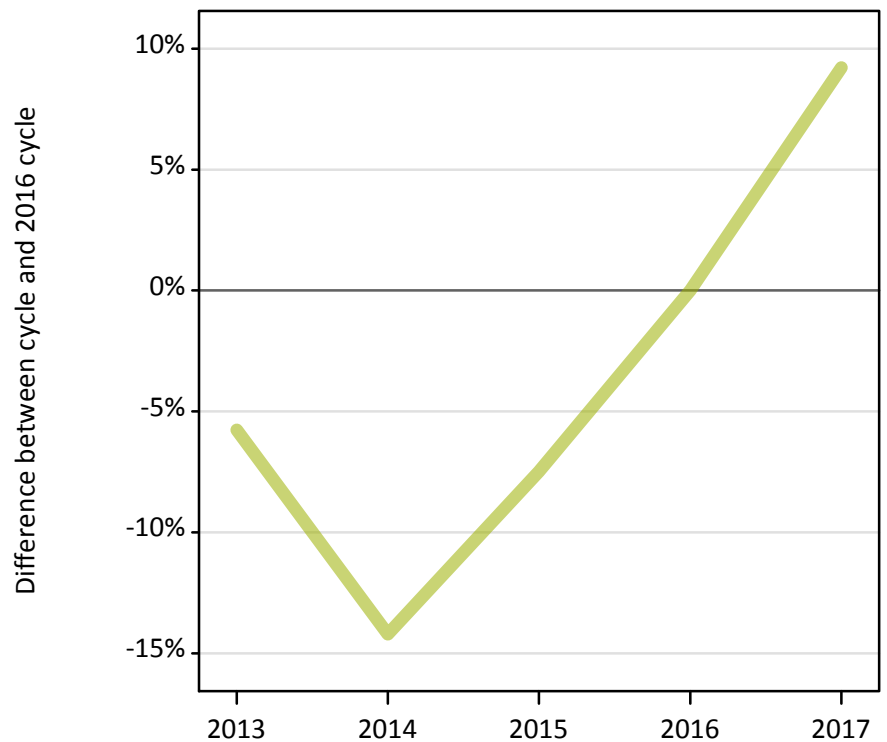
Applicant type	Status	2013	2014	2015	2016	2017
Main scheme	Holding offer	101%	117%	144%	0%	-7%
	Free to be placed in Clearing	-5%	-1%	-4%	0%	-11%

Note: Percentage changes are not plotted for lines with, on average, fewer than 30 applicants per year. As a result, lines for some, or all, of the states may be missing.

A.15 Direct to Clearing applicants from all domiciles: 28 days after A level results day

Placed (Direct to Clearing): difference between cycle and 2016 cycle

Placed (Direct to Clearing)



A.16 Direct to Clearing applicants from all domiciles: 28 days after A level results day

Direct to Clearing 28 days after A level results day

Applicant type	Status	2013	2014	2015	2016	2017
Direct to Clearing	Placed (Direct to Clearing)	11,770	10,720	11,560	12,490	13,640
	Other (Direct to Clearing)	7,820	7,260	8,080	7,390	7,980

A.17 Direct to Clearing applicants from all domiciles: 28 days after A level results day

Placed (Direct to Clearing): difference between cycle and 2016 cycle

Applicant type	Status	2013	2014	2015	2016	2017
Direct to Clearing	Placed (Direct to Clearing)	-6%	-14%	-7%	0%	9%

Note: Percentage changes are not plotted for lines with, on average, fewer than 30 applicants per year. As a result, lines for some, or all, of the states may be missing.